



# AYLIK RAPOR

## Automotive Industry Monthly Report

Nisan / April 2014

- **Üretim**/Production
- **Satış**/Sales
- **İthalat**/Imports
- **İhracat**/Exports

OSD "OICA" Üyesidir



OSD is a Member of "OICA"

## 2014 Nisan Ayı Özeti / 2014 April Summary

KONULAR/ MATTERS		NİSAN / APRIL			4 AY/ 4 MONTHS			SON 12 AYLIK / YoY		
		2013	2014	2014/ 2013 (%)	2013	2014	2014/ 2013 (%)	2013	2014	2014/ 2013 (%)
Üretim/ Production	Toplam/ Total	93.308	98.991	6	370.454	354.482	-4	1.073.932	1.109.562	3
	Otomobil/ P.Cars	51.211	62.594	22	193.637	228.999	18	567.654	668.966	18
Pazar/ Market	Toplam/ Total	77.015	56.741	-26	237.774	179.379	-25	845.377	834.729	-1
	Otomobil/ P.Cars	56.999	42.769	-25	171.433	132.116	-23	584.532	625.338	7
İthalat/ Import	Toplam/ Total	54.011	37.802	-30	163.054	120.825	-26	547.370	573.380	5
	Otomobil/ P.Cars	45.043	31.303	-31	134.631	99.308	-26	445.381	482.204	8
İhracat/ Export	Toplam/ Total	69.996	82.887	18	275.369	285.922	4	743.304	839.024	13
	Otomobil/ P.Cars	40.090	55.738	39	150.834	192.146	27	415.555	525.816	27
İhracat / Export (\$)	Toplam/ Total **	1.781.220.362	2.123.926.271	19	6.941.958.673	7.777.757.232	12	19.559.008.349	22.535.729.885	15
	Otomobil/ P.Cars	596.719.806	731.486.008	23	2.261.002.593	2.538.954.656	12	6.150.881.007	7.133.822.770	16

PARAMETRELER / PARAMETERS		NİSAN / APRIL			4 AY/ 4 MONTHS			SON 12 AYLIK / YoY		
		2013	2014	2014/ 2013 (%)	2013	2014	2014/ 2013 (%)	2013	2014	2014/ 2013 (%)
ÜFE/ PPI		-0,51	0,09	**	-0,01	5,61	**	1,70	12,98	**
TÜFE/ CPI		0,42	1,34	**	3,06	4,96	**	6,13	9,38	**
Sanayi Endeksi/ Industry Index		-0,12	0,18	**	1,74	6,49	**	1,77	13,51	**
\$ (*)		1,8774	2,1193	13	1,8129	2,1910	21	1,8067	2,0587	14
EURO (*)		2,3563	2,9305	24	2,3575	3,0074	28	2,3171	2,7825	20
Japon Yeni (*)		1,8551	2,0720	12	1,9197	2,1392	11	2,1409	2,0356	-5

(\*) Ortalama Değerler / Average Values

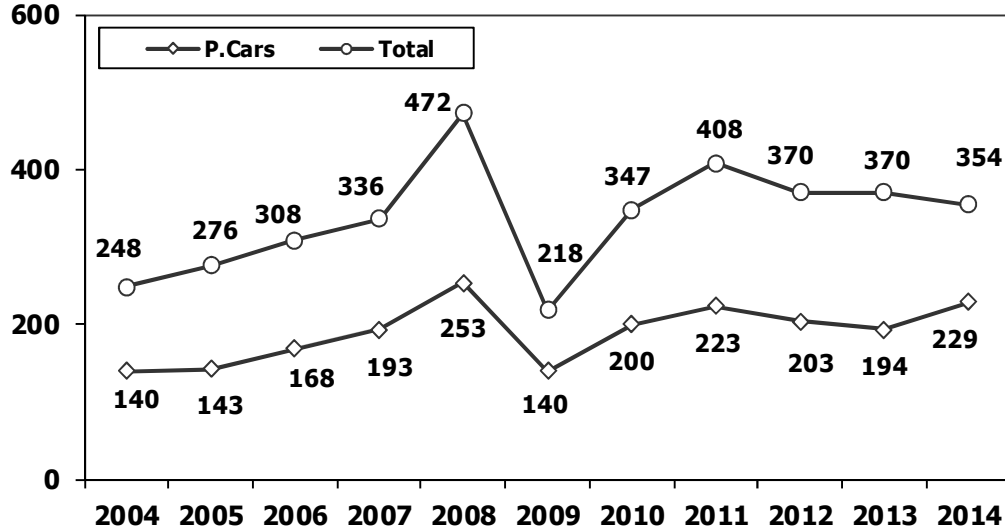
(\*\*) Toplam Sanayi / Total Industry Including Components

## 2013/2014 Yılları Üretim 2013/2014 Production

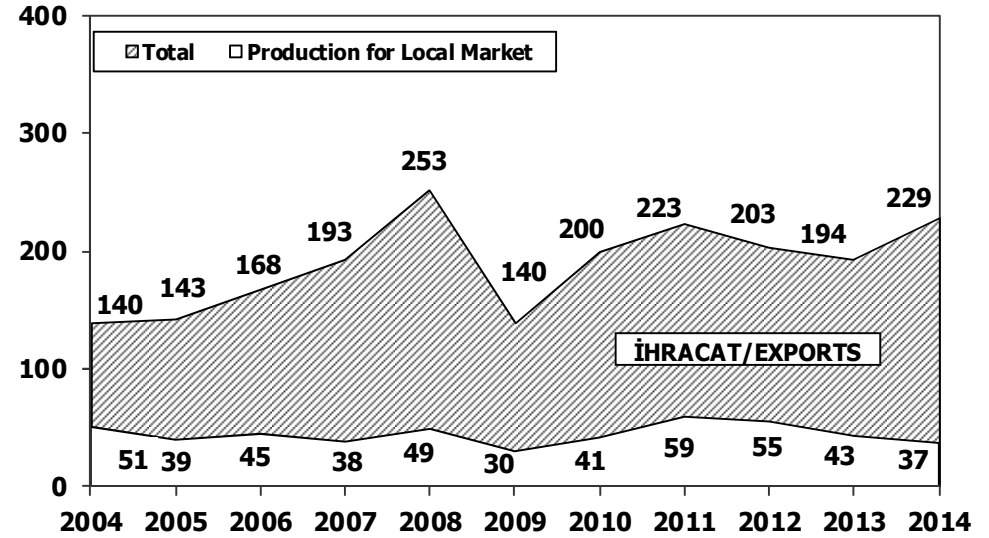
K.KAMYON : AYA 3.5-12 Ton (L.Truck:GWW 3.5-12 Ton)  
B.KAMYON : AYA 12 Ton'dan Büyük (M.Truck:GWW 12 Ton And Up)

TİPLER	NİSANAYI ÜRETİMİ April Production		4 AYLIK ÜRETİM 4 Months Production		DEĞİŞİM % Percent Change %	
	2013	2014	2013	2014	NİSAN April	4 AY 4 Months
<b>OTOMOBİL - Pass.Car</b>	<b>51.211</b>	<b>62.594</b>	<b>193.637</b>	<b>228.999</b>	<b>22</b>	<b>18</b>
<b>TİCARİ ARAÇLAR - Commercial Vehicles</b>	<b>42.097</b>	<b>36.397</b>	<b>176.817</b>	<b>125.483</b>	<b>-14</b>	<b>-29</b>
* B. KAMYON - M. Truck	2.168	2.188	8.162	7.848	1	-4
* K. KAMYON - L. Truck	304	258	1.350	1.114	-15	-17
* KAMYONET - Pick Up	35.671	29.851	150.033	102.974	-16	-31
* OTOBÜS - Bus	688	542	3.024	2.269	-21	-25
* MİNİBÜS - Minibus	2.851	3.015	12.544	9.068	6	-28
* MİDİBÜS - Midibus	415	543	1.704	2.210	31	30
<b>TAŞIT ARAÇLARI TOPLAM - MV Total</b>	<b>93.308</b>	<b>98.991</b>	<b>370.454</b>	<b>354.482</b>	<b>6</b>	<b>-4</b>
<b>TRAKTÖR - F.Tractor</b>	<b>3.526</b>	<b>4.548</b>	<b>12.882</b>	<b>16.100</b>	<b>29</b>	<b>25</b>
<b>GENEL TOPLAM - Grand Total</b>	<b>96.834</b>	<b>103.539</b>	<b>383.336</b>	<b>370.582</b>	<b>7</b>	<b>-3</b>

**Toplam Üretim ve Otomobil Üretimi** (x1000) (Ocak-Nisan)  
Total & P.Cars Production (x1000) (January- April)



**Otomobil Üretimi ve İhracat** (x1000) (Ocak-Nisan)  
P.Cars Production & Exports (x1000) (January- April)



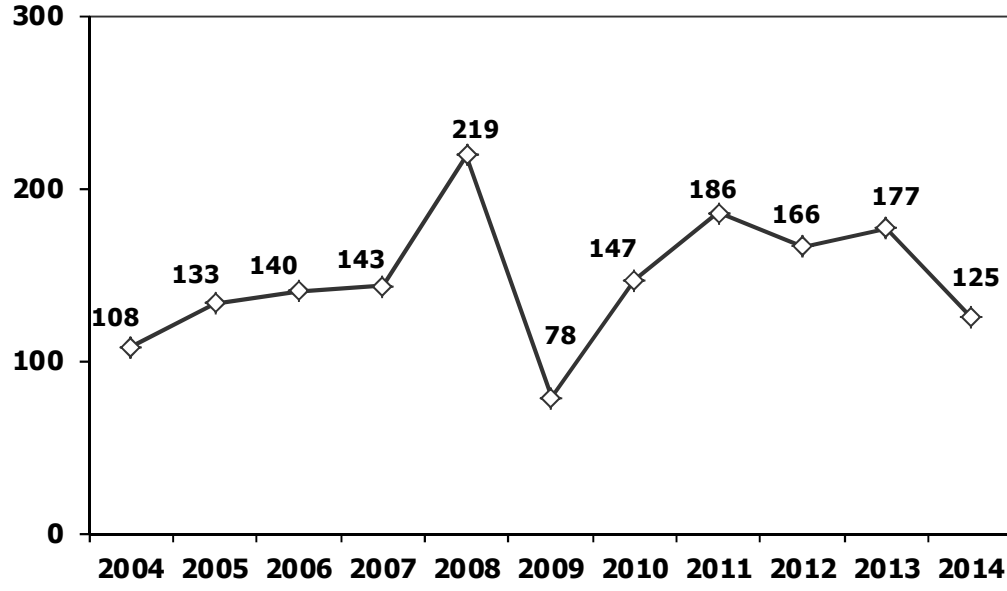
## 4 Aylık Üretim (4 Months Production)

FİRMALAR	OTOMOBİL	%	K.KAMYON	%	B.KAMYON	%	KAMYONET	%	OTOBÜS	%	MİNİBÜS	%	MİDİBÜS	%	TRAKTÖR	%	TOPLAM
A.I.O.S.	0	0	1.015	91	0	0	430	0	35	2	0	0	685	31	0	0	<b>2.165</b>
FORD OTOSAN	0	0	0	0	1.977	25	51.232	50	0	0	8.765	97	0	0	0	0	<b>61.974</b>
HATTAT TARIM	0	0	0	0	0	0	0	0	0	0	0	0	0	0	922	6	<b>922</b>
HONDA TÜRKİYE	4.698	2	0	0	0	0	0	0	0	0	0	0	0	0	0	0	<b>4.698</b>
HYUNDAI ASSAN	59.789	26	0	0	0	0	0	0	0	0	0	0	0	0	0	0	<b>59.789</b>
KARSAN	0	0	0	0	0	0	0	0	40	2	302	3	0	0	0	0	<b>342</b>
M. BENZ TÜRK	0	0	0	0	5.871	75	0	0	1.101	49	0	0	0	0	0	0	<b>6.972</b>
MAN TÜRKİYE	0	0	0	0	0	0	0	0	394	17	0	0	0	0	0	0	<b>394</b>
OTOKAR	0	0	99	9	0	0	81	0	114	5	1	0	921	42	0	0	<b>1.216</b>
OYAK RENAULT	100.897	44	0	0	0	0	0	0	0	0	0	0	0	0	0	0	<b>100.897</b>
TEMSA GLOBAL	0	0	0	0	0	0	0	0	585	26	0	0	604	27	0	0	<b>1.189</b>
TOFAŞ	17.631	8	0	0	0	0	51.231	50	0	0	0	0	0	0	0	0	<b>68.862</b>
TOYOTA	45.984	20	0	0	0	0	0	0	0	0	0	0	0	0	0	0	<b>45.984</b>
TÜRK TRAKTÖR	0	0	0	0	0	0	0	0	0	0	0	0	0	0	15.178	94	<b>15.178</b>
<b>TOPLAM</b>	<b>228.999</b>	<b>100</b>	<b>1.114</b>	<b>100</b>	<b>7.848</b>	<b>100</b>	<b>102.974</b>	<b>100</b>	<b>2.269</b>	<b>100</b>	<b>9.068</b>	<b>100</b>	<b>2.210</b>	<b>100</b>	<b>16.100</b>	<b>100</b>	<b>370.582</b>

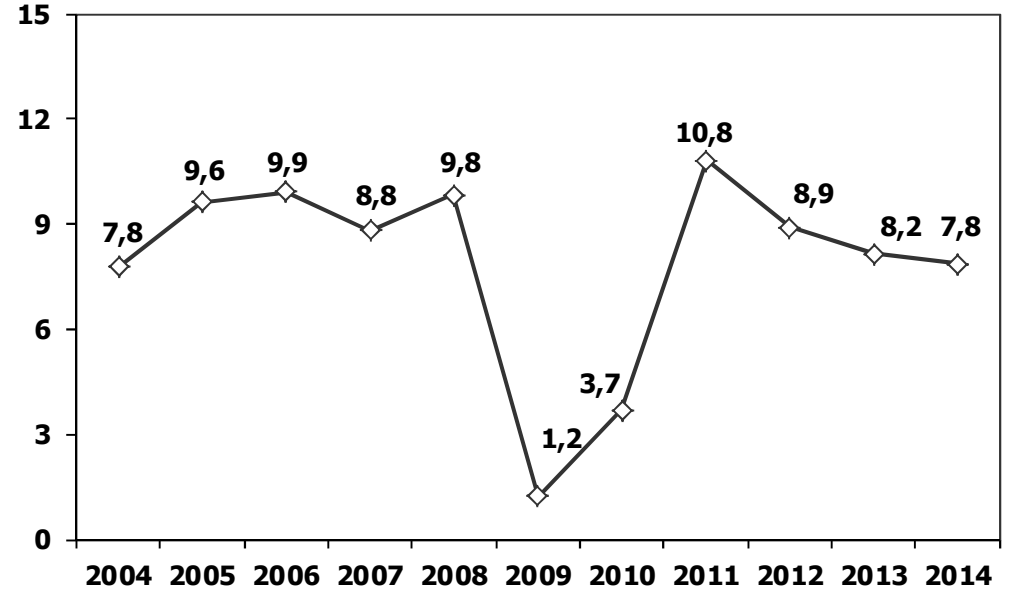
## Nisan Ayı Üretimi (April Production)

FİRMALAR	OTOMOBİL	%	K.KAMYON	%	B.KAMYON	%	KAMYONET	%	OTOBÜS	%	MİNİBÜS	%	MİDİBÜS	%	TRAKTÖR	%	TOPLAM
A.I.O.S.	0	0	233	90	0	0	210	1	2	0	0	0	187	34	0	0	<b>632</b>
FORD OTOSAN	0	0	0	0	628	29	17.384	58	0	0	2.949	98	0	0	0	0	<b>20.961</b>
HATTAT TARIM	0	0	0	0	0	0	0	0	0	0	0	0	0	0	285	6	<b>285</b>
HONDA TÜRKİYE	1.132	2	0	0	0	0	0	0	0	0	0	0	0	0	0	0	<b>1.132</b>
HYUNDAI ASSAN	18.646	30	0	0	0	0	0	0	0	0	0	0	0	0	0	0	<b>18.646</b>
KARSAN	0	0	0	0	0	0	0	0	0	0	65	2	0	0	0	0	<b>65</b>
M. BENZ TÜRK	0	0	0	0	1.560	71	0	0	274	51	0	0	0	0	0	0	<b>1.834</b>
MAN TÜRKİYE	0	0	0	0	0	0	0	0	101	19	0	0	0	0	0	0	<b>101</b>
OTOKAR	0	0	25	10	0	0	11	0	20	4	1	0	217	40	0	0	<b>274</b>
OYAK RENAULT	26.510	42	0	0	0	0	0	0	0	0	0	0	0	0	0	0	<b>26.510</b>
TEMSA GLOBAL	0	0	0	0	0	0	0	0	145	27	0	0	139	26	0	0	<b>284</b>
TOFAŞ	4.820	8	0	0	0	0	12.246	41	0	0	0	0	0	0	0	0	<b>17.066</b>
TOYOTA	11.486	18	0	0	0	0	0	0	0	0	0	0	0	0	0	0	<b>11.486</b>
TÜRK TRAKTÖR	0	0	0	0	0	0	0	0	0	0	0	0	0	0	4.263	94	<b>4.263</b>
<b>TOPLAM</b>	<b>62.594</b>	<b>100</b>	<b>258</b>	<b>100</b>	<b>2.188</b>	<b>100</b>	<b>29.851</b>	<b>100</b>	<b>542</b>	<b>100</b>	<b>3.015</b>	<b>100</b>	<b>543</b>	<b>100</b>	<b>4.548</b>	<b>100</b>	<b>103.539</b>

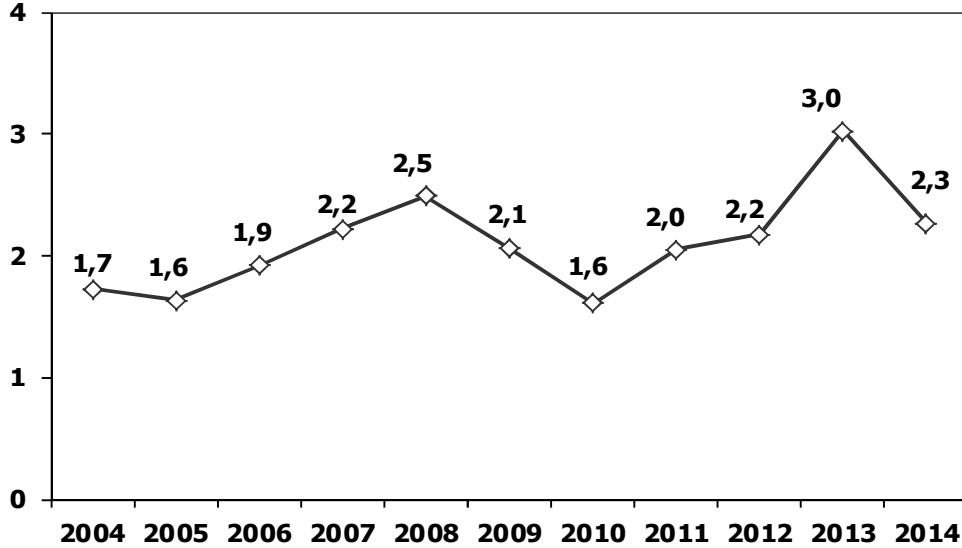
**Ticari Araç Üretimi** (x1000) (Ocak-Nisan)  
Commercial Vehicle Production (x1000) (January- April)



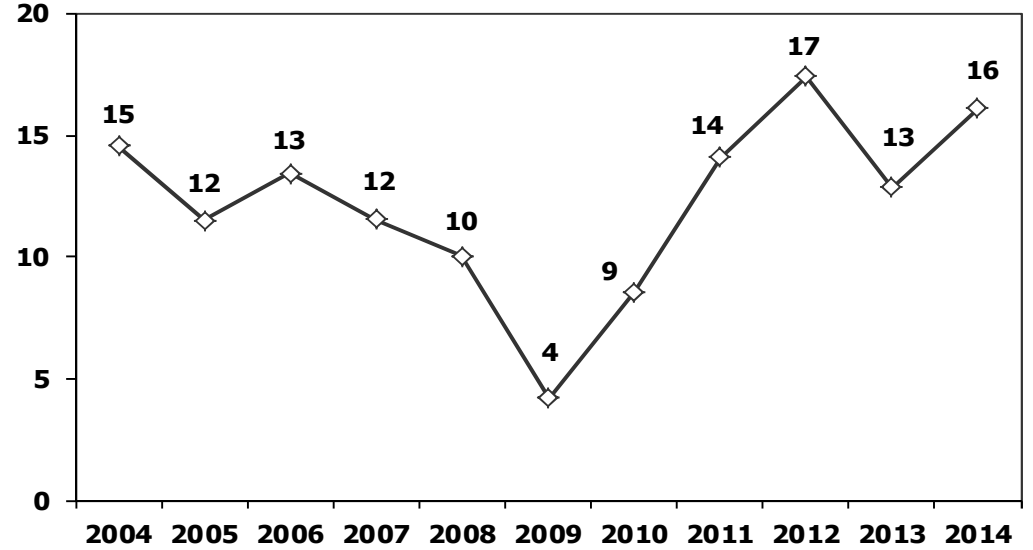
(AYA >12 Ton) **Büyük Kamyon Üretimi** (x1000) (Ocak-Nisan)  
(GVW >12 Ton) Heavy Truck Production (x1000) (January- April)



**Otobüs Üretimi** (x1000) (Ocak-Nisan)  
Bus Production (x1000) (January- April)

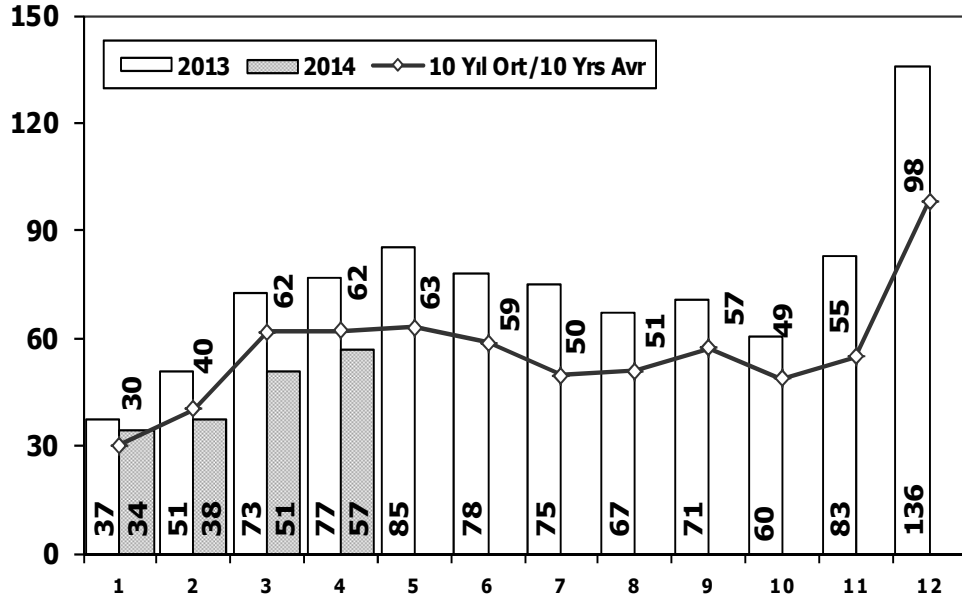


**Traktör Üretimi** (x1000) (Ocak-Nisan)  
F. Tractor Production (x1000) (January- April)



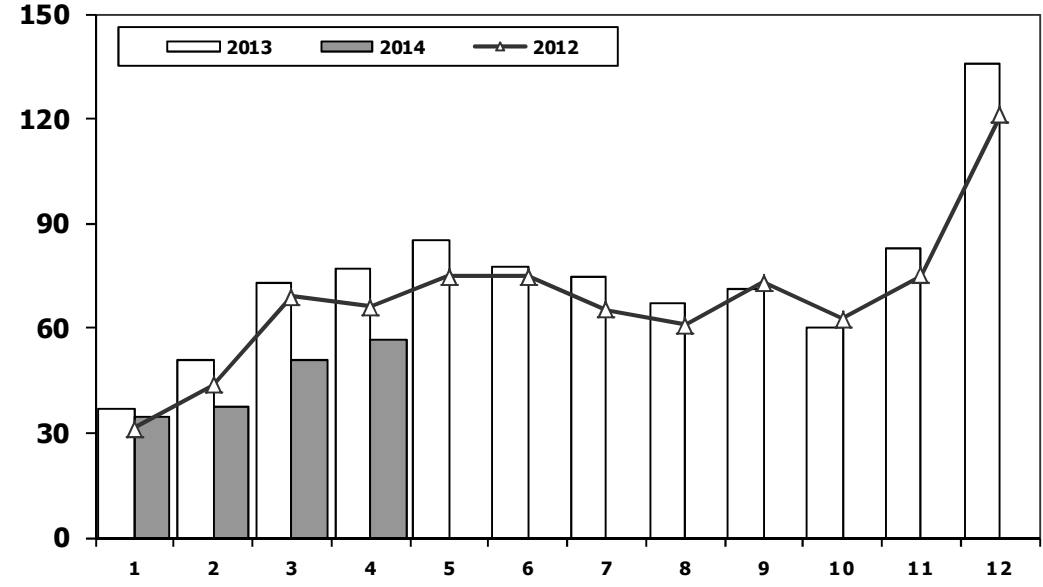
## Toplam Pazarın Analizi (x1000)

### Total Market Analysis (x1000)



## Toplam Pazar (x1000)

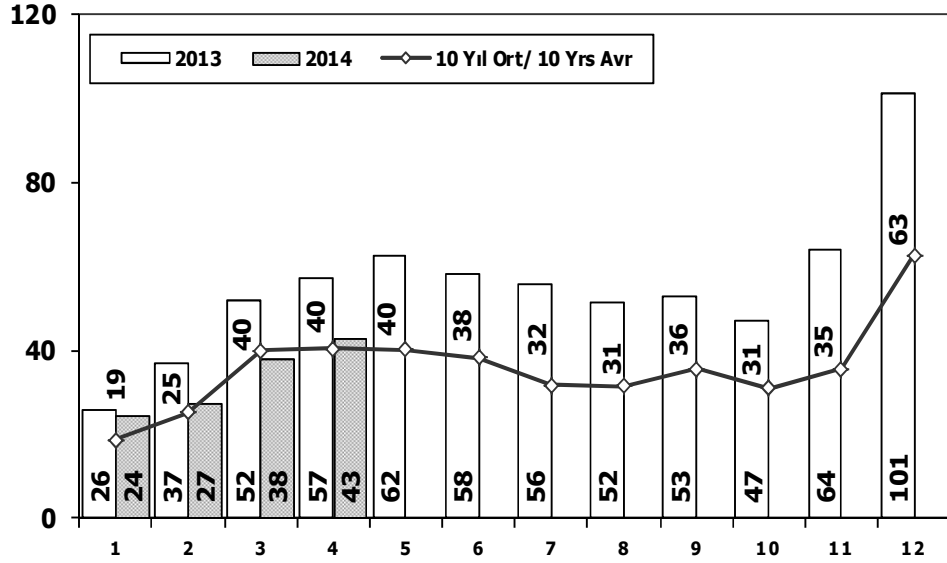
### Total Market (x1000)



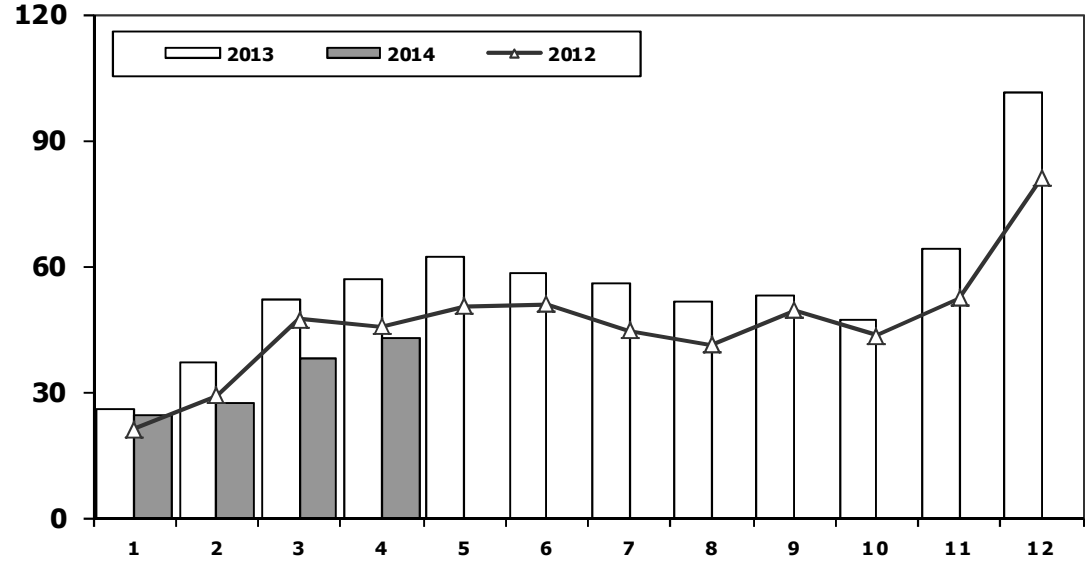
Aylar / Months	10 Yil Ort. 10 Yrs Avr. (x1000)	2014 (x1000)	%
1	30,3	34,3	13,2
2	40,3	37,5	-6,8
3	61,8	50,8	-17,8
4	62,0	56,7	-8,4
<b>Total</b>	<b>194,4</b>	<b>179,4</b>	<b>-7,7</b>

	1	2	3	4	5	6	7	8	9	10	11	12	4 Ay/Mo	Total
<b>2004</b>	38.621	39.389	71.723	77.056	84.634	63.228	57.307	56.422	59.429	56.153	52.237	85.070	226.789	741.269
<b>2005</b>	22.687	38.291	64.502	60.873	71.383	64.379	63.847	68.647	66.580	60.791	65.719	110.838	186.353	758.537
<b>2006</b>	29.969	44.646	65.090	68.853	83.289	58.203	40.037	47.374	49.629	39.805	55.898	82.722	208.558	665.515
<b>2007</b>	24.950	31.702	45.488	45.633	51.255	51.661	50.117	54.171	50.078	56.058	67.017	106.076	147.773	634.206
<b>2008</b>	33.792	38.121	56.814	50.967	51.627	49.393	44.692	46.592	46.829	35.147	28.152	44.418	179.694	526.544
<b>2009</b>	20.631	22.846	56.531	54.426	64.887	63.102	30.246	37.092	83.403	22.117	29.202	91.386	154.434	575.869
<b>2010</b>	21.050	32.313	53.828	57.079	61.628	63.390	63.718	64.645	66.601	76.780	77.406	154.734	164.270	793.172
<b>2011</b>	47.658	62.348	83.333	<b>82.071</b>	85.093	85.863	65.364	61.378	63.643	72.640	67.195	134.281	<b>275.410</b>	<b>910.867</b>
<b>2012</b>	31.219	43.827	68.957	66.014	74.820	74.781	65.122	60.848	73.197	62.677	75.045	121.113	210.017	817.620
<b>2013</b>	37.140	50.931	72.688	77.015	85.421	77.771	74.726	67.383	71.037	60.399	83.017	135.596	237.774	893.124
<b>2014</b>	34.338	37.519	50.781	56.741	0	0	0	0	0	0	0	0	179.379	179.379

## Otomobil Pazarının Analizi (x1000) P.Cars Market Analysis (x1000)



## Otomobil Pazarı (x1000) P.Cars Market (x1000)

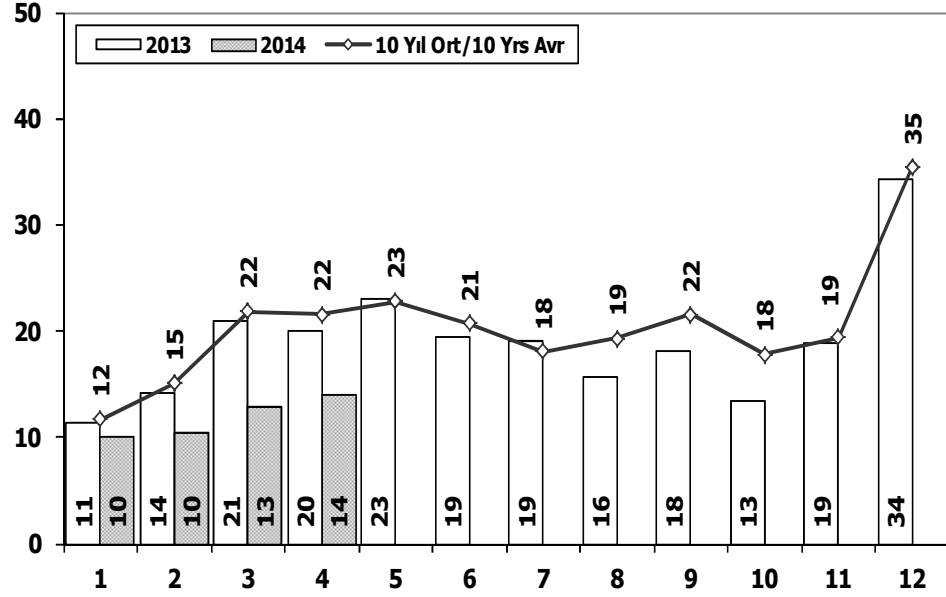


Aylar / Months	10 Yil Ort. 10 Yrs Avr. (x1000)	2014 (x1000)	%
1	18,7	24,4	30,5
2	25,2	27,2	7,9
3	39,9	37,8	-5,3
4	40,4	42,8	5,9
<b>Total</b>	<b>124,1</b>	<b>132,1</b>	<b>6,4</b>

	1	2	3	4	5	6	7	8	9	10	11	12	4 Ay/Mo	Total
2004	25.625	23.695	46.075	47.995	54.610	37.671	33.410	33.709	33.383	34.292	30.547	50.197	143.390	451.209
2005	11.595	21.012	38.129	36.206	38.480	40.900	38.969	38.648	36.410	34.960	37.841	65.447	106.942	438.597
2006	16.506	24.929	36.996	40.177	48.521	32.982	22.653	24.873	27.517	21.237	30.477	46.351	118.608	373.219
2007	13.186	17.212	24.336	25.204	29.067	30.126	28.246	28.469	27.662	32.569	39.643	61.745	79.938	357.465
2008	18.588	21.196	34.147	30.313	31.477	28.724	25.530	26.102	27.053	19.788	17.201	25.879	104.244	305.998
2009	13.173	14.492	40.622	36.202	44.188	41.019	16.637	22.537	52.162	13.828	17.781	57.178	104.489	369.819
2010	12.594	20.651	33.958	36.549	40.467	42.086	41.399	42.222	42.477	47.859	50.061	99.461	103.752	509.784
2011	29.868	39.004	54.023	53.835	56.302	56.714	43.518	38.875	39.964	47.508	44.951	88.957	176.730	593.519
2012	21.077	29.189	47.270	45.645	50.460	50.849	44.531	41.236	49.360	43.440	52.297	80.926	143.181	556.280
2013	25.835	36.814	51.785	56.999	62.383	58.290	55.712	51.611	52.925	46.985	64.117	101.199	171.433	664.655
2014	24.368	27.167	37.812	42.769	0	0	0	0	0	0	0	0	132.116	132.116

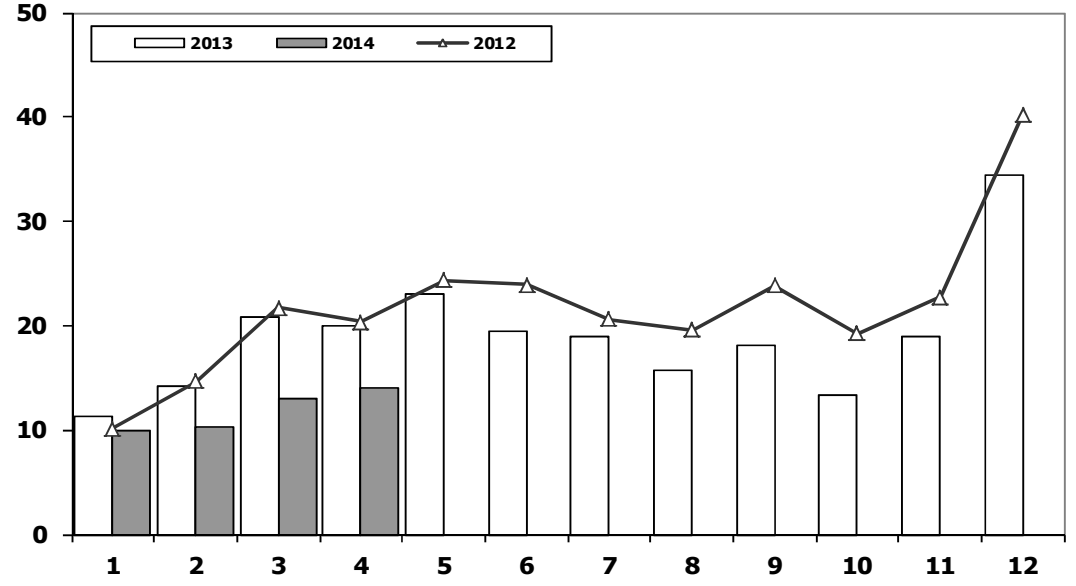
## Ticari Araç Pazarının Analizi (x1000)

### CV Market Analysis (x1000)



## Ticari Araç Pazarı (x1000)

### CV Total Market (Local + Imports) (x1000)

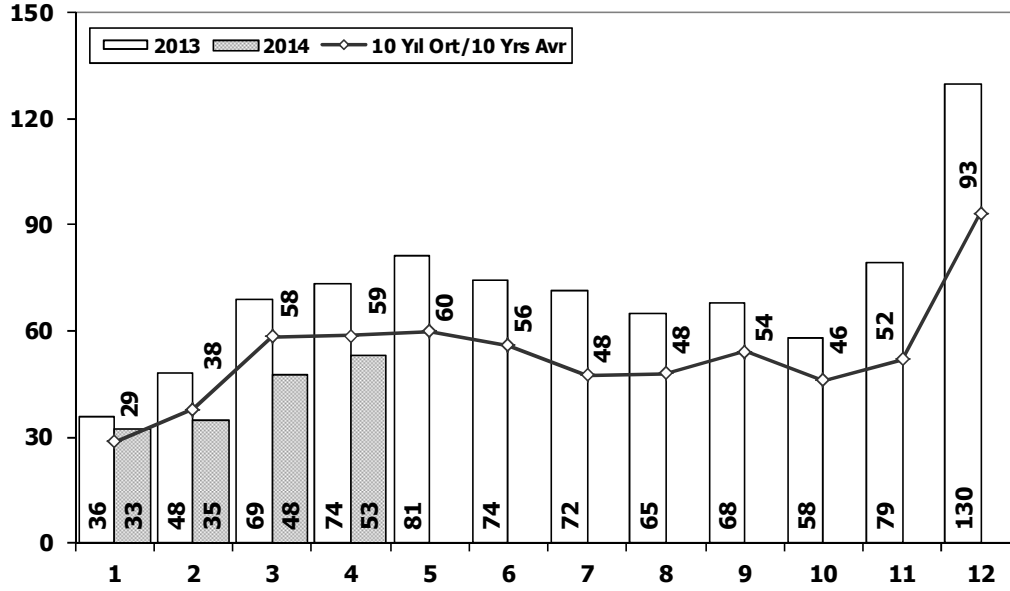


Aylar / Months	10 Yıl Ort. 10 Yrs Avr. (x1000)	2014 (x1000)	%
1	11,7	10,0	-14,5
2	15,1	10,4	-31,4
3	21,9	13,0	-40,8
4	21,6	14,0	-35,2
<b>Total</b>	<b>70,2</b>	<b>47,3</b>	<b>-32,7</b>

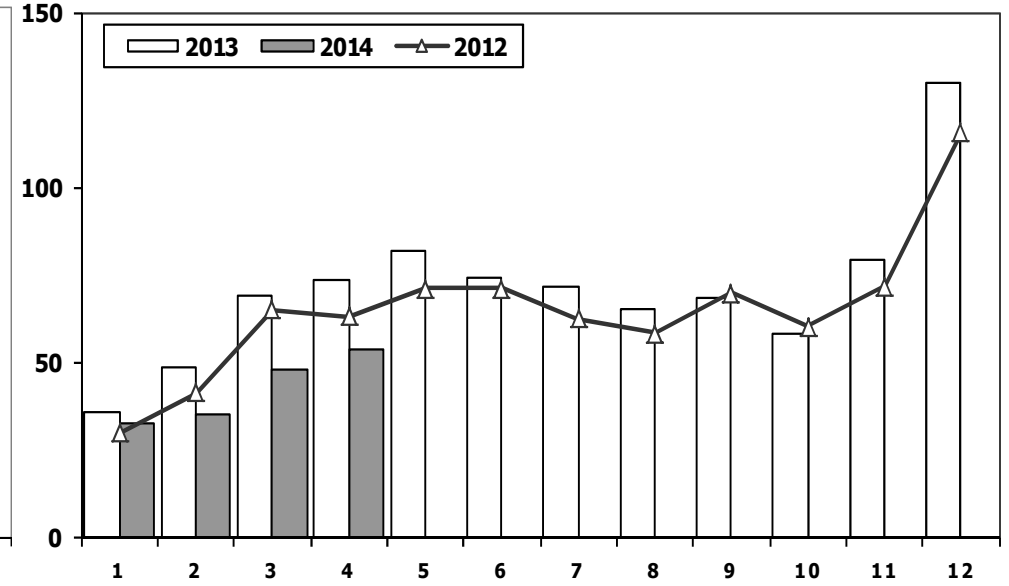
	1	2	3	4	5	6	7	8	9	10	11	12	4 Ay/Mo	Total
2004	12.996	15.694	25.648	<b>29.061</b>	30.024	25.557	23.897	22.713	26.046	21.861	21.690	34.873	83.399	290.060
2005	11.092	17.279	26.373	24.667	32.903	23.479	24.878	29.999	30.170	25.831	27.878	45.391	79.411	<b>319.940</b>
2006	13.463	19.717	28.094	28.676	34.768	25.221	17.384	22.501	22.112	18.568	25.421	36.371	89.950	292.296
2007	11.764	14.490	21.152	20.429	22.188	21.535	21.871	25.702	22.416	23.489	27.374	44.331	67.835	276.741
2008	15.204	16.925	22.667	20.654	20.150	20.669	19.162	20.490	19.776	15.359	10.951	18.539	75.450	220.546
2009	7.458	8.354	15.909	18.224	20.699	22.083	13.609	14.555	31.241	8.289	11.421	34.208	49.945	206.050
2010	8.456	11.662	19.870	20.530	21.161	21.304	22.319	22.423	24.124	28.921	27.345	55.273	60.518	283.388
2011	17.790	23.344	29.310	28.236	28.791	29.149	21.846	22.503	23.679	25.132	22.244	45.324	<b>98.680</b>	317.348
2012	10.142	14.638	21.687	20.369	24.360	23.932	20.591	19.612	23.837	19.237	22.748	40.187	66.836	261.340
2013	11.305	14.117	20.903	20.016	23.038	19.481	19.014	15.772	18.112	13.414	18.900	34.397	66.341	228.469
2014	9.970	10.352	12.969	13.972	0	0	0	0	0	0	0	0	47.263	47.263



**Hafif Araç Pazarının Analizi (x1000)**  
LV Market Analysis (x1000)



**Hafif Araç Pazarı (x1000)**  
LV Total Market (Local + Imports) (x1000)

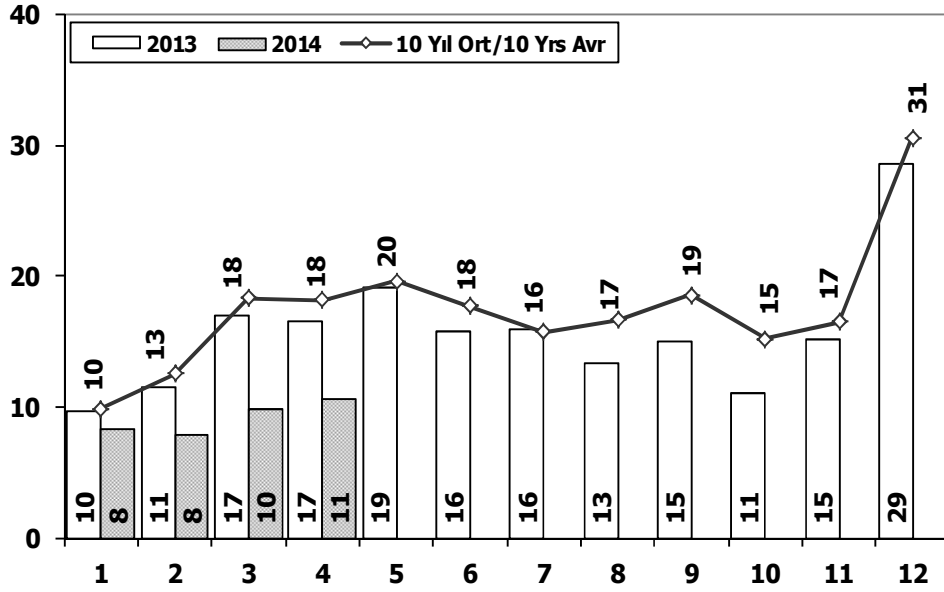


Aylar / Months	10 Yil Ort. 10 Yrs Avr. (x1000)	2014 (x1000)	%
1	28,6	32,7	14,4
2	37,7	35,0	-7,2
3	58,3	47,6	-18,4
4	58,6	53,3	-9,0
<b>Total</b>	<b>183,2</b>	<b>168,6</b>	<b>-8,0</b>

	1	2	3	4	5	6	7	8	9	10	11	12	4 Ay/Mo	Total
2004	36.352	37.079	67.144	73.075	80.290	59.730	54.816	52.876	55.609	53.000	49.200	78.924	213.650	698.095
2005	20.747	35.766	60.707	56.844	67.357	60.796	61.015	64.011	61.954	56.638	61.364	103.209	174.064	710.408
2006	27.917	40.938	60.052	64.038	78.229	54.355	37.251	43.767	46.109	36.542	51.867	76.787	192.945	617.852
2007	23.117	29.184	41.890	42.366	47.938	48.674	47.490	50.558	46.581	52.725	63.313	100.926	136.557	594.762
2008	31.527	35.251	53.649	47.701	48.598	46.324	42.156	43.670	43.932	32.884	26.253	42.078	168.128	494.023
2009	19.606	21.742	55.111	52.640	63.191	61.067	28.845	35.609	81.397	21.033	27.962	88.923	149.099	557.126
2010	20.095	31.172	51.769	54.946	59.377	60.896	61.345	61.764	63.814	73.404	73.962	148.369	157.982	760.913
2011	44.892	58.663	78.403	<b>77.695</b>	80.646	81.573	63.044	58.406	60.129	69.421	63.657	127.910	<b>259.653</b>	<b>864.439</b>
2012	29.545	41.324	64.884	62.949	70.863	71.067	62.304	58.148	69.629	59.938	71.710	115.400	198.702	777.761
2013	35.523	48.307	68.774	73.575	81.468	74.096	71.596	65.043	67.963	58.014	79.301	129.718	226.179	853.378
2014	32.670	35.021	47.581	53.305	0	0	0	0	0	0	0	0	168.577	168.577

## Hafif Ticari Arac Pazarının Analizi (x1000)

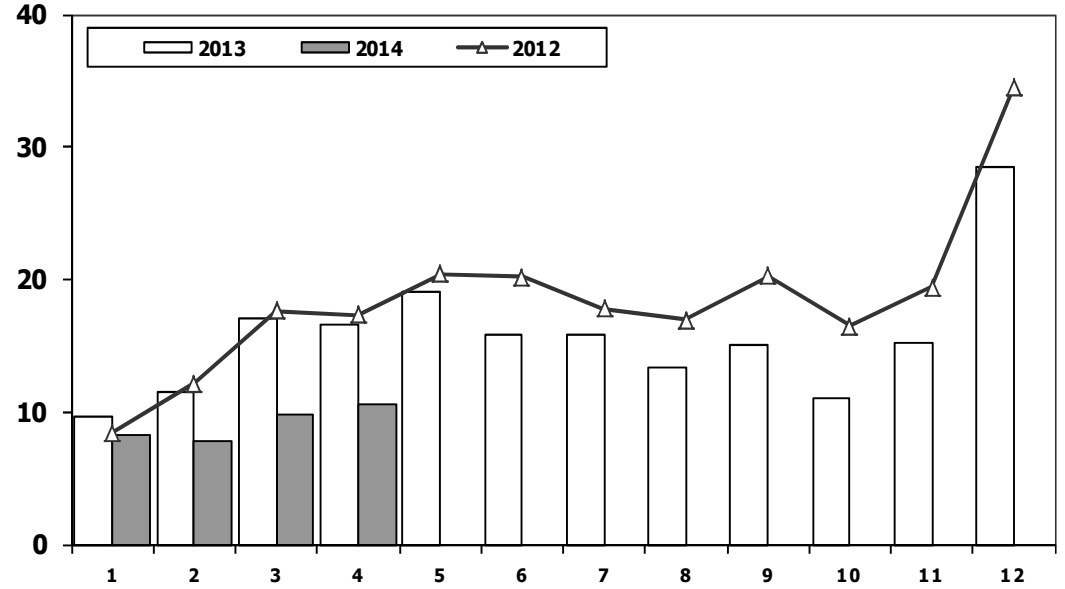
### LCV Market Analysis (x1000)



Aylar / Months	10 Yil Ort. 10 Yrs Avr. (x1000)	2013 (x1000)	%
1	9,9	8,3	-16,0
2	12,6	7,9	-37,5
3	18,4	9,8	-46,8
4	18,2	10,5	-42,2
<b>Total</b>	<b>59,0</b>	<b>36,5</b>	<b>-38,2</b>

## Hafif Ticari Arac Pazarı (x1000)

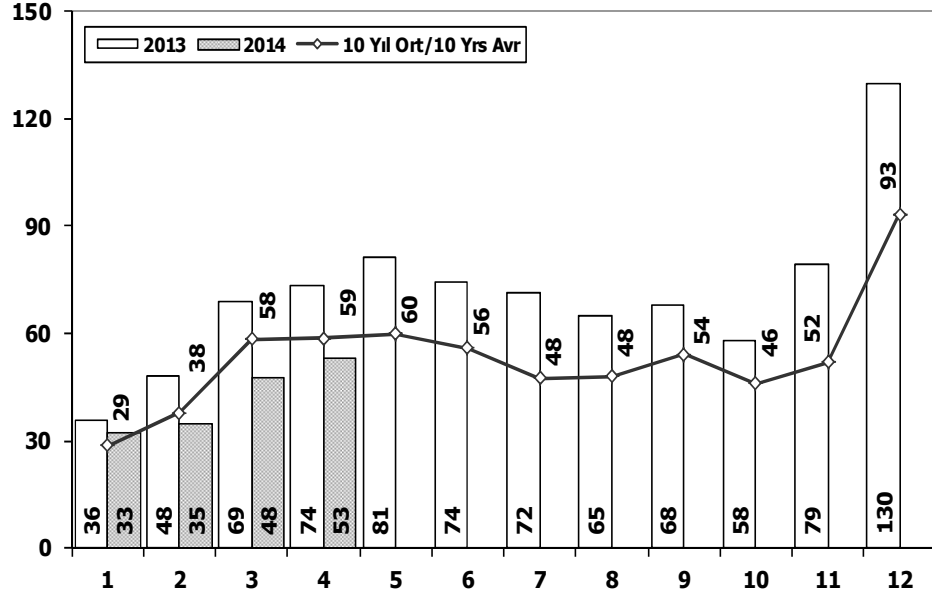
### LCV Total Market (Local + Imports) (x1000)



	1	2	3	4	5	6	7	8	9	10	11	12	4 Ay/Mo	Total
2004	10.727	13.384	21.069	<b>25.080</b>	25.680	22.059	21.406	19.167	22.226	18.708	18.653	28.727	70.260	246.886
2005	9.152	14.754	22.578	20.638	28.877	19.896	22.046	25.363	25.544	21.678	23.523	37.762	67.122	<b>271.811</b>
2006	11.411	16.009	23.056	23.861	29.708	21.373	14.598	18.894	18.592	15.305	21.390	30.436	74.337	244.633
2007	9.931	11.972	17.554	17.162	18.871	18.548	19.244	22.089	18.919	20.156	23.670	39.181	56.619	237.297
2008	12.939	14.055	19.502	17.388	17.121	17.600	16.626	17.568	16.879	13.096	9.052	16.199	63.884	188.025
2009	6.433	7.250	14.489	16.438	19.003	20.048	12.208	13.072	29.235	7.205	10.181	31.745	44.610	187.307
2010	7.501	10.521	17.811	18.397	18.910	18.810	19.946	19.542	21.337	25.545	23.901	48.908	54.230	251.129
2011	15.024	19.659	24.380	23.860	24.344	24.859	19.526	19.531	20.165	21.913	18.706	38.953	<b>82.923</b>	270.920
2012	8.468	12.135	17.614	17.304	20.403	20.218	17.773	16.912	20.269	16.498	19.413	34.474	55.521	221.481
2013	9.688	11.493	16.989	16.576	19.085	15.806	15.884	13.432	15.038	11.029	15.184	28.519	54.746	188.723
2014	8.302	7.854	9.769	10.536	0	0	0	0	0	0	0	0	36.461	36.461

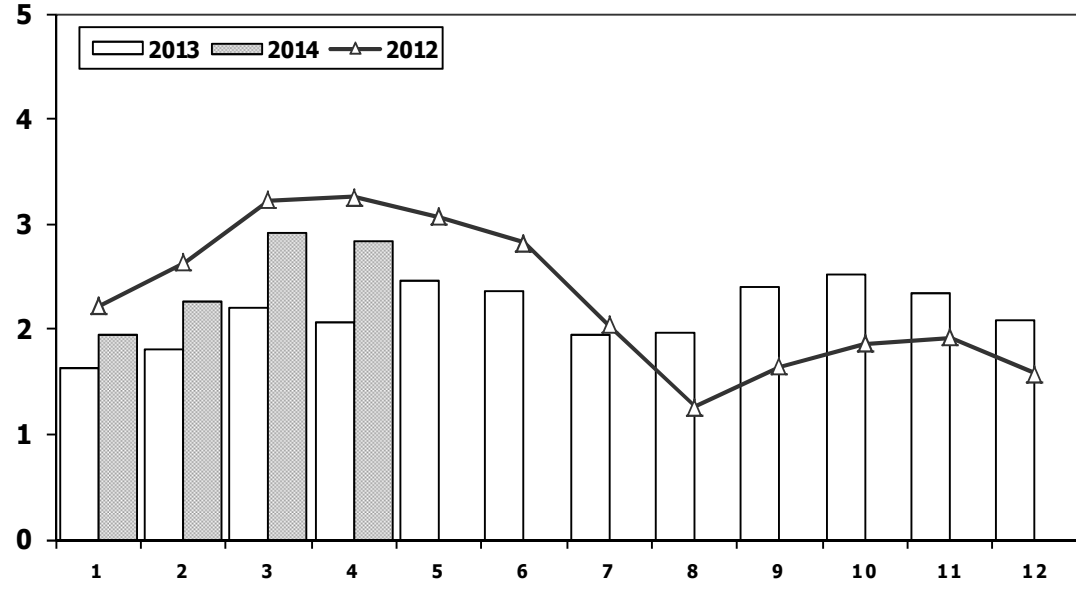
## Hafif Arac Pazarı (AYA < 3.5 Ton)

### Light Vehicle Market (GVW < 3.5 Ton)



## Traktör Pazarı (x1000)

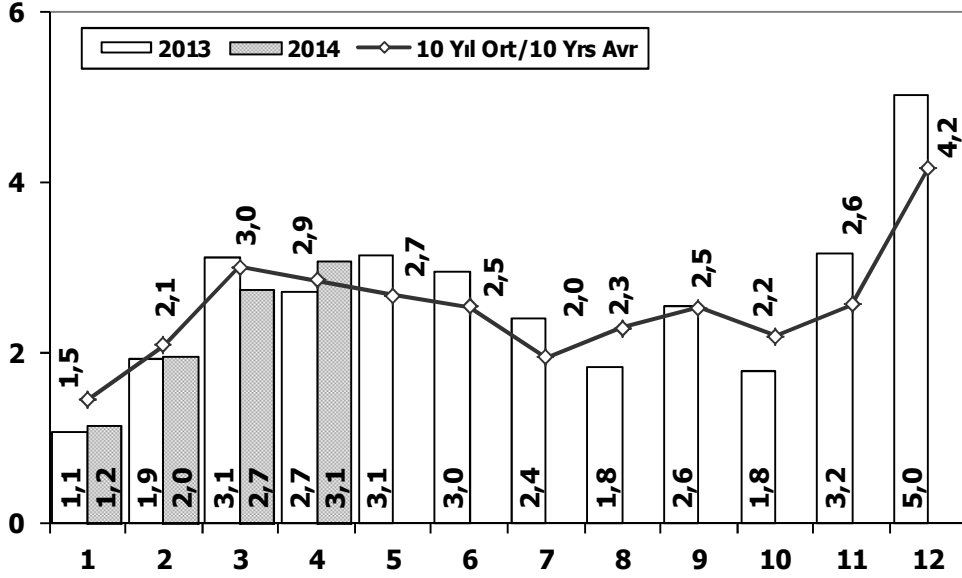
### F.Tractor Market (x1000)



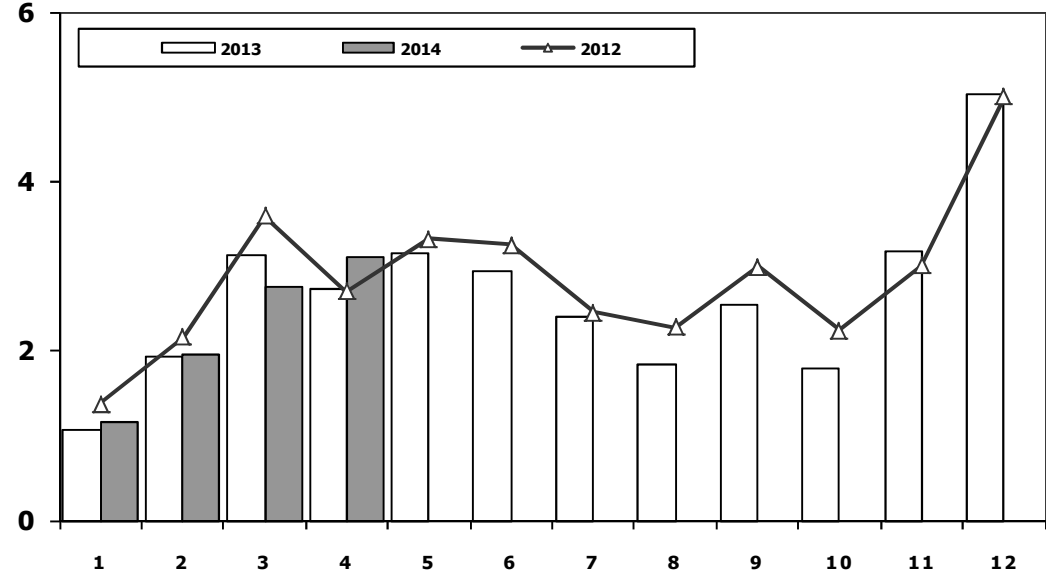
	2004	2005	2006	2007	2008	2009	2010	2011	2012	2013	2014
Otomobil/P.Cars	451.209	438.597	373.219	357.465	305.998	369.819	509.784	593.519	556.280	<b>664.655</b>	132.116
HTA/LCV	246.886	<b>271.811</b>	244.633	237.297	188.025	187.307	251.129	270.920	221.481	188.723	36.461
<b>TOTAL</b>	698.095	710.408	617.852	594.762	494.023	557.126	760.913	<b>864.439</b>	777.761	853.378	168.577
HTA/LCV (%)	35	38	40	<b>40</b>	38	34	33	31	28	22	22

	1	2	3	4	5	6	7	8	9	10	11	12	4 Ay/Mo	Total
<b>2004</b>	1.946	1.874	2.909	3.260	2.863	2.816	1.988	2.209	2.509	1.989	2.198	1.364	9.989	27.925
<b>2005</b>	1.026	1.636	2.001	2.599	2.569	2.780	2.148	2.819	2.567	2.477	2.297	2.089	7.262	27.008
<b>2006</b>	1.578	2.493	2.746	2.841	3.561	2.356	1.685	2.177	2.756	1.915	2.353	1.925	9.658	28.386
<b>2007</b>	1.812	1.778	2.063	2.107	2.266	1.853	1.653	2.065	2.372	2.239	2.231	1.602	7.760	24.041
<b>2008</b>	1.510	1.427	1.933	1.692	1.689	1.592	1.275	924	904	609	707	359	6.562	14.621
<b>2009</b>	267	344	388	638	759	828	741	534	586	765	725	715	1.637	7.290
<b>2010</b>	714	903	1.432	1.653	1.736	1.673	1.613	1.527	2.351	2.787	2.656	2.345	4.702	21.390
<b>2011</b>	2.458	2.610	3.105	<b>3.403</b>	3.847	3.599	2.952	1.559	2.957	2.823	2.603	2.807	<b>11.576</b>	<b>34.723</b>
<b>2012</b>	2.216	2.632	3.223	3.259	3.067	2.821	2.037	1.262	1.648	1.858	1.921	1.579	11.330	27.523
<b>2013</b>	1.633	1.817	2.196	2.070	2.455	2.370	1.955	1.969	2.396	2.510	2.343	2.080	7.716	25.794
<b>2014</b>	1.941	2.256	2.915	2.837	0	0	0	0	0	0	0	0	9.949	9.949

## Kamyon Pazarının Analizi (x1000) AYA > 5 Ton Truck Market Analysis (x1000) GVW > 5 Ton



## Kamyon Pazarı (x1000) AYA > 5 Ton Truck Market (x1000) GVW > 5 Ton

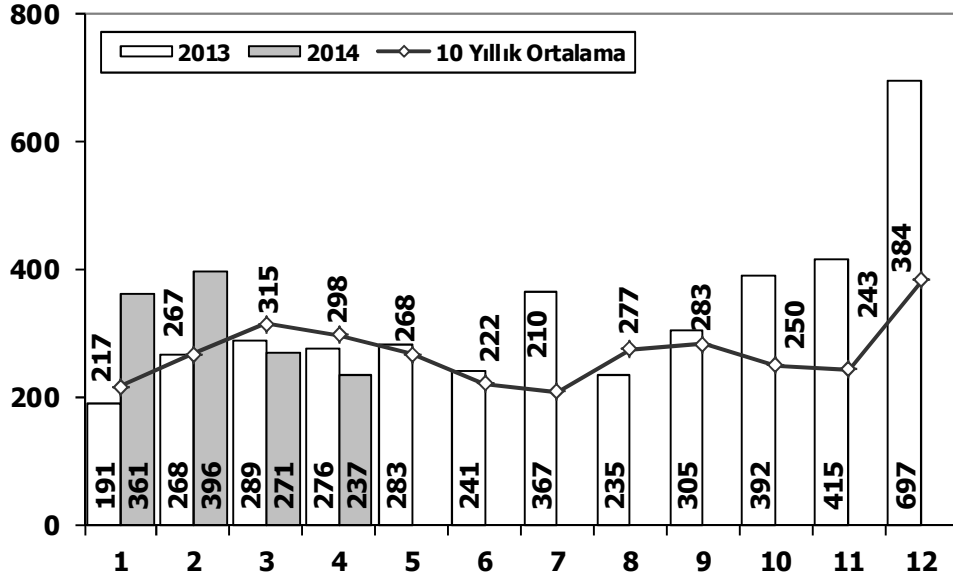


Aylar / Months	10 Yil Ort. 10 Yrs Avr. (x1000)	2014 (x100)	%
1	1,5	1,2	-19,8
2	2,1	2,0	-6,0
3	3,0	2,7	-8,8
4	2,9	3,1	8,2
<b>Total</b>	<b>9,4</b>	<b>9,0</b>	<b>-4,7</b>

	1	2	3	4	5	6	7	8	9	10	11	12	4 Ay/Mo	Total
2004	1.863	1.949	3.983	3.352	3.651	3.118	2.234	2.897	3.285	2.727	2.629	5.517	11.147	37.205
2005	1.693	2.186	3.288	3.484	3.413	3.147	2.504	4.028	4.043	3.708	3.918	6.570	10.651	41.982
2006	1.767	3.310	4.467	<b>4.180</b>	4.449	3.398	2.472	3.142	3.052	2.926	3.550	5.358	13.724	<b>42.071</b>
2007	1.554	2.055	3.065	2.940	2.865	2.613	2.372	3.145	2.988	2.886	3.258	4.444	9.614	34.185
2008	1.797	2.309	2.621	2.578	2.459	2.526	2.067	2.377	2.390	1.790	1.512	1.834	9.305	26.260
2009	771	759	1.034	1.342	1.355	1.651	1.156	1.205	1.780	866	981	2.015	3.906	14.915
2010	777	968	1.772	1.807	1.966	2.205	2.093	2.446	2.444	3.071	3.136	5.677	5.324	28.362
2011	2.552	3.292	4.418	3.754	3.803	3.749	1.996	2.478	3.081	2.774	3.108	5.787	<b>14.016</b>	40.792
2012	1.375	2.159	3.595	2.697	3.321	3.250	2.450	2.277	2.991	2.244	3.006	5.000	9.826	34.365
2013	1.077	1.931	3.127	2.720	3.145	2.951	2.411	1.845	2.554	1.801	3.173	5.025	8.855	31.760
2014	1.165	1.968	2.749	3.094	0	0	0	0	0	0	0	0	8.976	8.976

## Midibüs Pazarının Analizi (7-9 mt / 25-35 Kişilik)

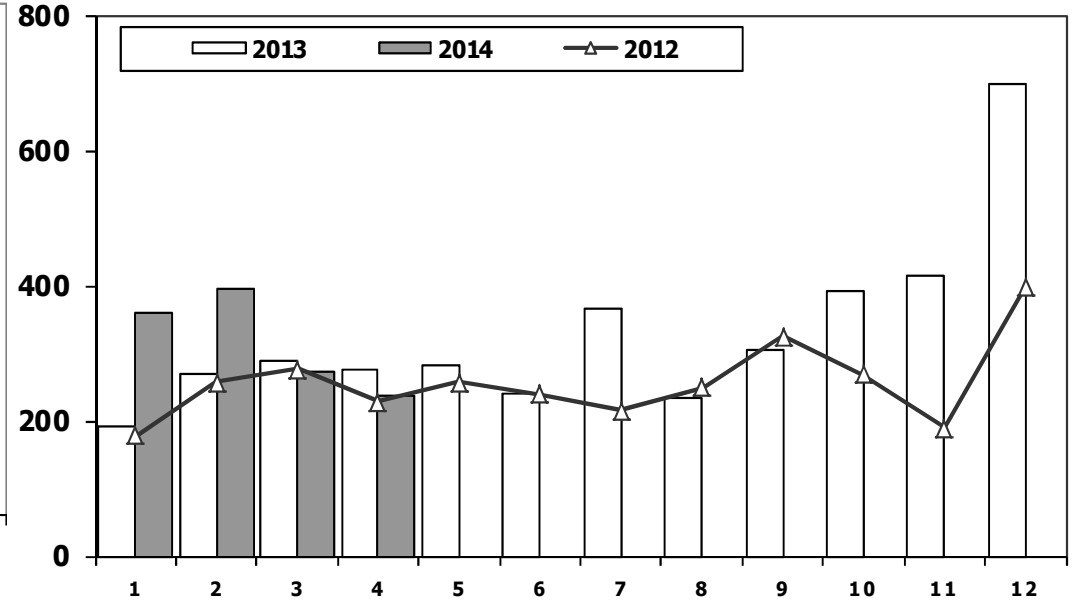
Midibus Market Analysis (7-9 mt / 25-35 Passengers)



Aylar / Months	10 Yıl Ort. 10 Yrs Avr.	2014	%
1	217	361	67
2	267	396	48
3	315	271	-14
4	298	237	-20
<b>Total</b>	<b>1.097</b>	<b>1.265</b>	<b>15</b>

## Midibüs Pazarı (7-9 mt / 25-35 Kişilik Midibüs)

Midibus Market (7-9 mt / 25-35 Passengers)

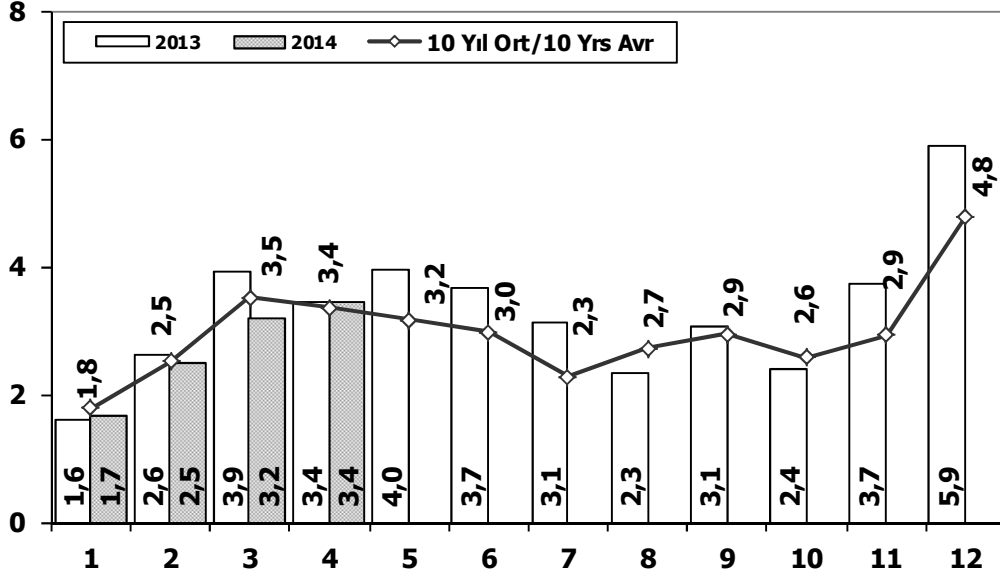


	1	2	3	4	5	6	7	8	9	10	11	12	4 Ay/Mo	Total
2004	233	226	381	431	524	237	154	531	445	331	319	551	1.271	4.363
2005	182	258	432	393	439	269	252	459	436	329	328	574	1.265	4.351
2006	207	297	406	388	381	266	230	353	322	253	305	401	1.298	3.809
2007	207	272	404	238	302	283	164	365	399	279	283	465	1.121	3.661
2008	391	476	436	512	419	331	368	380	341	352	246	270	1.815	4.522
2009	154	124	160	220	174	198	160	175	168	143	206	323	658	2.205
2010	155	131	185	167	140	138	129	246	236	206	202	437	638	2.372
2011	138	195	294	316	280	258	211	305	301	276	260	270	943	3.104
2012	179	257	277	229	257	239	216	249	325	269	189	398	942	3.084
2013	191	268	289	276	283	241	367	235	305	392	415	697	1.024	3.959
2014	361	396	271	237	0	0	0	0	0	0	0	0	1.265	1.265



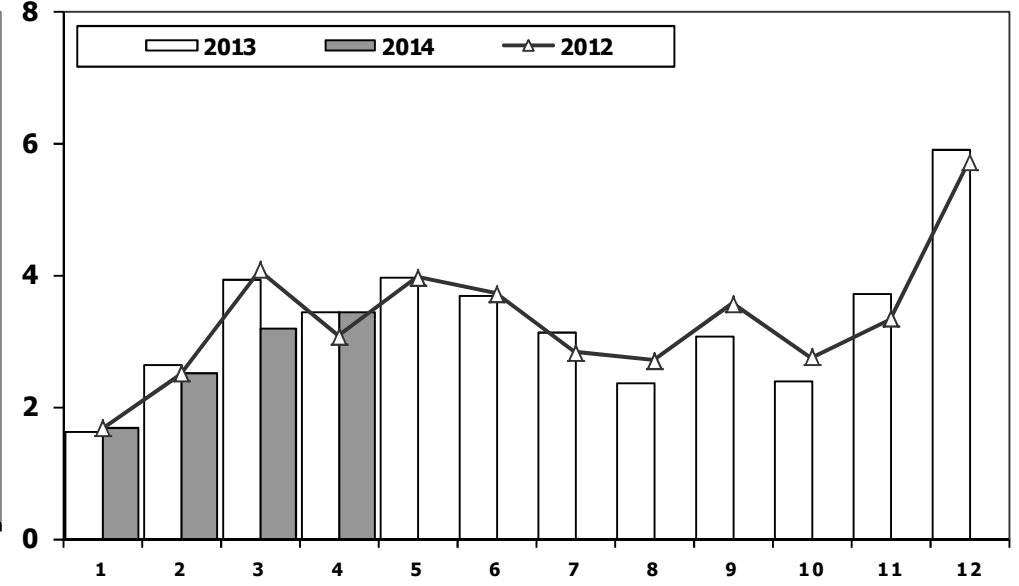
## Ağır Ticari Araç Pazarının Analizi (x1000)

### HCV Market Analysis (x1000)



## Ağır Ticari Araç Pazarı (x1000)

### HCV Market (x1000)



Aylar / Months	10 Yıl Ort. / 10 Yrs Avr. (x1000)	2013 (x1000)	%
1	1,8	1,7	-6,3
2	2,5	2,5	-0,8
3	3,5	3,2	-9,1
4	3,4	3,4	2,2
<b>Total</b>	<b>11,2</b>	<b>10,8</b>	<b>-3,4</b>

	1	2	3	4	5	6	7	8	9	10	11	12	4 Ay/Mo	Total
2004	2.269	2.310	4.579	3.981	4.344	3.498	2.491	3.546	3.820	3.153	3.037	6.146	13.139	43.174
2005	1.940	2.525	3.795	4.029	4.026	3.583	2.832	4.636	4.626	4.153	4.355	7.629	12.289	<b>48.129</b>
2006	2.052	3.708	5.038	<b>4.815</b>	5.060	3.848	2.786	3.607	3.520	3.263	4.031	5.935	15.613	47.663
2007	1.833	2.518	3.598	3.267	3.317	2.987	2.627	3.613	3.497	3.333	3.704	5.150	11.216	39.444
2008	2.265	2.870	3.165	3.266	3.029	3.069	2.536	2.922	2.897	2.263	1.899	2.340	11.566	32.521
2009	1.025	1.104	1.420	1.786	1.696	2.035	1.401	1.483	2.006	1.084	1.240	2.463	5.335	18.743
2010	955	1.141	2.059	2.133	2.251	2.494	2.373	2.881	2.787	3.376	3.444	6.365	6.288	32.259
2011	2.766	3.685	4.930	4.376	4.447	4.290	2.320	2.972	3.514	3.219	3.538	6.371	<b>15.757</b>	46.428
2012	1.674	2.503	4.073	3.065	3.957	3.714	2.818	2.700	3.568	2.739	3.335	5.713	11.315	39.859
2013	1.617	2.624	3.914	3.440	3.953	3.675	3.130	2.340	3.074	2.385	3.716	5.878	11.595	39.746
2014	1.668	2.498	3.200	3.436	0	0	0	0	0	0	0	0	10.802	10.802

## İhracat/Üretim (2004-2014)

Exports/Production (2004-2014)



	2004	2005	2006	2007	2008	2009	2010	2011	2012	2013	2014
Üretim/Production	864.073	916.062	1.026.427	1.132.951	1.171.917	884.466	1.124.982	1.234.637	1.115.233	1.166.043	370.582
İhracat/Exports	518.595	561.078	706.402	829.879	920.763	637.855	763.670	801.112	745.354	843.467	290.651
İhracat/Exports (%)	60	61	69	73	79	72	68	65	67	72	78

## Taşıt Araçları İhracatı

Motor Vehicle Exports

SEKTÖR/SECTOR	2012	2013	2013	2014	2014/2013 (%)
			4 Ay-4 Mo		
OTOMOBİL / P.Cars	412.991	484.504	150.834	192.146	27
TİCARİ ARAÇLAR / CV	316.932	343.967	124.535	93.776	-25
* Kamyonet/Pick-Up	292.601	300.765	110.729	85.235	-23
* Minibüs/Minibus	16.429	34.664	11.941	6.655	-44
* Kamyon/Truck	2.682	3.055	384	341	-11
* Midibüs/Midibus	1.173	985	356	249	-30
* Otobüs/Bus	4.047	4.498	1.125	1.296	15
<b>TAŞIT ARAÇLARI / MV TOTAL</b>	<b>729.923</b>	<b>828.471</b>	<b>275.369</b>	<b>285.922</b>	<b>4</b>
TRAKTÖR/F.TRACTOR	15.431	14.996	4.733	4.729	0
<b>TOTAL</b>	<b>745.354</b>	<b>843.467</b>	<b>280.102</b>	<b>290.651</b>	<b>4</b>

## Otomotiv Ana ve Yan Sanayii İhracatı (ABD \$)

CBU and CKD Exports - \$

SEKTÖR/SECTOR	2011 Toplam (Total)	2012 Toplam (Total)	2013 Toplam (Total)	2013	2014	2014/2013 (%)
				4 Ay (4 Months)		
<b>Toplam Yan Sanayi/Total Component Industry</b>	<b>6.595.662.583</b>	<b>8.307.826.870</b>	<b>8.223.513.061</b>	<b>2.929.650.921</b>	<b>3.328.189.671</b>	<b>14</b>
İç ve Dış Lastik / Tyres	988.990.821	1.373.205.546	1.200.828.712	394.315.106	431.656.480	9
Emniyet Camı / Safety Glasses	107.203.983	120.041.467	120.710.174	45.677.540	52.793.532	16
Motor (Engine)	305.490.804	273.896.369	272.085.582	106.689.676	61.959.711	-42
Akümülatör / Batteries	186.504.496	232.611.079	250.345.945	87.716.964	86.410.900	-1
Diğer Aksam ve Parça / Spare Parts and Components	5.007.472.478	6.308.072.409	6.379.542.648	2.295.251.635	2.695.369.048	17
<b>Toplam Ana Sanayi/Total Vehicle Industry</b>	<b>10.855.476.447</b>	<b>12.128.522.618</b>	<b>11.101.346.096</b>	<b>4.012.307.752</b>	<b>4.449.567.560</b>	<b>11</b>
Otobüs / Bus	744.935.284	929.372.870	856.072.335	259.052.339	293.923.194	13
Midibüs-Minibüs / Minibus- Minibus	120.378.674	145.199.034	161.806.275	46.825.512	13.084.495	-72
Otomobil (P. Cars)	6.217.404.551	6.541.969.418	6.067.964.588	2.261.002.593	2.538.954.656	12
Kamyon-Kamyonet/HCV-LCV	3.363.101.038	4.034.772.621	3.433.318.136	1.263.868.534	1.389.603.226	10
Çekici/Truck-Tractor	145.710.283	116.912.332	195.260.385	70.367.996	84.836.892	21
Römork ve Yarı Römork/Trailer-Semi Trailer	72.145.150	147.247.613	71.336.635	8.300.325	9.753.205	18
Tarım Traktörü/Farm Tractor	191.801.467	213.048.730	315.587.742	102.890.453	119.411.893	16
<b>Toplam/Total</b>	<b>17.451.139.030</b>	<b>20.436.349.488</b>	<b>19.324.859.157</b>	<b>6.941.958.673</b>	<b>7.777.757.232</b>	<b>12</b>

Kaynak: Otomotiv Endüstrisi İhracatçıları Birliği



**Firma Bazında İhracat (Adet)**  
Export Of member Companies (Unit)

FİRMALAR Companies	2012	2013	Ocak-Nisan 4 Months	
			2013	2014
OYAK RENAULT	227.162	266.508	95.218	86.867
HYUNDAI ASSAN	67.453	85.500	22.480	53.625
FORD OTOSAN	191.149	208.722	76.911	53.035
TOFAŞ	154.068	160.309	57.952	48.580
TOYOTA	63.549	86.908	16.442	41.721
TÜRK TRAKTÖR	14.572	14.402	4.601	4.381
M. BENZ TÜRK	4.054	5.331	939	858
HONDA TÜRKİYE	7.959	2.121	698	450
MAN TÜRKİYE	885	898	317	348
HATTAT TARIM	859	594	132	348
A.I.O.S.	943	770	307	259
TEMSA GLOBAL	856	663	170	127
OTOKAR	510	620	103	44
KARSAN	10.994	10.120	3.831	8
BMC	341	1	1	0
<b>GENEL TOPLAM</b>	<b>745.354</b>	<b>843.467</b>	<b>280.102</b>	<b>290.651</b>

Kaynak: OSD

**Sektör Bazında İhracat (\$)**  
Exports on Sectorial Basis

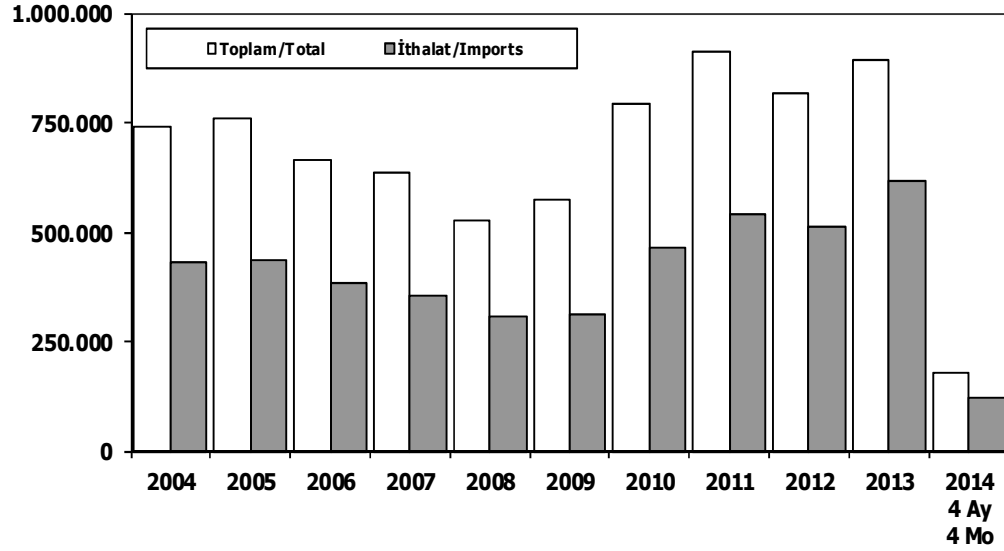
Sıra No	Sektörler	2013 Toplam	Ocak-Nisan			
			2013	2014	2014/2013 (%)	2014 (%) Pay
1	<b>Otomotiv Endüstrisi</b>	<b>21.305.104</b>	<b>6.899.081</b>	<b>7.641.953</b>	<b>10,8</b>	<b>14,3</b>
2	Kimyevi Maddeler ve Mamülleri	17.441.096	5.618.509	5.783.354	2,9	10,8
3	Hazırcılık ve Konfeksiyon	17.372.633	5.608.514	6.225.659	11,0	11,7
4	Çelik	13.835.180	5.043.635	4.683.436	-7,1	8,8
5	Elektrik-Elektronik ve Makina	11.701.482	3.494.366	3.969.915	13,6	7,4
6	Tekstil ve Hammaddeleri	8.391.398	2.766.330	3.046.455	10,1	5,7
7	Demir ve Demir Dışı Metaller	6.834.461	2.216.552	2.410.620	8,8	4,5
8	Hububat, Bakliyat, Yağlı Tohumlar	6.586.157	2.023.057	2.380.867	17,7	4,5
9	İhracatçı Birlikleri Kaydından Muaf İhracat	***	1.955.472	3.238.254	65,6	6,1
10	Makine ve Aksamları	6.263.742	1.879.689	1.979.179	5,3	3,7
11	Madencilik Ürünleri	5.801.970	1.564.472	1.503.575	-3,9	2,8
12	Ağaç Mamülleri, Orman Ürünleri	5.042.322	1.343.841	1.471.323	9,5	2,8
13	İklimlendirme Sanayi	4.458.639	1.283.743	1.479.063	15,2	2,8
14	Çimento ve Toprak Ürünleri	4.200.543	1.045.764	1.070.446	2,4	2,0
15	Yaş Meyve ve Sebze	3.153.737	737.048	789.997	7,2	1,5
16	Mücevher	2.351.780	703.843	798.518	13,5	1,5
17	Halı	2.253.003	687.538	750.440	9,1	1,4
18	Su Ürünleri ve Hayvansal Mamüller	1.988.676	620.440	793.789	27,9	1,5
19	Fındık ve Mamülleri	2.196.267	581.407	642.004	10,4	1,2
20	Deri ve Deri Mamülleri	1.901.404	543.835	567.550	4,4	1,1
21	Kuru Meyve ve Mamülleri	1.773.285	432.822	443.989	2,6	0,8
22	Meyve Sebze Mamülleri	1.391.603	385.312	465.152	20,7	0,9
23	Savunma Sanayi	1.439.207	383.388	456.664	19,1	0,9
24	Tütün ve Mamülleri	1.331.417	366.096	349.338	-4,6	0,7
25	Gemi ve Yat	1.163.591	333.126	317.270	-4,8	0,6
26	Zeytin ve Zeytin Yağı	906.814	197.637	90.648	-54,1	0,2
27	Diğer Sanayi Ürünleri	439.742	38.120	38.980	2,3	0,1
28	Süs Bitkileri	104.659	33.895	40.015	18,1	0,1
	<b>TOPLAM</b>	<b>151.629.912</b>	<b>48.787.532</b>	<b>53.428.453</b>	<b>9,5</b>	<b>100,0</b>

Kaynak: TİM

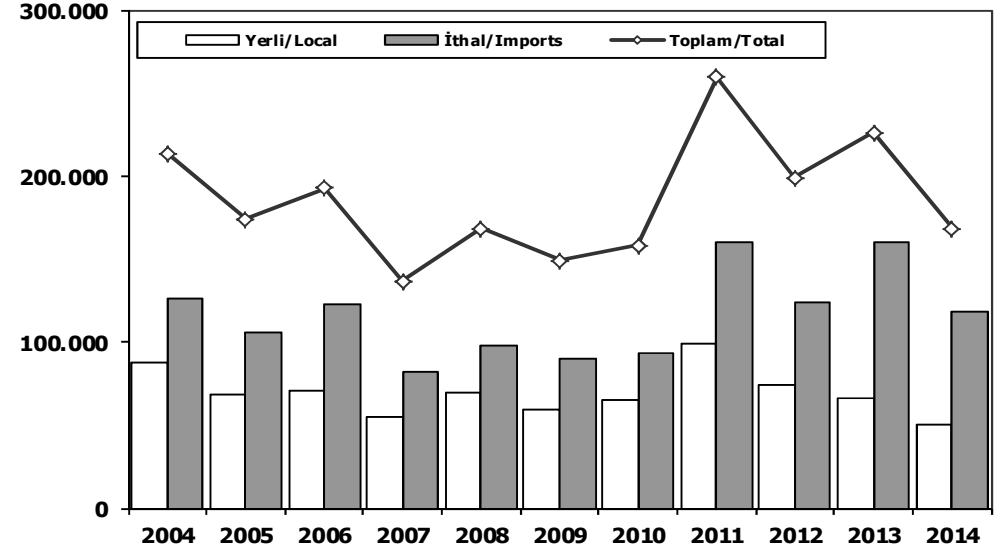
**First 5 Sectors:**

- 1- Transport Vehicle and Component Industry
- 2- Chemical Articles and Products
- 3-Ready Wear and Confection
- 4- Iron Steel Products
- 5-Electric-Electronic and Machine

## Toplam Pazar (Otomobil+T.Araç) Total Market (P.Cars+C.V)



## Hafif Araçlar Pazarı (2004-2014 Ocak-Nisan) LV Market (2004-2014 January-April)

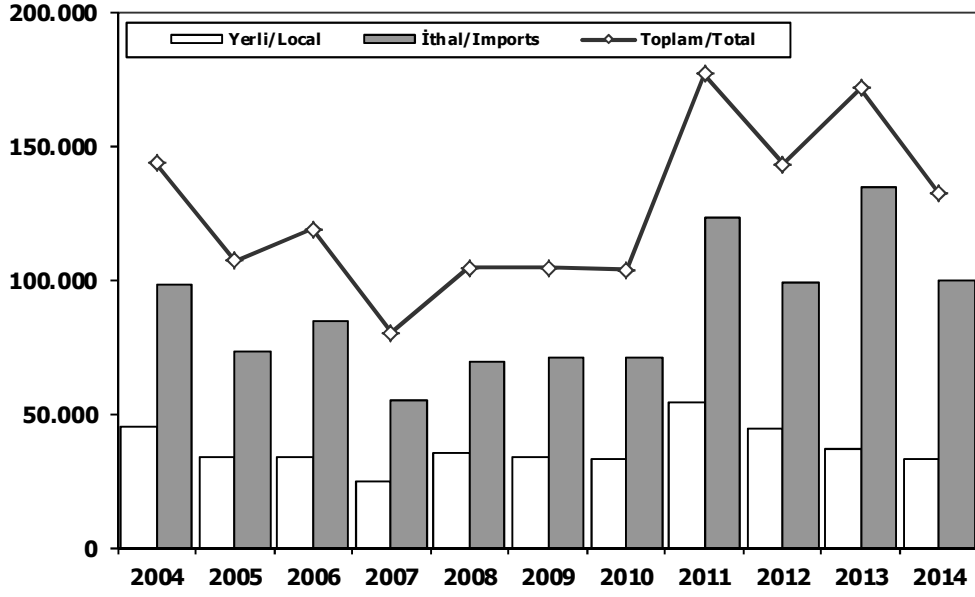


	2004	2005	2006	2007	2008	2009	2010	2011	2012	2013	2013 4 Ay 4 Mo	2014 4 Ay 4 Mo
Toplam/Total	741.269	758.537	665.515	634.206	526.544	575.869	793.172	<b>910.867</b>	817.620	893.124	237.774	179.379
İthalat/Imports	430.204	436.033	382.460	355.752	306.087	313.921	465.408	<b>538.532</b>	511.694	615.609	163.054	120.825
İthalat/Imports (%)	58	57	57	56	58	55	59	59	63	<b>69</b>	69	67

	2004	2005	2006	2007	2008	2009	2010	2011	2012	2013	2014
Yerli/Local	87.790	68.580	70.629	55.037	69.948	58.967	64.884	<b>99.295</b>	74.521	65.834	50.531
İthal/Imports	125.860	105.484	122.316	81.520	98.180	90.132	93.098	<b>160.358</b>	124.181	160.345	118.046
Toplam/Total	213.650	174.064	192.945	136.557	168.128	149.099	157.982	<b>259.653</b>	198.702	226.179	168.577
İthalat/Imports (%)	59	61	63	60	58	60	59	62	62	<b>71</b>	70

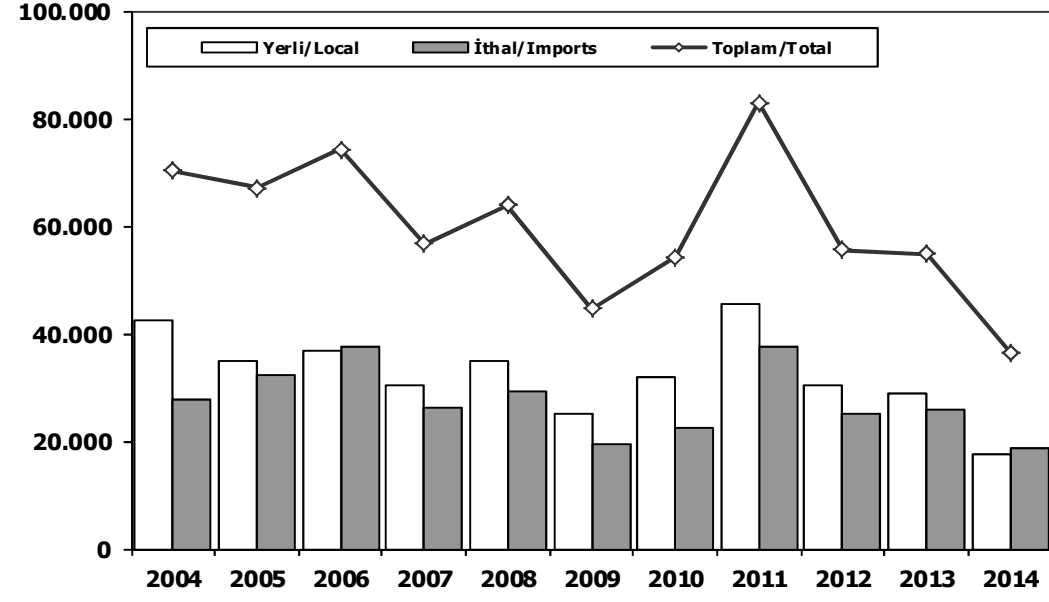
## Otomobil Pazarı (2004-2014 Ocak-Nisan)

### P.Cars Market (2004-2014 January-April)



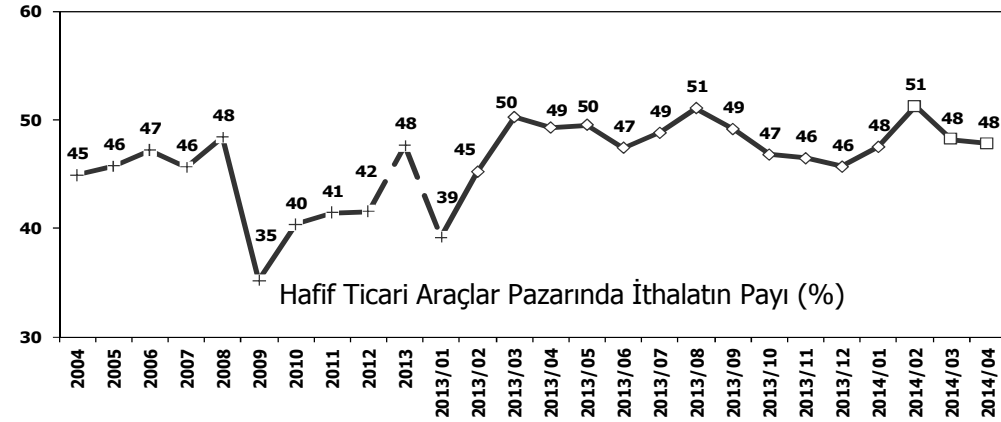
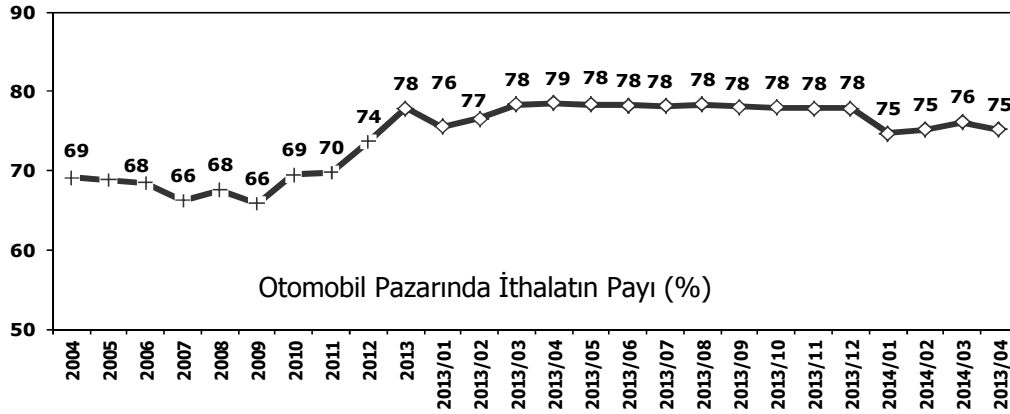
## Hafif Ticari Araçlar Pazarı (2004-2014 Ocak-Nisan)

### Light Commercial Vehicle Market (2004-2014 January-April)

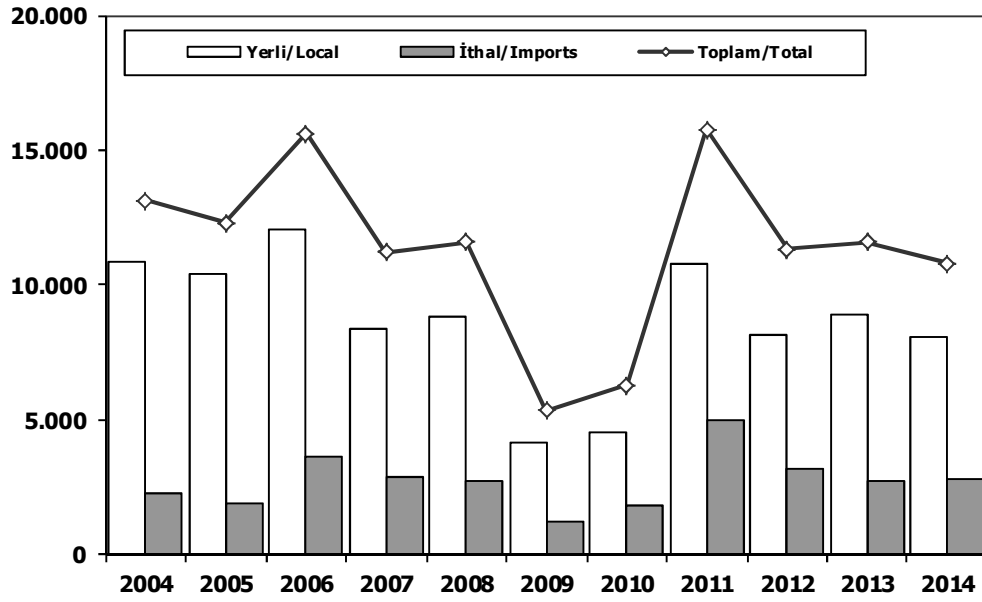


	2004	2005	2006	2007	2008	2009	2010	2011	2012	2013	2014
Yerli/Local	45.279	33.846	33.897	24.676	35.175	33.776	33.164	53.940	44.255	36.802	32.808
İthal/Imports	98.111	73.096	84.711	55.262	69.069	70.713	70.588	122.790	98.926	134.631	99.308
Toplam/Total	143.390	106.942	118.608	79.938	104.244	104.489	103.752	176.730	143.181	171.433	132.116
İthalat/Imports (%)	68	68	71	69	66	68	68	69	69	79	75

	2004	2005	2006	2007	2008	2009	2010	2011	2012	2013	2014
Yerli/Local	42.511	34.734	36.732	30.361	34.773	25.191	31.720	45.355	30.266	29.032	17.723
İthal/Imports	27.749	32.388	37.605	26.258	29.111	19.419	22.510	37.568	25.255	25.714	18.738
Toplam/Total	70.260	67.122	74.337	56.619	63.884	44.610	54.230	82.923	55.521	54.746	36.461
İthalat/Imports (%)	39	48	51	46	46	44	42	45	45	47	51

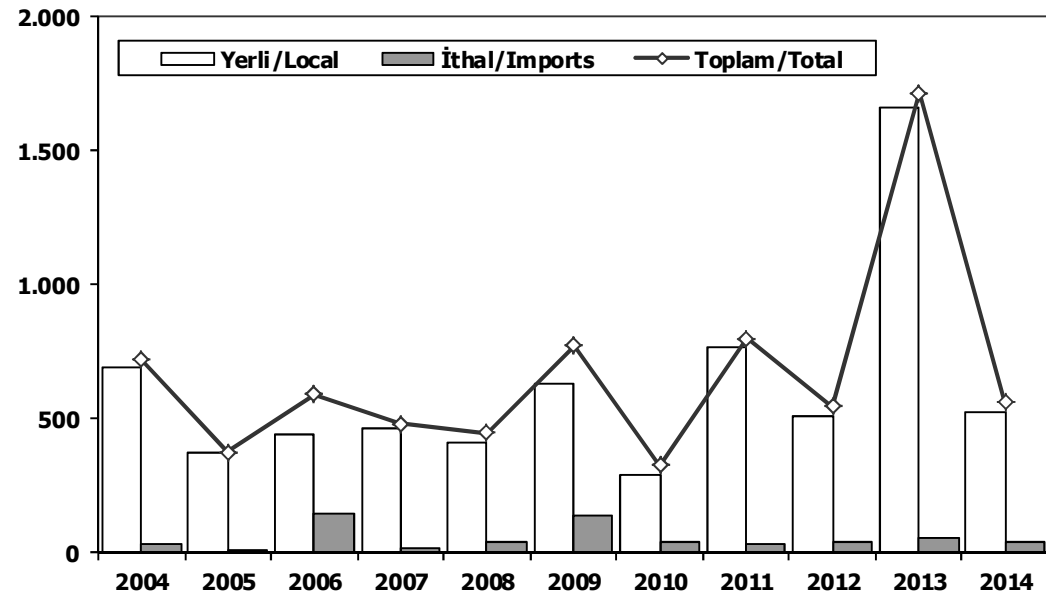


## Ağır Ticari Araçlar Pazarı (2004-2014 Ocak-Nisan) HCV Market (2004-2014 January-April)



	2004	2005	2006	2007	2008	2009	2010	2011	2012	2013	2014
Yerli/Local	10.868	10.404	<b>12.026</b>	8.327	8.825	4.165	4.482	10.809	8.118	8.886	8.023
İthal/Imports	2.271	1.885	3.587	2.889	2.741	1.170	1.806	<b>4.948</b>	3.197	2.709	2.779
Toplam/Total	13.139	12.289	15.613	11.216	11.566	5.335	6.288	<b>15.757</b>	11.315	11.595	10.802
İthalat/Imports (%)	17	15	23	26	24	22	29	<b>31</b>	28	23	26

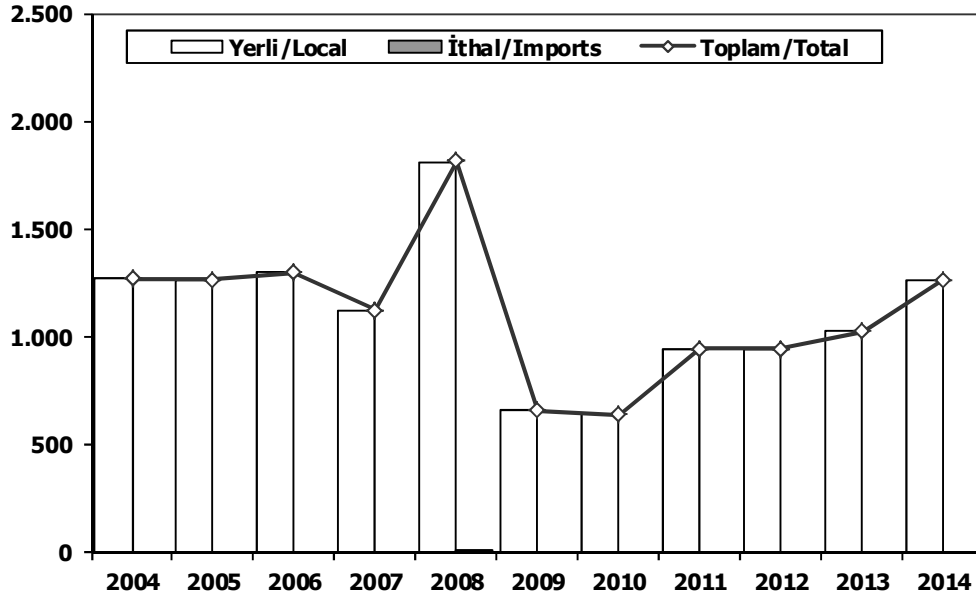
## Otobüs Pazarı (2004-2014 Ocak-Nisan) Bus Market (2004-2014 January-April)



	2004	2005	2006	2007	2008	2009	2010	2011	2012	2013	2014
Yerli/Local	693	369	443	467	410	631	289	767	508	<b>1.661</b>	521
İthal/Imports	28	4	<b>148</b>	14	36	140	37	31	39	55	40
Toplam/Total	721	373	591	481	446	771	326	798	547	<b>1.716</b>	561
İthalat/Imports (%)	4	1	<b>25</b>	3	8	18	11	4	7	3	7

## Midibüs Pazarı (2004-2014 Ocak-Nisan) (7-9 mt/25-35 Kişilik)

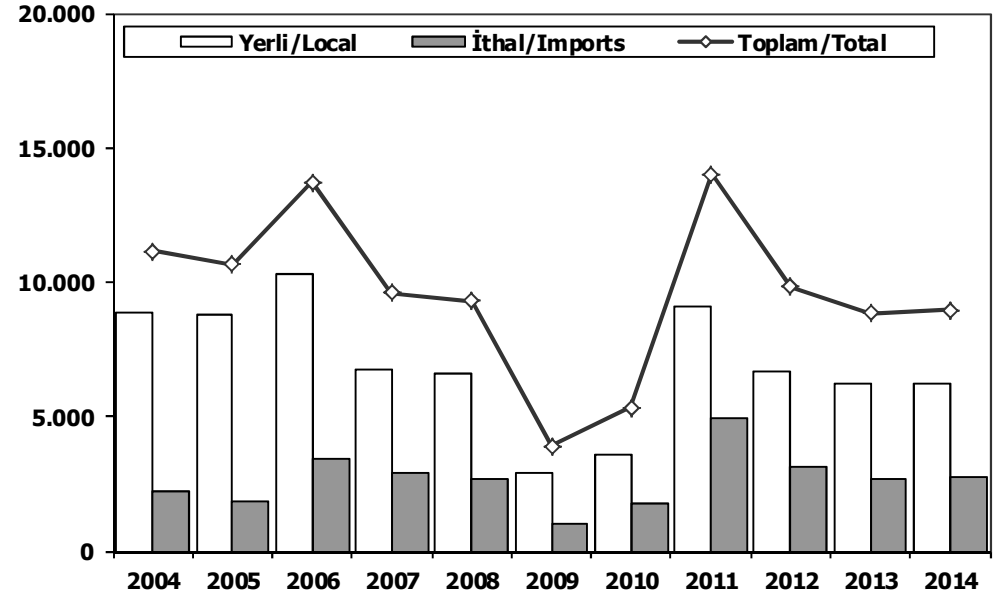
### Midibus Market (2004-2014 January-April) (7-9 mt/25-35 Passengers)



	2004	2005	2006	2007	2008	2009	2010	2011	2012	2013	2014
Yerli/Local	1.271	1.265	1.298	1.121	<b>1.806</b>	658	638	943	942	1.024	1.265
İthal/Imports	0	0	0	0	<b>9</b>	0	0	0	0	0	0
Toplam/Total	1.271	1.265	1.298	1.121	<b>1.815</b>	658	638	943	942	1.024	1.265
İthalat/Imports (%)	0	0	0	0	0	0	0	0	0	0	0

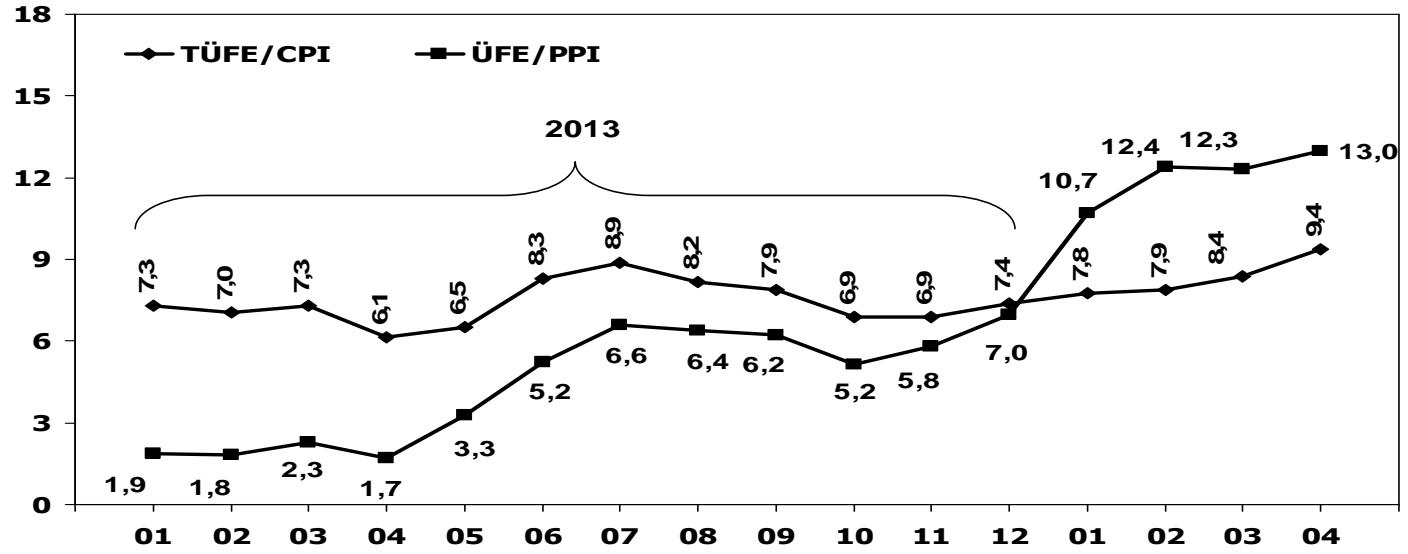
## Kamyon Pazarı (2004-2014 Ocak-Nisan)

### Truck Market (2004-2014 January-April)

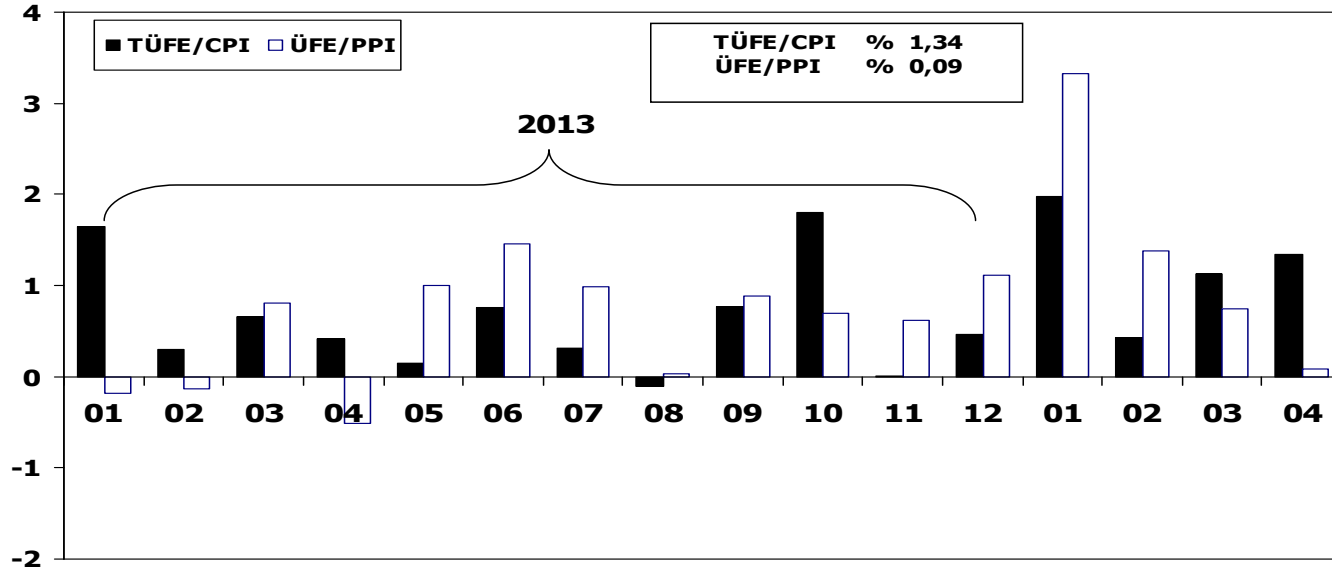


	2004	2005	2006	2007	2008	2009	2010	2011	2012	2013	2014
Yerli/Local	8.904	8.770	<b>10.285</b>	6.739	6.609	2.876	3.555	9.099	6.668	6.201	6.237
İthal/Imports	2.243	1.881	3.439	2.875	2.696	1.030	1.769	<b>4.917</b>	3.158	2.654	2.739
Toplam/Total	11.147	10.651	13.724	9.614	9.305	3.906	5.324	<b>14.016</b>	9.826	8.855	8.976
İthalat/Imports (%)	20	18	25	30	29	26	33	<b>35</b>	32	30	31

## TÜFE ve ÜFE'nin Yıllık Değişimi (%) CPI and PPI Yearly Changes (%)



## TÜFE ve ÜFE'nin Aylık Değişimi (%) CPI and PPI Monthly Changes (%)





## 2014 Yılı İthal Hafif Araç Satışları 2014 Light Vehicles Import Sales

	2013 TOPLAMI 2013 Total	1	2	3	4	5	6	7	8	9	10	11	12	2014 TOPLAMI 2014 Total
VOLKSWAGEN	88.304	4.242	5.080	6.247	7.025	0	0	0	0	0	0	0	0	22.594
RENAULT	32.904	1.719	1.616	2.101	1.842	0	0	0	0	0	0	0	0	7.278
OPEL	55.719	1.672	1.374	2.316	2.833	0	0	0	0	0	0	0	0	8.195
NISSAN	18.417	741	1.603	2.355	1.237	0	0	0	0	0	0	0	0	5.936
FORD	58.405	1.389	1.244	1.621	2.400	0	0	0	0	0	0	0	0	6.654
DACIA	28.901	1.158	1.229	1.854	1.586	0	0	0	0	0	0	0	0	5.827
HYUNDAI	29.824	882	1.125	1.362	1.675	0	0	0	0	0	0	0	0	5.044
MERCEDES	20.023	582	900	1.783	1.619	0	0	0	0	0	0	0	0	4.884
B.M.W	20.705	334	617	1.875	1.852	0	0	0	0	0	0	0	0	4.678
PEUGEOT	23.068	622	871	1.258	1.208	0	0	0	0	0	0	0	0	3.959
AUDI	14.987	455	750	1.175	1.391	0	0	0	0	0	0	0	0	3.771
CITROEN	19.690	657	715	790	1.062	0	0	0	0	0	0	0	0	3.224
SKODA	12.833	458	632	747	907	0	0	0	0	0	0	0	0	2.744
KIA	13.195	483	462	694	733	0	0	0	0	0	0	0	0	2.372
SEAT	11.065	536	352	524	762	0	0	0	0	0	0	0	0	2.174
TOYOTA	22.421	366	363	512	682	0	0	0	0	0	0	0	0	1.923
FIAT	10.913	587	313	306	553	0	0	0	0	0	0	0	0	1.759
VOLVO	5.021	252	256	412	509	0	0	0	0	0	0	0	0	1.429
HONDA	3.394	142	257	285	455	0	0	0	0	0	0	0	0	1.139
CHEVROLET	12.506	206	161	134	29	0	0	0	0	0	0	0	0	530
SUBARU	1.101	120	70	116	91	0	0	0	0	0	0	0	0	397
MINI (İngiliz)	1.557	51	51	150	45	0	0	0	0	0	0	0	0	297
SUZUKI	1.623	76	68	98	99	0	0	0	0	0	0	0	0	341
LAND ROVER	1.323	26	52	142	95	0	0	0	0	0	0	0	0	315
MITSUBISHI	1.488	83	81	53	70	0	0	0	0	0	0	0	0	287
JEEP	973	31	66	64	71	0	0	0	0	0	0	0	0	232
PROTON	715	110	22	24	74	0	0	0	0	0	0	0	0	230
MAZDA	1.377	30	40	69	133	0	0	0	0	0	0	0	0	272
ALFA ROMEO	1.030	60	26	32	44	0	0	0	0	0	0	0	0	162
PORSCHE	517	45	31	27	41	0	0	0	0	0	0	0	0	144
SSANGYONG	972	44	16	38	52	0	0	0	0	0	0	0	0	150
LANCIA	782	8	31	44	69	0	0	0	0	0	0	0	0	152
CHERY	492	17	16	34	34	0	0	0	0	0	0	0	0	101
GEELY	623	12	5	9	8	0	0	0	0	0	0	0	0	34
MASERATI	40	6	8	9	4	0	0	0	0	0	0	0	0	27
SMART	110	4	5	8	8	0	0	0	0	0	0	0	0	25
JAGUAR	97	0	8	3	5	0	0	0	0	0	0	0	0	16
FERRARI	23	0	3	2	0	0	0	0	0	0	0	0	0	5
BENTLEY	21	0	2	1	0	0	0	0	0	0	0	0	0	3
INFINITI	37	1	0	1	0	0	0	0	0	0	0	0	0	2
LAMBORGHINI	4	0	1	0	0	0	0	0	0	0	0	0	0	1
TATA	326	1	0	0	0	0	0	0	0	0	0	0	0	1
<b>TOPLAM</b>	<b>517.526</b>	<b>18.208</b>	<b>20.522</b>	<b>29.275</b>	<b>31.303</b>	<b>0</b>	<b>0</b>	<b>0</b>	<b>0</b>	<b>0</b>	<b>0</b>	<b>0</b>	<b>0</b>	<b>99.308</b>

### 2014 YILI İTHAL HAFİF TİCARİ ARAÇ SATIŞLARI / Light Commercial Vehicles Import 2014

	2013 TOPLAMI 2013 Total	1	2	3	4	5	6	7	8	9	10	11	12	2014 TOPLAMI 2014 Total
VOLKSWAGEN	23.752	1.152	1.144	1.365	1.779	0	0	0	0	0	0	0	0	5.440
MERCEDES	10.421	490	389	712	456	0	0	0	0	0	0	0	0	2.047
RENAULT	11.550	565	431	556	484	0	0	0	0	0	0	0	0	2.036
FIAT	6.245	397	455	414	557	0	0	0	0	0	0	0	0	1.823
DACIA	7.494	510	400	315	340	0	0	0	0	0	0	0	0	1.565
CITROEN	6.679	234	103	318	386	0	0	0	0	0	0	0	0	1.041
MITSUBISHI	3.592	229	180	201	266	0	0	0	0	0	0	0	0	876
TOYOTA	2.413	139	105	349	116	0	0	0	0	0	0	0	0	709
ISUZU	2.587	228	138	174	177	0	0	0	0	0	0	0	0	717
PEUGEOT	8.323	78	105	249	445	0	0	0	0	0	0	0	0	877
IVECO	2.204	77	127	212	181	0	0	0	0	0	0	0	0	597
HYUNDAI	1.480	117	86	73	117	0	0	0	0	0	0	0	0	393
KIA	453	47	44	62	102	0	0	0	0	0	0	0	0	255
SSANGYONG	859	63	55	11	33	0	0	0	0	0	0	0	0	162
TATA	316	20	34	16	29	0	0	0	0	0	0	0	0	99
FORD	657	1	23	12	16	0	0	0	0	0	0	0	0	52
NISSAN	878	9	2	20	13	0	0	0	0	0	0	0	0	44
MAZDA	3	0	5	0	0	0	0	0	0	0	0	0	0	5
<b>TOPLAM</b>	<b>89.906</b>	<b>4.356</b>	<b>3.826</b>	<b>5.059</b>	<b>5.497</b>	<b>0</b>	<b>0</b>	<b>0</b>	<b>0</b>	<b>0</b>	<b>0</b>	<b>0</b>	<b>0</b>	<b>18.738</b>