



OTOMOTİV SANAYİ DERNEĞİ  
AUTOMOTIVE MANUFACTURERS ASSOCIATION

# AYLIK RAPOR

## Automotive Industry Monthly Report

Ağustos / August 2015

- **Üretim/Production**
- **Satış/Sales**
- **İthalat/Imports**
- **İhracat/Exports**

OSD "OICA" Üyesidir



OSD is a Member of "OICA"

## 2015 Ağustos Ayı Özeti / 2015 August Summary

| KONULAR/MATTERS       |                 | AĞUSTOS / AUGUST |               |               | 8 AY / 8 MONTHS |                |               | SON 12 AYLIK / YoY |                |               |
|-----------------------|-----------------|------------------|---------------|---------------|-----------------|----------------|---------------|--------------------|----------------|---------------|
|                       |                 | 2014             | 2015          | 2015/2014 (%) | 2014            | 2015           | 2015/2014 (%) | 2014               | 2015           | 2015/2014 (%) |
| Üretim/Production     | Toplam/Total    | 57.278           | 76.987        | 34            | 719.501         | 857.307        | 19            | 1.116.408          | 1.308.251      | 17            |
|                       | Otomobil/P.Cars | 37.330           | 45.210        | 21            | 459.372         | 499.652        | 9             | 693.645            | 773.719        | 12            |
| Pazar/Market          | Toplam/Total    | 62.837           | 84.875        | 35            | 430.167         | 626.766        | 46            | 780.216            | 1.004.085      | 29            |
|                       | Otomobil/P.Cars | 45.131           | 61.753        | 37            | 317.506         | 453.817        | 43            | 582.732            | 723.642        | 24            |
| İthalat/Import        | Toplam/Total    | 43.247           | 59.257        | 37            | 289.089         | 410.877        | 42            | 528.782            | 644.630        | 22            |
|                       | Otomobil/P.Cars | 35.014           | 48.075        | 37            | 238.643         | 339.378        | 42            | 443.374            | 530.717        | 20            |
| İhracat/Export        | Toplam/Total    | 37.947           | 56.794        | 50            | 569.973         | 616.926        | 8             | 856.986            | 932.133        | 9             |
|                       | Otomobil/P.Cars | 26.433           | 35.805        | 35            | 379.093         | 376.970        | -1            | 555.230            | 579.870        | 4             |
| İhracat / Export (\$) | Toplam/Total ** | 1.321.121.710    | 1.400.424.726 | 6             | 15.280.439.532  | 13.795.298.355 | -10           | 22.962.294.851     | 21.284.294.084 | -7            |
|                       | Otomobil/P.Cars | 305.086.121      | 371.630.693   | 22            | 4.892.432.048   | 4.409.711.364  | -10           | 7.181.544.086      | 6.761.713.503  | -6            |

| PARAMETRELER / PARAMETERS     |  | AĞUSTOS / AUGUST |        |               | 8 AY / 8 MONTHS |        |               | SON 12 AYLIK / YoY |        |               |
|-------------------------------|--|------------------|--------|---------------|-----------------|--------|---------------|--------------------|--------|---------------|
|                               |  | 2014             | 2015   | 2015/2014 (%) | 2014            | 2015   | 2015/2014 (%) | 2014               | 2015   | 2015/2014 (%) |
| ÜFE/PPI                       |  | 0,42             | 0,98   | **            | 6,33            | 6,19   | **            | 9,88               | 6,14   | **            |
| TÜFE/CPI                      |  | 0,09             | 0,40   | **            | 6,28            | 5,27   | **            | 8,46               | 7,88   | **            |
| Sanayi Endeksi/Industry Index |  | 0,59             | 0,91   | **            | 7,75            | 6,78   | **            | 10,99              | 6,86   | **            |
| \$ (*)                        |  | 2,1597           | 2,8438 | 32            | 2,1604          | 2,6355 | 22            | 2,1213             | 2,5079 | 18            |
| EURO (*)                      |  | 2,8431           | 3,1547 | 11            | 2,9353          | 2,9238 | 0             | 2,8855             | 2,8836 | 0             |
| Japon Yeni (*)                |  | 2,0645           | 2,3060 | 12            | 2,1064          | 2,1640 | 3             | 2,0758             | 2,0942 | 1             |

(\*) Ortalama Değerler / Average Values

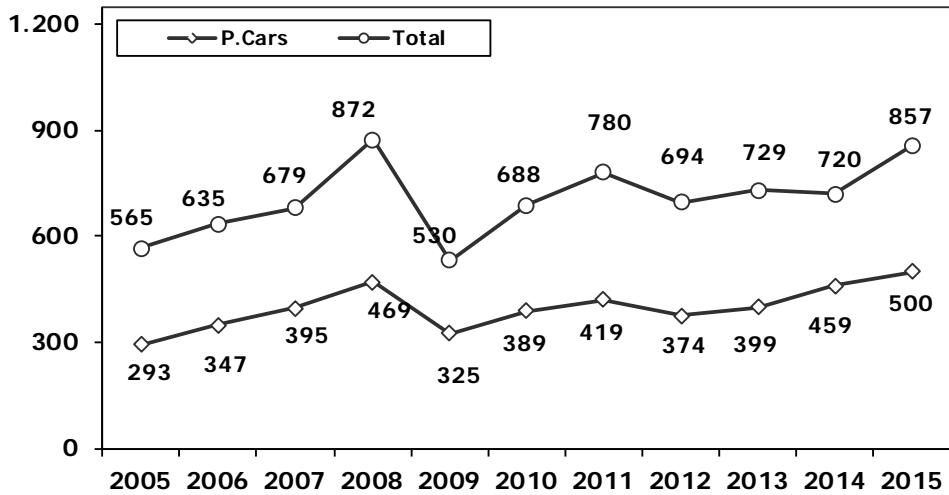
(\*\*) Toplam Sanayi / Total Industry Including Components

## 2014/2015 Yılları Üretim 2014/2015 Production

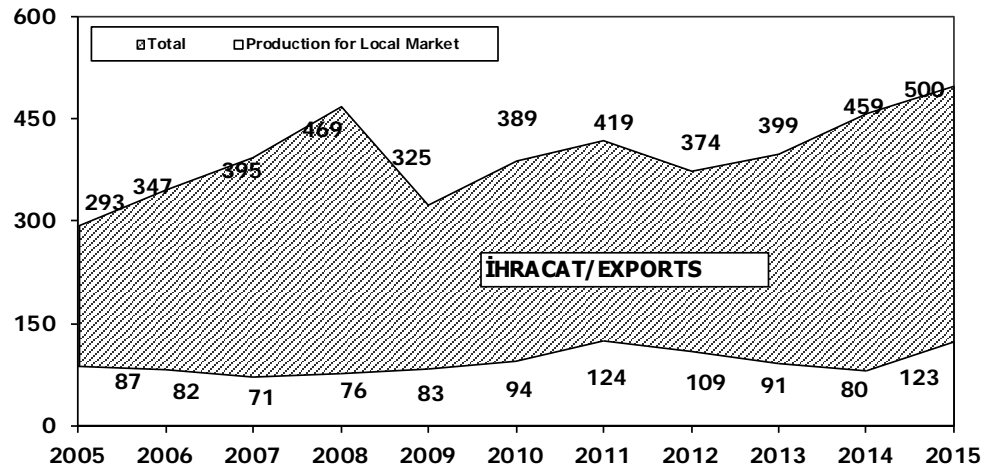
K.KAMYON : AYA 3.5-12 Ton (L.Truck:GVW 3.5-12 Ton)  
B.KAMYON : AYA 12 Ton'dan Büyük (M.Truck:GVW 12 Ton And Up)

| TİPLER                                      | AĞUSTOS AYI ÜRETİMİ<br>August Production |               | 8 AYLIK ÜRETİM<br>8 Months Production |                | DEĞİŞİM %<br>Percent Change % |                  |
|---|--|---------------|---------------------------------------|----------------|-------------------------------|------------------|
|   | 2014                                     | 2015          | 2014                                  | 2015           | AĞUSTOS                       | 8 AY<br>8 Months |
| <b>OTOMOBİL - Pass.Car</b>                  | <b>37.330</b>                            | <b>45.210</b> | <b>459.372</b>                        | <b>499.652</b> | <b>21</b>                     | <b>9</b>         |
| <b>TİCARİ ARAÇLAR - Commercial Vehicles</b> | <b>19.948</b>                            | <b>31.777</b> | <b>260.129</b>                        | <b>357.655</b> | <b>59</b>                     | <b>37</b>        |
| * B. KAMYON - M. Truck                      | 1.971                                    | 2.430         | 17.822                                | 20.862         | 23                            | 17               |
| * K. KAMYON - L. Truck                      | 212                                      | 305           | 2.036                                 | 2.523          | 44                            | 24               |
| * KAMYONET - Pick Up                        | 14.698                                   | 24.807        | 211.441                               | 284.559        | 69                            | 35               |
| * OTOBÜS - Bus                              | 534                                      | 635           | 4.446                                 | 5.476          | 19                            | 23               |
| * MİNİBÜS - Minibus                         | 2.061                                    | 3.009         | 20.484                                | 40.013         | 46                            | 95               |
| * MİDİBÜS - Midibus                         | 472                                      | 591           | 3.900                                 | 4.222          | 25                            | 8                |
| <b>TAŞIT ARAÇLARI TOPLAM - MV Total</b>     | <b>57.278</b>                            | <b>76.987</b> | <b>719.501</b>                        | <b>857.307</b> | <b>34</b>                     | <b>19</b>        |
| <b>TRAKTÖR - F.Tractor</b>                  | <b>2.932</b>                             | <b>4.739</b>  | <b>31.611</b>                         | <b>34.251</b>  | <b>62</b>                     | <b>8</b>         |
| <b>GENEL TOPLAM - Grand Total</b>           | <b>60.210</b>                            | <b>81.726</b> | <b>751.112</b>                        | <b>891.558</b> | <b>36</b>                     | <b>19</b>        |

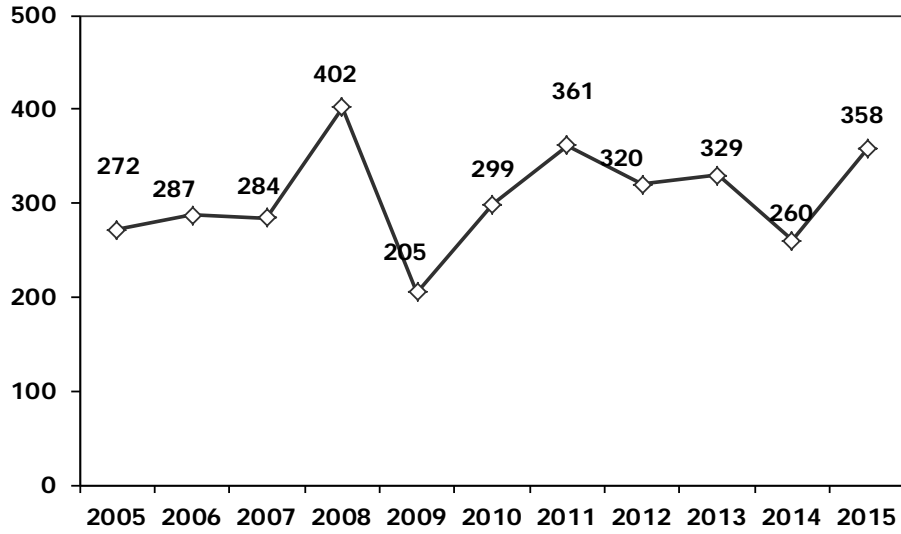
**Toplam Üretim ve Otomobil Üretimi** (x1000) (Ocak-Ağustos)  
Total & P.Cars Production (x1000) (January- August)



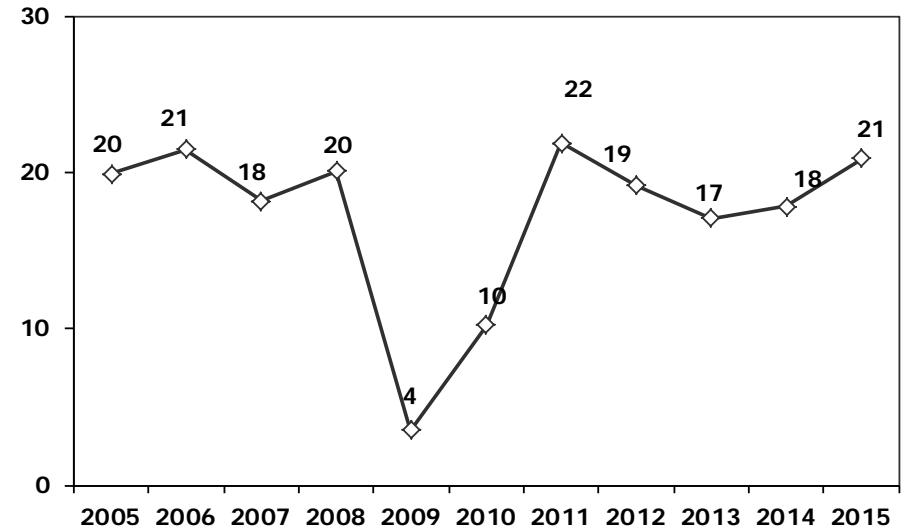
**Otomobil Üretimi ve İhracat** (x1000) (Ocak-Ağustos)  
P.Cars Production & Exports (x1000) (January- August)



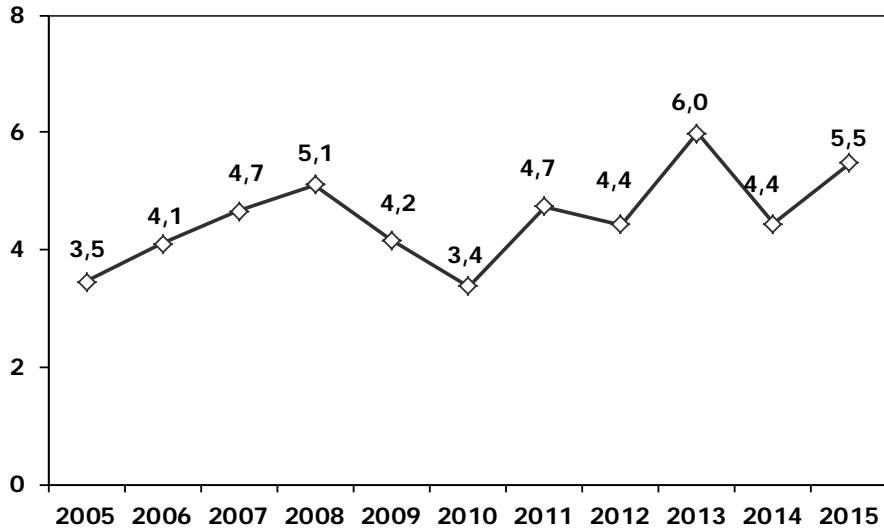
**Ticari Araç Üretimi** (x1000) (Ocak-Ağustos)  
Commercial Vehicle Production (x1000) (January- August)



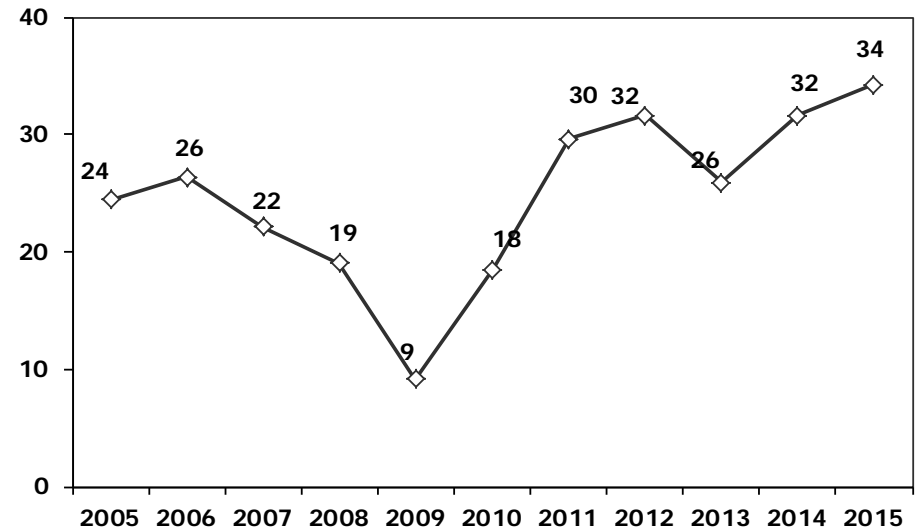
(AYA >12 Ton) **Büyük Kamyon Üretimi** (x1000) (Ocak-Ağustos)  
(GVW >12 Ton) Heavy Truck Production (x1000) (January- August)



**Otobüs Üretimi** (x1000) (Ocak-Ağustos)  
Bus Production (x1000) (January- August)

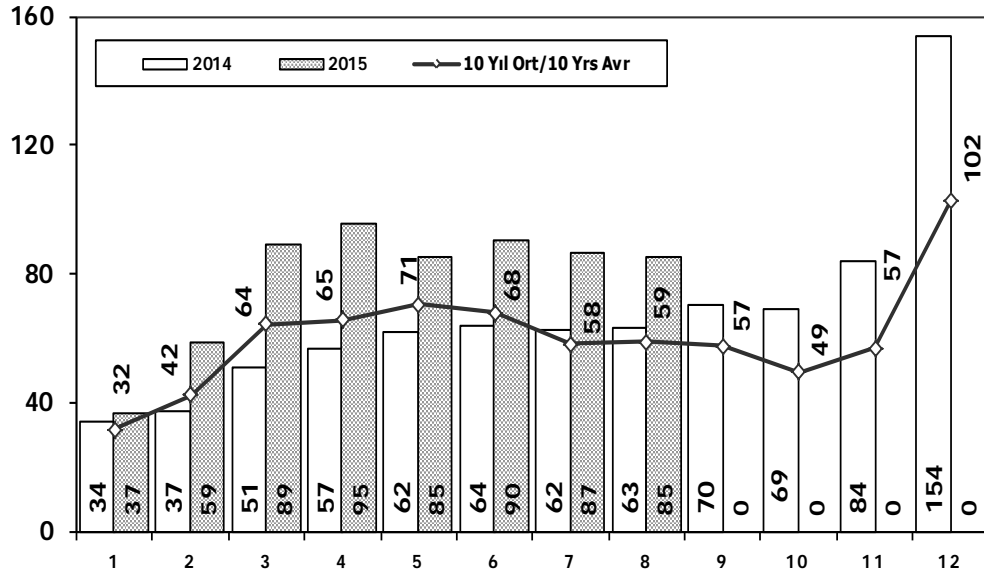


**Traktör Üretimi** (x1000) (Ocak-Ağustos)  
F. Tractor Production (x1000) (January- August)



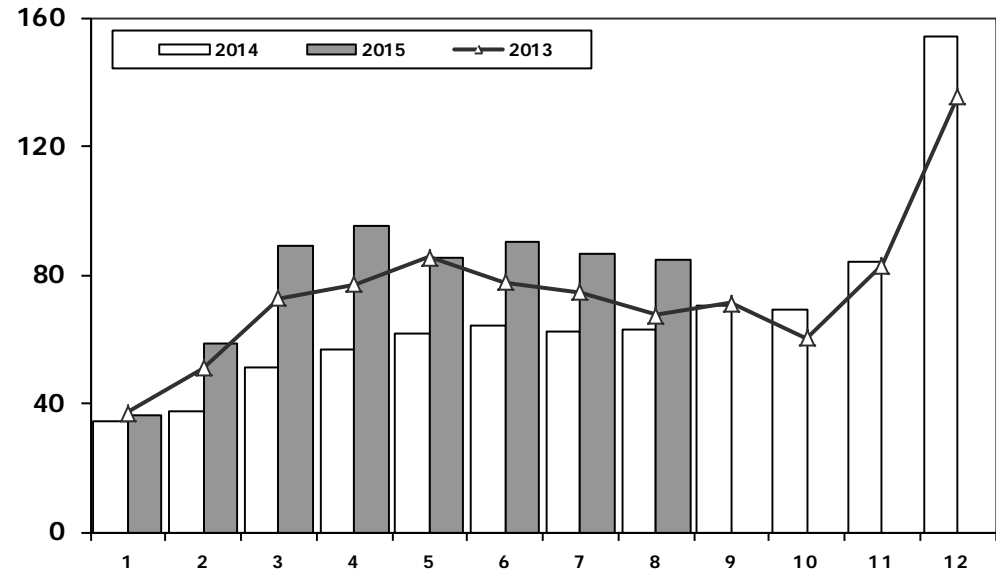
## Toplam Pazarın Analizi (x1000)

### Total Market Analysis (x1000)



## Toplam Pazar (x1000)

### Total Market (x1000)

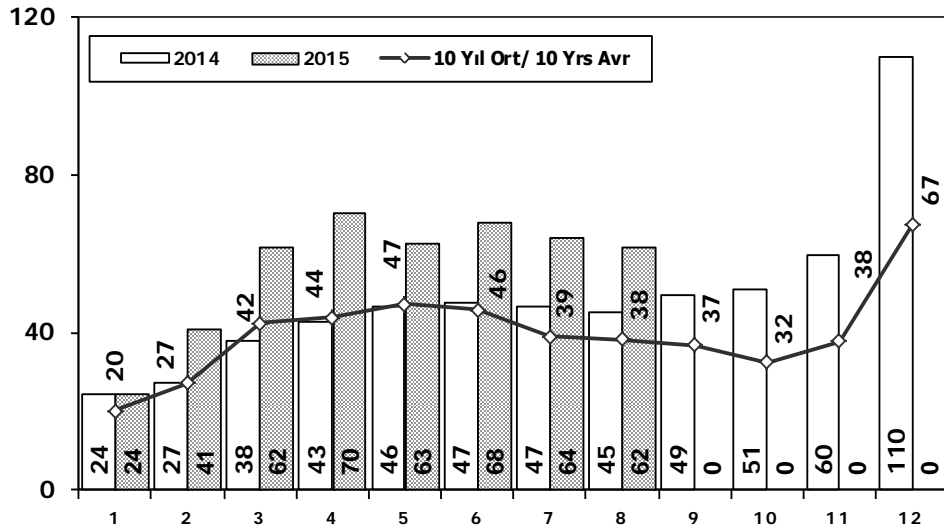


| Aylar / Months | 10 Yil Ort. / 10 Yrs Avr. (x1000) | 2015 (x1000) | %           |
|----------------|-----------------------------------|--------------|-------------|
| 1              | 31,7                              | 36,6         | 15,3        |
| 2              | 42,3                              | 58,5         | 38,5        |
| 3              | 64,3                              | 89,1         | 38,6        |
| 4              | 65,4                              | 95,4         | 45,9        |
| 5              | 70,5                              | 85,1         | 20,8        |
| 6              | 67,9                              | 90,5         | 33,3        |
| 7              | 58,3                              | 86,6         | 48,6        |
| 8              | 58,7                              | 84,9         | 44,5        |
| <b>Total</b>   | <b>459,1</b>                      | <b>626,8</b> | <b>36,5</b> |

|      | 1      | 2      | 3      | 4      | 5      | 6      | 7      | 8      | 9      | 10     | 11     | 12      | 8 Ay/Mo | Total   |
|------|--------|--------|--------|--------|--------|--------|--------|--------|--------|--------|--------|---------|---------|---------|
| 2005 | 22.687 | 38.291 | 64.502 | 60.873 | 71.383 | 64.379 | 63.847 | 68.647 | 66.580 | 60.791 | 65.719 | 110.838 | 454.609 | 758.537 |
| 2006 | 29.969 | 44.646 | 65.090 | 68.853 | 83.289 | 58.203 | 40.037 | 47.374 | 49.629 | 39.805 | 55.898 | 82.722  | 437.461 | 665.515 |
| 2007 | 24.950 | 31.702 | 45.488 | 45.633 | 51.255 | 51.661 | 50.117 | 54.171 | 50.078 | 56.058 | 67.017 | 106.076 | 354.977 | 634.206 |
| 2008 | 33.792 | 38.121 | 56.814 | 50.967 | 51.627 | 49.393 | 44.692 | 46.592 | 46.829 | 35.147 | 28.152 | 44.418  | 371.998 | 526.544 |
| 2009 | 20.631 | 22.846 | 56.531 | 54.426 | 64.887 | 63.102 | 30.246 | 37.092 | 83.403 | 22.117 | 29.202 | 91.386  | 349.761 | 575.869 |
| 2010 | 21.050 | 32.313 | 53.828 | 57.079 | 61.628 | 63.390 | 63.718 | 64.645 | 66.601 | 76.780 | 77.406 | 154.734 | 417.651 | 793.172 |
| 2011 | 47.658 | 62.348 | 83.333 | 82.071 | 85.093 | 85.863 | 65.364 | 61.378 | 63.643 | 72.640 | 67.195 | 134.281 | 573.108 | 910.867 |
| 2012 | 31.219 | 43.827 | 68.957 | 66.014 | 74.820 | 74.781 | 65.122 | 60.848 | 73.197 | 62.677 | 75.045 | 121.113 | 485.588 | 817.620 |
| 2013 | 37.140 | 50.931 | 72.688 | 77.015 | 85.421 | 77.771 | 74.726 | 67.383 | 71.037 | 60.399 | 83.017 | 135.596 | 543.075 | 893.124 |
| 2014 | 34.225 | 37.308 | 50.964 | 56.766 | 61.909 | 63.952 | 62.206 | 62.839 | 70.180 | 69.259 | 83.937 | 153.941 | 430.169 | 807.486 |
| 2015 | 36.579 | 58.532 | 89.121 | 95.431 | 85.144 | 90.462 | 86.622 | 84.875 | 0      | 0      | 0      | 0       | 626.766 | 626.766 |

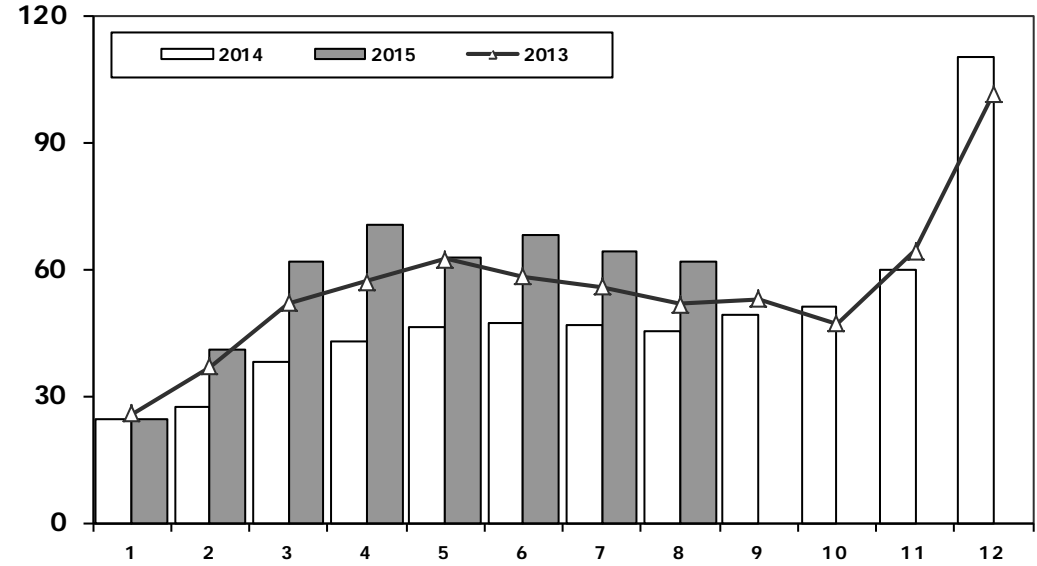
## Otomobil Pazarının Analizi (x1000)

P.Cars Market Analysis (x1000)



## Otomobil Pazarı (x1000)

P.Cars Market (x1000)

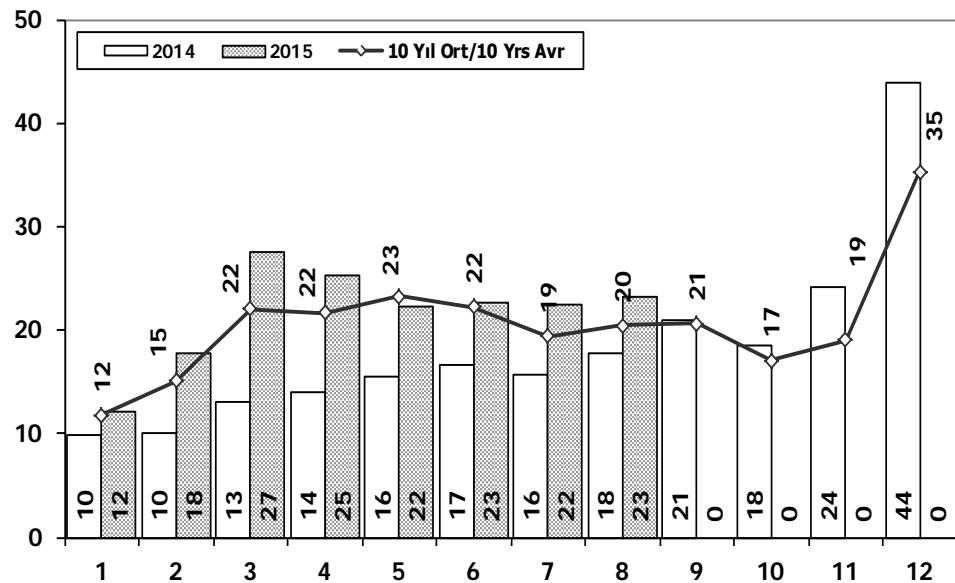


| Aylar / Months | 10 Yil Ort. 10 Yrs Avr. (x1000) | 2015 (x1000) | %           |
|----------------|---------------------------------|--------------|-------------|
| 1              | 20,0                            | 24,5         | 22,7        |
| 2              | 27,1                            | 40,8         | 50,4        |
| 3              | 42,3                            | 61,7         | 45,9        |
| 4              | 43,8                            | 70,2         | 60,3        |
| 5              | 47,2                            | 62,9         | 33,2        |
| 6              | 45,6                            | 67,8         | 48,7        |
| 7              | 38,9                            | 64,2         | 65,1        |
| 8              | 38,3                            | 61,8         | 61,3        |
| <b>Total</b>   | <b>303,2</b>                    | <b>453,8</b> | <b>49,7</b> |

|      | 1      | 2      | 3      | 4      | 5      | 6      | 7      | 8      | 9      | 10     | 11     | 12      | 8 Ay/Mo | Total   |
|------|--------|--------|--------|--------|--------|--------|--------|--------|--------|--------|--------|---------|---------|---------|
| 2005 | 11.595 | 21.012 | 38.129 | 36.206 | 38.480 | 40.900 | 38.969 | 38.648 | 36.410 | 34.960 | 37.841 | 65.447  | 263.939 | 438.597 |
| 2006 | 16.506 | 24.929 | 36.996 | 40.177 | 48.521 | 32.982 | 22.653 | 24.873 | 27.517 | 21.237 | 30.477 | 46.351  | 247.637 | 373.219 |
| 2007 | 13.186 | 17.212 | 24.336 | 25.204 | 29.067 | 30.126 | 28.246 | 28.469 | 27.662 | 32.569 | 39.643 | 61.745  | 195.846 | 357.465 |
| 2008 | 18.588 | 21.196 | 34.147 | 30.313 | 31.477 | 28.724 | 25.530 | 26.102 | 27.053 | 19.788 | 17.201 | 25.879  | 216.077 | 305.998 |
| 2009 | 13.173 | 14.492 | 40.622 | 36.202 | 44.188 | 41.019 | 16.637 | 22.537 | 52.162 | 13.828 | 17.781 | 57.178  | 228.870 | 369.819 |
| 2010 | 12.594 | 20.651 | 33.958 | 36.549 | 40.467 | 42.086 | 41.399 | 42.222 | 42.477 | 47.859 | 50.061 | 99.461  | 269.926 | 509.784 |
| 2011 | 29.868 | 39.004 | 54.023 | 53.835 | 56.302 | 56.714 | 43.518 | 38.875 | 39.964 | 47.508 | 44.951 | 88.957  | 372.139 | 593.519 |
| 2012 | 21.077 | 29.189 | 47.270 | 45.645 | 50.460 | 50.849 | 44.531 | 41.236 | 49.360 | 43.440 | 52.297 | 80.926  | 330.257 | 556.280 |
| 2013 | 25.835 | 36.814 | 51.785 | 56.999 | 62.383 | 58.290 | 55.712 | 51.611 | 52.925 | 46.985 | 64.117 | 101.199 | 399.429 | 664.655 |
| 2014 | 24.368 | 27.167 | 37.812 | 42.769 | 46.379 | 47.278 | 46.602 | 45.131 | 49.262 | 50.814 | 59.695 | 110.054 | 317.506 | 587.331 |
| 2015 | 24.498 | 40.817 | 61.676 | 70.211 | 62.878 | 67.766 | 64.218 | 61.753 | 0      | 0      | 0      | 0       | 453.817 | 453.817 |

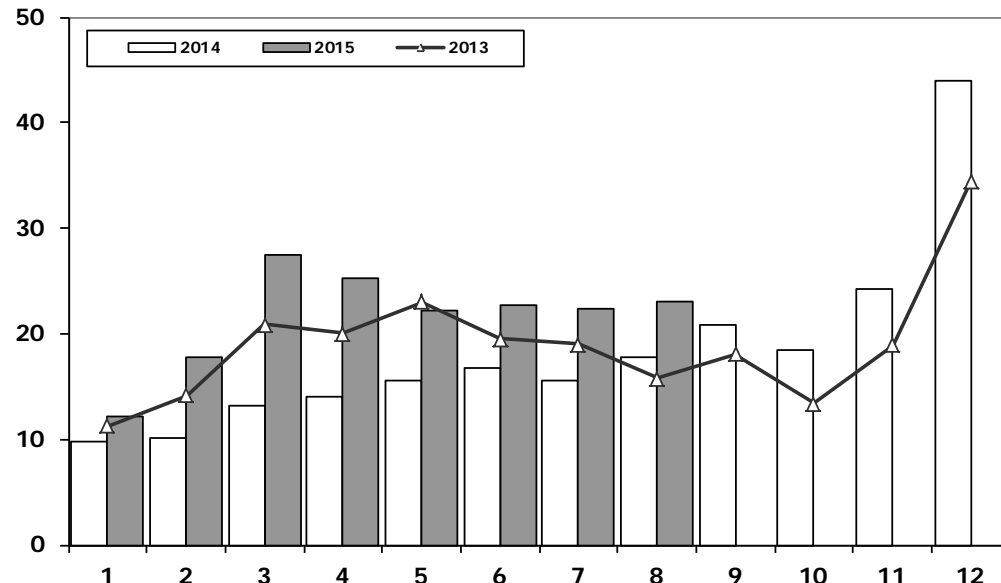
## Ticari Araç Pazarının Analizi (x1000)

CV Market Analysis (x1000)



## Ticari Araç Pazarı (x1000)

CV Total Market (Local + Imports) (x1000)

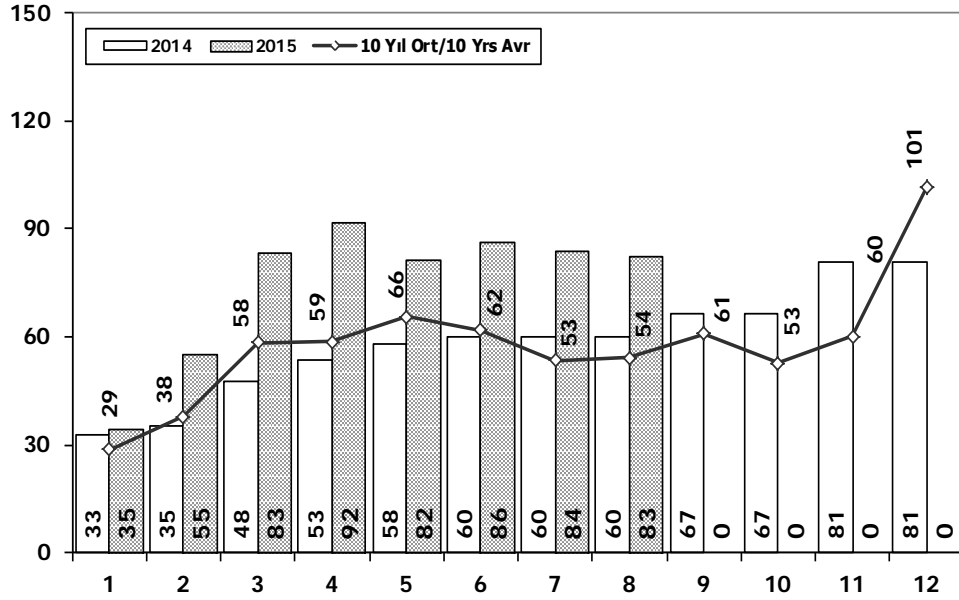


| Aylar / Months | 10 Yil Ort. 10 Yrs Avr. (x1000) | 2015 (x1000) | %           |
|----------------|---------------------------------|--------------|-------------|
| 1              | 11,8                            | 12,1         | 2,8         |
| 2              | 15,1                            | 17,7         | 17,2        |
| 3              | 22,0                            | 27,4         | 24,6        |
| 4              | 21,6                            | 25,2         | 16,6        |
| 5              | 23,3                            | 22,3         | -4,4        |
| 6              | 22,3                            | 22,7         | 1,9         |
| 7              | 19,4                            | 22,4         | 15,6        |
| 8              | 20,4                            | 23,1         | 13,1        |
| <b>Total</b>   | <b>155,9</b>                    | <b>172,9</b> | <b>10,9</b> |

|      | 1      | 2      | 3      | 4      | 5      | 6      | 7      | 8      | 9      | 10     | 11     | 12     | 8 Ay/Mo | Total   |
|------|--------|--------|--------|--------|--------|--------|--------|--------|--------|--------|--------|--------|---------|---------|
| 2005 | 11.092 | 17.279 | 26.373 | 24.667 | 32.903 | 23.479 | 24.878 | 29.999 | 30.170 | 25.831 | 27.878 | 45.391 | 190.670 | 319.940 |
| 2006 | 13.463 | 19.717 | 28.094 | 28.676 | 34.768 | 25.221 | 17.384 | 22.501 | 22.112 | 18.568 | 25.421 | 36.371 | 189.824 | 292.296 |
| 2007 | 11.764 | 14.490 | 21.152 | 20.429 | 22.188 | 21.535 | 21.871 | 25.702 | 22.416 | 23.489 | 27.374 | 44.331 | 159.131 | 276.741 |
| 2008 | 15.204 | 16.925 | 22.667 | 20.654 | 20.150 | 20.669 | 19.162 | 20.490 | 19.776 | 15.359 | 10.951 | 18.539 | 155.921 | 220.546 |
| 2009 | 7.458  | 8.354  | 15.909 | 18.224 | 20.699 | 22.083 | 13.609 | 14.555 | 31.241 | 8.289  | 11.421 | 34.208 | 120.891 | 206.050 |
| 2010 | 8.456  | 11.662 | 19.870 | 20.530 | 21.161 | 21.304 | 22.319 | 22.423 | 24.124 | 28.921 | 27.345 | 55.273 | 147.725 | 283.388 |
| 2011 | 17.790 | 23.344 | 29.310 | 28.236 | 28.791 | 29.149 | 21.846 | 22.503 | 23.679 | 25.132 | 22.244 | 45.324 | 200.969 | 317.348 |
| 2012 | 10.142 | 14.638 | 21.687 | 20.369 | 24.360 | 23.932 | 20.591 | 19.612 | 23.837 | 19.237 | 22.748 | 40.187 | 155.331 | 261.340 |
| 2013 | 11.305 | 14.117 | 20.903 | 20.016 | 23.038 | 19.481 | 19.014 | 15.772 | 18.112 | 13.414 | 18.900 | 34.397 | 143.646 | 228.469 |
| 2014 | 9.857  | 10.141 | 13.152 | 13.997 | 15.530 | 16.674 | 15.604 | 17.708 | 20.918 | 18.445 | 24.242 | 43.887 | 112.663 | 220.155 |
| 2015 | 12.081 | 17.715 | 27.445 | 25.220 | 22.266 | 22.696 | 22.404 | 23.122 | 0      | 0      | 0      | 0      | 172.949 | 172.949 |

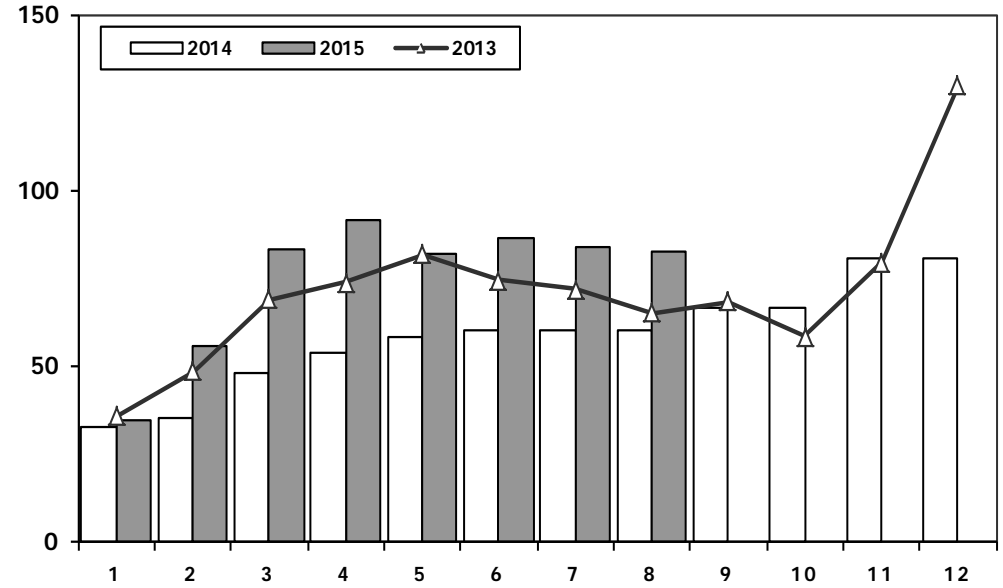
## Hafif Araç Pazarının Analizi (x1000)

### LV Market Analysis (x1000)



## Hafif Araç Pazarı (x1000)

### LV Total Market (Local + Imports) (x1000)



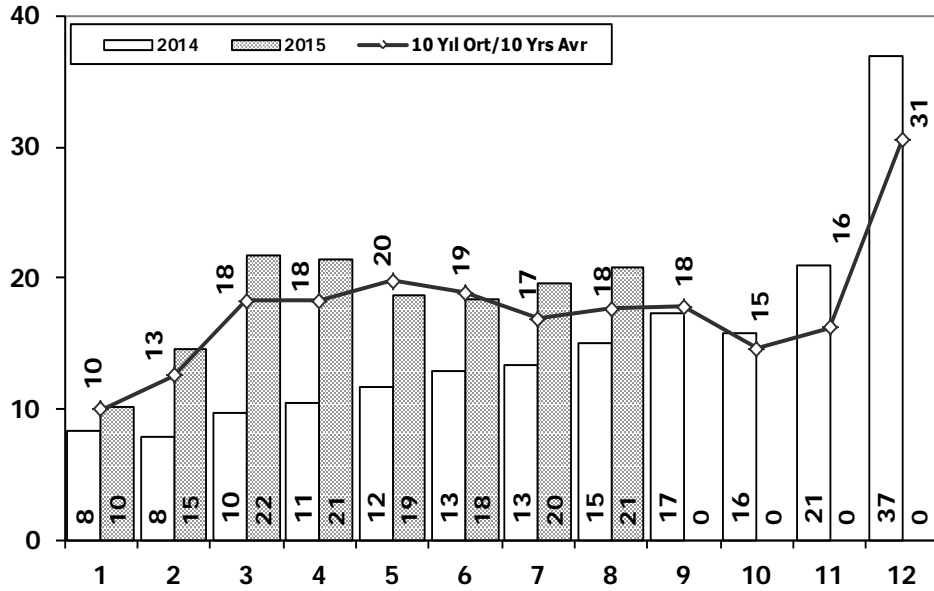
| Aylar / Months | 10 Yil Ort. 10 Yrs Avr. (x1000) | 2015 (x1000) | %           |
|----------------|---------------------------------|--------------|-------------|
| 1              | 28,6                            | 34,6         | 21,2        |
| 2              | 37,7                            | 55,3         | 46,6        |
| 3              | 58,3                            | 83,3         | 42,9        |
| 4              | 58,6                            | 91,6         | 56,3        |
| 5              | 65,6                            | 81,5         | 24,3        |
| 6              | 61,9                            | 86,2         | 39,2        |
| 7              | 53,5                            | 83,8         | 56,7        |
| 8              | 54,1                            | 82,6         | 52,6        |
| <b>Total</b>   | <b>418,3</b>                    | <b>599,0</b> | <b>43,2</b> |

|      | 1      | 2      | 3      | 4      | 5      | 6      | 7      | 8      | 9      | 10     | 11     | 12      | 8 Ay/Mo | Total   |
|------|--------|--------|--------|--------|--------|--------|--------|--------|--------|--------|--------|---------|---------|---------|
| 2005 | 20.747 | 35.766 | 60.707 | 56.844 | 67.357 | 60.796 | 61.015 | 64.011 | 61.954 | 56.638 | 61.364 | 103.209 | 427.243 | 710.408 |
| 2006 | 27.917 | 40.938 | 60.052 | 64.038 | 78.229 | 54.355 | 37.251 | 43.767 | 46.109 | 36.542 | 51.867 | 76.787  | 406.547 | 617.852 |
| 2007 | 23.117 | 29.184 | 41.890 | 42.366 | 47.938 | 48.674 | 47.490 | 50.558 | 46.581 | 52.725 | 63.313 | 100.926 | 331.217 | 594.762 |
| 2008 | 31.527 | 35.251 | 53.649 | 47.701 | 48.598 | 46.324 | 42.156 | 43.670 | 43.932 | 32.884 | 26.253 | 42.078  | 348.876 | 494.023 |
| 2009 | 19.606 | 21.742 | 55.111 | 52.640 | 63.191 | 61.067 | 28.845 | 35.609 | 81.397 | 21.033 | 27.962 | 88.923  | 337.811 | 557.126 |
| 2010 | 20.095 | 31.172 | 51.769 | 54.946 | 59.377 | 60.896 | 61.345 | 61.764 | 63.814 | 73.404 | 73.962 | 148.369 | 401.364 | 760.913 |
| 2011 | 44.892 | 58.663 | 78.403 | 77.695 | 80.646 | 81.573 | 63.044 | 58.406 | 60.129 | 69.421 | 63.657 | 127.910 | 543.322 | 864.439 |
| 2012 | 29.545 | 41.324 | 64.884 | 62.949 | 70.863 | 71.067 | 62.304 | 58.148 | 69.629 | 59.938 | 71.710 | 115.400 | 461.084 | 777.761 |
| 2013 | 35.523 | 48.307 | 68.774 | 73.575 | 81.468 | 74.096 | 71.596 | 65.043 | 67.963 | 58.014 | 79.301 | 129.718 | 518.382 | 853.378 |
| 2014 | 32.670 | 35.021 | 47.581 | 53.305 | 58.121 | 60.163 | 59.907 | 60.199 | 66.531 | 66.573 | 80.621 | 80.621  | 406.967 | 701.313 |
| 2015 | 34.615 | 55.331 | 83.302 | 91.602 | 81.542 | 86.158 | 83.836 | 82.577 | 0      | 0      | 0      | 0       | 598.963 | 598.963 |



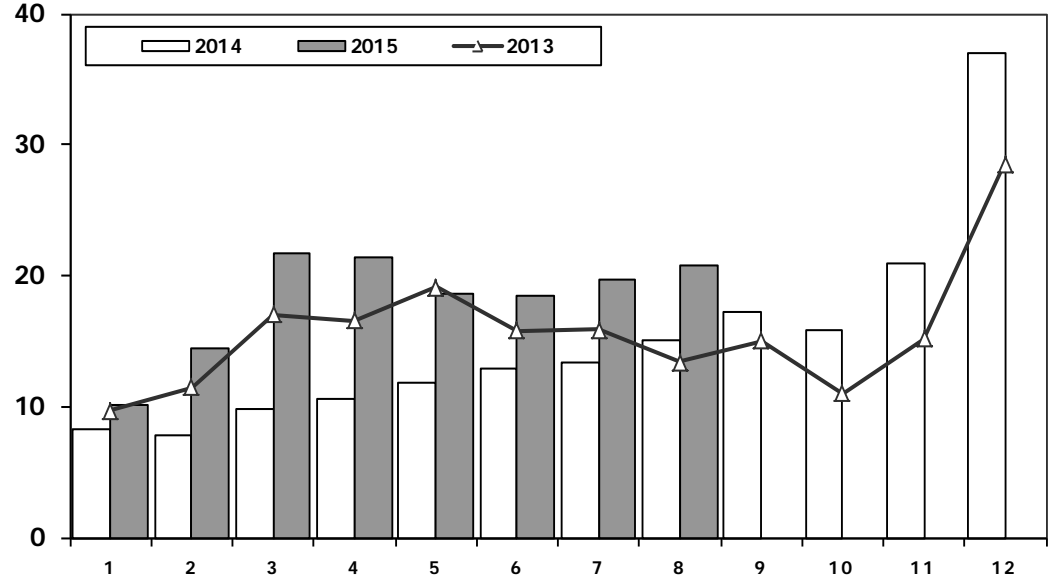
## Hafif Ticari Araç Pazarının Analizi (x1000)

LCV Market Analysis (x1000)



## Hafif Ticari Araç Pazarı (x1000)

LCV Total Market (Local + Imports) (x1000)

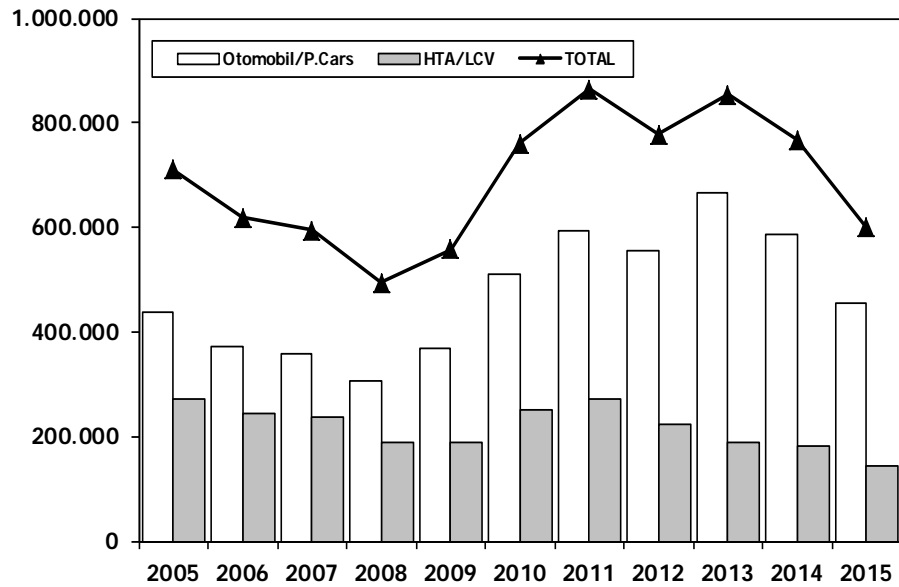


| Aylar / Months | 10 Yil Ort. 10 Yrs Avr. (x1000) | 2015 (x1000) | %          |
|----------------|---------------------------------|--------------|------------|
| 1              | 10,0                            | 10,1         | 1,4        |
| 2              | 12,5                            | 14,5         | 15,7       |
| 3              | 18,3                            | 21,6         | 18,3       |
| 4              | 18,3                            | 21,4         | 16,9       |
| 5              | 19,8                            | 18,7         | -5,7       |
| 6              | 18,9                            | 18,4         | -2,4       |
| 7              | 16,9                            | 19,6         | 16,3       |
| 8              | 17,7                            | 20,8         | 17,7       |
| <b>Total</b>   | <b>132,3</b>                    | <b>145,1</b> | <b>9,7</b> |

|      | 1      | 2      | 3      | 4      | 5      | 6      | 7      | 8      | 9      | 10     | 11     | 12     | 8 Ay/Mo | Total   |
|------|--------|--------|--------|--------|--------|--------|--------|--------|--------|--------|--------|--------|---------|---------|
| 2005 | 9.152  | 14.754 | 22.578 | 20.638 | 28.877 | 19.896 | 22.046 | 25.363 | 25.544 | 21.678 | 23.523 | 37.762 | 163.304 | 271.811 |
| 2006 | 11.411 | 16.009 | 23.056 | 23.861 | 29.708 | 21.373 | 14.598 | 18.894 | 18.592 | 15.305 | 21.390 | 30.436 | 158.910 | 244.633 |
| 2007 | 9.931  | 11.972 | 17.554 | 17.162 | 18.871 | 18.548 | 19.244 | 22.089 | 18.919 | 20.156 | 23.670 | 39.181 | 135.371 | 237.297 |
| 2008 | 12.939 | 14.055 | 19.502 | 17.388 | 17.121 | 17.600 | 16.626 | 17.568 | 16.879 | 13.096 | 9.052  | 16.199 | 132.799 | 188.025 |
| 2009 | 6.433  | 7.250  | 14.489 | 16.438 | 19.003 | 20.048 | 12.208 | 13.072 | 29.235 | 7.205  | 10.181 | 31.745 | 108.941 | 187.307 |
| 2010 | 7.501  | 10.521 | 17.811 | 18.397 | 18.910 | 18.810 | 19.946 | 19.542 | 21.337 | 25.545 | 23.901 | 48.908 | 131.438 | 251.129 |
| 2011 | 15.024 | 19.659 | 24.380 | 23.860 | 24.344 | 24.859 | 19.526 | 19.531 | 20.165 | 21.913 | 18.706 | 38.953 | 171.183 | 270.920 |
| 2012 | 8.468  | 12.135 | 17.614 | 17.304 | 20.403 | 20.218 | 17.773 | 16.912 | 20.269 | 16.498 | 19.413 | 34.474 | 130.827 | 221.481 |
| 2013 | 9.688  | 11.493 | 16.989 | 16.576 | 19.085 | 15.806 | 15.884 | 13.432 | 15.038 | 11.029 | 15.184 | 28.519 | 118.953 | 188.723 |
| 2014 | 8.302  | 7.854  | 9.769  | 10.536 | 11.742 | 12.885 | 13.305 | 15.068 | 17.269 | 15.759 | 20.926 | 36.935 | 89.461  | 180.350 |
| 2015 | 10.117 | 14.514 | 21.626 | 21.391 | 18.664 | 18.392 | 19.618 | 20.824 | 0      | 0      | 0      | 0      | 145.146 | 145.146 |

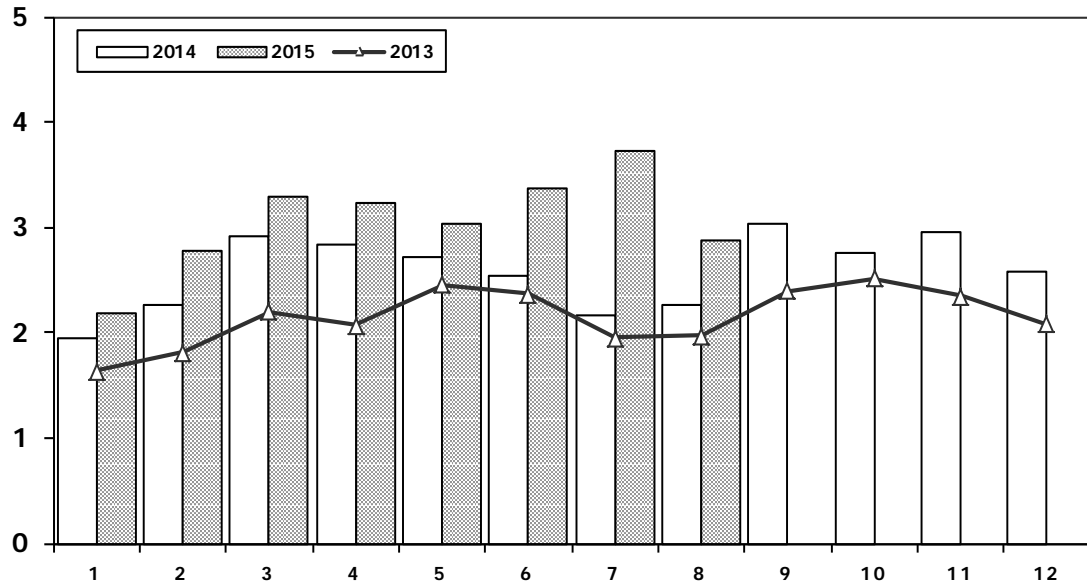
## Hafif Araç Pazarı (AYA < 3.5 Ton)

### Light Vehicle Market (GVW < 3.5 Ton)



## Traktör Pazarı (x1000)

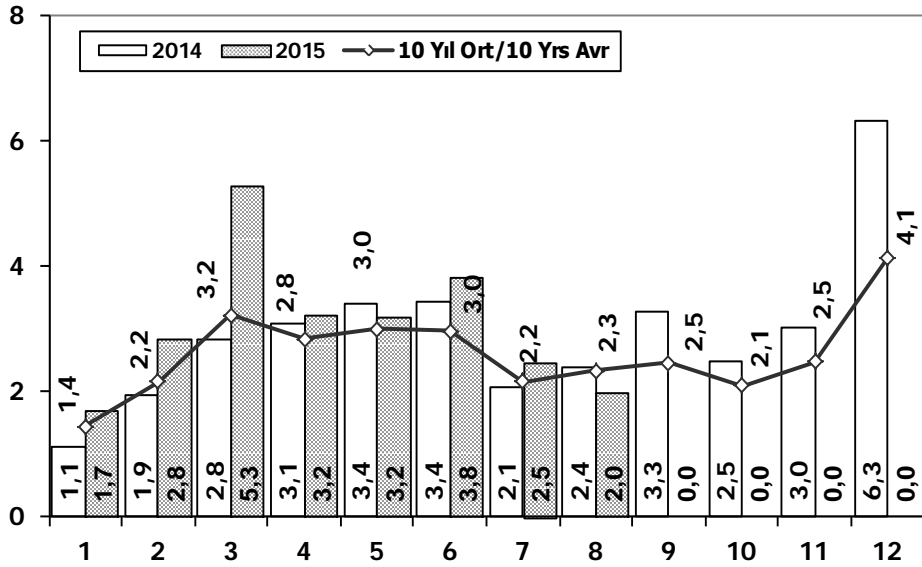
### F.Tractor Market (x1000)



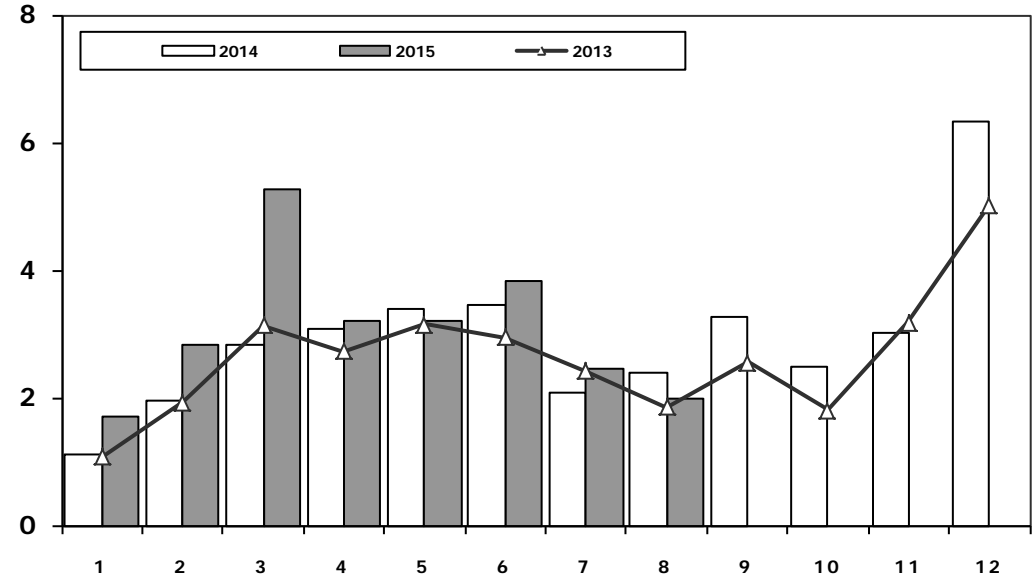
|                 | 2005    | 2006    | 2007    | 2008    | 2009    | 2010    | 2011    | 2012    | 2013    | 2014    | 2015    |
|-----------------|---------|---------|---------|---------|---------|---------|---------|---------|---------|---------|---------|
| Otomobil/P.Cars | 438.597 | 373.219 | 357.465 | 305.998 | 369.819 | 509.784 | 593.519 | 556.280 | 664.655 | 587.331 | 453.817 |
| HTA/LCV         | 271.811 | 244.633 | 237.297 | 188.025 | 187.307 | 251.129 | 270.920 | 221.481 | 188.723 | 180.350 | 145.146 |
| TOTAL           | 710.408 | 617.852 | 594.762 | 494.023 | 557.126 | 760.913 | 864.439 | 777.761 | 853.378 | 767.681 | 598.963 |
| HTA/LCV (%)     | 38      | 40      | 40      | 38      | 34      | 33      | 31      | 28      | 22      | 23      | 24      |

|      | 1     | 2     | 3     | 4     | 5     | 6     | 7     | 8     | 9     | 10    | 11    | 12    | 8 Ay/Mo | Total  |
|------|-------|-------|-------|-------|-------|-------|-------|-------|-------|-------|-------|-------|---------|--------|
| 2005 | 1.026 | 1.636 | 2.001 | 2.599 | 2.569 | 2.780 | 2.148 | 2.819 | 2.567 | 2.477 | 2.297 | 2.089 | 17.578  | 27.008 |
| 2006 | 1.578 | 2.493 | 2.746 | 2.841 | 3.561 | 2.356 | 1.685 | 2.177 | 2.756 | 1.915 | 2.353 | 1.925 | 19.437  | 28.386 |
| 2007 | 1.812 | 1.778 | 2.063 | 2.107 | 2.266 | 1.853 | 1.653 | 2.065 | 2.372 | 2.239 | 2.231 | 1.602 | 15.597  | 24.041 |
| 2008 | 1.510 | 1.427 | 1.933 | 1.692 | 1.689 | 1.592 | 1.275 | 924   | 904   | 609   | 707   | 359   | 12.042  | 14.621 |
| 2009 | 267   | 344   | 388   | 638   | 759   | 828   | 741   | 534   | 586   | 765   | 725   | 715   | 4.499   | 7.290  |
| 2010 | 714   | 903   | 1.432 | 1.653 | 1.736 | 1.673 | 1.613 | 1.527 | 2.351 | 2.787 | 2.656 | 2.345 | 11.251  | 21.390 |
| 2011 | 2.458 | 2.610 | 3.105 | 3.403 | 3.847 | 3.599 | 2.952 | 1.559 | 2.957 | 2.823 | 2.603 | 2.807 | 23.533  | 34.723 |
| 2012 | 2.216 | 2.632 | 3.223 | 3.259 | 3.067 | 2.821 | 2.037 | 1.262 | 1.648 | 1.858 | 1.921 | 1.579 | 20.517  | 27.523 |
| 2013 | 1.633 | 1.817 | 2.196 | 2.070 | 2.455 | 2.370 | 1.955 | 1.969 | 2.396 | 2.510 | 2.343 | 2.080 | 16.465  | 25.794 |
| 2014 | 1.941 | 2.256 | 2.915 | 2.837 | 2.723 | 2.534 | 2.171 | 2.265 | 3.039 | 2.755 | 2.964 | 2.573 | 19.642  | 30.973 |
| 2015 | 2.187 | 2.767 | 3.297 | 3.235 | 3.039 | 3.366 | 3.730 | 2.883 | 0     | 0     | 0     | 0     | 24.504  | 24.504 |

## Kamyon Pazarının Analizi (x1000) AYA > 5 Ton Truck Market Analysis (x1000) GVW > 5 Ton



## Kamyon Pazarı (x1000) AYA > 5 Ton Truck Market (x1000) GVW > 5 Ton

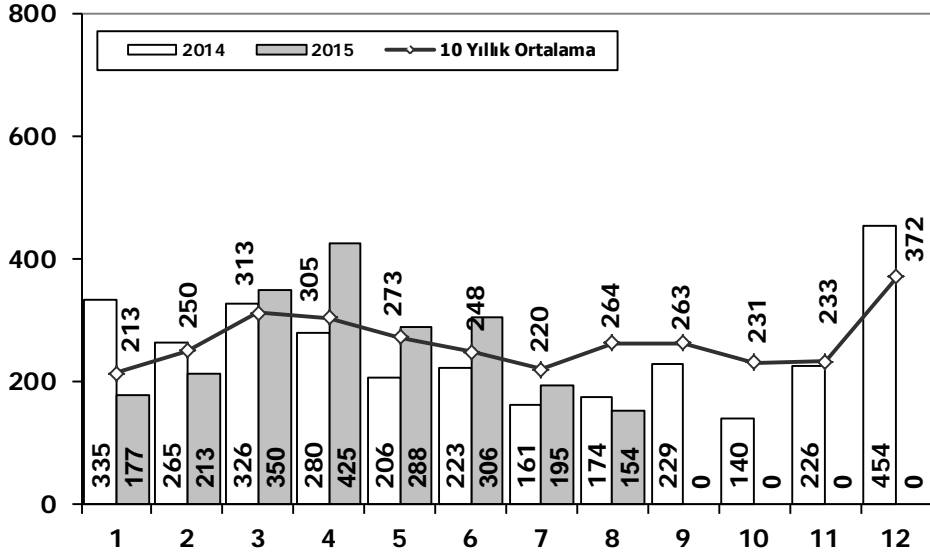


| Aylar / Months | 10 Yil Ort. 10 Yrs Avr. (x1000) | 2015 (x100) | %           |
|----------------|---------------------------------|-------------|-------------|
| 1              | 1,4                             | 1,7         | 17,8        |
| 2              | 2,2                             | 2,8         | 31,7        |
| 3              | 3,2                             | 5,3         | 63,7        |
| 4              | 2,8                             | 3,2         | 13,3        |
| 5              | 3,0                             | 3,2         | 6,5         |
| 6              | 3,0                             | 3,8         | 29,1        |
| 7              | 2,2                             | 2,5         | 14,1        |
| 8              | 2,3                             | 2,0         | -14,6       |
| <b>Total</b>   | <b>20,1</b>                     | <b>24,5</b> | <b>21,8</b> |

|      | 1     | 2     | 3     | 4     | 5     | 6     | 7     | 8     | 9     | 10    | 11    | 12    | 8 Ay/Mo | Total  |
|------|-------|-------|-------|-------|-------|-------|-------|-------|-------|-------|-------|-------|---------|--------|
| 2005 | 1.693 | 2.186 | 3.288 | 3.484 | 3.413 | 3.147 | 2.504 | 4.028 | 4.043 | 3.708 | 3.918 | 6.570 | 23.743  | 41.982 |
| 2006 | 1.767 | 3.310 | 4.467 | 4.180 | 4.449 | 3.398 | 2.472 | 3.142 | 3.052 | 2.926 | 3.550 | 5.358 | 27.185  | 42.071 |
| 2007 | 1.554 | 2.055 | 3.065 | 2.940 | 2.865 | 2.613 | 2.372 | 3.145 | 2.988 | 2.886 | 3.258 | 4.444 | 20.609  | 34.185 |
| 2008 | 1.797 | 2.309 | 2.621 | 2.578 | 2.459 | 2.526 | 2.067 | 2.377 | 2.390 | 1.790 | 1.512 | 1.834 | 18.734  | 26.260 |
| 2009 | 771   | 759   | 1.034 | 1.342 | 1.355 | 1.651 | 1.156 | 1.205 | 1.780 | 866   | 981   | 2.015 | 9.273   | 14.915 |
| 2010 | 777   | 968   | 1.772 | 1.807 | 1.966 | 2.205 | 2.093 | 2.446 | 2.444 | 3.071 | 3.136 | 5.677 | 14.034  | 28.362 |
| 2011 | 2.552 | 3.292 | 4.418 | 3.754 | 3.803 | 3.749 | 1.996 | 2.478 | 3.081 | 2.774 | 3.108 | 5.787 | 26.042  | 40.792 |
| 2012 | 1.375 | 2.159 | 3.595 | 2.697 | 3.321 | 3.250 | 2.450 | 2.277 | 2.991 | 2.244 | 3.006 | 5.000 | 21.124  | 34.365 |
| 2013 | 1.077 | 1.931 | 3.127 | 2.720 | 3.145 | 2.951 | 2.411 | 1.845 | 2.554 | 1.801 | 3.173 | 5.025 | 19.207  | 31.760 |
| 2014 | 1.117 | 1.949 | 2.818 | 3.092 | 3.405 | 3.438 | 2.083 | 2.390 | 3.281 | 2.494 | 3.028 | 6.313 | 20.292  | 35.408 |
| 2015 | 1.708 | 2.840 | 5.270 | 3.208 | 3.189 | 3.823 | 2.460 | 1.990 | 0     | 0     | 0     | 0     | 24.488  | 24.488 |

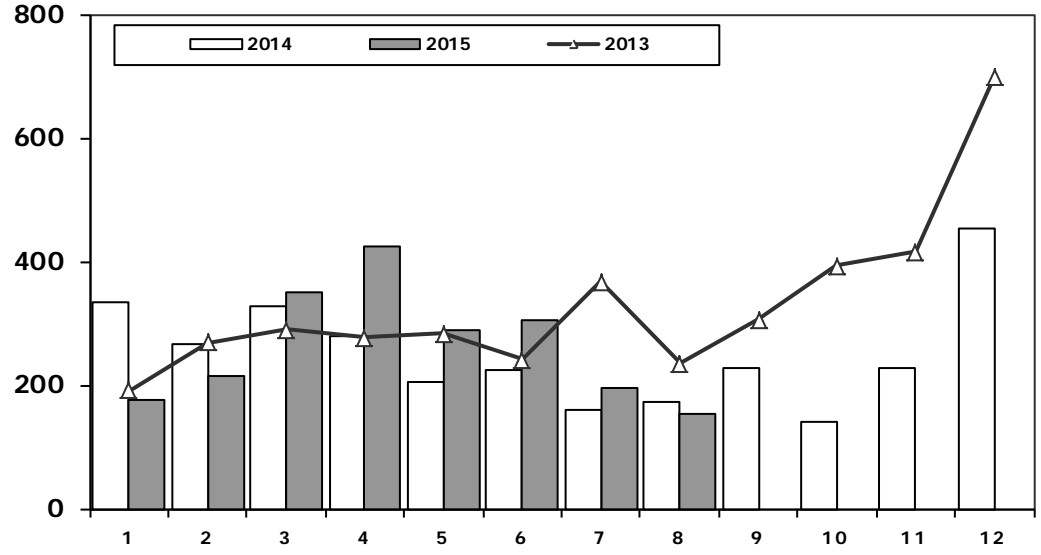
## Midibüs Pazarının Analizi (7-9 mt / 25-35 Kişilik)

Midibus Market Analysis (7-9 mt / 25-35 Passengers)



## Midibüs Pazarı (7-9 mt / 25-35 Kişilik Midibüs)

Midibus Market (7-9 mt / 25-35 Passengers)

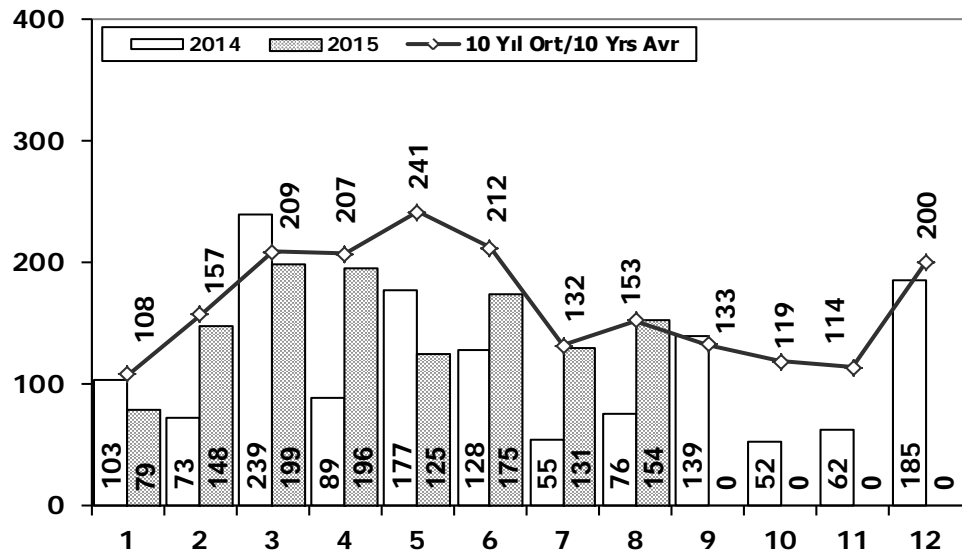


| Aylar / Months | 10 Yıl Ort. 10 Yrs Avr. | 2015         | %        |
|----------------|-------------------------|--------------|----------|
| 1              | 213                     | 177          | -17      |
| 2              | 250                     | 213          | -15      |
| 3              | 313                     | 350          | 12       |
| 4              | 305                     | 425          | 39       |
| 5              | 273                     | 288          | 5        |
| 6              | 248                     | 306          | 23       |
| 7              | 220                     | 195          | -11      |
| 8              | 264                     | 154          | -42      |
| <b>Total</b>   | <b>2.086</b>            | <b>2.108</b> | <b>1</b> |

|      | 1   | 2   | 3   | 4   | 5   | 6   | 7   | 8   | 9   | 10  | 11  | 12  | 8 Ay/Mo | Total |
|------|-----|-----|-----|-----|-----|-----|-----|-----|-----|-----|-----|-----|---------|-------|
| 2005 | 182 | 258 | 432 | 393 | 439 | 269 | 252 | 459 | 436 | 329 | 328 | 574 | 2.684   | 4.351 |
| 2006 | 207 | 297 | 406 | 388 | 381 | 266 | 230 | 353 | 322 | 253 | 305 | 401 | 2.528   | 3.809 |
| 2007 | 207 | 272 | 404 | 238 | 302 | 283 | 164 | 365 | 399 | 279 | 283 | 465 | 2.235   | 3.661 |
| 2008 | 391 | 476 | 436 | 512 | 419 | 331 | 368 | 380 | 341 | 352 | 246 | 270 | 3.313   | 4.522 |
| 2009 | 154 | 124 | 160 | 220 | 174 | 198 | 160 | 175 | 168 | 143 | 206 | 323 | 1.365   | 2.205 |
| 2010 | 155 | 131 | 185 | 167 | 140 | 138 | 129 | 246 | 236 | 206 | 202 | 437 | 1.291   | 2.372 |
| 2011 | 138 | 195 | 294 | 316 | 280 | 258 | 211 | 305 | 301 | 276 | 260 | 270 | 1.997   | 3.104 |
| 2012 | 179 | 257 | 277 | 229 | 257 | 239 | 216 | 249 | 325 | 269 | 189 | 398 | 1.903   | 3.084 |
| 2013 | 191 | 268 | 289 | 276 | 283 | 241 | 367 | 235 | 305 | 392 | 415 | 697 | 2.150   | 3.959 |
| 2014 | 335 | 265 | 326 | 280 | 206 | 223 | 161 | 174 | 229 | 140 | 226 | 454 | 1.970   | 3.019 |
| 2015 | 177 | 213 | 350 | 425 | 288 | 306 | 195 | 154 | 0   | 0   | 0   | 0   | 2.108   | 2.108 |

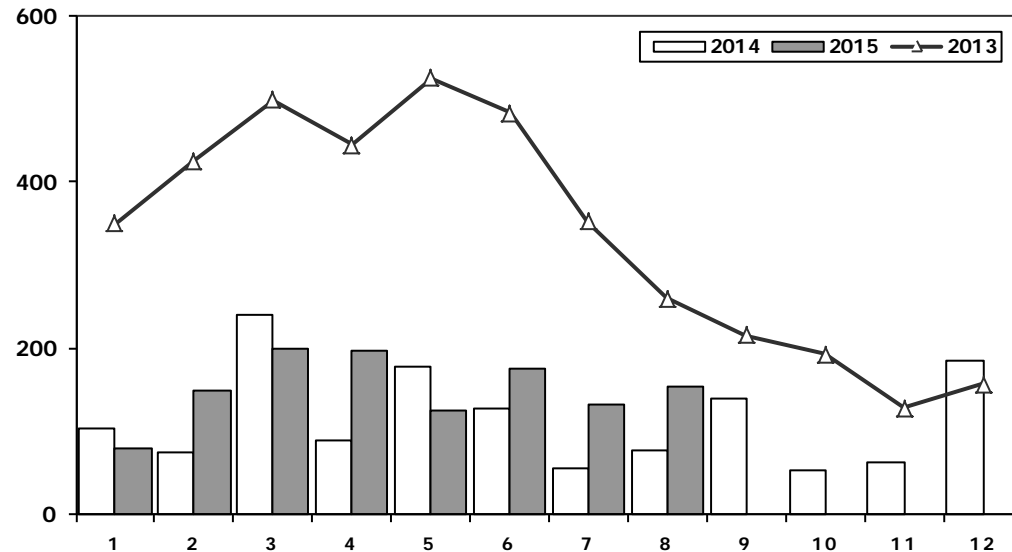
## Otobüs Pazarının Analizi

Bus Market Analysis



## Otobüs Pazarı

Bus Market

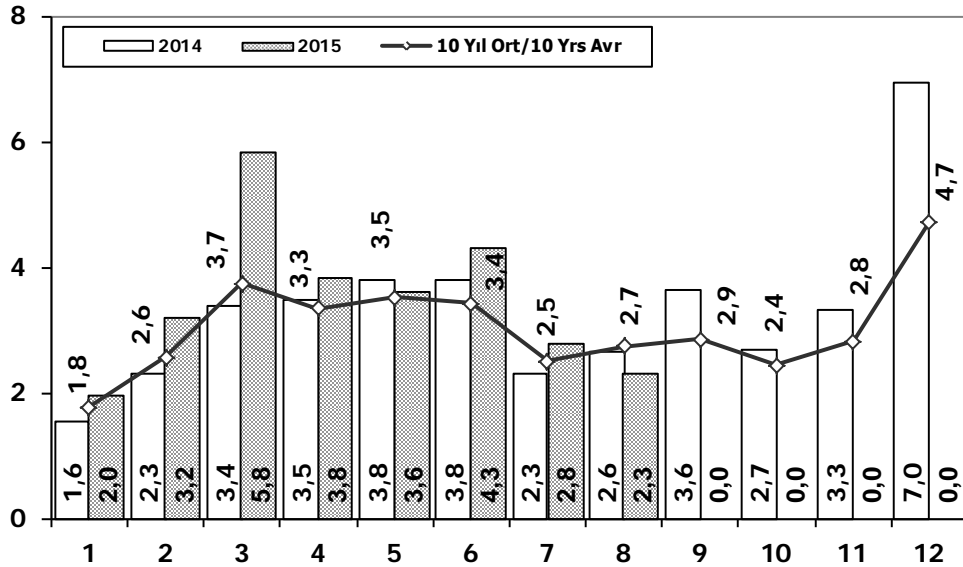


| Aylar / Months | 10 Yıl Ort. 10 Yrs Avr. | 2015         | %          |
|----------------|-------------------------|--------------|------------|
| 1              | 108                     | 79           | -27        |
| 2              | 157                     | 148          | -6         |
| 3              | 209                     | 199          | -5         |
| 4              | 207                     | 196          | -5         |
| 5              | 241                     | 125          | -48        |
| 6              | 212                     | 175          | -17        |
| 7              | 132                     | 131          | 0          |
| 8              | 153                     | 154          | 1          |
| <b>Total</b>   | <b>1.417</b>            | <b>1.207</b> | <b>-15</b> |

|      | 1   | 2   | 3   | 4   | 5   | 6   | 7   | 8   | 9   | 10  | 11  | 12  | 8 Ay/Mo | Total |
|------|-----|-----|-----|-----|-----|-----|-----|-----|-----|-----|-----|-----|---------|-------|
| 2005 | 65  | 81  | 75  | 152 | 174 | 167 | 76  | 149 | 147 | 116 | 109 | 485 | 939     | 1.796 |
| 2006 | 78  | 101 | 165 | 247 | 230 | 184 | 84  | 112 | 146 | 84  | 176 | 176 | 1.201   | 1.783 |
| 2007 | 72  | 191 | 129 | 89  | 150 | 91  | 91  | 103 | 110 | 168 | 163 | 241 | 916     | 1.598 |
| 2008 | 77  | 85  | 108 | 176 | 151 | 212 | 101 | 165 | 166 | 121 | 141 | 236 | 1.075   | 1.739 |
| 2009 | 100 | 221 | 226 | 224 | 167 | 186 | 85  | 103 | 58  | 75  | 53  | 125 | 1.312   | 1.623 |
| 2010 | 23  | 42  | 102 | 159 | 145 | 151 | 151 | 189 | 107 | 99  | 106 | 251 | 962     | 1.525 |
| 2011 | 76  | 198 | 218 | 306 | 364 | 283 | 113 | 189 | 132 | 169 | 170 | 314 | 1.747   | 2.532 |
| 2012 | 120 | 87  | 201 | 139 | 379 | 225 | 152 | 174 | 252 | 226 | 140 | 315 | 1.477   | 2.410 |
| 2013 | 349 | 425 | 498 | 444 | 525 | 483 | 352 | 260 | 215 | 192 | 128 | 156 | 3.336   | 4.027 |
| 2014 | 103 | 73  | 239 | 89  | 177 | 128 | 55  | 76  | 139 | 52  | 62  | 185 | 940     | 1.378 |
| 2015 | 79  | 148 | 199 | 196 | 125 | 175 | 131 | 154 | 0   | 0   | 0   | 0   | 1.207   | 1.207 |

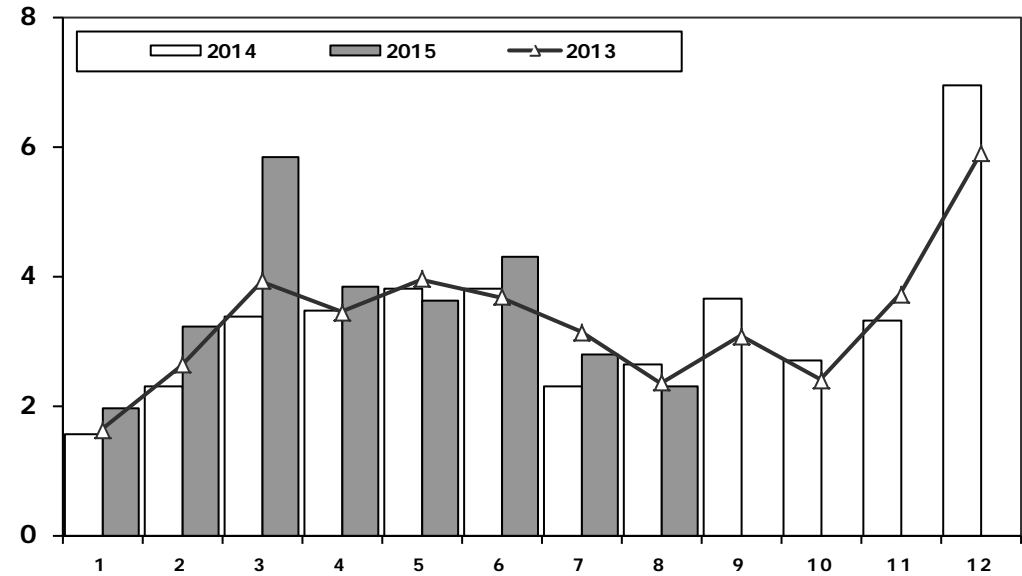
## Ağır Ticari Araç Pazarının Analizi (x1000)

HCV Market Analysis (x1000)



## Ağır Ticari Araç Pazarı (x1000)

HCV Market (x1000)

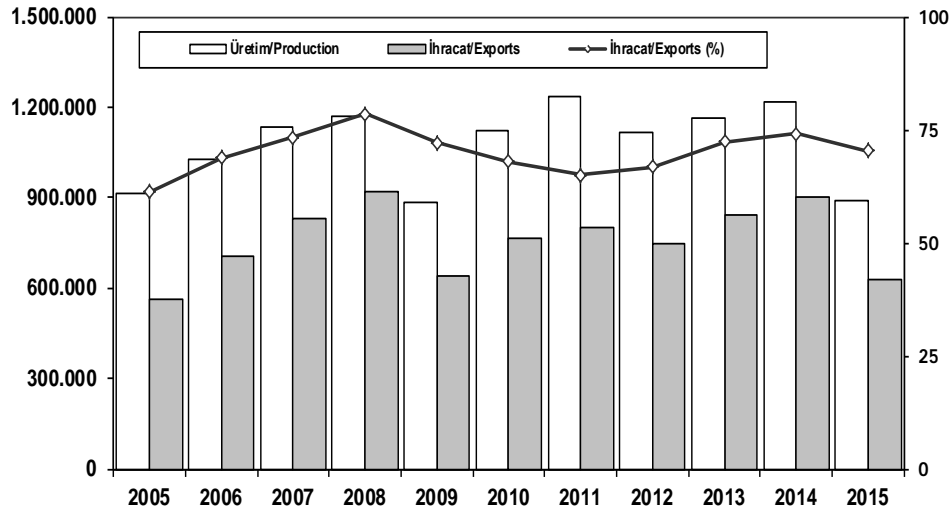


| Aylar / Months | 10 Yıl Ort. 10 Yrs Avr. (x1000) | 2015 (x1000) | %           |
|----------------|---------------------------------|--------------|-------------|
| 1              | 1,8                             | 2,0          | 10,9        |
| 2              | 2,6                             | 3,2          | 24,8        |
| 3              | 3,7                             | 5,8          | 55,6        |
| 4              | 3,3                             | 3,8          | 14,5        |
| 5              | 3,5                             | 3,6          | 2,6         |
| 6              | 3,4                             | 4,3          | 25,8        |
| 7              | 2,5                             | 2,8          | 11,1        |
| 8              | 2,7                             | 2,3          | -16,3       |
| <b>Total</b>   | <b>23,6</b>                     | <b>27,8</b>  | <b>17,8</b> |

|      | 1     | 2     | 3     | 4     | 5     | 6     | 7     | 8     | 9     | 10    | 11    | 12    | 8 Ay/Mo | Total  |
|------|-------|-------|-------|-------|-------|-------|-------|-------|-------|-------|-------|-------|---------|--------|
| 2005 | 1.940 | 2.525 | 3.795 | 4.029 | 4.026 | 3.583 | 2.832 | 4.636 | 4.626 | 4.153 | 4.355 | 7.629 | 27.366  | 48.129 |
| 2006 | 2.052 | 3.708 | 5.038 | 4.815 | 5.060 | 3.848 | 2.786 | 3.607 | 3.520 | 3.263 | 4.031 | 5.935 | 30.914  | 47.663 |
| 2007 | 1.833 | 2.518 | 3.598 | 3.267 | 3.317 | 2.987 | 2.627 | 3.613 | 3.497 | 3.333 | 3.704 | 5.150 | 23.760  | 39.444 |
| 2008 | 2.265 | 2.870 | 3.165 | 3.266 | 3.029 | 3.069 | 2.536 | 2.922 | 2.897 | 2.263 | 1.899 | 2.340 | 23.122  | 32.521 |
| 2009 | 1.025 | 1.104 | 1.420 | 1.786 | 1.696 | 2.035 | 1.401 | 1.483 | 2.006 | 1.084 | 1.240 | 2.463 | 11.950  | 18.743 |
| 2010 | 955   | 1.141 | 2.059 | 2.133 | 2.251 | 2.494 | 2.373 | 2.881 | 2.787 | 3.376 | 3.444 | 6.365 | 16.287  | 32.259 |
| 2011 | 2.766 | 3.685 | 4.930 | 4.376 | 4.447 | 4.290 | 2.320 | 2.972 | 3.514 | 3.219 | 3.538 | 6.371 | 29.786  | 46.428 |
| 2012 | 1.674 | 2.503 | 4.073 | 3.065 | 3.957 | 3.714 | 2.818 | 2.700 | 3.568 | 2.739 | 3.335 | 5.713 | 24.504  | 39.859 |
| 2013 | 1.617 | 2.624 | 3.914 | 3.440 | 3.953 | 3.675 | 3.130 | 2.340 | 3.074 | 2.385 | 3.716 | 5.878 | 24.693  | 39.746 |
| 2014 | 1.555 | 2.287 | 3.383 | 3.461 | 3.788 | 3.789 | 2.299 | 2.640 | 3.649 | 2.686 | 3.316 | 6.952 | 23.202  | 39.805 |
| 2015 | 1.964 | 3.201 | 5.819 | 3.829 | 3.602 | 4.304 | 2.786 | 2.298 | 0     | 0     | 0     | 0     | 27.803  | 27.803 |

## İhracat/Üretim (2005-2015)

Exports/Production (2005-2015)



|                     | 2005    | 2006      | 2007      | 2008      | 2009    | 2010      | 2011      | 2012      | 2013      | 2014      | 2015    |
|---------------------|---------|-----------|-----------|-----------|---------|-----------|-----------|-----------|-----------|-----------|---------|
| Üretim/Production   | 916.062 | 1.026.427 | 1.132.951 | 1.171.917 | 884.466 | 1.124.982 | 1.234.637 | 1.115.233 | 1.166.043 | 1.218.848 | 891.558 |
| İhracat/Exports     | 561.078 | 706.402   | 829.879   | 920.763   | 637.855 | 763.670   | 801.112   | 745.354   | 843.467   | 902.194   | 626.462 |
| İhracat/Exports (%) | 61      | 69        | 73        | 79        | 72      | 68        | 65        | 67        | 72        | 74        | 70      |

## Taşıt Araçları İhracatı (2013-2015)

Motor Vehicle Exports (2013-2015)

| SEKTÖR/SECTOR                   | 2013           | 2014           | 2014 / 2015    |                | 2014/2015 (%) |
|---------------------------------|----------------|----------------|----------------|----------------|---------------|
|                                 |                |                | 8 Ay - 8 Mo    |                |               |
| OTOMOBİL/ P.Cars                | 484.504        | 581.993        | 379.093        | 376.970        | -1            |
| TİCARİ ARAÇLAR / CV             | 343.967        | 303.187        | 190.880        | 239.956        | 26            |
| * Kamyonet/Pick-Up              | 300.765        | 269.995        | 171.731        | 205.229        | 20            |
| * Minibüs/Minibus               | 34.664         | 26.458         | 14.967         | 30.137         | 101           |
| * Kamyon/Truck                  | 3.055          | 1.281          | 755            | 772            | 2             |
| * Midibüs/Midibus               | 985            | 824            | 557            | 248            | -55           |
| * Otobüs/Bus                    | 4.498          | 4.629          | 2.870          | 3.570          | 24            |
| <b>TAŞIT ARAÇLARI /MV TOTAL</b> | <b>828.471</b> | <b>885.180</b> | <b>569.973</b> | <b>616.926</b> | <b>8</b>      |
| TRAKTÖR/F.TRACTOR               | 14.996         | 17.014         | 11.087         | 9.536          | -14           |
| <b>TOTAL</b>                    | <b>843.467</b> | <b>902.194</b> | <b>581.060</b> | <b>626.462</b> | <b>8</b>      |

## Otomotiv Ana ve Yan Sanayii İhracatı (ABD \$)

CBU and CKD Exports - \$

| SEKTÖR/SECTOR                                     | 2012 Toplam (Total)   | 2013 Toplam (Total)   | 2014 Toplam (Total)   | 2014 / 2015           |                       | 2015/2014 (%) |
|---|-----------------------|-----------------------|-----------------------|-----------------------|-----------------------|---------------|
|   |                       |                       |                       | 8 Ay (8 Months)       |                       |               |
| <b>Toplam Yan Sanayi/Total Component Industry</b> | <b>8.215.954.295</b>  | <b>9.065.017.539</b>  | <b>9.508.032.776</b>  | <b>6.468.459.158</b>  | <b>5.698.825.766</b>  | <b>-12</b>    |
| İç ve Dış Lastik / Tyres                          | 1.199.572.093         | 1.130.005.892         | 1.126.947.745         | 805.801.627           | 654.215.257           | -19           |
| Emniyet Camı / Safety Glasses                     | 120.641.763           | 135.230.310           | 143.231.168           | 98.186.550            | 82.100.954            | -16           |
| Motor (Engine)                                    | 272.085.582           | 319.294.885           | 171.893.752           | 116.262.647           | 114.723.818           | -1            |
| Akümülatör / Batteries                            | 250.104.807           | 306.451.449           | 289.150.764           | 174.980.171           | 135.502.412           | -23           |
| Diğer Aksam ve Parça / Spare Parts&Components     | 6.373.550.048         | 7.174.035.002         | 7.776.809.346         | 5.273.228.162         | 4.712.283.325         | -11           |
| <b>Toplam Ana Sanayi/Total Vehicle Industry</b>   | <b>11.100.457.162</b> | <b>12.491.591.365</b> | <b>13.272.198.027</b> | <b>8.811.980.374</b>  | <b>8.096.472.589</b>  | <b>-8</b>     |
| Otobüs / Bus                                      | 855.424.304           | 937.790.963           | 985.983.007           | 639.286.970           | 634.091.030           | -1            |
| Midibüs-Minibüs / Minibus- Minibus                | 161.806.275           | 147.769.644           | 97.685.509            | 48.844.910            | 89.574.493            | 83            |
| Otomobil (P. Cars)                                | 6.068.045.119         | 6.855.475.590         | 7.270.836.596         | 4.892.432.048         | 4.409.711.364         | -10           |
| Kamyon-Kamyonet/HCV-LCV                           | 3.433.310.999         | 3.918.798.755         | 4.201.921.030         | 2.771.145.087         | 2.553.294.651         | -8            |
| Çekici/Truck-Tractor                              | 71.336.635            | 218.385.732           | 252.416.256           | 157.902.708           | 152.855.022           | -3            |
| Römork ve Yan Römork/Trailer-Semi Trailer         | 195.093.537           | 77.907.407            | 38.396.523            | 29.086.148            | 30.765.119            | 6             |
| Tarım Traktörü/Farm Tractor                       | 315.440.294           | 335.463.275           | 424.959.105           | 273.282.503           | 226.180.910           | -17           |
| <b>Toplam/Total</b>                               | <b>19.316.411.457</b> | <b>21.556.608.904</b> | <b>22.780.230.802</b> | <b>15.280.439.532</b> | <b>13.795.298.355</b> | <b>-10</b>    |

Kaynak: Otomotiv Endüstrisi İhracatçıları Birliği

**Firma Bazında İhracat (Adet)**  
Export Of member Companies (Unit)

| FİRMALAR<br>Companies | 2013           | 2014           | Ocak-Ağustos<br>8 Months |                |
|-----------------------|----------------|----------------|--------------------------|----------------|
|                       |                |                | 2014                     | 2015           |
| OYAK RENAULT          | 266.508        | 257.992        | 162.685                  | 166.178        |
| FORD OTOSAN           | 208.722        | 187.921        | 117.338                  | 154.542        |
| HYUNDAI ASSAN         | 85.500         | 179.793        | 115.040                  | 127.333        |
| TOFAŞ                 | 160.309        | 142.234        | 92.000                   | 109.720        |
| TOYOTA                | 86.908         | 109.517        | 77.966                   | 51.509         |
| TÜRK TRAKTÖR          | 14.402         | 15.866         | 10.295                   | 9.073          |
| M. BENZ TÜRK          | 5.331          | 3.438          | 2.174                    | 2.715          |
| HONDA TÜRKİYE         | 2.121          | 1.560          | 1.171                    | 1.622          |
| KARSAN                | 10.120         | 37             | 24                       | 1.554          |
| MAN TÜRKİYE           | 898            | 937            | 603                      | 998            |
| HATTAT TARIM          | 594            | 1.148          | 792                      | 463            |
| OTOKAR                | 620            | 580            | 293                      | 438            |
| TEMSA GLOBAL          | 663            | 423            | 205                      | 184            |
| A.I.O.S.              | 770            | 748            | 474                      | 133            |
| BMC                   | 1              | 0              | 0                        | 0              |
| <b>GENEL TOPLAM</b>   | <b>843.467</b> | <b>902.194</b> | <b>581.060</b>           | <b>626.462</b> |

Kaynak: OSD

**Sektör Bazında İhracat (\$)**  
Exports on Sectorial Basis

| SEKTÖRLER                                 | AĞUSTOS           |                   |                      |                | OCAK-AĞUSTOS       |                   |                      |                |
|---|-------------------|-------------------|----------------------|----------------|--------------------|-------------------|----------------------|----------------|
|   | 2014              | 2015              | Değişim<br>('15/'14) | Pay(15)<br>(%) | 2014               | 2015              | Değişim<br>('15/'14) | Pay(15)<br>(%) |
| Otomotiv Endüstrisi                       | 1.266.765         | 1.363.694         | 8                    | 13             | 14.956.907         | 13.496.794        | -10                  | 14             |
| Hazırgiyim ve Konfeksiyon                 | 1.552.560         | 1.547.076         | 0                    | 15             | 12.695.442         | 11.199.275        | -12                  | 12             |
| Kimyevi Maddeler ve Mamulleri             | 1.427.809         | 1.192.968         | -16                  | 11             | 11.881.105         | 10.469.726        | -12                  | 11             |
| Çelik                                     | 955.673           | 799.239           | -16                  | 8              | 9.003.394          | 6.942.082         | -23                  | 7              |
| Elektrik Elektronik ve Hizmet             | 852.235           | 835.755           | -2                   | 8              | 7.828.964          | 6.730.853         | -14                  | 7              |
| Tekstil ve Hammaddeleri                   | 681.659           | 640.572           | -6                   | 6              | 5.903.367          | 5.266.402         | -11                  | 6              |
| Demir ve Demir Dışı Metaller              | 540.785           | 516.022           | -5                   | 5              | 4.777.287          | 4.173.352         | -13                  | 4              |
| Hububat, Bakliyat, Yağlı Tohumlar ve Mam. | 483.637           | 460.562           | -5                   | 4              | 4.346.420          | 3.953.644         | -9                   | 4              |
| Makine ve Aksamları                       | 456.751           | 435.787           | -5                   | 4              | 3.992.702          | 3.642.923         | -9                   | 4              |
| Mobilya, Kağıt ve Orman Ürünleri          | 345.849           | 346.773           | 0                    | 3              | 2.990.729          | 2.709.615         | -9                   | 3              |
| Madencilik Ürünleri                       | 381.295           | 343.790           | -10                  | 3              | 3.158.448          | 2.698.853         | -15                  | 3              |
| İklimlendirme Sanayii                     | 328.197           | 286.294           | -13                  | 3              | 2.983.502          | 2.418.952         | -19                  | 3              |
| Çimento Cam Seramik ve Toprak Ürünleri    | 245.296           | 222.234           | -9                   | 2              | 2.147.103          | 1.869.662         | -13                  | 2              |
| Mücevher                                  | 196.394           | 246.726           | 26                   | 2              | 1.464.711          | 1.816.128         | 24                   | 2              |
| Fındık ve Mamulleri                       | 143.214           | 153.950           | 7                    | 1              | 1.220.367          | 1.734.754         | 42                   | 2              |
| Halı                                      | 159.444           | 169.066           | 6                    | 2              | 1.485.653          | 1.314.390         | -12                  | 1              |
| Su Ürünleri ve Hayvansal Mamuller         | 185.391           | 142.637           | -23                  | 1              | 1.498.482          | 1.212.972         | -19                  | 1              |
| Yaş Meyve ve Sebze                        | 104.381           | 73.439            | -30                  | 1              | 1.344.365          | 1.161.510         | -14                  | 1              |
| Deri ve Deri Mamulleri                    | 160.337           | 134.918           | -16                  | 1              | 1.211.891          | 1.005.833         | -17                  | 1              |
| Savunma ve Havacılık Sanayii              | 98.980            | 142.957           | 44                   | 1              | 1.051.199          | 971.524           | -8                   | 1              |
| Meyve Sebze Mamulleri                     | 119.252           | 110.252           | -8                   | 1              | 908.114            | 829.278           | -9                   | 1              |
| Kuru Meyve ve Mamulleri                   | 94.078            | 89.815            | -5                   | 1              | 837.126            | 746.737           | -11                  | 1              |
| Gemi ve Yat                               | 109.595           | 123.179           | 12                   | 1              | 794.766            | 715.245           | -10                  | 1              |
| Tütün ve Mamulleri                        | 111.508           | 81.941            | -27                  | 1              | 707.771            | 613.673           | -13                  | 1              |
| Zeytin ve Zeytinyağı                      | 13.367            | 10.659            | -20                  | 0              | 157.650            | 131.700           | -16                  | 0              |
| Diğer Sanayi Ürünleri                     | 7.804             | 7.595             | -3                   | 0              | 76.996             | 68.366            | -11                  | 0              |
| Süs Bitkileri                             | 5.276             | 5.087             | -4                   | 0              | 60.946             | 54.721            | -10                  | 0              |
| <b>T O P L A M</b>                        | <b>11.027.533</b> | <b>10.482.987</b> | <b>-5</b>            | <b>100</b>     | <b>104.439.491</b> | <b>95.135.724</b> | <b>-9</b>            | <b>100</b>     |

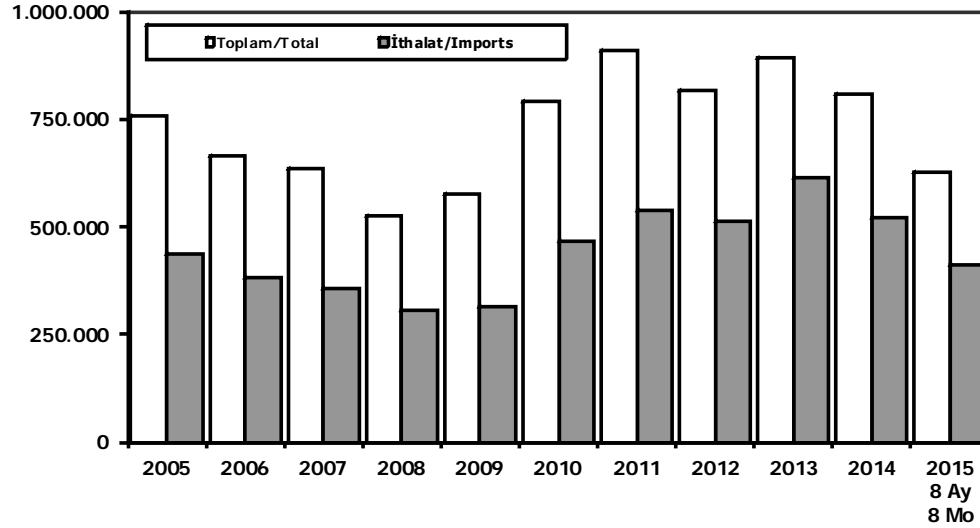
Kaynak: TİM

**First 3 Sectors:**

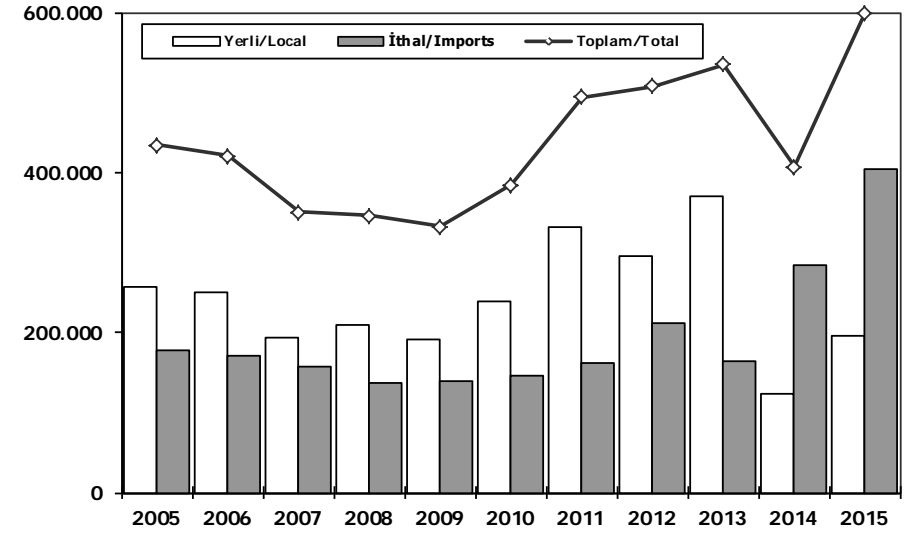
- 1- Transport Vehicle and Component Industry
- 2- Ready Wear and Confection
- 3- Chemical Articles and Products



## Toplam Pazar (Otomobil+T.Araç) Total Market (P.Cars+C.V)



## Hafif Araçlar Pazarı (2005-2015 Ocak-Ağustos) LV Market (2005-2015 January-August)

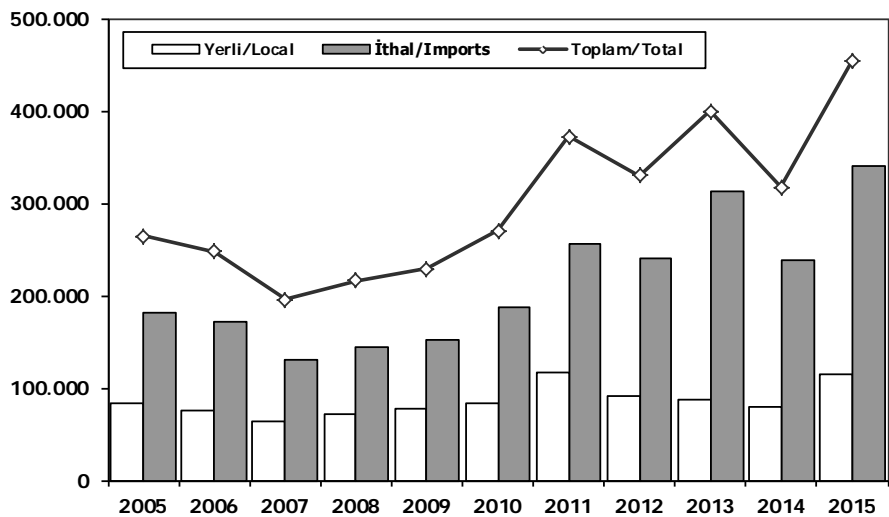


|                            | 2005    | 2006    | 2007    | 2008    | 2009    | 2010    | 2011    | 2012    | 2013    | 2014    | 2014 8 Ay 8 Mo | 2015 8 Ay 8 Mo |
|----------------------------|---------|---------|---------|---------|---------|---------|---------|---------|---------|---------|----------------|----------------|
| <b>Toplam/Total</b>        | 758.537 | 665.515 | 634.206 | 526.544 | 575.869 | 793.172 | 910.867 | 817.620 | 893.124 | 807.486 | 430.169        | 626.766        |
| <b>İthalat/Imports</b>     | 436.033 | 382.460 | 355.752 | 306.087 | 313.921 | 465.408 | 538.532 | 511.694 | 615.609 | 522.842 | 289.089        | 410.877        |
| <b>İthalat/Imports (%)</b> | 57      | 57      | 56      | 58      | 55      | 59      | 59      | 63      | 69      | 65      | 67             | 66             |

|                            | 2005    | 2006    | 2007    | 2008    | 2009    | 2010    | 2011    | 2012    | 2013    | 2014    | 2015    |
|----------------------------|---------|---------|---------|---------|---------|---------|---------|---------|---------|---------|---------|
| <b>Yerli/Local</b>         | 256.042 | 249.358 | 193.376 | 208.526 | 192.016 | 238.914 | 331.225 | 296.100 | 370.093 | 123.875 | 195.459 |
| <b>İthal/Imports</b>       | 178.039 | 171.201 | 157.189 | 137.841 | 140.350 | 145.795 | 162.450 | 212.097 | 164.984 | 283.092 | 403.504 |
| <b>Toplam/Total</b>        | 434.081 | 420.559 | 350.565 | 346.367 | 332.366 | 384.709 | 493.675 | 508.197 | 535.077 | 406.967 | 598.963 |
| <b>İthalat/Imports (%)</b> | 41      | 41      | 45      | 40      | 42      | 38      | 33      | 42      | 31      | 70      | 67      |

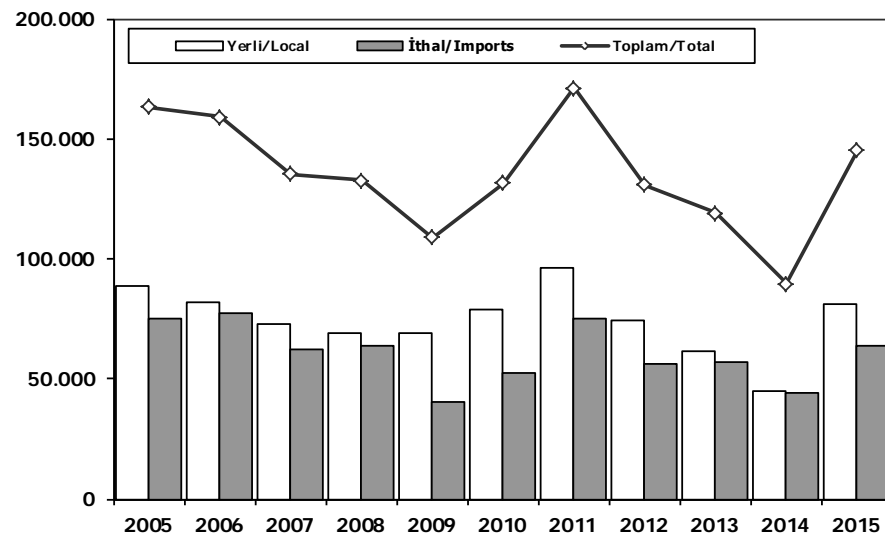
## Otomobil Pazarı (2005-2015 Ocak-Ağustos)

### P.Cars Market (2005-2015 January-August)



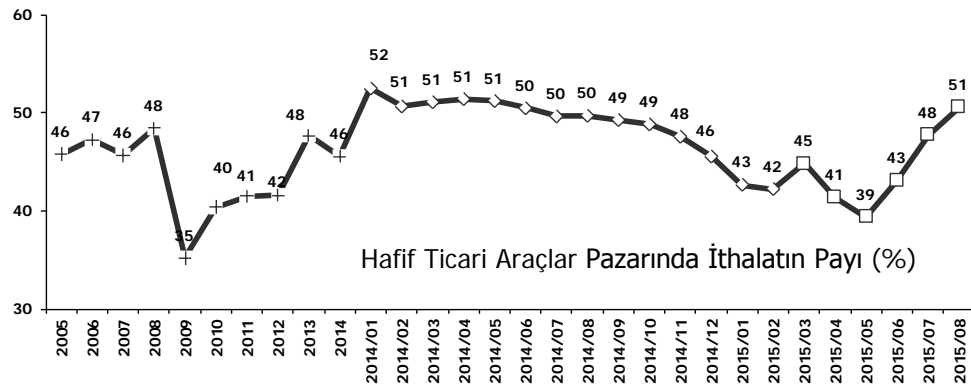
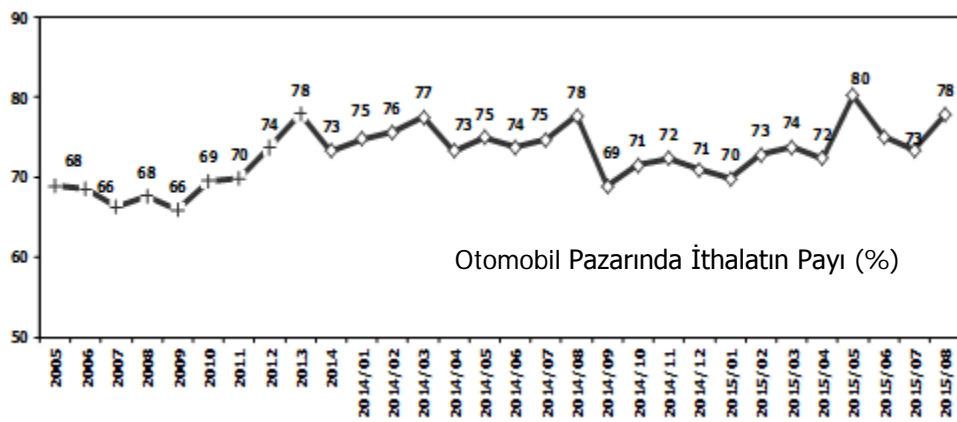
## Hafif Ticari Araçlar Pazarı (2005-2015 Ocak-Ağustos)

### Light Commercial Vehicle Market (2005-2015 January-August)



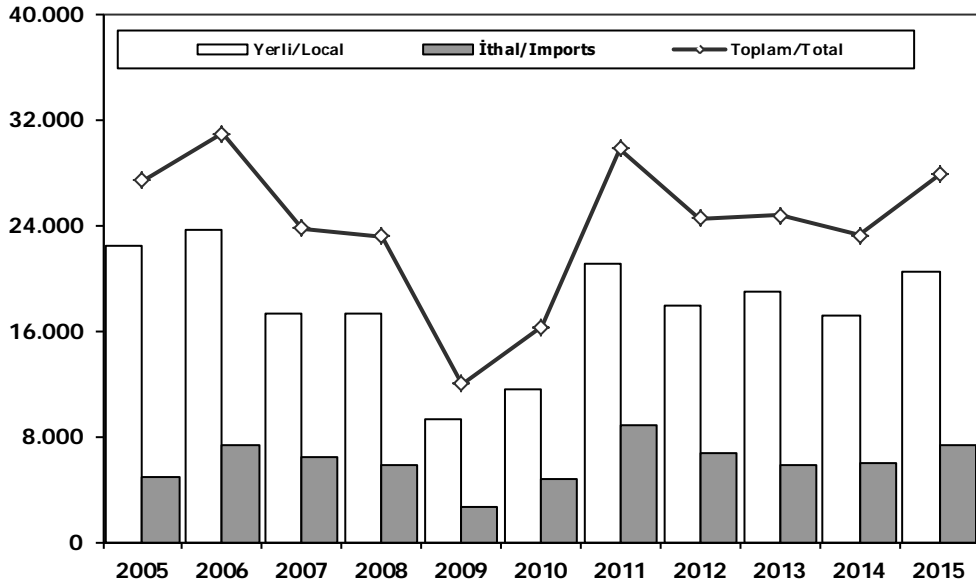
|                     | 2005    | 2006    | 2007    | 2008    | 2009    | 2010    | 2011    | 2012    | 2013    | 2014    | 2015    |
|---------------------|---------|---------|---------|---------|---------|---------|---------|---------|---------|---------|---------|
| Yerli/Local         | 82.658  | 75.373  | 64.648  | 71.504  | 76.909  | 83.416  | 116.121 | 90.473  | 86.633  | 78.863  | 114.439 |
| İthal/Imports       | 181.281 | 172.264 | 131.198 | 144.573 | 151.961 | 186.510 | 256.018 | 239.784 | 312.796 | 238.643 | 339.378 |
| Toplam/Total        | 263.939 | 247.637 | 195.846 | 216.077 | 228.870 | 269.926 | 372.139 | 330.257 | 399.429 | 317.506 | 453.817 |
| İthalat/Imports (%) | 69      | 70      | 67      | 67      | 66      | 69      | 69      | 73      | 78      | 75      | 75      |

|                     | 2005    | 2006    | 2007    | 2008    | 2009    | 2010    | 2011    | 2012    | 2013    | 2014   | 2015    |
|---------------------|---------|---------|---------|---------|---------|---------|---------|---------|---------|--------|---------|
| Yerli/Local         | 88.543  | 81.816  | 73.193  | 68.846  | 68.886  | 79.034  | 95.976  | 74.511  | 61.656  | 45.012 | 81.020  |
| İthal/Imports       | 74.761  | 77.094  | 62.178  | 63.953  | 40.055  | 52.404  | 75.207  | 56.316  | 57.297  | 44.449 | 64.126  |
| Toplam/Total        | 163.304 | 158.910 | 135.371 | 132.799 | 108.941 | 131.438 | 171.183 | 130.827 | 118.953 | 89.461 | 145.146 |
| İthalat/Imports (%) | 46      | 49      | 46      | 48      | 37      | 40      | 44      | 43      | 48      | 50     | 44      |



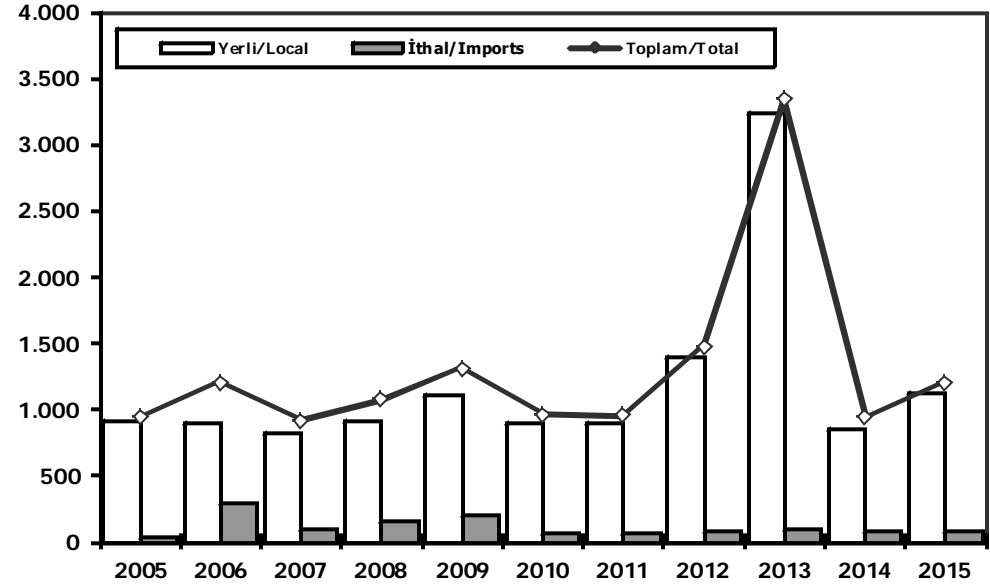
## Ağır Ticari Araçlar Pazarı (2005-2015 Ocak-Ağustos)

### HCV Market (2005-2015 January-August)



## Otobüs Pazarı (2005-2015 Ocak-Ağustos)

### Bus Market (2005-2015 January-August)

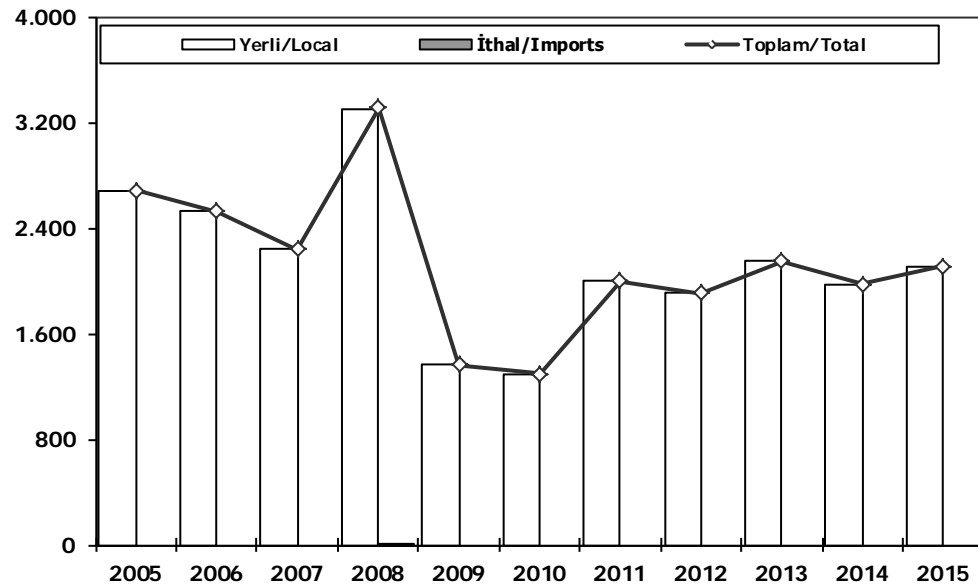


|                     | 2005   | 2006   | 2007   | 2008   | 2009   | 2010   | 2011   | 2012   | 2013   | 2014   | 2015   |
|---------------------|--------|--------|--------|--------|--------|--------|--------|--------|--------|--------|--------|
| Yerli/Local         | 22.414 | 23.647 | 17.353 | 17.308 | 9.246  | 11.591 | 21.027 | 17.853 | 18.870 | 17.205 | 20.430 |
| İthal/Imports       | 4.952  | 7.267  | 6.407  | 5.814  | 2.704  | 4.696  | 8.759  | 6.651  | 5.823  | 5.997  | 7.373  |
| Toplam/Total        | 27.366 | 30.914 | 23.760 | 23.122 | 11.950 | 16.287 | 29.786 | 24.504 | 24.693 | 23.202 | 27.803 |
| İthalat/Imports (%) | 18     | 24     | 27     | 25     | 23     | 29     | 29     | 27     | 24     | 26     | 27     |

|                     | 2005 | 2006  | 2007 | 2008  | 2009  | 2010 | 2011 | 2012  | 2013  | 2014 | 2015  |
|---------------------|------|-------|------|-------|-------|------|------|-------|-------|------|-------|
| Yerli/Local         | 908  | 902   | 821  | 915   | 1.113 | 892  | 892  | 1.398 | 3.231 | 860  | 1.127 |
| İthal/Imports       | 31   | 299   | 95   | 160   | 199   | 70   | 61   | 79    | 105   | 80   | 80    |
| Toplam/Total        | 939  | 1.201 | 916  | 1.075 | 1.312 | 962  | 953  | 1.477 | 3.336 | 940  | 1.207 |
| İthalat/Imports (%) | 3    | 25    | 10   | 15    | 15    | 7    | 6    | 5     | 3     | 9    | 7     |

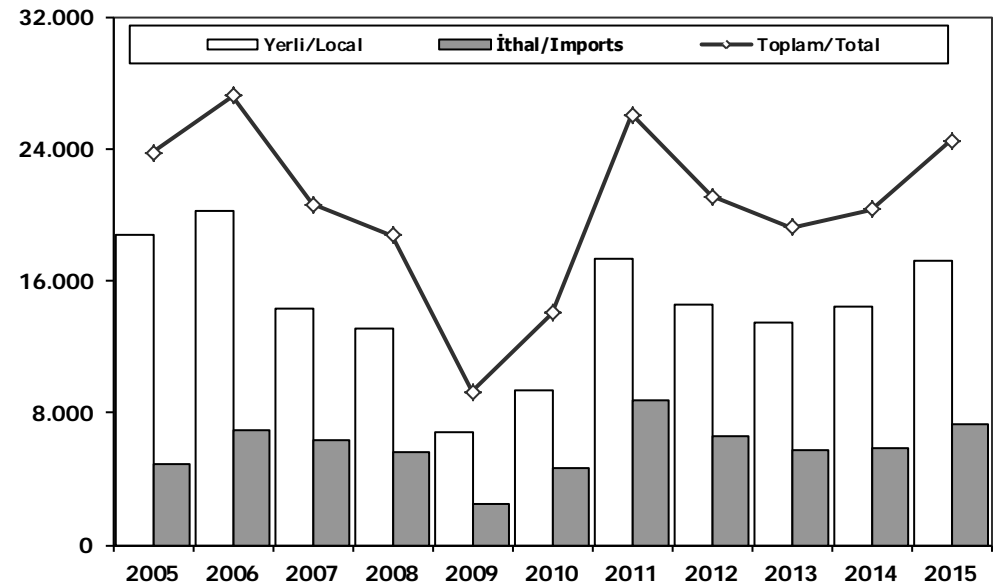
## Midibüs Pazarı (2005-2015 Ocak-Ağustos) (7-9 mt / 25-35 Kişilik)

Midibus (2005-2015 January-August) Market (7-9 mt / 25-35 Passengers)



## Kamyon Pazarı (2005-2015 Ocak-Ağustos)

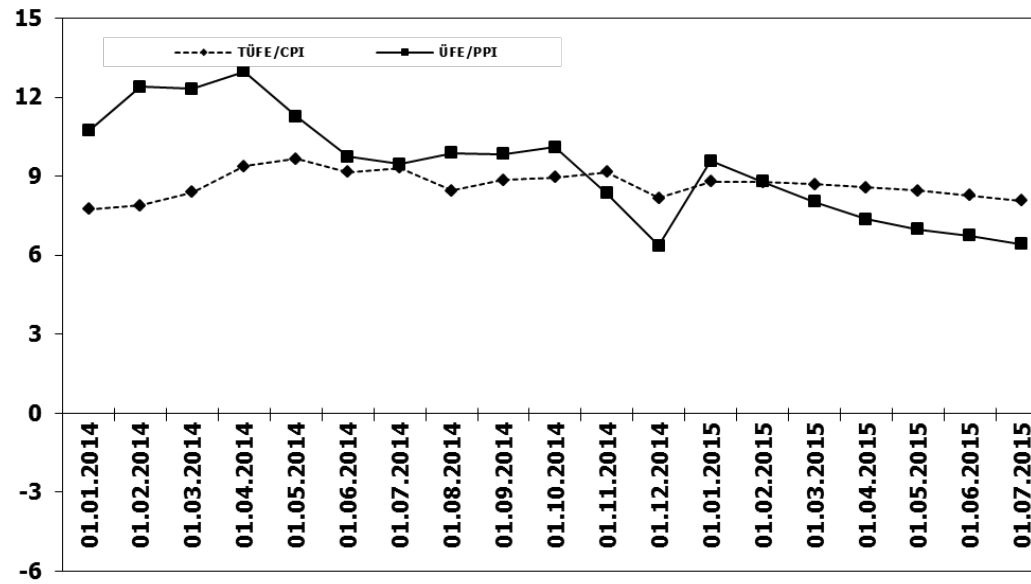
Truck Market (2005-2015 January-August)



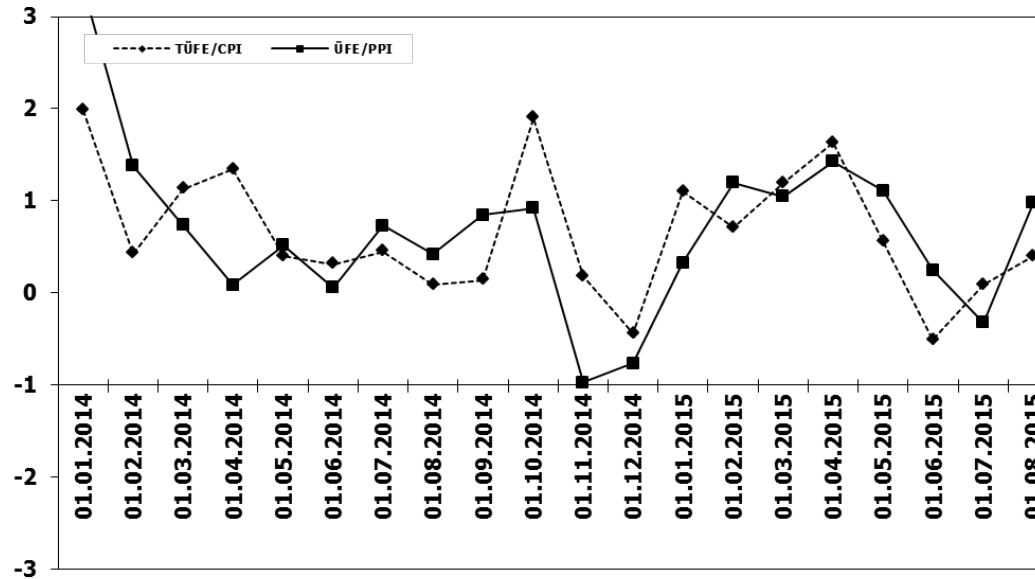
|                     | 2005  | 2006  | 2007  | 2008  | 2009  | 2010  | 2011  | 2012  | 2013  | 2014  | 2015  |
|---------------------|-------|-------|-------|-------|-------|-------|-------|-------|-------|-------|-------|
| Yerli/Local         | 2.684 | 2.528 | 2.235 | 3.302 | 1.365 | 1.291 | 1.997 | 1.903 | 2.150 | 1.970 | 2.108 |
| İthal/Imports       | 0     | 0     | 0     | 11    | 0     | 0     | 0     | 0     | 0     | 0     | 0     |
| Toplam/Total        | 2.684 | 2.528 | 2.235 | 3.313 | 1.365 | 1.291 | 1.997 | 1.903 | 2.150 | 1.970 | 2.108 |
| İthalat/Imports (%) | 0     | 0     | 0     | 0     | 0     | 0     | 0     | 0     | 0     | 0     | 0     |

|                     | 2005   | 2006   | 2007   | 2008   | 2009  | 2010   | 2011   | 2012   | 2013   | 2014   | 2015   |
|---------------------|--------|--------|--------|--------|-------|--------|--------|--------|--------|--------|--------|
| Yerli/Local         | 18.822 | 20.217 | 14.297 | 13.091 | 6.768 | 9.408  | 17.344 | 14.552 | 13.489 | 14.375 | 17.195 |
| İthal/Imports       | 4.921  | 6.968  | 6.312  | 5.643  | 2.505 | 4.626  | 8.698  | 6.572  | 5.718  | 5.917  | 7.293  |
| Toplam/Total        | 23.743 | 27.185 | 20.609 | 18.734 | 9.273 | 14.034 | 26.042 | 21.124 | 19.207 | 20.292 | 24.488 |
| İthalat/Imports (%) | 21     | 26     | 31     | 30     | 27    | 33     | 33     | 31     | 30     | 29     | 30     |

## TÜFE ve ÜFE'nin Yıllık Değişimi (%) CPI and PPI Yearly Changes (%)



## TÜFE ve ÜFE'nin Aylık Değişimi (%) CPI and PPI Monthly Changes (%)



## 2015 Otomotiv Sanayii Dış Satışlar

### 2015 Automotive Industry Exports Sales

| TIPLER-Types        | Ocak<br>January | Şubat<br>February | Mart<br>March | Nisan<br>April | Mayıs<br>May  | Haziran<br>June | Temmuz<br>July | Ağustos<br>August | Eylül<br>September | Ekim<br>October | Kasım<br>November | Aralık<br>December | TOPLAM<br>Total |
|---------------------|-----------------|-------------------|---------------|----------------|---------------|-----------------|----------------|-------------------|--------------------|-----------------|-------------------|--------------------|-----------------|
| <b>Otomobil</b>     | <b>48.533</b>   | <b>51.237</b>     | <b>58.872</b> | <b>52.089</b>  | <b>36.570</b> | <b>56.556</b>   | <b>37.308</b>  | <b>35.805</b>     | <b>0</b>           | <b>0</b>        | <b>0</b>          | <b>0</b>           | <b>376.970</b>  |
| OTOMOBİL-Pass. Car  | 48.533          | 51.237            | 58.872        | 52.089         | 36.570        | 56.556          | 37.308         | 35.805            | 0                  | 0               | 0                 | 0                  | 376.970         |
| <b>TİCARİ ARAC</b>  | <b>30.755</b>   | <b>29.357</b>     | <b>31.084</b> | <b>32.631</b>  | <b>22.528</b> | <b>36.124</b>   | <b>36.488</b>  | <b>20.989</b>     | <b>0</b>           | <b>0</b>        | <b>0</b>          | <b>0</b>           | <b>239.956</b>  |
| * KAMYONET-Pick Up  | 26.679          | 25.609            | 26.296        | 27.006         | 18.550        | 31.234          | 31.941         | 17.914            | 0                  | 0               | 0                 | 0                  | 205.229         |
| * KAMYON-Truck      | 88              | 13                | 58            | 127            | 93            | 112             | 151            | 130               | 0                  | 0               | 0                 | 0                  | 772             |
| * MIDİBÜS-Midibus   | 31              | 40                | 19            | 18             | 35            | 40              | 40             | 25                | 0                  | 0               | 0                 | 0                  | 248             |
| * MINİBÜS-Minibus   | 3.642           | 3.262             | 4.224         | 4.984          | 3.389         | 4.213           | 3.949          | 2.474             | 0                  | 0               | 0                 | 0                  | 30.137          |
| * OTOBÜS-Bus        | 315             | 433               | 487           | 496            | 461           | 525             | 407            | 446               | 0                  | 0               | 0                 | 0                  | 3.570           |
| <b>Traktör</b>      | <b>1.342</b>    | <b>1.231</b>      | <b>1.268</b>  | <b>949</b>     | <b>939</b>    | <b>1.203</b>    | <b>1.211</b>   | <b>1.393</b>      | <b>0</b>           | <b>0</b>        | <b>0</b>          | <b>0</b>           | <b>9.536</b>    |
| TRAKTÖR-F.Tractor   | 1.342           | 1.231             | 1.268         | 949            | 939           | 1.203           | 1.211          | 1.393             | 0                  | 0               | 0                 | 0                  | 9.536           |
| <b>TOPLAM-Total</b> | <b>80.630</b>   | <b>81.825</b>     | <b>91.224</b> | <b>85.669</b>  | <b>60.037</b> | <b>93.883</b>   | <b>75.007</b>  | <b>58.187</b>     | <b>0</b>           | <b>0</b>        | <b>0</b>          | <b>0</b>           | <b>626.462</b>  |
| <b>Otomobil</b>     |                 |                   |               |                |               |                 |                |                   |                    |                 |                   |                    |                 |
| FİRMALAR-Companies  | Ocak<br>January | Şubat<br>February | Mart<br>March | Nisan<br>April | Mayıs<br>May  | Haziran<br>June | Temmuz<br>July | Ağustos<br>August | Eylül<br>September | Ekim<br>October | Kasım<br>November | Aralık<br>December | TOPLAM<br>Total |
| FORD OTOSAN         | 837             | 1.356             | 1.289         | 1.793          | 1.107         | 1.264           | 2.296          | 1.087             |                    |                 |                   |                    | 11.029          |
| HONDA TÜRKİYE       | 0               | 89                | 352           | 35             | 270           | 250             | 473            | 153               |                    |                 |                   |                    | 1.622           |
| HYUNDAI ASSAN       | 13.650          | 15.500            | 18.420        | 17.400         | 16.900        | 18.393          | 8.700          | 18.370            |                    |                 |                   |                    | 127.333         |
| OYAK RENAULT        | 21.671          | 24.980            | 28.107        | 23.420         | 11.183        | 26.268          | 19.228         | 11.321            |                    |                 |                   |                    | 166.178         |
| TOFAŞ               | 3.163           | 3.138             | 2.941         | 2.313          | 1.826         | 3.509           | 1.796          | 613               |                    |                 |                   |                    | 19.299          |
| TOYOTA              | 9.212           | 6.174             | 7.763         | 7.128          | 5.284         | 6.872           | 4.815          | 4.261             |                    |                 |                   |                    | 51.509          |
| <b>TOPLAM-Total</b> | <b>48.533</b>   | <b>51.237</b>     | <b>58.872</b> | <b>52.089</b>  | <b>36.570</b> | <b>56.556</b>   | <b>37.308</b>  | <b>35.805</b>     | <b>0</b>           | <b>0</b>        | <b>0</b>          | <b>0</b>           | <b>376.970</b>  |
| <b>Kamyonet</b>     |                 |                   |               |                |               |                 |                |                   |                    |                 |                   |                    |                 |
| FİRMALAR-Companies  | Ocak<br>January | Şubat<br>February | Mart<br>March | Nisan<br>April | Mayıs<br>May  | Haziran<br>June | Temmuz<br>July | Ağustos<br>August | Eylül<br>September | Ekim<br>October | Kasım<br>November | Aralık<br>December | TOPLAM<br>Total |
| FORD OTOSAN         | 16.006          | 14.029            | 14.423        | 14.428         | 8.842         | 15.960          | 17.128         | 12.451            |                    |                 |                   |                    | 113.267         |
| KARSAN              | 0               | 0                 | 0             | 0              | 276           | 450             | 203            | 555               |                    |                 |                   |                    | 1.484           |
| OTOKAR              | 4               | 2                 | 18            | 0              | 33            | 0               | 0              | 0                 |                    |                 |                   |                    | 57              |
| TOFAŞ               | 10.669          | 11.578            | 11.855        | 12.578         | 9.399         | 14.824          | 14.610         | 4.908             |                    |                 |                   |                    | 90.421          |
| <b>TOPLAM-Total</b> | <b>26.679</b>   | <b>25.609</b>     | <b>26.296</b> | <b>27.006</b>  | <b>18.550</b> | <b>31.234</b>   | <b>31.941</b>  | <b>17.914</b>     | <b>0</b>           | <b>0</b>        | <b>0</b>          | <b>0</b>           | <b>205.229</b>  |
| <b>Minibüs</b>      |                 |                   |               |                |               |                 |                |                   |                    |                 |                   |                    |                 |
| FİRMALAR-Companies  | Ocak<br>January | Şubat<br>February | Mart<br>March | Nisan<br>April | Mayıs<br>May  | Haziran<br>June | Temmuz<br>July | Ağustos<br>August | Eylül<br>September | Ekim<br>October | Kasım<br>November | Aralık<br>December | TOPLAM<br>Total |
| FORD OTOSAN         | 3.641           | 3.262             | 4.223         | 4.980          | 3.374         | 4.201           | 3.946          | 2.474             |                    |                 |                   |                    | 30.101          |
| KARSAN              | 1               | 0                 | 1             | 4              | 15            | 12              | 3              | 0                 |                    |                 |                   |                    | 36              |
| <b>TOPLAM-Total</b> | <b>3.642</b>    | <b>3.262</b>      | <b>4.224</b>  | <b>4.984</b>   | <b>3.389</b>  | <b>4.213</b>    | <b>3.949</b>   | <b>2.474</b>      | <b>0</b>           | <b>0</b>        | <b>0</b>          | <b>0</b>           | <b>30.137</b>   |
| <b>Kamyon</b>       |                 |                   |               |                |               |                 |                |                   |                    |                 |                   |                    |                 |
| FİRMALAR-Companies  | Ocak<br>January | Şubat<br>February | Mart<br>March | Nisan<br>April | Mayıs<br>May  | Haziran<br>June | Temmuz<br>July | Ağustos<br>August | Eylül<br>September | Ekim<br>October | Kasım<br>November | Aralık<br>December | TOPLAM<br>Total |
| FORD OTOSAN         | 7               | 2                 | 2             | 16             | 19            | 25              | 49             | 25                |                    |                 |                   |                    | 145             |
| KARSAN              | 0               | 2                 | 0             | 0              | 0             | 0               | 0              | 1                 |                    |                 |                   |                    | 3               |
| M. BENZ TÜRK        | 81              | 9                 | 56            | 111            | 74            | 87              | 102            | 104               |                    |                 |                   |                    | 624             |
| <b>TOPLAM-Total</b> | <b>88</b>       | <b>13</b>         | <b>58</b>     | <b>127</b>     | <b>93</b>     | <b>112</b>      | <b>151</b>     | <b>130</b>        | <b>0</b>           | <b>0</b>        | <b>0</b>          | <b>0</b>           | <b>772</b>      |
| <b>Midibüs</b>      |                 |                   |               |                |               |                 |                |                   |                    |                 |                   |                    |                 |
| FİRMALAR-Companies  | Ocak<br>January | Şubat<br>February | Mart<br>March | Nisan<br>April | Mayıs<br>May  | Haziran<br>June | Temmuz<br>July | Ağustos<br>August | Eylül<br>September | Ekim<br>October | Kasım<br>November | Aralık<br>December | TOPLAM<br>Total |
| A.I.O.S.            | 8               | 14                | 2             | 3              | 10            | 1               | 2              | 1                 |                    |                 |                   |                    | 41              |
| KARSAN              | 15              | 0                 | 0             | 0              | 4             | 8               | 3              | 1                 |                    |                 |                   |                    | 31              |
| OTOKAR              | 8               | 25                | 17            | 14             | 21            | 30              | 35             | 23                |                    |                 |                   |                    | 173             |
| TEMSA GLOBAL        | 0               | 1                 | 0             | 1              | 0             | 1               | 0              | 0                 |                    |                 |                   |                    | 3               |
| <b>TOPLAM-Total</b> | <b>31</b>       | <b>40</b>         | <b>19</b>     | <b>18</b>      | <b>35</b>     | <b>40</b>       | <b>40</b>      | <b>25</b>         | <b>0</b>           | <b>0</b>        | <b>0</b>          | <b>0</b>           | <b>248</b>      |
| <b>Otobüs</b>       |                 |                   |               |                |               |                 |                |                   |                    |                 |                   |                    |                 |
| FİRMALAR-Companies  | Ocak<br>January | Şubat<br>February | Mart<br>March | Nisan<br>April | Mayıs<br>May  | Haziran<br>June | Temmuz<br>July | Ağustos<br>August | Eylül<br>September | Ekim<br>October | Kasım<br>November | Aralık<br>December | TOPLAM<br>Total |
| A.I.O.S.            | 1               | 1                 | 23            | 23             | 3             | 22              | 7              | 12                |                    |                 |                   |                    | 92              |
| M. BENZ TÜRK        | 204             | 252               | 247           | 293            | 289           | 309             | 199            | 298               |                    |                 |                   |                    | 2.091           |
| MAN TÜRKİYE         | 107             | 153               | 188           | 140            | 133           | 96              | 104            | 77                |                    |                 |                   |                    | 998             |
| OTOKAR              | 3               | 5                 | 9             | 24             | 12            | 67              | 67             | 21                |                    |                 |                   |                    | 208             |
| TEMSA GLOBAL        | 0               | 22                | 20            | 16             | 24            | 31              | 30             | 38                |                    |                 |                   |                    | 181             |
| <b>TOPLAM-Total</b> | <b>315</b>      | <b>433</b>        | <b>487</b>    | <b>496</b>     | <b>461</b>    | <b>525</b>      | <b>407</b>     | <b>446</b>        | <b>0</b>           | <b>0</b>        | <b>0</b>          | <b>0</b>           | <b>3.570</b>    |
| <b>Traktör</b>      |                 |                   |               |                |               |                 |                |                   |                    |                 |                   |                    |                 |
| FİRMALAR-Companies  | Ocak<br>January | Şubat<br>February | Mart<br>March | Nisan<br>April | Mayıs<br>May  | Haziran<br>June | Temmuz<br>July | Ağustos<br>August | Eylül<br>September | Ekim<br>October | Kasım<br>November | Aralık<br>December | TOPLAM<br>Total |
| HATTAT TARIM        | 33              | 88                | 39            | 49             | 57            | 68              | 38             | 91                |                    |                 |                   |                    | 463             |
| TÜRK TRAKTÖR        | 1.309           | 1.143             | 1.229         | 900            | 882           | 1.135           | 1.173          | 1.302             |                    |                 |                   |                    | 9.073           |
| <b>TOPLAM-Total</b> | <b>1.342</b>    | <b>1.231</b>      | <b>1.268</b>  | <b>949</b>     | <b>939</b>    | <b>1.203</b>    | <b>1.211</b>   | <b>1.393</b>      | <b>0</b>           | <b>0</b>        | <b>0</b>          | <b>0</b>           | <b>9.536</b>    |

## 2015 Yılı İthal Hafif Araç Satışları 2015 Light Vehicles Import Sales

|                | 2014 TOPLAMI 2014<br>Total | 1             | 2             | 3             | 4             | 5             | 6             | 7             | 8             | 9        | 10       | 11       | 12       | 2015 TOPLAMI 2015<br>Total |
|----------------|----------------------------|---------------|---------------|---------------|---------------|---------------|---------------|---------------|---------------|----------|----------|----------|----------|----------------------------|
| VOLKSWAGEN     | 84.646                     | 4.491         | 6.942         | 9.711         | 10.487        | 10.793        | 8.922         | 10.620        | 10.473        |          |          |          |          | 72.439                     |
| FORD           | 35.682                     | 1.101         | 2.782         | 3.636         | 4.681         | 4.678         | 4.645         | 3.987         | 4.081         |          |          |          |          | 29.591                     |
| OPEL           | 39.255                     | 952           | 2.239         | 3.964         | 4.753         | 3.943         | 4.460         | 3.378         | 4.069         |          |          |          |          | 27.758                     |
| DACIA          | 27.897                     | 1.709         | 2.289         | 2.968         | 2.872         | 2.918         | 3.661         | 3.362         | 3.552         |          |          |          |          | 23.331                     |
| RENAULT        | 25.572                     | 653           | 1.309         | 2.874         | 1.927         | 3.566         | 4.002         | 2.533         | 2.533         |          |          |          |          | 19.397                     |
| B.M.W          | 26.174                     | 1.219         | 1.536         | 2.369         | 2.717         | 2.896         | 2.652         | 3.066         | 2.881         |          |          |          |          | 19.336                     |
| MERCEDES       | 23.100                     | 417           | 1.384         | 2.200         | 2.135         | 2.101         | 3.558         | 3.283         | 3.206         |          |          |          |          | 18.284                     |
| NISSAN         | 19.422                     | 949           | 1.372         | 1.859         | 2.304         | 2.402         | 2.305         | 2.307         | 2.209         |          |          |          |          | 15.707                     |
| PEUGEOT        | 17.026                     | 846           | 1.110         | 2.039         | 2.635         | 2.739         | 2.086         | 1.973         | 1.648         |          |          |          |          | 15.076                     |
| HYUNDAI        | 21.685                     | 784           | 1.011         | 1.884         | 2.259         | 2.392         | 2.423         | 1.676         | 2.175         |          |          |          |          | 14.604                     |
| SKODA          | 14.537                     | 515           | 1.568         | 2.120         | 2.355         | 2.162         | 2.086         | 1.803         | 1.709         |          |          |          |          | 14.318                     |
| AUDI           | 17.809                     | 610           | 1.103         | 1.685         | 2.006         | 1.738         | 1.604         | 1.609         | 1.603         |          |          |          |          | 11.958                     |
| CITROEN        | 14.389                     | 683           | 941           | 1.522         | 2.077         | 1.406         | 1.810         | 1.388         | 1.658         |          |          |          |          | 11.485                     |
| SEAT           | 12.697                     | 164           | 1.103         | 1.496         | 1.852         | 1.740         | 1.768         | 1.679         | 1.586         |          |          |          |          | 11.388                     |
| KIA            | 11.017                     | 330           | 676           | 1.183         | 1.245         | 1.120         | 1.185         | 958           | 994           |          |          |          |          | 7.691                      |
| TOYOTA         | 10.146                     | 327           | 535           | 1.070         | 1.547         | 1.006         | 757           | 916           | 997           |          |          |          |          | 7.155                      |
| VOLVO          | 6.060                      | 295           | 290           | 657           | 751           | 856           | 701           | 453           | 452           |          |          |          |          | 4.455                      |
| FIAT           | 6.179                      | 248           | 377           | 481           | 617           | 382           | 520           | 435           | 478           |          |          |          |          | 3.538                      |
| JEEP           | 1.960                      | 239           | 281           | 308           | 383           | 268           | 325           | 264           | 253           |          |          |          |          | 2.321                      |
| HONDA          | 3.269                      | 98            | 241           | 273           | 152           | 193           | 211           | 422           | 569           |          |          |          |          | 2.159                      |
| SUBARU         | 1.402                      | 65            | 40            | 261           | 176           | 144           | 140           | 130           | 143           |          |          |          |          | 1.099                      |
| MINI (İngiliz) | 1.071                      | 21            | 47            | 139           | 136           | 143           | 135           | 177           | 120           |          |          |          |          | 918                        |
| LAND ROVER     | 1.207                      | 31            | 87            | 240           | 94            | 132           | 148           | 66            | 79            |          |          |          |          | 877                        |
| MITSUBISHI     | 1.159                      | 64            | 92            | 149           | 149           | 105           | 119           | 131           | 134           |          |          |          |          | 858                        |
| MAZDA          | 1.291                      | 27            | 80            | 49            | 87            | 130           | 181           | 157           | 144           |          |          |          |          | 855                        |
| ALFA ROMEO     | 967                        | 34            | 59            | 56            | 76            | 134           | 79            | 46            | 60            |          |          |          |          | 544                        |
| SSANGYONG      | 531                        | 44            | 21            | 31            | 29            | 49            | 163           | 94            | 65            |          |          |          |          | 496                        |
| PROTON         | 707                        | 55            | 40            | 67            | 70            | 84            | 70            | 50            | 25            |          |          |          |          | 461                        |
| PORSCHE        | 588                        | 45            | 48            | 53            | 47            | 55            | 34            | 46            | 73            |          |          |          |          | 401                        |
| CHERY          | 325                        | 26            | 38            | 46            | 39            | 35            | 32            | 29            | 26            |          |          |          |          | 271                        |
| JAGUAR         | 52                         | 0             | 25            | 50            | 7             | 6             | 8             | 31            | 17            |          |          |          |          | 144                        |
| TATA           | 126                        | 21            | 24            | 21            | 19            | 23            | 19            | 3             | 3             |          |          |          |          | 133                        |
| SUZUKI         | 958                        | 27            | 17            | 20            | 28            | 14            | 2             | 6             | 13            |          |          |          |          | 127                        |
| SMART          | 76                         | 4             | 3             | 10            | 11            | 5             | 7             | 4             | 36            |          |          |          |          | 80                         |
| MASERATI       | 83                         | 2             | 2             | 3             | 9             | 9             | 7             | 5             | 4             |          |          |          |          | 41                         |
| INFINITI       | 6                          | 1             | 1             | 1             | 1             | 10            | 7             | 8             | 1             |          |          |          |          | 29                         |
| GEELY          | 95                         | 4             | 7             | 3             | 6             | 3             | 1             | 0             | 1             |          |          |          |          | 25                         |
| BENTLEY        | 21                         | 0             | 4             | 1             | 0             | 3             | 1             | 1             | 1             |          |          |          |          | 11                         |
| LAMBORGHINI    | 2                          | 1             | 1             | 2             | 1             | 0             | 1             | 0             | 0             |          |          |          |          | 6                          |
| FERRARI        | 11                         | 0             | 0             | 1             | 2             | 2             | 0             | 0             | 1             |          |          |          |          | 6                          |
| LEXUS          | 0                          | 0             | 0             | 0             | 0             | 0             | 0             | 0             | 3             |          |          |          |          | 3                          |
| LANCIA         | 210                        | 0             | 2             | 0             | 0             | 0             | 0             | 0             | 0             |          |          |          |          | 2                          |
| CHEVROLET      | 572                        | 0             | 0             | 0             | 0             | 0             | 0             | 0             | 0             |          |          |          |          | 0                          |
| <b>TOPLAM</b>  | <b>429.982</b>             | <b>17.102</b> | <b>29.699</b> | <b>45.445</b> | <b>50.741</b> | <b>50.385</b> | <b>50.835</b> | <b>47.096</b> | <b>48.075</b> | <b>0</b> | <b>0</b> | <b>0</b> | <b>0</b> | <b>339.378</b>             |

### 2015 YILI İTHAL HAFİF TİCARİ ARAÇ SATIŞLARI / Light Commercial Vehicles Import 2015

|               | 2014 TOPLAMI 2014<br>Total | 1            | 2            | 3            | 4            | 5            | 6            | 7            | 8             | 9        | 10       | 11       | 12       | 2015 TOPLAMI 2015<br>Total |
|---------------|----------------------------|--------------|--------------|--------------|--------------|--------------|--------------|--------------|---------------|----------|----------|----------|----------|----------------------------|
| VOLKSWAGEN    | 24.001                     | 1.336        | 2.575        | 3.182        | 2.680        | 2.054        | 2.049        | 3.606        | 3.084         |          |          |          |          | 20.566                     |
| RENAULT       | 8.716                      | 501          | 673          | 1.104        | 1.030        | 923          | 1.459        | 1.182        | 1.437         |          |          |          |          | 8.309                      |
| FIAT          | 7.664                      | 347          | 491          | 782          | 815          | 786          | 685          | 531          | 1.022         |          |          |          |          | 5.459                      |
| MERCEDES      | 8.028                      | 391          | 424          | 1.009        | 654          | 642          | 683          | 713          | 924           |          |          |          |          | 5.440                      |
| PEUGEOT       | 5.832                      | 303          | 403          | 704          | 824          | 738          | 708          | 655          | 889           |          |          |          |          | 5.224                      |
| DACIA         | 6.572                      | 250          | 242          | 696          | 642          | 583          | 731          | 563          | 703           |          |          |          |          | 4.410                      |
| CITROEN       | 6.048                      | 269          | 392          | 730          | 684          | 301          | 432          | 777          | 443           |          |          |          |          | 4.028                      |
| KIA           | 2.057                      | 147          | 221          | 136          | 444          | 373          | 373          | 367          | 613           |          |          |          |          | 2.674                      |
| MITSUBISHI    | 4.188                      | 390          | 518          | 246          | 205          | 191          | 321          | 334          | 2.529         |          |          |          |          | 2.529                      |
| IVECO         | 2.524                      | 117          | 139          | 282          | 235          | 210          | 224          | 131          | 257           |          |          |          |          | 1.595                      |
| HYUNDAI       | 1.565                      | 89           | 104          | 164          | 208          | 142          | 113          | 181          | 138           |          |          |          |          | 1.139                      |
| TOYOTA        | 1.670                      | 73           | 45           | 255          | 207          | 299          | 177          | 55           | 26            |          |          |          |          | 1.137                      |
| FORD          | 333                        | 22           | 5            | 22           | 22           | 36           | 46           | 221          | 609           |          |          |          |          | 983                        |
| SSANGYONG     | 626                        | 31           | 34           | 69           | 71           | 8            | 13           | 17           | 13            |          |          |          |          | 256                        |
| ISUZU         | 1.728                      | 27           | 19           | 32           | 59           | 25           | 15           | 13           | 17            |          |          |          |          | 207                        |
| TATA          | 290                        | 22           | 21           | 23           | 21           | 19           | 21           | 19           | 17            |          |          |          |          | 163                        |
| NISSAN        | 275                        | 1            | 0            | 0            | 2            | 0            | 0            | 4            | 0             |          |          |          |          | 7                          |
| MAZDA         | 9                          | 0            | 0            | 0            | 0            | 0            | 0            | 0            | 0             |          |          |          |          | 0                          |
| <b>TOPLAM</b> | <b>82.126</b>              | <b>4.316</b> | <b>6.129</b> | <b>9.691</b> | <b>8.844</b> | <b>7.344</b> | <b>7.920</b> | <b>9.356</b> | <b>10.526</b> | <b>0</b> | <b>0</b> | <b>0</b> | <b>0</b> | <b>64.126</b>              |