



OTOMOTİV SANAYİ DERNEĞİ  
AUTOMOTIVE MANUFACTURERS ASSOCIATION

# AYLIK RAPOR

## Automotive Industry Monthly Report

Ocak / January 2016

- **Üretim/Production**
- **Satış/Sales**
- **İthalat/Imports**
- **İhracat/Exports**

OSD "OICA" Üyesidir



OSD is a Member of "OICA"

## 2016 Ocak Ayı Özeti / 2016 January Summary

KONULAR/MATTERS		OCAK / JANUARY			SON 12 AYLIK / YoY		
		2015	2016	2016/2015 (%)	2015	2016	2016/2015 (%)
Üretim/Production	Toplam/Total	102.574	97.589	-5	1.197.977	1.353.811	13
	Otomobil/P.Cars	60.414	58.205	-4	741.847	788.818	6
Pazar/Market	Toplam/Total	36.576	33.730	-8	809.837	1.008.348	25
	Otomobil/P.Cars	24.498	23.348	-5	587.461	724.446	23
İthalat/Import	Toplam/Total	21.957	20.956	-5	523.841	657.689	26
	Otomobil/P.Cars	17.102	15.947	-7	428.876	536.560	25
İhracat/Export	Toplam/Total	79.288	68.800	-13	913.044	981.847	8
	Otomobil/P.Cars	48.533	38.621	-20	594.601	594.771	0
İhracat / export (\$)	Toplam/Total **	1.757.822.721	1.549.229.391	-12	22.921.329.315	21.128.215.248	-8
	Otomobil/P.Cars	579.896.543	376.135.135	-35	7.343.524.562	6.318.206.231	-14

PARAMETRELER / PARAMETERS		OCAK / JANUARY			SON 12 AYLIK / YoY		
		2015	2016	2016/2015 (%)	2015	2016	2016/2015 (%)
ÜFE/PPI		0,33	0,55	-	3,28	5,50	-
TÜFE/CPI		1,10	1,82	-	7,24	7,87	-
Sanayi Endeksi/Industry Index		0,19	0,56	-	4,40	6,15	-
\$ (*)		2,4159	2,9495	22	2,2030	2,7757	26
EURO (*)		2,7378	3,2182	18	2,8630	3,0580	7
Japon Yeni (*)		2,0412	2,4467	20	2,0404	2,2775	12

(\*) Ortalama Değerler / Average Values

(\*\*) Toplam Sanayi / Total Industry Including Components

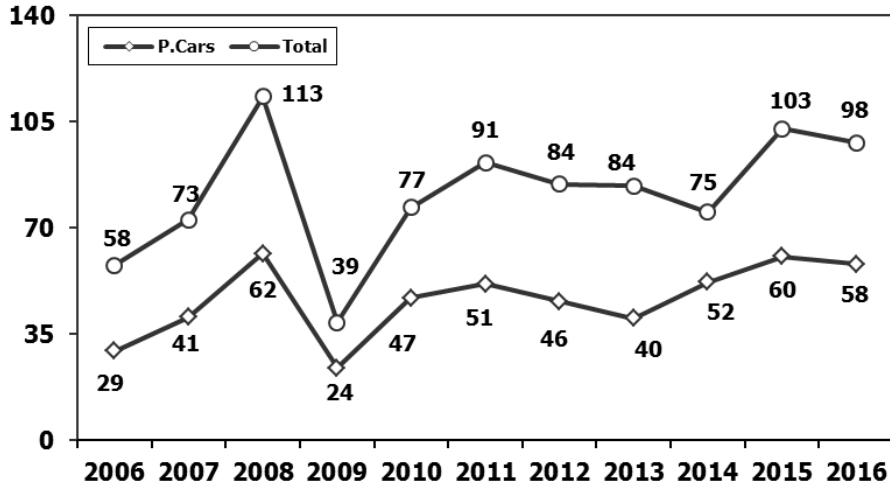
## 2015/2016 Yılları Üretim 2015/2016 Production

K.KAMYON : AYA 3.5-12 Ton (L.Truck:GVW 3.5-12 Ton)

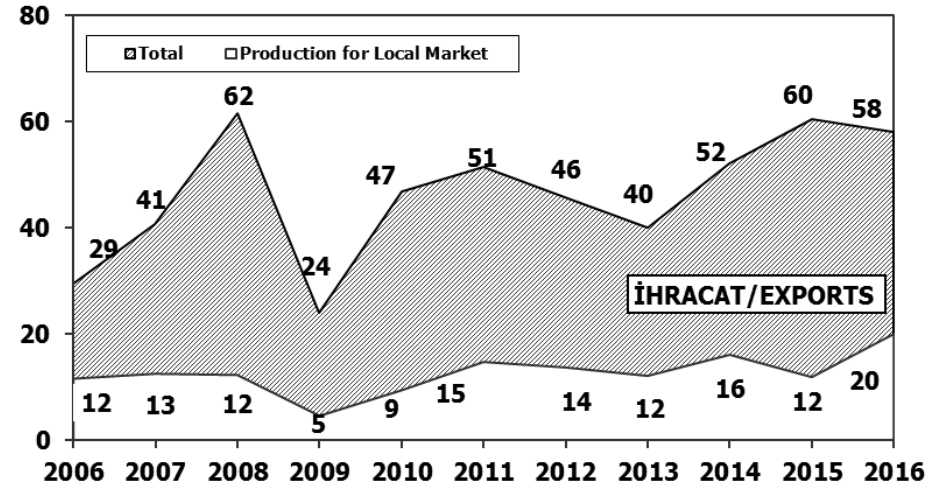
B.KAMYON : AYA 12 Ton'dan Büyük (M.Truck:GVW 12 Ton And Up)

TİPLER	OCAK AYI ÜRETİMİ January Production		DEĞİŞİM % Change %
	2015	2016	OCAK January
<b>OTOMOBİL - P.Car</b>	<b>60.414</b>	<b>58.205</b>	<b>-4</b>
<b>TİCARİ ARAÇLAR - Commercial Vehicles</b>	<b>42.160</b>	<b>39.384</b>	<b>-7</b>
* B. KAMYON - M. Truck	2.504	389	-84
* K. KAMYON - L. Truck	271	5	-98
* KAMYONET - Pick Up	34.292	36.937	8
* OTOBÜS - Bus	635	589	-7
* MİNİBÜS - Minibus	3.954	1.390	-65
* MİDİBÜS - Midibus	504	74	-85
<b>TAŞIT ARAÇLARI TOPLAM - MV Total</b>	<b>102.574</b>	<b>97.589</b>	<b>-5</b>
<b>TRAKTÖR - F.Tractor</b>	<b>3.604</b>	<b>4.027</b>	<b>12</b>
<b>GENEL TOPLAM - Grand Total</b>	<b>106.178</b>	<b>101.616</b>	<b>-4</b>

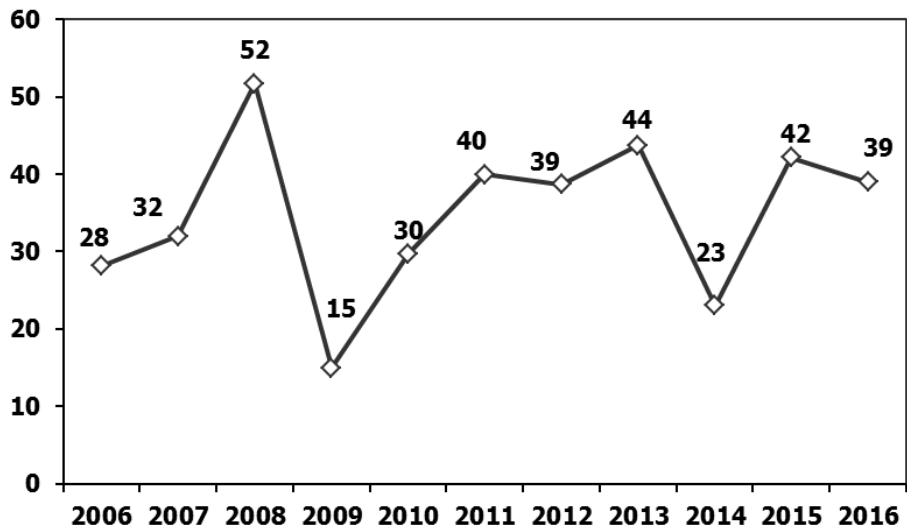
**Toplam Üretim ve Otomobil Üretimi** (x1000)  
Total & P.Cars Production (x1000)



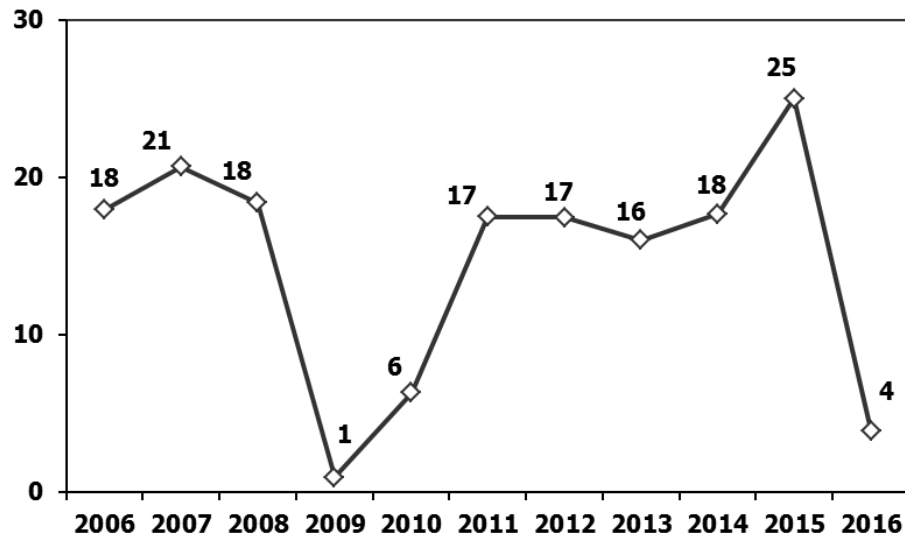
**Otomobil Üretimi ve İhracat** (x1000)  
P.Cars Production & Exports (x1000)



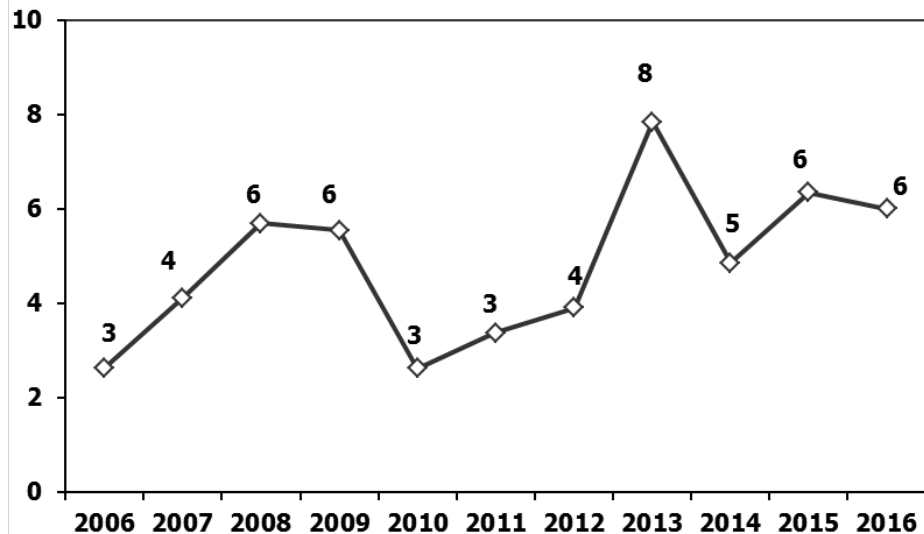
**Ticari Araç Üretimi** (x1000) (Ocak)  
Commercial Vehicle Production (x1000) (January)



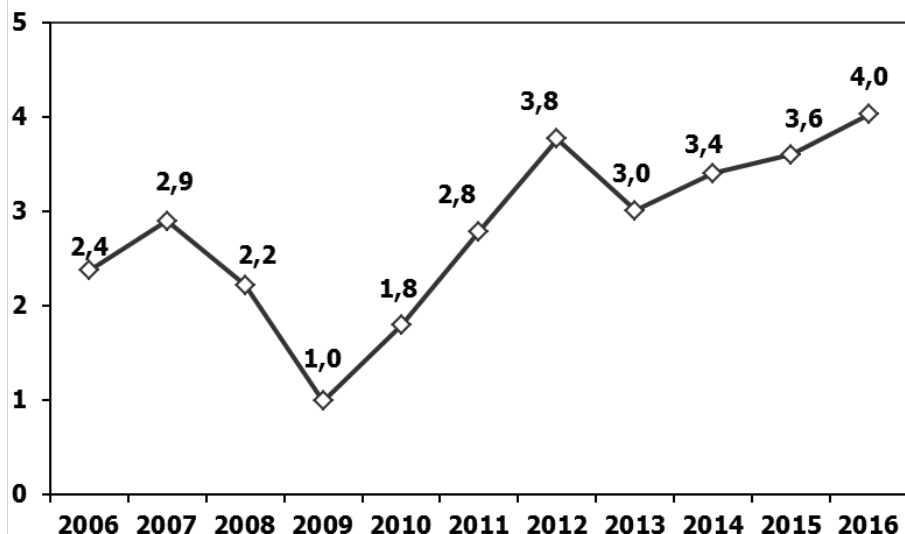
(AYA >12 Ton) **Büyük Kamyon Üretimi** (x100) (Ocak)  
(GVW >12 Ton) Heavy Truck Production (x100) (January)



**Otobüs Üretimi** (x100) (Ocak)  
Bus Production (x100) (January)

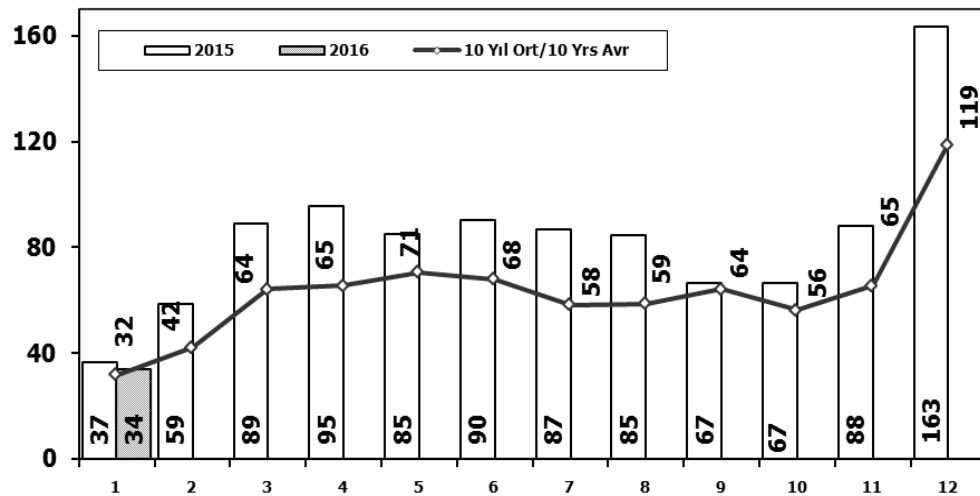


**Traktör Üretimi** (x1000) (Ocak)  
F. Tractor Production (x1000) (January)



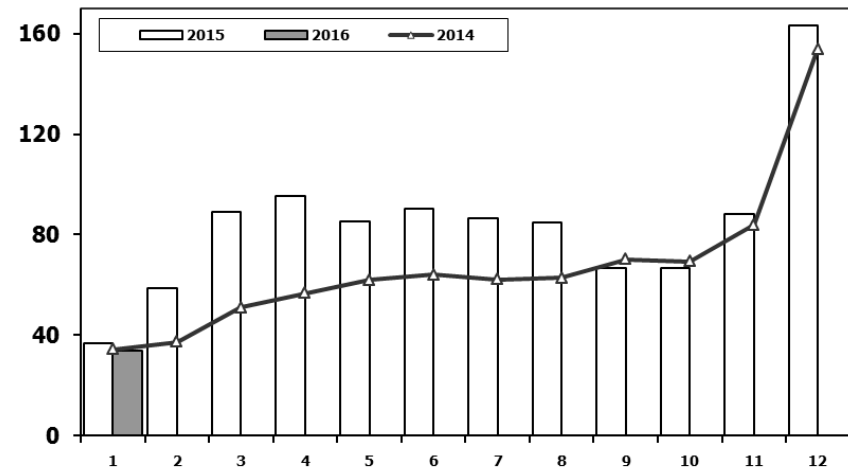
## Toplam Pazarın Analizi (x1000)

Total Market Analysis (x1000)



## Toplam Pazar (x1000)

Total Market (x1000)

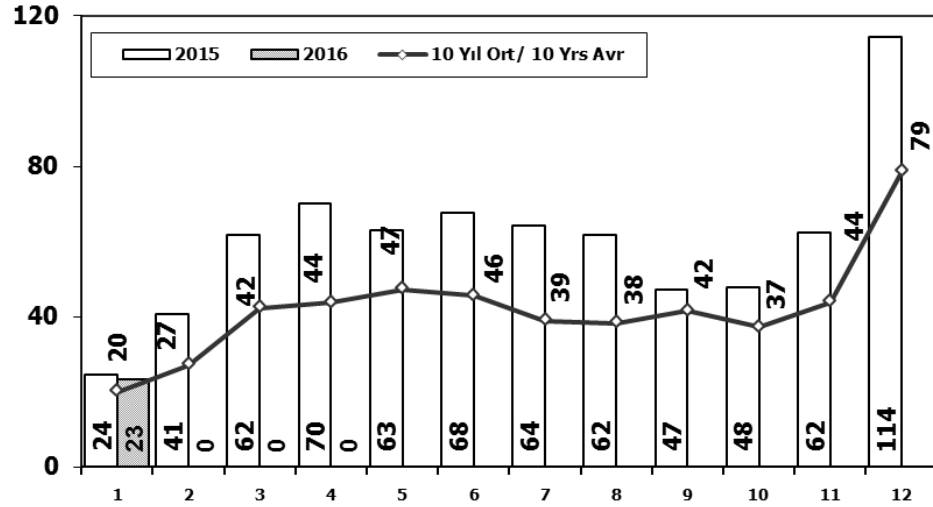


Aylar / Months	10 Yil Ort. 10 Yrs Avr. (x1000)	2016 (x1000)	%
1	31,7	33,7	6

	1	2	3	4	5	6	7	8	9	10	11	12	1 Ay/Mo	Total
2006	29.969	44.646	65.090	68.853	83.289	58.203	40.037	47.374	49.629	39.805	55.898	82.722	29.969	665.515
2007	24.950	31.702	45.488	45.633	51.255	51.661	50.117	54.171	50.078	56.058	67.017	106.076	24.950	634.206
2008	33.792	38.121	56.814	50.967	51.627	49.393	44.692	46.592	46.829	35.147	28.152	44.418	33.792	526.544
2009	20.631	22.846	56.531	54.426	64.887	63.102	30.246	37.092	83.403	22.117	29.202	91.386	20.631	575.869
2010	21.050	32.313	53.828	57.079	61.628	63.390	63.718	64.645	66.601	76.780	77.406	154.734	21.050	793.172
2011	47.658	62.348	83.333	82.071	85.093	85.863	65.364	61.378	63.643	72.640	67.195	134.281	47.658	910.867
2012	31.219	43.827	68.957	66.014	74.820	74.781	65.122	60.848	73.197	62.677	75.045	121.113	31.219	817.620
2013	37.140	50.931	72.688	77.015	85.421	77.771	74.726	67.383	71.037	60.399	83.017	135.596	37.140	893.124
2014	34.225	37.308	50.964	56.766	61.909	63.952	62.206	62.839	70.180	69.259	83.937	153.941	34.225	807.486
2015	36.576	58.533	89.121	95.431	85.145	90.463	86.625	84.683	66.622	66.520	88.043	163.432	36.576	1.011.194
2016	33.730	0	0	0	0	0	0	0	0	0	0	0	33.730	33.730

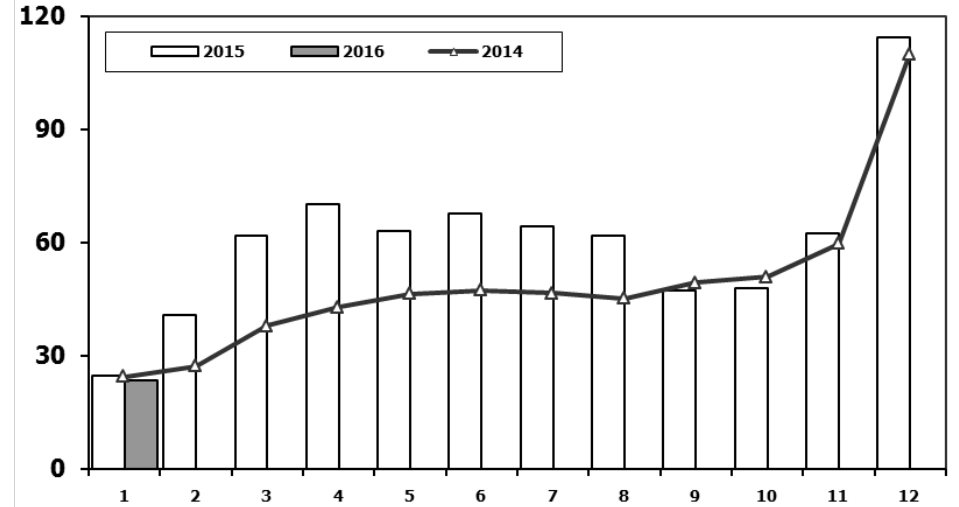
## Otomobil Pazarının Analizi (x1000)

P.Cars Market Analysis (x1000)



## Otomobil Pazarı (x1000)

P.Cars Market (x1000)

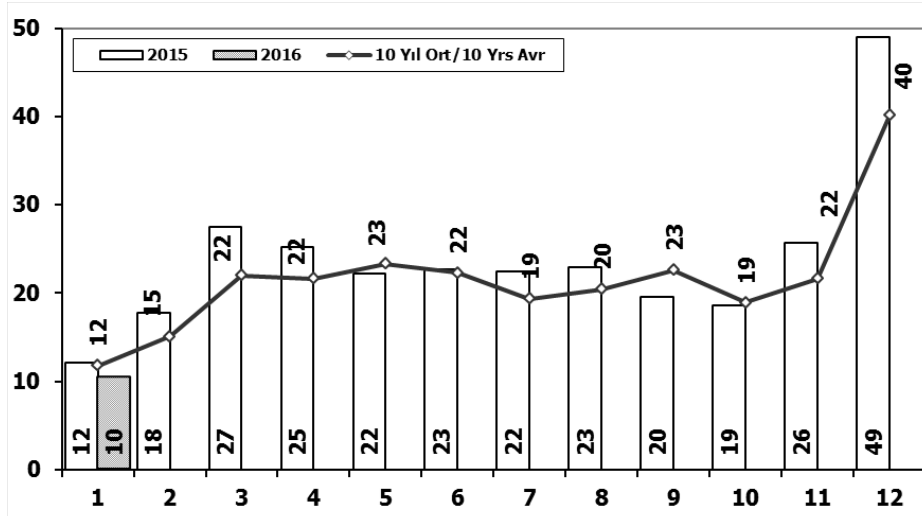


Aylar / Months	10 Yil Ort. 10 Yrs Avr. (x1000)	2016 (x1000)	%
1	20,7	23,3	13,0

	1	2	3	4	5	6	7	8	9	10	11	12	1 Ay/Mo	Total
2006	16.506	24.929	36.996	40.177	48.521	32.982	22.653	24.873	27.517	21.237	30.477	46.351	16.506	373.219
2007	13.186	17.212	24.336	25.204	29.067	30.126	28.246	28.469	27.662	32.569	39.643	61.745	13.186	357.465
2008	18.588	21.196	34.147	30.313	31.477	28.724	25.530	26.102	27.053	19.788	17.201	25.879	18.588	305.998
2009	13.173	14.492	40.622	36.202	44.188	41.019	16.637	22.537	52.162	13.828	17.781	57.178	13.173	369.819
2010	12.594	20.651	33.958	36.549	40.467	42.086	41.399	42.222	42.477	47.859	50.061	99.461	12.594	509.784
2011	29.868	39.004	54.023	53.835	56.302	56.714	43.518	38.875	39.964	47.508	44.951	88.957	29.868	593.519
2012	21.077	29.189	47.270	45.645	50.460	50.849	44.531	41.236	49.360	43.440	52.297	80.926	21.077	556.280
2013	25.835	36.814	51.785	56.999	62.383	58.290	55.712	51.611	52.925	46.985	64.117	101.199	25.835	664.655
2014	24.368	27.167	37.812	42.769	46.379	47.278	46.602	45.131	49.262	50.814	59.695	110.054	24.368	587.331
2015	24.498	40.817	61.676	70.211	62.878	67.766	64.218	61.753	47.088	47.954	62.397	114.340	24.498	725.596
2016	23.348	0	0	0	0	0	0	0	0	0	0	0	23.348	23.348

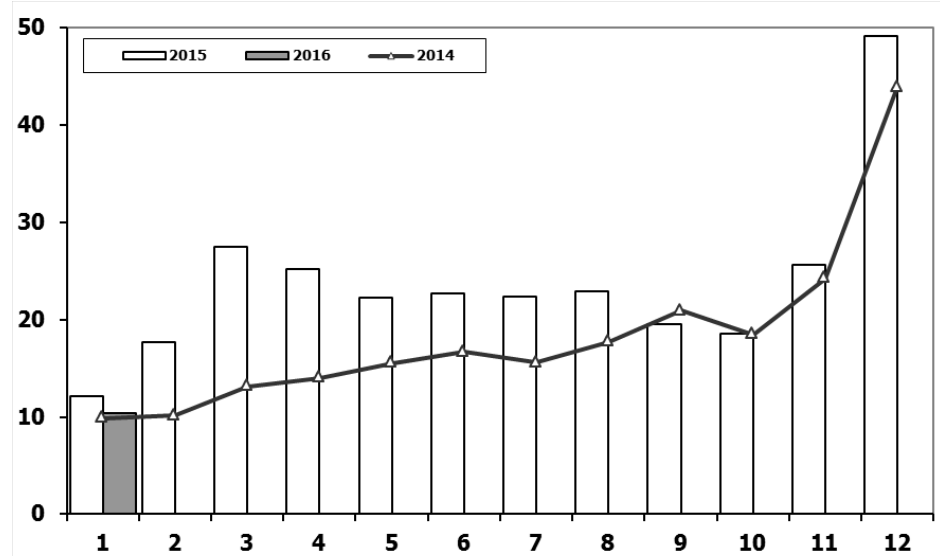
## Ticari Araç Pazarının Analizi (x1000)

### CV Market Analysis (x1000)



## Ticari Araç Pazarı (x1000)

### CV Total Market (Local + Imports) (x1000)

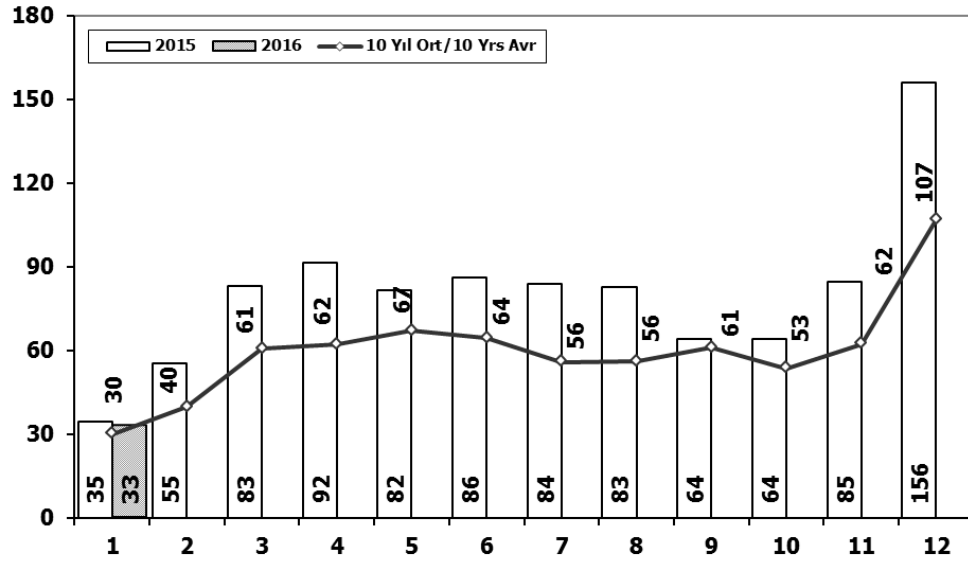


	1	2	3	4	5	6	7	8	9	10	11	12	1 Ay/Mo	Total
2006	13.463	19.717	28.094	28.676	34.768	25.221	17.384	22.501	22.112	18.568	25.421	36.371	13.463	292.296
2007	11.764	14.490	21.152	20.429	22.188	21.535	21.871	25.702	22.416	23.489	27.374	44.331	11.764	276.741
2008	15.204	16.925	22.667	20.654	20.150	20.669	19.162	20.490	19.776	15.359	10.951	18.539	15.204	220.546
2009	7.458	8.354	15.909	18.224	20.699	22.083	13.609	14.555	31.241	8.289	11.421	34.208	7.458	206.050
2010	8.456	11.662	19.870	20.530	21.161	21.304	22.319	22.423	24.124	28.921	27.345	55.273	8.456	283.388
2011	17.790	23.344	29.310	28.236	28.791	29.149	21.846	22.503	23.679	25.132	22.244	45.324	17.790	317.348
2012	10.142	14.638	21.687	20.369	24.360	23.932	20.591	19.612	23.837	19.237	22.748	40.187	10.142	261.340
2013	11.305	14.117	20.903	20.016	23.038	19.481	19.014	15.772	18.112	13.414	18.900	34.397	11.305	228.469
2014	9.857	10.141	13.152	13.997	15.530	16.674	15.604	17.708	20.918	18.445	24.242	43.887	9.857	220.155
2015	12.078	17.716	27.445	25.220	22.267	22.697	22.407	22.930	19.534	18.566	25.646	49.092	12.078	285.598
2016	10.382	0	0	0	0	0	0	0	0	0	0	0	10.382	10.382

Aylar / Months	10 Yil Ort. 10 Yrs Avr. (x1000)	2016 (x1000)	%
1	11,8	10,4	-12

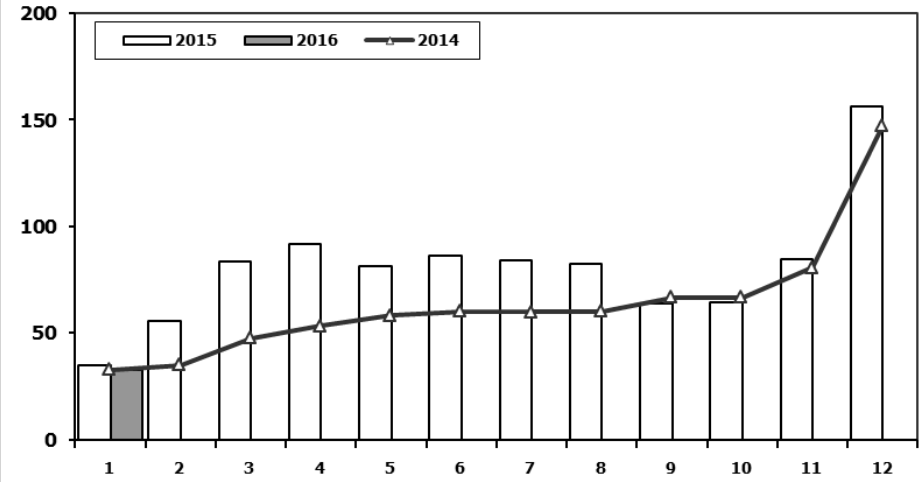
## Hafif Araç Pazarının Analizi (x1000)

LV Market Analysis (x1000)



## Hafif Araç Pazarı (x1000)

LV Total Market (Local + Imports) (x1000)



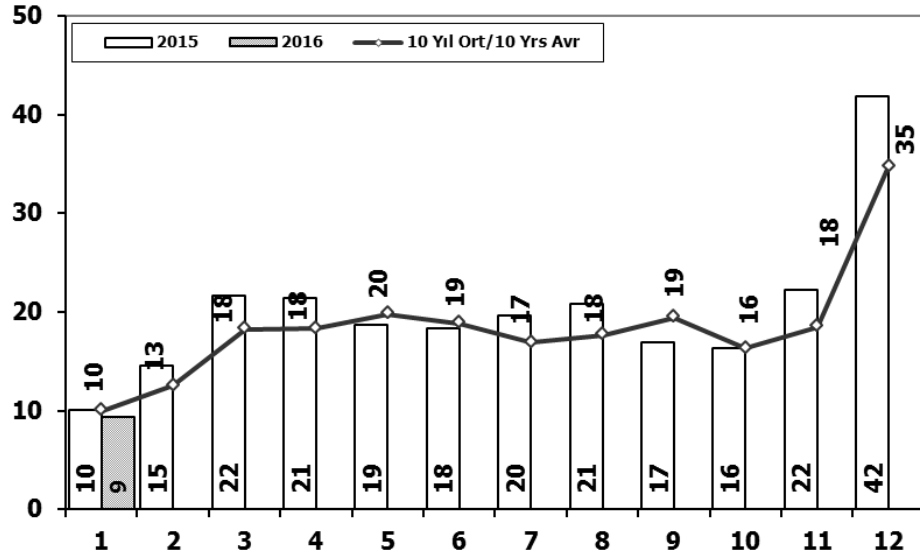
Aylar / Months	10 Yil Ort. 10 Yrs Avr. (x1000)	2016 (x1000)	%
1	30,0	32,7	9,2

	1	2	3	4	5	6	7	8	9	10	11	12	1 Ay/Mo	Total
2006	27.917	40.938	60.052	64.038	78.229	54.355	37.251	43.767	46.109	36.542	51.867	76.787	27.917	617.852
2007	23.117	29.184	41.890	42.366	47.938	48.674	47.490	50.558	46.581	52.725	63.313	100.926	23.117	594.762
2008	31.527	35.251	53.649	47.701	48.598	46.324	42.156	43.670	43.932	32.884	26.253	42.078	31.527	494.023
2009	19.606	21.742	55.111	52.640	63.191	61.067	28.845	35.609	81.397	21.033	27.962	88.923	19.606	557.126
2010	20.095	31.172	51.769	54.946	59.377	60.896	61.345	61.764	63.814	73.404	73.962	148.369	20.095	760.913
2011	44.892	58.663	78.403	77.695	80.646	81.573	63.044	58.406	60.129	69.421	63.657	127.910	44.892	864.439
2012	29.545	41.324	64.884	62.949	70.863	71.067	62.304	58.148	69.629	59.938	71.710	115.400	29.545	777.761
2013	35.523	48.307	68.774	73.575	81.468	74.096	71.596	65.043	67.963	58.014	79.301	129.718	35.523	853.378
2014	32.670	35.021	47.581	53.305	58.121	60.163	59.907	60.199	66.531	66.573	80.621	146.989	32.670	767.681
2015	34.615	55.331	83.302	91.602	81.542	86.158	83.836	82.577	64.025	64.255	84.601	156.173	34.615	968.017
2016	32.703	0	0	0	0	0	0	0	0	0	0	0	32.703	32.703



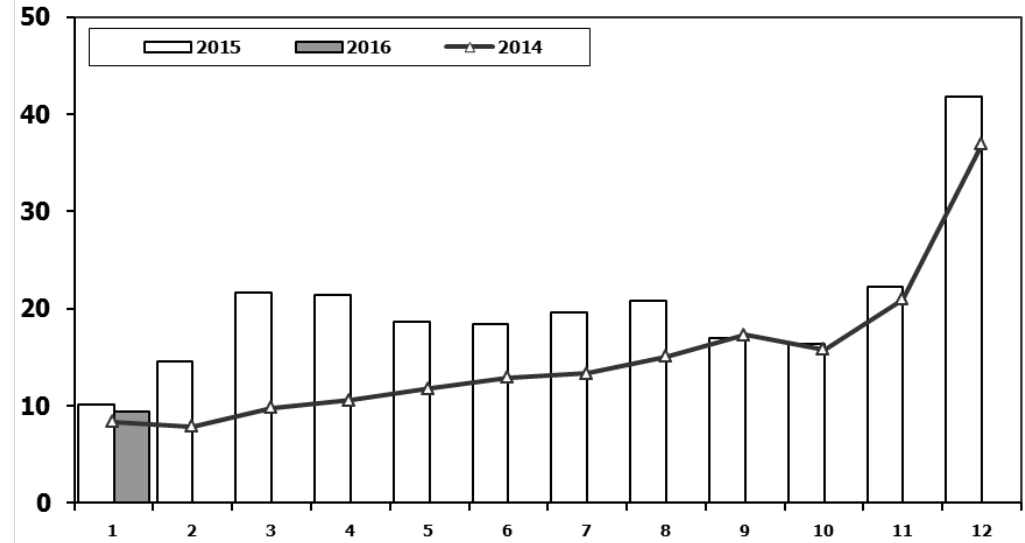
## Hafif Ticari Araç Pazarının Analizi (x1000)

LCV Market Analysis (x1000)



## Hafif Ticari Araç Pazarı (x1000)

LCV Total Market (Local + Imports) (x1000)

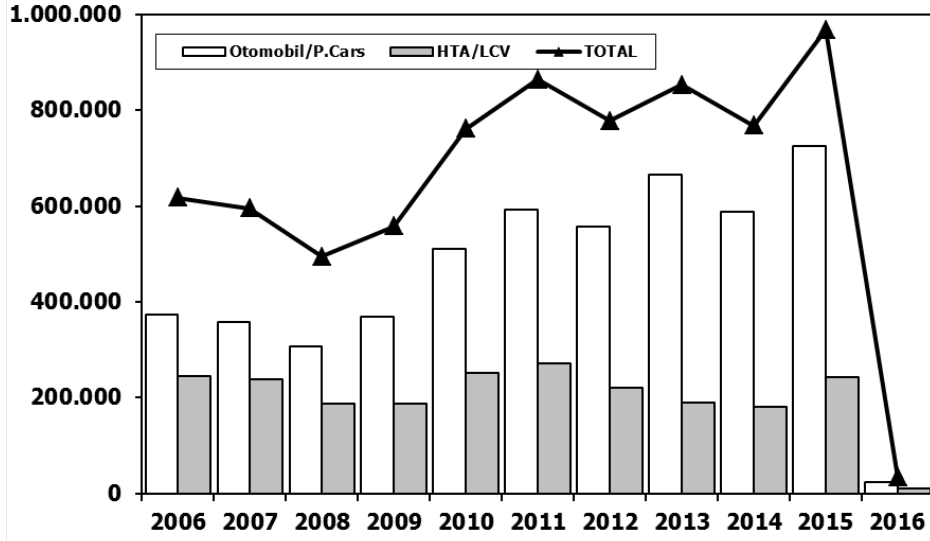


Aylar / Months	10 Yil Ort. 10 Yrs Avr. (x1000)	2016 (x1000)	%
1	10,0	9,4	-6,3

	1	2	3	4	5	6	7	8	9	10	11	12	1 Ay/Mo	Total
2006	11.411	16.009	23.056	23.861	29.708	21.373	14.598	18.894	18.592	15.305	21.390	30.436	11.411	244.633
2007	9.931	11.972	17.554	17.162	18.871	18.548	19.244	22.089	18.919	20.156	23.670	39.181	9.931	237.297
2008	12.939	14.055	19.502	17.388	17.121	17.600	16.626	17.568	16.879	13.096	9.052	16.199	12.939	188.025
2009	6.433	7.250	14.489	16.438	19.003	20.048	12.208	13.072	29.235	7.205	10.181	31.745	6.433	187.307
2010	7.501	10.521	17.811	18.397	18.910	18.810	19.946	19.542	21.337	25.545	23.901	48.908	7.501	251.129
2011	15.024	19.659	24.380	23.860	24.344	24.859	19.526	19.531	20.165	21.913	18.706	38.953	15.024	270.920
2012	8.468	12.135	17.614	17.304	20.403	20.218	17.773	16.912	20.269	16.498	19.413	34.474	8.468	221.481
2013	9.688	11.493	16.989	16.576	19.085	15.806	15.884	13.432	15.038	11.029	15.184	28.519	9.688	188.723
2014	8.302	7.854	9.769	10.536	11.742	12.885	13.305	15.068	17.269	15.759	20.926	36.935	8.302	180.350
2015	10.117	14.514	21.626	21.391	18.664	18.392	19.618	20.824	16.937	16.301	22.204	41.833	10.117	242.421
2016	9.355	0	0	0	0	0	0	0	0	0	0	0	9.355	9.355

## Hafif Araç Pazarı (AYA < 3.5 Ton)

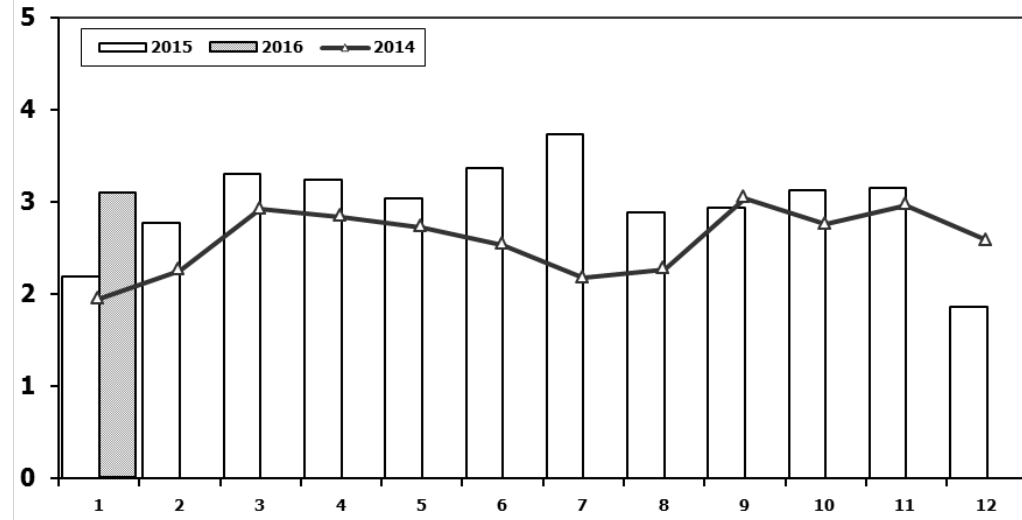
Light Vehicle Market (GVW < 3.5 Ton)



	2006	2007	2008	2009	2010	2011	2012	2013	2014	2015	2016
Otomobil/P.Cars	373.219	357.465	305.998	369.819	509.784	593.519	556.280	664.655	587.331	725.596	23.348
HTA/LCV	244.633	237.297	188.025	187.307	251.129	270.920	221.481	188.723	180.350	242.421	9.355
TOTAL	617.852	594.762	494.023	557.126	760.913	864.439	777.761	853.378	767.681	968.017	32.703
HTA/LCV (%)	40	40	38	34	33	31	28	22	23	25	29

## Traktör Pazarı (x1000)

F.Tractor Market (x1000)



	1	2	3	4	5	6	7	8	9	10	11	12	1 Ay/Mo	Total
2006	1.578	2.493	2.746	2.841	3.561	2.356	1.685	2.177	2.756	1.915	2.353	1.925	1.578	28.386
2007	1.812	1.778	2.063	2.107	2.266	1.853	1.653	2.065	2.372	2.239	2.231	1.602	1.812	24.041
2008	1.510	1.427	1.933	1.692	1.689	1.592	1.275	924	904	609	707	359	1.510	14.621
2009	267	344	388	638	759	828	741	534	586	765	725	715	267	7.290
2010	714	903	1.432	1.653	1.736	1.673	1.613	1.527	2.351	2.787	2.656	2.345	714	21.390
2011	2.458	2.610	3.105	3.403	3.847	3.599	2.952	1.559	2.957	2.823	2.603	2.807	2.458	34.723
2012	2.216	2.632	3.223	3.259	3.067	2.821	2.037	1.262	1.648	1.858	1.921	1.579	2.216	27.523
2013	1.633	1.817	2.196	2.070	2.455	2.370	1.955	1.969	2.396	2.510	2.343	2.080	1.633	25.794
2014	1.941	2.256	2.915	2.837	2.723	2.534	2.171	2.265	3.039	2.755	2.964	2.573	1.941	30.973
2015	2.187	2.767	3.297	3.235	3.039	3.366	3.730	2.883	2.927	3.122	3.152	1.861	2.187	2.187
2016	3.093	0	0	0	0	0	0	0	0	0	0	0	3.093	3.093

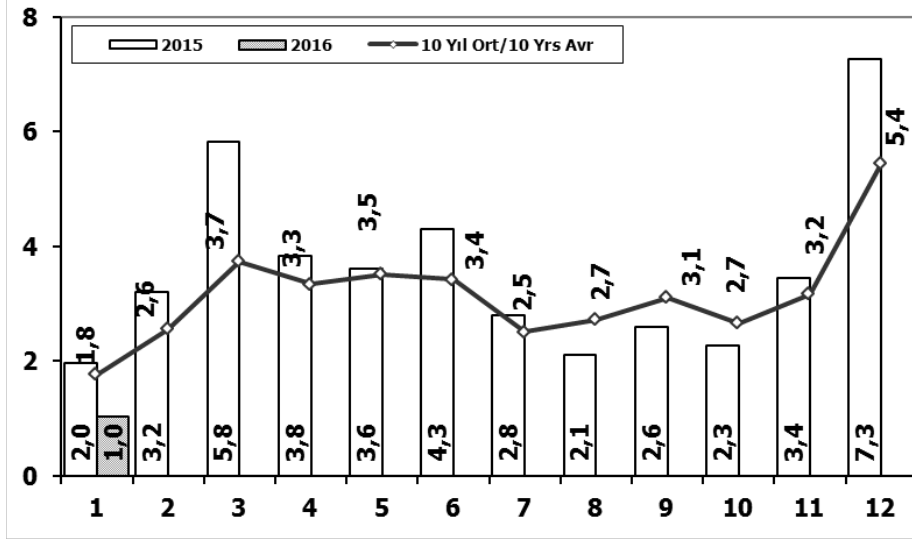






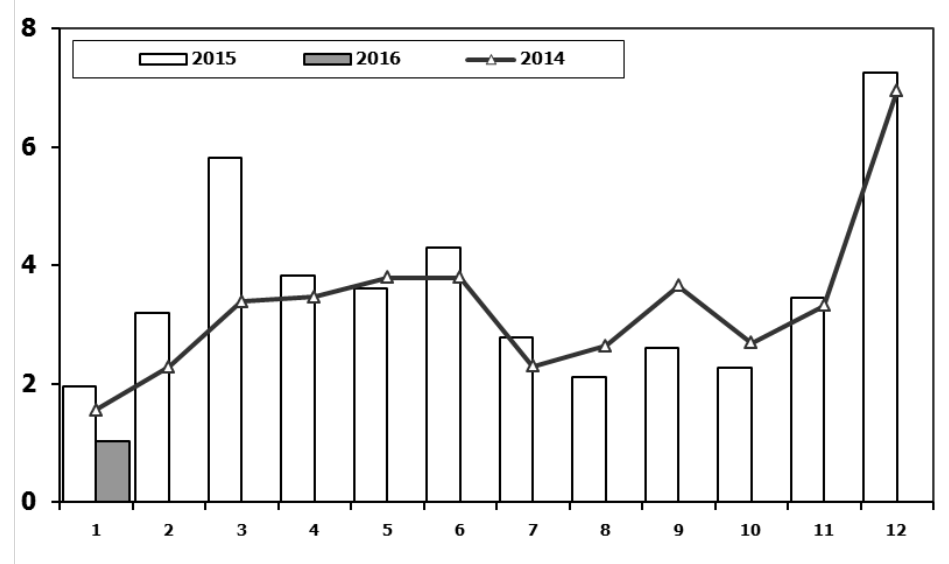
## Ağır Ticari Araç Pazarının Analizi (x1000)

### HCV Market Analysis (x1000)



## Ağır Ticari Araç Pazarı (x1000)

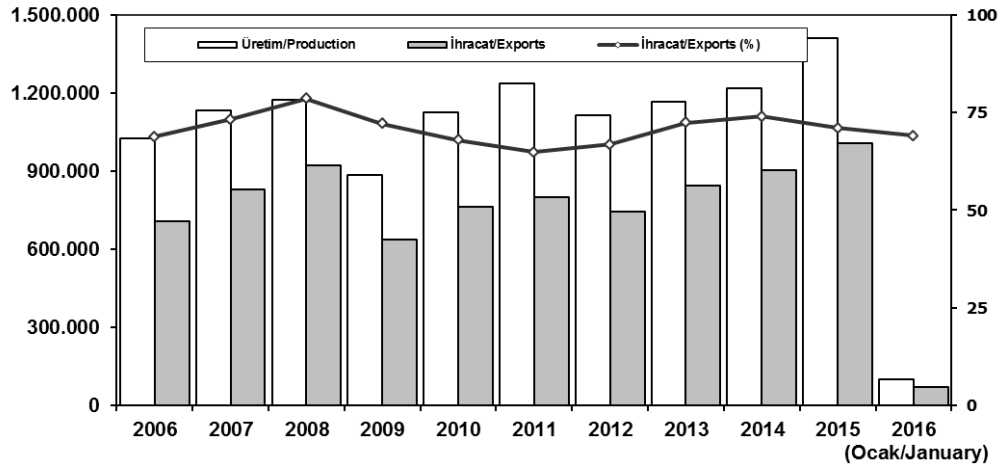
### HCV Market (x1000)



Aylar / Months	10 Yil Ort. 10 Yrs Avr. (x1000)	2016 (x1000)	%
1	1,8	1,0	-42,0

	1	2	3	4	5	6	7	8	9	10	11	12	1 Ay/Mo	Total
2006	2.052	3.708	5.038	4.815	5.060	3.848	2.786	3.607	3.520	3.263	4.031	5.935	2.052	47.663
2007	1.833	2.518	3.598	3.267	3.317	2.987	2.627	3.613	3.497	3.333	3.704	5.150	1.833	39.444
2008	2.265	2.870	3.165	3.266	3.029	3.069	2.536	2.922	2.897	2.263	1.899	2.340	2.265	32.521
2009	1.025	1.104	1.420	1.786	1.696	2.035	1.401	1.483	2.006	1.084	1.240	2.463	1.025	18.743
2010	955	1.141	2.059	2.133	2.251	2.494	2.373	2.881	2.787	3.376	3.444	6.365	955	32.259
2011	2.766	3.685	4.930	4.376	4.447	4.290	2.320	2.972	3.514	3.219	3.538	6.371	2.766	46.428
2012	1.674	2.503	4.073	3.065	3.957	3.714	2.818	2.700	3.568	2.739	3.335	5.713	1.674	39.859
2013	1.617	2.624	3.914	3.440	3.953	3.675	3.130	2.340	3.074	2.385	3.716	5.878	1.617	39.746
2014	1.555	2.287	3.383	3.461	3.788	3.789	2.299	2.640	3.649	2.686	3.316	6.952	1.555	39.805
2015	1.961	3.202	5.819	3.829	3.603	4.305	2.789	2.106	2.597	2.265	3.442	7.259	1.961	43.177
2016	1.027	0	0	0	0	0	0	0	0	0	0	0	1.027	1.027

## İhracat/Üretim (Traktör dahil) Exports/Production (Including F. Tractor)



	2006	2007	2008	2009	2010	2011	2012	2013	2014	2015	2016 (Ocak/January)
Üretim/Production	1.026.427	1.132.951	1.171.917	884.466	1.124.982	1.234.637	1.115.233	1.166.043	1.218.848	1.410.034	101.616
İhracat/Exports	706.402	829.879	920.763	637.855	763.670	801.112	745.354	843.467	902.194	1.007.267	70.140
İhracat/Exports (%)	69	73	79	72	68	65	67	72	74	71	69

## Taşıt Araçları İhracatı Motor Vehicle Exports

SEKTÖR/SECTOR	2014	2015	2015	2016	2016/2015 (%)
			1 Ay-1 Mo		
OTOMOBİL/ P.Cars	581.993	604.683	48.533	38.621	-20
TİCARİ ARAÇLAR / CV	303.187	387.652	30.755	30.179	-2
* Kamyonet/Pick-Up	269.995	341.834	26.679	28.779	8
* Minibüs/Minibus	26.458	38.255	3.642	723	-80
* Kamyon/Truck	1.281	1.408	88	158	80
* Midibüs/Midibus	824	447	31	37	19
* Otobüs/Bus	4.629	5.708	315	482	53
<b>TAŞIT ARAÇLARI / MV TOTAL</b>	<b>885.180</b>	<b>992.335</b>	<b>79.288</b>	<b>68.800</b>	<b>-13</b>
TRAKTÖR/F.TRACTOR	17.014	14.932	1.342	1.340	0
<b>TOTAL</b>	<b>902.194</b>	<b>1.007.267</b>	<b>80.630</b>	<b>70.140</b>	<b>-13</b>

## Otomotiv Ana ve Yan Sanayii İhracatı (ABD \$) CBU and CKD Exports - \$

Sektör / Sector	2012	2013	2014	2015	2015	2016	2016/2015 (%)
					Ocak (January)		
<b>Toplam Yan Sanayi/Total Component Industry</b>	<b>8.215.636.677</b>	<b>9.065.017.539</b>	<b>9.504.013.791</b>	<b>8.643.538.318</b>	<b>702.656.972</b>	<b>668.912.294</b>	<b>-5%</b>
İç ve Dış Lastik / Tyres	1.199.566.307,01	1.130.005.891,78	1.126.709.610,14	961.494.045	74.857.337	61.736.944	-18%
Emniyet Camı / Safety Glasses	120.615.917,59	135.230.309,67	143.208.298,99	124.569.031	11.004.816	10.664.582	-3%
Motor (Engine)	272.085.582,31	319.294.885,46	171.893.752,32	221.897.271	10.755.427	21.688.881	102%
Akümülatör / Batteries	249.831.846,25	306.451.449,47	289.101.198,21	220.618.374	20.777.264	16.178.847	-22%
Diğer Aksam ve Parça / Spare Parts&Components	6.373.537.023,45	7.174.035.002,35	7.773.100.931,83	7.114.959.599	585.262.128	558.643.041	-5%
<b>Toplam Ana Sanayi/Total Vehicle Industry</b>	<b>11.100.115.134</b>	<b>12.491.591.365</b>	<b>13.259.499.977</b>	<b>12.975.346.180</b>	<b>1.030.605.291</b>	<b>849.301.251</b>	<b>-18%</b>
Otobüs / Bus	855.424.303,62	937.790.962,87	985.983.007,01	1.024.134.143	56.594.788	79.472.332	40%
Midibüs-Minibüs / Minibus- Minibus	161.806.275,12	147.769.644,17	97.685.509,12	130.195.838	12.375.103	11.564.695	-7%
Otomobil (P. Cars)	6.068.045.119,19	6.855.475.589,83	7.258.361.005,24	6.881.972.133	579.896.543	376.135.135	-35%
Kamyon-Kamyonet/HCV-LCV	3.433.310.998,81	3.918.798.755,31	4.201.760.813,55	4.263.767.944	356.603.851	347.280.548	-3%
Çekici/Truck-Tractor	195.093.508,21	218.385.731,69	252.354.014,20	252.432.565	25.135.006	34.848.540	39%
Römork ve Yan Römork/Trailer-Semi Trailer	71.336.634,88	77.907.406,95	38.396.524,81	48.108.959	5.111.385	9.628.429	88%
Tarım Traktörü/Farm Tractor	315.098.293,75	335.463.274,61	424.959.103,39	374.734.597	19.449.073	21.387.418	10%
<b>Toplam/Total</b>	<b>19.315.751.810</b>	<b>21.556.608.904</b>	<b>22.763.513.769</b>	<b>21.618.884.498</b>	<b>1.733.262.263</b>	<b>1.518.213.545</b>	<b>-12%</b>

Kaynak: T.C Ekonomi Bakanlığı UİB Otomotiv Endüstrisi İhracatçıları Birliği

### Firma Bazında İhracat (Adet)

Export Of member Companies (Unit)

FİRMALAR Companies	2014	2015	Ocak January	
			2015	2016
FORD OTOSAN	187.921	252.571	20.491	21.013
HYUNDAI ASSAN	179.793	201.276	13.650	18.350
TOFAŞ	142.234	173.743	13.832	14.658
OYAK RENAULT	257.992	270.299	21.671	9.605
TOYOTA	109.517	81.962	9.212	4.291
TÜRK TRAKTÖR	15.866	14.122	1.309	1.307
M. BENZ TÜRK	3.438	4.252	285	462
HONDA TÜRKİYE	1.560	2.220	0	149
MAN TÜRKİYE	937	1.493	107	131
KARSAN	37	3.067	16	70
HATTAT TARIM	1.148	810	33	33
TEMSA GLOBAL	423	441	0	33
OTOKAR	580	720	15	24
A.I.O.S.	748	291	9	14
<b>GENEL TOPLAM</b>	<b>902.194</b>	<b>1.007.267</b>	<b>80.630</b>	<b>70.140</b>

Kaynak: OSD

### Sektör Bazında İhracat (\$)

Exports on Sectorial Basis

SEKTÖRLER	OCAK				SON 12 AYLIK			
	2015	2016	Değişim ('16/'15)	Pay(16) (%)	2015	2016	Değişim ('16/'15)	Pay(16) (%)
Otomotiv Endüstrisi	1.728.186	1.515.479	-12	16	22.412.099	20.940.648	-7	15
Hazırgiyim ve Konfeksiyon	1.383.372	1.339.926	-3	15	18.525.953	16.921.208	-9	12
Kimyevi Maddeler ve Mamulleri	1.197.775	1.002.484	-16	11	17.542.619	15.207.954	-13	11
Elektrik Elektronik ve Hizmet	732.034	632.636	-14	7	11.934.335	10.379.748	-13	7
Çelik	851.960	628.178	-26	7	12.950.170	9.661.172	-25	7
Tekstil ve Hammaddeleri	648.202	597.955	-8	6	8.765.339	7.905.534	-10	6
Demir ve Demir Dışı Metaller	487.407	425.071	-13	5	6.998.522	6.169.644	-12	4
Hububat, Bakliyat, Yağlı Tohumlar ve Mam.	566.121	461.428	-18	5	6.666.874	6.026.133	-10	4
Makine ve Aksamları	465.746	377.066	-19	4	6.029.046	5.438.116	-10	4
Mobilya, Kağıt ve Orman Ürünleri	316.524	272.737	-14	3	4.473.381	4.032.255	-10	3
<b>T O P L A M (TİM+TÜİK*)</b>	<b>10.756.831</b>	<b>9.208.150</b>	<b>-14</b>	<b>100</b>	<b>155.967.227</b>	<b>140.635.260</b>	<b>-10</b>	<b>100</b>

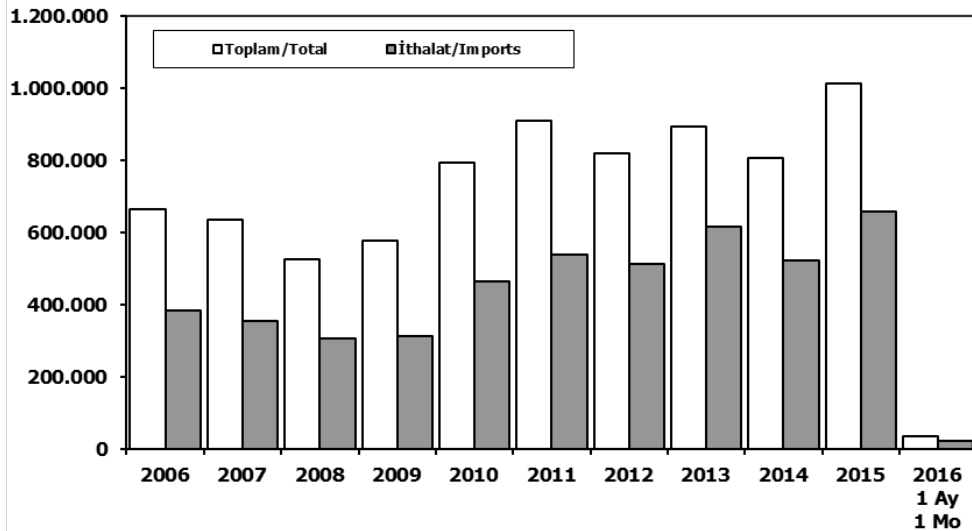
Kaynak: TİM

*First 3 Sectors:*

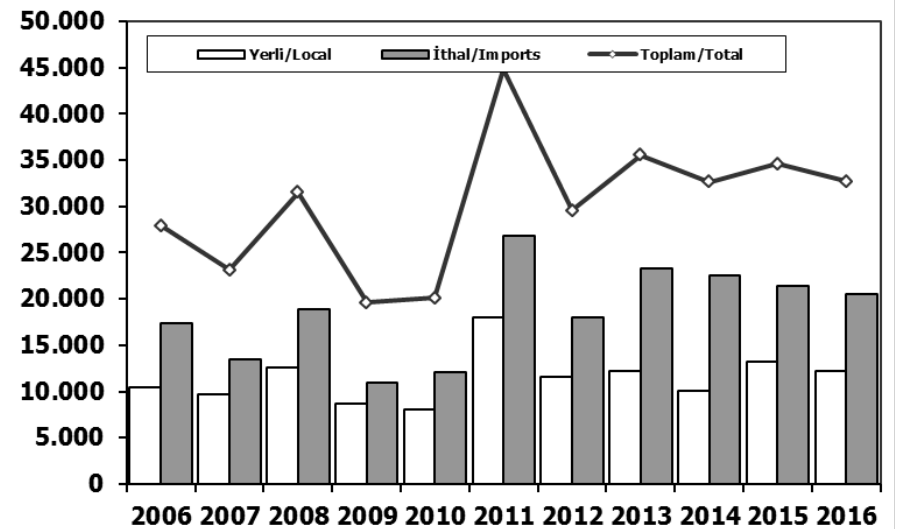
- 1- Transport Vehicle and Component Industry
- 2- Ready Wear and Confection
- 3- Chemical Articles and Products



## Toplam Pazar (Otomobil+T.Araç) Total Market (P.Cars+C.V)



## Hafif Araçlar Pazarı (2006-2016 Ocak) LV Market (2006-2016 January)

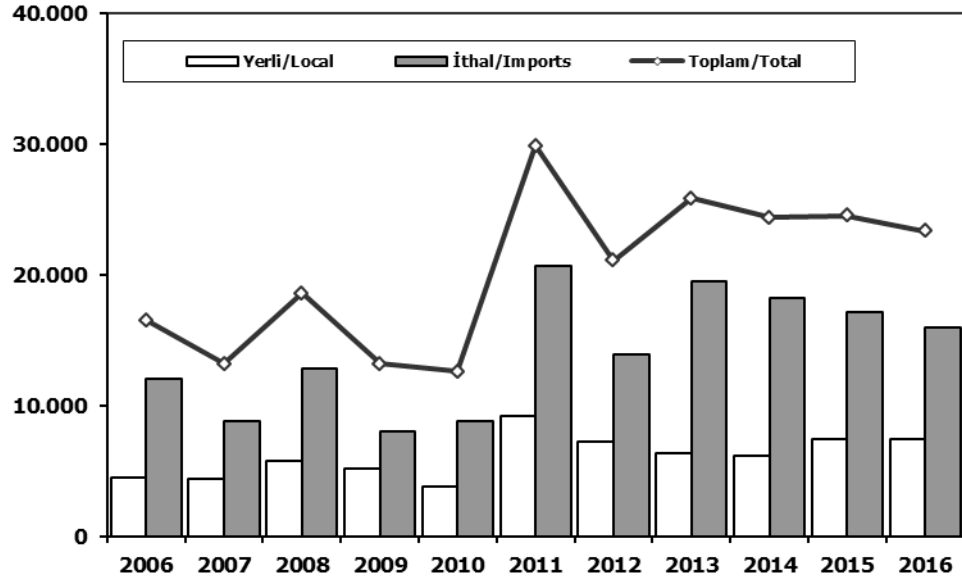


	2006	2007	2008	2009	2010	2011	2012	2013	2014	2015	2015 1 Ay 1 Mo	2016 1 Ay 1 Mo
<b>Toplam/Total</b>	665.515	634.206	526.544	575.869	793.172	910.867	817.620	893.124	807.486	1.011.194	36.576	33.730
<b>İthalat/Imports</b>	382.460	355.752	306.087	313.921	465.408	538.532	511.694	615.609	522.842	658.690	21.957	20.956
<b>İthalat/Imports (%)</b>	57	56	58	55	59	59	63	69	65	65	60	62

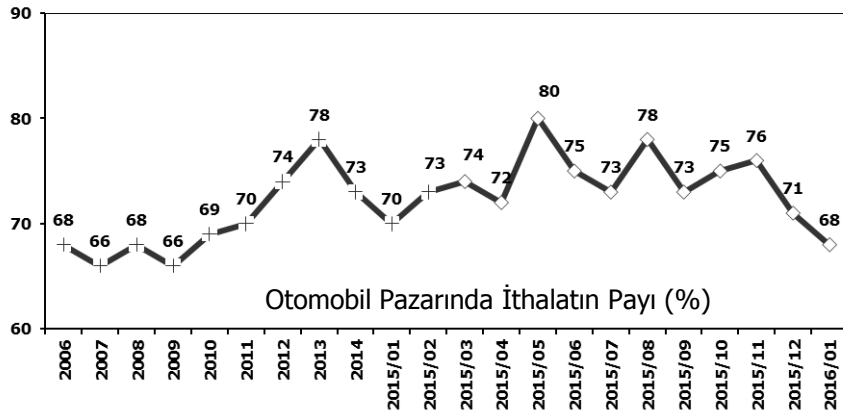
	2006	2007	2008	2009	2010	2011	2012	2013	2014	2015	2016
<b>Yerli/Local</b>	10.496	9.710	12.593	8.719	8.005	18.023	11.570	12.216	10.106	13.173	12.216
<b>İthal/Imports</b>	17.421	13.407	18.934	10.887	12.090	26.869	17.975	23.307	22.564	21.442	20.487
<b>Toplam/Total</b>	27.917	23.117	31.527	19.606	20.095	44.892	29.545	35.523	32.670	34.615	32.703
<b>İthalat/Imports (%)</b>	62	58	60	56	60	60	61	66	69	62	63

## Otomobil Pazarı (2006-2016 Ocak)

### P.Cars Market (2006-2016 January)

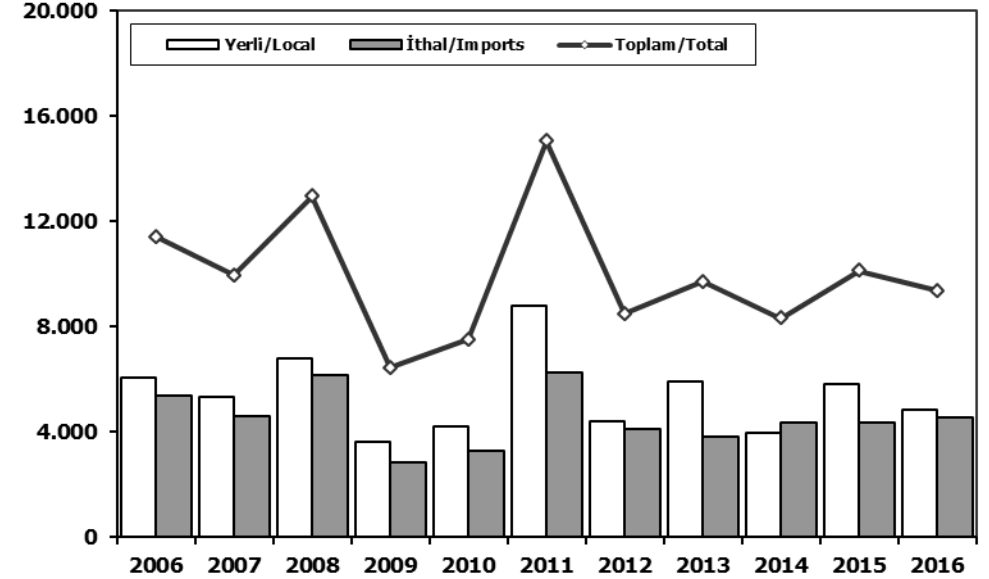


	2006	2007	2008	2009	2010	2011	2012	2013	2014	2015	2016
Yerli/Local	4.434	4.381	5.792	5.129	3.789	9.237	7.190	6.326	6.160	7.396	7.401
İthal/Imports	12.072	8.805	12.796	8.044	8.805	20.631	13.887	19.509	18.208	17.102	15.947
Toplam/Total	16.506	13.186	18.588	13.173	12.594	29.868	21.077	25.835	24.368	24.498	23.348
İthalat/Imports (%)	73	67	69	61	70	69	66	76	75	70	68

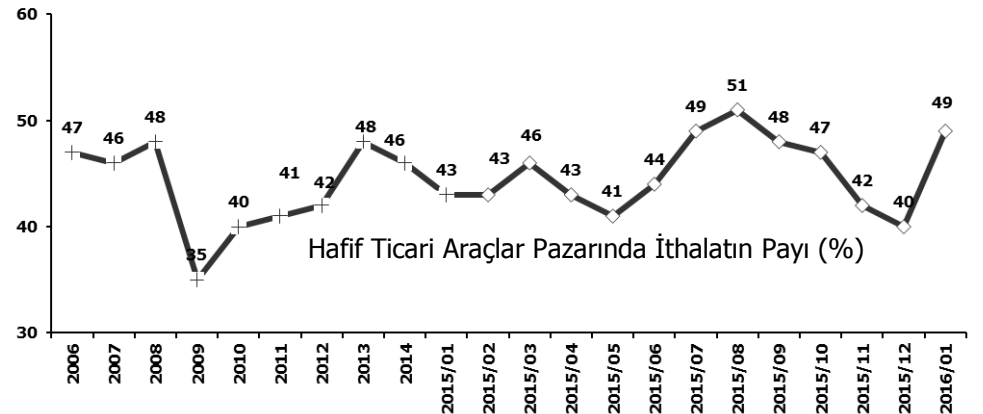


## Hafif Ticari Araçlar Pazarı (2006-2016 Ocak)

### Light Commercial Vehicle Market (2006-2016 January)

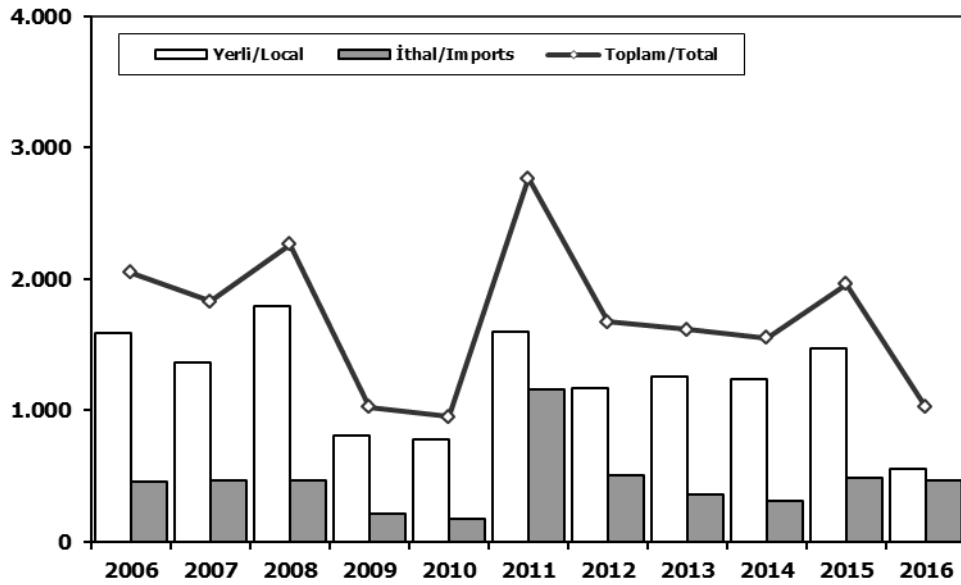


	2006	2007	2008	2009	2010	2011	2012	2013	2014	2015	2016
Yerli/Local	6.062	5.329	6.801	3.590	4.216	8.786	4.380	5.890	3.946	5.777	4.815
İthal/Imports	5.349	4.602	6.138	2.843	3.285	6.238	4.088	3.798	4.356	4.340	4.540
Toplam/Total	11.411	9.931	12.939	6.433	7.501	15.024	8.468	9.688	8.302	10.117	9.355
İthalat/Imports (%)	47	46	47	44	44	42	48	39	52	43	49



## Ağır Ticari Araçlar Pazarı (2006-2016 Ocak)

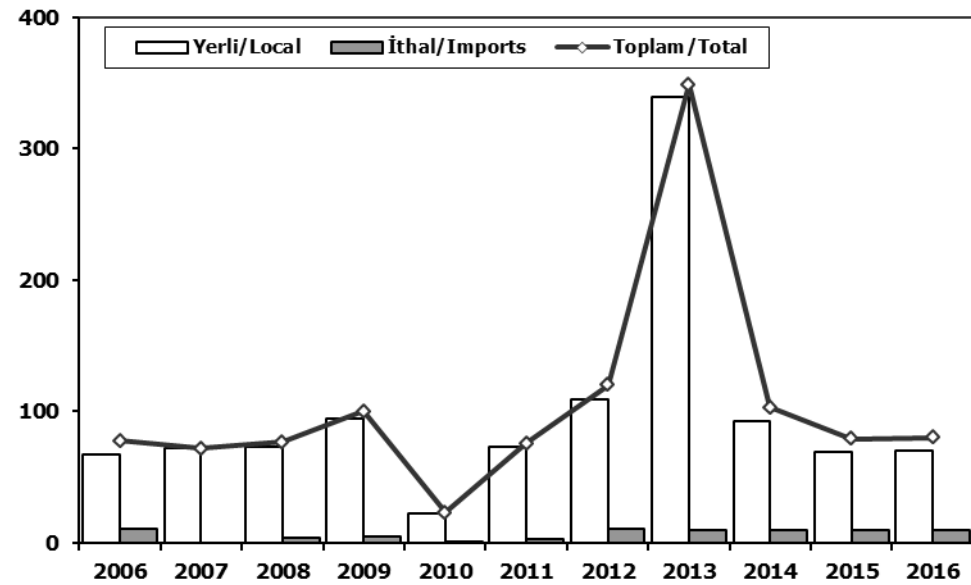
### HCV Market (2006-2016 January)



	2006	2007	2008	2009	2010	2011	2012	2013	2014	2015	2016
Yerli/Local	1.593	1.368	1.794	812	781	1.602	1.168	1.258	1.241	1.446	558
İthal/Imports	459	465	471	213	174	1.164	506	359	314	515	469
Toplam/Total	2.052	1.833	2.265	1.025	955	2.766	1.674	1.617	1.555	1.961	1.027
İthalat/Imports (%)	22	25	21	21	18	42	30	22	20	25	46

## Otobüs Pazarı (2006-2016 Ocak)

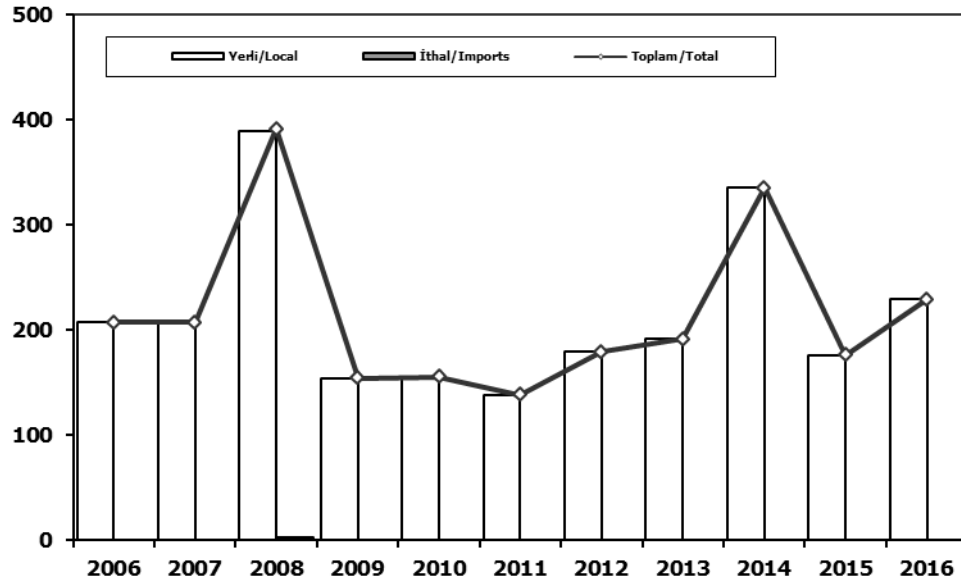
### Bus Market (2006-2016 January)



	2006	2007	2008	2009	2010	2011	2012	2013	2014	2015	2016
Yerli/Local	67	72	73	95	22	73	109	339	93	69	70
İthal/Imports	11	0	4	5	1	3	11	10	10	10	10
Toplam/Total	78	72	77	100	23	76	120	349	103	79	80
İthalat/Imports (%)	14	0	5	5	4	4	9	3	10	13	13

## Midibüs Pazarı (2006-2016 Ocak) (7-9 mt/25-35 Kişilik)

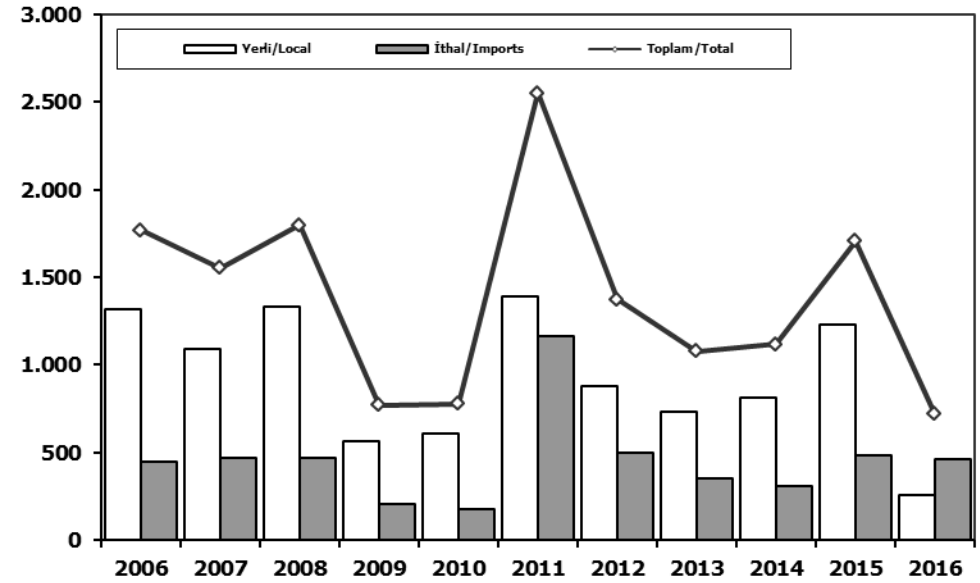
### Midibus (2006-2016 January) Market (7-9 mt/25-35 Passengers)



	2006	2007	2008	2009	2010	2011	2012	2013	2014	2015	2016
Yerli/Local	207	207	389	154	155	138	179	191	335	177	229
İthal/Imports	0	0	2	0	0	0	0	0	0	0	0
Toplam/Total	207	207	391	154	155	138	179	191	335	177	229
İthalat/Imports (%)	0	0	1	0	0	0	0	0	0	0	0

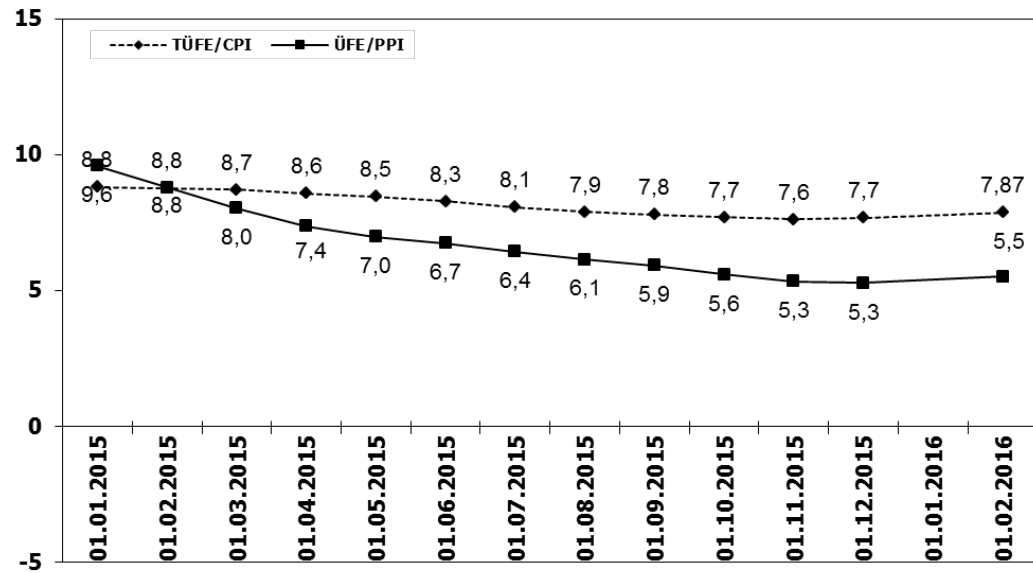
## Kamyon Pazarı (2006-2016 Ocak)

### Truck Market (2006-2016 January)

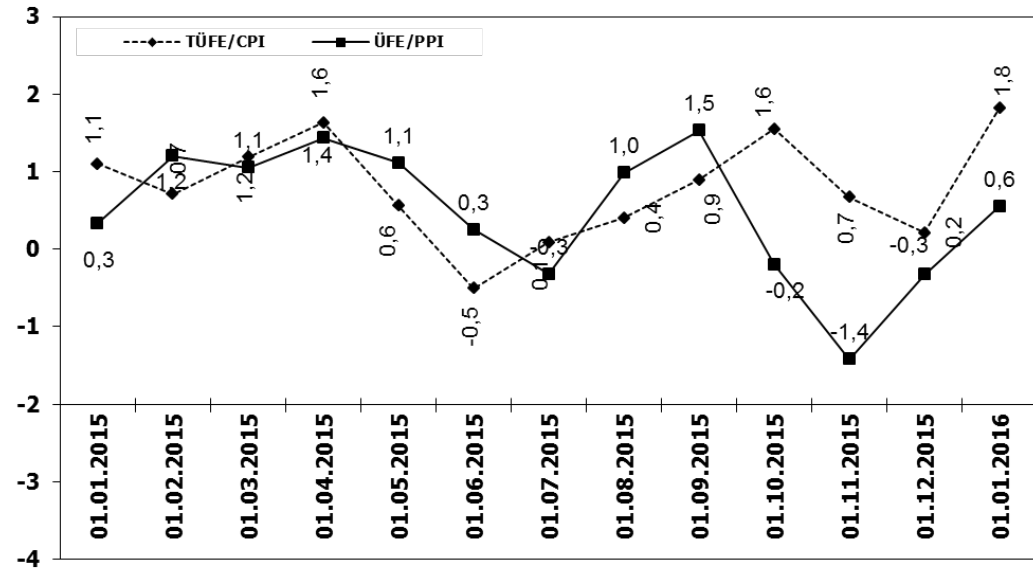


	2006	2007	2008	2009	2010	2011	2012	2013	2014	2015	2016
Yerli/Local	1.319	1.089	1.332	563	604	1.391	880	728	813	1.200	259
İthal/Imports	448	465	465	208	173	1.161	495	349	304	505	459
Toplam/Total	1.767	1.554	1.797	771	777	2.552	1.375	1.077	1.117	1.705	718
İthalat/Imports (%)	25	30	26	27	22	45	36	32	27	28	64

## TÜFE ve ÜFE'nin Yıllık Değişimi (%) CPI and PPI Yearly Changes (%)



## TÜFE ve ÜFE'nin Aylık Değişimi (%) CPI and PPI Monthly Changes (%)





## 2016 Yılı İthal Hafif Araç Satışları 2016 Light Vehicles Import Sales

	2015 TOPLAMI 2015 Total	1	2	3	4	5	6	7	8	9	10	11	12	2016 TOPLAMI 2016 Total
VOLKSWAGEN	107.401	2.792												2.792
OPEL	47.000	1.263												1.263
FORD	43.341	972												972
DACIA	37.257	1.235												1.235
RENAULT	32.683	1.258												1.258
B.M.W	31.221	496												496
MERCEDES BENZ	30.333	1.091												1.091
NISSAN	26.421	971												971
HYUNDAI	25.164	1.148												1.148
PEUGEOT	22.808	540												540
SKODA	22.107	715												715
AUDI	20.279	911												911
SEAT	18.911	502												502
CITROEN	16.520	394												394
KIA	13.873	263												263
TOYOTA	10.949	123												123
VOLVO	6.939	187												187
HONDA	5.413	366												366
FIAT	5.241	162												162
JEEP	3.507	92												92
MAZDA	1.761	50												50
MINI (İngiliz)	1.739	101												101
SUBARU	1.737	73												73
LAND ROVER	1.577	46												46
MITSUBISHI	1.366	39												39
PORSCHE	861	55												55
ALFA ROMEO	847	12												12
SSANGYONG	605	19												19
PROTON	500	10												10
CHERY	394	30												30
JAGUAR	336	20												20
SUZUKI	177	7												7
TATA	168	0												0
SMART	88	0												0
MASERATI	73	1												1
INFINITI	43	0												0
GEELY	25	0												0
BENTLEY	19	0												0
LEXUS	13	0												0
FERRARI	10	3												3
LAMBORGHINI	6	0												0
LANCIA	2	0												0
ASTON MARTIN	0	2												2
DS	0	8												8
<b>TOPLAM</b>	<b>537.715</b>	<b>15.957</b>	<b>0</b>	<b>0</b>	<b>0</b>	<b>0</b>	<b>0</b>	<b>0</b>	<b>0</b>	<b>0</b>	<b>0</b>	<b>0</b>	<b>0</b>	<b>15.957</b>

### 2016 YILI İTHAL HAFİF TİCARİ ARAÇ SATIŞLARI / Light Commercial Vehicles Import 2016

	2015 TOPLAMI 2015 Total	1	2	3	4	5	6	7	8	9	10	11	12	2016 TOPLAMI 2016 Total
VOLKSWAGEN	31.642	1.736												1.736
RENAULT	15.617	451												451
FIAT	9.072	272												272
MERCEDES BENZ	8.457	360												360
PEUGEOT	8.212	467												467
DACIA	7.555	221												221
CITROEN	6.511	207												207
KIA	4.110	159												159
FORD	4.028	85												85
MITSUBISHI	3.897	324												324
TOYOTA	2.928	34												34
IVECO	2.710	88												88
HYUNDAI	1.612	71												71
ISUZU	333	57												57
SSANGYONG	303	3												3
TATA	228	9												9
NISSAN	7	0												0
MAZDA	0	0												0
<b>TOPLAM</b>	<b>107.222</b>	<b>4.540</b>	<b>0</b>	<b>0</b>	<b>0</b>	<b>0</b>	<b>0</b>	<b>0</b>	<b>0</b>	<b>0</b>	<b>0</b>	<b>0</b>	<b>0</b>	<b>4.540</b>