



OTOMOTİV SANAYİİ DERNEĞİ  
AUTOMOTIVE MANUFACTURERS ASSOCIATION

# AYLIK RAPOR

## Automotive Industry Monthly Report

Kasım / November 2017

- **Üretim/Production**
- **Satış/Sales**
- **İthalat/Imports**
- **İhracat/Exports**

OSD "OICA" Üyesidir



OSD is a Member of "OICA"

## 2017 Kasım Ayı Özeti / 2017 November Summary

		KASIM / NOVEMBER			11 AY/ 11 MONTHS			SON 12 AYLIK / YoY		
		2016	2017	2017/2016 (%)	2016	2017	2017/2016 (%)	2016	2017	2017/2016 (%)
<b>Üretim/Production</b>	<b>Toplam/Total</b>	150.681	163.460	8	1.329.812	1.543.587	16	1.455.564	1.699.751	17
	<b>Otomobil/P.Cars</b>	104.737	106.487	2	843.925	1.047.846	24	918.613	1.154.854	26
<b>Pazar/Market</b>	<b>Toplam/Total</b>	124.839	103.125	-17	862.929	839.626	-3	1.026.361	984.522	-4
	<b>Otomobil/P.Cars</b>	95.783	75.956	-21	648.894	623.065	-4	763.234	731.109	-4
<b>İthalat/Import</b>	<b>Toplam/Total</b>	84.284	67.015	-20	589.318	539.707	-8	688.596	631.665	-8
	<b>Otomobil/P.Cars</b>	70.738	55.400	-22	489.980	437.903	-11	571.503	512.968	-10
<b>İhracat/Export</b>	<b>Toplam/Total</b>	117.042	112.638	-4	1.022.480	1.215.977	19	1.114.763	1.334.801	20
	<b>Otomobil/P.Cars</b>	83.635	74.966	-10	658.602	844.061	28	718.724	931.153	30
<b>İhracat / Export (\$)</b>	<b>Toplam/Total **</b>	2.292.782.054	2.691.892.709	17	21.898.467.195	26.466.986.783	21	23.772.175.507	28.847.724.138	21
	<b>Otomobil/P.Cars</b>	950.971.854	1.075.768.968	13	7.250.273.148	10.803.943.111	49	7.867.869.559	11.896.704.916	51
PARAMETRELER / PARAMETERS		KASIM / NOVEMBER			11 AY/ 11 MONTHS			SON 12 AYLIK / YoY		
		2016	2017	2017/2016 (%)	2016	2017	2017/2016 (%)	2016	2017	2017/2016 (%)
<b>ÜFE/PPI</b>		2,00	2,02	**	6,76	13,91	**	3,93	15,38	**
<b>TÜFE/CPI</b>		0,52	1,49	**	6,78	11,16	**	7,79	10,87	**
<b>Sanayi Endeksi/Industry Index</b>		2,41	2,41	**	8,53	15,10	**	5,08	17,16	**
<b>\$ (*)</b>		3,2555	3,8709	19	2,9620	3,6052	22	2,9571	3,5949	22
<b>EURO (*)</b>		3,5187	4,5463	29	3,2856	4,0582	24	3,2719	4,0270	23
<b>Japon Yeni (*)</b>		2,9708	3,4033	15	2,7209	3,1971	18	2,6919	3,1806	18

(\* ) Ortalama Değerler / Average Values

(\*\* ) Toplam Sanayi / Total Industry Including Components

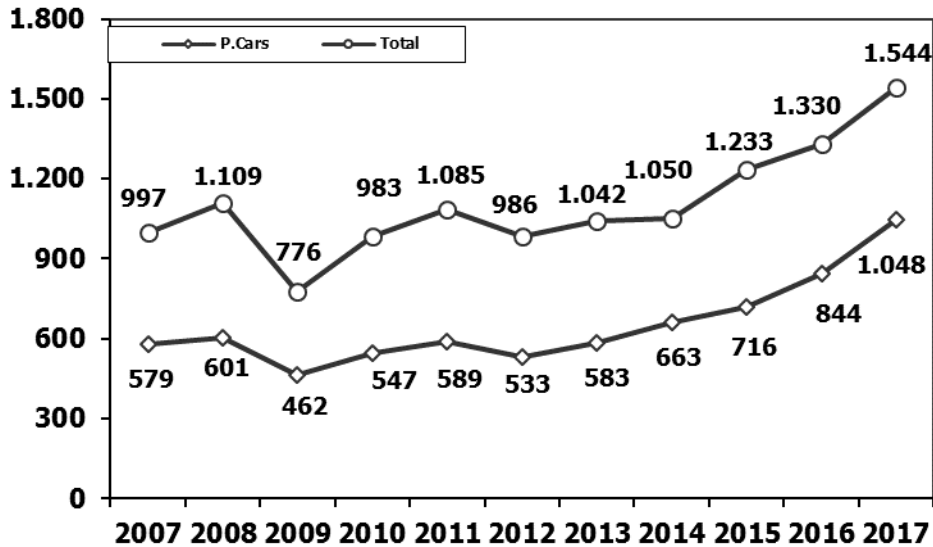
*Raporda yer alan üretim adetleri yalnızca OSD üyelerinin verilerini göstermektedir.  
Production units in this report only show the data of OSD members.*

K.KAMYON : AYA 3.5-12 Ton (L.Truck:GVW 3.5-12 Ton)

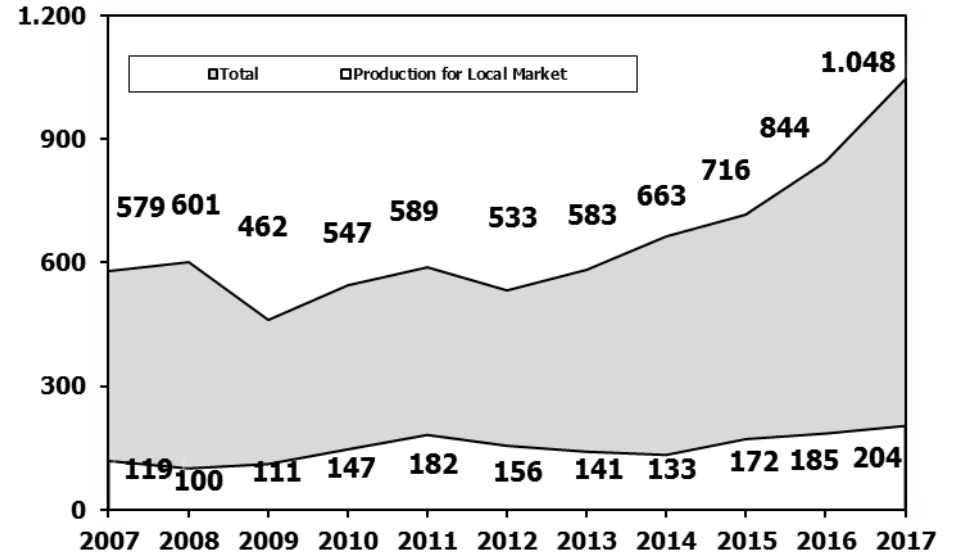
B.KAMYON : AYA 12 Ton'dan Büyük (M.Truck:GVW 12 Ton And Up)

ARAÇ TİPLERİ	KASIM AYI ÜRETİMİ November Production		11 AYLIK ÜRETİM 11 Months Production		DEĞİŞİM % Percent Change %	
	2016	2017	2016	2017	KASIM November	11 AY 11 Months
<b>OTOMOBİL - Pass.Car</b>	<b>104.737</b>	<b>106.487</b>	<b>843.925</b>	<b>1.047.846</b>	<b>2</b>	<b>24</b>
<b>TİCARİ ARAÇLAR - Commercial Vehicles</b>	<b>45.944</b>	<b>56.973</b>	<b>485.887</b>	<b>495.741</b>	<b>24</b>	<b>2</b>
* B. KAMYON - H. Truck	1.247	2.443	13.923	17.169	96	23
* K. KAMYON - L. Truck	278	568	2.272	3.633	104	60
* KAMYONET - Pick Up	38.732	47.732	418.834	413.693	23	-1
* OTOBÜS - Bus	679	589	7.588	7.610	-13	0
* MİNİBÜS - Minibus	4.770	5.144	40.176	50.367	8	25
* MİDİBÜS - Midibus	238	497	3.094	3.269	109	6
<b>TAŞIT ARAÇLARI TOPLAM - MV Total</b>	<b>150.681</b>	<b>163.460</b>	<b>1.329.812</b>	<b>1.543.587</b>	<b>8</b>	<b>16</b>
<b>TRAKTÖR - F.Tractor</b>	<b>4.319</b>	<b>5.280</b>	<b>47.266</b>	<b>49.196</b>	<b>22</b>	<b>4</b>
<b>GENEL TOPLAM - Grand Total</b>	<b>155.000</b>	<b>168.740</b>	<b>1.377.078</b>	<b>1.592.783</b>	<b>9</b>	<b>16</b>

**Toplam Üretim ve Otomobil Üretimi (x1000) (Ocak-Kasım)**  
Total & P.Cars Production (x1000) (January-November)

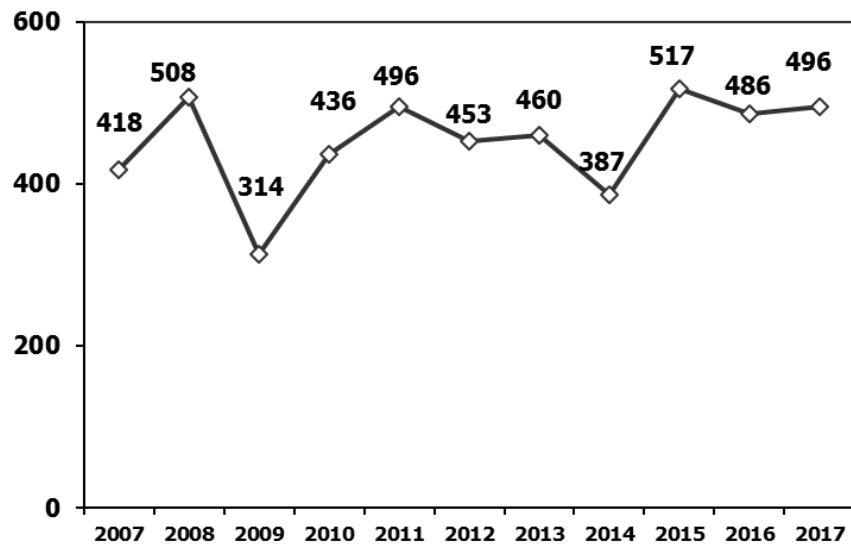


**Otomobil Üretimi ve İhracat (x1000) (Ocak-Kasım)**  
P.Cars Production & Exports (x1000) (January-November)



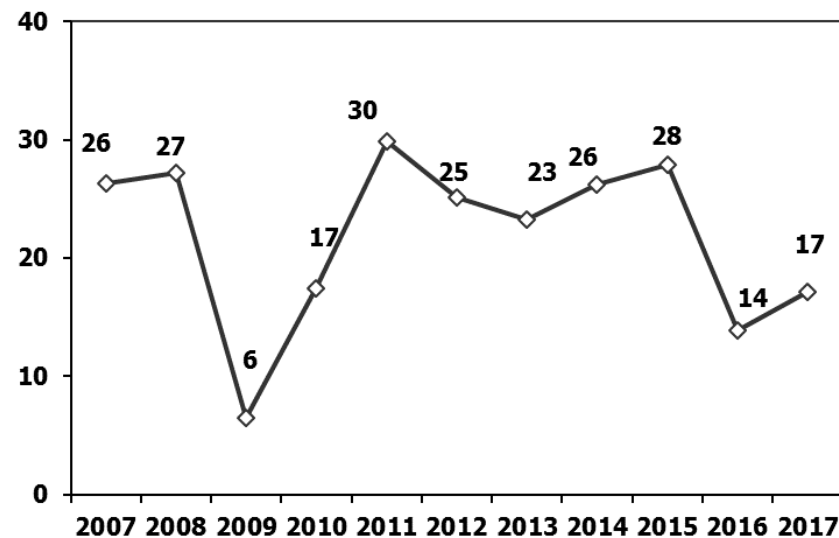
### Ticari Araç Üretimi (x1000) (Ocak-Kasım)

Commercial Vehicle Production (x1000) (January-November)



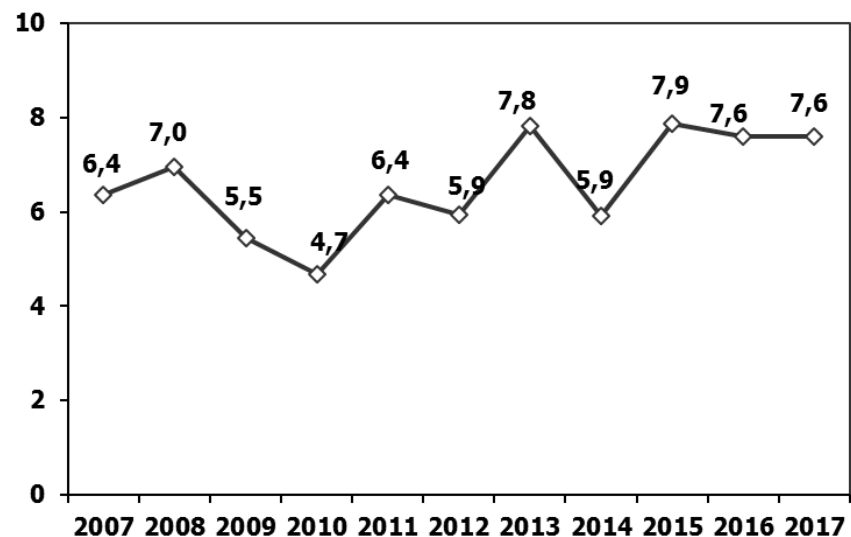
### (AYA > 12 Ton) Büyük Kamyon Üretimi (x1000) (Ocak-Kasım)

(GW > 12 Ton) Heavy Truck Production (x1000) (January-November)



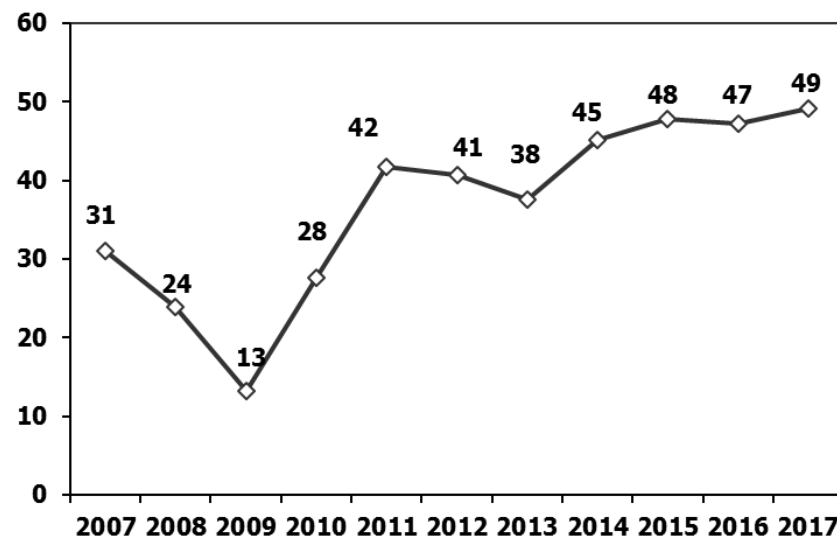
### Otobüs Üretimi (x1000) (Ocak-Kasım)

Bus Production (x1000) (January-November)



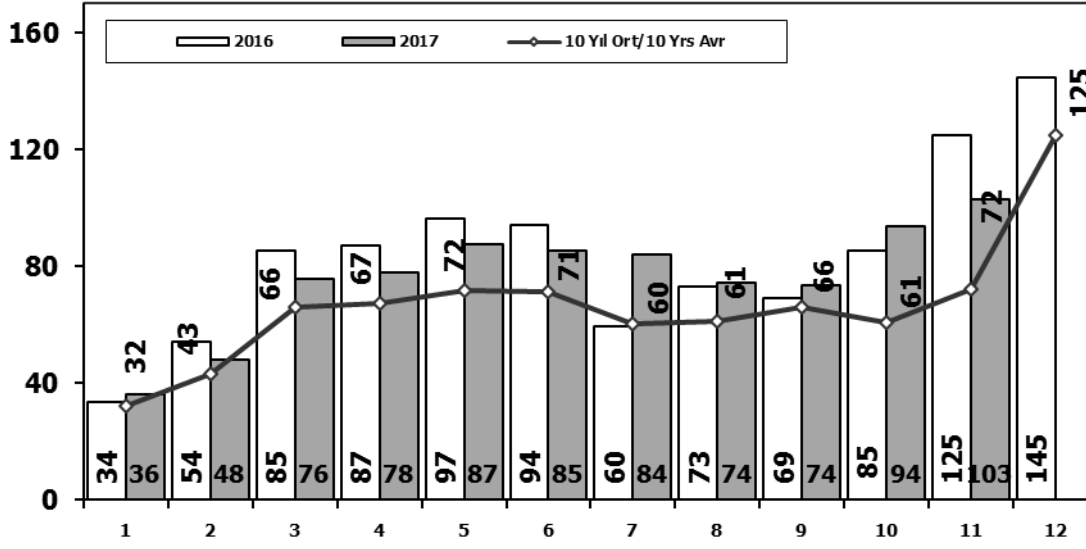
### Traktör Üretimi (x1000) (Ocak-Kasım)

F. Tractor Production (x1000) (January-November)



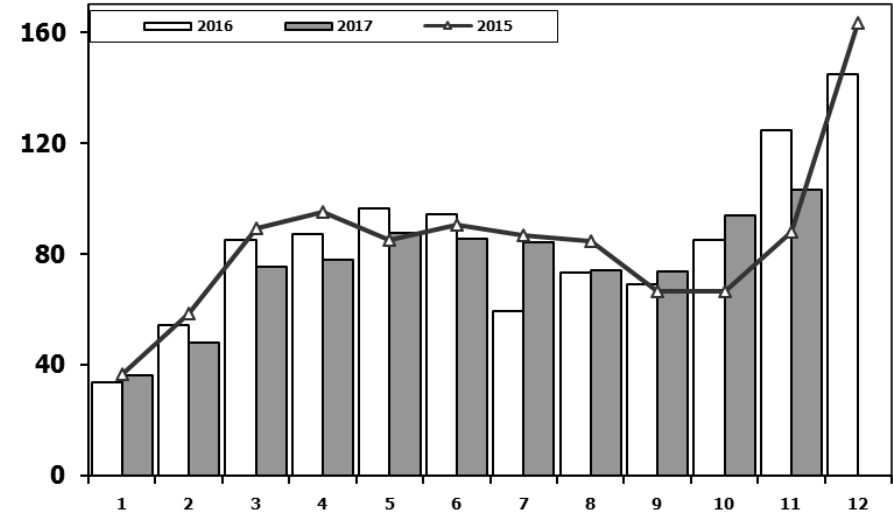
## Toplam Pazarın Analizi (x1000)

### Total Market Analysis (x1000)



## Toplam Pazar (x1000)

### Total Market (x1000)



Aylar/ Months	10 Yil Ort. 10 Yrs Avr. (x1000)	2017 (x1000)	%
1	32,1	36,1	12,6
2	43,2	48,1	11,4
3	66,3	75,6	14,0
4	67,2	77,8	15,8
5	71,8	87,5	21,8
6	71,5	85,4	19,5
7	60,2	84,2	39,8
8	61,3	74,3	21,2
9	66,1	73,6	11,4
10	60,7	93,8	54,6
11	72,4	103,1	42,5
<b>Total</b>	<b>672,8</b>	<b>839,6</b>	<b>24,8</b>

	1	2	3	4	5	6	7	8	9	10	11	12	11 Ay/Mo	Total
<b>2007</b>	24.950	31.702	45.488	45.633	51.255	51.661	50.117	54.171	50.078	56.058	67.017	106.076	528.130	634.206
<b>2008</b>	33.792	38.121	56.814	50.967	51.627	49.393	44.692	46.592	46.829	35.147	28.152	44.418	482.126	526.544
<b>2009</b>	20.631	22.846	56.531	54.426	64.887	63.102	30.246	37.092	83.403	22.117	29.202	91.386	484.483	575.869
<b>2010</b>	21.050	32.313	53.828	57.079	61.628	63.390	63.718	64.645	66.601	76.780	77.406	154.734	638.438	793.172
<b>2011</b>	47.658	62.348	83.333	82.071	85.093	85.863	65.364	61.378	63.643	72.640	67.195	134.281	776.586	910.867
<b>2012</b>	31.219	43.827	68.957	66.014	74.820	74.781	65.122	60.848	73.197	62.677	75.045	121.113	696.507	817.620
<b>2013</b>	37.140	50.931	72.688	77.015	85.421	77.771	74.726	67.383	71.037	60.399	83.017	135.596	757.528	893.124
<b>2014</b>	34.225	37.308	50.964	56.766	61.909	63.952	62.206	62.839	70.180	69.259	83.937	153.941	653.545	807.486
<b>2015</b>	36.576	58.533	89.121	95.431	85.145	90.463	86.625	84.683	66.622	66.520	88.043	163.432	847.762	1.011.194
<b>2016</b>	33.740	54.223	85.214	87.041	96.576	94.203	59.505	73.269	69.068	85.251	124.839	144.928	862.929	1.007.857
<b>2017</b>	36.146	48.141	75.581	77.849	87.476	85.416	84.189	74.295	73.602	93.806	103.125		839.626	839.626





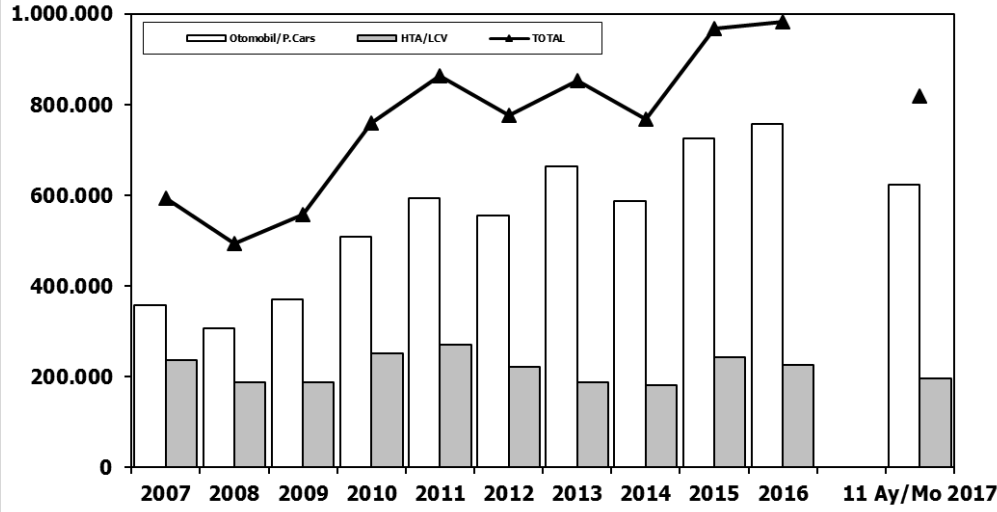






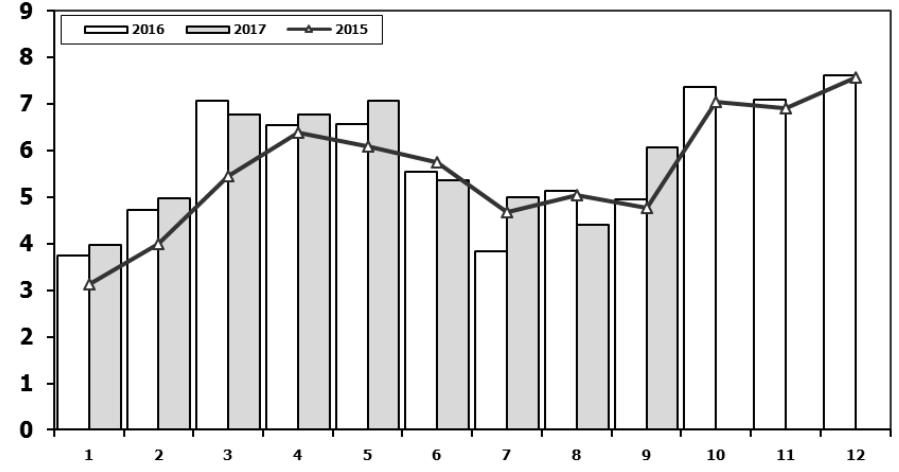
## Hafif Araç Pazarı (AYA < 3.5 Ton)

### Light Vehicle Market (GVW < 3.5 Ton)



## Traktör Pazarı (x1000)

### F.Tractor Market (x1000)



	2007	2008	2009	2010	2011	2012	2013	2014	2015	2016	11 Ay/Mo 2017
<b>Otomobil/P.Cars</b>	357.465	305.998	369.819	509.784	593.519	556.280	664.655	587.331	725.596	756.938	623.065
<b>HTA/LCV</b>	237.297	188.025	187.307	251.129	270.920	221.481	188.723	180.350	242.421	226.782	196.889
<b>Toplam/Total</b>	594.762	494.023	557.126	760.913	864.439	777.761	853.378	767.681	968.017	983.720	819.954
<b>HTA/LCV (%)</b>	40	38	34	33	31	28	22	23	25	23	24

	1	2	3	4	5	6	7	8	9	10	11	12	9 Ay/Mo	Total
<b>2007</b>	2.816	2.244	3.053	2.657	3.188	3.141	2.497	2.381	3.025	2.755	3.549	3.097	25.002	34.403
<b>2008</b>	2.770	1.855	3.395	3.081	2.769	2.400	2.232	2.485	1.856	1.773	1.305	1.101	22.843	27.022
<b>2009</b>	717	572	688	1.070	1.297	1.256	1.054	1.183	1.117	1.356	1.304	2.144	8.954	13.758
<b>2010</b>	1.111	1.991	2.330	3.039	2.567	2.638	1.965	3.019	2.806	4.424	3.978	6.168	21.466	36.036
<b>2011</b>	2.975	5.242	5.927	5.358	6.016	6.335	4.534	4.051	4.140	5.828	4.943	4.992	44.578	60.341
<b>2012</b>	2.362	1.983	4.348	6.579	6.273	4.569	3.837	3.158	3.618	4.027	4.807	4.757	36.727	50.318
<b>2013</b>	2.161	2.432	4.005	4.585	5.616	3.136	4.574	3.408	4.935	4.762	5.781	6.891	34.852	52.286
<b>2014</b>	2.169	3.512	4.476	4.905	5.094	5.028	4.233	4.920	5.619	5.743	6.250	7.409	39.956	59.358
<b>2015</b>	3.124	3.984	5.460	6.383	6.078	5.748	4.677	5.044	4.765	7.049	6.898	7.564	45.263	66.774
<b>2016</b>	3.739	4.731	7.067	6.546	6.575	5.543	3.833	5.134	4.945	7.372	7.090	7.603	48.113	70.178
<b>2017</b>	3.974	4.964	6.773	6.780	7.057	5.356	5.003	4.396	6.064				50.367	50.367

Kaynak: TÜİK trafik kayıtları.

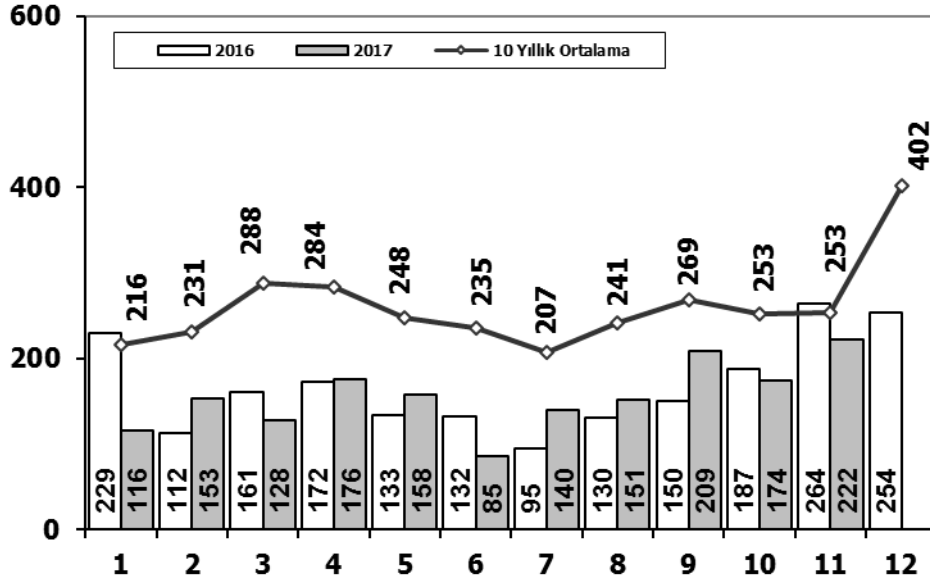
Rakamlar, son iki model yılına ait traktör tescillerinden oluşmaktadır.

Source: Turkish Statistical Institute – Traffic registrations

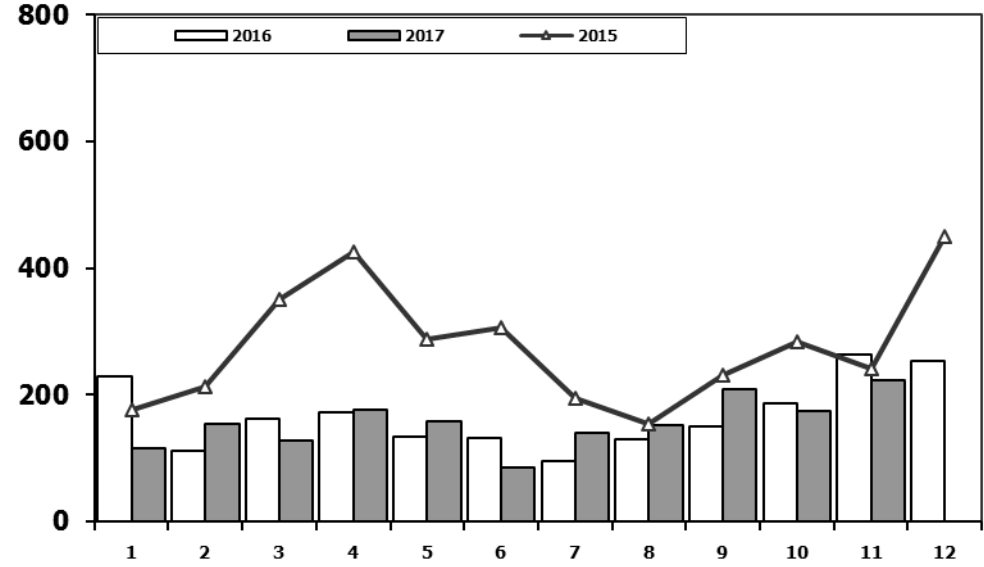
Data represents the last two model year's farm tractors registration figures



## Midibüs Pazarının Analizi (7-9 mt / 25-35 Kişilik) Midibus Market Analysis (7-9 mt / 25-35 Passengers)



## Midibüs Pazarı (7-9 mt / 25-35 Kişilik Midibüs) Midibus Market (7-9 mt / 25-35 Passengers)

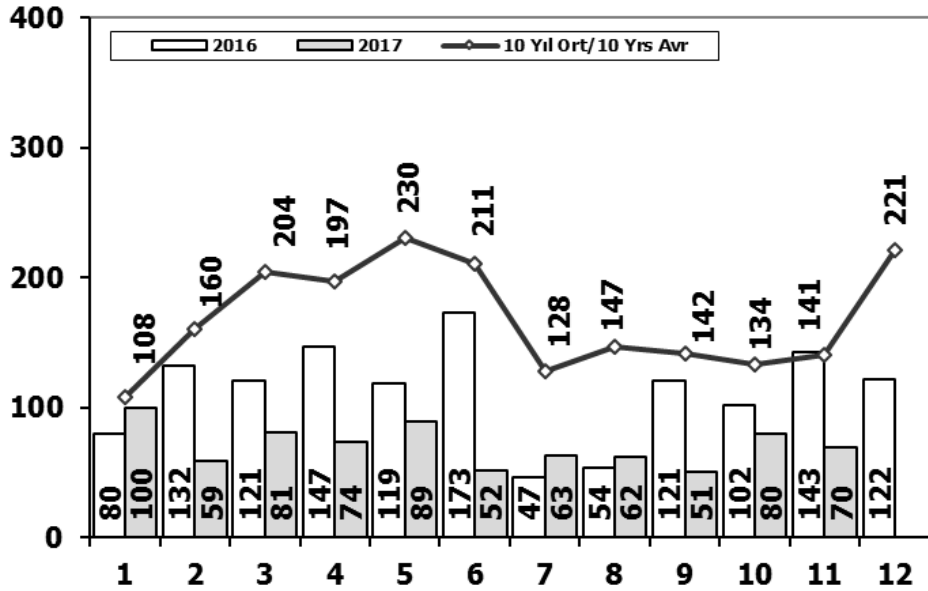


Aylar / Months	10 Yıl Ort. 10 Yrs Avr.	2017	%
1	216	116	-46
2	231	153	-34
3	288	128	-56
4	284	176	-38
5	248	158	-36
6	235	85	-64
7	207	140	-32
8	241	151	-37
9	269	209	-22
10	253	174	-31
11	253	222	-12
<b>Total</b>	<b>2.724</b>	<b>1.712</b>	<b>-37</b>

	1	2	3	4	5	6	7	8	9	10	11	12	11 Ay/Mo	Total
<b>2007</b>	207	272	404	238	302	283	164	365	399	279	283	465	3.196	3.661
<b>2008</b>	391	476	436	512	419	331	368	380	341	352	246	270	4.252	4.522
<b>2009</b>	154	124	160	220	174	198	160	175	168	143	206	323	1.882	2.205
<b>2010</b>	155	131	185	167	140	138	129	246	236	206	202	437	1.935	2.372
<b>2011</b>	138	195	294	316	280	258	211	305	301	276	260	270	2.834	3.104
<b>2012</b>	179	257	277	229	257	239	216	249	325	269	189	398	2.686	3.084
<b>2013</b>	191	268	289	276	283	241	367	235	305	392	415	697	3.262	3.959
<b>2014</b>	335	265	326	280	206	223	161	174	229	140	226	454	2.565	3.019
<b>2015</b>	177	213	350	425	288	306	195	154	231	283	240	450	2.862	3.312
<b>2016</b>	229	112	161	172	133	132	95	130	150	187	264	254	1.765	2.019
<b>2017</b>	116	153	128	176	158	85	140	151	209	174	222		1.712	1.712

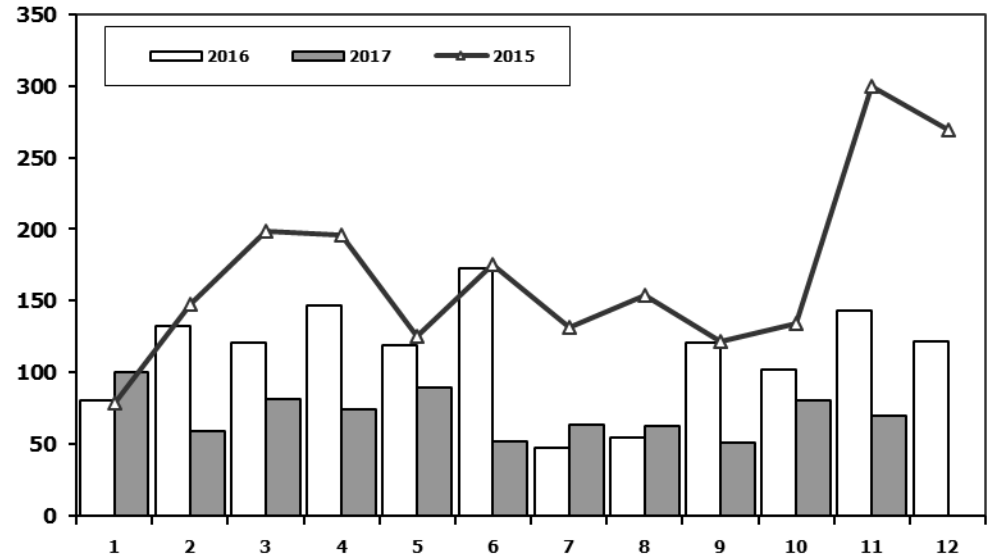
## Otobüs Pazarının Analizi

Bus Market Analysis



## Otobüs Pazarı

Bus Market



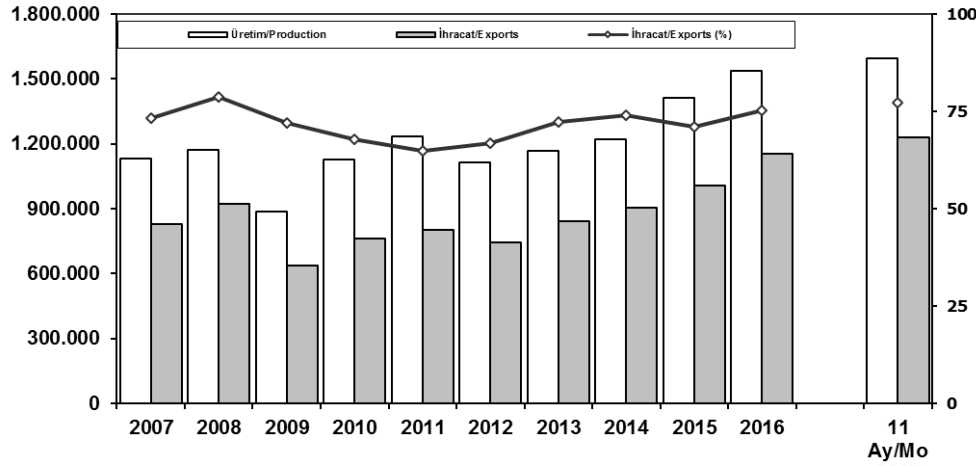
Aylar / Months	10 Yil Ort. 10 Yrs Avr.	2017	%
1	108	100	-7
2	160	59	-63
3	204	81	-60
4	197	74	-62
5	230	89	-61
6	211	52	-75
7	128	63	-51
8	147	62	-58
9	142	51	-64
10	134	80	-40
11	141	70	-50
<b>Total</b>	<b>1.801</b>	<b>781</b>	<b>-57</b>

	1	2	3	4	5	6	7	8	9	10	11	12	11 Ay/Mo	Total
<b>2007</b>	72	191	129	89	150	91	91	103	110	168	163	241	1.357	1.598
<b>2008</b>	77	85	108	176	151	212	101	165	166	121	141	236	1.503	1.739
<b>2009</b>	100	221	226	224	167	186	85	103	58	75	53	125	1.498	1.623
<b>2010</b>	23	42	102	159	145	151	151	189	107	99	106	251	1.274	1.525
<b>2011</b>	76	198	218	306	364	283	113	189	132	169	170	314	2.218	2.532
<b>2012</b>	120	87	201	139	379	225	152	174	252	226	140	315	2.095	2.410
<b>2013</b>	349	425	498	444	525	483	352	260	215	192	128	156	3.871	4.027
<b>2014</b>	103	73	239	89	177	128	55	76	139	52	62	185	1.193	1.378
<b>2015</b>	79	148	199	196	125	175	131	154	122	134	300	269	1.763	2.032
<b>2016</b>	80	132	121	147	119	173	47	54	121	102	143	122	1.239	1.361
<b>2017</b>	100	59	81	74	89	52	63	62	51	80	70		781	781



## İhracat/Üretim (2007-2017) (Traktör dahil)

Exports/Production (2007-2017) (Including F.Tractor)



## Taşıt Araçları İhracatı (2015-2017)

Motor Vehicle Exports (2015-2017)

SEKTÖR/SECTOR	2015	2016	2016	2017	2017/2016 (%)
			11 Ay-11 Mo		
OTOMOBİL / P.Cars	604.683	745.709	658.602	844.061	28
TİCARİ ARAÇLAR / CV	387.652	395.673	363.878	371.916	2
* Kamyonet/Pick-Up	341.834	347.949	320.835	316.156	-1
* Minibüs/Minibus	38.255	34.790	31.044	41.860	35
* Kamyon/Truck	1.408	5.521	5.189	6.937	34
* Midibüs/Midibus	447	915	862	554	-36
* Otobüs/Bus	5.708	6.498	5.948	6.409	8
<b>TAŞIT ARAÇLARI /MV TOTAL</b>	<b>992.335</b>	<b>1.141.382</b>	<b>1.022.480</b>	<b>1.215.977</b>	<b>19</b>
<b>TRAKTÖR/F.TRACTOR</b>	<b>14.932</b>	<b>13.651</b>	<b>12.577</b>	<b>12.271</b>	<b>-2</b>
<b>TOTAL</b>	<b>1.007.267</b>	<b>1.155.033</b>	<b>1.035.057</b>	<b>1.228.248</b>	<b>19</b>

	2007	2008	2009	2010	2011	2012	2013	2014	2015	2016	11 Ay/Mo 2017
Üretim/Production	1.132.951	1.171.917	884.466	1.124.982	1.234.637	1.115.233	1.166.043	1.218.848	1.410.034	1.536.673	1.592.783
İhracat/Exports	829.879	920.763	637.855	763.670	801.112	745.354	843.467	902.194	1.007.267	1.155.033	1.228.248
İhracat/Exports (%)	73	79	72	68	65	67	72	74	71	75	77

## Otomotiv Ana ve Yan Sanayii İhracatı (ABD \$)

CBU and CKD Exports - \$

Sektör / Sector	2013	2014	2015	2016	2017		2017/2016 (%)
					Ocak-Kasım / January-November		
<b>Yan Sanayi İhracatı/Total Component Exports</b>	<b>9.065.017.539</b>	<b>9.504.013.791</b>	<b>8.641.977.425</b>	<b>8.947.915.672</b>	<b>8.239.913.492</b>	<b>8.994.519.280</b>	<b>9%</b>
İç ve Dış Lastik / Tyres	1.130.005.891,78	1.126.709.610,14	960.550.807	978.284.060	899.459.107	1.038.234.894	15%
Emniyet Camı / Safety Glasses	135.230.309,67	143.208.298,99	124.564.841	119.569.736	109.716.320	124.785.598	14%
Motor (Engine)	319.294.885,46	171.893.752,32	221.897.271	370.561.589	342.380.808	433.380.659	27%
Akümülatör / Batteries	306.451.449,47	289.101.198,21	220.462.827	224.590.660	190.771.672	258.148.677	35%
Diğer Aksam ve Parça / Spare Parts&Components	7.174.035.002,35	7.773.100.931,83	7.114.501.679	7.254.909.627	6.697.585.586	7.139.969.452	7%
<b>Ana Sanayi İhracatı/Total Vehicle Exports</b>	<b>12.491.591.365</b>	<b>13.259.499.977</b>	<b>12.977.346.859</b>	<b>15.302.074.705</b>	<b>13.658.553.702</b>	<b>17.472.467.503</b>	<b>28%</b>
Otobüs / Bus	937.790.962,87	985.983.007,01	1.023.556.746	1.190.475.986	1.092.641.887	1.180.157.290	8%
Midibüs-Minibüs / Minibus- Minibus	147.769.644,17	97.685.509,12	130.195.838	238.911.957	214.789.004	196.151.502	-9%
Otomobil (P. Cars)	6.855.475.589,83	7.258.361.005,24	6.881.867.274	8.336.946.503	7.250.273.148	10.803.943.111	49%
Kamyon-Kamyonet/HCV-LCV	3.918.798.755,31	4.201.760.813,55	4.264.018.829	4.616.562.139	4.237.204.158	4.393.067.122	4%
Römork ve Yarı Römork/Trailer-Semi Trailer	218.385.731,69	252.354.014,20	252.397.167	265.323.711	246.475.718	206.737.977	-16%
Çekici/Truck-Tractor	77.907.406,95	38.396.524,81	48.108.959	316.355.575	309.491.572	396.240.250	28%
Tarım Traktörü/Farm Tractor	335.463.274,61	424.959.103,39	377.202.046	337.498.834	307.678.215	296.170.251	-4%
<b>Toplam/Total</b>	<b>21.556.608.904</b>	<b>22.763.513.769</b>	<b>21.619.324.284</b>	<b>24.249.990.377</b>	<b>21.898.467.195</b>	<b>26.466.986.783</b>	<b>21%</b>

Kaynak: Uludağ İhracatçı Birlikleri . UİB tarafından OSD için özel olarak analiz edilen Otomotiv İhracatı kapsamında; UİB Türkiye Genel Otomotiv Endüstrisi sınıflandırmasına kıyasla "Römork ve Yarı Römork", "Tarım Traktörü" verileri dahil edilmekte; "Kullanılmış Araçlar", "İki Tekerlekli Taşıtlar", "Demiryolu Taşıtları" hariç tutulmaktadır.

Source: Uludağ Exporters Association - Special Analyze for OSD

Compared to Turkish General Automotive Industry classification, this special analyze includes; farms tractors, trailers and semi-trailers, does not include; used vehicles, two-wheeled vehicles and railway vehicles.

**Sektör Bazında İhracat (1000 \$)**

Exports on Sectorial Basis

SEKTÖRLER (1.000 \$)	KASIM				OCAK - KASIM				SON 12 AYLIK			
	2016	2017	Değişim ('17/'16)	Pay(17)	2016	2017	Değişim ('17/'16)	Pay(17)	2016	2017	Değişim ('17/'16)	Pay(17)
Otomotiv Endüstrisi	2.253.216	2.645.548	17,4	19,4	21.541.483	26.045.475	20,9	18,3	23.389.013	28.391.922	21,4	18,3
Hazırgiyim ve Konfeksiyon	1.312.656	1.440.305	9,7	10,6	15.619.154	15.611.867	0,0	10,9	17.007.575	16.948.947	-0,3	10,9
Kimyevi Maddeler ve Mamulleri	1.154.563	1.391.634	20,5	10,2	12.647.241	14.672.486	16,0	10,3	13.908.912	15.962.073	14,8	10,3
Çelik	739.255	1.084.406	46,7	8,0	8.148.872	10.319.460	26,6	7,2	8.908.832	11.243.791	26,2	7,2
Elektrik Elektronik ve Hizmet	898.554	1.012.900	12,7	7,4	9.028.952	9.411.577	4,2	6,6	9.963.516	10.358.792	4,0	6,7
Tekstil ve Hammaddeleri	693.725	728.664	5,0	5,3	7.221.435	7.409.261	2,6	5,2	7.848.705	8.054.636	2,6	5,2
Demir ve Demir Dışı Metaller	517.721	645.222	24,6	4,7	5.455.000	6.186.734	13,4	4,3	5.961.302	6.677.522	12,0	4,3
Hububat, Bakliyat, Yağlı Tohumlar ve Mamulleri	602.069	567.348	-5,8	4,2	5.744.677	5.810.290	1,1	4,3	6.286.431	6.424.574	2,2	4,1
Makine ve Aksamları	454.431	581.889	28,0	4,3	4.808.697	5.481.373	14,0	3,8	5.310.724	5.972.570	12,5	3,8
Madencilik Ürünleri	384.469	388.723	1,1	2,9	3.433.141	4.282.164	24,7	3,0	3.742.188	4.636.268	23,9	3,0
<b>TOPLAM</b>	<b>11.935.084</b>	<b>13.629.173</b>	<b>14,2</b>	<b>100,0</b>	<b>128.897.209</b>	<b>142.662.849</b>	<b>10,7</b>	<b>100,0</b>	<b>140.648.027</b>	<b>155.443.373</b>	<b>10,5</b>	<b>100,0</b>

Kaynak: TİM

Kasım ayı ihracat verilerine, "İhracatçı Birlikleri Kaydından Muaf İhracat" verisi dahil değildir.

Source: TİM

Exportation data for November does not include "Exempted Exports from the Exporters' Union Registration".

**First 3 Sectors:**

- 1- Automotive Industry
- 2- Ready Wear and Confection
- 3- Chemical Articles and Products

**Firma Bazında İhracat (Adet)**

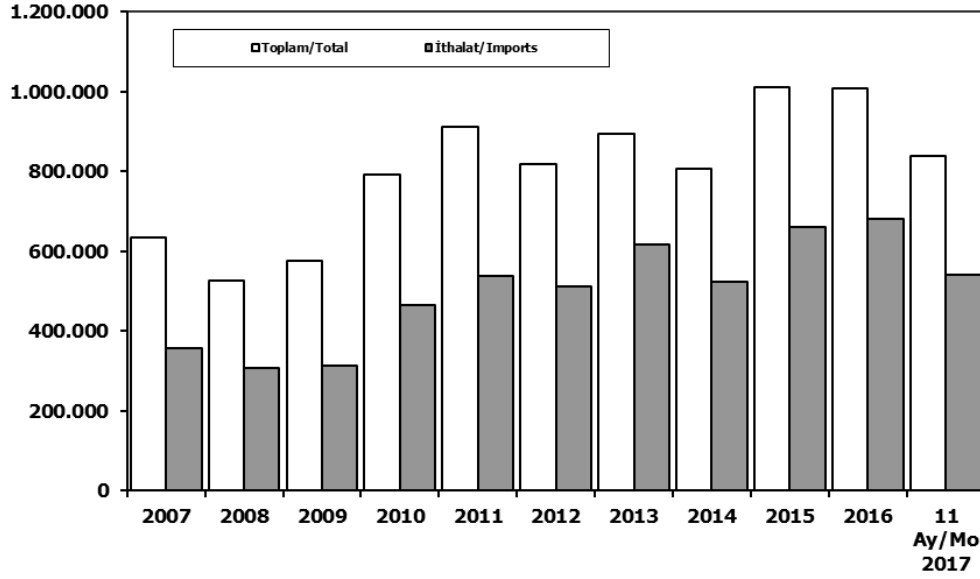
Export Of Member Companies (Unit)

FİRMALAR Companies	2015	2016	Ocak-Kasım 11 Months	
			2016	2017
FORD OTOSAN	252.571	256.706	234.035	268.868
OYAK RENAULT	270.299	270.088	243.718	265.080
TOFAŞ	173.743	279.444	252.769	251.450
TOYOTA	81.962	109.184	86.726	224.906
HYUNDAI ASSAN	201.276	207.234	188.233	181.225
TÜRK TRAKTÖR	14.122	12.625	11.650	11.206
M. BENZ TÜRK	4.252	8.307	7.970	9.115
HONDA TÜRKİYE	2.220	2.914	2.468	8.879
KARSAN	3.067	3.629	3.109	2.620
MAN TÜRKİYE	1.493	1.717	1.567	1.828
HATTAT TRAKTÖR	810	1.026	927	1.065
TEMSA	441	653	586	835
OTOKAR	720	833	693	629
A.I.O.S.	291	673	606	542
<b>GENEL TOPLAM</b>	<b>1.007.267</b>	<b>1.155.033</b>	<b>1.035.057</b>	<b>1.228.248</b>

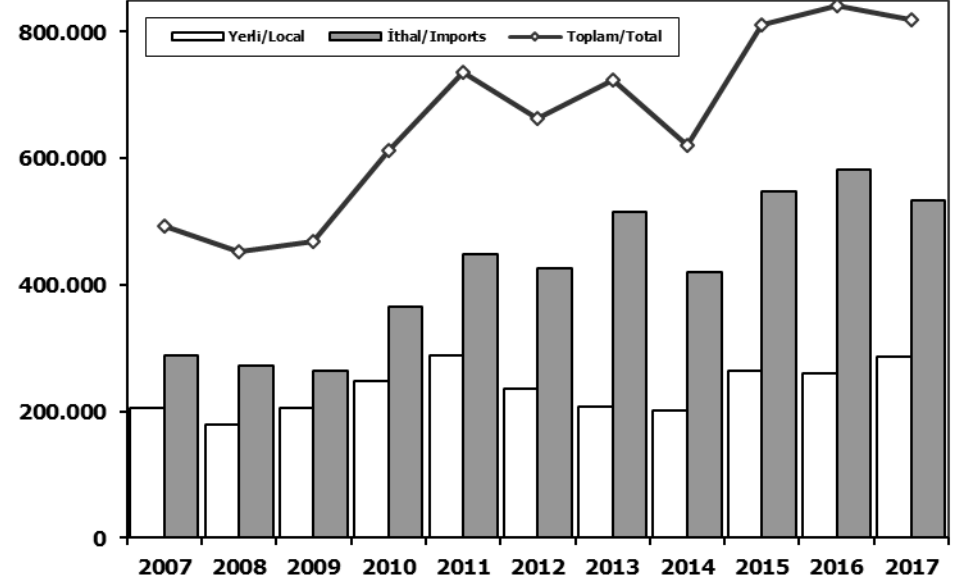
Kaynak: OSD



## Toplam Pazar (Otomobil+T.Araç) Total Market (P.Cars+C.V)



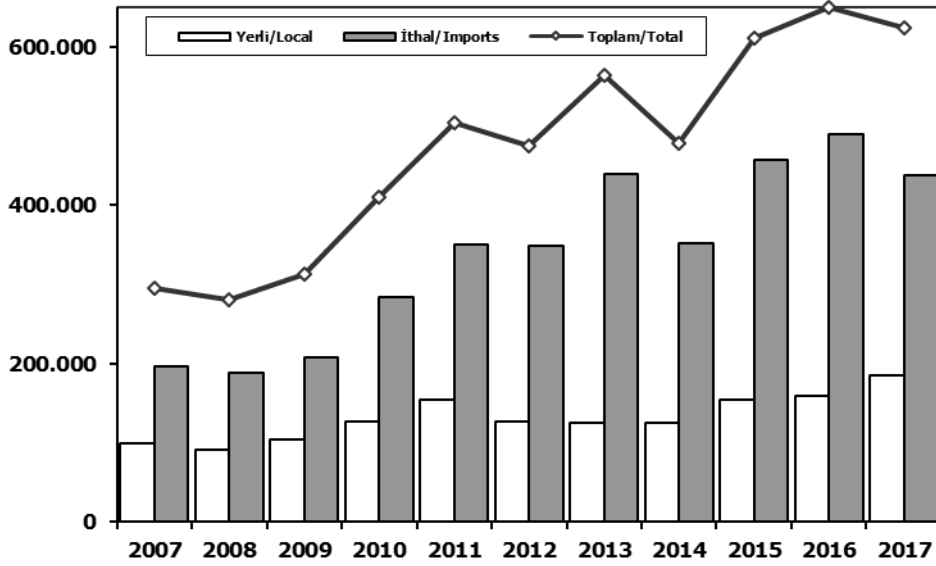
## Hafif Araçlar Pazarı (2007-2017 Ocak-Kasım) LV Market (2007-2017 January-November)



	2007	2008	2009	2010	2011	2012	2013	2014	2015	2016	11 Ay/Mo 2016	11 Ay/Mo 2017		2007	2008	2009	2010	2011	2012	2013	2014	2015	2016	2017
Toplam/Total	634.206	526.544	575.869	793.172	910.867	817.620	893.124	807.486	1.011.194	1.007.857	862.929	839.626	Yerli/Local	205.320	179.578	204.509	246.963	287.751	235.644	208.198	200.483	264.365	259.634	287.427
İthalat/Imports	355.752	306.087	313.921	465.408	538.532	511.694	615.609	522.842	660.045	681.308	589.318	539.707	İthal/Imports	288.516	272.367	263.694	365.581	448.778	426.717	515.462	420.209	547.479	582.174	532.527
İthalat/Imports (%)	56	58	55	59	59	63	69	65	65	68	68	64	Toplam/Total	493.836	451.945	468.203	612.544	736.529	662.361	723.660	620.692	811.844	841.808	819.954
													İthalat/Imports (%)	58	60	56	60	61	64	71	68	67	69	65

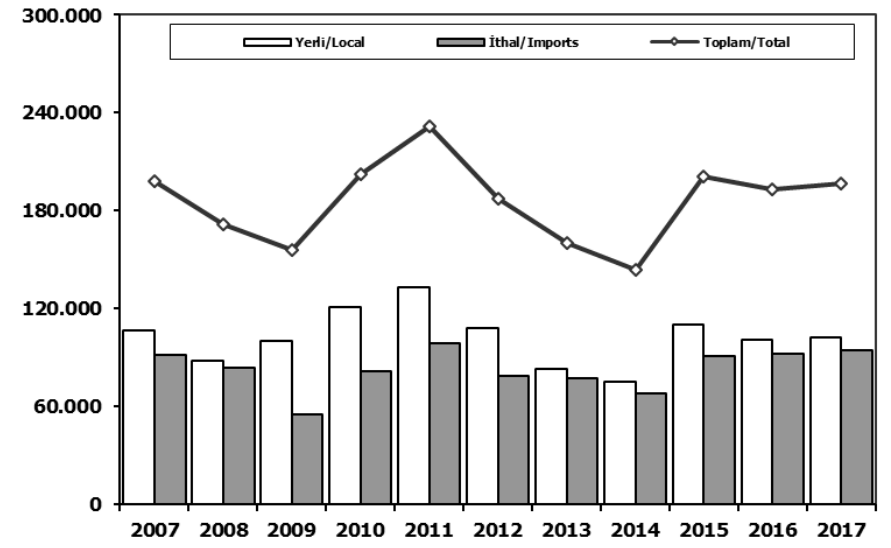
## Otomobil Pazarı (2007-2017 Ocak-Kasım)

### P.Cars Market (2007-2017 January-November)



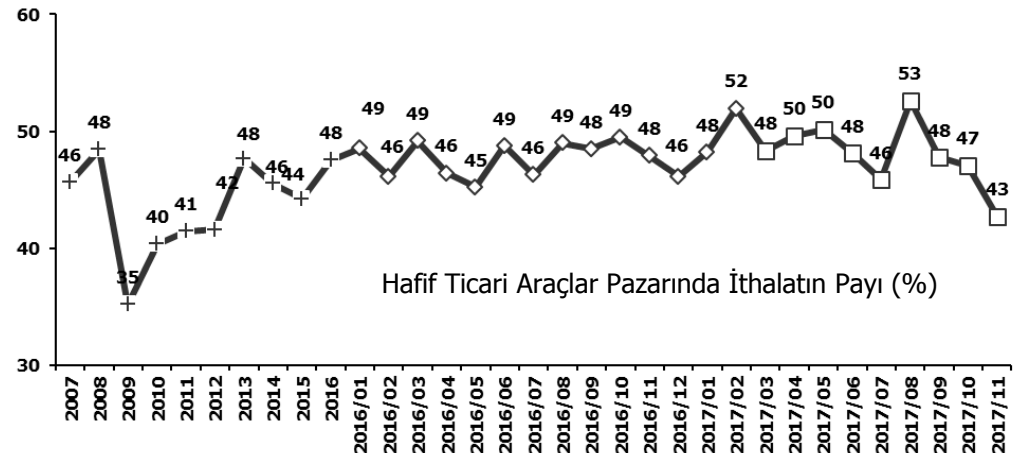
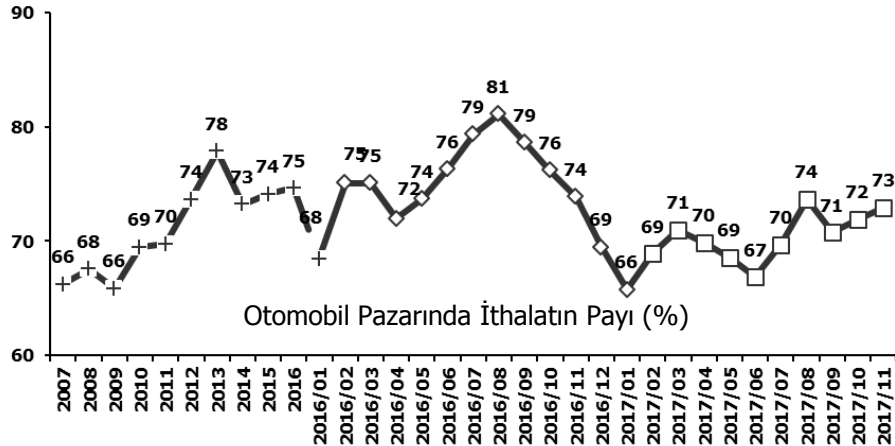
## Hafif Ticari Araçlar Pazarı (2007-2017 Ocak-Kasım)

### Light Commercial Vehicle Market (2007-2017 January-November)



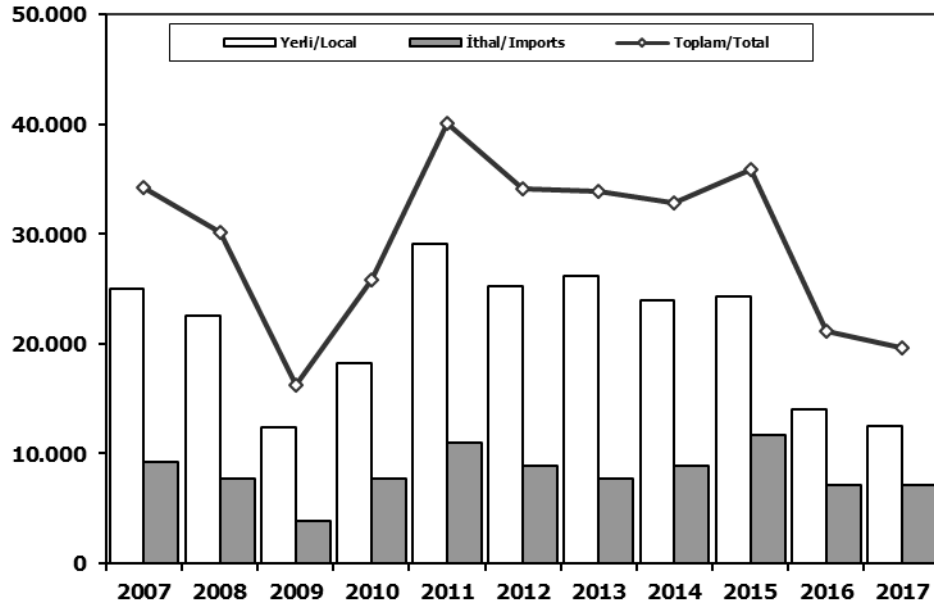
	2007	2008	2009	2010	2011	2012	2013	2014	2015	2016	2017
Yerli/Local	98.765	91.347	104.322	126.084	154.660	127.535	124.906	125.260	154.267	158.914	185.162
İthal/Imports	196.955	188.772	208.319	284.239	349.902	347.819	438.550	352.017	456.989	489.980	437.903
Toplam/Total	295.720	280.119	312.641	410.323	504.562	475.354	563.456	477.277	611.256	648.894	623.065
İthalat/Imports (%)	67	67	67	69	69	73	78	74	75	76	70

	2007	2008	2009	2010	2011	2012	2013	2014	2015	2016	2017
Yerli/Local	106.555	88.231	100.187	120.879	133.091	108.109	83.292	75.223	110.098	100.720	102.265
İthal/Imports	91.561	83.595	55.375	81.342	98.876	78.898	76.912	68.192	90.490	92.194	94.624
Toplam/Total	198.116	171.826	155.562	202.221	231.967	187.007	160.204	143.415	200.588	192.914	196.889
İthalat/Imports (%)	46	49	36	40	43	42	48	48	45	48	48



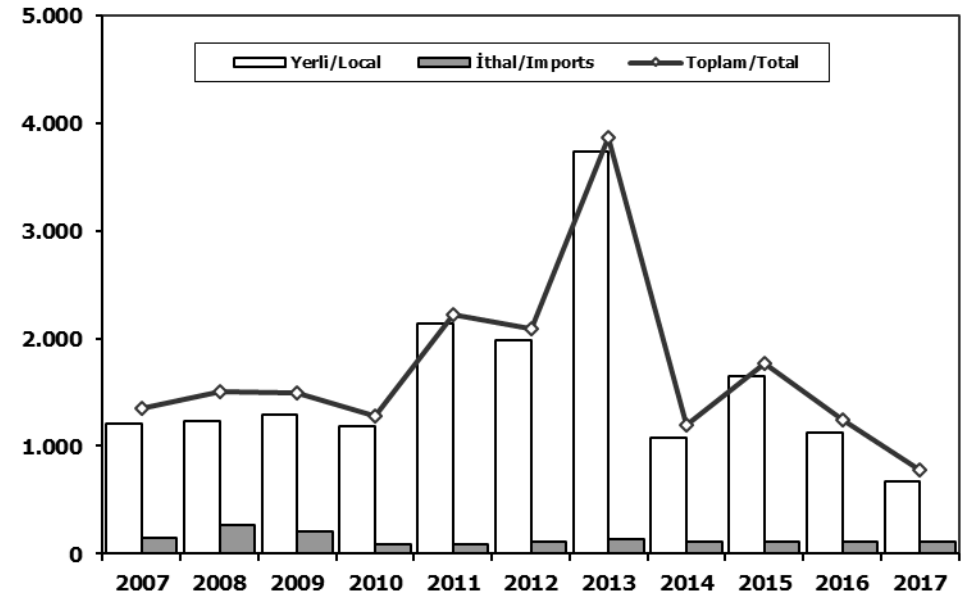
## Ağır Ticari Araçlar Pazarı (2007-2017 Ocak-Kasım)

### HCV Market (2007-2017 January-November)



## Otobüs Pazarı (2007-2017 Ocak-Kasım)

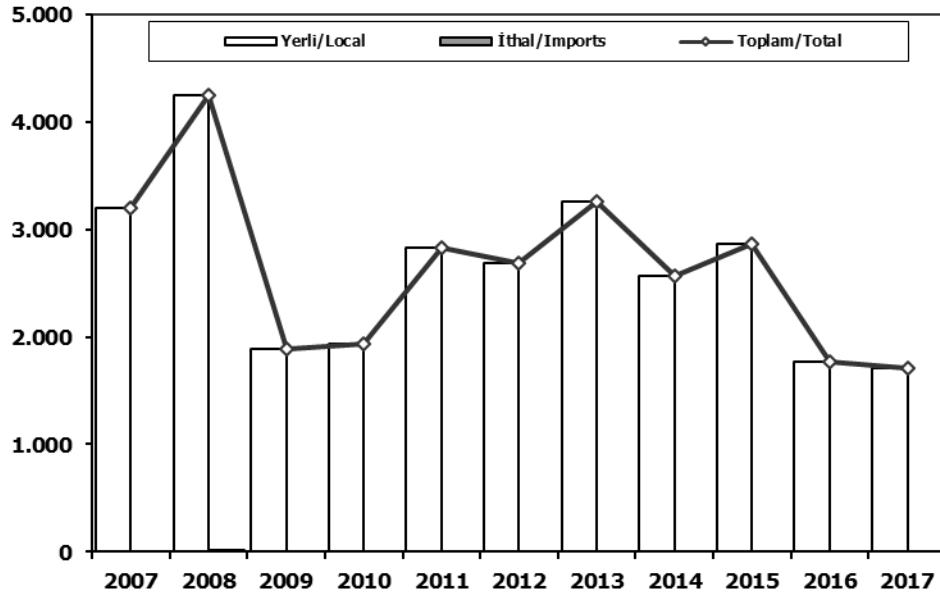
### Bus Market (2007-2017 January-November)



	2007	2008	2009	2010	2011	2012	2013	2014	2015	2016	2017		2007	2008	2009	2010	2011	2012	2013	2014	2015	2016	2017
<b>Yerli/Local</b>	25.077	22.518	12.418	18.186	29.068	25.211	26.151	23.999	24.285	13.977	12.492	<b>Yerli/Local</b>	1.209	1.238	1.292	1.188	2.133	1.986	3.736	1.083	1.653	1.129	671
<b>İthal/Imports</b>	9.217	7.663	3.862	7.708	10.989	8.935	7.717	8.854	11.633	7.144	7.180	<b>İthal/Imports</b>	148	265	206	86	85	109	135	110	110	110	110
<b>Toplam/Total</b>	34.294	30.181	16.280	25.894	40.057	34.146	33.868	32.853	35.918	21.121	19.672	<b>Toplam/Total</b>	1.357	1.503	1.498	1.274	2.218	2.095	3.871	1.193	1.763	1.239	781
<b>İthalat/Imports (%)</b>	27	25	24	30	27	26	23	27	32	34	36	<b>İthalat/Imports (%)</b>	11	18	14	7	4	5	3	9	6	9	14

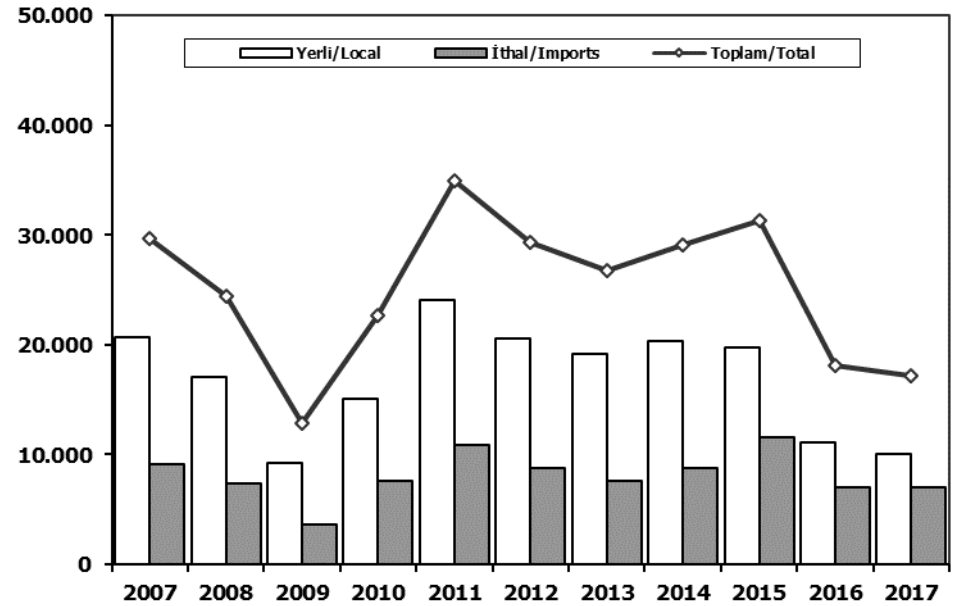
## Midibüs Pazarı (2007-2017 Ocak-Kasım) (7-9 mt / 25-35 Kişilik)

Midibus Market (2007-2017 January-November) (7-9 mt / 25-35 Passengers)



## Kamyon Pazarı (2007-2017 Ocak-Kasım)

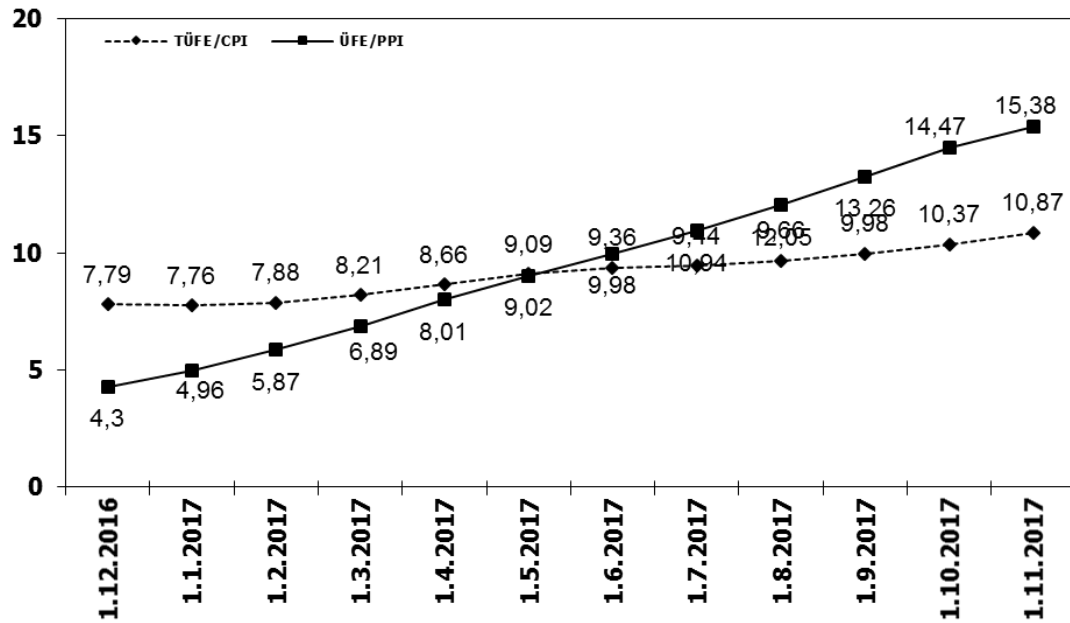
Truck Market (2007-2017 January-November)



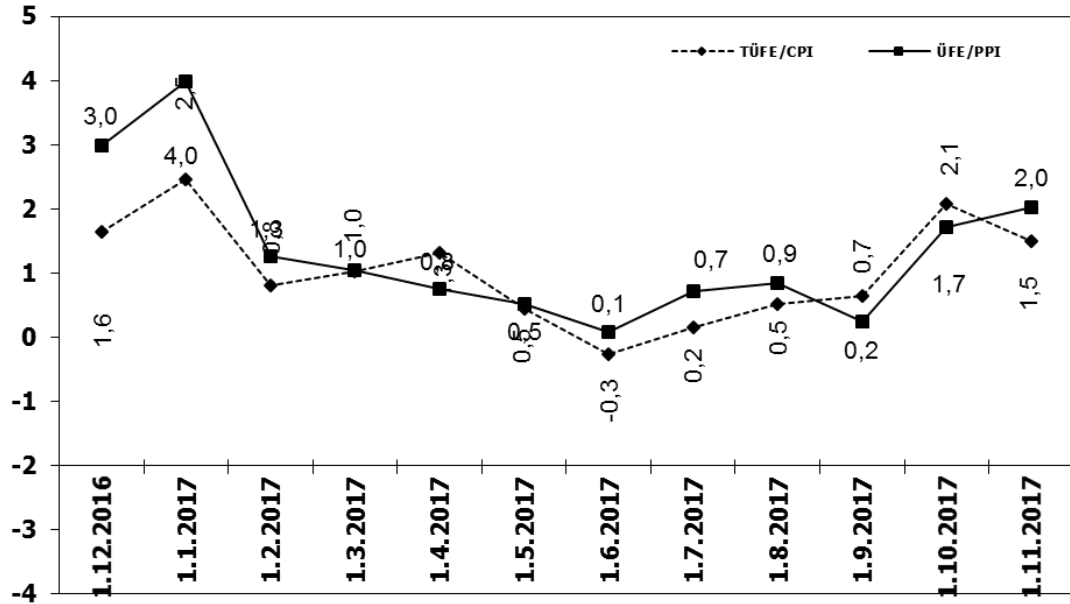
	2007	2008	2009	2010	2011	2012	2013	2014	2015	2016	2017
<b>Yerli/Local</b>	3.196	4.241	1.882	1.935	2.834	2.686	3.262	2.565	2.862	1.765	1.712
<b>İthal/Imports</b>	0	11	0	0	0	0	0	0	0	0	0
<b>Toplam/Total</b>	3.196	4.252	1.882	1.935	2.834	2.686	3.262	2.565	2.862	1.765	1.712
<b>İthalat/Imports (%)</b>	0	0	0	0	0	0	0	0	0	0	0

	2007	2008	2009	2010	2011	2012	2013	2014	2015	2016	2017
<b>Yerli/Local</b>	20.672	17.039	9.244	15.063	24.101	20.539	19.153	20.351	19.770	11.083	10.109
<b>İthal/Imports</b>	9.069	7.387	3.656	7.622	10.904	8.826	7.582	8.744	11.523	7.034	7.070
<b>Toplam/Total</b>	29.741	24.426	12.900	22.685	35.005	29.365	26.735	29.095	31.293	18.117	17.179
<b>İthalat/Imports (%)</b>	30	30	28	34	31	30	28	30	37	39	41

## TÜFE ve ÜFE'nin 12 Aylık Ort. Değişimi (%) CPI and PPI 12 Months Avr. Changes (%)



## TÜFE ve ÜFE'nin Aylık Değişimi (%) CPI and PPI Monthly Changes (%)



**OTOMOTİV SANAYİ DİŐ SATIŐLARI - 2017**  
**AUTOMOTIVE INDUSTRY EXPORTS SALES - 2017**

<b>TİPLER-Types</b>	Ocak January	Őubat February	Mart March	Nisan April	Mayıs May	Haziran June	Temmuz July	Ađustos August	Eylöl September	Ekim October	Kasım November	Aralık December	<b>TOPLAM Total</b>
<b>Otomobil</b>	<b>76.492</b>	<b>81.990</b>	<b>96.314</b>	<b>82.586</b>	<b>87.536</b>	<b>79.544</b>	<b>75.618</b>	<b>44.945</b>	<b>64.166</b>	<b>79.904</b>	<b>74.966</b>	<b>0</b>	<b>844.061</b>
OTOMOBİL-Pass. Car	76.492	81.990	96.314	82.586	87.536	79.544	75.618	44.945	64.166	79.904	74.966	0	844.061
<b>TİCARİ ARAÇ</b>	<b>26.878</b>	<b>34.073</b>	<b>39.652</b>	<b>34.641</b>	<b>38.152</b>	<b>36.425</b>	<b>38.452</b>	<b>16.428</b>	<b>30.582</b>	<b>38.961</b>	<b>37.672</b>	<b>0</b>	<b>371.916</b>
* KAMYONET-Pick Up	23.417	29.632	33.496	29.383	32.321	30.570	32.295	13.362	25.985	33.076	32.619	0	316.156
* KAMYON-Truck	25	538	885	664	813	814	785	372	634	623	784	0	6.937
* MIDİBÜŐ-Midibus	18	59	46	33	52	99	30	59	51	60	47	0	554
* MINİBÜŐ-Minibus	3.045	3.220	4.570	3.933	4.294	4.358	4.712	2.102	3.348	4.658	3.620	0	41.860
* OTOBÜŐ-Bus	373	624	655	628	672	584	630	533	564	544	602	0	6.409
<b>Traktör</b>	<b>989</b>	<b>885</b>	<b>1.409</b>	<b>1.111</b>	<b>1.056</b>	<b>1.174</b>	<b>1.198</b>	<b>1.268</b>	<b>1.076</b>	<b>1.148</b>	<b>957</b>	<b>0</b>	<b>12.271</b>
TRAKTÖR-F.Tractor	989	885	1.409	1.111	1.056	1.174	1.198	1.268	1.076	1.148	957	0	12.271
<b>TOPLAM-Total</b>	<b>104.359</b>	<b>116.948</b>	<b>137.375</b>	<b>118.338</b>	<b>126.744</b>	<b>117.143</b>	<b>115.268</b>	<b>62.641</b>	<b>95.824</b>	<b>120.013</b>	<b>113.595</b>	<b>0</b>	<b>1.228.248</b>

**Otomobil**

<b>FİRMALAR-Companies</b>	Ocak January	Őubat February	Mart March	Nisan April	Mayıs May	Haziran June	Temmuz July	Ađustos August	Eylöl September	Ekim October	Kasım November	Aralık December	<b>TOPLAM Total</b>
FORD OTOSAN	1.855	1.431	1.849	1.329	1.513	1.925	1.287	2	2.002	2.576	2.419	0	18.188
HONDA TÜRKİYE	490	196	1.074	795	1.101	950	772	764	871	1.212	0	0	8.779
HYUNDAI ASSAN	15.119	17.105	19.168	18.719	19.640	17.231	13.500	15.200	16.600	18.100	10.843	0	181.225
ÖYAK RENAULT	22.534	25.360	31.383	27.062	26.589	24.673	25.234	12.721	17.631	24.232	27.661	0	265.080
TOFAŐ	14.372	18.619	18.693	14.237	15.375	12.766	13.319	4.104	10.353	12.223	11.722	0	145.783
TOYOTA	22.122	19.279	24.147	20.444	23.318	21.999	21.624	12.146	16.816	21.902	21.109	0	224.906
<b>TOPLAM-Total</b>	<b>76.492</b>	<b>81.990</b>	<b>96.314</b>	<b>82.586</b>	<b>87.536</b>	<b>79.544</b>	<b>75.618</b>	<b>44.945</b>	<b>64.166</b>	<b>79.904</b>	<b>74.966</b>	<b>0</b>	<b>844.061</b>

**Kamyonet**

<b>FİRMALAR-Companies</b>	Ocak January	Őubat February	Mart March	Nisan April	Mayıs May	Haziran June	Temmuz July	Ađustos August	Eylöl September	Ekim October	Kasım November	Aralık December	<b>TOPLAM Total</b>
FORD OTOSAN	18.002	18.340	23.102	19.638	20.299	18.945	21.006	8.116	16.383	22.445	21.716	0	207.992
KARSAN	0	117	91	232	331	254	181	196	259	406	299	0	2.366
OTOKAR	0	0	46	0	6	30	0	0	16	13	20	0	131
TOFAŐ	5.415	11.175	10.257	9.513	11.685	11.341	11.108	5.050	9.327	10.212	10.584	0	105.667
<b>TOPLAM-Total</b>	<b>23.417</b>	<b>29.632</b>	<b>33.496</b>	<b>29.383</b>	<b>32.321</b>	<b>30.570</b>	<b>32.295</b>	<b>13.362</b>	<b>25.985</b>	<b>33.076</b>	<b>32.619</b>	<b>0</b>	<b>316.156</b>

**Minibüs**

<b>FİRMALAR-Companies</b>	Ocak January	Őubat February	Mart March	Nisan April	Mayıs May	Haziran June	Temmuz July	Ađustos August	Eylöl September	Ekim October	Kasım November	Aralık December	<b>TOPLAM Total</b>
FORD OTOSAN	3.044	3.220	4.547	3.929	4.292	4.345	4.708	2.098	3.335	4.629	3.620	0	41.767
KARSAN	1	0	23	4	2	13	4	4	13	29	0	0	93
<b>TOPLAM-Total</b>	<b>3.045</b>	<b>3.220</b>	<b>4.570</b>	<b>3.933</b>	<b>4.294</b>	<b>4.358</b>	<b>4.712</b>	<b>2.102</b>	<b>3.348</b>	<b>4.658</b>	<b>3.620</b>	<b>0</b>	<b>41.860</b>

**Kamyon**

<b>FİRMALAR-Companies</b>	Ocak January	Őubat February	Mart March	Nisan April	Mayıs May	Haziran June	Temmuz July	Ađustos August	Eylöl September	Ekim October	Kasım November	Aralık December	<b>TOPLAM Total</b>
A.I.O.S.	0	6	0	0	0	0	0	0	0	0	0	0	6
FORD OTOSAN	25	65	71	87	74	63	94	90	78	131	143	0	921
M. BENZ TÜRK	0	467	814	577	739	751	691	282	556	492	641	0	6.010
<b>TOPLAM-Total</b>	<b>25</b>	<b>538</b>	<b>885</b>	<b>664</b>	<b>813</b>	<b>814</b>	<b>785</b>	<b>372</b>	<b>634</b>	<b>623</b>	<b>784</b>	<b>0</b>	<b>6.937</b>

**Midibüs**

<b>FİRMALAR-Companies</b>	Ocak January	Őubat February	Mart March	Nisan April	Mayıs May	Haziran June	Temmuz July	Ađustos August	Eylöl September	Ekim October	Kasım November	Aralık December	<b>TOPLAM Total</b>
A.I.O.S.	4	39	19	9	44	43	3	22	13	27	17	0	240
KARSAN	1	0	0	0	0	8	10	11	10	0	1	0	41
OTOKAR	13	18	16	16	4	17	13	23	20	20	18	0	178
TEMSA	0	2	11	8	4	31	4	3	8	13	11	0	95
<b>TOPLAM-Total</b>	<b>18</b>	<b>59</b>	<b>46</b>	<b>33</b>	<b>52</b>	<b>99</b>	<b>30</b>	<b>59</b>	<b>51</b>	<b>60</b>	<b>47</b>	<b>0</b>	<b>554</b>

**Otobüs**

<b>FİRMALAR-Companies</b>	Ocak January	Őubat February	Mart March	Nisan April	Mayıs May	Haziran June	Temmuz July	Ađustos August	Eylöl September	Ekim October	Kasım November	Aralık December	<b>TOPLAM Total</b>
A.I.O.S.	0	13	46	8	7	8	14	26	64	50	60	0	296
KARSAN	0	0	1	0	0	20	0	25	52	7	15	0	120
M. BENZ TÜRK	191	382	359	318	373	312	331	215	139	230	255	0	3.105
MAN TÜRKİYE	129	199	191	229	176	147	149	105	165	165	173	0	1.828
OTOKAR	41	10	7	15	23	36	60	47	21	30	30	0	320
TEMSA	12	20	51	58	93	61	76	115	123	62	69	0	740
<b>TOPLAM-Total</b>	<b>373</b>	<b>624</b>	<b>655</b>	<b>628</b>	<b>672</b>	<b>584</b>	<b>630</b>	<b>533</b>	<b>564</b>	<b>544</b>	<b>602</b>	<b>0</b>	<b>6.409</b>

**Traktör**

<b>FİRMALAR-Companies</b>	Ocak January	Őubat February	Mart March	Nisan April	Mayıs May	Haziran June	Temmuz July	Ađustos August	Eylöl September	Ekim October	Kasım November	Aralık December	<b>TOPLAM Total</b>
HATTAT TRAKTÖR	84	15	173	98	128	77	92	161	70	119	48	0	1.065
TÜRK TRAKTÖR	905	870	1.236	1.013	928	1.097	1.106	1.107	1.006	1.029	909	0	11.206
<b>TOPLAM-Total</b>	<b>989</b>	<b>885</b>	<b>1.409</b>	<b>1.111</b>	<b>1.056</b>	<b>1.174</b>	<b>1.198</b>	<b>1.268</b>	<b>1.076</b>	<b>1.148</b>	<b>957</b>	<b>0</b>	<b>12.271</b>

2017 YILI İTHAL OTOMOBİL SATIŞLARI / P.Cars Import 2017

	2016 TOPLAMI 2016 Total	1	2	3	4	5	6	7	8	9	10	11	12	2017 TOPLAMI 2017 Total
VOLKSWAGEN	101.761	3.059	4.903	6.729	6.672	8.131	7.213	7.006	6.957	7.831	7.956	10.228		76.685
OPEL	55.471	1.577	1.652	4.014	3.838	3.654	4.055	4.365	3.564	2.966	4.359	6.069		40.113
DACIA	42.109	1.471	2.303	3.534	3.557	3.356	2.933	3.933	3.467	2.916	3.521	4.238		35.229
RENAULT	42.422	844	1.462	3.148	2.879	3.630	3.230	3.673	3.714	2.775	2.562	4.283		32.200
FORD	33.453	1.175	1.199	2.760	2.902	3.992	3.425	3.067	2.826	2.017	3.008	3.460		29.831
NISSAN	30.513	1.154	1.519	2.083	2.254	2.835	2.385	2.460	2.429	1.603	4.132	3.964		26.818
PEUGEOT	25.440	637	1.884	2.139	2.604	2.651	2.799	2.030	2.412	1.969	3.004	3.258		25.387
HYUNDAI	26.463	1.413	1.393	2.563	2.003	1.904	2.179	1.871	2.299	2.232	2.662	2.962		23.481
MERCEDES-BENZ	32.666	499	1.078	2.308	2.106	2.213	2.313	2.300	2.324	2.312	2.797	2.409		22.659
SKODA	28.876	925	1.225	1.335	2.144	1.655	1.931	2.133	1.937	2.344	2.850	2.574		21.053
AUDI	22.005	625	702	1.287	1.673	2.109	2.177	1.370	1.055	1.352	3.785	2.326		18.461
BMW	27.166	570	900	1.346	877	1.814	1.409	1.904	1.285	1.487	2.075	2.399		16.066
SEAT	20.637	536	623	1.103	1.583	1.651	2.436	1.789	1.030	763	1.545	1.642		14.701
CITROEN	17.041	515	761	1.765	1.654	1.504	1.473	1.339	1.321	1.433	1.544	745		14.054
KIA	14.398	426	481	630	1.097	1.110	1.003	1.065	920	831	1.269	969		9.801
TOYOTA	11.513	439	413	439	427	484	707	852	501	481	897	633		6.273
HONDA	8.714	206	255	642	618	660	666	583	510	616	648	701		6.105
VOLVO	4.100	155	213	232	340	400	374	275	340	352	425	650		3.756
SUZUKI	3.931	79	143	260	206	324	296	446	458	431	475	427		3.545
JEEP	2.192	111	104	162	184	179	188	198	174	238	243	246		2.027
FIAT	3.103	106	187	229	185	178	145	117	184	111	116	198		1.756
LAND ROVER	2.108	34	72	104	175	211	176	126	170	186	208	176		1.638
SUBARU	1.584	67	40	195	129	30	216	103	131	118	166	262		1.457
MINI	1.688	55	81	82	80	96	130	93	133	137	154	229		1.270
MAZDA	1.427	54	76	109	100	139	161	117	120	91	100	131		1.198
PORSCHE	827	66	61	61	35	31	62	82	37	47	55	68		605
SSANGYONG	507	10	20	32	27	32	66	32	24	28	20	36		327
MIITSUBISHI	709	28	43	50	45	24	16	19	25	15	22	21		308
JAGUAR	481	6	10	23	36	49	23	39	34	34	32	20		306
ALFA ROMEO	634	17	43	59	27	24	24	18	19	15	21	26		293
SMART	192	2	7	20	19	28	8	10	6	2	2	0		104
INFINITI	120	6	12	8	2	16	10	5	13	6	12	10		100
LEXUS	64	16	3	6	11	9	2	3	2	21	1	18		92
DS	400	9	0	1	13	5	1	38	1	21	0	0		89
MASERATI	72	2	7	3	5	2	4	9	6	6	5	17		66
ASTON MARTIN	29	1	2	3	2	2	2	2	1	0	2	1		18
FERRARI	18	0	1	3	1	0	1	0	3	0	2	2		13
BENTLEY	9	1	2	0	1	1	1	0	2	3	1	0		12
LAMBORGHINI	7	0	0	0	1	1	1	1	0	0	0	2		6
CHERY	144	0	0	0	0	0	0	0	0	0	0	0		0
PROTON	51	0	0	0	0	0	0	0	0	0	0	0		0
<b>TOPLAM</b>	<b>565.045</b>	<b>16.896</b>	<b>23.880</b>	<b>39.467</b>	<b>40.512</b>	<b>45.134</b>	<b>44.241</b>	<b>43.473</b>	<b>40.434</b>	<b>37.790</b>	<b>50.676</b>	<b>55.400</b>	<b>0</b>	<b>437.903</b>

2017 YILI İTHAL HAFİF TİCARİ ARAÇ SATIŞLARI / Light Commercial Vehicles Import 2017

	2016 TOPLAMI 2016 Total	1	2	3	4	5	6	7	8	9	10	11	12	2017 TOPLAMI 2017 Total
VOLKSWAGEN	32.772	1.255	1.599	2.121	2.362	2.524	2.218	2.376	2.405	2.396	2.538	2.709		24.503
RENAULT	15.091	519	718	1.327	1.238	1.268	1.098	1.499	1.375	1.260	1.697	2.009		14.008
PEUGEOT	8.402	157	351	990	739	965	726	885	805	652	1.044	1.495		8.809
MERCEDES-BENZ	8.070	343	496	687	742	781	767	814	845	741	732	703		7.651
CITROEN	6.884	438	669	424	807	1.147	1.176	479	682	480	733	294		7.329
DACIA	5.422	235	348	523	615	658	650	642	538	455	542	486		5.692
FIAT	5.885	257	448	490	602	405	380	526	677	616	526	632		5.559
TOYOTA	5.645	356	451	489	304	243	211	375	328	352	396	461		3.966
FORD	4.878	250	270	371	212	270	220	228	423	401	360	507		3.512
KIA	3.952	193	240	384	306	386	150	358	209	262	296	301		3.085
HYUNDAI	2.244	134	174	242	308	357	243	224	248	283	279	266		2.758
MIITSUBISHI	3.533	173	213	127	209	438	169	281	228	257	395	240		2.730
NISSAN	1.540	167	266	337	258	170	196	195	233	151	169	220		2.362
IVECO	2.175	146	133	250	205	210	152	171	221	229	208	269		2.194
SSANGYONG	254	9	4	21	12	15	51	56	49	18	5	6		246
SUZU	1.055	12	12	9	11	11	8	17	16	7	83	34		220
TATA	9	0	0	0	0	0	0	0	0	0	0	0		0
<b>TOPLAM</b>	<b>107.811</b>	<b>4.644</b>	<b>6.392</b>	<b>8.792</b>	<b>8.930</b>	<b>9.848</b>	<b>8.415</b>	<b>9.126</b>	<b>9.282</b>	<b>8.560</b>	<b>10.003</b>	<b>10.632</b>	<b>0</b>	<b>94.624</b>