



OTOMOTİV SANAYİİ DERNEĞİ
AUTOMOTIVE MANUFACTURERS ASSOCIATION

AYLIK RAPOR

Automotive Industry Monthly Report

Aralık / December 2017

- **Üretim/Production**
- **Satış/Sales**
- **İthalat/Imports**
- **İhracat/Exports**

OSD "OICA" Üyesidir



OSD is a Member of "OICA"

2017 Aralık Ayı Özeti / 2017 December Summary

		ARALIK/DECEMBER			YILLIK/YEARLY		
		2016	2017	2017/2016 (%)	2016	2017	2017/2016 (%)
Üretim/Production	Toplam/Total	156.115	130.079	-17	1.485.927	1.673.664	13
	Otomobil/P.Cars	106.963	72.993	-32	950.888	1.120.839	18
Pazar/Market	Toplam/Total	144.928	140.657	-3	1.007.857	980.277	-3
	Otomobil/P.Cars	108.044	99.694	-8	756.938	722.759	-5
İthalat/Import	Toplam/Total	91.990	84.701	-8	681.308	624.409	-8
	Otomobil/P.Cars	75.065	68.064	-9	565.045	505.968	-10
İhracat/Export	Toplam/Total	118.902	108.550	-9	1.141.382	1.332.794	17
	Otomobil/P.Cars	87.107	69.036	-21	745.709	921.354	24
İhracat / Export (\$)	Toplam/Total **	2.350.662.980	2.521.269.899	7	24.249.129.088	28.986.532.983	20
	Otomobil/P.Cars	1.086.655.270	987.577.553	-9	8.336.928.418	11.790.776.093	41

PARAMETRELER / PARAMETERS	ARALIK/DECEMBER			YILLIK/YEARLY		
	2016	2017	2017/2016 (%)	2016	2017	2017/2016 (%)
ÜFE/PPI	2,98	1,37	**	9,94	15,47	**
TÜFE/CPI	1,64	0,69	**	8,53	11,92	**
Sanayi Endeksi/Industry Index	3,26	1,34	**	12,07	16,64	**
\$ (*)	3,4813	3,8495	11	3,0053	3,6256	21
EURO (*)	3,6834	4,5962	25	3,3187	4,1030	24
Japon Yeni (*)	2,9992	3,4024	13	2,7441	3,2142	17

(*) Ortalama Değerler / Average Values

(**) Toplam Sanayi / Total Industry Including Components

*Raporda yer alan üretim adetleri yalnızca OSD üyelerinin verilerini göstermektedir.
Production units in this report only show the data of OSD members.*

2016/2017 Yılları Üretim

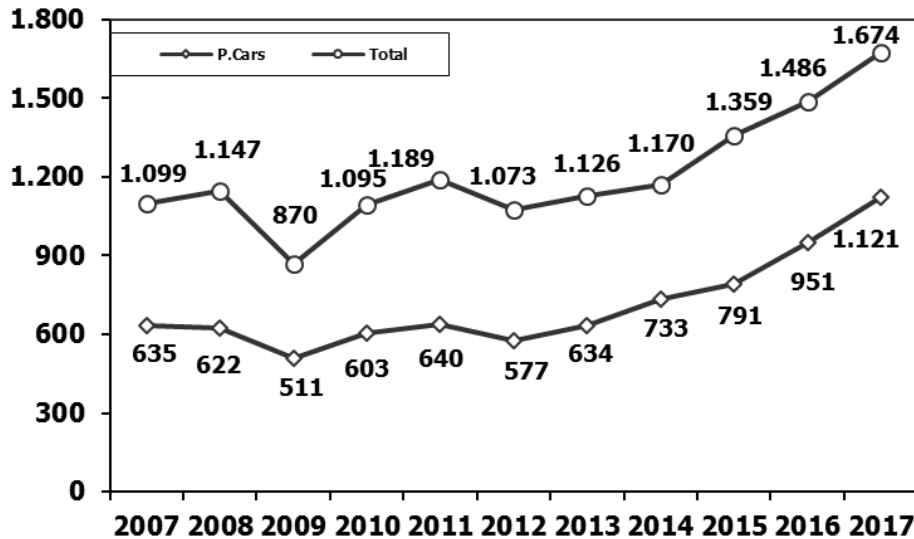
2016/2017 Production

K.KAMYON : AYA 3.5-12 Ton (L.Truck:GVW 3.5-12 Ton)

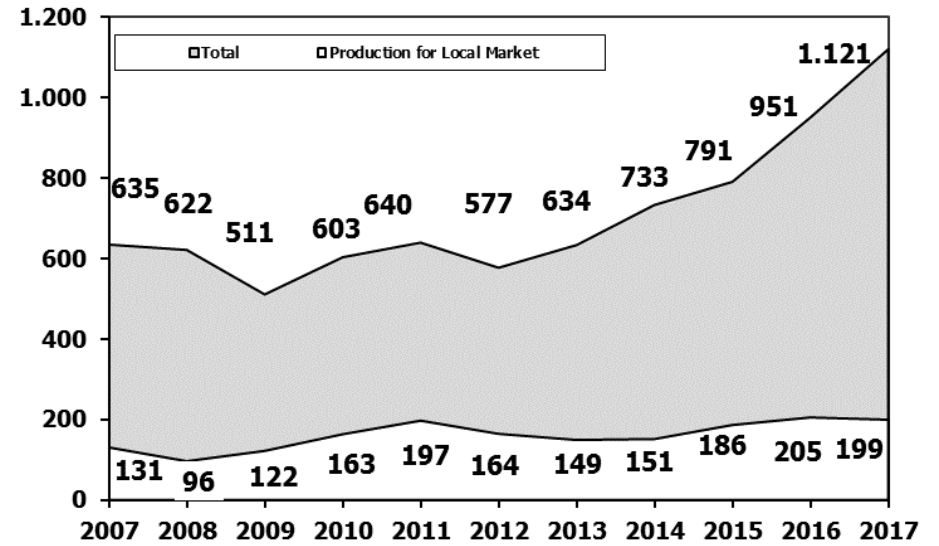
B.KAMYON : AYA 12 Ton'dan Büyük (M.Truck:GVW 12 Ton And Up)

ARAÇ TİPLERİ	ARALIK AYI ÜRETİMİ December Production		12 AYLIK ÜRETİM 12 Months Production		DEĞİŞİM % Percent Change %	
	2016	2017	2016	2017	ARALIK December	12 AY 12 Months
OTOMOBİL - Pass.Car	106.963	72.993	950.888	1.120.839	-32	18
TİCARİ ARAÇLAR - Commercial Vehicles	49.152	57.086	535.039	552.825	16	3
* B. KAMYON - H. Truck	903	2.218	14.826	19.386	146	31
* K. KAMYON - L. Truck	276	483	2.548	4.116	75	62
* KAMYONET - Pick Up	43.003	48.696	461.837	462.389	13	0
* OTOBÜS - Bus	495	557	8.083	8.166	13	1
* MİNİBÜS - Minibus	4.239	4.669	44.415	55.036	10	24
* MİDİBÜS - Midibus	236	463	3.330	3.732	96	12
TAŞIT ARAÇLARI TOPLAM - MV Total	156.115	130.079	1.485.927	1.673.664	-17	13
TRAKTÖR - F.Tractor	3.480	4.645	50.746	53.841	33	6
GENEL TOPLAM - Grand Total	159.595	134.724	1.536.673	1.727.505	-16	12

Toplam Üretim ve Otomobil Üretimi (x1000) (Ocak-Aralık)
Total & P.Cars Production (x1000) (January-December)

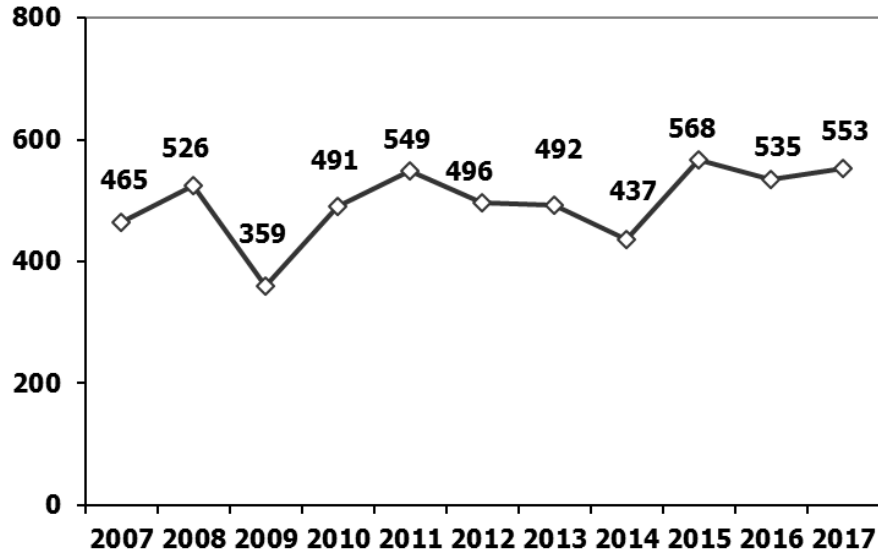


Otomobil Üretimi ve İhracat (x1000) (Ocak-Aralık)
P.Cars Production & Exports (x1000) (January-December)



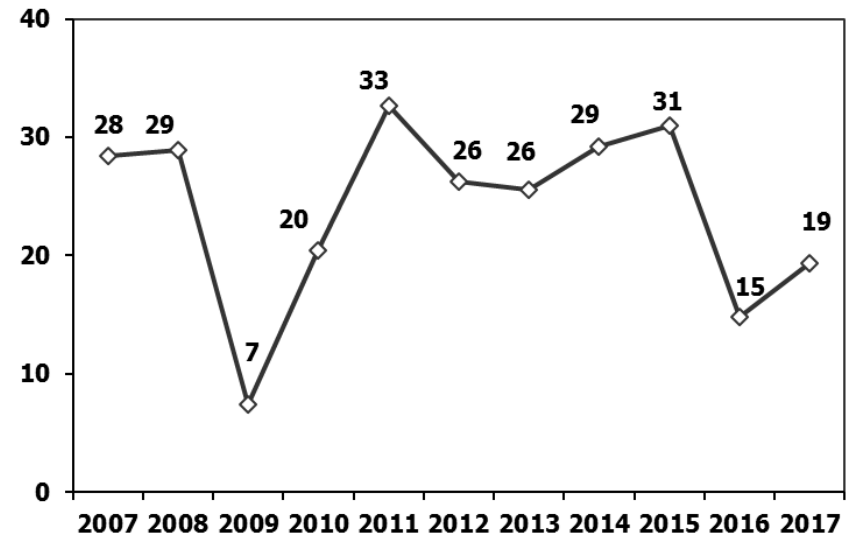
Ticari Araç Üretimi (x1000) (Ocak-Aralık)

Commercial Vehicle Production (x1000) (January-December)



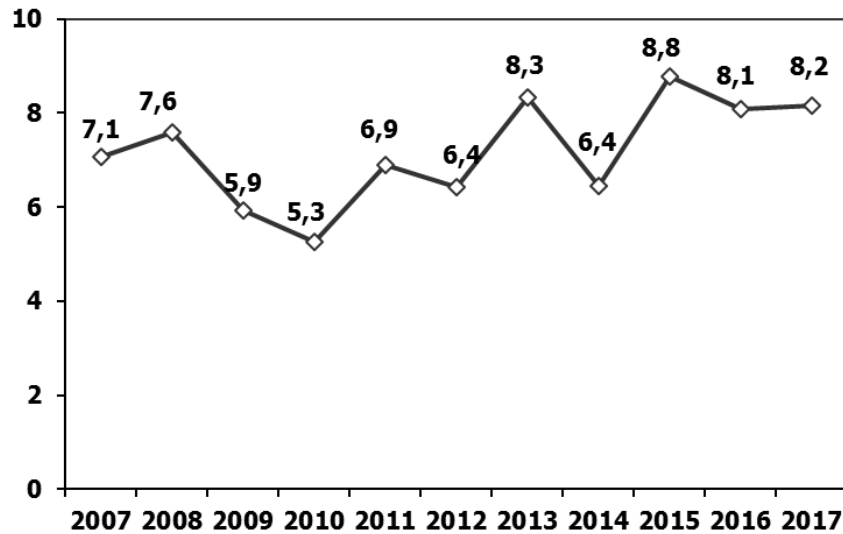
(AYA >12 Ton) Büyük Kamyon Üretimi (x1000) (Ocak-Aralık)

(GVW >12 Ton) Heavy Truck Production (x1000) (January-December)



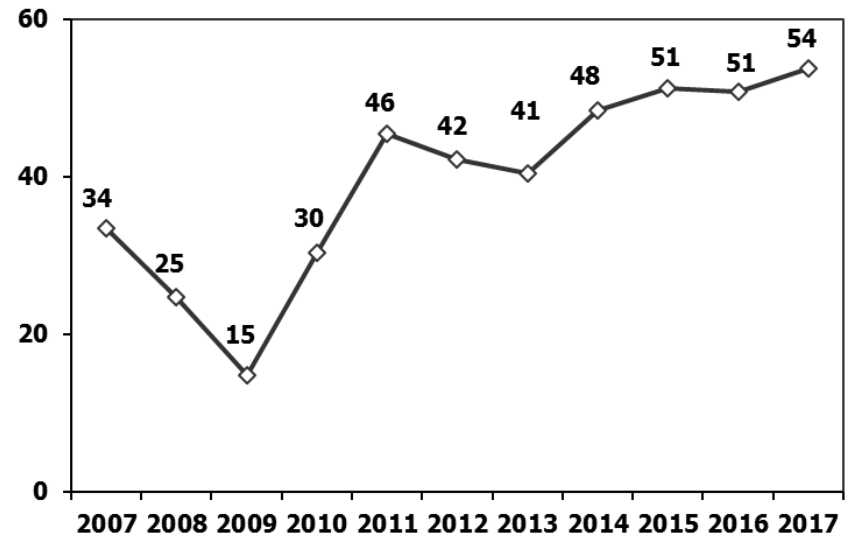
Otobüs Üretimi (x1000) (Ocak-Aralık)

Bus Production (x1000) (January-December)



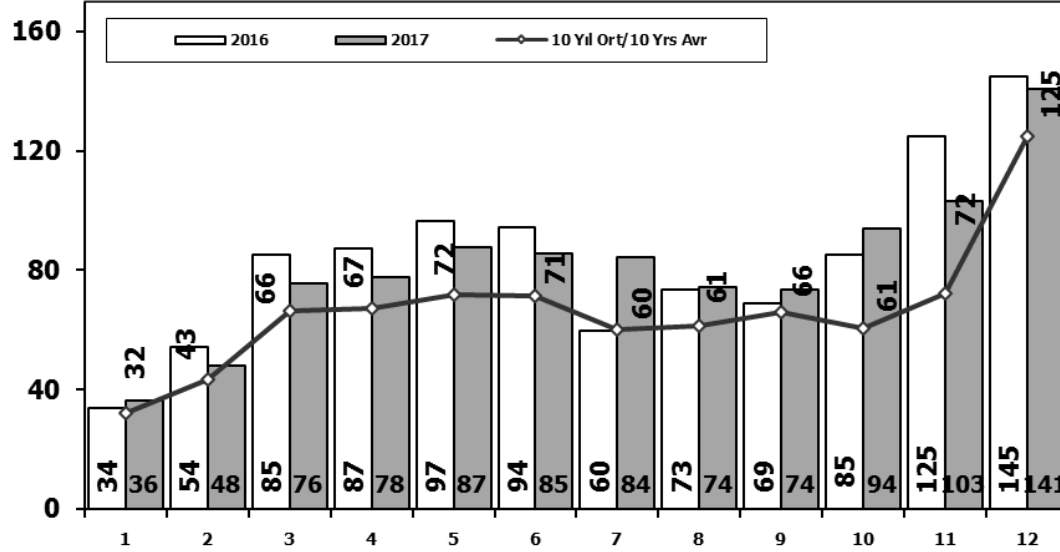
Traktör Üretimi (x1000) (Ocak-Aralık)

F. Tractor Production (x1000) (January-December)



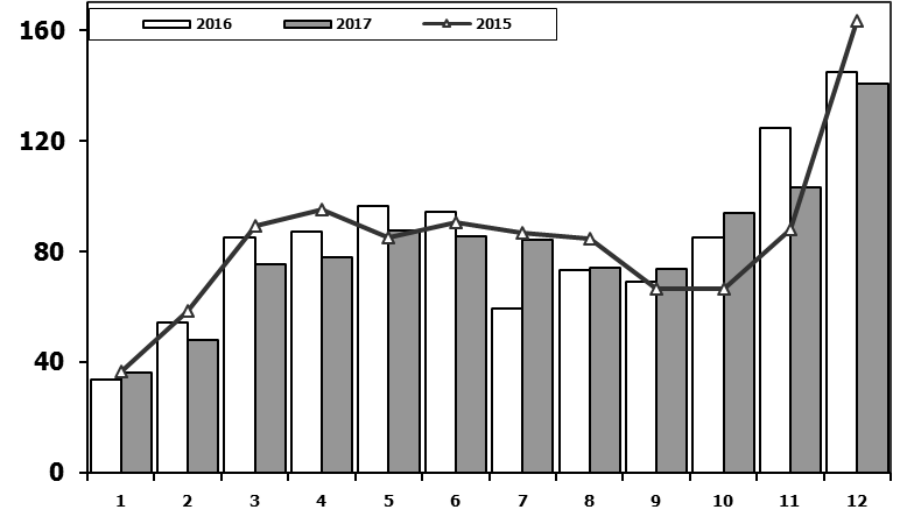
Toplam Pazarın Analizi (x1000)

Total Market Analysis (x1000)



Toplam Pazar (x1000)

Total Market (x1000)

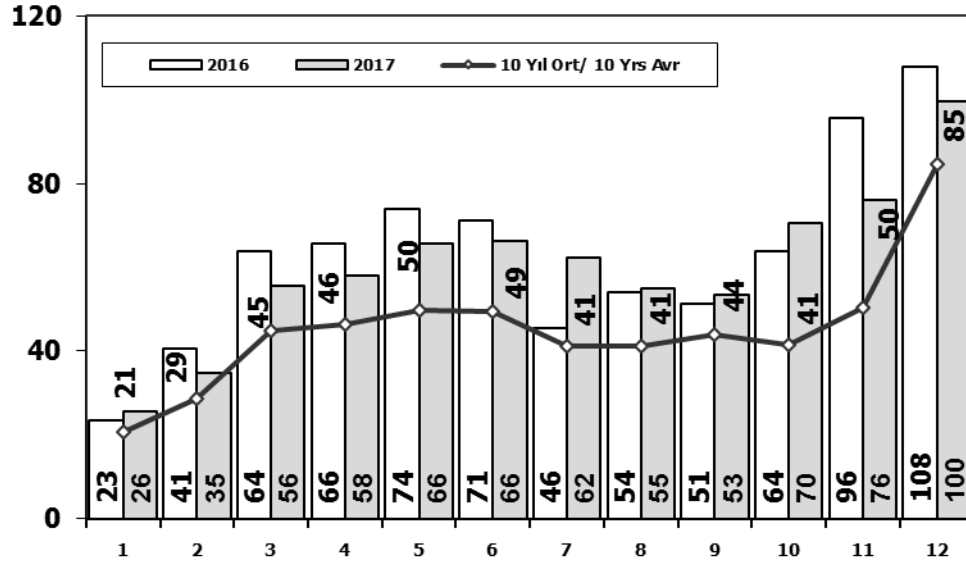


Aylar / Months	10 Yil Ort. 10 Yrs Avr. (x1000)	2017 (x1000)	%
1	32,1	36,1	12,6
2	43,2	48,1	11,4
3	66,3	75,6	14,0
4	67,2	77,8	15,8
5	71,8	87,5	21,8
6	71,5	85,4	19,5
7	60,2	84,2	39,8
8	61,3	74,3	21,2
9	66,1	73,6	11,4
10	60,7	93,8	54,6
11	72,4	103,1	42,5
12	125,0	140,7	12,5
Total	797,8	980,3	22,9

	1	2	3	4	5	6	7	8	9	10	11	12	Total
2007	24.950	31.702	45.488	45.633	51.255	51.661	50.117	54.171	50.078	56.058	67.017	106.076	634.206
2008	33.792	38.121	56.814	50.967	51.627	49.393	44.692	46.592	46.829	35.147	28.152	44.418	526.544
2009	20.631	22.846	56.531	54.426	64.887	63.102	30.246	37.092	83.403	22.117	29.202	91.386	575.869
2010	21.050	32.313	53.828	57.079	61.628	63.390	63.718	64.645	66.601	76.780	77.406	154.734	793.172
2011	47.658	62.348	83.333	82.071	85.093	85.863	65.364	61.378	63.643	72.640	67.195	134.281	910.867
2012	31.219	43.827	68.957	66.014	74.820	74.781	65.122	60.848	73.197	62.677	75.045	121.113	817.620
2013	37.140	50.931	72.688	77.015	85.421	77.771	74.726	67.383	71.037	60.399	83.017	135.596	893.124
2014	34.225	37.308	50.964	56.766	61.909	63.952	62.206	62.839	70.180	69.259	83.937	153.941	807.486
2015	36.576	58.533	89.121	95.431	85.145	90.463	86.625	84.683	66.622	66.520	88.043	163.432	1.011.194
2016	33.740	54.223	85.214	87.041	96.576	94.203	59.505	73.269	69.068	85.251	124.839	144.928	1.007.857
2017	36.146	48.141	75.580	77.848	87.476	85.416	84.189	74.295	73.602	93.806	103.121	140.657	980.277

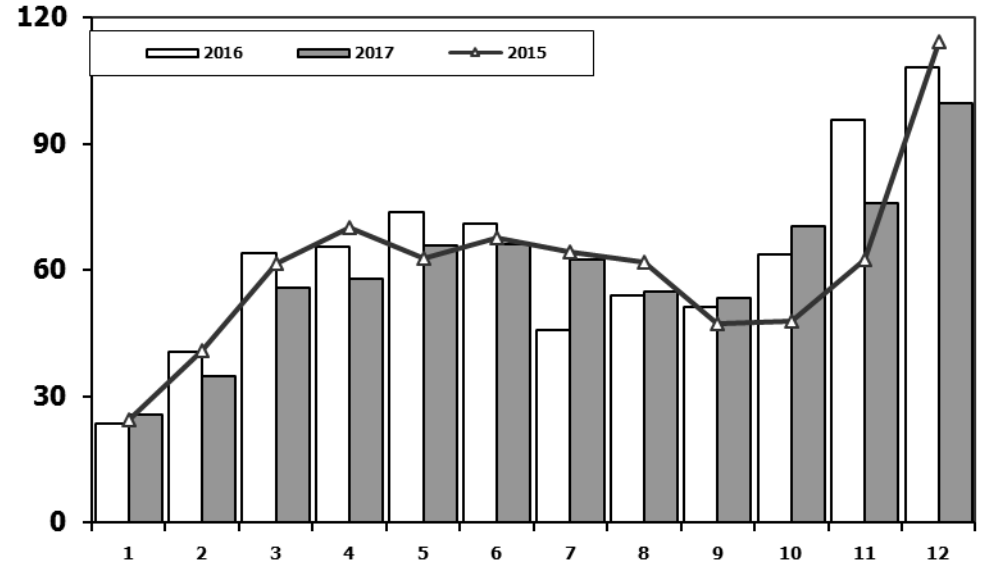
Otomobil Pazarının Analizi (x1000)

P.Cars Market Analysis (x1000)



Otomobil Pazarı (x1000)

P.Cars Market (x1000)

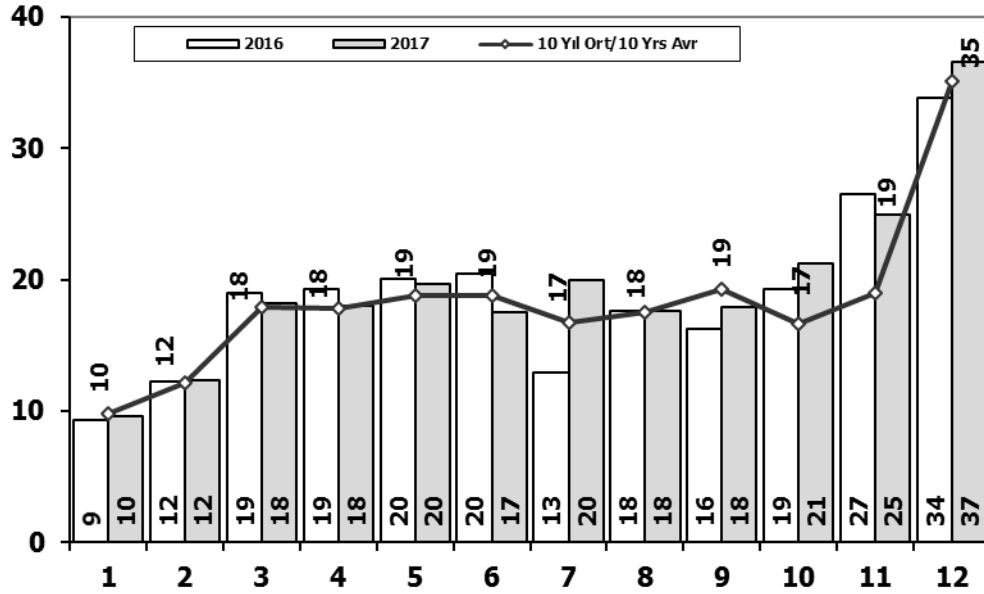


Aylar / Months	10 Yil Ort. 10 Yrs Avr. (x1000)	2017 (x1000)	%
1	20,7	25,7	24,4
2	28,7	34,7	20,7
3	45,0	55,6	23,7
4	46,3	58,0	25,2
5	49,7	65,8	32,3
6	49,4	66,2	33,9
7	41,2	62,4	51,4
8	41,2	54,9	33,3
9	43,9	53,4	21,6
10	41,4	70,5	70,1
11	50,4	76,0	50,7
12	84,8	99,7	17,6
Total	542,7	722,8	33,2

	1	2	3	4	5	6	7	8	9	10	11	12	Total
2007	13.186	17.212	24.336	25.204	29.067	30.126	28.246	28.469	27.662	32.569	39.643	61.745	357.465
2008	18.588	21.196	34.147	30.313	31.477	28.724	25.530	26.102	27.053	19.788	17.201	25.879	305.998
2009	13.173	14.492	40.622	36.202	44.188	41.019	16.637	22.537	52.162	13.828	17.781	57.178	369.819
2010	12.594	20.651	33.958	36.549	40.467	42.086	41.399	42.222	42.477	47.859	50.061	99.461	509.784
2011	29.868	39.004	54.023	53.835	56.302	56.714	43.518	38.875	39.964	47.508	44.951	88.957	593.519
2012	21.077	29.189	47.270	45.645	50.460	50.849	44.531	41.236	49.360	43.440	52.297	80.926	556.280
2013	25.835	36.814	51.785	56.999	62.383	58.290	55.712	51.611	52.925	46.985	64.117	101.199	664.655
2014	24.368	27.167	37.812	42.769	46.379	47.278	46.602	45.131	49.262	50.814	59.695	110.054	587.331
2015	24.498	40.817	61.676	70.211	62.878	67.766	64.218	61.753	47.088	47.954	62.397	114.340	725.596
2016	23.358	40.588	63.975	65.618	73.832	71.111	45.566	53.977	51.340	63.746	95.783	108.044	756.938
2017	25.689	34.658	55.616	57.998	65.799	66.164	62.384	54.890	53.423	70.488	75.956	99.694	722.759

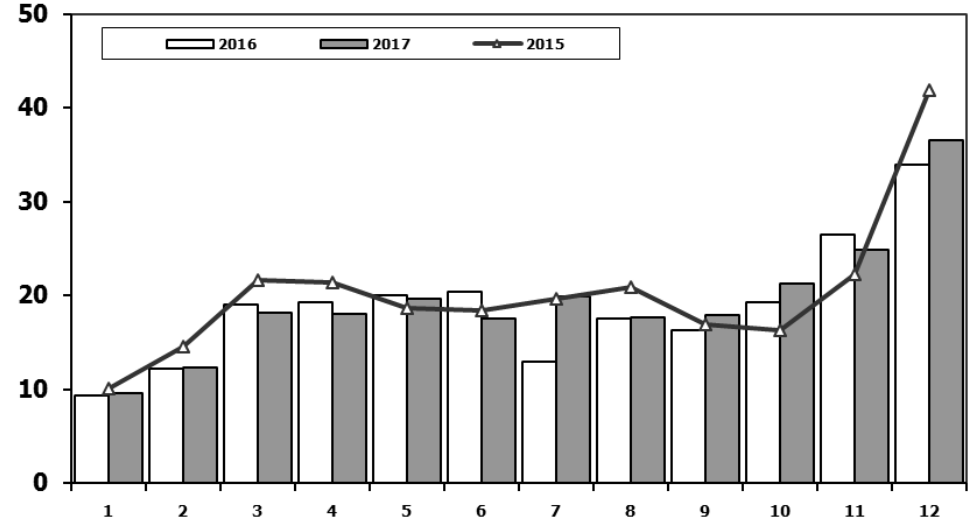
Hafif Ticari Araç Pazarının Analizi (x1000)

LCV Market Analysis (x1000)



Hafif Ticari Araç Pazarı (x1000)

LCV Total Market (x1000)

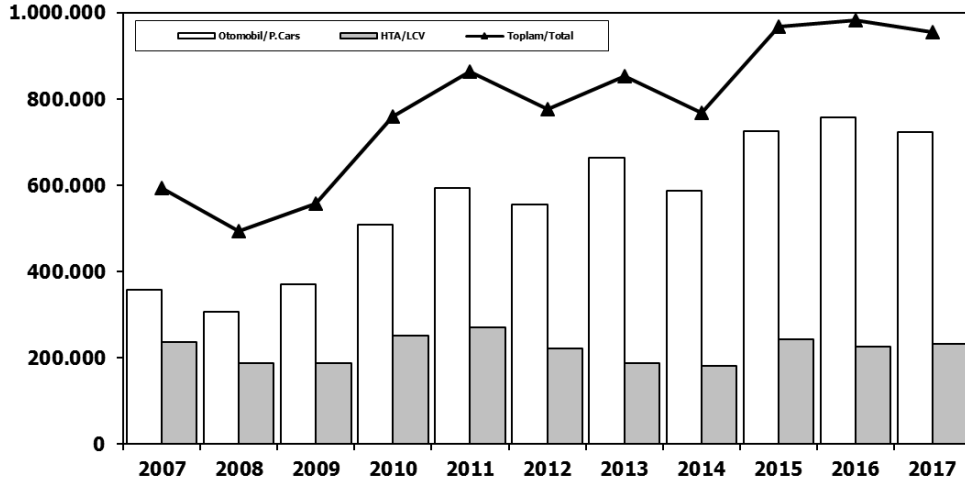


Aylar / Months	10 Yil Ort. 10 Yrs Avr. (x1000)	2017 (x1000)	%
1	9,8	9,6	-1,5
2	12,2	12,3	1,1
3	17,9	18,2	1,8
4	17,8	18,0	0,9
5	18,8	19,6	4,3
6	18,8	17,5	-6,7
7	16,7	19,9	19,2
8	17,6	17,6	0,5
9	19,2	17,9	-6,8
10	16,7	21,3	27,5
11	19,0	24,9	31,2
12	35,1	36,5	4,2
Total	219,4	233,4	6,4

	1	2	3	4	5	6	7	8	9	10	11	12	Total
2007	9.931	11.972	17.554	17.162	18.871	18.548	19.244	22.089	18.919	20.156	23.670	39.181	237.297
2008	12.939	14.055	19.502	17.388	17.121	17.600	16.626	17.568	16.879	13.096	9.052	16.199	188.025
2009	6.433	7.250	14.489	16.438	19.003	20.048	12.208	13.072	29.235	7.205	10.181	31.745	187.307
2010	7.501	10.521	17.811	18.397	18.910	18.810	19.946	19.542	21.337	25.545	23.901	48.908	251.129
2011	15.024	19.659	24.380	23.860	24.344	24.859	19.526	19.531	20.165	21.913	18.706	38.953	270.920
2012	8.468	12.135	17.614	17.304	20.403	20.218	17.773	16.912	20.269	16.498	19.413	34.474	221.481
2013	9.688	11.493	16.989	16.576	19.085	15.806	15.884	13.432	15.038	11.029	15.184	28.519	188.723
2014	8.302	7.854	9.769	10.536	11.742	12.885	13.305	15.068	17.269	15.759	20.926	36.935	180.350
2015	10.117	14.514	21.626	21.391	18.664	18.392	19.618	20.824	16.937	16.301	22.204	41.833	242.421
2016	9.355	12.237	18.973	19.269	20.072	20.429	12.967	17.579	16.253	19.254	26.526	33.868	226.782
2017	9.634	12.307	18.186	17.990	19.623	17.494	19.913	17.646	17.929	21.264	24.903	36.546	233.435

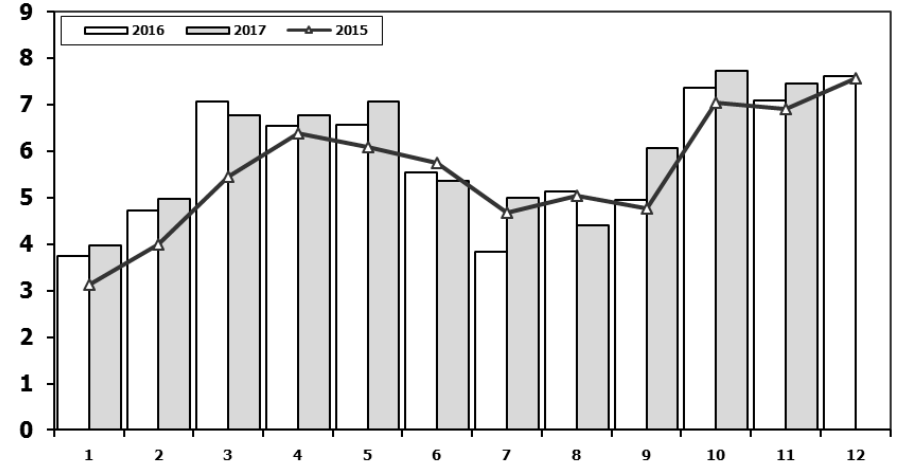
Hafif Araç Pazarı (AYA < 3.5 Ton)

Light Vehicle Market (GVW < 3.5 Ton)



Traktör Pazarı (x1000)

F.Tractor Market (x1000)



	2007	2008	2009	2010	2011	2012	2013	2014	2015	2016	2017
Otomobil/P.Cars	357.465	305.998	369.819	509.784	593.519	556.280	664.655	587.331	725.596	756.938	722.759
HTA/LCV	237.297	188.025	187.307	251.129	270.920	221.481	188.723	180.350	242.421	226.782	233.435
Toplam/Total	594.762	494.023	557.126	760.913	864.439	777.761	853.378	767.681	968.017	983.720	956.194
HTA/LCV (%)	40	38	34	33	31	28	22	23	25	23	24

	1	2	3	4	5	6	7	8	9	10	11	12	11 Ay/Mo	Total
2007	2.816	2.244	3.053	2.657	3.188	3.141	2.497	2.381	3.025	2.755	3.549	3.097	31.306	34.403
2008	2.770	1.855	3.395	3.081	2.769	2.400	2.232	2.485	1.856	1.773	1.305	1.101	25.921	27.022
2009	717	572	688	1.070	1.297	1.256	1.054	1.183	1.117	1.356	1.304	2.144	11.614	13.758
2010	1.111	1.991	2.330	3.039	2.567	2.638	1.965	3.019	2.806	4.424	3.978	6.168	29.868	36.036
2011	2.975	5.242	5.927	5.358	6.016	6.335	4.534	4.051	4.140	5.828	4.943	4.992	55.349	60.341
2012	2.362	1.983	4.348	6.579	6.273	4.569	3.837	3.158	3.618	4.027	4.807	4.757	45.561	50.318
2013	2.161	2.432	4.005	4.585	5.616	3.136	4.574	3.408	4.935	4.762	5.781	6.891	45.395	52.286
2014	2.169	3.512	4.476	4.905	5.094	5.028	4.233	4.920	5.619	5.743	6.250	7.409	51.949	59.358
2015	3.124	3.984	5.460	6.383	6.078	5.748	4.677	5.044	4.765	7.049	6.898	7.564	59.210	66.774
2016	3.739	4.731	7.067	6.546	6.575	5.543	3.833	5.134	4.945	7.372	7.090	7.603	62.575	70.178
2017	3.974	4.964	6.773	6.780	7.057	5.356	5.003	4.396	6.064	7.734	7.457		65.558	65.558

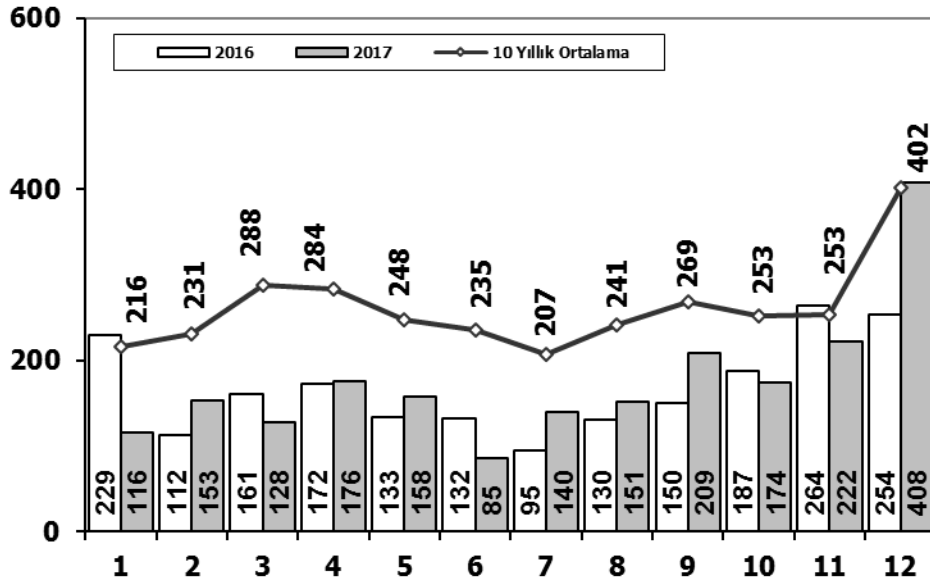
Kaynak: TÜİK trafik kayıtları.

Rakamlar, son iki model yılına ait traktör tescillerinden oluşmaktadır.

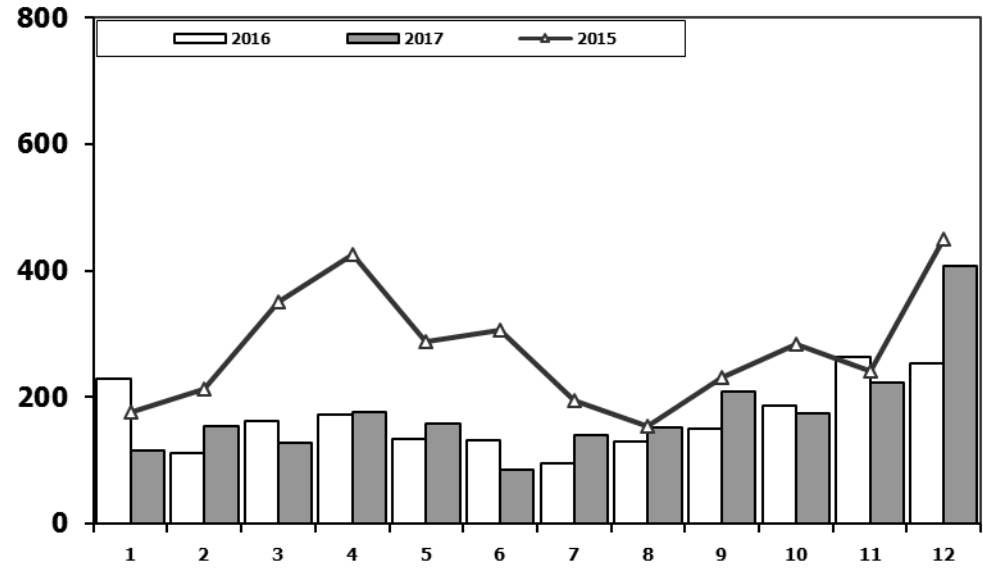
Source: Turkish Statistical Institute – Traffic registrations

Data represents the last two model year's farm tractors registration figures

Midibüs Pazarının Analizi (7-9 mt / 25-35 Kişilik) Midibus Market Analysis (7-9 mt / 25-35 Passengers)



Midibüs Pazarı (7-9 mt / 25-35 Kişilik Midibüs) Midibus Market (7-9 mt / 25-35 Passengers)

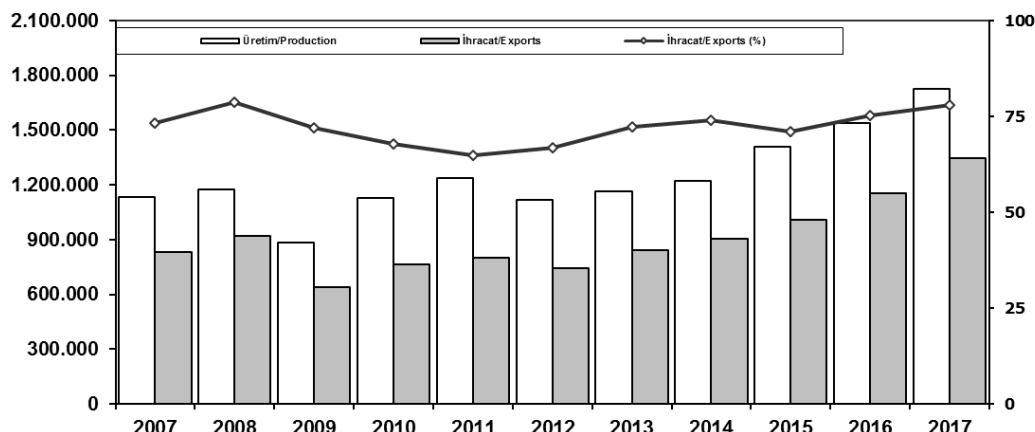


Aylar / Months	10 Yıl Ort. / 10 Yrs Avr.	2017	%
1	216	116	-46
2	231	153	-34
3	288	128	-56
4	284	176	-38
5	248	158	-36
6	235	85	-64
7	207	140	-32
8	241	151	-37
9	269	209	-22
10	253	174	-31
11	253	222	-12
12	402	408	2
Total	3.126	2.120	-32

	1	2	3	4	5	6	7	8	9	10	11	12	Total
2007	207	272	404	238	302	283	164	365	399	279	283	465	3.661
2008	391	476	436	512	419	331	368	380	341	352	246	270	4.522
2009	154	124	160	220	174	198	160	175	168	143	206	323	2.205
2010	155	131	185	167	140	138	129	246	236	206	202	437	2.372
2011	138	195	294	316	280	258	211	305	301	276	260	270	3.104
2012	179	257	277	229	257	239	216	249	325	269	189	398	3.084
2013	191	268	289	276	283	241	367	235	305	392	415	697	3.959
2014	335	265	326	280	206	223	161	174	229	140	226	454	3.019
2015	177	213	350	425	288	306	195	154	231	283	240	450	3.312
2016	229	112	161	172	133	132	95	130	150	187	264	254	2.019
2017	116	153	128	176	158	85	140	151	209	174	222	408	2.120

İhracat/Üretim (2007-2017) (Traktör dahil)

Exports/Production (2007-2017) (Including F.Tractor)



Taşıt Araçları İhracatı (2015-2017)

Motor Vehicle Exports (2015-2017)

SEKTÖR/SECTOR	2015	2016	2017	2017/2016 (%)
OTOMOBİL/ P.Cars	604.683	745.709	921.354	24
TİCARİ ARAÇLAR / CV	387.652	395.673	411.440	4
* Kamyonet/Pick-Up	341.834	347.949	350.108	1
* Minibüs/Minibus	38.255	34.790	45.794	32
* Kamyon/Truck	1.408	5.521	7.800	41
* Midibüs/Midibus	447	915	710	-22
* Otobüs/Bus	5.708	6.498	7.028	8
TAŞIT ARAÇLARI /MV TOTAL	992.335	1.141.382	1.332.794	17
TRAKTÖR/F.TRACTOR	14.932	13.651	13.123	-4
TOTAL	1.007.267	1.155.033	1.345.917	17

Otomotiv Ana ve Yan Sanayii İhracatı (ABD \$)

CBU and CKD Exports - \$

Sektör / Sector	2013	2014	2015	2016	2017	2017/2016 (%)
Yan Sanayi İhracatı/Total Component Exports	9.065.017.539	9.504.013.791	8.641.977.425	8.946.472.202	9.838.541.337	10%
İç ve Dış Lastik / Tyres	1.130.005.891,78	1.126.709.610,14	960.550.807	978.124.241	1.131.881.119	16%
Emniyet Camı / Safety Glasses	135.230.309,67	143.208.298,99	124.564.841	119.553.098	136.486.808	14%
Motor (Engine)	319.294.885,46	171.893.752,32	221.897.271	370.418.066	486.426.738	31%
Akümülatör / Batteries	306.451.449,47	289.101.198,21	220.462.827	224.588.995	296.139.813	32%
Diğer Aksam ve Parça / Spare Parts&Components	7.174.035.002,35	7.773.100.931,83	7.114.501.679	7.253.787.802	7.787.606.860	7%
Ana Sanayi İhracatı/Total Vehicle Exports	12.491.591.365	13.259.499.977	12.977.346.859	15.302.656.887	19.147.991.646	25%
Otobüs / Bus	937.790.962,87	985.983.007,01	1.023.556.746	1.190.475.986	1.311.098.736	10%
Midibüs-Minibüs / Minibus- Minibus	147.769.644,17	97.685.509,12	130.195.838	238.911.957	217.704.499	-9%
Otomobil (P. Cars)	6.855.475.589,83	7.258.361.005,24	6.881.867.274	8.336.928.418	11.790.776.093	41%
Kamyon-Kamyonet/HCV-LCV	3.918.798.755,31	4.201.760.813,55	4.264.018.829	4.617.147.751	4.849.465.868	5%
Römork ve Yarı Römork/Trailer-Semi Trailer	218.385.731,69	252.354.014,20	252.397.167	265.338.366	230.168.223	-13%
Çekici/Truck-Tractor	77.907.406,95	38.396.524,81	48.108.959	316.355.575	427.967.083	35%
Tarım Traktörü/Farm Tractor	335.463.274,61	424.959.103,39	377.202.046	337.498.834	320.811.145	-5%
Toplam/Total	21.556.608.904	22.763.513.769	21.619.324.284	24.249.129.088	28.986.532.983	20%

Kaynak: Uludağ İhracatçı Birlikleri . ÜİB tarafından OSD için özel olarak analiz edilen Otomotiv İhracatı kapsamında; ÜİB Türkiye Genel Otomotiv Endüstrisi sınıflandırmasına kıyasla "Römork ve Yarı Römork", "Tarım Traktörü" verileri dahil edilmekte; "Kullanılmış Araçlar", "İki Tekerlekli Taşıtlar", "Demiryolu Taşıtları" hariç tutulmaktadır.

Source: Uludağ Exporters Association - Special Analyze for OSD

Compared to Turkish General Automotive Industry classification, this special analyze includes; farms tractors, trailers and semi-trailers, does not include; used vehicles, two-wheeled vehicles and railway vehicles.

Sektör Bazında İhracat (1000 \$)

Exports on Sectorial Basis

SEKTÖRLER (1.000 \$)	ARALIK				OCAK - ARALIK			
	2016	2017	Değişim ('17/'16)	Pay(17)	2016	2017	Değişim ('17/'16)	Pay(17)
Otomotiv Endüstrisi	2.346.447	2.490.844	6,2	18,4	23.887.929	28.534.556	19,5	18,2
Hazırgiyim ve Konfeksiyon	1.337.050	1.440.335	7,7	10,6	16.956.074	17.045.360	0,5	10,9
Kimyevi Maddeler ve Mamulleri	1.289.587	1.367.631	6,1	10,1	13.936.780	16.042.218	15,1	10,2
Çelik	924.331	1.165.012	26,0	8,6	9.073.203	11.471.944	26,4	7,3
Elektrik Elektronik ve Hizmet	947.214	1.096.260	15,7	8,1	9.976.164	10.500.495	5,3	6,7
Tekstil ve Hammaddeleri	645.375	693.861	7,5	5,1	7.866.810	8.101.821	3,0	5,2
Demir ve Demir Dışı Metaller	490.789	625.953	27,5	4,6	5.945.789	6.812.164	14,6	4,3
Hububat, Bakliyat, Yağlı Tohumlar ve Mamulleri	614.283	562.648	-8,4	4,1	6.358.838	6.372.512	0,2	4,1
Makine ve Aksamları	491.197	605.011	23,2	4,5	5.299.789	6.085.453	14,8	3,9
Madencilik Ürünleri	354.103	411.603	16,2	3,0	3.787.244	4.688.011	23,8	3,0
TOPLAM	12.320.500	13.569.737	10,1	100,0	142.069.560	156.782.257	10,4	100,0

Kaynak: TİM

Aralık ayı ihracat verilerine, "İhracatçı Birlikleri Kaydından Muaf İhracat" verisi dahil değildir.

Source: TİM

Exportation data for December does not include "Exempted Exports from the Exporters' Union Registration".

First 3 Sectors:

- 1- Automotive Industry
- 2- Ready Wear and Confection
- 3- Chemical Articles and Products

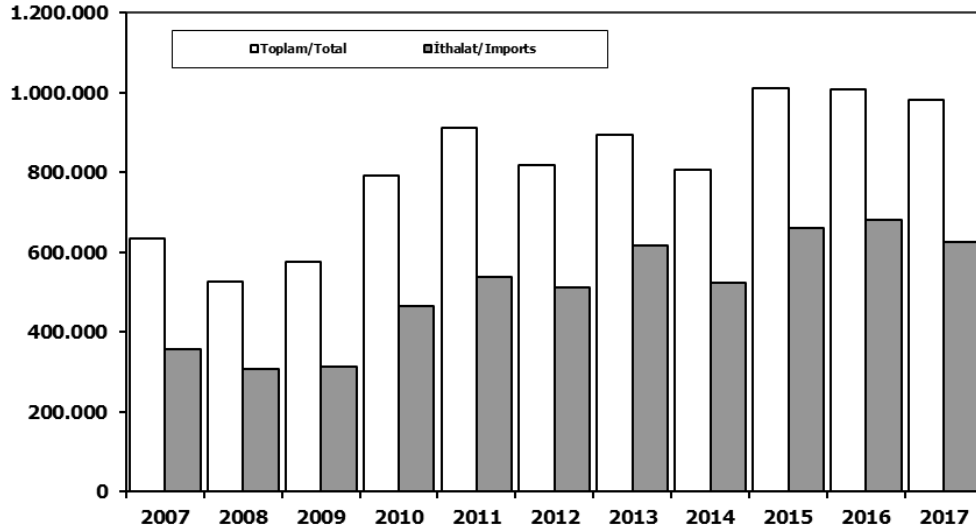
Firma Bazında İhracat (Adet)

Export Of Member Companies (Unit)

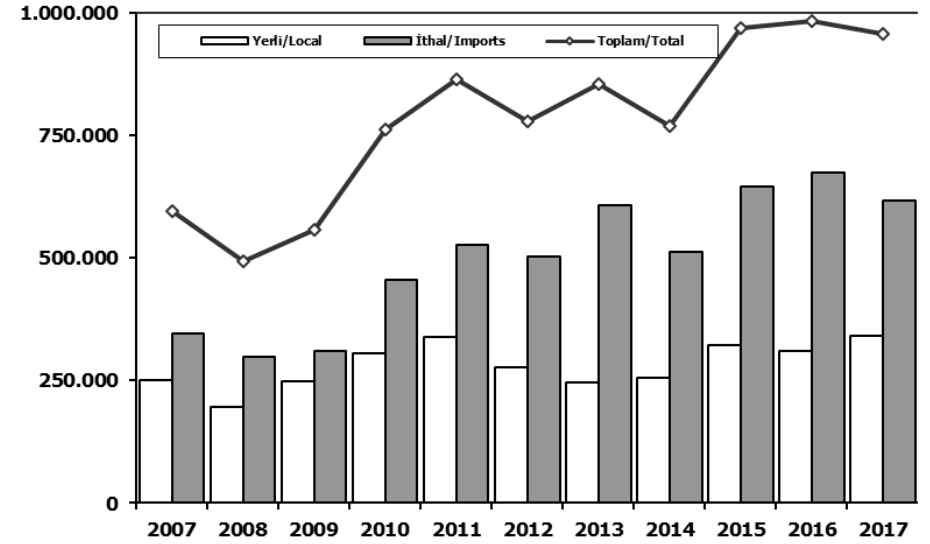
FİRMALAR Companies	2015	2016	2017
FORD OTOSAN	252.571	256.706	296.840
OYAK RENAULT	270.299	270.088	287.915
TOFAŞ	173.743	279.444	270.698
TOYOTA	81.962	109.184	246.466
HYUNDAI ASSAN	201.276	207.234	204.382
TÜRK TRAKTÖR	14.122	12.625	12.023
M. BENZ TÜRK	4.252	8.307	9.865
HONDA TÜRKİYE	2.220	2.914	9.391
KARSAN	3.067	3.629	2.969
MAN TÜRKİYE	1.493	1.717	2.007
HATTAT TRAKTÖR	810	1.026	1.100
TEMSA	441	653	870
A.I.O.S.	291	673	700
OTOKAR	720	833	691
GENEL TOPLAM	1.007.267	1.155.033	1.345.917

Kaynak: OSD

Toplam Pazar (Otomobil+T.Araç) Total Market (P.Cars+C.V)



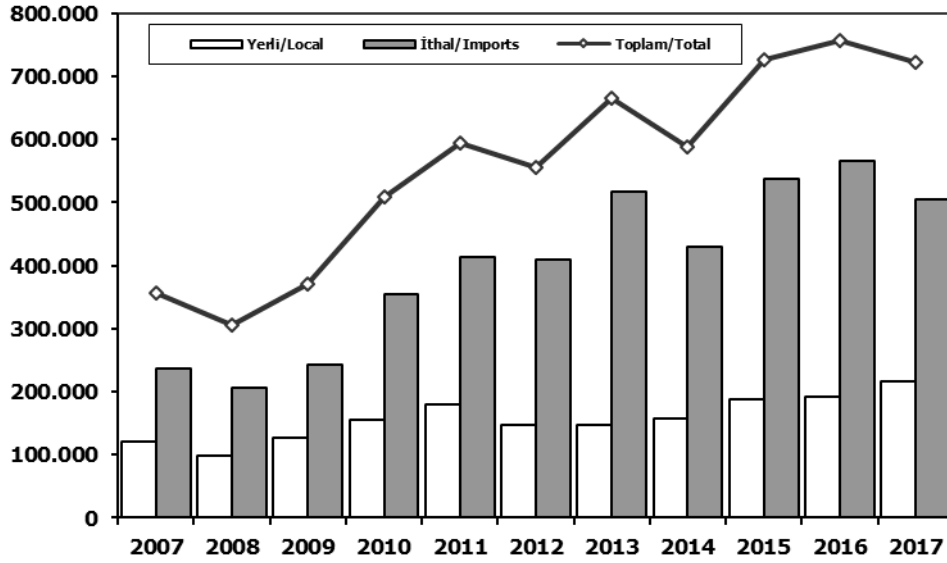
Hafif Araçlar Pazarı (2007-2017 Ocak-Aralık) LV Market (2007-2017 January-December)



	2007	2008	2009	2010	2011	2012	2013	2014	2015	2016	2017		2007	2008	2009	2010	2011	2012	2013	2014	2015	2016	2017
Toplam/Total	634.206	526.544	575.869	793.172	910.867	817.620	893.124	807.486	1.011.194	1.007.857	980.277	Yerli/Local	249.705	196.162	247.694	305.354	338.074	276.003	245.906	255.573	323.080	310.864	340.306
İthalat/Imports	355.752	306.087	313.921	465.408	538.532	511.694	615.609	522.842	660.045	681.308	624.409	İthal/Imports	345.057	297.861	309.432	455.559	526.365	501.758	607.472	512.108	644.937	672.856	615.888
İthalat/Imports (%)	56	58	55	59	59	63	69	65	65	68	64	Toplam/Total	594.762	494.023	557.126	760.913	864.439	777.761	853.378	767.681	968.017	983.720	956.194
												İthalat/Imports (%)	58	60	56	60	61	65	71	67	67	68	64

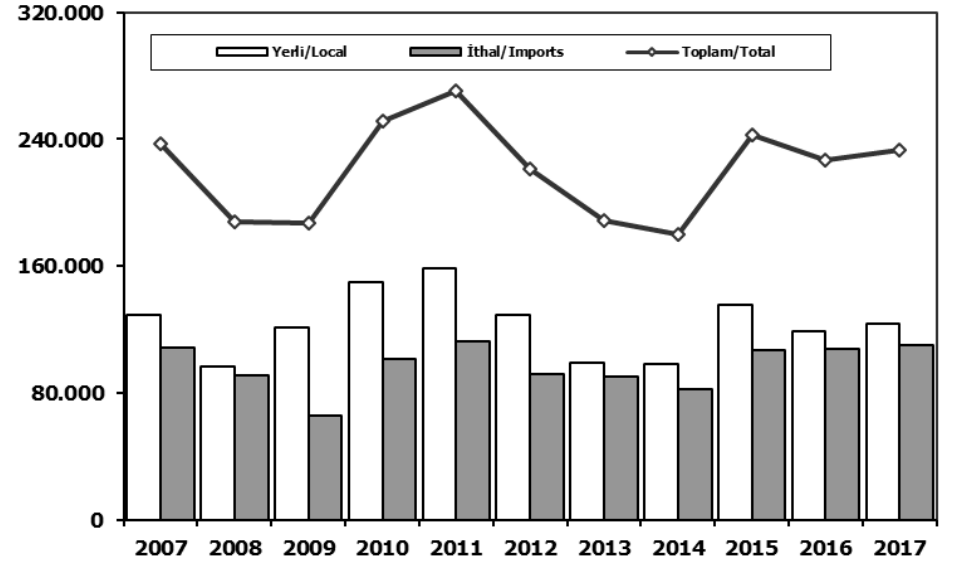
Otomobil Pazarı (2007-2017 Ocak-Aralık)

P.Cars Market (2007-2017 January-December)



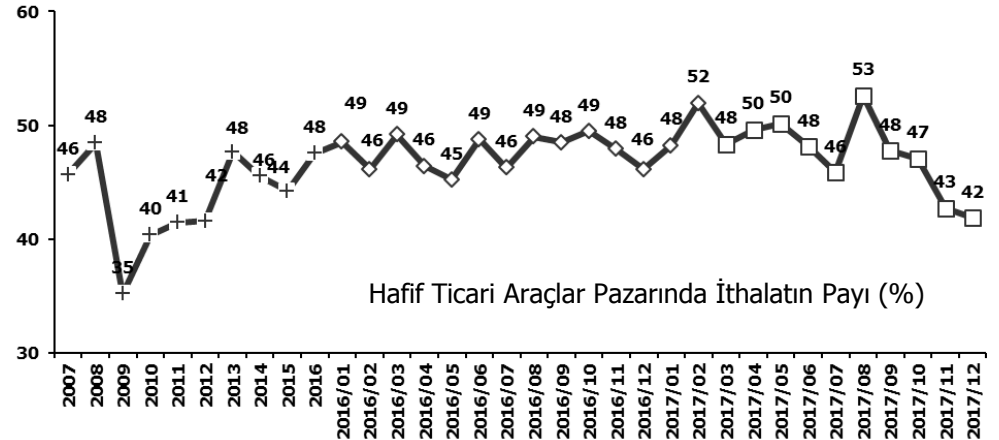
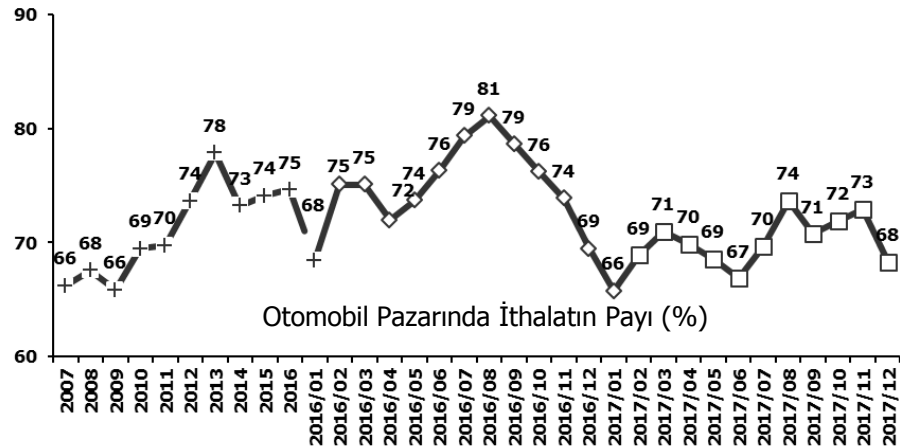
Hafif Ticari Araçlar Pazarı (2007-2017 Ocak-Aralık)

Light Commercial Vehicle Market (2007-2017 January-December)



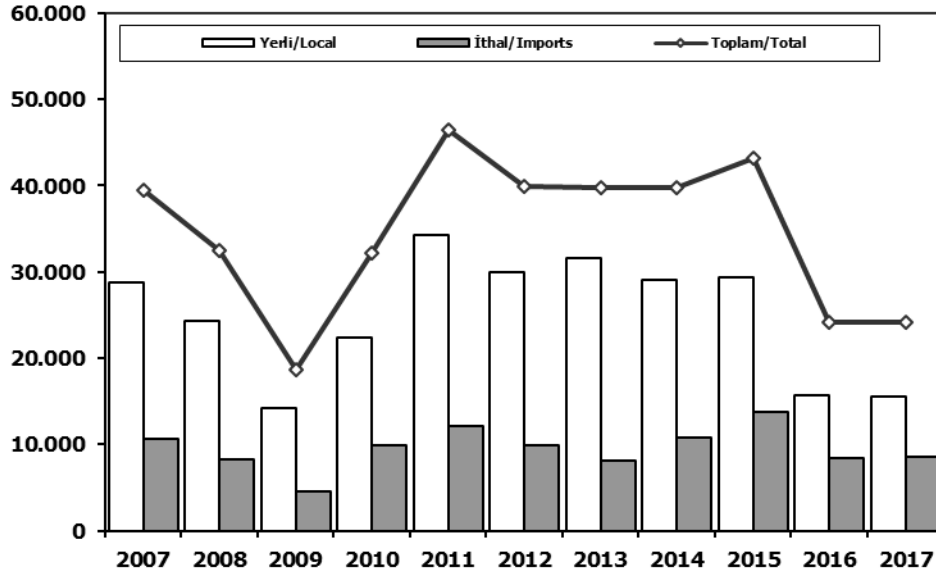
	2007	2008	2009	2010	2011	2012	2013	2014	2015	2016	2017
Yerli/Local	120.740	99.205	126.277	155.634	179.488	146.604	147.128	157.349	187.881	191.893	216.791
İthal/Imports	236.725	206.793	243.542	354.150	414.031	409.676	517.527	429.982	537.715	565.045	505.968
Toplam/Total	357.465	305.998	369.819	509.784	593.519	556.280	664.655	587.331	725.596	756.938	722.759
İthalat/Imports (%)	66	68	66	69	70	74	78	73	74	75	70

	2007	2008	2009	2010	2011	2012	2013	2014	2015	2016	2017
Yerli/Local	128.965	96.957	121.417	149.720	158.586	129.399	98.778	98.224	135.199	118.971	123.515
İthal/Imports	108.332	91.068	65.890	101.409	112.334	92.082	89.945	82.126	107.222	107.811	109.920
Toplam/Total	237.297	188.025	187.307	251.129	270.920	221.481	188.723	180.350	242.421	226.782	233.435
İthalat/Imports (%)	46	48	35	40	41	42	48	46	44	48	47



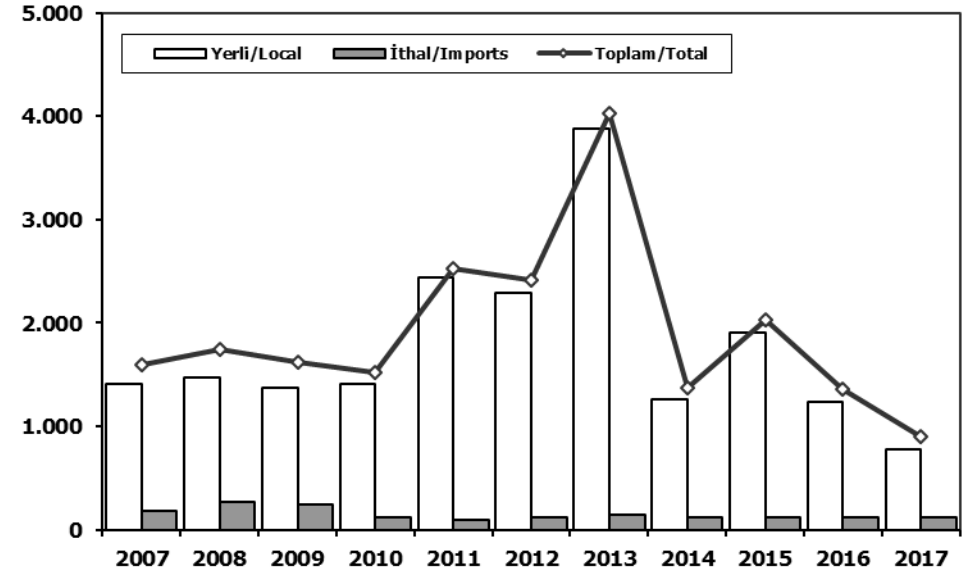
Ağır Ticari Araçlar Pazarı (2007-2017 Ocak-Aralık)

HCV Market (2007-2017 January-December)



Otobüs Pazarı (2007-2017 Ocak-Aralık)

Bus Market (2007-2017 January-December)

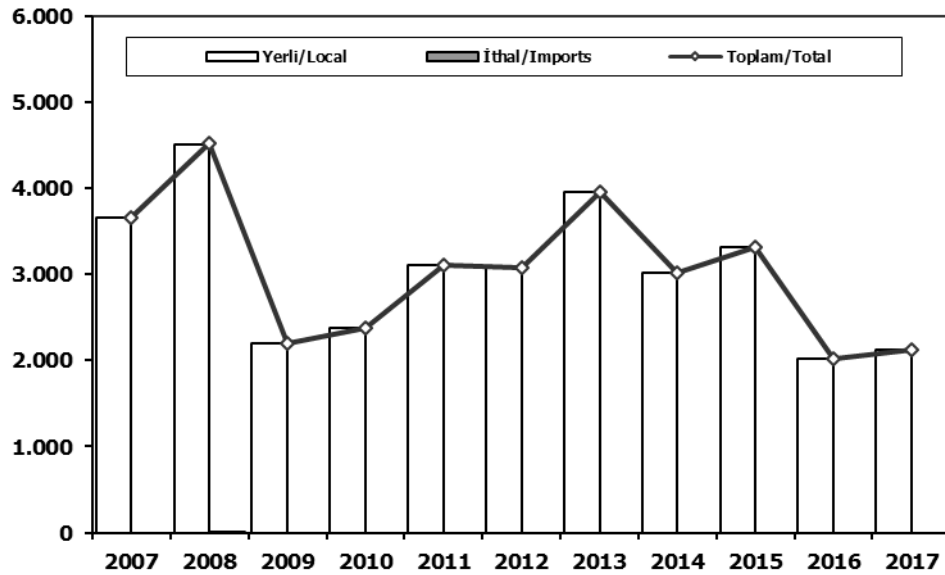


	2007	2008	2009	2010	2011	2012	2013	2014	2015	2016	2017
Yerli/Local	28.749	24.295	14.254	22.410	34.261	29.923	31.609	29.071	29.424	15.685	15.562
İthal/Imports	10.695	8.226	4.489	9.849	12.167	9.936	8.137	10.734	13.753	8.452	8.521
Toplam/Total	39.444	32.521	18.743	32.259	46.428	39.859	39.746	39.805	43.177	24.137	24.083
İthalat/Imports (%)	27	25	24	31	26	25	20	27	32	35	35

	2007	2008	2009	2010	2011	2012	2013	2014	2015	2016	2017
Yerli/Local	1.413	1.468	1.376	1.409	2.437	2.291	3.882	1.258	1.912	1.241	776
İthal/Imports	185	271	247	116	95	119	145	120	120	120	120
Toplam/Total	1.598	1.739	1.623	1.525	2.532	2.410	4.027	1.378	2.032	1.361	896
İthalat/Imports (%)	12	16	15	8	4	5	4	9	6	9	13

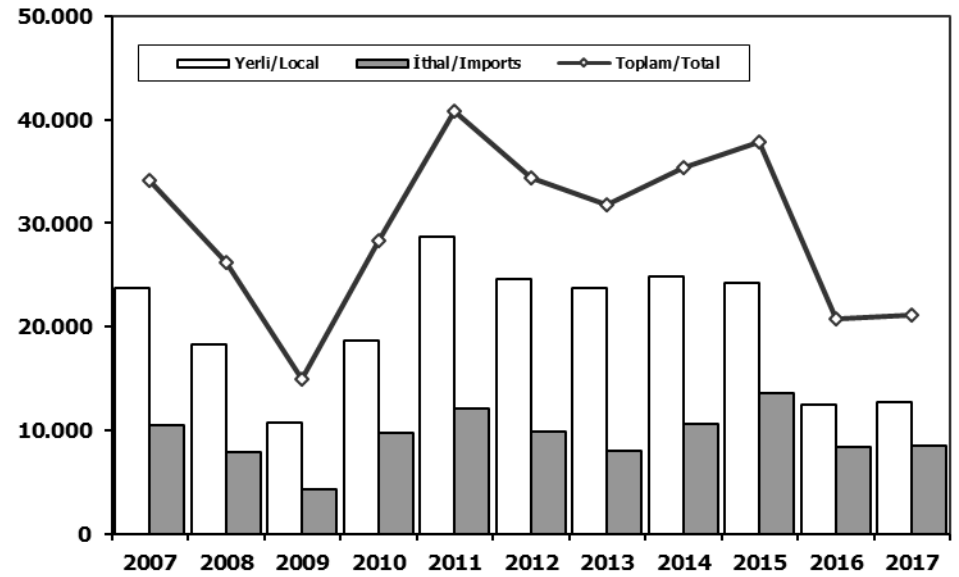
Midibüs Pazarı (2007-2017 Ocak-Aralık) (7-9 mt / 25-35 Kişilik)

Midibus Market (2007-2017 January-December) (7-9 mt / 25-35 Passengers)



Kamyon Pazarı (2007-2017 Ocak-Aralık)

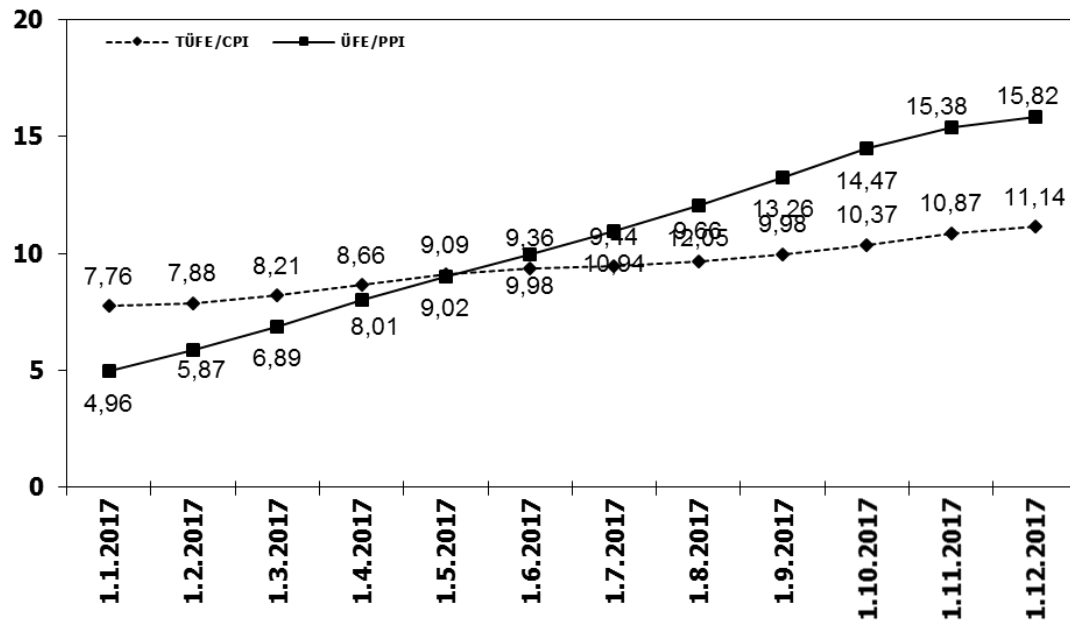
Truck Market (2007-2017 January-December)



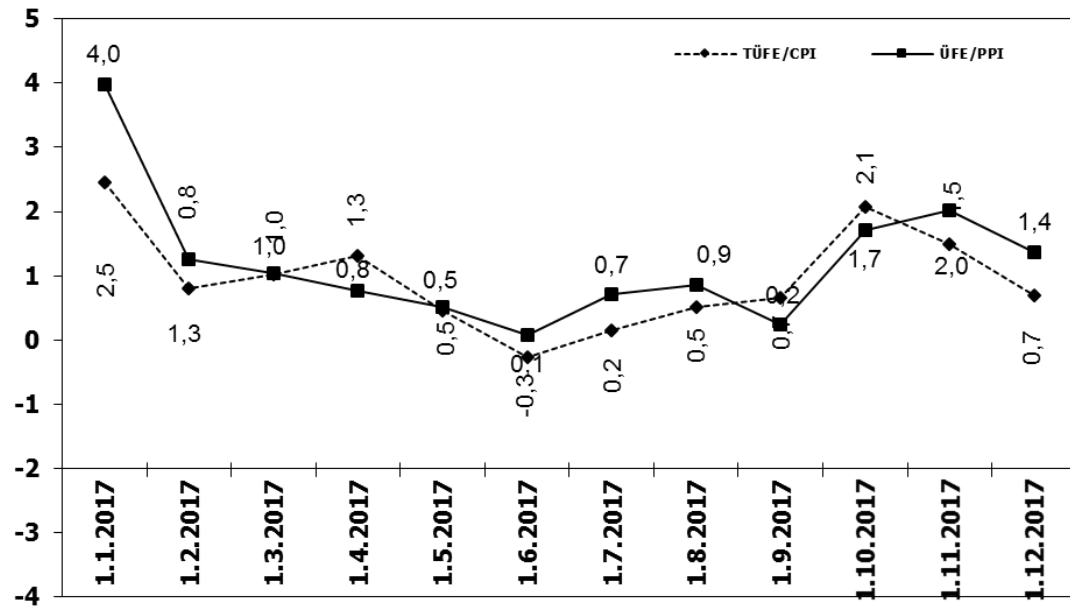
	2007	2008	2009	2010	2011	2012	2013	2014	2015	2016	2017
Yerli/Local	3.661	4.511	2.205	2.372	3.104	3.084	3.959	3.019	3.312	2.019	2.120
İthal/Imports	0	11	0	0	0	0	0	0	0	0	0
Toplam/Total	3.661	4.522	2.205	2.372	3.104	3.084	3.959	3.019	3.312	2.019	2.120
İthalat/Imports (%)	0	0	0	0	0	0	0	0	0	0	0

	2007	2008	2009	2010	2011	2012	2013	2014	2015	2016	2017
Yerli/Local	23.675	18.316	10.673	18.629	28.720	24.548	23.768	24.794	24.200	12.425	12.666
İthal/Imports	10.510	7.944	4.242	9.733	12.072	9.817	7.992	10.614	13.633	8.332	8.401
Toplam/Total	34.185	26.260	14.915	28.362	40.792	34.365	31.760	35.408	37.833	20.757	21.067
İthalat/Imports (%)	31	30	28	34	30	29	25	30	36	40	40

TÜFE ve ÜFE'nin 12 Aylık Ort. Değişimi (%) CPI and PPI 12 Months Avr. Changes (%)



TÜFE ve ÜFE'nin Aylık Değişimi (%) CPI and PPI Monthly Changes (%)



OTOMOTİV SANAYİ DİŐ SATIŐALI - 2017
AUTOMOTIVE INDUSTRY EXPORTS SALES - 2017

TİPLER-Types	Ocak January	Őubat February	Mart March	Nisan April	Mayıs May	Haziran June	Temmuz July	Ağustos August	Eylöl September	Ekim October	Kasım November	Aralık December	TOPLAM Total
Otomobil	76.492	81.990	96.314	82.586	87.536	79.544	75.618	44.945	64.166	79.904	83.223	69.036	921.354
OTOMOBİL-Pass. Car	76.492	81.990	96.314	82.586	87.536	79.544	75.618	44.945	64.166	79.904	83.223	69.036	921.354
TİCARİ ARAÇ	26.878	34.073	39.652	34.641	38.152	36.425	38.452	16.428	30.582	38.966	37.677	39.514	411.440
* KAMYONET-Pick Up	23.417	29.632	33.496	29.383	32.321	30.570	32.295	13.362	25.985	33.076	32.618	33.953	350.108
* KAMYON-Truck	25	538	885	664	813	814	785	372	634	623	784	863	7.800
* MIDİBÜS-Midibus	18	59	46	33	52	99	30	59	51	60	47	156	710
* MINİBÜS-Minibus	3.045	3.220	4.570	3.933	4.294	4.358	4.712	2.102	3.348	4.663	3.626	3.923	45.794
* OTOBÜS-Bus	373	624	655	628	672	584	630	533	564	544	602	619	7.028
Traktör	989	885	1.409	1.111	1.056	1.174	1.198	1.268	1.076	1.148	957	852	13.123
TRAKTÖR-F.Tractor	989	885	1.409	1.111	1.056	1.174	1.198	1.268	1.076	1.148	957	852	13.123
TOPLAM-Total	104.359	116.948	137.375	118.338	126.744	117.143	115.268	62.641	95.824	120.018	121.857	109.402	1.345.917

Otomobil

FİRMALAR-Companies	Ocak January	Őubat February	Mart March	Nisan April	Mayıs May	Haziran June	Temmuz July	Ağustos August	Eylöl September	Ekim October	Kasım November	Aralık December	TOPLAM Total
FORD OTOSAN	1.855	1.431	1.849	1.329	1.513	1.925	1.287	2	2.002	2.576	2.419	1.560	19.748
HONDA TÜRKİYE	490	196	1.074	795	1.101	950	654	772	764	871	1.212	512	9.391
HYUNDAI ASSAN	15.119	17.105	19.168	18.719	19.640	17.231	13.500	15.200	16.600	18.100	19.100	14.900	204.382
OYAK RENAULT	22.534	25.360	31.383	27.062	26.589	24.673	25.234	12.721	17.631	24.232	27.661	22.835	287.915
TOFAŐ	14.372	18.619	18.693	14.237	15.375	12.766	13.319	4.104	10.353	12.223	11.722	7.669	153.452
TOYOTA	22.122	19.279	24.147	20.444	23.318	21.999	21.624	12.146	16.816	21.902	21.109	21.560	246.466
TOPLAM-Total	76.492	81.990	96.314	82.586	87.536	79.544	75.618	44.945	64.166	79.904	83.223	69.036	921.354

Kamyonet

FİRMALAR-Companies	Ocak January	Őubat February	Mart March	Nisan April	Mayıs May	Haziran June	Temmuz July	Ağustos August	Eylöl September	Ekim October	Kasım November	Aralık December	TOPLAM Total
FORD OTOSAN	18.002	18.340	23.102	19.638	20.299	18.945	21.006	8.116	16.383	22.445	21.716	22.118	230.110
KARSAN	0	117	91	232	331	254	181	196	259	406	298	240	2.605
OTOKAR	0	0	46	0	6	30	0	0	16	13	20	16	147
TOFAŐ	5.415	11.175	10.257	9.513	11.685	11.341	11.108	5.050	9.327	10.212	10.584	11.579	117.246
TOPLAM-Total	23.417	29.632	33.496	29.383	32.321	30.570	32.295	13.362	25.985	33.076	32.618	33.953	350.108

Minibüs

FİRMALAR-Companies	Ocak January	Őubat February	Mart March	Nisan April	Mayıs May	Haziran June	Temmuz July	Ağustos August	Eylöl September	Ekim October	Kasım November	Aralık December	TOPLAM Total
FORD OTOSAN	3.044	3.220	4.547	3.929	4.292	4.345	4.708	2.098	3.335	4.629	3.620	3.896	45.663
KARSAN	1	0	23	4	2	13	4	4	13	34	6	27	131
TOPLAM-Total	3.045	3.220	4.570	3.933	4.294	4.358	4.712	2.102	3.348	4.663	3.626	3.923	45.794

Kamyon

FİRMALAR-Companies	Ocak January	Őubat February	Mart March	Nisan April	Mayıs May	Haziran June	Temmuz July	Ağustos August	Eylöl September	Ekim October	Kasım November	Aralık December	TOPLAM Total
A.I.O.S.	0	6	0	0	0	0	0	0	0	0	0	6	12
FORD OTOSAN	25	65	71	87	74	63	94	90	78	131	143	398	1.319
M. BENZ TÜRK	0	467	814	577	739	751	691	282	556	492	641	459	6.469
TOPLAM-Total	25	538	885	664	813	814	785	372	634	623	784	863	7.800

Midibüs

FİRMALAR-Companies	Ocak January	Őubat February	Mart March	Nisan April	Mayıs May	Haziran June	Temmuz July	Ağustos August	Eylöl September	Ekim October	Kasım November	Aralık December	TOPLAM Total
A.I.O.S.	4	39	19	9	44	43	3	22	13	27	17	110	350
KARSAN	1	0	0	0	0	8	10	11	10	0	1	32	73
OTOKAR	13	18	16	16	4	17	13	23	20	20	18	13	191
TEMSA GLOBAL	0	2	11	8	4	31	4	3	8	13	11	1	96
TOPLAM-Total	18	59	46	33	52	99	30	59	51	60	47	156	710

Otobüs

FİRMALAR-Companies	Ocak January	Őubat February	Mart March	Nisan April	Mayıs May	Haziran June	Temmuz July	Ağustos August	Eylöl September	Ekim October	Kasım November	Aralık December	TOPLAM Total
A.I.O.S.	0	13	46	8	7	8	14	26	64	50	60	42	338
KARSAN	0	0	1	0	0	20	0	25	52	7	15	40	160
M. BENZ TÜRK	191	382	359	318	373	312	331	215	139	230	255	291	3.396
MAN TÜRKİYE	129	199	191	229	176	147	149	105	165	165	173	179	2.007
OTOKAR	41	10	7	15	23	36	60	47	21	30	30	33	353
TEMSA GLOBAL	12	20	51	58	93	61	76	115	123	62	69	34	774
TOPLAM-Total	373	624	655	628	672	584	630	533	564	544	602	619	7.028

Traktör

FİRMALAR-Companies	Ocak January	Őubat February	Mart March	Nisan April	Mayıs May	Haziran June	Temmuz July	Ağustos August	Eylöl September	Ekim October	Kasım November	Aralık December	TOPLAM Total
HATTAT TARIM	84	15	173	98	128	77	92	161	70	119	48	35	1.100
TÜRK TRAKTÖR	905	870	1.236	1.013	928	1.097	1.106	1.107	1.006	1.029	909	817	12.023
TOPLAM-Total	989	885	1.409	1.111	1.056	1.174	1.198	1.268	1.076	1.148	957	852	13.123

2017 YILI İTHAL OTOMOBİL SATIŞLARI / P.Cars Import 2017

	2016 TOPLAMI 2016 Total	1	2	3	4	5	6	7	8	9	10	11	12	2017 TOPLAMI 2017 Total
VOLKSWAGEN	101.761	3.059	4.903	6.729	6.672	8.131	7.213	7.006	6.957	7.831	7.956	10.228	13.003	89.688
OPEL	55.471	1.577	1.652	4.014	3.838	3.654	4.055	4.365	3.564	2.966	4.359	6.069	4.594	44.707
DACIA	42.109	1.471	2.303	3.534	3.557	3.356	2.933	3.933	3.467	2.916	3.521	4.238	6.685	41.914
RENAULT	42.422	844	1.462	3.148	2.879	3.631	3.230	3.673	3.714	2.775	2.562	4.283	4.820	37.021
FORD	33.453	1.175	1.199	2.760	2.902	3.992	3.425	3.067	2.826	2.017	3.008	3.460	3.840	33.671
NISSAN	30.513	1.154	1.519	2.083	2.254	2.835	2.385	2.460	2.429	1.603	4.132	3.964	5.225	32.043
PEUGEOT	25.440	637	1.884	2.139	2.604	2.651	2.799	2.030	2.412	1.969	3.004	3.258	4.594	29.981
HYUNDAI	26.463	1.413	1.393	2.563	2.003	1.904	2.179	1.871	2.299	2.232	2.662	2.962	3.360	26.841
MERCEDES-BENZ	32.666	499	1.078	2.308	2.106	2.213	2.313	2.300	2.324	2.312	2.797	2.409	2.929	25.588
SKODA	28.876	925	1.225	1.335	2.144	1.655	1.931	2.133	1.937	2.344	2.850	2.574	3.626	24.679
AUDI	22.005	625	702	1.287	1.673	2.109	2.177	1.370	1.055	1.352	3.785	2.326	3.124	21.585
BMW	27.166	570	900	1.346	877	1.814	1.409	1.904	1.285	1.487	2.075	2.399	3.498	19.564
SEAT	20.637	536	623	1.103	1.583	1.651	2.436	1.789	1.030	763	1.545	1.642	1.363	16.064
CITROEN	17.041	515	761	1.765	1.654	1.504	1.473	1.339	1.321	1.433	1.544	745	655	14.709
KIA	14.398	426	481	630	1.097	1.110	1.003	1.065	920	831	1.269	969	1.136	10.937
TOYOTA	11.513	439	413	439	427	484	707	852	501	481	897	633	1.024	7.297
HONDA	8.714	206	255	642	618	660	666	583	510	616	648	701	1.145	7.250
VOLVO	4.100	155	213	232	340	400	374	275	340	352	425	650	714	4.470
SUZUKI	3.931	79	143	260	206	324	296	446	458	431	475	427	771	4.316
JEEP	2.192	111	104	162	184	179	188	198	174	238	243	246	330	2.357
FIAT	3.103	106	187	229	185	178	145	117	184	111	116	198	401	2.157
LAND ROVER	2.108	34	72	104	175	211	176	126	170	186	208	176	241	1.879
SUBARU	1.584	67	40	195	129	30	216	103	131	118	166	262	269	1.726
MINI	1.688	55	81	82	80	96	130	93	133	137	154	229	210	1.480
MAZDA	1.427	54	76	109	100	139	161	117	120	91	100	131	214	1.412
PORSCHE	827	66	61	61	35	31	62	82	37	47	55	68	65	670
SSANGYONG	507	10	20	32	27	32	66	32	24	28	20	36	35	362
MITSUBISHI	709	28	43	50	45	24	16	19	25	15	22	21	46	354
JAGUAR	481	6	10	23	36	49	23	39	34	34	32	20	33	339
ALFA ROMEO	634	17	43	59	27	24	24	18	19	15	21	26	27	320
INFINITI	120	6	12	8	2	16	10	5	13	6	12	10	22	122
DS	400	9	0	1	13	5	1	38	1	21	0	0	30	119
SMART	192	2	7	20	19	28	8	10	6	2	2	0	1	105
LEXUS	64	16	3	6	11	9	2	3	2	21	1	18	9	101
MASERATI	72	2	7	3	5	2	4	9	6	6	5	17	10	76
ASTON MARTIN	29	1	2	3	2	2	2	2	1	0	2	1	7	25
FERRARI	18	0	1	3	1	0	1	0	3	0	2	2	3	16
BENTLEY	9	1	2	0	1	1	1	0	2	3	1	0	4	16
LAMBORGHINI	7	0	0	0	1	1	1	1	0	0	0	2	1	7
CHERY	144	0	0	0	0	0	0	0	0	0	0	0	0	0
PROTON	51	0	0	0	0	0	0	0	0	0	0	0	0	0
TOPLAM	565.045	16.896	23.880	39.467	40.512	45.135	44.241	43.473	40.434	37.790	50.676	55.400	68.064	505.968

2017 YILI İTHAL HAFİF TİCARİ ARAÇ SATIŞLARI / Light Commercial Vehicles Import 2017

	2016 TOPLAMI 2016 Total	1	2	3	4	5	6	7	8	9	10	11	12	2017 TOPLAMI 2017 Total
VOLKSWAGEN	32.772	1.255	1.599	2.121	2.362	2.524	2.218	2.376	2.405	2.396	2.538	2.709	3.290	27.793
RENAULT	15.091	519	718	1.327	1.238	1.268	1.098	1.499	1.375	1.260	1.697	2.009	2.814	16.822
PEUGEOT	8.402	157	351	990	739	965	726	885	805	652	1.044	1.495	1.649	10.458
MERCEDES-BENZ	8.070	343	496	687	742	781	767	814	845	741	732	703	1.392	9.043
CITROEN	6.884	438	669	424	807	1.147	1.176	479	682	480	733	294	694	8.023
FIAT	5.885	257	448	490	602	405	380	526	677	616	526	632	1.023	6.582
DACIA	5.422	235	348	523	615	658	650	642	538	455	542	486	764	6.456
TOYOTA	5.645	356	451	489	304	243	211	375	328	352	396	461	585	4.551
FORD	4.878	250	270	371	212	270	220	228	423	401	360	507	676	4.188
KIA	3.952	193	240	384	306	386	150	358	209	262	296	301	506	3.591
MITSUBISHI	3.533	173	213	127	209	438	169	281	228	257	395	240	797	3.527
HYUNDAI	2.244	134	174	242	308	357	243	224	248	283	279	266	226	2.984
NISSAN	1.540	167	266	337	258	170	196	195	233	151	169	220	417	2.779
IVECO	2.175	146	133	250	205	210	152	171	221	229	208	269	372	2.566
ISUZU	1.055	14	12	13	11	11	8	17	16	7	83	34	76	302
SSANGYONG	254	9	4	21	12	15	51	56	49	18	5	6	9	255
TATA	9	0	0	0	0	0	0	0	0	0	0	0	0	0
TOPLAM	107.811	4.646	6.392	8.796	8.930	9.848	8.415	9.126	9.282	8.560	10.003	10.632	15.290	109.920