



OTOMOTİV SANAYİİ DERNEĞİ
AUTOMOTIVE MANUFACTURERS ASSOCIATION

AYLIK RAPOR

Automotive Industry Monthly Report

Temmuz / July 2017

- **Üretim/Production**
- **Satış/Sales**
- **İthalat/Imports**
- **İhracat/Exports**

OSD "OICA" Üyesidir



OSD is a Member of "OICA"

2017 Temmuz Ayı Özeti / 2017 July Summary

KONULAR/MATTERS		TEMMUZ / JULY			7 AY/ 7 MONTHS			SON 12 AYLIK / YoY		
		2016	2017	2017/2016 (%)	2016	2017	2017/2016 (%)	2016	2017	2017/2016 (%)
Üretim/Production	Toplam/Total	110.857	148.974	34	836.798	1.018.132	22	1.415.274	1.667.261	18
	Otomobil/P.Cars	69.030	97.985	42	510.396	699.571	37	846.981	1.140.063	35
Pazar/Market	Toplam/Total	59.505	84.189	41	510.502	494.798	-3	979.802	992.155	1
	Otomobil/P.Cars	45.566	62.384	37	384.048	368.308	-4	717.580	741.198	3
İthalat/Import	Toplam/Total	42.436	53.340	26	344.524	313.512	-9	649.303	650.298	0
	Otomobil/P.Cars	36.155	43.473	20	286.536	253.603	-11	534.045	532.112	0
İhracat/Export	Toplam/Total	79.596	114.069	43	635.351	828.356	30	1.067.554	1.334.375	25
	Otomobil/P.Cars	47.826	75.618	58	388.449	580.084	49	651.967	937.344	44
İhracat / Export (\$)	Toplam/Total **	1.763.208.473	2.481.397.743	41	13.675.935.571	17.023.470.449	24	22.905.258.965	27.615.980.430	21
	Otomobil/P.Cars	606.847.681	1.053.382.883	74	4.177.356.034	7.150.428.889	71	7.021.234.318	11.315.112.742	61

PARAMETRELER / PARAMETERS		TEMMUZ / JULY			7 AY/ 7 MONTHS			SON 12 AYLIK / YoY		
		2016	2017	2017/2016 (%)	2016	2017	2017/2016 (%)	2016	2017	2017/2016 (%)
ÜFE/PPI		0,21	0,72	**	3,41	8,60	**	4,77	10,94	**
TÜFE/CPI		1,16	0,15	**	4,84	6,05	**	7,91	9,44	**
Sanayi Endeksi/Industry Index		0,16	0,91	**	4,29	9,21	**	5,64	12,69	**
\$ (*)		2,9465	3,5241	20	2,9049	3,5920	24	2,9057	3,4060	17
EURO (*)		3,2723	4,0728	24	3,2299	3,9309	22	3,2158	3,7276	16
Japon Yeni (*)		2,8437	3,1373	10	2,6078	3,1775	22	2,5143	3,0765	22

(*) Ortalama Değerler / Average Values

(**) Toplam Sanayi / Total Industry Including Components

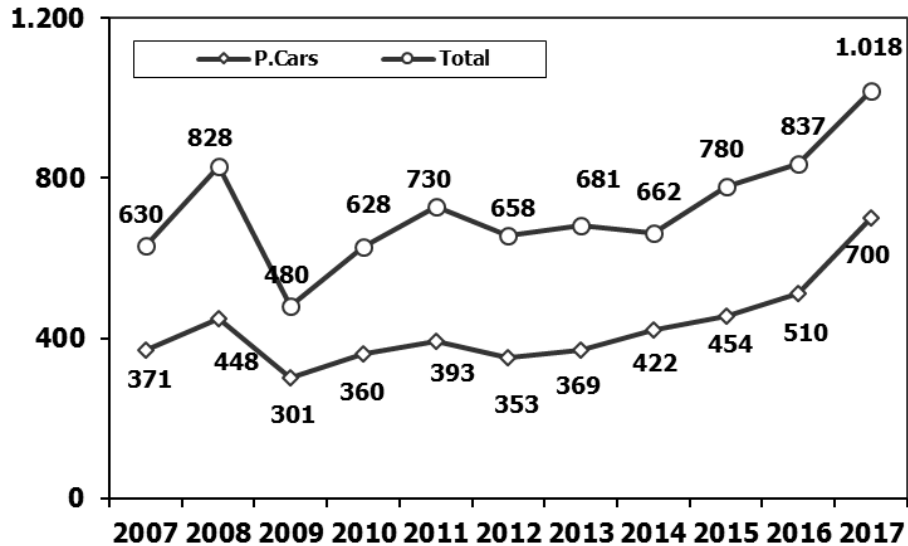
*Raporda yer alan üretim adetleri yalnızca OSD üyelerinin verilerini göstermektedir.
Production units in this report only show the data of OSD members.*

K.KAMYON : AYA 3.5-12 Ton (L.Truck:GVW 3.5-12 Ton)

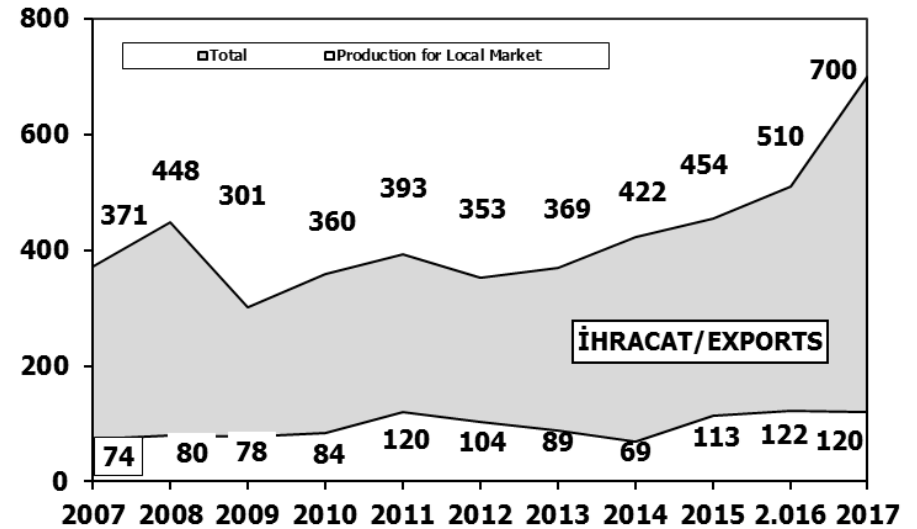
B.KAMYON : AYA 12 Ton'dan Büyük (M.Truck:GVW 12 Ton And Up)

ARAÇ TİPLERİ	TEMMUZ AYI ÜRETİMİ July Production		7 AYLIK ÜRETİM 7 Months Production		DEĞİŞİM % Percent Change %	
	2016	2017	2016	2017	TEMMUZ July	7 AY 7 Months
OTOMOBİL - Pass.Car	69.030	97.985	510.396	699.571	42	37
TİCARİ ARAÇLAR - Commercial Vehicles	41.827	50.989	326.402	318.561	22	-2
* B. KAMYON - H. Truck	1.414	1.405	9.260	9.922	-1	7
* K. KAMYON - L. Truck	118	134	1.210	1.782	14	47
* KAMYONET - Pick Up	34.555	43.087	285.342	267.239	25	-6
* OTOBÜS - Bus	540	698	4.965	5.289	29	7
* MİNİBÜS - Minibus	4.974	5.444	23.763	32.653	9	37
* MİDİBÜS - Midibus	226	221	1.862	1.676	-2	-10
TAŞIT ARAÇLARI TOPLAM - MV Total	110.857	148.974	836.798	1.018.132	34	22
TRAKTÖR - F.Tractor	4.041	4.876	34.020	29.971	21	-12
GENEL TOPLAM - Grand Total	114.898	153.850	870.818	1.048.103	34	20

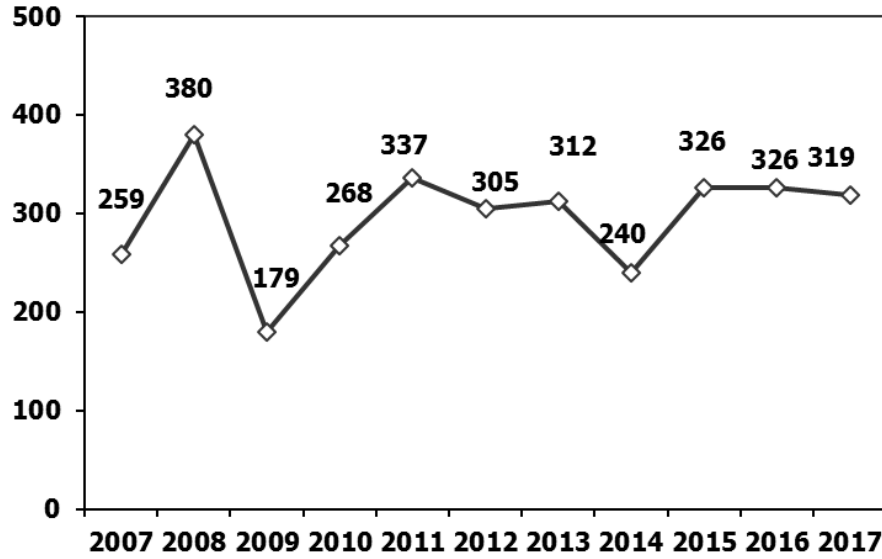
Toplam Üretim ve Otomobil Üretimi (x1000) (Ocak-Temmuz)
Total & P.Cars Production (x1000) (January-July)



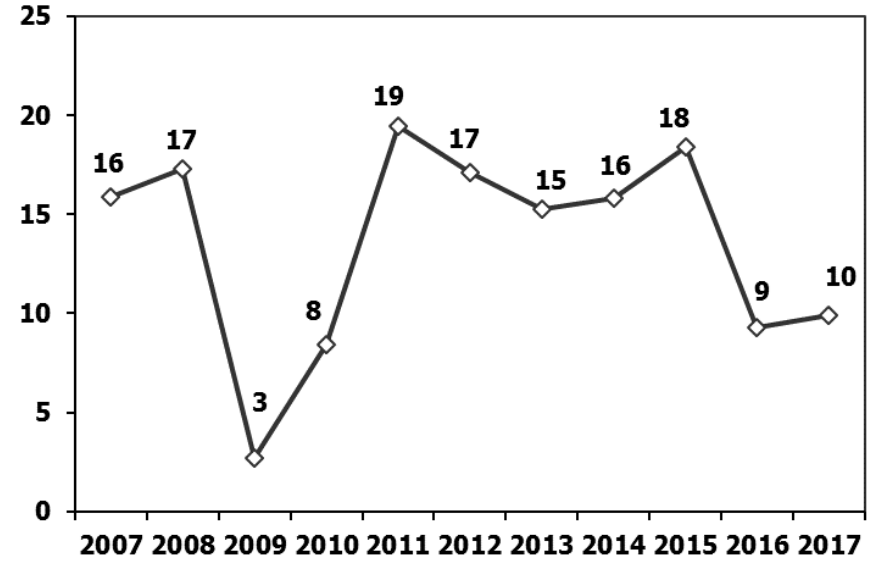
Otomobil Üretimi ve İhracat (x1000) (Ocak-Temmuz)
P.Cars Production & Exports (x1000) (January-July)



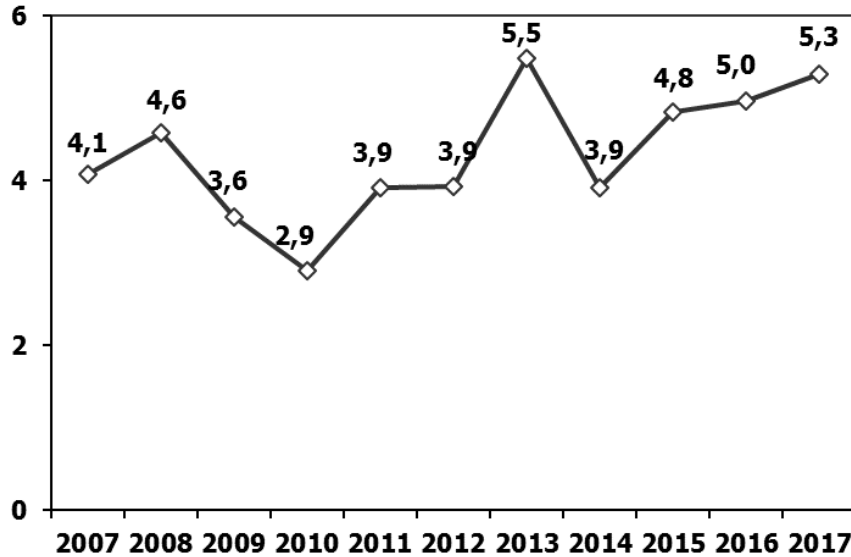
Ticari Araç Üretimi (x1000) (Ocak-Temmuz)
Commercial Vehicle Production (x1000) (January-July)



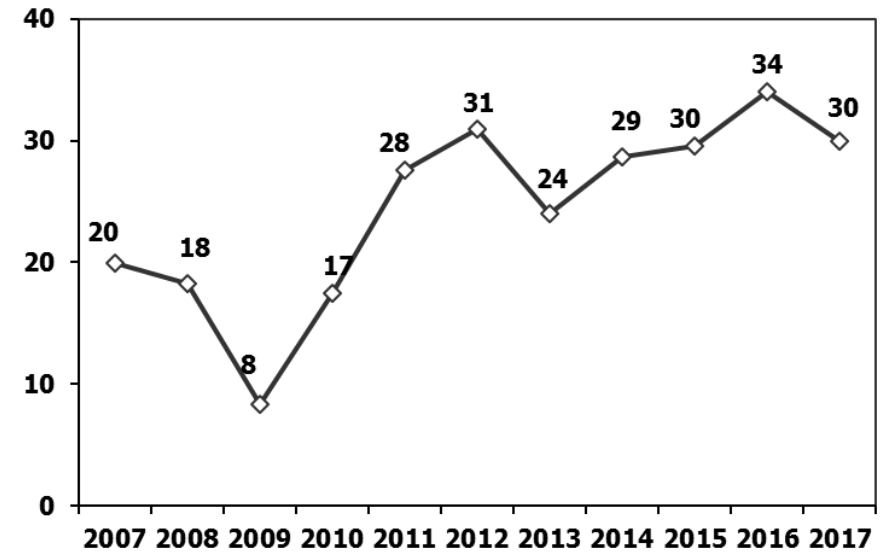
(AYA >12 Ton) **Büyük Kamyon Üretimi** (x1000) (Ocak-Temmuz)
(GVW >12 Ton) Heavy Truck Production (x1000) (January-July)



Otobüs Üretimi (x1000) (Ocak-Temmuz)
Bus Production (x1000) (January-July)

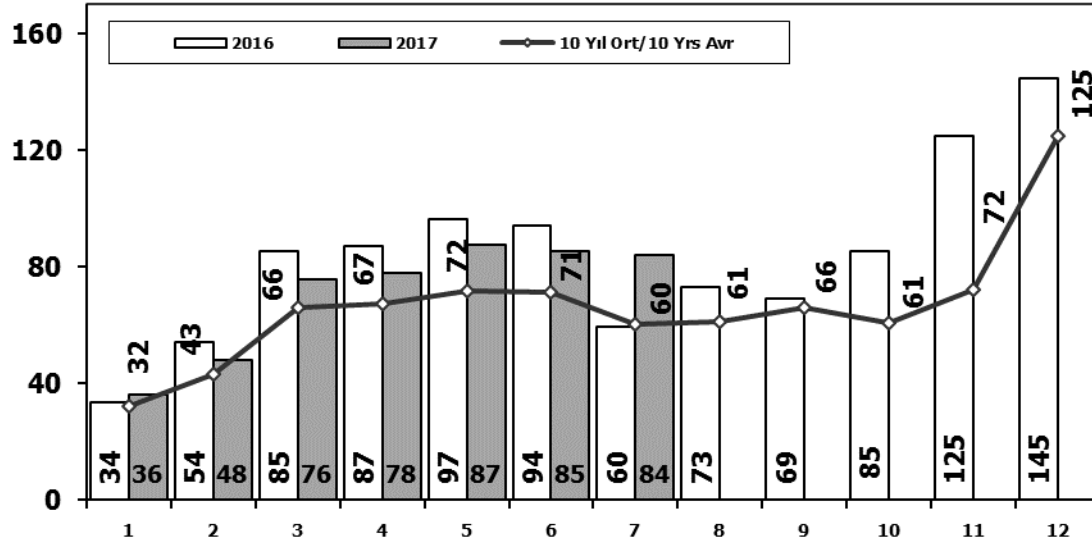


Traktör Üretimi (x1000) (Ocak-Temmuz)
F. Tractor Production (x1000) (January-July)



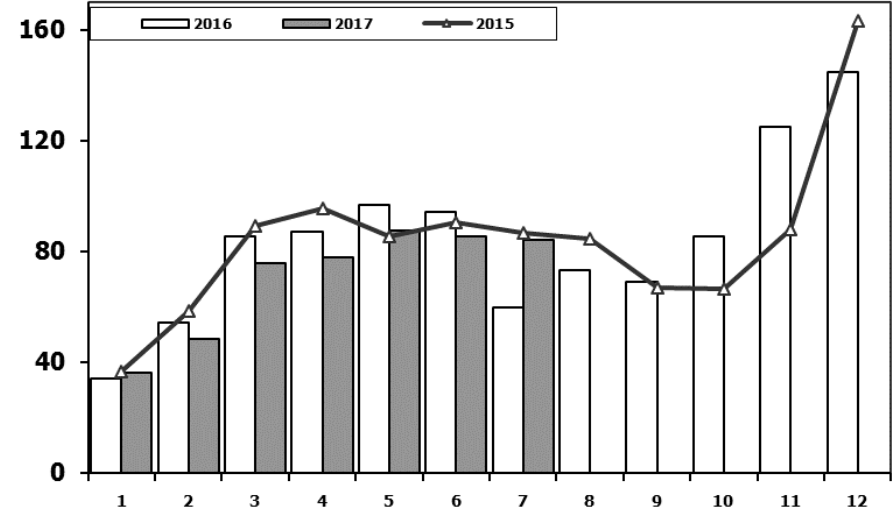
Toplam Pazarın Analizi (x1000)

Total Market Analysis (x1000)



Toplam Pazar (x1000)

Total Market (x1000)

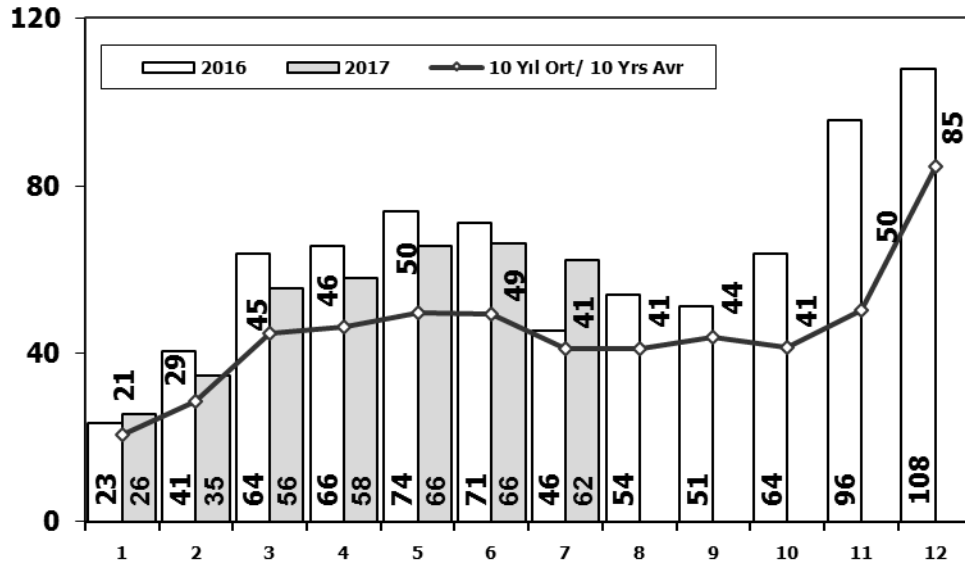


Aylar / Months	10 Yil Ort. 10 Yrs Avr. (x1000)	2017 (x1000)	%
1	32,1	36,1	12,6
2	43,2	48,1	11,4
3	66,3	75,6	14,0
4	67,2	77,8	15,8
5	71,8	87,5	21,8
6	71,5	85,4	19,5
7	60,2	84,2	39,8
Total	412,4	494,8	20,0

	1	2	3	4	5	6	7	8	9	10	11	12	7 Ay/Mo	Total
2007	24.950	31.702	45.488	45.633	51.255	51.661	50.117	54.171	50.078	56.058	67.017	106.076	300.806	634.206
2008	33.792	38.121	56.814	50.967	51.627	49.393	44.692	46.592	46.829	35.147	28.152	44.418	325.406	526.544
2009	20.631	22.846	56.531	54.426	64.887	63.102	30.246	37.092	83.403	22.117	29.202	91.386	312.669	575.869
2010	21.050	32.313	53.828	57.079	61.628	63.390	63.718	64.645	66.601	76.780	77.406	154.734	353.006	793.172
2011	47.658	62.348	83.333	82.071	85.093	85.863	65.364	61.378	63.643	72.640	67.195	134.281	511.730	910.867
2012	31.219	43.827	68.957	66.014	74.820	74.781	65.122	60.848	73.197	62.677	75.045	121.113	424.740	817.620
2013	37.140	50.931	72.688	77.015	85.421	77.771	74.726	67.383	71.037	60.399	83.017	135.596	475.692	893.124
2014	34.225	37.308	50.964	56.766	61.909	63.952	62.206	62.839	70.180	69.259	83.937	153.941	367.330	807.486
2015	36.576	58.533	89.121	95.431	85.145	90.463	86.625	84.683	66.622	66.520	88.043	163.432	541.894	1.011.194
2016	33.740	54.223	85.214	87.041	96.576	94.203	59.505	73.269	69.068	85.251	124.839	144.928	510.502	1.007.857
2017	36.146	48.141	75.581	77.849	87.476	85.416	84.189						494.798	494.798

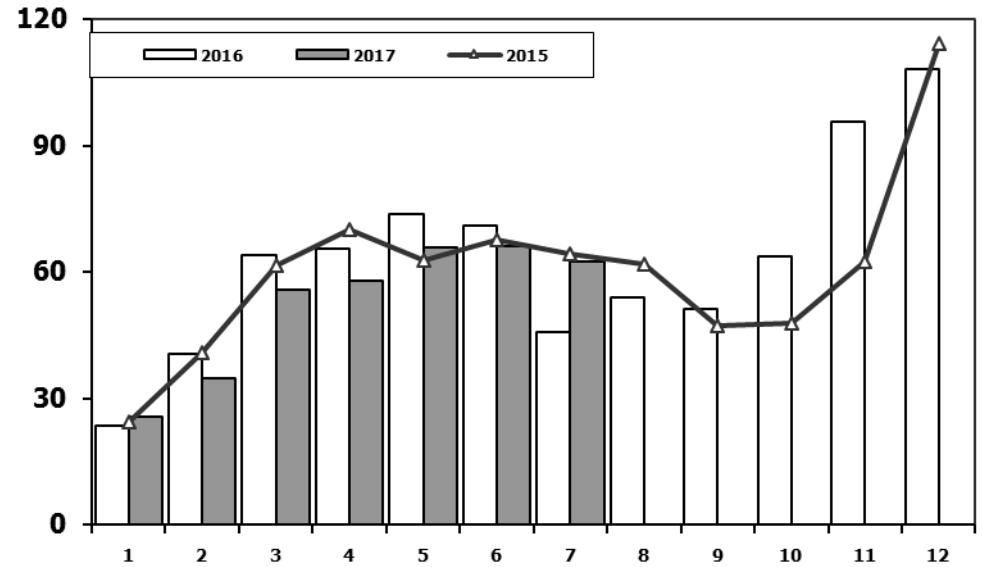
Otomobil Pazarının Analizi (x1000)

P.Cars Market Analysis (x1000)



Otomobil Pazarı (x1000)

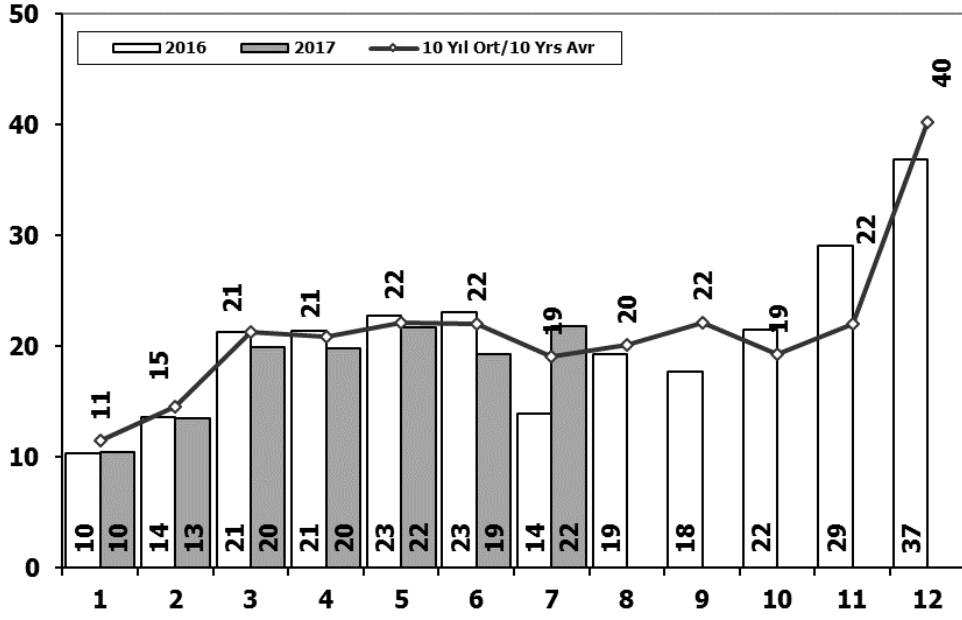
P.Cars Market (x1000)



Aylar / Months	10 Yil Ort. 10 Yrs Avr. (x1000)	2017 (x1000)	%	1	2	3	4	5	6	7	8	9	10	11	12	7 Ay/Mo	Total
1	20,7	25,7	24,4	13.186	17.212	24.336	25.204	29.067	30.126	28.246	28.469	27.662	32.569	39.643	61.745	167.377	357.465
2	28,7	34,7	20,7	18.588	21.196	34.147	30.313	31.477	28.724	25.530	26.102	27.053	19.788	17.201	25.879	189.975	305.998
3	45,0	55,6	23,7	13.173	14.492	40.622	36.202	44.188	41.019	16.637	22.537	52.162	13.828	17.781	57.178	206.333	369.819
4	46,3	58,0	25,2	12.594	20.651	33.958	36.549	40.467	42.086	41.399	42.222	42.477	47.859	50.061	99.461	227.704	509.784
5	49,7	65,8	32,3	29.868	39.004	54.023	53.835	56.302	56.714	43.518	38.875	39.964	47.508	44.951	88.957	333.264	593.519
6	49,4	66,2	33,9	21.077	29.189	47.270	45.645	50.460	50.849	44.531	41.236	49.360	43.440	52.297	80.926	289.021	556.280
7	41,2	62,4	51,4	25.835	36.814	51.785	56.999	62.383	58.290	55.712	51.611	52.925	46.985	64.117	101.199	347.818	664.655
8	49,4	66,2	33,9	24.368	27.167	37.812	42.769	46.379	47.278	46.602	45.131	49.262	50.814	59.695	110.054	272.375	587.331
9	41,2	62,4	51,4	24.498	40.817	61.676	70.211	62.878	67.766	64.218	61.753	47.088	47.954	62.397	114.340	392.064	725.596
10	281,0	368,3	31,1	23.358	40.588	63.975	65.618	73.832	71.111	45.566	53.977	51.340	63.746	95.783	108.044	384.048	756.938
11				25.689	34.658	55.616	57.998	65.799	66.164	62.384					368.308	368.308	

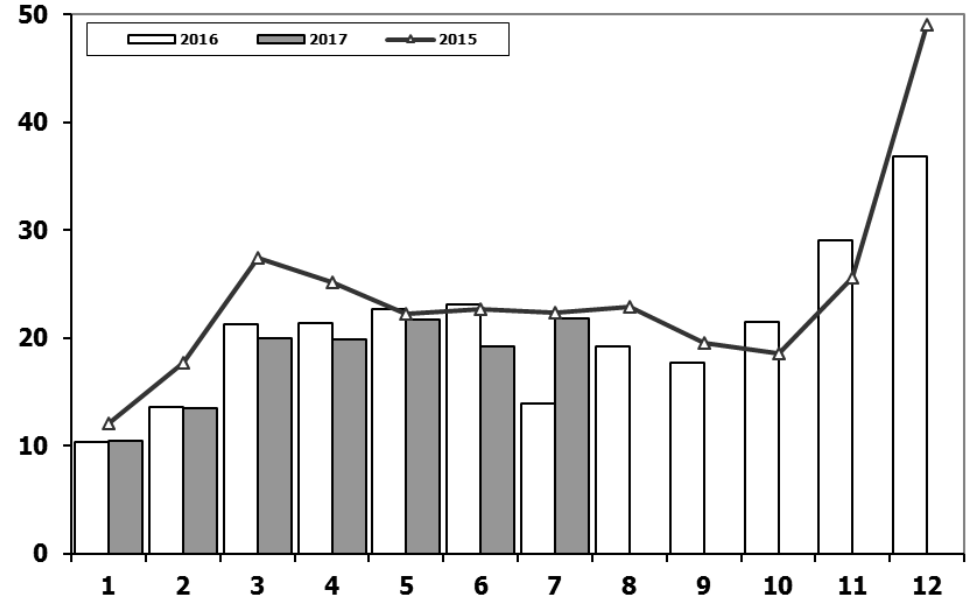
Ticari Araç Pazarının Analizi (x1000)

CV Market Analysis (x1000)



Ticari Araç Pazarı (x1000)

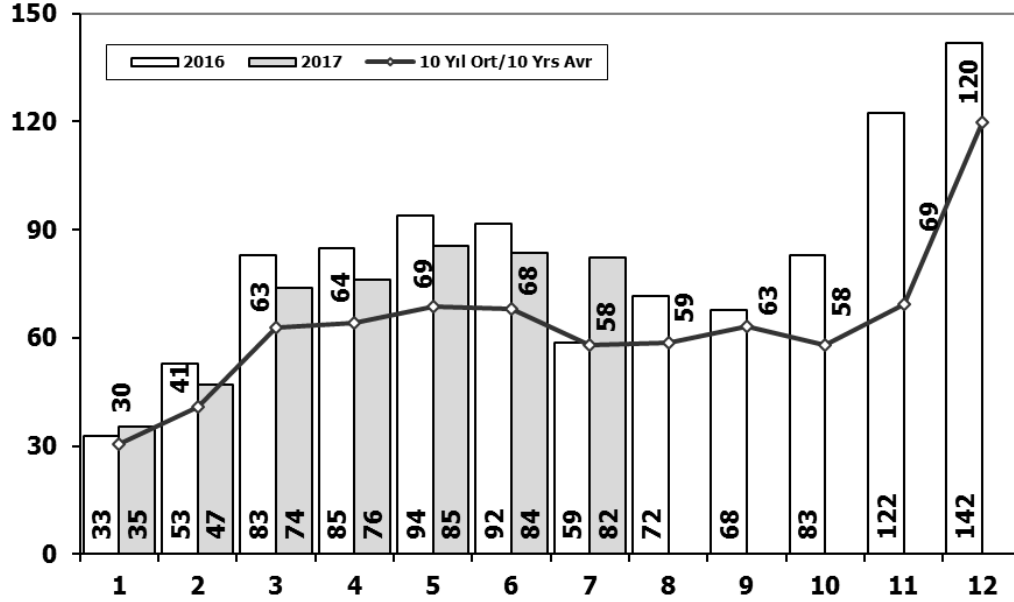
CV Total Market (x1000)



Aylar / Months	10 Yil Ort. 10 Yrs Avr. (x1000)	2017 (x1000)	%	1	2	3	4	5	6	7	8	9	10	11	12	7 Ay/Mo	Total
				11.764	14.490	21.152	20.429	22.188	21.535	21.871	25.702	22.416	23.489	27.374	44.331	133.429	276.741
				15.204	16.925	22.667	20.654	20.150	20.669	19.162	20.490	19.776	15.359	10.951	18.539	135.431	220.546
				7.458	8.354	15.909	18.224	20.699	22.083	13.609	14.555	31.241	8.289	11.421	34.208	106.336	206.050
1	11,4	10,5	-8,6	8.456	11.662	19.870	20.530	21.161	21.304	22.319	22.423	24.124	28.921	27.345	55.273	125.302	283.388
2	14,5	13,5	-7,0	17.790	23.344	29.310	28.236	28.791	29.149	21.846	22.503	23.679	25.132	22.244	45.324	178.466	317.348
3	21,3	20,0	-6,4	10.142	14.638	21.687	20.369	24.360	23.932	20.591	19.612	23.837	19.237	22.748	40.187	135.719	261.340
4	20,9	19,9	-5,1	11.305	14.117	20.903	20.016	23.038	19.481	19.014	15.772	18.112	13.414	18.900	34.397	127.874	228.469
5	22,1	21,7	-1,9	9.857	10.141	13.152	13.997	15.530	16.674	15.604	17.708	20.918	18.445	24.242	43.887	94.955	220.155
6	22,1	19,3	-12,7	12.078	17.716	27.445	25.220	22.267	22.697	22.407	22.930	19.534	18.566	25.646	49.092	149.830	285.598
7	19,0	21,8	14,5	10.382	13.635	21.239	21.423	22.744	23.092	13.939	19.292	17.728	21.505	29.056	36.884	126.454	250.919
Total	131,4	126,5	-3,7														
				10.457	13.483	19.965	19.851	21.677	19.252	21.805						126.490	126.490

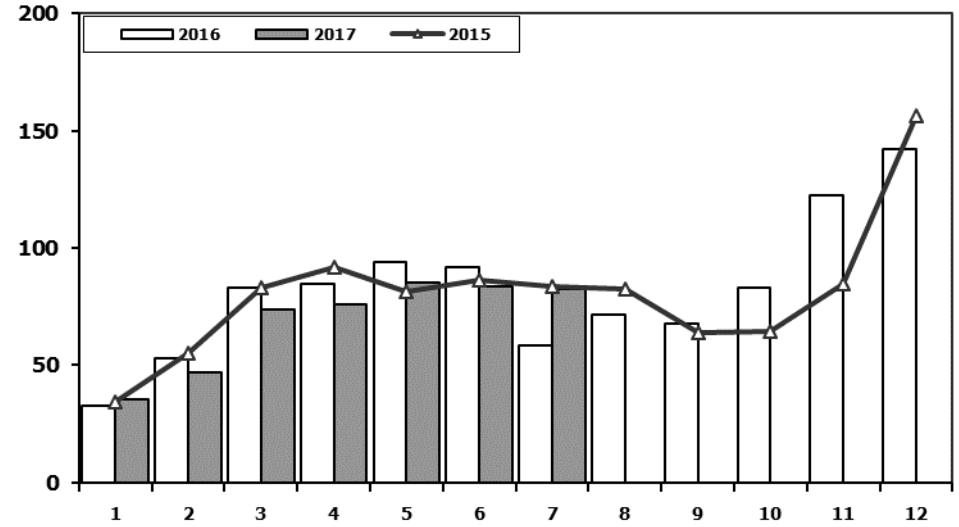
Hafif Araç Pazarının Analizi (x1000)

LV Market Analysis (x1000)



Hafif Araç Pazarı (x1000)

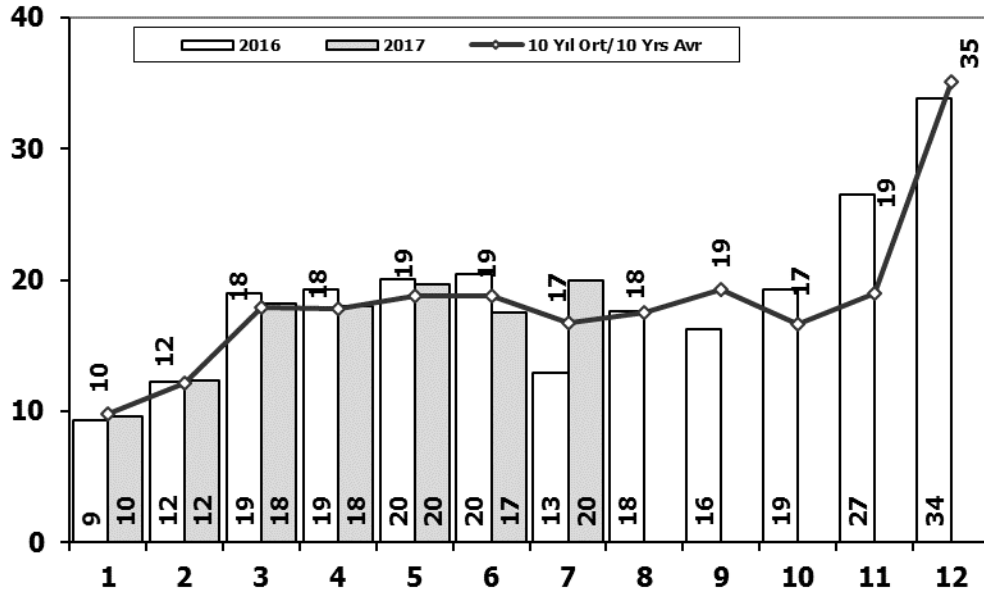
LV Total Market (x1000)



Aylar / Months	10 Yil Ort. 10 Yrs Avr. (x1000)	2017 (x1000)	%		1	2	3	4	5	6	7	8	9	10	11	12	7 Ay/Mo	Total
				2007	23.117	29.184	41.890	42.366	47.938	48.674	47.490	50.558	46.581	52.725	63.313	100.926	280.659	594.762
				2008	31.527	35.251	53.649	47.701	48.598	46.324	42.156	43.670	43.932	32.884	26.253	42.078	305.206	494.023
				2009	19.606	21.742	55.111	52.640	63.191	61.067	28.845	35.609	81.397	21.033	27.962	88.923	302.202	557.126
1	30,4	35,3	16,1	2010	20.095	31.172	51.769	54.946	59.377	60.896	61.345	61.764	63.814	73.404	73.962	148.369	339.600	760.913
2	40,9	47,0	14,9	2011	44.892	58.663	78.403	77.695	80.646	81.573	63.044	58.406	60.129	69.421	63.657	127.910	484.916	864.439
3	62,8	73,8	17,5	2012	29.545	41.324	64.884	62.949	70.863	71.067	62.304	58.148	69.629	59.938	71.710	115.400	402.936	777.761
4	64,2	76,0	18,4	2013	35.523	48.307	68.774	73.575	81.468	74.096	71.596	65.043	67.963	58.014	79.301	129.718	453.339	853.378
5	68,6	85,4	24,6	2014	32.670	35.021	47.581	53.305	58.121	60.163	59.907	60.199	66.531	66.573	80.621	146.989	346.768	767.681
6	68,2	83,7	22,7	2015	34.615	55.331	83.302	91.602	81.542	86.158	83.836	82.577	64.025	64.255	84.601	156.173	516.386	968.017
7	57,9	82,3	42,1	2016	32.713	52.825	82.948	84.887	93.904	91.540	58.533	71.556	67.593	83.000	122.309	141.912	497.350	983.720
Total	392,9	483,5	23,0	2017	35.323	46.965	73.802	75.988	85.422	83.658	82.297						483.455	483.455

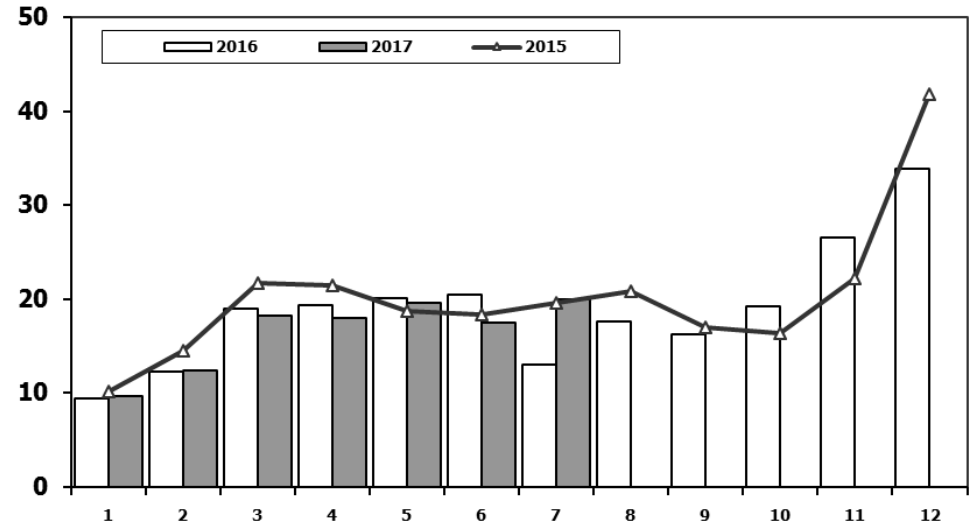
Hafif Ticari Araç Pazarının Analizi (x1000)

LCV Market Analysis (x1000)



Hafif Ticari Araç Pazarı (x1000)

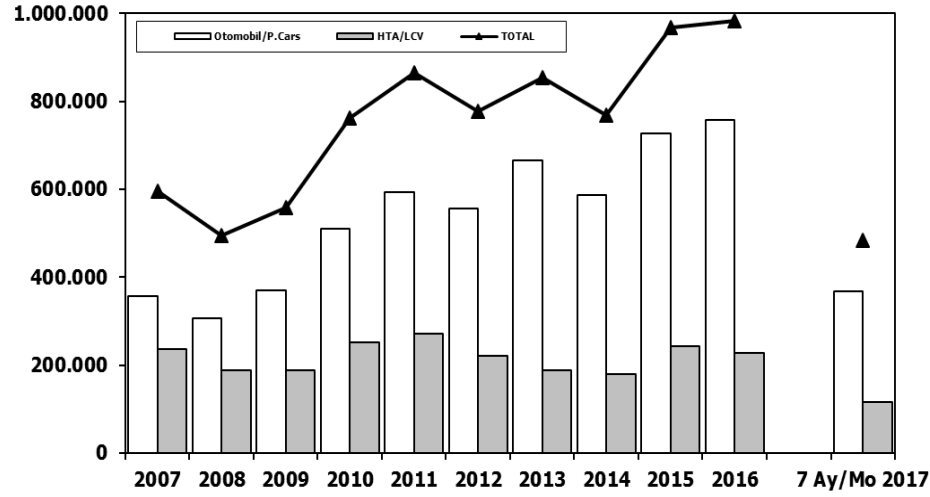
LCV Total Market (x1000)



Aylar / Months	10 Yil Ort. 10 Yrs Avr. (x1000)	2017 (x1000)	%	1	2	3	4	5	6	7	8	9	10	11	12	7 Ay/Mo	Total
1	9,8	9,6	-1,5	9.931	11.972	17.554	17.162	18.871	18.548	19.244	22.089	18.919	20.156	23.670	39.181	113.282	237.297
2	12,2	12,3	1,1	12.939	14.055	19.502	17.388	17.121	17.600	16.626	17.568	16.879	13.096	9.052	16.199	115.231	188.025
3	17,9	18,2	1,8	6.433	7.250	14.489	16.438	19.003	20.048	12.208	13.072	29.235	7.205	10.181	31.745	95.869	187.307
4	17,8	18,0	0,9	7.501	10.521	17.811	18.397	18.910	18.810	19.946	19.542	21.337	25.545	23.901	48.908	111.896	251.129
5	18,8	19,6	4,3	15.024	19.659	24.380	23.860	24.344	24.859	19.526	19.531	20.165	21.913	18.706	38.953	151.652	270.920
6	18,8	17,5	-6,7	8.468	12.135	17.614	17.304	20.403	20.218	17.773	16.912	20.269	16.498	19.413	34.474	113.915	221.481
7	16,7	19,9	19,2	9.688	11.493	16.989	16.576	19.085	15.806	15.884	13.432	15.038	11.029	15.184	28.519	105.521	188.723
2014	8,302	7,854	9,769	8.302	7.854	9.769	10.536	11.742	12.885	13.305	15.068	17.269	15.759	20.926	36.935	74.393	180.350
2015	10,117	14,514	21,626	10.117	14.514	21.626	21.391	18.664	18.392	19.618	20.824	16.937	16.301	22.204	41.833	124.322	242.421
2016	9,355	12,237	18,973	9.355	12.237	18.973	19.269	20.072	20.429	12.967	17.579	16.253	19.254	26.526	33.868	113.302	226.782
2017	9,634	12,307	18,186	9.634	12.307	18.186	17.990	19.623	17.494	19.913						115.147	115.147

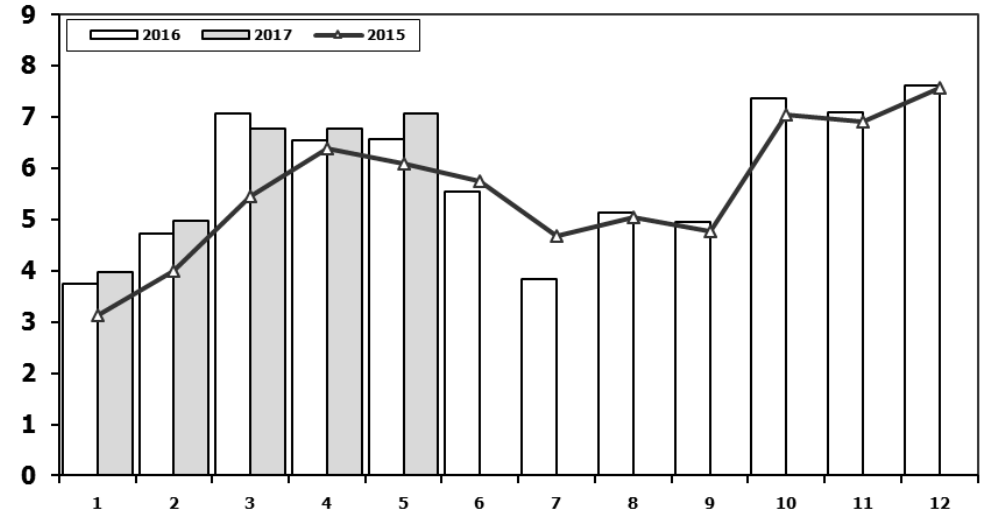
Hafif Araç Pazarı (AYA < 3.5 Ton)

Light Vehicle Market (GVW < 3.5 Ton)



Traktör Pazarı (x1000)

F.Tractor Market (x1000)



	2007	2008	2009	2010	2011	2012	2013	2014	2015	2016	7 Ay/Mo 2017
Otomobil/P.Cars	357.465	305.998	369.819	509.784	593.519	556.280	664.655	587.331	725.596	756.938	368.308
HTA/LCV	237.297	188.025	187.307	251.129	270.920	221.481	188.723	180.350	242.421	226.782	115.147
TOTAL	594.762	494.023	557.126	760.913	864.439	777.761	853.378	767.681	968.017	983.720	483.455
HTA/LCV (%)	40	38	34	33	31	28	22	23	25	23	24

	1	2	3	4	5	6	7	8	9	10	11	12	5 Ay/Mo	Total
2007	2.816	2.244	3.053	2.657	3.188	3.141	2.497	2.381	3.025	2.755	3.549	3.097	13.958	34.403
2008	2.770	1.855	3.395	3.081	2.769	2.400	2.232	2.485	1.856	1.773	1.305	1.101	13.870	27.022
2009	717	572	688	1.070	1.297	1.256	1.054	1.183	1.117	1.356	1.304	2.144	4.344	13.758
2010	1.111	1.991	2.330	3.039	2.567	2.638	1.965	3.019	2.806	4.424	3.978	6.168	11.038	36.036
2011	2.975	5.242	5.927	5.358	6.016	6.335	4.534	4.051	4.140	5.828	4.943	4.992	25.518	60.341
2012	2.362	1.983	4.348	6.579	6.273	4.569	3.837	3.158	3.618	4.027	4.807	4.757	21.545	50.318
2013	2.161	2.432	4.005	4.585	5.616	3.136	4.574	3.408	4.935	4.762	5.781	6.891	18.799	52.286
2014	2.169	3.512	4.476	4.905	5.094	5.028	4.233	4.920	5.619	5.743	6.250	7.409	20.156	59.358
2015	3.124	3.984	5.460	6.383	6.078	5.748	4.677	5.044	4.765	7.049	6.898	7.564	25.029	66.774
2016	3.739	4.731	7.067	6.546	6.575	5.543	3.833	5.134	4.945	7.372	7.090	7.603	28.658	70.178
2017	3.974	4.964	6.773	6.780	7.057								29.548	29.548

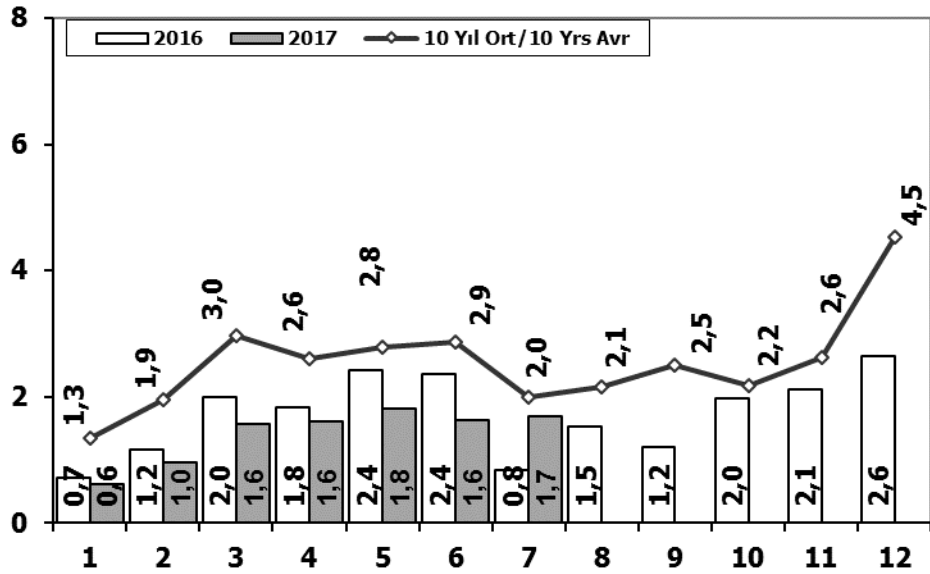
Kaynak: TÜİK trafik kayıtları.

Rakamlar, son iki model yılına ait traktör tescillerinden oluşmaktadır.

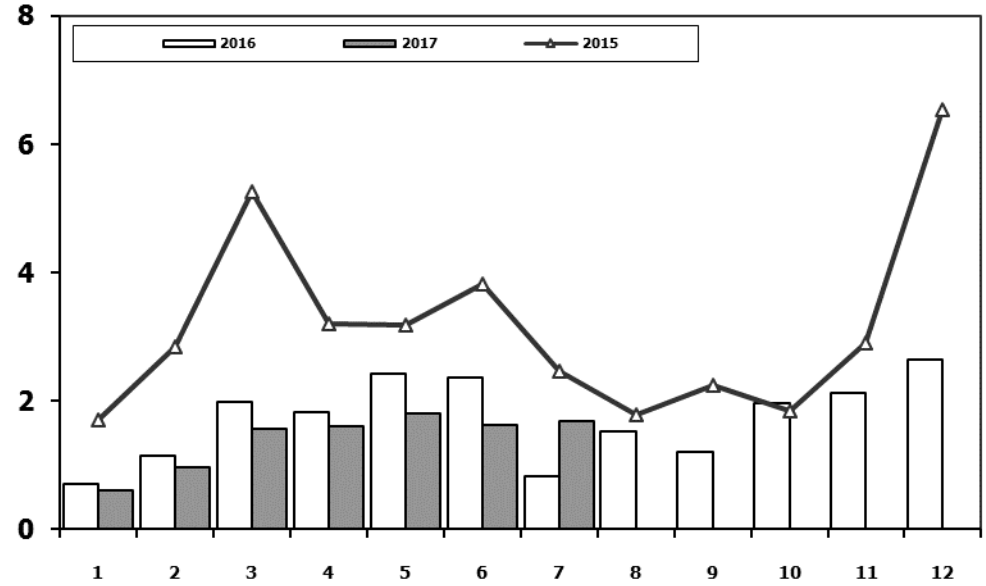
Source: Turkish Statistical Institute – Traffic registrations

Data represents the last two model year's farm tractors registration figures

Kamyon Pazarının Analizi (x1000) AYA > 5 Ton Truck Market Analysis (x1000) GVW > 5 Ton



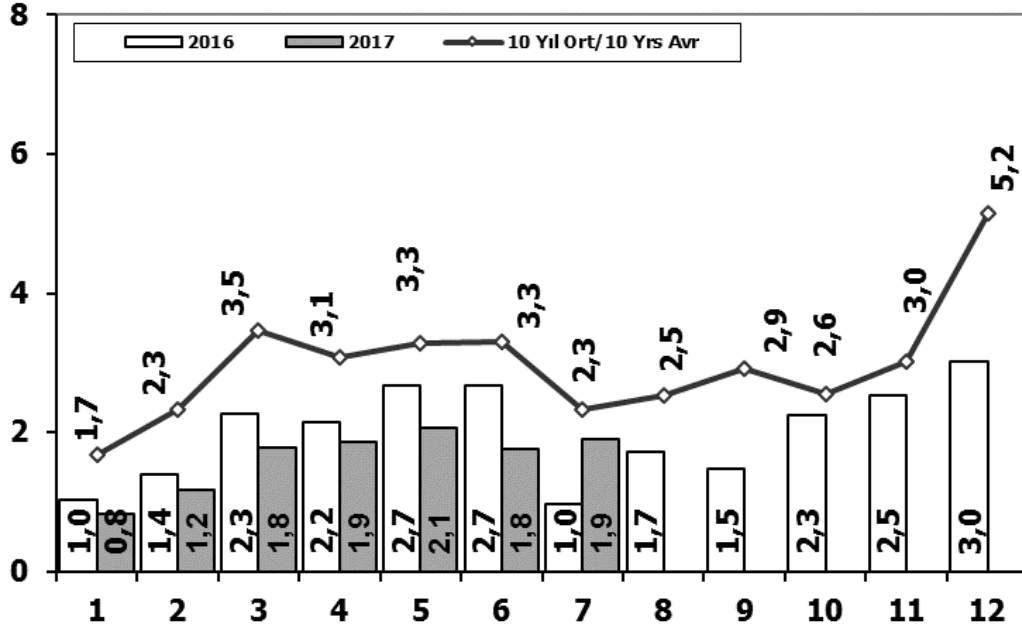
Kamyon Pazarı (x1000) AYA > 5 Ton Truck Market (x1000) GVW > 5 Ton



Aylar / Months	10 Yil Ort. 10 Yrs Avr. (x1000)	2017 (x1000)	%	1	2	3	4	5	6	7	8	9	10	11	12	7 Ay/Mo	Total	
				2007	1.554	2.055	3.065	2.940	2.865	2.613	2.372	3.145	2.988	2.886	3.258	4.444	17.464	34.185
				2008	1.797	2.309	2.621	2.578	2.459	2.526	2.067	2.377	2.390	1.790	1.512	1.834	16.357	26.260
				2009	771	759	1.034	1.342	1.355	1.651	1.156	1.205	1.780	866	981	2.015	8.068	14.915
1	1,3	0,6	-54,8	2010	777	968	1.772	1.807	1.966	2.205	2.093	2.446	2.444	3.071	3.136	5.677	11.588	28.362
2	1,9	1,0	-50,4	2011	2.552	3.292	4.418	3.754	3.803	3.749	1.996	2.478	3.081	2.774	3.108	5.787	23.564	40.792
3	3,0	1,6	-47,1	2012	1.375	2.159	3.595	2.697	3.321	3.250	2.450	2.277	2.991	2.244	3.006	5.000	18.847	34.365
4	2,6	1,6	-38,0	2013	1.077	1.931	3.127	2.720	3.145	2.951	2.411	1.845	2.554	1.801	3.173	5.025	17.362	31.760
5	2,8	1,8	-35,3	2014	1.117	1.949	2.818	3.092	3.405	3.438	2.083	2.390	3.281	2.494	3.028	6.313	17.902	35.408
6	2,9	1,6	-43,3	2015	1.705	2.841	5.270	3.208	3.190	3.824	2.463	1.798	2.244	1.848	2.902	6.540	22.501	37.833
7	2,0	1,7	-15,2	2016	718	1.154	1.984	1.835	2.420	2.358	830	1.529	1.204	1.962	2.123	2.640	11.299	20.757
Total	16,5	9,9	-40,2	2017	607	964	1.570	1.611	1.807	1.621	1.689						9.869	9.869

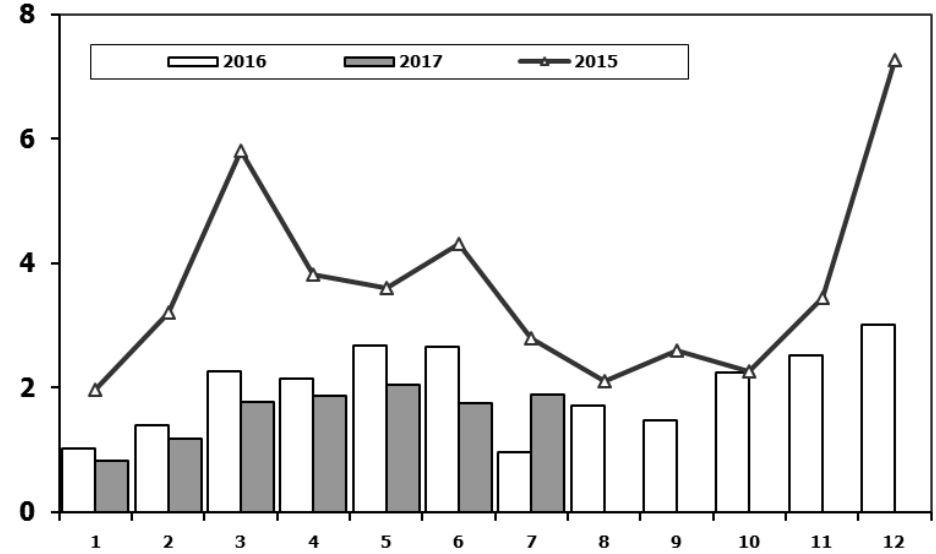
Ağır Ticari Araç Pazarının Analizi (x1000)

HCV Market Analysis (x1000)



Ağır Ticari Araç Pazarı (x1000)

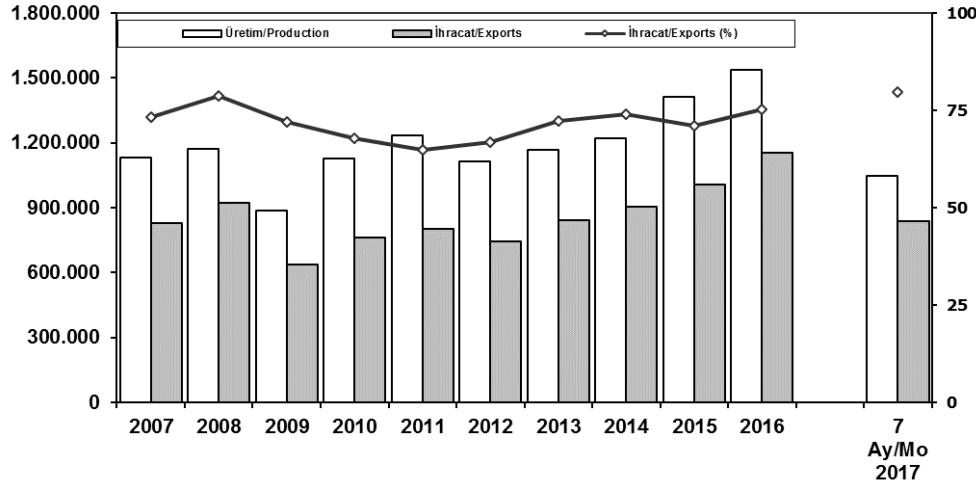
HCV Market (x1000)



Aylar / Months	10 Yil Ort. 10 Yrs Avr. (x1000)	2017 (x1000)	%	1	2	3	4	5	6	7	8	9	10	11	12	7 Ay/Mo	Total
2007				1.833	2.518	3.598	3.267	3.317	2.987	2.627	3.613	3.497	3.333	3.704	5.150	20.147	39.444
2008				2.265	2.870	3.165	3.266	3.029	3.069	2.536	2.922	2.897	2.263	1.899	2.340	20.200	32.521
2009				1.025	1.104	1.420	1.786	1.696	2.035	1.401	1.483	2.006	1.084	1.240	2.463	10.467	18.743
2010				955	1.141	2.059	2.133	2.251	2.494	2.373	2.881	2.787	3.376	3.444	6.365	13.406	32.259
2011				2.766	3.685	4.930	4.376	4.447	4.290	2.320	2.972	3.514	3.219	3.538	6.371	26.814	46.428
2012				1.674	2.503	4.073	3.065	3.957	3.714	2.818	2.700	3.568	2.739	3.335	5.713	21.804	39.859
2013				1.617	2.624	3.914	3.440	3.953	3.675	3.130	2.340	3.074	2.385	3.716	5.878	22.353	39.746
2014				1.555	2.287	3.383	3.461	3.788	3.789	2.299	2.640	3.649	2.686	3.316	6.952	20.562	39.805
2015				1.961	3.202	5.819	3.829	3.603	4.305	2.789	2.106	2.597	2.265	3.442	7.259	25.508	43.177
2016				1.027	1.398	2.266	2.154	2.672	2.663	972	1.713	1.475	2.251	2.530	3.016	13.152	24.137
2017				823	1.176	1.779	1.861	2.054	1.758	1.892						11.343	11.343

İhracat/Üretim (2007-2017) (Traktör dahil)

Exports/Production (2007-2017) (Including F.Tractor)



Taşıt Araçları İhracatı (2015-2017)

Motor Vehicle Exports (2015-2017)

SEKTÖR/SECTOR	2015	2016	2016	2017	2017/2016 (%)
			7 Ay-7 Mo		
OTOMOBİL / P.Cars	604.683	745.709	388.449	580.084	49
TİCARİ ARAÇLAR / CV	387.652	395.673	246.902	248.272	1
* Kamyonet/Pick-Up	341.834	347.949	221.846	211.114	-5
* Minibüs/Minibus	38.255	34.790	17.803	28.132	58
* Kamyon/Truck	1.408	5.521	3.032	4.524	49
* Midibüs/Midibus	447	915	437	337	-23
* Otobüs/Bus	5.708	6.498	3.784	4.165	10
TAŞIT ARAÇLARI / MV TOTAL	992.335	1.141.382	635.351	828.356	30
TRAKTÖR/F.TRACTOR	14.932	13.651	8.870	7.822	-12
TOTAL	1.007.267	1.155.033	644.221	836.178	30

	2007	2008	2009	2010	2011	2012	2013	2014	2015	2016	7 Ay/Mo 2017
Üretim/Production	1.132.951	1.171.917	884.466	1.124.982	1.234.637	1.115.233	1.166.043	1.218.848	1.410.034	1.536.673	1.048.103
İhracat/Exports	829.879	920.763	637.855	763.670	801.112	745.354	843.467	902.194	1.007.267	1.155.033	836.178
İhracat/Exports (%)	73	79	72	68	65	67	72	74	71	75	80

Otomotiv Ana ve Yan Sanayii İhracatı (ABD \$)

CBU and CKD Exports - \$

Sektör / Sector	2013	2014	2015	2016	2016	2017	2017/2016 (%)
					Ocak-Temmuz / January-July		
Yan Sanayi İhracatı/Total Component Exports	9.065.017.539	9.504.013.791	8.641.977.425	8.947.915.672	5.226.623.709	5.502.762.353	5%
İç ve Dış Lastik / Tyres	1.130.005.891,78	1.126.709.610,14	960.550.807	978.284.060	560.892.935	637.238.957	14%
Emniyet Camı / Safety Glasses	135.230.309,67	143.208.298,99	124.564.841	119.569.736	71.435.102	76.213.777	7%
Motor (Engine)	319.294.885,46	171.893.752,32	221.897.271	370.561.589	213.291.189	272.071.002	28%
Akümülatör / Batteries	306.451.449,47	289.101.198,21	220.462.827	224.590.660	106.297.263	138.490.742	30%
Diğer Aksam ve Parça / Spare Parts&Components	7.174.035.002,35	7.773.100.931,83	7.114.501.679	7.254.909.627	4.274.707.221	4.378.747.875	2%
Ana Sanayi İhracatı/Total Vehicle Exports	12.491.591.365	13.259.499.977	12.977.346.859	15.302.074.705	8.449.311.862	11.520.708.096	36%
Otobüs / Bus	937.790.962,87	985.983.007,01	1.023.556.746	1.190.475.986	706.377.588	751.224.257	6%
Midibüs-Minibüs / Minibus- Minibus	147.769.644,17	97.685.509,12	130.195.838	238.911.957	130.448.809	147.844.262	13%
Otomobil (P. Cars)	6.855.475.589,83	7.258.361.005,24	6.881.867.274	8.336.946.503	4.177.356.034	7.150.428.889	71%
Kamyon-Kamyonet/HCV-LCV	3.918.798.755,31	4.201.760.813,55	4.264.018.829	4.616.562.139	2.863.155.316	2.887.477.560	1%
Römork ve Yarı Römork/Trailer-Semi Trailer	218.385.731,69	252.354.014,20	252.397.167	265.323.711	181.678.143	129.936.811	-28%
Çekici/Truck-Tractor	77.907.406,95	38.396.524,81	48.108.959	316.355.575	179.193.595	268.250.588	50%
Tarım Traktörü/Farm Tractor	335.463.274,61	424.959.103,39	377.202.046	337.498.834	211.102.378	185.545.729	-12%
Toplam/Total	21.556.608.904	22.763.513.769	21.619.324.284	24.249.990.377	13.675.935.571	17.023.470.449	24%

Kaynak: Uludağ İhracatçı Birlikleri . UİB tarafından OSD için özel olarak analiz edilen Otomotiv İhracatı kapsamında; UİB Türkiye Genel Otomotiv Endüstrisi sınıflandırmasına kıyasla "Römork ve Yarı Römork", "Tarım Traktörü" verileri dahil edilmekte; "Kullanılmış Araçlar", "İki Tekerlekli Taşıtlar", "Demiryolu Taşıtları" hariç tutulmaktadır.

Source: Uludağ Exporters Association - Special Analyze for OSD

Compared to Turkish General Automotive Industry classification, this special analyze includes; farms tractors, trailers and semi-trailers, does not include; used vehicles, two-wheeled vehicles and railway vehicles.

Sektör Bazında İhracat (1000 \$)

Exports on Sectorial Basis

SEKTÖRLER (1.000 \$)	TEMMUZ				OCAK - TEMMUZ				SON 12 AYLIK			
	2016	2017	Değişim ('17/'16)	Pay(17)	2016	2017	Değişim ('17/'16)	Pay(17)	2016	2017	Değişim ('17/'16)	Pay(17)
Otomotiv Endüstrisi	1.724.587	2.433.838	41,1	21,2	13.458.660	16.789.438	24,7	18,9	22.478.520	27.218.145	21,1	18,1
Hazırgiyim ve Konfeksiyon	1.246.141	1.482.981	19,0	12,9	9.957.431	9.680.125	-2,8	10,9	17.266.595	16.679.257	-3,4	11,1
Kimyevi Maddeler ve Mamulleri	960.854	1.190.293	23,9	10,4	7.959.741	9.104.995	14,4	10,2	14.096.789	15.082.665	7,0	10,1
Çelik	603.973	799.373	32,4	7,0	5.054.950	6.613.275	30,8	7,4	8.796.981	10.631.585	20,9	7,1
Elektrik Elektronik ve Hizmet	627.925	809.881	29,0	7,1	5.573.611	5.557.536	-0,3	6,2	10.153.443	9.956.894	-1,9	6,6
Tekstil ve Hammaddeleri	517.401	604.871	16,9	5,3	4.520.583	4.587.100	1,5	5,2	7.847.809	7.933.701	1,1	5,3
Demir ve Demir Dışı Metaller	408.612	533.440	30,5	4,6	3.428.466	3.789.163	10,5	4,3	6.004.371	6.306.576	5,0	4,2
Hububat, Bakliyat, Yağlı Tohumlar ve Mamulleri	385.329	430.764	11,8	3,8	3.554.833	3.651.224	2,7	4,1	6.189.812	6.455.370	4,3	4,3
Makine ve Aksamları	351.488	475.703	35,3	4,1	3.060.221	3.315.677	8,3	3,7	5.378.839	5.558.117	3,3	3,7
Madencilik Ürünleri	271.363	386.450	42,4	3,4	2.030.864	2.665.491	31,2	3,0	3.575.428	4.421.871	23,7	2,9
TOPLAM	8.742.327	11.473.658	31,2	100,0	80.325.765	88.926.250	10,7	100,0	139.602.361	150.022.270	7,5	100,0

Kaynak: TİM

Temmuz ayı ihracat verilerine, "İhracatçı Birlikleri Kaydından Muaf İhracat" verisi dahil değildir.

Source: TİM

Exportation data for July does not include "Exempted Exports from the Exporters' Union Registration".

First 3 Sectors:

- 1- Automotive Industry
- 2- Ready Wear and Confection
- 3- Chemical Articles and Products

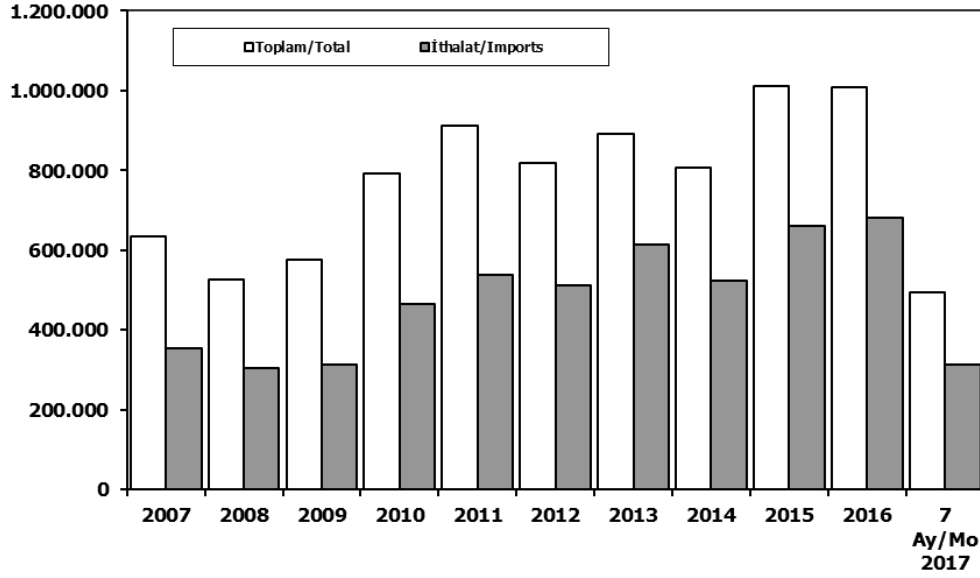
Firma Bazında İhracat (Adet)

Export Of Member Companies (Unit)

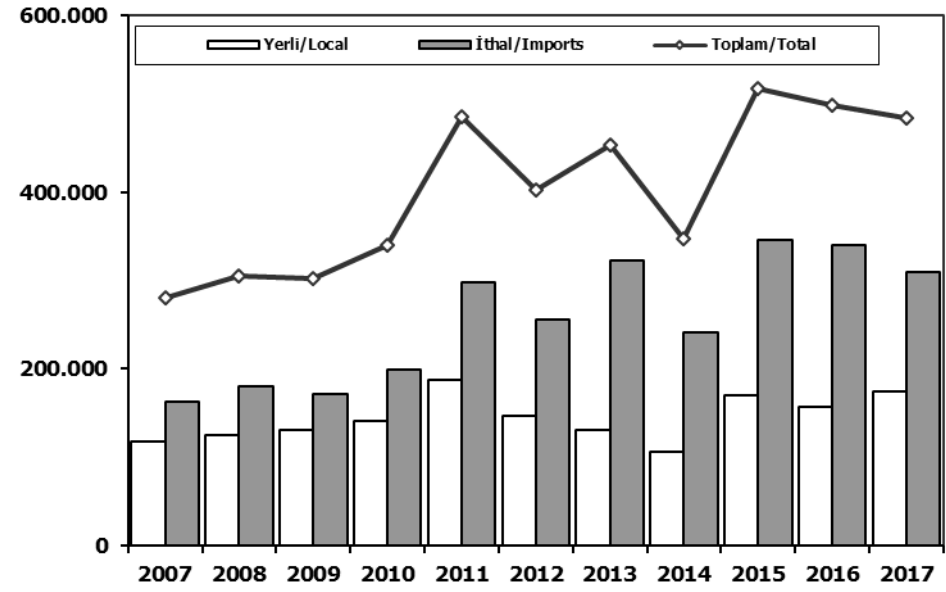
FİRMALAR Companies	2015	2016	Ocak-Temmuz 7 Months	
			2016	2017
OYAK RENAULT	270.299	270.088	154.686	182.835
FORD OTOSAN	252.571	256.706	156.988	179.085
TOFAŞ	173.743	279.444	155.516	177.879
TOYOTA	81.962	109.184	38.042	152.933
HYUNDAI ASSAN	201.276	207.234	120.330	120.482
TÜRK TRAKTÖR	14.122	12.625	8.241	7.155
M. BENZ TÜRK	4.252	8.307	4.883	6.305
HONDA TÜRKİYE	2.220	2.914	1.152	5.260
KARSAN	3.067	3.629	1.654	1.293
MAN TÜRKİYE	1.493	1.717	1.030	1.219
HATTAT TARIM	810	1.026	629	667
TEMSA GLOBAL	441	653	359	431
OTOKAR	720	833	453	371
A.I.O.S.	291	673	258	263
GENEL TOPLAM	1.007.267	1.155.033	644.221	836.178

Kaynak: OSD

Toplam Pazar (Otomobil+T.Araç) Total Market (P.Cars+C.V)



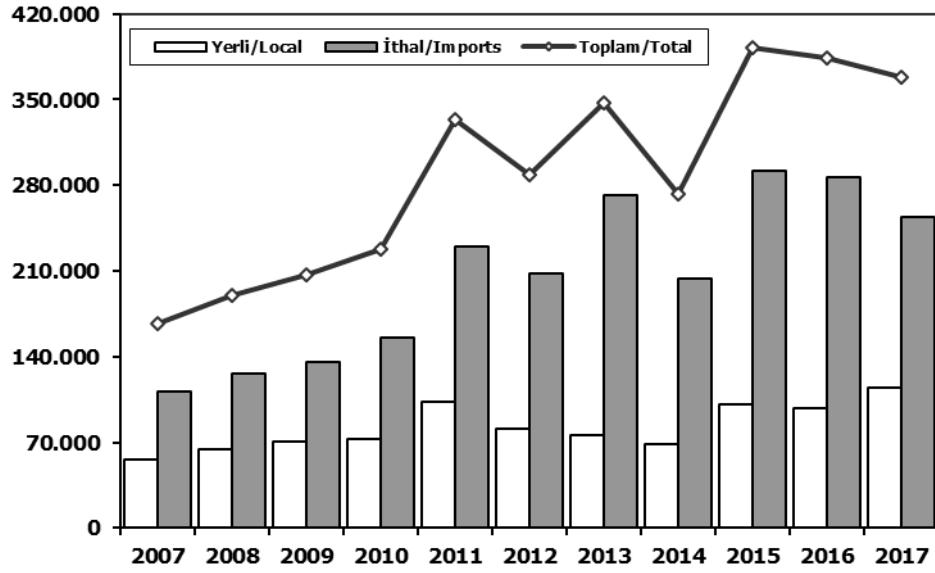
Hafif Araçlar Pazarı (2007-2017 Ocak-Temmuz) LV Market (2007-2017 January-July)



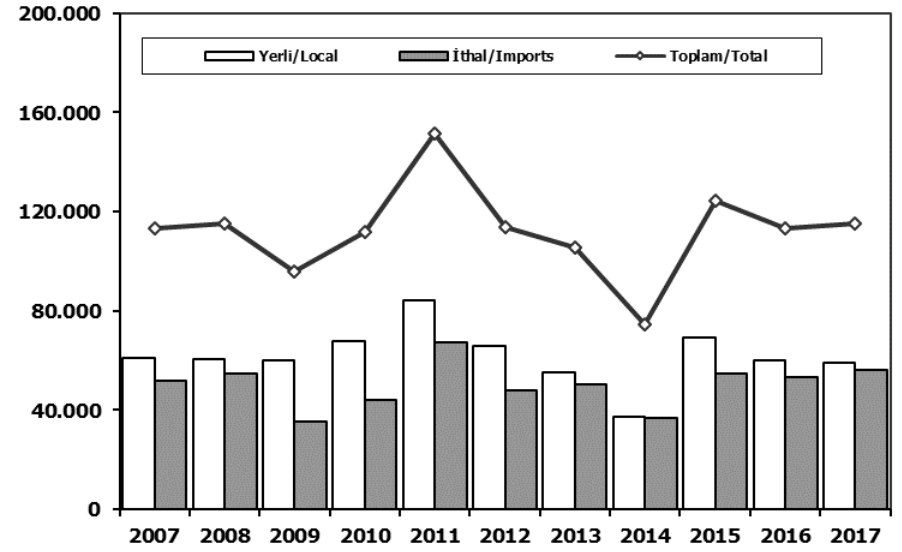
	2007	2008	2009	2010	2011	2012	2013	2014	2015	2016	7 Ay/Mo 2016	7 Ay/Mo 2017
Toplam/Total	634.206	526.544	575.869	793.172	910.867	817.620	893.124	807.486	1.011.194	1.007.857	510.502	494.798
İthalat/Imports	355.752	306.087	313.921	465.408	538.532	511.694	615.609	522.842	660.045	681.308	344.524	313.512
İthalat/Imports (%)	56	58	55	59	59	63	69	65	65	68	67	63

	2007	2008	2009	2010	2011	2012	2013	2014	2015	2016	2017
Yerli/Local	117.358	124.579	130.914	140.328	187.856	146.652	131.242	106.223	170.103	157.337	173.705
İthal/Imports	163.301	180.627	171.288	199.272	297.060	256.284	322.097	240.545	346.283	340.013	309.750
Toplam/Total	280.659	305.206	302.202	339.600	484.916	402.936	453.339	346.768	516.386	497.350	483.455
İthalat/Imports (%)	58	59	57	59	61	64	71	69	67	68	64

Otomobil Pazarı (2007-2017 Ocak-Temmuz) P.Cars Market (2007-2017 January-July)

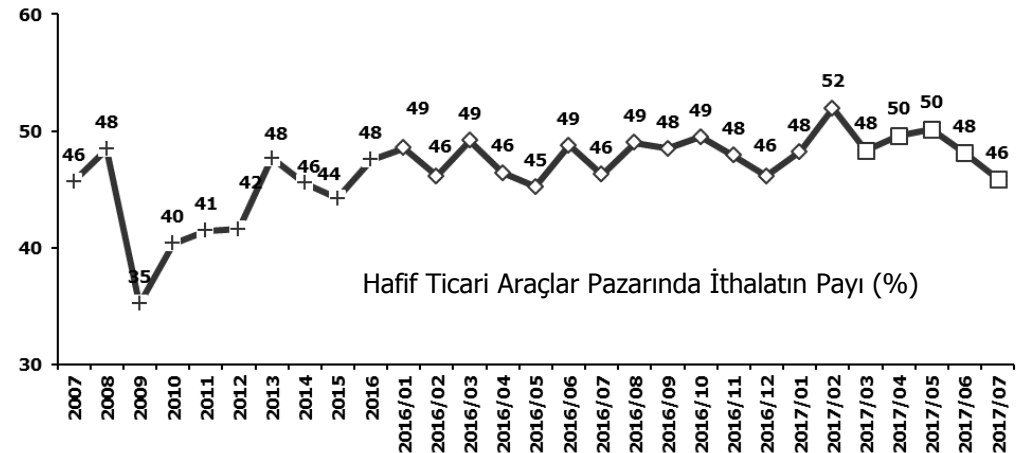
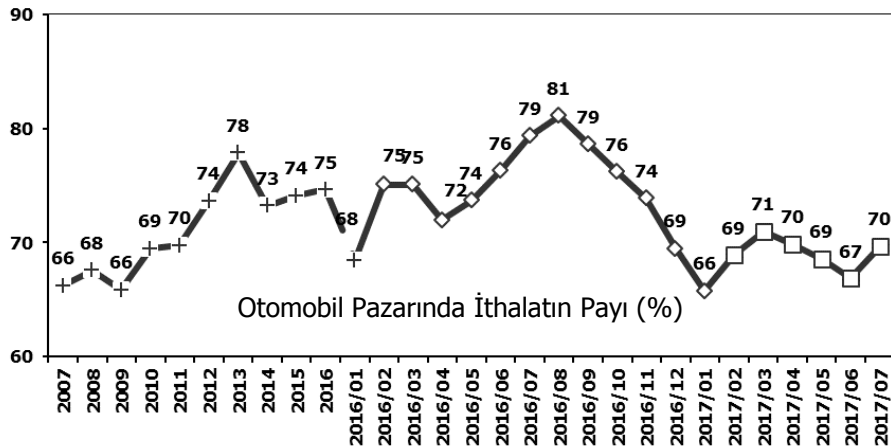


Hafif Ticari Araçlar Pazarı (2007-2017 Ocak-Temmuz) Light Commercial Vehicle Market (2007-2017 January-July)



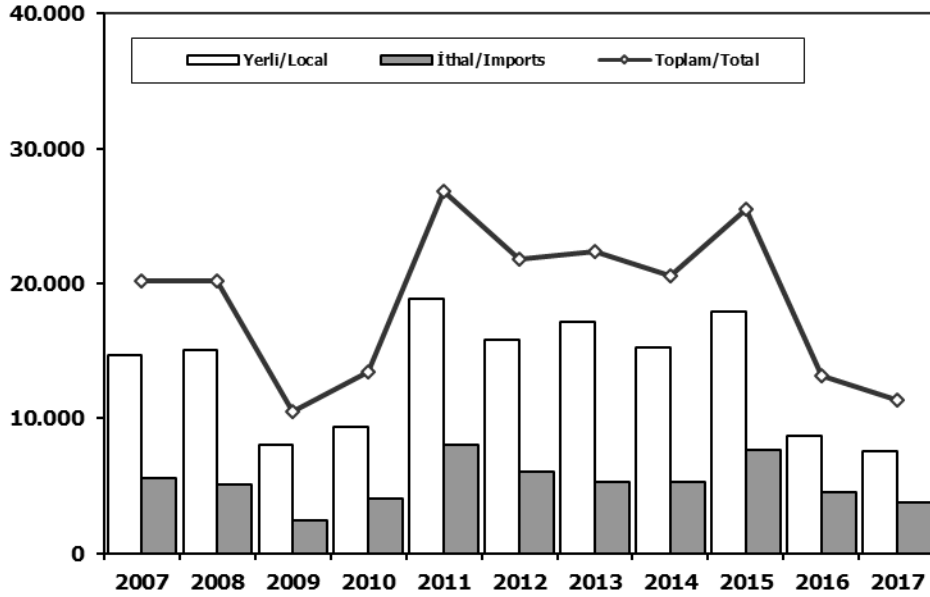
	2007	2008	2009	2010	2011	2012	2013	2014	2015	2016	2017
Yerli/Local	56.142	64.013	70.658	72.553	103.557	80.884	76.152	68.746	100.761	97.512	114.705
İthal/Imports	111.235	125.962	135.675	155.151	229.707	208.137	271.666	203.629	291.303	286.536	253.603
Toplam/Total	167.377	189.975	206.333	227.704	333.264	289.021	347.818	272.375	392.064	384.048	368.308
İthalat/Imports (%)	66	66	66	68	69	72	78	75	74	75	69

	2007	2008	2009	2010	2011	2012	2013	2014	2015	2016	2017
Yerli/Local	61.216	60.566	60.256	67.775	84.299	65.768	55.090	37.477	69.342	59.825	59.000
İthal/Imports	52.066	54.665	35.613	44.121	67.353	48.147	50.431	36.916	54.980	53.477	56.147
Toplam/Total	113.282	115.231	95.869	111.896	151.652	113.915	105.521	74.393	124.322	113.302	115.147
İthalat/Imports (%)	46	47	37	39	44	42	48	50	44	47	49



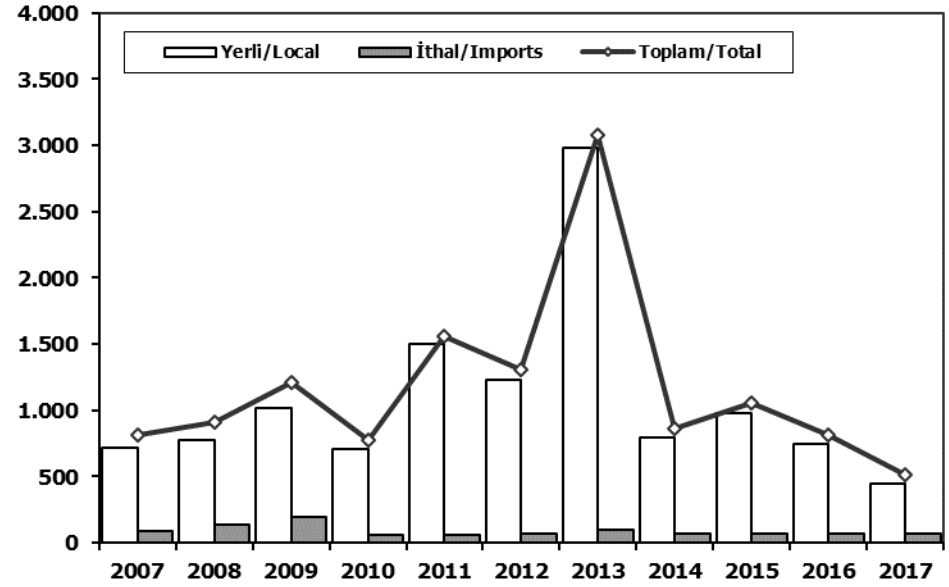
Ağır Ticari Araçlar Pazarı (2007-2017 Ocak-Temmuz)

HCV Market (2007-2017 January-July)



Otobüs Pazarı (2007-2017 Ocak-Temmuz)

Bus Market (2007-2017 January-July)

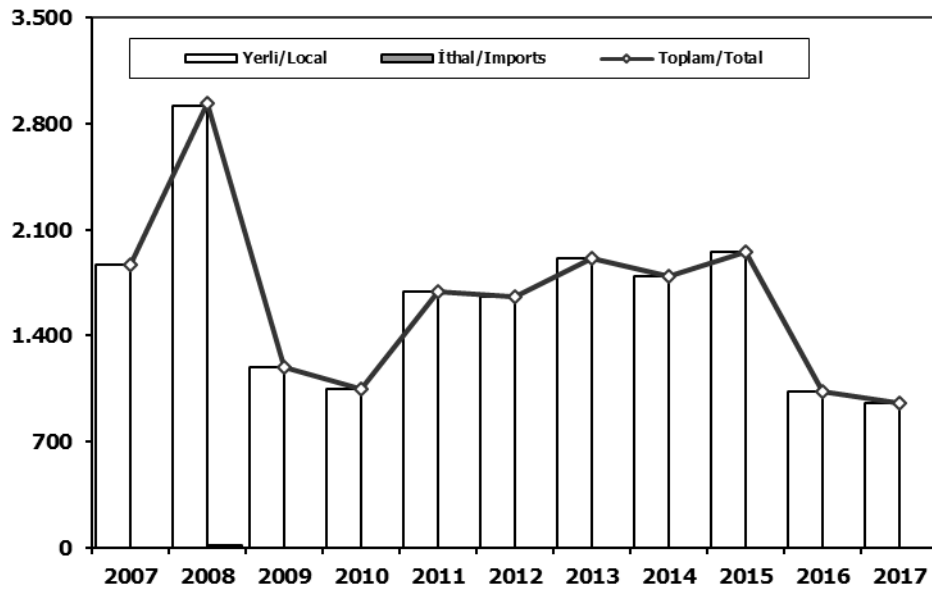


	2007	2008	2009	2010	2011	2012	2013	2014	2015	2016	2017
Yerli/Local	14.622	15.075	8.056	9.345	18.834	15.788	17.094	15.265	17.880	8.641	7.581
İthal/Imports	5.525	5.125	2.411	4.061	7.980	6.016	5.259	5.297	7.628	4.511	3.762
Toplam/Total	20.147	20.200	10.467	13.406	26.814	21.804	22.353	20.562	25.508	13.152	11.343
İthalat/Imports (%)	27	25	23	30	30	28	24	26	30	34	33

	2007	2008	2009	2010	2011	2012	2013	2014	2015	2016	2017
Yerli/Local	721	772	1.015	709	1.503	1.234	2.981	794	983	749	448
İthal/Imports	92	138	194	64	55	69	95	70	70	70	70
Toplam/Total	813	910	1.209	773	1.558	1.303	3.076	864	1.053	819	518
İthalat/Imports (%)	11	15	16	8	4	5	3	8	7	9	14

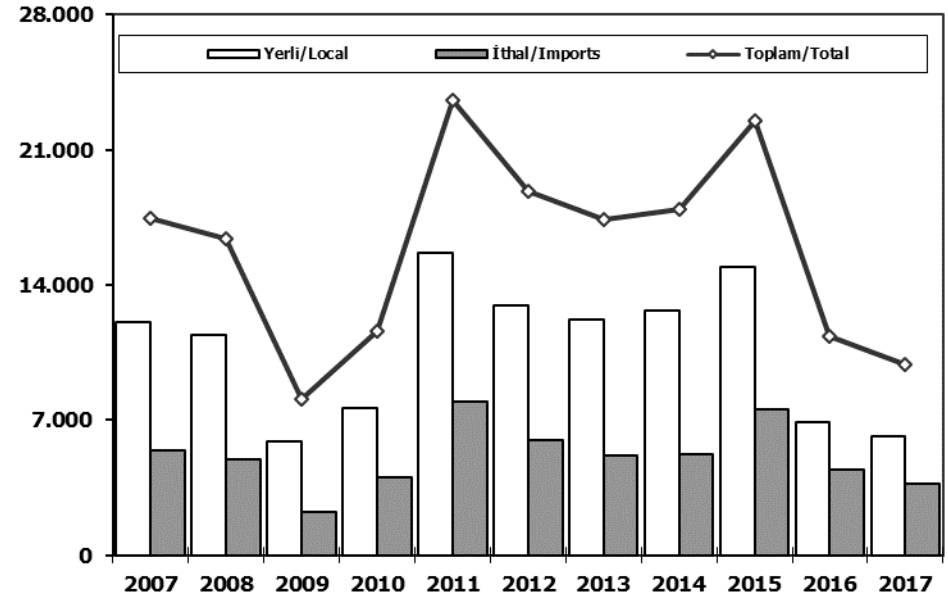
Midibüs Pazarı (2007-2017 Ocak-Temmuz) (7-9 mt / 25-35 Kişilik)

Midibus Market (2007-2017 January-July) (7-9 mt / 25-35 Passengers)



Kamyon Pazarı (2007-2017 Ocak-Temmuz)

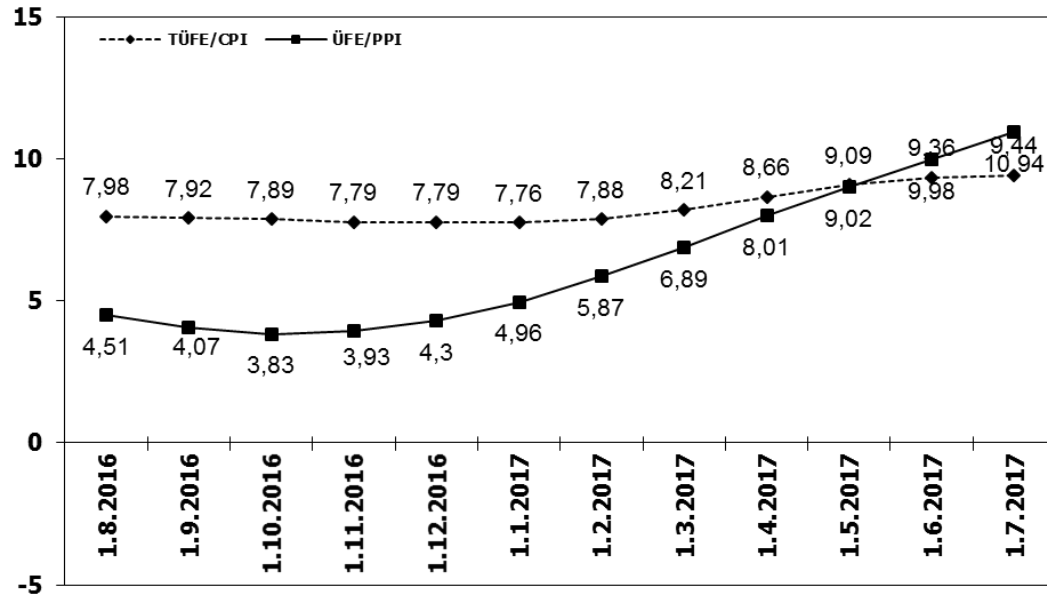
Truck Market (2007-2017 January-July)



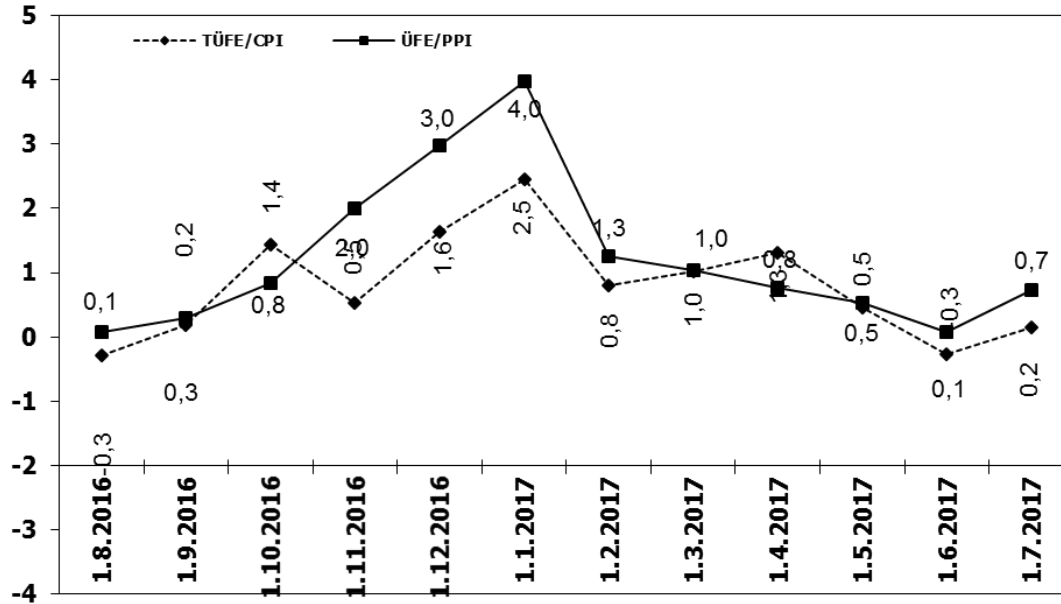
	2007	2008	2009	2010	2011	2012	2013	2014	2015	2016	2017
Yerli/Local	1.870	2.922	1.190	1.045	1.692	1.654	1.915	1.796	1.954	1.034	956
İthal/Imports	0	11	0	0	0	0	0	0	0	0	0
Toplam/Total	1.870	2.933	1.190	1.045	1.692	1.654	1.915	1.796	1.954	1.034	956
İthalat/Imports (%)	0	0	0	0	0	0	0	0	0	0	0

	2007	2008	2009	2010	2011	2012	2013	2014	2015	2016	2017
Yerli/Local	12.031	11.381	5.851	7.591	15.639	12.900	12.198	12.675	14.943	6.858	6.177
İthal/Imports	5.433	4.976	2.217	3.997	7.925	5.947	5.164	5.227	7.558	4.441	3.692
Toplam/Total	17.464	16.357	8.068	11.588	23.564	18.847	17.362	17.902	22.501	11.299	9.869
İthalat/Imports (%)	31	30	27	34	34	32	30	29	34	39	37

TÜFE ve ÜFE'nin 12 Aylık Ort. Değişimi (%) CPI and PPI 12 Months Avr. Changes (%)



TÜFE ve ÜFE'nin Aylık Değişimi (%) CPI and PPI Monthly Changes (%)



2017 Yılı İthal Hafif Araç Satışları 2017 Light Vehicles Import Sales

2017 YILI İTHAL OTOMOBİL SATIŞLARI / P.Cars Import 2017

	2016 TOPLAMI 2016 Total	1	2	3	4	5	6	7	8	9	10	11	12	2017 TOPLAMI 2017 Total
VOLKSWAGEN	101.761	3.059	4.903	6.729	6.672	8.131	7.213	7.006						43.713
OPEL	55.471	1.577	1.652	4.014	3.838	3.654	4.055	4.365						23.155
DACIA	42.109	1.471	2.303	3.534	3.557	3.356	2.933	3.933						21.087
RENAULT	42.422	844	1.462	3.148	2.879	3.630	3.230	3.673						18.866
FORD	33.453	1.175	1.199	2.760	2.902	3.992	3.425	3.067						18.520
PEUGEOT	25.440	637	1.884	2.139	2.604	2.651	2.799	2.030						14.744
NISSAN	30.513	1.154	1.519	2.083	2.254	2.835	2.385	2.460						14.690
HYUNDAI	26.463	1.413	1.393	2.563	2.003	1.904	2.179	1.871						13.326
MERCEDES-BENZ	32.666	499	1.078	2.308	2.106	2.213	2.313	2.300						12.817
SKODA	28.876	925	1.225	1.335	2.144	1.655	1.931	2.133						11.348
AUDI	22.005	625	702	1.287	1.673	2.109	2.177	1.370						9.943
SEAT	20.637	536	623	1.103	1.583	1.651	2.436	1.789						9.721
CITROEN	17.041	515	761	1.765	1.654	1.504	1.473	1.339						9.011
BMW	27.166	570	900	1.346	877	1.814	1.409	1.904						8.820
KIA	14.398	426	481	630	1.097	1.110	1.003	1.065						5.812
TOYOTA	11.513	439	413	439	427	484	707	852						3.761
HONDA	8.714	206	255	642	618	660	666	583						3.630
VOLVO	4.100	155	213	232	340	400	374	275						1.989
SUZUKI	3.931	79	143	260	206	324	296	446						1.754
FIAT	3.103	106	187	229	185	178	145	117						1.147
JEEP	2.192	111	104	162	184	179	188	198						1.126
LAND ROVER	2.108	34	72	104	175	211	176	126						898
SUBARU	1.584	67	40	195	129	30	216	103						780
MAZDA	1.427	54	76	109	100	139	161	117						756
MINI	1.688	55	81	82	80	96	130	93						617
PORSCHE	827	66	61	61	35	31	62	82						398
MITSUBISHI	709	28	43	50	45	24	16	19						225
SSANGYONG	507	10	20	32	27	32	66	32						219
ALFA ROMEO	634	17	43	59	27	24	24	18						212
JAGUAR	481	6	10	23	36	49	23	39						186
SMART	192	2	7	20	19	28	8	10						94
DS	400	9	0	1	13	5	1	38						67
INFINITI	120	6	12	8	2	16	10	5						59
LEXUS	64	16	3	6	11	9	2	3						50
MASERATI	72	2	7	3	5	2	4	9						32
ASTON MARTIN	29	1	2	3	2	2	2	2						14
BENTLEY	9	1	2	0	1	1	1	0						6
FERRARI	18	0	1	3	1	0	1	0						6
LAMBORGHINI	7	0	0	0	1	1	1	1						4
CHERY	144	0	0	0	0	0	0	0						0
PROTON	51	0	0	0	0	0	0	0						0
TOPLAM	565.045	16.896	23.880	39.467	40.512	45.134	44.241	43.473	0	0	0	0	0	253.603

2017 YILI İTHAL HAFIF TİCARİ ARAÇ SATIŞLARI / Light Commercial Vehicles Import 2017

	2016 TOPLAMI 2016 Total	1	2	3	4	5	6	7	8	9	10	11	12	2017 TOPLAMI 2017 Total
VOLKSWAGEN	32.772	1.255	1.599	2.121	2.362	2.524	2.218	2.376						14.455
RENAULT	15.091	519	718	1.327	1.238	1.268	1.098	1.499						7.667
CITROEN	6.884	438	669	424	807	1.147	1.176	479						5.140
PEUGEOT	8.402	157	351	990	739	965	726	885						4.813
MERCEDES-BENZ	8.070	343	496	687	742	781	767	814						4.630
DACIA	5.422	235	348	523	615	658	650	642						3.671
FIAT	5.885	257	448	490	602	405	380	526						3.108
TOYOTA	5.645	356	451	489	304	243	211	375						2.429
KIA	3.952	193	240	384	306	386	150	358						2.017
FORD	4.878	250	270	371	212	270	220	228						1.821
HYUNDAI	2.244	134	174	242	308	357	243	224						1.682
MITSUBISHI	3.533	173	213	127	209	438	169	281						1.610
NISSAN	1.540	167	266	337	258	170	196	195						1.589
IVECO	2.175	146	133	250	205	210	152	171						1.267
SSANGYONG	254	9	4	21	12	15	51	56						168
SUZU	1.055	12	12	9	11	11	8	17						80
TATA	9	0	0	0	0	0	0	0						0
TOPLAM	107.811	4.644	6.392	8.792	8.930	9.848	8.415	9.126	0	0	0	0	0	56.147