



OTOMOTİV SANAYİİ DERNEĞİ  
AUTOMOTIVE MANUFACTURERS ASSOCIATION

# AYLIK RAPOR

## Automotive Industry Monthly Report

Şubat / February 2018

- **Üretim**/Production
- **Satış**/Sales
- **İthalat**/Imports
- **İhracat**/Exports

OSD "OICA" Üyesidir



OSD is a Member of "OICA"

## 2018 Şubat Ayı Özeti / 2018 February Summary

		ŞUBAT / FEBRUARY			2 AY/ 2 MONTHS			SON 12 AYLIK / YoY		
		2017	2018	2018/2017 (%)	2017	2018	2018/2017 (%)	2017	2018	2018/2017 (%)
<b>Üretim/Production</b>	<b>Toplam/Total</b>	138.368	141.372	2	266.488	265.719	0	1.534.080	1.694.962	10
	<b>Otomobil/P.Cars</b>	97.128	94.113	-3	190.810	179.481	-6	1.010.753	1.131.577	12
<b>Pazar/Market</b>	<b>Toplam/Total</b>	48.141	48.392	1	84.287	84.456	0	1.004.181	980.435	-2
	<b>Otomobil/P.Cars</b>	34.658	35.901	4	60.347	62.512	4	753.339	724.924	-4
<b>İthalat/Import</b>	<b>Toplam/Total</b>	30.668	29.967	-2	52.494	51.559	-2	676.012	623.463	-8
	<b>Otomobil/P.Cars</b>	23.880	24.049	1	40.776	40.881	0	559.366	506.073	-10
<b>İhracat/Export</b>	<b>Toplam/Total</b>	116.063	119.604	3	219.433	213.937	-3	1.193.318	1.327.297	11
	<b>Otomobil/P.Cars</b>	81.990	73.956	-10	158.482	147.364	-7	805.421	910.236	13
<b>İhracat / Export (\$)</b>	<b>Toplam/Total **</b>	2.254.309.131	2.847.266.334	26	4.336.318.466	5.180.409.622	19	25.011.225.783	29.831.506.187	19
	<b>Otomobil/P.Cars</b>	930.677.648	1.067.208.648	15	1.843.467.107	2.018.701.228	10	9.222.302.308	11.966.166.095	30

PARAMETRELER / PARAMETERS	ŞUBAT / FEBRUARY			2 AY/ 2 MONTHS			SON 12 AYLIK / YoY		
	2017	2018	2018/2017 (%)	2017	2018	2018/2017 (%)	2017	2018	2018/2017 (%)
<b>ÜFE/PPI</b>	1,26	2,68	**	5,29	3,69	**	5,87	15,50	**
<b>TÜFE/CPI</b>	0,81	0,73	**	3,29	1,76	**	7,88	11,23	**
<b>Sanayi Endeksi/Industry Index</b>	1,36	1,49	**	5,29	3,14	**	7,32	17,08	**
<b>\$ (*)</b>	3,6887	3,7756	2	3,6733	3,7663	3	3,1249	3,9485	26
<b>EURO (*)</b>	3,9450	4,6523	18	3,9123	4,6271	18	3,4339	4,5509	33
<b>Japon Yeni (*)</b>	3,2509	3,4663	7	3,2020	3,4235	7	2,8640	3,5220	23

**(\*) Ortalama Değerler / Average Values**

**(\*\*) Toplam Sanayi / Total Industry Including Components**

*Raporda yer alan üretim adetleri yalnızca OSD üyelerinin verilerini göstermektedir.  
Production units in this report only show the data of OSD members.*

## 2017/2018 Yılları Üretim

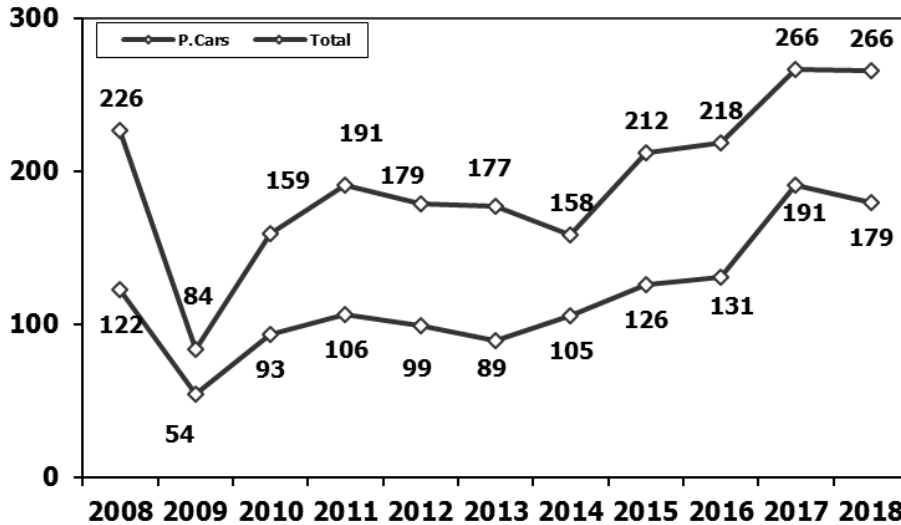
2017/2018 Production

K.KAMYON : AYA 3.5-12 Ton (L.Truck:GVW 3.5-12 Ton)

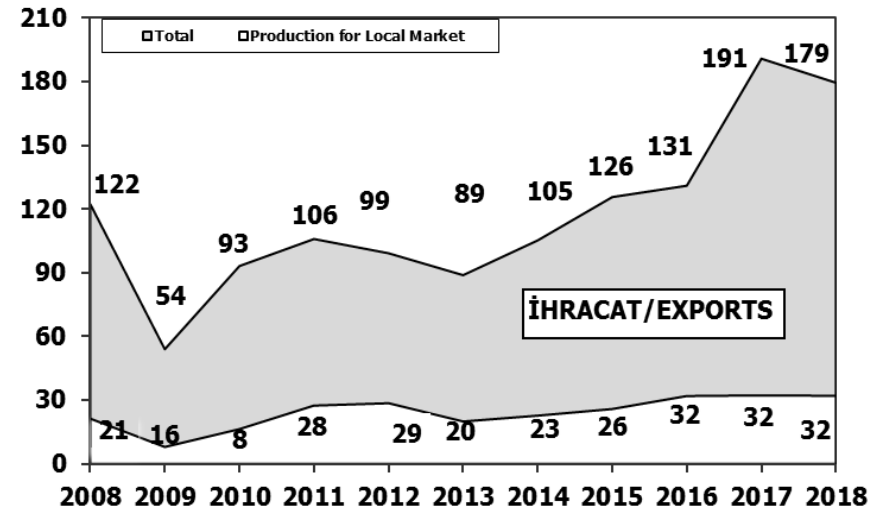
B.KAMYON : AYA 12 Ton'dan Büyük (M.Truck:GVW 12 Ton And Up)

ARAÇ TİPLERİ	ŞUBAT AYI ÜRETİMİ February Production		2 AYLIK ÜRETİM 2 Months Production		DEĞİŞİM % Percent Change %	
	2017	2018	2017	2018	ŞUBAT February	2 AY 2 Months
<b>OTOMOBİL - Pass.Car</b>	<b>97.128</b>	<b>94.113</b>	<b>190.810</b>	<b>179.481</b>	<b>-3</b>	<b>-6</b>
<b>TİCARİ ARAÇLAR - Commercial Vehicles</b>	<b>41.240</b>	<b>47.259</b>	<b>75.678</b>	<b>86.238</b>	<b>15</b>	<b>14</b>
* B. KAMYON - H. Truck	1.412	2.129	2.153	4.000	51	86
* K. KAMYON - L. Truck	266	424	449	692	59	54
* KAMYONET - Pick Up	34.823	39.738	63.771	71.960	14	13
* OTOBÜS - Bus	700	657	1.483	1.276	-6	-14
* MİNİBÜS - Minibus	3.791	3.962	7.373	7.665	5	4
* MİDİBÜS - Midibus	248	349	449	645	41	44
<b>TAŞIT ARAÇLARI TOPLAM - MV Total</b>	<b>138.368</b>	<b>141.372</b>	<b>266.488</b>	<b>265.719</b>	<b>2</b>	<b>0</b>
<b>TRAKTÖR - F.Tractor</b>	<b>3.868</b>	<b>4.508</b>	<b>7.488</b>	<b>9.072</b>	<b>17</b>	<b>21</b>
<b>GENEL TOPLAM - Grand Total</b>	<b>142.236</b>	<b>145.880</b>	<b>273.976</b>	<b>274.791</b>	<b>3</b>	<b>0</b>

**Toplam Üretim ve Otomobil Üretimi** (x1000) (Ocak-Şubat)  
Total & P.Cars Production (x1000) (January-February)

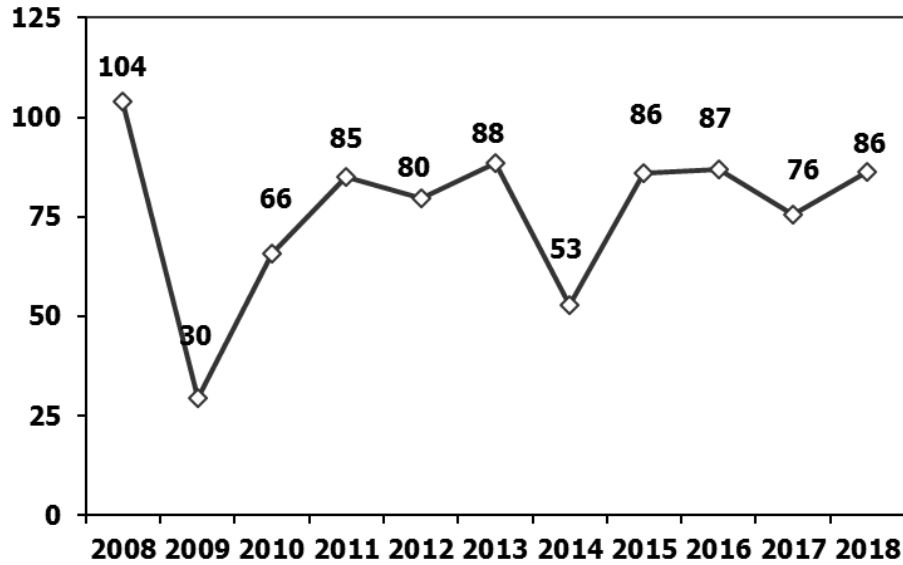


**Otomobil Üretimi ve İhracat** (x1000) (Ocak-Şubat)  
P.Cars Production & Exports (x1000) (January-February)



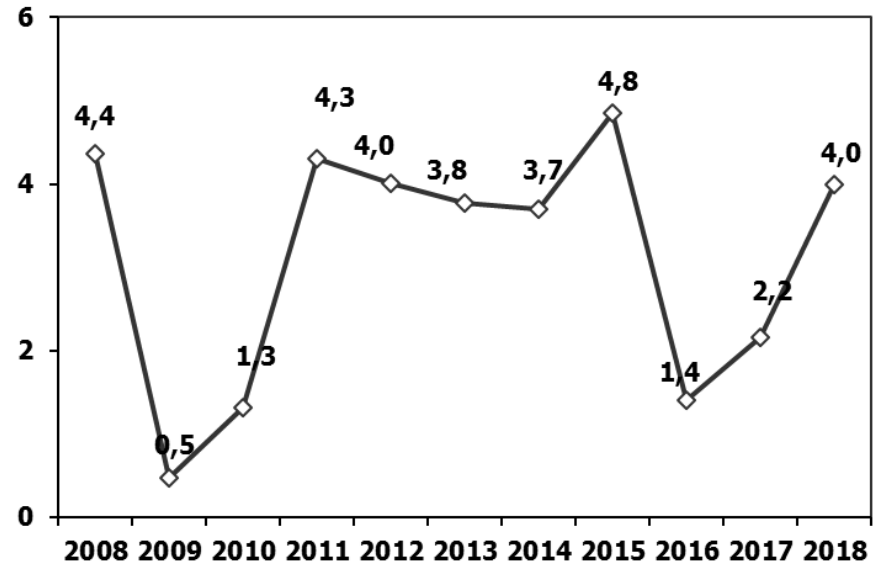
### Ticari Araç Üretimi (x1000) (Ocak-Şubat)

Commercial Vehicle Production (x1000) (January-February)



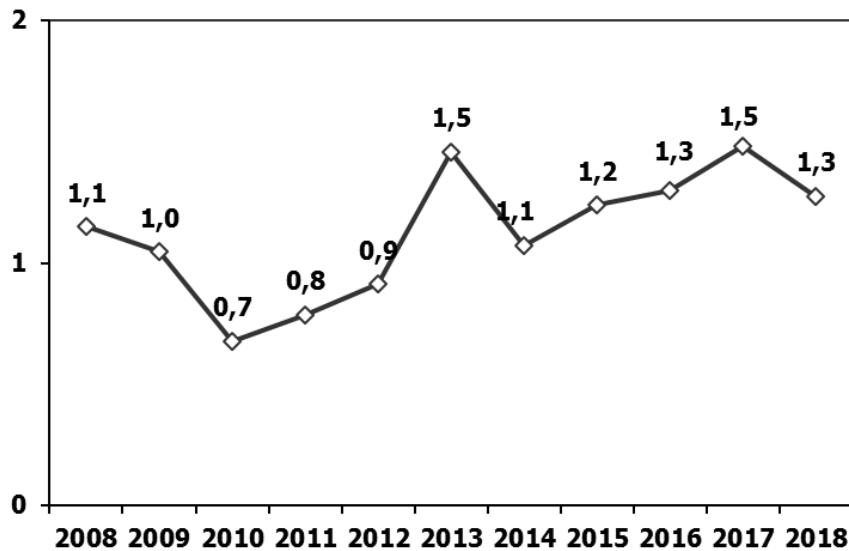
### (AYA >12 Ton) Büyük Kamyon Üretimi (x1000) (Ocak-Şubat)

(GVW >12 Ton) Heavy Truck Production (x1000) (January-February)



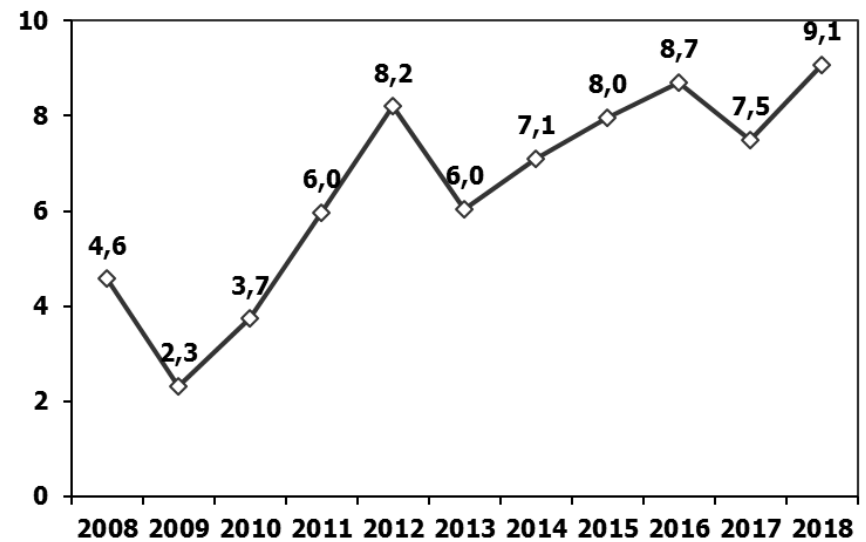
### Otobüs Üretimi (x1000) (Ocak-Şubat)

Bus Production (x1000) (January-February)



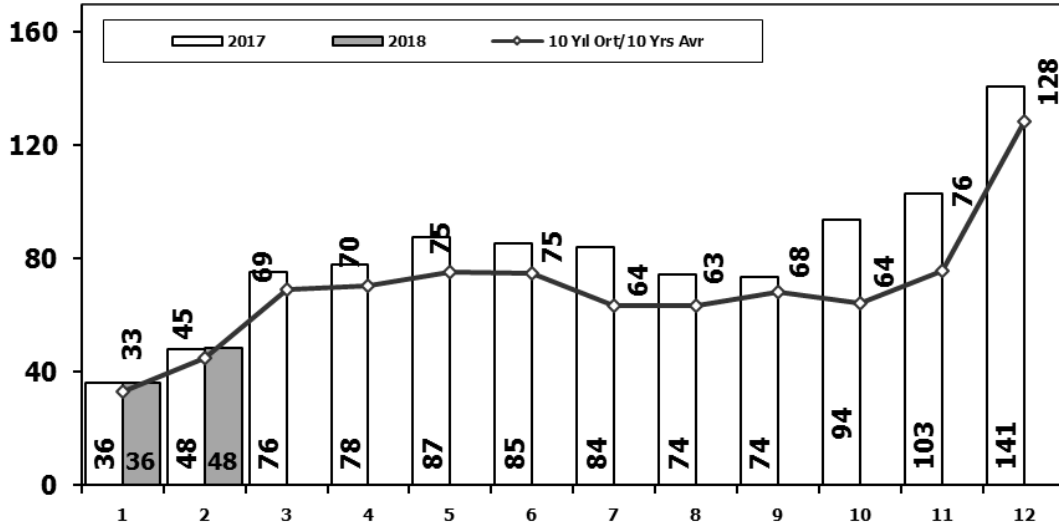
### Traktör Üretimi (x1000) (Ocak-Şubat)

F. Tractor Production (x1000) (January-February)



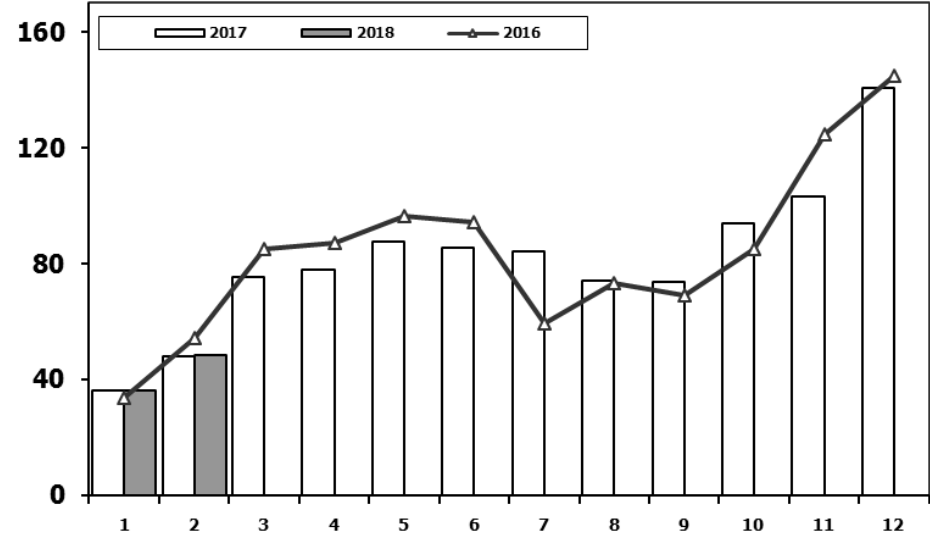
## Toplam Pazarın Analizi (x1000)

Total Market Analysis (x1000)



## Toplam Pazar (x1000)

Total Market (x1000)

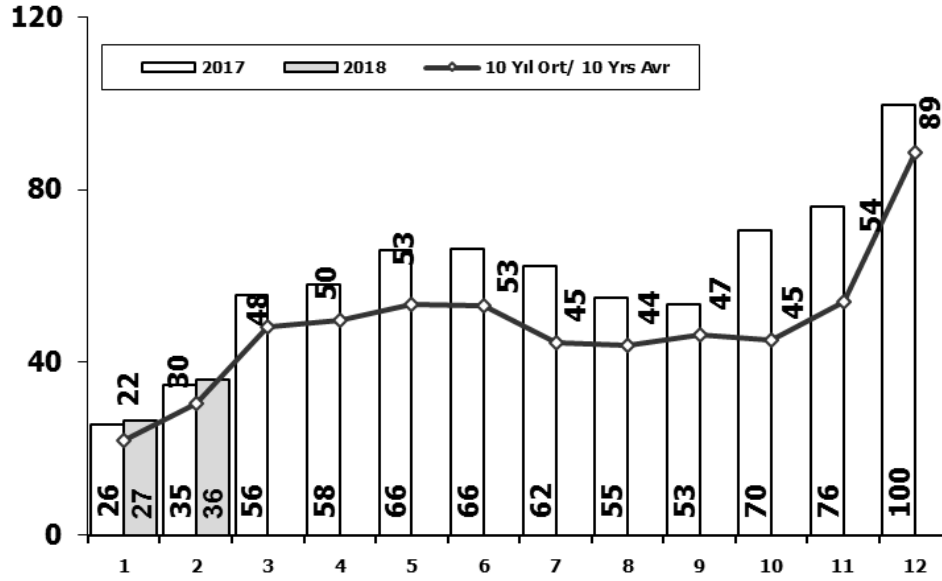


	1	2	3	4	5	6	7	8	9	10	11	12	2 Ay/Mo	Total
<b>2008</b>	33.792	38.121	56.814	50.967	51.627	49.393	44.692	46.592	46.829	35.147	28.152	44.418	71.913	526.544
<b>2009</b>	20.631	22.846	56.531	54.426	64.887	63.102	30.246	37.092	83.403	22.117	29.202	91.386	43.477	575.869
<b>2010</b>	21.050	32.313	53.828	57.079	61.628	63.390	63.718	64.645	66.601	76.780	77.406	154.734	53.363	793.172
<b>2011</b>	47.658	62.348	83.333	82.071	85.093	85.863	65.364	61.378	63.643	72.640	67.195	134.281	110.006	910.867
<b>2012</b>	31.219	43.827	68.957	66.014	74.820	74.781	65.122	60.848	73.197	62.677	75.045	121.113	75.046	817.620
<b>2013</b>	37.140	50.931	72.688	77.015	85.421	77.771	74.726	67.383	71.037	60.399	83.017	135.596	88.071	893.124
<b>2014</b>	34.225	37.308	50.964	56.766	61.909	63.952	62.206	62.839	70.180	69.259	83.937	153.941	71.533	807.486
<b>2015</b>	36.576	58.533	89.121	95.431	85.145	90.463	86.625	84.683	66.622	66.520	88.043	163.432	95.109	1.011.194
<b>2016</b>	33.740	54.223	85.214	87.041	96.576	94.203	59.505	73.269	69.068	85.251	124.839	144.928	87.963	1.007.857
<b>2017</b>	36.146	48.141	75.580	77.848	87.476	85.416	84.189	74.295	73.602	93.806	103.121	140.657	84.287	980.277
<b>2018</b>	36.064	48.392											84.456	84.456

Aylar / Months	10 Yil Ort. 10 Yrs Avr. (x1000)	2018 (x1000)	%
1	33,2	36,1	8,6
2	44,9	48,4	7,9
<b>Total</b>	<b>78,1</b>	<b>84,5</b>	<b>8,2</b>

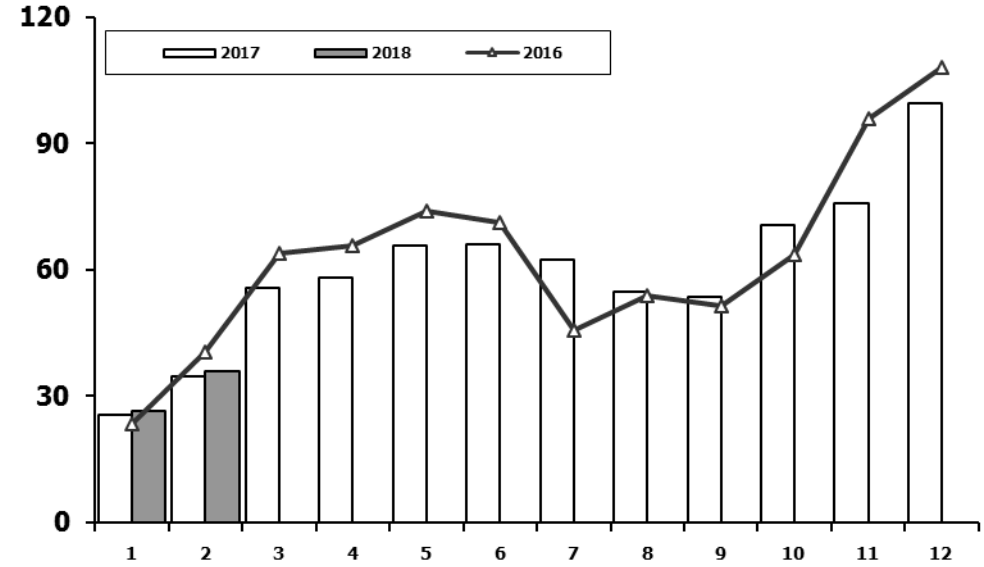
## Otomobil Pazarının Analizi (x1000)

### P.Cars Market Analysis (x1000)



## Otomobil Pazarı (x1000)

### P.Cars Market (x1000)

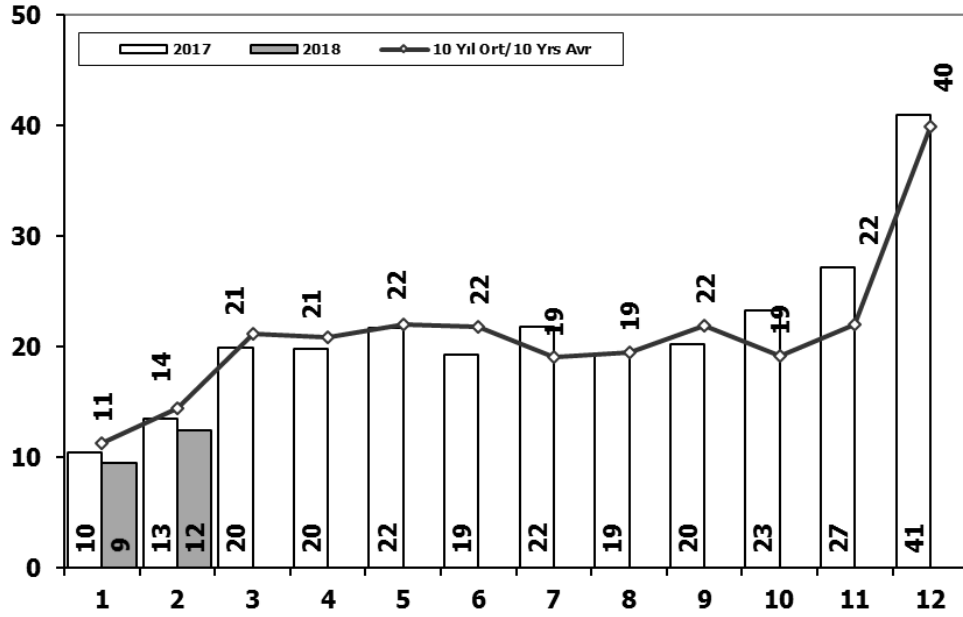


	1	2	3	4	5	6	7	8	9	10	11	12	2 Ay/Mo	Total
2008	18.588	21.196	34.147	30.313	31.477	28.724	25.530	26.102	27.053	19.788	17.201	25.879	39.784	305.998
2009	13.173	14.492	40.622	36.202	44.188	41.019	16.637	22.537	52.162	13.828	17.781	57.178	27.665	369.819
2010	12.594	20.651	33.958	36.549	40.467	42.086	41.399	42.222	42.477	47.859	50.061	99.461	33.245	509.784
2011	29.868	39.004	54.023	53.835	56.302	56.714	43.518	38.875	39.964	47.508	44.951	88.957	68.872	593.519
2012	21.077	29.189	47.270	45.645	50.460	50.849	44.531	41.236	49.360	43.440	52.297	80.926	50.266	556.280
2013	25.835	36.814	51.785	56.999	62.383	58.290	55.712	51.611	52.925	46.985	64.117	101.199	62.649	664.655
2014	24.368	27.167	37.812	42.769	46.379	47.278	46.602	45.131	49.262	50.814	59.695	110.054	51.535	587.331
2015	24.498	40.817	61.676	70.211	62.878	67.766	64.218	61.753	47.088	47.954	62.397	114.340	65.315	725.596
2016	23.358	40.588	63.975	65.618	73.832	71.111	45.566	53.977	51.340	63.746	95.783	108.044	63.946	756.938
2017	25.689	34.658	55.616	57.998	65.799	66.164	62.384	54.890	53.423	70.488	75.956	99.694	60.347	722.759
2018	26.611	35.901											62.512	62.512

Aylar / Months	10 Yil Ort. 10 Yrs Avr. (x1000)	2018 (x1000)	%
1	21,9	26,6	21,5
2	30,5	35,9	17,9
<b>Total</b>	<b>52,4</b>	<b>62,5</b>	<b>19,4</b>

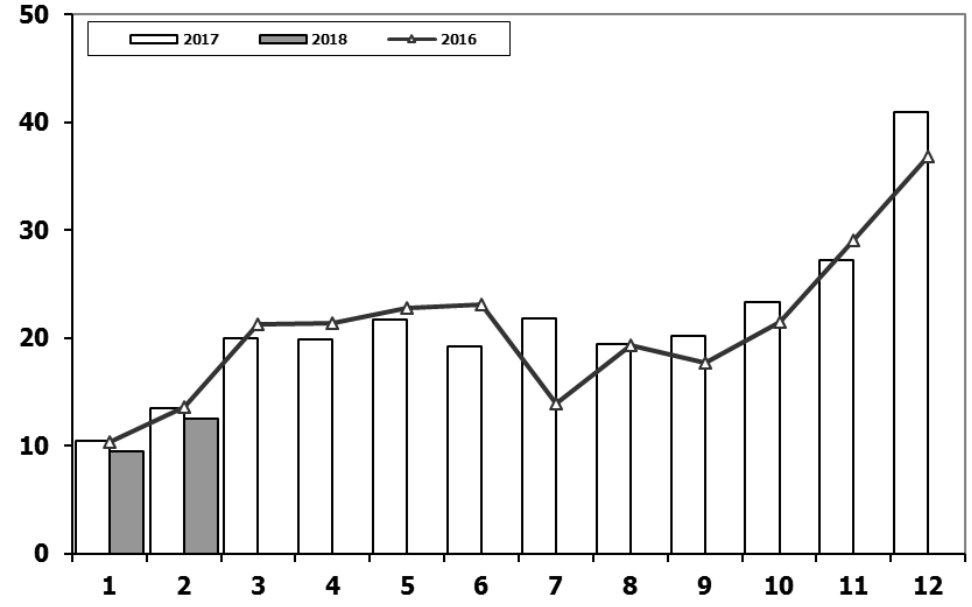
## Ticari Araç Pazarının Analizi (x1000)

### CV Market Analysis (x1000)



## Ticari Araç Pazarı (x1000)

### CV Total Market (x1000)

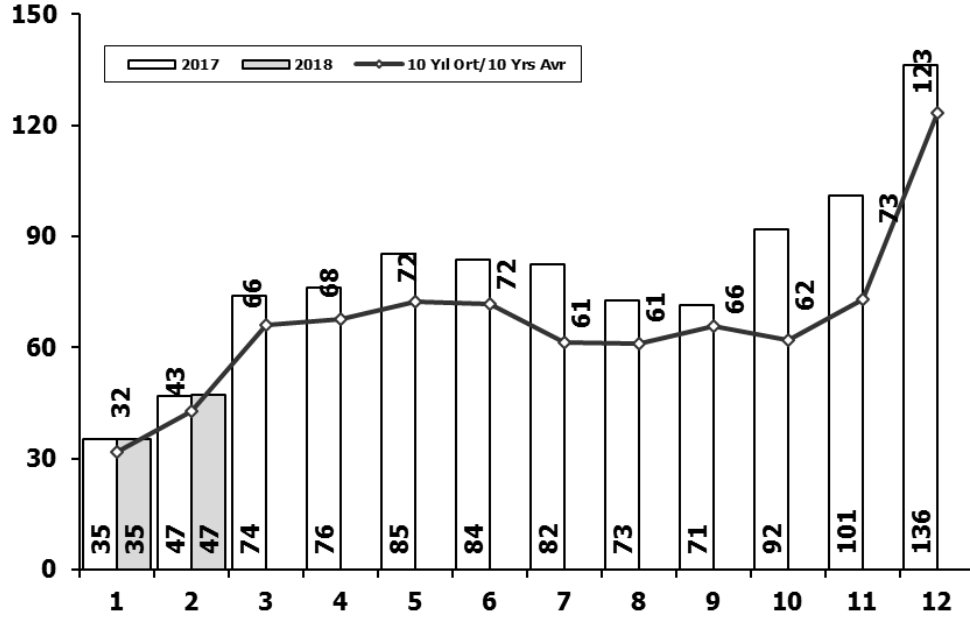


	1	2	3	4	5	6	7	8	9	10	11	12	2 Ay/Mo	Total
<b>2008</b>	15.204	16.925	22.667	20.654	20.150	20.669	19.162	20.490	19.776	15.359	10.951	18.539	32.129	220.546
<b>2009</b>	7.458	8.354	15.909	18.224	20.699	22.083	13.609	14.555	31.241	8.289	11.421	34.208	15.812	206.050
<b>2010</b>	8.456	11.662	19.870	20.530	21.161	21.304	22.319	22.423	24.124	28.921	27.345	55.273	20.118	283.388
<b>2011</b>	17.790	23.344	29.310	28.236	28.791	29.149	21.846	22.503	23.679	25.132	22.244	45.324	41.134	317.348
<b>2012</b>	10.142	14.638	21.687	20.369	24.360	23.932	20.591	19.612	23.837	19.237	22.748	40.187	24.780	261.340
<b>2013</b>	11.305	14.117	20.903	20.016	23.038	19.481	19.014	15.772	18.112	13.414	18.900	34.397	25.422	228.469
<b>2014</b>	9.857	10.141	13.152	13.997	15.530	16.674	15.604	17.708	20.918	18.445	24.242	43.887	19.998	220.155
<b>2015</b>	12.078	17.716	27.445	25.220	22.267	22.697	22.407	22.930	19.534	18.566	25.646	49.092	29.794	285.598
<b>2016</b>	10.382	13.635	21.239	21.423	22.744	23.092	13.939	19.292	17.728	21.505	29.056	36.884	24.017	250.919
<b>2017</b>	10.457	13.483	19.964	19.850	21.677	19.252	21.805	19.405	20.179	23.318	27.165	40.963	23.940	257.518
<b>2018</b>	9.453	12.491											21.944	21.944

Aylar / Months	10 Yil Ort. 10 Yrs Avr. (x1000)	2018 (x1000)	%
1	11,3	9,5	-16,4
2	14,4	12,5	-13,3
<b>Total</b>	<b>25,7</b>	<b>21,9</b>	<b>-14,7</b>

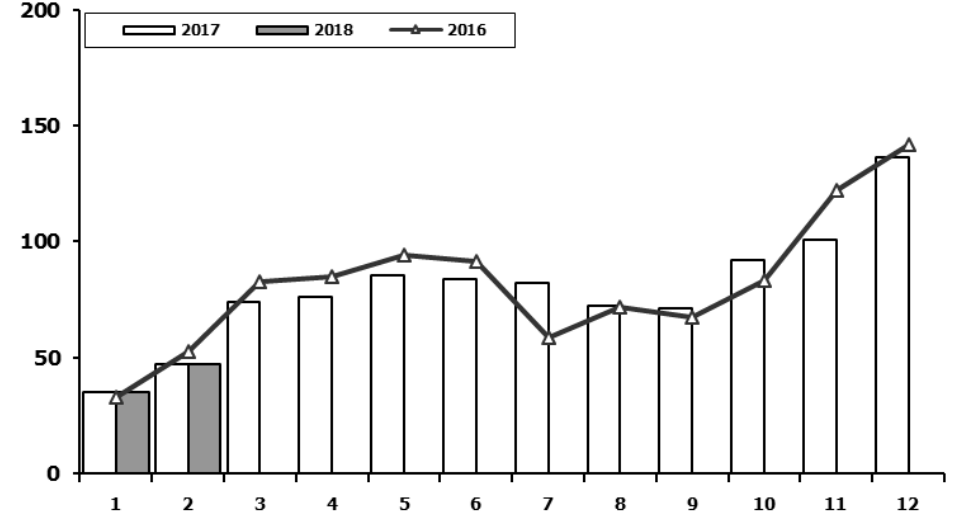
## Hafif Araç Pazarının Analizi (x1000)

### LV Market Analysis (x1000)



## Hafif Araç Pazarı (x1000)

### LV Total Market (x1000)



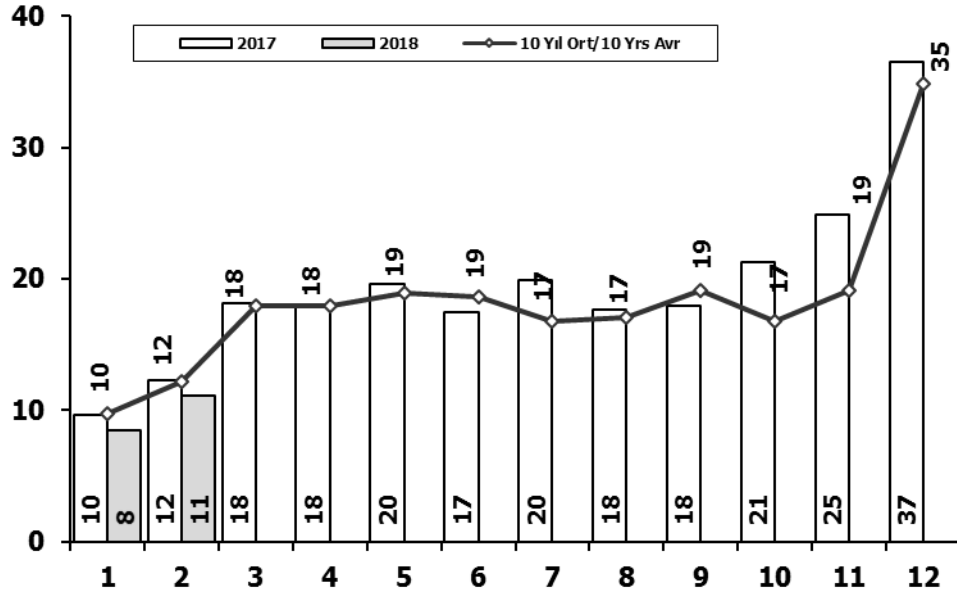
	1	2	3	4	5	6	7	8	9	10	11	12	2 Ay/Mo	Total
2008	31.527	35.251	53.649	47.701	48.598	46.324	42.156	43.670	43.932	32.884	26.253	42.078	66.778	494.023
2009	19.606	21.742	55.111	52.640	63.191	61.067	28.845	35.609	81.397	21.033	27.962	88.923	41.348	557.126
2010	20.095	31.172	51.769	54.946	59.377	60.896	61.345	61.764	63.814	73.404	73.962	148.369	51.267	760.913
2011	44.892	58.663	78.403	77.695	80.646	81.573	63.044	58.406	60.129	69.421	63.657	127.910	103.555	864.439
2012	29.545	41.324	64.884	62.949	70.863	71.067	62.304	58.148	69.629	59.938	71.710	115.400	70.869	777.761
2013	35.523	48.307	68.774	73.575	81.468	74.096	71.596	65.043	67.963	58.014	79.301	129.718	83.830	853.378
2014	32.670	35.021	47.581	53.305	58.121	60.163	59.907	60.199	66.531	66.573	80.621	146.989	67.691	767.681
2015	34.615	55.331	83.302	91.602	81.542	86.158	83.836	82.577	64.025	64.255	84.601	156.173	89.946	968.017
2016	32.713	52.825	82.948	84.887	93.904	91.540	58.533	71.556	67.593	83.000	122.309	141.912	85.538	983.720
2017	35.323	46.965	73.802	75.988	85.422	83.658	82.297	72.536	71.352	91.752	100.859	136.240	82.288	956.194
2018	35.076	47.009											82.085	82.085

Aylar/ Months	10 Yıl Ort. 10 Yrs Avr. (x1000)	2018 (x1000)	%
1	31,7	35,1	10,8
2	42,7	47,0	10,2
<b>Total</b>	<b>74,3</b>	<b>82,1</b>	<b>10,5</b>



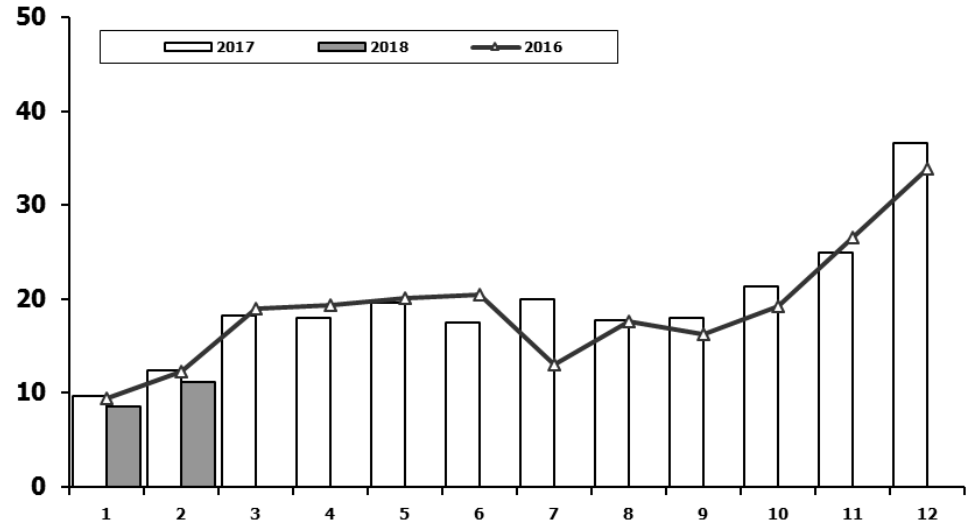
## Hafif Ticari Araç Pazarının Analizi (x1000)

### LCV Market Analysis (x1000)



## Hafif Ticari Araç Pazarı (x1000)

### LCV Total Market (x1000)

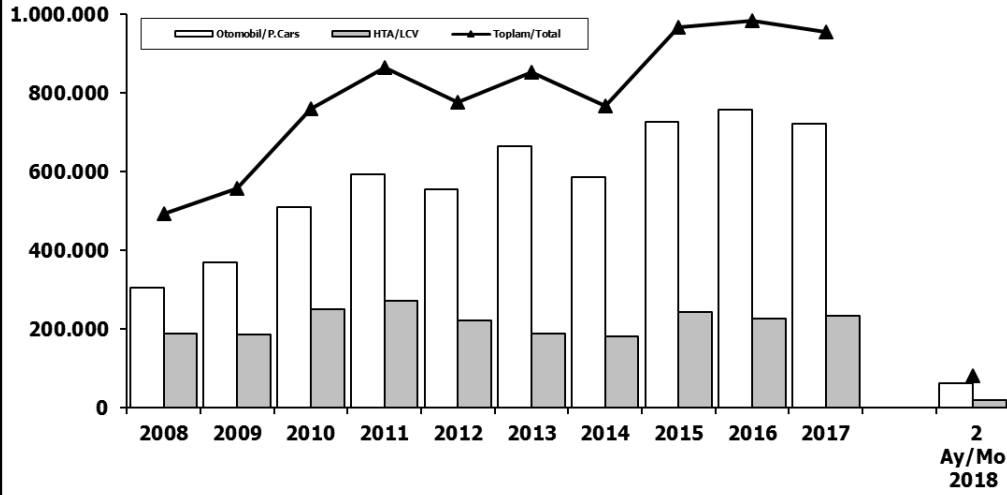


	1	2	3	4	5	6	7	8	9	10	11	12	2 Ay/Mo	Total
2008	12.939	14.055	19.502	17.388	17.121	17.600	16.626	17.568	16.879	13.096	9.052	16.199	26.994	188.025
2009	6.433	7.250	14.489	16.438	19.003	20.048	12.208	13.072	29.235	7.205	10.181	31.745	13.683	187.307
2010	7.501	10.521	17.811	18.397	18.910	18.810	19.946	19.542	21.337	25.545	23.901	48.908	18.022	251.129
2011	15.024	19.659	24.380	23.860	24.344	24.859	19.526	19.531	20.165	21.913	18.706	38.953	34.683	270.920
2012	8.468	12.135	17.614	17.304	20.403	20.218	17.773	16.912	20.269	16.498	19.413	34.474	20.603	221.481
2013	9.688	11.493	16.989	16.576	19.085	15.806	15.884	13.432	15.038	11.029	15.184	28.519	21.181	188.723
2014	8.302	7.854	9.769	10.536	11.742	12.885	13.305	15.068	17.269	15.759	20.926	36.935	16.156	180.350
2015	10.117	14.514	21.626	21.391	18.664	18.392	19.618	20.824	16.937	16.301	22.204	41.833	24.631	242.421
2016	9.355	12.237	18.973	19.269	20.072	20.429	12.967	17.579	16.253	19.254	26.526	33.868	21.592	226.782
2017	9.634	12.307	18.186	17.990	19.623	17.494	19.913	17.646	17.929	21.264	24.903	36.546	21.941	233.435
2018	8.465	11.108											19.573	19.573

Aylar / Months	10 Yil Ort. 10 Yrs Avr. (x1000)	2018 (x1000)	%
1	9,7	8,5	-13,1
2	12,2	11,1	-9,0
<b>Total</b>	<b>21,9</b>	<b>19,6</b>	<b>-10,8</b>

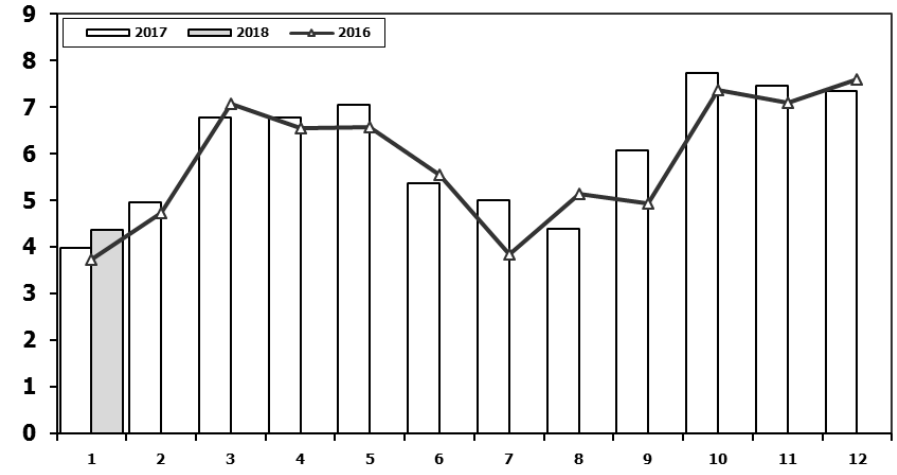
## Hafif Araç Pazarı (AYA < 3.5 Ton)

Light Vehicle Market (GVW < 3.5 Ton)



## Traktör Pazarı (x1000)

F.Tractor Market (x1000)



	2008	2009	2010	2011	2012	2013	2014	2015	2016	2017	2 Ay/Mo 2018
<b>Otomobil/P.Cars</b>	305.998	369.819	509.784	593.519	556.280	664.655	587.331	725.596	756.938	722.759	62.512
<b>HTA/LCV</b>	188.025	187.307	251.129	270.920	221.481	188.723	180.350	242.421	226.782	233.435	19.573
<b>Toplam/Total</b>	494.023	557.126	760.913	864.439	777.761	853.378	767.681	968.017	983.720	956.194	82.085
<b>HTA/LCV (%)</b>	38	34	33	31	28	22	23	25	23	24	24

	1	2	3	4	5	6	7	8	9	10	11	12	1 Ay/Mo	Total
<b>2008</b>	2.770	1.855	3.395	3.081	2.769	2.400	2.232	2.485	1.856	1.773	1.305	1.101	2.770	27.022
<b>2009</b>	717	572	688	1.070	1.297	1.256	1.054	1.183	1.117	1.356	1.304	2.144	717	13.758
<b>2010</b>	1.111	1.991	2.330	3.039	2.567	2.638	1.965	3.019	2.806	4.424	3.978	6.168	1.111	36.036
<b>2011</b>	2.975	5.242	5.927	5.358	6.016	6.335	4.534	4.051	4.140	5.828	4.943	4.992	2.975	60.341
<b>2012</b>	2.362	1.983	4.348	6.579	6.273	4.569	3.837	3.158	3.618	4.027	4.807	4.757	2.362	50.318
<b>2013</b>	2.161	2.432	4.005	4.585	5.616	3.136	4.574	3.408	4.935	4.762	5.781	6.891	2.161	52.286
<b>2014</b>	2.169	3.512	4.476	4.905	5.094	5.028	4.233	4.920	5.619	5.743	6.250	7.409	2.169	59.358
<b>2015</b>	3.124	3.984	5.460	6.383	6.078	5.748	4.677	5.044	4.765	7.049	6.898	7.564	3.124	66.774
<b>2016</b>	3.739	4.731	7.067	6.546	6.575	5.543	3.833	5.134	4.945	7.372	7.090	7.603	3.739	70.178
<b>2017</b>	3.974	4.964	6.773	6.780	7.057	5.356	5.003	4.396	6.064	7.734	7.457	7.351	3.974	72.909
<b>2018</b>	4.362												4.362	4.362

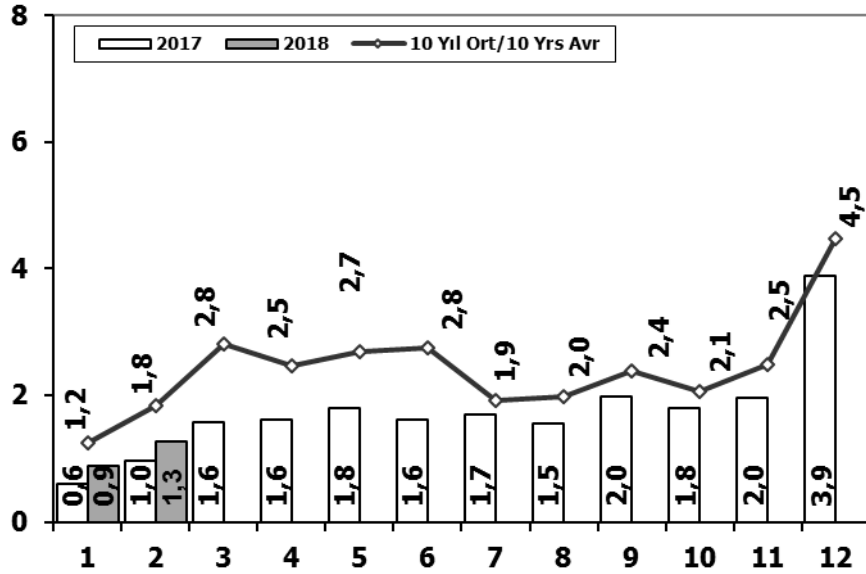
Kaynak: TÜİK trafik kayıtları.

Rakamlar, son iki model yılına ait traktör tescillerinden oluşmaktadır.

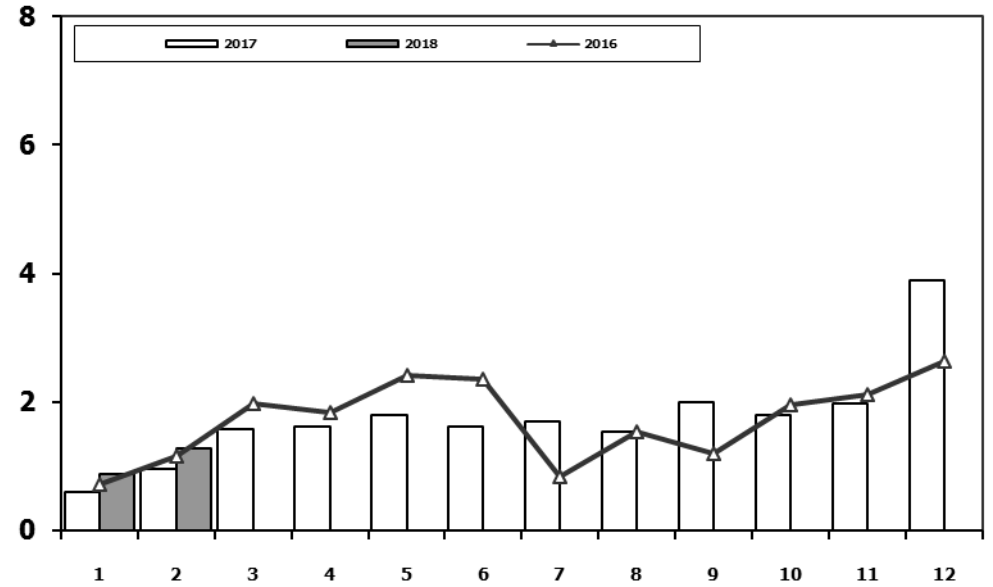
Source: Turkish Statistical Institute – Traffic registrations

Data represents the last two model year's farm tractors registration figures

## Kamyon Pazarının Analizi (x1000) AYA > 5 Ton Truck Market Analysis (x1000) GVW > 5 Ton



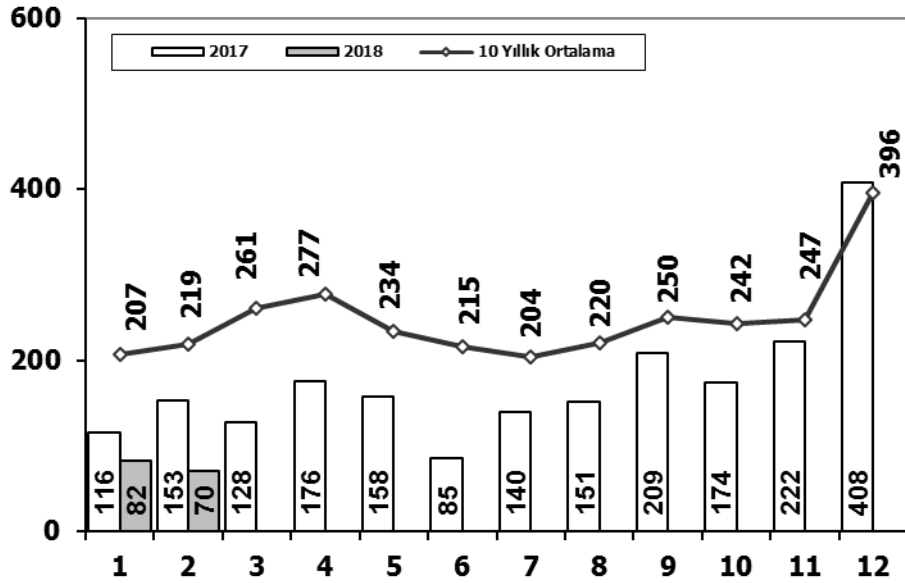
## Kamyon Pazarı (x1000) AYA > 5 Ton Truck Market (x1000) GVW > 5 Ton



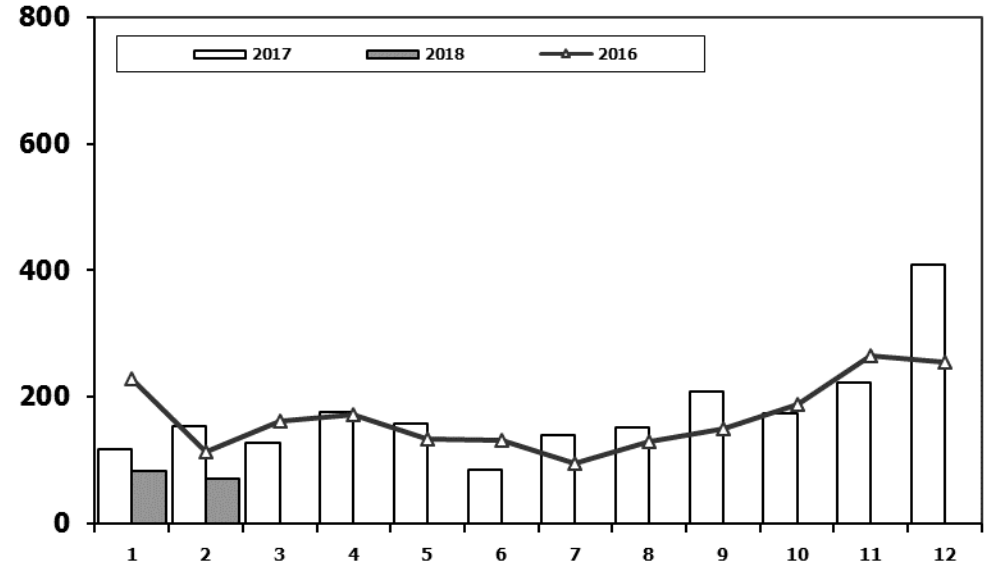
	1	2	3	4	5	6	7	8	9	10	11	12	2 Ay/Mo	Total
<b>2008</b>	1.797	2.309	2.621	2.578	2.459	2.526	2.067	2.377	2.390	1.790	1.512	1.834	4.106	26.260
<b>2009</b>	771	759	1.034	1.342	1.355	1.651	1.156	1.205	1.780	866	981	2.015	1.530	14.915
<b>2010</b>	777	968	1.772	1.807	1.966	2.205	2.093	2.446	2.444	3.071	3.136	5.677	1.745	28.362
<b>2011</b>	2.552	3.292	4.418	3.754	3.803	3.749	1.996	2.478	3.081	2.774	3.108	5.787	5.844	40.792
<b>2012</b>	1.375	2.159	3.595	2.697	3.321	3.250	2.450	2.277	2.991	2.244	3.006	5.000	3.534	34.365
<b>2013</b>	1.077	1.931	3.127	2.720	3.145	2.951	2.411	1.845	2.554	1.801	3.173	5.025	3.008	31.760
<b>2014</b>	1.117	1.949	2.818	3.092	3.405	3.438	2.083	2.390	3.281	2.494	3.028	6.313	3.066	35.408
<b>2015</b>	1.705	2.841	5.270	3.208	3.190	3.824	2.463	1.798	2.244	1.848	2.902	6.540	4.546	37.833
<b>2016</b>	718	1.154	1.984	1.835	2.420	2.358	830	1.529	1.204	1.962	2.123	2.640	1.872	20.757
<b>2017</b>	607	964	1.569	1.610	1.807	1.621	1.689	1.546	1.990	1.800	1.970	3.894	1.571	21.067
<b>2018</b>	880	1.269											2.149	2.149

Aylar / Months	10 Yil Ort. 10 Yrs Avr. (x1000)	2018 (x1000)	%
1	1,2	0,9	-29,6
2	1,8	1,3	-30,8
<b>Total</b>	<b>3,6</b>	<b>2,1</b>	<b>-40,3</b>

## Midibüs Pazarının Analizi (7-9 mt / 25-35 Kişilik) Midibus Market Analysis (7-9 mt / 25-35 Passengers)



## Midibüs Pazarı (7-9 mt / 25-35 Kişilik Midibüs) Midibus Market (7-9 mt / 25-35 Passengers)

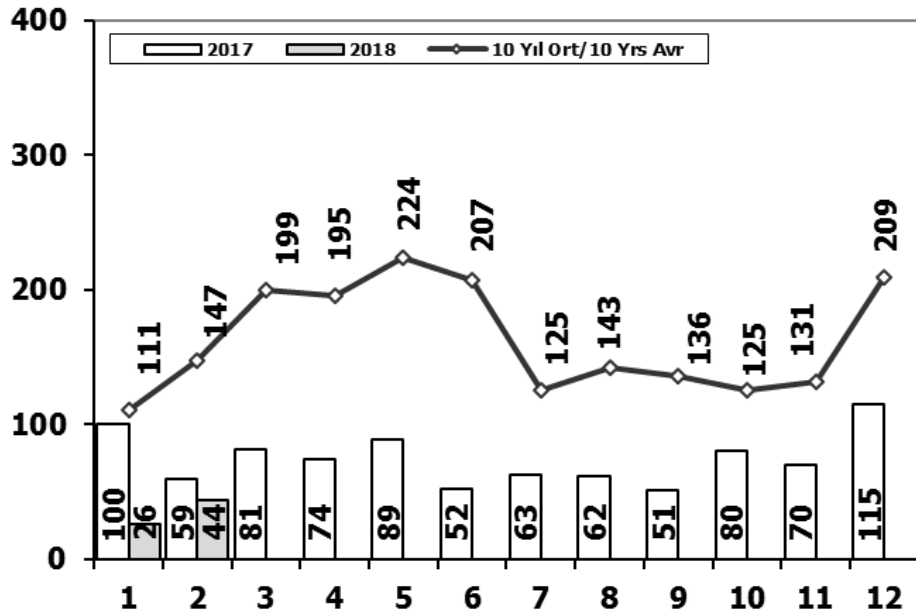


	1	2	3	4	5	6	7	8	9	10	11	12	2 Ay/Mo	Total
2008	391	476	436	512	419	331	368	380	341	352	246	270	867	4.522
2009	154	124	160	220	174	198	160	175	168	143	206	323	278	2.205
2010	155	131	185	167	140	138	129	246	236	206	202	437	286	2.372
2011	138	195	294	316	280	258	211	305	301	276	260	270	333	3.104
2012	179	257	277	229	257	239	216	249	325	269	189	398	436	3.084
2013	191	268	289	276	283	241	367	235	305	392	415	697	459	3.959
2014	335	265	326	280	206	223	161	174	229	140	226	454	600	3.019
2015	177	213	350	425	288	306	195	154	231	283	240	450	390	3.312
2016	229	112	161	172	133	132	95	130	150	187	264	254	341	2.019
2017	116	153	128	176	158	85	140	151	209	174	222	408	269	2.120
2018	82	70											152	152

Aylar / Months	10 Yıl Ort. 10 Yrs Avr.	2018	%
1	207	82	-60
2	219	70	-68
<b>Total</b>	<b>426</b>	<b>152</b>	<b>-64</b>

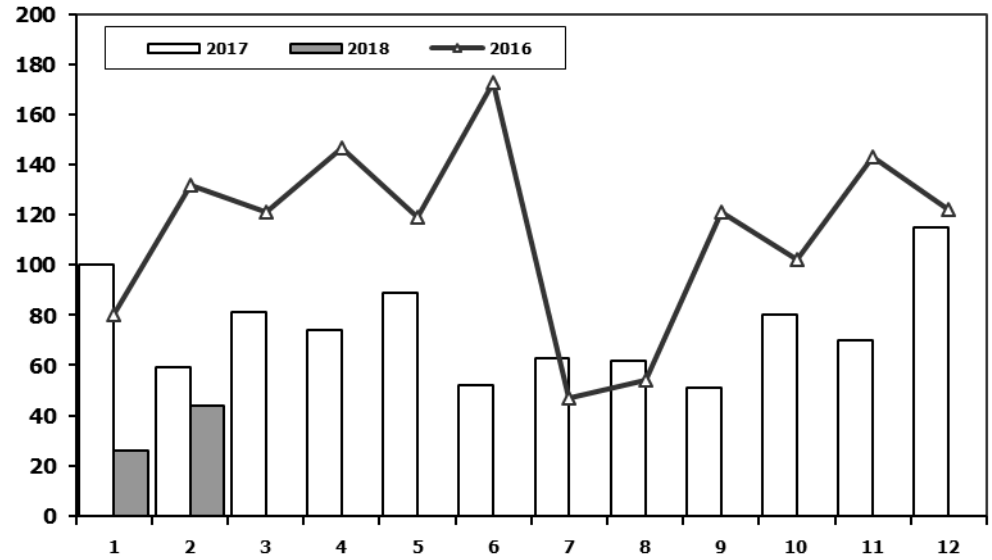
## Otobüs Pazarının Analizi

Bus Market Analysis



## Otobüs Pazarı

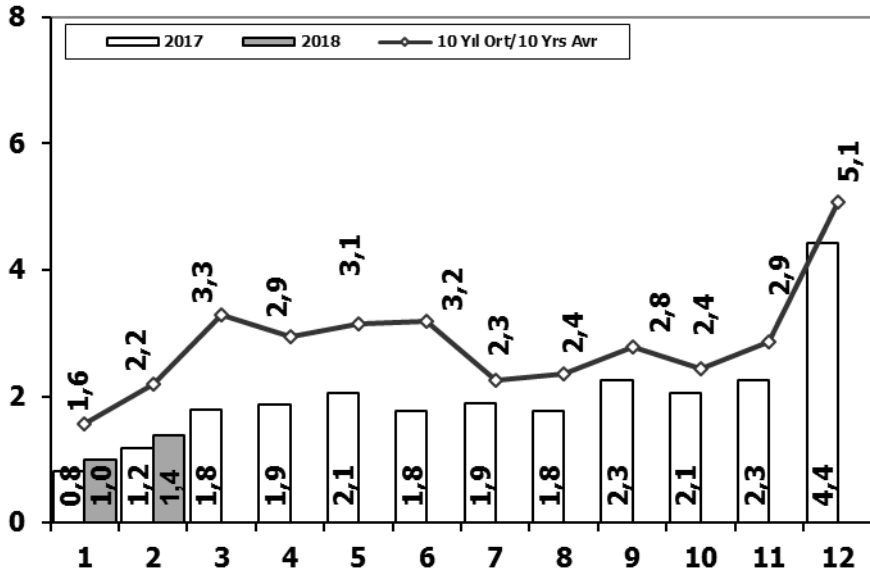
Bus Market



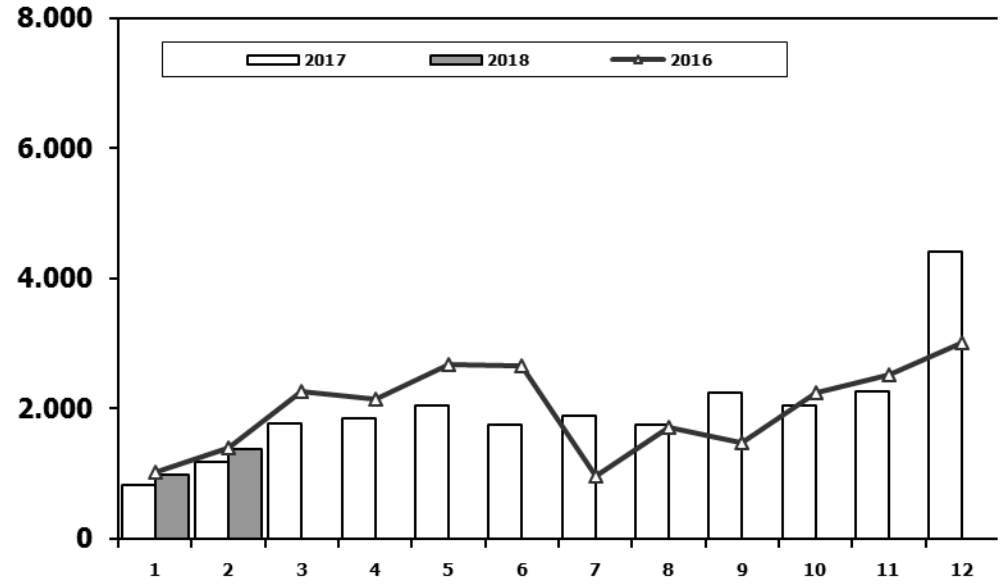
	1	2	3	4	5	6	7	8	9	10	11	12	2 Ay/Mo	Total
<b>2008</b>	77	85	108	176	151	212	101	165	166	121	141	236	162	1.739
<b>2009</b>	100	221	226	224	167	186	85	103	58	75	53	125	321	1.623
<b>2010</b>	23	42	102	159	145	151	151	189	107	99	106	251	65	1.525
<b>2011</b>	76	198	218	306	364	283	113	189	132	169	170	314	274	2.532
<b>2012</b>	120	87	201	139	379	225	152	174	252	226	140	315	207	2.410
<b>2013</b>	349	425	498	444	525	483	352	260	215	192	128	156	774	4.027
<b>2014</b>	103	73	239	89	177	128	55	76	139	52	62	185	176	1.378
<b>2015</b>	79	148	199	196	125	175	131	154	122	134	300	269	227	2.032
<b>2016</b>	80	132	121	147	119	173	47	54	121	102	143	122	212	1.361
<b>2017</b>	100	59	81	74	89	52	63	62	51	80	70	115	159	896
<b>2018</b>	26	44											70	70

Aylar / Months	10 Yıl Ort. 10 Yrs Avr.	2018	%
1	111	26	-77
2	147	44	-70
<b>Total</b>	<b>258</b>	<b>70</b>	<b>-73</b>

## Ağır Ticari Araç Pazarının Analizi (x1000) HCV Market Analysis (x1000)



## Ağır Ticari Araç Pazarı (x1000) HCV Market (x1000)

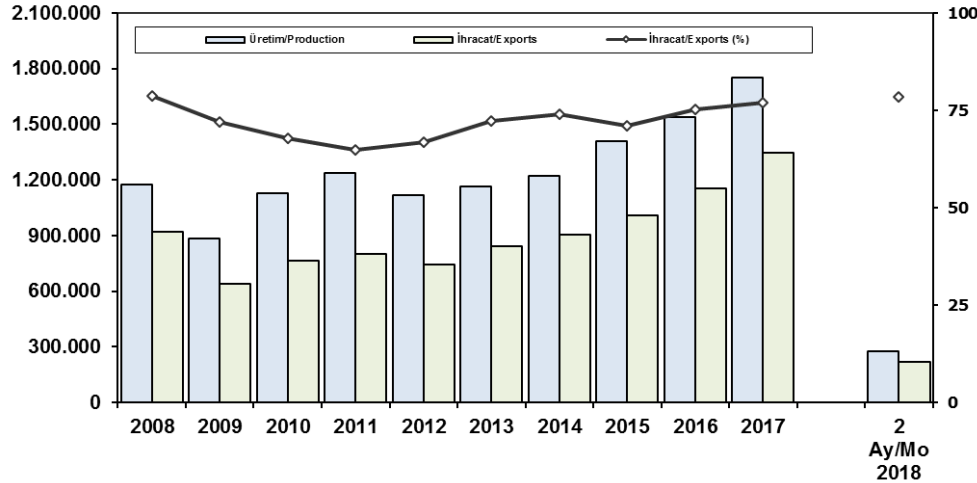


	1	2	3	4	5	6	7	8	9	10	11	12	2 Ay/Mo	Total
<b>2008</b>	2.265	2.870	3.165	3.266	3.029	3.069	2.536	2.922	2.897	2.263	1.899	2.340	5.135	32.521
<b>2009</b>	1.025	1.104	1.420	1.786	1.696	2.035	1.401	1.483	2.006	1.084	1.240	2.463	2.129	18.743
<b>2010</b>	955	1.141	2.059	2.133	2.251	2.494	2.373	2.881	2.787	3.376	3.444	6.365	2.096	32.259
<b>2011</b>	2.766	3.685	4.930	4.376	4.447	4.290	2.320	2.972	3.514	3.219	3.538	6.371	6.451	46.428
<b>2012</b>	1.674	2.503	4.073	3.065	3.957	3.714	2.818	2.700	3.568	2.739	3.335	5.713	4.177	39.859
<b>2013</b>	1.617	2.624	3.914	3.440	3.953	3.675	3.130	2.340	3.074	2.385	3.716	5.878	4.241	39.746
<b>2014</b>	1.555	2.287	3.383	3.461	3.788	3.789	2.299	2.640	3.649	2.686	3.316	6.952	3.842	39.805
<b>2015</b>	1.961	3.202	5.819	3.829	3.603	4.305	2.789	2.106	2.597	2.265	3.442	7.259	5.163	43.177
<b>2016</b>	1.027	1.398	2.266	2.154	2.672	2.663	972	1.713	1.475	2.251	2.530	3.016	2.425	24.137
<b>2017</b>	823	1.176	1.778	1.860	2.054	1.758	1.892	1.759	2.250	2.054	2.262	4.417	1.999	24.083
<b>2018</b>	988	1.383											2.371	2.371

Aylar / Months	10 Yil Ort. 10 Yrs Avr. (x1000)	2018 (x1000)	%
1	1,6	1,0	-36,9
2	2,2	1,4	-37,1
<b>Total</b>	<b>3,8</b>	<b>2,4</b>	<b>-37,0</b>

## İhracat/Üretim (2008-2018) (Traktör dahil)

Exports/Production (2008-2018) (Including F.Tractor)



## Taşıt Araçları İhracatı (2016-2018)

Motor Vehicle Exports (2016-2018)

SEKTÖR/SECTOR	2016	2017	2017	2018	2018/2017 (%)
			2 Ay - Mo		
OTOMOBİL / P.Cars	745.709	921.354	158.482	147.364	-7
TİCARİ ARAÇLAR / CV	395.673	411.440	60.951	66.573	9
* Kamyonet/Pick-Up	347.949	350.108	53.049	57.686	9
* Minibüs/Minibus	34.790	45.794	6.265	6.170	-2
* Kamyon/Truck	5.521	7.800	563	1.635	190
* Midibüs/Midibus	915	710	77	63	-18
* Otobüs/Bus	6.498	7.028	997	1.019	2
<b>TAŞIT ARAÇLARI /MV TOTAL</b>	<b>1.141.382</b>	<b>1.332.794</b>	<b>219.433</b>	<b>213.937</b>	<b>-3</b>
<b>TRAKTÖR/F.TRACTOR</b>	<b>13.651</b>	<b>13.123</b>	<b>1.874</b>	<b>1.743</b>	<b>-7</b>
<b>TOTAL</b>	<b>1.155.033</b>	<b>1.345.917</b>	<b>221.307</b>	<b>215.680</b>	<b>-3</b>

	2008	2009	2010	2011	2012	2013	2014	2015	2016	2017	2 Ay/Mo 2018
Üretim/Production	1.171.917	884.466	1.124.982	1.234.637	1.115.233	1.166.043	1.218.848	1.410.034	1.536.673	1.749.572	274.791
İhracat/Exports	920.763	637.855	763.670	801.112	745.354	843.467	902.194	1.007.267	1.155.033	1.345.917	215.680
İhracat/Exports (%)	79	72	68	65	67	72	74	71	75	77	78

## Otomotiv Ana ve Yan Sanayii İhracatı (ABD \$)

CBU and CKD Exports - \$

Sektör / Sector	2014	2015	2016	2017	2017	2018	2018/2017 (%)
					Ocak-Şubat / January-February		
<b>Yan Sanayi İhracatı/Total Component Exports</b>	<b>9.504.013.791</b>	<b>8.641.977.425</b>	<b>8.946.472.202</b>	<b>9.838.541.337</b>	<b>1.471.019.145</b>	<b>1.853.133.591</b>	<b>26%</b>
İç ve Dış Lastik / Tyres	1.126.709.610,14	960.550.807	978.124.241	1.131.881.119	161.358.337	225.029.801	39%
Emniyet Camı / Safety Glasses	143.208.298,99	124.564.841	119.553.098	136.486.808	20.068.181	26.135.240	30%
Motor (Engine)	171.893.752,32	221.897.271	370.418.066	486.426.738	72.779.726	115.085.974	58%
Akümülatör / Batteries	289.101.198,21	220.462.827	224.588.995	296.139.813	32.842.213	45.910.752	40%
Diğer Aksam ve Parça / Spare Parts&Components	7.773.100.931,83	7.114.501.679	7.253.787.802	7.787.606.860	1.183.970.689	1.440.971.824	22%
<b>Ana Sanayi İhracatı/Total Vehicle Exports</b>	<b>13.259.499.977</b>	<b>12.977.346.859</b>	<b>15.302.656.887</b>	<b>19.147.991.646</b>	<b>2.865.299.320</b>	<b>3.327.276.031</b>	<b>16%</b>
Otobüs / Bus	985.983.007,01	1.023.556.746	1.190.475.986	1.311.098.736	171.807.445	201.874.009	18%
Midibüs-Minibüs / Minibus- Minibus	97.685.509,12	130.195.838	238.911.957	217.704.499	33.995.354	35.742.482	5%
Otomobil (P. Cars)	7.258.361.005,24	6.881.867.274	8.336.928.418	11.790.776.093	1.843.467.107	2.018.701.228	10%
Kamyon-Kamyonet/HCV-LCV	4.201.760.813,55	4.264.018.829	4.617.147.751	4.849.465.868	703.982.774	857.921.098	22%
Römork ve Yarı Römork/Trailer-Semi Trailer	252.354.014,20	252.397.167	265.338.366	230.168.223	40.250.826	65.938.041	64%
Çekici/Truck-Tractor	38.396.524,81	48.108.959	316.355.575	427.967.083	29.776.388	108.049.493	263%
Tarım Traktörü/Farm Tractor	424.959.103,39	377.202.046	337.498.834	320.811.145	42.019.426	39.049.680	-7%
<b>Toplam/Total</b>	<b>22.763.513.769</b>	<b>21.619.324.284</b>	<b>24.249.129.088</b>	<b>28.986.532.983</b>	<b>4.336.318.466</b>	<b>5.180.409.622</b>	<b>19%</b>

Kaynak: Uludağ İhracatçı Birlikleri . ÜİB tarafından OSD için özel olarak analiz edilen Otomotiv İhracatı kapsamında; ÜİB Türkiye Genel Otomotiv Endüstrisi sınıflandırmasına kıyasla "Römork ve Yarı Römork", "Tarım Traktörü" verileri dahil edilmekte; "Kullanılmış Araçlar", "İki Tekerlekli Taşıtlar", "Demiryolu Taşıtları" hariç tutulmaktadır.

Source: Uludağ Exporters Association - Special Analyze for OSD

Compared to Turkish General Automotive Industry classification, this special analyze includes; farms tractors, trailers and semi-trailers, does not include; used vehicles, two-wheeled vehicles and railway vehicles.

## Sektör Bazında İhracat (1000 \$)

Exports on Sectorial Basis

SEKTÖRLER (1.000 \$)	ŞUBAT				OCAK-ŞUBAT				SON 12 AYLIK			
	2017	2018	Değişim ('18/'17)	Pay(18)	2017	2018	Değişim ('18/'17)	Pay(18)	2017	2018	Değişim ('18/'17)	Pay(18)
Otomotiv Endüstrisi	2.227.175	2.799.571	25,7	21,7	4.291.360	5.085.611	18,5	20,1	24.683.255	29.323.839	18,8	18,4
Hazırgiyim ve Konfeksiyon	1.282.318	1.409.514	9,9	10,9	2.528.006	2.839.826	12,3	11,2	16.748.812	17.347.390	3,6	10,9
Kimyevi Maddeler ve Mamulleri	1.343.337	1.268.111	-5,6	9,8	2.573.892	2.620.310	1,8	10,3	14.375.644	16.083.974	11,9	10,1
Çelik	928.853	1.149.925	23,8	8,9	1.779.484	2.269.708	27,5	9,0	9.480.890	11.945.594	26,0	7,5
Elektrik Elektronik ve Hizmet	695.486	882.569	26,9	6,8	1.298.814	1.651.332	27,1	6,5	9.843.837	10.846.217	10,2	6,8
Tekstil ve Hammaddeleri	636.040	699.575	10,0	5,4	1.249.378	1.395.799	11,7	5,5	7.886.914	8.246.391	4,6	5,2
Demir ve Demir Dışı Metaller	500.584	636.748	27,2	4,9	965.527	1.234.349	27,8	4,9	5.985.028	7.079.462	18,3	4,5
Hububat, Bakliyat, Yağlı Tohumlar ve Mamulleri	556.351	535.683	-3,7	4,2	1.079.652	1.083.517	0,4	4,3	6.415.661	6.373.845	-0,7	4,0
Makine ve Aksamları	432.575	548.124	26,7	4,3	821.367	1.060.799	29,2	4,2	5.305.805	6.322.526	19,2	4,0
Mobilya, Kağıt ve Orman Ürünleri	330.042	398.235	20,7	3,1	641.614	769.696	20,0	3,0	4.125.119	4.573.197	10,9	2,9
<b>TOPLAM</b>	<b>11.226.719</b>	<b>12.889.416</b>	<b>14,8</b>	<b>100,0</b>	<b>22.475.194</b>	<b>25.346.255</b>	<b>12,8</b>	<b>100,0</b>	<b>143.092.274</b>	<b>159.027.108</b>	<b>11,1</b>	<b>100,0</b>

Kaynak: TİM

Şubat ayı ihracat verilerine, "İhracatçı Birlikleri Kaydından Muaf İhracat" verisi dahil değildir.

Source: TİM

Exportation data for February does not include "Exempted Exports from the Exporters' Union Registration".

## Firma Bazında İhracat (Adet)

Export Of Member Companies (Unit)

### First 3 Sectors:

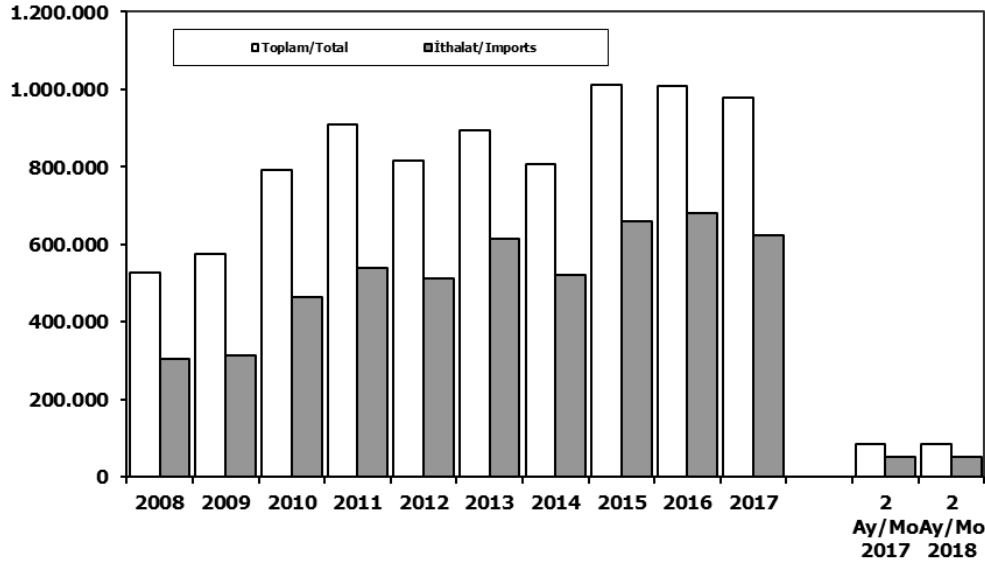
- 1- Automotive Industry
- 2- Apparel and Clothing
- 3- Chemical Articles and Products

FİRMALAR Companies	2015	2016	2017	Ocak-Şubat January-February	
				2017	2018
FORD OTOSAN	252.571	256.706	296.840	45.982	51.914
OYAK RENAULT	270.299	270.088	287.915	47.894	45.696
TOFAŞ	173.743	279.444	270.698	49.581	41.787
TOYOTA	81.962	109.184	246.466	41.401	39.548
HYUNDAI ASSAN	201.276	207.234	204.382	32.224	28.370
HONDA TÜRKİYE	2.220	2.914	9.391	686	3.551
M. BENZ TÜRK	4.252	8.307	9.865	1.040	1.924
TÜRK TRAKTÖR	14.122	12.625	12.023	1.775	1.718
KARSAN	3.067	3.629	2.969	119	522
MAN TÜRKİYE	1.493	1.717	2.007	328	498
OTOKAR	720	833	691	82	63
A.I.O.S.	291	673	700	62	43
HATTAT TRAKTÖR	810	1.026	1.100	99	25
TEMSA	441	653	870	34	21
<b>GENEL TOPLAM</b>	<b>1.007.267</b>	<b>1.155.033</b>	<b>1.345.917</b>	<b>221.307</b>	<b>215.680</b>

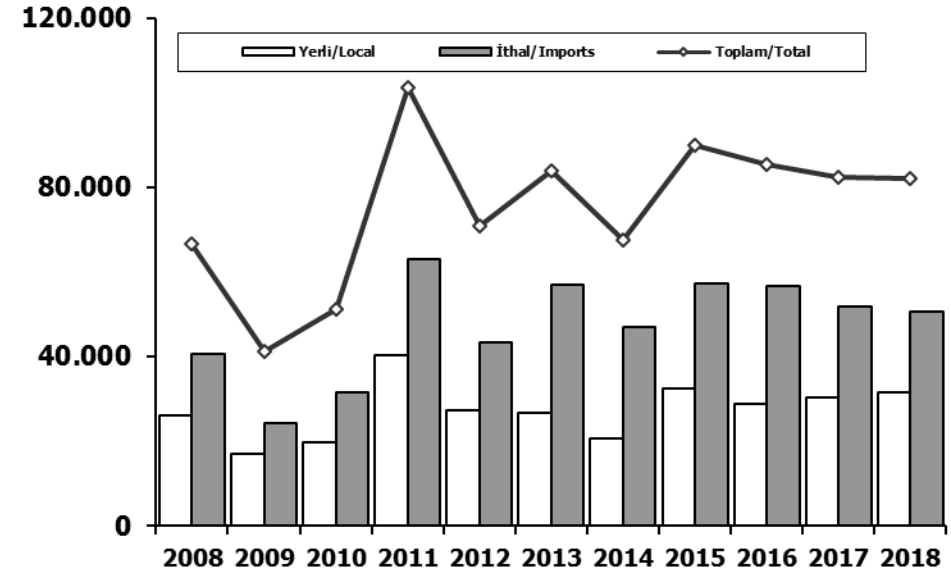
Kaynak: OSD



## Toplam Pazar (Otomobil+T.Araç) Total Market (P.Cars+C.V)



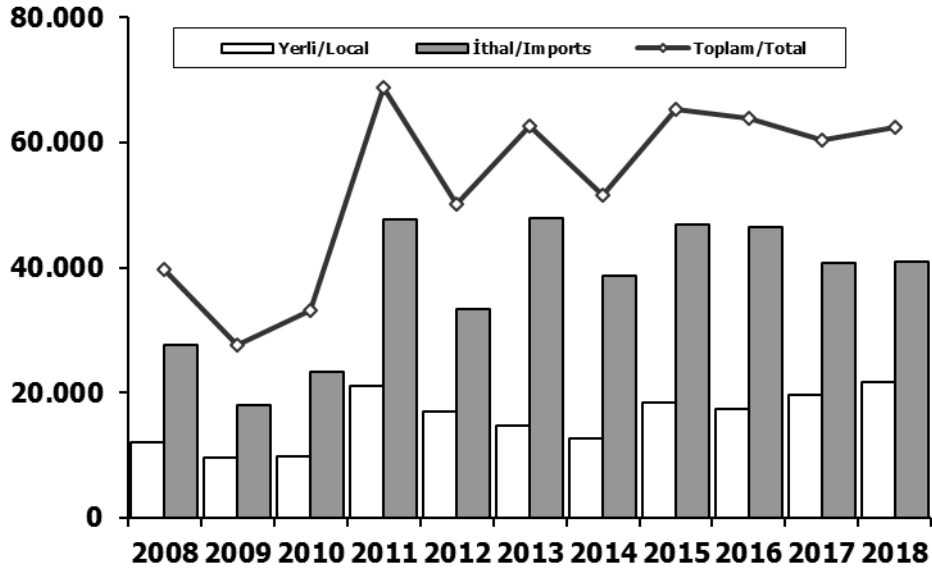
## Hafif Araçlar Pazarı (2008-2018 Ocak-Şubat) Light Vehicle Market (2008-2018 January-February)



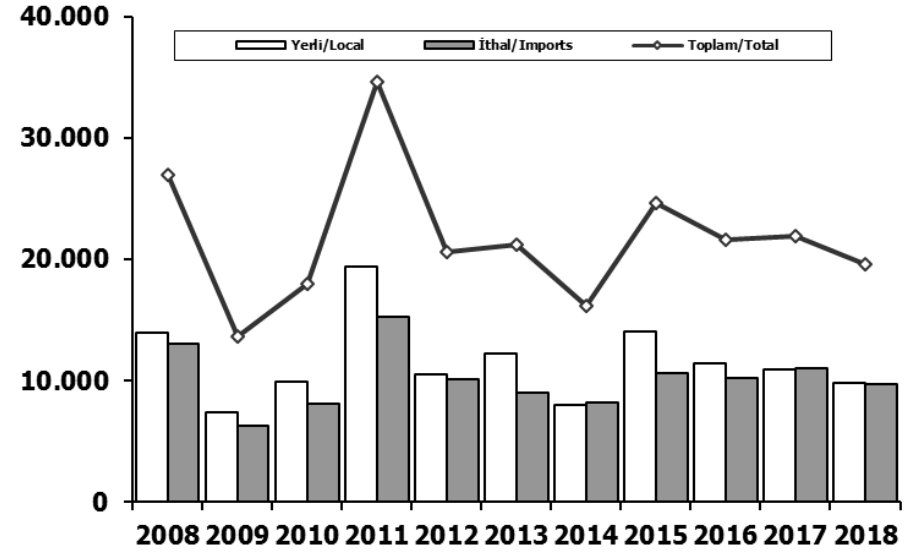
	2008	2009	2010	2011	2012	2013	2014	2015	2016	2017	2 Ay/MoAy/2017	2 Ay/MoAy/2018
Toplam/Total	526.544	575.869	793.172	910.867	817.620	893.124	807.486	1.011.194	1.007.857	980.277	84.287	84.456
İthalat/Imports	306.087	313.921	465.408	538.532	511.694	615.609	522.842	660.045	681.308	624.409	52.494	51.559
İthalat/Imports (%)	58	55	59	59	63	69	65	65	68	64	62	61

	2008	2009	2010	2011	2012	2013	2014	2015	2016	2017	2018
Yerli/Local	26.031	17.103	19.756	40.483	27.386	26.842	20.779	32.531	28.901	30.474	31.493
İthal/Imports	40.747	24.245	31.511	63.072	43.483	56.988	46.912	57.415	56.637	51.814	50.592
Toplam/Total	66.778	41.348	51.267	103.555	70.869	83.830	67.691	89.946	85.538	82.288	82.085
İthalat/Imports (%)	61	59	61	61	61	68	69	64	66	63	62

## Otomobil Pazarı (2008-2018 Ocak-Şubat) P.Cars Market (2008-2018 January-February)

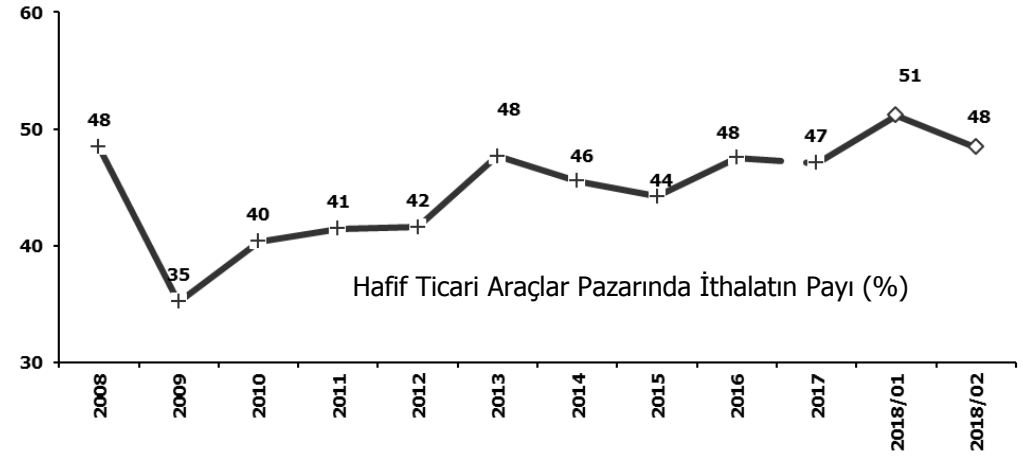
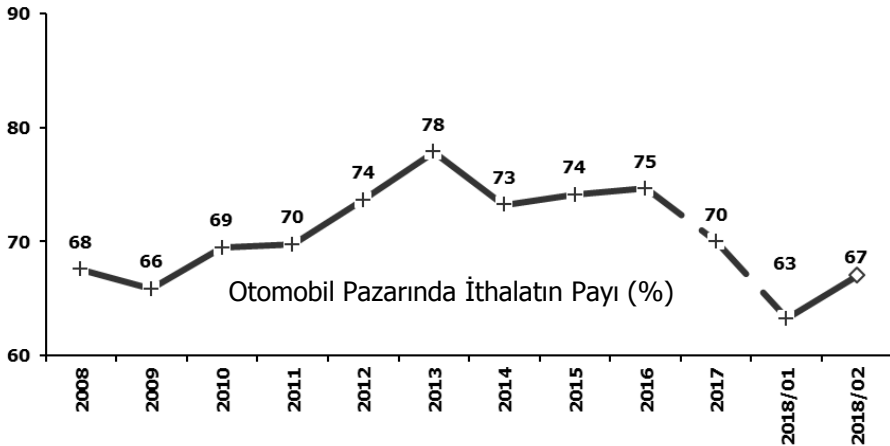


## Hafif Ticari Araçlar Pazarı (2008-2018 Ocak-Şubat) Light Commercial Vehicle Market (2008-2018 January-February)



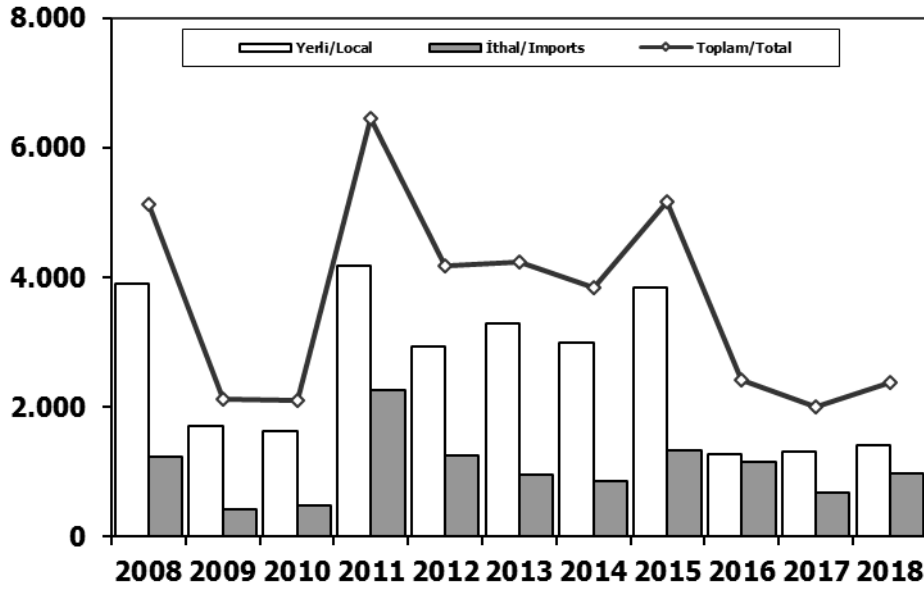
	2008	2009	2010	2011	2012	2013	2014	2015	2016	2017	2018
Yerli/Local	12.050	9.687	9.828	21.103	16.911	14.658	12.805	18.514	17.491	19.571	21.631
İthal/Imports	27.734	17.978	23.417	47.769	33.355	47.991	38.730	46.801	46.455	40.776	40.881
Toplam/Total	39.784	27.665	33.245	68.872	50.266	62.649	51.535	65.315	63.946	60.347	62.512
İthalat/Imports (%)	70	65	70	69	66	77	75	72	73	68	65

	2008	2009	2010	2011	2012	2013	2014	2015	2016	2017	2018
Yerli/Local	13.981	7.416	9.928	19.380	10.475	12.184	7.974	14.017	11.410	10.903	9.862
İthal/Imports	13.013	6.267	8.094	15.303	10.128	8.997	8.182	10.614	10.182	11.038	9.711
Toplam/Total	26.994	13.683	18.022	34.683	20.603	21.181	16.156	24.631	21.592	21.941	19.573
İthalat/Imports (%)	48	46	45	44	49	42	51	43	47	50	50



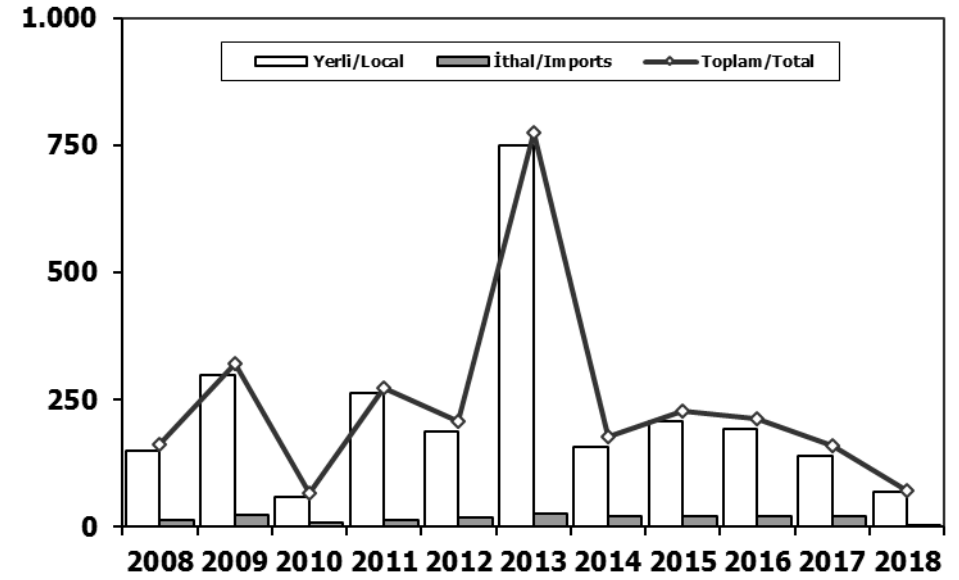
## Ağır Ticari Araçlar Pazarı (2008-2018 Ocak-Şubat)

### HCV Market (2008-2018 January-February)



## Otobüs Pazarı (2008-2018 Ocak-Şubat)

### Bus Market (2008-2018 January-February)

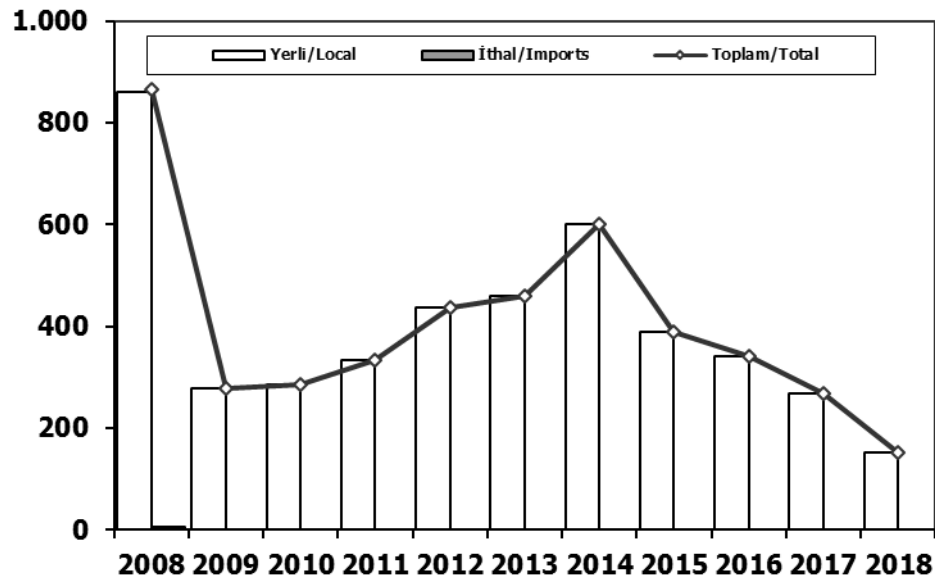


	2008	2009	2010	2011	2012	2013	2014	2015	2016	2017	2018
<b>Yerli/Local</b>	3.906	1.712	1.622	4.183	2.935	3.286	2.988	3.841	1.272	1.319	1.404
<b>İthal/Imports</b>	1.229	417	474	2.268	1.242	955	854	1.322	1.153	680	967
<b>Toplam/Total</b>	5.135	2.129	2.096	6.451	4.177	4.241	3.842	5.163	2.425	1.999	2.371
<b>İthalat/Imports (%)</b>	24	20	23	35	30	23	22	26	48	34	41

	2008	2009	2010	2011	2012	2013	2014	2015	2016	2017	2018
<b>Yerli/Local</b>	150	298	58	262	188	749	156	207	192	139	68
<b>İthal/Imports</b>	12	23	7	12	19	25	20	20	20	20	2
<b>Toplam/Total</b>	162	321	65	274	207	774	176	227	212	159	70
<b>İthalat/Imports (%)</b>	7	7	11	4	9	3	11	9	9	13	3

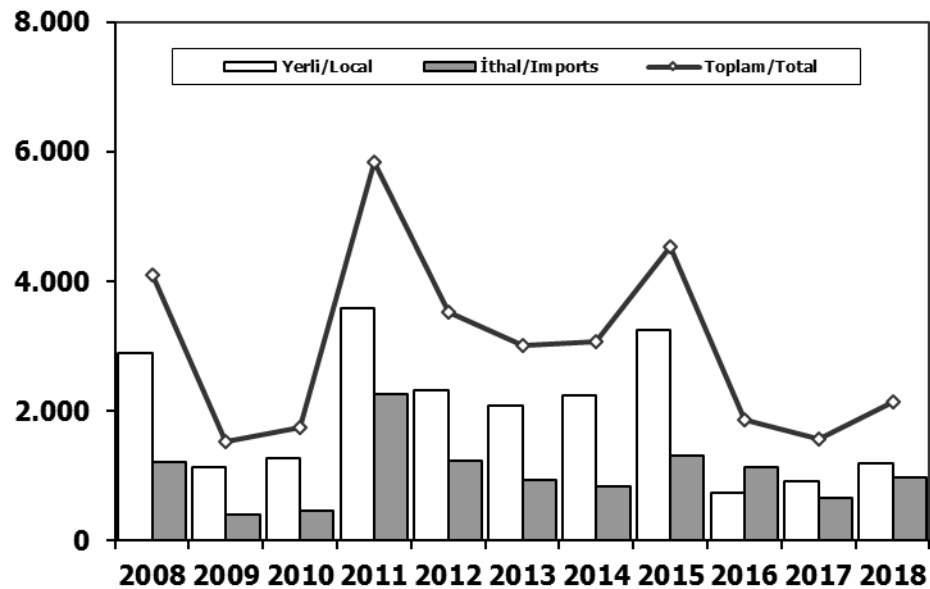
## Midibüs Pazarı (2008-2018 Ocak-Şubat) (7-9 mt / 25-35 Kişilik)

Midibus Market (2008-2018 January-February) (7-9 mt / 25-35 Passengers)



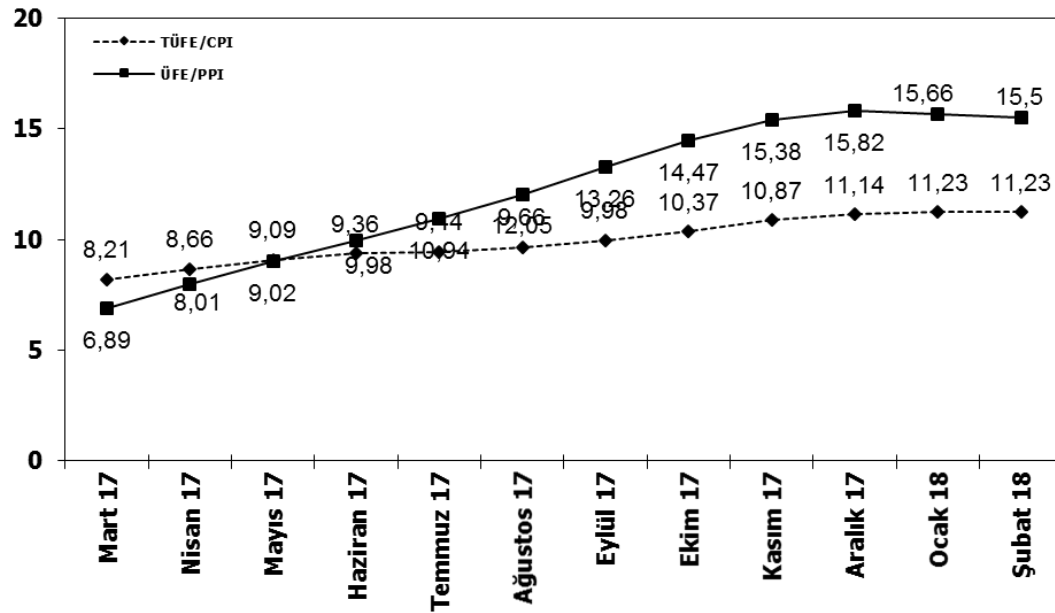
## Kamyon Pazarı (2008-2018 Ocak-Şubat)

Truck Market (2008-2018 January-February)

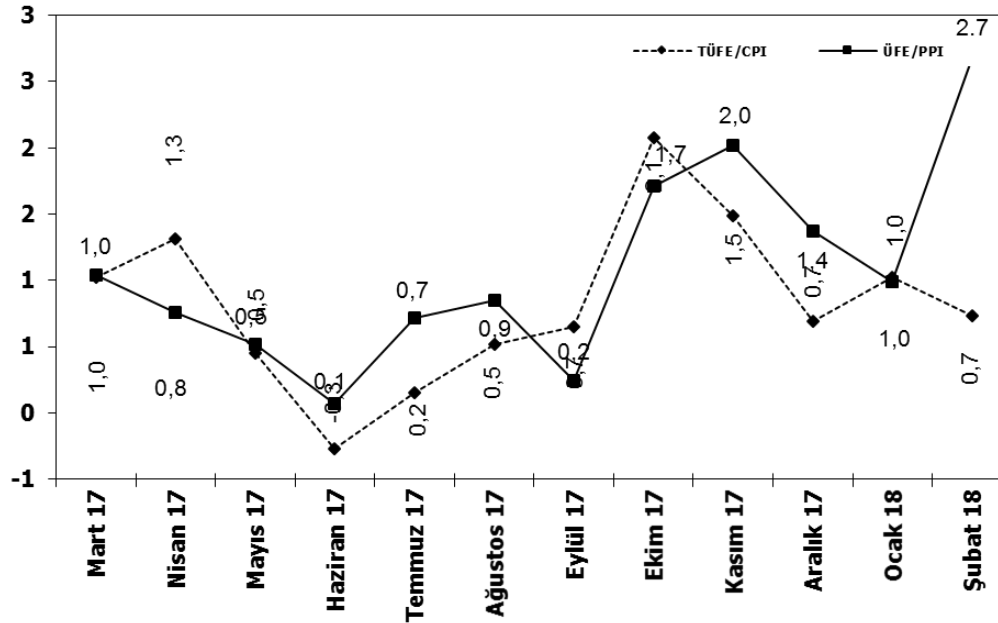


	2008	2009	2010	2011	2012	2013	2014	2015	2016	2017	2018		2008	2009	2010	2011	2012	2013	2014	2015	2016	2017	2018
<b>Yerli/Local</b>	861	278	286	333	436	459	600	390	341	269	152	<b>Yerli/Local</b>	2.895	1.136	1.278	3.588	2.311	2.078	2.232	3.244	739	911	1.184
<b>İthal/Imports</b>	6	0	0	0	0	0	0	0	0	0	0	<b>İthal/Imports</b>	1.211	394	467	2.256	1.223	930	834	1.302	1.133	660	965
<b>Toplam/Total</b>	867	278	286	333	436	459	600	390	341	269	152	<b>Toplam/Total</b>	4.106	1.530	1.745	5.844	3.534	3.008	3.066	4.546	1.872	1.571	2.149
<b>İthalat/Imports (%)</b>	1	0	0	0	0	0	0	0	0	0	0	<b>İthalat/Imports (%)</b>	29	26	27	39	35	31	27	29	61	42	45

## TÜFE ve ÜFE'nin 12 Aylık Ort. Değişimi (%) CPI and PPI 12 Months Avr. Changes (%)



## TÜFE ve ÜFE'nin Aylık Değişimi (%) CPI and PPI Monthly Changes (%)





**2018 YILI İTHAL OTOMOBİL SATIŞLARI / P.Cars Import 2018**

	2017 TOPLAMI 2017 Total	1	2	3	4	5	6	7	8	9	10	11	12	2018 TOPLAMI 2018 Total
VOLKSWAGEN	89.688	2.497	3.763											6.260
SKODA	24.679	1.564	2.161											3.725
HYUNDAI	26.841	1.282	1.734											3.016
OPEL	44.707	1.327	1.568											2.895
RENAULT	37.021	1.013	1.552											2.565
PEUGEOT	29.981	809	1.625											2.434
FORD	33.671	920	1.440											2.360
MERCEDES- BENZ	25.588	1.190	1.151											2.341
NISSAN	32.043	767	1.470											2.237
DACIA	41.914	937	1.298											2.235
AUDI	21.585	1.013	1.033											2.046
BMW	19.564	626	1.003											1.629
CITROEN	14.709	407	1.128											1.535
SEAT	16.064	663	869											1.532
KIA	10.937	431	514											945
TOYOTA	7.297	309	376											685
VOLVO	4.470	250	302											552
HONDA	7.250	207	189											396
IEEP	2.357	101	159											260
LAND ROVER	1.879	84	145											229
SUZUKI	4.316	67	122											189
FIAT	2.157	56	102											158
SUBARU	1.726	86	55											141
MAZDA	1.412	62	76											138
MINI	1.480	55	82											137
PORSCHE	670	43	50											93
SSANGYONG	362	26	25											51
JAGUAR	339	12	20											32
MITSUBISHI	354	12	9											21
ALFA ROMEO	320	5	14											19
INFINITI	122	3	5											8
MASERATI	76	4	2											6
LEXUS	101	2	2											4
BENTLEY	16	0	3											3
ASTON MARTIN	25	1	1											2
FERRARI	16	1	1											2
DS	119	0	0											0
SMART	105	0	0											0
LAMBORGHINI	7	0	0											0
<b>TOPLAM</b>	<b>505.968</b>	<b>16.832</b>	<b>24.049</b>	<b>0</b>	<b>0</b>	<b>0</b>	<b>0</b>	<b>0</b>	<b>0</b>	<b>0</b>	<b>0</b>	<b>0</b>	<b>0</b>	<b>40.881</b>

**2018 YILI İTHAL HAFİF TİCARİ ARAÇ SATIŞLARI / Light Commercial Vehicles Import 2018**

	2017 TOPLAMI 2017 Total	1	2	3	4	5	6	7	8	9	10	11	12	2018 TOPLAMI 2018 Total
VOLKSWAGEN	27.793	1.630	1.516											3.146
RENAULT	16.822	512	793											1.305
MERCEDES- BENZ	9.043	480	646											1.126
DACIA	6.456	254	302											556
MITSUBISHI	3.527	158	347											505
TOYOTA	4.551	210	267											477
PEUGEOT	10.458	178	277											455
FIAT	6.582	163	252											415
CITROEN	8.023	94	291											385
FORD	4.188	174	142											316
IVECO	2.566	122	148											270
KIA	3.591	111	143											254
NISSAN	2.779	95	154											249
HYUNDAI	2.984	119	85											204
ISUZU	302	24	18											42
SSANGYONG	255	5	1											6
<b>TOPLAM</b>	<b>109.920</b>	<b>4.329</b>	<b>5.382</b>	<b>0</b>	<b>0</b>	<b>0</b>	<b>0</b>	<b>0</b>	<b>0</b>	<b>0</b>	<b>0</b>	<b>0</b>	<b>0</b>	<b>9.711</b>