



OTOMOTİV SANAYİİ DERNEĞİ
AUTOMOTIVE MANUFACTURERS ASSOCIATION

AYLIK RAPOR

Automotive Industry Monthly Report

Şubat / February 2017

- **Üretim/Production**
- **Satış/Sales**
- **İthalat/Imports**
- **İhracat/Exports**

OSD "OICA" Üyesidir



OSD is a Member of "OICA"

2017 Şubat Ayı Özeti / 2017 February Summary

		ŞUBAT / FEBRUARY			2 AY/ 2 MONTHS			SON 12 AYLIK / YoY		
		2016	2017	2017/2016 (%)	2016	2017	2017/2016 (%)	2016	2017	2017/2016 (%)
Üretim/Production	Toplam/Total	120.691	138.369	15	218.335	266.490	22	1.365.545	1.534.082	12
	Otomobil/P.Cars	72.740	97.129	34	130.945	190.812	46	796.320	1.010.755	27
Pazar/Market	Toplam/Total	54.223	48.141	-11	87.963	84.289	-4	1.004.048	1.004.183	0
	Otomobil/P.Cars	40.588	34.658	-15	63.946	60.347	-6	724.227	753.339	4
İthalat/Import	Toplam/Total	36.798	30.668	-17	57.790	52.494	-9	657.743	676.012	3
	Otomobil/P.Cars	30.472	23.880	-22	46.455	40.776	-12	538.466	559.366	4
İhracat/Export	Toplam/Total	98.697	116.063	18	167.497	219.434	31	999.950	1.193.308	19
	Otomobil/P.Cars	60.149	81.990	36	98.770	158.483	60	603.683	805.422	33
İhracat / Export (\$)	Toplam/Total **	2.027.103.041	2.250.740.799	11	3.574.208.971	4.334.080.447	21	21.686.619.635	25.009.055.948	15
	Otomobil/P.Cars	581.958.082	930.713.193	60	958.093.217	1.843.520.357	92	6.697.409.230	9.222.375.734	38

PARAMETRELER / PARAMETERS		ŞUBAT / FEBRUARY			2 AY/ 2 MONTHS			SON 12 AYLIK / YoY		
		2016	2017	2017/2016 (%)	2016	2017	2017/2016 (%)	2016	2017	2017/2016 (%)
ÜFE/PPI		-0,20	1,26	**	0,34	5,29	**	5,61	5,87	**
TÜFE/CPI		-0,02	0,81	**	1,80	3,29	**	7,97	7,88	**
Sanayi Endeksi/Industry Index		0,15	1,36	**	0,70	5,29	**	6,27	7,32	**
\$ (*)		2,9621	3,6887	25	2,9558	3,6733	24	2,8137	3,1249	11
EURO (*)		3,2242	3,9450	22	3,2212	3,9123	21	3,0923	3,4339	11
Japon Yeni (*)		2,5184	3,2509	29	2,4826	3,2020	29	2,3133	2,8640	24

(*) Ortalama Değerler / Average Values

(**) Toplam Sanayi / Total Industry Including Components

*Raporda yer alan üretim adetleri yalnızca OSD üyelerinin verilerini göstermektedir.
Production units in this report only show the data of OSD members.*

2016/2017 Yılları Üretim

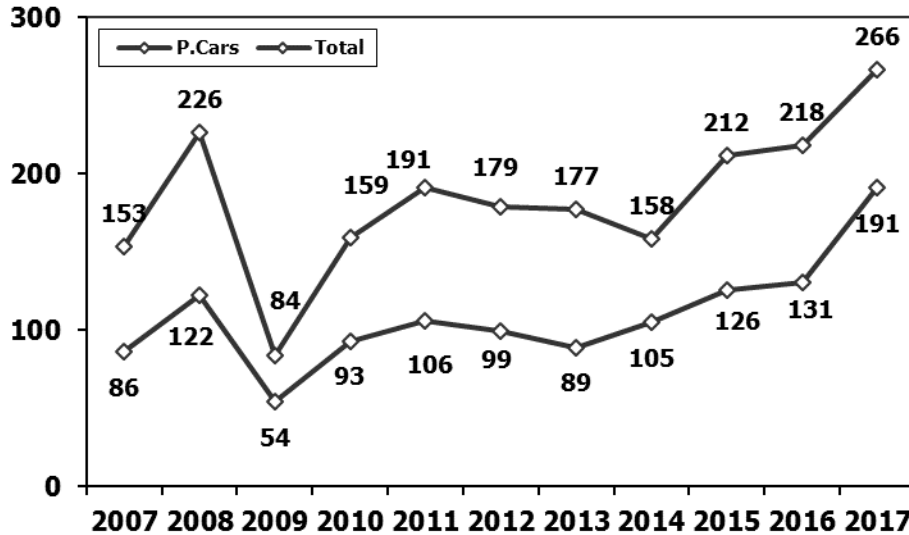
2016/2017 Production

K.KAMYON : AYA 3.5-12 Ton (L.Truck:GVW 3.5-12 Ton)

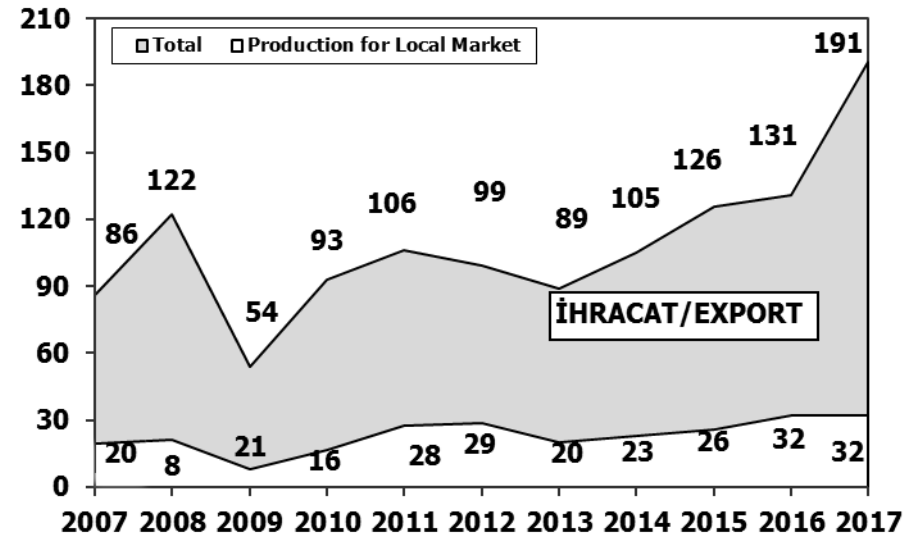
B.KAMYON : AYA 12 Ton'dan Büyük (M.Truck:GVW 12 Ton And Up)

TİPLER	ŞUBAT AYI ÜRETİMİ February Production		2 AYLIK ÜRETİM 2 Months Production		DEĞİŞİM % Percent Change %	
	2016	2017	2016	2017	ŞUBAT February	2 AY 2 Months
OTOMOBİL - Pass.Car	72.740	97.129	130.945	190.812	34	46
TİCARİ ARAÇLAR - Commercial Vehicles	47.951	41.240	87.390	75.678	-14	-13
* B. KAMYON - M. Truck	976	1.412	1.365	2.153	45	58
* K. KAMYON - L. Truck	-	266	60	449	-	648
* KAMYONET - Pick Up	44.637	34.823	81.574	63.771	-22	-22
* OTOBÜS - Bus	711	700	1.300	1.483	-2	14
* MİNİBÜS - Minibus	1.388	3.791	2.778	7.373	173	165
* MİDİBÜS - Midibus	239	248	313	449	4	43
TAŞIT ARAÇLARI TOPLAM - MV Total	120.691	138.369	218.335	266.490	15	22
TRAKTÖR - F.Tractor	4.680	3.868	8.707	7.488	-17	-14
GENEL TOPLAM - Grand Total	125.371	142.237	227.042	273.978	13	21

Toplam Üretim ve Otomobil Üretimi (x1000) (Ocak-Şubat)
Total & P.Cars Production (x1000) (January-February)

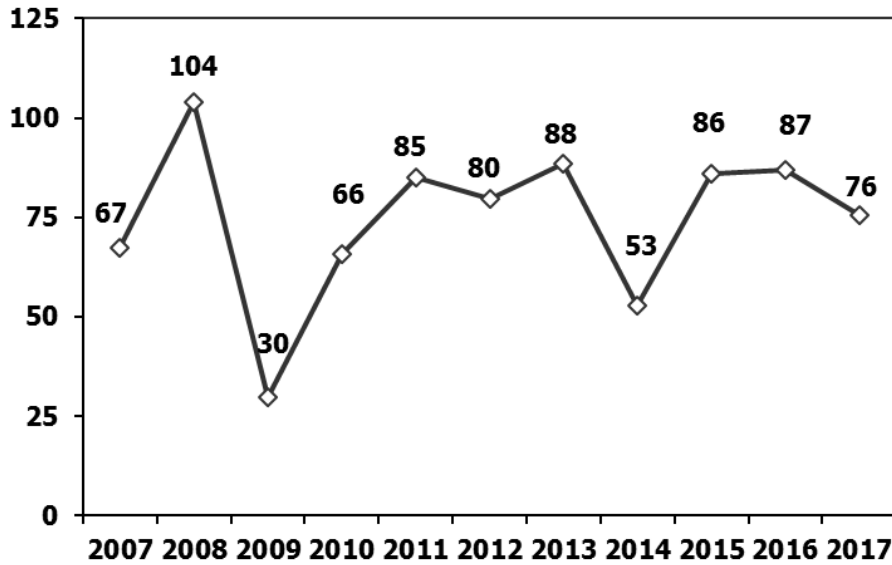


Otomobil Üretimi ve İhracat (x1000) (Ocak-Şubat)
P.Cars Production & Exports (x1000) (January-February)



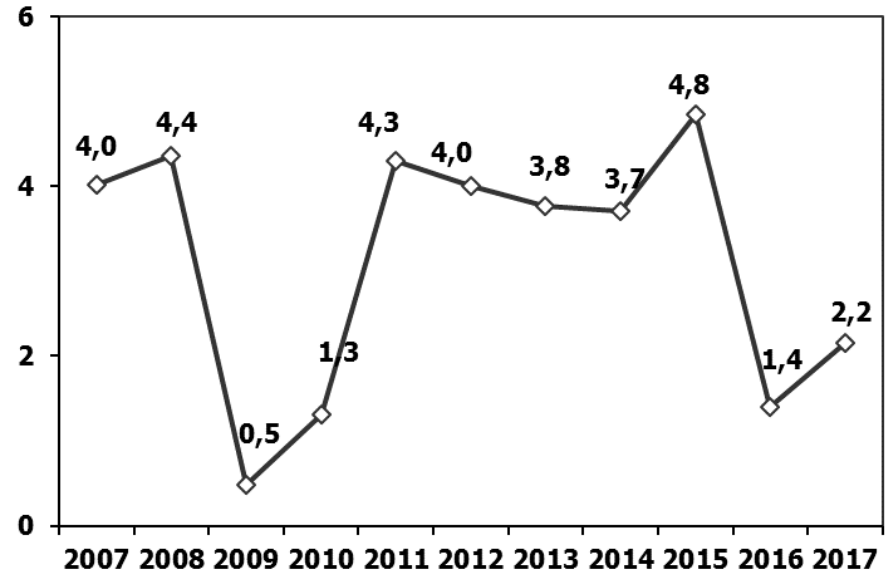
Ticari Araç Üretimi (x1000) (Ocak-Şubat)

Commercial Vehicle Production (x1000) (January-February)



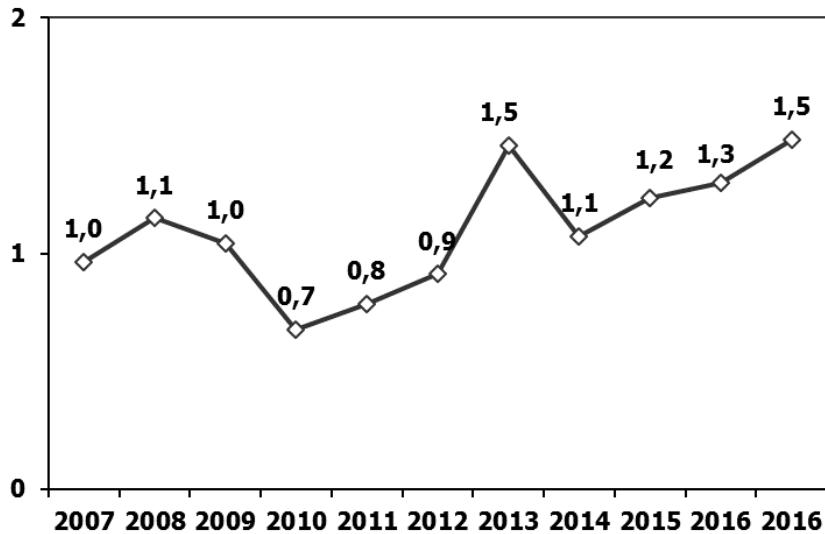
(AYA >12 Ton) Büyük Kamyon Üretimi (x1000) (Ocak-Şubat)

(GVW >12 Ton) Heavy Truck Production (x1000) (January-February)



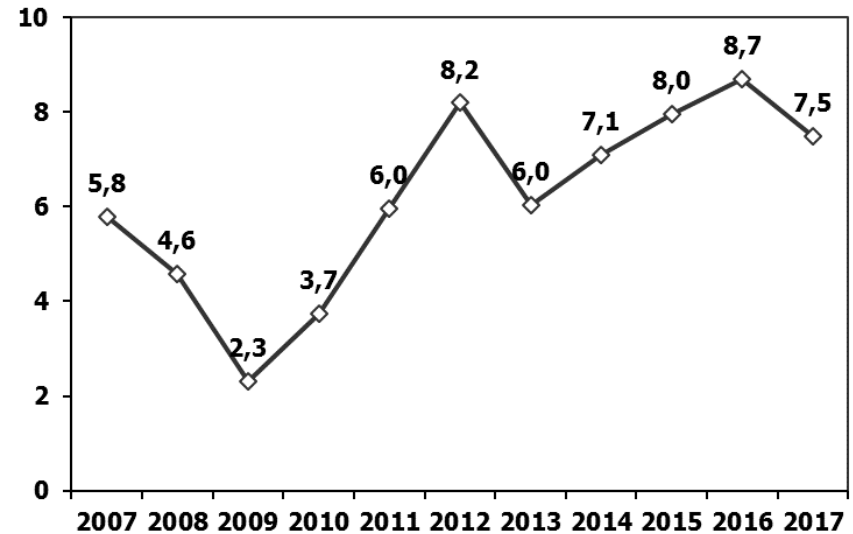
Otobüs Üretimi (x1000) (Ocak-Şubat)

Bus Production (x1000) (January-February)



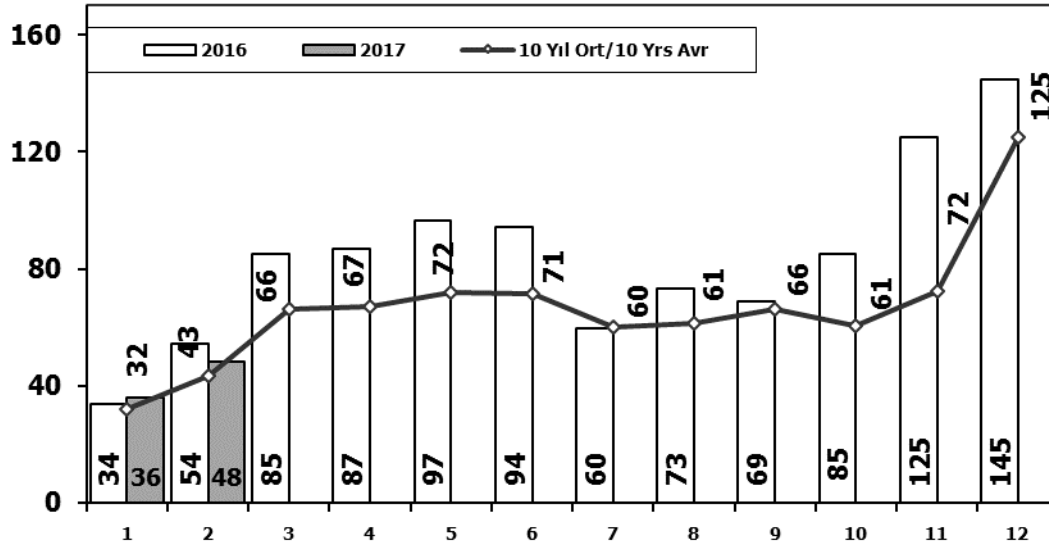
Traktör Üretimi (x1000) (Ocak-Şubat)

F. Tractor Production (x1000) (January-February)



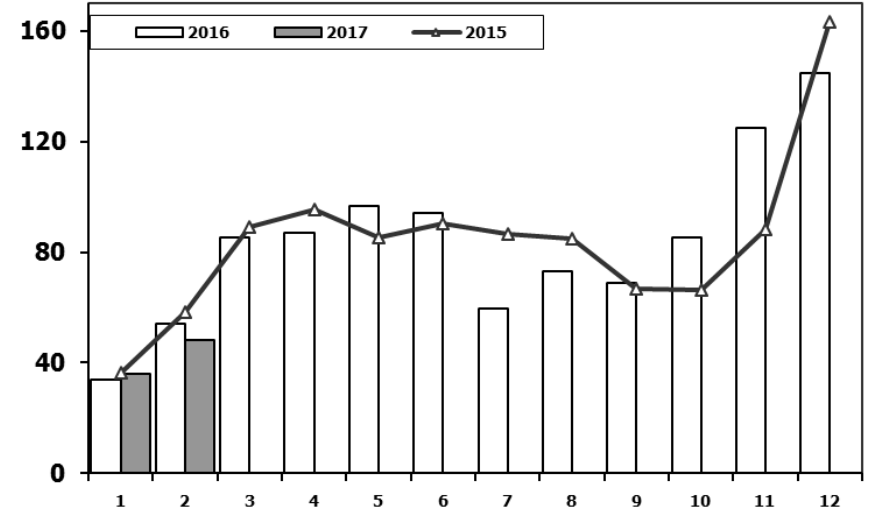
Toplam Pazarın Analizi (x1000)

Total Market Analysis (x1000)



Toplam Pazar (x1000)

Total Market (x1000)

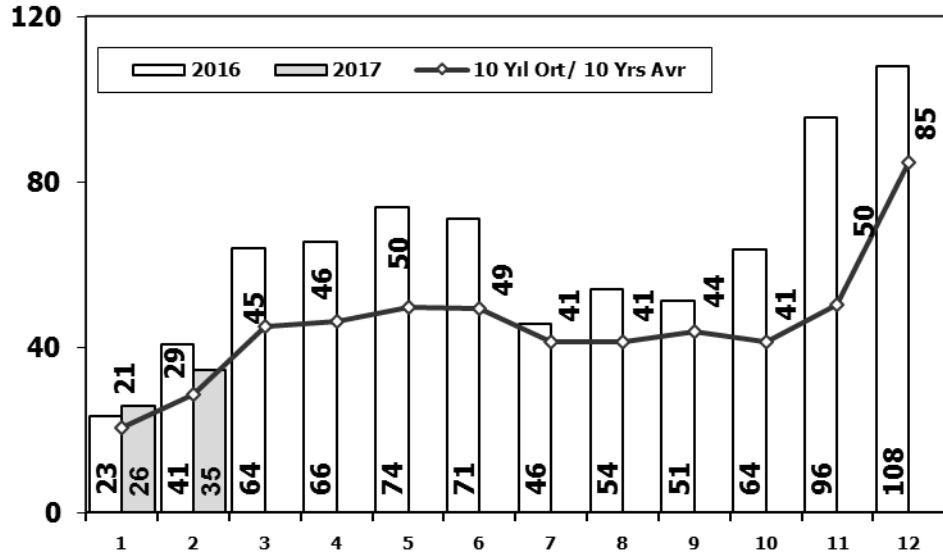


Aylar / Months	10 Yil Ort. 10 Yrs Avr. (x1000)	2017 (x1000)	%
1	32,1	36,1	12,6
2	43,2	48,1	11,4
Total	75,3	84,3	11,9

	1	2	3	4	5	6	7	8	9	10	11	12	2 Ay/Mo	Total
2007	24.950	31.702	45.488	45.633	51.255	51.661	50.117	54.171	50.078	56.058	67.017	106.076	56.652	634.206
2008	33.792	38.121	56.814	50.967	51.627	49.393	44.692	46.592	46.829	35.147	28.152	44.418	71.913	526.544
2009	20.631	22.846	56.531	54.426	64.887	63.102	30.246	37.092	83.403	22.117	29.202	91.386	43.477	575.869
2010	21.050	32.313	53.828	57.079	61.628	63.390	63.718	64.645	66.601	76.780	77.406	154.734	53.363	793.172
2011	47.658	62.348	83.333	82.071	85.093	85.863	65.364	61.378	63.643	72.640	67.195	134.281	110.006	910.867
2012	31.219	43.827	68.957	66.014	74.820	74.781	65.122	60.848	73.197	62.677	75.045	121.113	75.046	817.620
2013	37.140	50.931	72.688	77.015	85.421	77.771	74.726	67.383	71.037	60.399	83.017	135.596	88.071	893.124
2014	34.225	37.308	50.964	56.766	61.909	63.952	62.206	62.839	70.180	69.259	83.937	153.941	71.533	807.486
2015	36.576	58.533	89.121	95.431	85.145	90.463	86.625	84.683	66.622	66.520	88.043	163.432	95.109	1.011.194
2016	33.740	54.223	85.214	87.041	96.576	94.203	59.505	73.269	69.068	85.251	124.839	144.928	87.963	1.007.857
2017	36.148	48.141											84.289	84.289

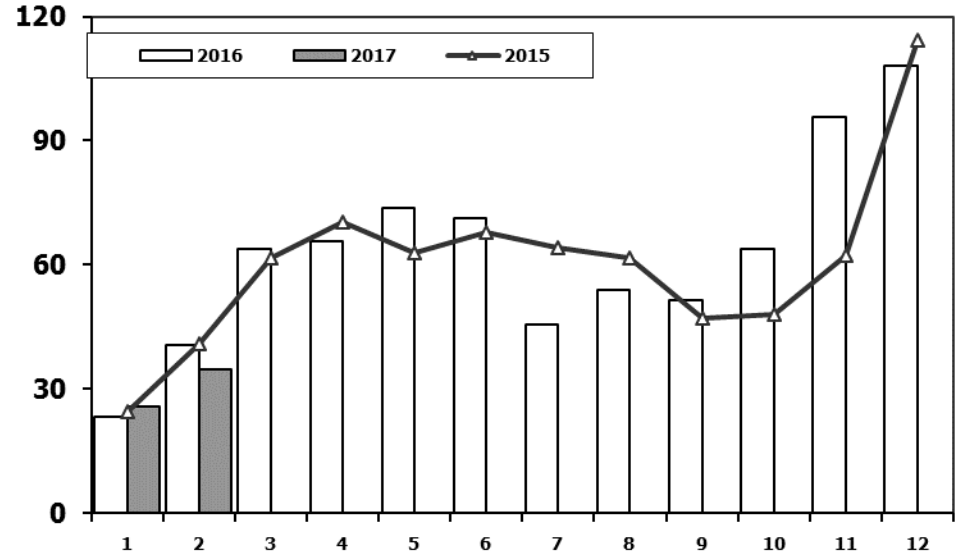
Otomobil Pazarının Analizi (x1000)

P.Cars Market Analysis (x1000)



Otomobil Pazarı (x1000)

P.Cars Market (x1000)

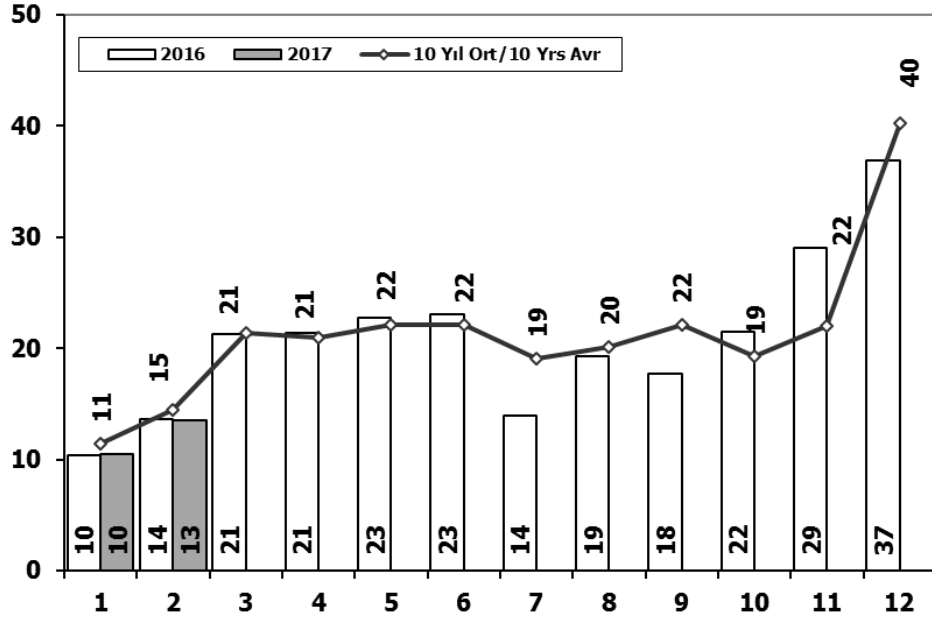


	1	2	3	4	5	6	7	8	9	10	11	12	2 Ay/Mo	Total
2007	13.186	17.212	24.336	25.204	29.067	30.126	28.246	28.469	27.662	32.569	39.643	61.745	30.398	357.465
2008	18.588	21.196	34.147	30.313	31.477	28.724	25.530	26.102	27.053	19.788	17.201	25.879	39.784	305.998
2009	13.173	14.492	40.622	36.202	44.188	41.019	16.637	22.537	52.162	13.828	17.781	57.178	27.665	369.819
2010	12.594	20.651	33.958	36.549	40.467	42.086	41.399	42.222	42.477	47.859	50.061	99.461	33.245	509.784
2011	29.868	39.004	54.023	53.835	56.302	56.714	43.518	38.875	39.964	47.508	44.951	88.957	68.872	593.519
2012	21.077	29.189	47.270	45.645	50.460	50.849	44.531	41.236	49.360	43.440	52.297	80.926	50.266	556.280
2013	25.835	36.814	51.785	56.999	62.383	58.290	55.712	51.611	52.925	46.985	64.117	101.199	62.649	664.655
2014	24.368	27.167	37.812	42.769	46.379	47.278	46.602	45.131	49.262	50.814	59.695	110.054	51.535	587.331
2015	24.498	40.817	61.676	70.211	62.878	67.766	64.218	61.753	47.088	47.954	62.397	114.340	65.315	725.596
2016	23.358	40.588	63.975	65.618	73.832	71.111	45.566	53.977	51.340	63.746	95.783	108.044	63.946	756.938
2017	25.689	34.658											60.347	60.347

Aylar / Months	10 Yil Ort. 10 Yrs Avr. (x1000)	2017 (x1000)	%
1	20,7	25,7	24,4
2	28,7	34,7	20,7
Total	49,4	60,3	22,2

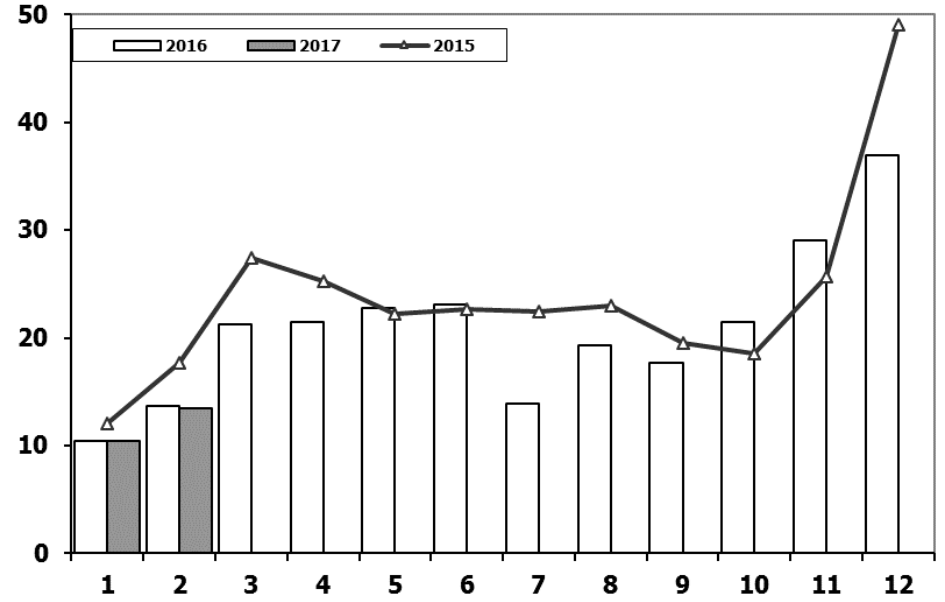
Ticari Araç Pazarının Analizi (x1000)

CV Market Analysis (x1000)



Ticari Araç Pazarı (x1000)

CV Total Market (x1000)

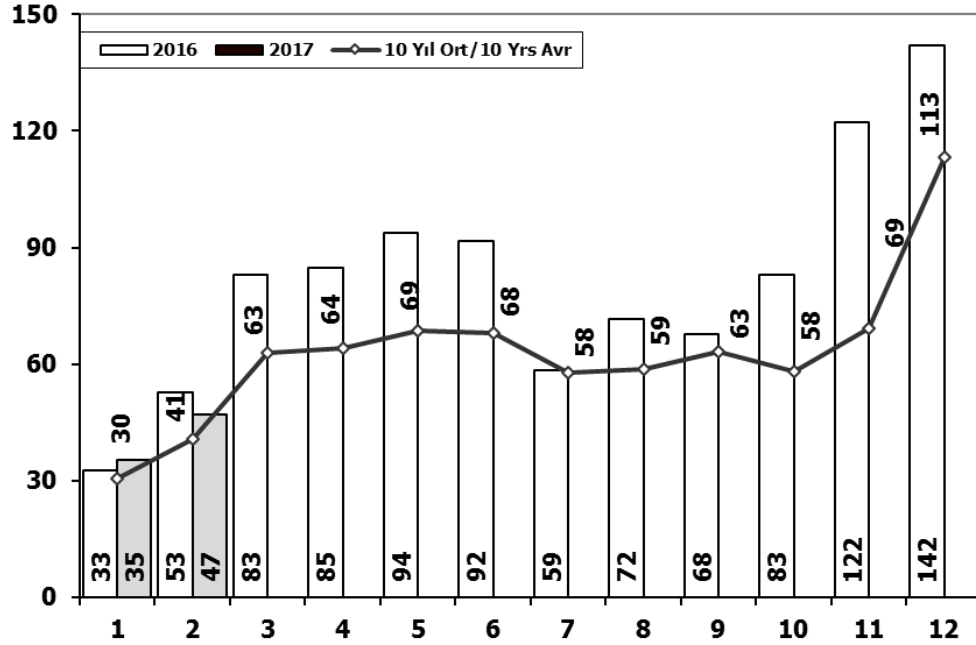


	1	2	3	4	5	6	7	8	9	10	11	12	2 Ay/Mo	Total
2007	11.764	14.490	21.152	20.429	22.188	21.535	21.871	25.702	22.416	23.489	27.374	44.331	26.254	276.741
2008	15.204	16.925	22.667	20.654	20.150	20.669	19.162	20.490	19.776	15.359	10.951	18.539	32.129	220.546
2009	7.458	8.354	15.909	18.224	20.699	22.083	13.609	14.555	31.241	8.289	11.421	34.208	15.812	206.050
2010	8.456	11.662	19.870	20.530	21.161	21.304	22.319	22.423	24.124	28.921	27.345	55.273	20.118	283.388
2011	17.790	23.344	29.310	28.236	28.791	29.149	21.846	22.503	23.679	25.132	22.244	45.324	41.134	317.348
2012	10.142	14.638	21.687	20.369	24.360	23.932	20.591	19.612	23.837	19.237	22.748	40.187	24.780	261.340
2013	11.305	14.117	20.903	20.016	23.038	19.481	19.014	15.772	18.112	13.414	18.900	34.397	25.422	228.469
2014	9.857	10.141	13.152	13.997	15.530	16.674	15.604	17.708	20.918	18.445	24.242	43.887	19.998	220.155
2015	12.078	17.716	27.445	25.220	22.267	22.697	22.407	22.930	19.534	18.566	25.646	49.092	29.794	285.598
2016	10.382	13.635	21.239	21.423	22.744	23.092	13.939	19.292	17.728	21.505	29.056	36.884	24.017	250.919
2017	10.459	13.483											23.942	23.942

Aylar / Months	10 Yıl Ort. / 10 Yrs Avr. (x1000)	2017 (x1000)	%
1	11,4	10,5	-8,6
2	14,5	13,5	-7,0
Total	25,9	23,9	-7,7

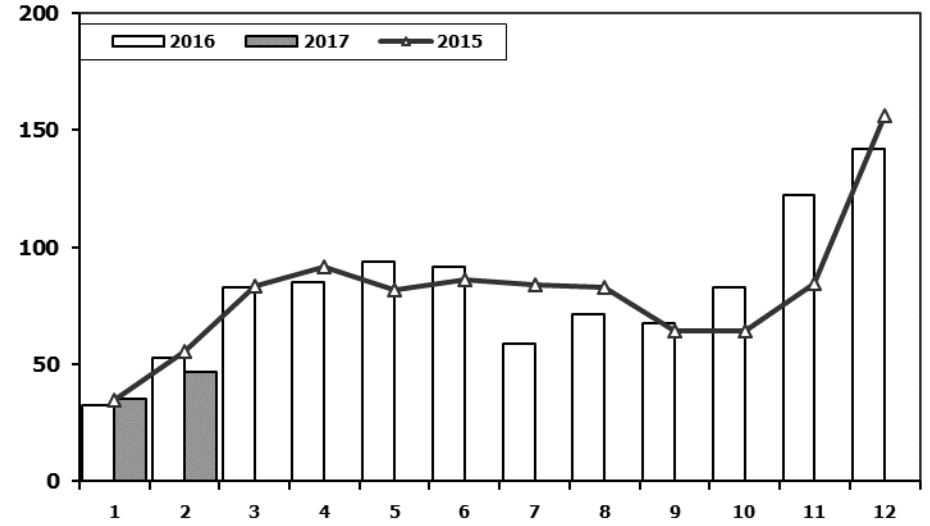
Hafif Araç Pazarının Analizi (x1000)

LV Market Analysis (x1000)



Hafif Araç Pazarı (x1000)

LV Total Market (x1000)

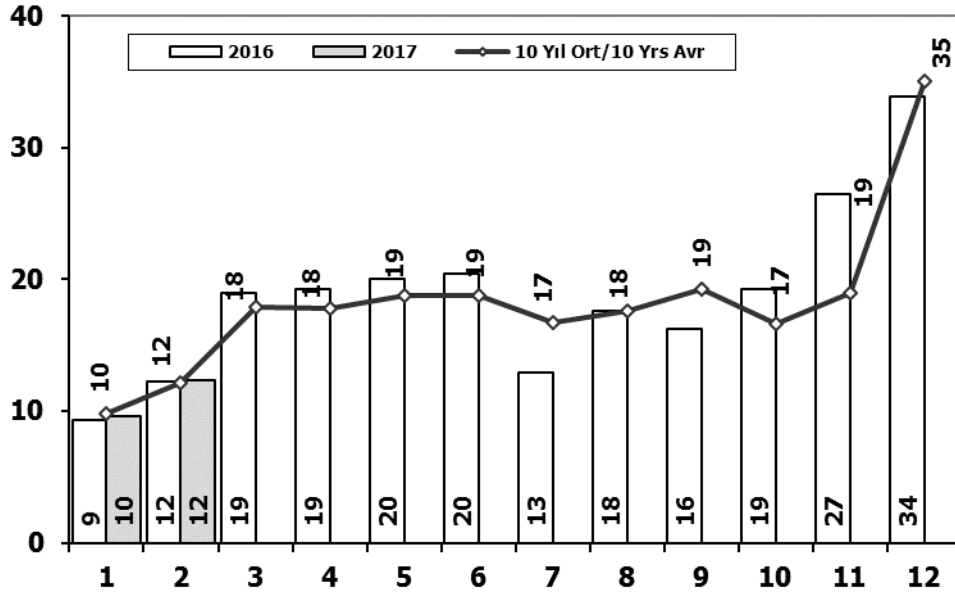


Aylar / Months	10 Yil Ort. 10 Yrs Avr. (x1000)	2017 (x1000)	%
1	30,4	35,3	16,1
2	40,9	47,0	14,9
Total	71,3	82,3	15,4

	1	2	3	4	5	6	7	8	9	10	11	12	2 Ay/Mo	Total
2007	23.117	29.184	41.890	42.366	47.938	48.674	47.490	50.558	46.581	52.725	63.313	100.926	52.301	594.762
2008	31.527	35.251	53.649	47.701	48.598	46.324	42.156	43.670	43.932	32.884	26.253	42.078	66.778	494.023
2009	19.606	21.742	55.111	52.640	63.191	61.067	28.845	35.609	81.397	21.033	27.962	88.923	41.348	557.126
2010	20.095	31.172	51.769	54.946	59.377	60.896	61.345	61.764	63.814	73.404	73.962	148.369	51.267	760.913
2011	44.892	58.663	78.403	77.695	80.646	81.573	63.044	58.406	60.129	69.421	63.657	127.910	103.555	864.439
2012	29.545	41.324	64.884	62.949	70.863	71.067	62.304	58.148	69.629	59.938	71.710	115.400	70.869	777.761
2013	35.523	48.307	68.774	73.575	81.468	74.096	71.596	65.043	67.963	58.014	79.301	129.718	83.830	853.378
2014	32.670	35.021	47.581	53.305	58.121	60.163	59.907	60.199	66.531	66.573	80.621	146.989	67.691	767.681
2015	34.615	55.331	83.302	91.602	81.542	86.158	83.836	82.577	64.025	64.255	84.601	156.173	89.946	968.017
2016	32.713	52.825	82.948	84.887	93.904	91.540	58.533	71.556	67.593	83.000	122.309	141.912	85.538	983.720
2017	35.323	46.965											82.288	82.288

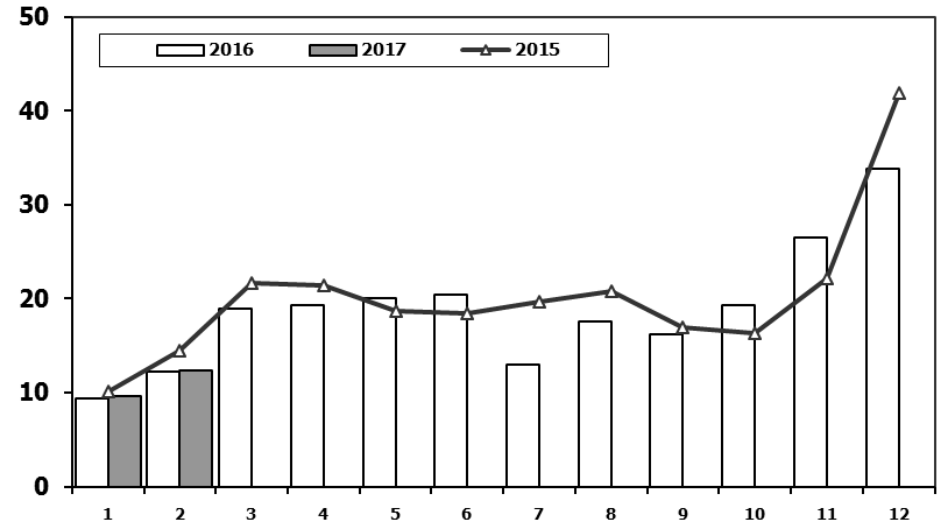
Hafif Ticari Araç Pazarının Analizi (x1000)

LCV Market Analysis (x1000)



Hafif Ticari Araç Pazarı (x1000)

LCV Total Market (x1000)

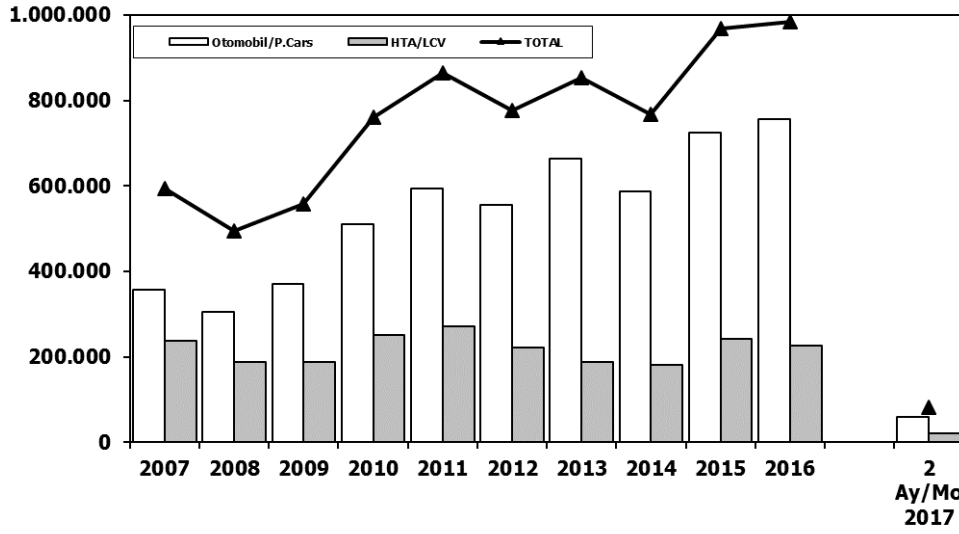


Aylar / Months	10 Yıl Ort. 10 Yrs Avr. (x1000)	2017 (x1000)	%
1	9,8	9,6	-1,5
2	12,2	12,3	1,1
Total	21,9	21,9	0,0

	1	2	3	4	5	6	7	8	9	10	11	12	2 Ay/Mo	Total
2007	9.931	11.972	17.554	17.162	18.871	18.548	19.244	22.089	18.919	20.156	23.670	39.181	21.903	237.297
2008	12.939	14.055	19.502	17.388	17.121	17.600	16.626	17.568	16.879	13.096	9.052	16.199	26.994	188.025
2009	6.433	7.250	14.489	16.438	19.003	20.048	12.208	13.072	29.235	7.205	10.181	31.745	13.683	187.307
2010	7.501	10.521	17.811	18.397	18.910	18.810	19.946	19.542	21.337	25.545	23.901	48.908	18.022	251.129
2011	15.024	19.659	24.380	23.860	24.344	24.859	19.526	19.531	20.165	21.913	18.706	38.953	34.683	270.920
2012	8.468	12.135	17.614	17.304	20.403	20.218	17.773	16.912	20.269	16.498	19.413	34.474	20.603	221.481
2013	9.688	11.493	16.989	16.576	19.085	15.806	15.884	13.432	15.038	11.029	15.184	28.519	21.181	188.723
2014	8.302	7.854	9.769	10.536	11.742	12.885	13.305	15.068	17.269	15.759	20.926	36.935	16.156	180.350
2015	10.117	14.514	21.626	21.391	18.664	18.392	19.618	20.824	16.937	16.301	22.204	41.833	24.631	242.421
2016	9.355	12.237	18.973	19.269	20.072	20.429	12.967	17.579	16.253	19.254	26.526	33.868	21.592	226.782
2017	9.634	12.307											21.941	21.941

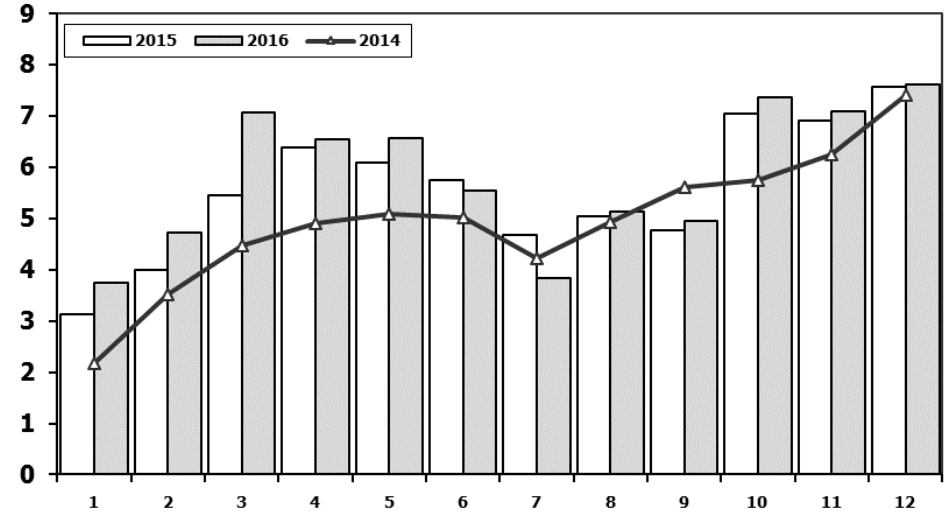
Hafif Araç Pazarı (AYA < 3.5 Ton)

Light Vehicle Market (GVW < 3.5 Ton)



Traktör Pazarı (x1000)

F.Tractor Market (x1000)



	2007	2008	2009	2010	2011	2012	2013	2014	2015	2016	2 Ay/Mo 2017
Otomobil/P.Cars	357.465	305.998	369.819	509.784	593.519	556.280	664.655	587.331	725.596	756.938	60.347
HTA/LCV	237.297	188.025	187.307	251.129	270.920	221.481	188.723	180.350	242.421	226.782	21.941
TOTAL	594.762	494.023	557.126	760.913	864.439	777.761	853.378	767.681	968.017	983.720	82.288
HTA/LCV (%)	40	38	34	33	31	28	22	23	25	23	27

	1	2	3	4	5	6	7	8	9	10	11	12	Total
2006	4.018	2.139	3.201	3.599	5.529	3.401	2.450	2.608	2.820	2.872	3.697	3.373	39.707
2007	2.816	2.244	3.053	2.657	3.188	3.141	2.497	2.381	3.025	2.755	3.549	3.097	34.403
2008	2.770	1.855	3.395	3.081	2.769	2.400	2.232	2.485	1.856	1.773	1.305	1.101	27.022
2009	717	572	688	1.070	1.297	1.256	1.054	1.183	1.117	1.356	1.304	2.144	13.758
2010	1.111	1.991	2.330	3.039	2.567	2.638	1.965	3.019	2.806	4.424	3.978	6.168	36.036
2011	2.975	5.242	5.927	5.358	6.016	6.335	4.534	4.051	4.140	5.828	4.943	4.992	60.341
2012	2.362	1.983	4.348	6.579	6.273	4.569	3.837	3.158	3.618	4.027	4.807	4.757	50.318
2013	2.161	2.432	4.005	4.585	5.616	3.136	4.574	3.408	4.935	4.762	5.781	6.891	52.286
2014	2.169	3.512	4.476	4.905	5.094	5.028	4.233	4.920	5.619	5.743	6.250	7.409	59.358
2015	3.124	3.984	5.460	6.383	6.078	5.748	4.677	5.044	4.765	7.049	6.898	7.564	66.774
2016	3.739	4.732	7.067	6.546	6.576	5.545	3.834	5.135	4.945	7.372	7.090	7.603	70.184

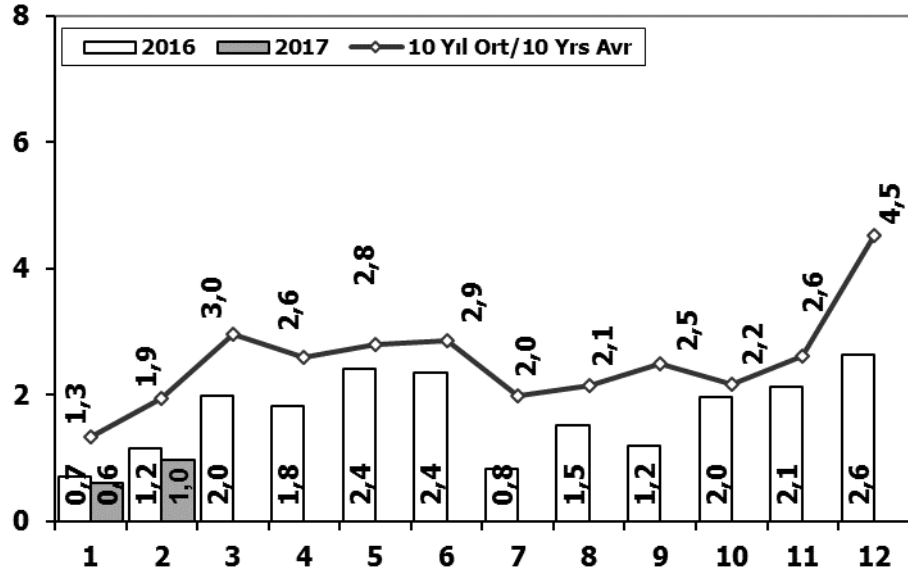
Kaynak: TÜİK trafik kayıtları.

Rakamlar, son iki model yılına ait traktör tescillerinden oluşmaktadır.

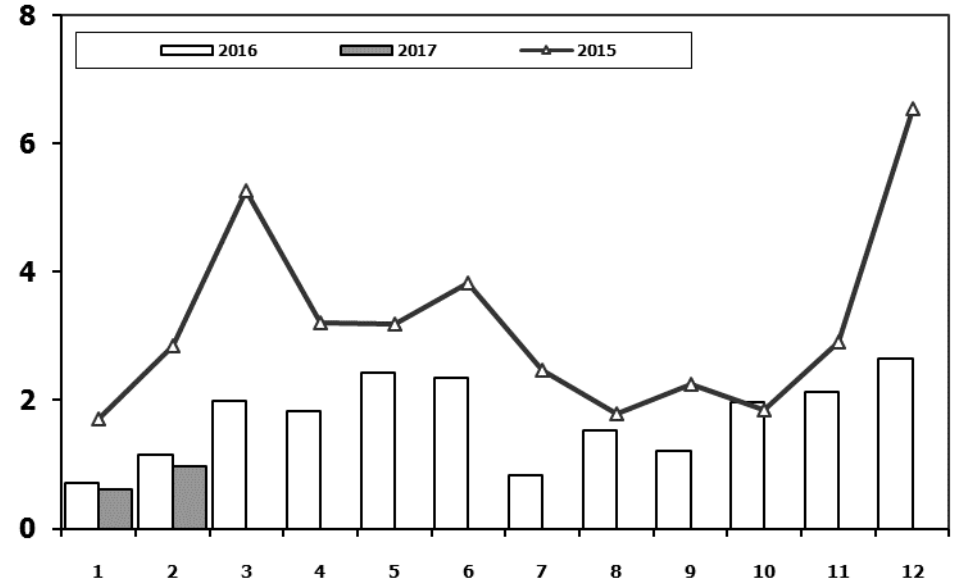
Source: Turkish Statistical Institute – Traffic registrations

Data represents the last two model year's farm tractors registration figures

Kamyon Pazarının Analizi (x1000) AYA > 5 Ton Truck Market Analysis (x1000) GVW > 5 Ton



Kamyon Pazarı (x1000) AYA > 5 Ton Truck Market (x1000) GVW > 5 Ton

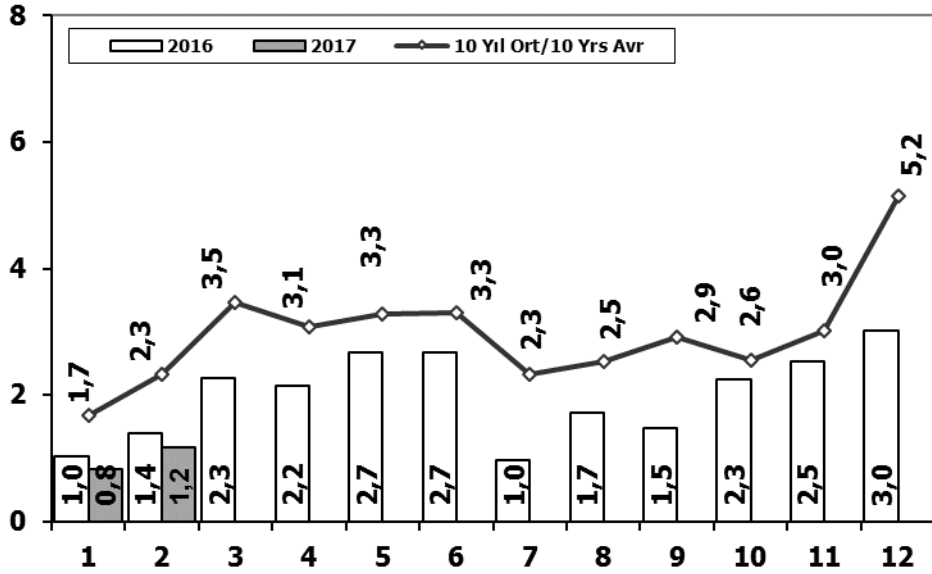


	1	2	3	4	5	6	7	8	9	10	11	12	2 Ay/Mo	Total
2007	1.554	2.055	3.065	2.940	2.865	2.613	2.372	3.145	2.988	2.886	3.258	4.444	3.609	34.185
2008	1.797	2.309	2.621	2.578	2.459	2.526	2.067	2.377	2.390	1.790	1.512	1.834	4.106	26.260
2009	771	759	1.034	1.342	1.355	1.651	1.156	1.205	1.780	866	981	2.015	1.530	14.915
2010	777	968	1.772	1.807	1.966	2.205	2.093	2.446	2.444	3.071	3.136	5.677	1.745	28.362
2011	2.552	3.292	4.418	3.754	3.803	3.749	1.996	2.478	3.081	2.774	3.108	5.787	5.844	40.792
2012	1.375	2.159	3.595	2.697	3.321	3.250	2.450	2.277	2.991	2.244	3.006	5.000	3.534	34.365
2013	1.077	1.931	3.127	2.720	3.145	2.951	2.411	1.845	2.554	1.801	3.173	5.025	3.008	31.760
2014	1.117	1.949	2.818	3.092	3.405	3.438	2.083	2.390	3.281	2.494	3.028	6.313	3.066	35.408
2015	1.705	2.841	5.270	3.208	3.190	3.824	2.463	1.798	2.244	1.848	2.902	6.540	4.546	37.833
2016	718	1.154	1.984	1.835	2.420	2.358	830	1.529	1.204	1.962	2.123	2.640	1.872	20.757
2017	609	964											1.573	1.573

Aylar / Months	10 Yil Ort. 10 Yrs Avr. (x1000)	2017 (x1000)	%
1	1,3	0,6	-54,7
2	1,9	1,0	-50,4
Total	3,6	1,6	-56,3

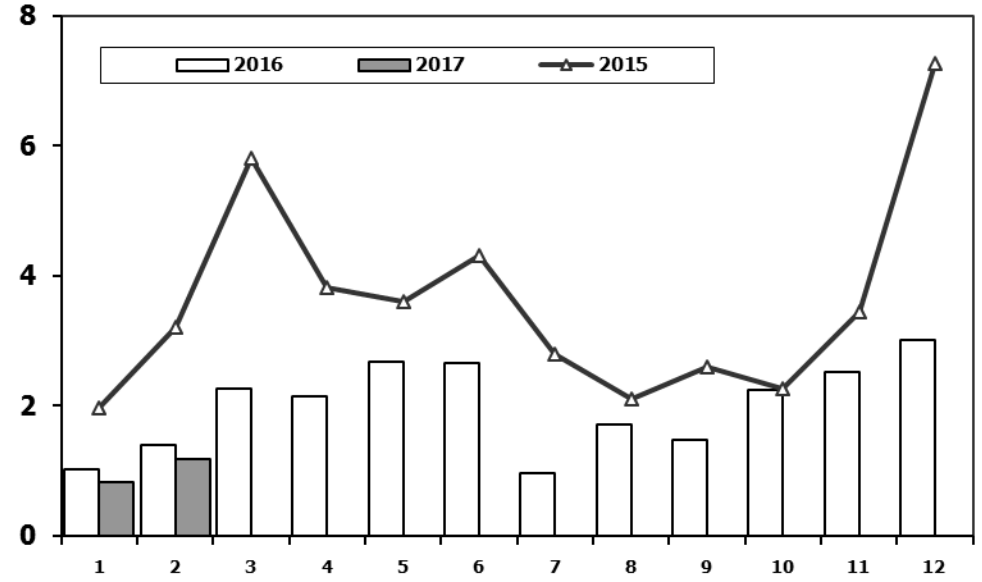
Ağır Ticari Araç Pazarının Analizi (x1000)

HCV Market Analysis (x1000)



Ağır Ticari Araç Pazarı (x1000)

HCV Market (x1000)

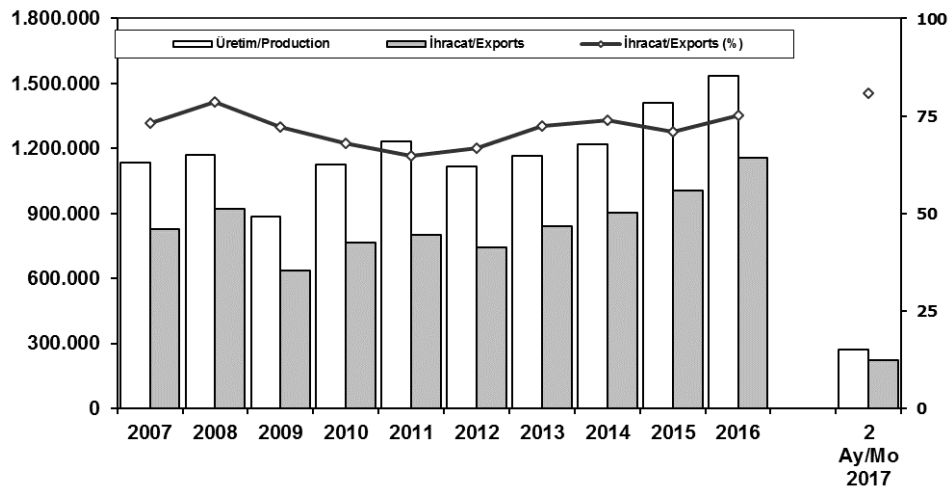


Aylar / Months	10 Yıl Ort. 10 Yrs Avr. (x1000)	2017 (x1000)	%
1	1,7	0,8	-50,5
2	2,3	1,2	-49,6
Total	4,0	2,0	-50,0

	1	2	3	4	5	6	7	8	9	10	11	12	2 Ay/Mo	Total
2007	1.833	2.518	3.598	3.267	3.317	2.987	2.627	3.613	3.497	3.333	3.704	5.150	4.351	39.444
2008	2.265	2.870	3.165	3.266	3.029	3.069	2.536	2.922	2.897	2.263	1.899	2.340	5.135	32.521
2009	1.025	1.104	1.420	1.786	1.696	2.035	1.401	1.483	2.006	1.084	1.240	2.463	2.129	18.743
2010	955	1.141	2.059	2.133	2.251	2.494	2.373	2.881	2.787	3.376	3.444	6.365	2.096	32.259
2011	2.766	3.685	4.930	4.376	4.447	4.290	2.320	2.972	3.514	3.219	3.538	6.371	6.451	46.428
2012	1.674	2.503	4.073	3.065	3.957	3.714	2.818	2.700	3.568	2.739	3.335	5.713	4.177	39.859
2013	1.617	2.624	3.914	3.440	3.953	3.675	3.130	2.340	3.074	2.385	3.716	5.878	4.241	39.746
2014	1.555	2.287	3.383	3.461	3.788	3.789	2.299	2.640	3.649	2.686	3.316	6.952	3.842	39.805
2015	1.961	3.202	5.819	3.829	3.603	4.305	2.789	2.106	2.597	2.265	3.442	7.259	5.163	43.177
2016	1.027	1.398	2.266	2.154	2.672	2.663	972	1.713	1.475	2.251	2.530	3.016	2.425	24.137
2017	825	1.176											2.001	2.001

İhracat/Üretim (2007-2017) (Traktör dahil)

Exports/Production (2007-2017) (Including F.Tractor)



Taşıt Araçları İhracatı (2015-2017)

Motor Vehicle Exports (2015-2017)

SEKTÖR/SECTOR	2015	2016	2016	2017	2017/2016 (%)
			2 Ay-2 Mo		
OTOMOBİL/ P.Cars	604.683	745.709	98.770	158.483	60
TİCARİ ARAÇLAR / CV	387.652	395.673	68.727	60.951	-11
* Kamyonet/Pick-Up	341.834	347.949	65.739	53.049	-19
* Minibüs/Minibus	38.255	34.790	1.328	6.265	372
* Kamyon/Truck	1.408	5.521	493	563	14
* Midibüs/Midibus	447	915	76	77	1
* Otobüs/Bus	5.708	6.498	1.091	997	-9
TAŞIT ARAÇLARI /MV TOTAL	992.335	1.141.382	167.497	219.434	31
TRAKTÖR/F.TRACTOR	14.932	13.651	2.462	1.874	-24
TOTAL	1.007.267	1.155.033	169.959	221.308	30

	2007	2008	2009	2010	2011	2012	2013	2014	2015	2016	2 Ay/Mo 2017
Üretim/Production	1.132.951	1.171.917	884.466	1.124.982	1.234.637	1.115.233	1.166.043	1.218.848	1.410.034	1.536.673	273.978
İhracat/Exports	829.879	920.763	637.855	763.670	801.112	745.354	843.467	902.194	1.007.267	1.155.033	221.308
İhracat/Exports (%)	73	79	72	68	65	67	72	74	71	75	81

Otomotiv Ana ve Yan Sanayii İhracatı (ABD \$)

CBU and CKD Exports - \$

Sektör / Sector	2013	2014	2015	2016	2016	2017	2017/2016 (%)
					Ocak-Şubat / January-February		
Total Component Exports	9.065.017.539	9.504.013.791	8.641.977.425	8.947.915.672	1.414.640.428	1.476.109.522	4%
İç ve Dış Lastik / Tyres	1.130.005.891,78	1.126.709.610,14	960.550.807	978.284.060	150.110.503	162.116.660	8%
Emniyet Camı / Safety Glasses	135.230.309,67	143.208.298,99	124.564.841	119.569.736	21.011.472	20.080.316	-4%
Motor (Engine)	319.294.885,46	171.893.752,32	221.897.271	370.561.589	46.999.368	72.779.726	55%
Akümülatör / Batteries	306.451.449,47	289.101.198,21	220.462.827	224.590.660	32.368.163	33.188.023	3%
Diğer Aksam ve Parça / Spare Parts&Components	7.174.035.002,35	7.773.100.931,83	7.114.501.679	7.254.909.627	1.164.150.922	1.187.944.798	2%
Total Vehicle Exports	12.491.591.365	13.259.499.977	12.977.346.859	15.302.074.705	2.159.568.543	2.857.970.925	32%
Otobüs / Bus	937.790.962,87	985.983.007,01	1.023.556.746	1.190.475.986	193.410.545	172.089.446	-11%
Midibüs-Minibüs / Minibus- Minibus	147.769.644,17	97.685.509,12	130.195.838	238.911.957	22.280.704	34.040.424	53%
Otomobil (P. Cars)	6.855.475.589,83	7.258.361.005,24	6.881.867.274	8.336.946.503	958.093.217	1.843.520.357	92%
Kamyon-Kamyonet/HCV-LCV	3.918.798.755,31	4.201.760.813,55	4.264.018.829	4.616.562.139	822.323.267	705.968.915	-14%
Römork ve Yarı Römork/Trailer-Semi Trailer	218.385.731,69	252.354.014,20	252.397.167	265.323.711	71.135.362	30.555.969	-57%
Çekici/Truck-Tractor	77.907.406,95	38.396.524,81	48.108.959	316.355.575	31.900.226	29.776.388	-7%
Tarım Traktörü/Farm Tractor	335.463.274,61	424.959.103,39	377.202.046	337.498.834	60.425.222	42.019.426	-30%
Toplam/Total	21.556.608.904	22.763.513.769	21.619.324.284	24.249.990.377	3.574.208.971	4.334.080.447	21%

Kaynak: Uludağ İhracatçı Birlikleri . UİB tarafından OSD için özel olarak analiz edilen Otomotiv İhracatı kapsamında; UİB Türkiye Genel Otomotiv Endüstrisi sınıflandırmasına kıyasla "Römork ve Yarı Römork", "Tarım Traktörü" verileri dahil edilmekte; "Kullanılmış Araçlar", "İki Tekerlekli Taşıtlar", "Demiryolu Taşıtları" hariç tutulmaktadır.

Source: Uludağ Exporters Association - Special Analyze for OSD

Compared to Turkish General Automotive Industry classification, this special analyze includes; farms tractors, trailers and semi-trailers, does not include; used vehicles, two-wheeled vehicles and railway vehicles.

Firma Bazında İhracat (Adet)

Export Of Member Companies (Unit)

FİRMALAR Companies	2015	2016	Ocak-Şubat 2 Months	
			2016	2017
			TOFAŞ	173.743
OYAK RENAULT	270.299	270.088	35.326	47.894
FORD OTOSAN	252.571	256.706	45.672	45.982
TOYOTA	81.962	109.184	10.407	41.401
HYUNDAI ASSAN	201.276	207.234	36.650	32.224
TÜRK TRAKTÖR	14.122	12.625	2.322	1.775
M. BENZ TÜRK	4.252	8.307	1.150	1.040
HONDA TÜRKİYE	2.220	2.914	149	686
MAN TÜRKİYE	1.493	1.717	362	328
KARSAN	3.067	3.629	311	119
HATTAT TARIM	810	1.026	140	99
OTOKAR	720	833	46	82
A.I.O.S.	291	673	30	62
TEMSA GLOBAL	441	653	44	34
GENEL TOPLAM	1.007.267	1.155.033	169.959	221.308

Kaynak: OSD

Sektör Bazında İhracat (1000 \$)

Exports on Sectorial Basis

SEKTÖRLER (1.000 \$)	ŞUBAT				OCAK - ŞUBAT				SON 12 AYLIK			
	2016	2017	Değişim ('17/'16)	Pay(17)	2016	2017	Değişim ('17/'16)	Pay(17)	2016	2017	Değişim ('17/'16)	Pay(17)
Otomotiv Endüstrisi	1.983.151	2.230.199	12,5	19,7	3.495.450	4.299.425	23,0	19,0	21.215.790	24.691.954	16,4	17,2
Kimyevi Maddeler ve Mamulleri	1.136.929	1.348.439	18,6	11,9	2.134.732	2.581.962	21,0	11,4	15.158.228	14.385.460	-5,1	10,0
Hazır giyim ve Konfeksiyon	1.417.244	1.288.928	-9,1	11,4	2.734.971	2.540.817	-7,1	11,3	17.042.492	16.764.600	-1,6	11,7
Çelik	744.873	949.921	27,5	8,4	1.371.805	1.801.411	31,3	8,0	9.461.712	9.506.014	0,5	6,6
Elektrik Elektronik ve Hizmet	803.501	702.302	-12,6	6,2	1.430.146	1.307.323	-8,6	5,8	10.330.725	9.852.045	-4,6	6,9
Tekstil ve Hammaddeleri	632.880	638.890	0,9	5,7	1.229.251	1.254.563	2,1	5,6	7.919.206	7.893.958	-0,3	5,5
Hububat, Bakliyat, Yağlı Tohumlar ve Mamulleri	562.244	557.048	-0,9	4,9	1.022.861	1.081.591	5,7	4,8	6.091.862	6.418.080	5,4	4,5
Demir ve Demir Dışı Metaller	502.326	502.190	0,0	4,4	926.160	969.114	4,6	4,3	6.196.115	5.989.383	-3,3	4,2
Makine ve Aksamları	439.491	435.783	-0,8	3,9	815.409	825.860	1,3	3,7	5.442.017	5.314.089	-2,4	3,7
Mobilya, Kağıt ve Orman Ürünleri	345.268	333.360	-3,4	3,0	617.437	645.761	4,6	2,9	3.933.583	4.129.813	5,0	2,9
TOPLAM	10.746.204	11.296.167	5,1	100,0	20.292.729	22.573.812	11,2	100,0	139.597.973	143.218.045	2,6	100,0

Kaynak: TİM

Şubat ayı ihracat verilerine, "İhracatçı Birlikleri Kaydından Muaf İhracat" verisi dahil değildir.

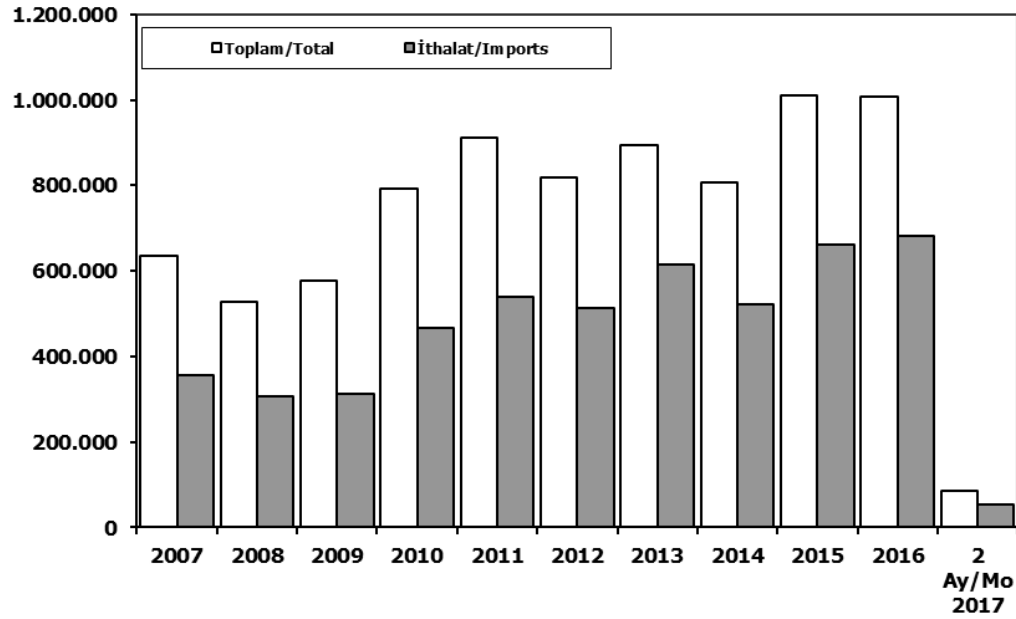
Source: TİM

Exportation data for February does not include "Exempted Exports from the Exporters' Union Registration".

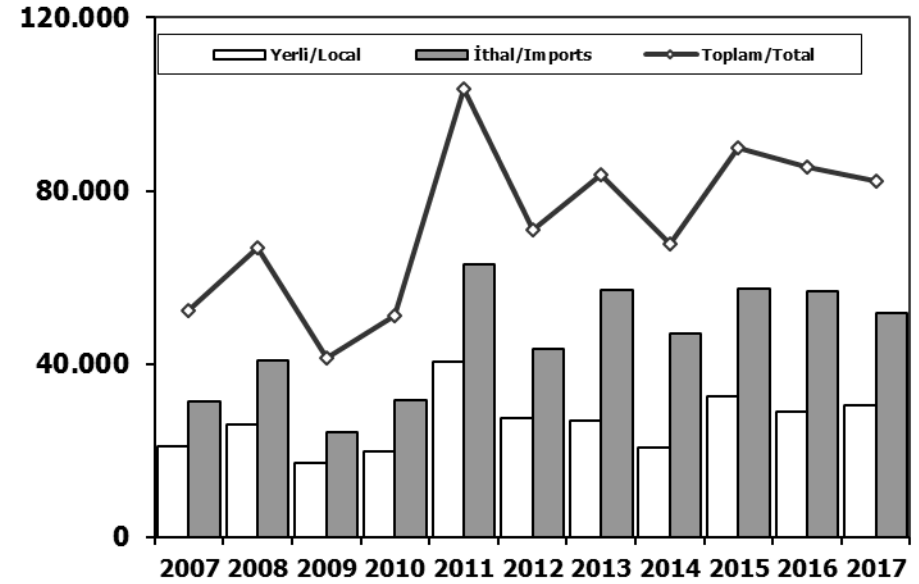
First 3 Sectors:

- 1- Automotive Industry
- 2- Ready Wear and Confection
- 3-Chemical Articles and Products

Toplam Pazar (Otomobil+T.Araç) Total Market (P.Cars+C.V)



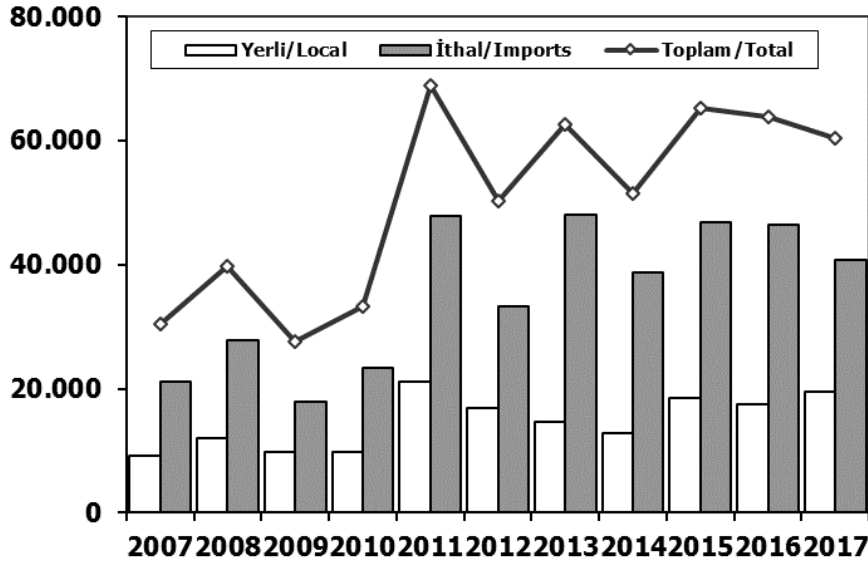
Hafif Araçlar Pazarı (2007-2017 Ocak-Şubat) LV Market (2007-2017 January-February)



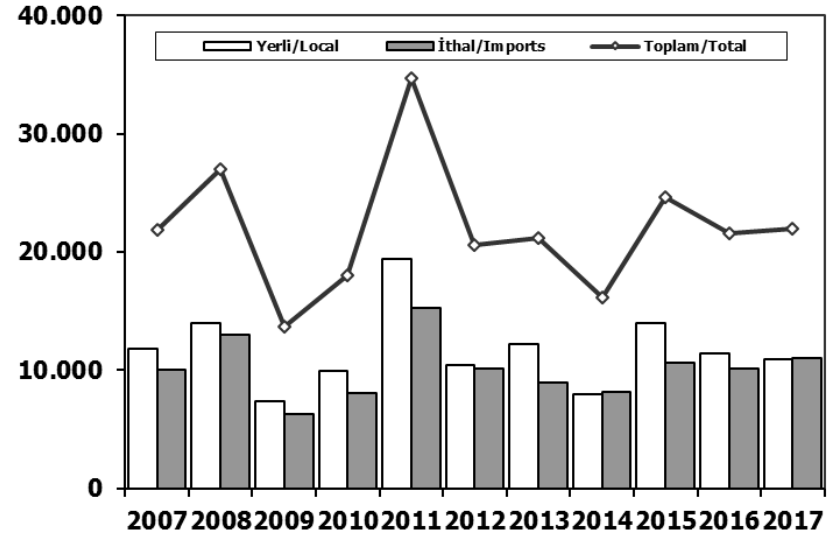
	2007	2008	2009	2010	2011	2012	2013	2014	2015	2016	2 Ay/Mo 2016	2 Ay/Mo 2017
Toplam/Total	634.206	526.544	575.869	793.172	910.867	817.620	893.124	807.486	1.011.194	1.007.857	87.963	84.289
İthalat/Imports	355.752	306.087	313.921	465.408	538.532	511.694	615.609	522.842	660.045	681.308	57.790	52.494
İthalat/Imports (%)	56	58	55	59	59	63	69	65	65	68	66	62

	2007	2008	2009	2010	2011	2012	2013	2014	2015	2016	2017
Yerli/Local	21.077	26.031	17.103	19.756	40.483	27.386	26.842	20.779	32.531	28.901	30.476
İthal/Imports	31.224	40.747	24.245	31.511	63.072	43.483	56.988	46.912	57.415	56.637	51.812
Toplam/Total	52.301	66.778	41.348	51.267	103.555	70.869	83.830	67.691	89.946	85.538	82.288
İthalat/Imports (%)	60	61	59	61	61	61	68	69	64	66	63

Otomobil Pazarı (2007-2017 Ocak-Şubat) P.Cars Market (2007-2017 January-February)

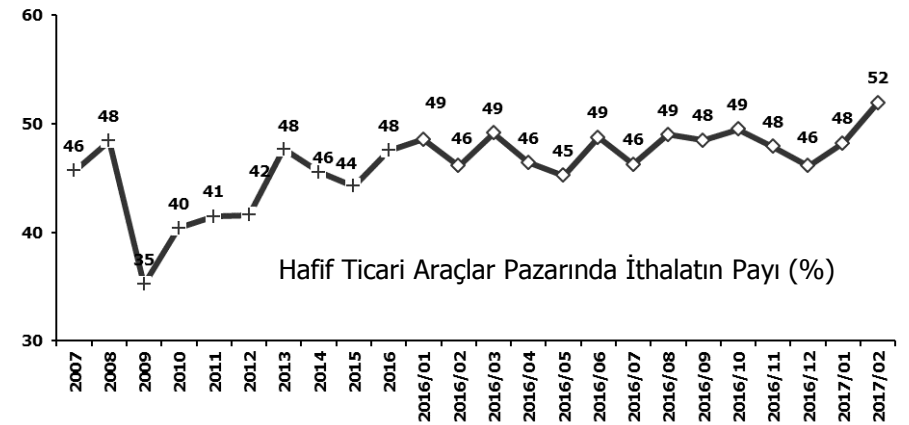
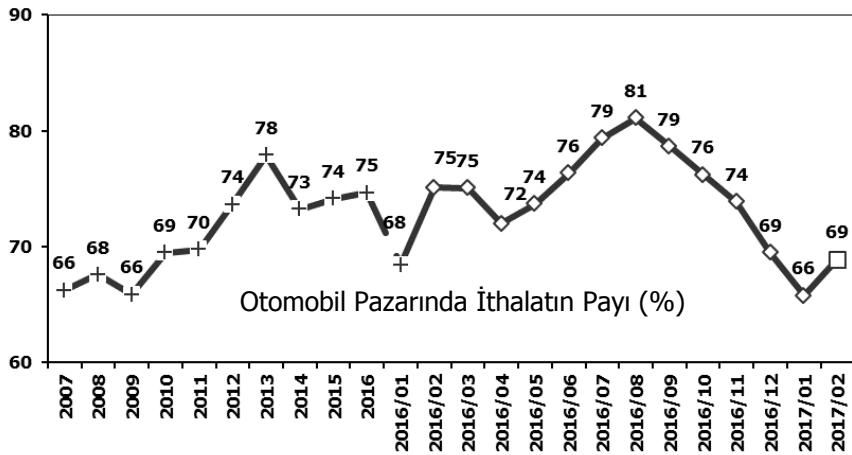


Hafif Ticari Araçlar Pazarı (2007-2017 Ocak-Şubat) Light Commercial Vehicle Market (2007-2017 January-February)

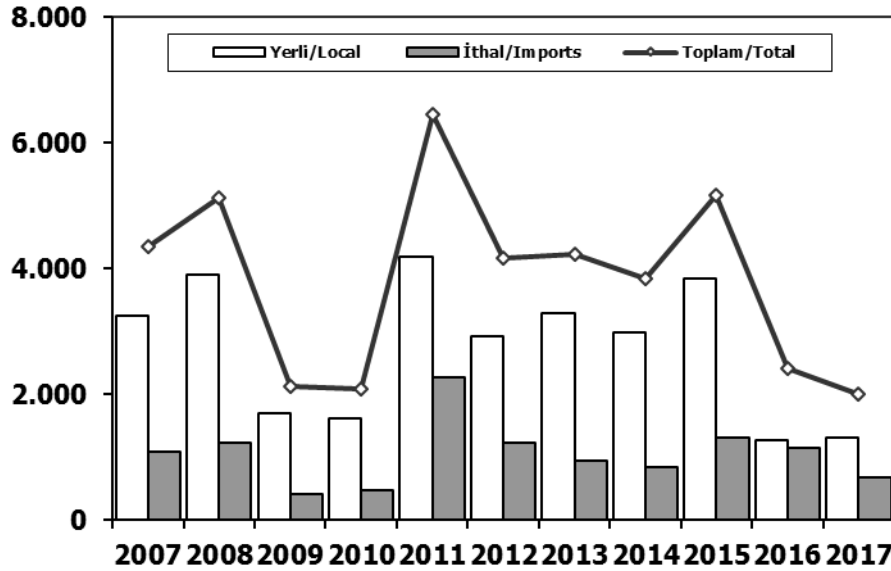


	2007	2008	2009	2010	2011	2012	2013	2014	2015	2016	2017
Yerli/Local	9.266	12.050	9.687	9.828	21.103	16.911	14.658	12.805	18.514	17.491	19.571
İthal/Imports	21.132	27.734	17.978	23.417	47.769	33.355	47.991	38.730	46.801	46.455	40.776
Toplam/Total	30.398	39.784	27.665	33.245	68.872	50.266	62.649	51.535	65.315	63.946	60.347
İthalat/Imports (%)	70	70	65	70	69	66	77	75	72	73	68

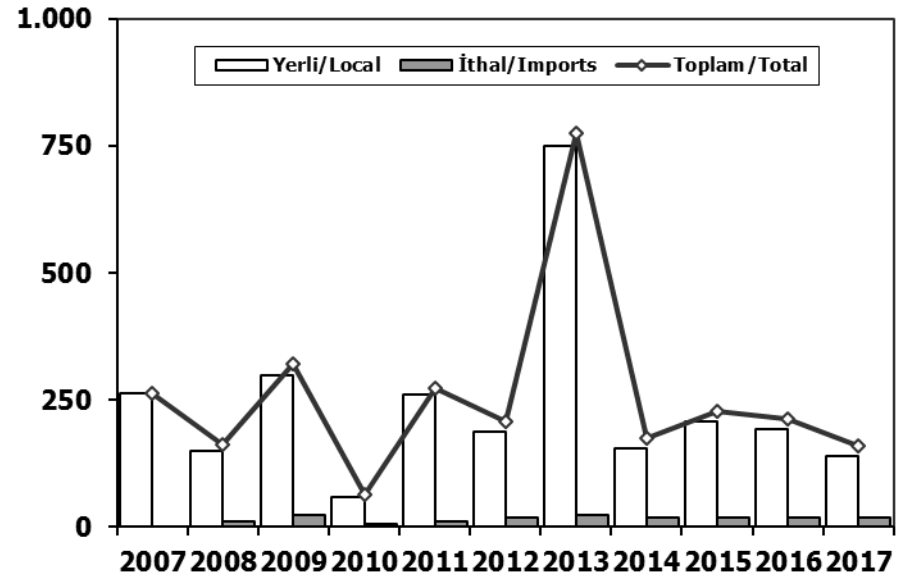
	2007	2008	2009	2010	2011	2012	2013	2014	2015	2016	2017
Yerli/Local	11.811	13.981	7.416	9.928	19.380	10.475	12.184	7.974	14.017	11.410	10.905
İthal/Imports	10.092	13.013	6.267	8.094	15.303	10.128	8.997	8.182	10.614	10.182	11.036
Toplam/Total	21.903	26.994	13.683	18.022	34.683	20.603	21.181	16.156	24.631	21.592	21.941
İthalat/Imports (%)	46	48	46	45	44	49	42	51	43	47	50



Ağır Ticari Araçlar Pazarı (2007-2017 Ocak-Şubat) HCV Market (2007-2017 January-February)



Otobüs Pazarı (2007-2017 Ocak-Şubat) Bus Market (2007-2017 January-February)

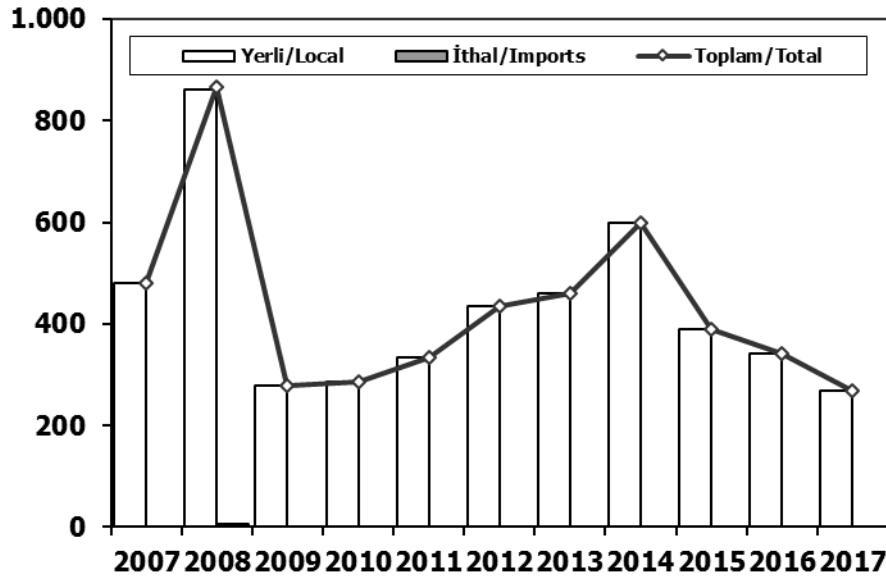


	2007	2008	2009	2010	2011	2012	2013	2014	2015	2016	2017
Yerli/Local	3.257	3.906	1.712	1.622	4.183	2.935	3.286	2.988	3.841	1.272	1.319
İthal/Imports	1.094	1.229	417	474	2.268	1.242	955	854	1.322	1.153	682
Toplam/Total	4.351	5.135	2.129	2.096	6.451	4.177	4.241	3.842	5.163	2.425	2.001
İthalat/Imports (%)	25	24	20	23	35	30	23	22	24	48	34

	2007	2008	2009	2010	2011	2012	2013	2014	2015	2016	2017
Yerli/Local	263	150	298	58	262	188	749	156	207	192	139
İthal/Imports	0	12	23	7	12	19	25	20	20	20	20
Toplam/Total	263	162	321	65	274	207	774	176	227	212	159
İthalat/Imports (%)	0	7	7	11	4	9	3	11	9	9	13

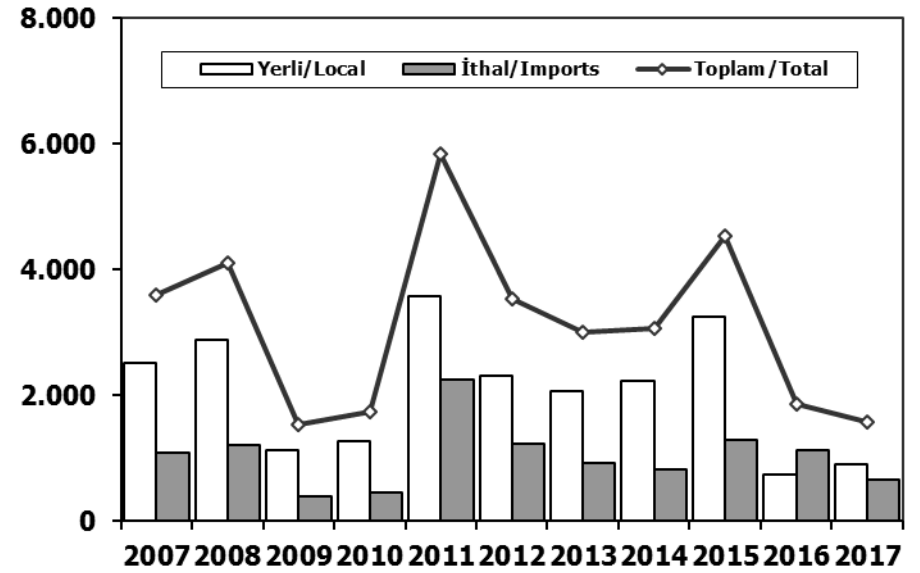
Midibüs Pazarı (2007-2017 Ocak-Şubat) (7-9 mt / 25-35 Kişilik)

Midibus Market (2007-2017 January-February) (7-9 mt / 25-35 Passengers)



Kamyon Pazarı (2007-2017 Ocak-Şubat)

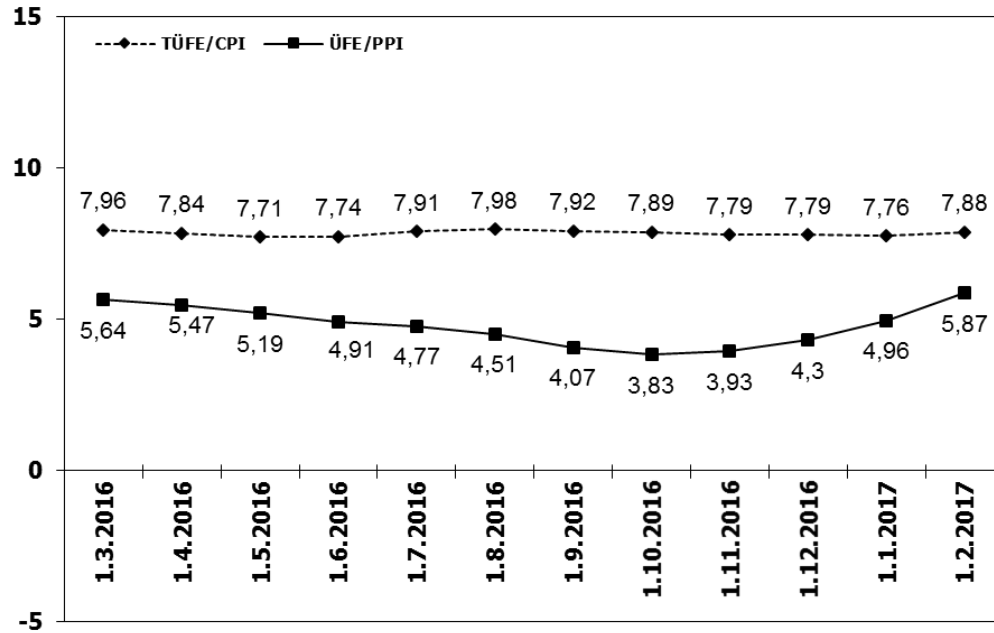
Truck Market (2007-2017 January-February)



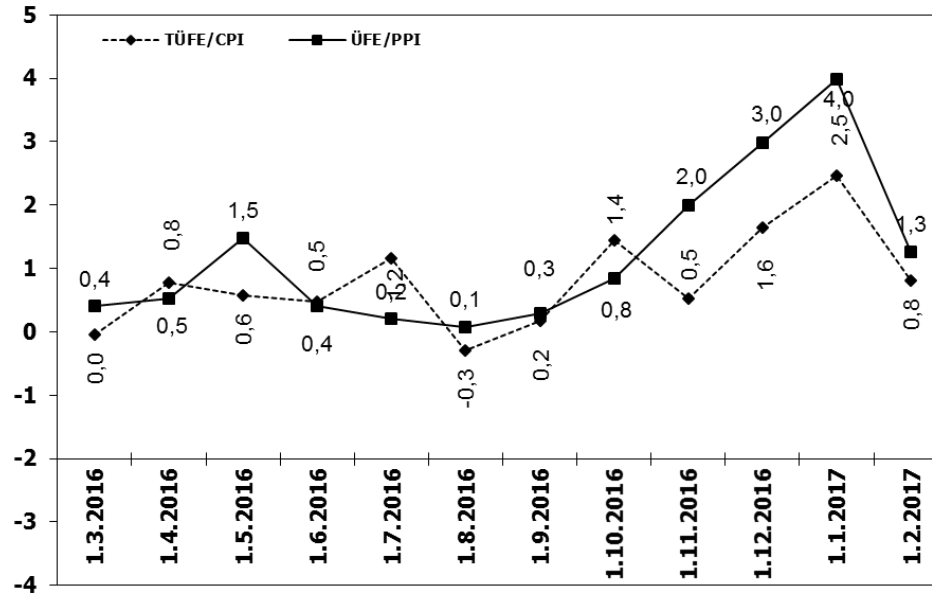
	2007	2008	2009	2010	2011	2012	2013	2014	2015	2016	2017
Yerli/Local	479	861	278	286	333	436	459	600	390	341	269
İthal/Imports	0	6	0	0	0	0	0	0	0	0	0
Toplam/Total	479	867	278	286	333	436	459	600	390	341	269
İthalat/Imports (%)	0	1	0	0	0	0	0	0	0	0	0

	2007	2008	2009	2010	2011	2012	2013	2014	2015	2016	2017
Yerli/Local	2,515	2,895	1,136	1,278	3,588	2,311	2,078	2,232	3,244	739	911
İthal/Imports	1,094	1,211	394	467	2,256	1,223	930	834	1,302	1,133	662
Toplam/Total	3,609	4,106	1,530	1,745	5,844	3,534	3,008	3,066	4,546	1,872	1,573
İthalat/Imports (%)	30	29	26	27	39	35	31	27	29	61	42

TÜFE ve ÜFE'nin 12 Aylık Ort. Değişimi (%) CPI and PPI 12 Months Avr. Changes (%)



TÜFE ve ÜFE'nin Aylık Değişimi (%) CPI and PPI Monthly Changes (%)



2017 Yılı İthal Hafif Araç Satışları 2017 Light Vehicles Import Sales

2017 YILI İTHAL OTOMOBİL SATIŞLARI / P.Cars Import 2017

	2016 TOPLAMI 2016 Total	1	2	3	4	5	6	7	8	9	10	11	12	2017 TOPLAMI 2017 Total
VOLKSWAGEN	101.761	3.059	4.903											7.962
DACIA	42.109	1.471	2.303											3.774
OPEL	55.471	1.577	1.652											3.229
HYUNDAI	26.463	1.413	1.393											2.806
NISSAN	30.513	1.154	1.519											2.673
PEUGEOT	25.440	637	1.884											2.521
FORD	33.453	1.175	1.199											2.374
RENAULT	42.422	844	1.462											2.306
SKODA	28.876	925	1.225											2.150
MERCEDES-BENZ	32.666	499	1.078											1.577
BMW	27.166	570	900											1.470
AUDI	22.005	623	702											1.327
CITROEN	17.041	513	761											1.276
SEAT	20.637	536	623											1.159
KIA	14.398	426	481											907
TOYOTA	11.513	433	413											852
HONDA	8.714	206	255											461
VOLVO	4.100	153	213											366
FIAT	3.103	106	187											293
SUZUKI	3.931	73	143											222
JEEP	2.192	111	104											215
MINI	1.688	55	81											136
MAZDA	1.427	54	76											130
PORSCHE	827	66	61											127
SUBARU	1.584	67	40											107
LAND ROVER	2.108	34	72											106
MITSUBISHI	709	28	43											71
ALFA ROMEO	634	17	43											60
SSANGYONG	507	10	20											30
LEXUS	64	16	3											19
INFINITI	120	6	12											18
JAGUAR	481	6	10											16
DS	400	9	0											9
SMART	192	2	7											9
MASERATI	72	2	7											9
ASTON MARTIN	29	1	2											3
BENTLEY	9	1	2											3
FERRARI	18	0	1											1
CHERY	144	0	0											0
PROTON	51	0	0											0
LAMBORGHINI	7	0	0											0
TATA	0	0	0											0
SEELY	0	0	0											0
LANCIA	0	0	0											0
TOPLAM	565.045	16.896	23.880	0	0	0	0	0	0	0	0	0	0	40.776

2017 YILI İTHAL HAFİF TİCARİ ARAÇ SATIŞLARI / Light Commercial Vehicles Import 2017

	2016 TOPLAMI 2016 Total	1	2	3	4	5	6	7	8	9	10	11	12	2017 TOPLAMI 2017 Total
VOLKSWAGEN	32.772	1.255	1.599											2.854
RENAULT	15.091	519	718											1.237
CITROEN	6.884	438	669											1.107
MERCEDES-BENZ	8.070	343	496											839
TOYOTA	5.645	356	451											807
FIAT	5.885	257	448											705
DACIA	5.422	235	348											583
FORD	4.878	250	270											520
PEUGEOT	8.402	157	351											508
KIA	3.952	193	240											433
NISSAN	1.540	167	266											433
MITSUBISHI	3.533	173	213											386
HYUNDAI	2.244	134	174											308
IVECO	2.175	146	133											279
SUZU	1.055	12	12											24
SSANGYONG	254	9	4											13
TATA	9	0	0											0
TOPLAM	107.811	4.644	6.392	0	0	0	0	0	0	0	0	0	0	11.036