



OTOMOTİV SANAYİİ DERNEĞİ  
AUTOMOTIVE MANUFACTURERS ASSOCIATION

# AYLIK RAPOR

## Automotive Industry Monthly Report

Ocak / January 2018

- **Üretim/Production**
- **Satış/Sales**
- **İthalat/Imports**
- **İhracat/Exports**

OSD "OICA" Üyesidir



OSD is a Member of "OICA"

## 2018 Ocak Ayı Özeti / 2018 January Summary

		OCAK / JANUARY			SON 12 AYLIK / YoY		
		2017	2018	2018/2017 (%)	2017	2018	2018/2017 (%)
<b>Üretim/Production</b>	<b>Toplam/Total</b>	128.120	124.347	-3	1.516.403	1.691.958	12
	<b>Otomobil/P.Cars</b>	93.682	85.368	-9	986.365	1.134.592	15
<b>Pazar/Market</b>	<b>Toplam/Total</b>	36.146	36.053	0	1.010.263	980.184	-3
	<b>Otomobil/P.Cars</b>	25.689	26.611	4	759.269	723.681	-5
<b>İthalat/Import</b>	<b>Toplam/Total</b>	21.826	21.581	-1	682.142	624.164	-8
	<b>Otomobil/P.Cars</b>	16.896	16.832	0	565.958	505.904	-11
<b>İhracat/Export</b>	<b>Toplam/Total</b>	103.370	94.332	-9	1.175.952	1.323.756	13
	<b>Otomobil/P.Cars</b>	76.492	73.408	-4	783.580	918.270	17
<b>İhracat/Export (\$)</b>	<b>Toplam/Total **</b>	2.082.009.335	2.334.025.335	12	24.784.019.694	29.238.548.983	18
	<b>Otomobil/P.Cars</b>	912.789.459	951.648.461	4	8.873.582.741	11.829.635.095	33

PARAMETRELER / PARAMETERS	OCAK / JANUARY			SON 12 AYLIK / YoY		
	2017	2018	2018/2017 (%)	2017	2018	2018/2017 (%)
<b>ÜFE/PPI</b>	3,98	0,99	-	4,96	15,66	-
<b>TÜFE/CPI</b>	2,46	1,02	-	7,76	11,23	-
<b>Sanayi Endeksi/Industry Index</b>	3,87	1,63	-	6,34	17,34	-
<b>\$ (*)</b>	3,6580	3,7570	3	3,0643	3,9387	29
<b>EURO (*)</b>	3,8795	4,6019	19	3,3738	4,4865	33
<b>Japon Yeni (*)</b>	3,1531	3,3807	7	2,8030	3,4959	25

(\* ) Ortalama Değerler / Average Values

(\*\*) Toplam Sanayi / Total Industry Including Components

*Raporda yer alan üretim adetleri yalnızca OSD üyelerinin verilerini göstermektedir.  
Production units in this report only show the data of OSD members.*

## 2017/2018 Yılları Üretim

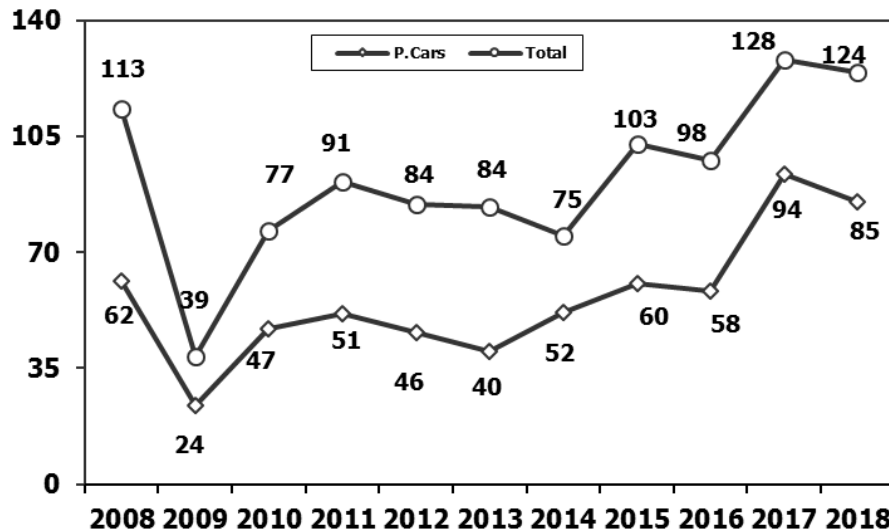
2017/2018 Production

K.KAMYON : AYA 3.5-12 Ton (L.Truck:GVW 3.5-12 Ton)

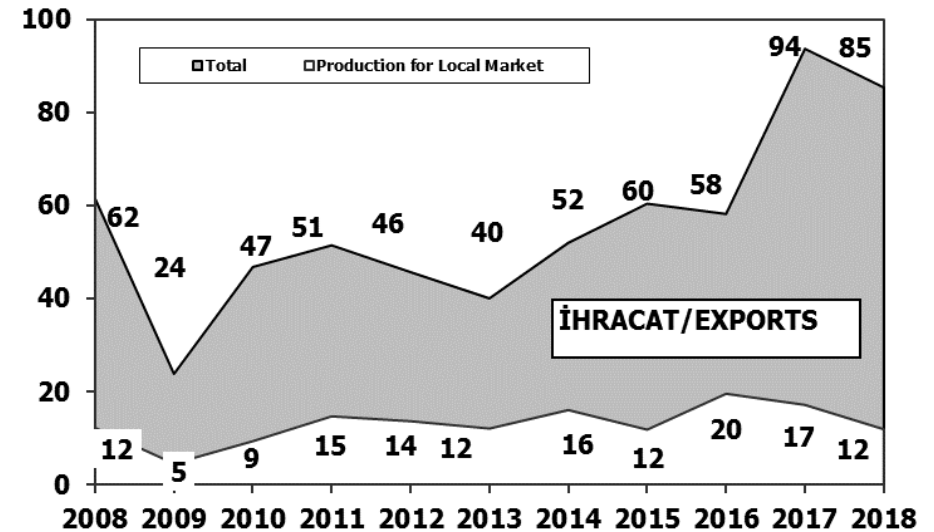
B.KAMYON : AYA 12 Ton'dan Büyük (M.Truck:GVW 12 Ton And Up)

ARAÇ TİPLERİ	OCAK AYI ÜRETİMİ January Production		DEĞİŞİM % Percent Change %
	2017	2018	OCAK January
<b>OTOMOBİL - Pass.Car</b>	<b>93.682</b>	<b>85.368</b>	<b>-9</b>
<b>TİCARİ ARAÇLAR - Commercial Vehicles</b>	<b>34.438</b>	<b>38.979</b>	<b>13</b>
* B. KAMYON - H. Truck	741	1.871	152
* K. KAMYON - L. Truck	183	268	46
* KAMYONET - Pick Up	28.948	32.222	11
* OTOBÜS - Bus	783	619	-21
* MİNİBÜS - Minibus	3.582	3.703	3
* MİDİBÜS - Midibus	201	296	47
<b>TAŞIT ARAÇLARI TOPLAM - MV Total</b>	<b>128.120</b>	<b>124.347</b>	<b>-3</b>
<b>TRAKTÖR - F.Tractor</b>	<b>3.620</b>	<b>4.564</b>	<b>26</b>
<b>GENEL TOPLAM - Grand Total</b>	<b>131.740</b>	<b>128.911</b>	<b>-2</b>

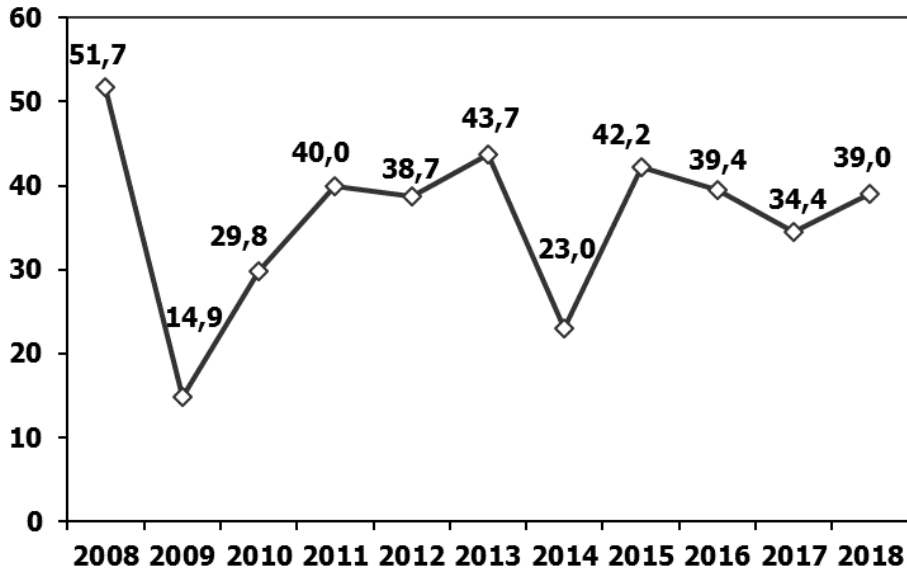
**Toplam Üretim ve Otomobil Üretimi** (x1000) (Ocak)  
Total & P.Cars Production (x1000) (January)



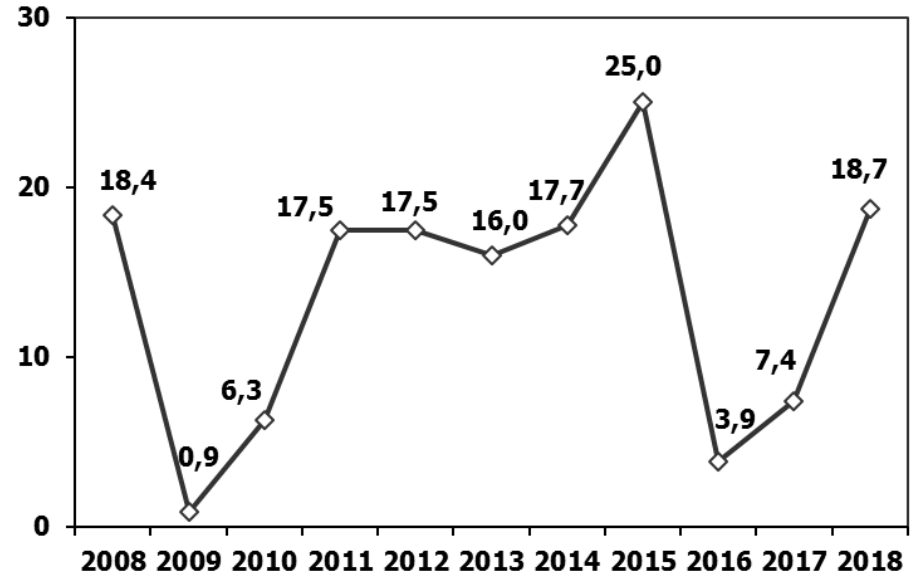
**Otomobil Üretimi ve İhracat** (x1000) (Ocak)  
P.Cars Production & Exports (x1000) (January)



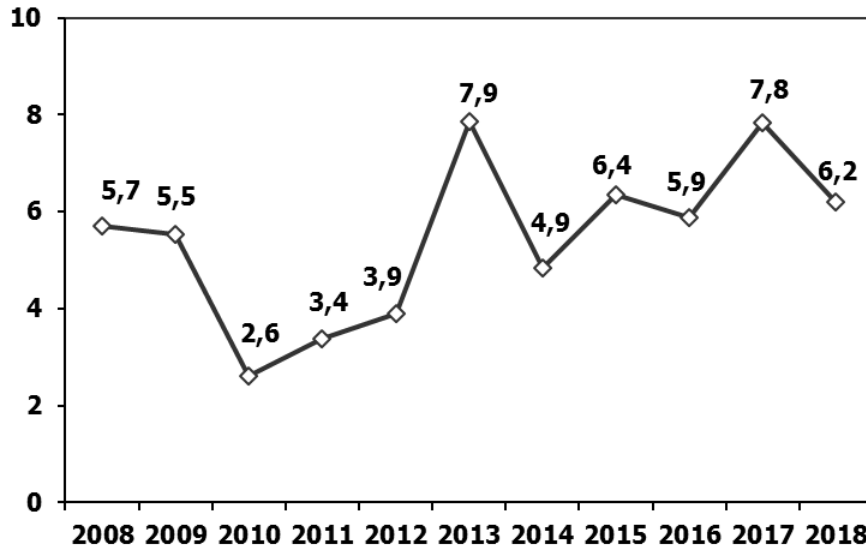
**Ticari Araç Üretimi** (x1000) (Ocak)  
Commercial Vehicle Production (x1000) (January)



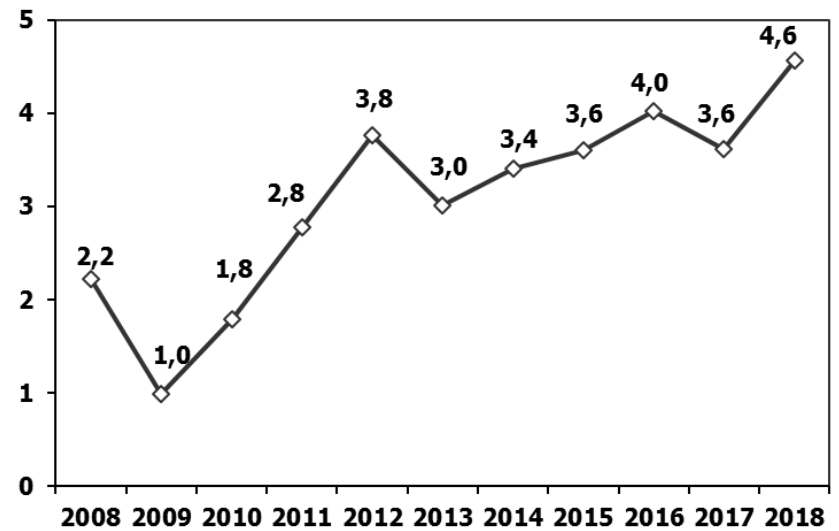
(AYA >12 Ton) **Büyük Kamyon Üretimi** (x100) (Ocak)  
(GVW >12 Ton) Heavy Truck Production (x100) (January)



**Otobüs Üretimi** (x100) (Ocak)  
Bus Production (x100) (January)

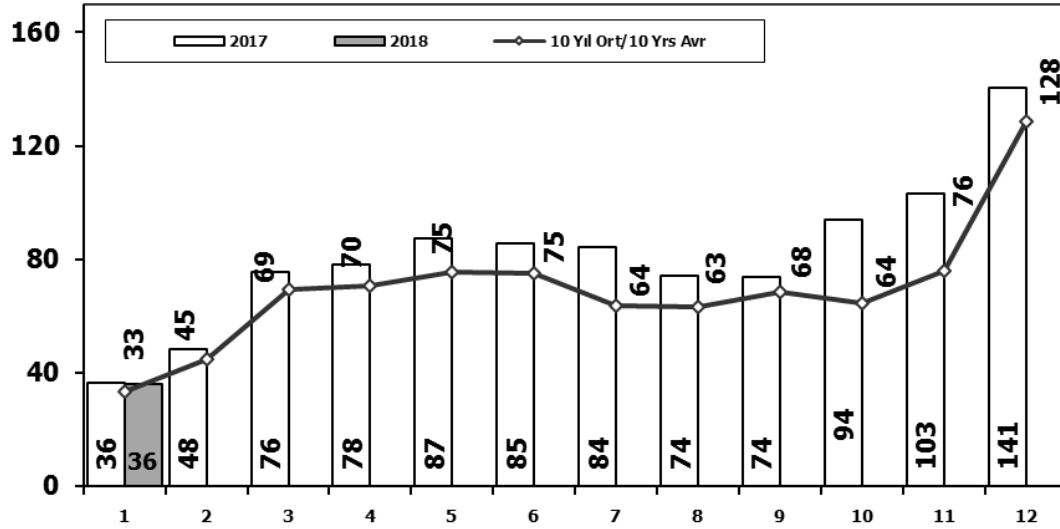


**Traktör Üretimi** (x1000) (Ocak)  
F. Tractor Production (x1000) (January)



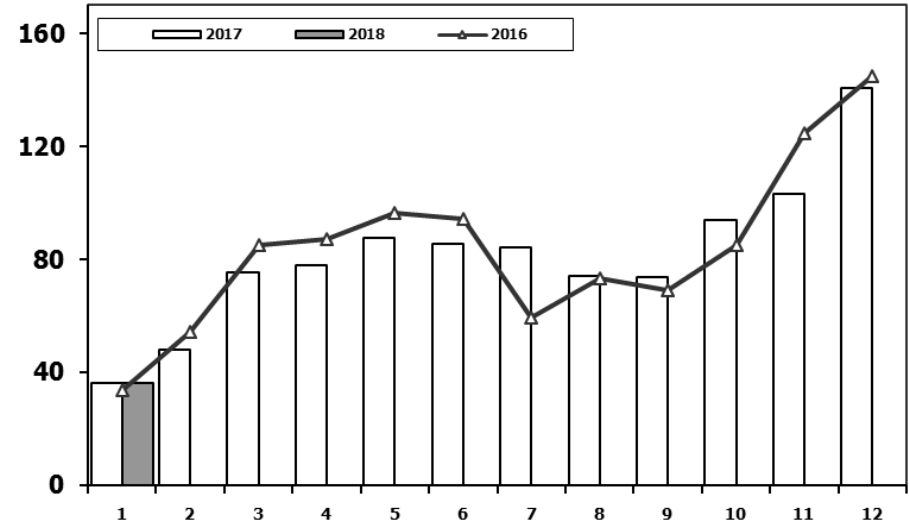
## Toplam Pazarın Analizi (x1000)

Total Market Analysis (x1000)



## Toplam Pazar (x1000)

Total Market (x1000)

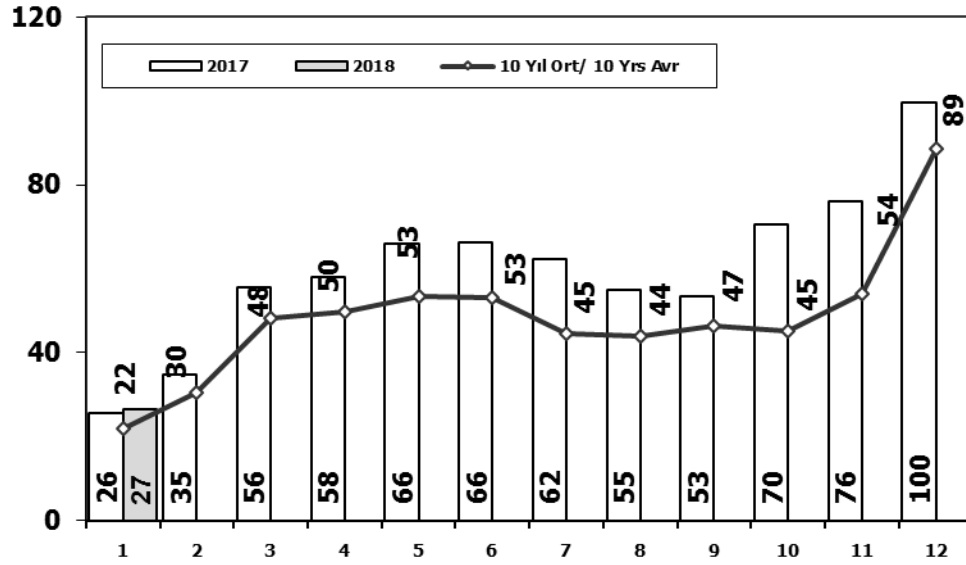


	1	2	3	4	5	6	7	8	9	10	11	12	1 Ay/Mo	Total
<b>2008</b>	33.792	38.121	56.814	50.967	51.627	49.393	44.692	46.592	46.829	35.147	28.152	44.418	33.792	526.544
<b>2009</b>	20.631	22.846	56.531	54.426	64.887	63.102	30.246	37.092	83.403	22.117	29.202	91.386	20.631	575.869
<b>2010</b>	21.050	32.313	53.828	57.079	61.628	63.390	63.718	64.645	66.601	76.780	77.406	154.734	21.050	793.172
<b>2011</b>	47.658	62.348	83.333	82.071	85.093	85.863	65.364	61.378	63.643	72.640	67.195	134.281	47.658	910.867
<b>2012</b>	31.219	43.827	68.957	66.014	74.820	74.781	65.122	60.848	73.197	62.677	75.045	121.113	31.219	817.620
<b>2013</b>	37.140	50.931	72.688	77.015	85.421	77.771	74.726	67.383	71.037	60.399	83.017	135.596	37.140	893.124
<b>2014</b>	34.225	37.308	50.964	56.766	61.909	63.952	62.206	62.839	70.180	69.259	83.937	153.941	34.225	807.486
<b>2015</b>	36.576	58.533	89.121	95.431	85.145	90.463	86.625	84.683	66.622	66.520	88.043	163.432	36.576	1.011.194
<b>2016</b>	33.740	54.223	85.214	87.041	96.576	94.203	59.505	73.269	69.068	85.251	124.839	144.928	33.740	1.007.857
<b>2017</b>	36.146	48.141	75.580	77.848	87.476	85.416	84.189	74.295	73.602	93.806	103.121	140.657	36.146	980.277
<b>2018</b>	36.053												36.053	36.053

Aylar / Months	10 Yil Ort. 10 Yrs Avr. (x1000)	2018 (x1000)	%
1	33,2	36,1	8,5

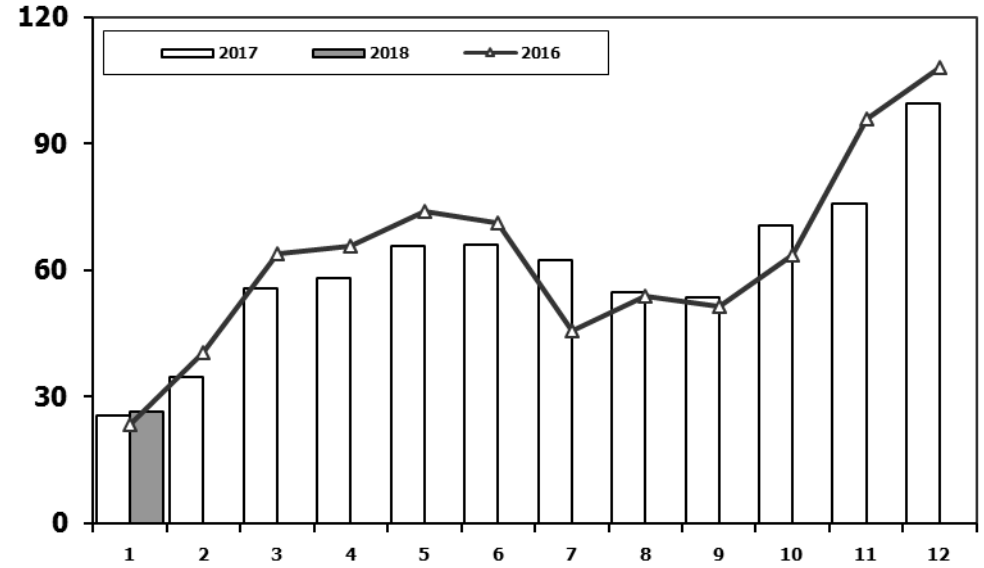
## Otomobil Pazarının Analizi (x1000)

### P.Cars Market Analysis (x1000)



## Otomobil Pazarı (x1000)

### P.Cars Market (x1000)

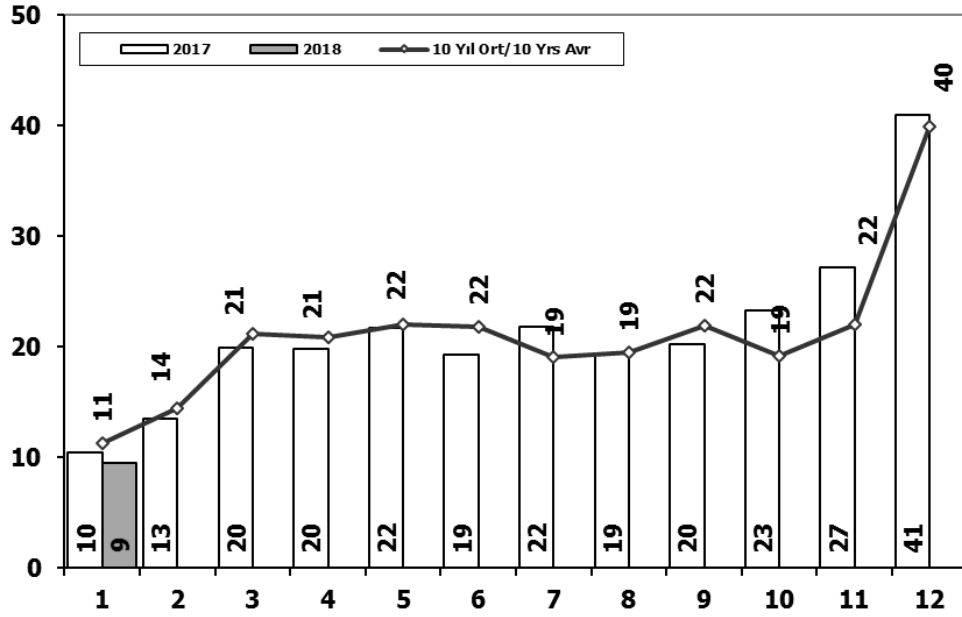


	1	2	3	4	5	6	7	8	9	10	11	12	1 Ay/Mo	Total
<b>2008</b>	18.588	21.196	34.147	30.313	31.477	28.724	25.530	26.102	27.053	19.788	17.201	25.879	18.588	305.998
<b>2009</b>	13.173	14.492	40.622	36.202	44.188	41.019	16.637	22.537	52.162	13.828	17.781	57.178	13.173	369.819
<b>2010</b>	12.594	20.651	33.958	36.549	40.467	42.086	41.399	42.222	42.477	47.859	50.061	99.461	12.594	509.784
<b>2011</b>	29.868	39.004	54.023	53.835	56.302	56.714	43.518	38.875	39.964	47.508	44.951	88.957	29.868	593.519
<b>2012</b>	21.077	29.189	47.270	45.645	50.460	50.849	44.531	41.236	49.360	43.440	52.297	80.926	21.077	556.280
<b>2013</b>	25.835	36.814	51.785	56.999	62.383	58.290	55.712	51.611	52.925	46.985	64.117	101.199	25.835	664.655
<b>2014</b>	24.368	27.167	37.812	42.769	46.379	47.278	46.602	45.131	49.262	50.814	59.695	110.054	24.368	587.331
<b>2015</b>	24.498	40.817	61.676	70.211	62.878	67.766	64.218	61.753	47.088	47.954	62.397	114.340	24.498	725.596
<b>2016</b>	23.358	40.588	63.975	65.618	73.832	71.111	45.566	53.977	51.340	63.746	95.783	108.044	23.358	756.938
<b>2017</b>	25.689	34.658	55.616	57.998	65.799	66.164	62.384	54.890	53.423	70.488	75.956	99.694	25.689	722.759
<b>2018</b>	26.611												26.611	26.611

Aylar / Months	10 Yil Ort. 10 Yrs Avr. (x1000)	2018 (x1000)	%
1	21,9	26,6	21,5

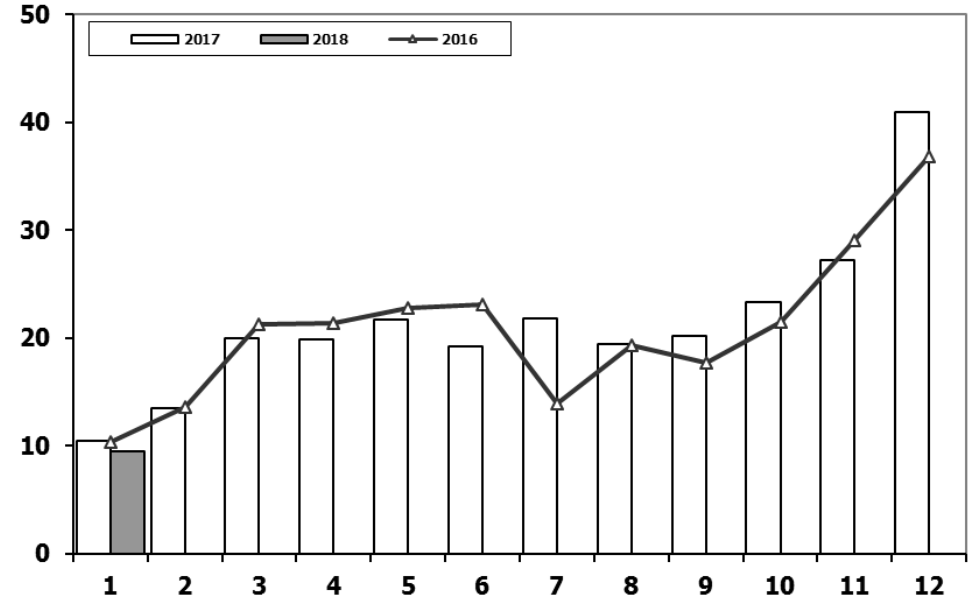
## Ticari Araç Pazarının Analizi (x1000)

### CV Market Analysis (x1000)



## Ticari Araç Pazarı (x1000)

### CV Total Market (x1000)

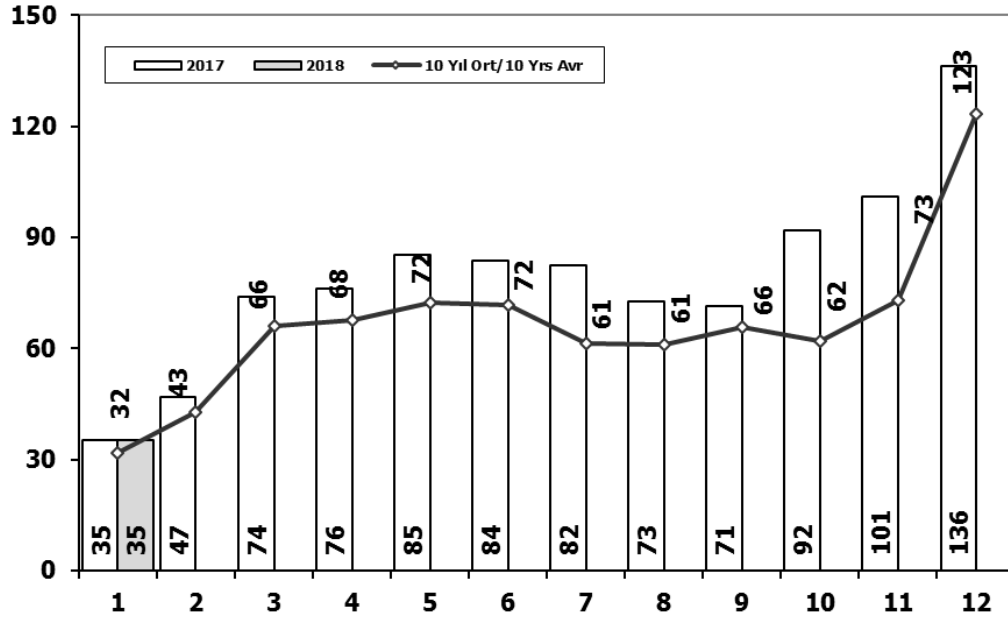


	1	2	3	4	5	6	7	8	9	10	11	12	1 Ay/Mo	Total
2008	15.204	16.925	22.667	20.654	20.150	20.669	19.162	20.490	19.776	15.359	10.951	18.539	15.204	220.546
2009	7.458	8.354	15.909	18.224	20.699	22.083	13.609	14.555	31.241	8.289	11.421	34.208	7.458	206.050
2010	8.456	11.662	19.870	20.530	21.161	21.304	22.319	22.423	24.124	28.921	27.345	55.273	8.456	283.388
2011	17.790	23.344	29.310	28.236	28.791	29.149	21.846	22.503	23.679	25.132	22.244	45.324	17.790	317.348
2012	10.142	14.638	21.687	20.369	24.360	23.932	20.591	19.612	23.837	19.237	22.748	40.187	10.142	261.340
2013	11.305	14.117	20.903	20.016	23.038	19.481	19.014	15.772	18.112	13.414	18.900	34.397	11.305	228.469
2014	9.857	10.141	13.152	13.997	15.530	16.674	15.604	17.708	20.918	18.445	24.242	43.887	9.857	220.155
2015	12.078	17.716	27.445	25.220	22.267	22.697	22.407	22.930	19.534	18.566	25.646	49.092	12.078	285.598
2016	10.382	13.635	21.239	21.423	22.744	23.092	13.939	19.292	17.728	21.505	29.056	36.884	10.382	250.919
2017	10.457	13.483	19.964	19.850	21.677	19.252	21.805	19.405	20.179	23.318	27.165	40.963	10.457	257.518
2018	9.442												9.442	9.442

Aylar / Months	10 Yil Ort. 10 Yrs Avr. (x1000)	2018 (x1000)	%
1	11,3	9,4	-17

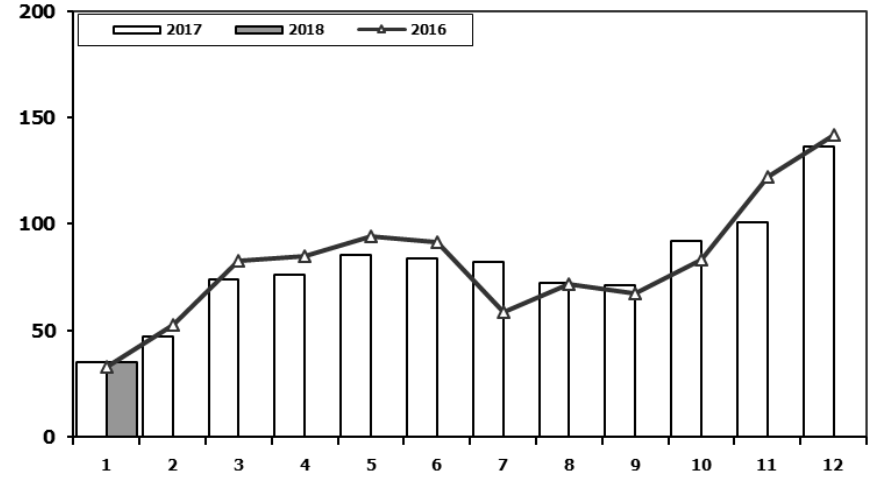
## Hafif Araç Pazarının Analizi (x1000)

### LV Market Analysis (x1000)



## Hafif Araç Pazarı (x1000)

### LV Total Market (x1000)



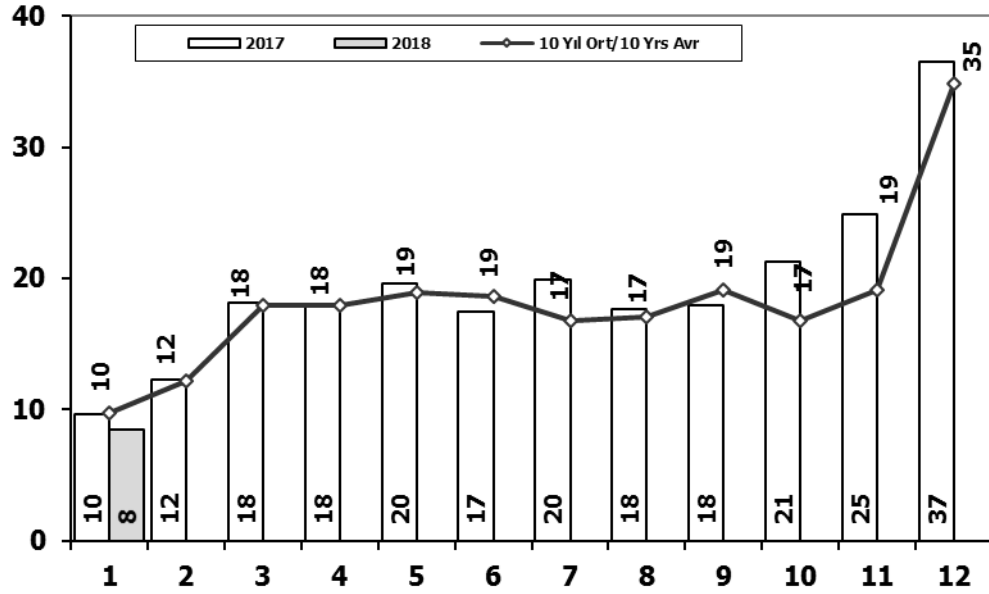
	1	2	3	4	5	6	7	8	9	10	11	12	1 Ay/Mo	Total
<b>2008</b>	31.527	35.251	53.649	47.701	48.598	46.324	42.156	43.670	43.932	32.884	26.253	42.078	31.527	494.023
<b>2009</b>	19.606	21.742	55.111	52.640	63.191	61.067	28.845	35.609	81.397	21.033	27.962	88.923	19.606	557.126
<b>2010</b>	20.095	31.172	51.769	54.946	59.377	60.896	61.345	61.764	63.814	73.404	73.962	148.369	20.095	760.913
<b>2011</b>	44.892	58.663	78.403	77.695	80.646	81.573	63.044	58.406	60.129	69.421	63.657	127.910	44.892	864.439
<b>2012</b>	29.545	41.324	64.884	62.949	70.863	71.067	62.304	58.148	69.629	59.938	71.710	115.400	29.545	777.761
<b>2013</b>	35.523	48.307	68.774	73.575	81.468	74.096	71.596	65.043	67.963	58.014	79.301	129.718	35.523	853.378
<b>2014</b>	32.670	35.021	47.581	53.305	58.121	60.163	59.907	60.199	66.531	66.573	80.621	146.989	32.670	767.681
<b>2015</b>	34.615	55.331	83.302	91.602	81.542	86.158	83.836	82.577	64.025	64.255	84.601	156.173	34.615	968.017
<b>2016</b>	32.713	52.825	82.948	84.887	93.904	91.540	58.533	71.556	67.593	83.000	122.309	141.912	32.713	983.720
<b>2017</b>	35.323	46.965	73.802	75.988	85.422	83.658	82.297	72.536	71.352	91.752	100.859	136.240	35.323	956.194
<b>2018</b>	35.076												35.076	35.076

Aylar / Months	10 Yil Ort. 10 Yrs Avr. (x1000)	2018 (x1000)	%
1	31,7	35,1	10,8



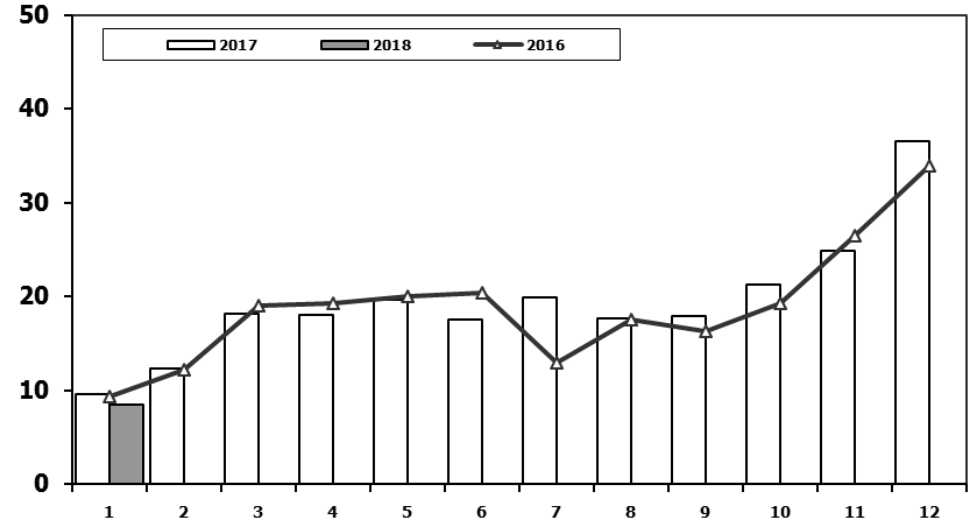
## Hafif Ticari Araç Pazarının Analizi (x1000)

### LCV Market Analysis (x1000)



## Hafif Ticari Araç Pazarı (x1000)

### LCV Total Market (x1000)

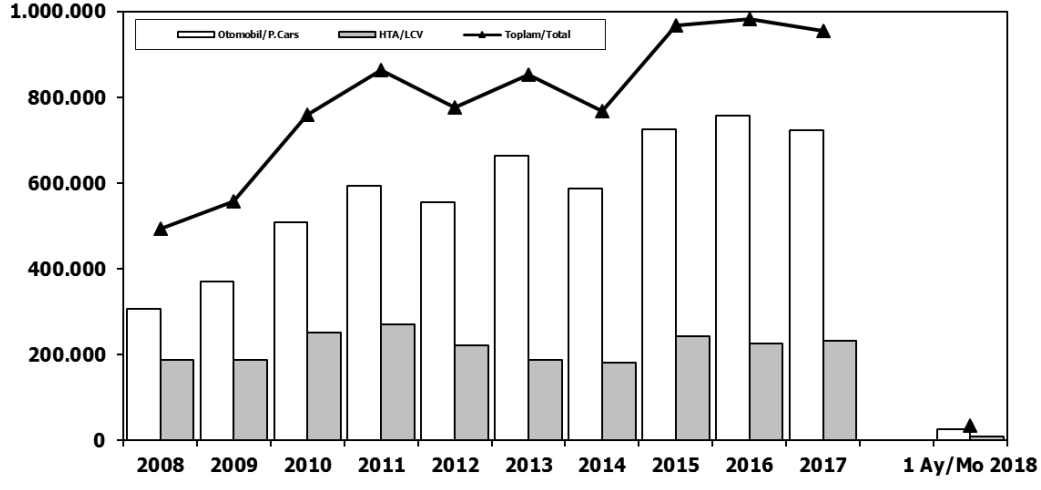


	1	2	3	4	5	6	7	8	9	10	11	12	1 Ay/Mo	Total
2008	12.939	14.055	19.502	17.388	17.121	17.600	16.626	17.568	16.879	13.096	9.052	16.199	12.939	188.025
2009	6.433	7.250	14.489	16.438	19.003	20.048	12.208	13.072	29.235	7.205	10.181	31.745	6.433	187.307
2010	7.501	10.521	17.811	18.397	18.910	18.810	19.946	19.542	21.337	25.545	23.901	48.908	7.501	251.129
2011	15.024	19.659	24.380	23.860	24.344	24.859	19.526	19.531	20.165	21.913	18.706	38.953	15.024	270.920
2012	8.468	12.135	17.614	17.304	20.403	20.218	17.773	16.912	20.269	16.498	19.413	34.474	8.468	221.481
2013	9.688	11.493	16.989	16.576	19.085	15.806	15.884	13.432	15.038	11.029	15.184	28.519	9.688	188.723
2014	8.302	7.854	9.769	10.536	11.742	12.885	13.305	15.068	17.269	15.759	20.926	36.935	8.302	180.350
2015	10.117	14.514	21.626	21.391	18.664	18.392	19.618	20.824	16.937	16.301	22.204	41.833	10.117	242.421
2016	9.355	12.237	18.973	19.269	20.072	20.429	12.967	17.579	16.253	19.254	26.526	33.868	9.355	226.782
2017	9.634	12.307	18.186	17.990	19.623	17.494	19.913	17.646	17.929	21.264	24.903	36.546	9.634	233.435
2018	8.465												8.465	8.465

Aylar / Months	10 Yil Ort. 10 Yrs Avr. (x1000)	2018 (x1000)	%
1	9,7	8,5	-13,1

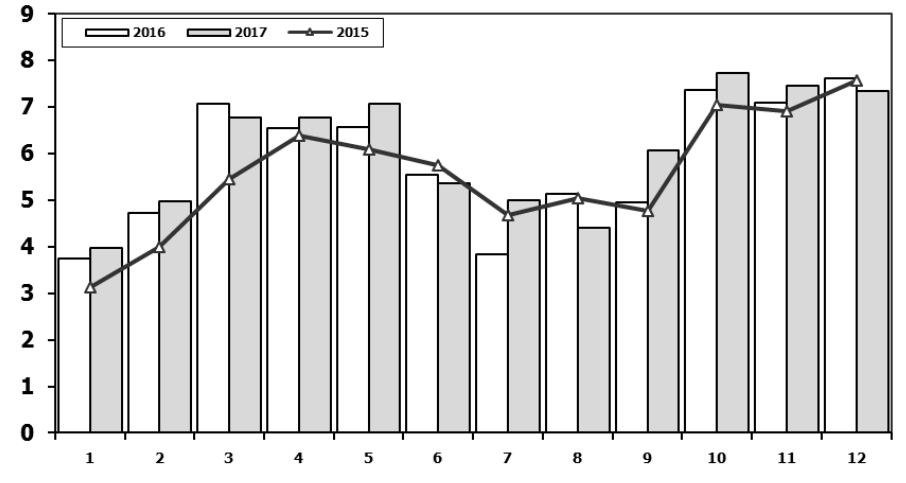
## Hafif Araç Pazarı (AYA < 3.5 Ton)

Light Vehicle Market (GVW < 3.5 Ton)



## Traktör Pazarı (x1000)

F.Tractor Market (x1000)



	2008	2009	2010	2011	2012	2013	2014	2015	2016	2017	1 Ay/Mo 2018
<b>Otomobil/P.Cars</b>	305.998	369.819	509.784	593.519	556.280	664.655	587.331	725.596	756.938	722.759	26.611
<b>HTA/LCV</b>	188.025	187.307	251.129	270.920	221.481	188.723	180.350	242.421	226.782	233.435	8.465
<b>Toplam/Total</b>	494.023	557.126	760.913	864.439	777.761	853.378	767.681	968.017	983.720	956.194	35.076
<b>HTA/LCV (%)</b>	38	34	33	31	28	22	23	25	23	24	24

	1	2	3	4	5	6	7	8	9	10	11	12	Total
<b>2007</b>	2.816	2.244	3.053	2.657	3.188	3.141	2.497	2.381	3.025	2.755	3.549	3.097	34.403
<b>2008</b>	2.770	1.855	3.395	3.081	2.769	2.400	2.232	2.485	1.856	1.773	1.305	1.101	27.022
<b>2009</b>	717	572	688	1.070	1.297	1.256	1.054	1.183	1.117	1.356	1.304	2.144	13.758
<b>2010</b>	1.111	1.991	2.330	3.039	2.567	2.638	1.965	3.019	2.806	4.424	3.978	6.168	36.036
<b>2011</b>	2.975	5.242	5.927	5.358	6.016	6.335	4.534	4.051	4.140	5.828	4.943	4.992	60.341
<b>2012</b>	2.362	1.983	4.348	6.579	6.273	4.569	3.837	3.158	3.618	4.027	4.807	4.757	50.318
<b>2013</b>	2.161	2.432	4.005	4.585	5.616	3.136	4.574	3.408	4.935	4.762	5.781	6.891	52.286
<b>2014</b>	2.169	3.512	4.476	4.905	5.094	5.028	4.233	4.920	5.619	5.743	6.250	7.409	59.358
<b>2015</b>	3.124	3.984	5.460	6.383	6.078	5.748	4.677	5.044	4.765	7.049	6.898	7.564	66.774
<b>2016</b>	3.739	4.731	7.067	6.546	6.575	5.543	3.833	5.134	4.945	7.372	7.090	7.603	70.178
<b>2017</b>	3.974	4.964	6.773	6.780	7.057	5.356	5.003	4.396	6.064	7.734	7.457	7.351	72.909

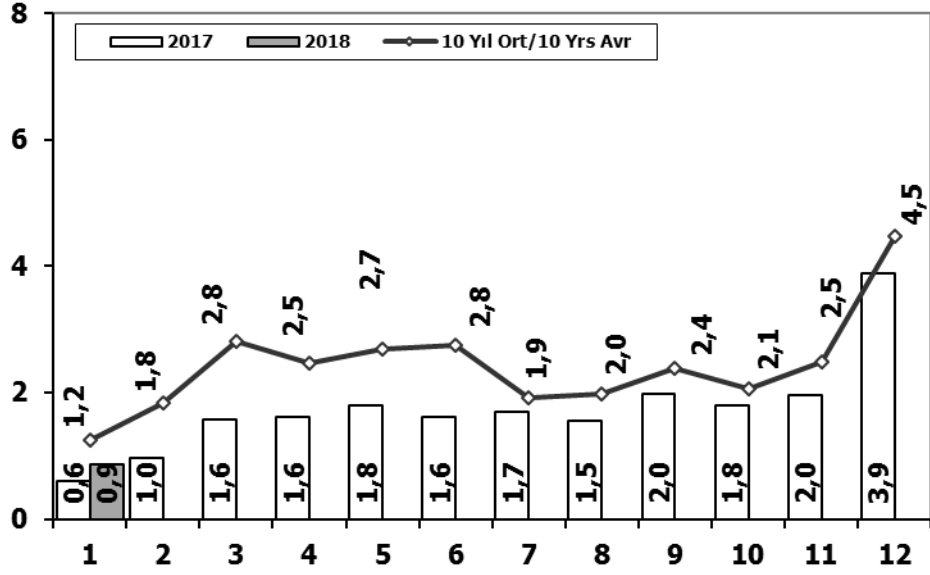
Kaynak: TÜİK trafik kayıtları.

Rakamlar, son iki model yılına ait traktör tescillerinden oluşmaktadır.

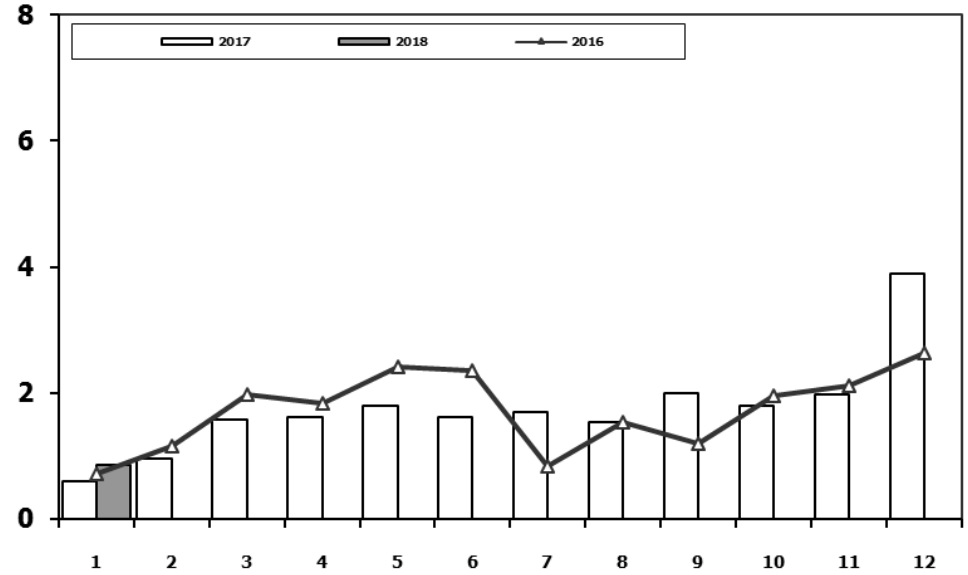
Source: Turkish Statistical Institute – Traffic registrations

Data represents the last two model year's farm tractors registration figures

## Kamyon Pazarının Analizi (x1000) AYA > 5 Ton Truck Market Analysis (x1000) GVW > 5 Ton



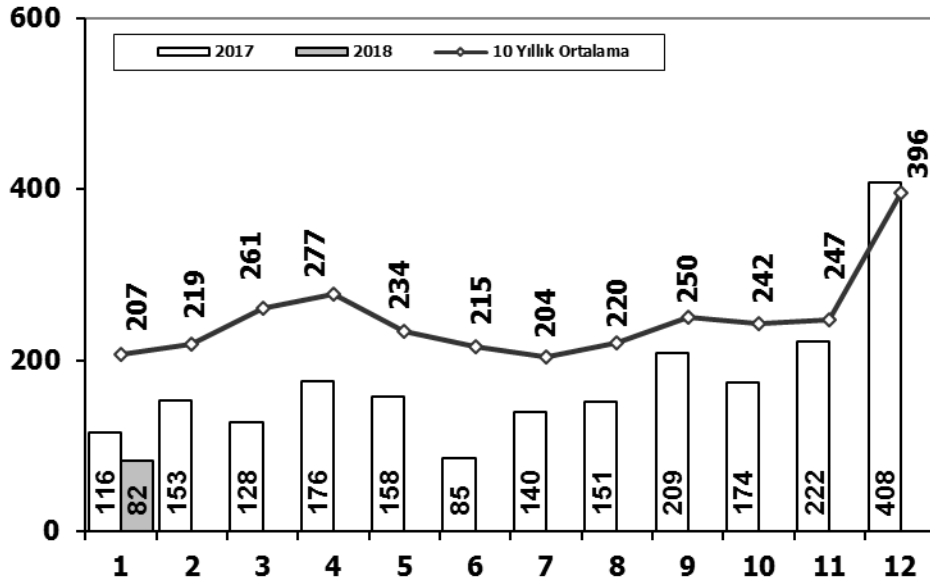
## Kamyon Pazarı (x1000) AYA > 5 Ton Truck Market (x1000) GVW > 5 Ton



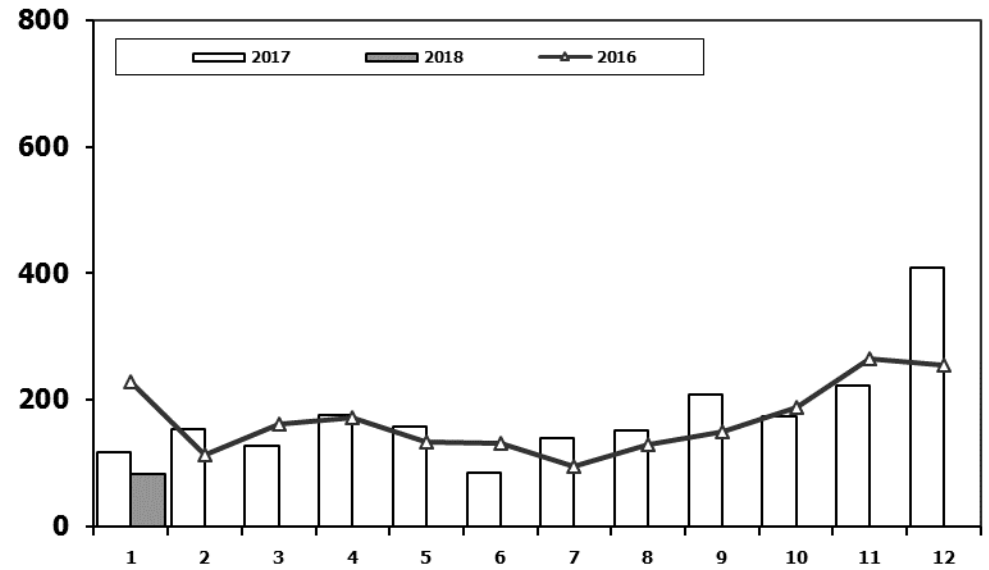
	1	2	3	4	5	6	7	8	9	10	11	12	1 Ay/Mo	Total
2008	1.797	2.309	2.621	2.578	2.459	2.526	2.067	2.377	2.390	1.790	1.512	1.834	1.797	26.260
2009	771	759	1.034	1.342	1.355	1.651	1.156	1.205	1.780	866	981	2.015	771	14.915
2010	777	968	1.772	1.807	1.966	2.205	2.093	2.446	2.444	3.071	3.136	5.677	777	28.362
2011	2.552	3.292	4.418	3.754	3.803	3.749	1.996	2.478	3.081	2.774	3.108	5.787	2.552	40.792
2012	1.375	2.159	3.595	2.697	3.321	3.250	2.450	2.277	2.991	2.244	3.006	5.000	1.375	34.365
2013	1.077	1.931	3.127	2.720	3.145	2.951	2.411	1.845	2.554	1.801	3.173	5.025	1.077	31.760
2014	1.117	1.949	2.818	3.092	3.405	3.438	2.083	2.390	3.281	2.494	3.028	6.313	1.117	35.408
2015	1.705	2.841	5.270	3.208	3.190	3.824	2.463	1.798	2.244	1.848	2.902	6.540	1.705	37.833
2016	718	1.154	1.984	1.835	2.420	2.358	830	1.529	1.204	1.962	2.123	2.640	718	20.757
2017	607	964	1.569	1.610	1.807	1.621	1.689	1.546	1.990	1.800	1.970	3.894	607	21.067
2018	869												869	869

Aylar / Months	10 Yil Ort. 10 Yrs Avr. (x1000)	2018 (x1000)	%
1	1,2	0,9	-30,5

## Midibüs Pazarının Analizi (7-9 mt / 25-35 Kişilik) Midibus Market Analysis (7-9 mt / 25-35 Passengers)



## Midibüs Pazarı (7-9 mt / 25-35 Kişilik Midibüs) Midibus Market (7-9 mt / 25-35 Passengers)

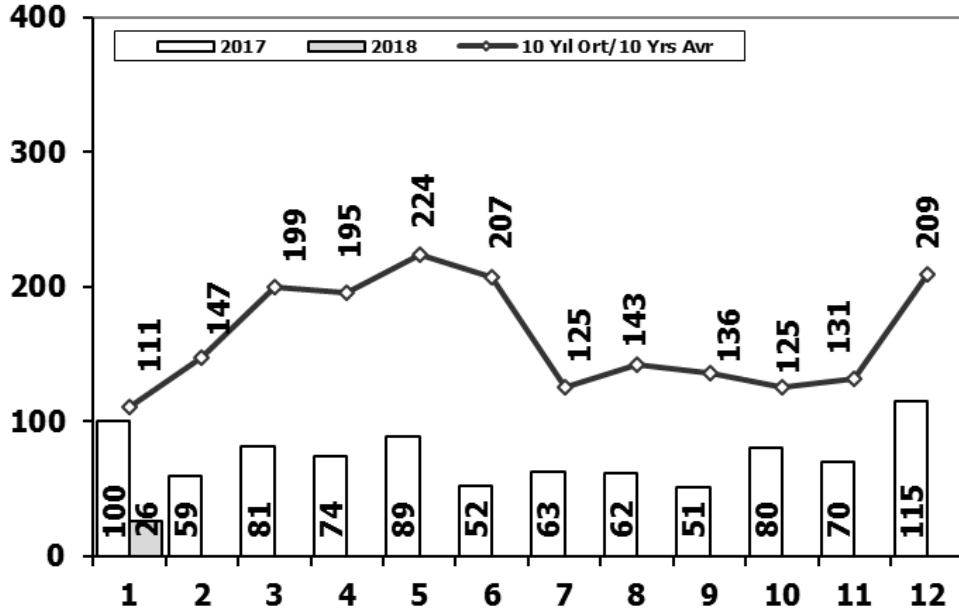


	1	2	3	4	5	6	7	8	9	10	11	12	1 Ay/Mo	Total
2008	391	476	436	512	419	331	368	380	341	352	246	270	391	4.522
2009	154	124	160	220	174	198	160	175	168	143	206	323	154	2.205
2010	155	131	185	167	140	138	129	246	236	206	202	437	155	2.372
2011	138	195	294	316	280	258	211	305	301	276	260	270	138	3.104
2012	179	257	277	229	257	239	216	249	325	269	189	398	179	3.084
2013	191	268	289	276	283	241	367	235	305	392	415	697	191	3.959
2014	335	265	326	280	206	223	161	174	229	140	226	454	335	3.019
2015	177	213	350	425	288	306	195	154	231	283	240	450	177	3.312
2016	229	112	161	172	133	132	95	130	150	187	264	254	229	2.019
2017	116	153	128	176	158	85	140	151	209	174	222	408	116	2.120
2018	82												82	82

Aylar / Months	10 Yıl Ort. 10 Yrs Avr.	2018	%
1	207	82	-60

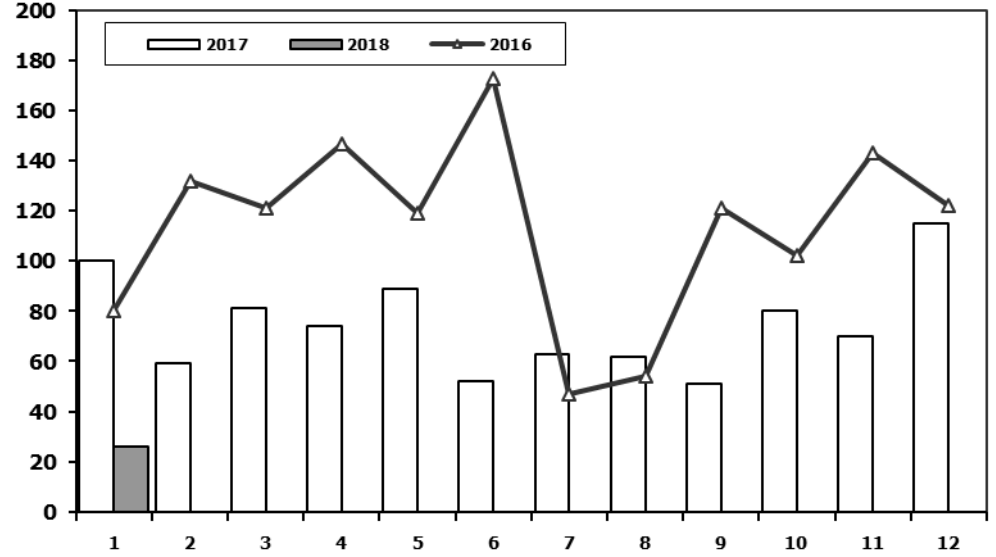
## Otobüs Pazarının Analizi

Bus Market Analysis



## Otobüs Pazarı

Bus Market

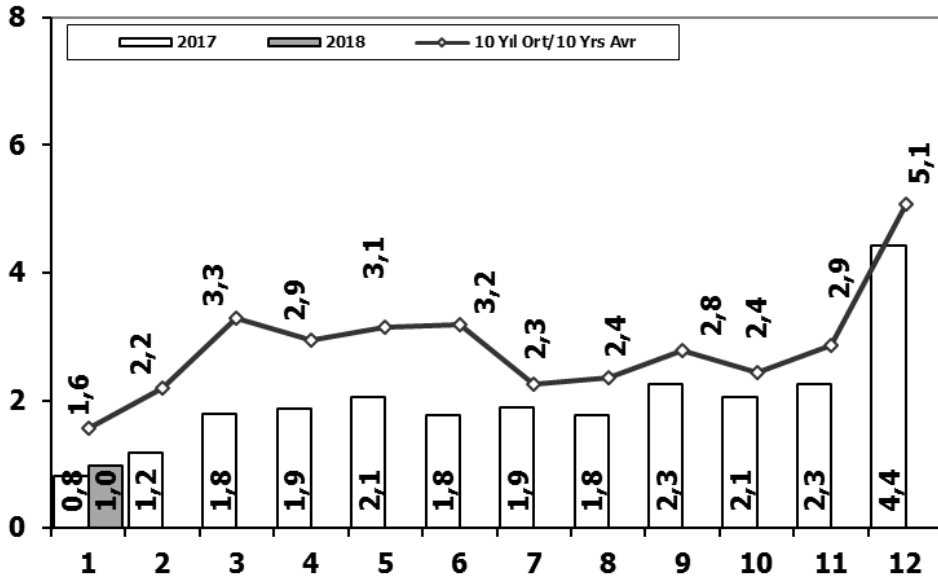


	1	2	3	4	5	6	7	8	9	10	11	12	1 Ay/Mo	Total
2008	77	85	108	176	151	212	101	165	166	121	141	236	77	1.739
2009	100	221	226	224	167	186	85	103	58	75	53	125	100	1.623
2010	23	42	102	159	145	151	151	189	107	99	106	251	23	1.525
2011	76	198	218	306	364	283	113	189	132	169	170	314	76	2.532
2012	120	87	201	139	379	225	152	174	252	226	140	315	120	2.410
2013	349	425	498	444	525	483	352	260	215	192	128	156	349	4.027
2014	103	73	239	89	177	128	55	76	139	52	62	185	103	1.378
2015	79	148	199	196	125	175	131	154	122	134	300	269	79	2.032
2016	80	132	121	147	119	173	47	54	121	102	143	122	80	1.361
2017	100	59	81	74	89	52	63	62	51	80	70	115	100	896
2018	26												26	26

Aylar / Months	10 Yil Ort. 10 Yrs Avr.	2018	%
1	111	26	-77

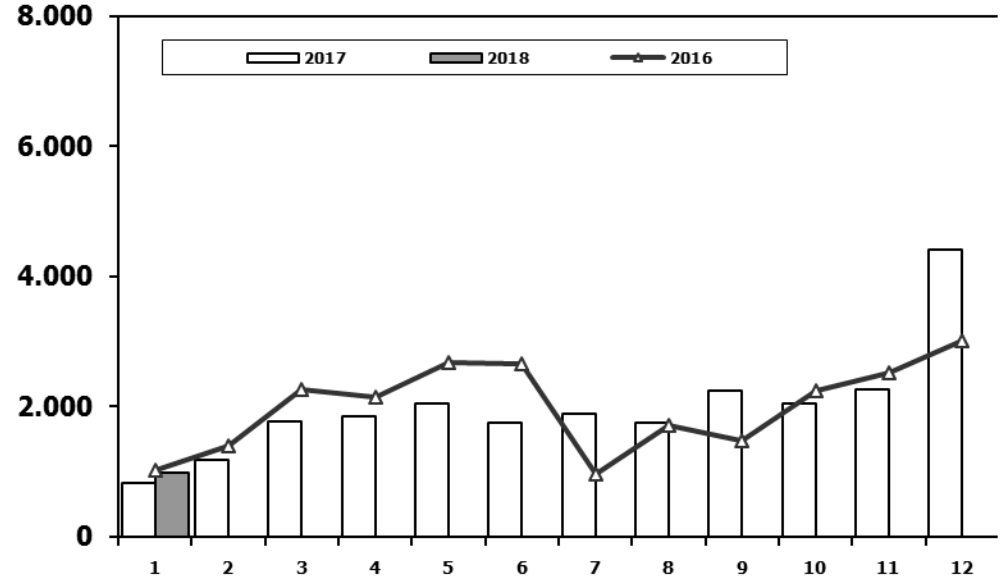
## Ağır Ticari Araç Pazarının Analizi (x1000)

### HCV Market Analysis (x1000)



## Ağır Ticari Araç Pazarı (x1000)

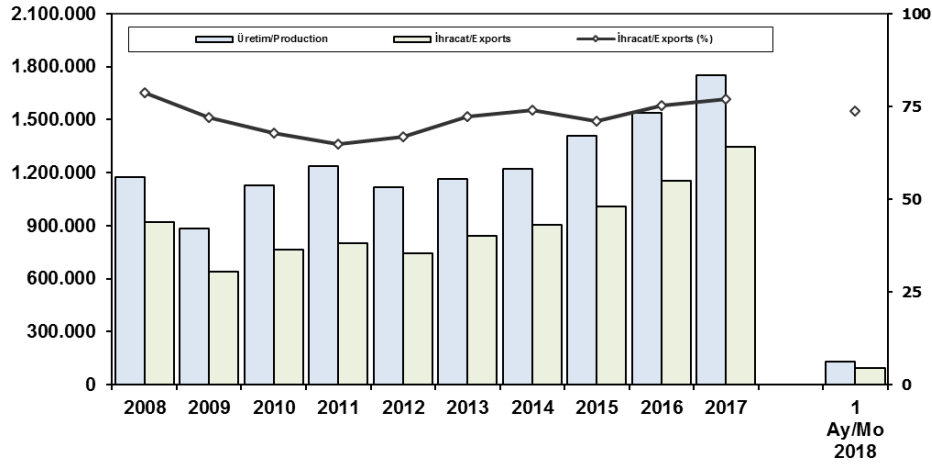
### HCV Market (x1000)



	1	2	3	4	5	6	7	8	9	10	11	12	1 Ay/Mo	Total
2008	2.265	2.870	3.165	3.266	3.029	3.069	2.536	2.922	2.897	2.263	1.899	2.340	2.265	32.521
2009	1.025	1.104	1.420	1.786	1.696	2.035	1.401	1.483	2.006	1.084	1.240	2.463	1.025	18.743
2010	955	1.141	2.059	2.133	2.251	2.494	2.373	2.881	2.787	3.376	3.444	6.365	955	32.259
2011	2.766	3.685	4.930	4.376	4.447	4.290	2.320	2.972	3.514	3.219	3.538	6.371	2.766	46.428
2012	1.674	2.503	4.073	3.065	3.957	3.714	2.818	2.700	3.568	2.739	3.335	5.713	1.674	39.859
2013	1.617	2.624	3.914	3.440	3.953	3.675	3.130	2.340	3.074	2.385	3.716	5.878	1.617	39.746
2014	1.555	2.287	3.383	3.461	3.788	3.789	2.299	2.640	3.649	2.686	3.316	6.952	1.555	39.805
2015	1.961	3.202	5.819	3.829	3.603	4.305	2.789	2.106	2.597	2.265	3.442	7.259	1.961	43.177
2016	1.027	1.398	2.266	2.154	2.672	2.663	972	1.713	1.475	2.251	2.530	3.016	1.027	24.137
2017	823	1.176	1.778	1.860	2.054	1.758	1.892	1.759	2.250	2.054	2.262	4.417	823	24.083
2018	977												977	977

Aylar / Months	10 Yıl Ort. 10 Yrs Avr. (x1000)	2018 (x1000)	%
1	1,6	1,0	-37,6

## İhracat/Üretim (2008-2018) (Traktör dahil) Exports/Production (2008-2018) (Including F.Tractor)



## Taşıt Araçları İhracatı (2016-2018) Motor Vehicle Exports (2016-2018)

SEKTÖR/SECTOR	2016	2017	2018		2018/2017 (%)
			1 Ay - Mo		
OTOMOBİL/ P.Cars	745.709	921.354	76.492	73.408	-4
TİCARİ ARAÇLAR / CV	395.673	411.440	26.878	20.924	-22
* Kamyonet/Pick-Up	347.949	350.108	23.417	18.118	-23
* Minibüs/Minibus	34.790	45.794	3.045	1.649	-46
* Kamyon/Truck	5.521	7.800	25	636	2444
* Midibüs/Midibus	915	710	18	13	-28
* Otobüs/Bus	6.498	7.028	373	508	36
<b>TAŞIT ARAÇLARI /MV TOTAL</b>	<b>1.141.382</b>	<b>1.332.794</b>	<b>103.370</b>	<b>94.332</b>	<b>-9</b>
<b>TRAKTÖR/F.TRACTOR</b>	<b>13.651</b>	<b>13.123</b>	<b>989</b>	<b>802</b>	<b>-19</b>
<b>TOTAL</b>	<b>1.155.033</b>	<b>1.345.917</b>	<b>104.359</b>	<b>95.134</b>	<b>-9</b>

## Otomotiv Ana ve Yan Sanayii İhracatı (ABD \$) CBU and CKD Exports - \$

Sektör / Sector	2014	2015	2016	2017	2018		2018/2017 (%)
					Ocak / January		
<b>Yan Sanayi İhracatı/Total Component Exports</b>	<b>9.504.013.791</b>	<b>8.641.977.425</b>	<b>8.946.472.202</b>	<b>9.838.541.337</b>	<b>726.967.684</b>	<b>911.475.080</b>	<b>25%</b>
İç ve Dış Lastik / Tyres	1.126.709.610,14	960.550.807	978.124.241	1.131.881.119	72.910.334	105.585.076	45%
Emniyet Camı / Safety Glasses	143.208.298,99	124.564.841	119.553.098	136.486.808	9.750.498	13.558.052	39%
Motor (Engine)	171.893.752,32	221.897.271	370.418.066	486.426.738	38.061.204	59.330.173	56%
Akümülatör / Batteries	289.101.198,21	220.462.827	224.588.995	296.139.813	16.095.055	20.842.566	29%
Diğer Aksam ve Parça / Spare Parts&Components	7.773.100.931,83	7.114.501.679	7.253.787.802	7.787.606.860	590.150.594	712.159.212	21%
<b>Ana Sanayi İhracatı/Total Vehicle Exports</b>	<b>13.259.499.977</b>	<b>12.977.346.859</b>	<b>15.302.656.887</b>	<b>19.147.991.646</b>	<b>1.355.041.651</b>	<b>1.422.550.256</b>	<b>5%</b>
Otobüs / Bus	985.983.007,01	1.023.556.746	1.190.475.986	1.311.098.736	68.399.712	94.614.373	38%
Midibüs-Minibüs / Minibus- Minibus	97.685.509,12	130.195.838	238.911.957	217.704.499	16.154.545	16.566.351	3%
Otomobil (P. Cars)	7.258.361.005,24	6.881.867.274	8.336.928.418	11.790.776.093	912.789.459	951.648.461	4%
Kamyon-Kamyonet/HCV-LCV	4.201.760.813,55	4.264.018.829	4.617.147.751	4.849.465.868	319.490.321	272.569.611	-15%
Römork ve Yarı Römork/Trailer-Semi Trailer	252.354.014,20	252.397.167	265.338.366	230.168.223	17.797.051	28.108.250	58%
Çekici/Truck-Tractor	38.396.524,81	48.108.959	316.355.575	427.967.083	1.063.790	42.082.169	3856%
Tarım Traktörü/Farm Tractor	424.959.103,39	377.202.046	337.498.834	320.811.145	19.346.775	16.961.041	-12%
<b>Toplam/Total</b>	<b>22.763.513.769</b>	<b>21.619.324.284</b>	<b>24.249.129.088</b>	<b>28.986.532.983</b>	<b>2.082.009.335</b>	<b>2.334.025.335</b>	<b>12%</b>

Kaynak: Uludağ İhracatçı Birlikleri . UİB tarafından OSD için özel olarak analiz edilen Otomotiv İhracatı kapsamında; UİB Türkiye Genel Otomotiv Endüstrisi sınıflandırmasına kıyasla "Römork ve Yarı Römork", "Tarım Traktörü" verileri dahil edilmekte; "Kullanılmış Araçlar", "İki Tekerlekli Taşıtlar", "Demiryolu Taşıtları" hariç tutulmaktadır.

Source: Uludağ Exporters Association - Special Analyze for OSD

Compared to Turkish General Automotive Industry classification, this special analyze includes; farms tractors, trailers and semi-trailers, does not include; used vehicles, two-wheeled vehicles and railway vehicles.

**Sektör Bazında İhracat (1000 \$)**

Exports on Sectorial Basis

SEKTÖRLER (1.000 \$)	OCAK				SON 12 AYLIK			
	2017	2018	Değişim ('18/'17)	Pay(18)	2017	2018	Değişim ('18/'17)	Pay(18)
Otomotiv Endüstrisi	2.064.185	2.286.661	10,8	18,7	24.439.834	28.754.250	17,7	18,2
Hazırgiyim ve Konfeksiyon	1.245.687	1.433.355	15,1	11,8	16.883.712	17.226.568	2,0	10,9
Kimyevi Maddeler ve Mamulleri	1.230.554	1.353.177	10,0	11,1	14.169.270	16.160.779	14,1	10,2
Çelik	850.631	1.119.974	31,7	9,2	9.296.911	11.725.191	26,1	7,4
Elektrik Elektronik ve Hizmet	603.328	769.397	27,5	6,3	9.952.139	10.664.305	7,2	6,7
Tekstil ve Hammaddeleri	613.394	696.416	13,5	5,7	7.883.840	8.183.688	3,8	5,2
Demir ve Demir Dışı Metaller	464.950	597.892	28,6	4,9	5.986.777	6.944.068	16,0	4,4
Hububat, Bakliyat, Yağlı Tohumlar ve Mamulleri	523.302	548.129	4,7	4,5	6.421.546	6.394.933	-0,4	4,0
Makine ve Aksamları	388.792	513.165	32,0	4,2	5.312.693	6.207.803	16,8	3,9
Madencilik Ürünleri	328.015	391.508	19,4	3,2	3.879.054	4.752.768	22,5	3,0
<b>TOPLAM</b>	<b>10.486.114</b>	<b>12.198.008</b>	<b>16,3</b>	<b>100,0</b>	<b>143.469.582</b>	<b>158.004.060</b>	<b>10,1</b>	<b>100,0</b>

Kaynak: TİM

Ocak ayı ihracat verilerine, "İhracatçı Birlikleri Kaydından Muaf İhracat" verisi dahil değildir.

Source: TİM

Exportation data for January does not include "Exempted Exports from the Exporters' Union Registration".

**First 3 Sectors:**

- 1- Automotive Industry
- 2- Ready Wear and Confection
- 3- Chemical Articles and Products

**Firma Bazında İhracat (Adet)**

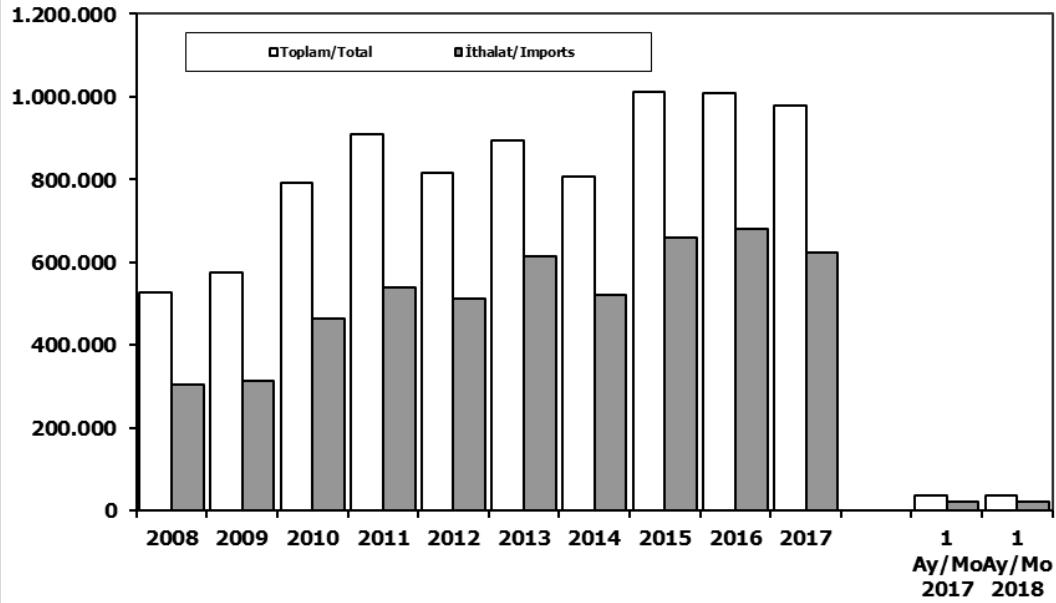
Export Of Member Companies (Unit)

FİRMALAR Companies	2016	2017	Ocak January	
			2017	2018
OYAK RENAULT	270.088	287.915	22.534	27.028
TOYOTA	109.184	246.466	22.122	21.574
FORD OTOSAN	256.706	296.840	22.926	16.670
TOFAŞ	279.444	270.698	19.787	15.577
HYUNDAI ASSAN	207.234	204.382	15.119	10.899
HONDA TÜRKİYE	2.914	9.391	490	1.251
TÜRK TRAKTÖR	12.625	12.023	905	801
M. BENZ TÜRK	8.307	9.865	191	786
MAN TÜRKİYE	1.717	2.007	129	261
KARSAN	3.629	2.969	2	248
OTOKAR	833	691	54	23
A.I.O.S.	673	700	4	9
TEMSA	653	870	12	6
HATTAT TRAKTÖR	1.026	1.100	84	1
<b>GENEL TOPLAM</b>	<b>1.155.033</b>	<b>1.345.917</b>	<b>104.359</b>	<b>95.134</b>

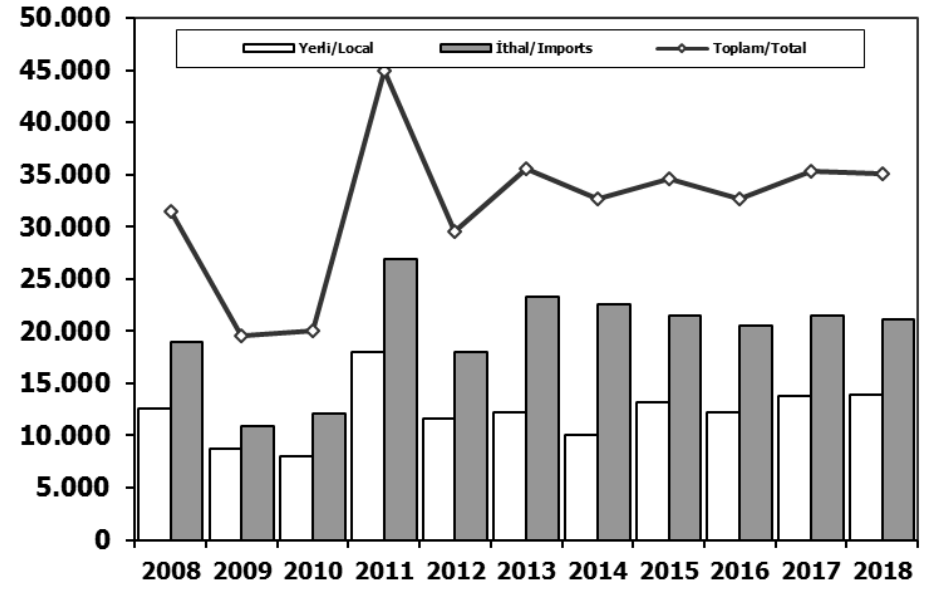
Kaynak: OSD



## Toplam Pazar (Otomobil+T.Araç) Total Market (P.Cars+C.V)



## Hafif Araçlar Pazarı (2008-2018 Ocak) Light Vehicle Market (2008-2018 January)

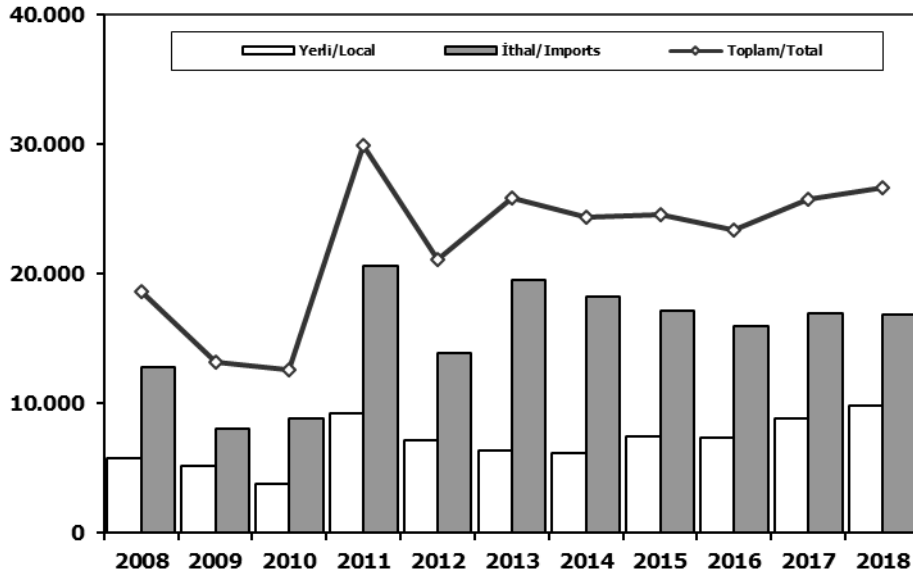


	2008	2009	2010	2011	2012	2013	2014	2015	2016	2017	1 Ay/Mo 2017	1 Ay/Mo 2018
Toplam/Total	526.544	575.869	793.172	910.867	817.620	893.124	807.486	1.011.194	1.007.857	980.277	36.146	36.053
İthalat/Imports	306.087	313.921	465.408	538.532	511.694	615.609	522.842	660.045	681.308	624.409	21.826	21.581
İthalat/Imports (%)	58	55	59	59	63	69	65	65	68	64	60	60

	2008	2009	2010	2011	2012	2013	2014	2015	2016	2017	2018
Yerli/Local	12.593	8.719	8.005	18.023	11.570	12.216	10.106	13.173	12.190	13.781	13.915
İthal/Imports	18.934	10.887	12.090	26.869	17.975	23.307	22.564	21.442	20.523	21.542	21.161
Toplam/Total	31.527	19.606	20.095	44.892	29.545	35.523	32.670	34.615	32.713	35.323	35.076
İthalat/Imports (%)	60	56	60	60	61	66	69	62	63	61	60

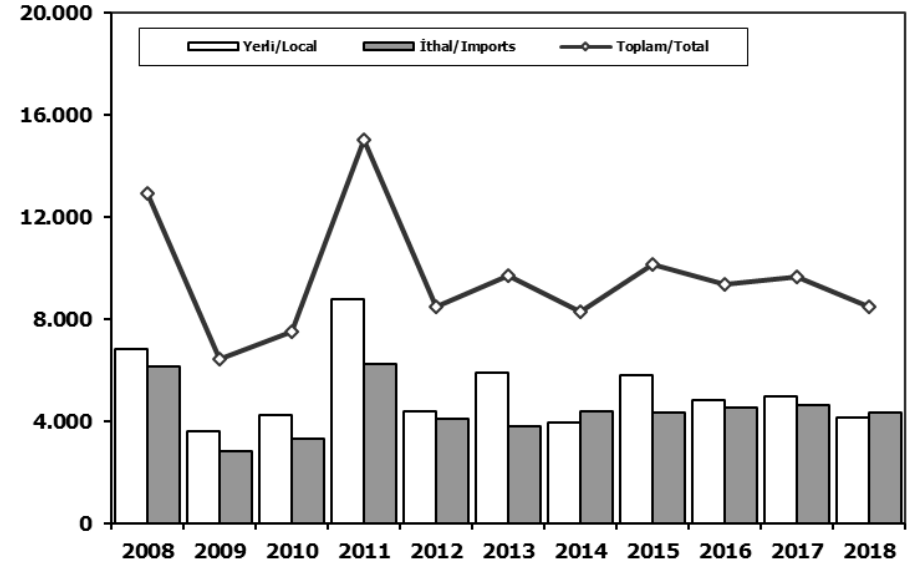
## Otomobil Pazarı (2008-2018 Ocak)

### P.Cars Market (2008-2018 January)



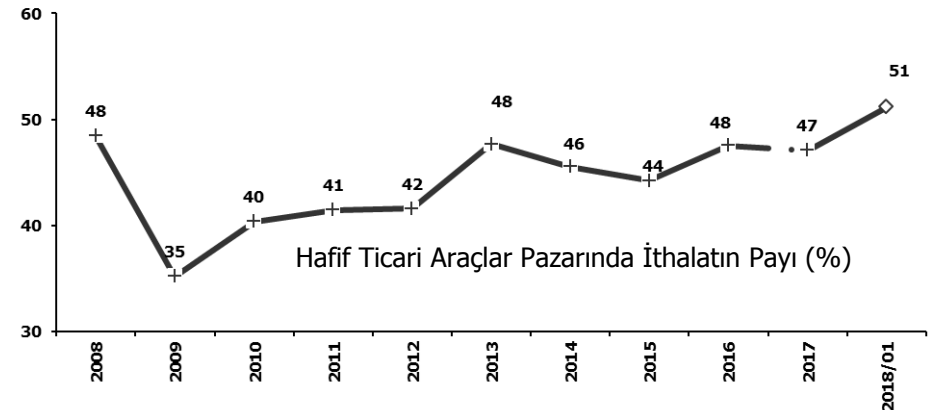
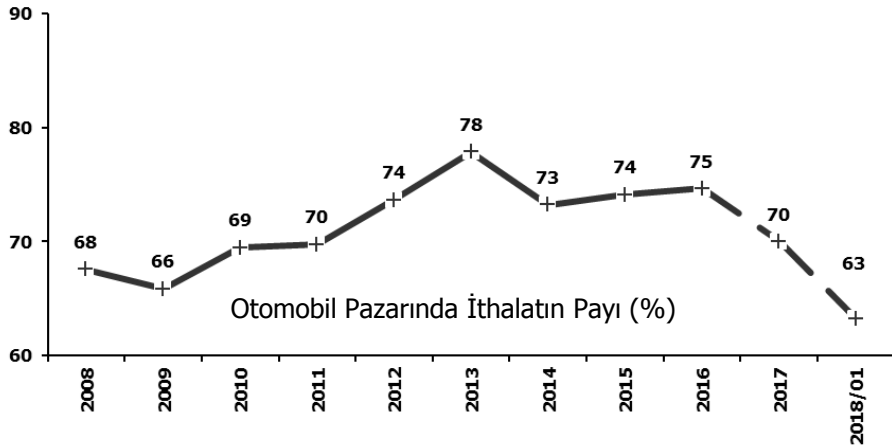
## Hafif Ticari Araçlar Pazarı (2008-2018 Ocak)

### Light Commercial Vehicle Market (2008-2018 January)



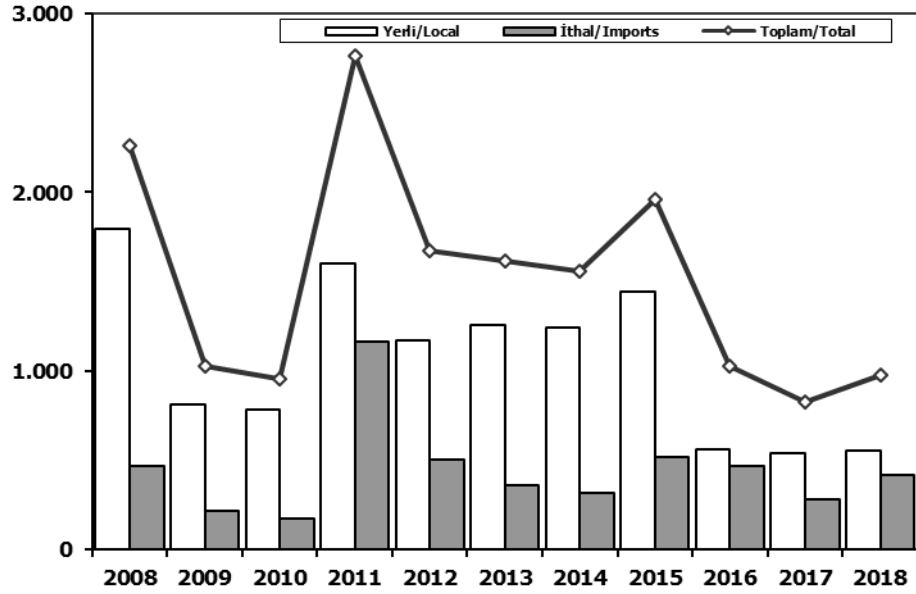
	2008	2009	2010	2011	2012	2013	2014	2015	2016	2017	2018
Yerli/Local	5.792	5.129	3.789	9.237	7.190	6.326	6.160	7.396	7.375	8.793	9.779
İthal/Imports	12.796	8.044	8.805	20.631	13.887	19.509	18.208	17.102	15.983	16.896	16.832
Toplam/Total	18.588	13.173	12.594	29.868	21.077	25.835	24.368	24.498	23.358	25.689	26.611
İthalat/Imports (%)	69	61	70	69	66	76	75	70	68	66	63

	2008	2009	2010	2011	2012	2013	2014	2015	2016	2017	2018
Yerli/Local	6.801	3.590	4.216	8.786	4.380	5.890	3.946	5.777	4.815	4.988	4.136
İthal/Imports	6.138	2.843	3.285	6.238	4.088	3.798	4.356	4.340	4.540	4.646	4.329
Toplam/Total	12.939	6.433	7.501	15.024	8.468	9.688	8.302	10.117	9.355	9.634	8.465
İthalat/Imports (%)	47	44	44	42	48	39	52	43	49	48	51



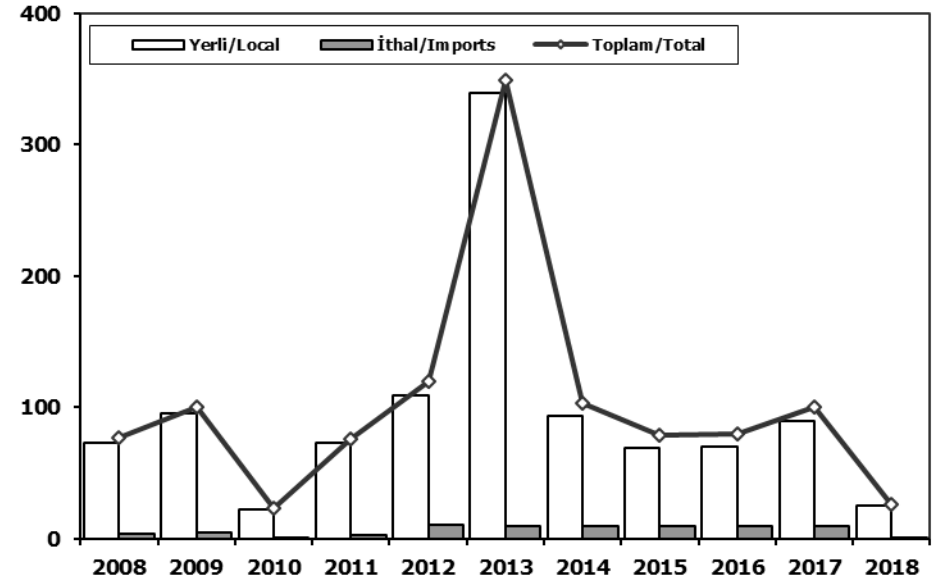
## Ağır Ticari Araçlar Pazarı (2008-2018 Ocak)

### HCV Market (2008-2018 January)



## Otobüs Pazarı (2008-2018 Ocak)

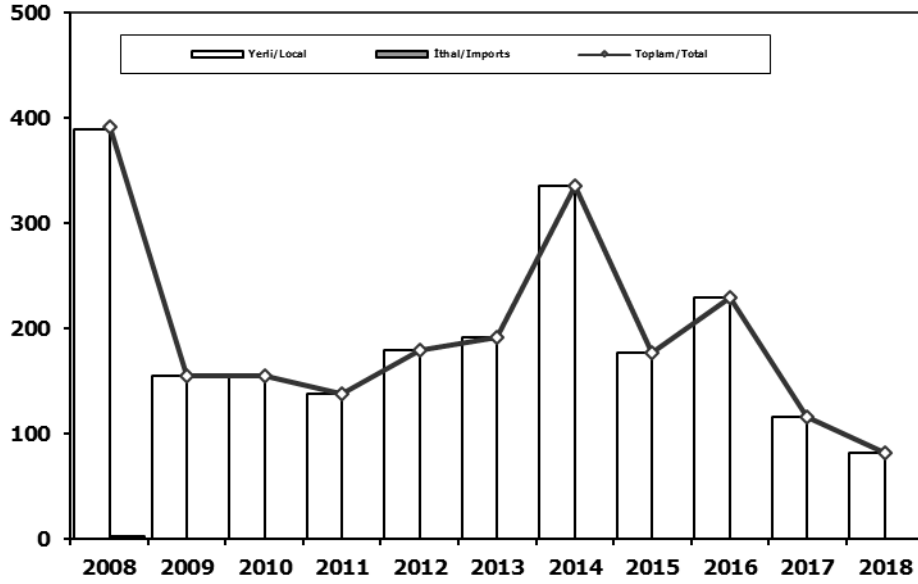
### Bus Market (2008-2018 January)



	2008	2009	2010	2011	2012	2013	2014	2015	2016	2017	2018		2008	2009	2010	2011	2012	2013	2014	2015	2016	2017	2018
<b>Yerli/Local</b>	1.794	812	781	1.602	1.168	1.258	1.241	1.446	558	539	557	<b>Yerli/Local</b>	73	95	22	73	109	339	93	69	70	90	25
<b>İthal/Imports</b>	471	213	174	1.164	506	359	314	515	469	284	420	<b>İthal/Imports</b>	4	5	1	3	11	10	10	10	10	10	1
<b>Toplam/Total</b>	2.265	1.025	955	2.766	1.674	1.617	1.555	1.961	1.027	823	977	<b>Toplam/Total</b>	77	100	23	76	120	349	103	79	80	100	26
<b>İthalat/Imports (%)</b>	21	21	18	42	30	22	20	26	46	35	43	<b>İthalat/Imports (%)</b>	5	5	4	4	9	3	10	13	13	10	4

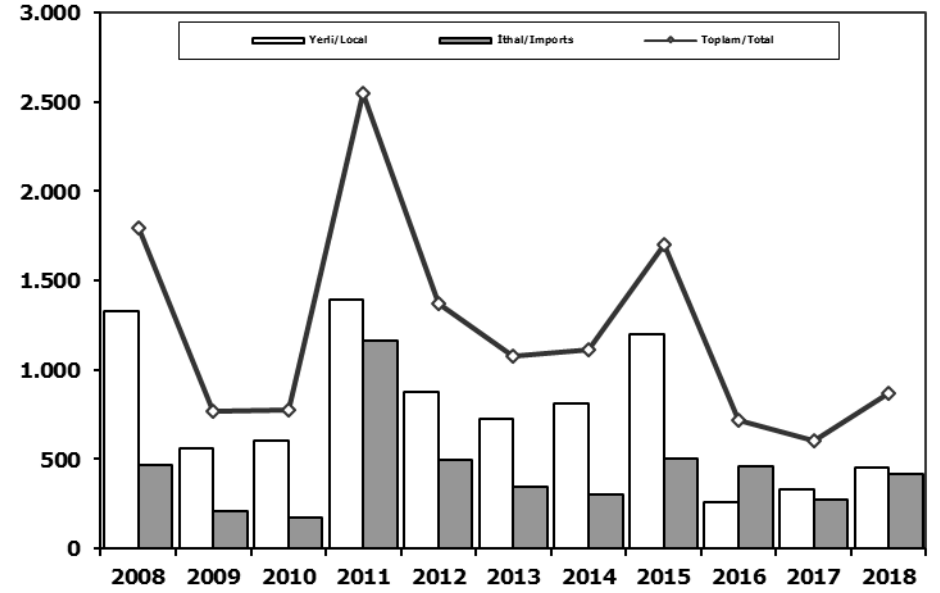
## Midibüs Pazarı (2008-2018 Ocak) (7-9 mt / 25-35 Kişilik)

### Midibus Market (2008-2018 January) (7-9 mt / 25-35 Passengers)



## Kamyon Pazarı (2008-2018 Ocak)

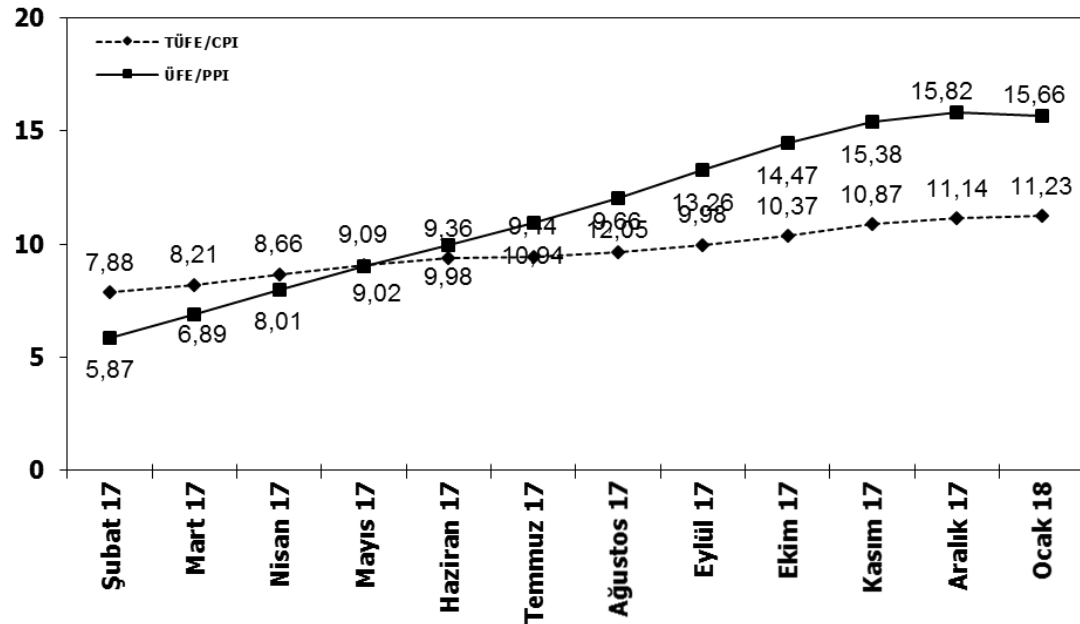
### Truck Market (2008-2018 January)



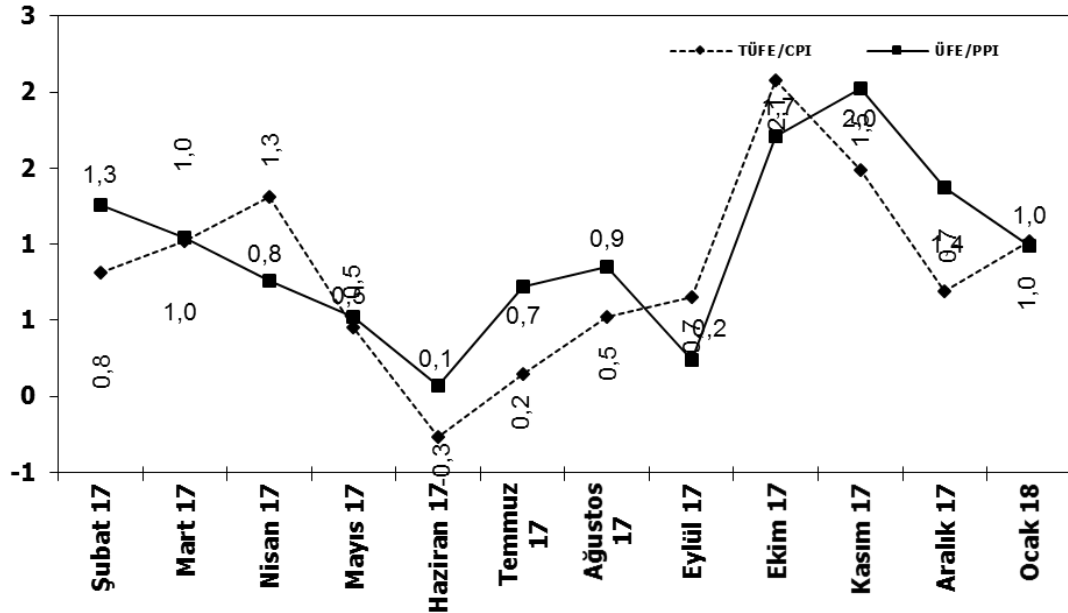
	2008	2009	2010	2011	2012	2013	2014	2015	2016	2017	2018
Yerli/Local	389	154	155	138	179	191	335	177	229	116	82
İthal/Imports	2	0	0	0	0	0	0	0	0	0	0
Toplam/Total	391	154	155	138	179	191	335	177	229	116	82
İthalat/Imports (%)	1	0	0	0	0	0	0	0	0	0	0

	2008	2009	2010	2011	2012	2013	2014	2015	2016	2017	2018
Yerli/Local	1.332	563	604	1.391	880	728	813	1.200	259	333	450
İthal/Imports	465	208	173	1.161	495	349	304	505	459	274	419
Toplam/Total	1.797	771	777	2.552	1.375	1.077	1.117	1.705	718	607	869
İthalat/Imports (%)	26	27	22	45	36	32	27	30	64	45	48

## TÜFE ve ÜFE'nin 12 Aylık Ort. Değişimi (%) CPI and PPI 12 Months Avr. Changes (%)



## TÜFE ve ÜFE'nin Aylık Değişimi (%) CPI and PPI Monthly Changes (%)





**2018 YILI İTHAL OTOMOBİL SATIŞLARI / P.Cars Import 2018**

	2017 TOPLAMI 2017 Total	1	2	3	4	5	6	7	8	9	10	11	12	2018 TOPLAMI 2018 Total
VOLKSWAGEN	89.688	2.497												2.497
SKODA	24.679	1.564												1.564
OPEL	44.707	1.327												1.327
HYUNDAI	26.841	1.282												1.282
MERCEDES-BENZ	25.588	1.190												1.190
RENAULT	37.021	1.013												1.013
AUDI	21.585	1.013												1.013
DACIA	41.914	937												937
FORD	33.671	920												920
PEUGEOT	29.981	809												809
NISSAN	32.043	767												767
SEAT	16.064	663												663
BMW	19.564	626												626
KIA	10.937	431												431
CITROEN	14.709	407												407
TOYOTA	7.297	309												309
VOLVO	4.470	250												250
HONDA	7.250	207												207
JEEP	2.357	101												101
SUBARU	1.726	86												86
LAND ROVER	1.879	84												84
SUZUKI	4.316	67												67
MAZDA	1.412	62												62
FIAT	2.157	56												56
MINI	1.480	55												55
PORSCHE	670	43												43
SSANGYONG	362	26												26
MITSUBISHI	354	12												12
JAGUAR	339	12												12
ALFA ROMEO	320	5												5
MASERATI	76	4												4
INFINITI	122	3												3
LEXUS	101	2												2
ASTON MARTIN	25	1												1
FERRARI	16	1												1
DS	119	0												0
SMART	105	0												0
BENTLEY	16	0												0
LAMBORGHINI	7	0												0
<b>TOPLAM</b>	<b>505.968</b>	<b>16.832</b>	0	0	0	0	0	0	0	0	0	0	0	<b>16.832</b>

**2018 YILI İTHAL HAFİF TİCARİ ARAÇ SATIŞLARI / Light Commercial Vehicles Import 2018**

	2017 TOPLAMI 2017 Total	1	2	3	4	5	6	7	8	9	10	11	12	2018 TOPLAMI 2018 Total
VOLKSWAGEN	27.793	1.630												1.630
RENAULT	16.822	512												512
MERCEDES-BENZ	9.043	480												480
DACIA	6.456	254												254
TOYOTA	4.551	210												210
PEUGEOT	10.458	178												178
FORD	4.188	174												174
FIAT	6.582	163												163
MITSUBISHI	3.527	158												158
IVECO	2.566	122												122
HYUNDAI	2.984	119												119
KIA	3.591	111												111
NISSAN	2.779	95												95
CITROEN	8.023	94												94
SUZU	302	24												24
SSANGYONG	255	5												5
<b>TOPLAM</b>	<b>109.920</b>	<b>4.329</b>	0	0	0	0	0	0	0	0	0	0	0	<b>4.329</b>