



OTOMOTİV SANAYİİ DERNEĐİ
AUTOMOTIVE MANUFACTURERS ASSOCIATION

OTOMOTİV SEKTÖRÜ AYLIK DEĐERLENDİRME RAPORU MAYIS 2018

AUTOMOTIVE INDUSTRY MONTHLY REPORT
May 2018

OSD "OICA" Üyesidir



OSD is a Member of "OICA"

	5 - 2017	5 - 2018	%	1 - 5 / 2017	1 - 5 / 2018	%	6/2016 - 5/2017	6/2017 - 5/2018	%
Otomobil Üretimi/P.Cars Production	104.652	95.677	-8,6	506.743	471.634	-6,9	1.098.440	1.107.797	0,9
Toplam Üretim/Total Production	154.757	148.304	-4,2	728.003	711.999	-2,2	1.619.257	1.679.727	3,7
Otomobil Pazarı/P.Cars Market	65.799	57.227	-13,0	239.760	234.645	-2,1	729.327	717.644	-1,6
Toplam Pazar/Total Market	87.476	74.762	-14,5	325.191	311.566	-4,2	976.254	966.652	-1,0
Otomobil İthalatı/P.Cars Import	45.135	38.219	-15,3	165.890	156.643	-5,6	534.824	496.721	-7,1
Toplam İthalat/Total Import	55.583	46.419	-16,5	206.908	193.564	-6,4	650.923	611.065	-6,1
Otomobil İhracatı/P.Cars Export	87.536	77.297	-11,7	424.918	392.522	-7,6	894.977	888.958	-0,7
Toplam İhracat/Total Export	125.688	116.325	-7,4	598.314	577.820	-3,4	1.285.976	1.312.300	2,0
Otomobil İhracatı(\$)/P.Cars Export (\$)	1.093.160.688	1.051.002.671	-3,9	5.068.726.037	5.588.080.894	10,2	10.549.572.988	12.309.932.618	16,7
Toplam İhracat(\$)/Total Export (\$)*	2.602.605.129	2.826.848.828	8,6	12.036.785.943	14.170.487.769	17,7	26.545.208.100	31.227.273.273	17,6

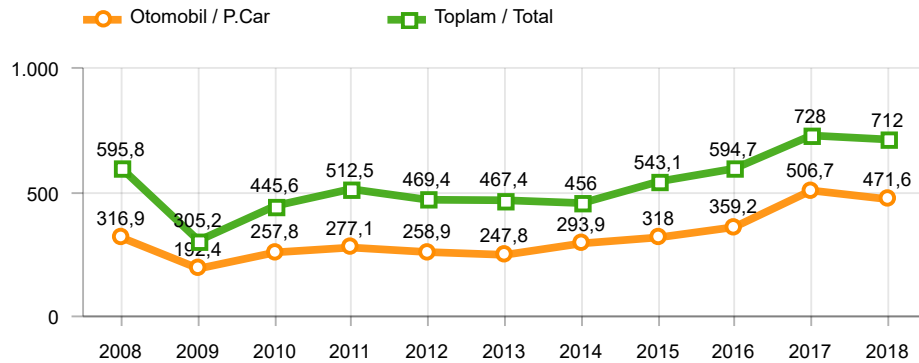
Parametreler/Parameters	5 - 2017	5 - 2018	%	1 - 5 / 2017	1 - 5 / 2018	%	6/2016 - 5/2017	6/2017 - 5/2018	%
ÜFE / PPI	0,5	3,8	-	7,7	12,1	-	9,0	15,8	-
TÜFE / CPI	0,5	1,6	-	6,2	6,4	-	9,1	11,1	-
Sanayi Endeksi / Industry Index	0,6	3,4	-	8,2	11,6	-	10,6	17,0	-
Dolar \$ **	3,5	4,3	21,7	3,6	3,9	8,8	3,3	3,8	13,6
Euro € **	3,9	5,1	30,4	3,9	4,8	23,2	3,6	4,5	24,5
Japon Yeni ¥ **	3,1	3,9	24,2	3,2	3,6	13,2	3,0	3,4	12,3

*Toplam Sanayi / Total Industry Including Components

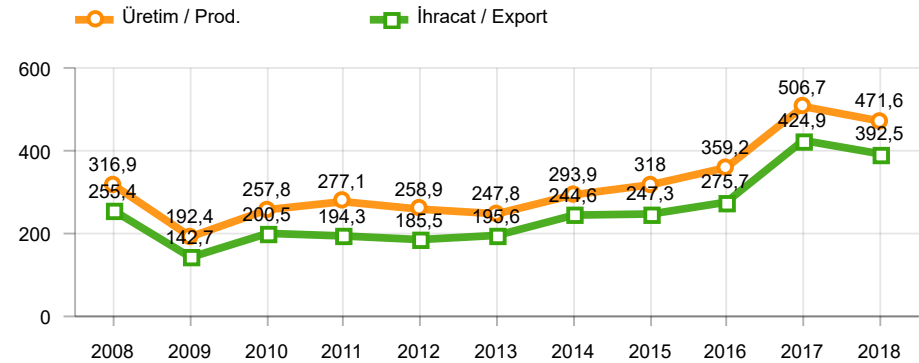
** Ortalama Değerler / Average Values

Araç Tipleri / Types	5 / 2017	5 / 2018	5 % Değişim	1-5 / 2017	1-5 / 2018	1-5 % Değişim
OTOMOBİL / Pass.Car	104.652	95.677	-8,6	506.743	471.634	-6,9
OTOMOBİL Toplam / Pass.Car Total	104.652	95.677	-8,6	506.743	471.634	-6,9
B.KAMYON / H. Truck	1.598	2.421	51,5	6.801	11.049	62,5
K.KAMYON / L.Truck	224	156	-30,4	1.359	1.302	-4,2
KAMYONET / Pick Up	42.058	43.690	3,9	185.954	199.688	7,4
OTOBÜS / Bus	799	834	4,4	3.881	3.697	-4,7
MİNİBÜS / Minibus	5.207	5.059	-2,8	21.995	22.851	3,9
MİDİBÜS / Midibus	219	467	113,2	1.270	1.778	40,0
TİCARİ ARAÇLAR Toplam / Commercial Vehicles Total	50.105	52.627	5,0	221.260	240.365	8,6
TAŞIT ARAÇLARI Toplam / Motor Vehicles Total	154.757	148.304	-4,2	728.003	711.999	-2,2
TRAKTÖR / F.Tractor	4.216	4.229	0,3	20.572	22.611	9,9
TRAKTÖR Toplam / F.Tractor Total	4.216	4.229	0,3	20.572	22.611	9,9
GENEL TOPLAM / Grand Total	158.973	152.533	-4,1	748.575	734.610	-1,9

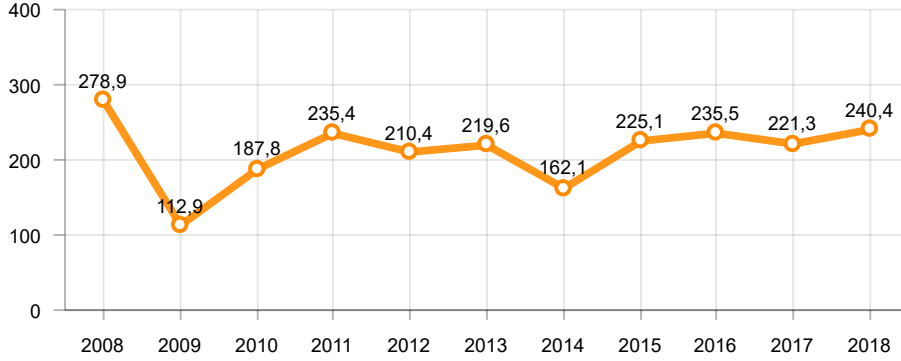
Toplam Üretim ve Otomobil Üretimi (x1000)(OCAK - MAYIS)
Total & P.Cars Production (x1000)(January - May)



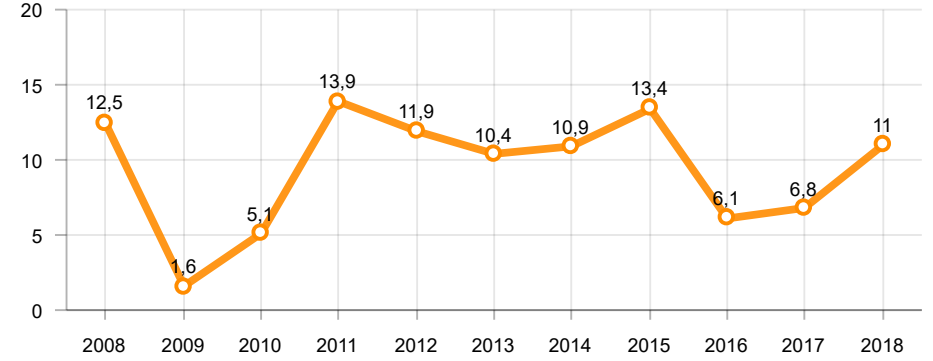
Otomobil Üretimi ve İhracat (x1000)(OCAK - MAYIS)
P.Cars Production & Exports (x1000)(January - May)



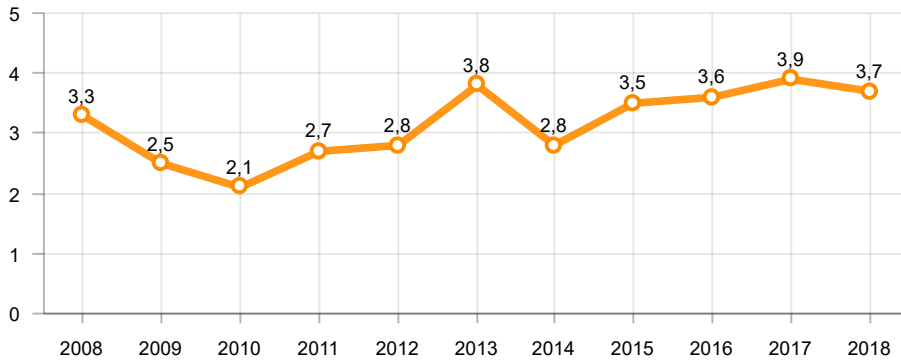
Ticari Araç Üretimi (x1000)(OCAK - MAYIS)
Commercial Vehicle Production (x1000)(January - May)



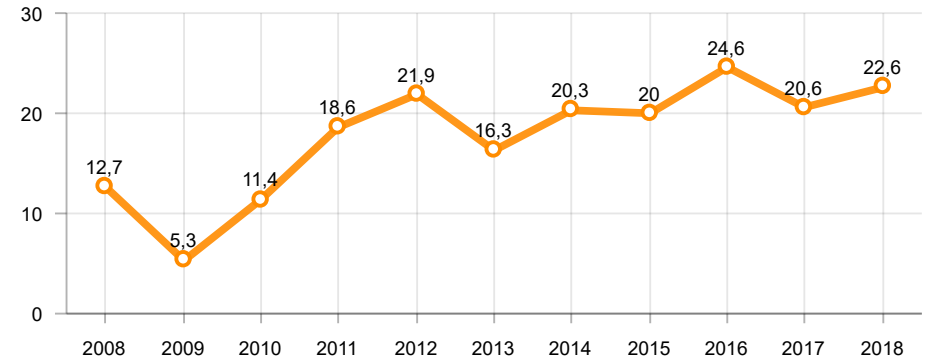
Büyük Kamyon Üretimi (x1000)(OCAK - MAYIS)
Heavy Truck Production (x1000)(January - May)

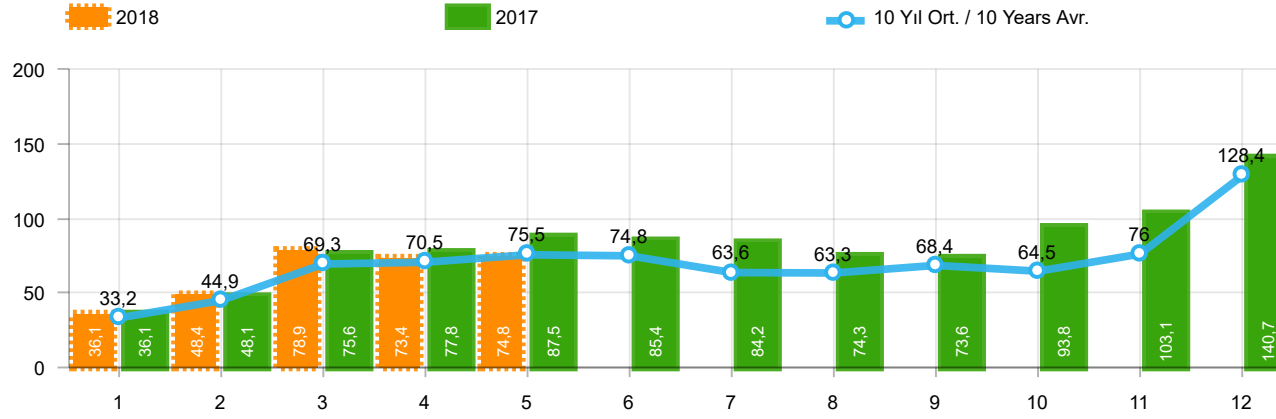


Otobüs Üretimi (x1000)(OCAK - MAYIS)
Bus Production (x1000)(January - May)



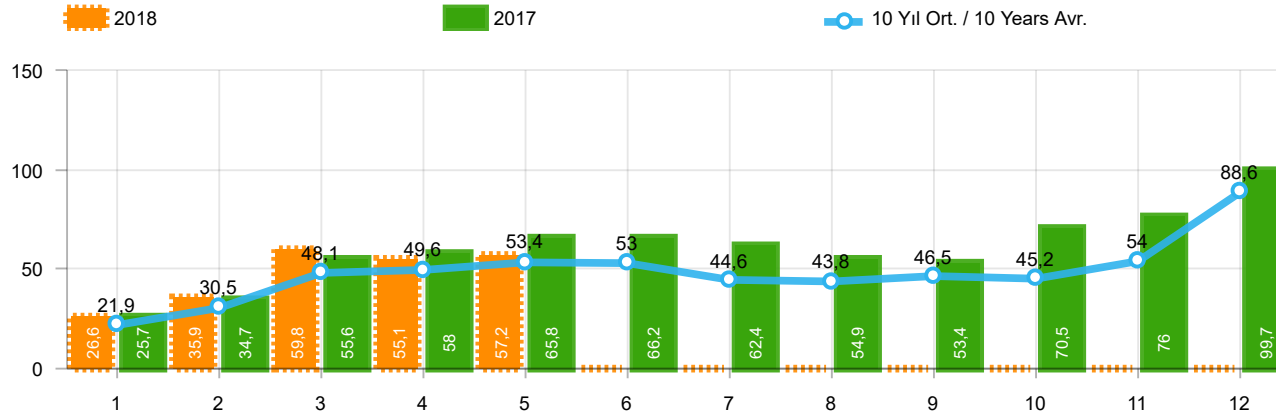
Traktör Üretimi (x1000)(OCAK - MAYIS)
F. Tractor Production (x1000)(January - May)





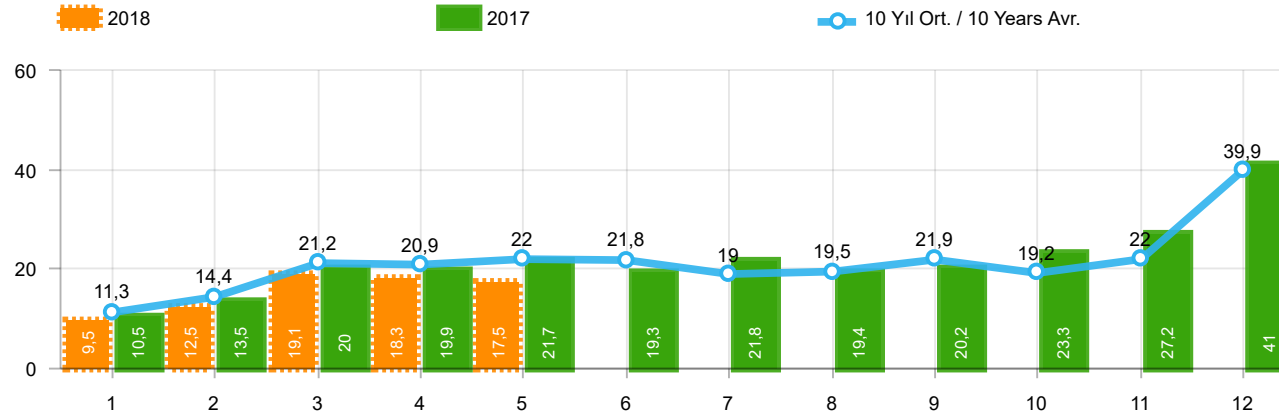
Aylar / Months	10 Yıl Ort / 10 Years Avr.	2018	%
1	33.218	36.107	8,7
2	44.859	48.391	7,9
3	69.303	78.915	13,9
4	70.466	73.391	4,2
5	75.458	74.762	-0,9
TOPLAM	293.304	311.566	6,2

Yıl / Year	1	2	3	4	5	6	7	8	9	10	11	12	1-5 Toplam / Total	Toplam / Total	1-5 Yerli / Local	1-5 İthal / Import	İthal Oran / Import %
2008	33.792	38.121	56.814	50.967	51.627	49.393	44.692	46.592	46.829	35.147	28.152	44.418	231.321	526.544	100.740	130.581	56,5
2009	20.631	22.846	56.531	54.426	64.887	63.102	30.246	37.092	83.403	22.117	29.202	91.386	219.321	575.869	93.390	125.931	57,4
2010	21.050	32.313	53.828	57.079	61.628	63.390	63.718	64.645	66.601	76.780	77.406	154.734	225.898	793.172	95.675	130.223	57,6
2011	47.658	62.348	83.333	82.071	85.093	85.863	65.364	61.378	63.643	72.640	67.195	134.281	360.503	910.867	144.792	215.711	59,8
2012	31.219	43.827	68.957	66.014	74.820	74.781	65.122	60.848	73.197	62.677	75.045	121.113	284.837	817.620	110.720	174.117	61,1
2013	37.140	50.931	72.688	77.015	85.421	77.771	74.726	67.383	71.037	60.399	83.017	135.596	323.195	893.124	101.235	221.960	68,7
2014	34.225	37.308	50.964	56.766	61.909	63.952	62.206	62.839	70.180	69.259	83.937	153.941	241.172	807.486	78.717	162.455	67,4
2015	36.576	58.533	89.121	95.431	85.145	90.463	86.625	84.683	66.622	66.520	88.043	163.432	364.806	1.011.194	128.798	236.008	64,7
2016	33.740	54.223	85.214	87.041	96.576	94.203	59.505	73.269	69.068	85.251	124.839	144.928	356.794	1.007.857	119.501	237.293	66,5
2017	36.146	48.141	75.580	77.848	87.476	85.416	84.189	74.295	73.602	93.806	103.121	140.657	325.191	980.277	118.283	206.908	63,6
2018	36.107	48.391	78.915	73.391	74.762								311.566	311.566	118.002	193.564	62,1



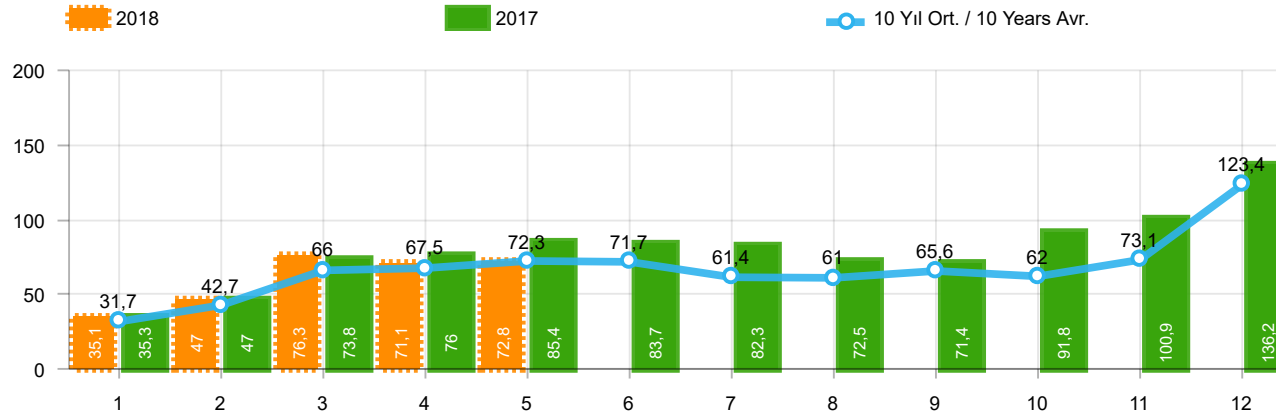
Aylar / Months	10 Yıl Ort. / 10 Years Avr.	2018	%
1	21.905	26.611	21,5
2	30.458	35.901	17,9
3	48.088	59.798	24,4
4	49.614	55.108	11,1
5	53.417	57.227	7,1
TOPLAM	203.481	234.645	15,3

Yıl / Year	1	2	3	4	5	6	7	8	9	10	11	12	1-5 Toplam / Total	Toplam / Total	1-5 Yerli / Local	1-5 İthal / Import	İthal Oran / Import %
2008	18.588	21.196	34.147	30.313	31.477	28.724	25.530	26.102	27.053	19.788	17.201	25.879	135.721	305.998	45.725	89.996	66,3
2009	13.173	14.492	40.622	36.202	44.188	41.019	16.637	22.537	52.162	13.828	17.781	57.178	148.677	369.819	49.154	99.523	66,9
2010	12.594	20.651	33.958	36.549	40.467	42.086	41.399	42.222	42.477	47.859	50.061	99.461	144.219	509.784	46.102	98.117	68,0
2011	29.868	39.004	54.023	53.835	56.302	56.714	43.518	38.875	39.964	47.508	44.951	88.957	233.032	593.519	71.737	161.295	69,2
2012	21.077	29.189	47.270	45.645	50.460	50.849	44.531	41.236	49.360	43.440	52.297	80.926	193.641	556.280	57.141	136.500	70,5
2013	25.835	36.814	51.785	56.999	62.383	58.290	55.712	51.611	52.925	46.985	64.117	101.199	233.816	664.655	50.678	183.138	78,3
2014	24.368	27.167	37.812	42.769	46.379	47.278	46.602	45.131	49.262	50.814	59.695	110.054	178.495	587.331	44.465	134.030	75,1
2015	24.498	40.817	61.676	70.211	62.878	67.766	64.218	61.753	47.088	47.954	62.397	114.340	260.080	725.596	66.708	193.372	74,4
2016	23.358	40.588	63.975	65.618	73.832	71.111	45.566	53.977	51.340	63.746	95.783	108.044	267.371	756.938	71.260	196.111	73,3
2017	25.689	34.658	55.616	57.998	65.799	66.164	62.384	54.890	53.423	70.488	75.956	99.694	239.760	722.759	73.870	165.890	69,2
2018	26.611	35.901	59.798	55.108	57.227								234.645	234.645	78.002	156.643	66,8



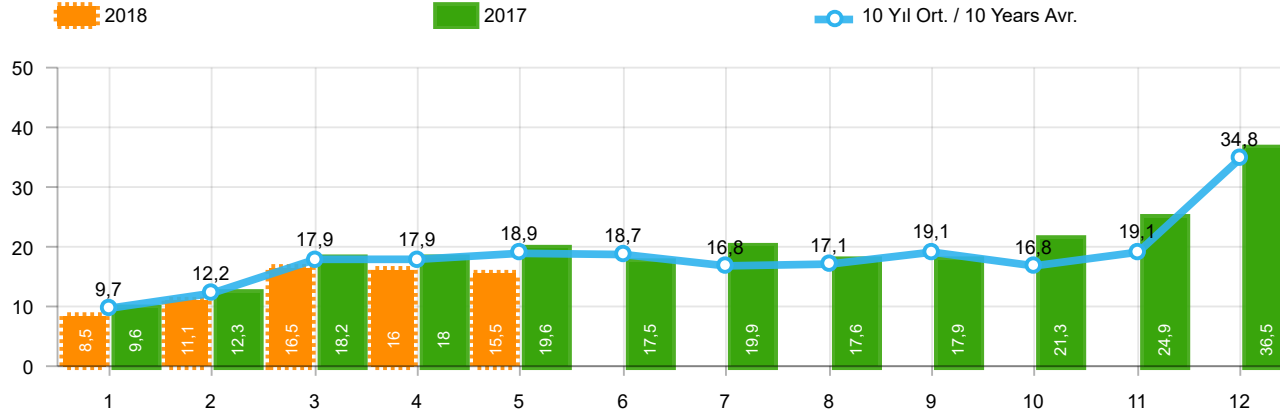
Aylar / Months	10 Yıl Ort / 10 Years Avr.	2018	%
1	11.313	9.496	-16,1
2	14.402	12.490	-13,3
3	21.215	19.117	-9,9
4	20.852	18.283	-12,3
5	22.042	17.535	-20,4
TOPLAM	89.823	76.921	-14,4

Yıl / Year	1	2	3	4	5	6	7	8	9	10	11	12	1-5 Toplam / Total	Toplam / Total	1-5 Yerli / Local	1-5 İthal / Import	İthal Oran / Import %
2008	15.204	16.925	22.667	20.654	20.150	20.669	19.162	20.490	19.776	15.359	10.951	18.539	95.600	220.546	55.015	40.585	42,5
2009	7.458	8.354	15.909	18.224	20.699	22.083	13.609	14.555	31.241	8.289	11.421	34.208	70.644	206.050	44.236	26.408	37,4
2010	8.456	11.662	19.870	20.530	21.161	21.304	22.319	22.423	24.124	28.921	27.345	55.273	81.679	283.388	49.573	32.106	39,3
2011	17.790	23.344	29.310	28.236	28.791	29.149	21.846	22.503	23.679	25.132	22.244	45.324	127.471	317.348	73.055	54.416	42,7
2012	10.142	14.638	21.687	20.369	24.360	23.932	20.591	19.612	23.837	19.237	22.748	40.187	91.196	261.340	53.579	37.617	41,2
2013	11.305	14.117	20.903	20.016	23.038	19.481	19.014	15.772	18.112	13.414	18.900	34.397	89.379	228.469	50.557	38.822	43,4
2014	9.857	10.141	13.152	13.997	15.530	16.674	15.604	17.708	20.918	18.445	24.242	43.887	62.677	220.155	34.252	28.425	45,4
2015	12.078	17.716	27.445	25.220	22.267	22.697	22.407	22.930	19.534	18.566	25.646	49.092	104.726	285.598	62.090	42.636	40,7
2016	10.382	13.635	21.239	21.423	22.744	23.092	13.939	19.292	17.728	21.505	29.056	36.884	89.423	250.919	48.241	41.182	46,1
2017	10.457	13.483	19.964	19.850	21.677	19.252	21.805	19.405	20.179	23.318	27.165	40.963	85.431	257.518	44.413	41.018	48,0
2018	9.496	12.490	19.117	18.283	17.535								76.921	76.921	40.000	36.921	48,0



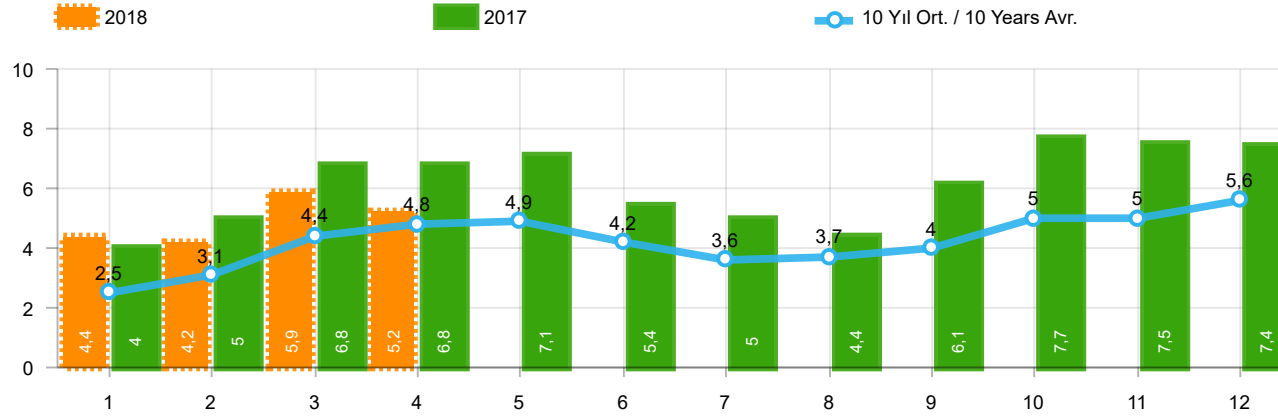
Aylar / Months	10 Yıl Ort / 10 Years Avr.	2018	%
1	31.651	35.076	10,8
2	42.660	47.009	10,2
3	66.022	76.345	15,6
4	67.529	71.126	5,3
5	72.313	72.755	0,6
TOPLAM	280.175	302.311	7,9

Yıl / Year	1	2	3	4	5	6	7	8	9	10	11	12	1-5 Toplam / Total	Toplam / Total	1-5 Yerli / Local	1-5 İthal / Import	İthal Oran / Import %
2008	31.527	35.251	53.649	47.701	48.598	46.324	42.156	43.670	43.932	32.884	26.253	42.078	216.726	494.023	89.694	127.032	58,6
2009	19.606	21.742	55.111	52.640	63.191	61.067	28.845	35.609	81.397	21.033	27.962	88.923	212.290	557.126	87.908	124.382	58,6
2010	20.095	31.172	51.769	54.946	59.377	60.896	61.345	61.764	63.814	73.404	73.962	148.369	217.359	760.913	89.649	127.710	58,8
2011	44.892	58.663	78.403	77.695	80.646	81.573	63.044	58.406	60.129	69.421	63.657	127.910	340.299	864.439	130.691	209.608	61,6
2012	29.545	41.324	64.884	62.949	70.863	71.067	62.304	58.148	69.629	59.938	71.710	115.400	269.565	777.761	99.558	170.007	63,1
2013	35.523	48.307	68.774	73.575	81.468	74.096	71.596	65.043	67.963	58.014	79.301	129.718	307.647	853.378	89.334	218.313	71,0
2014	32.670	35.021	47.581	53.305	58.121	60.163	59.907	60.199	66.531	66.573	80.621	146.989	226.698	767.681	67.992	158.706	70,0
2015	34.615	55.331	83.302	91.602	81.542	86.158	83.836	82.577	64.025	64.255	84.601	156.173	346.392	968.017	115.859	230.533	66,6
2016	32.713	52.825	82.948	84.887	93.904	91.540	58.533	71.556	67.593	83.000	122.309	141.912	347.277	983.720	113.643	233.634	67,3
2017	35.323	46.965	73.802	75.988	85.422	83.658	82.297	72.536	71.352	91.752	100.859	136.240	317.500	956.194	112.998	204.502	64,4
2018	35.076	47.009	76.345	71.126	72.755								302.311	302.311	112.694	189.617	62,7



Aylar / Months	10 Yıl Ort. / 10 Years Avr.	2018	%
1	9.746	8.465	-13,1
2	12.203	11.108	-9,0
3	17.934	16.547	-7,7
4	17.915	16.018	-10,6
5	18.897	15.528	-17,8
TOPLAM	76.694	67.666	-11,8

Yıl / Year	1	2	3	4	5	6	7	8	9	10	11	12	1-5 Toplam / Total	Toplam / Total	1-5 Yerli / Local	1-5 İthal / Import	İthal Oran / Import %
2008	12.939	14.055	19.502	17.388	17.121	17.600	16.626	17.568	16.879	13.096	9.052	16.199	81.005	188.025	43.969	37.036	45,7
2009	6.433	7.250	14.489	16.438	19.003	20.048	12.208	13.072	29.235	7.205	10.181	31.745	63.613	187.307	38.754	24.859	39,1
2010	7.501	10.521	17.811	18.397	18.910	18.810	19.946	19.542	21.337	25.545	23.901	48.908	73.140	251.129	43.547	29.593	40,5
2011	15.024	19.659	24.380	23.860	24.344	24.859	19.526	19.531	20.165	21.913	18.706	38.953	107.267	270.920	58.954	48.313	45,0
2012	8.468	12.135	17.614	17.304	20.403	20.218	17.773	16.912	20.269	16.498	19.413	34.474	75.924	221.481	42.417	33.507	44,1
2013	9.688	11.493	16.989	16.576	19.085	15.806	15.884	13.432	15.038	11.029	15.184	28.519	73.831	188.723	38.656	35.175	47,6
2014	8.302	7.854	9.769	10.536	11.742	12.885	13.305	15.068	17.269	15.759	20.926	36.935	48.203	180.350	23.527	24.676	51,2
2015	10.117	14.514	21.626	21.391	18.664	18.392	19.618	20.824	16.937	16.301	22.204	41.833	86.312	242.421	49.151	37.161	43,1
2016	9.355	12.237	18.973	19.269	20.072	20.429	12.967	17.579	16.253	19.254	26.526	33.868	79.906	226.782	42.383	37.523	47,0
2017	9.634	12.307	18.186	17.990	19.623	17.494	19.913	17.646	17.929	21.264	24.903	36.546	77.740	233.435	39.128	38.612	49,7
2018	8.465	11.108	16.547	16.018	15.528								67.666	67.666	34.692	32.974	48,7



Aylar / Months	10 Yıl Ort / 10 Years Avr.	2018	%
1	2.510	4.362	73,8
2	3.127	4.179	33,7
3	4.447	5.925	33,2
4	4.833	5.216	7,9
TOPLAM	14.916	19.682	32,0

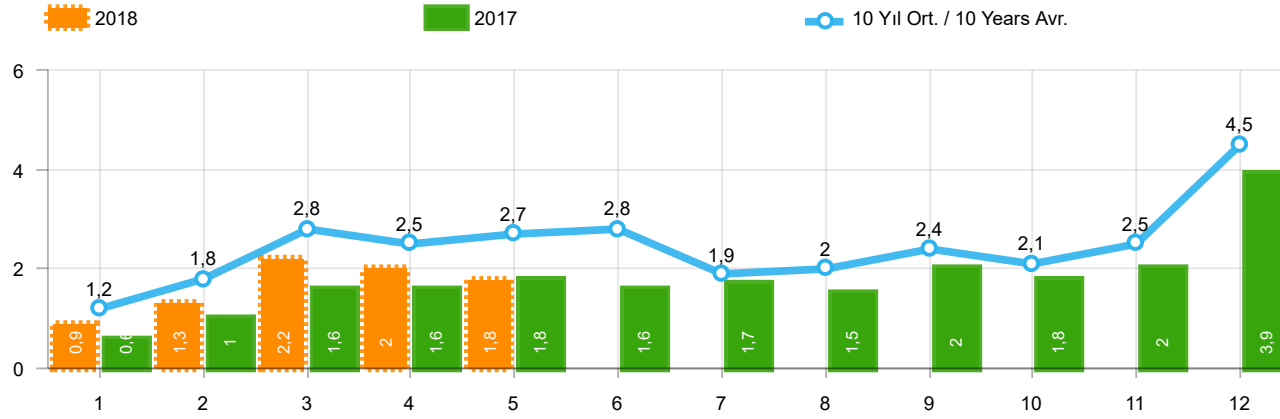
Yıl / Year	1	2	3	4	5	6	7	8	9	10	11	12	1-4 Toplam / Total	Toplam / Total
2008	2.770	1.855	3.395	3.081	2.769	2.400	2.232	2.485	1.856	1.773	1.305	1.101	11.101	27.022
2009	717	572	688	1.070	1.297	1.256	1.054	1.183	1.117	1.356	1.304	2.144	3.047	13.758
2010	1.111	1.991	2.330	3.039	2.567	2.638	1.965	3.019	2.806	4.424	3.978	6.168	8.471	36.036
2011	2.975	5.242	5.927	5.358	6.016	6.335	4.534	4.051	4.140	5.828	4.943	4.992	19.502	60.341
2012	2.362	1.983	4.348	6.579	6.273	4.569	3.837	3.158	3.618	4.027	4.807	4.757	15.272	50.318
2013	2.161	2.432	4.005	4.585	5.616	3.136	4.574	3.408	4.935	4.762	5.781	6.891	13.183	52.286
2014	2.169	3.512	4.476	4.905	5.094	5.028	4.233	4.920	5.619	5.743	6.250	7.409	15.062	59.358
2015	3.124	3.984	5.460	6.383	6.078	5.748	4.677	5.044	4.765	7.049	6.898	7.564	18.951	66.774
2016	3.739	4.731	7.067	6.546	6.575	5.543	3.833	5.134	4.945	7.372	7.090	7.603	22.083	70.178
2017	3.974	4.964	6.773	6.780	7.057	5.356	5.003	4.396	6.064	7.734	7.457	7.351	22.491	72.909
2018	4.362	4.179	5.925	5.216									19.682	19.682

Kaynak: TÜİK trafik kayıtları.

Rakamlar, son iki model yılına ait traktör tescillerinden oluşmaktadır.

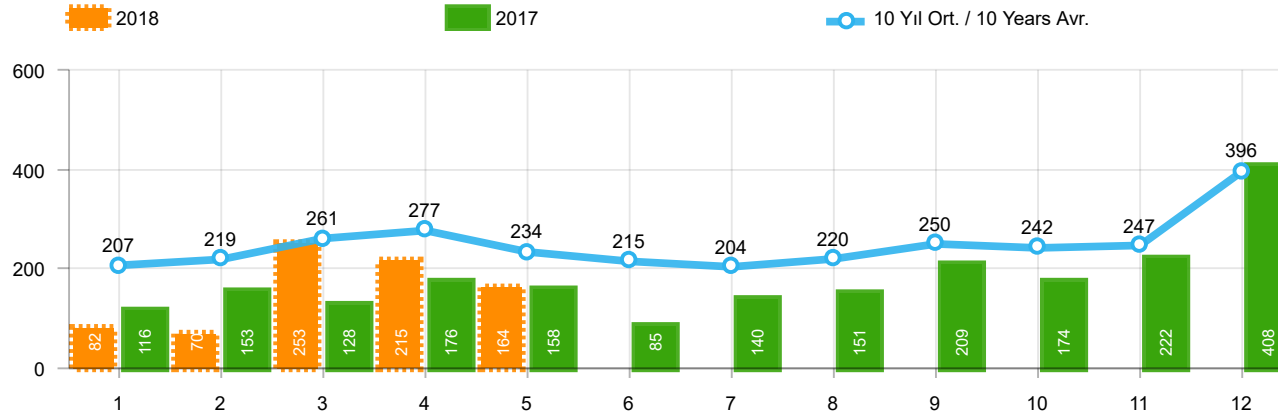
Source: Turkish Statistical Institute – Traffic registrations

Data represents the last two model year's farm tractors registration figures



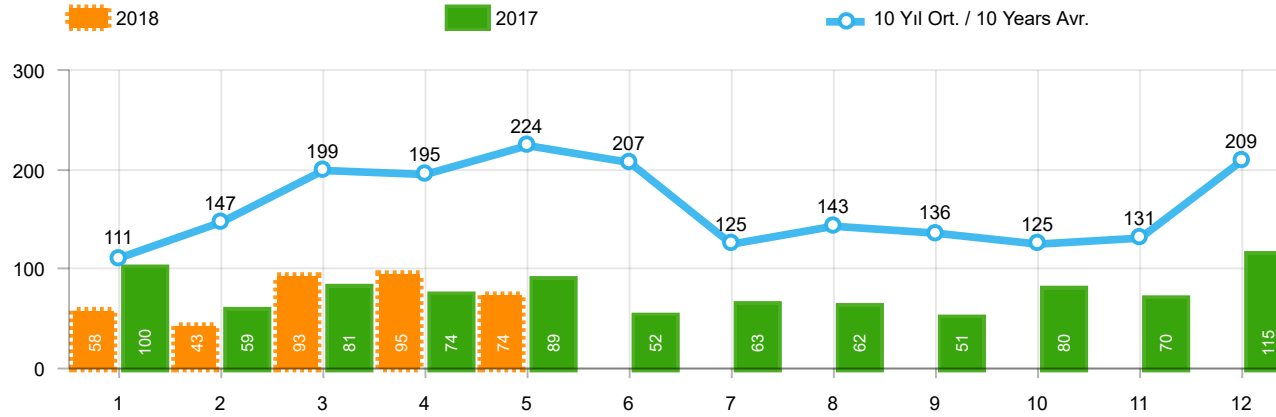
Aylar / Months	10 Yıl Ort. / 10 Years Avr.	2018	%
1	1.250	891	-28,7
2	1.833	1.269	-30,8
3	2.821	2.224	-21,2
4	2.464	1.955	-20,7
5	2.687	1.769	-34,2
TOPLAM	11.054	8.108	-26,7

Yıl / Year	1	2	3	4	5	6	7	8	9	10	11	12	1-5 Toplam / Total	Toplam / Total	1-5 Yerli / Local	1-5 İthal / Import	İthal Oran / Import %
2008	1.797	2.309	2.621	2.578	2.459	2.526	2.067	2.377	2.390	1.790	1.512	1.834	11.764	26.260	8.276	3.488	29,6
2009	771	759	1.034	1.342	1.355	1.651	1.156	1.205	1.780	866	981	2.015	5.261	14.915	3.871	1.390	26,4
2010	777	968	1.772	1.807	1.966	2.205	2.093	2.446	2.444	3.071	3.136	5.677	7.290	28.362	4.822	2.468	33,9
2011	2.552	3.292	4.418	3.754	3.803	3.749	1.996	2.478	3.081	2.774	3.108	5.787	17.819	40.792	11.754	6.065	34,0
2012	1.375	2.159	3.595	2.697	3.321	3.250	2.450	2.277	2.991	2.244	3.006	5.000	13.147	34.365	9.086	4.061	30,9
2013	1.077	1.931	3.127	2.720	3.145	2.951	2.411	1.845	2.554	1.801	3.173	5.025	12.000	31.760	8.423	3.577	29,8
2014	1.117	1.949	2.818	3.092	3.405	3.438	2.083	2.390	3.281	2.494	3.028	6.313	12.381	35.408	8.682	3.699	29,9
2015	1.705	2.841	5.270	3.208	3.190	3.824	2.463	1.798	2.244	1.848	2.902	6.540	16.214	37.833	10.789	5.425	33,5
2016	718	1.154	1.984	1.835	2.420	2.358	830	1.529	1.204	1.962	2.123	2.640	8.111	20.757	4.502	3.609	44,5
2017	607	964	1.569	1.610	1.807	1.621	1.689	1.546	1.990	1.800	1.970	3.894	6.557	21.067	4.201	2.356	35,9
2018	891	1.269	2.224	1.955	1.769								8.108	8.108	4.166	3.942	48,6



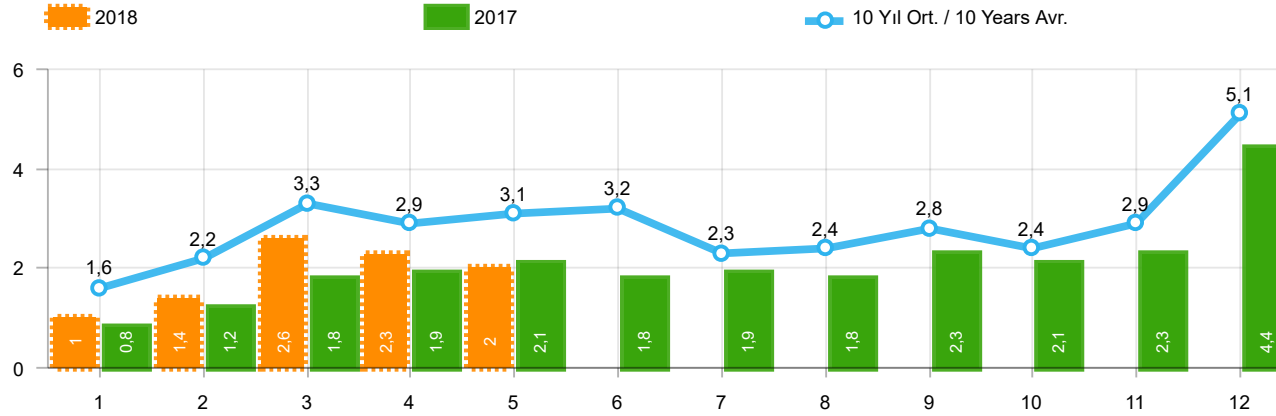
Aylar / Months	10 Yıl Ort. / 10 Years Avr.	2018	%
1	207	82	-60,3
2	219	70	-68,1
3	261	253	-2,9
4	277	215	-22,5
5	234	164	-29,9
TOPLAM	1.198	784	-34,5

Yıl / Year	1	2	3	4	5	6	7	8	9	10	11	12	1-5 Toplam / Total	Toplam / Total
2008	391	476	436	512	419	331	368	380	341	352	246	270	2.234	4.522
2009	154	124	160	220	174	198	160	175	168	143	206	323	832	2.205
2010	155	131	185	167	140	138	129	246	236	206	202	437	778	2.372
2011	138	195	294	316	280	258	211	305	301	276	260	270	1.223	3.104
2012	179	257	277	229	257	239	216	249	325	269	189	398	1.199	3.084
2013	191	268	289	276	283	241	367	235	305	392	415	697	1.307	3.959
2014	335	265	326	280	206	223	161	174	229	140	226	454	1.412	3.019
2015	177	213	350	425	288	306	195	154	231	283	240	450	1.453	3.312
2016	229	112	161	172	133	132	95	130	150	187	264	254	807	2.019
2017	116	153	128	176	158	85	140	151	209	174	222	408	731	2.120
2018	82	70	253	215	164								784	784



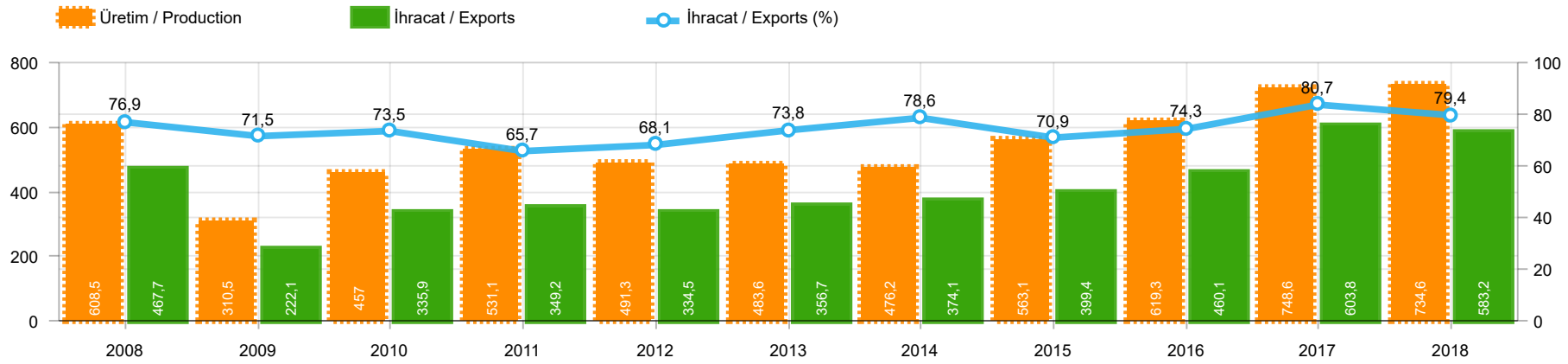
Aylar / Months	10 Yıl Ort / 10 Years Avr.	2018	%
1	111	58	-47,6
2	147	43	-70,7
3	199	93	-53,3
4	195	95	-51,4
5	224	74	-67,0
TOPLAM	877	363	-58,6

Yıl / Year	1	2	3	4	5	6	7	8	9	10	11	12	1-5 Toplam / Total	Toplam / Total	1-5 Yerli / Local	1-5 İthal / Import	İthal Oran / Import %
2008	77	85	108	176	151	212	101	165	166	121	141	236	597	1.739	546	51	8,5
2009	100	221	226	224	167	186	85	103	58	75	53	125	938	1.623	779	159	17,0
2010	23	42	102	159	145	151	151	189	107	99	106	251	471	1.525	426	45	9,6
2011	76	198	218	306	364	283	113	189	132	169	170	314	1.162	2.532	1.124	38	3,3
2012	120	87	201	139	379	225	152	174	252	226	140	315	926	2.410	877	49	5,3
2013	349	425	498	444	525	483	352	260	215	192	128	156	2.241	4.027	2.171	70	3,1
2014	103	73	239	89	177	128	55	76	139	52	62	185	681	1.378	631	50	7,3
2015	79	148	199	196	125	175	131	154	122	134	300	269	747	2.032	697	50	6,7
2016	80	132	121	147	119	173	47	54	121	102	143	122	599	1.361	549	50	8,3
2017	100	59	81	74	89	52	63	62	51	80	70	115	403	896	353	50	12,4
2018	58	43	93	95	74								363	363	358	5	1,4



Aylar / Months	10 Yıl Ort / 10 Years Avr.	2018	%
1	1.567	1.031	-34,2
2	2.199	1.382	-37,2
3	3.281	2.570	-21,7
4	2.937	2.265	-22,9
5	3.145	2.007	-36,2
TOPLAM	13.129	9.255	-29,5

Yıl / Year	1	2	3	4	5	6	7	8	9	10	11	12	1-5 Toplam / Total	Toplam / Total	1-5 Yerli / Local	1-5 İthal / Import	İthal Oran / Import %
2008	2.265	2.870	3.165	3.266	3.029	3.069	2.536	2.922	2.897	2.263	1.899	2.340	14.595	32.521	11.046	3.549	24,3
2009	1.025	1.104	1.420	1.786	1.696	2.035	1.401	1.483	2.006	1.084	1.240	2.463	7.031	18.743	5.482	1.549	22,0
2010	955	1.141	2.059	2.133	2.251	2.494	2.373	2.881	2.787	3.376	3.444	6.365	8.539	32.259	6.026	2.513	29,4
2011	2.766	3.685	4.930	4.376	4.447	4.290	2.320	2.972	3.514	3.219	3.538	6.371	20.204	46.428	14.101	6.103	30,2
2012	1.674	2.503	4.073	3.065	3.957	3.714	2.818	2.700	3.568	2.739	3.335	5.713	15.272	39.859	11.162	4.110	26,9
2013	1.617	2.624	3.914	3.440	3.953	3.675	3.130	2.340	3.074	2.385	3.716	5.878	15.548	39.746	11.901	3.647	23,5
2014	1.555	2.287	3.383	3.461	3.788	3.789	2.299	2.640	3.649	2.686	3.316	6.952	14.474	39.805	10.725	3.749	25,9
2015	1.961	3.202	5.819	3.829	3.603	4.305	2.789	2.106	2.597	2.265	3.442	7.259	18.414	43.177	12.939	5.475	29,7
2016	1.027	1.398	2.266	2.154	2.672	2.663	972	1.713	1.475	2.251	2.530	3.016	9.517	24.137	5.858	3.659	38,4
2017	823	1.176	1.778	1.860	2.054	1.758	1.892	1.759	2.250	2.054	2.262	4.417	7.691	24.083	5.285	2.406	31,3
2018	1.031	1.382	2.570	2.265	2.007								9.255	9.255	5.308	3.947	42,6



	2008	2009	2010	2011	2012	2013	2014	2015	2016	2017	2018
İhracat/Export	467.678	222.121	335.860	349.171	334.473	356.715	374.097	399.385	460.064	603.764	583.236
Üretim/Production	608.510	310.506	457.018	531.111	491.255	483.647	476.226	563.100	619.319	748.575	734.610
İhracat/Exports (%)	76,9	71,5	73,5	65,7	68,1	73,8	78,6	70,9	74,3	80,7	79,4

Taşıt Araçları İhracatı (2016 - 2018)
Motor Vehicle Exports (2016 - 2018)

SEKTÖR / SECTOR	2016	2017	1/5-2017	1/5-2018	2018/2017 %
OTOMOBİL / Pass.Car	745.709	921.354	424.918	392.522	-7,6
OTOMOBİL TOPLAM	745.709	921.354	424.918	392.522	-7,6
KAMYON / Truck	5.521	7.800	2.925	4.716	61,2
KAMYONET / Pick Up	347.949	350.108	148.249	160.459	8,2
OTOBÜS / Bus	6.498	7.028	2.952	2.618	-11,3
MİNİBÜS / Minibus	34.790	45.794	19.062	17.246	-9,5
MİDİBÜS / Midibus	915	710	208	259	24,5
TİCARİ ARAÇLAR TOPLAM	395.673	411.440	173.396	185.298	6,9
TAŞIT ARAÇLARI TOPLAM	1.141.382	1.332.794	598.314	577.820	-3,4
TRAKTÖR / F.Tractor	13.651	13.123	5.450	5.416	-0,6
TRAKTÖR TOPLAM	13.651	13.123	5.450	5.416	-0,6
GENEL TOPLAM	1.155.033	1.345.917	603.764	583.236	-3,4

Üretici Bazında İhracat (adet)
Exports by Manufacturer (unit)

Üreticiler / Manufacturers	2016	2017	1-5 / 2017	1-5 / 2018
A.I.O.S.	673	700	195	264
FORD OTOSAN	256.706	296.840	126.712	135.327
HATTAT TRAKTÖR	1.026	1.100	498	179
HONDA TÜRKİYE	2.914	9.391	3.656	7.318
HYUNDAI ASSAN	207.234	204.382	89.751	81.856
KARSAN	3.629	2.969	803	1.372
M. BENZ TÜRK	8.307	9.865	4.220	5.716
MAN TÜRKİYE	1.717	2.007	924	749
OTOKAR	833	691	215	177
OYAK RENAULT	270.088	287.915	132.928	126.029
TEMSA	653	870	259	131
TOFAŞ	279.444	270.698	129.341	117.359
TOYOTA	109.184	246.466	109.310	101.522
TÜRK TRAKTÖR	12.625	12.023	4.952	5.237
GENEL TOPLAM / Grand Total	1.155.033	1.345.917	603.764	583.236

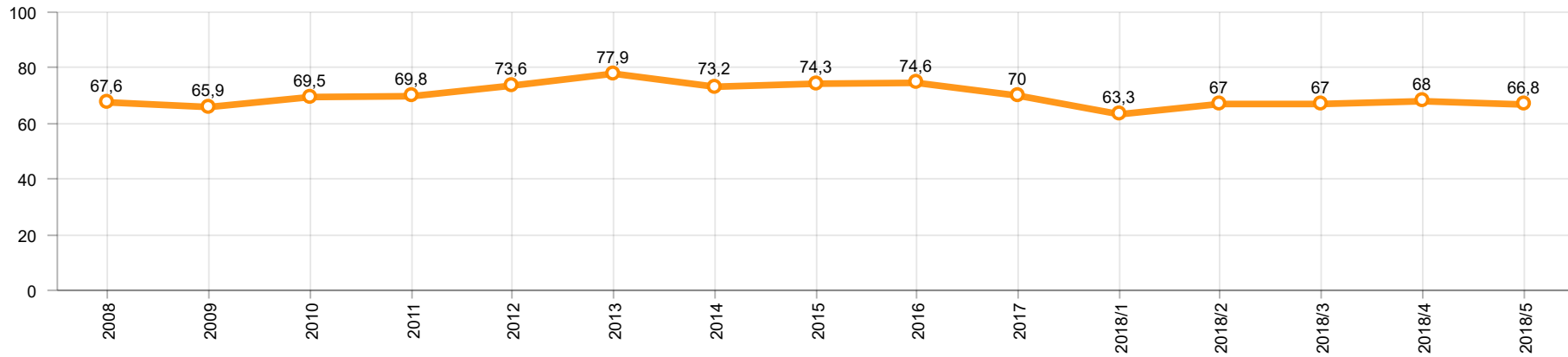
Otomotiv Ana ve Yan Sanayii İhracatı (ABD \$)
CBU and CKD Exports - \$

Sektör / Sector	2016	2017	OCAK - MAYIS / January - May 2017	OCAK - MAYIS / January - May 2018	2018 / 2017 %
Toplam Yan Sanayi / Total Component Industry	8.946.472.202	9.838.541.338	3.915.874.319	4.857.283.547	24,0
İç ve Dış Lastik / Tyres	978.124.241	1.131.881.119	446.570.710	585.047.126	31,0
Emniyet Camı / Safety Glasses	119.553.098	136.486.808	55.478.882	67.490.130	21,7
Motor / Engine	370.418.066	486.426.738	192.515.493	287.440.165	49,3
Akümülatör / Batteries	224.588.995	296.139.813	93.348.045	137.908.060	47,7
Diğer Aksam ve Parça / Spare Parts&Components	7.253.787.802	7.787.606.860	3.127.961.189	3.779.398.066	20,8
Toplam Ana Sanayi / Total Vehicle Industry	15.302.656.887	19.147.991.647	8.120.911.624	9.313.204.222	14,7
Otobüs / Bus	1.190.475.986	1.311.098.736	519.152.774	599.706.510	15,5
Midibüs-Minibüs / Midibus-Minibus	238.911.957	217.704.499	110.785.954	89.936.888	-18,8
Otomobil / P.Cars	8.336.928.418	11.790.776.093	5.068.726.037	5.588.080.894	10,2
Kamyon-Kamyonet / Truck-Pick Up&Van	4.617.147.751	4.849.465.868	1.996.777.384	2.368.580.492	18,6
Römork ve Yarı Römork / Trailer-Semi Trailer	265.338.366	230.168.223	126.205.240	203.902.709	61,6
Çekici / Tractor	316.355.575	427.967.083	173.871.372	325.413.147	87,2
Tarım Traktörü / Farm Tractor	337.498.834	320.811.145	125.392.863	137.583.582	9,7
Toplam / Total	24.249.129.089	28.986.532.985	12.036.785.943	14.170.487.769	17,7

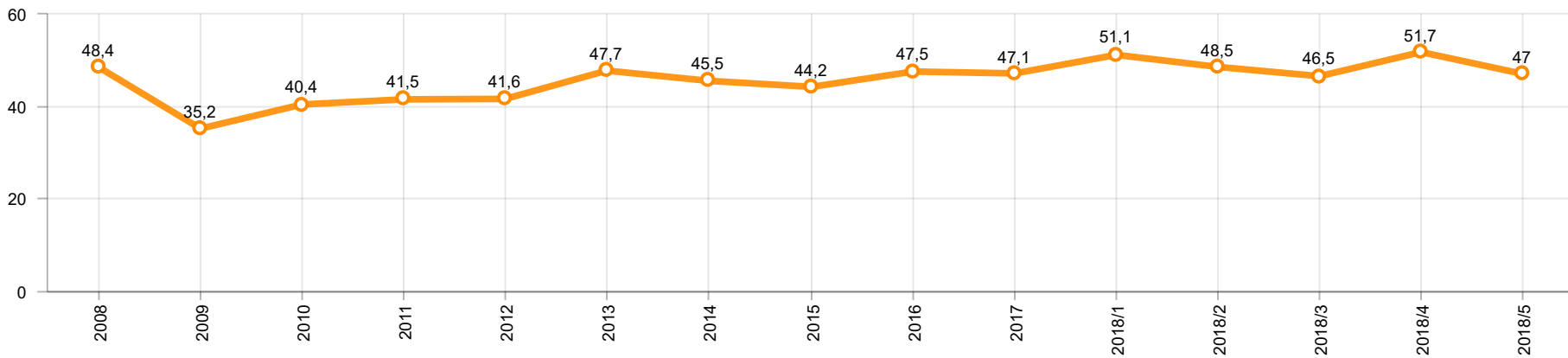
Kaynak: Uludağ İhracatçı Birlikleri . ÜİB tarafından OSD için özel olarak analiz edilen Otomotiv İhracatı kapsamında; ÜİB Türkiye Geneli Otomotiv Endüstrisi sınıflandırmasına kıyasla “Römork ve Yarı Römork” , “Tarım Traktörü” verileri dahil edilmekte; “Kullanılmış Araçlar” ,”İki Tekerlekli Taşıtlar” , “Demiryolu Taşıtları” hariç tutulmaktadır.

Source: Uludağ Exporters Association – Special Analyze for OSD.Compared to Turkish General Automotive Industry classification, this special analyze includes; farms tractors, trailers and semi-trailers, does not include; used vehicles, two-wheeled vehicles and railway vehicles

Otomobil Pazarında İthalatın Payı (%)
Import Share in P.Car Market (%)



Hafif Ticari Araçlar Pazarında İthalatın Payı (%)
Import Share in LCV Market (%)



Araç Tipleri / Vehicle Types	1	2	3	4	5	6	7	8	9	10	11	12	Toplam / Total
OTOMOBİL - Pass.Car	73.408	75.779	86.252	79.786	77.297								392.522
KAMYON - H. Truck	636	999	1.203	911	967								4.716
KAMYONET - Pick Up	18.119	39.567	36.823	31.215	34.735								160.459
OTOBÜS - Bus	508	511	733	366	500								2.618
MINİBÜS - Minibus	1.649	4.521	3.947	4.352	2.777								17.246
MİDİBÜS - Midibus	13	50	89	58	49								259
TİCARİ ARAÇLAR TOPLAMI - CV Total	20.925	45.648	42.795	36.902	39.028								185.298
TAŞIT ARAÇLARI TOPLAMI - MV Total	94.333	121.427	129.047	116.688	116.325								577.820
TRAKTÖR - F.Tractor	802	941	1.155	1.108	1.410								5.416
GENEL TOPLAM - Grand Total	95.135	122.368	130.202	117.796	117.735								583.236

Otomobil / P.Car

Firmalar / Firms	1	2	3	4	5	6	7	8	9	10	11	12	Toplam / Total
FORD OTOSAN	2.920	2.041	1.787	40	1.154	-	-	-	-	-	-	-	7.942
HONDA TÜRKİYE	1.251	2.300	814	1.430	1.523	-	-	-	-	-	-	-	7.318
HYUNDAI ASSAN	10.899	17.471	18.914	17.307	17.265	-	-	-	-	-	-	-	81.856
OYAK RENAULT	27.028	20.491	24.760	25.707	28.043	-	-	-	-	-	-	-	126.029
TOFAŞ	9.736	15.502	16.864	13.195	12.558	-	-	-	-	-	-	-	67.855
TOYOTA	21.574	17.974	23.113	22.107	16.754	-	-	-	-	-	-	-	101.522
TOPLAM - Total	73.408	75.779	86.252	79.786	77.297	-	-	-	-	-	-	-	392.522

Kamyonet / Pick-up

Firmalar / Firms	1	2	3	4	5	6	7	8	9	10	11	12	Toplam / Total
FORD OTOSAN	12.083	28.583	25.185	20.777	23.089	-	-	-	-	-	-	-	109.717
KARSAN	194	271	318	270	179	-	-	-	-	-	-	-	1.232
OTOKAR	-	6	-	-	-	-	-	-	-	-	-	-	6
TOFAŞ	5.842	10.707	11.320	10.168	11.467	-	-	-	-	-	-	-	49.504
TOPLAM - Total	18.119	39.567	36.823	31.215	34.735	-	-	-	-	-	-	-	160.459

Minibüs / Minibus

Firmalar / Firms	1	2	3	4	5	6	7	8	9	10	11	12	Toplam / Total
FORD OTOSAN	1.597	4.521	3.922	4.351	2.776	-	-	-	-	-	-	-	17.167
KARSAN	52	-	25	1	1	-	-	-	-	-	-	-	79
TOPLAM - Total	1.649	4.521	3.947	4.352	2.777	-	-	-	-	-	-	-	17.246

Kamyon / Truck

Firmalar / Firms	1	2	3	4	5	6	7	8	9	10	11	12	Toplam / Total
FORD OTOSAN	70	99	138	88	106	-	-	-	-	-	-	-	501
KARSAN	-	-	-	-	-	-	-	-	-	-	-	-	-
M. BENZ TÜRK	566	900	1.065	823	861	-	-	-	-	-	-	-	4.215
OTOKAR	-	-	-	-	-	-	-	-	-	-	-	-	-
TOPLAM - Total	636	999	1.203	911	967	-	-	-	-	-	-	-	4.716

Midibüs / Midibus

Firmalar / Firms	1	2	3	4	5	6	7	8	9	10	11	12	Toplam / Total
A.I.O.S.	6	32	54	37	20	-	-	-	-	-	-	-	149
KARSAN	1	3	1	1	-	-	-	-	-	-	-	-	6
OTOKAR	4	15	27	15	15	-	-	-	-	-	-	-	76
TEMSA	2	-	7	5	14	-	-	-	-	-	-	-	28
TOPLAM - Total	13	50	89	58	49	-	-	-	-	-	-	-	259

Otobüs / Bus

Firmalar / Firms	1	2	3	4	5	6	7	8	9	10	11	12	Toplam / Total
A.I.O.S.	3	2	39	24	47	-	-	-	-	-	-	-	115
KARSAN	1	-	23	-	31	-	-	-	-	-	-	-	55
M. BENZ TÜRK	220	238	373	311	359	-	-	-	-	-	-	-	1.501
MAN TÜRKİYE	261	237	251	-	-	-	-	-	-	-	-	-	749
OTOKAR	19	19	27	8	22	-	-	-	-	-	-	-	95
TEMSA	4	15	20	23	41	-	-	-	-	-	-	-	103
TOPLAM - Total	508	511	733	366	500	-	-	-	-	-	-	-	2.618

Traktör / F.Tractor

Firmalar / Firms	1	2	3	4	5	6	7	8	9	10	11	12	Toplam / Total
HATTAT TRAKTÖR	1	24	45	49	60	-	-	-	-	-	-	-	179
TÜRK TRAKTÖR	801	917	1.110	1.059	1.350	-	-	-	-	-	-	-	5.237
TOPLAM - Total	802	941	1.155	1.108	1.410	-	-	-	-	-	-	-	5.416

Firmalar / Firms	2017 Toplam / Total	1	2	3	4	5	6	7	8	9	10	11	12	Toplam / Total
Alfa Romeo	320	5	14	13	32	25	-	-	-	-	-	-	-	89
Aston Martin	25	1	1	1	1	1	-	-	-	-	-	-	-	5
Audi	21.585	1.013	1.033	1.552	1.625	1.630	-	-	-	-	-	-	-	6.853
Bentley	16	-	3	-	-	1	-	-	-	-	-	-	-	4
BMW	19.564	626	1.003	1.586	1.270	1.910	-	-	-	-	-	-	-	6.395
Citroen	14.709	407	1.128	1.086	615	980	-	-	-	-	-	-	-	4.216
Dacia	41.914	937	1.298	3.600	3.199	3.193	-	-	-	-	-	-	-	12.227
DS	119	-	-	81	20	9	-	-	-	-	-	-	-	110
Ferrari	16	1	1	2	3	1	-	-	-	-	-	-	-	8
Fiat	2.157	56	102	142	130	178	-	-	-	-	-	-	-	608
Ford	33.671	920	1.440	2.638	2.506	2.803	-	-	-	-	-	-	-	10.307
Honda	7.250	207	189	469	646	588	-	-	-	-	-	-	-	2.099
Hyundai	26.841	1.282	1.734	2.376	2.555	2.463	-	-	-	-	-	-	-	10.410
Infinity	122	3	5	2	2	2	-	-	-	-	-	-	-	14
Jaguar	339	12	20	24	18	12	-	-	-	-	-	-	-	86
Jeep	2.357	101	159	255	295	185	-	-	-	-	-	-	-	995
Kia	10.937	431	514	872	984	742	-	-	-	-	-	-	-	3.543
Lamborghini	7	-	-	-	1	1	-	-	-	-	-	-	-	2
Land Rover	1.879	84	145	162	129	112	-	-	-	-	-	-	-	632
Lexus	101	2	2	8	10	7	-	-	-	-	-	-	-	29
Maserati	76	4	2	6	6	4	-	-	-	-	-	-	-	22
Mazda	1.412	62	76	135	134	129	-	-	-	-	-	-	-	536
Mercedes-Benz	25.588	1.190	1.151	2.031	1.496	2.153	-	-	-	-	-	-	-	8.021
Mini	1.480	55	82	116	121	146	-	-	-	-	-	-	-	520
Mitsubishi	354	12	9	21	58	57	-	-	-	-	-	-	-	157
Nissan	32.043	767	1.470	2.908	2.021	2.508	-	-	-	-	-	-	-	9.674
Opel	44.707	1.327	1.568	2.989	3.476	1.416	-	-	-	-	-	-	-	10.776
Peugeot	29.981	809	1.625	3.038	2.875	3.819	-	-	-	-	-	-	-	12.166
Porsche	670	43	50	61	70	54	-	-	-	-	-	-	-	278
Renault	37.021	1.013	1.552	1.821	2.617	2.694	-	-	-	-	-	-	-	9.697
Seat	16.064	663	869	1.226	1.341	1.154	-	-	-	-	-	-	-	5.253
Skoda	24.679	1.564	2.161	2.911	2.018	1.820	-	-	-	-	-	-	-	10.474
Smart	105	-	-	4	4	3	-	-	-	-	-	-	-	11
Ssangyong	362	26	25	38	18	19	-	-	-	-	-	-	-	126
Subaru	1.726	86	55	224	165	144	-	-	-	-	-	-	-	674
Suzuki	4.316	67	122	323	253	383	-	-	-	-	-	-	-	1.148
Toyota	7.297	309	376	294	318	370	-	-	-	-	-	-	-	1.667
Volkswagen	89.688	2.497	3.763	6.561	5.801	5.913	-	-	-	-	-	-	-	24.535
Volvo	4.470	250	302	503	631	590	-	-	-	-	-	-	-	2.276
GENEL TOPLAM - Grand Total	505.968	16.832	24.049	40.079	37.464	38.219	-	-	-	-	-	-	-	156.643

Firmalar / Firms	2017 Toplam / Total	1	2	3	4	5	6	7	8	9	10	11	12	Toplam / Total
Citroen	8.023	94	291	706	406	634	-	-	-	-	-	-	-	2.131
Dacia	6.456	254	302	335	337	328	-	-	-	-	-	-	-	1.556
Fiat	6.582	163	252	401	249	362	-	-	-	-	-	-	-	1.427
Ford	4.188	174	142	251	247	216	-	-	-	-	-	-	-	1.030
Hyundai	2.984	119	85	28	215	199	-	-	-	-	-	-	-	646
Isuzu	302	24	18	19	19	33	-	-	-	-	-	-	-	113
Iveco	2.566	122	148	161	146	133	-	-	-	-	-	-	-	710
Kia	3.591	111	143	207	322	221	-	-	-	-	-	-	-	1.004
Mercedes-Benz	9.043	480	646	1.121	1.206	1.204	-	-	-	-	-	-	-	4.657
Mitsubishi	3.527	158	347	403	669	184	-	-	-	-	-	-	-	1.761
Nissan	2.779	95	154	197	165	116	-	-	-	-	-	-	-	727
Peugeot	10.458	178	277	485	517	404	-	-	-	-	-	-	-	1.861
Renault	16.822	512	793	1.087	1.127	969	-	-	-	-	-	-	-	4.488
Ssangyong	255	5	1	6	8	12	-	-	-	-	-	-	-	32
Toyota	4.551	210	267	310	652	352	-	-	-	-	-	-	-	1.791
Volkswagen	27.793	1.630	1.516	1.974	1.989	1.931	-	-	-	-	-	-	-	9.040
GENEL TOPLAM - Grand Total	109.920	4.329	5.382	7.691	8.274	7.298	-	-	-	-	-	-	-	32.974