



OTOMOTİV SANAYİİ DERNEĞİ
AUTOMOTIVE MANUFACTURERS ASSOCIATION

AYLIK RAPOR

Automotive Industry Monthly Report

Mayıs / May 2017

- **Üretim/Production**
- **Satış/Sales**
- **İthalat/Imports**
- **İhracat/Exports**

OSD "OICA" Üyesidir



OSD is a Member of "OICA"

2017 Mayıs Ayı Özeti / 2017 May Summary

KONULAR/MATTERS		MAYIS / MAY			5 AY/ 5 MONTHS			SON 12 AYLIK / YoY		
		2016	2017	2017/2016 (%)	2016	2017	2017/2016 (%)	2016	2017	2017/2016 (%)
Üretim/Production	Toplam/Total	125.342	154.758	23	594.673	727.997	22	1.410.328	1.619.251	15
	Otomobil/P.Cars	76.570	104.653	37	359.191	506.747	41	832.169	1.098.444	32
Pazar/Market	Toplam/Total	96.576	87.476	-9	356.794	325.193	-9	1.003.182	976.258	-3
	Otomobil/P.Cars	73.832	65.799	-11	267.371	239.760	-10	732.887	729.327	0
İthalat/Import	Toplam/Total	64.095	55.582	-13	237.293	206.903	-13	659.975	650.920	-1
	Otomobil/P.Cars	54.396	45.134	-17	196.111	165.889	-15	541.551	534.823	-1
İhracat/Export	Toplam/Total	94.278	125.688	33	453.720	598.318	32	1.052.399	1.285.971	22
	Otomobil/P.Cars	60.692	87.536	44	275.650	424.922	54	633.032	894.981	41
İhracat / Export (\$)	Toplam/Total **	2.046.944.861	2.597.354.839	27	9.739.892.793	12.003.895.228	23	22.671.352.111	26.528.238.250	17
	Otomobil/P.Cars	666.371.341	1.093.160.688	64	2.856.042.254	5.068.726.037	77	6.878.869.305	10.552.453.176	53

PARAMETRELER / PARAMETERS		MAYIS / MAY			5 AY/ 5 MONTHS			SON 12 AYLIK / YoY		
		2016	2017	2017/2016 (%)	2016	2017	2017/2016 (%)	2016	2017	2017/2016 (%)
ÜFE/PPI		1,48	0,52	**	2,77	7,74	**	5,19	9,02	**
TÜFE/CPI		0,58	0,45	**	3,15	6,18	**	7,71	9,09	**
Sanayi Endeksi/Industry Index		1,87	0,57	**	3,82	8,17	**	6,03	10,62	**
\$ (*)		2,8701	3,5316	23	2,8947	3,6202	25	2,8669	3,3076	15
EURO (*)		3,2441	3,9040	20	3,2181	3,8913	21	3,1724	3,5992	13
Japon Yeni (*)		2,6234	3,1492	20	2,5360	3,1930	26	2,4130	3,0179	25

(*) Ortalama Değerler / Average Values

(**) Toplam Sanayi / Total Industry Including Components

*Raporda yer alan üretim adetleri yalnızca OSD üyelerinin verilerini göstermektedir.
Production units in this report only show the data of OSD members.*

2016/2017 Yılları Üretim

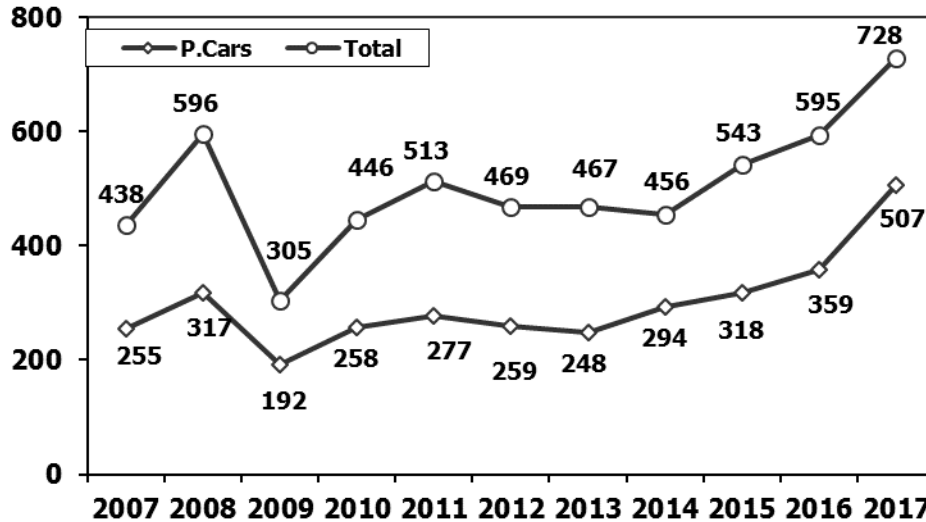
2016/2017 Production

K.KAMYON : AYA 3.5-12 Ton (L.Truck:GVW 3.5-12 Ton)

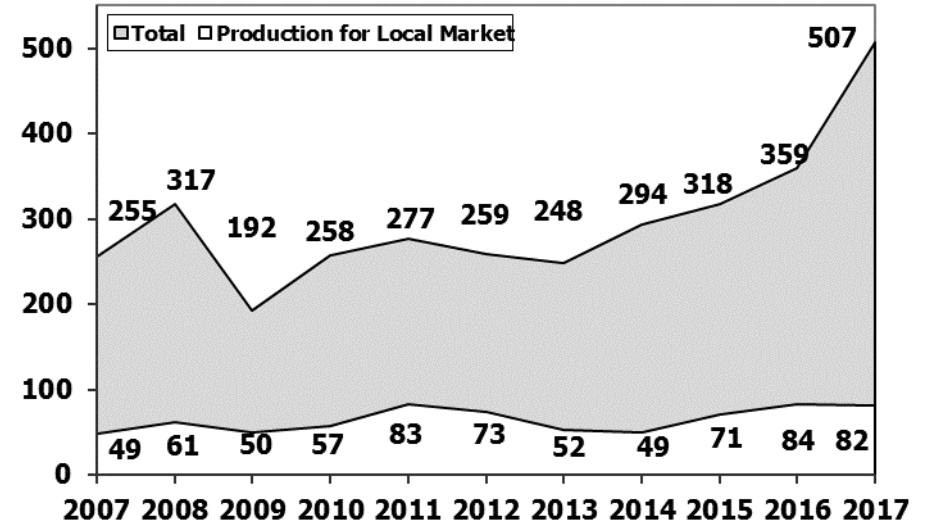
B.KAMYON : AYA 12 Ton'dan Büyük (M.Truck:GVW 12 Ton And Up)

TIPLER	MAYIS AYI ÜRETİMİ May Production		5 AYLIK ÜRETİM 5 Months Production		DEĞİŞİM % Percent Change %	
	2016	2017	2016	2017	MAYIS May	5 AY 5 Months
OTOMOBİL - Pass.Car	76.570	104.653	359.191	506.747	37	41
TİCARİ ARAÇLAR - Commercial Vehicles	48.772	50.105	235.482	221.250	3	-6
* B. KAMYON - M. Truck	1.640	1.598	6.128	6.801	-3	11
* K. KAMYON - L. Truck	341	224	778	1.359	-34	75
* KAMYONET - Pick Up	39.021	42.058	211.179	185.954	8	-12
* OTOBÜS - Bus	797	799	3.611	3.871	0	7
* MİNİBÜS - Minibus	6.610	5.207	12.479	21.995	-21	76
* MİDİBÜS - Midibus	363	219	1.307	1.270	-40	-3
TAŞIT ARAÇLARI TOPLAM - MV Total	125.342	154.758	594.673	727.997	23	22
TRAKTÖR - F.Tractor	5.402	4.216	24.646	20.572	-22	-17
GENEL TOPLAM - Grand Total	130.744	158.974	619.319	748.569	22	21

Toplam Üretim ve Otomobil Üretimi (x1000) (Ocak-Mayıs)
Total & P.Cars Production (x1000) (January-May)

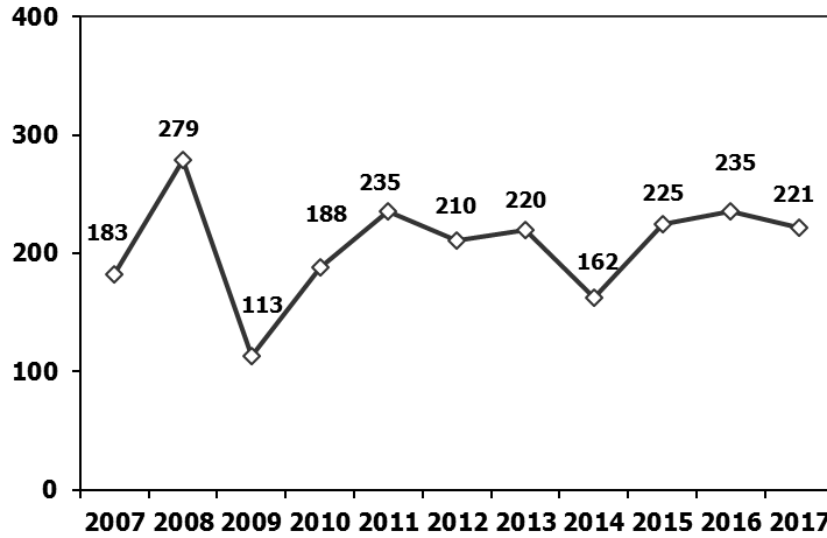


Otomobil Üretimi ve İhracat (x1000) (Ocak-Mayıs)
P.Cars Production & Exports (x1000) (January-May)



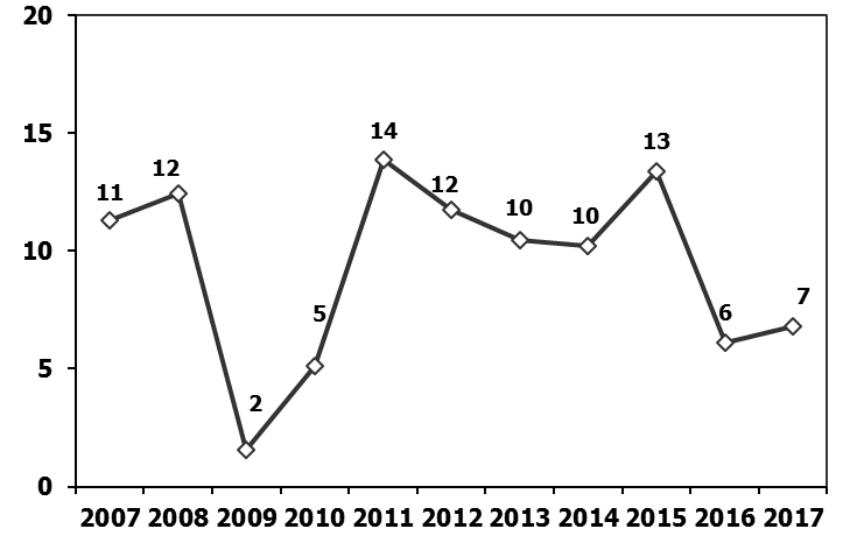
Ticari Araç Üretimi (x1000) (Ocak-Mayıs)

Commercial Vehicle Production (x1000) (January-May)



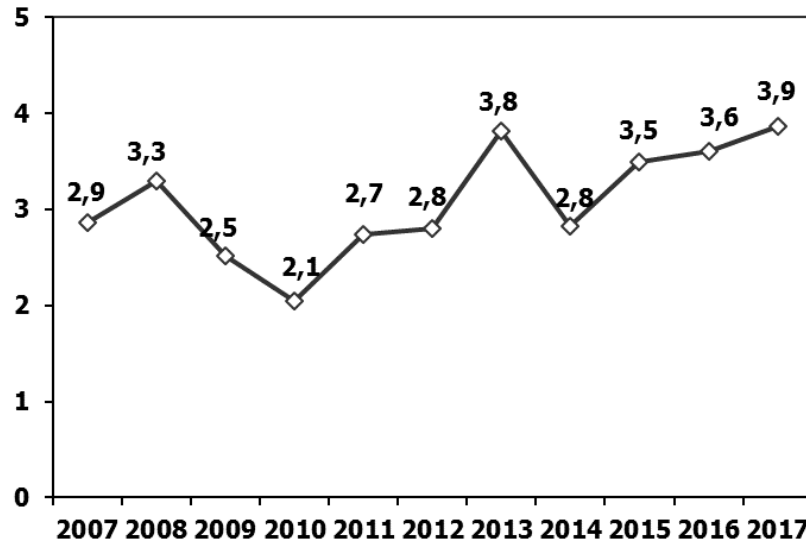
(AYA > 12 Ton) **Büyük Kamyon Üretimi** (x1000) (Ocak-Mayıs)

(GVW > 12 Ton) Heavy Truck Production (x1000) (January-May)



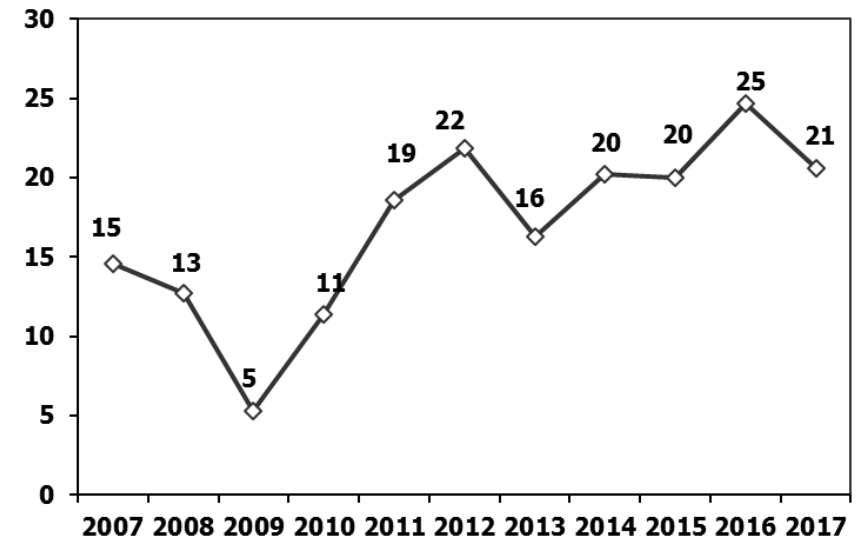
Otobüs Üretimi (x1000) (Ocak-Mayıs)

Bus Production (x1000) (January-May)



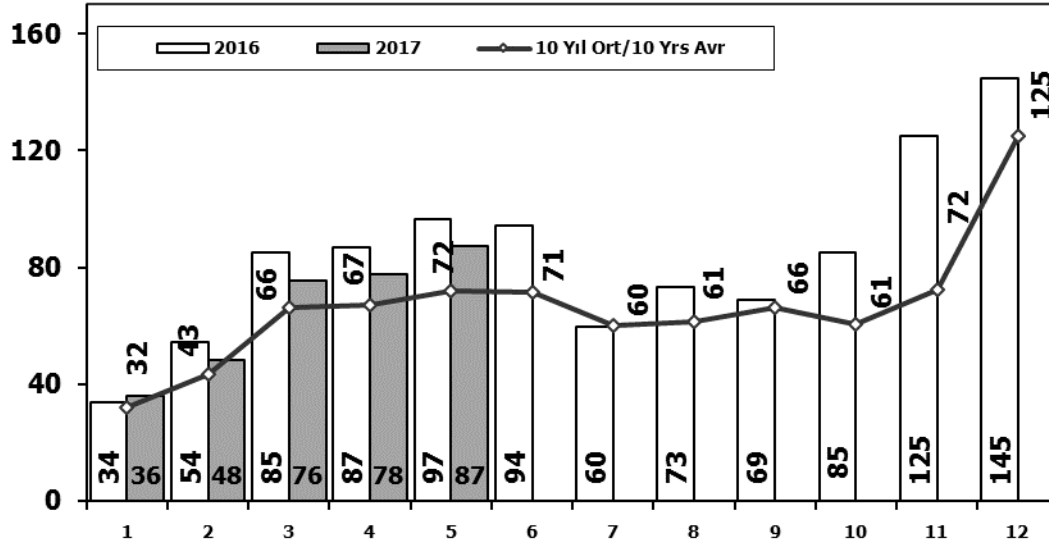
Traktör Üretimi (x1000) (Ocak-Mayıs)

F. Tractor Production (x1000) (January-May)



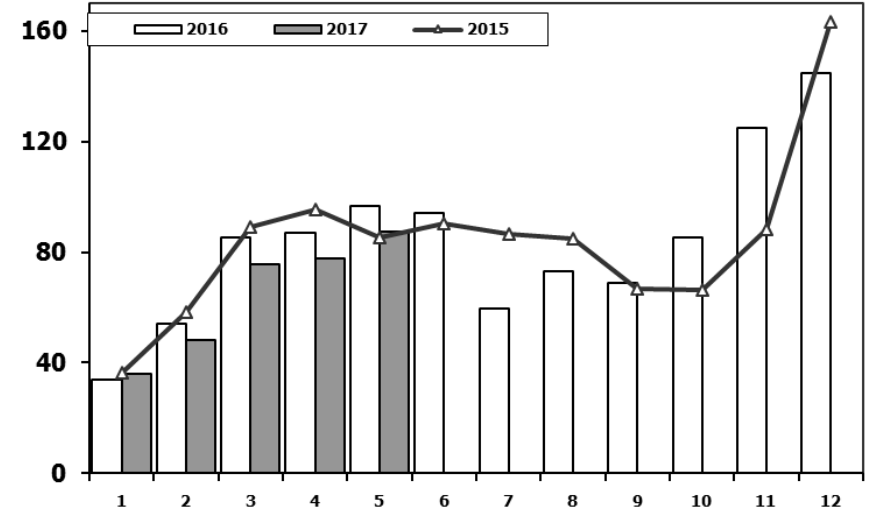
Toplam Pazarın Analizi (x1000)

Total Market Analysis (x1000)



Toplam Pazar (x1000)

Total Market (x1000)

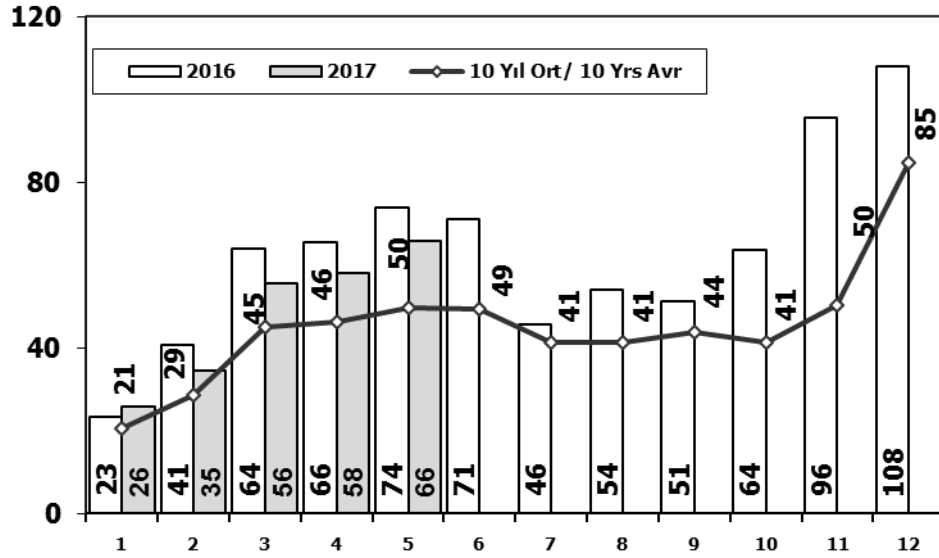


Aylar / Months	10 Yil Ort. 10 Yrs Avr. (x1000)	2017 (x1000)	%
1	32,1	36,1	12,6
2	43,2	48,1	11,4
3	66,3	75,6	14,0
4	67,2	77,8	15,8
5	71,8	87,5	21,8
Total	280,7	325,2	15,9

	1	2	3	4	5	6	7	8	9	10	11	12	5 Ay/Mo	Total
2007	24.950	31.702	45.488	45.633	51.255	51.661	50.117	54.171	50.078	56.058	67.017	106.076	199.028	634.206
2008	33.792	38.121	56.814	50.967	51.627	49.393	44.692	46.592	46.829	35.147	28.152	44.418	231.321	526.544
2009	20.631	22.846	56.531	54.426	64.887	63.102	30.246	37.092	83.403	22.117	29.202	91.386	219.321	575.869
2010	21.050	32.313	53.828	57.079	61.628	63.390	63.718	64.645	66.601	76.780	77.406	154.734	225.898	793.172
2011	47.658	62.348	83.333	82.071	85.093	85.863	65.364	61.378	63.643	72.640	67.195	134.281	360.503	910.867
2012	31.219	43.827	68.957	66.014	74.820	74.781	65.122	60.848	73.197	62.677	75.045	121.113	284.837	817.620
2013	37.140	50.931	72.688	77.015	85.421	77.771	74.726	67.383	71.037	60.399	83.017	135.596	323.195	893.124
2014	34.225	37.308	50.964	56.766	61.909	63.952	62.206	62.839	70.180	69.259	83.937	153.941	241.172	807.486
2015	36.576	58.533	89.121	95.431	85.145	90.463	86.625	84.683	66.622	66.520	88.043	163.432	364.806	1.011.194
2016	33.740	54.223	85.214	87.041	96.576	94.203	59.505	73.269	69.068	85.251	124.839	144.928	356.794	1.007.857
2017	36.146	48.141	75.581	77.849	87.476								325.193	325.193

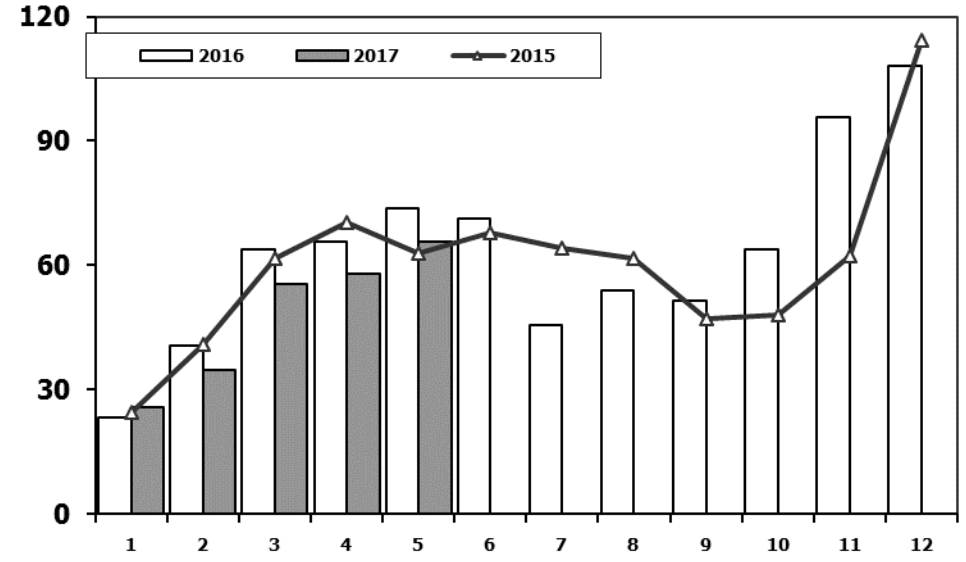
Otomobil Pazarının Analizi (x1000)

P.Cars Market Analysis (x1000)



Otomobil Pazarı (x1000)

P.Cars Market (x1000)

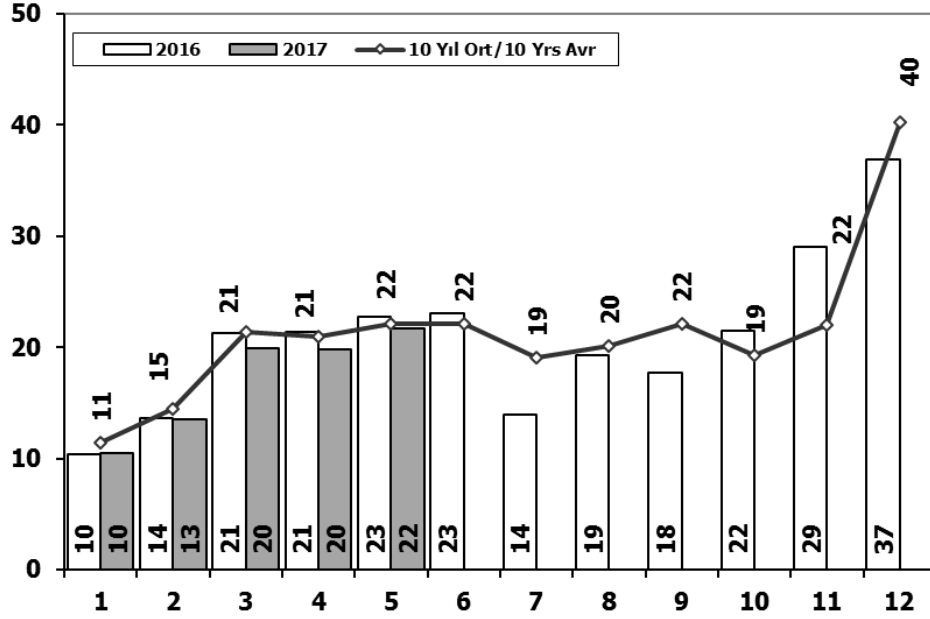


Aylar / Months	10 Yil Ort. 10 Yrs Avr. (x1000)	2017 (x1000)	%
1	20,7	25,7	24,4
2	28,7	34,7	20,7
3	45,0	55,6	23,7
4	46,3	58,0	25,2
5	49,7	65,8	32,3
Total	190,4	239,8	25,9

	1	2	3	4	5	6	7	8	9	10	11	12	5 Ay/Mo	Total
2007	13.186	17.212	24.336	25.204	29.067	30.126	28.246	28.469	27.662	32.569	39.643	61.745	109.005	357.465
2008	18.588	21.196	34.147	30.313	31.477	28.724	25.530	26.102	27.053	19.788	17.201	25.879	135.721	305.998
2009	13.173	14.492	40.622	36.202	44.188	41.019	16.637	22.537	52.162	13.828	17.781	57.178	148.677	369.819
2010	12.594	20.651	33.958	36.549	40.467	42.086	41.399	42.222	42.477	47.859	50.061	99.461	144.219	509.784
2011	29.868	39.004	54.023	53.835	56.302	56.714	43.518	38.875	39.964	47.508	44.951	88.957	233.032	593.519
2012	21.077	29.189	47.270	45.645	50.460	50.849	44.531	41.236	49.360	43.440	52.297	80.926	193.641	556.280
2013	25.835	36.814	51.785	56.999	62.383	58.290	55.712	51.611	52.925	46.985	64.117	101.199	233.816	664.655
2014	24.368	27.167	37.812	42.769	46.379	47.278	46.602	45.131	49.262	50.814	59.695	110.054	178.495	587.331
2015	24.498	40.817	61.676	70.211	62.878	67.766	64.218	61.753	47.088	47.954	62.397	114.340	260.080	725.596
2016	23.358	40.588	63.975	65.618	73.832	71.111	45.566	53.977	51.340	63.746	95.783	108.044	267.371	756.938
2017	25.689	34.658	55.616	57.998	65.799								239.760	239.760

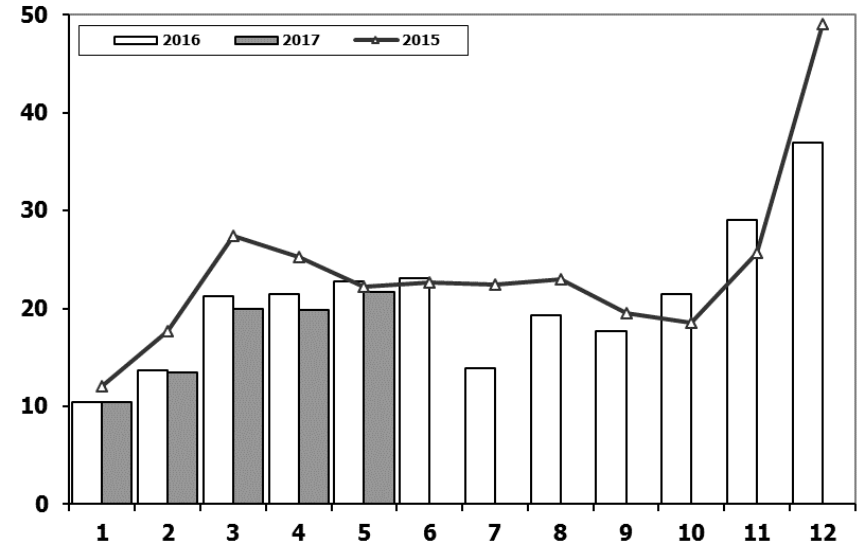
Ticari Araç Pazarının Analizi (x1000)

CV Market Analysis (x1000)



Ticari Araç Pazarı (x1000)

CV Total Market (x1000)

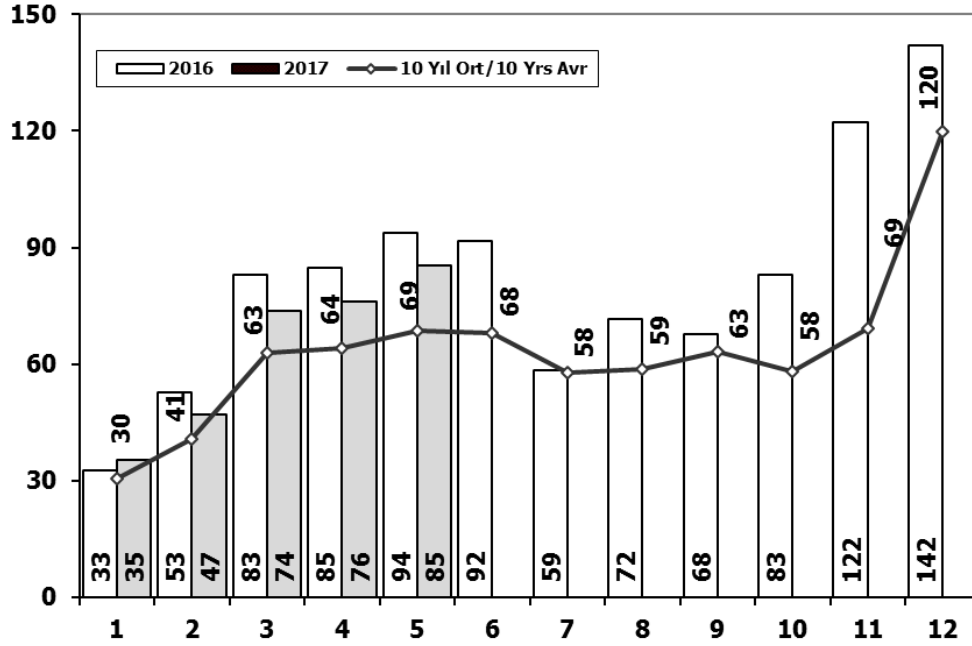


Aylar / Months	10 Yil Ort. 10 Yrs Avr. (x1000)	2017 (x1000)	%
1	11,4	10,5	-8,6
2	14,5	13,5	-7,0
3	21,3	20,0	-6,4
4	20,9	19,9	-5,1
5	22,1	21,7	-1,9
Total	90,3	85,4	-5,4

	1	2	3	4	5	6	7	8	9	10	11	12	5 Ay/Mo	Total
2007	11.764	14.490	21.152	20.429	22.188	21.535	21.871	25.702	22.416	23.489	27.374	44.331	90.023	276.741
2008	15.204	16.925	22.667	20.654	20.150	20.669	19.162	20.490	19.776	15.359	10.951	18.539	95.600	220.546
2009	7.458	8.354	15.909	18.224	20.699	22.083	13.609	14.555	31.241	8.289	11.421	34.208	70.644	206.050
2010	8.456	11.662	19.870	20.530	21.161	21.304	22.319	22.423	24.124	28.921	27.345	55.273	81.679	283.388
2011	17.790	23.344	29.310	28.236	28.791	29.149	21.846	22.503	23.679	25.132	22.244	45.324	127.471	317.348
2012	10.142	14.638	21.687	20.369	24.360	23.932	20.591	19.612	23.837	19.237	22.748	40.187	91.196	261.340
2013	11.305	14.117	20.903	20.016	23.038	19.481	19.014	15.772	18.112	13.414	18.900	34.397	89.379	228.469
2014	9.857	10.141	13.152	13.997	15.530	16.674	15.604	17.708	20.918	18.445	24.242	43.887	62.677	220.155
2015	12.078	17.716	27.445	25.220	22.267	22.697	22.407	22.930	19.534	18.566	25.646	49.092	104.726	285.598
2016	10.382	13.635	21.239	21.423	22.744	23.092	13.939	19.292	17.728	21.505	29.056	36.884	89.423	250.919
2017	10.457	13.483	19.965	19.851	21.677								85.433	85.433

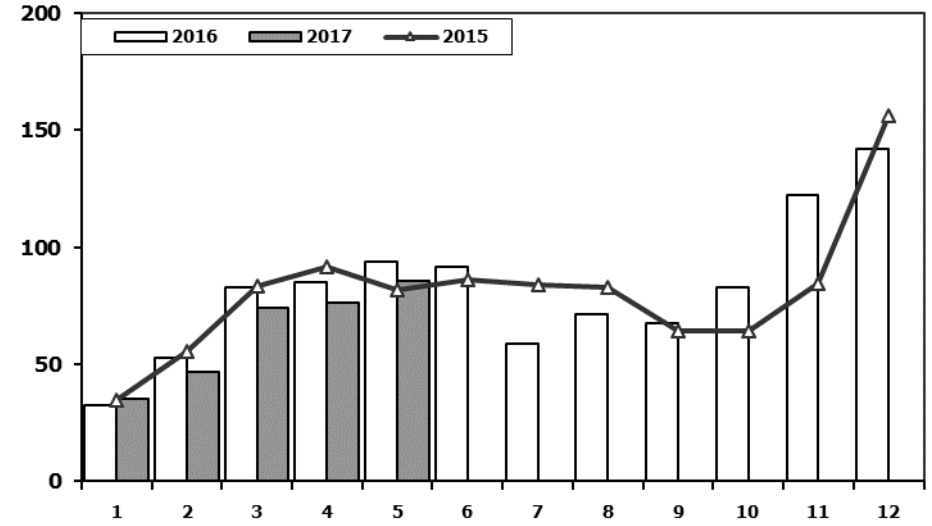
Hafif Araç Pazarının Analizi (x1000)

LV Market Analysis (x1000)



Hafif Araç Pazarı (x1000)

LV Total Market (x1000)

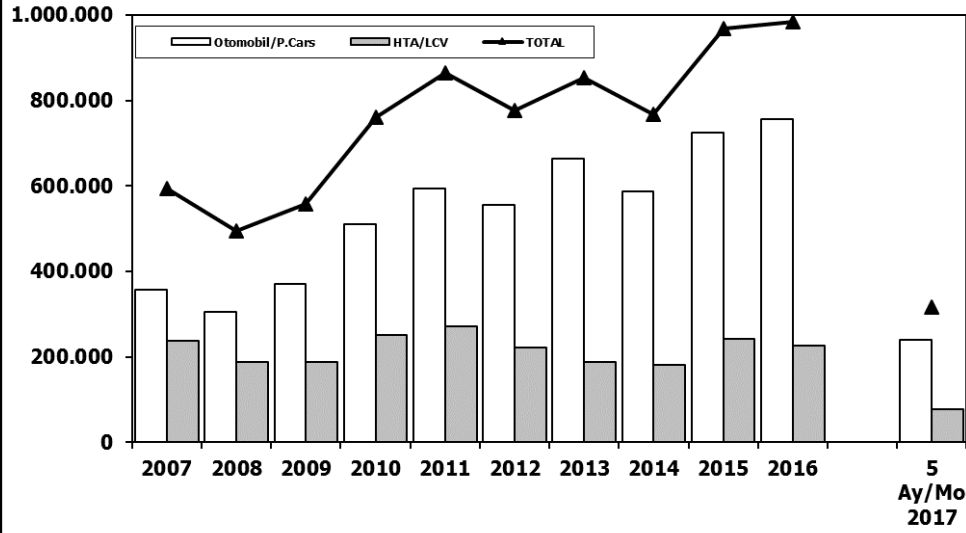


Aylar / Months	10 Yil Ort. 10 Yrs Avr. (x1000)	2017 (x1000)	%
1	30,4	35,3	16,1
2	40,9	47,0	14,9
3	62,8	73,8	17,5
4	64,2	76,0	18,4
5	68,6	85,4	24,6
Total	266,9	317,5	19,0

	1	2	3	4	5	6	7	8	9	10	11	12	5 Ay/Mo	Total
2007	23.117	29.184	41.890	42.366	47.938	48.674	47.490	50.558	46.581	52.725	63.313	100.926	184.495	594.762
2008	31.527	35.251	53.649	47.701	48.598	46.324	42.156	43.670	43.932	32.884	26.253	42.078	216.726	494.023
2009	19.606	21.742	55.111	52.640	63.191	61.067	28.845	35.609	81.397	21.033	27.962	88.923	212.290	557.126
2010	20.095	31.172	51.769	54.946	59.377	60.896	61.345	61.764	63.814	73.404	73.962	148.369	217.359	760.913
2011	44.892	58.663	78.403	77.695	80.646	81.573	63.044	58.406	60.129	69.421	63.657	127.910	340.299	864.439
2012	29.545	41.324	64.884	62.949	70.863	71.067	62.304	58.148	69.629	59.938	71.710	115.400	269.565	777.761
2013	35.523	48.307	68.774	73.575	81.468	74.096	71.596	65.043	67.963	58.014	79.301	129.718	307.647	853.378
2014	32.670	35.021	47.581	53.305	58.121	60.163	59.907	60.199	66.531	66.573	80.621	146.989	226.698	767.681
2015	34.615	55.331	83.302	91.602	81.542	86.158	83.836	82.577	64.025	64.255	84.601	156.173	346.392	968.017
2016	32.713	52.825	82.948	84.887	93.904	91.540	58.533	71.556	67.593	83.000	122.309	141.912	347.277	983.720
2017	35.323	46.965	73.802	75.988	85.422								317.500	317.500

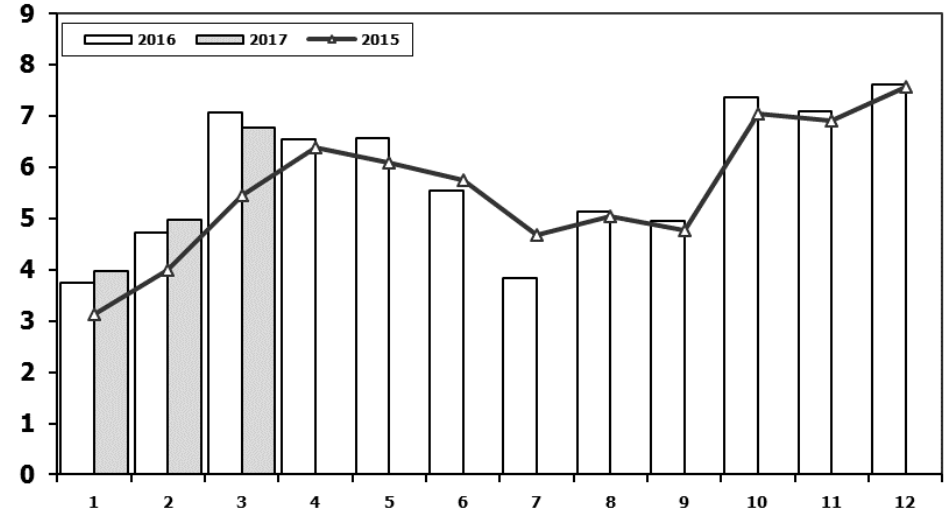
Hafif Araç Pazarı (AYA < 3.5 Ton)

Light Vehicle Market (GVW < 3.5 Ton)



Traktör Pazarı (x1000)

F.Tractor Market (x1000)



	2007	2008	2009	2010	2011	2012	2013	2014	2015	2016	5 Ay/Mo 2017
Otomobil/P.Cars	357.465	305.998	369.819	509.784	593.519	556.280	664.655	587.331	725.596	756.938	239.760
HTA/LCV	237.297	188.025	187.307	251.129	270.920	221.481	188.723	180.350	242.421	226.782	77.740
TOTAL	594.762	494.023	557.126	760.913	864.439	777.761	853.378	767.681	968.017	983.720	317.500
HTA/LCV (%)	40	38	34	33	31	28	22	23	25	23	24

	1	2	3	4	5	6	7	8	9	10	11	12	3 Ay/Mo	Total
2007	2.816	2.244	3.053	2.657	3.188	3.141	2.497	2.381	3.025	2.755	3.549	3.097	8.113	34.403
2008	2.770	1.855	3.395	3.081	2.769	2.400	2.232	2.485	1.856	1.773	1.305	1.101	8.020	27.022
2009	717	572	688	1.070	1.297	1.256	1.054	1.183	1.117	1.356	1.304	2.144	1.977	13.758
2010	1.111	1.991	2.330	3.039	2.567	2.638	1.965	3.019	2.806	4.424	3.978	6.168	5.432	36.036
2011	2.975	5.242	5.927	5.358	6.016	6.335	4.534	4.051	4.140	5.828	4.943	4.992	14.144	60.341
2012	2.362	1.983	4.348	6.579	6.273	4.569	3.837	3.158	3.618	4.027	4.807	4.757	8.693	50.318
2013	2.161	2.432	4.005	4.585	5.616	3.136	4.574	3.408	4.935	4.762	5.781	6.891	8.598	52.286
2014	2.169	3.512	4.476	4.905	5.094	5.028	4.233	4.920	5.619	5.743	6.250	7.409	10.157	59.358
2015	3.124	3.984	5.460	6.383	6.078	5.748	4.677	5.044	4.765	7.049	6.898	7.564	12.568	66.774
2016	3.739	4.731	7.067	6.546	6.575	5.543	3.833	5.134	4.945	7.372	7.090	7.603	15.537	70.178
2017	3.974	4.964	6.773										15.711	15.711

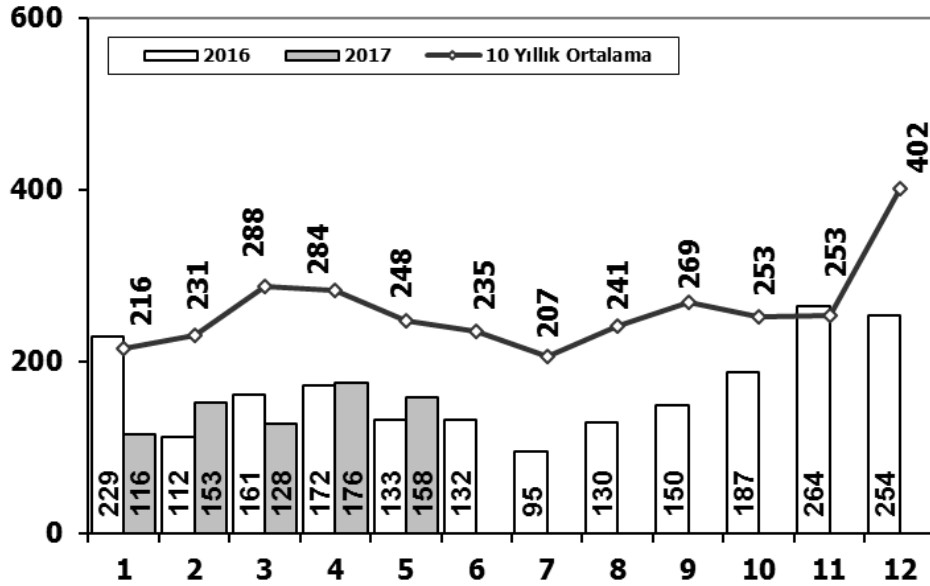
Kaynak: TÜİK trafik kayıtları.

Rakamlar, son iki model yılına ait traktör tescillerinden oluşmaktadır.

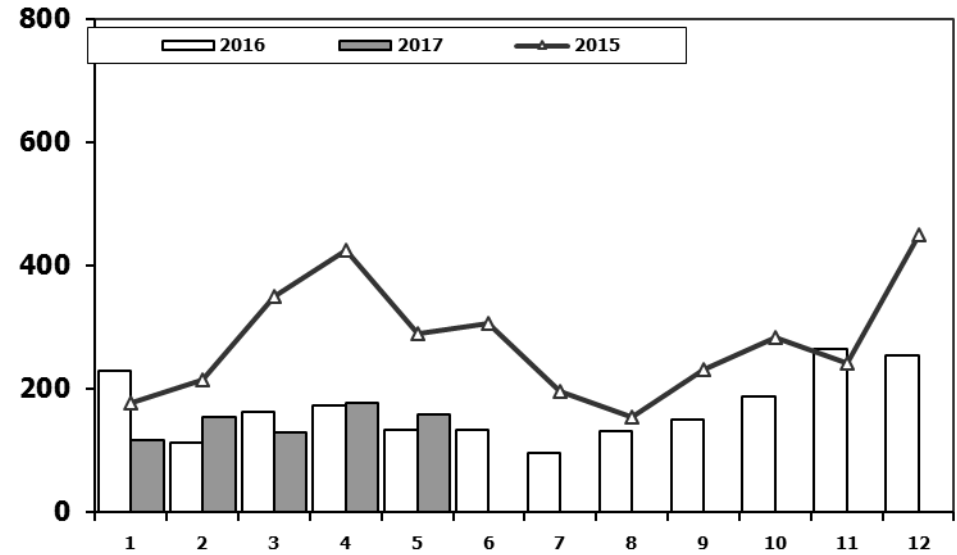
Source: Turkish Statistical Institute – Traffic registrations

Data represents the last two model year's farm tractors registration figures

Midibüs Pazarının Analizi (7-9 mt / 25-35 Kişilik) Midibus Market Analysis (7-9 mt / 25-35 Passengers)



Midibüs Pazarı (7-9 mt / 25-35 Kişilik Midibüs) Midibus Market (7-9 mt / 25-35 Passengers)

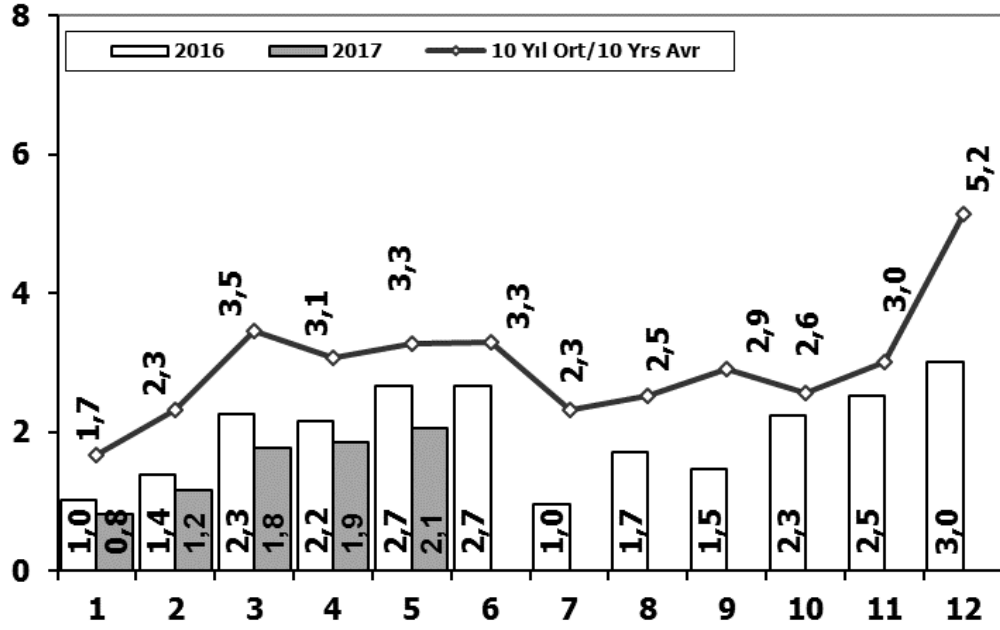


	1	2	3	4	5	6	7	8	9	10	11	12	5 Ay/Mo	Total
2007	207	272	404	238	302	283	164	365	399	279	283	465	1.423	3.661
2008	391	476	436	512	419	331	368	380	341	352	246	270	2.234	4.522
2009	154	124	160	220	174	198	160	175	168	143	206	323	832	2.205
2010	155	131	185	167	140	138	129	246	236	206	202	437	778	2.372
2011	138	195	294	316	280	258	211	305	301	276	260	270	1.223	3.104
2012	179	257	277	229	257	239	216	249	325	269	189	398	1.199	3.084
2013	191	268	289	276	283	241	367	235	305	392	415	697	1.307	3.959
2014	335	265	326	280	206	223	161	174	229	140	226	454	1.412	3.019
2015	177	213	350	425	288	306	195	154	231	283	240	450	1.453	3.312
2016	229	112	161	172	133	132	95	130	150	187	264	254	807	2.019
2017	116	153	128	176	158								731	731

Aylar / Months	10 Yıl Ort. / 10 Yrs Avr.	2017	%
1	216	116	-46
2	231	153	-34
3	288	128	-56
4	284	176	-38
5	248	158	-36
Total	1.267	731	-42

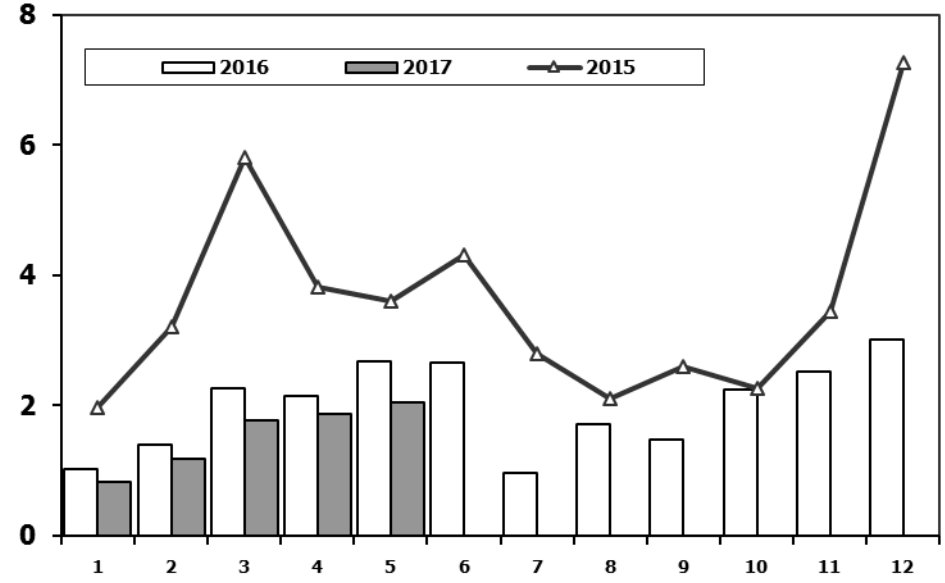
Ağır Ticari Araç Pazarının Analizi (x1000)

HCV Market Analysis (x1000)



Ağır Ticari Araç Pazarı (x1000)

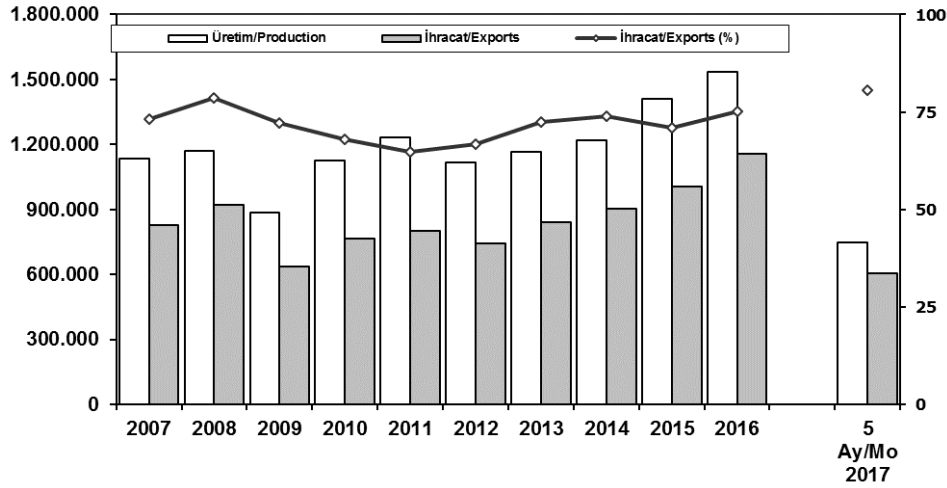
HCV Market (x1000)



	1	2	3	4	5	6	7	8	9	10	11	12	5 Ay/Mo	Total
2007	1.833	2.518	3.598	3.267	3.317	2.987	2.627	3.613	3.497	3.333	3.704	5.150	14.533	39.444
2008	2.265	2.870	3.165	3.266	3.029	3.069	2.536	2.922	2.897	2.263	1.899	2.340	14.595	32.521
2009	1.025	1.104	1.420	1.786	1.696	2.035	1.401	1.483	2.006	1.084	1.240	2.463	7.031	18.743
2010	955	1.141	2.059	2.133	2.251	2.494	2.373	2.881	2.787	3.376	3.444	6.365	8.539	32.259
2011	2.766	3.685	4.930	4.376	4.447	4.290	2.320	2.972	3.514	3.219	3.538	6.371	20.204	46.428
2012	1.674	2.503	4.073	3.065	3.957	3.714	2.818	2.700	3.568	2.739	3.335	5.713	15.272	39.859
2013	1.617	2.624	3.914	3.440	3.953	3.675	3.130	2.340	3.074	2.385	3.716	5.878	15.548	39.746
2014	1.555	2.287	3.383	3.461	3.788	3.789	2.299	2.640	3.649	2.686	3.316	6.952	14.474	39.805
2015	1.961	3.202	5.819	3.829	3.603	4.305	2.789	2.106	2.597	2.265	3.442	7.259	18.414	43.177
2016	1.027	1.398	2.266	2.154	2.672	2.663	972	1.713	1.475	2.251	2.530	3.016	9.517	24.137
2017	823	1.176	1.779	1.861	2.054								7.693	7.693

Aylar / Months	10 Yıl Ort. 10 Yrs Avr. (x1000)	2017 (x1000)	%
1	1,7	0,8	-50,7
2	2,3	1,2	-49,6
3	3,5	1,8	-48,6
4	3,1	1,9	-39,5
5	3,3	2,1	-37,2
Total	13,8	7,7	-44,3

İhracat/Üretim (2007-2017) (Traktör dahil) Exports/Production (2007-2017) (Including F.Tractor)



	2007	2008	2009	2010	2011	2012	2013	2014	2015	2016	5 Ay/Mo 2017
Üretim/Production	1.132.951	1.171.917	884.466	1.124.982	1.234.637	1.115.233	1.166.043	1.218.848	1.410.034	1.536.673	748.569
İhracat/Exports	829.879	920.763	637.855	763.670	801.112	745.354	843.467	902.194	1.007.267	1.155.033	603.768
İhracat/Exports (%)	73	79	72	68	65	67	72	74	71	75	81

Taşıt Araçları İhracatı (2015-2017) Motor Vehicle Exports (2015-2017)

SEKTÖR/SECTOR	2015	2016	2016	2017	2017/2016 (%)
			5 Ay-5 Mo		
OTOMOBİL / P.Cars	604.683	745.709	275.650	424.922	54
TİCARİ ARAÇLAR / CV	387.652	395.673	178.070	173.396	-3
* Kamyonet/Pick-Up	341.834	347.949	166.350	148.249	-11
* Minibüs/Minibus	38.255	34.790	6.859	19.062	178
* Kamyon/Truck	1.408	5.521	1.739	2.925	68
* Midibüs/Midibus	447	915	298	208	-30
* Otobüs/Bus	5.708	6.498	2.824	2.952	5
TAŞIT ARAÇLARI /MV TOTAL	992.335	1.141.382	453.720	598.318	32
TRAKTÖR/F.TRACTOR	14.932	13.651	6.344	5.450	-14
TOTAL	1.007.267	1.155.033	460.064	603.768	31

Otomotiv Ana ve Yan Sanayii İhracatı (ABD \$) CBU and CKD Exports - \$

Sektör / Sector	2013	2014	2015	2016	2016	2017	2017/2016 (%)
					Ocak-Mayıs / January-May		
Yan Sanayi İhracatı/Total Component Exports	9.065.017.539	9.504.013.791	8.641.977.425	8.947.915.672	3.799.027.154	3.918.683.059	3%
İç ve Dış Lastik / Tyres	1.130.005.891,78	1.126.709.610,14	960.550.807	978.284.060	399.395.977	446.714.305	12%
Emniyet Camı / Safety Glasses	135.230.309,67	143.208.298,99	124.564.841	119.569.736	53.589.096	55.547.849	4%
Motor (Engine)	319.294.885,46	171.893.752,32	221.897.271	370.561.589	138.659.868	192.515.493	39%
Akümülatör / Batteries	306.451.449,47	289.101.198,21	220.462.827	224.590.660	77.493.990	93.447.576	21%
Diğer Aksam ve Parça / Spare Parts&Components	7.174.035.002,35	7.773.100.931,83	7.114.501.679	7.254.909.627	3.129.888.224	3.130.457.836	0%
Ana Sanayi İhracatı/Total Vehicle Exports	12.491.591.365	13.259.499.977	12.977.346.859	15.302.074.705	5.940.865.639	8.085.212.169	36%
Otobüs / Bus	937.790.962,87	985.983.007,01	1.023.556.746	1.190.475.986	522.972.675	519.152.774	-1%
Midibüs-Minibüs / Minibus- Minibus	147.769.644,17	97.685.509,12	130.195.838	238.911.957	74.102.100	110.861.955	50%
Otomobil (P. Cars)	6.855.475.589,83	7.258.361.005,24	6.881.867.274	8.336.946.503	2.856.042.254	5.068.726.037	77%
Kamyon-Kamyonet/HCV-LCV	3.918.798.755,31	4.201.760.813,55	4.264.018.829	4.616.562.139	2.090.105.821	1.997.243.490	-4%
Römork ve Yarı Römork/Trailer-Semi Trailer	218.385.731,69	252.354.014,20	252.397.167	265.323.711	139.668.322	89.845.588	-36%
Çekici/Truck-Tractor	77.907.406,95	38.396.524,81	48.108.959	316.355.575	99.230.487	173.871.372	75%
Tarım Traktörü/Farm Tractor	335.463.274,61	424.959.103,39	377.202.046	337.498.834	158.743.980	125.510.954	-21%
Toplam/Total	21.556.608.904	22.763.513.769	21.619.324.284	24.249.990.377	9.739.892.793	12.003.895.228	23%

Kaynak: Uludağ İhracatçı Birlikleri . ÜİB tarafından OSD için özel olarak analiz edilen Otomotiv İhracatı kapsamında; ÜİB Türkiye Genel Otomotiv Endüstrisi sınıflandırmasına kıyasla "Römork ve Yarı Römork", "Tarım Traktörü" verileri dahil edilmekte; "Kullanılmış Araçlar", "İki Tekerlekli Taşıtlar", "Demiryolu Taşıtları" hariç tutulmaktadır.

Source: Uludağ Exporters Association - Special Analyze for OSD

Compared to Turkish General Automotive Industry classification, this special analyze includes; farms tractors, trailers and semi-trailers, does not include; used vehicles, two-wheeled vehicles and railway vehicles.

Firma Bazında İhracat (Adet)
Export Of Member Companies (Unit)

FİRMALAR Companies	2015	2016	Ocak-Mayıs 5 Months	
			2016	2017
			2016	2017
OYAK RENAULT	270.299	270.088	111.535	132.928
TOFAŞ	173.743	279.444	107.127	129.345
FORD OTOSAN	252.571	256.706	112.262	126.712
TOYOTA	81.962	109.184	26.335	109.310
HYUNDAI ASSAN	201.276	207.234	89.930	89.751
TÜRK TRAKTÖR	14.122	12.625	5.826	4.952
M. BENZ TÜRK	4.252	8.307	3.181	4.220
HONDA TÜRKİYE	2.220	2.914	965	3.656
MAN TÜRKİYE	1.493	1.717	785	924
KARSAN	3.067	3.629	877	803
HATTAT TARIM	810	1.026	518	498
TEMSA GLOBAL	441	653	281	259
OTOKAR	720	833	279	215
A.I.O.S.	291	673	163	195
GENEL TOPLAM	1.007.267	1.155.033	460.064	603.768

Kaynak: OSD

Sektör Bazında İhracat (1000 \$)
Exports on Sectorial Basis

SEKTÖRLER (1.000 \$)	MAYIS				OCAK - MAYIS				SON 12 AYLIK			
	2016	2017	Değişim ('17/'16)	Pay(17)	2016	2017	Değişim ('17/'16)	Pay(17)	2016	2017	Değişim ('17/'16)	Pay(17)
	Otomotiv Endüstrisi	1.998.422	2.565.729	28,4	20,6	9.586.309	11.860.551	23,7	18,8	22.217.990	26.161.609	17,7
Hazırgiyim ve Konfeksiyon	1.417.800	1.405.044	-0,9	11,3	7.185.114	6.814.802	-5,2	10,8	17.440.775	16.586.497	-4,9	11,3
Kimyevi Maddeler ve Mamulleri	1.126.967	1.322.924	17,4	10,6	5.682.759	6.655.115	17,1	10,5	14.546.696	14.910.173	2,5	10,1
Çelik	748.298	966.412	29,1	7,7	3.547.672	4.922.464	38,8	7,8	8.919.387	10.449.062	17,2	7,1
Elektrik Elektronik ve Hizmet	806.575	885.908	9,8	7,1	4.019.701	3.882.287	-3,4	6,1	10.375.553	9.834.079	-5,2	6,7
Tekstil ve Hammaddeleri	667.584	672.876	0,8	5,4	3.289.789	3.337.364	1,4	5,3	7.926.514	7.914.920	-0,1	5,4
Hububat, Bakliyat, Yağlı Tohumlar ve Mamulleri	511.400	529.110	3,5	4,2	2.636.708	2.755.487	4,5	4,4	6.183.124	6.477.770	4,8	4,4
Demir ve Demir Dışı Metaller	503.328	571.709	13,6	4,6	2.481.395	2.697.040	8,7	4,3	6.128.061	6.161.644	0,5	4,2
Makine ve Aksamları	455.988	511.515	12,2	4,1	2.233.911	2.335.801	4,6	3,7	5.505.662	5.405.296	-1,8	3,7
Madencilik Ürünleri	315.281	446.058	41,5	3,6	1.398.267	1.913.285	36,8	3,0	3.708.742	4.302.263	16,0	2,9
TOPLAM	10.768.279	12.472.179	15,8	100,0	57.390.172	63.145.823	10,0	100,0	139.745.774	146.958.331	5,2	100,0

Kaynak: TİM

Mayıs ayı ihracat verilerine, "İhracatçı Birlikleri Kaydından Muaf İhracat" verisi dahil değildir.

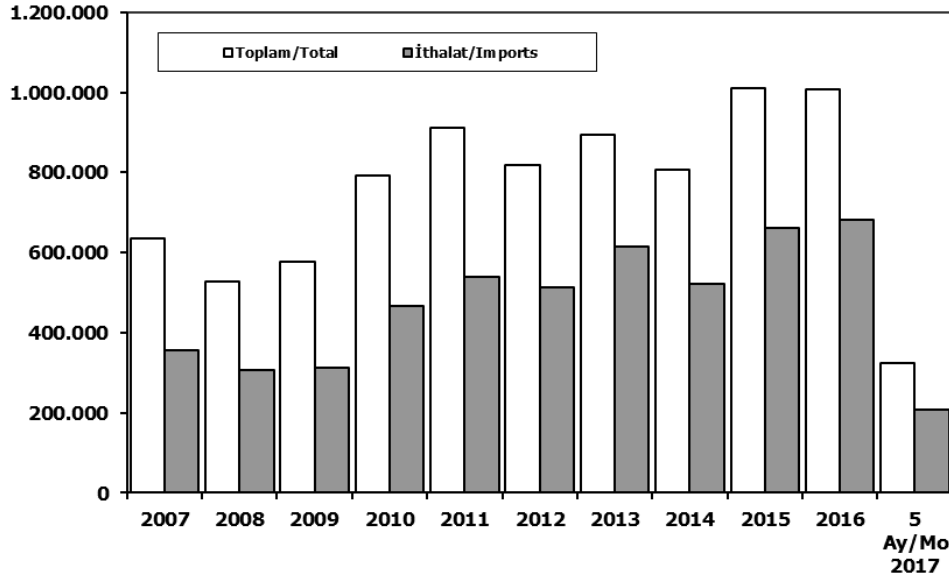
Source: TİM

Exportation data for May does not include "Exempted Exports from the Exporters' Union Registration".

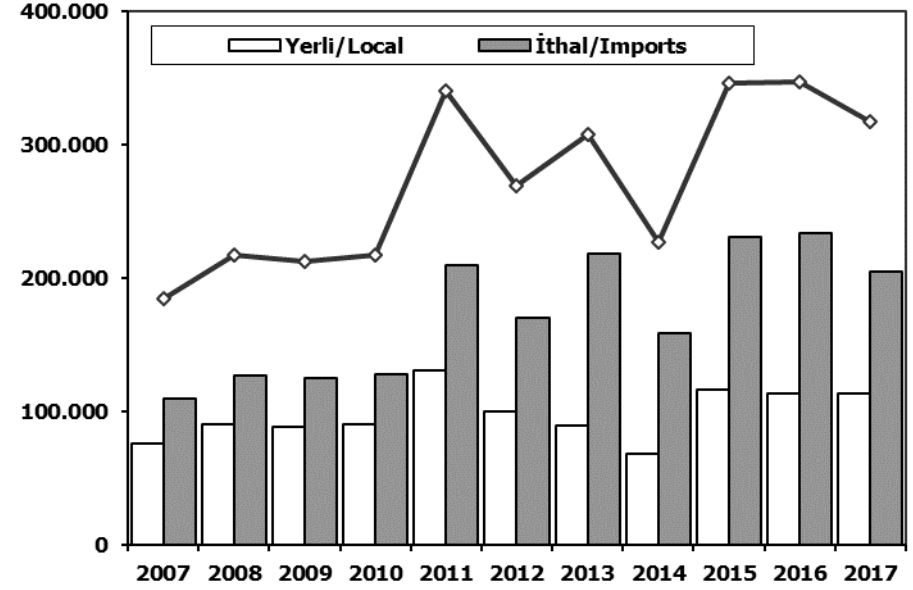
First 3 Sectors:

- 1- Automotive Industry
- 2- Ready Wear and Confection
- 3- Chemical Articles and Products

Toplam Pazar (Otomobil+T.Araç) Total Market (P.Cars+C.V)



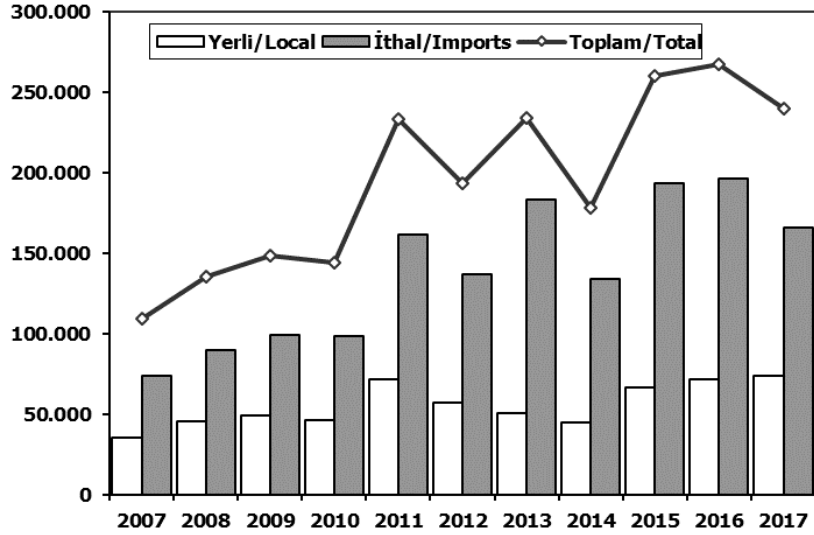
Hafif Araçlar Pazarı (2007-2017 Ocak-Mayıs) LV Market (2007-2017 January-May)



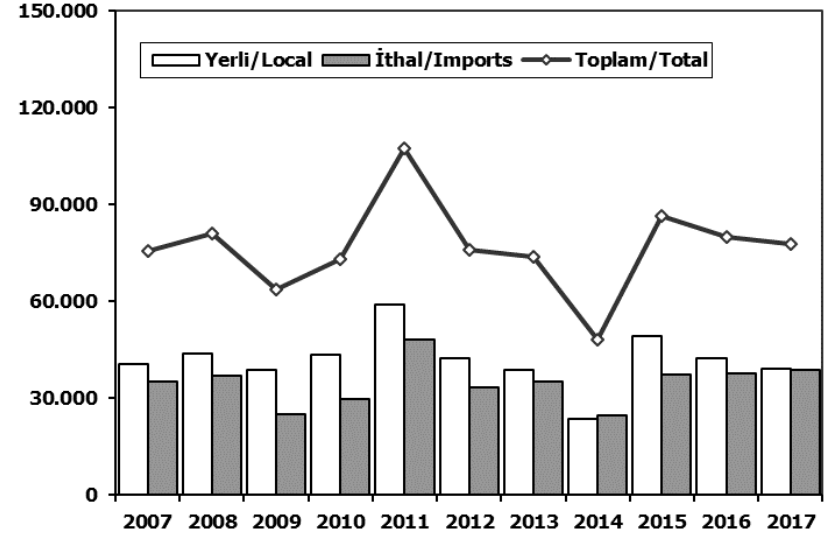
	2007	2008	2009	2010	2011	2012	2013	2014	2015	2016	5 Ay/Mo 2016	5 Ay/Mo 2017
Toplam/Total	634.206	526.544	575.869	793.172	910.867	817.620	893.124	807.486	1.011.194	1.007.857	356.794	325.193
İthalat/Imports	355.752	306.087	313.921	465.408	538.532	511.694	615.609	522.842	660.045	681.308	237.293	206.903
İthalat/Imports (%)	56	58	55	59	59	63	69	65	65	68	67	64

	2007	2008	2009	2010	2011	2012	2013	2014	2015	2016	2017
Yerli/Local	75.517	89.694	87.908	89.649	130.691	99.558	89.334	67.992	115.859	113.643	113.005
İthal/Imports	108.978	127.032	124.382	127.710	209.608	170.007	218.313	158.706	230.533	233.634	204.495
Toplam/Total	184.495	216.726	212.290	217.359	340.299	269.565	307.647	226.698	346.392	347.277	317.500
İthalat/Imports (%)	59	59	59	59	62	63	71	70	67	67	64

Otomobil Pazarı (2007-2017 Ocak-Mayıs) P.Cars Market (2007-2017 January-May)

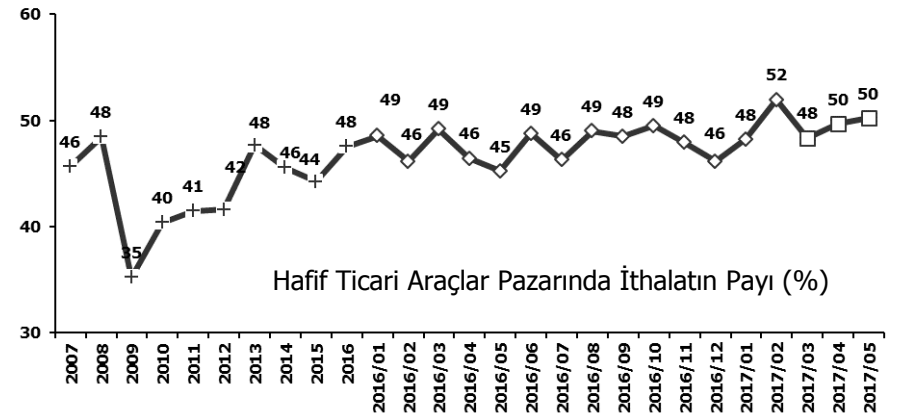
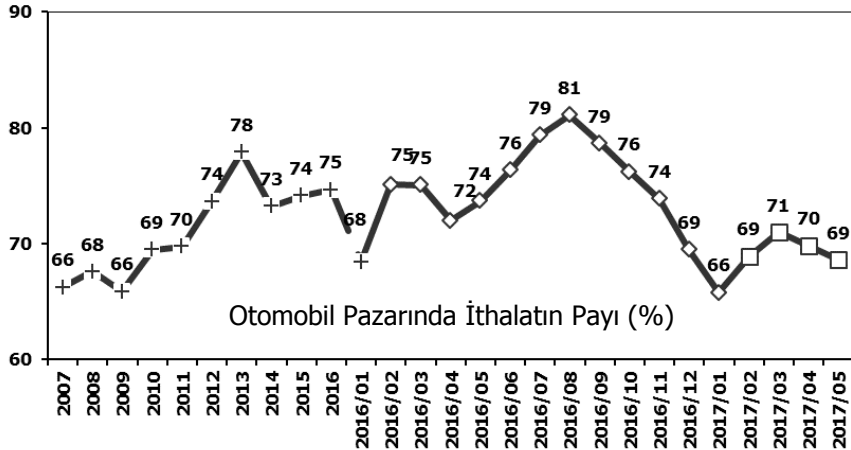


Hafif Ticari Araçlar Pazarı (2007-2017 Ocak-Mayıs) Light Commercial Vehicle Market (2007-2017 January-May)

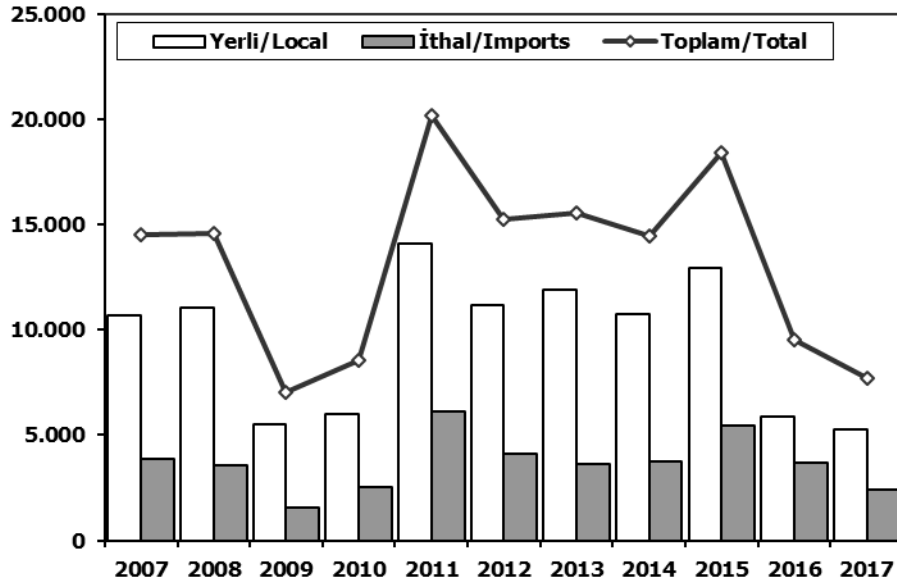


	2007	2008	2009	2010	2011	2012	2013	2014	2015	2016	2017
Yerli/Local	35.047	45.725	49.154	46.102	71.737	57.141	50.678	44.465	66.708	71.260	73.871
İthal/Imports	73.958	89.996	99.523	98.117	161.295	136.500	183.138	134.030	193.372	196.111	165.889
Toplam/Total	109.005	135.721	148.677	144.219	233.032	193.641	233.816	178.495	260.080	267.371	239.760
İthalat/Imports (%)	68	66	67	68	69	70	78	75	74	73	69

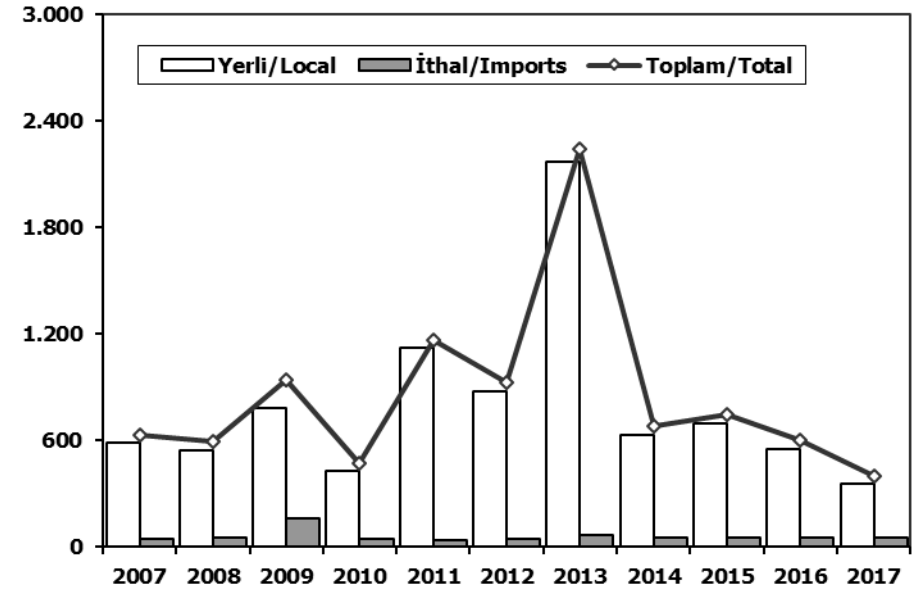
	2007	2008	2009	2010	2011	2012	2013	2014	2015	2016	2017
Yerli/Local	40.470	43.969	38.754	43.547	58.954	42.417	38.656	23.527	49.151	42.383	39.134
İthal/Imports	35.020	37.036	24.859	29.593	48.313	33.507	35.175	24.676	37.161	37.523	38.606
Toplam/Total	75.490	81.005	63.613	73.140	107.267	75.924	73.831	48.203	86.312	79.906	77.740
İthalat/Imports (%)	46	46	39	40	45	44	48	51	43	47	50



Ağır Ticari Araçlar Pazarı (2007-2017 Ocak-Mayıs) HCV Market (2007-2017 January-May)



Otobüs Pazarı (2007-2017 Ocak-Mayıs) Bus Market (2007-2017 January-May)

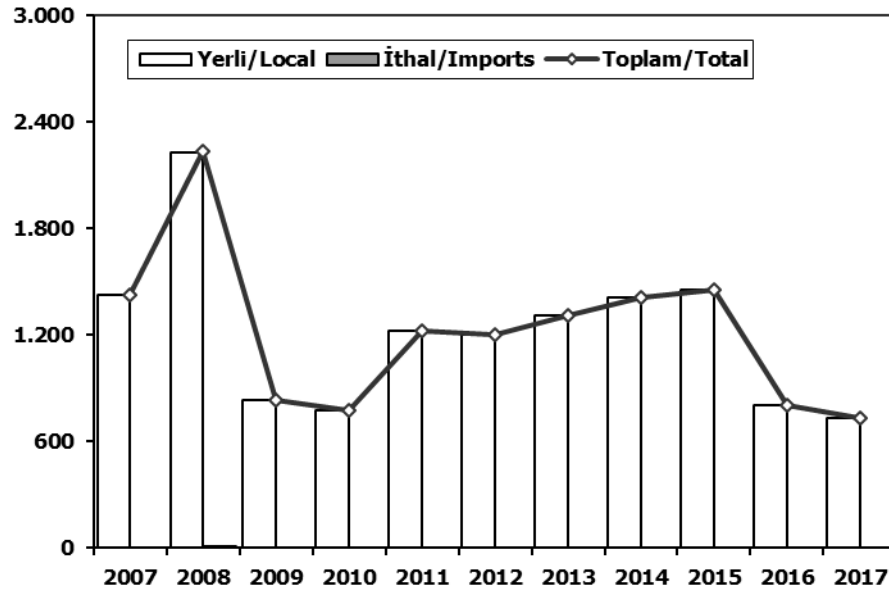


	2007	2008	2009	2010	2011	2012	2013	2014	2015	2016	2017
Yerli/Local	10.662	11.046	5.482	6.026	14.101	11.162	11.901	10.725	12.939	5.858	5.285
İthal/Imports	3.871	3.549	1.549	2.513	6.103	4.110	3.647	3.749	5.475	3.659	2.408
Toplam/Total	14.533	14.595	7.031	8.539	20.204	15.272	15.548	14.474	18.414	9.517	7.693
İthalat/Imports (%)	27	24	22	29	30	27	23	26	30	38	31

	2007	2008	2009	2010	2011	2012	2013	2014	2015	2016	2017
Yerli/Local	585	546	779	426	1.124	877	2.171	631	697	549	353
İthal/Imports	46	51	159	45	38	49	70	50	50	50	50
Toplam/Total	631	597	938	471	1.162	926	2.241	681	747	599	403
İthalat/Imports (%)	7	9	17	10	3	5	3	7	7	8	12

Midibüs Pazarı (2007-2017 Ocak-Mayıs) (7-9 mt / 25-35 Kişilik)

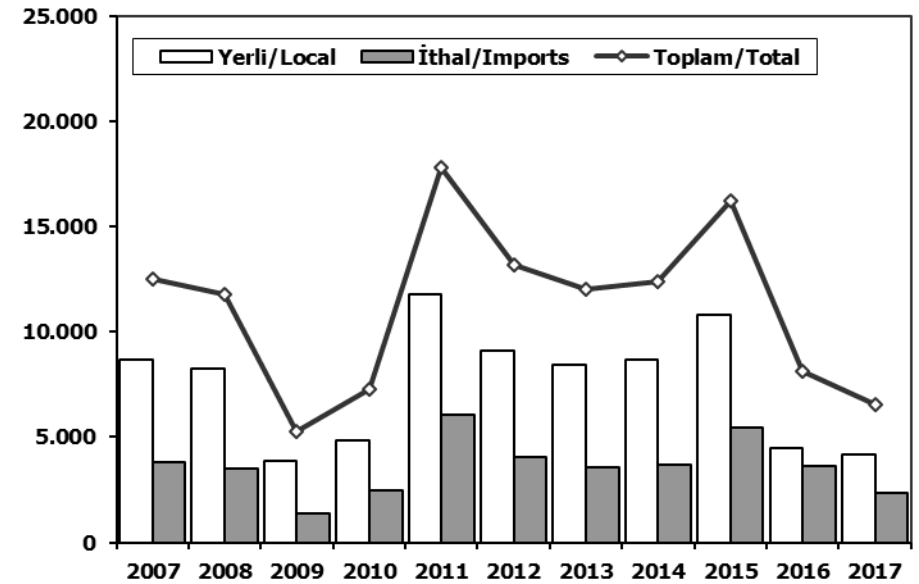
Midibus Market (2007-2017 January-May) (7-9 mt / 25-35 Passengers)



	2007	2008	2009	2010	2011	2012	2013	2014	2015	2016	2017
Yerli/Local	1.423	2.224	832	778	1.223	1.199	1.307	1.412	1.453	807	731
İthal/Imports	0	10	0	0	0	0	0	0	0	0	0
Toplam/Total	1.423	2.234	832	778	1.223	1.199	1.307	1.412	1.453	807	731
İthalat/Imports (%)	0	0	0	0	0	0	0	0	0	0	0

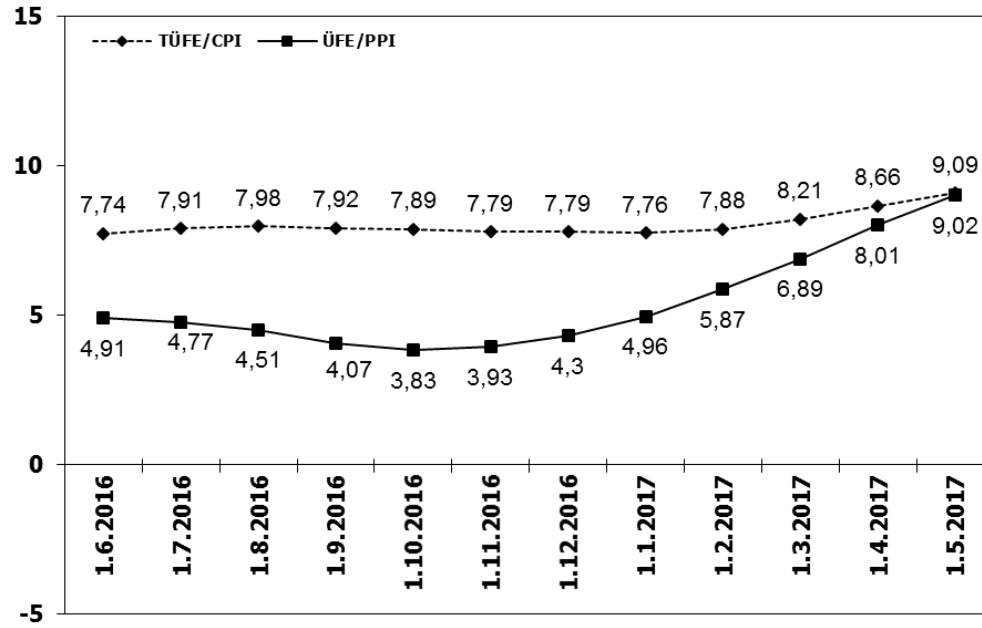
Kamyon Pazarı (2007-2017 Ocak-Mayıs)

Truck Market (2007-2017 January-May)

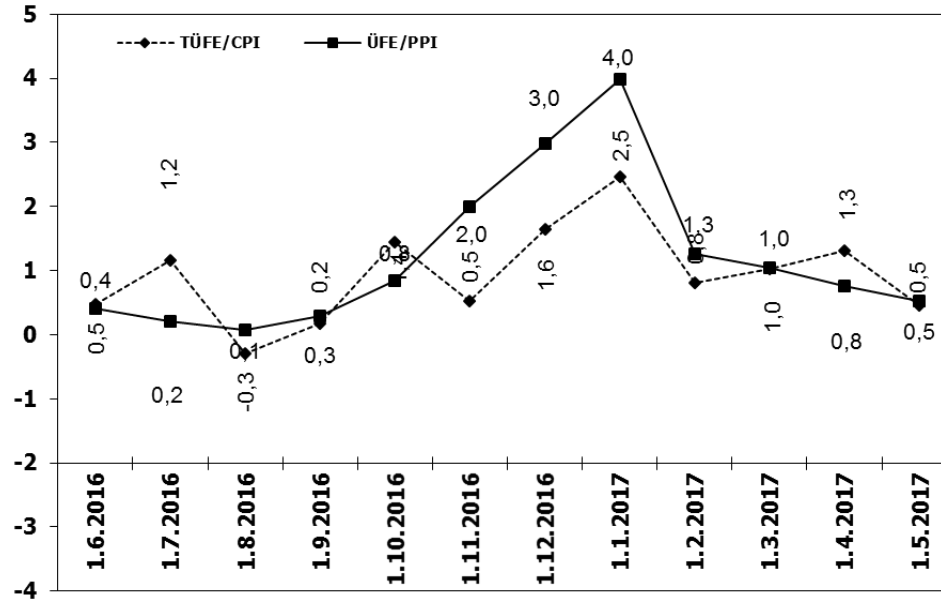


	2007	2008	2009	2010	2011	2012	2013	2014	2015	2016	2017
Yerli/Local	8.654	8.276	3.871	4.822	11.754	9.086	8.423	8.682	10.789	4.502	4.201
İthal/Imports	3.825	3.488	1.390	2.468	6.065	4.061	3.577	3.699	5.425	3.609	2.358
Toplam/Total	12.479	11.764	5.261	7.290	17.819	13.147	12.000	12.381	16.214	8.111	6.559
İthalat/Imports (%)	31	30	26	34	34	31	30	30	33	44	36

TÜFE ve ÜFE'nin 12 Aylık Ort. Değişimi (%) CPI and PPI 12 Months Avr. Changes (%)



TÜFE ve ÜFE'nin Aylık Değişimi (%) CPI and PPI Monthly Changes (%)



2017 Yılı İthal Hafif Araç Satışları

2017 Light Vehicles Import Sales

2017 YILI İTHAL OTOMOBİL SATIŞLARI / P.Cars Import 2017

	2016 TOPLAMI 2016 Total	1	2	3	4	5	6	7	8	9	10	11	12	2017 TOPLAMI 2017 Total
VOLKSWAGEN	101.761	3.059	4.903	6.729	6.672									21.363
DACIA	42.109	1.471	2.303	3.534	3.557									10.865
OPEL	55.471	1.577	1.652	4.014	3.838									11.081
HYUNDAI	26.463	1.413	1.393	2.563	2.003									7.372
NISSAN	30.513	1.154	1.519	2.083	2.254									7.010
PEUGEOT	25.440	637	1.884	2.139	2.604									7.264
FORD	33.453	1.175	1.199	2.760	2.902									8.036
RENAULT	42.422	844	1.462	3.148	2.879									8.333
SKODA	28.876	925	1.225	1.335	2.144									5.629
MERCEDES-BENZ	32.666	499	1.078	2.308	2.106									5.991
BMW	27.166	570	900	1.346	877									3.693
AUDI	22.005	625	702	1.287	1.673									4.287
CITROEN	17.041	515	761	1.765	1.654									4.695
SEAT	20.637	536	623	1.103	1.583									3.845
KIA	14.398	426	481	630	1.097									2.634
TOYOTA	11.513	439	413	439	427									1.718
HONDA	8.714	206	255	642	618									1.721
VOLVO	4.100	155	213	232	340									940
FIAT	3.103	106	187	229	185									707
SUZUKI	3.931	79	143	260	206									688
JEEP	2.192	111	104	162	184									561
MINI	1.688	55	81	82	80									298
MAZDA	1.427	54	76	109	100									339
PORSCHE	827	66	61	61	35									223
SUBARU	1.584	67	40	195	129									431
LAND ROVER	2.108	34	72	104	175									385
MITSUBISHI	709	28	43	50	45									166
ALFA ROMEO	634	17	43	59	27									146
SSANGYONG	507	10	20	32	27									89
LEXUS	64	16	3	6	11									36
INFINITI	120	6	12	8	2									28
JAGUAR	481	6	10	23	36									75
DS	400	9	0	1	13									23
SMART	192	2	7	20	19									48
MASERATI	72	2	7	3	5									17
ASTON MARTIN	29	1	2	3	2									8
BENTLEY	9	1	2	0	1									4
FERRARI	18	0	1	3	1									5
CHERY	144	0	0	0	0									0
PROTON	51	0	0	0	0									0
LAMBORGHINI	7	0	0	0	1									1
TOPLAM	565.045	16.896	23.880	39.467	40.512	0	0	0	0	0	0	0	0	120.755

2017 YILI İTHAL HAFİF TİCARİ ARAÇ SATIŞLARI / Light Commercial Vehicles Import 2017

	2016 TOPLAMI 2016 Total	1	2	3	4	5	6	7	8	9	10	11	12	2017 TOPLAMI 2017 Total
VOLKSWAGEN	32.772	1.255	1.599	2.121	2.362									7.337
RENAULT	15.091	519	718	1.327	1.238									3.802
CITROEN	6.884	438	669	424	807									2.338
MERCEDES-BENZ	8.070	343	496	687	742									2.268
TOYOTA	5.645	356	451	489	304									1.600
FIAT	5.885	257	448	490	602									1.797
DACIA	5.422	235	348	523	615									1.721
FORD	4.878	250	270	371	212									1.103
PEUGEOT	8.402	157	351	990	739									2.237
KIA	3.952	193	240	384	306									1.123
NISSAN	1.540	167	266	337	258									1.028
MITSUBISHI	3.533	173	213	127	209									722
HYUNDAI	2.244	134	174	242	308									858
IVECO	2.175	146	133	250	205									734
ISUZU	1.055	12	12	9	11									44
SSANGYONG	254	9	4	21	12									46
TATA	9	0	0	0	0									0
TOPLAM	107.811	4.644	6.392	8.792	8.930	0	0	0	0	0	0	0	0	28.758