



OTOMOTİV SANAYİİ DERNEĞİ
AUTOMOTIVE MANUFACTURERS ASSOCIATION

AYLIK RAPOR

Automotive Industry Monthly Report

Mart / March 2017

- **Üretim/Production**
- **Satış/Sales**
- **İthalat/Imports**
- **İhracat/Exports**

OSD "OICA" Üyesidir



OSD is a Member of "OICA"

2017 Mart Ayı Özeti / 2017 March Summary

		MART / MARCH			3 AY/ 3 MONTHS			SON 12 AYLIK / YoY		
		2016	2017	2017/2016 (%)	2016	2017	2017/2016 (%)	2016	2017	2017/2016 (%)
Üretim/Production	Toplam/Total	127.791	157.729	23	346.126	424.219	23	1.370.217	1.564.020	14
	Otomobil/P.Cars	77.051	109.443	42	207.996	300.255	44	800.590	1.043.147	30
Pazar/Market	Toplam/Total	85.214	75.581	-11	173.177	159.868	-8	1.000.141	994.550	-1
	Otomobil/P.Cars	63.975	55.616	-13	127.921	115.963	-9	726.526	744.980	3
İthalat/Import	Toplam/Total	58.489	48.816	-17	116.279	101.308	-13	659.429	666.339	1
	Otomobil/P.Cars	48.030	39.467	-18	94.485	80.243	-15	541.051	550.803	2
İhracat/Export	Toplam/Total	98.805	135.965	38	266.302	355.399	33	1.008.799	1.230.468	22
	Otomobil/P.Cars	60.631	96.313	59	159.401	254.796	60	605.442	841.104	39
İhracat / Export (\$)	Toplam/Total **	2.082.408.407	2.750.880.300	32	5.656.602.300	7.084.711.662	25	21.959.924.428	25.677.527.841	17
	Otomobil/P.Cars	632.958.323	1.169.513.927	85	1.591.051.540	3.012.998.739	89	6.713.887.433	9.758.931.338	45

PARAMETRELER / PARAMETERS		MART / MARCH			3 AY/ 3 MONTHS			SON 12 AYLIK / YoY		
		2016	2017	2017/2016 (%)	2016	2017	2017/2016 (%)	2016	2017	2017/2016 (%)
ÜFE/PPI		0,40	1,04	-	0,75	6,38	-	5,64	6,89	-
TÜFE/CPI		-0,04	1,02	-	1,75	4,34	-	7,96	8,21	-
Sanayi Endeksi/Industry Index		0,63	1,35	-	1,33	6,70	-	6,35	8,41	-
\$ (*)		2,8830	3,6312	26	2,9315	3,6593	25	2,8363	3,1872	12
EURO (*)		3,2034	3,8542	20	3,2153	3,8929	21	3,1255	3,4881	12
Japon Yeni (*)		2,5435	3,2047	26	2,5029	3,2029	28	2,3450	2,9191	24

(*) Ortalama Değerler / Average Values

(**) Toplam Sanayi / Total Industry Including Components

*Raporda yer alan üretim adetleri yalnızca OSD üyelerinin verilerini göstermektedir.
Production units in this report only show the data of OSD members.*

2016/2017 Yılları Üretim

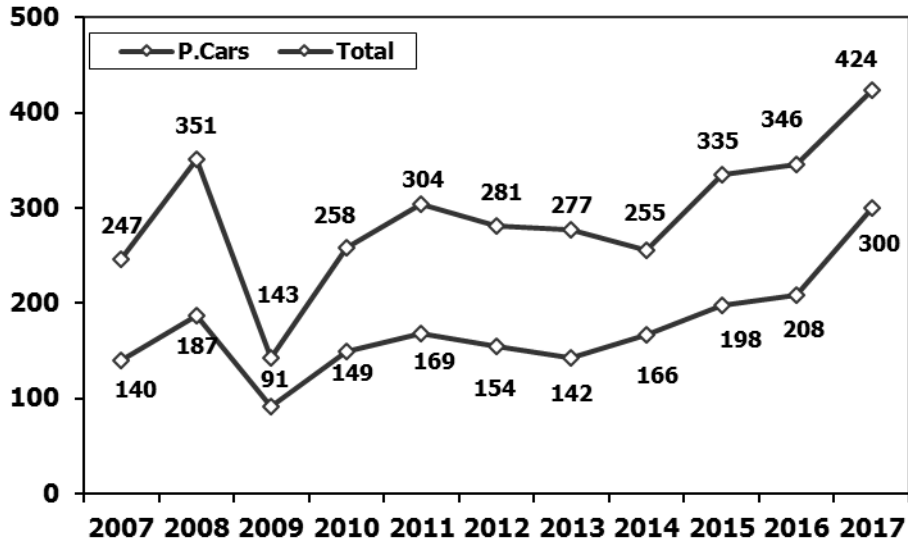
2016/2017 Production

K.KAMYON : AYA 3.5-12 Ton (L.Truck:GVW 3.5-12 Ton)

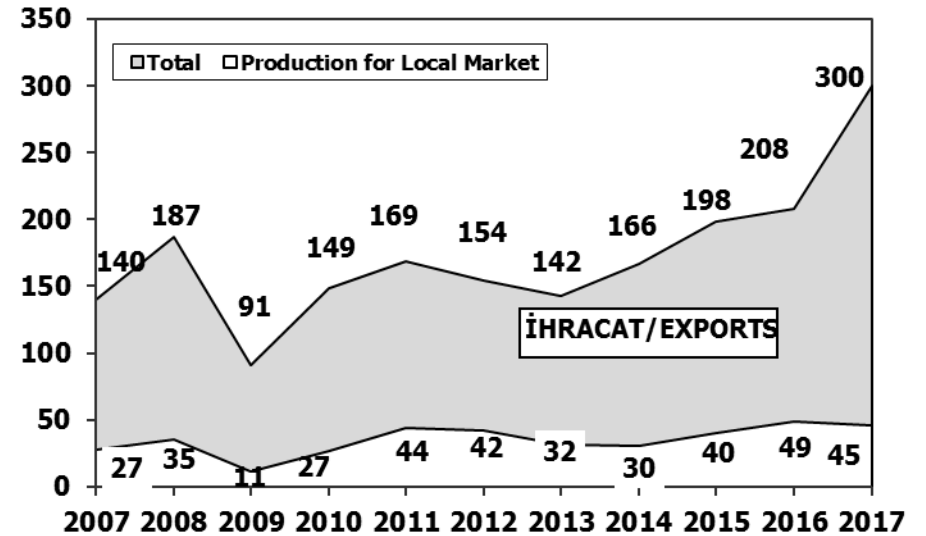
B.KAMYON : AYA 12 Ton'dan Büyük (M.Truck:GVW 12 Ton And Up)

TİPLER	MART AYI ÜRETİMİ March Production		3 AYLIK ÜRETİM 3 Months Production		DEĞİŞİM % Percent Change %	
	2016	2017	2016	2017	MART March	3 AY 3 Months
OTOMOBİL - Pass.Car	77.051	109.443	207.996	300.255	42	44
TİCARİ ARAÇLAR - Commercial Vehicles	50.740	48.286	138.130	123.964	-5	-10
* B. KAMYON - M. Truck	1.642	1.657	3.007	3.810	1	27
* K. KAMYON - L. Truck	84	465	144	914	454	535
* KAMYONET - Pick Up	46.515	40.214	128.089	103.985	-14	-19
* OTOBÜS - Bus	788	818	2.088	2.301	4	10
* MİNİBÜS - Minibus	1.400	4.765	4.178	12.138	240	191
* MİDİBÜS - Midibus	311	367	624	816	18	31
TAŞIT ARAÇLARI TOPLAM - MV Total	127.791	157.729	346.126	424.219	23	23
TRAKTÖR - F.Tractor	5.318	4.806	14.025	12.294	-10	-12
GENEL TOPLAM - Grand Total	133.109	162.535	360.151	436.513	22	21

Toplam Üretim ve Otomobil Üretimi (x1000) (Ocak-Mart)
Total & P.Cars Production (x1000) (January-March)

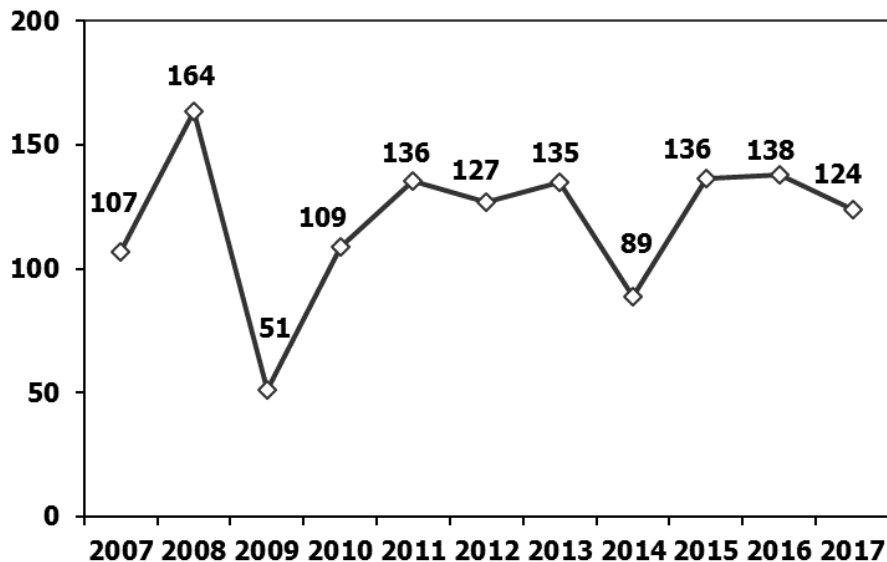


Otomobil Üretimi ve İhracat (x1000) (Ocak-Mart)
P.Cars Production & Exports (x1000) (January-March)



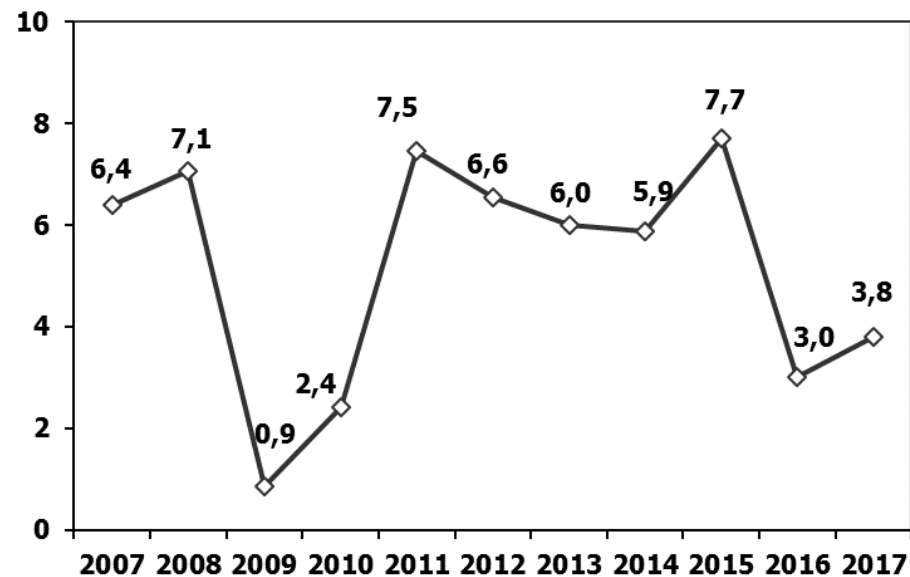
Ticari Araç Üretimi (x1000) (Ocak-Mart)

Commercial Vehicle Production (x1000) (January-March)



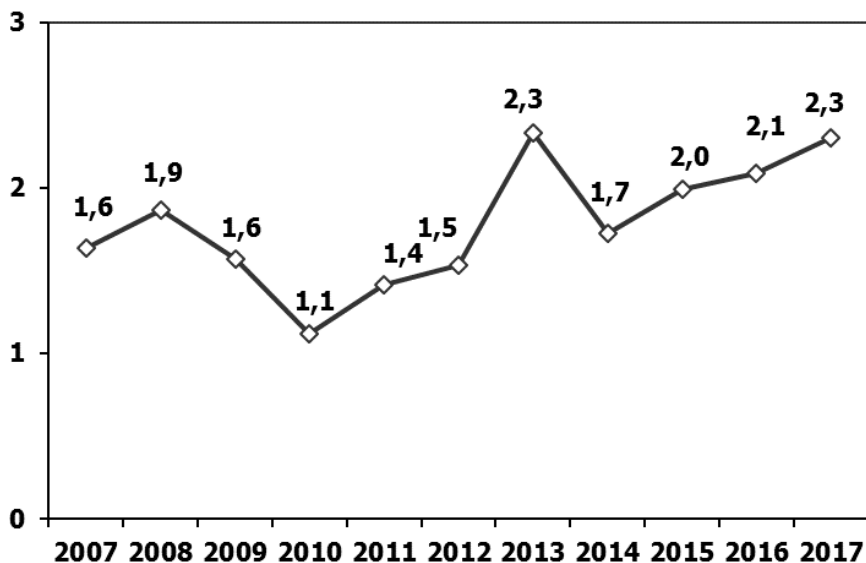
(AYA >12 Ton) Büyük Kamyon Üretimi (x1000) (Ocak-Mart)

(GVW >12 Ton) Heavy Truck Production (x1000) (January-March)



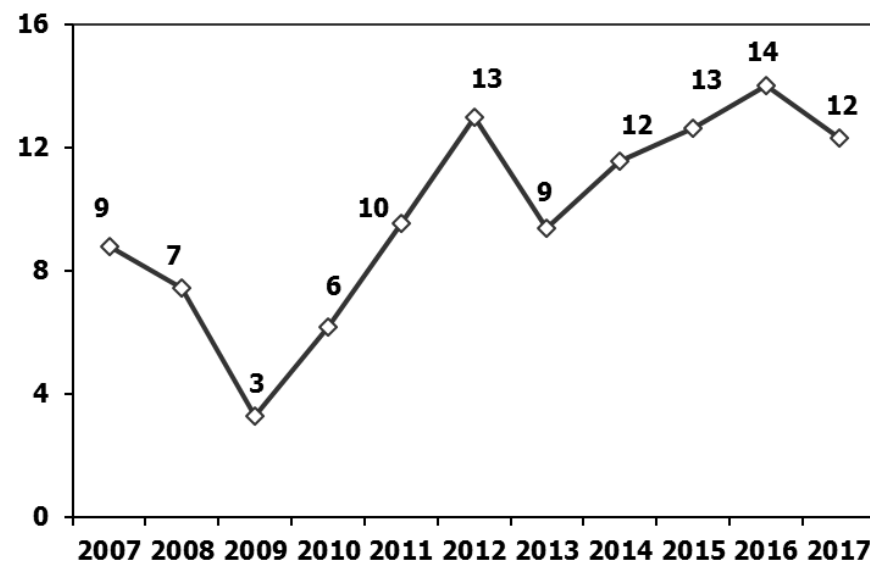
Otobüs Üretimi (x1000) (Ocak-Mart)

Bus Production (x1000) (January-March)



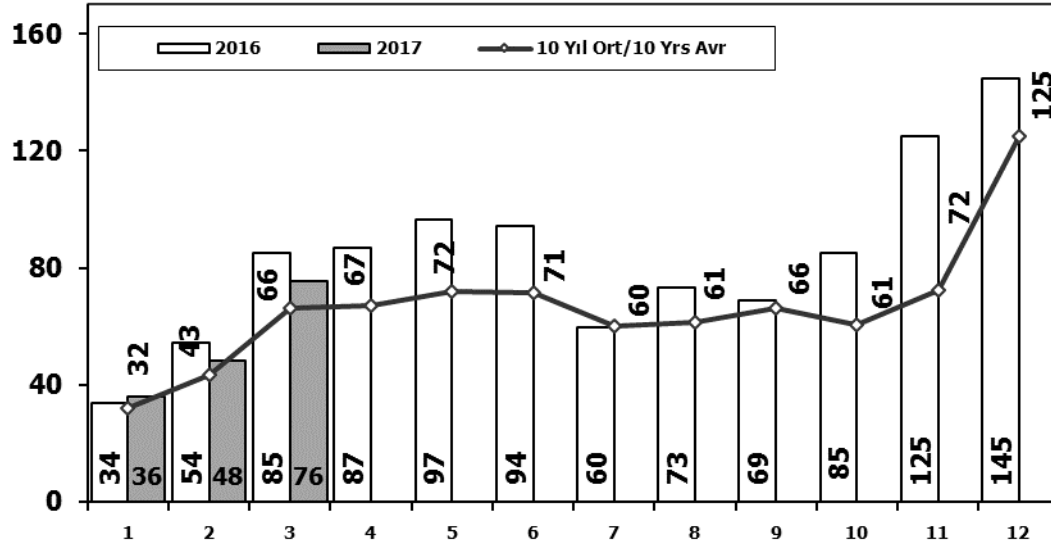
Traktör Üretimi (x1000) (Ocak-Mart)

F. Tractor Production (x1000) (January-March)



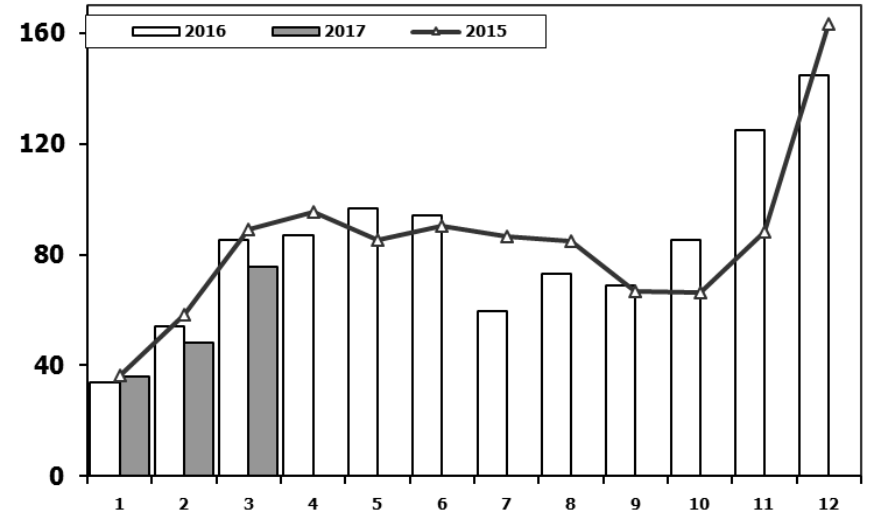
Toplam Pazarın Analizi (x1000)

Total Market Analysis (x1000)



Toplam Pazar (x1000)

Total Market (x1000)

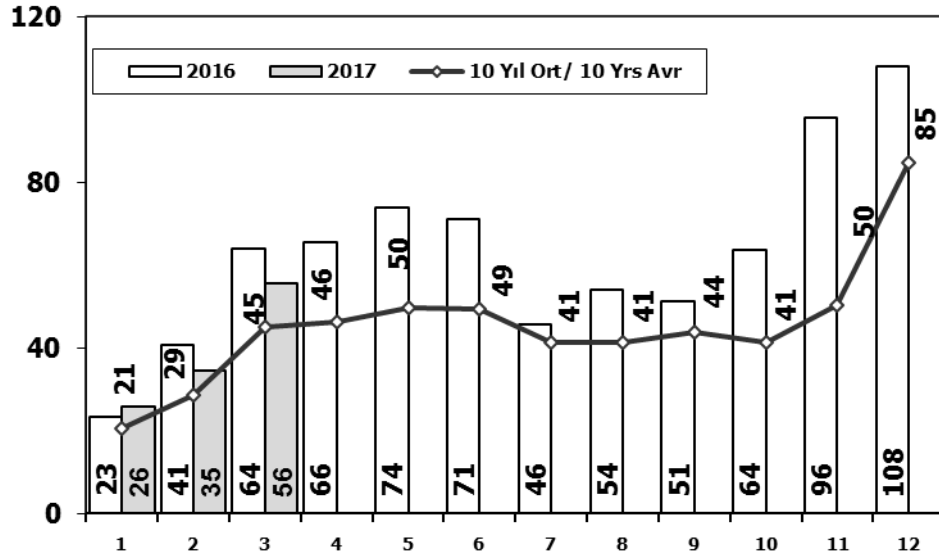


Aylar / Months	10 Yil Ort. 10 Yrs Avr. (x1000)	2017 (x1000)	%
1	32,1	36,1	12,6
2	43,2	48,1	11,4
3	66,3	75,6	14,0
Total	141,6	159,9	12,9

	1	2	3	4	5	6	7	8	9	10	11	12	3 Ay/Mo	Total
2007	24.950	31.702	45.488	45.633	51.255	51.661	50.117	54.171	50.078	56.058	67.017	106.076	102.140	634.206
2008	33.792	38.121	56.814	50.967	51.627	49.393	44.692	46.592	46.829	35.147	28.152	44.418	128.727	526.544
2009	20.631	22.846	56.531	54.426	64.887	63.102	30.246	37.092	83.403	22.117	29.202	91.386	100.008	575.869
2010	21.050	32.313	53.828	57.079	61.628	63.390	63.718	64.645	66.601	76.780	77.406	154.734	107.191	793.172
2011	47.658	62.348	83.333	82.071	85.093	85.863	65.364	61.378	63.643	72.640	67.195	134.281	193.339	910.867
2012	31.219	43.827	68.957	66.014	74.820	74.781	65.122	60.848	73.197	62.677	75.045	121.113	144.003	817.620
2013	37.140	50.931	72.688	77.015	85.421	77.771	74.726	67.383	71.037	60.399	83.017	135.596	160.759	893.124
2014	34.225	37.308	50.964	56.766	61.909	63.952	62.206	62.839	70.180	69.259	83.937	153.941	122.497	807.486
2015	36.576	58.533	89.121	95.431	85.145	90.463	86.625	84.683	66.622	66.520	88.043	163.432	184.230	1.011.194
2016	33.740	54.223	85.214	87.041	96.576	94.203	59.505	73.269	69.068	85.251	124.839	144.928	173.177	1.007.857
2017	36.146	48.141	75.581										159.868	159.868

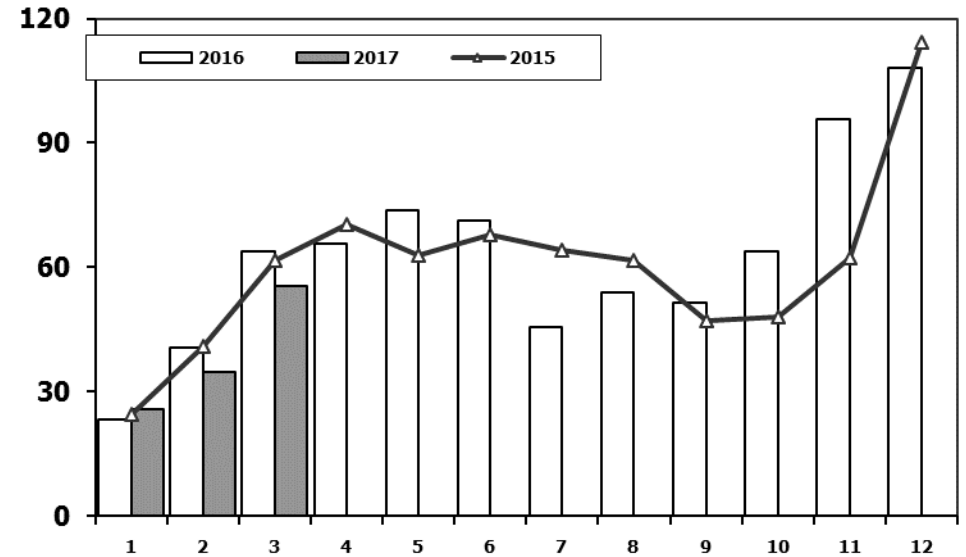
Otomobil Pazarının Analizi (x1000)

P.Cars Market Analysis (x1000)



Otomobil Pazarı (x1000)

P.Cars Market (x1000)

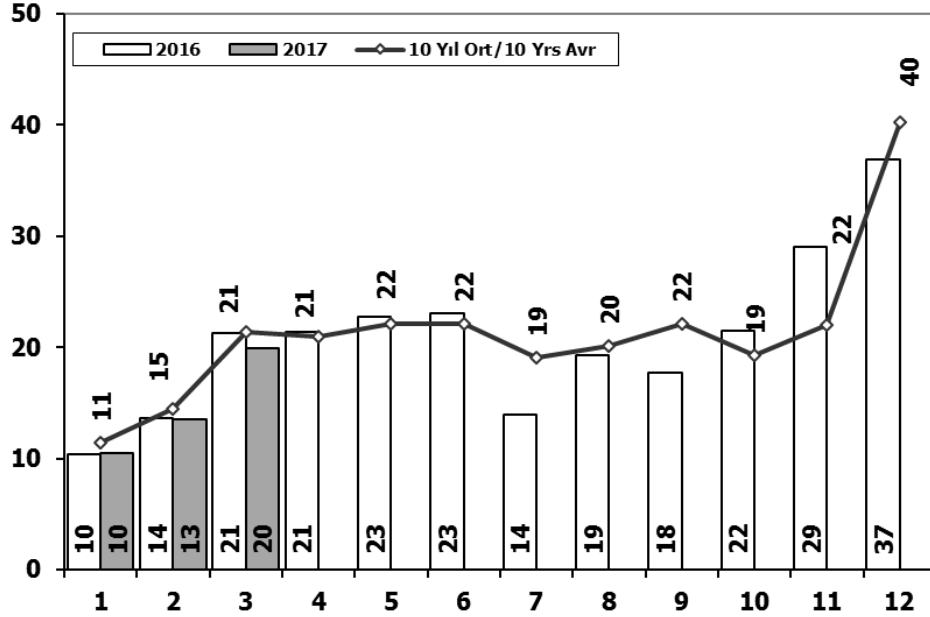


Ay / Months	10 Yil Ort. 10 Yrs Avr. (x1000)	2017 (x1000)	%
1	20,7	25,7	24,4
2	28,7	34,7	20,7
3	45,0	55,6	23,7
Total	94,3	116,0	22,9

	1	2	3	4	5	6	7	8	9	10	11	12	3 Ay/Mo	Total
2007	13.186	17.212	24.336	25.204	29.067	30.126	28.246	28.469	27.662	32.569	39.643	61.745	54.734	357.465
2008	18.588	21.196	34.147	30.313	31.477	28.724	25.530	26.102	27.053	19.788	17.201	25.879	73.931	305.998
2009	13.173	14.492	40.622	36.202	44.188	41.019	16.637	22.537	52.162	13.828	17.781	57.178	68.287	369.819
2010	12.594	20.651	33.958	36.549	40.467	42.086	41.399	42.222	42.477	47.859	50.061	99.461	67.203	509.784
2011	29.868	39.004	54.023	53.835	56.302	56.714	43.518	38.875	39.964	47.508	44.951	88.957	122.895	593.519
2012	21.077	29.189	47.270	45.645	50.460	50.849	44.531	41.236	49.360	43.440	52.297	80.926	97.536	556.280
2013	25.835	36.814	51.785	56.999	62.383	58.290	55.712	51.611	52.925	46.985	64.117	101.199	114.434	664.655
2014	24.368	27.167	37.812	42.769	46.379	47.278	46.602	45.131	49.262	50.814	59.695	110.054	89.347	587.331
2015	24.498	40.817	61.676	70.211	62.878	67.766	64.218	61.753	47.088	47.954	62.397	114.340	126.991	725.596
2016	23.358	40.588	63.975	65.618	73.832	71.111	45.566	53.977	51.340	63.746	95.783	108.044	127.921	756.938
2017	25.689	34.658	55.616										115.963	115.963

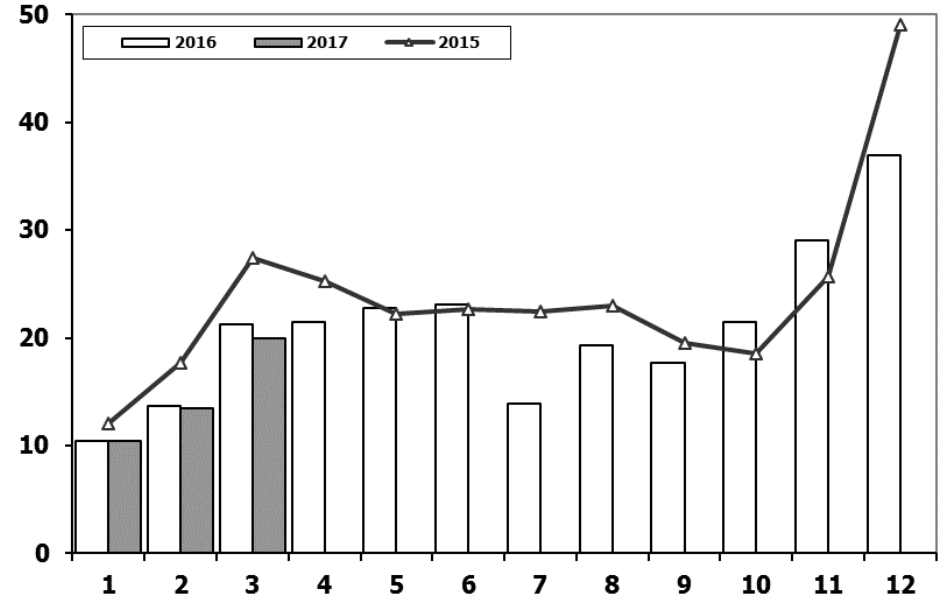
Ticari Araç Pazarının Analizi (x1000)

CV Market Analysis (x1000)



Ticari Araç Pazarı (x1000)

CV Total Market (x1000)

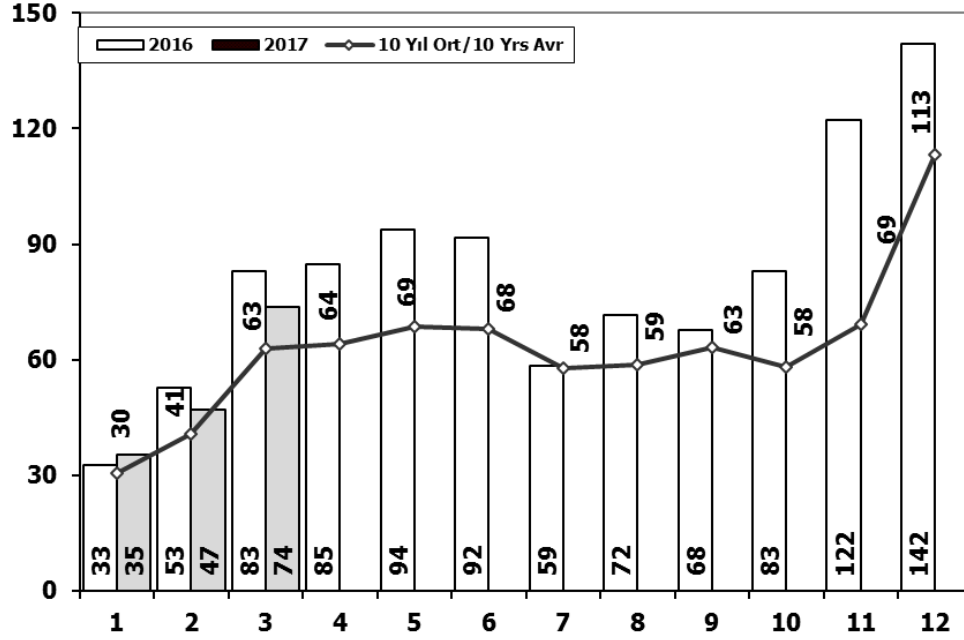


Aylar / Months	10 Yıl Ort. 10 Yrs Avr. (x1000)	2017 (x1000)	%
1	11,4	10,5	-8,6
2	14,5	13,5	-7,0
3	21,3	20,0	-6,4
Total	47,3	43,9	-7,1

	1	2	3	4	5	6	7	8	9	10	11	12	3 Ay/Mo	Total
2007	11.764	14.490	21.152	20.429	22.188	21.535	21.871	25.702	22.416	23.489	27.374	44.331	47.406	276.741
2008	15.204	16.925	22.667	20.654	20.150	20.669	19.162	20.490	19.776	15.359	10.951	18.539	54.796	220.546
2009	7.458	8.354	15.909	18.224	20.699	22.083	13.609	14.555	31.241	8.289	11.421	34.208	31.721	206.050
2010	8.456	11.662	19.870	20.530	21.161	21.304	22.319	22.423	24.124	28.921	27.345	55.273	39.988	283.388
2011	17.790	23.344	29.310	28.236	28.791	29.149	21.846	22.503	23.679	25.132	22.244	45.324	70.444	317.348
2012	10.142	14.638	21.687	20.369	24.360	23.932	20.591	19.612	23.837	19.237	22.748	40.187	46.467	261.340
2013	11.305	14.117	20.903	20.016	23.038	19.481	19.014	15.772	18.112	13.414	18.900	34.397	46.325	228.469
2014	9.857	10.141	13.152	13.997	15.530	16.674	15.604	17.708	20.918	18.445	24.242	43.887	33.150	220.155
2015	12.078	17.716	27.445	25.220	22.267	22.697	22.407	22.930	19.534	18.566	25.646	49.092	57.239	285.598
2016	10.382	13.635	21.239	21.423	22.744	23.092	13.939	19.292	17.728	21.505	29.056	36.884	45.256	250.919
2017	10.457	13.483	19.965										43.905	43.905

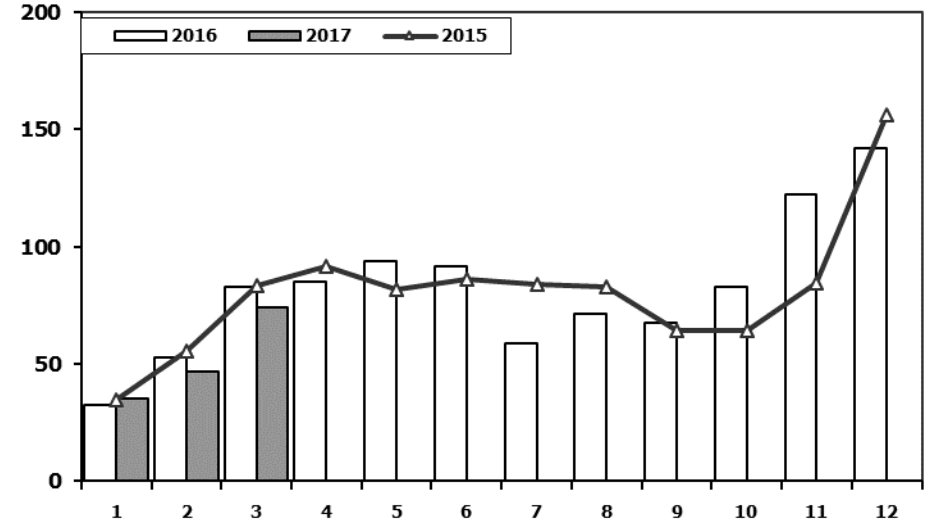
Hafif Araç Pazarının Analizi (x1000)

LV Market Analysis (x1000)



Hafif Araç Pazarı (x1000)

LV Total Market (x1000)

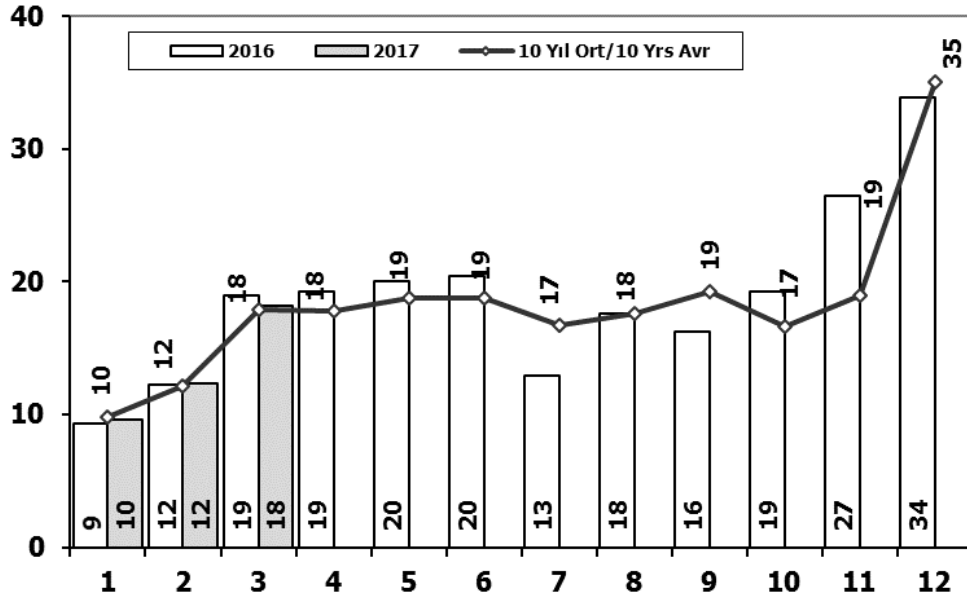


Aylar / Months	10 Yıl Ort. 10 Yrs Avr. (x1000)	2017 (x1000)	%
1	30,4	35,3	16,1
2	40,9	47,0	14,9
3	62,8	73,8	17,5
Total	134,1	156,1	16,4

	1	2	3	4	5	6	7	8	9	10	11	12	3 Ay/Mo	Total
2007	23.117	29.184	41.890	42.366	47.938	48.674	47.490	50.558	46.581	52.725	63.313	100.926	94.191	594.762
2008	31.527	35.251	53.649	47.701	48.598	46.324	42.156	43.670	43.932	32.884	26.253	42.078	120.427	494.023
2009	19.606	21.742	55.111	52.640	63.191	61.067	28.845	35.609	81.397	21.033	27.962	88.923	96.459	557.126
2010	20.095	31.172	51.769	54.946	59.377	60.896	61.345	61.764	63.814	73.404	73.962	148.369	103.036	760.913
2011	44.892	58.663	78.403	77.695	80.646	81.573	63.044	58.406	60.129	69.421	63.657	127.910	181.958	864.439
2012	29.545	41.324	64.884	62.949	70.863	71.067	62.304	58.148	69.629	59.938	71.710	115.400	135.753	777.761
2013	35.523	48.307	68.774	73.575	81.468	74.096	71.596	65.043	67.963	58.014	79.301	129.718	152.604	853.378
2014	32.670	35.021	47.581	53.305	58.121	60.163	59.907	60.199	66.531	66.573	80.621	146.989	115.272	767.681
2015	34.615	55.331	83.302	91.602	81.542	86.158	83.836	82.577	64.025	64.255	84.601	156.173	173.248	968.017
2016	32.713	52.825	82.948	84.887	93.904	91.540	58.533	71.556	67.593	83.000	122.309	141.912	168.486	983.720
2017	35.323	46.965	73.802										156.090	156.090

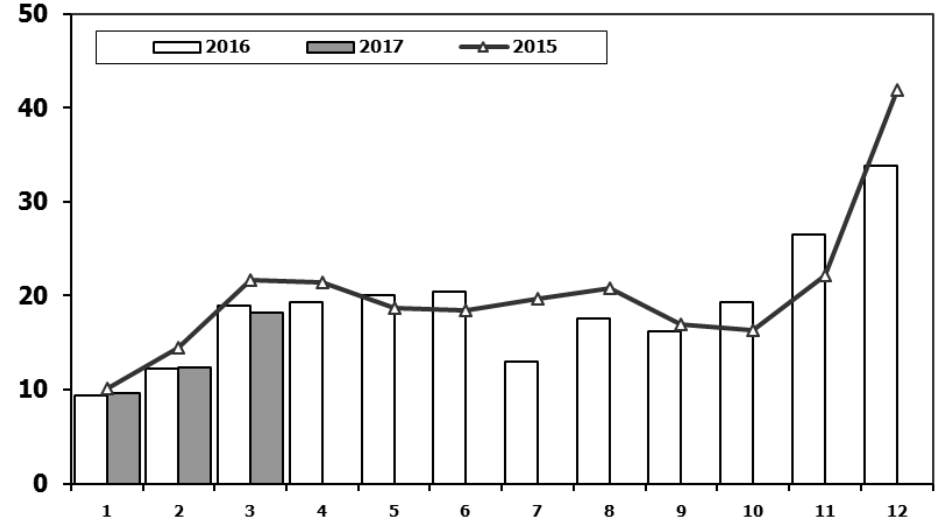
Hafif Ticari Araç Pazarının Analizi (x1000)

LCV Market Analysis (x1000)



Hafif Ticari Araç Pazarı (x1000)

LCV Total Market (x1000)

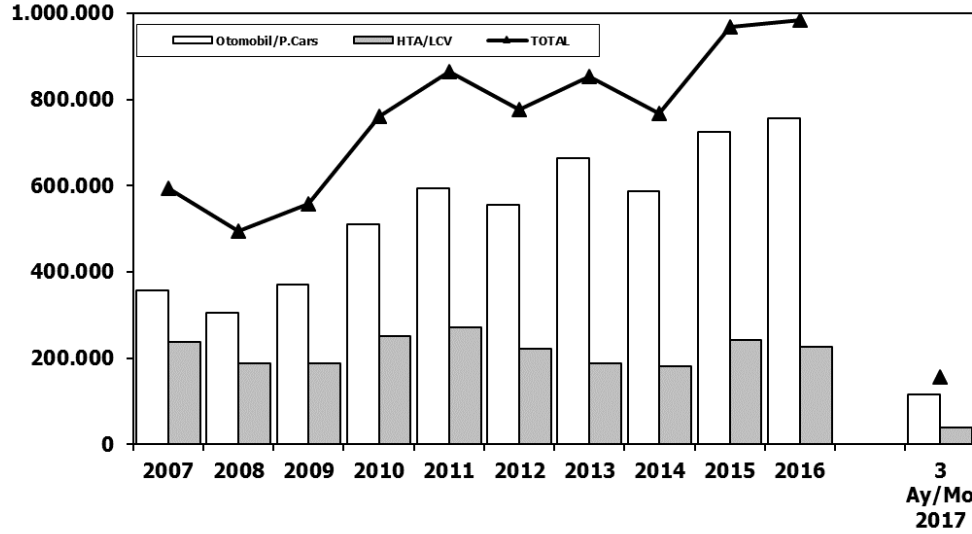


Aylar / Months	10 Yil Ort. 10 Yrs Avr. (x1000)	2017 (x1000)	%
1	9,8	9,6	-1,5
2	12,2	12,3	1,1
3	17,9	18,2	1,8
Total	39,8	40,1	0,8

	1	2	3	4	5	6	7	8	9	10	11	12	3 Ay/Mo	Total
2007	9.931	11.972	17.554	17.162	18.871	18.548	19.244	22.089	18.919	20.156	23.670	39.181	39.457	237.297
2008	12.939	14.055	19.502	17.388	17.121	17.600	16.626	17.568	16.879	13.096	9.052	16.199	46.496	188.025
2009	6.433	7.250	14.489	16.438	19.003	20.048	12.208	13.072	29.235	7.205	10.181	31.745	28.172	187.307
2010	7.501	10.521	17.811	18.397	18.910	18.810	19.946	19.542	21.337	25.545	23.901	48.908	35.833	251.129
2011	15.024	19.659	24.380	23.860	24.344	24.859	19.526	19.531	20.165	21.913	18.706	38.953	59.063	270.920
2012	8.468	12.135	17.614	17.304	20.403	20.218	17.773	16.912	20.269	16.498	19.413	34.474	38.217	221.481
2013	9.688	11.493	16.989	16.576	19.085	15.806	15.884	13.432	15.038	11.029	15.184	28.519	38.170	188.723
2014	8.302	7.854	9.769	10.536	11.742	12.885	13.305	15.068	17.269	15.759	20.926	36.935	25.925	180.350
2015	10.117	14.514	21.626	21.391	18.664	18.392	19.618	20.824	16.937	16.301	22.204	41.833	46.257	242.421
2016	9.355	12.237	18.973	19.269	20.072	20.429	12.967	17.579	16.253	19.254	26.526	33.868	40.565	226.782
2017	9.634	12.307	18.186										40.127	40.127

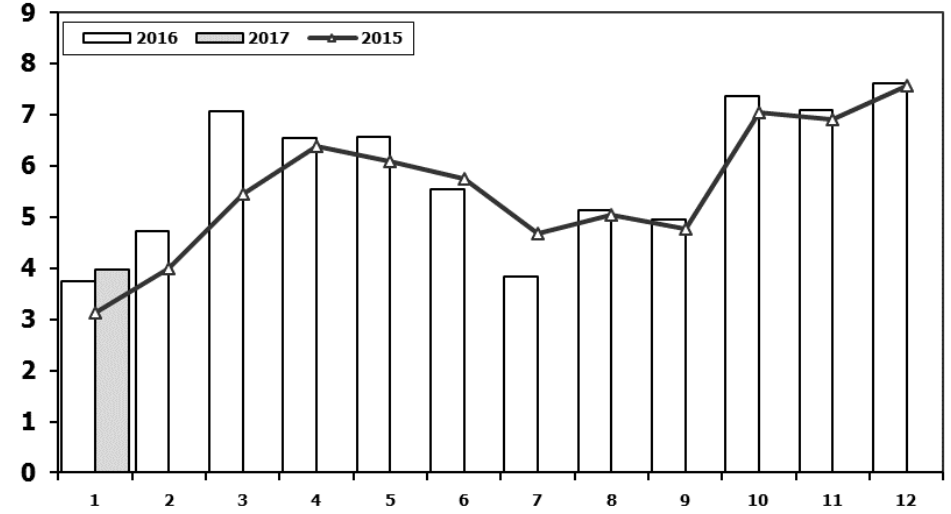
Hafif Araç Pazarı (AYA < 3.5 Ton)

Light Vehicle Market (GVW < 3.5 Ton)



Traktör Pazarı (x1000)

F.Tractor Market (x1000)



	2007	2008	2009	2010	2011	2012	2013	2014	2015	2016	3 Ay/Mo 2017
Otomobil/P.Cars	357.465	305.998	369.819	509.784	593.519	556.280	664.655	587.331	725.596	756.938	115.963
HTA/LCV	237.297	188.025	187.307	251.129	270.920	221.481	188.723	180.350	242.421	226.782	40.127
TOTAL	594.762	494.023	557.126	760.913	864.439	777.761	853.378	767.681	968.017	983.720	156.090
HTA/LCV (%)	40	38	34	33	31	28	22	23	25	23	26

	1	2	3	4	5	6	7	8	9	10	11	12	1 Ay/Mo	Total
2007	2.816	2.244	3.053	2.657	3.188	3.141	2.497	2.381	3.025	2.755	3.549	3.097	2.816	34.403
2008	2.770	1.855	3.395	3.081	2.769	2.400	2.232	2.485	1.856	1.773	1.305	1.101	2.770	27.022
2009	717	572	688	1.070	1.297	1.256	1.054	1.183	1.117	1.356	1.304	2.144	717	13.758
2010	1.111	1.991	2.330	3.039	2.567	2.638	1.965	3.019	2.806	4.424	3.978	6.168	1.111	36.036
2011	2.975	5.242	5.927	5.358	6.016	6.335	4.534	4.051	4.140	5.828	4.943	4.992	2.975	60.341
2012	2.362	1.983	4.348	6.579	6.273	4.569	3.837	3.158	3.618	4.027	4.807	4.757	2.362	50.318
2013	2.161	2.432	4.005	4.585	5.616	3.136	4.574	3.408	4.935	4.762	5.781	6.891	2.161	52.286
2014	2.169	3.512	4.476	4.905	5.094	5.028	4.233	4.920	5.619	5.743	6.250	7.409	2.169	59.358
2015	3.124	3.984	5.460	6.383	6.078	5.748	4.677	5.044	4.765	7.049	6.898	7.564	3.124	66.774
2016	3.739	4.731	7.067	6.546	6.575	5.543	3.833	5.134	4.945	7.372	7.090	7.603	3.739	70.178
2017	3.974												3.974	3.974

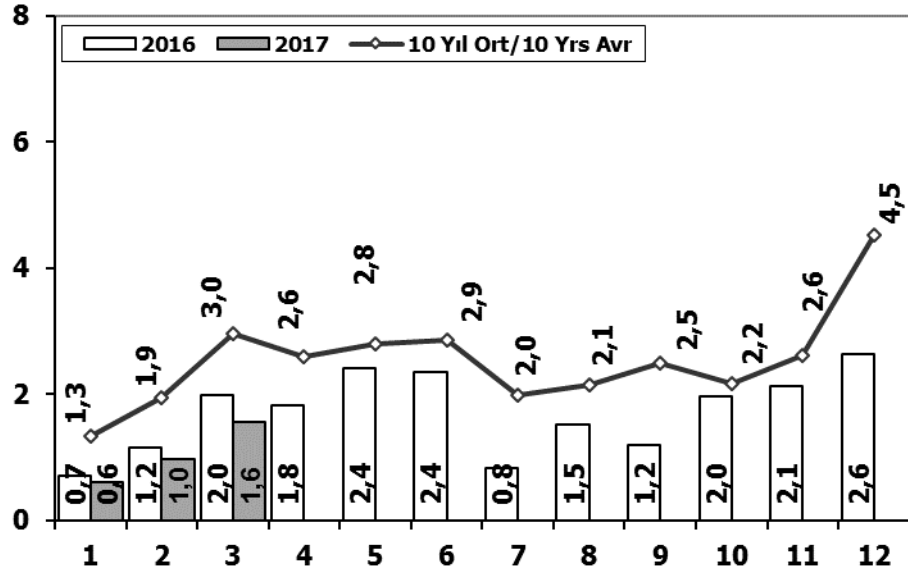
Kaynak: TÜİK trafik kayıtları.

Rakamlar, son iki model yılına ait traktör tescillerinden oluşmaktadır.

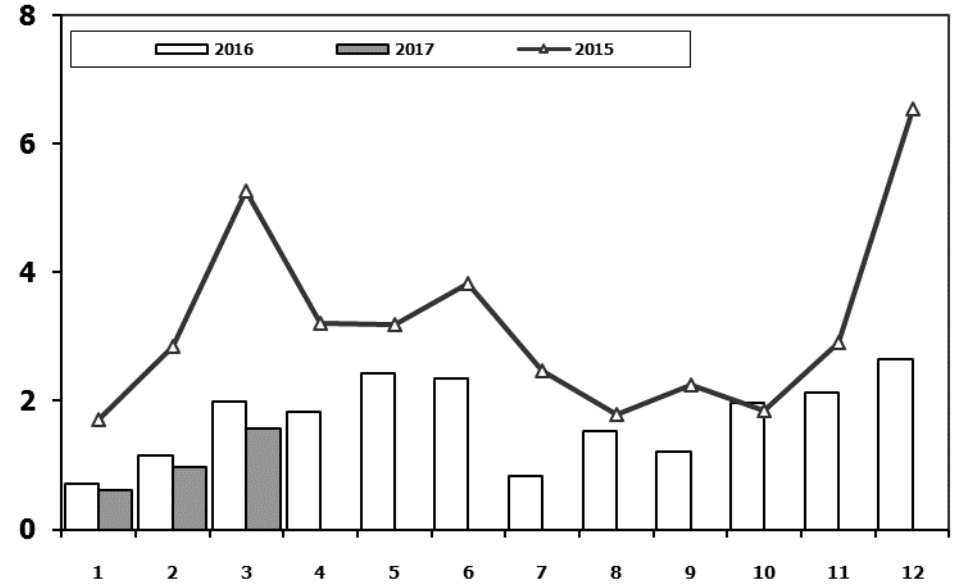
Source: Turkish Statistical Institute – Traffic registrations

Data represents the last two model year's farm tractors registration figures

Kamyon Pazarının Analizi (x1000) AYA > 5 Ton Truck Market Analysis (x1000) GVW > 5 Ton



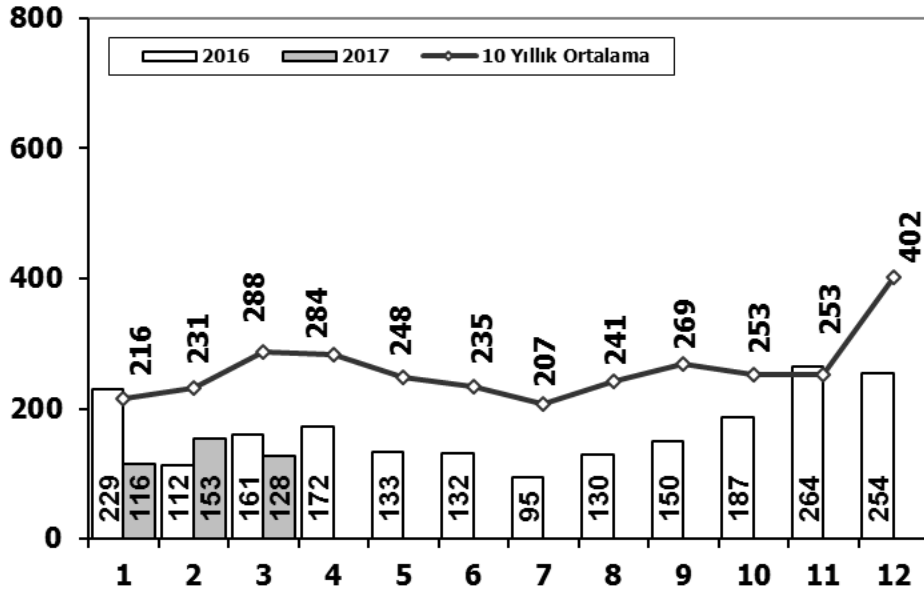
Kamyon Pazarı (x1000) AYA > 5 Ton Truck Market (x1000) GVW > 5 Ton



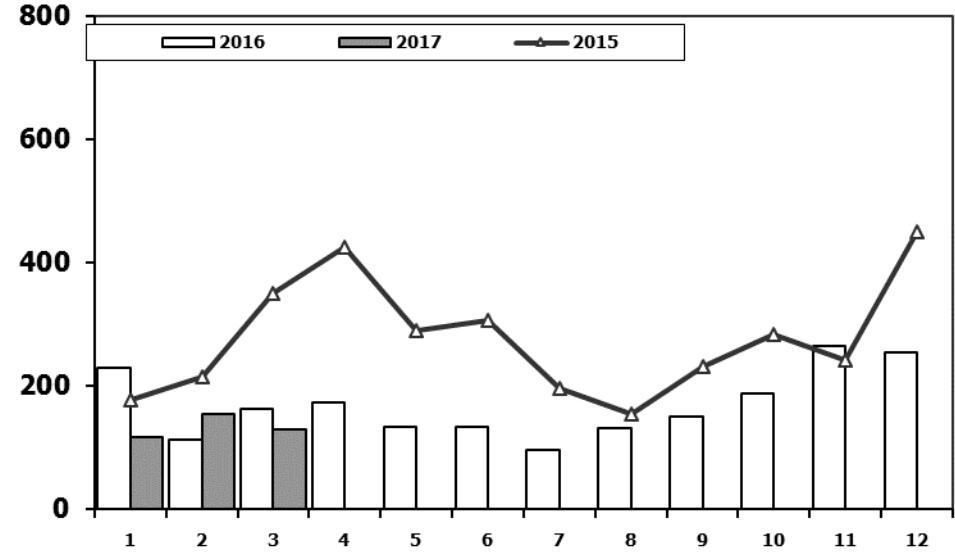
Aylar / Months	10 Yil Ort. 10 Yrs Avr. (x1000)	2017 (x1000)	%
1	1,3	0,6	-54,8
2	1,9	1,0	-50,4
3	3,0	1,6	-47,1
Total	6,3	3,1	-49,8

	1	2	3	4	5	6	7	8	9	10	11	12	3 Ay/Mo	Total
2007	1.554	2.055	3.065	2.940	2.865	2.613	2.372	3.145	2.988	2.886	3.258	4.444	6.674	34.185
2008	1.797	2.309	2.621	2.578	2.459	2.526	2.067	2.377	2.390	1.790	1.512	1.834	6.727	26.260
2009	771	759	1.034	1.342	1.355	1.651	1.156	1.205	1.780	866	981	2.015	2.564	14.915
2010	777	968	1.772	1.807	1.966	2.205	2.093	2.446	2.444	3.071	3.136	5.677	3.517	28.362
2011	2.552	3.292	4.418	3.754	3.803	3.749	1.996	2.478	3.081	2.774	3.108	5.787	10.262	40.792
2012	1.375	2.159	3.595	2.697	3.321	3.250	2.450	2.277	2.991	2.244	3.006	5.000	7.129	34.365
2013	1.077	1.931	3.127	2.720	3.145	2.951	2.411	1.845	2.554	1.801	3.173	5.025	6.135	31.760
2014	1.117	1.949	2.818	3.092	3.405	3.438	2.083	2.390	3.281	2.494	3.028	6.313	5.884	35.408
2015	1.705	2.841	5.270	3.208	3.190	3.824	2.463	1.798	2.244	1.848	2.902	6.540	9.816	37.833
2016	718	1.154	1.984	1.835	2.420	2.358	830	1.529	1.204	1.962	2.123	2.640	3.856	20.757
2017	607	964	1.570										3.141	3.141

Midibüs Pazarının Analizi (7-9 mt / 25-35 Kişilik) Midibus Market Analysis (7-9 mt / 25-35 Passengers)



Midibüs Pazarı (7-9 mt / 25-35 Kişilik Midibüs) Midibus Market (7-9 mt / 25-35 Passengers)

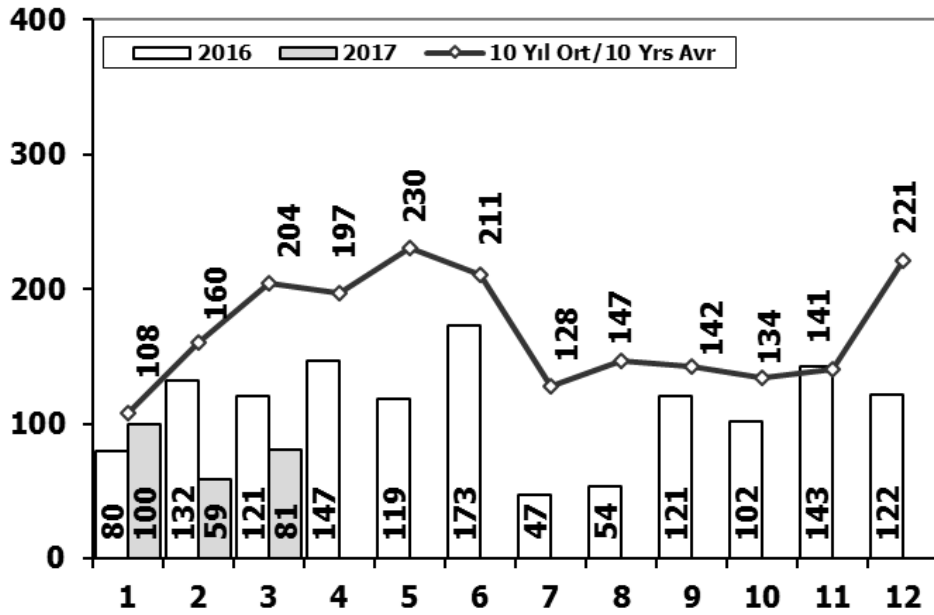


	1	2	3	4	5	6	7	8	9	10	11	12	3 Ay/Mo	Total
2007	207	272	404	238	302	283	164	365	399	279	283	465	883	3.661
2008	391	476	436	512	419	331	368	380	341	352	246	270	1.303	4.522
2009	154	124	160	220	174	198	160	175	168	143	206	323	438	2.205
2010	155	131	185	167	140	138	129	246	236	206	202	437	471	2.372
2011	138	195	294	316	280	258	211	305	301	276	260	270	627	3.104
2012	179	257	277	229	257	239	216	249	325	269	189	398	713	3.084
2013	191	268	289	276	283	241	367	235	305	392	415	697	748	3.959
2014	335	265	326	280	206	223	161	174	229	140	226	454	926	3.019
2015	177	213	350	425	288	306	195	154	231	283	240	450	740	3.312
2016	229	112	161	172	133	132	95	130	150	187	264	254	502	2.019
2017	116	153	128										397	397

Aylar / Months	10 Yıl Ort. 10 Yrs Avr.	2017	%
1	216	116	-46
2	231	153	-34
3	288	128	-56
Total	735	397	-46

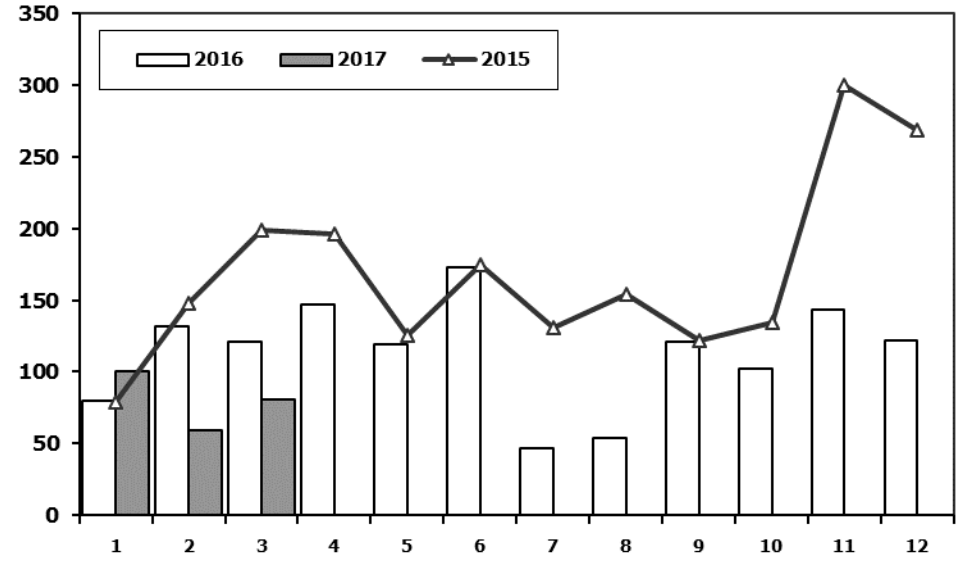
Otobüs Pazarının Analizi

Bus Market Analysis



Otobüs Pazarı

Bus Market

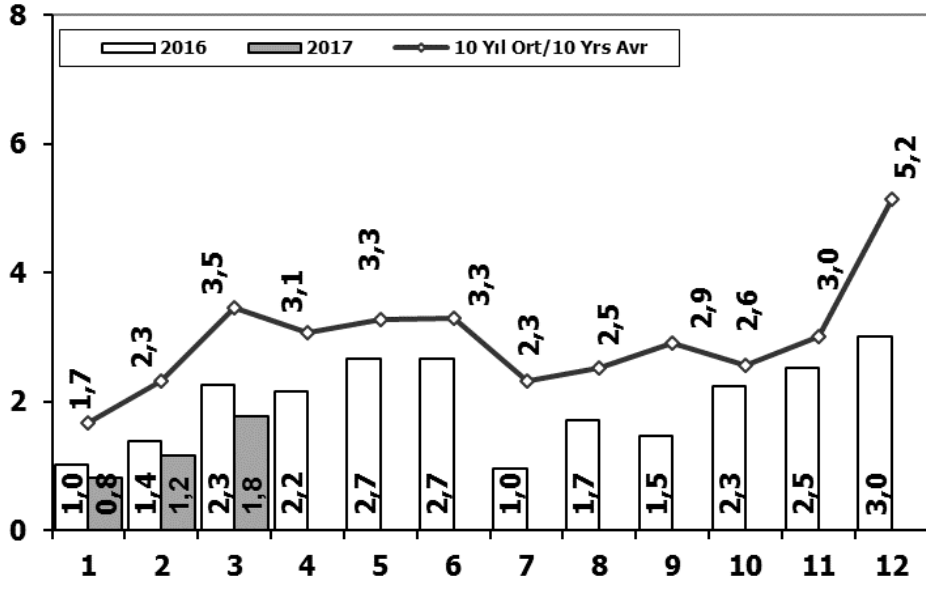


	1	2	3	4	5	6	7	8	9	10	11	12	3 Ay/Mo	Total
2007	72	191	129	89	150	91	91	103	110	168	163	241	392	1.598
2008	77	85	108	176	151	212	101	165	166	121	141	236	270	1.739
2009	100	221	226	224	167	186	85	103	58	75	53	125	547	1.623
2010	23	42	102	159	145	151	151	189	107	99	106	251	167	1.525
2011	76	198	218	306	364	283	113	189	132	169	170	314	492	2.532
2012	120	87	201	139	379	225	152	174	252	226	140	315	408	2.410
2013	349	425	498	444	525	483	352	260	215	192	128	156	1.272	4.027
2014	103	73	239	89	177	128	55	76	139	52	62	185	415	1.378
2015	79	148	199	196	125	175	131	154	122	134	300	269	426	2.032
2016	80	132	121	147	119	173	47	54	121	102	143	122	333	1.361
2017	100	59	81										240	240

Aylar / Months	10 Yıl Ort. / 10 Yrs Avr.	2017	%
1	108	100	-7
2	160	59	-63
3	204	81	-60
Total	472	240	-49

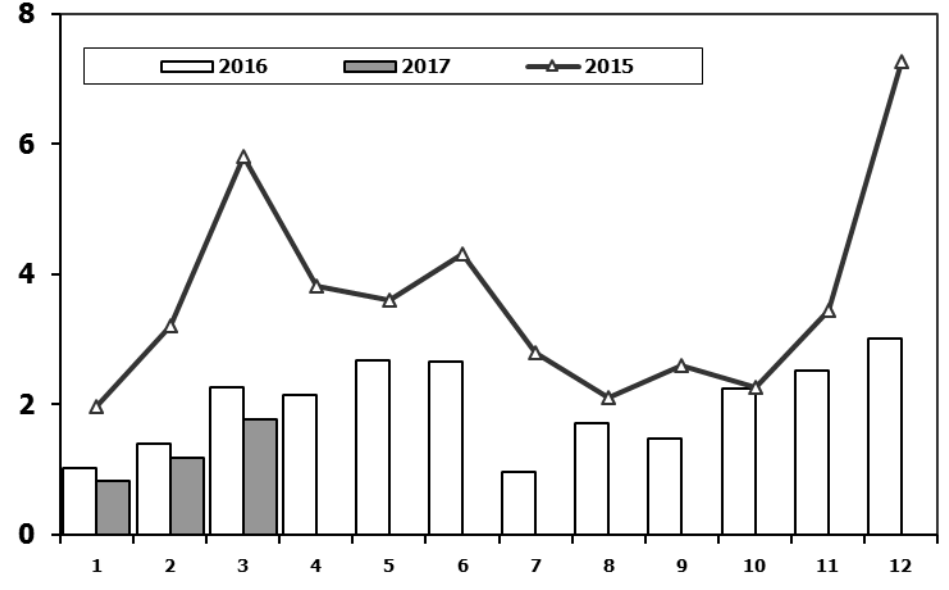
Ağır Ticari Araç Pazarının Analizi (x1000)

HCV Market Analysis (x1000)



Ağır Ticari Araç Pazarı (x1000)

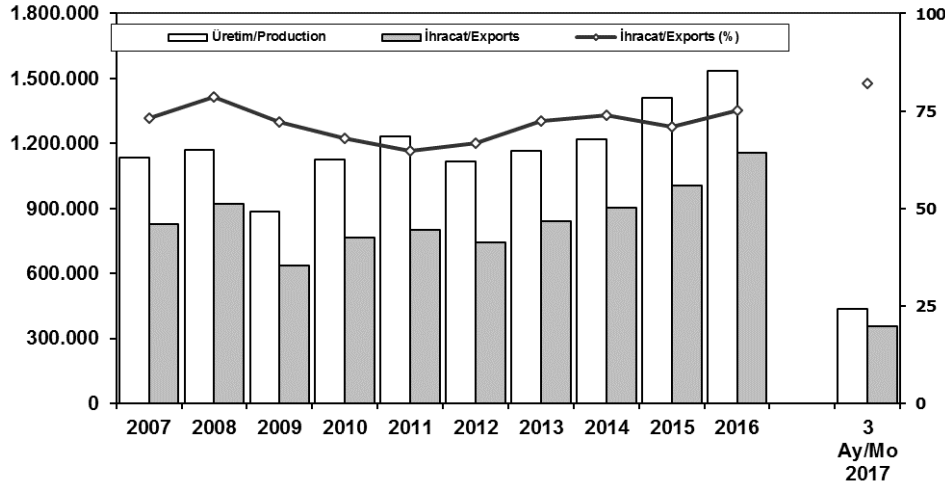
HCV Market (x1000)



Aylar / Months	10 Yil Ort. 10 Yrs Avr. (x1000)	2017 (x1000)	%
1	1,7	0,8	-50,7
2	2,3	1,2	-49,6
3	3,5	1,8	-48,6
Total	7,5	3,8	-49,4

	1	2	3	4	5	6	7	8	9	10	11	12	3 Ay/Mo	Total
2007	1.833	2.518	3.598	3.267	3.317	2.987	2.627	3.613	3.497	3.333	3.704	5.150	7.949	39.444
2008	2.265	2.870	3.165	3.266	3.029	3.069	2.536	2.922	2.897	2.263	1.899	2.340	8.300	32.521
2009	1.025	1.104	1.420	1.786	1.696	2.035	1.401	1.483	2.006	1.084	1.240	2.463	3.549	18.743
2010	955	1.141	2.059	2.133	2.251	2.494	2.373	2.881	2.787	3.376	3.444	6.365	4.155	32.259
2011	2.766	3.685	4.930	4.376	4.447	4.290	2.320	2.972	3.514	3.219	3.538	6.371	11.381	46.428
2012	1.674	2.503	4.073	3.065	3.957	3.714	2.818	2.700	3.568	2.739	3.335	5.713	8.250	39.859
2013	1.617	2.624	3.914	3.440	3.953	3.675	3.130	2.340	3.074	2.385	3.716	5.878	8.155	39.746
2014	1.555	2.287	3.383	3.461	3.788	3.789	2.299	2.640	3.649	2.686	3.316	6.952	7.225	39.805
2015	1.961	3.202	5.819	3.829	3.603	4.305	2.789	2.106	2.597	2.265	3.442	7.259	10.982	43.177
2016	1.027	1.398	2.266	2.154	2.672	2.663	972	1.713	1.475	2.251	2.530	3.016	4.691	24.137
2017	823	1.176	1.779										3.778	3.778

İhracat/Üretim (2007-2017) (Traktör dahil) Exports/Production (2007-2017) (Including F.Tractor)



Taşıt Araçları İhracatı (2015-2017) Motor Vehicle Exports (2015-2017)

SEKTÖR/SECTOR	2015	2016	2016	2017	2017/2016 (%)
			3 Ay-3 Mo		
OTOMOBİL / P.Cars	604.683	745.709	159.401	254.796	60
TİCARİ ARAÇLAR / CV	387.652	395.673	106.901	100.603	-6
* Kamyonet/Pick-Up	341.834	347.949	102.132	86.545	-15
* Minibüs/Minibus	38.255	34.790	2.132	10.835	408
* Kamyon/Truck	1.408	5.521	818	1.448	77
* Midibüs/Midibus	447	915	144	123	-15
* Otobüs/Bus	5.708	6.498	1.675	1.652	-1
TAŞIT ARAÇLARI /MV TOTAL	992.335	1.141.382	266.302	355.399	33
TRAKTÖR/F.TRACTOR	14.932	13.651	3.802	3.283	-14
TOTAL	1.007.267	1.155.033	270.104	358.682	33

Otomotiv Ana ve Yan Sanayii İhracatı (ABD \$) CBU and CKD Exports - \$

Sektör / Sector	2013	2014	2015	2016	2016	2017	2017/2016 (%)
					Ocak-Mart / January-March		
Yan Sanayi İhracatı/Total Component Exports	9.065.017.539	9.504.013.791	8.641.977.425	8.947.915.672	2.229.593.223	2.357.854.126	6%
İç ve Dış Lastik / Tyres	1.130.005.891,78	1.126.709.610,14	960.550.807	978.284.060	239.778.950	269.139.569	12%
Emniyet Camı / Safety Glasses	135.230.309,67	143.208.298,99	124.564.841	119.569.736	32.874.573	32.250.536	-2%
Motor (Engine)	319.294.885,46	171.893.752,32	221.897.271	370.561.589	78.415.297	116.284.061	48%
Akümülatör / Batteries	306.451.449,47	289.101.198,21	220.462.827	224.590.660	49.334.245	55.040.971	12%
Diğer Aksam ve Parça / Spare Parts&Components	7.174.035.002,35	7.773.100.931,83	7.114.501.679	7.254.909.627	1.829.190.158	1.885.138.988	3%
Ana Sanayi İhracatı/Total Vehicle Exports	12.491.591.365	13.259.499.977	12.977.346.859	15.302.074.705	3.427.009.078	4.726.857.536	38%
Otobüs / Bus	937.790.962,87	985.983.007,01	1.023.556.746	1.190.475.986	298.543.699	289.347.780	-3%
Midibüs-Minibüs / Minibus- Minibus	147.769.644,17	97.685.509,12	130.195.838	238.911.957	38.458.229	62.850.618	63%
Otomobil (P. Cars)	6.855.475.589,83	7.258.361.005,24	6.881.867.274	8.336.946.503	1.591.051.540	3.012.998.739	89%
Kamyon-Kamyonet/HCV-LCV	3.918.798.755,31	4.201.760.813,55	4.264.018.829	4.616.562.139	1.267.976.443	1.150.352.398	-9%
Römork ve Yarı Römork/Trailer-Semi Trailer	218.385.731,69	252.354.014,20	252.397.167	265.323.711	95.349.818	52.738.709	-45%
Çekici/Truck-Tractor	77.907.406,95	38.396.524,81	48.108.959	316.355.575	47.568.112	85.289.764	79%
Tarım Traktörü/Farm Tractor	335.463.274,61	424.959.103,39	377.202.046	337.498.834	88.061.237	73.279.529	-17%
Toplam/Total	21.556.608.904	22.763.513.769	21.619.324.284	24.249.990.377	5.656.602.300	7.084.711.662	25%

Kaynak: Uludağ İhracatçı Birlikleri . ÜİB tarafından OSD için özel olarak analiz edilen Otomotiv İhracatı kapsamında; ÜİB Türkiye Genel Otomotiv Endüstrisi sınıflandırmasına kıyasla "Römork ve Yan Römork", "Tarım Traktörü" verileri dahil edilmekte; "Kullanılmış Araçlar", "İki Tekerlekli Taşıtlar", "Demiryolu Taşıtları" hariç tutulmaktadır.

Source: Uludağ Exporters Association - Special Analyze for OSD

Compared to Turkish General Automotive Industry classification, this special analyze includes; farms tractors, trailers and semi-trailers, does not include; used vehicles, two-wheeled vehicles and railway vehicles.

Firma Bazında İhracat (Adet)
Export Of Member Companies (Unit)

Sektör Bazında İhracat (1000 \$)
Exports on Sectorial Basis

FİRMALAR Companies	2015	2016	Ocak-Mart 3 Months	
			2016	2017
			OYAK RENAULT	270.299
TOFAŞ	173.743	279.444	58.307	78.531
FORD OTOSAN	252.571	256.706	71.373	75.551
TOYOTA	81.962	109.184	16.365	65.548
HYUNDAI ASSAN	201.276	207.234	56.450	51.392
TÜRK TRAKTÖR	14.122	12.625	3.580	3.011
M. BENZ TÜRK	4.252	8.307	1.748	2.213
HONDA TÜRKİYE	2.220	2.914	675	1.760
MAN TÜRKİYE	1.493	1.717	532	519
HATTAT TARIM	810	1.026	222	272
KARSAN	3.067	3.629	443	234
OTOKAR	720	833	136	151
A.I.O.S.	291	673	65	127
TEMSA GLOBAL	441	653	90	96
GENEL TOPLAM	1.007.267	1.155.033	270.104	358.682

Kaynak: OSD

SEKTÖRLER (1.000 \$)	MART				OCAK - MART				SON 12 AYLIK			
	2016	2017	Değişim ('17/'16)	Pay(17)	2016	2017	Değişim ('17/'16)	Pay(17)	2016	2017	Değişim ('17/'16)	Pay(17)
Otomotiv Endüstrisi	2.046.659	2.712.809	32,5	19,9	5.542.094	7.011.763	26,5	18,9	21.492.016	25.357.381	18,0	17,5
Kimyevi Maddeler ve Mamulleri	1.189.671	1.531.794	28,8	11,2	3.324.403	4.112.775	23,7	11,1	15.005.291	14.727.232	-1,9	10,2
Hazırgiyim ve Konfeksiyon	1.509.702	1.537.523	1,8	11,3	4.244.667	4.076.705	-4,0	11,0	17.227.519	16.789.684	-2,5	11,6
Çelik	731.682	1.176.955	60,9	8,6	2.103.483	2.977.980	41,6	8,0	9.238.603	9.949.647	7,7	6,9
Elektrik Elektronik ve Hizmet	897.845	913.576	1,8	6,7	2.327.992	2.220.164	-4,6	6,0	10.390.531	9.865.375	-5,1	6,8
Tekstil ve Hammaddeleri	703.269	759.041	7,9	5,6	1.932.520	2.012.192	4,1	5,4	7.945.771	7.947.413	0,0	5,5
Hububat, Bakliyat, Yağlı Tohumlar ve Mamulleri	569.483	624.627	9,7	4,6	1.592.344	1.705.872	7,1	4,6	6.106.604	6.472.773	6,0	4,5
Demir ve Demir Dışı Metaller	536.208	613.866	14,5	4,5	1.462.368	1.582.489	8,2	4,3	6.200.940	6.066.247	-2,2	4,2
Makine ve Aksamları	469.290	519.192	10,6	3,8	1.284.676	1.344.045	4,6	3,6	5.460.988	5.362.793	-1,8	3,7
Mobilya, Kağıt ve Orman Ürünleri	369.384	391.946	6,1	2,9	986.821	1.036.310	5,0	2,8	3.968.755	4.150.741	4,6	2,9
TOPLAM	11.440.823	13.616.061	19,0	100,0	34.671.927	37.003.060	6,7	100,0	141.457.261	144.877.078	2,4	100,0

Kaynak: TİM

Mart ayı ihracat verilerine, "İhracatçı Birlikleri Kaydından Muaf İhracat" verisi dahil değildir.

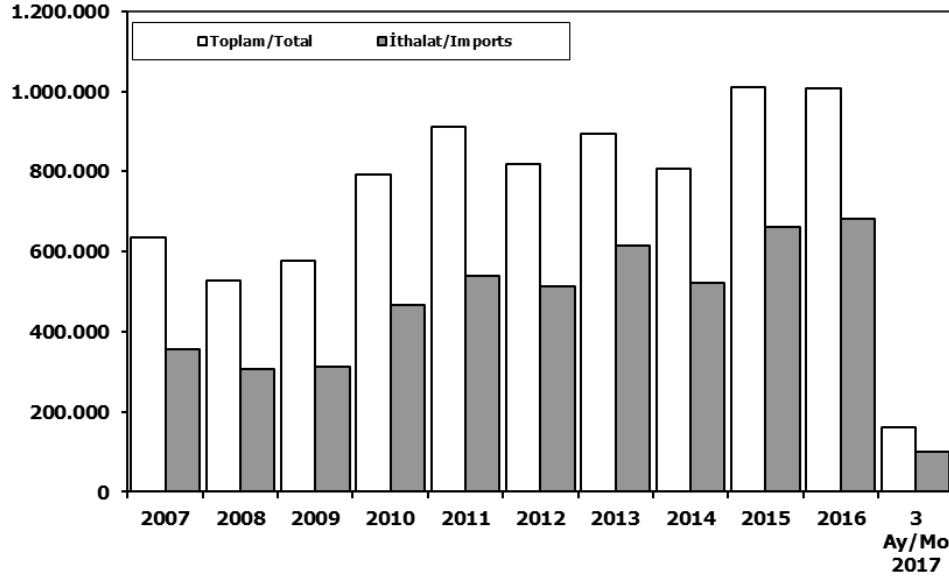
Source: TİM

Exportation data for March does not include "Exempted Exports from the Exporters' Union Registration".

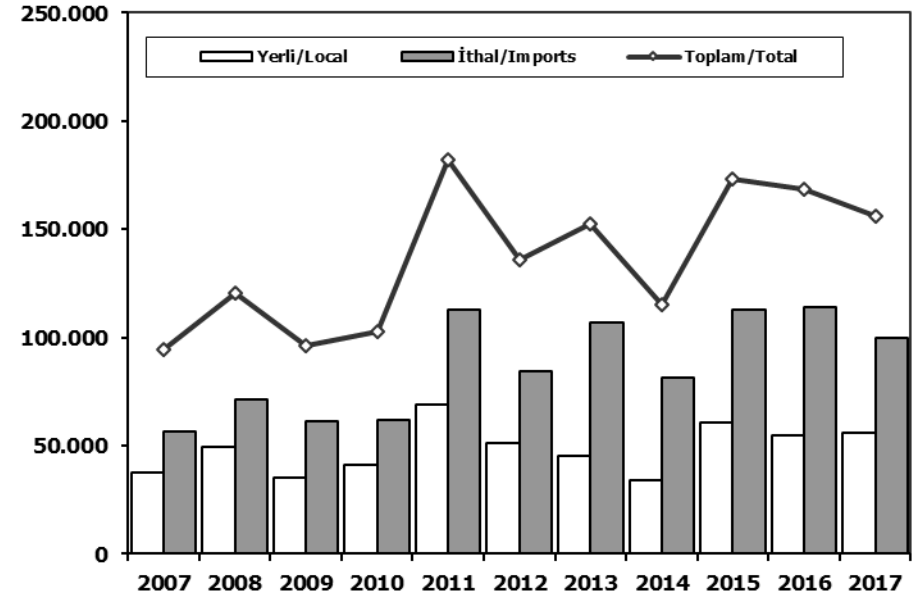
First 3 Sectors:

- 1- Automotive Industry
- 2-Chemical Articles and Products
- 3- Ready Wear and Confection

Toplam Pazar (Otomobil+T.Araç) Total Market (P.Cars+C.V)



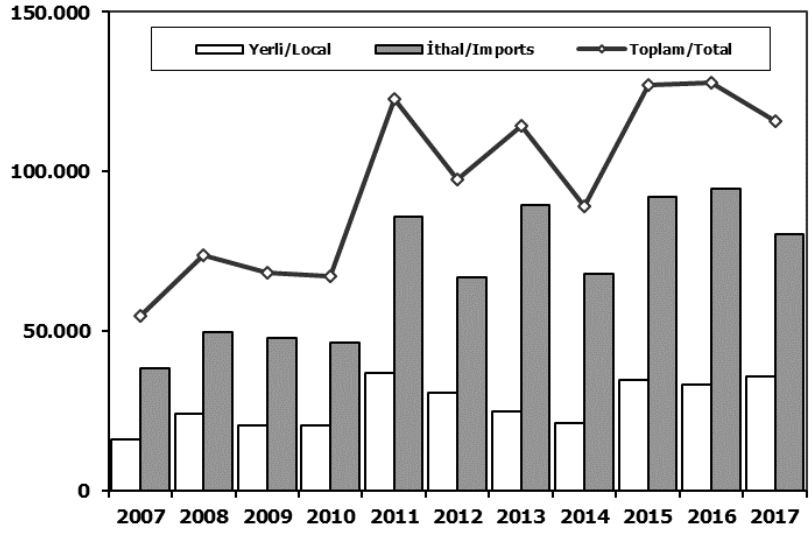
Hafif Araçlar Pazarı (2007-2017 Ocak-Mart) LV Market (2007-2017 January-March)



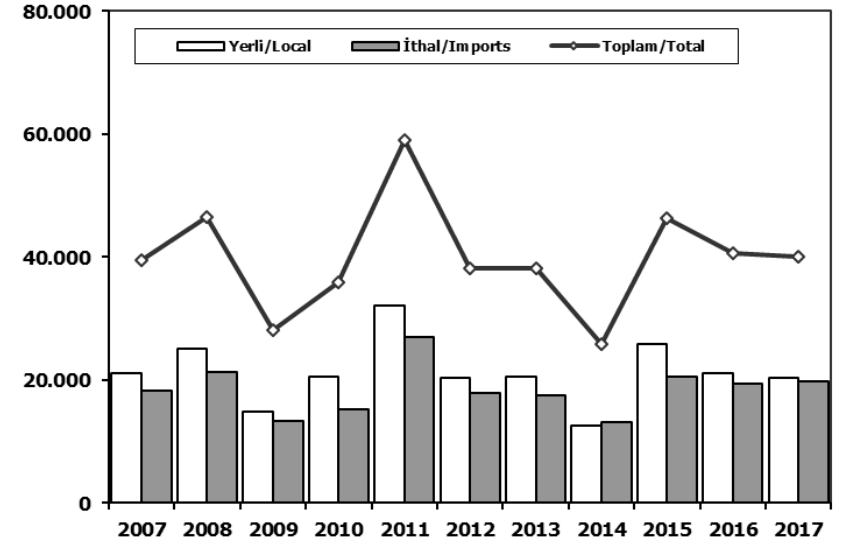
	2007	2008	2009	2010	2011	2012	2013	2014	2015	2016	3 Ay/Mo 2016	3 Ay/Mo 2017
Toplam/Total	634.206	526.544	575.869	793.172	910.867	817.620	893.124	807.486	1.011.194	1.007.857	173.177	159.868
İthalat/Imports	355.752	306.087	313.921	465.408	538.532	511.694	615.609	522.842	660.045	681.308	116.279	101.308
İthalat/Imports (%)	56	58	55	59	59	63	69	65	65	68	67	63

	2007	2008	2009	2010	2011	2012	2013	2014	2015	2016	2017
Yerli/Local	37.454	49.297	35.241	41.107	69.196	51.098	45.477	34.026	60.533	54.494	56.019
İthal/Imports	56.737	71.130	61.218	61.929	112.762	84.655	107.127	81.246	112.715	113.992	100.071
Toplam/Total	94.191	120.427	96.459	103.036	181.958	135.753	152.604	115.272	173.248	168.486	156.090
İthalat/Imports (%)	60	59	63	60	62	62	70	70	65	68	64

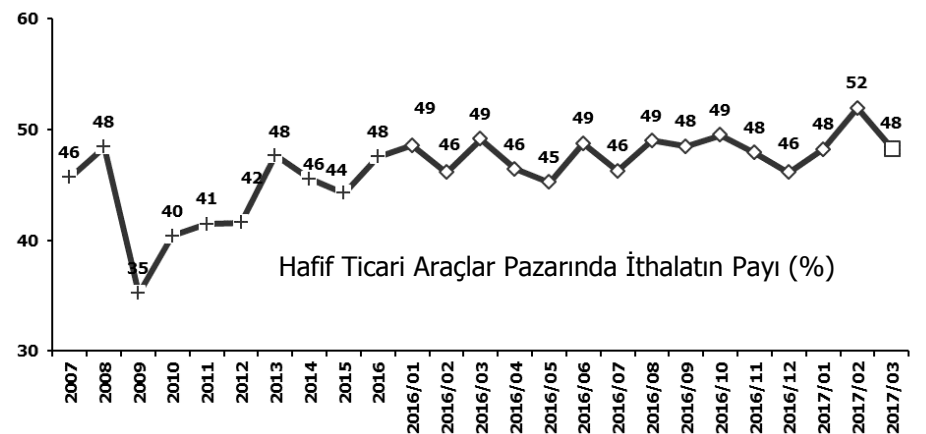
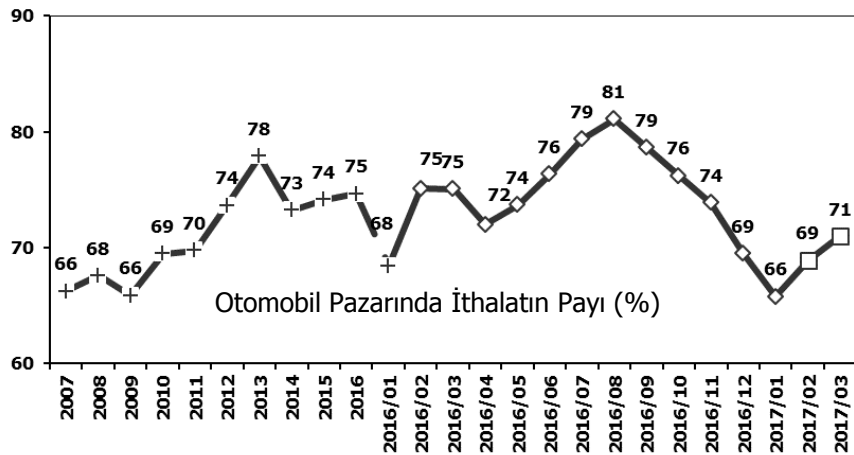
Otomobil Pazarı (2007-2017 Ocak-Mart) P.Cars Market (2007-2017 January-March)



Hafif Ticari Araçlar Pazarı (2007-2017 Ocak-Mart) Light Commercial Vehicle Market (2007-2017 January-March)

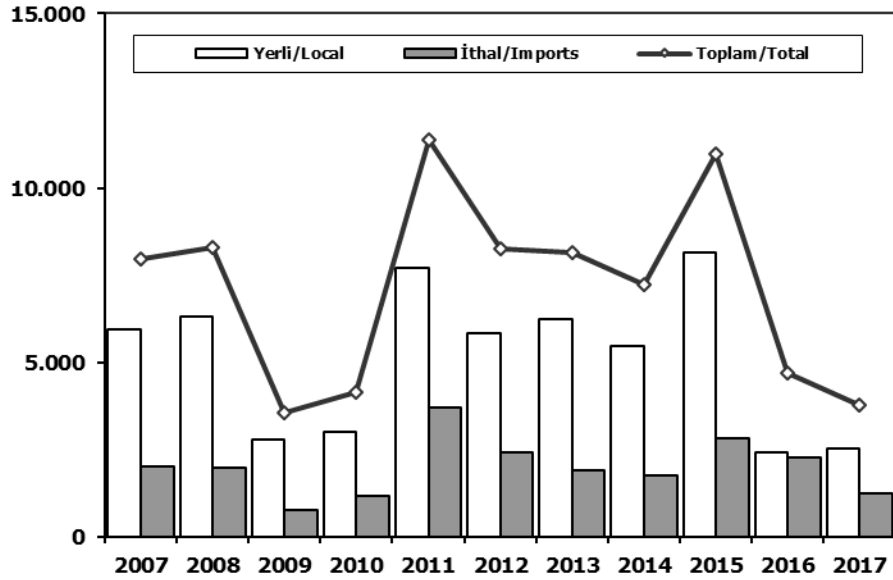


	2007	2008	2009	2010	2011	2012	2013	2014	2015	2016	2017		2007	2008	2009	2010	2011	2012	2013	2014	2015	2016	2017
Yerli/Local	16.278	24.175	20.361	20.614	37.090	30.704	24.846	21.342	34.745	33.436	35.720	Yerli/Local	21.176	25.122	14.880	20.493	32.106	20.394	20.631	12.684	25.788	21.058	20.299
İthal/Imports	38.456	49.756	47.926	46.589	85.805	66.832	89.588	68.005	92.246	94.485	80.243	İthal/Imports	18.281	21.374	13.292	15.340	26.957	17.823	17.539	13.241	20.469	19.507	19.828
Toplam/Total	54.734	73.931	68.287	67.203	122.895	97.536	114.434	89.347	126.991	127.921	115.963	Toplam/Total	39.457	46.496	28.172	35.833	59.063	38.217	38.170	25.925	46.257	40.565	40.127
İthalat/Imports (%)	70	67	70	69	70	69	78	76	73	74	69	İthalat/Imports (%)	46	46	47	43	46	47	46	51	44	48	49



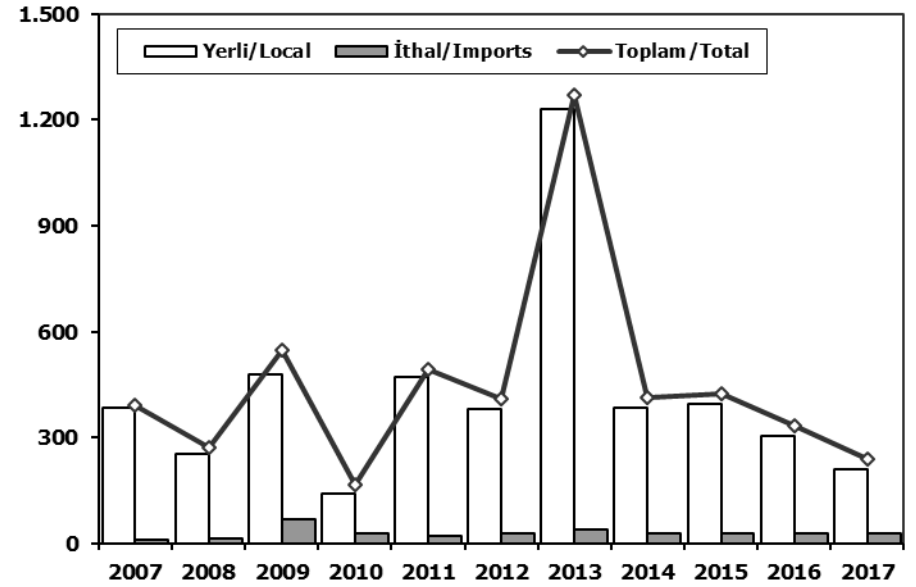
Ağır Ticari Araçlar Pazarı (2007-2017 Ocak-Mart)

HCV Market (2007-2017 January-March)



Otobüs Pazarı (2007-2017 Ocak-Mart)

Bus Market (2007-2017 January-March)

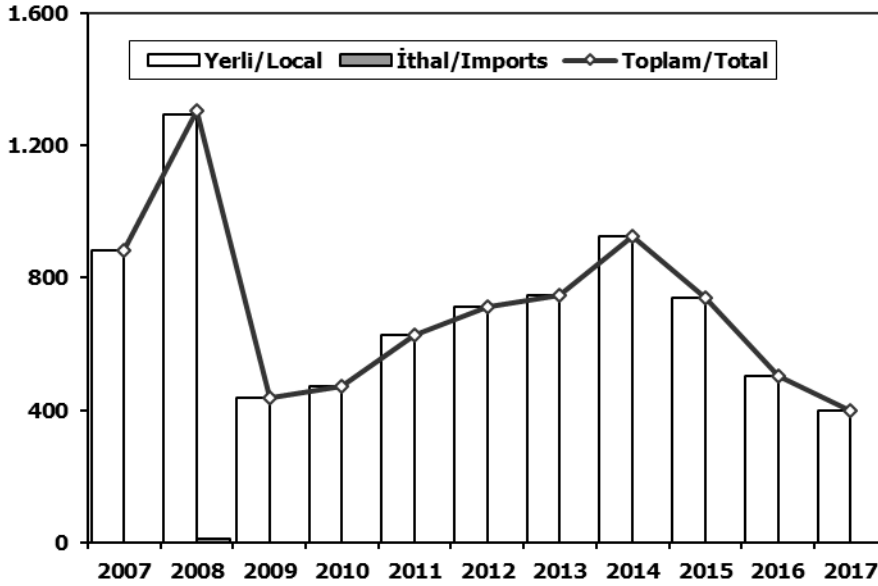


	2007	2008	2009	2010	2011	2012	2013	2014	2015	2016	2017
Yerli/Local	5.943	6.309	2.798	2.987	7.693	5.831	6.239	5.466	8.157	2.404	2.541
İthal/Imports	2.006	1.991	751	1.168	3.688	2.419	1.916	1.759	2.825	2.287	1.237
Toplam/Total	7.949	8.300	3.549	4.155	11.381	8.250	8.155	7.225	10.982	4.691	3.778
İthalat/Imports (%)	25	24	21	28	32	29	23	24	26	49	33

	2007	2008	2009	2010	2011	2012	2013	2014	2015	2016	2017
Yerli/Local	383	255	480	140	471	379	1.232	385	396	303	210
İthal/Imports	9	15	67	27	21	29	40	30	30	30	30
Toplam/Total	392	270	547	167	492	408	1.272	415	426	333	240
İthalat/Imports (%)	2	6	12	16	4	7	3	7	7	9	13

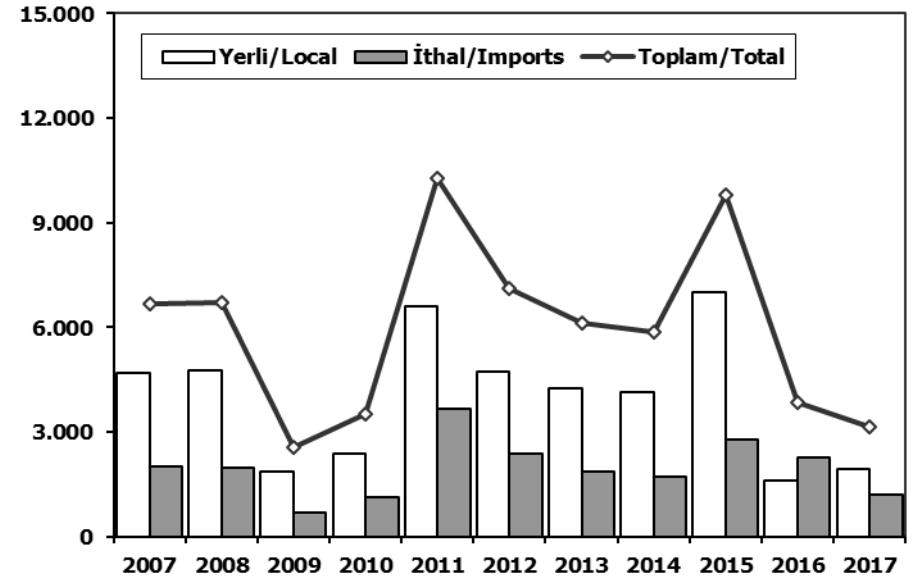
Midibüs Pazarı (2007-2017 Ocak-Mart) (7-9 mt / 25-35 Kişilik)

Midibus Market (2007-2017 January-March) (7-9 mt / 25-35 Passengers)



Kamyon Pazarı (2007-2017 Ocak-Mart)

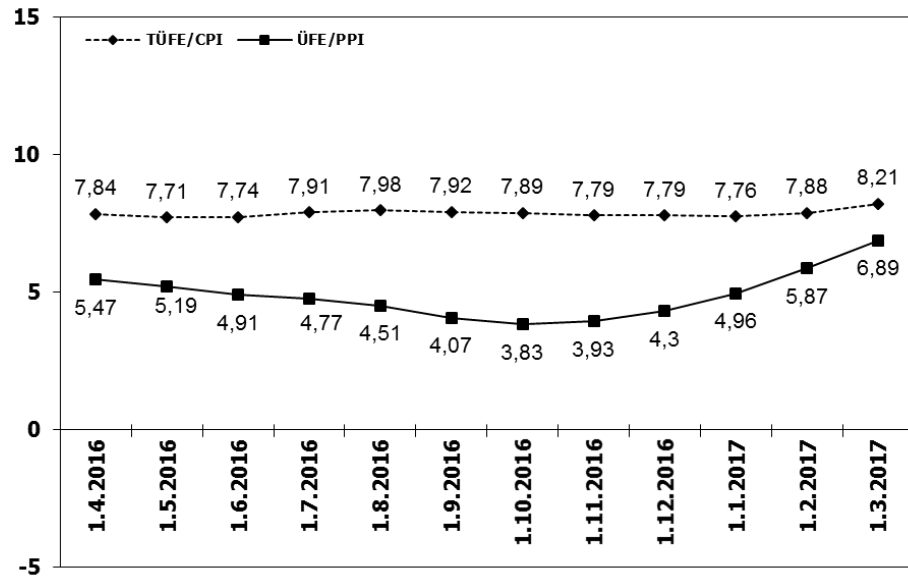
Truck Market (2007-2017 January-March)



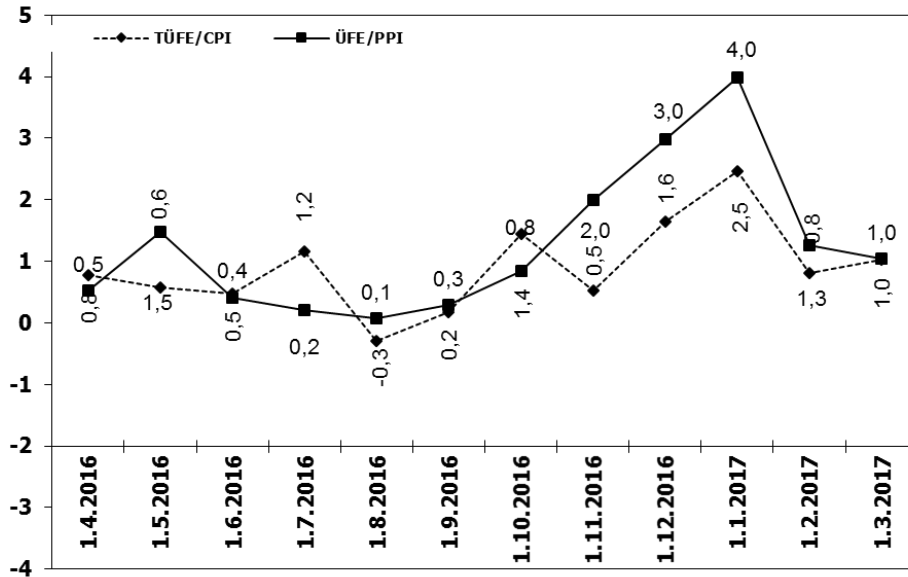
	2007	2008	2009	2010	2011	2012	2013	2014	2015	2016	2017
Yerli/Local	883	1.294	438	471	627	713	748	926	740	502	397
İthal/Imports	0	9	0	0	0	0	0	0	0	0	0
Toplam/Total	883	1.303	438	471	627	713	748	926	740	502	397
İthalat/Imports (%)	0	1	0	0	0	0	0	0	0	0	0

	2007	2008	2009	2010	2011	2012	2013	2014	2015	2016	2017
Yerli/Local	4.677	4.760	1.880	2.376	6.595	4.739	4.259	4.155	7.021	1.599	1.934
İthal/Imports	1.997	1.967	684	1.141	3.667	2.390	1.876	1.729	2.795	2.257	1.207
Toplam/Total	6.674	6.727	2.564	3.517	10.262	7.129	6.135	5.884	9.816	3.856	3.141
İthalat/Imports (%)	30	29	27	32	36	34	31	29	28	59	38

TÜFE ve ÜFE'nin 12 Aylık Ort. Değişimi (%) CPI and PPI 12 Months Avr. Changes (%)



TÜFE ve ÜFE'nin Aylık Değişimi (%) CPI and PPI Monthly Changes (%)



2017 Yılı İthal Hafif Araç Satışları 2017 Light Vehicles Import Sales

2017 YILI İTHAL OTOMOBİL SATIŞLARI / P.Cars Import 2017

	2016 TOPLAMI 2016 Total	1	2	3	4	5	6	7	8	9	10	11	12	2017 TOPLAMI 2017 Total
VOLKSWAGEN	101.761	3.059	4.903	6.729										14.691
DACIA	42.109	1.471	2.303	3.534										7.308
OPEL	55.471	1.577	1.652	4.014										7.243
HYUNDAI	26.463	1.413	1.393	2.563										5.369
NISSAN	30.513	1.154	1.519	2.083										4.756
PEUGEOT	25.440	637	1.884	2.139										4.660
FORD	33.453	1.175	1.199	2.760										5.134
RENAULT	42.422	844	1.462	3.148										5.454
SKODA	28.876	925	1.225	1.335										3.485
MERCEDES-BENZ	32.666	499	1.078	2.308										3.885
BMW	27.166	570	900	1.346										2.816
AUDI	22.005	625	702	1.287										2.614
CITROEN	17.041	515	761	1.765										3.041
SEAT	20.637	536	623	1.103										2.262
KIA	14.398	426	481	630										1.537
TOYOTA	11.513	439	413	439										1.291
HONDA	8.714	206	255	642										1.103
VOLVO	4.100	155	213	232										600
FIAT	3.103	106	187	229										522
SUZUKI	3.931	79	143	260										482
JEEP	2.192	111	104	162										377
MINI	1.688	55	81	82										218
MAZDA	1.427	54	76	109										239
PORSCHE	827	66	61	61										188
SUBARU	1.584	67	40	195										302
LAND ROVER	2.108	34	72	104										210
MITSUBISHI	709	28	43	50										121
ALFA ROMEO	634	17	43	59										119
SSANGYONG	507	10	20	32										62
LEXUS	64	16	3	6										25
INFINITI	120	6	12	8										26
JAGUAR	481	6	10	23										39
DS	400	9	0	1										10
SMART	192	2	7	20										29
MASERATI	72	2	7	3										12
ASTON MARTIN	29	1	2	3										6
BENTLEY	9	1	2	0										3
FERRARI	18	0	1	3										4
CHERY	144	0	0	0										0
PROTON	51	0	0	0										0
LAMBORGHINI	7	0	0	0										0
TATA	0	0	0	0										0
GEELY	0	0	0	0										0
LANCIA	0	0	0	0										0
TOPLAM	565.045	16.896	23.880	39.467	0	0	0	0	0	0	0	0	0	80.243

2017 YILI İTHAL HAFIF TİCARİ ARAÇ SATIŞLARI / Light Commercial Vehicles Import 2017

	2016 TOPLAMI 2016 Total	1	2	3	4	5	6	7	8	9	10	11	12	2017 TOPLAMI 2017 Total
VOLKSWAGEN	32.772	1.255	1.599	2.121										4.975
RENAULT	15.091	519	718	1.327										2.564
CITROEN	6.884	438	669	424										1.531
MERCEDES-BENZ	8.070	343	496	687										1.526
TOYOTA	5.649	356	451	489										1.296
FIAT	5.889	257	448	490										1.195
DACIA	5.422	235	348	523										1.106
FORD	4.878	250	270	371										891
PEUGEOT	8.402	157	351	990										1.498
KIA	3.952	193	240	384										817
NISSAN	1.540	167	266	337										770
MITSUBISHI	3.533	173	213	127										513
HYUNDAI	2.244	134	174	242										550
IVECO	2.175	146	133	250										529
SUZU	1.059	12	12	9										33
SSANGYONG	254	9	4	21										34
TATA	9	0	0	0										0
TOPLAM	107.811	4.644	6.392	8.792	0	0	0	0	0	0	0	0	0	19.828