



OTOMOTİV SANAYİİ DERNEĞİ
AUTOMOTIVE MANUFACTURERS ASSOCIATION

AYLIK RAPOR

Automotive Industry Monthly Report

Kasım / November 2016

- **Üretim/Production**
- **Satış/Sales**
- **İthalat/Imports**
- **İhracat/Exports**

OSD "OICA" Üyesidir



OSD is a Member of "OICA"

2016 Kasım Ayı Özeti / 2016 November Summary

KONULAR/MATTERS		KASIM / NOVEMBER			11 AY/ 11 MONTHS			SON 12 AYLIK / YoY		
		2015	2016	2016/2015 (%)	2015	2016	2016/2015 (%)	2015	2016	2016/2015 (%)
Üretim/Production	Toplam/Total	126.236	150.681	19	1.233.044	1.329.812	8	1.353.637	1.455.554	8
	Otomobil/P.Cars	72.872	104.737	44	716.339	843.925	18	786.819	918.564	17
Pazar/Market	Toplam/Total	88.043	124.835	42	847.762	862.928	2	1.001.703	1.026.360	2
	Otomobil/P.Cars	62.397	95.783	54	611.256	648.894	6	721.310	763.234	6
İthalat/Import	Toplam/Total	58.114	84.284	45	560.209	589.321	5	653.543	688.899	5
	Otomobil/P.Cars	47.658	70.738	48	458.086	489.980	7	535.254	570.706	7
İhracat/Export	Toplam/Total	93.187	117.042	26	900.052	1.022.480	14	982.360	1.114.763	13
	Otomobil/P.Cars	57.183	83.635	46	544.561	658.602	21	596.921	718.724	20
İhracat / Export (\$)	Toplam/Total **	1.975.804.188	2.293.179.481	16	19.747.235.357	21.897.832.331	11	20.799.931.569	23.051.860.172	11
	Otomobil/P.Cars	632.050.446	950.971.854	50	6.264.270.862	7.250.448.979	16	6.435.490.776	7.584.378.563	18
PARAMETRELER / PARAMETERS		KASIM / NOVEMBER			11 AY/ 11 MONTHS			SON 12 AYLIK / YoY		
		2015	2016	2016/2015 (%)	2015	2016	2016/2015 (%)	2015	2016	2016/2015 (%)
ÜFE/PPI		-1,42	2,00	**	6,06	6,76	**	5,33	3,93	**
TÜFE/CPI		0,67	0,52	**	8,58	6,78	**	7,61	7,79	**
Sanayi Endeksi/Industry Index		-1,26	2,41	**	6,66	8,53	**	6,06	5,08	**
\$ (*)		2,8552	3,2555	14	2,7155	2,9620	9	2,6830	2,9571	10
EURO (*)		3,0825	3,5187	14	3,0085	3,2856	9	2,9932	3,2719	9
Japon Yeni (*)		2,3315	2,9708	27	2,2320	2,7209	22	2,2072	2,6919	22

(*) Ortalama Değerler / Average Values

(**) Toplam Sanayi / Total Industry Including Components

*Raporda yer alan üretim adetleri yalnızca OSD üyelerinin verilerini göstermektedir.
Production units in this report only show the data of OSD members.*

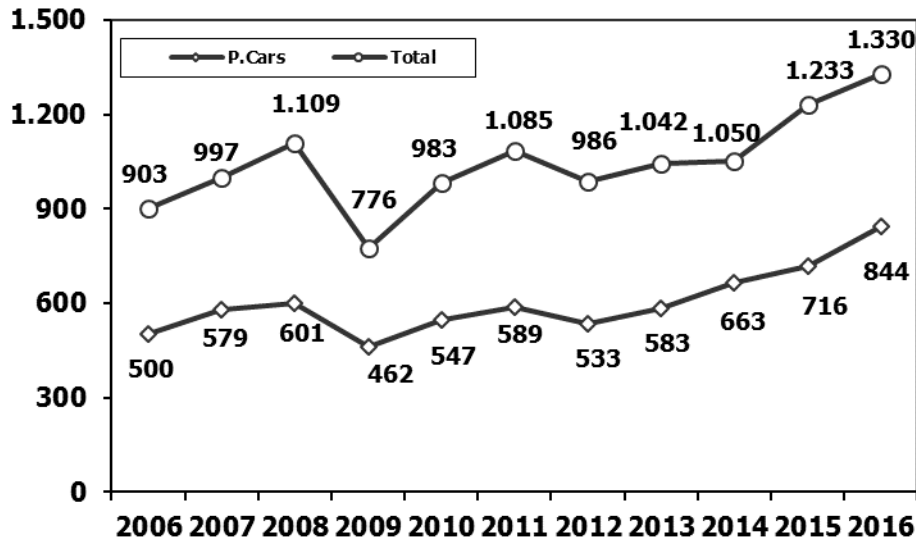
2015/2016 Yılları Üretim 2015/2016 Production

K.KAMYON : AYA 3.5-12 Ton (L.Truck:GVW 3.5-12 Ton)

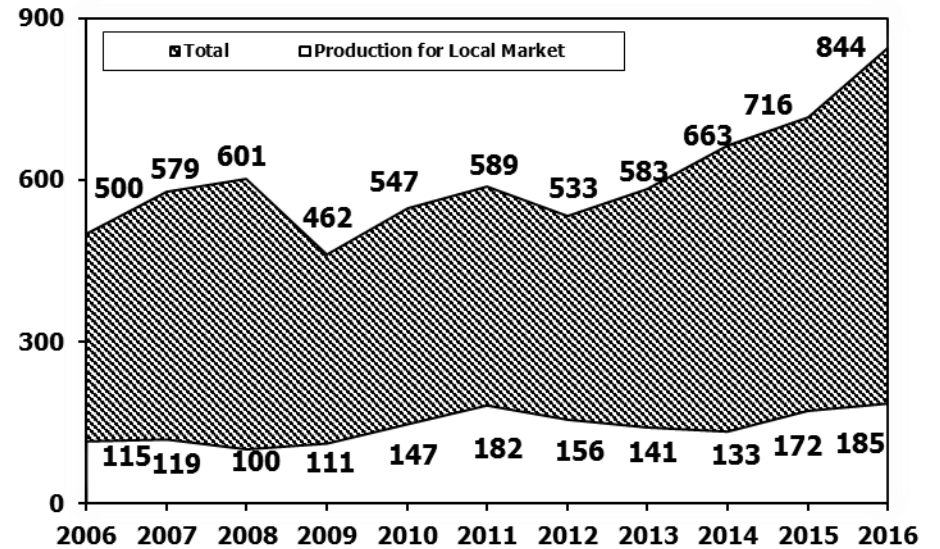
B.KAMYON : AYA 12 Ton'dan Büyük (M.Truck:GVW 12 Ton And Up)

TİPLER	KASIM AYI ÜRETİMİ November Production		11 AYLIK ÜRETİM 11 Months Production		DEĞİŞİM % Percent Change %	
	2015	2016	2015	2016	KASIM November	11 AY 11 Months
OTOMOBİL - Pass.Car	72.872	104.737	716.339	843.925	44	18
TİCARİ ARAÇLAR - Commercial Vehicles	53.364	45.944	516.705	485.887	-14	-6
* B. KAMYON - M. Truck	2.200	1.247	27.901	13.923	-43	-50
* K. KAMYON - L. Truck	507	278	3.924	2.272	-45	-42
* KAMYONET - Pick Up	47.443	38.732	425.757	418.834	-18	-2
* OTOBÜS - Bus	854	679	7.868	7.588	-20	-4
* MİNİBÜS - Minibus	1.689	4.770	45.065	40.176	182	-11
* MİDİBÜS - Midibus	671	238	6.190	3.094	-65	-50
TAŞIT ARAÇLARI TOPLAM - MV Total	126.236	150.681	1.233.044	1.329.812	19	8
TRAKTÖR - F.Tractor	4.276	4.319	47.827	47.266	1	-1
GENEL TOPLAM - Grand Total	130.512	155.000	1.280.871	1.377.078	19	8

Toplam Üretim ve Otomobil Üretimi (x1000) (Ocak-Kasım)
Total & P.Cars Production (x1000) (January-November)

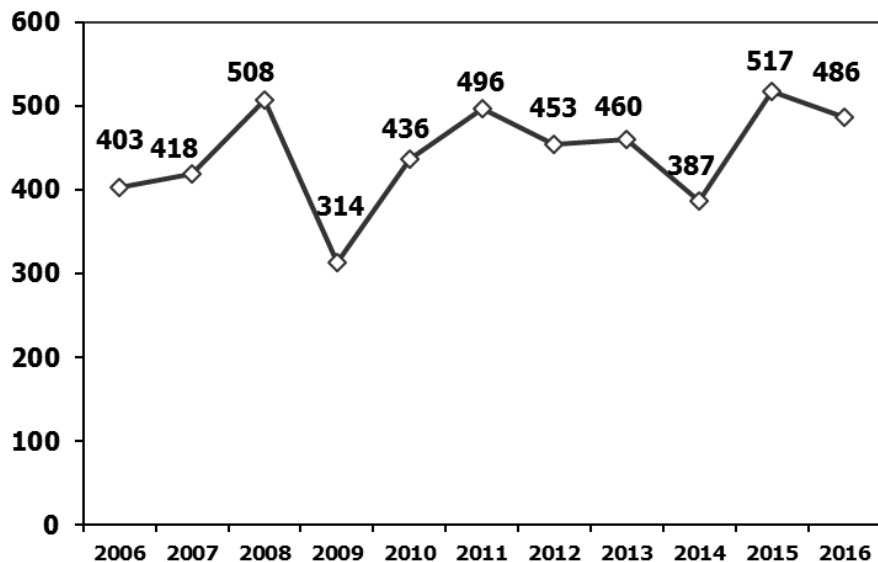


Otomobil Üretimi ve İhracat (x1000) (Ocak-Kasım)
P.Cars Production & Exports (x1000) (January-November)



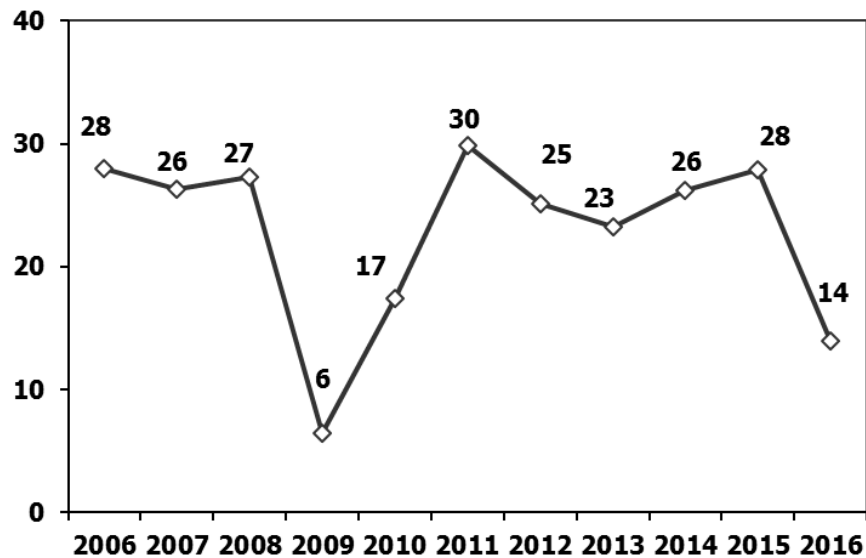
Ticari Araç Üretimi (x1000) (Ocak-Kasım)

Commercial Vehicle Production (x1000) (January-November)



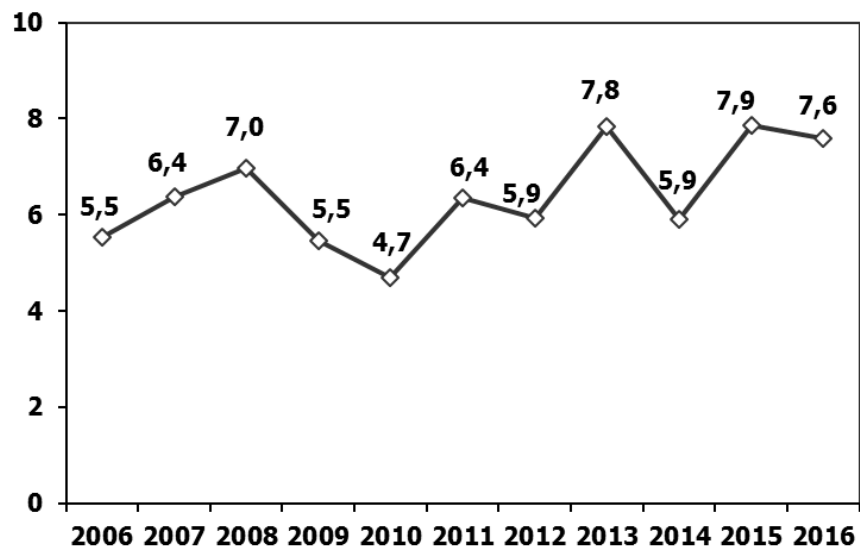
(AYA >12 Ton) Büyük Kamyon Üretimi (x1000) (Ocak-Kasım)

(GVW >12 Ton) Heavy Truck Production (x1000) (January-November)



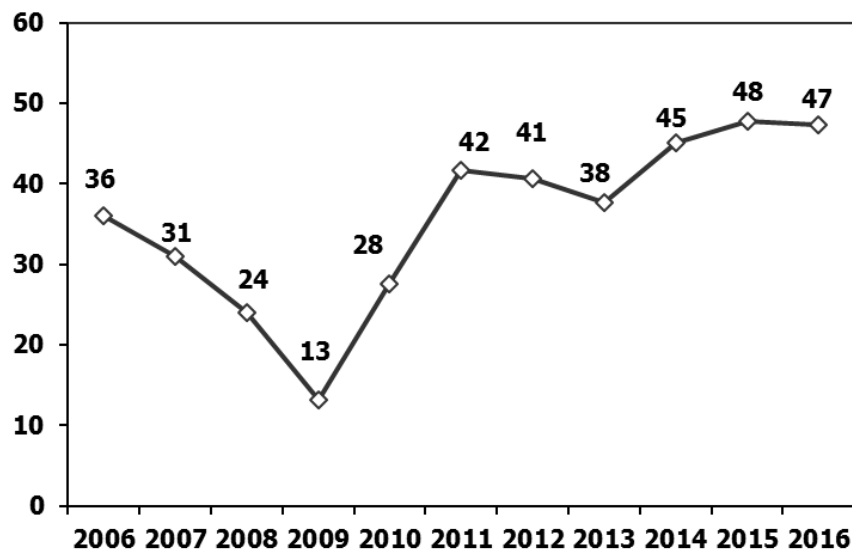
Otobüs Üretimi (x1000) (Ocak-Kasım)

Bus Production (x1000) (January-November)



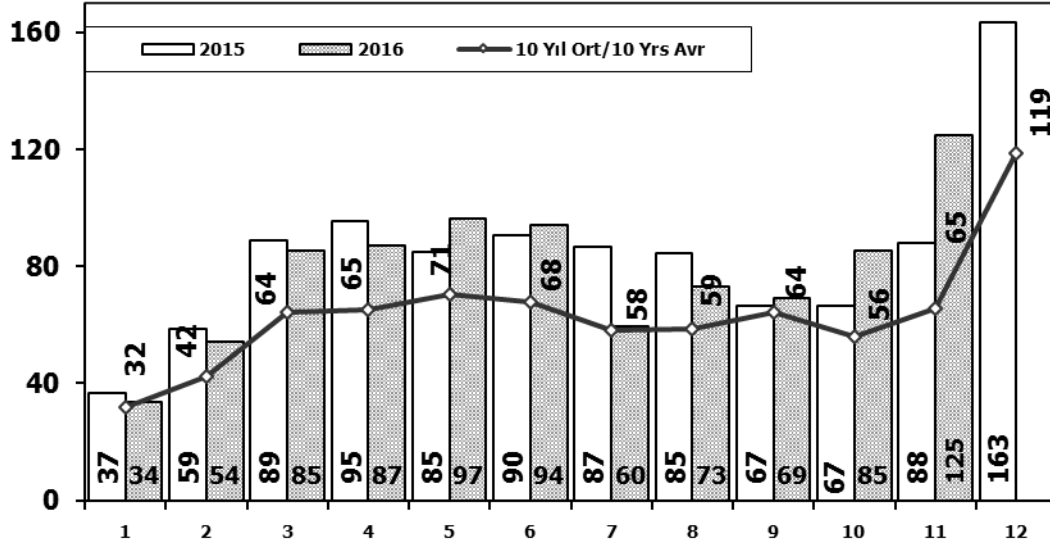
Traktör Üretimi (x1000) (Ocak-Kasım)

F. Tractor Production (x1000) (January-November)



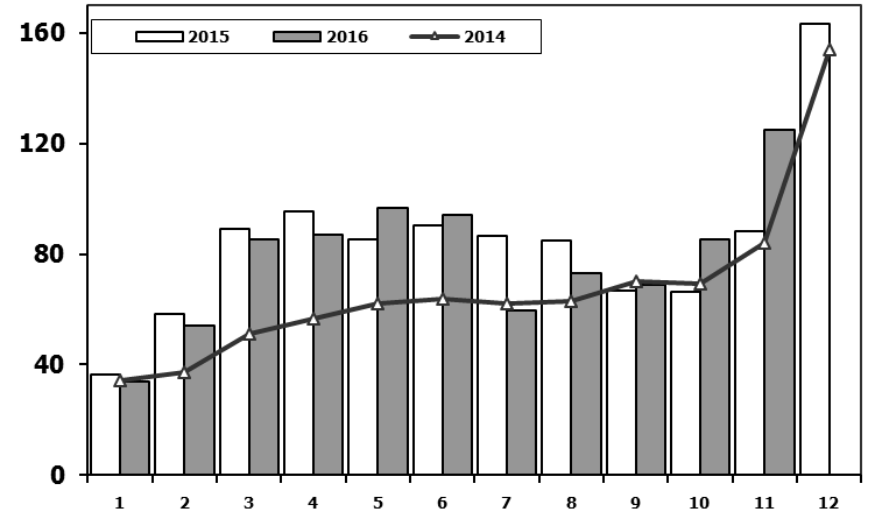
Toplam Pazarın Analizi (x1000)

Total Market Analysis (x1000)



Toplam Pazar (x1000)

Total Market (x1000)

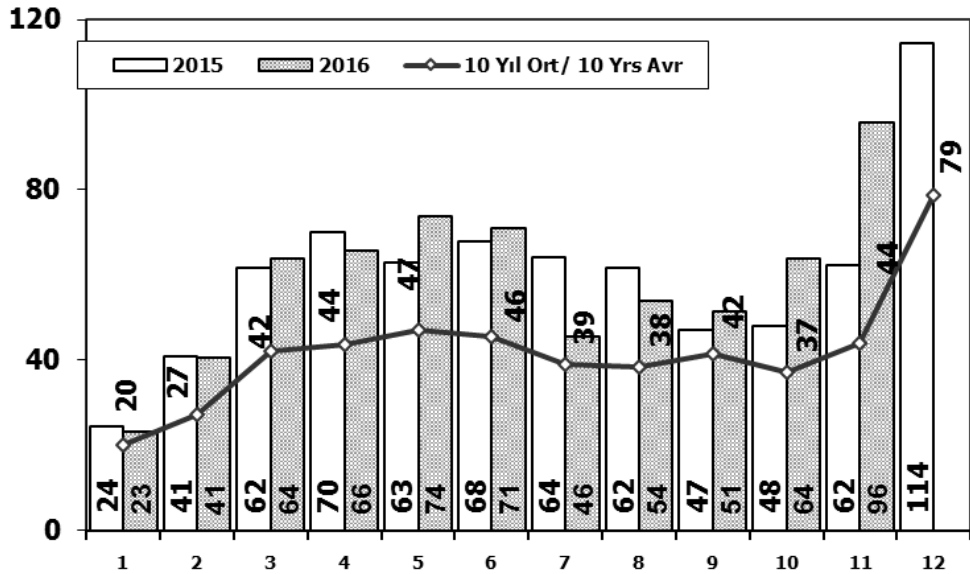


Aylar/ Months	10 Yil Ort. 10 Yrs Avr. (x1000)	2016 (x1000)	%
1	31,7	33,7	6,4
2	42,3	54,2	28,3
3	64,3	85,2	32,6
4	65,4	87,0	33,0
5	70,5	96,6	37,0
6	67,9	94,2	38,8
7	58,3	59,5	2,1
8	58,7	73,3	24,8
9	64,1	69,1	7,7
10	56,1	85,3	51,9
11	65,5	124,8	90,6
Total	644,8	862,9	33,8

	1	2	3	4	5	6	7	8	9	10	11	12	11 Ay/Mo	Total
2006	29.969	44.646	65.090	68.853	83.289	58.203	40.037	47.374	49.629	39.805	55.898	82.722	582.793	665.515
2007	24.950	31.702	45.488	45.633	51.255	51.661	50.117	54.171	50.078	56.058	67.017	106.076	528.130	634.206
2008	33.792	38.121	56.814	50.967	51.627	49.393	44.692	46.592	46.829	35.147	28.152	44.418	482.126	526.544
2009	20.631	22.846	56.531	54.426	64.887	63.102	30.246	37.092	83.403	22.117	29.202	91.386	484.483	575.869
2010	21.050	32.313	53.828	57.079	61.628	63.390	63.718	64.645	66.601	76.780	77.406	154.734	638.438	793.172
2011	47.658	62.348	83.333	82.071	85.093	85.863	65.364	61.378	63.643	72.640	67.195	134.281	776.586	910.867
2012	31.219	43.827	68.957	66.014	74.820	74.781	65.122	60.848	73.197	62.677	75.045	121.113	696.507	817.620
2013	37.140	50.931	72.688	77.015	85.421	77.771	74.726	67.383	71.037	60.399	83.017	135.596	757.528	893.124
2014	34.225	37.308	50.964	56.766	61.909	63.952	62.206	62.839	70.180	69.259	83.937	153.941	653.545	807.486
2015	36.576	58.533	89.121	95.431	85.145	90.463	86.625	84.683	66.622	66.520	88.043	163.432	847.762	1.011.194
2016	33.740	54.223	85.214	87.041	96.576	94.203	59.505	73.269	69.071	85.251	124.835		862.928	862.928

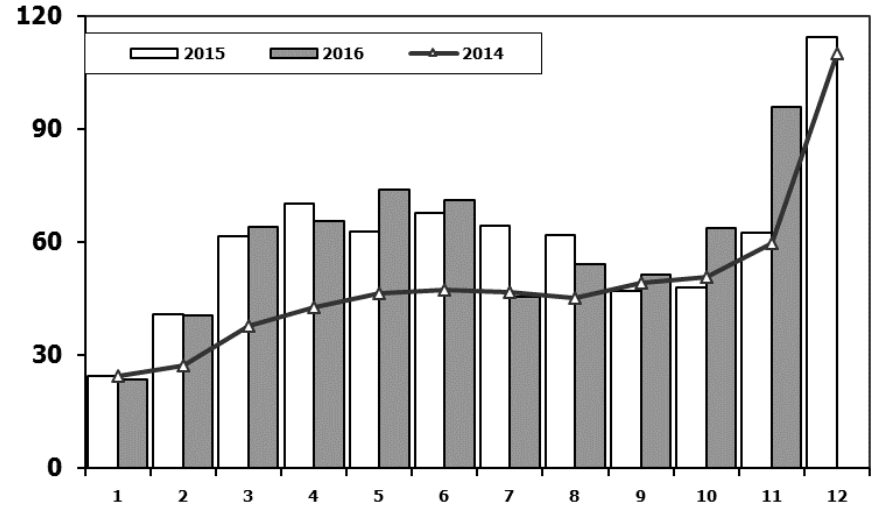
Otomobil Pazarının Analizi (x1000)

P.Cars Market Analysis (x1000)



Otomobil Pazarı (x1000)

P.Cars Market (x1000)

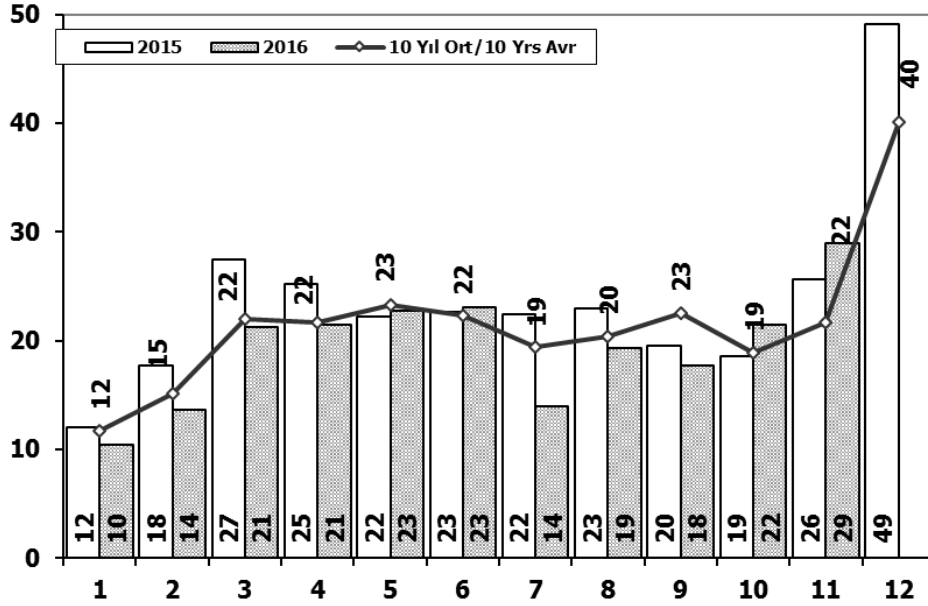


Aylar / Months	10 Yil Ort. 10 Yrs Avr. (x1000)	2016 (x1000)	%
1	20,0	23,4	17,0
2	27,1	40,6	49,5
3	42,3	64,0	51,4
4	43,8	65,6	49,8
5	47,2	73,8	56,4
6	45,6	71,1	56,0
7	38,9	45,6	17,1
8	38,3	54,0	41,0
9	41,5	51,3	23,6
10	37,2	63,7	71,4
11	43,9	95,8	118,4
Total	425,8	648,9	52,4

	1	2	3	4	5	6	7	8	9	10	11	12	11 Ay/Mo	Total
2006	16.506	24.929	36.996	40.177	48.521	32.982	22.653	24.873	27.517	21.237	30.477	46.351	326.868	373.219
2007	13.186	17.212	24.336	25.204	29.067	30.126	28.246	28.469	27.662	32.569	39.643	61.745	295.720	357.465
2008	18.588	21.196	34.147	30.313	31.477	28.724	25.530	26.102	27.053	19.788	17.201	25.879	280.119	305.998
2009	13.173	14.492	40.622	36.202	44.188	41.019	16.637	22.537	52.162	13.828	17.781	57.178	312.641	369.819
2010	12.594	20.651	33.958	36.549	40.467	42.086	41.399	42.222	42.477	47.859	50.061	99.461	410.323	509.784
2011	29.868	39.004	54.023	53.835	56.302	56.714	43.518	38.875	39.964	47.508	44.951	88.957	504.562	593.519
2012	21.077	29.189	47.270	45.645	50.460	50.849	44.531	41.236	49.360	43.440	52.297	80.926	475.354	556.280
2013	25.835	36.814	51.785	56.999	62.383	58.290	55.712	51.611	52.925	46.985	64.117	101.199	563.456	664.655
2014	24.368	27.167	37.812	42.769	46.379	47.278	46.602	45.131	49.262	50.814	59.695	110.054	477.277	587.331
2015	24.498	40.817	61.676	70.211	62.878	67.766	64.218	61.753	47.088	47.954	62.397	114.340	611.256	725.596
2016	23.358	40.588	63.975	65.618	73.832	71.111	45.566	53.977	51.340	63.746	95.783		648.894	648.894

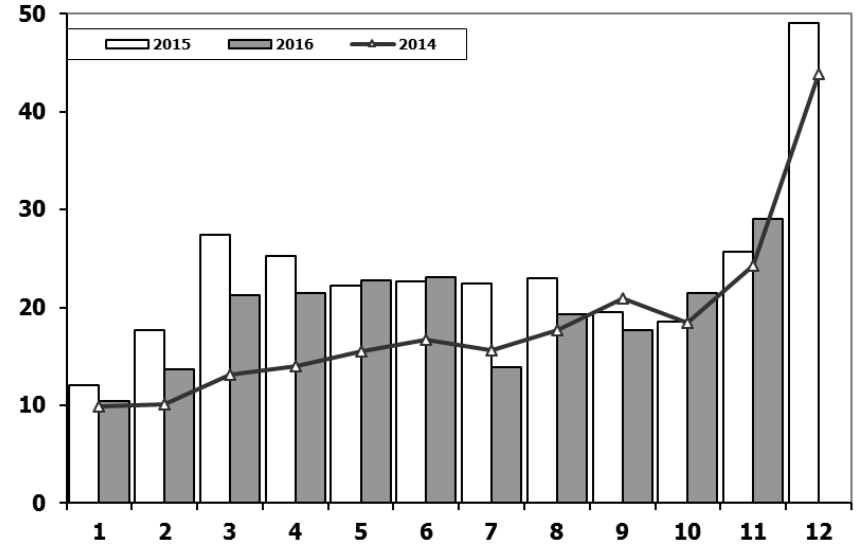
Ticari Araç Pazarının Analizi (x1000)

CV Market Analysis (x1000)



Ticari Araç Pazarı (x1000)

CV Total Market (x1000)

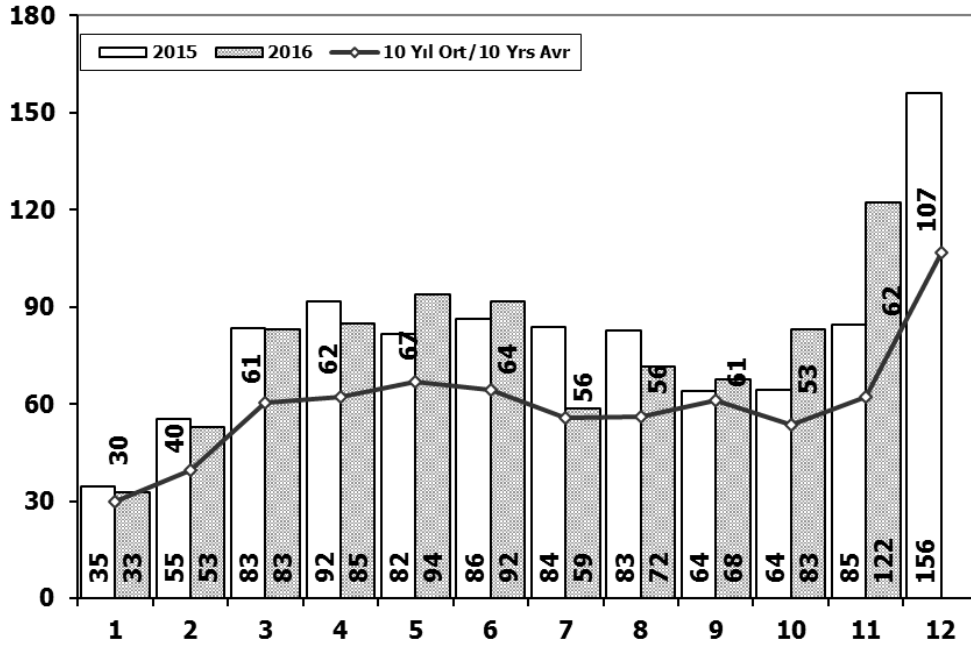


Aylar / Months	10 Yil Ort. 10 Yrs Avr. (x1000)	2016 (x1000)	%
1	11,8	10,4	-11,7
2	15,1	13,6	-9,8
3	22,0	21,2	-3,5
4	21,6	21,4	-1,0
5	23,3	22,7	-2,4
6	22,3	23,1	3,7
7	19,4	13,9	-28,1
8	20,4	19,3	-5,5
9	22,6	17,7	-21,5
10	18,9	21,5	13,5
11	21,6	29,1	34,3
Total	219,0	214,0	-2,3

	1	2	3	4	5	6	7	8	9	10	11	12	11 Ay/Mo	Total
2006	13.463	19.717	28.094	28.676	34.768	25.221	17.384	22.501	22.112	18.568	25.421	36.371	255.925	292.296
2007	11.764	14.490	21.152	20.429	22.188	21.535	21.871	25.702	22.416	23.489	27.374	44.331	232.410	276.741
2008	15.204	16.925	22.667	20.654	20.150	20.669	19.162	20.490	19.776	15.359	10.951	18.539	202.007	220.546
2009	7.458	8.354	15.909	18.224	20.699	22.083	13.609	14.555	31.241	8.289	11.421	34.208	171.842	206.050
2010	8.456	11.662	19.870	20.530	21.161	21.304	22.319	22.423	24.124	28.921	27.345	55.273	228.115	283.388
2011	17.790	23.344	29.310	28.236	28.791	29.149	21.846	22.503	23.679	25.132	22.244	45.324	272.024	317.348
2012	10.142	14.638	21.687	20.369	24.360	23.932	20.591	19.612	23.837	19.237	22.748	40.187	221.153	261.340
2013	11.305	14.117	20.903	20.016	23.038	19.481	19.014	15.772	18.112	13.414	18.900	34.397	194.072	228.469
2014	9.857	10.141	13.152	13.997	15.530	16.674	15.604	17.708	20.918	18.445	24.242	43.887	176.268	220.155
2015	12.078	17.716	27.445	25.220	22.267	22.697	22.407	22.930	19.534	18.566	25.646	49.092	236.506	285.598
2016	10.382	13.635	21.239	21.423	22.744	23.092	13.939	19.292	17.731	21.505	29.052		214.034	214.034

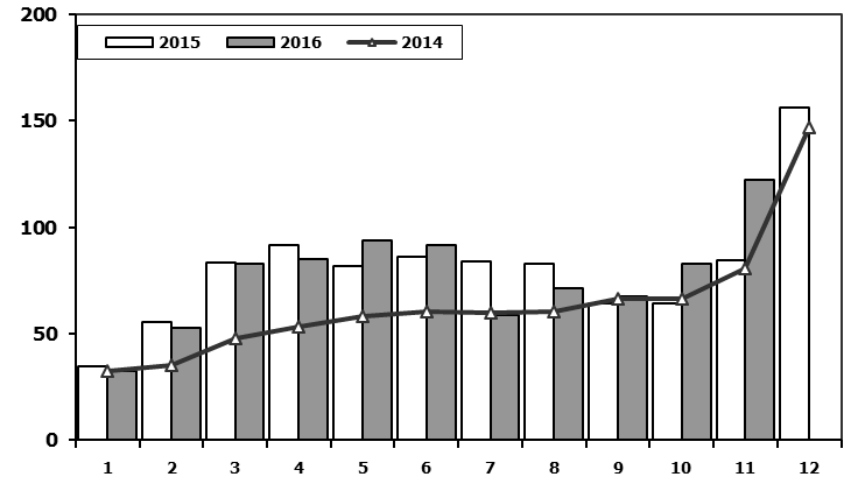
Hafif Araç Pazarının Analizi (x1000)

LV Market Analysis (x1000)



Hafif Araç Pazarı (x1000)

LV Total Market (x1000)

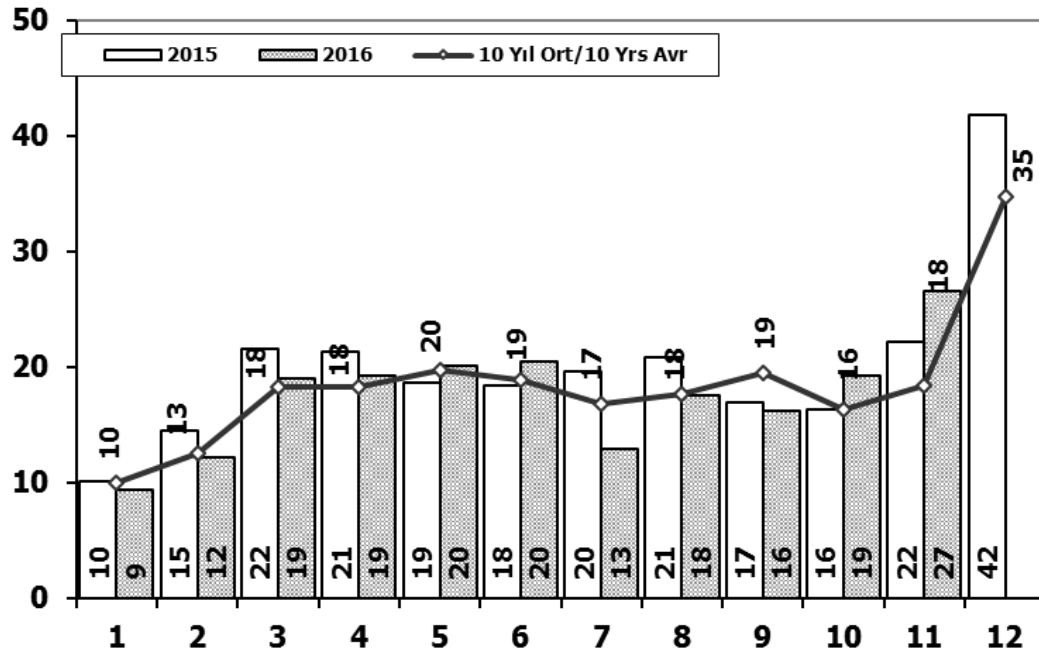


Aylar / Months	10 Yıl Ort. / 10 Yrs Avr. (x1000)	2016 (x1000)	%
1	30,0	32,7	9,2
2	39,7	52,8	33,1
3	60,5	82,9	37,0
4	62,1	84,9	36,7
5	67,0	93,9	40,2
6	64,4	91,5	42,1
7	55,8	58,5	4,9
8	56,0	71,6	27,8
9	61,0	67,6	10,8
10	53,5	83,0	55,2
11	62,3	122,3	96,2
Total	612,3	841,8	37,5

	1	2	3	4	5	6	7	8	9	10	11	12	11 Ay/Mo	Total
2006	27.917	40.938	60.052	64.038	78.229	54.355	37.251	43.767	46.109	36.542	51.867	76.787	541.065	617.852
2007	23.117	29.184	41.890	42.366	47.938	48.674	47.490	50.558	46.581	52.725	63.313	100.926	493.836	594.762
2008	31.527	35.251	53.649	47.701	48.598	46.324	42.156	43.670	43.932	32.884	26.253	42.078	451.945	494.023
2009	19.606	21.742	55.111	52.640	63.191	61.067	28.845	35.609	81.397	21.033	27.962	88.923	468.203	557.126
2010	20.095	31.172	51.769	54.946	59.377	60.896	61.345	61.764	63.814	73.404	73.962	148.369	612.544	760.913
2011	44.892	58.663	78.403	77.695	80.646	81.573	63.044	58.406	60.129	69.421	63.657	127.910	736.529	864.439
2012	29.545	41.324	64.884	62.949	70.863	71.067	62.304	58.148	69.629	59.938	71.710	115.400	662.361	777.761
2013	35.523	48.307	68.774	73.575	81.468	74.096	71.596	65.043	67.963	58.014	79.301	129.718	723.660	853.378
2014	32.670	35.021	47.581	53.305	58.121	60.163	59.907	60.199	66.531	66.573	80.621	146.989	620.692	767.681
2015	34.615	55.331	83.302	91.602	81.542	86.158	83.836	82.577	64.025	64.255	84.601	156.173	811.844	968.017
2016	32.713	52.825	82.948	84.887	93.904	91.540	58.533	71.556	67.593	83.000	122.309		841.808	841.808

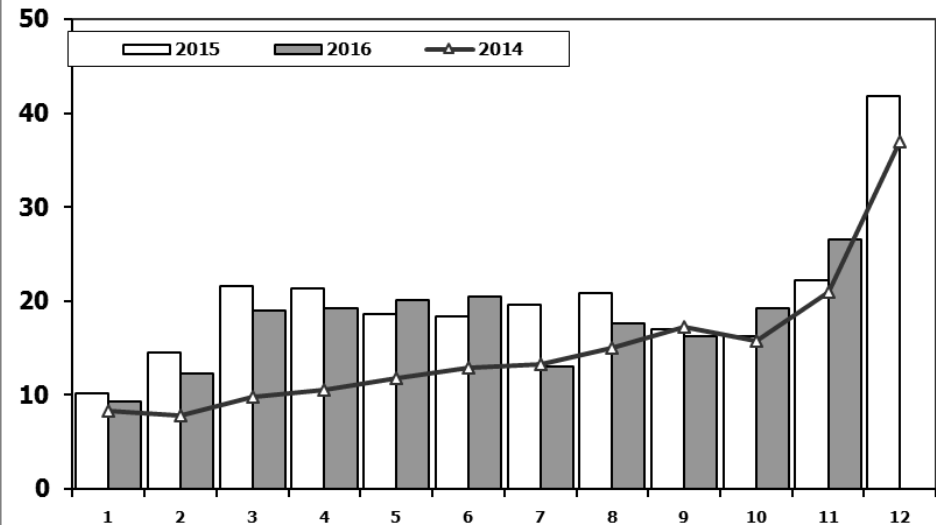
Hafif Ticari Araç Pazarının Analizi (x1000)

LCV Market Analysis (x1000)



Hafif Ticari Araç Pazarı (x1000)

LCV Total Market (x1000)

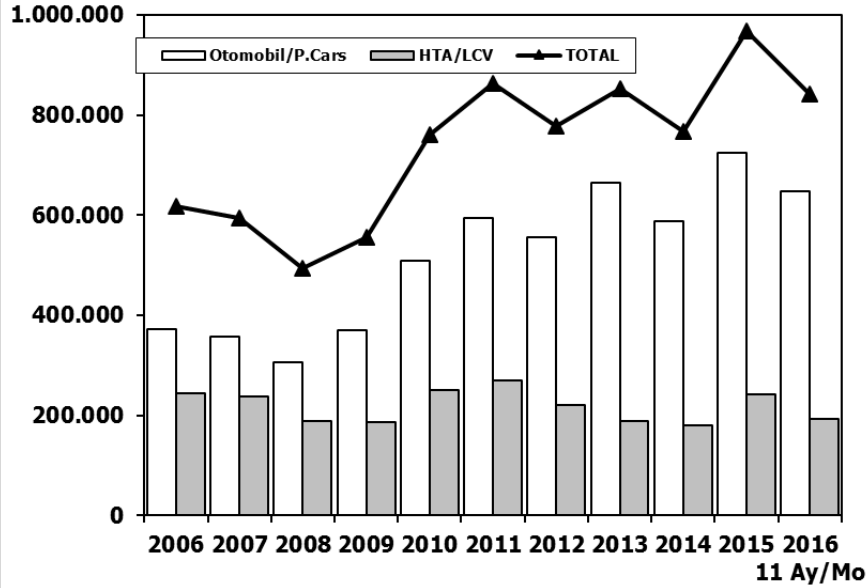


Aylar / Months	10 Yıl Ort. 10 Yrs Avr. (x1000)	2016 (x1000)	%
1	10,0	9,4	-6,3
2	12,5	12,2	-2,5
3	18,3	19,0	3,8
4	18,3	19,3	5,3
5	19,8	20,1	1,5
6	18,9	20,4	8,4
7	16,9	13,0	-23,1
8	17,7	17,6	-0,6
9	19,5	16,3	-16,5
10	16,3	19,3	18,3
11	18,5	26,5	43,7
Total	186,5	192,9	3,4

	1	2	3	4	5	6	7	8	9	10	11	12	11 Ay/Mo	Total
2006	11.411	16.009	23.056	23.861	29.708	21.373	14.598	18.894	18.592	15.305	21.390	30.436	214.197	244.633
2007	9.931	11.972	17.554	17.162	18.871	18.548	19.244	22.089	18.919	20.156	23.670	39.181	198.116	237.297
2008	12.939	14.055	19.502	17.388	17.121	17.600	16.626	17.568	16.879	13.096	9.052	16.199	171.826	188.025
2009	6.433	7.250	14.489	16.438	19.003	20.048	12.208	13.072	29.235	7.205	10.181	31.745	155.562	187.307
2010	7.501	10.521	17.811	18.397	18.910	18.810	19.946	19.542	21.337	25.545	23.901	48.908	202.221	251.129
2011	15.024	19.659	24.380	23.860	24.344	24.859	19.526	19.531	20.165	21.913	18.706	38.953	231.967	270.920
2012	8.468	12.135	17.614	17.304	20.403	20.218	17.773	16.912	20.269	16.498	19.413	34.474	187.007	221.481
2013	9.688	11.493	16.989	16.576	19.085	15.806	15.884	13.432	15.038	11.029	15.184	28.519	160.204	188.723
2014	8.302	7.854	9.769	10.536	11.742	12.885	13.305	15.068	17.269	15.759	20.926	36.935	143.415	180.350
2015	10.117	14.514	21.626	21.391	18.664	18.392	19.618	20.824	16.937	16.301	22.204	41.833	200.588	242.421
2016	9.355	12.237	18.973	19.269	20.072	20.429	12.967	17.579	16.253	19.254	26.526		192.914	192.914

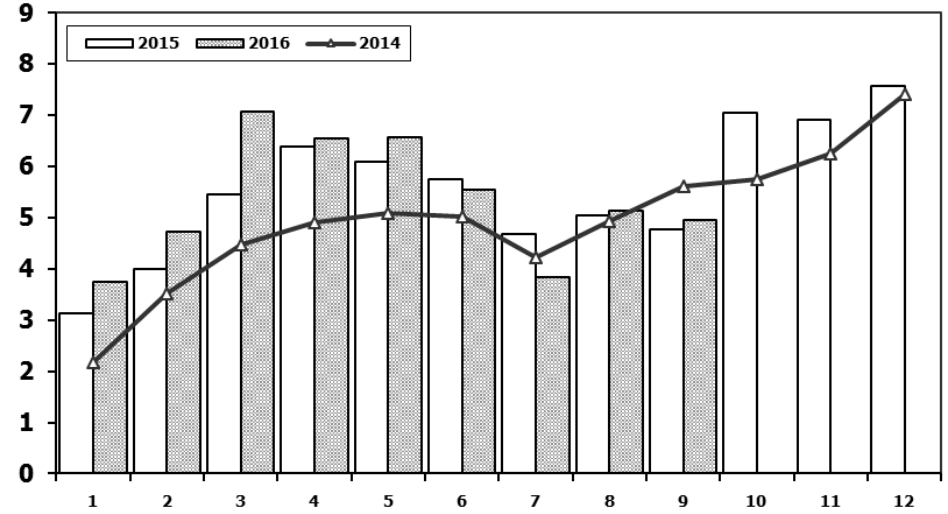
Hafif Araç Pazarı (AYA < 3.5 Ton)

Light Vehicle Market (GVW < 3.5 Ton)



Traktör Pazarı (x1000)

F.Tractor Market (x1000)



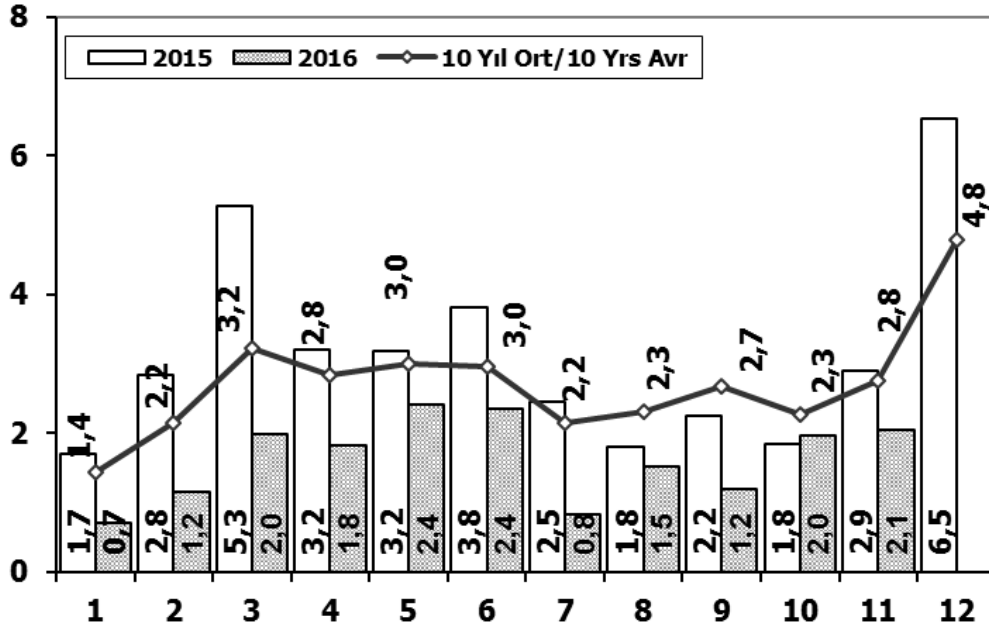
	2006	2007	2008	2009	2010	2011	2012	2013	2014	2015	2016
Otomobil/P.Cars	373.219	357.465	305.998	369.819	509.784	593.519	556.280	664.655	587.331	725.596	648.894
HTA/LCV	244.633	237.297	188.025	187.307	251.129	270.920	221.481	188.723	180.350	242.421	192.914
TOTAL	617.852	594.762	494.023	557.126	760.913	864.439	777.761	853.378	767.681	968.017	841.808
HTA/LCV (%)	40	40	38	34	33	31	28	22	23	25	23

	1	2	3	4	5	6	7	8	9	10	11	12	9 Ay/Mo	Total
2006	4.018	2.139	3.201	3.599	5.529	3.401	2.450	2.608	2.820	2.872	3.697	3.373	29.765	39.707
2007	2.816	2.244	3.053	2.657	3.188	3.141	2.497	2.381	3.025	2.755	3.549	3.097	25.002	34.403
2008	2.770	1.855	3.395	3.081	2.769	2.400	2.232	2.485	1.856	1.773	1.305	1.101	22.843	27.022
2009	717	572	688	1.070	1.297	1.256	1.054	1.183	1.117	1.356	1.304	2.144	8.954	13.758
2010	1.111	1.991	2.330	3.039	2.567	2.638	1.965	3.019	2.806	4.424	3.978	6.168	21.466	36.036
2011	2.975	5.242	5.927	5.358	6.016	6.335	4.534	4.051	4.140	5.828	4.943	4.992	44.578	60.341
2012	2.362	1.983	4.348	6.579	6.273	4.569	3.837	3.158	3.618	4.027	4.807	4.757	36.727	50.318
2013	2.161	2.432	4.005	4.585	5.616	3.136	4.574	3.408	4.935	4.762	5.781	6.891	34.852	52.286
2014	2.169	3.512	4.476	4.905	5.094	5.028	4.233	4.920	5.619	5.743	6.250	7.409	39.956	59.358
2015	3.124	3.984	5.460	6.383	6.078	5.748	4.677	5.044	4.765	7.049	6.898	7.564	45.263	66.774
2016	3.739	4.731	7.067	6.546	6.575	5.543	3.833	5.134	4.945				48.113	48.113

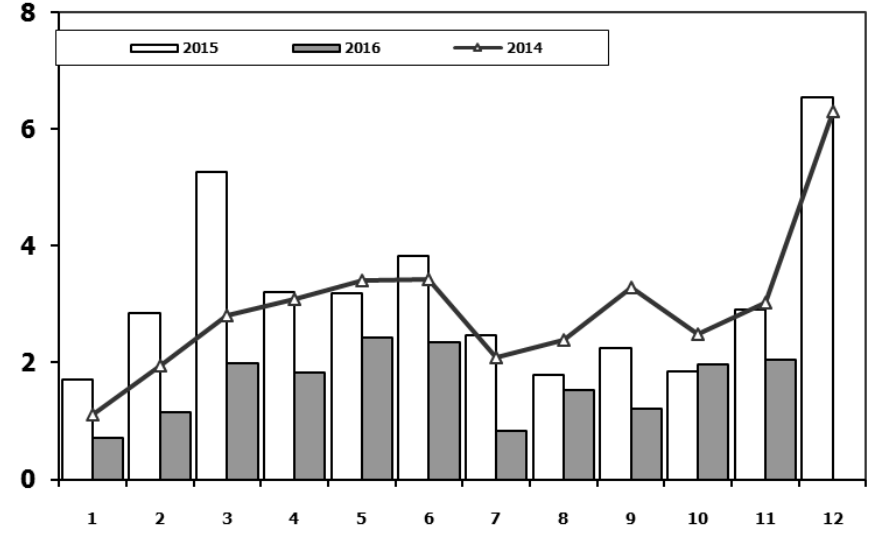
Kaynak: TÜİK trafik kayıtları.

Rakamlar, son iki model yılına ait traktör tescillerinden oluşmaktadır.

Kamyon Pazarının Analizi (x1000) AYA > 5 Ton Truck Market Analysis (x1000) GVW > 5 Ton



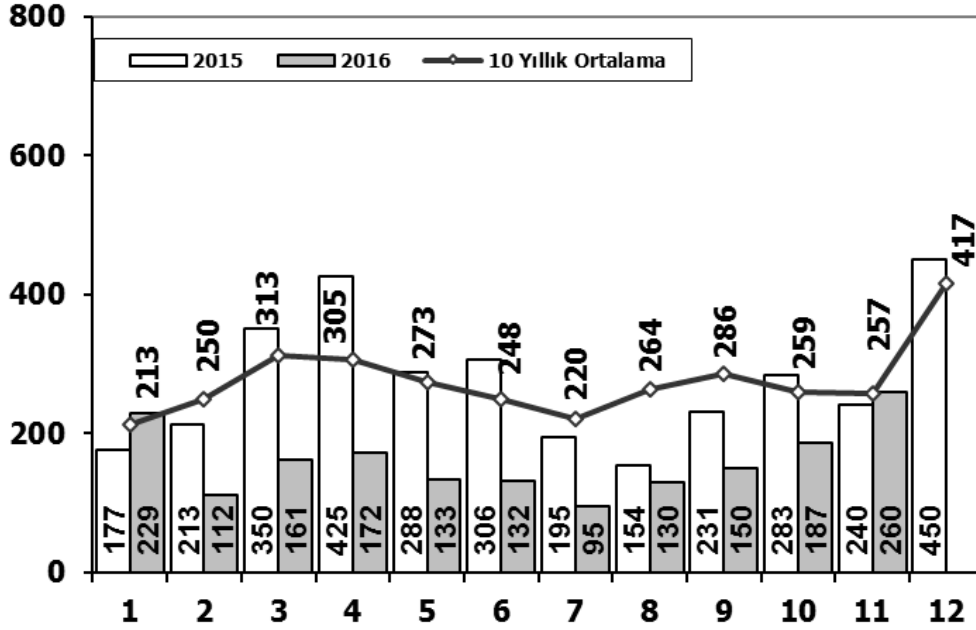
Kamyon Pazarı (x1000) AYA > 5 Ton Truck Market (x1000) GVW > 5 Ton



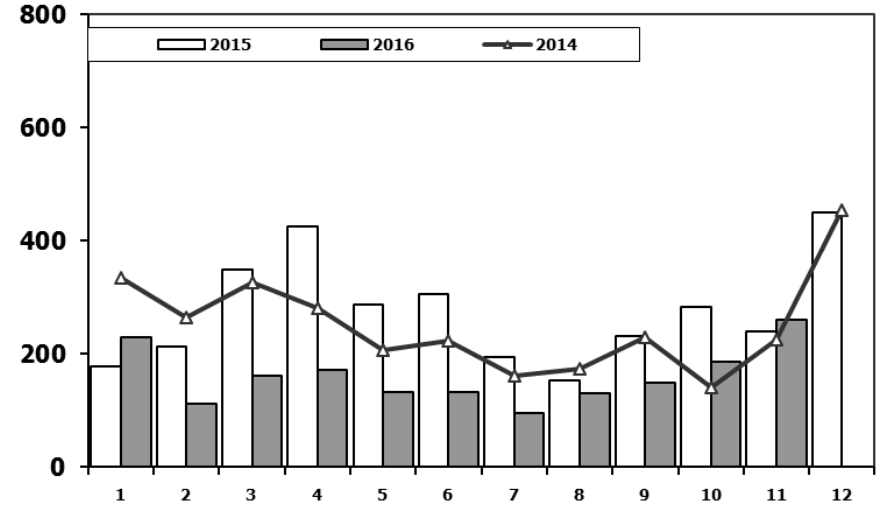
Aylar / Months	10 Yil Ort. 10 Yrs Avr. (x1000)	2016 (x1000)	%
1	1,4	0,7	-50,5
2	2,2	1,2	-46,5
3	3,2	2,0	-38,4
4	2,8	1,8	-35,2
5	3,0	2,4	-19,2
6	3,0	2,4	-20,4
7	2,2	0,8	-61,5
8	2,3	1,5	-33,8
9	2,7	1,2	-55,0
10	2,3	2,0	-13,6
11	2,8	2,1	-23,2
Total	27,8	18,1	-34,8

	1	2	3	4	5	6	7	8	9	10	11	12	11 Ay/Mo	Total
2006	1.767	3.310	4.467	4.180	4.449	3.398	2.472	3.142	3.052	2.926	3.550	5.358	36.713	42.071
2007	1.554	2.055	3.065	2.940	2.865	2.613	2.372	3.145	2.988	2.886	3.258	4.444	29.741	34.185
2008	1.797	2.309	2.621	2.578	2.459	2.526	2.067	2.377	2.390	1.790	1.512	1.834	24.426	26.260
2009	771	759	1.034	1.342	1.355	1.651	1.156	1.205	1.780	866	981	2.015	12.900	14.915
2010	777	968	1.772	1.807	1.966	2.205	2.093	2.446	2.444	3.071	3.136	5.677	22.685	28.362
2011	2.552	3.292	4.418	3.754	3.803	3.749	1.996	2.478	3.081	2.774	3.108	5.787	35.005	40.792
2012	1.375	2.159	3.595	2.697	3.321	3.250	2.450	2.277	2.991	2.244	3.006	5.000	29.365	34.365
2013	1.077	1.931	3.127	2.720	3.145	2.951	2.411	1.845	2.554	1.801	3.173	5.025	26.735	31.760
2014	1.117	1.949	2.818	3.092	3.405	3.438	2.083	2.390	3.281	2.494	3.028	6.313	29.095	35.408
2015	1.705	2.841	5.270	3.208	3.190	3.824	2.463	1.798	2.244	1.848	2.902	6.540	31.293	37.833
2016	718	1.154	1.984	1.835	2.420	2.358	830	1.529	1.207	1.962	2.123		18.120	18.120

Midibüs Pazarının Analizi (7-9 mt / 25-35 Kişilik) Midibus Market Analysis (7-9 mt / 25-35 Passengers)



Midibüs Pazarı (7-9 mt / 25-35 Kişilik Midibüs) Midibus Market (7-9 mt / 25-35 Passengers)

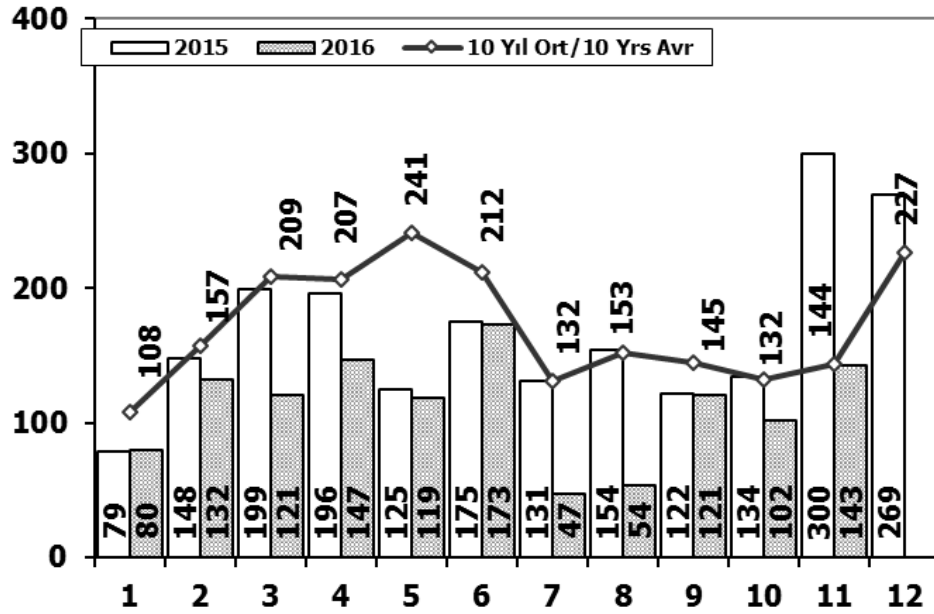


Aylar / Months	10 Yıl Ort. 10 Yrs Avr.	2016	%
1	213	229	7
2	250	112	-55
3	313	161	-49
4	305	172	-44
5	273	133	-51
6	248	132	-47
7	220	95	-57
8	264	130	-51
9	286	150	-47
10	259	187	-28
11	257	260	1
Total	2.888	1.761	-39

	1	2	3	4	5	6	7	8	9	10	11	12	11 Ay/Mo	Total
2006	207	297	406	388	381	266	230	353	322	253	305	401	3.408	3.809
2007	207	272	404	238	302	283	164	365	399	279	283	465	3.196	3.661
2008	391	476	436	512	419	331	368	380	341	352	246	270	4.252	4.522
2009	154	124	160	220	174	198	160	175	168	143	206	323	1.882	2.205
2010	155	131	185	167	140	138	129	246	236	206	202	437	1.935	2.372
2011	138	195	294	316	280	258	211	305	301	276	260	270	2.834	3.104
2012	179	257	277	229	257	239	216	249	325	269	189	398	2.686	3.084
2013	191	268	289	276	283	241	367	235	305	392	415	697	3.262	3.959
2014	335	265	326	280	206	223	161	174	229	140	226	454	2.565	3.019
2015	177	213	350	425	288	306	195	154	231	283	240	450	2.862	3.312
2016	229	112	161	172	133	132	95	130	150	187	260		1.761	1.761

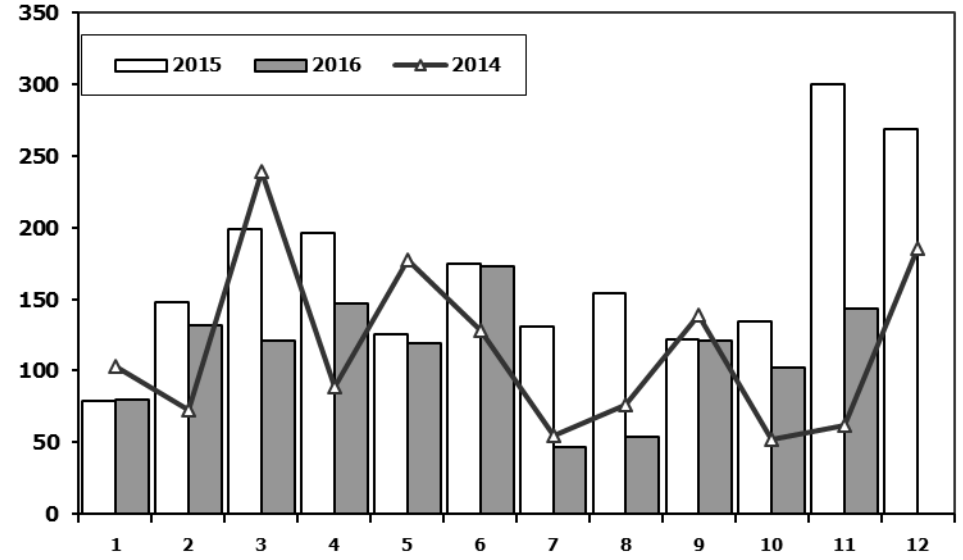
Otobüs Pazarının Analizi

Bus Market Analysis



Otobüs Pazarı

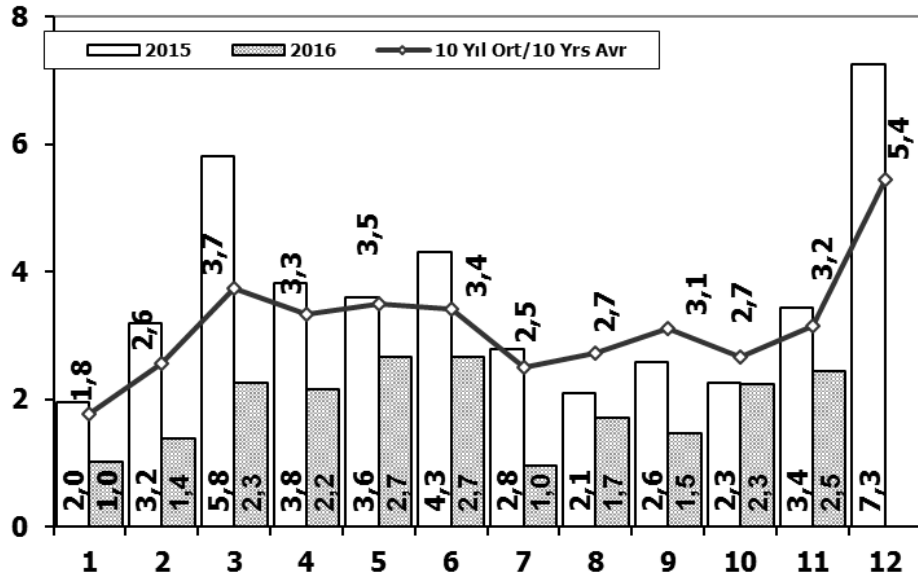
Bus Market



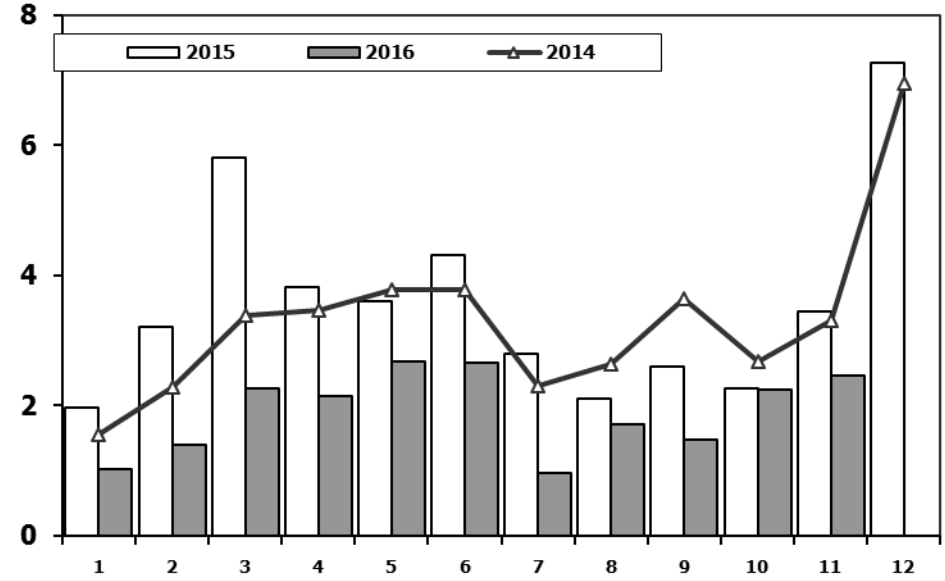
Aylar / Months	10 Yil Ort. / 10 Yrs Avr.	2016	%
1	108	80	-26
2	157	132	-16
3	209	121	-42
4	207	147	-29
5	241	119	-51
6	212	173	-18
7	132	47	-64
8	153	54	-65
9	145	121	-16
10	132	102	-23
11	144	143	-1
Total	1.838	1.239	-33

	1	2	3	4	5	6	7	8	9	10	11	12	11 Ay/Mo	Total
2006	78	101	165	247	230	184	84	112	146	84	176	176	1.607	1.783
2007	72	191	129	89	150	91	91	103	110	168	163	241	1.357	1.598
2008	77	85	108	176	151	212	101	165	166	121	141	236	1.503	1.739
2009	100	221	226	224	167	186	85	103	58	75	53	125	1.498	1.623
2010	23	42	102	159	145	151	151	189	107	99	106	251	1.274	1.525
2011	76	198	218	306	364	283	113	189	132	169	170	314	2.218	2.532
2012	120	87	201	139	379	225	152	174	252	226	140	315	2.095	2.410
2013	349	425	498	444	525	483	352	260	215	192	128	156	3.871	4.027
2014	103	73	239	89	177	128	55	76	139	52	62	185	1.193	1.378
2015	79	148	199	196	125	175	131	154	122	134	300	269	1.763	2.032
2016	80	132	121	147	119	173	47	54	121	102	143		1.239	1.239

Ağır Ticari Araç Pazarının Analizi (x1000) HCV Market Analysis (x1000)



Ağır Ticari Araç Pazarı (x1000) HCV Market (x1000)

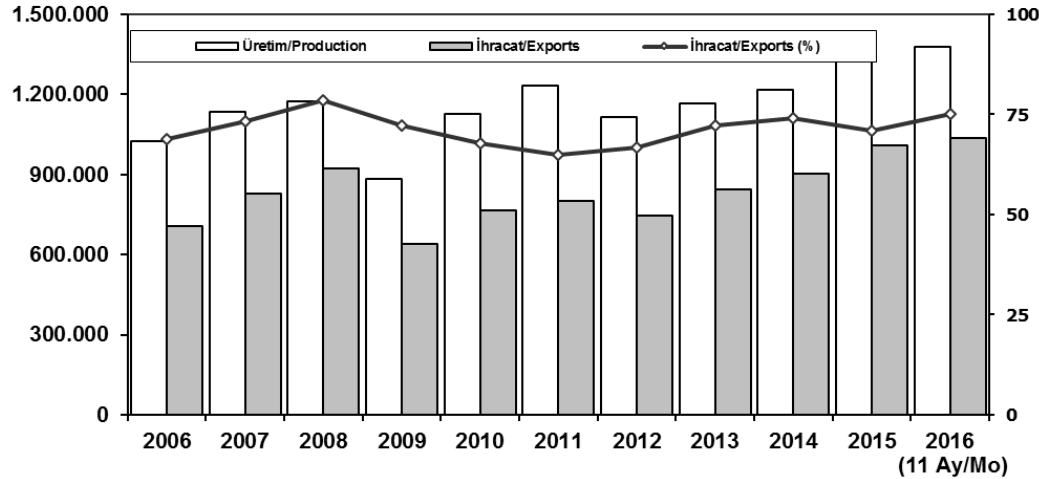


Aylar / Months	10 Yil Ort. 10 Yrs Avr. (x1000)	2016 (x1000)	%
1	1,8	1,0	-42,0
2	2,6	1,4	-45,5
3	3,7	2,3	-39,4
4	3,3	2,2	-35,6
5	3,5	2,7	-23,9
6	3,4	2,7	-22,1
7	2,5	1,0	-61,2
8	2,7	1,7	-37,2
9	3,1	1,5	-52,5
10	2,7	2,3	-15,4
11	3,2	2,5	-20,2
Total	32,5	21,1	-35,1

	1	2	3	4	5	6	7	8	9	10	11	12	11 Ay/Mo	Total
2006	2.052	3.708	5.038	4.815	5.060	3.848	2.786	3.607	3.520	3.263	4.031	5.935	41.728	47.663
2007	1.833	2.518	3.598	3.267	3.317	2.987	2.627	3.613	3.497	3.333	3.704	5.150	34.294	39.444
2008	2.265	2.870	3.165	3.266	3.029	3.069	2.536	2.922	2.897	2.263	1.899	2.340	30.181	32.521
2009	1.025	1.104	1.420	1.786	1.696	2.035	1.401	1.483	2.006	1.084	1.240	2.463	16.280	18.743
2010	955	1.141	2.059	2.133	2.251	2.494	2.373	2.881	2.787	3.376	3.444	6.365	25.894	32.259
2011	2.766	3.685	4.930	4.376	4.447	4.290	2.320	2.972	3.514	3.219	3.538	6.371	40.057	46.428
2012	1.674	2.503	4.073	3.065	3.957	3.714	2.818	2.700	3.568	2.739	3.335	5.713	34.146	39.859
2013	1.617	2.624	3.914	3.440	3.953	3.675	3.130	2.340	3.074	2.385	3.716	5.878	33.868	39.746
2014	1.555	2.287	3.383	3.461	3.788	3.789	2.299	2.640	3.649	2.686	3.316	6.952	32.853	39.805
2015	1.961	3.202	5.819	3.829	3.603	4.305	2.789	2.106	2.597	2.265	3.442	7.259	35.918	43.177
2016	1.027	1.398	2.266	2.154	2.672	2.663	972	1.713	1.478	2.251	2.526		21.120	21.120

İhracat/Üretim (2006-2016) (Traktör dahil)

Exports/Production (2006-2016) (Including F.Tractor)



	2006	2007	2008	2009	2010	2011	2012	2013	2014	2015	2016 (11 Ay/Mo)
Üretim/Production	1.026.427	1.132.951	1.171.917	884.466	1.124.982	1.234.637	1.115.233	1.166.043	1.218.848	1.410.034	1.377.078
İhracat/Exports	706.402	829.879	920.763	637.855	763.670	801.112	745.354	843.467	902.194	1.007.267	1.035.057
İhracat/Exports (%)	69	73	79	72	68	65	67	72	74	71	75

Taşıt Araçları İhracatı (2014-2016)

Motor Vehicle Exports (2014-2016)

SEKTÖR/SECTOR	2014	2015	2015	2016	2016/2015 (%)
			11 Ay-11 Mo		
OTOMOBİL/ P.Cars	581.993	604.683	544.561	658.602	21
TİCARİ ARAÇLAR / CV	303.187	387.652	355.491	363.878	2
* Kamyonet/Pick-Up	269.995	341.834	311.364	320.835	3
* Minibüs/Minibus	26.458	38.255	37.352	31.044	-17
* Kamyon/Truck	1.281	1.408	1.170	5.189	344
* Midibüs/Midibus	824	447	390	862	121
* Otobüs/Bus	4.629	5.708	5.215	5.948	14
TAŞIT ARAÇLARI /MV TOTAL	885.180	992.335	900.052	1.022.480	14
TRAKTÖR/F.TRACTOR	17.014	14.932	13.941	12.577	-10
TOTAL	902.194	1.007.267	913.993	1.035.057	13

Otomotiv Ana ve Yan Sanayii İhracatı (ABD \$)

CBU and CKD Exports - \$

Sektör / Sector	2012	2013	2014	2015	2015	2016	2016/2015 (%)
					Ocak-Kasım / January-November		
Toplam Yan Sanayi/Total Component Industry	8.215.636.677	9.065.017.539	9.504.013.791	8.643.538.318	7.962.920.623	8.242.377.589	4%
İç ve Dış Lastik / Tyres	1.199.566.307,01	1.130.005.891,78	1.126.709.610,14	961.494.045	893.824.496	900.260.728	1%
Emniyet Camı / Safety Glasses	120.615.917,59	135.230.309,67	143.208.298,99	124.569.031	114.570.632	109.775.705	-4%
Motor (Engine)	272.085.582,31	319.294.885,46	171.893.752,32	221.897.271	203.744.213	342.380.808	68%
Akümülatör / Batteries	249.831.846,25	306.451.449,47	289.101.198,21	220.618.374	199.288.965	190.860.095	-4%
Diğer Aksam ve Parça / Spare Parts&Components	6.373.537.023,45	7.174.035.002,35	7.773.100.931,83	7.114.959.599	6.551.492.317	6.699.091.253	2%
Toplam Ana Sanayi/Total Vehicle Industry	11.100.115.134	12.491.591.365	13.259.499.977	12.975.346.180	11.784.314.733	13.655.454.743	16%
Otobüs / Bus	855.424.303,62	937.790.962,87	985.983.007,01	1.024.134.143	929.668.691	1.092.641.887	18%
Midibüs-Minibüs / Minibus- Minibus	161.806.275,12	147.769.644,17	97.685.509,12	130.195.838	118.910.756	214.807.151	81%
Otomobil (P. Cars)	6.068.045.119,19	6.855.475.589,83	7.258.361.005,24	6.881.972.133	6.264.270.862	7.250.448.979	16%
Kamyon-Kamyonet/HCV-LCV	3.433.310.998,81	3.918.798.755,31	4.201.760.813,55	4.263.767.944	3.859.437.215	4.236.860.468	10%
Römork ve Yarı Römork/Trailer-Semi Trailer	195.093.508,21	218.385.731,69	252.354.014,20	252.432.565	223.126.585	246.449.223	10%
Çekici/Truck-Tractor	71.336.634,88	77.907.406,95	38.396.524,81	48.108.959	41.019.532	309.491.572	654%
Tarım Traktörü/Farm Tractor	315.098.293,75	335.463.274,61	424.959.103,39	374.734.597	347.881.094	304.755.463	-12%
Toplam/Total	19.315.751.810	21.556.608.904	22.763.513.769	21.618.884.498	19.747.235.357	21.897.832.331	11%

Kaynak: Uludağ İhracatçı Birlikleri . ÜİB tarafından OSD için özel olarak analiz edilen Otomotiv İhracatı kapsamında; ÜİB Türkiye Genel Otomotiv Endüstrisi sınıflandırmasına kıyasla "Römork ve Yan Römork", "Tarım Traktörü" verileri dahil edilmekte; "Kullanılmış Araçlar", "İki Tekerlekli Taşıtlar", "Demiryolu Taşıtları" hariç tutulmaktadır.

Firma Bazında İhracat (Adet)
Export Of Member Companies (Unit)

FİRMALAR Companies	2014	2015	Ocak-Kasım January-November	
			2015	2016
			TOFAŞ	142.234
OYAK RENAULT	257.992	270.299	242.445	243.718
FORD OTOSAN	187.921	252.571	230.161	234.035
HYUNDAI ASSAN	179.793	201.276	182.099	188.233
TOYOTA	109.517	81.962	75.212	86.726
TÜRK TRAKTÖR	15.866	14.122	13.229	11.650
M. BENZ TÜRK	3.438	4.252	3.821	7.970
KARSAN	37	3.067	3.004	3.109
HONDA TÜRKİYE	1.560	2.220	2.100	2.468
MAN TÜRKİYE	937	1.493	1.403	1.567
HATTAT TARIM	1.148	810	712	927
OTOKAR	580	720	622	693
A.I.O.S.	748	291	240	606
TEMSA GLOBAL	423	441	380	586
GENEL TOPLAM	902.194	1.007.267	913.993	1.035.057

Kaynak: OSD

Sektör Bazında İhracat (1000 \$)
Exports on Sectorial Basis

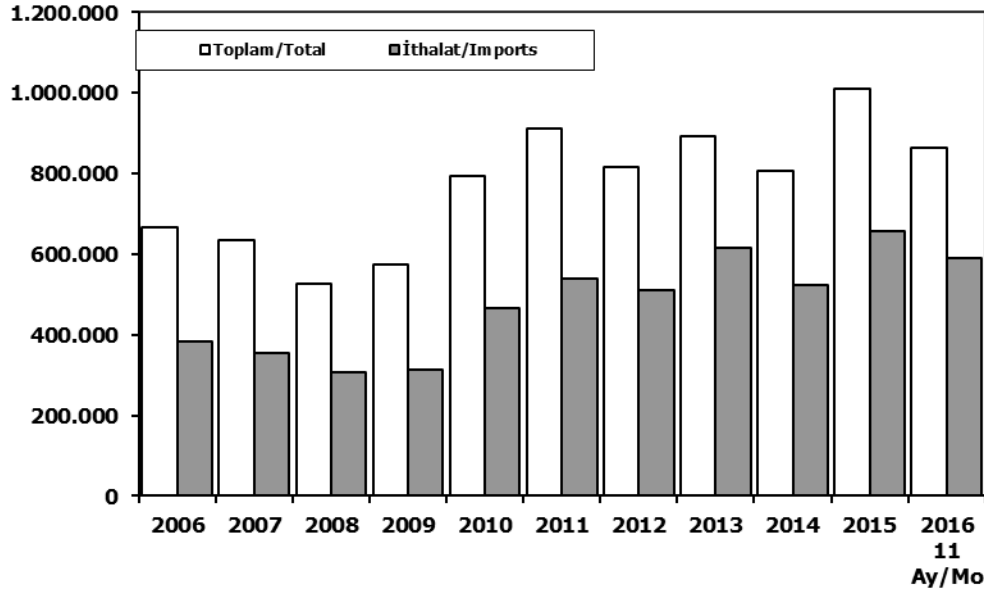
SEKTÖRLER (1.000 \$)	KASIM				OCAK - KASIM			
	2015	2016	Değişim ('16/'15)	Pay(16)	2015	2016	Değişim ('16/'15)	Pay(16)
Otomotiv Endüstrisi	1.916.058	2.239.202	16,9	18,7	19.304.376	21.530.457	11,5	16,7
Hazırgiyim ve Konfeksiyon	1.404.314	1.318.764	-6,1	11,0	15.566.543	15.637.006	0,5	12,1
Kimyevi Maddeler ve Mamulleri	1.295.932	1.158.138	-10,6	9,7	14.136.459	12.662.877	-10,4	9,8
Elektrik Elektronik ve Hizmet	927.259	902.451	-2,7	7,6	9.537.372	9.039.477	-5,2	7,0
Çelik	661.529	741.641	12,1	6,2	9.119.901	8.159.521	-10,5	6,3
Tekstil ve Hammaddeleri	658.550	695.399	5,6	5,8	7.320.007	7.227.617	-1,3	5,6
Hububat, Bakliyat, Yağlı Tohumlar ve Mamulleri	607.628	603.202	-0,7	5,0	5.585.212	5.749.492	2,9	4,5
Demir ve Demir Dışı Metaller	504.229	518.569	2,8	4,3	5.723.967	5.458.483	-4,6	4,2
Makine ve Aksamları	486.625	455.894	-6,3	3,8	5.021.056	4.811.894	-4,2	3,7
Mobilya, Kağıt ve Orman Ürünleri	342.230	371.013	8,4	3,1	3.726.535	3.749.707	0,6	2,9
TOPLAM	11.384.393	11.952.366	5,0	100,0	132.088.053	128.973.332	-2,4	100,0

Kaynak: TİM

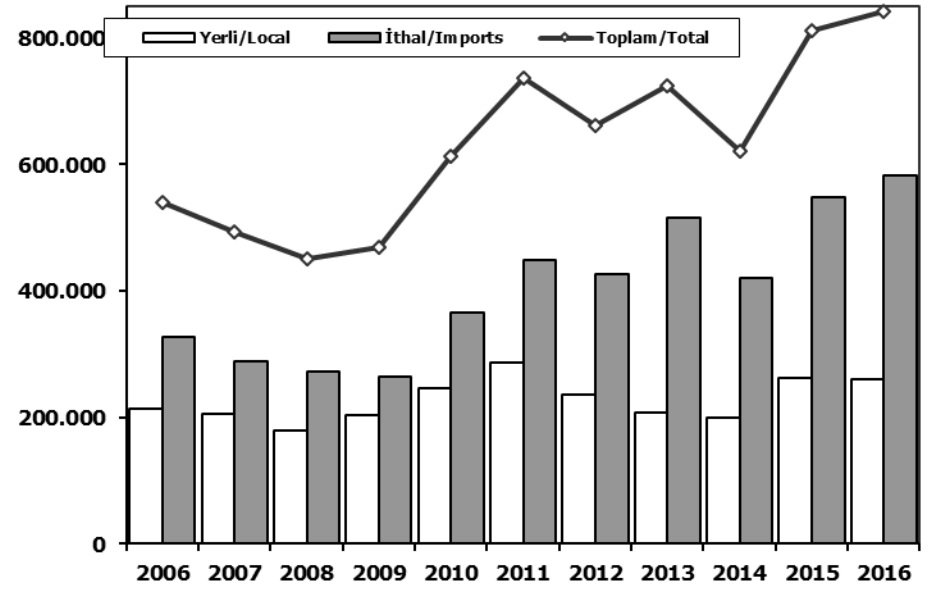
First 3 Sectors:

- 1- Automotive Industry
- 2- Ready Wear and Confection
- 3-Chemical Articles and Products

Toplam Pazar (Otomobil+T.Araç) Total Market (P.Cars+C.V)



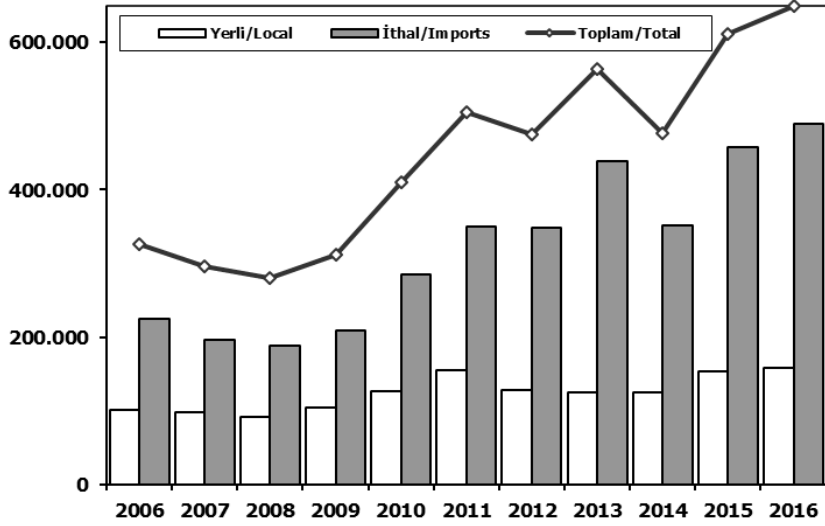
Hafif Araçlar Pazarı (2006-2016 Ocak-Kasım) LV Market (2006-2016 January-November)



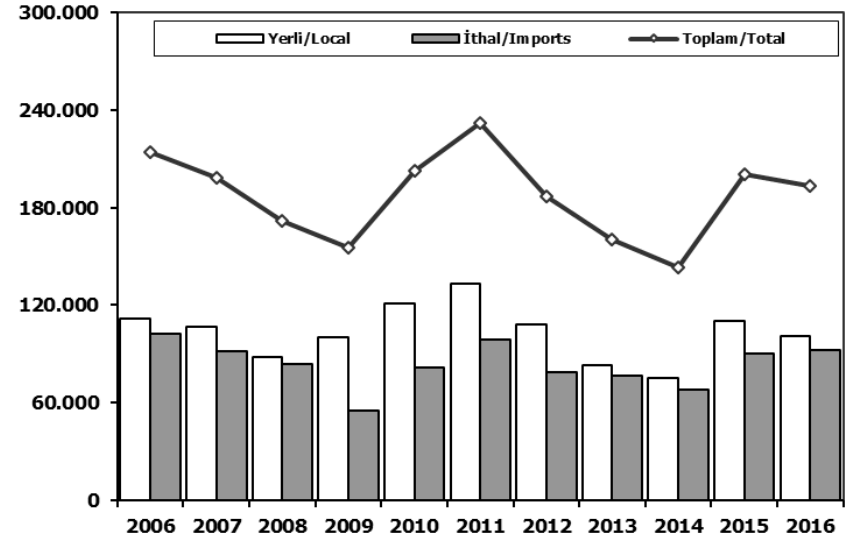
	2006	2007	2008	2009	2010	2011	2012	2013	2014	2015	2015 11 Ay/Mo	2016 11 Ay/Mo
Toplam/Total	665.515	634.206	526.544	575.869	793.172	910.867	817.620	893.124	807.486	1.011.194	847.762	862.928
İthalat/Imports	382.460	355.752	306.087	313.921	465.408	538.532	511.694	615.609	522.842	658.690	560.209	589.321
İthalat/Imports (%)	57	56	58	55	59	59	63	69	65	65	66	68

	2006	2007	2008	2009	2010	2011	2012	2013	2014	2015	2016
Yerli/Local	212.937	205.320	179.578	204.509	246.963	287.751	235.644	208.198	200.483	263.268	259.634
İthal/Imports	328.128	288.516	272.367	263.694	365.581	448.778	426.717	515.462	420.209	548.576	582.174
Toplam/Total	541.065	493.836	451.945	468.203	612.544	736.529	662.361	723.660	620.692	811.844	841.808
İthalat/Imports (%)	61	58	60	56	60	61	64	71	68	68	69

Otomobil Pazarı (2006-2016 Ocak-Kasım) P.Cars Market (2006-2016 January-November)

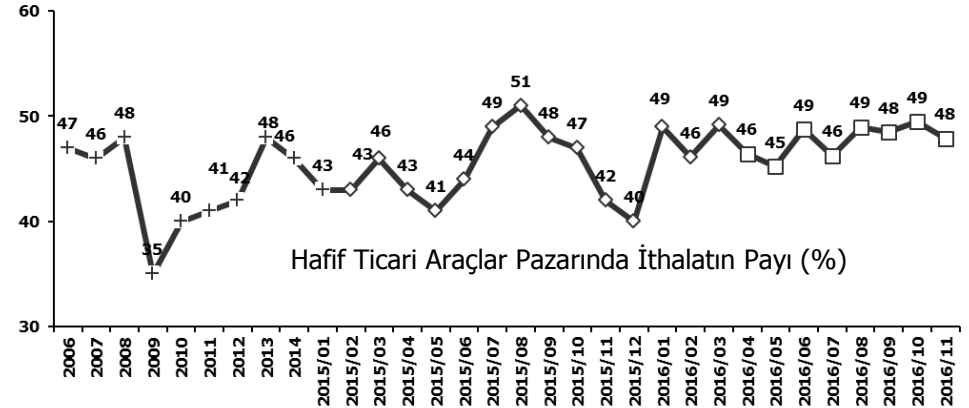
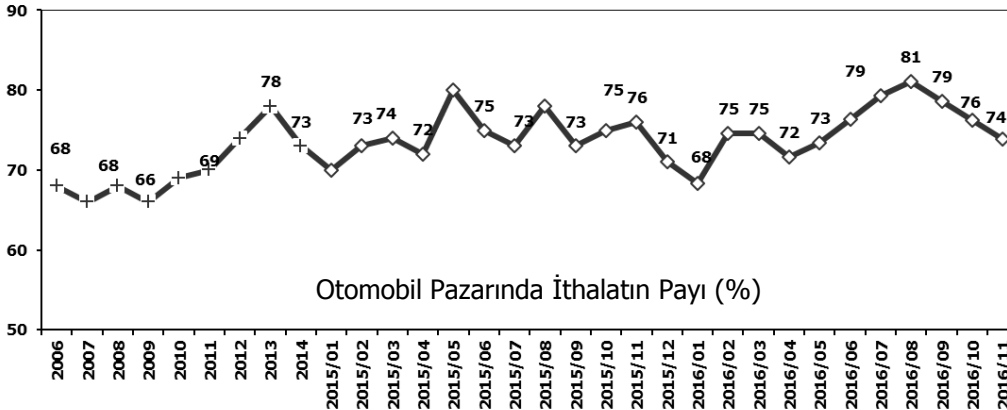


Hafif Ticari Araçlar Pazarı (2006-2016 Ocak-Kasım) Light Commercial Vehicle Market (2006-2016 January-November)



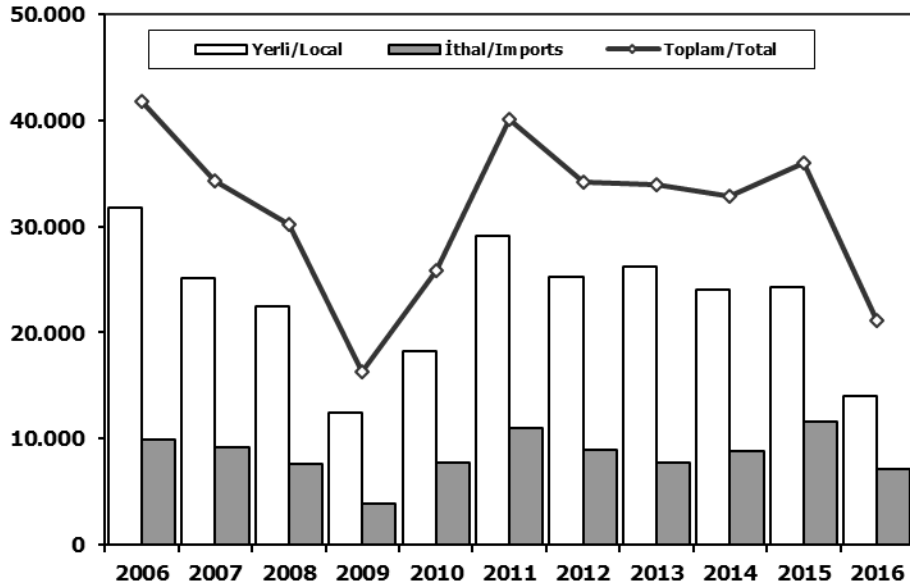
	2006	2007	2008	2009	2010	2011	2012	2013	2014	2015	2016
Yerli/Local	101.288	98.765	91.347	104.322	126.084	154.660	127.535	124.906	125.260	153.170	158.914
İthal/Imports	225.580	196.955	188.772	208.319	284.239	349.902	347.819	438.550	352.017	458.086	489.980
Toplam/Total	326.868	295.720	280.119	312.641	410.323	504.562	475.354	563.456	477.277	611.256	648.894
İthalat/Imports (%)	69	67	67	67	69	69	73	78	74	75	76

	2006	2007	2008	2009	2010	2011	2012	2013	2014	2015	2016
Yerli/Local	111.649	106.555	88.231	100.187	120.879	133.091	108.109	83.292	75.223	110.098	100.720
İthal/Imports	102.548	91.561	83.595	55.375	81.342	98.876	78.898	76.912	68.192	90.490	92.194
Toplam/Total	214.197	198.116	171.826	155.562	202.221	231.967	187.007	160.204	143.415	200.588	192.914
İthalat/Imports (%)	48	46	49	36	40	43	42	48	48	45	48



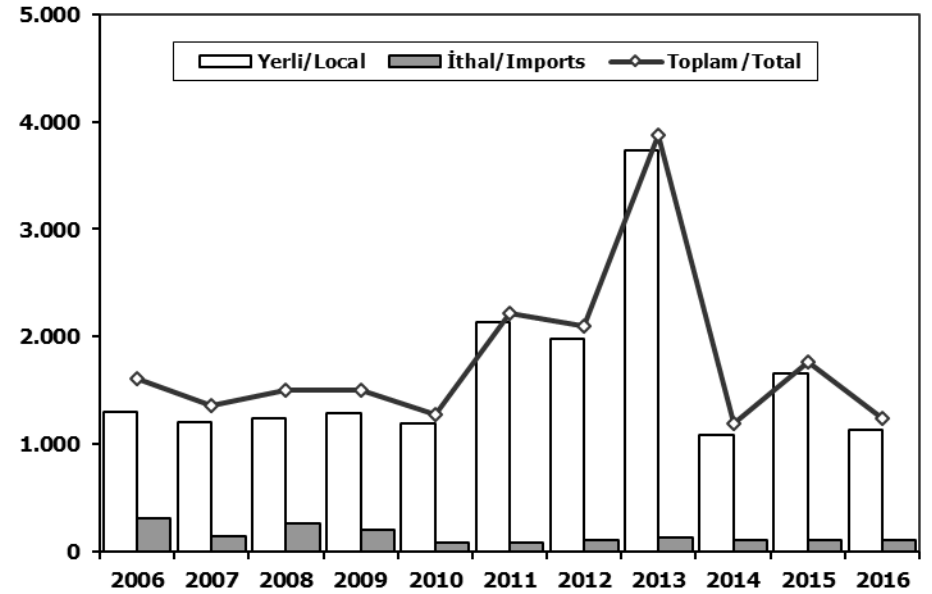
Ağır Ticari Araçlar Pazarı (2006-2016 Ocak-Kasım)

HCV Market (2006-2016 January-November)



Otobüs Pazarı (2006-2016 Ocak-Kasım)

Bus Market (2006-2016 January-November)

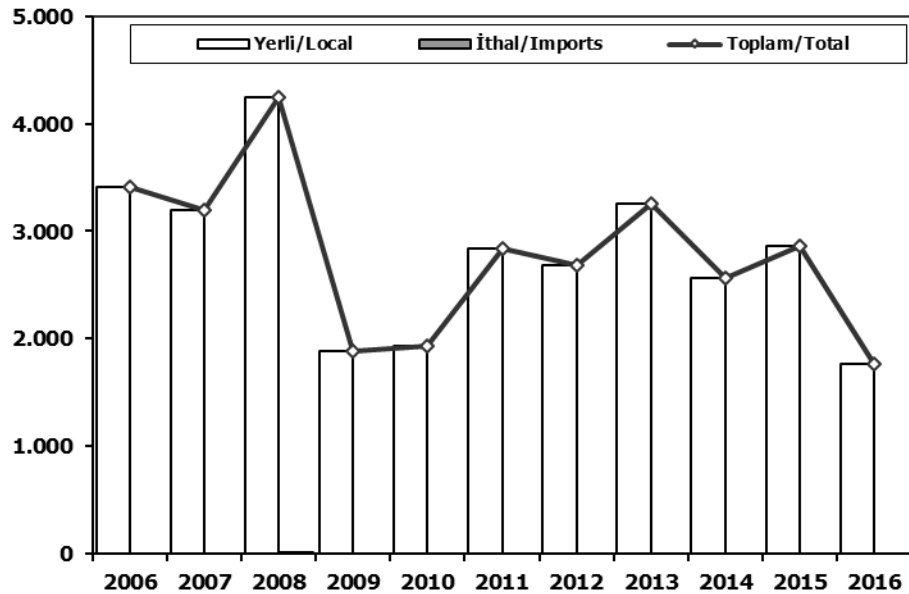


	2006	2007	2008	2009	2010	2011	2012	2013	2014	2015	2016
Yerli/Local	31.760	25.077	22.518	12.418	18.186	29.068	25.211	26.151	23.999	24.285	13.973
İthal/Imports	9.968	9.217	7.663	3.862	7.708	10.989	8.935	7.717	8.854	11.633	7.147
Toplam/Total	41.728	34.294	30.181	16.280	25.894	40.057	34.146	33.868	32.853	35.918	21.120
İthalat/Imports (%)	24	27	25	24	30	27	26	23	27	32	34

	2006	2007	2008	2009	2010	2011	2012	2013	2014	2015	2016
Yerli/Local	1.295	1.209	1.238	1.292	1.188	2.133	1.986	3.736	1.083	1.653	1.129
İthal/Imports	312	148	265	206	86	85	109	135	110	110	110
Toplam/Total	1.607	1.357	1.503	1.498	1.274	2.218	2.095	3.871	1.193	1.763	1.239
İthalat/Imports (%)	19	11	18	14	7	4	5	3	9	6	9

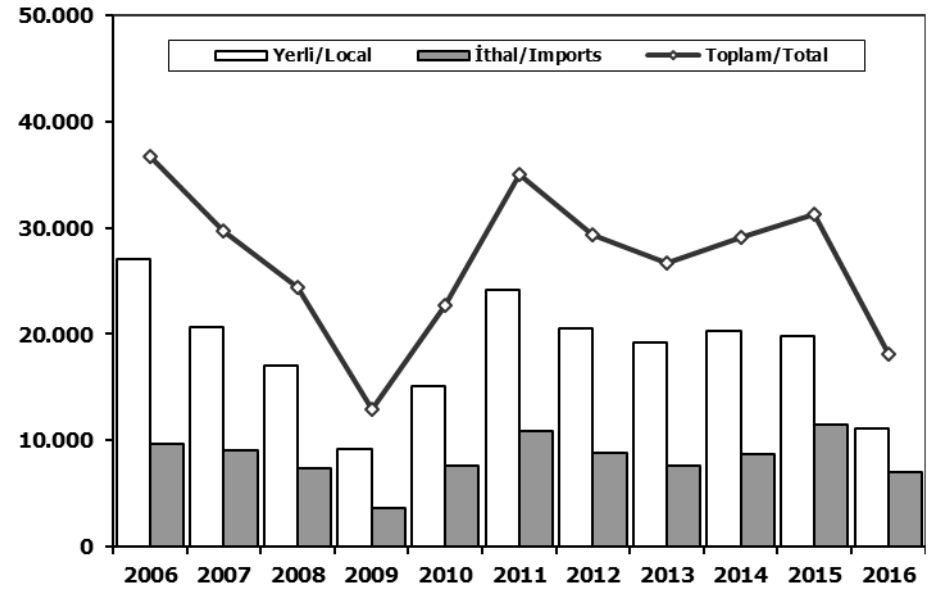
Midibüs Pazarı (2006-2016 Ocak-Kasım) (7-9 mt / 25-35 Kişilik)

Midibus Market (2006-2016 January-November) (7-9 mt / 25-35 Passengers)



Kamyon Pazarı (2006-2016 Ocak-Kasım)

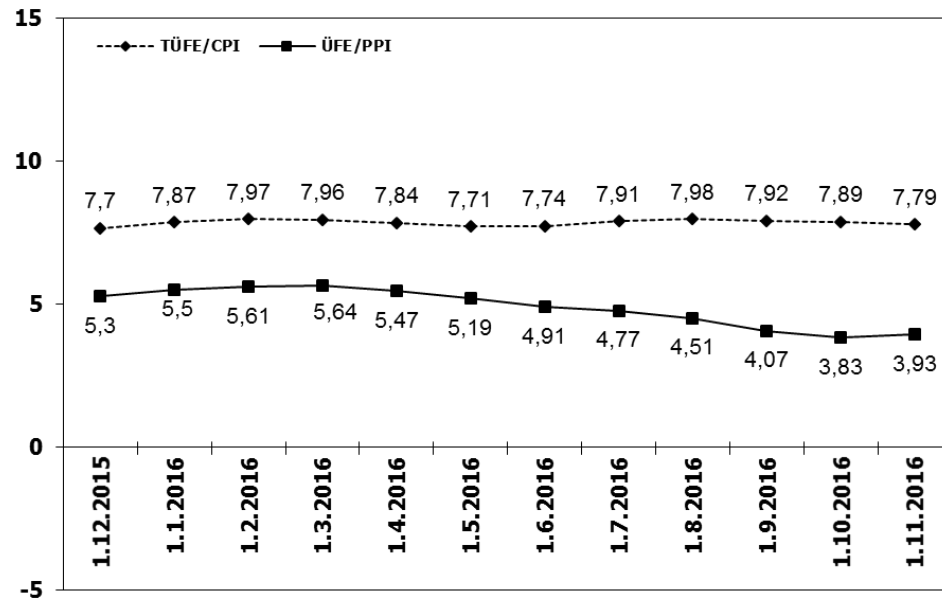
Truck Market (2006-2016 January-November)



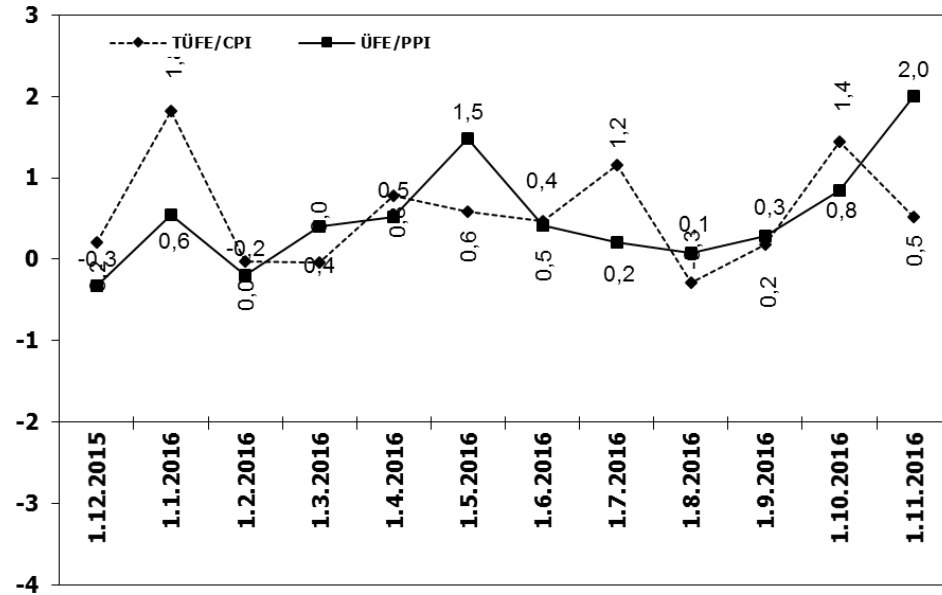
	2006	2007	2008	2009	2010	2011	2012	2013	2014	2015	2016
Yerli/Local	3.408	3.196	4.241	1.882	1.935	2.834	2.686	3.262	2.565	2.862	1.761
İthal/Imports	0	0	11	0	0	0	0	0	0	0	0
Toplam/Total	3.408	3.196	4.252	1.882	1.935	2.834	2.686	3.262	2.565	2.862	1.761
İthalat/Imports (%)	0	0	0	0	0	0	0	0	0	0	0

	2006	2007	2008	2009	2010	2011	2012	2013	2014	2015	2016
Yerli/Local	27.057	20.672	17.039	9.244	15.063	24.101	20.539	19.153	20.351	19.770	11.083
İthal/Imports	9.656	9.069	7.387	3.656	7.622	10.904	8.826	7.582	8.744	11.523	7.037
Toplam/Total	36.713	29.741	24.426	12.900	22.685	35.005	29.365	26.735	29.095	31.293	18.120
İthalat/Imports (%)	26	30	30	28	34	31	30	28	30	37	39

TÜFE ve ÜFE'nin Yıllık Değişimi (%) CPI and PPI Yearly Changes (%)



TÜFE ve ÜFE'nin Aylık Değişimi (%) CPI and PPI Monthly Changes (%)



2016 Otomotiv Sanayii Dış Satışlar 2016 Automotive Industry Exports Sales

TİPLER-Types	Ocak January	Şubat February	Mart March	Nisan April	Mayıs May	Haziran June	Temmuz July	Ağustos August	Eylül September	Ekim October	Kasım November	Aralık December	TOPLAM Total
Otomobil	38.621	60.149	60.631	55.557	60.692	64.973	47.826	51.748	60.526	74.244	83.635	0	658.602
OTOMOBİL-Pass. Car	38.621	60.149	60.631	55.557	60.692	64.973	47.826	51.748	60.526	74.244	83.635	0	658.602
TİCARİ ARAÇ	30.179	38.548	38.174	37.583	33.586	37.062	31.770	18.402	29.872	35.295	33.407	0	363.878
* KAMYONET-Pick Up	28.779	36.960	36.393	35.857	28.361	29.086	26.410	15.178	25.554	29.962	28.295	0	320.835
* KAMYON-Truck	158	335	325	420	501	552	741	450	776	465	466	0	5.189
* MIDİBÜS-Midibus	37	39	68	72	82	88	51	182	85	101	57	0	862
* MINİBÜS-Minibus	723	605	804	674	4.053	6.697	4.247	2.034	2.990	4.162	4.055	0	31.044
* OTOBÜS-Bus	482	609	584	560	589	639	321	558	467	605	534	0	5.948
Traktör	1.340	1.122	1.340	1.327	1.215	1.187	1.339	635	671	1.259	1.142	0	12.577
TRAKTÖR-F.Tractor	1.340	1.122	1.340	1.327	1.215	1.187	1.339	635	671	1.259	1.142	0	12.577
TOPLAM-Total	70.140	99.819	100.145	94.467	95.493	103.222	80.935	70.785	91.069	110.798	118.184	0	1.035.057

Otomobil													
FİRMALAR-Companies	Ocak January	Şubat February	Mart March	Nisan April	Mayıs May	Haziran June	Temmuz July	Ağustos August	Eylül September	Ekim October	Kasım November	Aralık December	TOPLAM Total
FORD OTOSAN	1.559	1.341	1.523	1.515	1.063	1.660	1.261	1.119	1.392	1.377	1.992	0	15.802
HONDA TÜRKİYE	149	0	526	60	230	124	63	106	544	103	563	0	2.468
HYUNDAİ ASSAN	18.350	18.300	19.800	16.180	17.300	19.100	11.300	14.560	16.420	18.400	18.523	0	188.233
OYAK RENAULT	9.605	25.721	24.792	24.166	27.251	28.006	15.145	17.660	19.188	24.221	27.963	0	243.718
TOFAŞ	4.667	8.671	8.032	8.530	9.984	13.068	11.365	9.122	14.309	16.374	17.533	0	121.655
TOYOTA	4.291	6.116	5.958	5.106	4.864	3.015	8.692	9.181	8.673	13.769	17.061	0	86.726
TOPLAM-Total	38.621	60.149	60.631	55.557	60.692	64.973	47.826	51.748	60.526	74.244	83.635	0	658.602

Kamyonet													
FİRMALAR-Companies	Ocak January	Şubat February	Mart March	Nisan April	Mayıs May	Haziran June	Temmuz July	Ağustos August	Eylül September	Ekim October	Kasım November	Aralık December	TOPLAM Total
FORD OTOSAN	18.721	22.710	23.358	20.607	12.878	14.587	16.204	9.650	13.731	17.048	17.335	0	186.829
KARSAN	67	229	77	35	392	421	319	350	354	511	53	0	2.808
OTOKAR	0	0	33	0	0	0	9	0	24	18	0	0	84
TOFAŞ	9.991	14.021	12.925	15.215	15.091	14.069	9.887	5.154	11.451	12.403	10.907	0	131.114
TOPLAM-Total	28.779	36.960	36.393	35.857	28.361	29.086	26.410	15.178	25.554	29.962	28.295	0	320.835

Minibüs													
FİRMALAR-Companies	Ocak January	Şubat February	Mart March	Nisan April	Mayıs May	Haziran June	Temmuz July	Ağustos August	Eylül September	Ekim October	Kasım November	Aralık December	TOPLAM Total
FORD OTOSAN	721	595	749	674	4.050	6.689	4.240	2.023	2.963	4.100	4.037	0	30.841
KARSAN	2	10	55	0	3	8	7	11	27	62	18	0	203
TOPLAM-Total	723	605	804	674	4.053	6.697	4.247	2.034	2.990	4.162	4.055	0	31.044

Kamyon													
FİRMALAR-Companies	Ocak January	Şubat February	Mart March	Nisan April	Mayıs May	Haziran June	Temmuz July	Ağustos August	Eylül September	Ekim October	Kasım November	Aralık December	TOPLAM Total
A.I.O.S.	0	0	0	0	1	0	0	0	1	0	6	0	8
FORD OTOSAN	12	13	71	64	38	62	23	57	87	51	85	0	563
KARSAN	0	0	0	1	0	0	0	0	0	0	0	0	1
M. BENZ TÜRK	146	322	254	355	462	490	718	393	688	414	375	0	4.617
TOPLAM-Total	158	335	325	420	501	552	741	450	776	465	466	0	5.189

Midibüs													
FİRMALAR-Companies	Ocak January	Şubat February	Mart March	Nisan April	Mayıs May	Haziran June	Temmuz July	Ağustos August	Eylül September	Ekim October	Kasım November	Aralık December	TOPLAM Total
A.I.O.S.	14	15	29	30	42	54	16	133	67	34	27	0	461
KARSAN	1	2	0	1	2	0	2	1	0	0	4	0	13
OTOKAR	7	12	24	37	25	31	32	26	13	50	22	0	279
TEMSA GLOBAL	15	10	15	4	13	3	1	22	5	17	4	0	109
TOPLAM-Total	37	39	68	72	82	88	51	182	85	101	57	0	862

Otobüs													
FİRMALAR-Companies	Ocak January	Şubat February	Mart March	Nisan April	Mayıs May	Haziran June	Temmuz July	Ağustos August	Eylül September	Ekim October	Kasım November	Aralık December	TOPLAM Total
A.I.O.S.	0	1	6	7	18	24	1	17	35	11	17	0	137
KARSAN	0	0	0	0	0	20	0	10	21	0	33	0	84
M. BENZ TÜRK	316	366	344	274	342	295	199	349	246	362	260	0	3.353
MAN TÜRKİYE	131	231	170	151	102	178	67	100	127	166	144	0	1.567
OTOKAR	17	10	33	43	38	72	30	14	16	14	43	0	330
TEMSA GLOBAL	18	1	31	85	89	50	24	68	22	52	37	0	477
TOPLAM-Total	482	609	584	560	589	639	321	558	467	605	534	0	5.948

Traktör													
FİRMALAR-Companies	Ocak January	Şubat February	Mart March	Nisan April	Mayıs May	Haziran June	Temmuz July	Ağustos August	Eylül September	Ekim October	Kasım November	Aralık December	TOPLAM Total
HATTAT TARIM	33	107	82	151	145	111	0	35	52	74	137	0	927
TÜRK TRAKTÖR	1.307	1.015	1.258	1.176	1.070	1.076	1.339	600	619	1.185	1.005	0	11.650
TOPLAM-Total	1.340	1.122	1.340	1.327	1.215	1.187	1.339	635	671	1.259	1.142	0	12.577

2016 Yılı İthal Hafif Araç Satışları 2016 Light Vehicles Import Sales

2016 YILI İTHAL OTOMOBİL SATIŞLARI / P.Cars Import 2016

	2015 TOPLAMI 2015 Total	1	2	3	4	5	6	7	8	9	10	11	12	2016 TOPLAMI 2016 Total
VOLKSWAGEN	107.401	2.792	5.763	8.197	7.811	9.597	9.561	7.239	8.438	8.026	9.211	10.587		87.222
OPEL	47.000	1.263	2.521	3.936	4.775	5.754	5.809	3.495	4.116	3.336	4.630	7.129		46.764
DACIA	37.257	1.235	1.963	3.402	3.555	4.179	3.799	2.680	3.120	3.118	3.989	4.745		35.785
RENAULT	32.683	1.258	2.007	4.030	3.336	3.983	3.759	3.507	4.073	2.471	3.074	3.926		35.424
FORD	43.341	972	2.733	3.347	3.141	3.231	4.439	2.025	2.294	1.813	2.467	3.728		30.190
MERCEDES-BENZ	30.333	1.091	1.701	2.480	2.305	3.080	3.786	1.651	2.456	2.758	2.378	5.858		29.544
BMW	31.221	496	2.042	2.080	2.332	3.174	2.640	1.856	2.230	1.806	2.205	4.611		25.472
SKODA	22.107	715	1.435	2.640	2.663	2.787	2.865	1.661	2.357	1.854	2.685	3.705		25.367
NISSAN	26.421	971	1.534	2.989	2.684	2.546	2.584	1.212	2.183	1.957	2.329	4.237		25.226
HYUNDAI	25.164	1.148	1.499	2.651	2.344	2.649	2.296	1.286	1.890	1.947	2.254	2.933		22.897
PEUGEOT	22.808	540	1.730	2.526	1.557	2.349	2.099	1.497	1.601	2.178	2.295	3.207		21.579
SEAT	16.911	502	853	1.443	2.130	1.726	1.929	1.870	1.943	1.496	2.121	3.016		19.029
AUDI	20.279	911	1.200	1.455	2.148	2.352	1.961	905	903	1.541	2.448	3.189		19.013
CITROEN	16.520	394	366	1.562	1.684	1.929	1.613	1.221	1.080	1.519	1.381	2.017		14.766
KIA	13.873	263	574	1.080	1.461	979	1.281	1.435	1.378	954	1.092	2.251		12.748
TOYOTA	12.304	149	588	955	836	1.040	913	754	1.104	858	1.302	1.839		10.338
HONDA	5.413	366	669	1.077	535	629	617	612	777	852	606	732		7.472
SUZUKI	177	7	0	194	151	332	422	234	370	462	575	648		3.395
VOLVO	6.939	187	194	311	335	512	465	130	203	222	291	462		3.312
FIAT	5.241	162	247	336	278	266	232	171	262	212	207	308		2.681
LAND ROVER	1.577	46	131	318	186	200	201	103	215	169	136	232		1.937
JEEP	3.507	92	161	204	188	187	218	99	152	169	192	268		1.930
MINI	1.739	101	74	134	166	161	143	83	123	147	152	226		1.510
SUBARU	1.737	73	112	152	148	165	122	74	103	101	113	201		1.364
MAZDA	1.761	50	67	114	157	171	137	127	84	88	88	151		1.234
PORSCHE	861	55	40	55	59	61	68	32	59	70	91	134		724
MITSUBISHI	1.366	39	71	53	48	79	57	45	61	50	58	92		653
ALFA ROMEO	847	12	75	149	58	68	48	33	31	32	37	53		596
SSANGYONG	605	19	23	37	34	76	70	23	55	47	45	41		470
JAGUAR	336	20	25	34	31	33	48	35	41	42	50	72		431
DS	0	8	34	42	35	24	14	19	34	32	17	42		301
CHERY	394	30	23	12	9	22	25	22	1	0	0	0		144
SMART	88	0	0	16	13	24	12	5	6	14	18	29		137
INFiniti	43	0	0	0	4	6	23	6	7	11	12	24		93
LEXUS	13	0	0	6	7	2	3	4	5	4	7	24		62
MASERATI	73	1	6	1	5	3	6	1	5	5	12	14		59
PROTON	500	10	7	10	12	12	0	0	0	0	0	0		51
ASTON MARTIN	0	2	1	2	4	4	3	2	3	4	1	2		28
FERRARI	10	3	1	0	4	3	1	0	0	1	1	2		16
BENTLEY	19	0	1	0	0	1	0	1	0	3	1	2		9
LAMBORGHINI	6	0	1	0	1	0	1	0	3	0	0	1		7
TATA	168	0	0	0	0	0	0	0	0	0	0	0		0
GEELY	25	0	0	0	0	0	0	0	0	0	0	0		0
LANCIA	2	0	0	0	0	0	0	0	0	0	0	0		0
TOPLAM	539.070	15.983	30.472	48.030	47.230	54.396	54.270	36.155	43.766	40.369	48.571	70.738	0	489.980

2016 YILI İTHAL HAFİF TİCARİ ARAÇ SATIŞLARI / Light Commercial Vehicles Import 2016

	2015 TOPLAMI 2015 Total	1	2	3	4	5	6	7	8	9	10	11	12	2016 TOPLAMI 2016 Total
VOLKSWAGEN	31.642	1.736	2.391	3.096	2.674	2.839	2.845	1.845	2.725	2.284	3.018	3.772		29.229
RENAULT	15.617	451	602	983	1.442	1.466	1.333	761	864	1.189	1.483	1.929		12.503
PEUGEOT	8.212	467	284	471	835	532	1.183	463	819	472	761	831		7.118
MERCEDES-BENZ	8.457	360	549	925	671	684	760	253	485	553	651	1.075		6.966
CITROEN	6.511	207	213	752	670	398	690	477	592	528	636	711		5.874
FIAT	9.072	272	374	615	333	343	417	309	444	521	495	688		4.811
TOYOTA	2.928	34	178	514	402	549	378	310	549	543	518	722		4.697
DACIA	7.555	221	228	380	512	572	429	320	389	502	249	747		4.549
FORD	4.028	85	189	298	255	428	596	370	487	344	510	631		4.193
KIA	4.110	155	196	387	324	464	419	211	354	209	355	538		3.612
MITSUBISHI	3.897	324	151	312	329	220	385	244	352	240	168	322		3.047
HYUNDAI	1.612	71	117	138	163	186	158	153	240	176	214	231		1.847
IVECO	2.710	88	131	173	163	246	172	89	142	161	199	262		1.826
NISSAN	7	0	0	175	126	92	121	110	91	116	123	192		1.146
SUZU	333	57	34	90	25	23	32	73	53	24	96	14		521
SSANGYONG	303	3	5	16	19	31	38	10	22	17	49	36		246
TATA	228	9	0	0	0	0	0	0	0	0	0	0		9
TOPLAM	107.222	4.540	5.642	9.325	8.943	9.073	9.956	5.998	8.612	7.879	9.525	12.701	0	92.194