



OTOMOTİV SANAYİİ DERNEĞİ  
AUTOMOTIVE MANUFACTURERS ASSOCIATION

# AYLIK RAPOR

## Automotive Industry Monthly Report

Haziran / June 2017

- **Üretim/Production**
- **Satış/Sales**
- **İthalat/Imports**
- **İhracat/Exports**

OSD "OICA" Üyesidir



OSD is a Member of "OICA"

## 2017 Haziran Ayı Özeti / 2017 June Summary

		HAZİRAN / JUNE			6 AY/ 6 MONTHS			SON 12 AYLIK / YoY		
		2016	2017	2017/2016 (%)	2016	2017	2017/2016 (%)	2016	2017	2017/2016 (%)
<b>Üretim/Production</b>	<b>Toplam/Total</b>	131.268	141.161	8	725.941	869.158	20	1.417.145	1.629.144	15
	<b>Otomobil/P.Cars</b>	82.175	94.839	15	441.366	601.586	36	840.416	1.111.108	32
<b>Pazar/Market</b>	<b>Toplam/Total</b>	94.203	85.416	-9	450.997	410.609	-9	1.006.922	967.471	-4
	<b>Otomobil/P.Cars</b>	71.111	66.164	-7	338.482	305.924	-10	736.232	724.380	-2
<b>İthalat/Import</b>	<b>Toplam/Total</b>	64.795	53.269	-18	302.088	260.172	-14	664.617	639.394	-4
	<b>Otomobil/P.Cars</b>	54.270	44.241	-18	250.381	210.130	-16	544.986	524.794	-4
<b>İhracat/Export</b>	<b>Toplam/Total</b>	102.035	115.966	14	555.755	714.284	29	1.061.754	1.299.902	22
	<b>Otomobil/P.Cars</b>	64.973	79.544	22	340.623	504.466	48	641.449	909.552	42
<b>İhracat / Export (\$)</b>	<b>Toplam/Total **</b>	2.172.835.970	2.542.388.881	17	11.912.728.763	14.545.830.991	22	22.833.124.795	26.897.791.161	18
	<b>Otomobil/P.Cars</b>	714.466.099	1.030.590.463	44	3.570.508.353	6.099.316.500	71	6.898.621.371	10.868.577.540	58

PARAMETRELER / PARAMETERS		HAZİRAN / JUNE			6 AY/ 6 MONTHS			SON 12 AYLIK / YoY		
		2016	2017	2017/2016 (%)	2016	2017	2017/2016 (%)	2016	2017	2017/2016 (%)
<b>ÜFE/PPI</b>		0,41	0,07	**	3,19	7,82	**	4,91	9,98	**
<b>TÜFE/CPI</b>		0,47	-0,27	**	3,63	5,89	**	7,74	9,36	**
<b>Sanayi Endeksi/Industry Index</b>		0,29	0,05	**	4,12	8,23	**	5,77	11,64	**
<b>\$ (*)</b>		2,9148	3,5187	21	2,8980	3,6033	24	2,8847	3,3579	16
<b>EURO (*)</b>		3,2464	3,9865	23	3,2228	3,9072	21	3,1907	3,6609	15
<b>Japon Yeni (*)</b>		2,7308	3,1405	15	2,5684	3,1842	24	2,4592	3,0520	24

(\* ) Ortalama Değerler / Average Values

(\*\* ) Toplam Sanayi / Total Industry Including Components

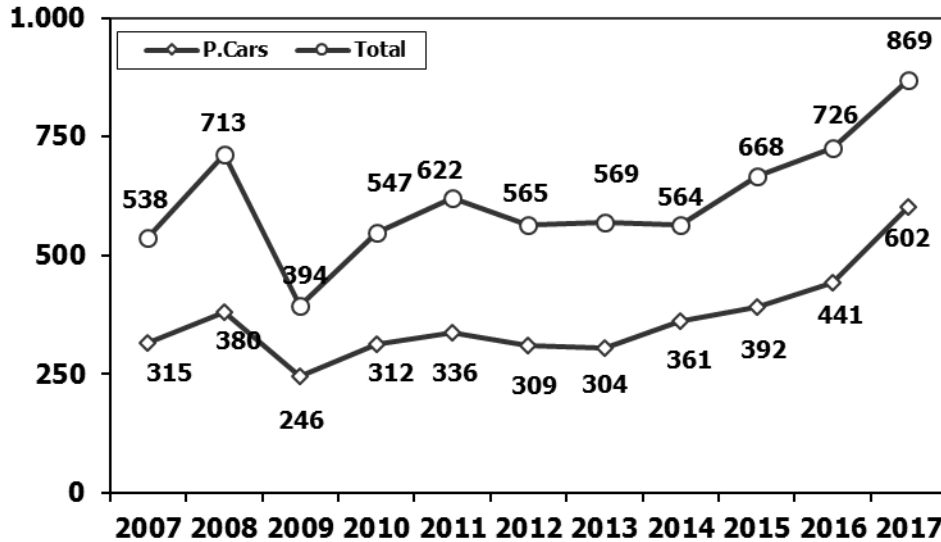
*Raporda yer alan üretim adetleri yalnızca OSD üyelerinin verilerini göstermektedir.  
Production units in this report only show the data of OSD members.*

K.KAMYON : AYA 3.5-12 Ton (L.Truck:GVW 3.5-12 Ton)

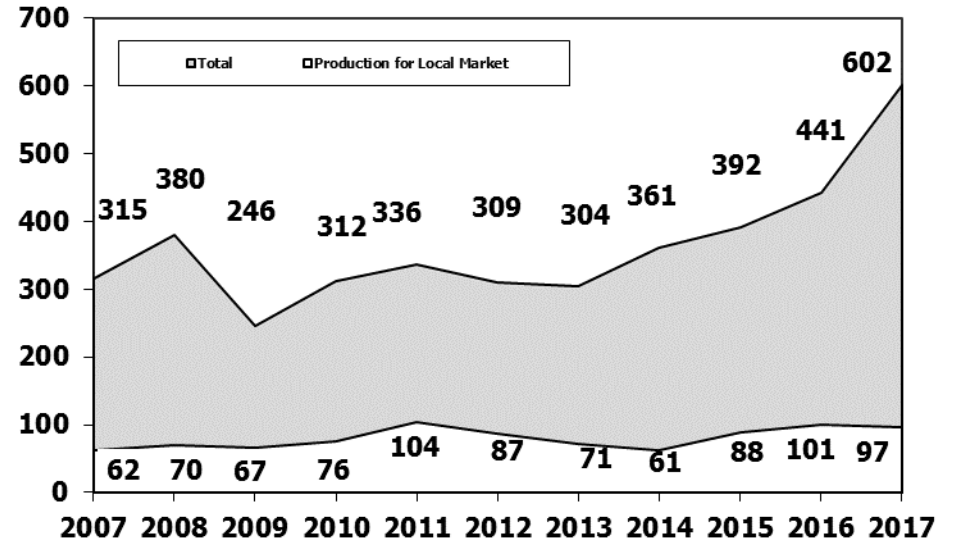
B.KAMYON : AYA 12 Ton'dan Büyük (M.Truck:GVW 12 Ton And Up)

ARAÇ TİPLERİ	HAZİRAN AYI ÜRETİMİ June Production		6 AYLIK ÜRETİM 6 Months Production		DEĞİŞİM % Percent Change %	
	2016	2017	2016	2017	HAZİRAN June	6 AY 6 Months
<b>OTOMOBİL - Pass.Car</b>	<b>82.175</b>	<b>94.839</b>	<b>441.366</b>	<b>601.586</b>	<b>15</b>	<b>36</b>
<b>TİCARİ ARAÇLAR - Commercial Vehicles</b>	<b>49.093</b>	<b>46.322</b>	<b>284.575</b>	<b>267.572</b>	<b>-6</b>	<b>-6</b>
* B. KAMYON - H. Truck	1.718	1.716	7.846	8.517	0	9
* K. KAMYON - L. Truck	314	289	1.092	1.648	-8	51
* KAMYONET - Pick Up	39.608	38.198	250.787	224.152	-4	-11
* OTOBÜS - Bus	814	720	4.425	4.591	-12	4
* MİNİBÜS - Minibus	6.310	5.214	18.789	27.209	-17	45
* MİDİBÜS - Midibus	329	185	1.636	1.455	-44	-11
<b>TAŞIT ARAÇLARI TOPLAM - MV Total</b>	<b>131.268</b>	<b>141.161</b>	<b>725.941</b>	<b>869.158</b>	<b>8</b>	<b>20</b>
<b>TRAKTÖR - F.Tractor</b>	<b>5.333</b>	<b>4.523</b>	<b>29.979</b>	<b>25.095</b>	<b>-15</b>	<b>-16</b>
<b>GENEL TOPLAM - Grand Total</b>	<b>136.601</b>	<b>145.684</b>	<b>755.920</b>	<b>894.253</b>	<b>7</b>	<b>18</b>

**Toplam Üretim ve Otomobil Üretimi** (x1000) (Ocak-Haziran)  
Total & P.Cars Production (x1000) (January-June)

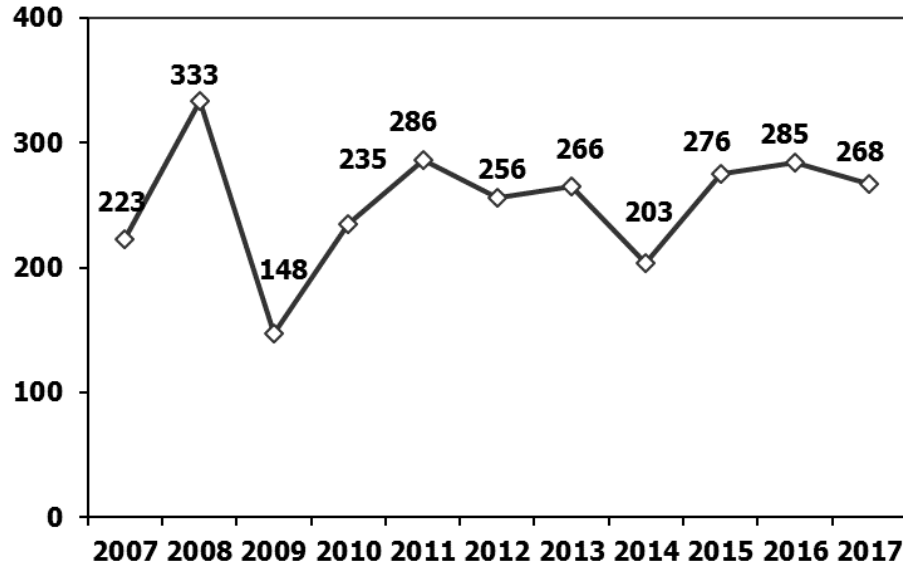


**Otomobil Üretimi ve İhracat** (x1000) (Ocak-Haziran)  
P.Cars Production & Exports (x1000) (January-June)



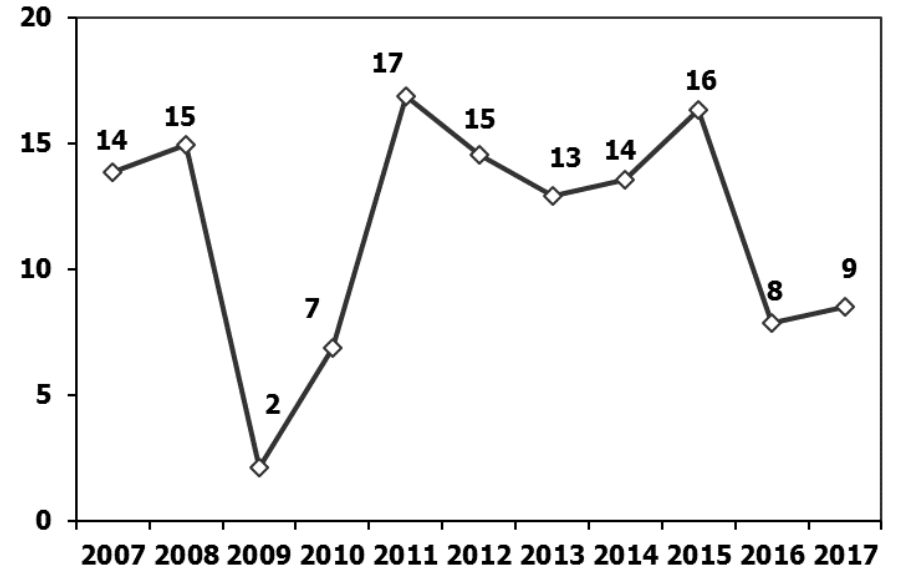
### **Ticari Araç Üretimi** (x1000) (Ocak-Haziran)

Commercial Vehicle Production (x1000) (January-June)



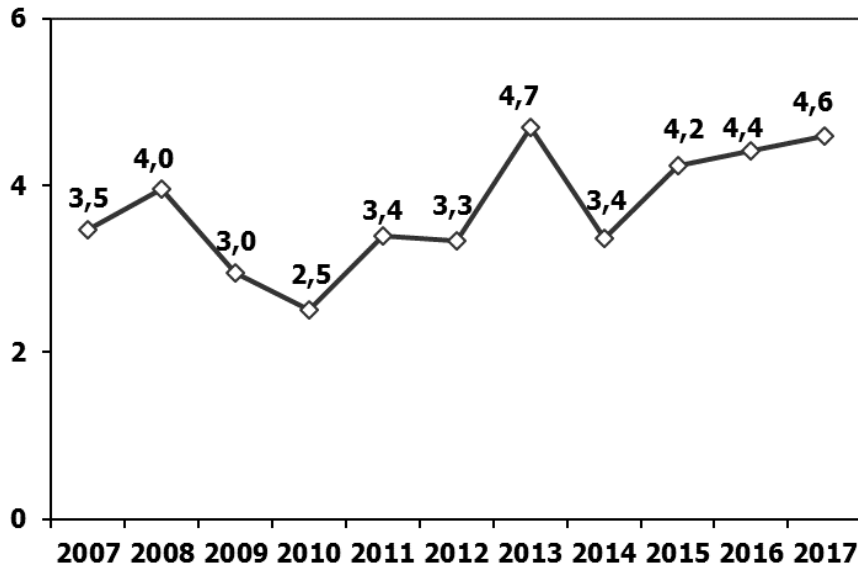
### (AYA >12 Ton) **Büyük Kamyon Üretimi** (x1000) (Ocak-Haziran)

(GVW >12 Ton) Heavy Truck Production (x1000) (January-June)



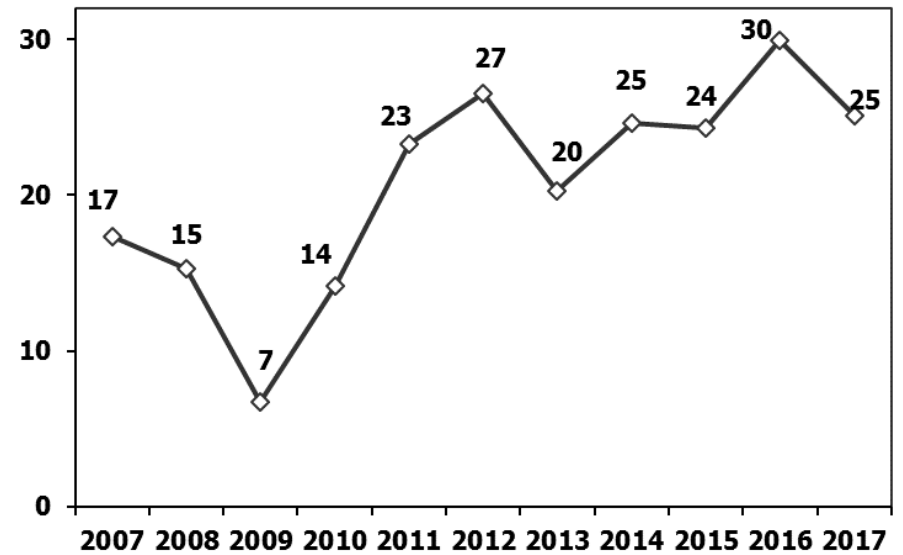
### **Otobüs Üretimi** (x1000) (Ocak-Haziran)

Bus Production (x1000) (January-June)



### **Traktör Üretimi** (x1000) (Ocak-Haziran)

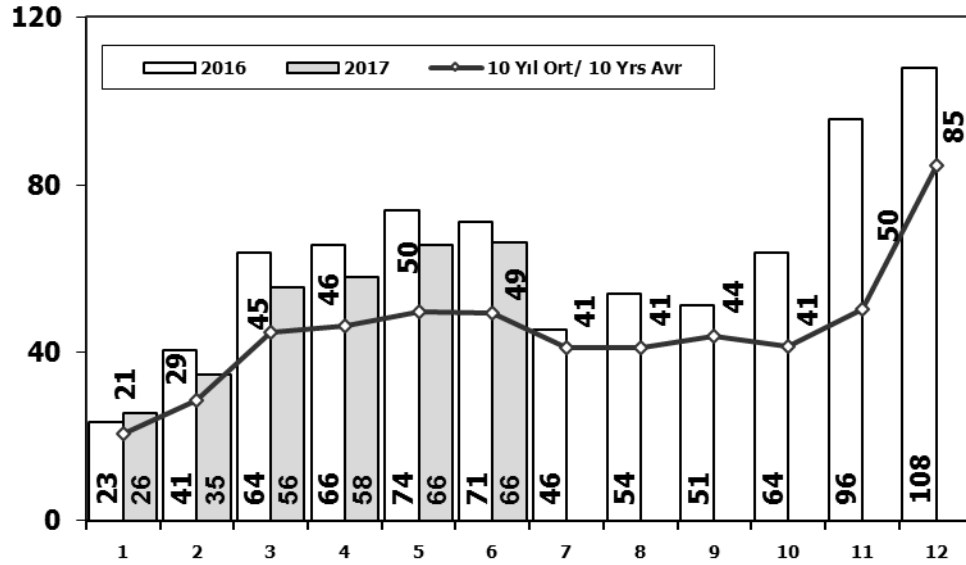
F. Tractor Production (x1000) (January-June)





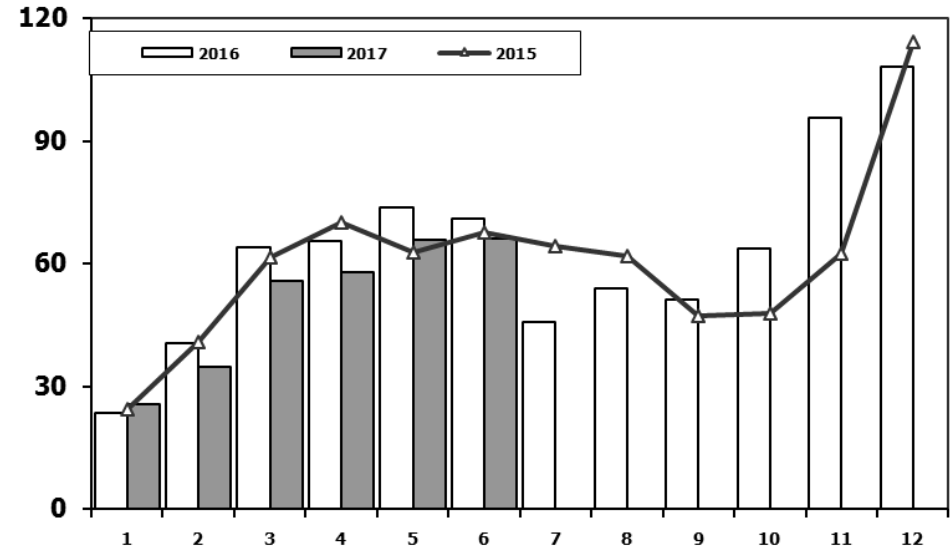
## Otomobil Pazarının Analizi (x1000)

### P.Cars Market Analysis (x1000)



## Otomobil Pazarı (x1000)

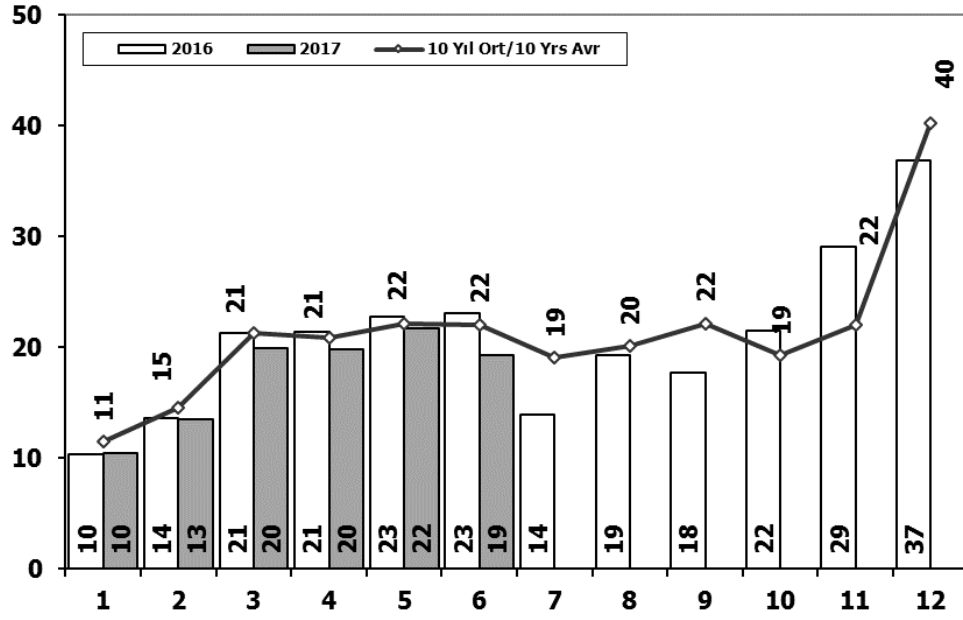
### P.Cars Market (x1000)



Aylar / Months	10 Yil Ort. 10 Yrs Avr. (x1000)	2017 (x1000)	%	1	2	3	4	5	6	7	8	9	10	11	12	6 Ay/Mo	Total
1	20,7	25,7	24,4	13.186	17.212	24.336	25.204	29.067	30.126	28.246	28.469	27.662	32.569	39.643	61.745	139.131	357.465
2	28,7	34,7	20,7	18.588	21.196	34.147	30.313	31.477	28.724	25.530	26.102	27.053	19.788	17.201	25.879	164.445	305.998
3	45,0	55,6	23,7	13.173	14.492	40.622	36.202	44.188	41.019	16.637	22.537	52.162	13.828	17.781	57.178	189.696	369.819
4	46,3	58,0	25,2	12.594	20.651	33.958	36.549	40.467	42.086	41.399	42.222	42.477	47.859	50.061	99.461	186.305	509.784
5	49,7	65,8	32,3	29.868	39.004	54.023	53.835	56.302	56.714	43.518	38.875	39.964	47.508	44.951	88.957	289.746	593.519
6	49,4	66,2	33,9	21.077	29.189	47.270	45.645	50.460	50.849	44.531	41.236	49.360	43.440	52.297	80.926	244.490	556.280
Total	239,8	305,9	27,6	25.835	36.814	51.785	56.999	62.383	58.290	55.712	51.611	52.925	46.985	64.117	101.199	292.106	664.655
				24.368	27.167	37.812	42.769	46.379	47.278	46.602	45.131	49.262	50.814	59.695	110.054	225.773	587.331
				24.498	40.817	61.676	70.211	62.878	67.766	64.218	61.753	47.088	47.954	62.397	114.340	327.846	725.596
				23.358	40.588	63.975	65.618	73.832	71.111	45.566	53.977	51.340	63.746	95.783	108.044	338.482	756.938
				25.689	34.658	55.616	57.998	65.799	66.164							305.924	305.924

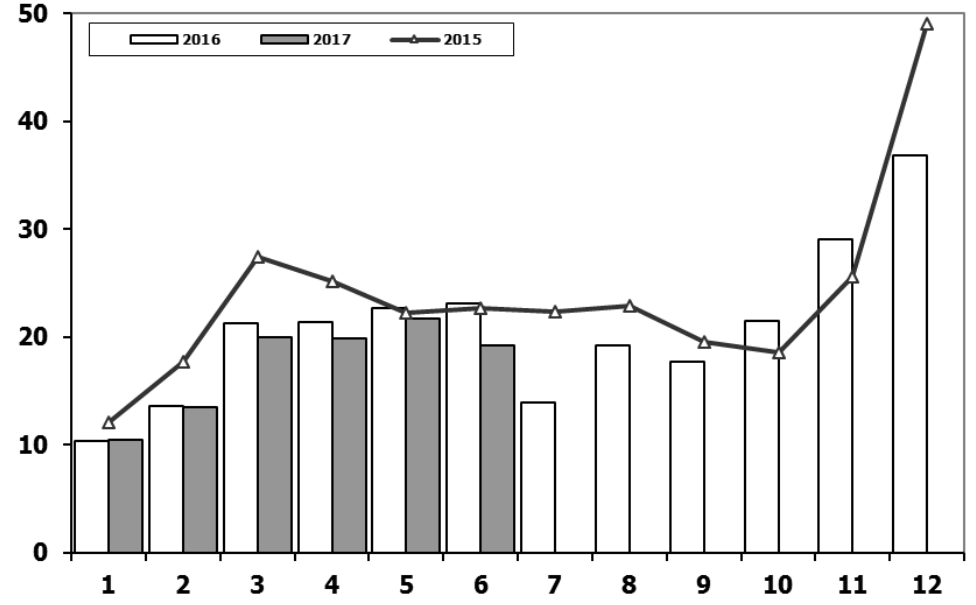
## Ticari Araç Pazarının Analizi (x1000)

### CV Market Analysis (x1000)



## Ticari Araç Pazarı (x1000)

### CV Total Market (x1000)

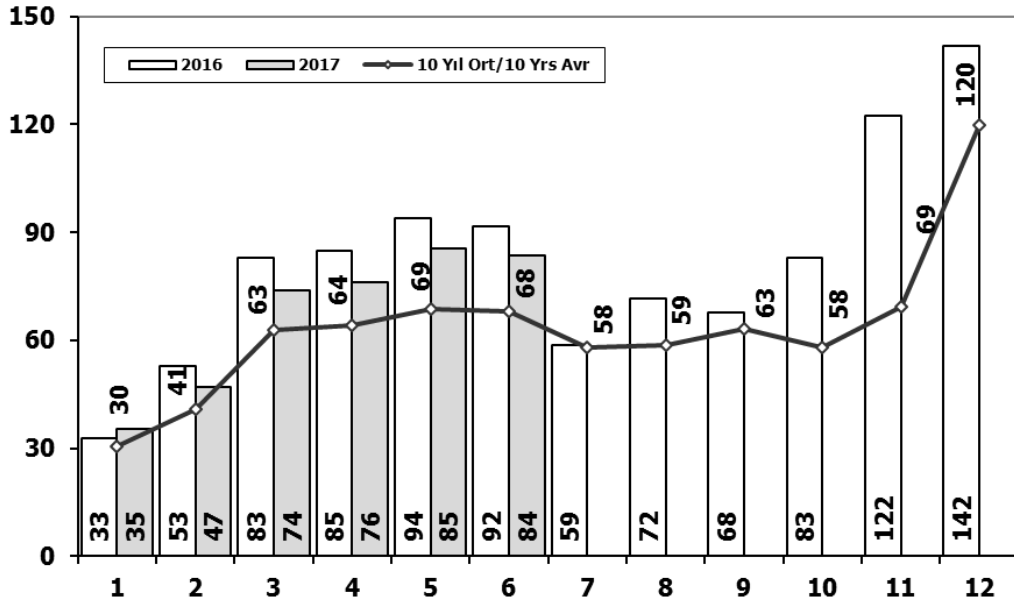


	1	2	3	4	5	6	7	8	9	10	11	12	6 Ay/Mo	Total
<b>2007</b>	11.764	14.490	21.152	20.429	22.188	21.535	21.871	25.702	22.416	23.489	27.374	44.331	111.558	276.741
<b>2008</b>	15.204	16.925	22.667	20.654	20.150	20.669	19.162	20.490	19.776	15.359	10.951	18.539	116.269	220.546
<b>2009</b>	7.458	8.354	15.909	18.224	20.699	22.083	13.609	14.555	31.241	8.289	11.421	34.208	92.727	206.050
<b>2010</b>	8.456	11.662	19.870	20.530	21.161	21.304	22.319	22.423	24.124	28.921	27.345	55.273	102.983	283.388
<b>2011</b>	17.790	23.344	29.310	28.236	28.791	29.149	21.846	22.503	23.679	25.132	22.244	45.324	156.620	317.348
<b>2012</b>	10.142	14.638	21.687	20.369	24.360	23.932	20.591	19.612	23.837	19.237	22.748	40.187	115.128	261.340
<b>2013</b>	11.305	14.117	20.903	20.016	23.038	19.481	19.014	15.772	18.112	13.414	18.900	34.397	108.860	228.469
<b>2014</b>	9.857	10.141	13.152	13.997	15.530	16.674	15.604	17.708	20.918	18.445	24.242	43.887	79.351	220.155
<b>2015</b>	12.078	17.716	27.445	25.220	22.267	22.697	22.407	22.930	19.534	18.566	25.646	49.092	127.423	285.598
<b>2016</b>	10.382	13.635	21.239	21.423	22.744	23.092	13.939	19.292	17.728	21.505	29.056	36.884	112.515	250.919
<b>2017</b>	10.457	13.483	19.965	19.851	21.677	19.252							104.685	104.685

Aylar / Months	10 Yil Ort. 10 Yrs Avr. (x1000)	2017 (x1000)	%
1	11,4	10,5	-8,6
2	14,5	13,5	-7,0
3	21,3	20,0	-6,4
4	20,9	19,9	-5,1
5	22,1	21,7	-1,9
6	22,1	19,3	-12,7
<b>Total</b>	<b>112,3</b>	<b>104,7</b>	<b>-6,8</b>

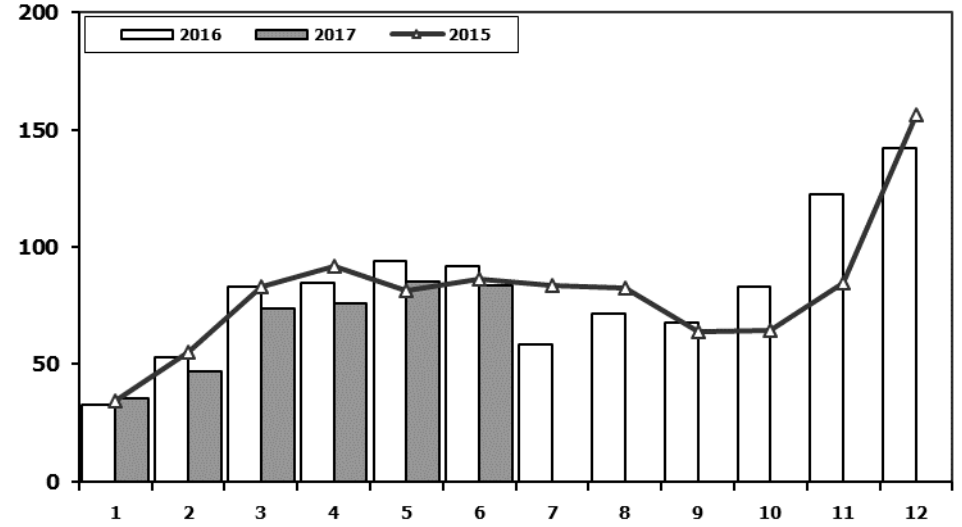
## Hafif Araç Pazarının Analizi (x1000)

### LV Market Analysis (x1000)



## Hafif Araç Pazarı (x1000)

### LV Total Market (x1000)



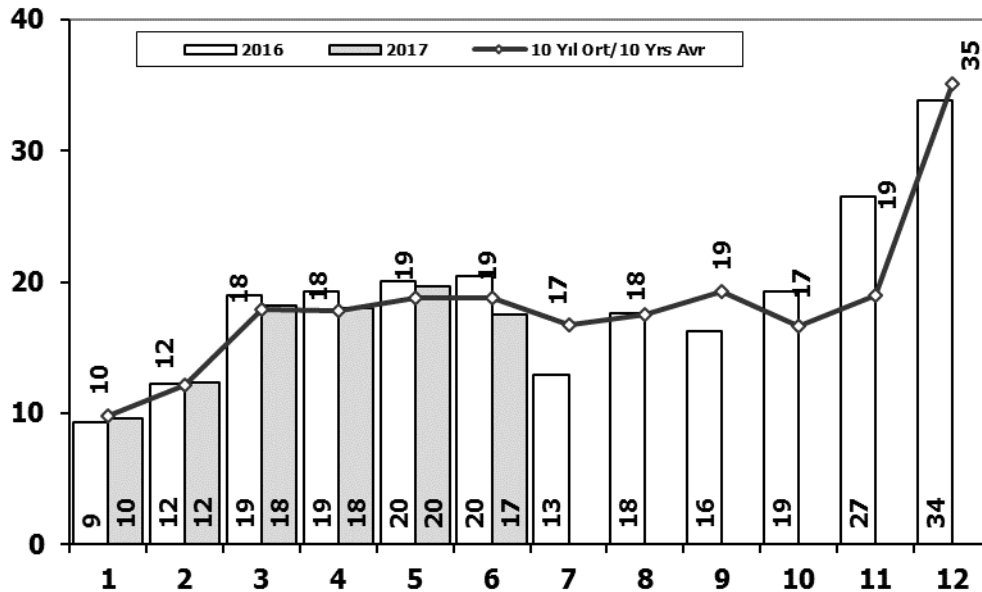
Aylar / Months	10 Yıl Ort. 10 Yrs Avr. (x1000)	2017 (x1000)	%
1	30,4	35,3	16,1
2	40,9	47,0	14,9
3	62,8	73,8	17,5
4	64,2	76,0	18,4
5	68,6	85,4	24,6
6	68,2	83,7	22,7
<b>Total</b>	<b>335,0</b>	<b>401,2</b>	<b>19,7</b>

	1	2	3	4	5	6	7	8	9	10	11	12	6 Ay/Mo	Total
<b>2007</b>	23.117	29.184	41.890	42.366	47.938	48.674	47.490	50.558	46.581	52.725	63.313	100.926	233.169	594.762
<b>2008</b>	31.527	35.251	53.649	47.701	48.598	46.324	42.156	43.670	43.932	32.884	26.253	42.078	263.050	494.023
<b>2009</b>	19.606	21.742	55.111	52.640	63.191	61.067	28.845	35.609	81.397	21.033	27.962	88.923	273.357	557.126
<b>2010</b>	20.095	31.172	51.769	54.946	59.377	60.896	61.345	61.764	63.814	73.404	73.962	148.369	278.255	760.913
<b>2011</b>	44.892	58.663	78.403	77.695	80.646	81.573	63.044	58.406	60.129	69.421	63.657	127.910	421.872	864.439
<b>2012</b>	29.545	41.324	64.884	62.949	70.863	71.067	62.304	58.148	69.629	59.938	71.710	115.400	340.632	777.761
<b>2013</b>	35.523	48.307	68.774	73.575	81.468	74.096	71.596	65.043	67.963	58.014	79.301	129.718	381.743	853.378
<b>2014</b>	32.670	35.021	47.581	53.305	58.121	60.163	59.907	60.199	66.531	66.573	80.621	146.989	286.861	767.681
<b>2015</b>	34.615	55.331	83.302	91.602	81.542	86.158	83.836	82.577	64.025	64.255	84.601	156.173	432.550	968.017
<b>2016</b>	32.713	52.825	82.948	84.887	93.904	91.540	58.533	71.556	67.593	83.000	122.309	141.912	438.817	983.720
<b>2017</b>	35.323	46.965	73.802	75.988	85.422	83.658							401.158	401.158



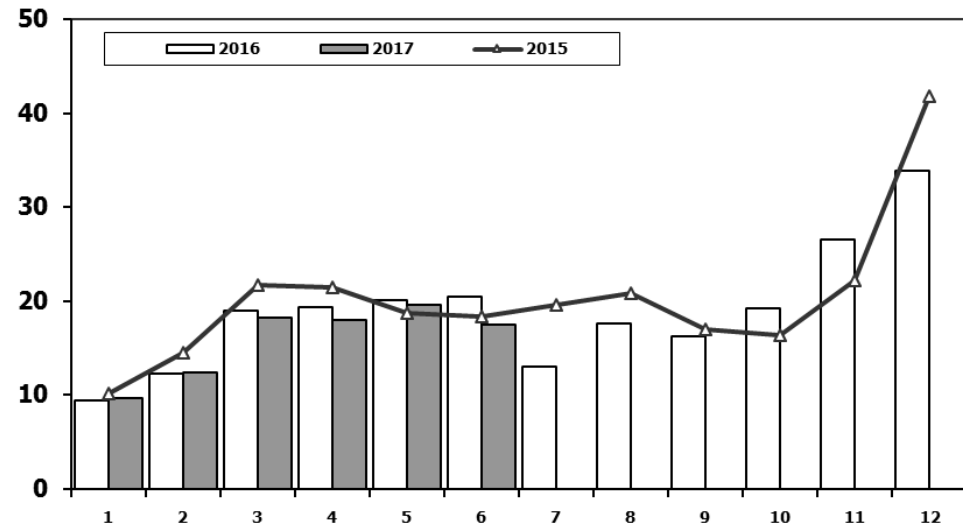
## Hafif Ticari Araç Pazarının Analizi (x1000)

LCV Market Analysis (x1000)



## Hafif Ticari Araç Pazarı (x1000)

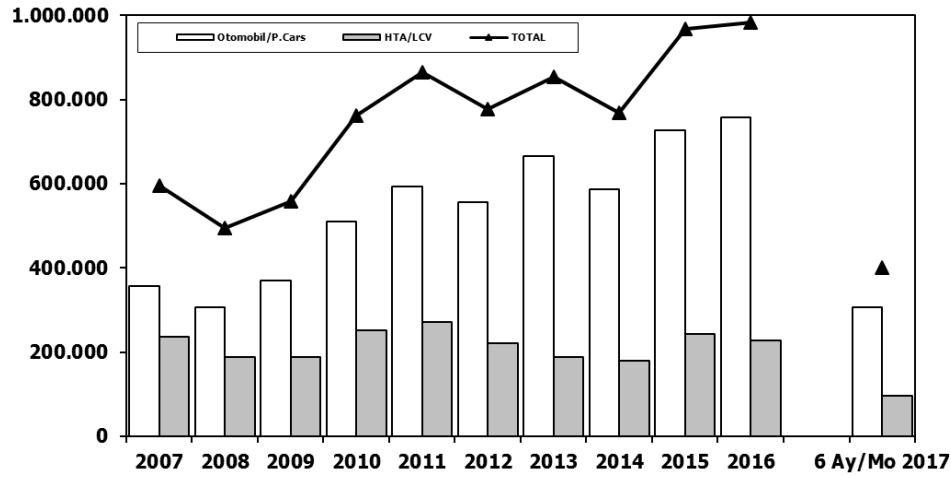
LCV Total Market (x1000)



Aylar / Months	10 Yıl Ort. 10 Yrs Avr. (x1000)	2017 (x1000)	%													6 Ay/Mo	Total	
				1	2	3	4	5	6	7	8	9	10	11	12			
				2007	9.931	11.972	17.554	17.162	18.871	18.548	19.244	22.089	18.919	20.156	23.670	39.181	94.038	237.297
				2008	12.939	14.055	19.502	17.388	17.121	17.600	16.626	17.568	16.879	13.096	9.052	16.199	98.605	188.025
				2009	6.433	7.250	14.489	16.438	19.003	20.048	12.208	13.072	29.235	7.205	10.181	31.745	83.661	187.307
1	9,8	9,6	-1,5	2010	7.501	10.521	17.811	18.397	18.910	18.810	19.946	19.542	21.337	25.545	23.901	48.908	91.950	251.129
2	12,2	12,3	1,1	2011	15.024	19.659	24.380	23.860	24.344	24.859	19.526	19.531	20.165	21.913	18.706	38.953	132.126	270.920
3	17,9	18,2	1,8	2012	8.468	12.135	17.614	17.304	20.403	20.218	17.773	16.912	20.269	16.498	19.413	34.474	96.142	221.481
4	17,8	18,0	0,9	2013	9.688	11.493	16.989	16.576	19.085	15.806	15.884	13.432	15.038	11.029	15.184	28.519	89.637	188.723
5	18,8	19,6	4,3	2014	8.302	7.854	9.769	10.536	11.742	12.885	13.305	15.068	17.269	15.759	20.926	36.935	61.088	180.350
6	18,8	17,5	-6,7	2015	10.117	14.514	21.626	21.391	18.664	18.392	19.618	20.824	16.937	16.301	22.204	41.833	104.704	242.421
<b>Total</b>	<b>95,2</b>	<b>95,2</b>	<b>0,0</b>	2016	9.355	12.237	18.973	19.269	20.072	20.429	12.967	17.579	16.253	19.254	26.526	33.868	100.335	226.782
				2017	9.634	12.307	18.186	17.990	19.623	17.494							95.234	95.234

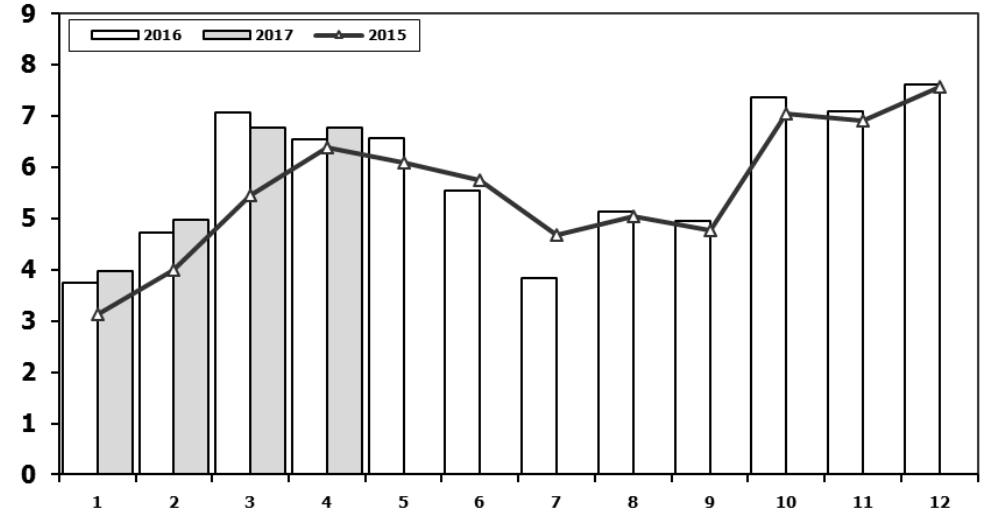
## Hafif Araç Pazarı (AYA < 3.5 Ton)

### Light Vehicle Market (GVW < 3.5 Ton)



## Traktör Pazarı (x1000)

### F.Tractor Market (x1000)



	2007	2008	2009	2010	2011	2012	2013	2014	2015	2016	6 Ay/Mo 2017
<b>Otomobil/P.Cars</b>	357.465	305.998	369.819	509.784	593.519	556.280	664.655	587.331	725.596	756.938	305.924
<b>HTA/LCV</b>	237.297	188.025	187.307	251.129	270.920	221.481	188.723	180.350	242.421	226.782	95.234
<b>TOTAL</b>	594.762	494.023	557.126	760.913	864.439	777.761	853.378	767.681	968.017	983.720	401.158
<b>HTA/LCV (%)</b>	40	38	34	33	31	28	22	23	25	23	24

	1	2	3	4	5	6	7	8	9	10	11	12	4 Ay/Mo	Total
<b>2007</b>	2.816	2.244	3.053	2.657	3.188	3.141	2.497	2.381	3.025	2.755	3.549	3.097	10.770	34.403
<b>2008</b>	2.770	1.855	3.395	3.081	2.769	2.400	2.232	2.485	1.856	1.773	1.305	1.101	11.101	27.022
<b>2009</b>	717	572	688	1.070	1.297	1.256	1.054	1.183	1.117	1.356	1.304	2.144	3.047	13.758
<b>2010</b>	1.111	1.991	2.330	3.039	2.567	2.638	1.965	3.019	2.806	4.424	3.978	6.168	8.471	36.036
<b>2011</b>	2.975	5.242	5.927	5.358	6.016	6.335	4.534	4.051	4.140	5.828	4.943	4.992	19.502	60.341
<b>2012</b>	2.362	1.983	4.348	6.579	6.273	4.569	3.837	3.158	3.618	4.027	4.807	4.757	15.272	50.318
<b>2013</b>	2.161	2.432	4.005	4.585	5.616	3.136	4.574	3.408	4.935	4.762	5.781	6.891	13.183	52.286
<b>2014</b>	2.169	3.512	4.476	4.905	5.094	5.028	4.233	4.920	5.619	5.743	6.250	7.409	15.062	59.358
<b>2015</b>	3.124	3.984	5.460	6.383	6.078	5.748	4.677	5.044	4.765	7.049	6.898	7.564	18.951	66.774
<b>2016</b>	3.739	4.731	7.067	6.546	6.575	5.543	3.833	5.134	4.945	7.372	7.090	7.603	22.083	70.178
<b>2017</b>	3.974	4.964	6.773	6.780									22.491	22.491

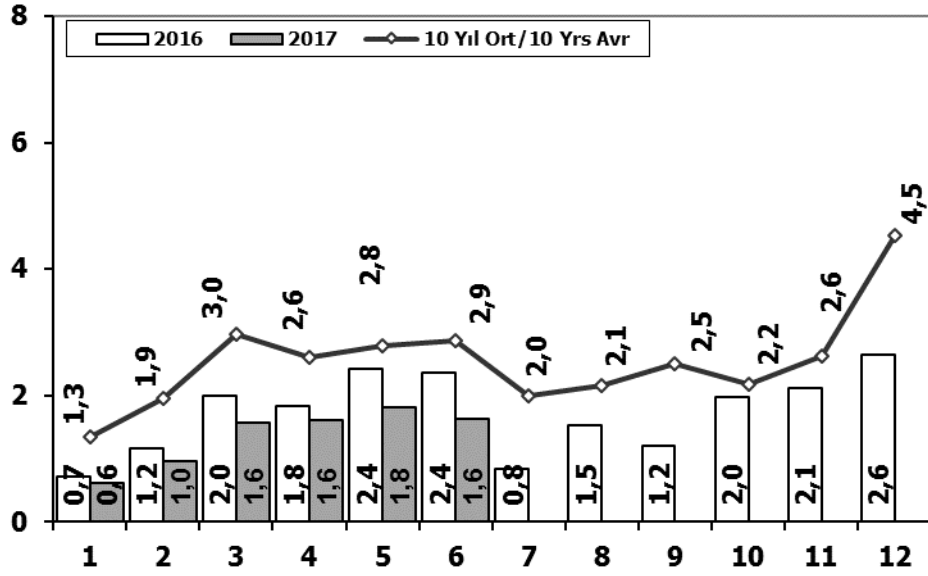
Kaynak: TÜİK trafik kayıtları.

Rakamlar, son iki model yılına ait traktör tescillerinden oluşmaktadır.

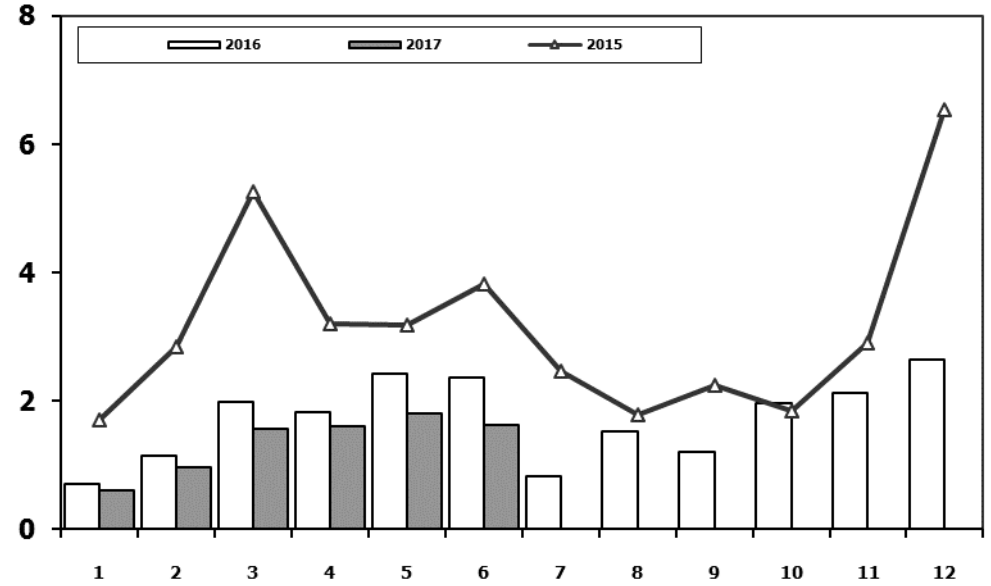
Source: Turkish Statistical Institute – Traffic registrations

Data represents the last two model year's farm tractors registration figures

## Kamyon Pazarının Analizi (x1000) AYA > 5 Ton Truck Market Analysis (x1000) GVW > 5 Ton



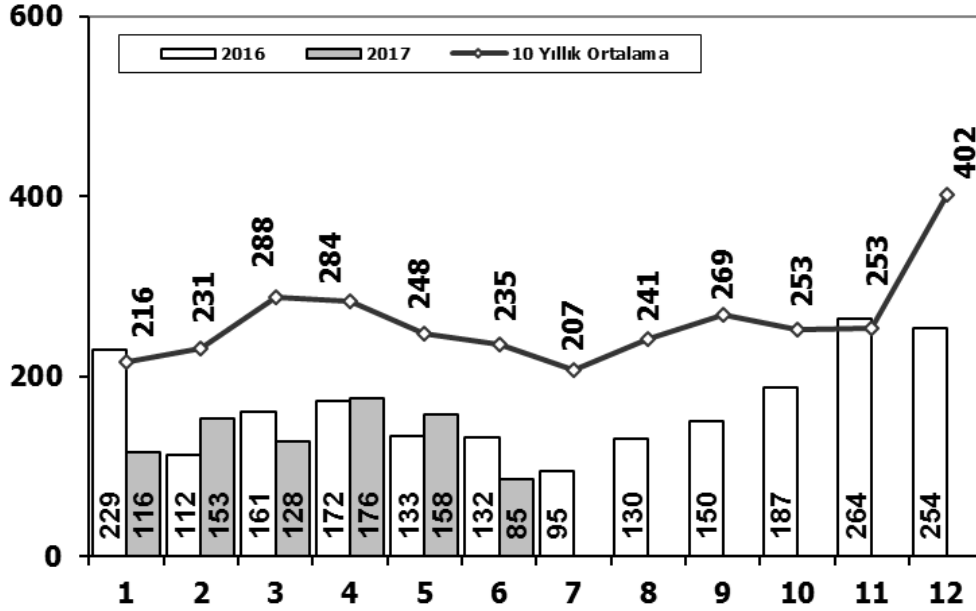
## Kamyon Pazarı (x1000) AYA > 5 Ton Truck Market (x1000) GVW > 5 Ton



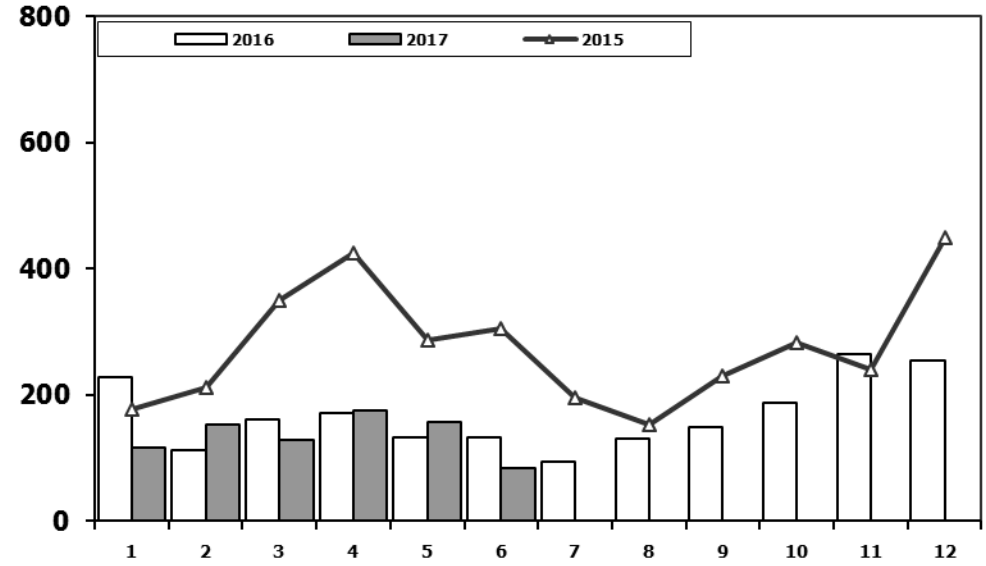
Aylar / Months	10 Yil Ort. 10 Yrs Avr. (x1000)	2017 (x100)	%
1	1,3	0,6	-54,8
2	1,9	1,0	-50,4
3	3,0	1,6	-47,1
4	2,6	1,6	-38,0
5	2,8	1,8	-35,3
6	2,9	1,6	-43,3
<b>Total</b>	<b>14,5</b>	<b>8,2</b>	<b>-43,6</b>

	1	2	3	4	5	6	7	8	9	10	11	12	6 Ay/Mo	Total
<b>2007</b>	1.554	2.055	3.065	2.940	2.865	2.613	2.372	3.145	2.988	2.886	3.258	4.444	15.092	34.185
<b>2008</b>	1.797	2.309	2.621	2.578	2.459	2.526	2.067	2.377	2.390	1.790	1.512	1.834	14.290	26.260
<b>2009</b>	771	759	1.034	1.342	1.355	1.651	1.156	1.205	1.780	866	981	2.015	6.912	14.915
<b>2010</b>	777	968	1.772	1.807	1.966	2.205	2.093	2.446	2.444	3.071	3.136	5.677	9.495	28.362
<b>2011</b>	2.552	3.292	4.418	3.754	3.803	3.749	1.996	2.478	3.081	2.774	3.108	5.787	21.568	40.792
<b>2012</b>	1.375	2.159	3.595	2.697	3.321	3.250	2.450	2.277	2.991	2.244	3.006	5.000	16.397	34.365
<b>2013</b>	1.077	1.931	3.127	2.720	3.145	2.951	2.411	1.845	2.554	1.801	3.173	5.025	14.951	31.760
<b>2014</b>	1.117	1.949	2.818	3.092	3.405	3.438	2.083	2.390	3.281	2.494	3.028	6.313	15.819	35.408
<b>2015</b>	1.705	2.841	5.270	3.208	3.190	3.824	2.463	1.798	2.244	1.848	2.902	6.540	20.038	37.833
<b>2016</b>	718	1.154	1.984	1.835	2.420	2.358	830	1.529	1.204	1.962	2.123	2.640	10.469	20.757
<b>2017</b>	607	964	1.570	1.611	1.807	1.621							8.180	8.180

## Midibüs Pazarının Analizi (7-9 mt / 25-35 Kişilik) Midibus Market Analysis (7-9 mt / 25-35 Passengers)



## Midibüs Pazarı (7-9 mt / 25-35 Kişilik Midibüs) Midibus Market (7-9 mt / 25-35 Passengers)

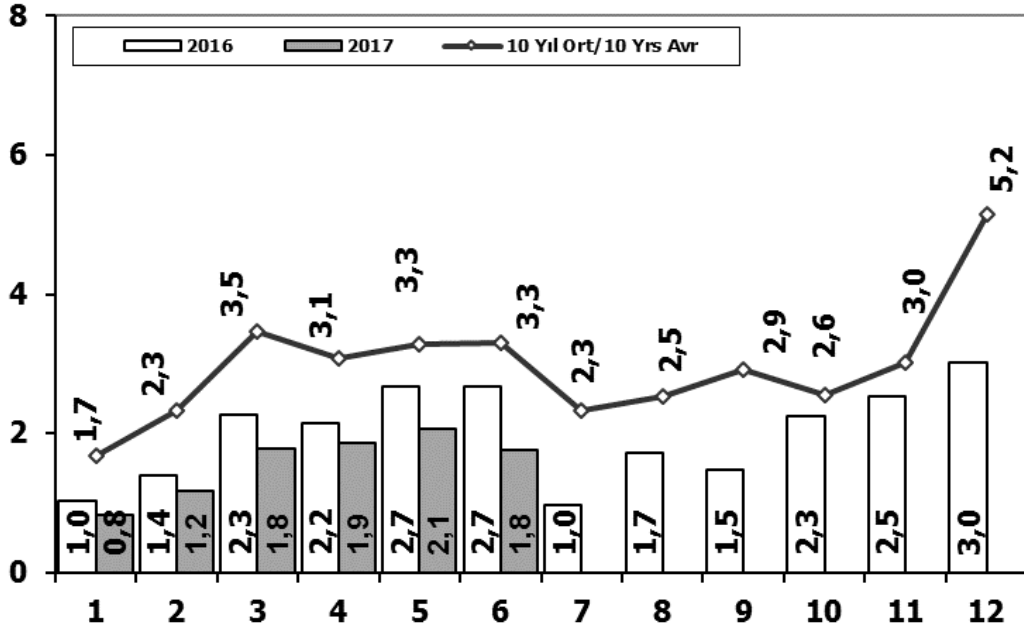


Aylar / Months	10 Yıl Ort. / 10 Yrs Avr.	2017	%	1	2	3	4	5	6	7	8	9	10	11	12	6 Ay/Mo	Total
				207	272	404	238	302	283	164	365	399	279	283	465	1.706	3.661
				391	476	436	512	419	331	368	380	341	352	246	270	2.565	4.522
				154	124	160	220	174	198	160	175	168	143	206	323	1.030	2.205
1	216	116	-46	155	131	185	167	140	138	129	246	236	206	202	437	916	2.372
2	231	153	-34	138	195	294	316	280	258	211	305	301	276	260	270	1.481	3.104
3	288	128	-56	179	257	277	229	257	239	216	249	325	269	189	398	1.438	3.084
4	284	176	-38	191	268	289	276	283	241	367	235	305	392	415	697	1.548	3.959
5	248	158	-36	335	265	326	280	206	223	161	174	229	140	226	454	1.635	3.019
6	235	85	-64	177	213	350	425	288	306	195	154	231	283	240	450	1.759	3.312
<b>Total</b>	<b>1.502</b>	<b>816</b>	<b>-46</b>	229	112	161	172	133	132	95	130	150	187	264	254	939	2.019
				207	153	128	176	158	85							816	816



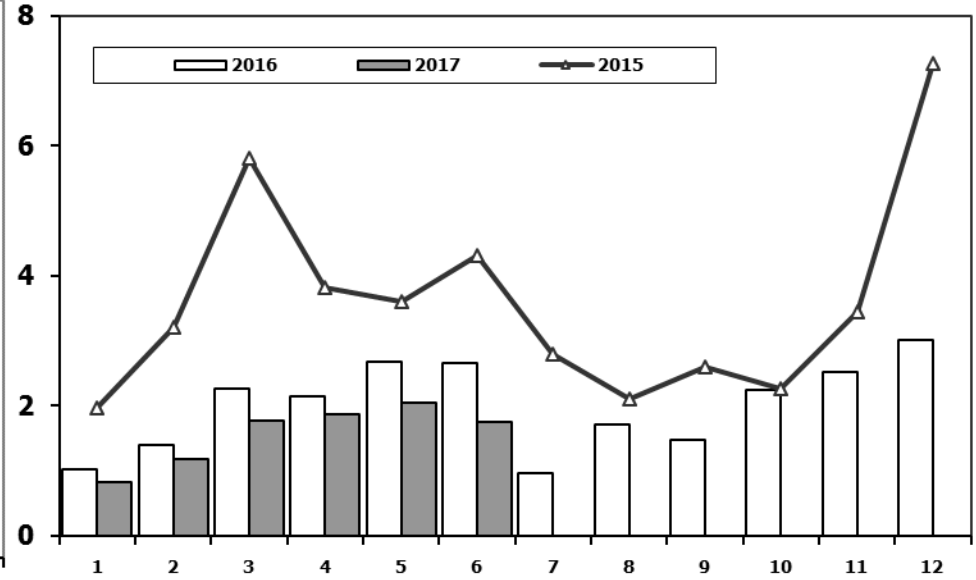
## Ağır Ticari Araç Pazarının Analizi (x1000)

### HCV Market Analysis (x1000)



## Ağır Ticari Araç Pazarı (x1000)

### HCV Market (x1000)

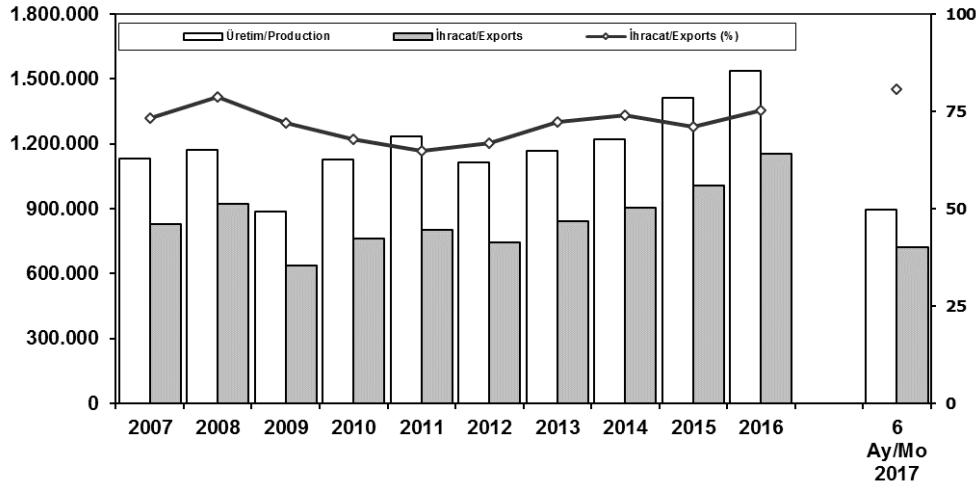


Aylar / Months	10 Yil Ort. 10 Yrs Avr. (x1000)	2017 (x1000)	%
1	1,7	0,8	-50,7
2	2,3	1,2	-49,6
3	3,5	1,8	-48,6
4	3,1	1,9	-39,5
5	3,3	2,1	-37,2
6	3,3	1,8	-46,8
<b>Total</b>	<b>17,1</b>	<b>9,5</b>	<b>-44,8</b>

	1	2	3	4	5	6	7	8	9	10	11	12	6 Ay/Mo	Total
<b>2007</b>	1.833	2.518	3.598	3.267	3.317	2.987	2.627	3.613	3.497	3.333	3.704	5.150	17.520	39.444
<b>2008</b>	2.265	2.870	3.165	3.266	3.029	3.069	2.536	2.922	2.897	2.263	1.899	2.340	17.664	32.521
<b>2009</b>	1.025	1.104	1.420	1.786	1.696	2.035	1.401	1.483	2.006	1.084	1.240	2.463	9.066	18.743
<b>2010</b>	955	1.141	2.059	2.133	2.251	2.494	2.373	2.881	2.787	3.376	3.444	6.365	11.033	32.259
<b>2011</b>	2.766	3.685	4.930	4.376	4.447	4.290	2.320	2.972	3.514	3.219	3.538	6.371	24.494	46.428
<b>2012</b>	1.674	2.503	4.073	3.065	3.957	3.714	2.818	2.700	3.568	2.739	3.335	5.713	18.986	39.859
<b>2013</b>	1.617	2.624	3.914	3.440	3.953	3.675	3.130	2.340	3.074	2.385	3.716	5.878	19.223	39.746
<b>2014</b>	1.555	2.287	3.383	3.461	3.788	3.789	2.299	2.640	3.649	2.686	3.316	6.952	18.263	39.805
<b>2015</b>	1.961	3.202	5.819	3.829	3.603	4.305	2.789	2.106	2.597	2.265	3.442	7.259	22.719	43.177
<b>2016</b>	1.027	1.398	2.266	2.154	2.672	2.663	972	1.713	1.475	2.251	2.530	3.016	12.180	24.137
<b>2017</b>	823	1.176	1.779	1.861	2.054	1.758							9.451	9.451

## İhracat/Üretim (2007-2017) (Traktör dahil)

Exports/Production (2007-2017) (Including F.Tractor)



## Taşıt Araçları İhracatı (2015-2017)

Motor Vehicle Exports (2015-2017)

SEKTÖR/SECTOR	2015	2016	2016	2017	2017/2016 (%)
			6 Ay-6 Mo		
OTOMOBİL / P.Cars	604.683	745.709	340.623	504.466	48
TİCARİ ARAÇLAR / CV	387.652	395.673	215.132	209.818	-2
*Kamyonet/Pick-Up	341.834	347.949	195.436	178.819	-9
*Minibüs/Minibus	38.255	34.790	13.556	23.418	73
*Kamyon/Truck	1.408	5.521	2.291	3.739	63
*Midibüs/Midibus	447	915	386	306	-21
*Otobüs/Bus	5.708	6.498	3.463	3.536	2
<b>TAŞIT ARAÇLARI /MV TOTAL</b>	<b>992.335</b>	<b>1.141.382</b>	<b>555.755</b>	<b>714.284</b>	<b>29</b>
<b>TRAKTÖR/F.TRACTOR</b>	<b>14.932</b>	<b>13.651</b>	<b>7.531</b>	<b>6.624</b>	<b>-12</b>
<b>TOTAL</b>	<b>1.007.267</b>	<b>1.155.033</b>	<b>563.286</b>	<b>720.908</b>	<b>28</b>

	2007	2008	2009	2010	2011	2012	2013	2014	2015	2016	6 Ay/Mo 2017
Üretim/Production	1.132.951	1.171.917	884.466	1.124.982	1.234.637	1.115.233	1.166.043	1.218.848	1.410.034	1.536.673	894.253
İhracat/Exports	829.879	920.763	637.855	763.670	801.112	745.354	843.467	902.194	1.007.267	1.155.033	720.908
İhracat/Exports (%)	73	79	72	68	65	67	72	74	71	75	81

## Otomotiv Ana ve Yan Sanayii İhracatı (ABD \$)

CBU and CKD Exports - \$

Sektör / Sector	2013	2014	2015	2016	2016	2017	2017/2016 (%)
					Ocak-Haziran / January-June		
<b>Yan Sanayi İhracatı/Total Component Exports</b>	<b>9.065.017.539</b>	<b>9.504.013.791</b>	<b>8.641.977.425</b>	<b>8.947.915.672</b>	<b>4.630.739.121</b>	<b>4.735.135.257</b>	<b>2%</b>
İç ve Dış Lastik / Tyres	1.130.005.891,78	1.126.709.610,14	960.550.807	978.284.060	484.848.050	541.517.503	12%
Emniyet Camı / Safety Glasses	135.230.309,67	143.208.298,99	124.564.841	119.569.736	64.605.592	66.706.101	3%
Motor (Engine)	319.294.885,46	171.893.752,32	221.897.271	370.561.589	182.201.621	234.487.533	29%
Akümülatör / Batteries	306.451.449,47	289.101.198,21	220.462.827	224.590.660	93.724.642	114.574.293	22%
Diğer Aksam ve Parça / Spare Parts&Components	7.174.035.002,35	7.773.100.931,83	7.114.501.679	7.254.909.627	3.805.359.216	3.777.849.827	-1%
<b>Ana Sanayi İhracatı/Total Vehicle Exports</b>	<b>12.491.591.365</b>	<b>13.259.499.977</b>	<b>12.977.346.859</b>	<b>15.302.074.705</b>	<b>7.281.989.643</b>	<b>9.810.695.734</b>	<b>35%</b>
Otobüs / Bus	937.790.962,87	985.983.007,01	1.023.556.746	1.190.475.986	644.588.514	631.760.625	-2%
Midibüs-Minibüs / Minibus- Minibus	147.769.644,17	97.685.509,12	130.195.838	238.911.957	111.547.194	135.100.325	21%
Otomobil (P. Cars)	6.855.475.589,83	7.258.361.005,24	6.881.867.274	8.336.946.503	3.570.508.353	6.099.316.500	71%
Kamyon-Kamyonet/HCV-LCV	3.918.798.755,31	4.201.760.813,55	4.264.018.829	4.616.562.139	2.481.211.692	2.451.460.005	-1%
Römork ve Yarı Römork/Trailer-Semi Trailer	218.385.731,69	252.354.014,20	252.397.167	265.323.711	159.671.266	113.521.555	-29%
Çekici/Truck-Tractor	77.907.406,95	38.396.524,81	48.108.959	316.355.575	131.769.163	221.893.037	68%
Tarım Traktörü/Farm Tractor	335.463.274,61	424.959.103,39	377.202.046	337.498.834	182.693.461	157.643.688	-14%
<b>Toplam/Total</b>	<b>21.556.608.904</b>	<b>22.763.513.769</b>	<b>21.619.324.284</b>	<b>24.249.990.377</b>	<b>11.912.728.763</b>	<b>14.545.830.991</b>	<b>22%</b>

Kaynak: Uludağ İhracatçı Birlikleri . ÜİB tarafından OSD için özel olarak analiz edilen Otomotiv İhracatı kapsamında; ÜİB Türkiye Genel Otomotiv Endüstrisi sınıflandırmasına kıyasla "Römork ve Yarı Römork", "Tarım Traktörü" verileri dahil edilmekte; "Kullanılmış Araçlar", "İki Tekerlekli Taşıtlar", "Demiryolu Taşıtları" hariç tutulmaktadır.

Source: Uludağ Exporters Association - Special Analyze for OSD

Compared to Turkish General Automotive Industry classification, this special analyze includes; farms tractors, trailers and semi-trailers, does not include; used vehicles, two-wheeled vehicles and railway vehicles.

## Sektör Bazında İhracat (1000 \$)

Exports on Sectorial Basis

SEKTÖRLER (1.000 \$)	HAZİRAN				OCAK - HAZİRAN				SON 12 AYLIK			
	2016	2017	Değişim ('17/'16)	Pay(17)	2016	2017	Değişim ('17/'16)	Pay(17)	2016	2017	Değişim ('17/'16)	Pay(17)
Otomotiv Endüstrisi	2.147.765	2.500.046	16,4	20,7	11.734.074	14.359.485	22,4	18,8	22.395.914	26.512.779	18,4	18,0
Hazırgiyim ve Konfeksiyon	1.526.216	1.394.579	-8,6	11,6	8.711.291	8.205.761	-5,8	10,7	17.510.514	16.451.100	-6,1	11,2
Kimyevi Maddeler ve Mamulleri	1.316.136	1.286.393	-2,3	10,7	6.998.895	7.919.124	13,1	10,4	14.445.994	14.857.891	2,9	10,1
Çelik	903.306	904.137	0,1	7,5	4.450.978	5.824.951	30,9	7,6	8.992.541	10.448.234	16,2	7,1
Elektrik Elektronik ve Hizmet	925.528	878.707	-5,1	7,3	4.945.217	4.758.708	-3,8	6,2	10.339.656	9.785.177	-5,4	6,6
Tekstil ve Hammaddeleri	713.443	648.464	-9,1	5,4	4.003.209	3.984.745	-0,5	5,2	7.961.333	7.848.747	-1,4	5,3
Demir ve Demir Dışı Metaller	538.464	561.659	4,3	4,7	3.019.859	3.257.726	7,9	4,3	6.123.242	6.183.760	1,0	4,2
Hububat, Bakliyat, Yağlı Tohumlar ve Mamulleri	532.805	467.507	-12,3	3,9	3.169.504	3.222.082	1,7	4,5	6.235.151	6.411.558	2,8	4,7
Makine ve Aksamları	474.822	509.098	7,2	4,2	2.708.733	2.843.885	5,0	3,7	5.510.389	5.437.821	-1,3	3,7
Madencilik Ürünleri	361.235	367.628	1,8	3,0	1.759.502	2.279.935	29,6	3,0	3.676.472	4.307.678	17,2	2,9
<b>TOPLAM</b>	<b>11.852.654</b>	<b>12.069.514</b>	<b>1,8</b>	<b>100,0</b>	<b>70.572.220</b>	<b>76.382.537</b>	<b>8,2</b>	<b>100,0</b>	<b>140.978.175</b>	<b>147.329.152</b>	<b>4,5</b>	<b>100,0</b>

Kaynak: TİM

Haziran ayı ihracat verilerine, "İhracatçı Birlikleri Kaydından Muaf İhracat" verisi dahil değildir.

Source: TİM

Exportation data for June does not include "Exempted Exports from the Exporters' Union Registration".

### First 3 Sectors:

- 1- Automotive Industry
- 2- Ready Wear and Confection
- 3- Chemical Articles and Products

### Firma Bazında İhracat (Adet)

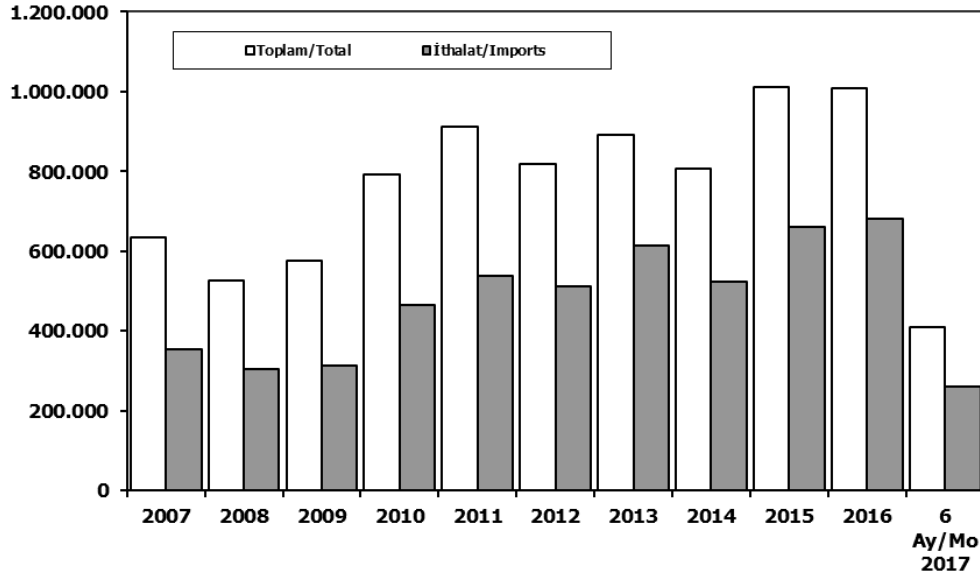
Export Of Member Companies (Unit)

FİRMALAR Companies	2015	2016	Ocak-Haziran 6 Months	
			2016	2017
OYAK RENAULT	270.299	270.088	139.541	157.601
TOFAŞ	173.743	279.444	134.264	153.452
FORD OTOSAN	252.571	256.706	135.260	151.990
TOYOTA	81.962	109.184	29.350	131.309
HYUNDAI ASSAN	201.276	207.234	109.030	106.982
TÜRK TRAKTÖR	14.122	12.625	6.902	6.049
M. BENZ TÜRK	4.252	8.307	3.966	5.283
HONDA TÜRKİYE	2.220	2.914	1.089	4.606
KARSAN	3.067	3.629	1.326	1.095
MAN TÜRKİYE	1.493	1.717	963	1.071
HATTAT TARIM	810	1.026	629	575
TEMSA GLOBAL	441	653	334	351
OTOKAR	720	833	391	298
A.I.O.S.	291	673	241	246
<b>GENEL TOPLAM</b>	<b>1.007.267</b>	<b>1.155.033</b>	<b>563.286</b>	<b>720.908</b>

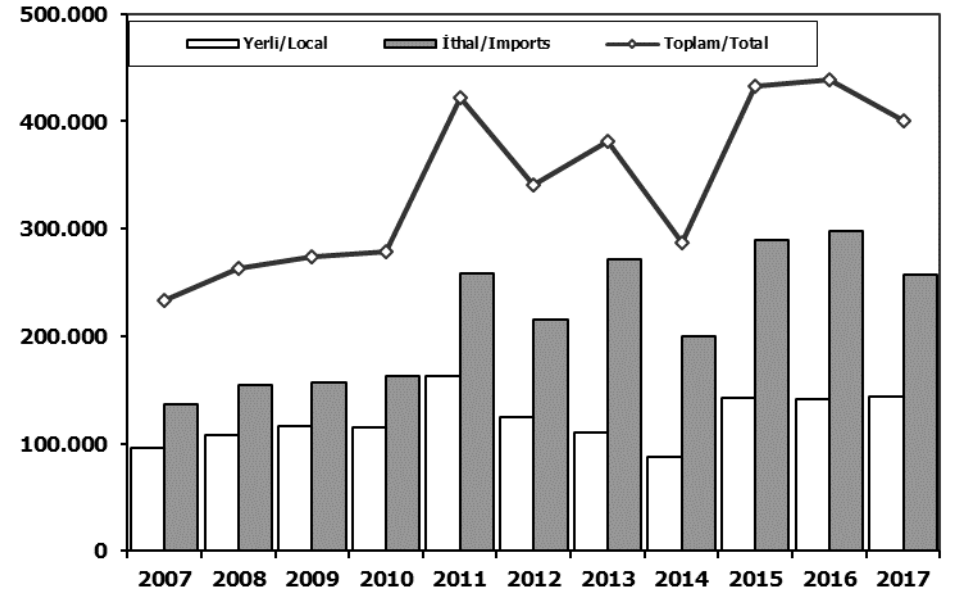
Kaynak: OSD



## Toplam Pazar (Otomobil+T.Araç) Total Market (P.Cars+C.V)



## Hafif Araçlar Pazarı (2007-2017 Ocak-Haziran) LV Market (2007-2017 January-June)

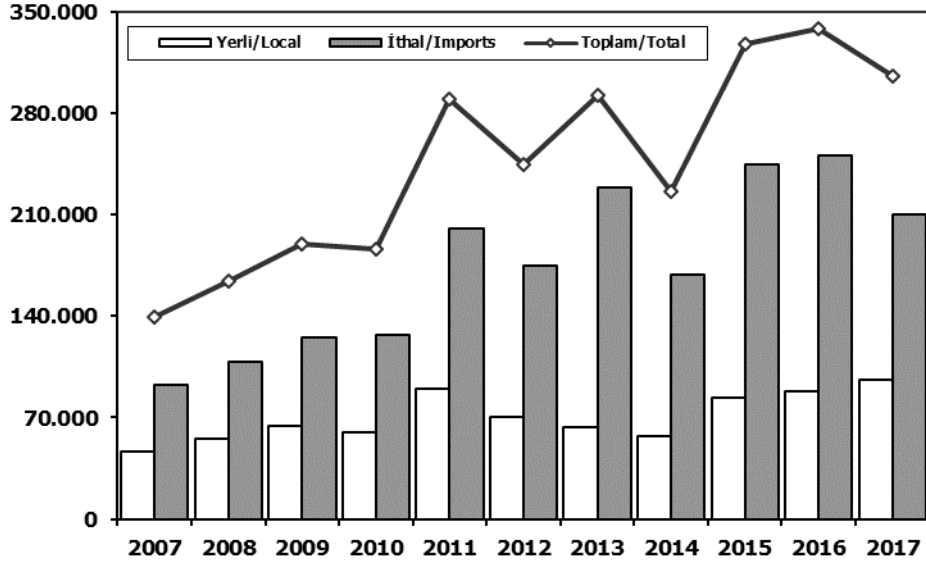


	2007	2008	2009	2010	2011	2012	2013	2014	2015	2016	6 Ay/Mo 2016	6 Ay/Mo 2017
Toplam/Total	634.206	526.544	575.869	793.172	910.867	817.620	893.124	807.486	1.011.194	1.007.857	450.997	410.609
İthalat/Imports	355.752	306.087	313.921	465.408	538.532	511.694	615.609	522.842	660.045	681.308	302.088	260.172
İthalat/Imports (%)	56	58	55	59	59	63	69	65	65	68	67	63

	2007	2008	2009	2010	2011	2012	2013	2014	2015	2016	2017
Yerli/Local	96.377	108.441	116.483	115.458	162.944	124.724	110.647	87.190	143.052	140.957	144.007
İthal/Imports	136.792	154.609	156.874	162.797	258.928	215.908	271.096	199.671	289.498	297.860	257.151
Toplam/Total	233.169	263.050	273.357	278.255	421.872	340.632	381.743	286.861	432.550	438.817	401.158
İthalat/Imports (%)	59	59	57	59	61	63	71	70	67	68	64

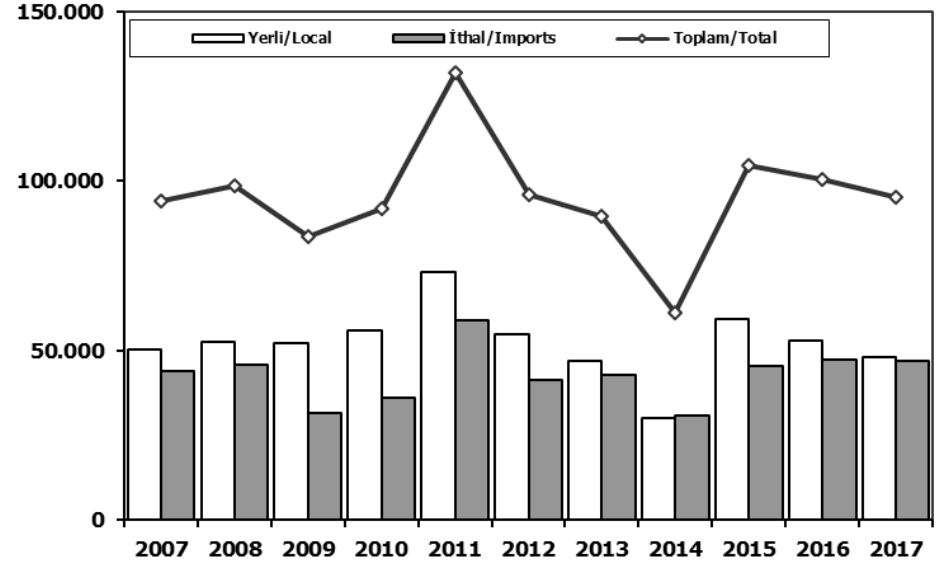
## Otomobil Pazarı (2007-2017 Ocak-Haziran)

### P.Cars Market (2007-2017 January-June)



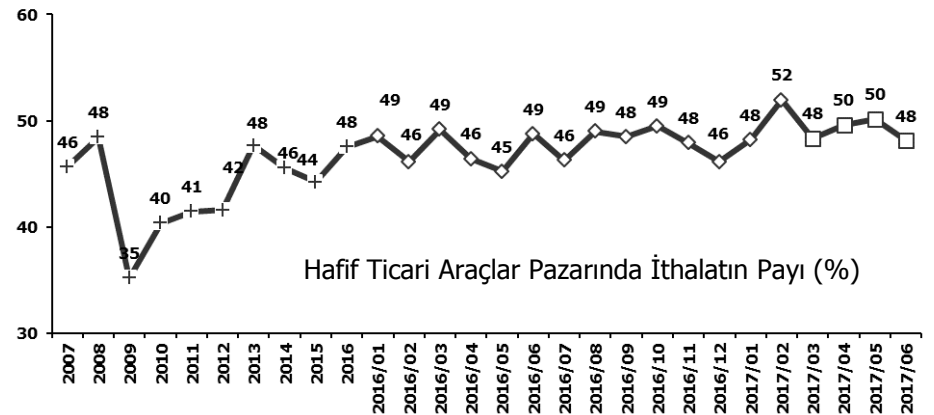
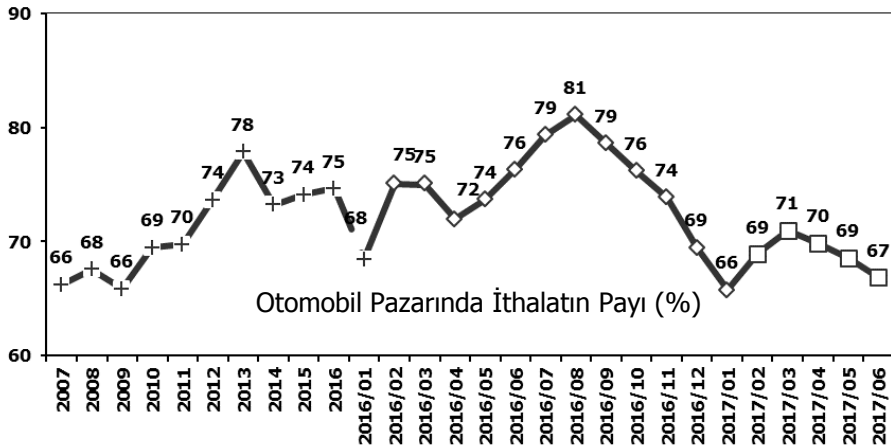
## Hafif Ticari Araçlar Pazarı (2007-2017 Ocak-Haziran)

### Light Commercial Vehicle Market (2007-2017 January-June)



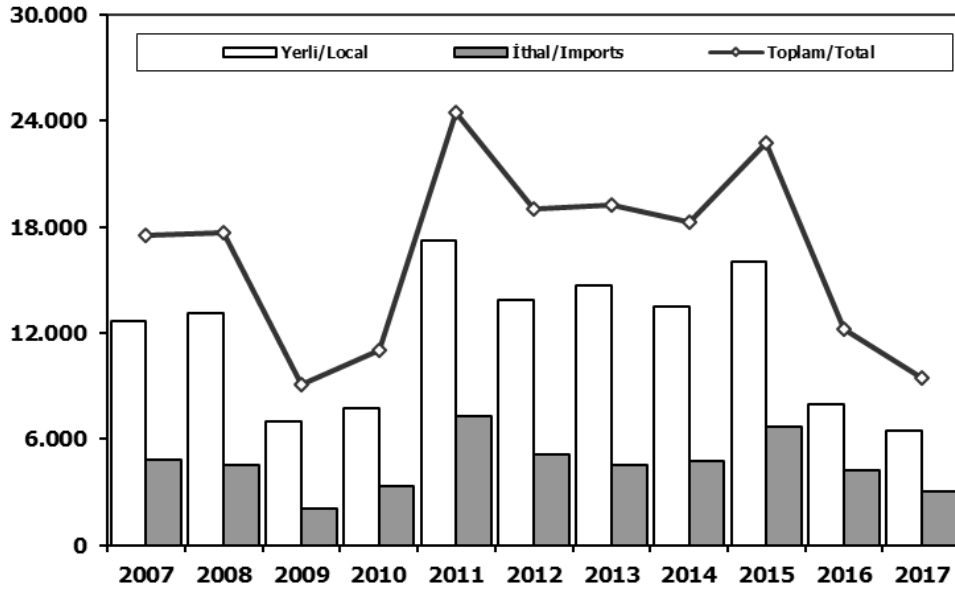
	2007	2008	2009	2010	2011	2012	2013	2014	2015	2016	2017
Yerli/Local	46.237	55.727	64.339	59.686	89.601	69.994	63.686	56.924	83.639	88.101	95.794
İthal/Imports	92.894	108.718	125.357	126.619	200.145	174.496	228.420	168.849	244.207	250.381	210.130
Toplam/Total	139.131	164.445	189.696	186.305	289.746	244.490	292.106	225.773	327.846	338.482	305.924
İthalat/Imports (%)	67	66	66	68	69	71	78	75	74	74	69

	2007	2008	2009	2010	2011	2012	2013	2014	2015	2016	2017
Yerli/Local	50.140	52.714	52.144	55.772	73.343	54.730	46.961	30.266	59.413	52.856	48.213
İthal/Imports	43.898	45.891	31.517	36.178	58.783	41.412	42.676	30.822	45.291	47.479	47.021
Toplam/Total	94.038	98.605	83.661	91.950	132.126	96.142	89.637	61.088	104.704	100.335	95.234
İthalat/Imports (%)	47	47	38	39	44	43	48	50	43	47	49



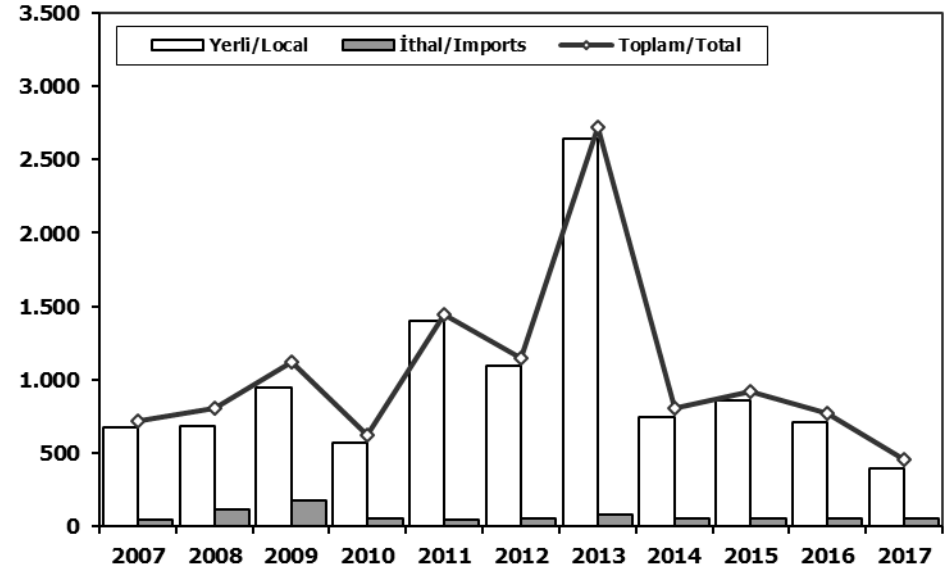
## Ağır Ticari Araçlar Pazarı (2007-2017 Ocak-Haziran)

### HCV Market (2007-2017 January-June)



## Otobüs Pazarı (2007-2017 Ocak-Haziran)

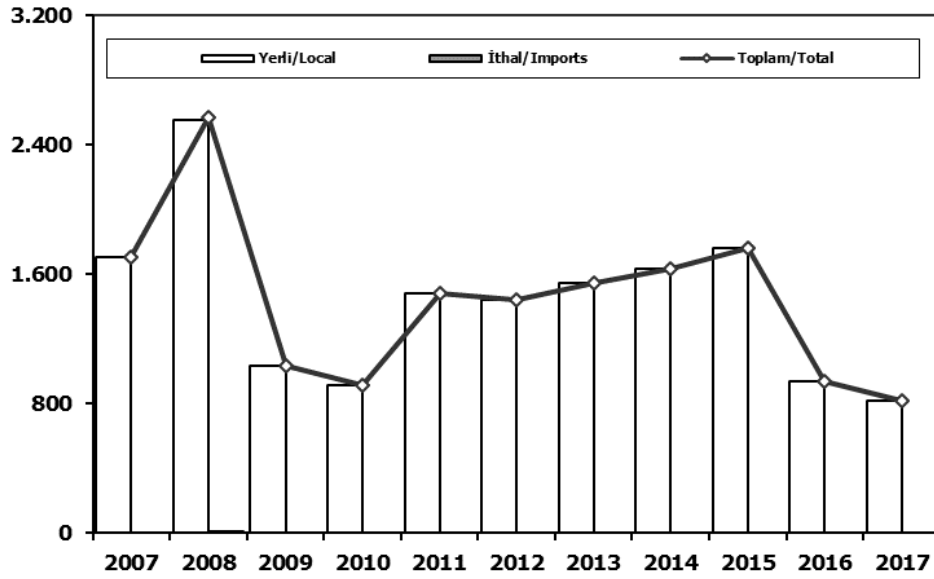
### Bus Market (2007-2017 January-June)



	2007	2008	2009	2010	2011	2012	2013	2014	2015	2016	2017		2007	2008	2009	2010	2011	2012	2013	2014	2015	2016	2017
<b>Yerli/Local</b>	12.688	13.128	7.022	7.704	17.182	13.868	14.702	13.508	16.056	7.952	6.430	<b>Yerli/Local</b>	673	688	943	568	1.398	1.092	2.639	749	862	712	395
<b>İthal/Imports</b>	4.832	4.536	2.044	3.329	7.312	5.118	4.521	4.755	6.663	4.228	3.021	<b>İthal/Imports</b>	49	121	181	54	47	59	85	60	60	60	60
<b>Toplam/Total</b>	17.520	17.664	9.066	11.033	24.494	18.986	19.223	18.263	22.719	12.180	9.451	<b>Toplam/Total</b>	722	809	1.124	622	1.445	1.151	2.724	809	922	772	455
<b>İthalat/Imports (%)</b>	28	26	23	30	30	27	24	26	29	35	32	<b>İthalat/Imports (%)</b>	7	15	16	9	3	5	3	7	7	8	13

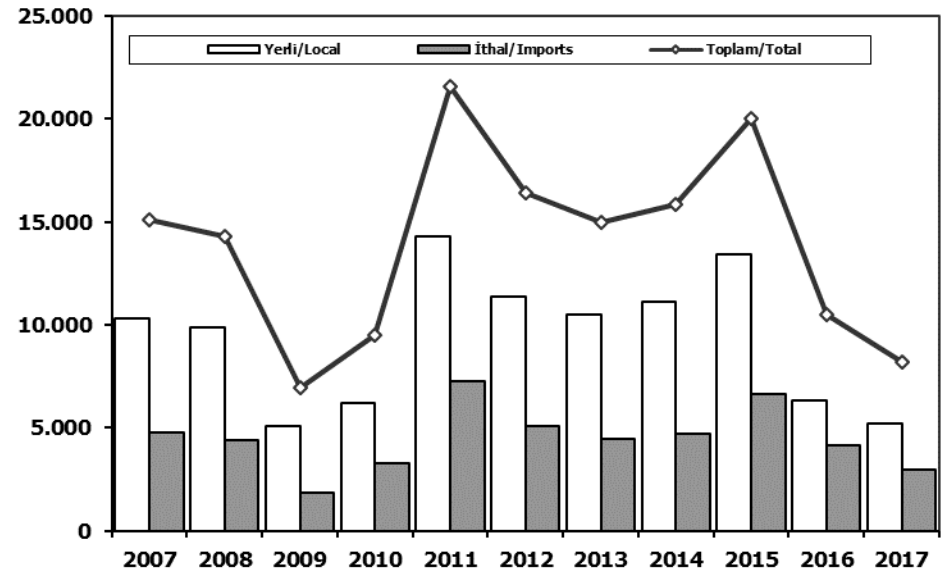
## Midibüs Pazarı (2007-2017 Ocak-Haziran) (7-9 mt / 25-35 Kişilik)

### Midibus Market (2007-2017 January-June) (7-9 mt / 25-35 Passengers)



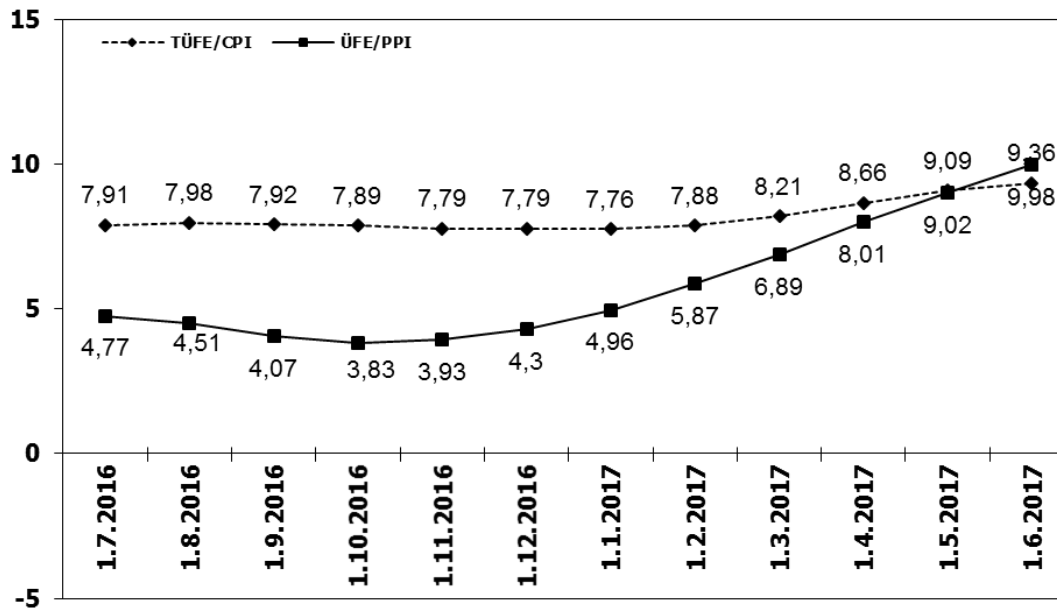
## Kamyon Pazarı (2007-2017 Ocak-Haziran)

### Truck Market (2007-2017 January-June)

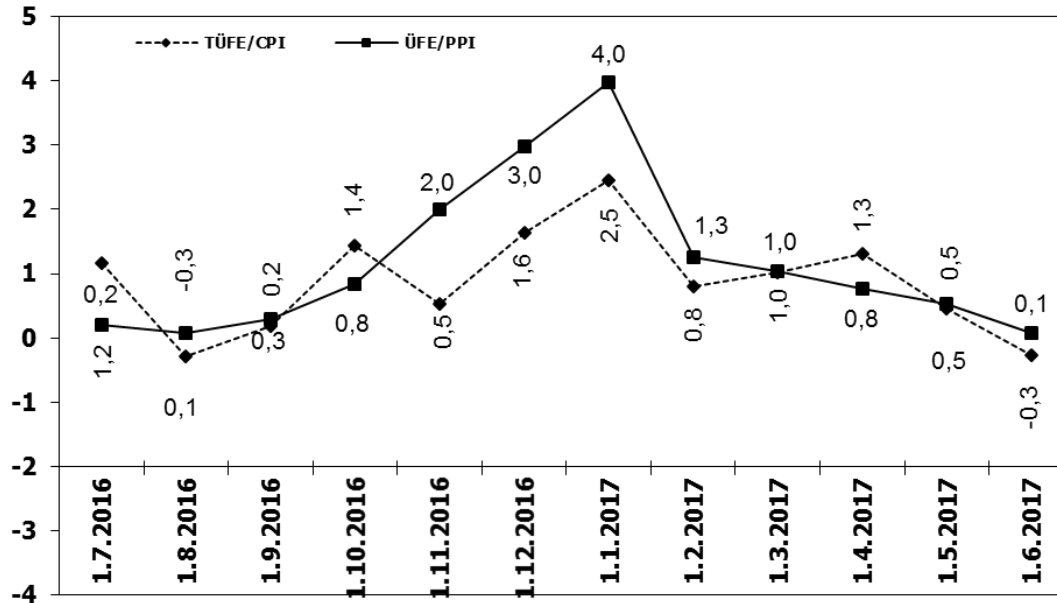


	2007	2008	2009	2010	2011	2012	2013	2014	2015	2016	2017		2007	2008	2009	2010	2011	2012	2013	2014	2015	2016	2017
<b>Yerli/Local</b>	1.706	2.554	1.030	916	1.481	1.438	1.548	1.635	1.759	939	816	<b>Yerli/Local</b>	10.309	9.886	5.049	6.220	14.303	11.338	10.515	11.124	13.435	6.301	5.219
<b>İthal/Imports</b>	0	11	0	0	0	0	0	0	0	0	0	<b>İthal/Imports</b>	4.783	4.404	1.863	3.275	7.265	5.059	4.436	4.695	6.603	4.168	2.961
<b>Toplam/Total</b>	1.706	2.565	1.030	916	1.481	1.438	1.548	1.635	1.759	939	816	<b>Toplam/Total</b>	15.092	14.290	6.912	9.495	21.568	16.397	14.951	15.819	20.038	10.469	8.180
<b>İthalat/Imports (%)</b>	0	0	0	0	0	0	0	0	0	0	0	<b>İthalat/Imports (%)</b>	32	31	27	34	34	31	30	30	33	40	36

## TÜFE ve ÜFE'nin 12 Aylık Ort. Değişimi (%) CPI and PPI 12 Months Avr. Changes (%)



## TÜFE ve ÜFE'nin Aylık Değişimi (%) CPI and PPI Monthly Changes (%)





## 2017 Yılı İthal Hafif Araç Satışları 2017 Light Vehicles Import Sales

2017 YILI İTHAL OTOMOBİL SATIŞLARI / P.Cars Import 2017

2016 TOPLAMI 2016 Total	1	2	3	4	5	6	7	8	9	10	11	12	2017 TOPLAMI 2017 Total
VOLKSWAGEN	101.761	3.059	4.903	6.729	6.672	8.131	7.213						36.707
OPEL	55.471	1.577	1.652	4.014	3.838	3.654	4.055						18.790
DACIA	42.109	1.471	2.303	3.534	3.557	3.356	2.933						17.154
FORD	33.453	1.175	1.199	2.760	2.902	3.992	3.425						15.453
RENAULT	42.422	844	1.462	3.148	2.879	3.630	3.230						15.193
PEUGEOT	25.440	637	1.884	2.139	2.604	2.651	2.799						12.714
NISSAN	30.513	1.154	1.519	2.083	2.254	2.835	2.385						12.230
HYUNDAI	26.463	1.413	1.393	2.563	2.003	1.904	2.179						11.455
MERCEDES-BENZ	32.666	499	1.078	2.308	2.106	2.213	2.313						10.517
SKODA	28.876	925	1.225	1.335	2.144	1.655	1.931						9.215
AUDI	22.005	625	702	1.287	1.673	2.109	2.177						8.573
SEAT	20.637	536	623	1.103	1.583	1.651	2.436						7.932
CITROEN	17.041	515	761	1.765	1.654	1.504	1.473						7.672
BMW	27.166	570	900	1.346	877	1.814	1.409						6.916
KIA	14.398	426	481	630	1.097	1.110	1.003						4.747
HONDA	8.714	206	255	642	618	660	666						3.047
TOYOTA	11.513	439	413	439	427	484	707						2.909
VOLVO	4.100	155	213	232	340	400	374						1.714
SUZUKI	3.931	79	143	260	206	324	296						1.308
FIAT	3.103	106	187	229	185	178	145						1.030
JEEP	2.192	111	104	162	184	179	188						928
LAND ROVER	2.108	34	72	104	175	211	176						772
SUBARU	1.584	67	40	195	129	30	216						677
MAZDA	1.427	54	76	109	100	139	161						639
MINI	1.688	55	81	82	80	96	130						524
PORSCHE	827	66	61	61	35	31	62						316
MITSUBISHI	709	28	43	50	45	24	16						206
ALFA ROMEO	634	17	43	59	27	24	24						194
SSANGYONG	507	10	20	32	27	32	66						187
JAGUAR	481	6	10	23	36	49	23						147
SMART	192	2	7	20	19	28	8						84
INFINITI	120	6	12	8	2	16	10						54
LEXUS	64	16	3	6	11	9	2						47
DS	400	9	0	1	13	5	1						29
MASERATI	72	2	7	3	5	2	4						23
ASTON MARTIN	29	1	2	3	2	2	2						12
BENTLEY	9	1	2	0	1	1	1						6
FERRARI	18	0	1	3	1	0	1						6
LAMBORGHINI	7	0	0	0	1	1	1						3
CHERY	144	0	0	0	0	0	0						0
PROTON	51	0	0	0	0	0	0						0
<b>TOPLAM</b>	<b>565.045</b>	<b>16.896</b>	<b>23.880</b>	<b>39.467</b>	<b>40.512</b>	<b>45.134</b>	<b>44.241</b>	<b>0</b>	<b>0</b>	<b>0</b>	<b>0</b>	<b>0</b>	<b>210.130</b>

2017 YILI İTHAL HAFİF TİCARİ ARAÇ SATIŞLARI / Light Commercial Vehicles Import 2017

2016 TOPLAMI 2016 Total	1	2	3	4	5	6	7	8	9	10	11	12	2017 TOPLAMI 2017 Total
VOLKSWAGEN	32.772	1.255	1.599	2.121	2.362	2.524	2.218						12.079
RENAULT	15.091	519	718	1.327	1.238	1.268	1.098						6.168
CITROEN	6.884	438	669	424	807	1.147	1.176						4.661
PEUGEOT	8.402	157	351	990	739	965	726						3.928
MERCEDES-BENZ	8.070	343	496	687	742	781	767						3.816
DACIA	5.422	235	348	523	615	658	650						3.029
FIAT	5.885	257	448	490	602	405	380						2.582
TOYOTA	5.645	356	451	489	304	243	211						2.054
KIA	3.952	193	240	384	306	386	150						1.659
FORD	4.878	250	270	371	212	270	220						1.593
HYUNDAI	2.244	134	174	242	308	357	243						1.458
NISSAN	1.540	167	266	337	258	170	196						1.394
MITSUBISHI	3.533	173	213	127	209	438	169						1.329
IVECO	2.175	146	133	250	205	210	152						1.096
SSANGYONG	254	9	4	21	12	15	51						112
ISUZU	1.055	12	12	9	11	11	8						63
TATA	9	0	0	0	0	0	0						0
<b>TOPLAM</b>	<b>107.811</b>	<b>4.644</b>	<b>6.392</b>	<b>8.792</b>	<b>8.930</b>	<b>9.848</b>	<b>8.415</b>	<b>0</b>	<b>0</b>	<b>0</b>	<b>0</b>	<b>0</b>	<b>47.021</b>