



OTOMOTİV SANAYİİ DERNEĞİ  
AUTOMOTIVE MANUFACTURERS ASSOCIATION

# AYLIK RAPOR

## Automotive Industry Monthly Report

Eylül / September 2017

- **Üretim/Production**
- **Satış/Sales**
- **İthalat/Imports**
- **İhracat/Exports**

OSD "OICA" Üyesidir



OSD is a Member of "OICA"

## 2017 Eylül Ayı Özeti / 2017 September Summary

KONULAR/MATTERS		EYLÜL / SEPTEMBER			9 AY/ 9 MONTHS			SON 12 AYLIK / YoY		
		2016	2017	2017/2016 (%)	2016	2017	2017/2016 (%)	2016	2017	2017/2016 (%)
Üretim/Production	Toplam/Total	118.391	134.247	13	1.033.275	1.223.838	18	1.418.240	1.676.525	18
	Otomobil/P.Cars	78.489	88.952	13	641.181	838.976	31	865.984	1.148.707	33
Pazar/Market	Toplam/Total	69.068	73.602	7	652.839	642.695	-2	970.834	997.698	3
	Otomobil/P.Cars	51.340	53.423	4	489.365	476.621	-3	714.056	744.194	4
İthalat/Import	Toplam/Total	48.671	47.110	-3	446.060	411.078	-8	648.260	646.311	0
	Otomobil/P.Cars	40.369	37.790	-6	370.671	331.827	-10	535.960	526.201	-2
İhracat/Export	Toplam/Total	90.398	94.748	5	795.899	984.404	24	1.081.218	1.329.874	23
	Otomobil/P.Cars	60.526	64.166	6	500.723	689.176	38	676.732	934.162	38
İhracat / Export (\$)	Toplam/Total **	1.972.445.377	2.197.242.264	11	17.355.249.537	21.108.170.629	22	23.265.369.728	28.025.675.796	20
	Otomobil/P.Cars	709.727.256	849.001.109	20	5.472.942.230	8.643.557.851	58	7.313.922.776	11.513.623.408	57

PARAMETRELER / PARAMETERS		EYLÜL / SEPTEMBER			9 AY/ 9 MONTHS			SON 12 AYLIK / YoY		
		2016	2017	2017/2016 (%)	2016	2017	2017/2016 (%)	2016	2017	2017/2016 (%)
ÜFE/PPI		0,29	0,24	**	3,79	9,78	**	4,07	13,26	**
TÜFE/CPI		0,18	0,65	**	4,72	7,29	**	7,92	9,98	**
Sanayi Endeksi/Industry Index		0,31	0,35	**	5,00	10,54	**	5,08	15,08	**
\$ (*)		2,9760	3,4932	17	2,9195	3,5682	22	2,9165	3,4918	20
EURO (*)		3,3223	4,1378	25	3,2487	3,9778	22	3,2271	3,8656	20
Japon Yeni (*)		2,8941	3,1316	8	2,6687	3,1703	19	2,5977	3,1204	20

(\*) Ortalama Değerler / Average Values

(\*\*) Toplam Sanayi / Total Industry Including Components

*Raporda yer alan üretim adetleri yalnızca OSD üyelerinin verilerini göstermektedir.  
Production units in this report only show the data of OSD members.*

## 2016/2017 Yılları Üretim

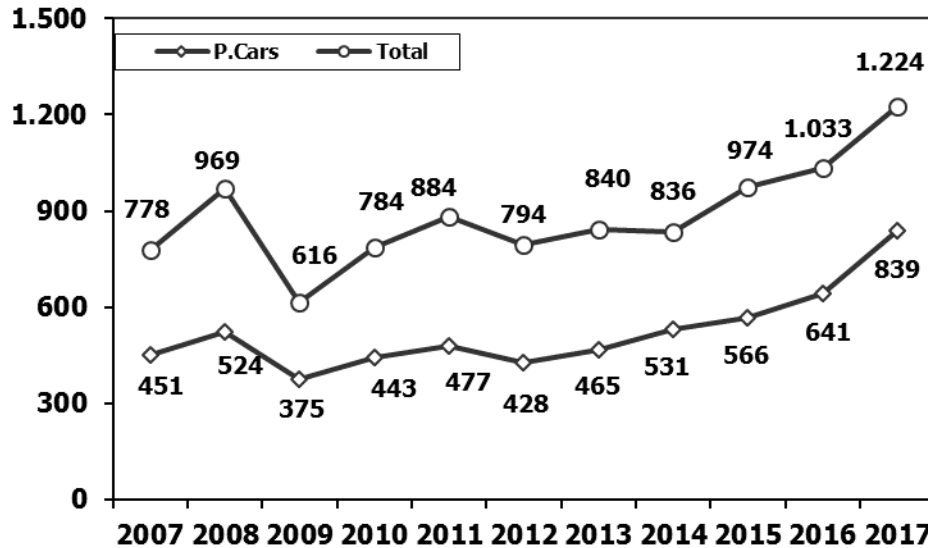
2016/2017 Production

K.KAMYON : AYA 3.5-12 Ton (L.Truck:GVW 3.5-12 Ton)

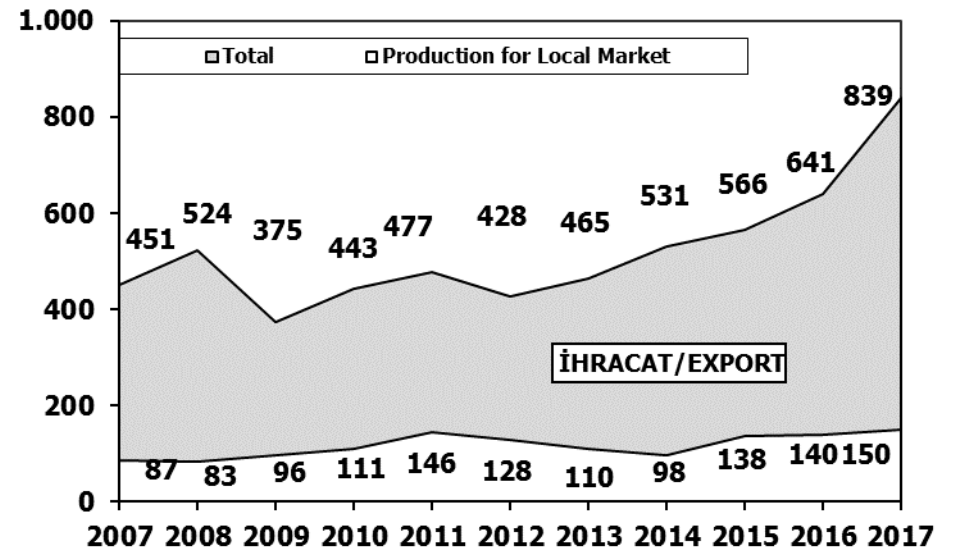
B.KAMYON : AYA 12 Ton'dan Büyük (M.Truck:GVW 12 Ton And Up)

ARAÇ TİPLERİ	EYLÜL AYI ÜRETİMİ September Production		9 AYLIK ÜRETİM 9 Months Production		DEĞİŞİM % Percent Change %	
	2016	2017	2016	2017	EYLÜL September	9 AY 9 Months
<b>OTOMOBİL - Pass.Car</b>	<b>78.489</b>	<b>88.952</b>	<b>641.181</b>	<b>838.976</b>	<b>13</b>	<b>31</b>
<b>TİCARİ ARAÇLAR - Commercial Vehicles</b>	<b>39.902</b>	<b>45.295</b>	<b>392.094</b>	<b>384.862</b>	<b>14</b>	<b>-2</b>
* B. KAMYON - H. Truck	1.541	2.148	11.637	12.870	39	11
* K. KAMYON - L. Truck	170	407	1.684	2.461	139	46
* KAMYONET - Pick Up	33.318	37.458	339.637	321.365	12	-5
* OTOBÜS - Bus	620	559	6.212	6.420	-10	3
* MİNİBÜS - Minibus	3.991	4.337	30.360	39.367	9	30
* MİDİBÜS - Midibus	262	386	2.564	2.379	47	-7
<b>TAŞIT ARAÇLARI TOPLAM - MV Total</b>	<b>118.391</b>	<b>134.247</b>	<b>1.033.275</b>	<b>1.223.838</b>	<b>13</b>	<b>18</b>
<b>TRAKTÖR - F.Tractor</b>	<b>3.543</b>	<b>4.910</b>	<b>39.144</b>	<b>38.734</b>	<b>39</b>	<b>-1</b>
<b>GENEL TOPLAM - Grand Total</b>	<b>121.934</b>	<b>139.157</b>	<b>1.072.419</b>	<b>1.262.572</b>	<b>14</b>	<b>18</b>

**Toplam Üretim ve Otomobil Üretimi (x1000) (Ocak-Eylül)**  
Total & P.Cars Production (x1000) (January-September)

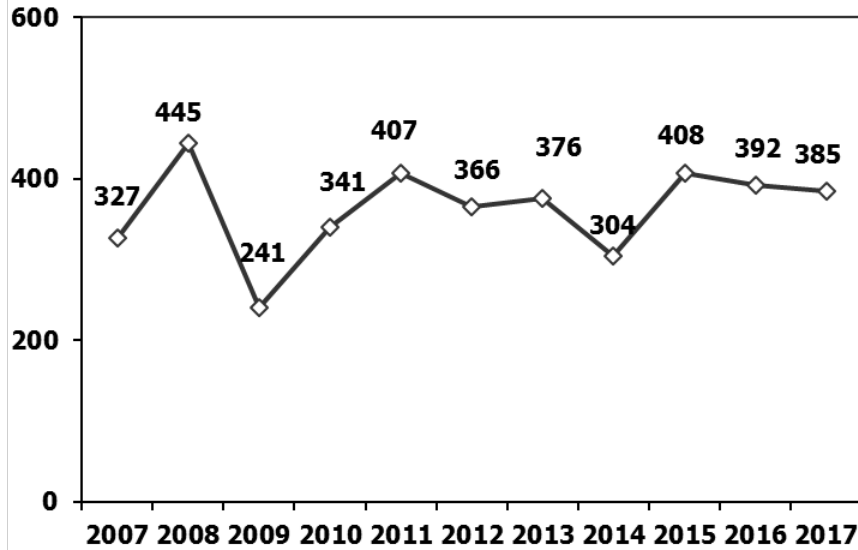


**Otomobil Üretimi ve İhracat (x1000) (Ocak-Eylül)**  
P.Cars Production & Exports (x1000) (January-September)



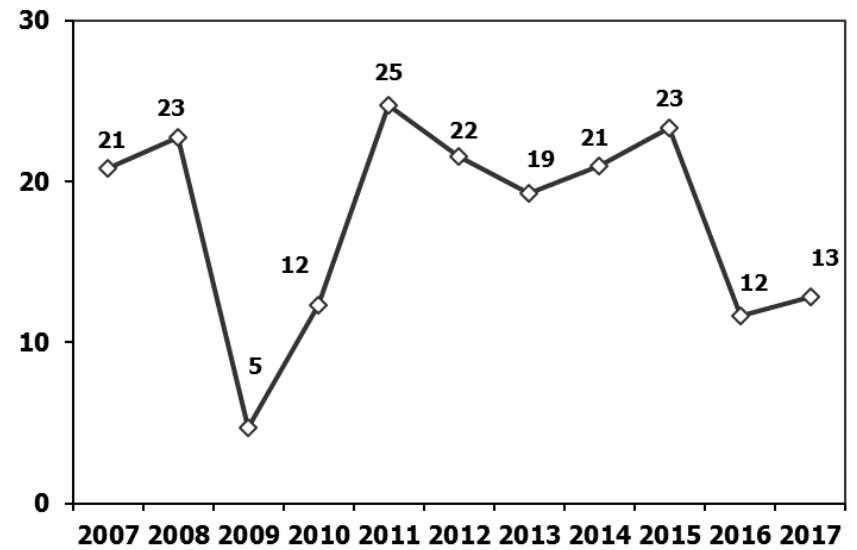
### Ticari Araç Üretimi (x1000) (Ocak-Eylül)

Commercial Vehicle Production (x1000) (January-September)



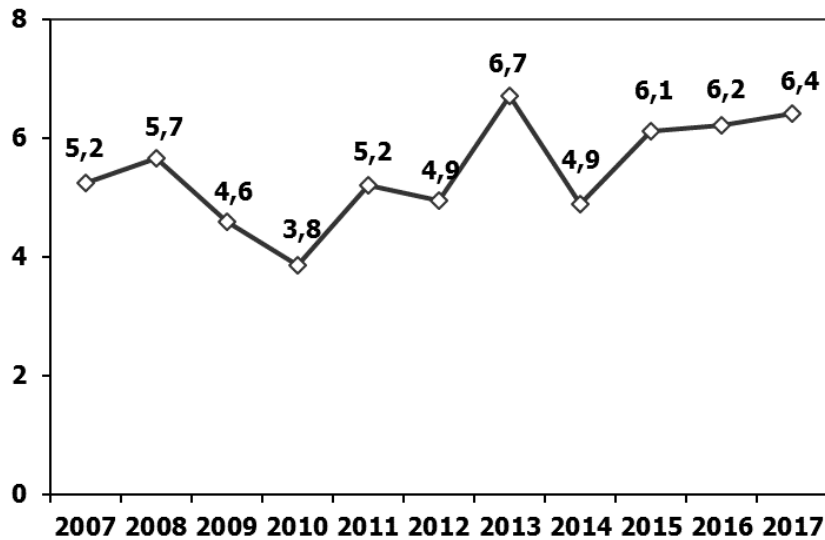
### (AYA >12 Ton) Büyük Kamyon Üretimi (x1000) (Ocak-Eylül)

(GVW >12 Ton) Heavy Truck Production (x1000) (January-September)



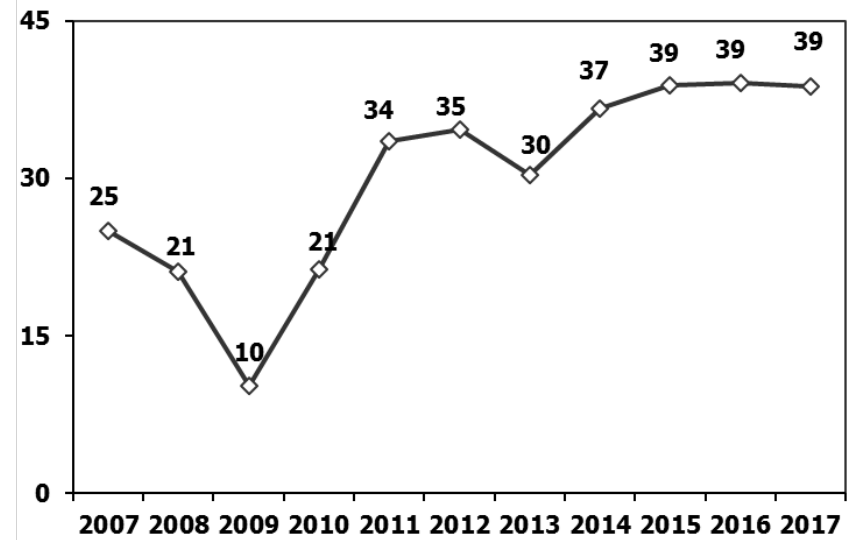
### Otobüs Üretimi (x1000) (Ocak-Eylül)

Bus Production (x1000) (January-September)



### Traktör Üretimi (x1000) (Ocak-Eylül)

F. Tractor Production (x1000) (January-September)

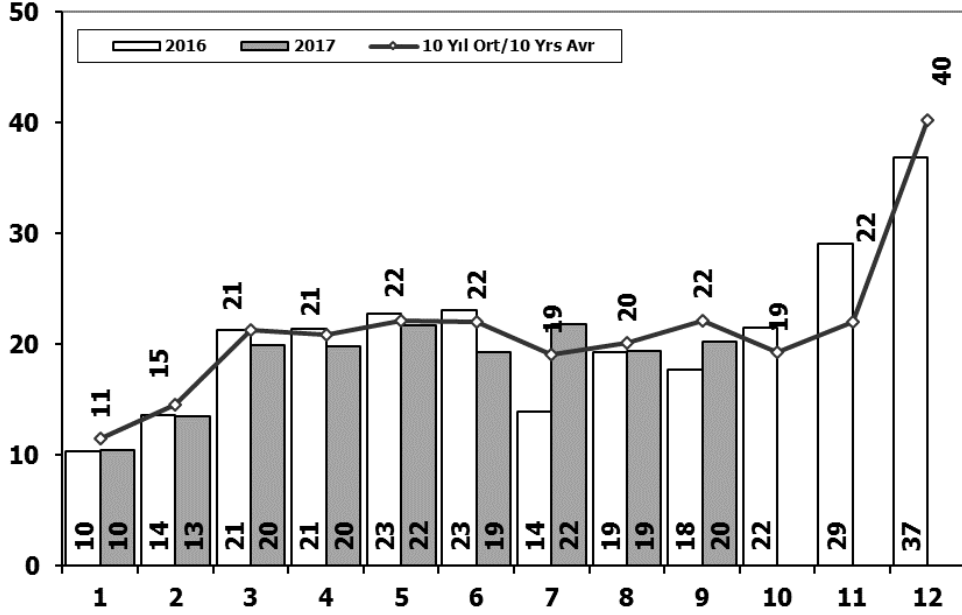






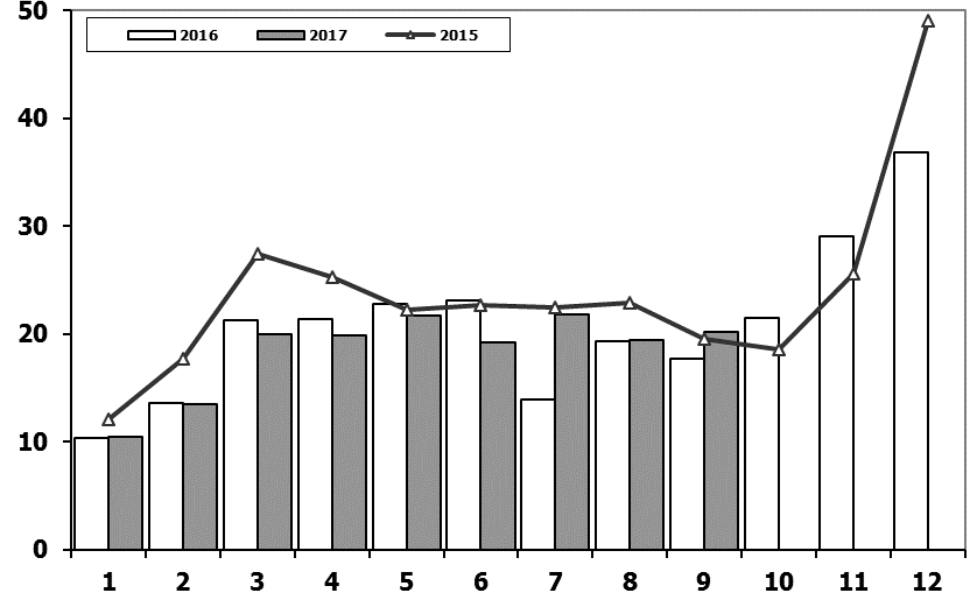
## Ticari Araç Pazarının Analizi (x1000)

### CV Market Analysis (x1000)



## Ticari Araç Pazarı (x1000)

### CV Total Market (x1000)

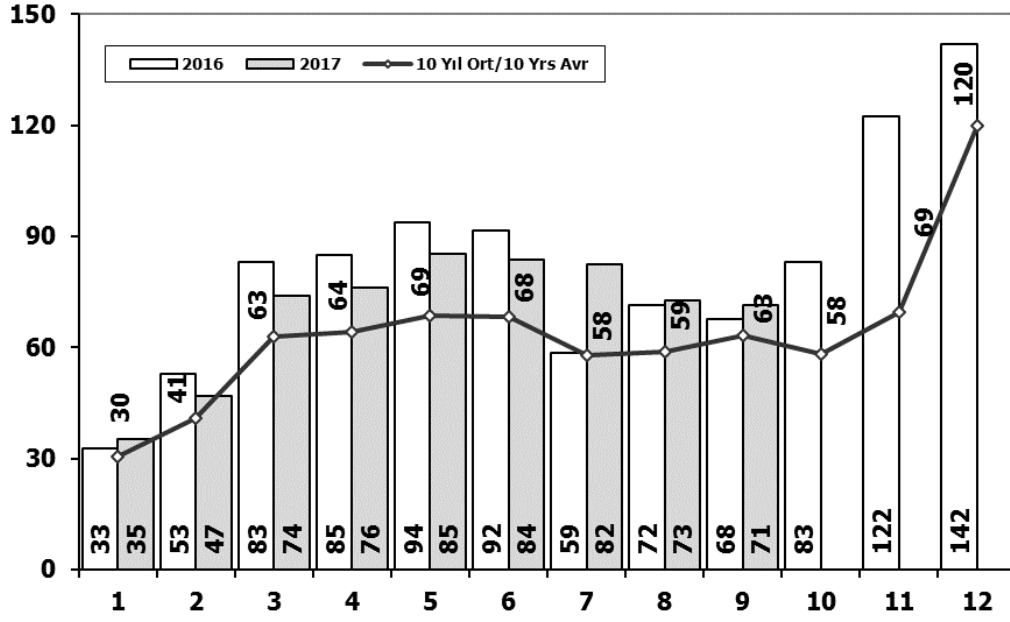


Aylar / Months	10 Yil Ort. 10 Yrs Avr. (x1000)	2017 (x1000)	%
1	11,4	10,5	-8,6
2	14,5	13,5	-7,0
3	21,3	20,0	-6,4
4	20,9	19,9	-5,1
5	22,1	21,7	-1,9
6	22,1	19,3	-12,7
7	19,0	21,8	14,5
8	20,1	19,4	-3,5
9	22,1	20,2	-8,8
<b>Total</b>	<b>173,6</b>	<b>166,1</b>	<b>-4,3</b>

	1	2	3	4	5	6	7	8	9	10	11	12	9 Ay/Mo	Total
<b>2007</b>	11.764	14.490	21.152	20.429	22.188	21.535	21.871	25.702	22.416	23.489	27.374	44.331	181.547	276.741
<b>2008</b>	15.204	16.925	22.667	20.654	20.150	20.669	19.162	20.490	19.776	15.359	10.951	18.539	175.697	220.546
<b>2009</b>	7.458	8.354	15.909	18.224	20.699	22.083	13.609	14.555	31.241	8.289	11.421	34.208	152.132	206.050
<b>2010</b>	8.456	11.662	19.870	20.530	21.161	21.304	22.319	22.423	24.124	28.921	27.345	55.273	171.849	283.388
<b>2011</b>	17.790	23.344	29.310	28.236	28.791	29.149	21.846	22.503	23.679	25.132	22.244	45.324	224.648	317.348
<b>2012</b>	10.142	14.638	21.687	20.369	24.360	23.932	20.591	19.612	23.837	19.237	22.748	40.187	179.168	261.340
<b>2013</b>	11.305	14.117	20.903	20.016	23.038	19.481	19.014	15.772	18.112	13.414	18.900	34.397	161.758	228.469
<b>2014</b>	9.857	10.141	13.152	13.997	15.530	16.674	15.604	17.708	20.918	18.445	24.242	43.887	133.581	220.155
<b>2015</b>	12.078	17.716	27.445	25.220	22.267	22.697	22.407	22.930	19.534	18.566	25.646	49.092	192.294	285.598
<b>2016</b>	10.382	13.635	21.239	21.423	22.744	23.092	13.939	19.292	17.728	21.505	29.056	36.884	163.474	250.919
<b>2017</b>	10.457	13.483	19.965	19.851	21.677	19.252	21.805	19.405	20.179				166.074	166.074

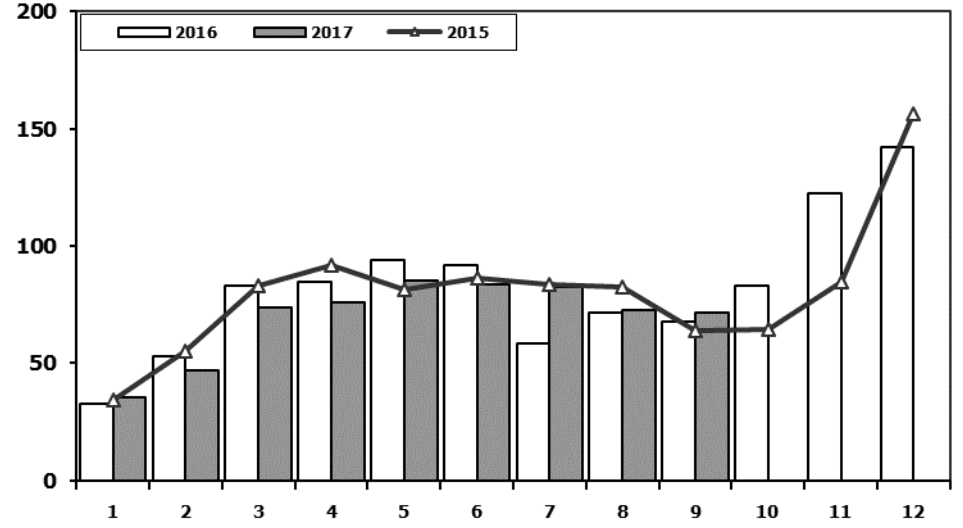
## Hafif Araç Pazarının Analizi (x1000)

### LV Market Analysis (x1000)



## Hafif Araç Pazarı (x1000)

### LV Total Market (x1000)



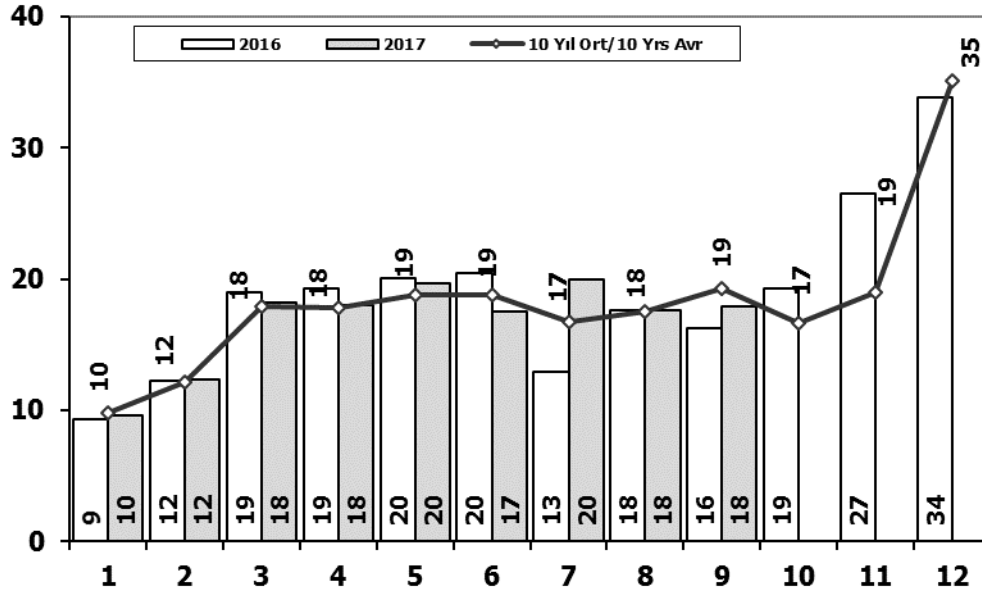
Aylar / Months	10 Yil Ort. 10 Yrs Avr. (x1000)	2017 (x1000)	%
1	30,4	35,3	16,1
2	40,9	47,0	14,9
3	62,8	73,8	17,5
4	64,2	76,0	18,4
5	68,6	85,4	24,6
6	68,2	83,7	22,7
7	57,9	82,3	42,1
8	58,8	72,5	23,5
9	63,2	71,4	13,0
<b>Total</b>	<b>514,8</b>	<b>627,3</b>	<b>21,8</b>

	1	2	3	4	5	6	7	8	9	10	11	12	9 Ay/Mo	Total
<b>2007</b>	23.117	29.184	41.890	42.366	47.938	48.674	47.490	50.558	46.581	52.725	63.313	100.926	377.798	594.762
<b>2008</b>	31.527	35.251	53.649	47.701	48.598	46.324	42.156	43.670	43.932	32.884	26.253	42.078	392.808	494.023
<b>2009</b>	19.606	21.742	55.111	52.640	63.191	61.067	28.845	35.609	81.397	21.033	27.962	88.923	419.208	557.126
<b>2010</b>	20.095	31.172	51.769	54.946	59.377	60.896	61.345	61.764	63.814	73.404	73.962	148.369	465.178	760.913
<b>2011</b>	44.892	58.663	78.403	77.695	80.646	81.573	63.044	58.406	60.129	69.421	63.657	127.910	603.451	864.439
<b>2012</b>	29.545	41.324	64.884	62.949	70.863	71.067	62.304	58.148	69.629	59.938	71.710	115.400	530.713	777.761
<b>2013</b>	35.523	48.307	68.774	73.575	81.468	74.096	71.596	65.043	67.963	58.014	79.301	129.718	586.345	853.378
<b>2014</b>	32.670	35.021	47.581	53.305	58.121	60.163	59.907	60.199	66.531	66.573	80.621	146.989	473.498	767.681
<b>2015</b>	34.615	55.331	83.302	91.602	81.542	86.158	83.836	82.577	64.025	64.255	84.601	156.173	662.988	968.017
<b>2016</b>	32.713	52.825	82.948	84.887	93.904	91.540	58.533	71.556	67.593	83.000	122.309	141.912	636.499	983.720
<b>2017</b>	35.323	46.965	73.802	75.988	85.422	83.658	82.297	72.536	71.352				627.343	627.343



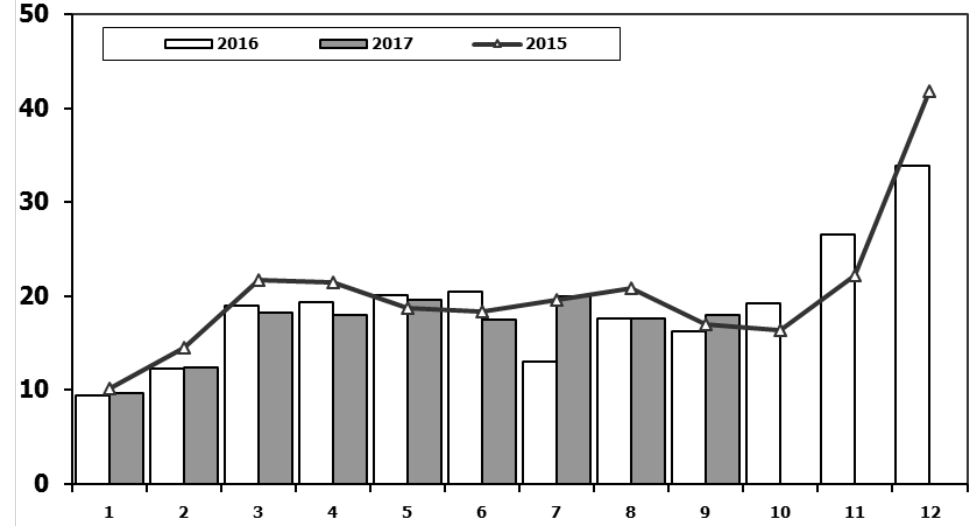
## Hafif Ticari Araç Pazarının Analizi (x1000)

### LCV Market Analysis (x1000)



## Hafif Ticari Araç Pazarı (x1000)

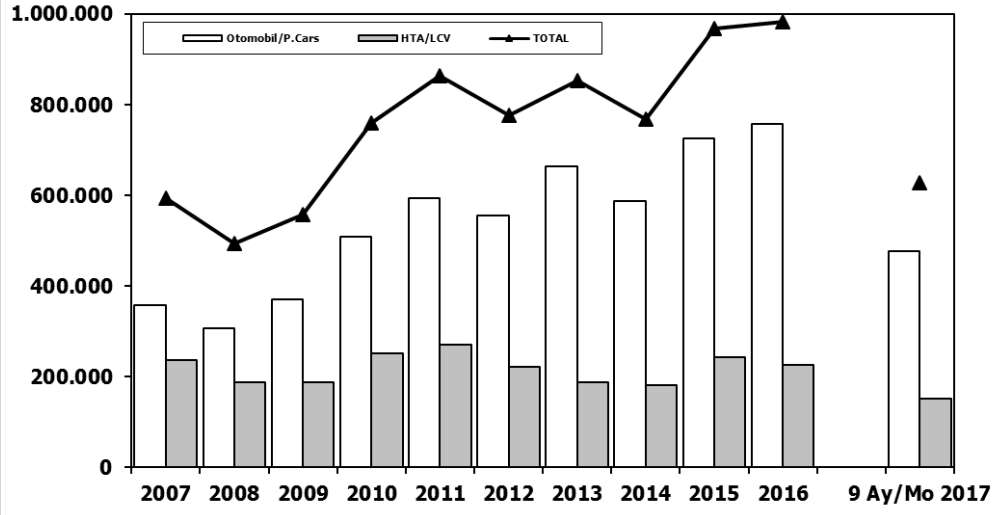
### LCV Total Market (x1000)



Aylar / Months	10 Yil Ort. 10 Yrs Avr. (x1000)	2017 (x1000)	%	1	2	3	4	5	6	7	8	9	10	11	12	9 Ay/Mo	Total	
				2007	9.931	11.972	17.554	17.162	18.871	18.548	19.244	22.089	18.919	20.156	23.670	39.181	154.290	237.297
				2008	12.939	14.055	19.502	17.388	17.121	17.600	16.626	17.568	16.879	13.096	9.052	16.199	149.678	188.025
				2009	6.433	7.250	14.489	16.438	19.003	20.048	12.208	13.072	29.235	7.205	10.181	31.745	138.176	187.307
				2010	7.501	10.521	17.811	18.397	18.910	18.810	19.946	19.542	21.337	25.545	23.901	48.908	152.775	251.129
				2011	15.024	19.659	24.380	23.860	24.344	24.859	19.526	19.531	20.165	21.913	18.706	38.953	191.348	270.920
				2012	8.468	12.135	17.614	17.304	20.403	20.218	17.773	16.912	20.269	16.498	19.413	34.474	151.096	221.481
				2013	9.688	11.493	16.989	16.576	19.085	15.806	15.884	13.432	15.038	11.029	15.184	28.519	133.991	188.723
				2014	8.302	7.854	9.769	10.536	11.742	12.885	13.305	15.068	17.269	15.759	20.926	36.935	106.730	180.350
				2015	10.117	14.514	21.626	21.391	18.664	18.392	19.618	20.824	16.937	16.301	22.204	41.833	162.083	242.421
				2016	9.355	12.237	18.973	19.269	20.072	20.429	12.967	17.579	16.253	19.254	26.526	33.868	147.134	226.782
				2017	9.634	12.307	18.186	17.990	19.623	17.494	19.913	17.646	17.929				150.722	150.722

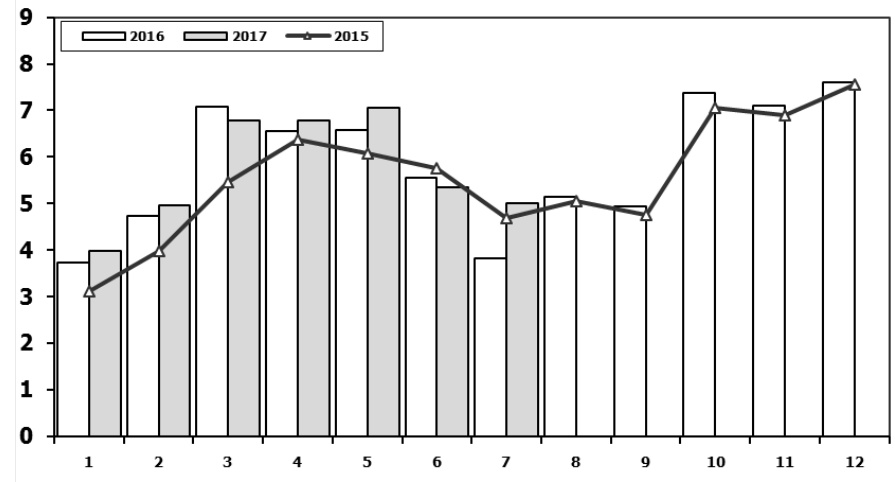
## Hafif Araç Pazarı (AYA < 3.5 Ton)

Light Vehicle Market (GVW < 3.5 Ton)



## Traktör Pazarı (x1000)

F. Tractor Market (x1000)



	1	2	3	4	5	6	7	8	9	10	11	12	7 Ay/Mo	Total
2007	2.816	2.244	3.053	2.657	3.188	3.141	2.497	2.381	3.025	2.755	3.549	3.097	19.596	34.403
2008	2.770	1.855	3.395	3.081	2.769	2.400	2.232	2.485	1.856	1.773	1.305	1.101	18.502	27.022
2009	717	572	688	1.070	1.297	1.256	1.054	1.183	1.117	1.356	1.304	2.144	6.654	13.758
2010	1.111	1.991	2.330	3.039	2.567	2.638	1.965	3.019	2.806	4.424	3.978	6.168	15.641	36.036
2011	2.975	5.242	5.927	5.358	6.016	6.335	4.534	4.051	4.140	5.828	4.943	4.992	36.387	60.341
2012	2.362	1.983	4.348	6.579	6.273	4.569	3.837	3.158	3.618	4.027	4.807	4.757	29.951	50.318
2013	2.161	2.432	4.005	4.585	5.616	3.136	4.574	3.408	4.935	4.762	5.781	6.891	26.509	52.286
2014	2.169	3.512	4.476	4.905	5.094	5.028	4.233	4.920	5.619	5.743	6.250	7.409	29.417	59.358
2015	3.124	3.984	5.460	6.383	6.078	5.748	4.677	5.044	4.765	7.049	6.898	7.564	35.454	66.774
2016	3.739	4.731	7.067	6.546	6.575	5.543	3.833	5.134	4.945	7.372	7.090	7.603	38.034	70.178
2017	3.974	4.964	6.773	6.780	7.057	5.356	5.003						39.907	39.907

Kaynak: TÜİK trafik kayıtları.

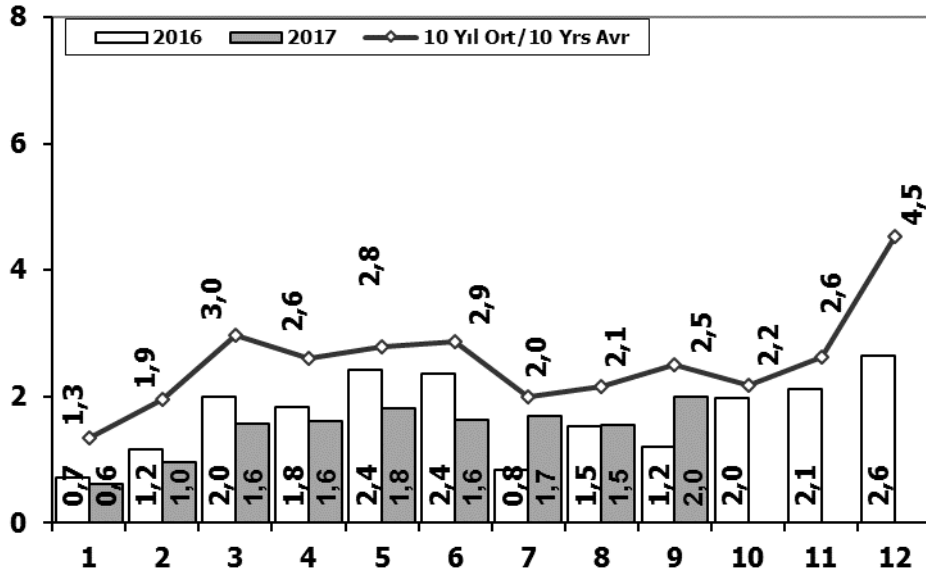
Rakamlar, son iki model yılına ait traktör tescillerinden oluşmaktadır.

Source: Turkish Statistical Institute – Traffic registrations

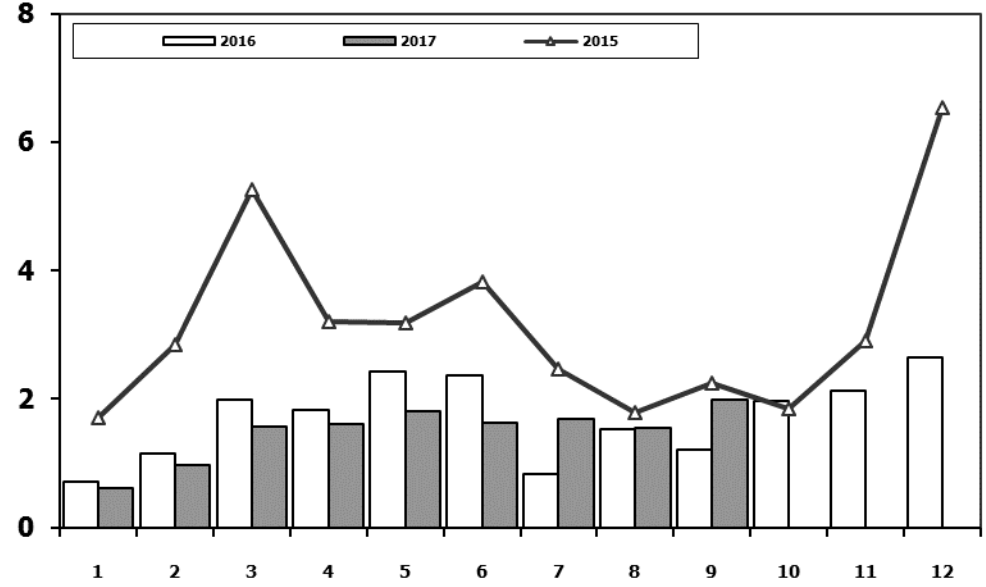
Data represents the last two model year's farm tractors registration figures

	2007	2008	2009	2010	2011	2012	2013	2014	2015	2016	9 Ay/Mo 2017
Otomobil/P.Cars	357.465	305.998	369.819	509.784	593.519	556.280	664.655	587.331	725.596	756.938	476.621
HTA/LCV	237.297	188.025	187.307	251.129	270.920	221.481	188.723	180.350	242.421	226.782	150.722
TOTAL	594.762	494.023	557.126	760.913	864.439	777.761	853.378	767.681	968.017	983.720	627.343
HTA/LCV (%)	40	38	34	33	31	28	22	23	25	23	24

## Kamyon Pazarının Analizi (x1000) AYA > 5 Ton Truck Market Analysis (x1000) GVW > 5 Ton



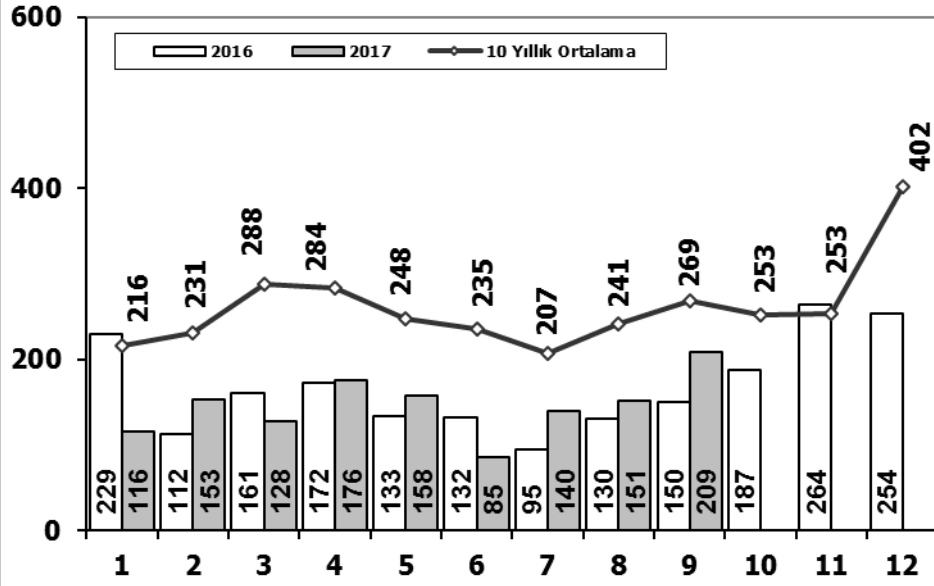
## Kamyon Pazarı (x1000) AYA > 5 Ton Truck Market (x1000) GVW > 5 Ton



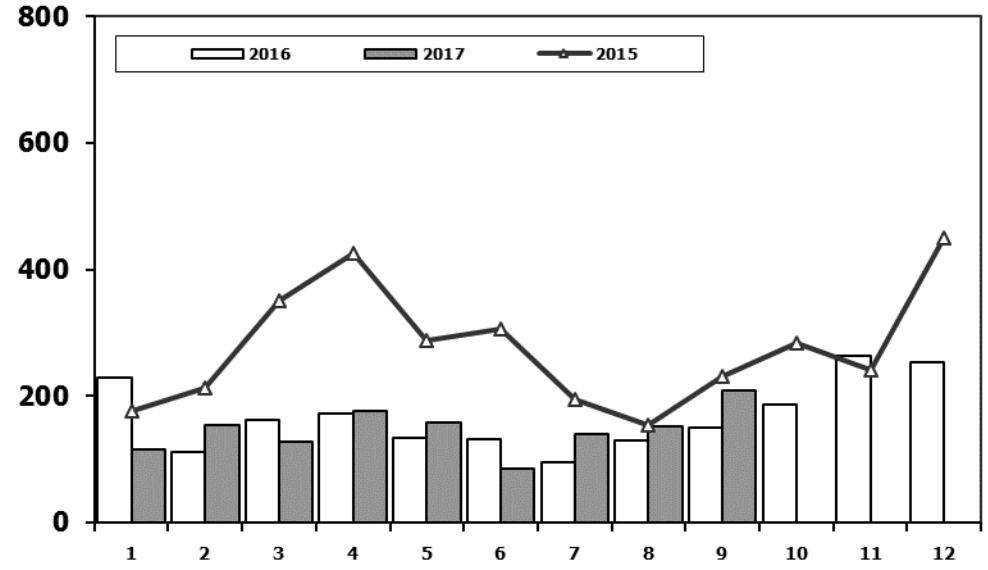
Aylar / Months	10 Yil Ort. 10 Yrs Avr. (x1000)	2017 (x1000)	%
1	1,3	0,6	-54,8
2	1,9	1,0	-50,4
3	3,0	1,6	-47,1
4	2,6	1,6	-38,0
5	2,8	1,8	-35,3
6	2,9	1,6	-43,3
7	2,0	1,7	-15,2
8	2,1	1,5	-28,1
9	2,5	2,0	-20,3
<b>Total</b>	<b>21,1</b>	<b>13,4</b>	<b>-36,6</b>

	1	2	3	4	5	6	7	8	9	10	11	12	9 Ay/Mo	Total
<b>2007</b>	1.554	2.055	3.065	2.940	2.865	2.613	2.372	3.145	2.988	2.886	3.258	4.444	23.597	34.185
<b>2008</b>	1.797	2.309	2.621	2.578	2.459	2.526	2.067	2.377	2.390	1.790	1.512	1.834	21.124	26.260
<b>2009</b>	771	759	1.034	1.342	1.355	1.651	1.156	1.205	1.780	866	981	2.015	11.053	14.915
<b>2010</b>	777	968	1.772	1.807	1.966	2.205	2.093	2.446	2.444	3.071	3.136	5.677	16.478	28.362
<b>2011</b>	2.552	3.292	4.418	3.754	3.803	3.749	1.996	2.478	3.081	2.774	3.108	5.787	29.123	40.792
<b>2012</b>	1.375	2.159	3.595	2.697	3.321	3.250	2.450	2.277	2.991	2.244	3.006	5.000	24.115	34.365
<b>2013</b>	1.077	1.931	3.127	2.720	3.145	2.951	2.411	1.845	2.554	1.801	3.173	5.025	21.761	31.760
<b>2014</b>	1.117	1.949	2.818	3.092	3.405	3.438	2.083	2.390	3.281	2.494	3.028	6.313	23.573	35.408
<b>2015</b>	1.705	2.841	5.270	3.208	3.190	3.824	2.463	1.798	2.244	1.848	2.902	6.540	26.543	37.833
<b>2016</b>	718	1.154	1.984	1.835	2.420	2.358	830	1.529	1.204	1.962	2.123	2.640	14.032	20.757
<b>2017</b>	607	964	1.570	1.611	1.807	1.621	1.689	1.546	1.990				13.405	13.405

## Midibüs Pazarının Analizi (7-9 mt / 25-35 Kişilik) Midibus Market Analysis (7-9 mt / 25-35 Passengers)



## Midibüs Pazarı (7-9 mt / 25-35 Kişilik Midibüs) Midibus Market (7-9 mt / 25-35 Passengers)

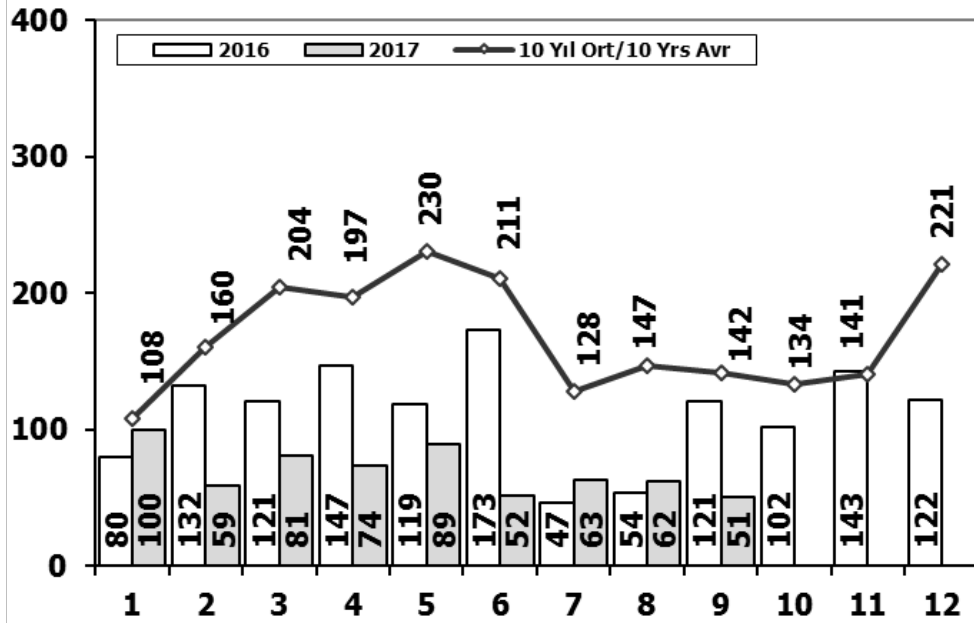


	1	2	3	4	5	6	7	8	9	10	11	12	9 Ay/Mo	Total
2007	207	272	404	238	302	283	164	365	399	279	283	465	2.634	3.661
2008	391	476	436	512	419	331	368	380	341	352	246	270	3.654	4.522
2009	154	124	160	220	174	198	160	175	168	143	206	323	1.533	2.205
2010	155	131	185	167	140	138	129	246	236	206	202	437	1.527	2.372
2011	138	195	294	316	280	258	211	305	301	276	260	270	2.298	3.104
2012	179	257	277	229	257	239	216	249	325	269	189	398	2.228	3.084
2013	191	268	289	276	283	241	367	235	305	392	415	697	2.455	3.959
2014	335	265	326	280	206	223	161	174	229	140	226	454	2.199	3.019
2015	177	213	350	425	288	306	195	154	231	283	240	450	2.339	3.312
2016	229	112	161	172	133	132	95	130	150	187	264	254	1.314	2.019
2017	116	153	128	176	158	85	140	151	209				1.316	1.316

Aylar / Months	10 Yıl Ort. / 10 Yrs Avr.	2017	%
1	216	116	-46
2	231	153	-34
3	288	128	-56
4	284	176	-38
5	248	158	-36
6	235	85	-64
7	207	140	-32
8	241	151	-37
9	269	209	-22
Total	2.218	1.316	-41

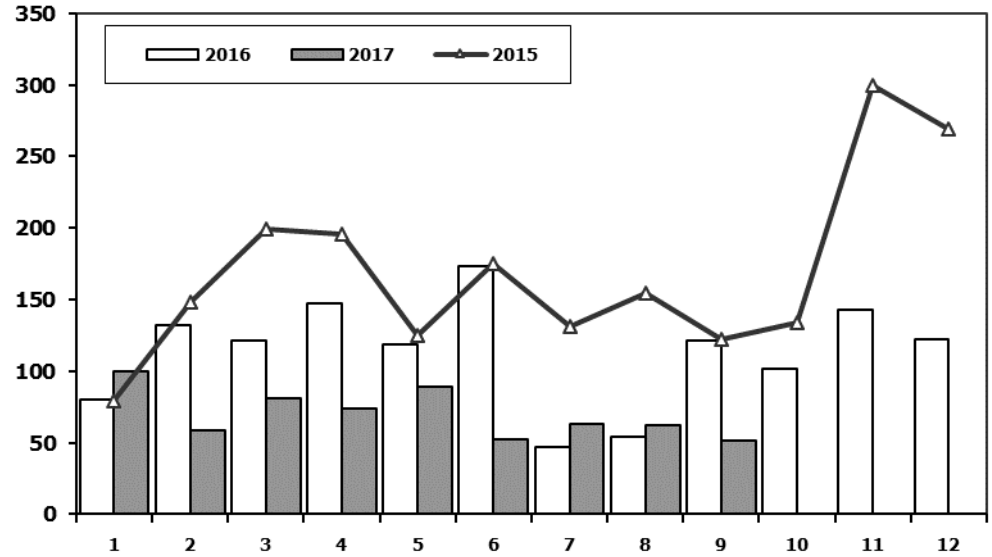
## Otobüs Pazarının Analizi

Bus Market Analysis



## Otobüs Pazarı

Bus Market

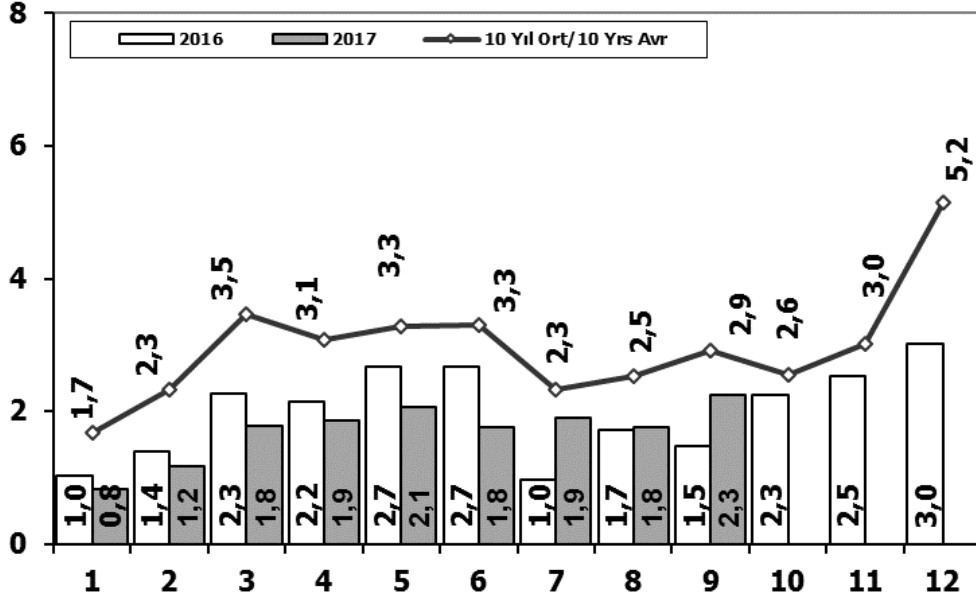


Aylar / Months	10 Yıl Ort. 10 Yrs Avr.	2017	%
1	108	100	-7
2	160	59	-63
3	204	81	-60
4	197	74	-62
5	230	89	-61
6	211	52	-75
7	128	63	-51
8	147	62	-58
9	142	51	-64
<b>Total</b>	<b>1.527</b>	<b>631</b>	<b>-59</b>

	1	2	3	4	5	6	7	8	9	10	11	12	9 Ay/Mo	Total
2007	72	191	129	89	150	91	91	103	110	168	163	241	1.026	1.598
2008	77	85	108	176	151	212	101	165	166	121	141	236	1.241	1.739
2009	100	221	226	224	167	186	85	103	58	75	53	125	1.370	1.623
2010	23	42	102	159	145	151	151	189	107	99	106	251	1.069	1.525
2011	76	198	218	306	364	283	113	189	132	169	170	314	1.879	2.532
2012	120	87	201	139	379	225	152	174	252	226	140	315	1.729	2.410
2013	349	425	498	444	525	483	352	260	215	192	128	156	3.551	4.027
2014	103	73	239	89	177	128	55	76	139	52	62	185	1.079	1.378
2015	79	148	199	196	125	175	131	154	122	134	300	269	1.329	2.032
2016	80	132	121	147	119	173	47	54	121	102	143	122	994	1.361
2017	100	59	81	74	89	52	63	62	51				631	631

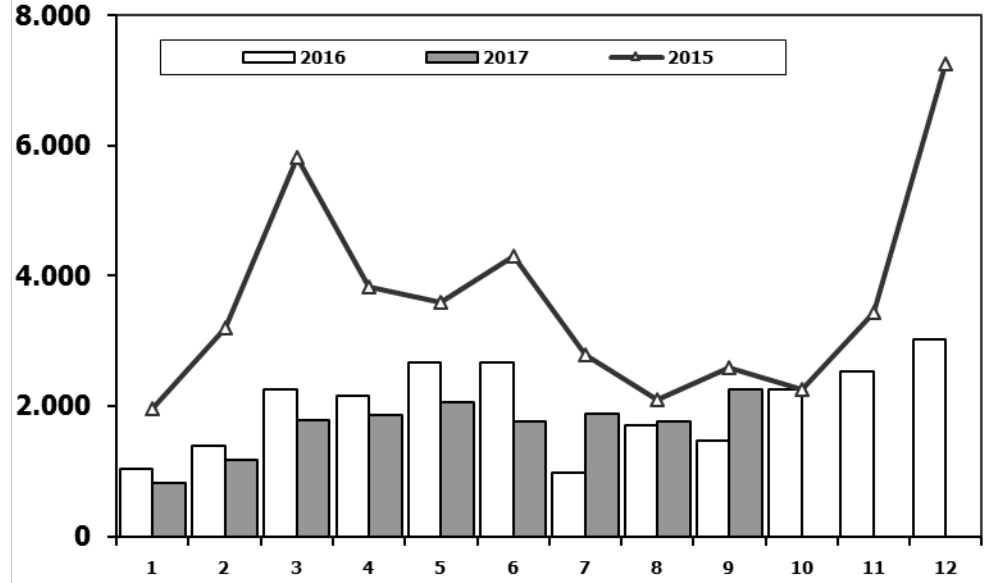
## Ağır Ticari Araç Pazarının Analizi (x1000)

### HCV Market Analysis (x1000)



## Ağır Ticari Araç Pazarı (x1000)

### HCV Market (x1000)

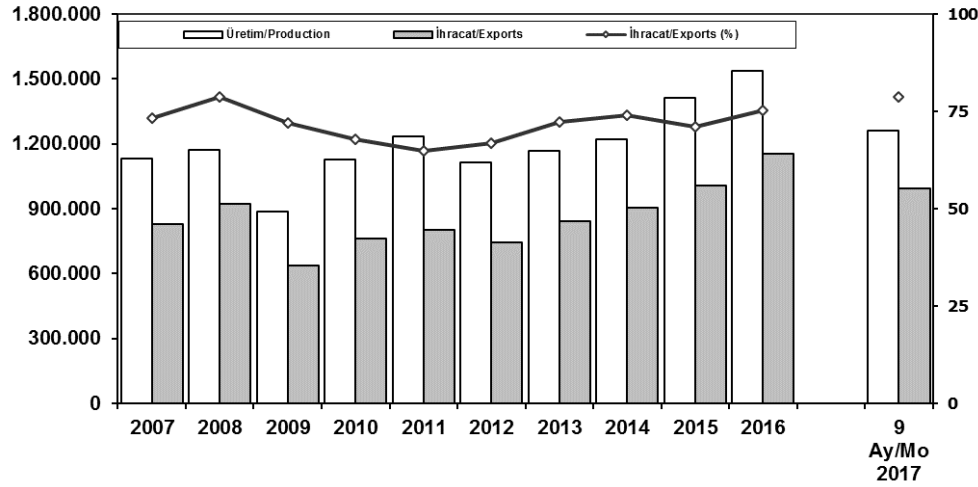


Aylar / Months	10 Yıl Ort. 10 Yrs Avr. (x1000)	2017 (x1000)	%
1	1,7	0,8	-50,7
2	2,3	1,2	-49,6
3	3,5	1,8	-48,6
4	3,1	1,9	-39,5
5	3,3	2,1	-37,2
6	3,3	1,8	-46,8
7	2,3	1,9	-18,7
8	2,5	1,8	-30,7
9	2,9	2,3	-22,6
<b>Total</b>	<b>24,9</b>	<b>15,4</b>	<b>-38,3</b>

	1	2	3	4	5	6	7	8	9	10	11	12	9 Ay/Mo	Total
<b>2007</b>	1.833	2.518	3.598	3.267	3.317	2.987	2.627	3.613	3.497	3.333	3.704	5.150	27.257	39.444
<b>2008</b>	2.265	2.870	3.165	3.266	3.029	3.069	2.536	2.922	2.897	2.263	1.899	2.340	26.019	32.521
<b>2009</b>	1.025	1.104	1.420	1.786	1.696	2.035	1.401	1.483	2.006	1.084	1.240	2.463	13.956	18.743
<b>2010</b>	955	1.141	2.059	2.133	2.251	2.494	2.373	2.881	2.787	3.376	3.444	6.365	19.074	32.259
<b>2011</b>	2.766	3.685	4.930	4.376	4.447	4.290	2.320	2.972	3.514	3.219	3.538	6.371	33.300	46.428
<b>2012</b>	1.674	2.503	4.073	3.065	3.957	3.714	2.818	2.700	3.568	2.739	3.335	5.713	28.072	39.859
<b>2013</b>	1.617	2.624	3.914	3.440	3.953	3.675	3.130	2.340	3.074	2.385	3.716	5.878	27.767	39.746
<b>2014</b>	1.555	2.287	3.383	3.461	3.788	3.789	2.299	2.640	3.649	2.686	3.316	6.952	26.851	39.805
<b>2015</b>	1.961	3.202	5.819	3.829	3.603	4.305	2.789	2.106	2.597	2.265	3.442	7.259	30.211	43.177
<b>2016</b>	1.027	1.398	2.266	2.154	2.672	2.663	972	1.713	1.475	2.251	2.530	3.016	16.340	24.137
<b>2017</b>	823	1.176	1.779	1.861	2.054	1.758	1.892	1.759	2.250				15.352	15.352

## İhracat/Üretim (2007-2017) (Traktör dahil)

Exports/Production (2007-2017) (Including F. Tractor)



## Taşıt Araçları İhracatı (2015-2017)

Motor Vehicle Exports (2015-2017)

SEKTÖR/SECTOR	2015	2016	2016	2017	2017/2016 (%)
			9 Ay-9 Mo		
OTOMOBİL/ P.Cars	604.683	745.709	500.723	689.176	38
TİCARİ ARAÇLAR / CV	387.652	395.673	295.176	295.228	0
* Kamyonet/Pick-Up	341.834	347.949	262.578	250.406	-5
* Minibüs/Minibus	38.255	34.790	22.827	33.582	47
* Kamyon/Truck	1.408	5.521	4.258	5.530	30
* Midibüs/Midibus	447	915	704	447	-37
* Otobüs/Bus	5.708	6.498	4.809	5.263	9
<b>TAŞIT ARAÇLARI /MV TOTAL</b>	<b>992.335</b>	<b>1.141.382</b>	<b>795.899</b>	<b>984.404</b>	<b>24</b>
TRAKTÖR/F.TRACTOR	14.932	13.651	10.176	10.166	0
<b>TOTAL</b>	<b>1.007.267</b>	<b>1.155.033</b>	<b>806.075</b>	<b>994.570</b>	<b>23</b>

	2007	2008	2009	2010	2011	2012	2013	2014	2015	2016	9 Ay/Mo 2017
Üretim/Production	1.132.951	1.171.917	884.466	1.124.982	1.234.637	1.115.233	1.166.043	1.218.848	1.410.034	1.536.673	1.262.572
İhracat/Exports	829.879	920.763	637.855	763.670	801.112	745.354	843.467	902.194	1.007.267	1.155.033	994.570
İhracat/Exports (%)	73	79	72	68	65	67	72	74	71	75	79

## Otomotiv Ana ve Yan Sanayii İhracatı (ABD \$)

CBU and CKD Exports - \$

Sektör / Sector	2013	2014	2015	2016	2016	2017	2017/2016 (%)
					Ocak-Eylül / January-September		
<b>Yan Sanayi İhracatı/Total Component Exports</b>	<b>9.065.017.539</b>	<b>9.504.013.791</b>	<b>8.641.977.425</b>	<b>8.947.915.672</b>	<b>6.705.141.783</b>	<b>7.156.041.566</b>	<b>7%</b>
İç ve Dış Lastik / Tyres	1.130.005.891,78	1.126.709.610,14	960.550.807	978.284.060	738.276.640	835.550.807	13%
Emniyet Camı / Safety Glasses	135.230.309,67	143.208.298,99	124.564.841	119.569.736	89.955.663	100.447.470	12%
Motor (Engine)	319.294.885,46	171.893.752,32	221.897.271	370.561.589	268.048.298	326.862.292	22%
Akümülatör / Batteries	306.451.449,47	289.101.198,21	220.462.827	224.590.660	146.222.015	190.466.754	30%
Diğer Aksam ve Parça / Spare Parts&Components	7.174.035.002,35	7.773.100.931,83	7.114.501.679	7.254.909.627	5.462.639.167	5.702.714.243	4%
<b>Ana Sanayi İhracatı/Total Vehicle Exports</b>	<b>12.491.591.365</b>	<b>13.259.499.977</b>	<b>12.977.346.859</b>	<b>15.302.074.705</b>	<b>10.650.107.754</b>	<b>13.952.129.064</b>	<b>31%</b>
Otobüs / Bus	937.790.962,87	985.983.007,01	1.023.556.746	1.190.475.986	881.792.027	944.530.838	7%
Midibüs-Minibüs / Minibus- Minibus	147.769.644,17	97.685.509,12	130.195.838	238.911.957	160.961.358	166.417.682	3%
Otomobil (P. Cars)	6.855.475.589,83	7.258.361.005,24	6.881.867.274	8.336.946.503	5.472.942.230	8.643.557.851	58%
Kamyon-Kamyonet/HCV-LCV	3.918.798.755,31	4.201.760.813,55	4.264.018.829	4.616.562.139	3.426.837.987	3.464.553.264	1%
Römork ve Yarı Römork/Trailer-Semi Trailer	218.385.731,69	252.354.014,20	252.397.167	265.323.711	210.837.780	165.359.931	-22%
Çekici/Truck-Tractor	77.907.406,95	38.396.524,81	48.108.959	316.355.575	251.610.656	326.261.418	30%
Tarım Traktörü/Farm Tractor	335.463.274,61	424.959.103,39	377.202.046	337.498.834	245.125.715	241.448.078	-2%
<b>Toplam/Total</b>	<b>21.556.608.904</b>	<b>22.763.513.769</b>	<b>21.619.324.284</b>	<b>24.249.990.377</b>	<b>17.355.249.537</b>	<b>21.108.170.629</b>	<b>22%</b>

Kaynak: Uludağ İhracatçı Birlikleri . UİB tarafından OSD için özel olarak analiz edilen Otomotiv İhracatı kapsamında; UİB Türkiye Genel Otomotiv Endüstrisi sınıflandırmasına kıyasla "Römork ve Yarı Römork", "Tarım Traktörü" verileri dahil edilmekte; "Kullanılmış Araçlar", "İki Tekerlekli Taşıtlar", "Demiryolu Taşıtları" hariç tutulmaktadır.

Source: Uludağ Exporters Association - Special Analyze for OSD

Compared to Turkish General Automotive Industry classification, this special analyze includes: farms tractors, trailers and semi-trailers, does not include: used vehicles, two-wheeled vehicles and railway vehicles.

## Sektör Bazında İhracat (1000 \$)

Exports on Sectorial Basis

SEKTÖRLER (1.000 \$)	EYLÜL				OCAK - EYLÜL				SON 12 AYLIK			
	2016	2017	Değişim ('17/'16)	Pay(17)	2016	2017	Değişim ('17/'16)	Pay(17)	2016	2017	Değişim ('17/'16)	Pay(17)
Otomotiv Endüstrisi	1.940.446	2.152.110	10,9	19,0	17.076.789	20.772.791	21,6	18,1	22.865.058	27.583.341	20,6	18,0
Hazırgiyim ve Konfeksiyon	1.318.761	1.294.611	-1,8	11,4	12.881.515	12.649.363	-1,8	11,0	17.262.813	16.724.132	-3,1	10,9
Kimyevi Maddeler ve Mamulleri	1.095.817	1.280.260	16,8	11,3	10.264.006	11.837.988	15,3	10,3	14.126.562	15.511.238	9,8	10,1
Çelik	716.702	746.656	4,2	6,6	6.651.949	8.206.340	23,4	7,2	8.840.953	10.627.639	20,2	6,9
Elektrik Elektronik ve Hizmet	803.563	868.672	8,1	7,7	7.234.306	7.394.473	2,2	6,4	10.135.315	10.136.407	0,0	6,6
Tekstil ve Hammaddeleri	654.843	664.711	1,5	5,9	5.836.554	5.946.624	1,9	5,2	7.876.202	7.977.025	1,3	5,2
Demir ve Demir Dışı Metaller	483.422	522.426	8,1	4,6	4.429.377	4.917.901	11,0	4,3	6.009.417	6.434.371	7,1	4,2
Hububat, Bakliyat, Yağlı Tohumlar ve Mamulleri	477.844	474.500	-0,7	4,2	4.573.088	4.666.992	2,1	4,1	6.310.012	6.452.883	2,3	4,2
Makine ve Aksamları	403.847	481.126	19,1	4,2	3.912.549	4.359.893	11,4	3,8	5.358.000	5.747.255	7,3	3,8
Madencilik Ürünleri	322.012	379.271	17,8	3,3	2.697.582	3.489.747	29,4	3,0	3.613.783	4.579.409	26,7	3,0
<b>TOPLAM</b>	<b>10.410.538</b>	<b>11.337.306</b>	<b>8,9</b>	<b>100,0</b>	<b>103.674.864</b>	<b>114.660.646</b>	<b>10,6</b>	<b>100,0</b>	<b>140.347.711</b>	<b>153.024.266</b>	<b>9,0</b>	<b>100,0</b>

Kaynak: TİM

Eylül ayı ihracat verilerine, "İhracatçı Birlikleri Kaydından Muaf İhracat" verisi dahil değildir.

Source: TİM

Exportation data for September does not include "Exempted Exports from the Exporters' Union Registration".

### First 3 Sectors:

- 1- Automotive Industry
- 2- Ready Wear and Confection
- 3- Chemical Articles and Products

### Firma Bazında İhracat (Adet)

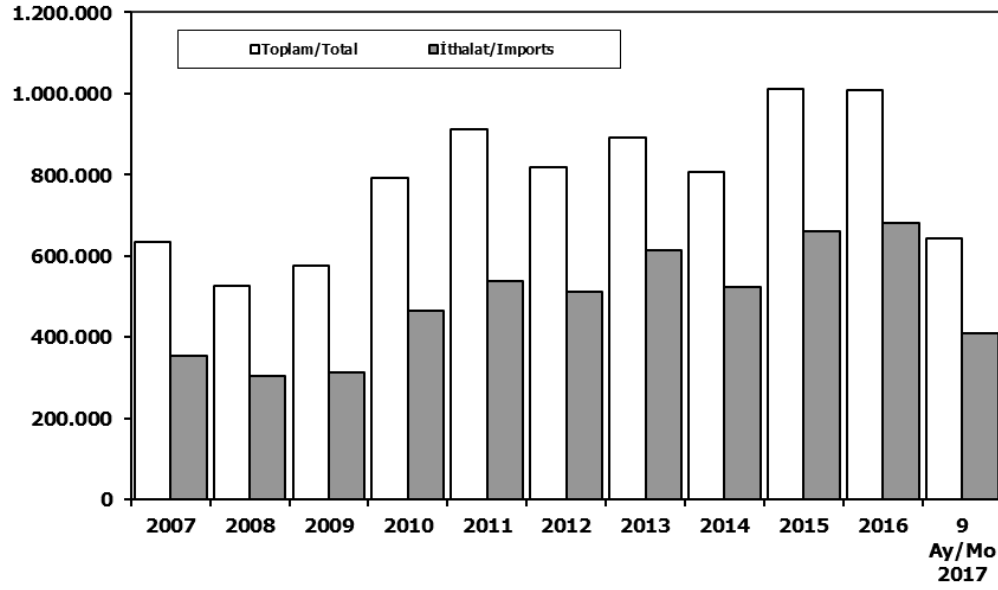
Export Of Member Companies (Unit)

FİRMALAR Companies	2015	2016	Ocak-Eylül 9 Months	
			2016	2017
OYAK RENAULT	270.299	270.088	191.534	213.187
FORD OTOSAN	252.571	256.706	188.010	211.189
TOFAŞ	173.743	279.444	195.552	206.639
TOYOTA	81.962	109.184	55.896	181.895
HYUNDAI ASSAN	201.276	207.234	151.310	152.282
TÜRK TRAKTÖR	14.122	12.625	9.460	9.268
M. BENZ TÜRK	4.252	8.307	6.559	7.497
HONDA TÜRKİYE	2.220	2.914	1.802	6.796
KARSAN	3.067	3.629	2.428	1.863
MAN TÜRKİYE	1.493	1.717	1.257	1.490
HATTAT TARIM	810	1.026	716	898
TEMSA GLOBAL	441	653	476	680
OTOKAR	720	833	564	498
A.I.O.S.	291	673	511	388
<b>GENEL TOPLAM</b>	<b>1.007.267</b>	<b>1.155.033</b>	<b>806.075</b>	<b>994.570</b>

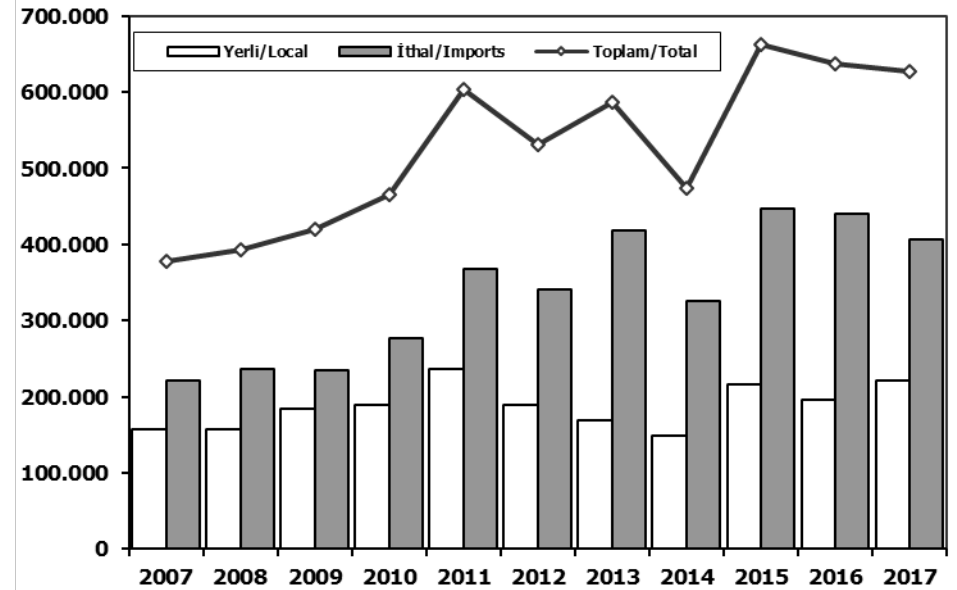
Kaynak: OSD



## Toplam Pazar (Otomobil+T.Araç) Total Market (P.Cars+C.V)



## Hafif Araçlar Pazarı (2007-2017 Ocak-Eylül) LV Market (2007-2017 January-September)

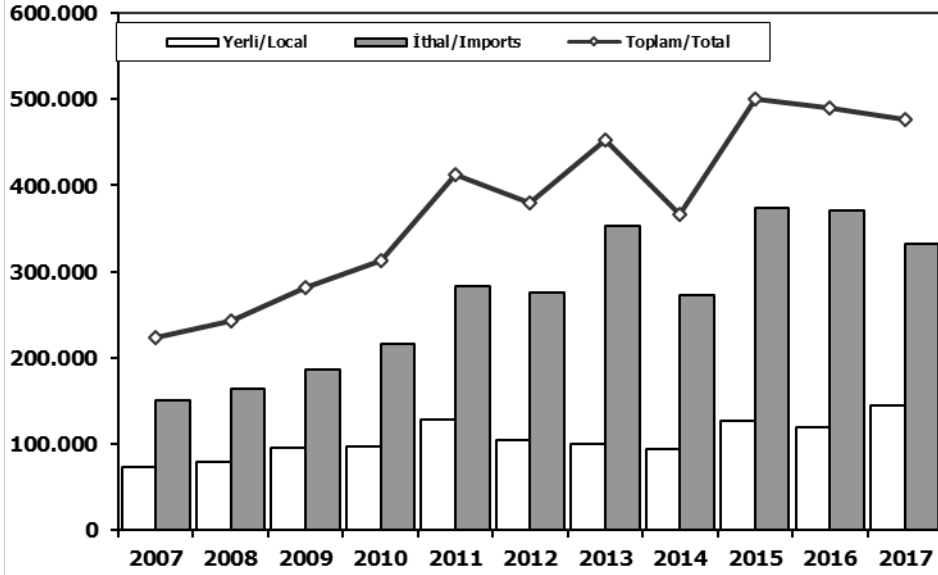


	2007	2008	2009	2010	2011	2012	2013	2014	2015	2016	9 Ay/Mo 2016	9 Ay/Mo 2017
<b>Toplam/Total</b>	634.206	526.544	575.869	793.172	910.867	817.620	893.124	807.486	1.011.194	1.007.857	652.839	642.695
<b>İthalat/Imports</b>	355.752	306.087	313.921	465.408	538.532	511.694	615.609	522.842	660.045	681.308	446.060	411.078
<b>İthalat/Imports (%)</b>	56	58	55	59	59	63	69	65	65	68	68	64

	2007	2008	2009	2010	2011	2012	2013	2014	2015	2016	2017
<b>Yerli/Local</b>	156.668	156.560	184.560	188.639	235.848	189.886	168.578	148.365	215.913	195.860	221.527
<b>İthal/Imports</b>	221.130	236.248	234.648	276.539	367.603	340.827	417.767	325.133	447.075	440.639	405.816
<b>Toplam/Total</b>	377.798	392.808	419.208	465.178	603.451	530.713	586.345	473.498	662.988	636.499	627.343
<b>İthalat/Imports (%)</b>	59	60	56	59	61	64	71	69	67	69	65

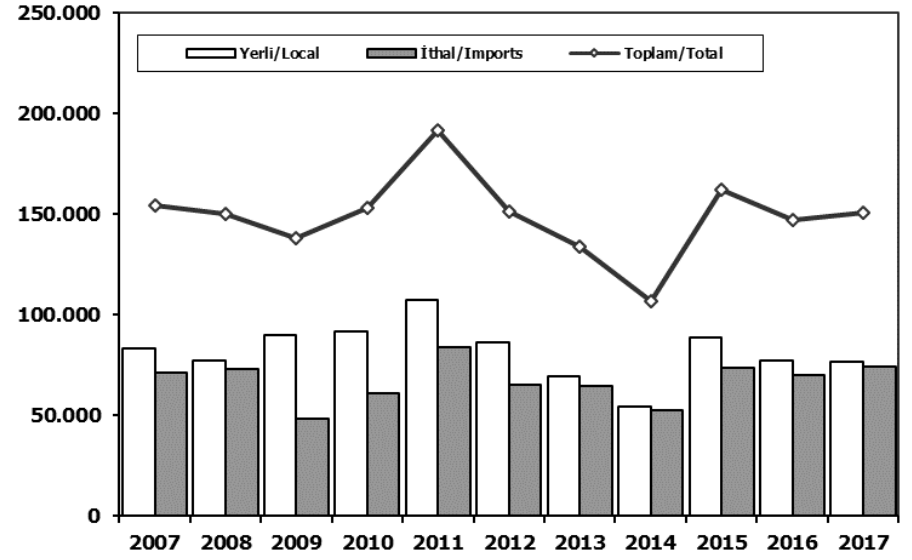
## Otomobil Pazarı (2007-2017 Ocak-Eylül)

P.Cars Market (2007-2017 January-September)



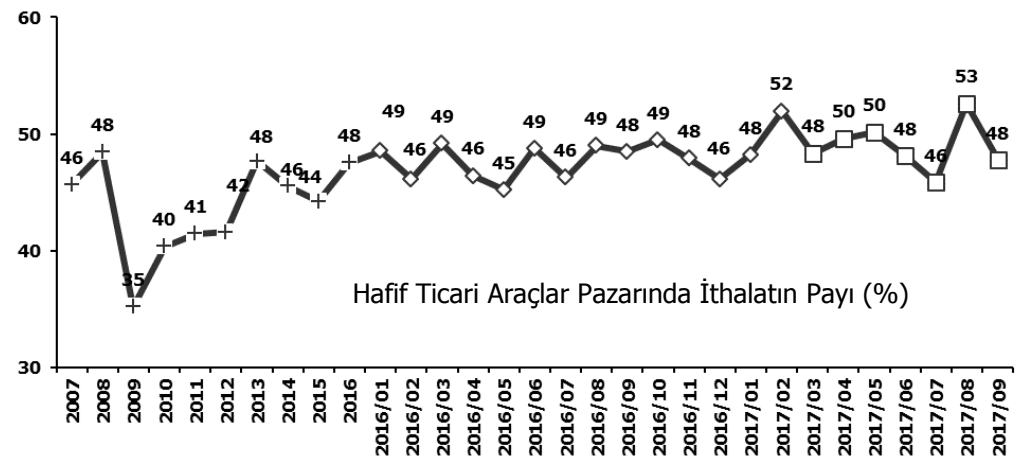
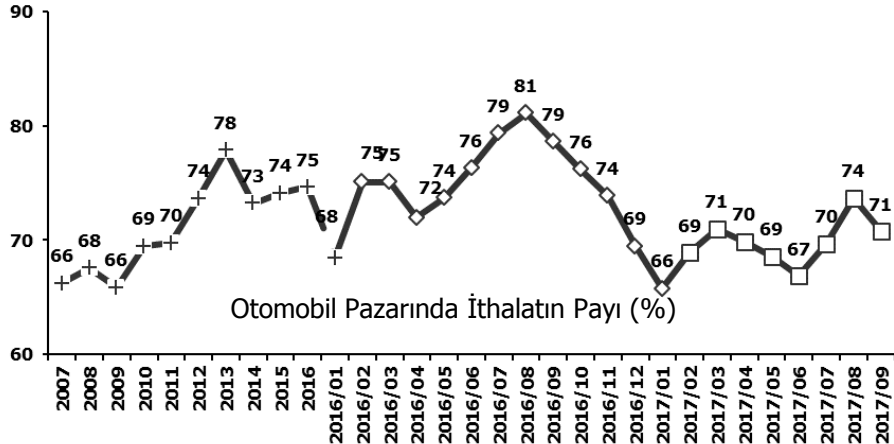
## Hafif Ticari Araçlar Pazarı (2007-2017 Ocak-Eylül)

Light Commercial Vehicle Market (2007-2017 January-September)



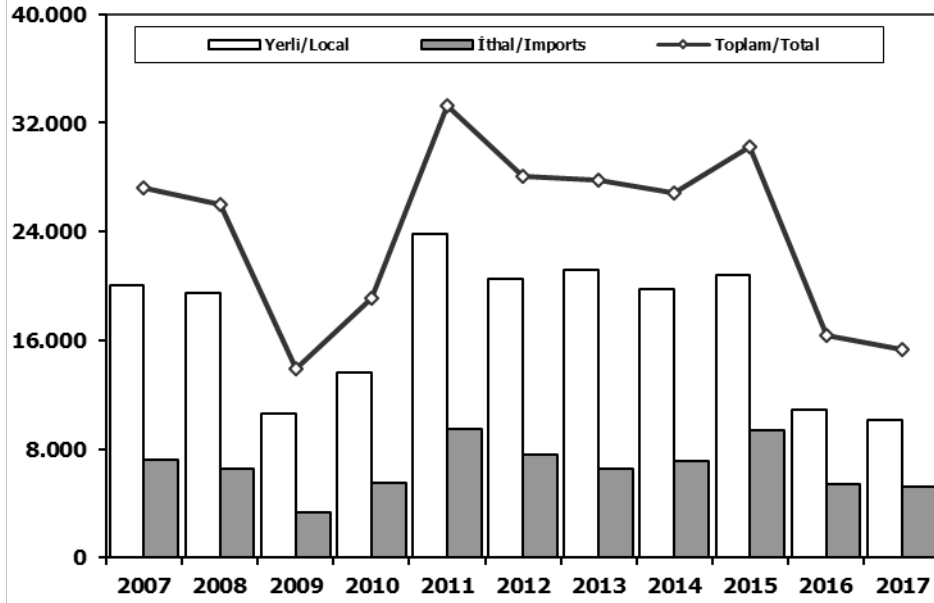
	2007	2008	2009	2010	2011	2012	2013	2014	2015	2016	2017
Yerli/Local	73.551	79.661	94.733	96.921	128.497	103.676	99.279	94.199	127.382	118.694	144.794
İthal/Imports	149.957	163.469	186.299	215.482	283.606	275.941	353.075	272.569	373.523	370.671	331.827
Toplam/Total	223.508	243.130	281.032	312.403	412.103	379.617	452.354	366.768	500.905	489.365	476.621
İthalat/Imports (%)	67	67	66	69	69	73	78	74	75	76	70

	2007	2008	2009	2010	2011	2012	2013	2014	2015	2016	2017
Yerli/Local	83.117	76.899	89.827	91.718	107.351	86.210	69.299	54.166	88.531	77.166	76.733
İthal/Imports	71.173	72.779	48.349	61.057	83.997	64.886	64.692	52.564	73.552	69.968	73.989
Toplam/Total	154.290	149.678	138.176	152.775	191.348	151.096	133.991	106.730	162.083	147.134	150.722
İthalat/Imports (%)	46	49	35	40	44	43	48	49	45	48	49



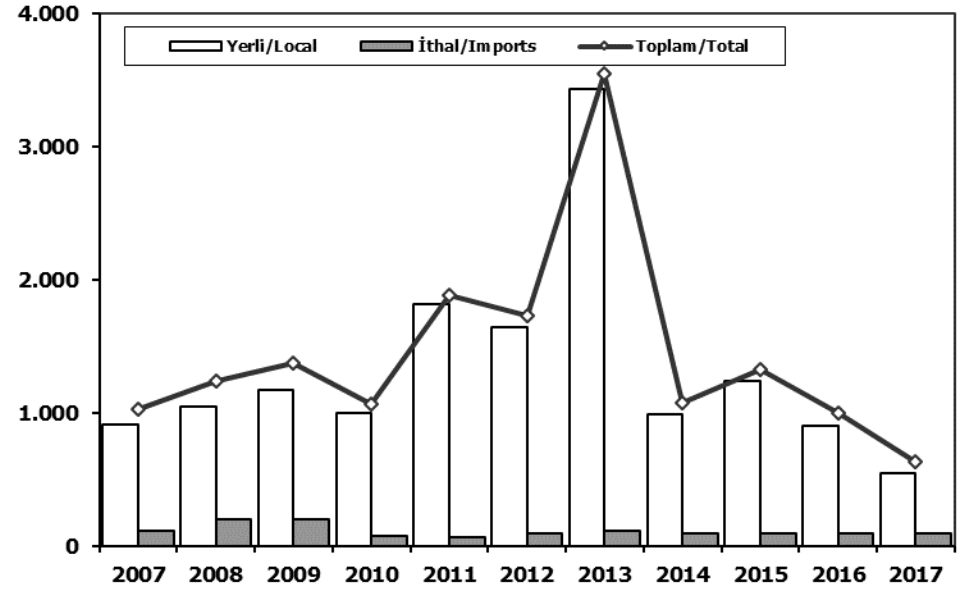
## Ağır Ticari Araçlar Pazarı (2007-2017 Ocak-Eylül)

### HCV Market (2007-2017 January-September)



## Otobüs Pazarı (2007-2017 Ocak-Eylül)

### Bus Market (2007-2017 January-September)

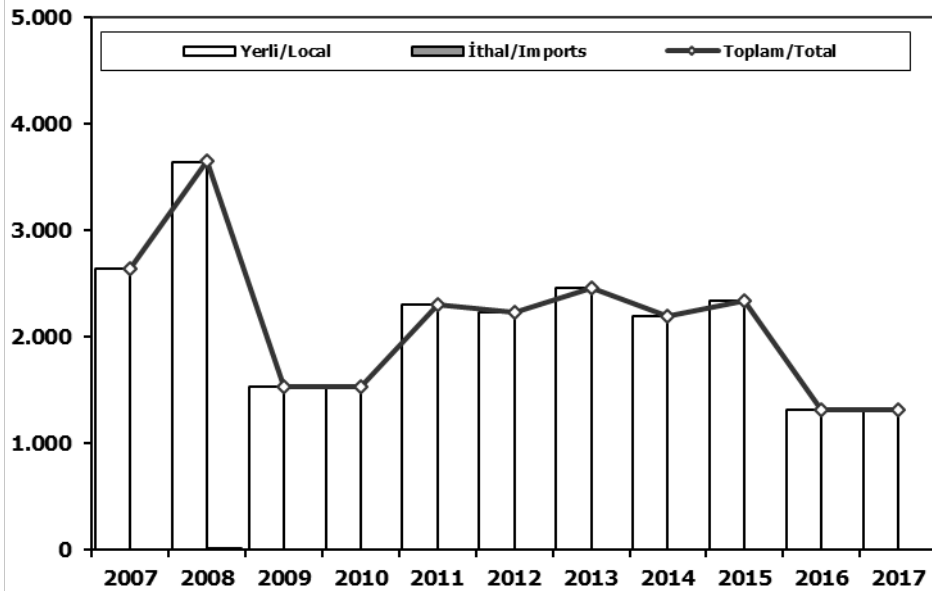


	2007	2008	2009	2010	2011	2012	2013	2014	2015	2016	2017
<b>Yerli/Local</b>	20.062	19.440	10.649	13.592	23.815	20.530	21.176	19.758	20.796	10.919	10.090
<b>İthal/Imports</b>	7.195	6.579	3.307	5.482	9.485	7.542	6.591	7.093	9.415	5.421	5.262
<b>Toplam/Total</b>	27.257	26.019	13.956	19.074	33.300	28.072	27.767	26.851	30.211	16.340	15.352
<b>İthalat/Imports (%)</b>	26	25	24	29	28	27	24	26	31	33	34

	2007	2008	2009	2010	2011	2012	2013	2014	2015	2016	2017
<b>Yerli/Local</b>	913	1.043	1.169	993	1.811	1.640	3.436	989	1.239	904	541
<b>İthal/Imports</b>	113	198	201	76	68	89	115	90	90	90	90
<b>Toplam/Total</b>	1.026	1.241	1.370	1.069	1.879	1.729	3.551	1.079	1.329	994	631
<b>İthalat/Imports (%)</b>	11	16	15	7	4	5	3	8	7	9	14

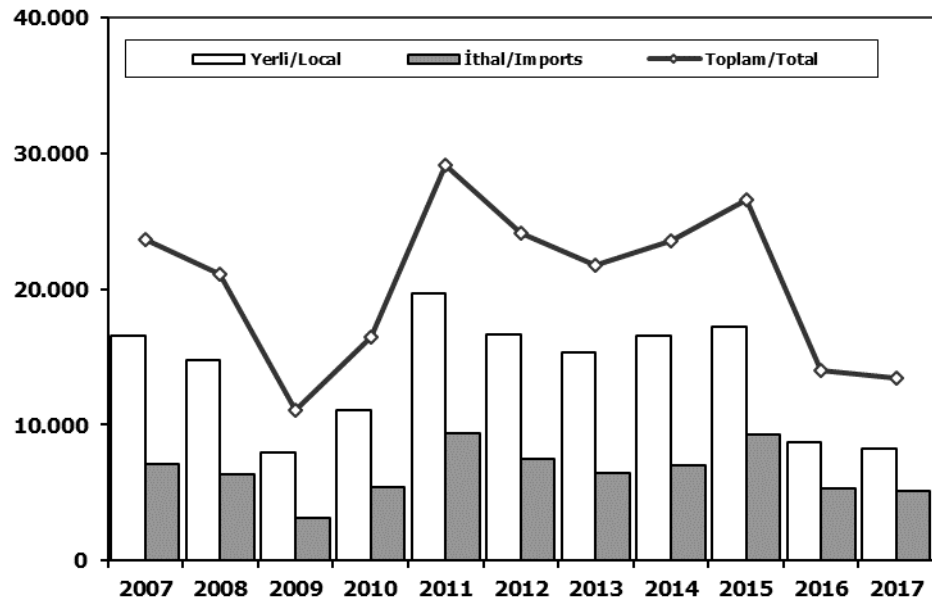
## Midibüs Pazarı (2007-2017 Ocak-Eylül) (7-9 mt / 25-35 Kişilik)

Midibus Market (2007-2017 January-September) (7-9 mt / 25-35 Passengers)



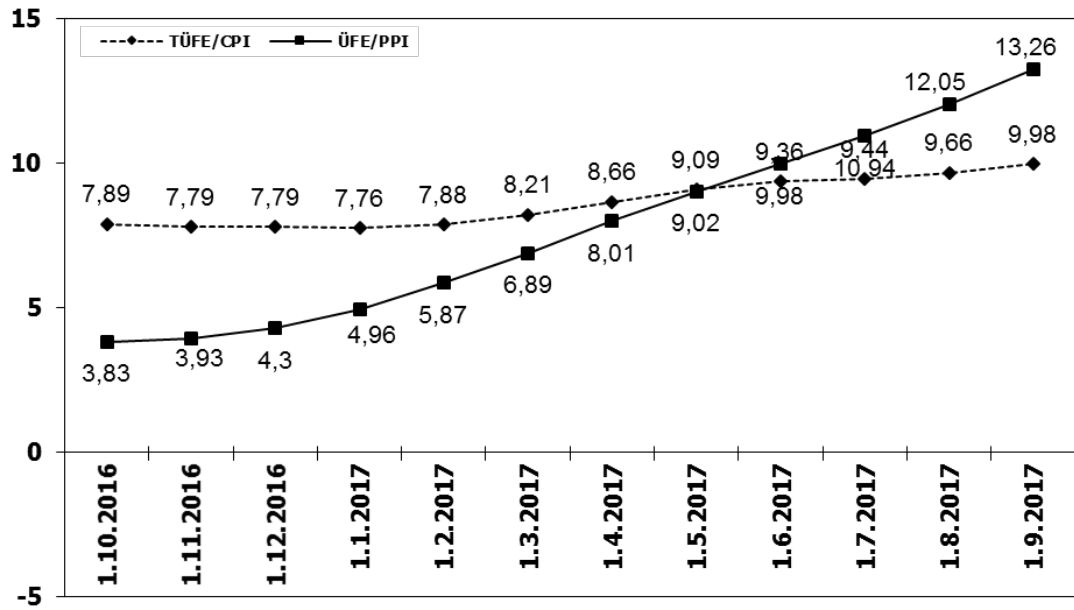
## Kamyon Pazarı (2007-2017 Ocak-Eylül)

Truck Market (2007-2017 January-September)

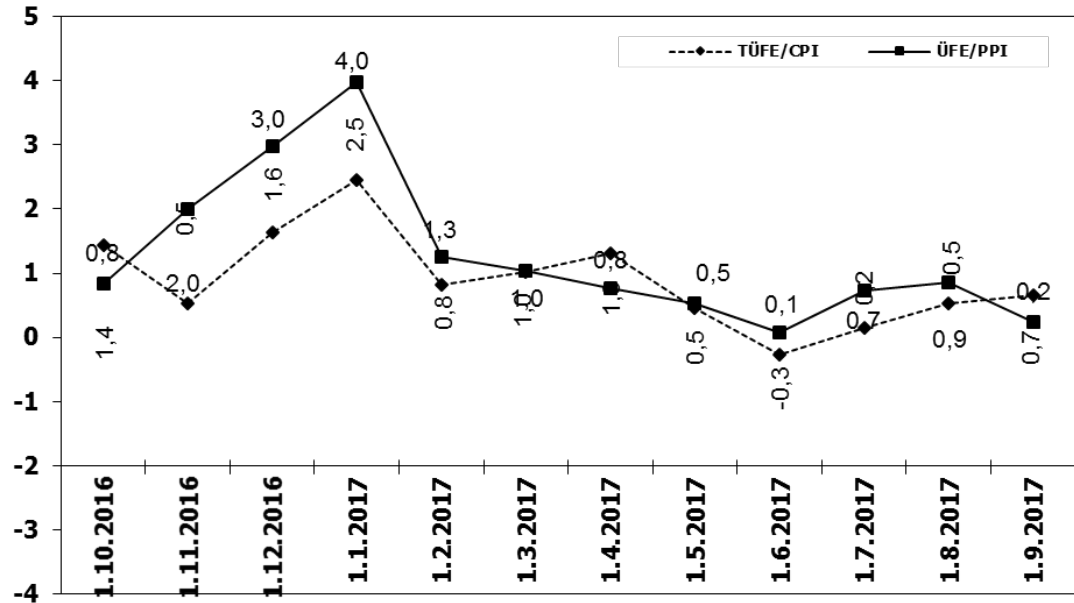


	2007	2008	2009	2010	2011	2012	2013	2014	2015	2016	2017		2007	2008	2009	2010	2011	2012	2013	2014	2015	2016	2017
Yerli/Local	2.634	3.643	1.533	1.527	2.298	2.228	2.455	2.199	2.339	1.314	1.316	Yerli/Local	16.515	14.754	7.947	11.072	19.706	16.662	15.285	16.570	17.218	8.701	8.233
İthal/Imports	0	11	0	0	0	0	0	0	0	0	0	İthal/Imports	7.082	6.370	3.106	5.406	9.417	7.453	6.476	7.003	9.325	5.331	5.172
Toplam/Total	2.634	3.654	1.533	1.527	2.298	2.228	2.455	2.199	2.339	1.314	1.316	Toplam/Total	23.597	21.124	11.053	16.478	29.123	24.115	21.761	23.573	26.543	14.032	13.405
İthalat/Imports (%)	0	0	0	0	0	0	0	0	0	0	0	İthalat/Imports (%)	30	30	28	33	32	31	30	30	35	38	39

## TÜFE ve ÜFE'nin 12 Aylık Ort. Değişimi (%) CPI and PPI 12 Months Avr. Changes (%)



## TÜFE ve ÜFE'nin Aylık Değişimi (%) CPI and PPI Monthly Changes (%)



TİPLER-Types	Ocak January	Őubat February	Mart March	Nisan April	Mayıs May	Haziran June	Temmuz July	Ađustos August	Eylöl September	Ekim October	Kasım November	Aralık December	TOPLAM Total
<b>Otomobil</b>	<b>76.493</b>	<b>81.990</b>	<b>96.313</b>	<b>82.590</b>	<b>87.536</b>	<b>79.544</b>	<b>75.618</b>	<b>44.926</b>	<b>64.166</b>	<b>0</b>	<b>0</b>	<b>0</b>	<b>689.176</b>
OTOMOBİL-Pass. Car	76.493	81.990	96.313	82.590	87.536	79.544	75.618	44.926	64.166	0	0	0	689.176
<b>TİCARİ ARAÇ</b>	<b>26.878</b>	<b>34.073</b>	<b>39.652</b>	<b>34.641</b>	<b>38.152</b>	<b>36.425</b>	<b>38.452</b>	<b>16.373</b>	<b>30.582</b>	<b>0</b>	<b>0</b>	<b>0</b>	<b>295.228</b>
* KAMYONET-Pick Up	23.417	29.632	33.496	29.383	32.321	30.570	32.295	13.307	25.985	0	0	0	250.406
* KAMYON-Truck	25	538	885	664	813	814	785	372	634	0	0	0	5.530
* MIDİBÜS-Midibus	18	59	46	33	52	99	30	59	51	0	0	0	447
* MINİBÜS-Minibus	3.045	3.220	4.570	3.933	4.294	4.358	4.712	2.102	3.348	0	0	0	33.582
* OTOBÜS-Bus	373	624	655	628	672	584	630	533	564	0	0	0	5.263
<b>Traktör</b>	<b>989</b>	<b>885</b>	<b>1.409</b>	<b>1.111</b>	<b>1.056</b>	<b>1.174</b>	<b>1.198</b>	<b>1.268</b>	<b>1.076</b>	<b>0</b>	<b>0</b>	<b>0</b>	<b>10.166</b>
TRAKTÖR-F.Tractor	989	885	1.409	1.111	1.056	1.174	1.198	1.268	1.076	0	0	0	10.166
<b>TOPLAM-Total</b>	<b>104.360</b>	<b>116.948</b>	<b>137.374</b>	<b>118.342</b>	<b>126.744</b>	<b>117.143</b>	<b>115.268</b>	<b>62.567</b>	<b>95.824</b>	<b>0</b>	<b>0</b>	<b>0</b>	<b>994.570</b>

**Otomobil**

FİRMALAR-Companies	Ocak January	Őubat February	Mart March	Nisan April	Mayıs May	Haziran June	Temmuz July	Ađustos August	Eylöl September	Ekim October	Kasım November	Aralık December	TOPLAM Total
FORD OTOSAN	1.855	1.431	1.849	1.329	1.513	1.925	1.287	2	2.002	0	0	0	13.193
HONDA TÜRKİYE	490	196	1.074	795	1.101	950	654	772	764	0	0	0	6.796
HYUNDAİ ASSAN	15.119	17.105	19.168	18.719	19.640	17.231	13.500	15.200	16.600	0	0	0	152.282
OYAK RENAULT	22.534	25.360	31.383	27.062	26.589	24.673	25.234	12.721	17.631	0	0	0	213.187
TOFAŐ	14.373	18.619	18.692	14.241	15.375	12.766	13.319	4.085	10.353	0	0	0	121.823
TOYOTA	22.122	19.279	24.147	20.444	23.318	21.999	21.624	12.146	16.816	0	0	0	181.895
<b>TOPLAM-Total</b>	<b>76.493</b>	<b>81.990</b>	<b>96.313</b>	<b>82.590</b>	<b>87.536</b>	<b>79.544</b>	<b>75.618</b>	<b>44.926</b>	<b>64.166</b>	<b>0</b>	<b>0</b>	<b>0</b>	<b>689.176</b>

**Kamyonet**

FİRMALAR-Companies	Ocak January	Őubat February	Mart March	Nisan April	Mayıs May	Haziran June	Temmuz July	Ađustos August	Eylöl September	Ekim October	Kasım November	Aralık December	TOPLAM Total
FORD OTOSAN	18.002	18.340	23.102	19.638	20.299	18.945	21.006	8.116	16.383	0	0	0	163.831
KARSAN	0	117	91	232	331	254	181	196	259	0	0	0	1.661
OTOKAR	0	0	46	0	6	30	0	0	16	0	0	0	98
TOFAŐ	5.415	11.175	10.257	9.513	11.685	11.341	11.108	4.995	9.327	0	0	0	84.816
<b>TOPLAM-Total</b>	<b>23.417</b>	<b>29.632</b>	<b>33.496</b>	<b>29.383</b>	<b>32.321</b>	<b>30.570</b>	<b>32.295</b>	<b>13.307</b>	<b>25.985</b>	<b>0</b>	<b>0</b>	<b>0</b>	<b>250.406</b>

**Minibüs**

FİRMALAR-Companies	Ocak January	Őubat February	Mart March	Nisan April	Mayıs May	Haziran June	Temmuz July	Ađustos August	Eylöl September	Ekim October	Kasım November	Aralık December	TOPLAM Total
FORD OTOSAN	3.044	3.220	4.547	3.929	4.292	4.345	4.708	2.098	3.335	0	0	0	33.518
KARSAN	1	0	23	4	2	13	4	4	13	0	0	0	64
<b>TOPLAM-Total</b>	<b>3.045</b>	<b>3.220</b>	<b>4.570</b>	<b>3.933</b>	<b>4.294</b>	<b>4.358</b>	<b>4.712</b>	<b>2.102</b>	<b>3.348</b>	<b>0</b>	<b>0</b>	<b>0</b>	<b>33.582</b>

**Kamyon**

FİRMALAR-Companies	Ocak January	Őubat February	Mart March	Nisan April	Mayıs May	Haziran June	Temmuz July	Ađustos August	Eylöl September	Ekim October	Kasım November	Aralık December	TOPLAM Total
A.I.O.S.	0	6	0	0	0	0	0	0	0	0	0	0	6
FORD OTOSAN	25	65	71	87	74	63	94	90	78	0	0	0	647
M. BENZ TÜRK	0	467	814	577	739	751	691	282	556	0	0	0	4.877
<b>TOPLAM-Total</b>	<b>25</b>	<b>538</b>	<b>885</b>	<b>664</b>	<b>813</b>	<b>814</b>	<b>785</b>	<b>372</b>	<b>634</b>	<b>0</b>	<b>0</b>	<b>0</b>	<b>5.530</b>

**Midibüs**

FİRMALAR-Companies	Ocak January	Őubat February	Mart March	Nisan April	Mayıs May	Haziran June	Temmuz July	Ađustos August	Eylöl September	Ekim October	Kasım November	Aralık December	TOPLAM Total
A.I.O.S.	4	39	19	9	44	43	3	22	13	0	0	0	196
KARSAN	1	0	0	0	0	8	10	11	10	0	0	0	40
OTOKAR	13	18	16	16	4	17	13	23	20	0	0	0	140
TEMSA GLOBAL	0	2	11	8	4	31	4	3	8	0	0	0	71
<b>TOPLAM-Total</b>	<b>18</b>	<b>59</b>	<b>46</b>	<b>33</b>	<b>52</b>	<b>99</b>	<b>30</b>	<b>59</b>	<b>51</b>	<b>0</b>	<b>0</b>	<b>0</b>	<b>447</b>

**Otobüs**

FİRMALAR-Companies	Ocak January	Őubat February	Mart March	Nisan April	Mayıs May	Haziran June	Temmuz July	Ađustos August	Eylöl September	Ekim October	Kasım November	Aralık December	TOPLAM Total
A.I.O.S.	0	13	46	8	7	8	14	26	64	0	0	0	186
KARSAN	0	0	1	0	0	20	0	25	52	0	0	0	98
M. BENZ TÜRK	191	382	359	318	373	312	331	215	139	0	0	0	2.620
MAN TÜRKİYE	129	199	191	229	176	147	149	105	165	0	0	0	1.490
OTOKAR	41	10	7	15	23	36	60	47	21	0	0	0	260
TEMSA GLOBAL	12	20	51	58	93	61	76	115	123	0	0	0	609
<b>TOPLAM-Total</b>	<b>373</b>	<b>624</b>	<b>655</b>	<b>628</b>	<b>672</b>	<b>584</b>	<b>630</b>	<b>533</b>	<b>564</b>	<b>0</b>	<b>0</b>	<b>0</b>	<b>5.263</b>

**Traktör**

FİRMALAR-Companies	Ocak January	Őubat February	Mart March	Nisan April	Mayıs May	Haziran June	Temmuz July	Ađustos August	Eylöl September	Ekim October	Kasım November	Aralık December	TOPLAM Total
HATTAT TARIM	84	15	173	98	128	77	92	161	170	0	0	0	898
TÜRK TRAKTÖR	905	870	1.236	1.013	928	1.097	1.106	1.107	1.006	0	0	0	9.268
<b>TOPLAM-Total</b>	<b>989</b>	<b>885</b>	<b>1.409</b>	<b>1.111</b>	<b>1.056</b>	<b>1.174</b>	<b>1.198</b>	<b>1.268</b>	<b>1.076</b>	<b>0</b>	<b>0</b>	<b>0</b>	<b>10.166</b>

**2017 YILI İTHAL OTOMOBİL SATIŞLARI / P.Cars Import 2017**

	2016 TOPLAMI 2016 Total	1	2	3	4	5	6	7	8	9	10	11	12	2017 TOPLAMI 2017 Total
VOLKSWAGEN	101.761	3.059	4.903	6.729	6.672	8.131	7.213	7.006	6.957	7.831				58.501
OPEL	55.471	1.577	1.652	4.014	3.838	3.654	4.055	4.365	3.564	2.966				29.685
DACIA	42.109	1.471	2.303	3.534	3.557	3.356	2.933	3.467	3.467	2.916				27.470
RENAULT	42.422	844	1.462	3.148	2.879	3.630	3.230	3.673	3.714	2.775				25.355
FORD	33.453	1.175	1.199	2.760	2.902	3.992	3.425	3.067	2.826	2.017				23.363
PEUGEOT	25.440	637	1.884	2.139	2.604	2.651	2.799	2.030	2.412	1.969				19.125
NISSAN	30.513	1.154	1.519	2.083	2.254	2.835	2.385	2.460	2.429	1.603				18.722
HYUNDAI	26.463	1.413	1.393	2.563	2.003	1.904	2.179	1.871	2.299	2.232				17.857
MERCEDES-BENZ	32.666	499	1.078	2.308	2.106	2.213	2.313	2.300	2.324	2.312				17.453
SKODA	28.876	925	1.225	1.335	2.144	1.655	1.931	2.133	1.937	2.344				15.629
AUDI	22.005	625	702	1.287	1.673	2.109	2.177	1.370	1.055	1.352				12.350
CITROEN	17.041	515	761	1.765	1.654	1.504	1.473	1.339	1.321	1.433				11.765
BMW	27.166	570	900	1.346	877	1.814	1.409	1.904	1.285	1.487				11.592
SEAT	20.637	536	623	1.103	1.583	1.651	2.436	1.789	1.030	763				11.514
KIA	14.398	426	481	630	1.097	1.110	1.003	1.065	920	831				7.563
HONDA	8.714	206	255	642	618	660	666	583	510	616				4.756
TOYOTA	11.513	439	413	439	427	484	707	852	501	481				4.743
VOLVO	4.100	155	213	232	340	400	374	275	340	352				2.681
SUZUKI	3.931	79	143	260	206	324	296	446	458	431				2.643
JEEP	2.192	111	104	162	184	179	188	198	174	238				1.538
FIAT	3.103	106	187	229	185	178	145	117	184	111				1.442
LAND ROVER	2.108	34	72	104	175	211	176	126	170	186				1.254
SUBARU	1.584	67	40	195	129	30	216	103	131	118				1.029
MAZDA	1.427	54	76	109	100	139	161	117	120	91				967
MINI	1.688	55	81	82	80	96	130	93	133	137				887
PORSCHE	827	66	61	61	35	31	62	82	37	47				482
SSANGYONG	507	10	20	32	27	32	66	32	24	28				271
MITSUBISHI	709	28	43	50	45	24	16	19	25	15				265
JAGUAR	481	6	10	23	36	49	23	39	34	34				254
ALFA ROMEO	634	17	43	59	27	24	24	18	19	15				246
SMART	192	2	7	20	19	28	8	10	6	2				102
DS	400	9	0	1	13	5	1	38	1	21				89
INFINITI	120	6	12	8	2	16	10	5	13	6				78
LEXUS	64	16	3	6	11	9	2	3	2	21				73
MASERATI	72	2	7	3	5	2	4	9	6	6				44
ASTON MARTIN	29	1	2	3	2	2	2	2	1	0				15
BENTLEY	9	1	2	0	1	1	1	0	2	3				11
FERRARI	18	0	1	3	1	0	1	0	3	0				9
LAMBORGHINI	7	0	0	0	1	1	1	1	0	0				4
CHERY	144	0	0	0	0	0	0	0	0	0				0
PROTON	51	0	0	0	0	0	0	0	0	0				0
<b>TOPLAM</b>	<b>565.045</b>	<b>16.896</b>	<b>23.880</b>	<b>39.467</b>	<b>40.512</b>	<b>45.134</b>	<b>44.241</b>	<b>43.473</b>	<b>40.434</b>	<b>37.790</b>	<b>0</b>	<b>0</b>	<b>0</b>	<b>331.827</b>

**2017 YILI İTHAL HAFİF TİCARİ ARAÇ SATIŞLARI / Light Commercial Vehicles Import 2017**

	2016 TOPLAMI 2016 Total	1	2	3	4	5	6	7	8	9	10	11	12	2017 TOPLAMI 2017 Total
VOLKSWAGEN	32.772	1.255	1.599	2.121	2.362	2.524	2.218	2.376	2.405	2.396				19.256
RENAULT	15.091	519	718	1.327	1.238	1.268	1.098	1.499	1.375	1.260				10.302
CITROEN	6.884	438	669	424	807	1.147	1.176	479	682	480				6.302
PEUGEOT	8.402	157	351	990	739	965	726	885	805	652				6.270
MERCEDES-BENZ	8.070	343	496	687	742	781	767	814	845	741				6.216
DACIA	5.422	235	348	523	615	658	650	642	538	455				4.664
FIAT	5.885	257	448	490	602	405	380	526	677	616				4.401
TOYOTA	5.645	356	451	489	304	243	211	375	328	352				3.109
FORD	4.878	250	270	371	212	270	220	228	423	401				2.645
KIA	3.952	193	240	384	306	386	150	358	209	262				2.488
HYUNDAI	2.244	134	174	242	308	357	243	224	248	283				2.213
MITSUBISHI	3.533	173	213	127	209	438	169	281	228	257				2.095
NISSAN	1.540	167	266	337	258	170	196	195	233	151				1.973
IVECO	2.175	146	133	250	205	210	152	171	221	229				1.717
SSANGYONG	254	9	4	21	12	15	51	56	49	18				235
ISUZU	1.055	12	12	9	11	11	8	17	16	7				103
TATA	9	0	0	0	0	0	0	0	0	0				0
<b>TOPLAM</b>	<b>107.811</b>	<b>4.644</b>	<b>6.392</b>	<b>8.792</b>	<b>8.930</b>	<b>9.848</b>	<b>8.415</b>	<b>9.126</b>	<b>9.282</b>	<b>8.560</b>	<b>0</b>	<b>0</b>	<b>0</b>	<b>73.989</b>