



OTOMOTİV SANAYİ DERNEĞİ
AUTOMOTIVE MANUFACTURERS ASSOCIATION

AYLIK RAPOR

Automotive Industry Monthly Report

Ekim / October 2016

- **Üretim/Production**
- **Satış/Sales**
- **İthalat/Imports**
- **İhracat/Exports**

OSD "OICA" Üyesidir



OSD is a Member of "OICA"

2016 Ekim Ayı Özeti / 2016 October Summary

KONULAR/MATTERS		EKİM / OCTOBER			10 AY/ 10 MONTHS			SON 12 AYLIK / YoY		
		2015	2016	2016/2015 (%)	2015	2016	2016/2015 (%)	2015	2016	2016/2015 (%)
Üretim/Production	Toplam/Total	132.977	145.866	10	1.106.808	1.179.141	7	1.340.494	1.431.109	7
	Otomobil/P.Cars	77.243	98.008	27	643.467	739.189	15	783.413	886.699	13
Pazar/Market	Toplam/Total	66.520	85.251	28	759.719	738.093	-3	997.597	989.568	-1
	Otomobil/P.Cars	47.954	63.746	33	548.859	553.111	1	718.608	729.848	2
İthalat/Import	Toplam/Total	44.808	58.974	32	501.298	505.037	1	648.111	662.429	2
	Otomobil/P.Cars	36.108	48.571	35	409.631	419.242	2	530.752	547.326	3
İhracat/Export	Toplam/Total	99.849	109.539	10	806.865	905.438	12	969.737	1.090.908	12
	Otomobil/P.Cars	58.704	74.244	26	487.378	574.967	18	591.266	692.372	17
İhracat / Export (\$)	Toplam/Total **	2.060.016.079	2.251.063.547	9	17.771.436.108	19.605.924.673	10	20.683.128.611	22.734.484.879	10
	Otomobil/P.Cars	591.333.688	826.589.534	40	5.632.220.416	6.299.531.764	12	6.392.813.239	7.265.457.155	14

PARAMETRELER / PARAMETERS		EKİM / OCTOBER			10 AY/ 10 MONTHS			SON 12 AYLIK / YoY		
		2015	2016	2016/2015 (%)	2015	2016	2016/2015 (%)	2015	2016	2016/2015 (%)
ÜFE/PPI		-0,20	0,84	**	7,59	4,66	**	5,58	3,83	**
TÜFE/CPI		1,55	1,44	**	7,86	6,23	**	7,69	7,89	**
Sanayi Endeksi/Industry Index		-0,37	0,93	**	8,03	5,98	**	6,29	4,90	**
\$ (*)		2,9641	3,0509	3	2,7016	2,9326	9	2,6292	2,9237	11
EURO (*)		3,2831	3,3845	3	3,0011	3,2622	9	2,9657	3,2356	9
Japon Yeni (*)		2,4504	2,9413	20	2,2220	2,6959	21	2,1678	2,6386	22

(*) Ortalama Değerler / Average Values

(**) Toplam Sanayi / Total Industry Including Components

*Raporda yer alan üretim adetleri yalnızca OSD üyelerinin verilerini göstermektedir.
Production units in this report only show the data of OSD members.*

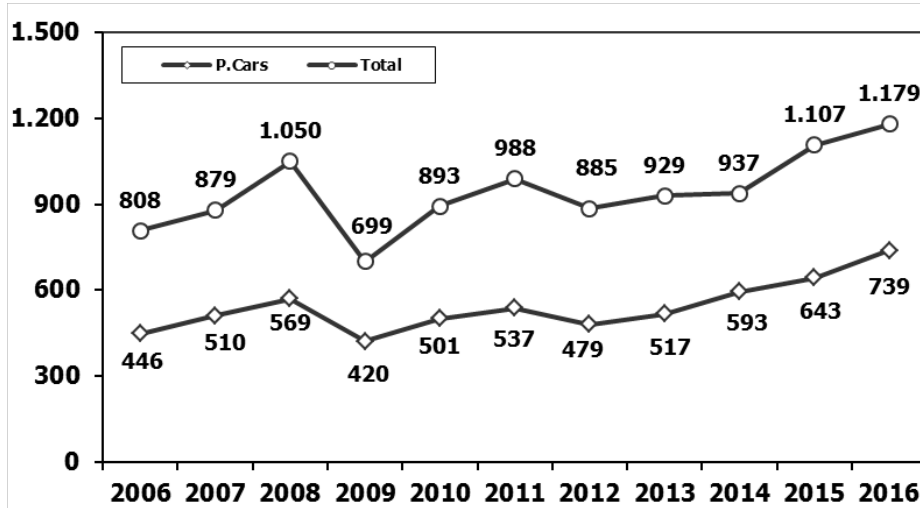
2015/2016 Yılları Üretim 2015/2016 Production

K.KAMYON : AYA 3.5-12 Ton (L.Truck:GVW 3.5-12 Ton)

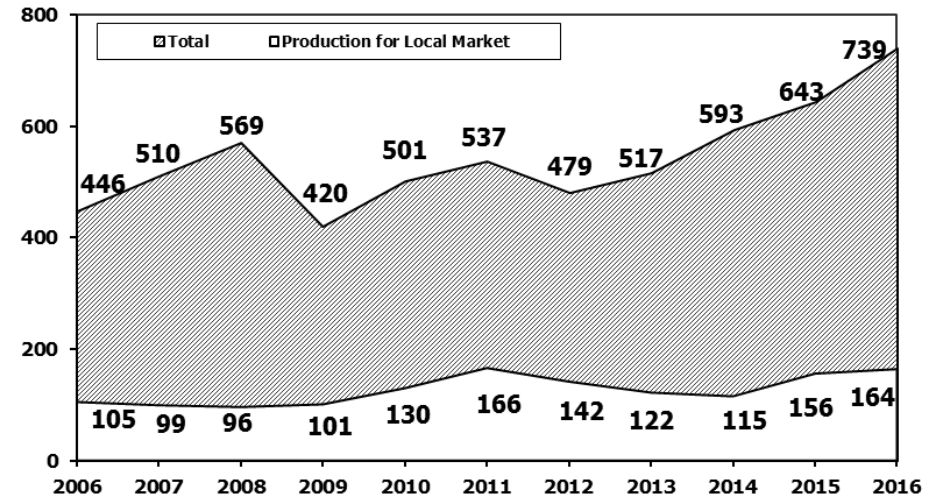
B.KAMYON : AYA 12 Ton'dan Büyük (M.Truck:GVW 12 Ton And Up)

TİPLER	EKİM AYI ÜRETİMİ October Production		10 AYLIK ÜRETİM 10 Months Production		DEĞİŞİM % Percent Change %	
	2015	2016	2015	2016	EKİM October	10 AY 10 Months
OTOMOBİL - Pass.Car	77.243	98.008	643.467	739.189	27	15
TİCARİ ARAÇLAR - Commercial Vehicles	55.734	47.858	463.341	439.952	-14	-5
* B. KAMYON - M. Truck	2.371	1.040	25.701	12.677	-56	-51
* K. KAMYON - L. Truck	524	310	3.417	1.994	-41	-42
* KAMYONET - Pick Up	49.317	40.466	378.314	380.103	-18	0
* OTOBÜS - Bus	894	698	7.014	6.910	-22	-1
* MİNİBÜS - Minibus	1.980	5.050	43.376	35.410	155	-18
* MİDİBÜS - Midibus	648	294	5.519	2.858	-55	-48
TAŞIT ARAÇLARI TOPLAM - MV Total	132.977	145.866	1.106.808	1.179.141	10	7
TRAKTÖR - F.Tractor	4.711	3.803	43.551	42.947	-19	-1
GENEL TOPLAM - Grand Total	137.688	149.669	1.150.359	1.222.088	9	6

Toplam Üretim ve Otomobil Üretimi (x1000) (Ocak-Ekim)
Total & P.Cars Production (x1000) (January-October)

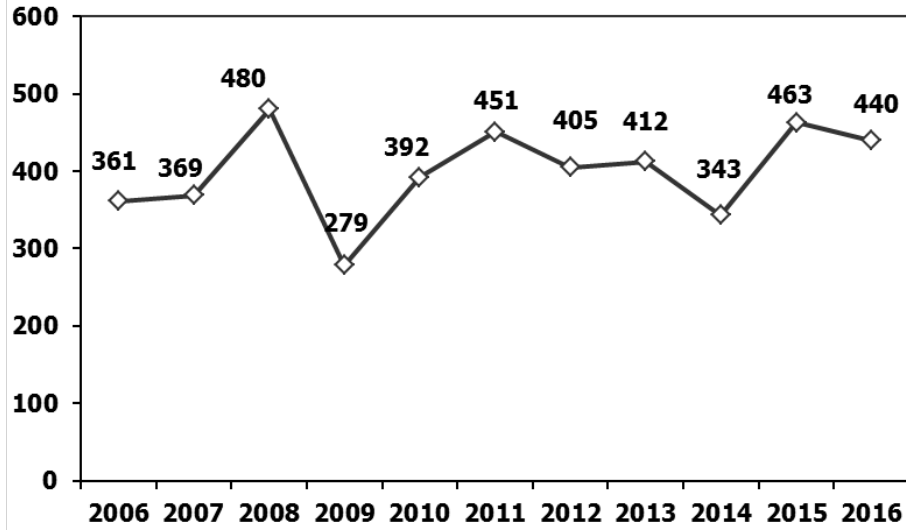


Otomobil Üretimi ve İhracat (x1000) (Ocak-Ekim)
P.Cars Production & Exports (x1000) (January-October)



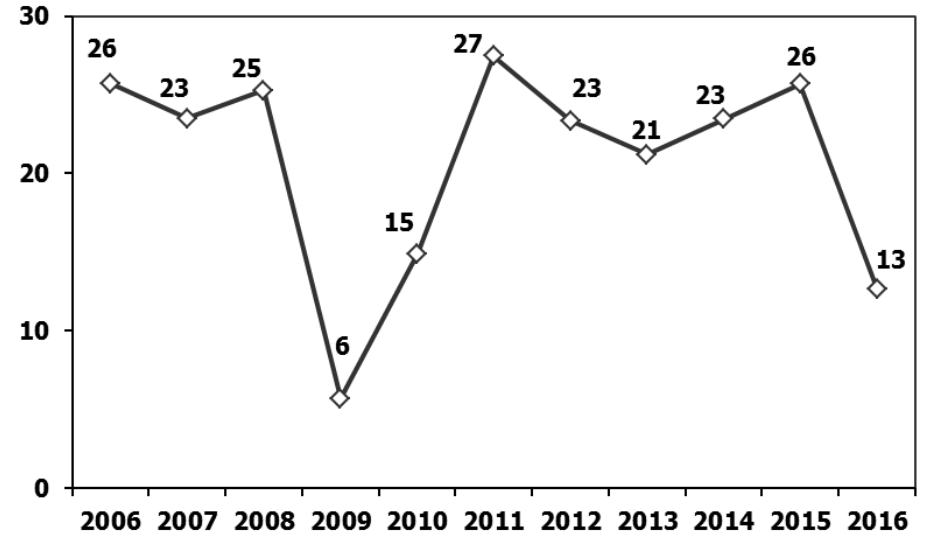
Ticari Araç Üretimi (x1000) (Ocak-Ekim)

Commercial Vehicle Production (x1000) (January-October)



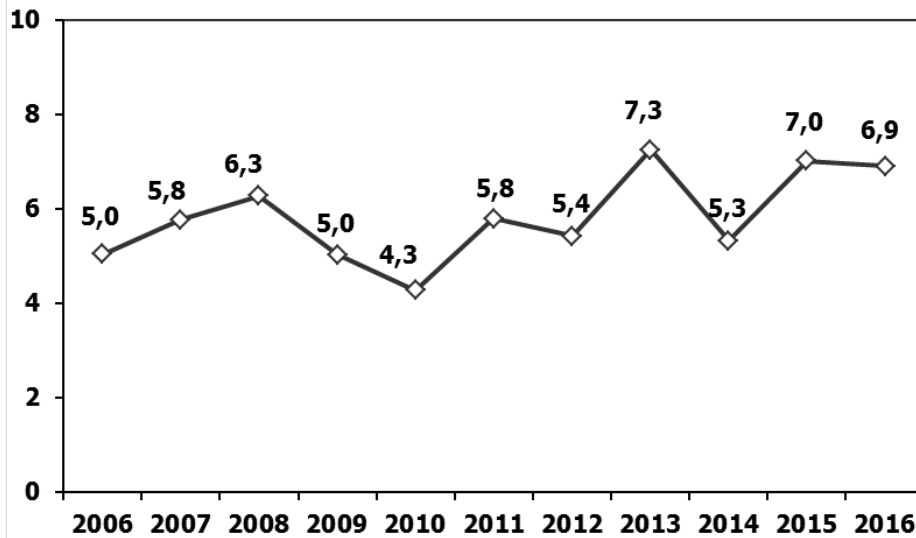
(AYA >12 Ton) Büyük Kamyon Üretimi (x1000) (Ocak-Ekim)

(GVW >12 Ton) Heavy Truck Production (x1000) (January-October)



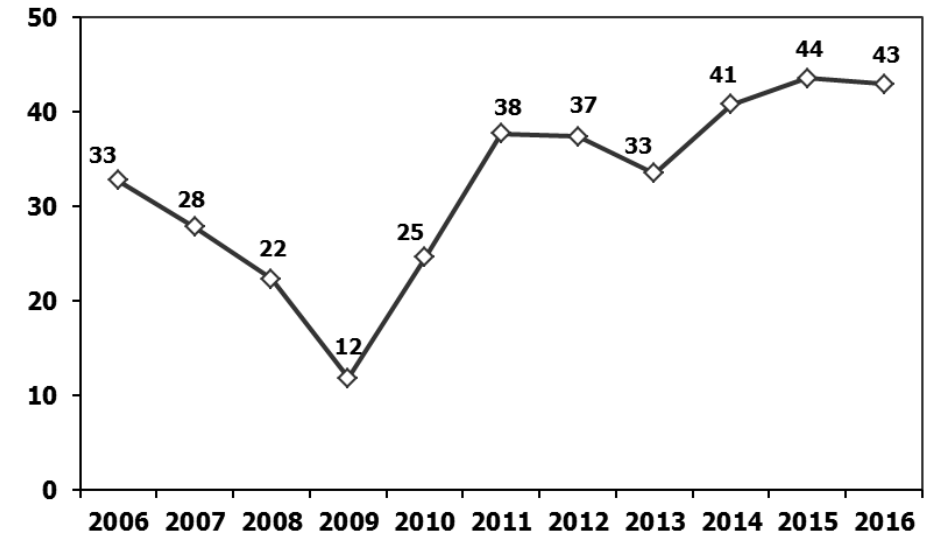
Otobüs Üretimi (x1000) (Ocak-Ekim)

Bus Production (x1000) (January-October)



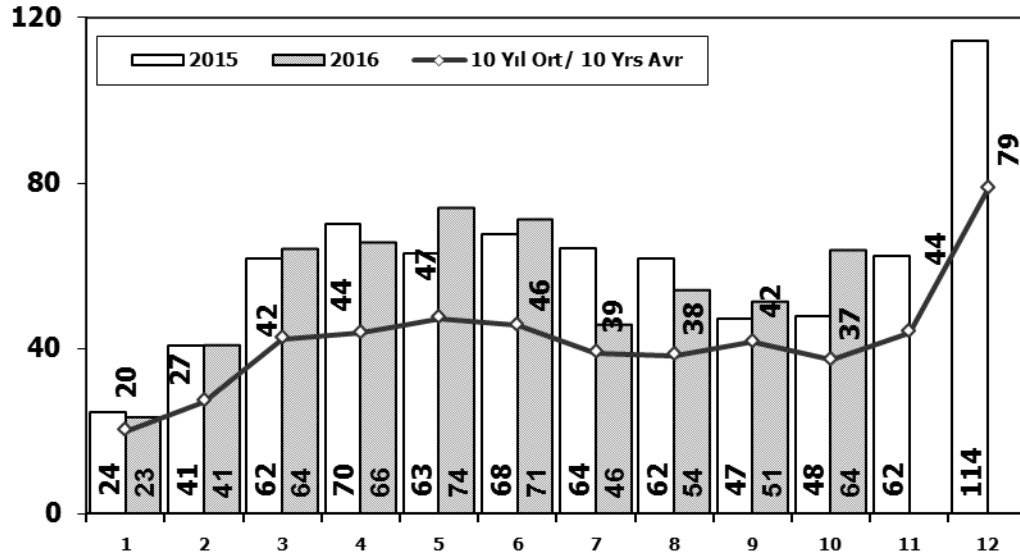
Traktör Üretimi (x1000) (Ocak-Ekim)

F. Tractor Production (x1000) (January-October)



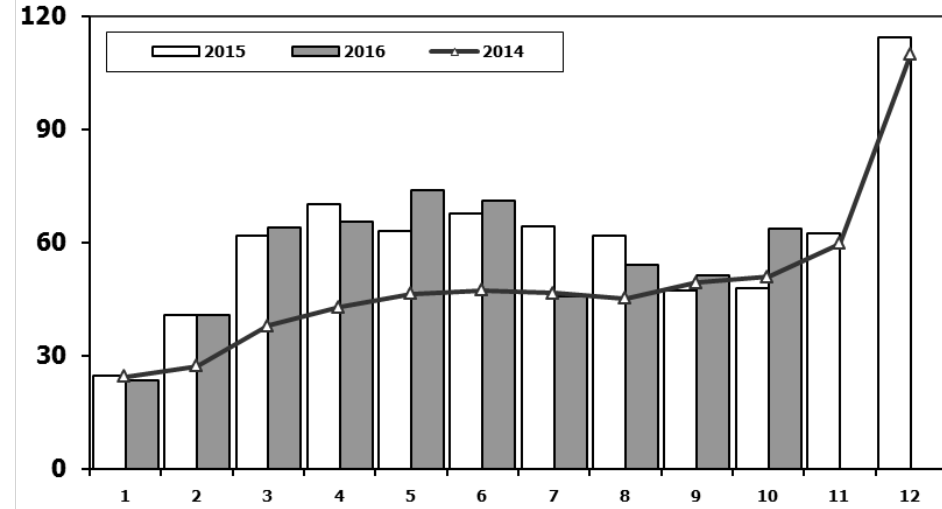
Otomobil Pazarının Analizi (x1000)

P.Cars Market Analysis (x1000)



Otomobil Pazarı (x1000)

P.Cars Market (x1000)

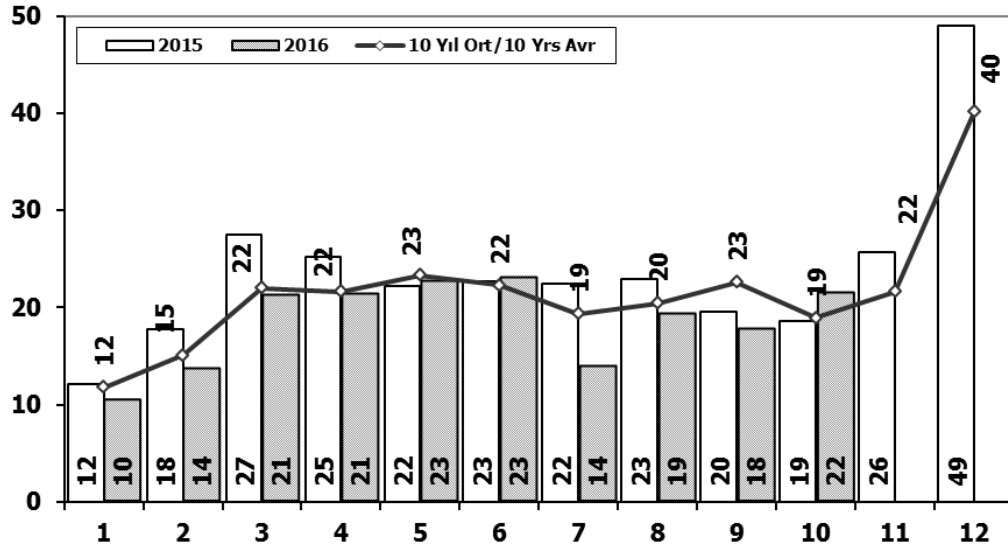


Aylar / Months	10 Yil Ort. 10 Yrs Avr. (x1000)	2016 (x1000)	%
1	20,0	23,4	17,0
2	27,1	40,6	49,5
3	42,3	64,0	51,4
4	43,8	65,6	49,8
5	47,2	73,8	56,4
6	45,6	71,1	56,0
7	38,9	45,6	17,1
8	38,3	54,0	41,0
9	41,5	51,3	23,6
10	37,2	63,7	71,4
Total	381,9	553,1	44,8

	1	2	3	4	5	6	7	8	9	10	11	12	10 Ay/Mo	Total
2006	16.506	24.929	36.996	40.177	48.521	32.982	22.653	24.873	27.517	21.237	30.477	46.351	296.391	373.219
2007	13.186	17.212	24.336	25.204	29.067	30.126	28.246	28.469	27.662	32.569	39.643	61.745	256.077	357.465
2008	18.588	21.196	34.147	30.313	31.477	28.724	25.530	26.102	27.053	19.788	17.201	25.879	262.918	305.998
2009	13.173	14.492	40.622	36.202	44.188	41.019	16.637	22.537	52.162	13.828	17.781	57.178	294.860	369.819
2010	12.594	20.651	33.958	36.549	40.467	42.086	41.399	42.222	42.477	47.859	50.061	99.461	360.262	509.784
2011	29.868	39.004	54.023	53.835	56.302	56.714	43.518	38.875	39.964	47.508	44.951	88.957	459.611	593.519
2012	21.077	29.189	47.270	45.645	50.460	50.849	44.531	41.236	49.360	43.440	52.297	80.926	423.057	556.280
2013	25.835	36.814	51.785	56.999	62.383	58.290	55.712	51.611	52.925	46.985	64.117	101.199	499.339	664.655
2014	24.368	27.167	37.812	42.769	46.379	47.278	46.602	45.131	49.262	50.814	59.695	110.054	417.582	587.331
2015	24.498	40.817	61.676	70.211	62.878	67.766	64.218	61.753	47.088	47.954	62.397	114.340	548.859	725.596
2016	23.358	40.588	63.975	65.618	73.832	71.111	45.566	53.977	51.340	63.746			553.111	553.111

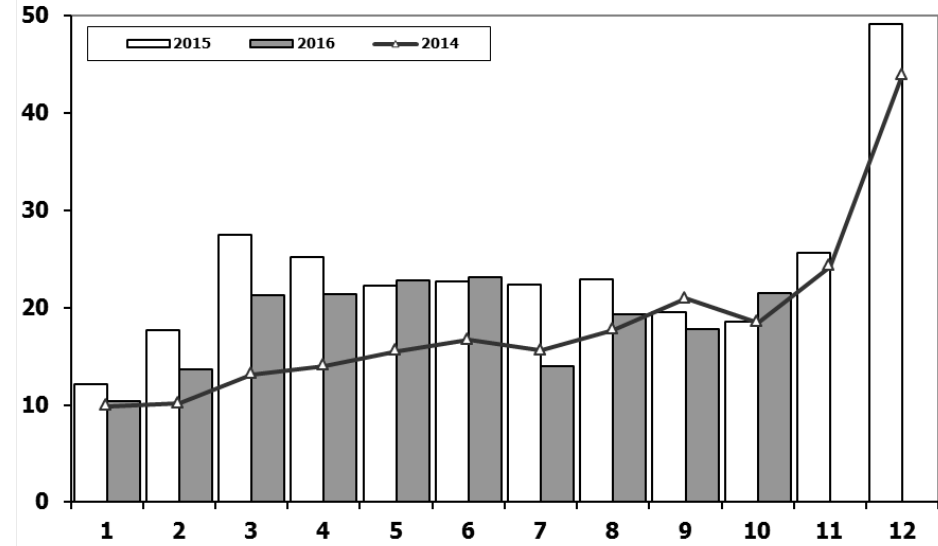
Ticari Araç Pazarının Analizi (x1000)

CV Market Analysis (x1000)



Ticari Araç Pazarı (x1000)

CV Total Market (x1000)

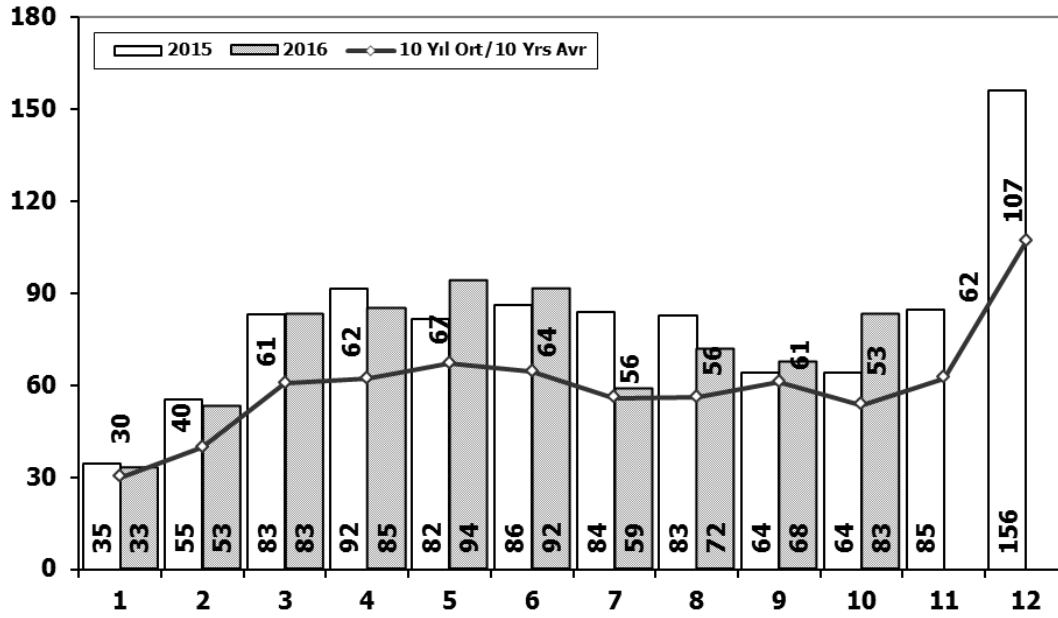


Aylar / Months	10 Yıl Ort. 10 Yrs Avr. (x1000)	2016 (x1000)	%
1	11,8	10,4	-11,7
2	15,1	13,6	-9,8
3	22,0	21,2	-3,5
4	21,6	21,4	-1,0
5	23,3	22,7	-2,4
6	22,3	23,1	3,7
7	19,4	13,9	-28,1
8	20,4	19,3	-5,5
9	22,6	17,7	-21,5
10	18,9	21,5	13,5
Total	197,4	185,0	-6,3

	1	2	3	4	5	6	7	8	9	10	11	12	10 Ay/Mo	Total
2006	13.463	19.717	28.094	28.676	34.768	25.221	17.384	22.501	22.112	18.568	25.421	36.371	230.504	292.296
2007	11.764	14.490	21.152	20.429	22.188	21.535	21.871	25.702	22.416	23.489	27.374	44.331	205.036	276.741
2008	15.204	16.925	22.667	20.654	20.150	20.669	19.162	20.490	19.776	15.359	10.951	18.539	191.056	220.546
2009	7.458	8.354	15.909	18.224	20.699	22.083	13.609	14.555	31.241	8.289	11.421	34.208	160.421	206.050
2010	8.456	11.662	19.870	20.530	21.161	21.304	22.319	22.423	24.124	28.921	27.345	55.273	200.770	283.388
2011	17.790	23.344	29.310	28.236	28.791	29.149	21.846	22.503	23.679	25.132	22.244	45.324	249.780	317.348
2012	10.142	14.638	21.687	20.369	24.360	23.932	20.591	19.612	23.837	19.237	22.748	40.187	198.405	261.340
2013	11.305	14.117	20.903	20.016	23.038	19.481	19.014	15.772	18.112	13.414	18.900	34.397	175.172	228.469
2014	9.857	10.141	13.152	13.997	15.530	16.674	15.604	17.708	20.918	18.445	24.242	43.887	152.026	220.155
2015	12.078	17.716	27.445	25.220	22.267	22.697	22.407	22.930	19.534	18.566	25.646	49.092	210.860	285.598
2016	10.382	13.635	21.239	21.423	22.744	23.092	13.939	19.292	17.731	21.505			184.982	184.982

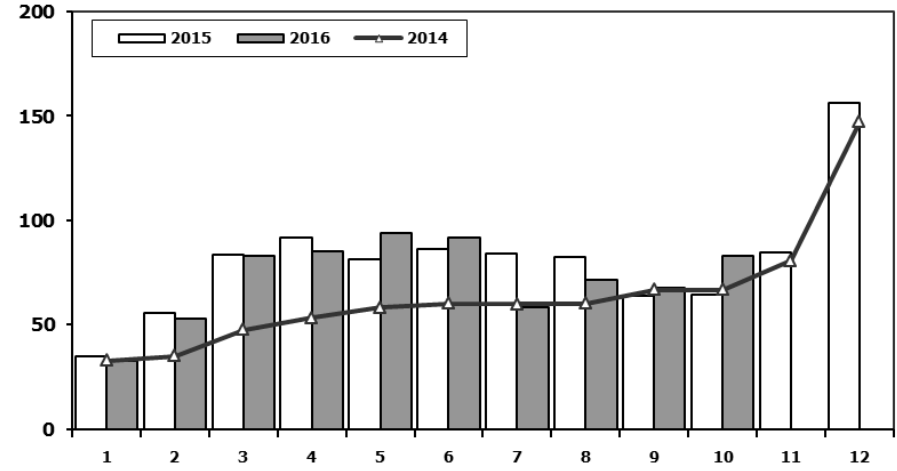
Hafif Araç Pazarının Analizi (x1000)

LV Market Analysis (x1000)



Hafif Araç Pazarı (x1000)

LV Total Market (x1000)

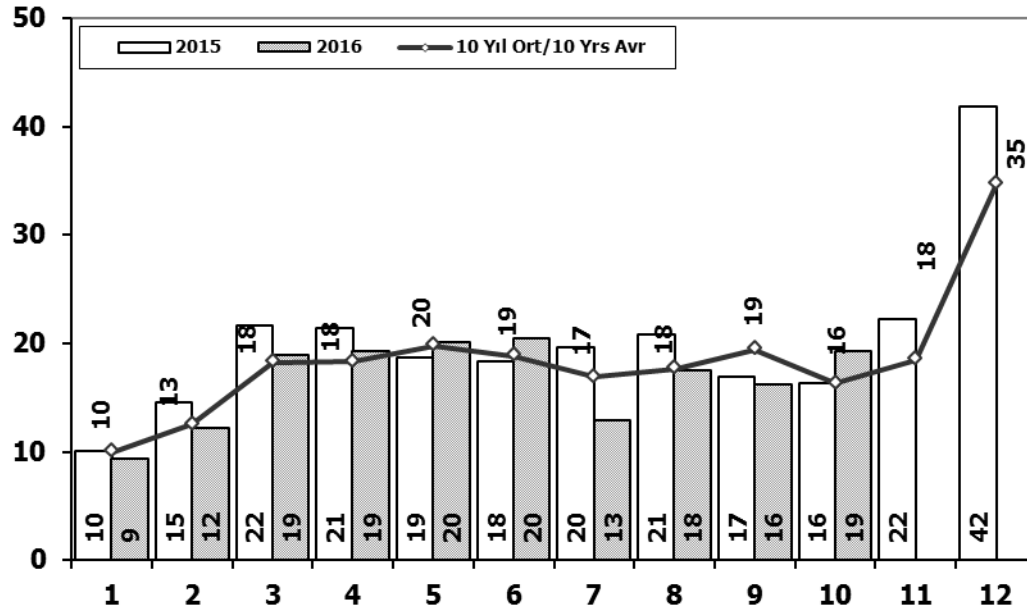


Aylar / Months	10 Yil Ort. 10 Yrs Avr. (x1000)	2016 (x1000)	%
1	30,0	32,7	9,2
2	39,7	52,8	33,1
3	60,5	82,9	37,0
4	62,1	84,9	36,7
5	67,0	93,9	40,2
6	64,4	91,5	42,1
7	55,8	58,5	4,9
8	56,0	71,6	27,8
9	61,0	67,6	10,8
10	53,5	83,0	55,2
Total	549,9	719,5	30,8

	1	2	3	4	5	6	7	8	9	10	11	12	10 Ay/Mo	Total
2006	27.917	40.938	60.052	64.038	78.229	54.355	37.251	43.767	46.109	36.542	51.867	76.787	489.198	617.852
2007	23.117	29.184	41.890	42.366	47.938	48.674	47.490	50.558	46.581	52.725	63.313	100.926	430.523	594.762
2008	31.527	35.251	53.649	47.701	48.598	46.324	42.156	43.670	43.932	32.884	26.253	42.078	425.692	494.023
2009	19.606	21.742	55.111	52.640	63.191	61.067	28.845	35.609	81.397	21.033	27.962	88.923	440.241	557.126
2010	20.095	31.172	51.769	54.946	59.377	60.896	61.345	61.764	63.814	73.404	73.962	148.369	538.582	760.913
2011	44.892	58.663	78.403	77.695	80.646	81.573	63.044	58.406	60.129	69.421	63.657	127.910	672.872	864.439
2012	29.545	41.324	64.884	62.949	70.863	71.067	62.304	58.148	69.629	59.938	71.710	115.400	590.651	777.761
2013	35.523	48.307	68.774	73.575	81.468	74.096	71.596	65.043	67.963	58.014	79.301	129.718	644.359	853.378
2014	32.670	35.021	47.581	53.305	58.121	60.163	59.907	60.199	66.531	66.573	80.621	146.989	540.071	767.681
2015	34.615	55.331	83.302	91.602	81.542	86.158	83.836	82.577	64.025	64.255	84.601	156.173	727.243	968.017
2016	32.713	52.825	82.948	84.887	93.904	91.540	58.533	71.556	67.593	83.000			719.499	719.499

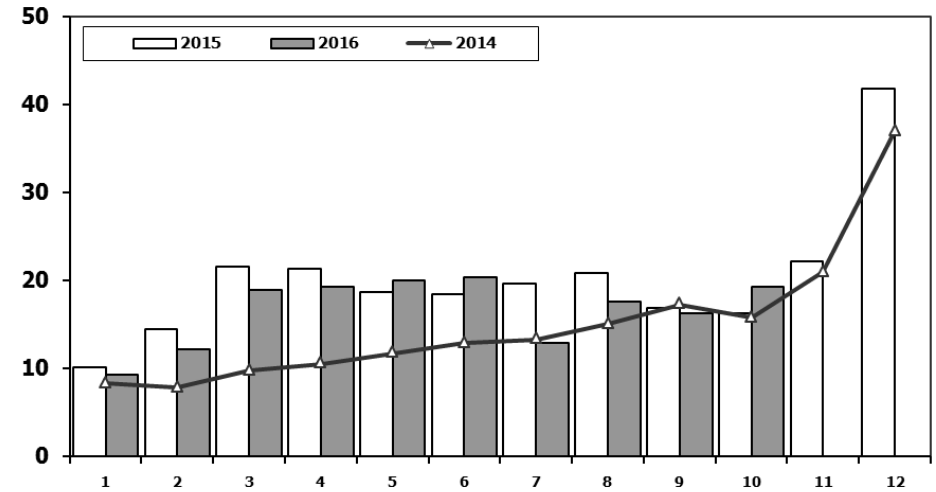
Hafif Ticari Araç Pazarının Analizi (x1000)

LCV Market Analysis (x1000)



Hafif Ticari Araç Pazarı (x1000)

LCV Total Market (x1000)

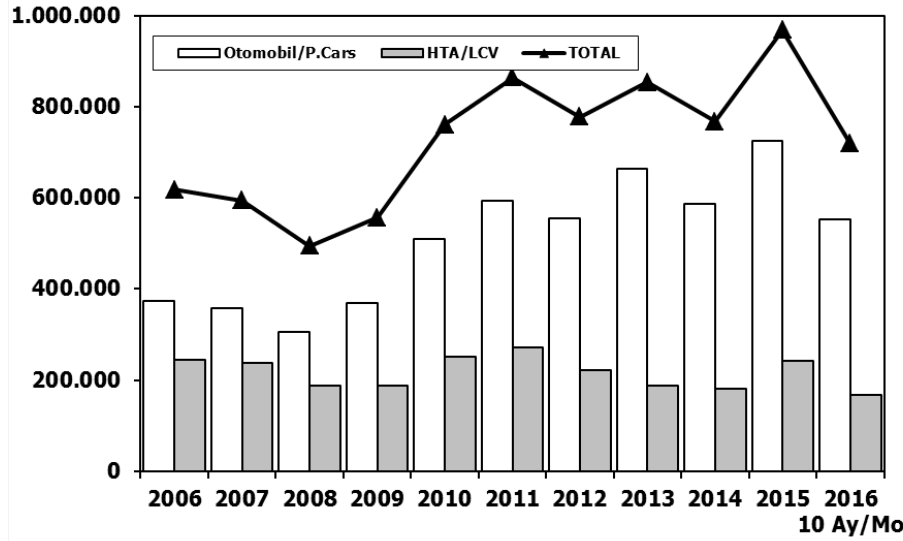


Aylar / Months	10 Yil Ort. 10 Yrs Avr. (x1000)	2016 (x1000)	%
1	10,0	9,4	-6,3
2	12,5	12,2	-2,5
3	18,3	19,0	3,8
4	18,3	19,3	5,3
5	19,8	20,1	1,5
6	18,9	20,4	8,4
7	16,9	13,0	-23,1
8	17,7	17,6	-0,6
9	19,5	16,3	-16,5
10	16,3	19,3	18,3
Total	168,0	166,4	-1,0

	1	2	3	4	5	6	7	8	9	10	11	12	10 Ay/Mo	Total
2006	11.411	16.009	23.056	23.861	29.708	21.373	14.598	18.894	18.592	15.305	21.390	30.436	192.807	244.633
2007	9.931	11.972	17.554	17.162	18.871	18.548	19.244	22.089	18.919	20.156	23.670	39.181	174.446	237.297
2008	12.939	14.055	19.502	17.388	17.121	17.600	16.626	17.568	16.879	13.096	9.052	16.199	162.774	188.025
2009	6.433	7.250	14.489	16.438	19.003	20.048	12.208	13.072	29.235	7.205	10.181	31.745	145.381	187.307
2010	7.501	10.521	17.811	18.397	18.910	18.810	19.946	19.542	21.337	25.545	23.901	48.908	178.320	251.129
2011	15.024	19.659	24.380	23.860	24.344	24.859	19.526	19.531	20.165	21.913	18.706	38.953	213.261	270.920
2012	8.468	12.135	17.614	17.304	20.403	20.218	17.773	16.912	20.269	16.498	19.413	34.474	167.594	221.481
2013	9.688	11.493	16.989	16.576	19.085	15.806	15.884	13.432	15.038	11.029	15.184	28.519	145.020	188.723
2014	8.302	7.854	9.769	10.536	11.742	12.885	13.305	15.068	17.269	15.759	20.926	36.935	122.489	180.350
2015	10.117	14.514	21.626	21.391	18.664	18.392	19.618	20.824	16.937	16.301	22.204	41.833	178.384	242.421
2016	9.355	12.237	18.973	19.269	20.072	20.429	12.967	17.579	16.253	19.254			166.388	166.388

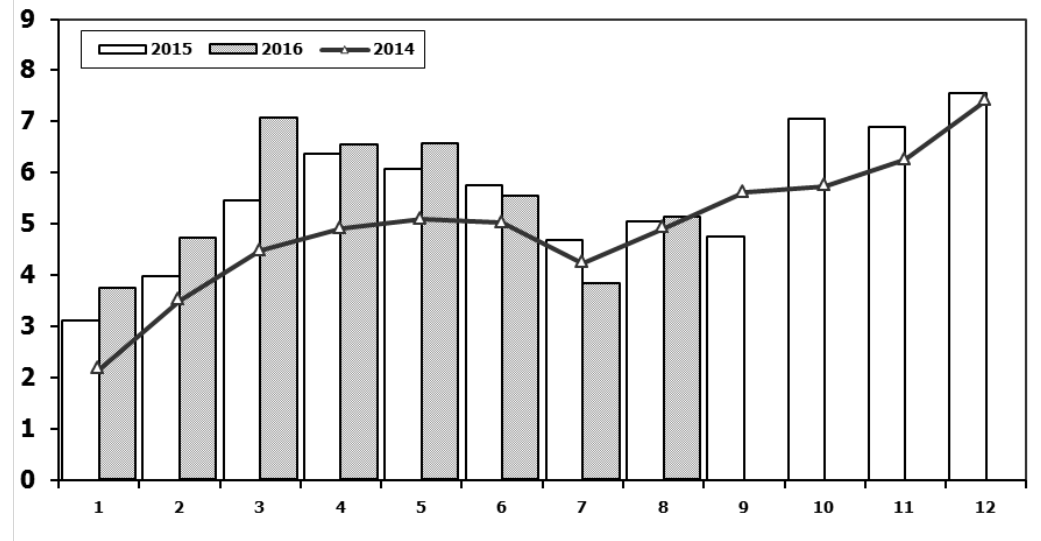
Hafif Araç Pazarı (AYA < 3.5 Ton)

Light Vehicle Market (GVW < 3.5 Ton)



Traktör Pazarı (x1000)

F. Tractor Market (x1000)

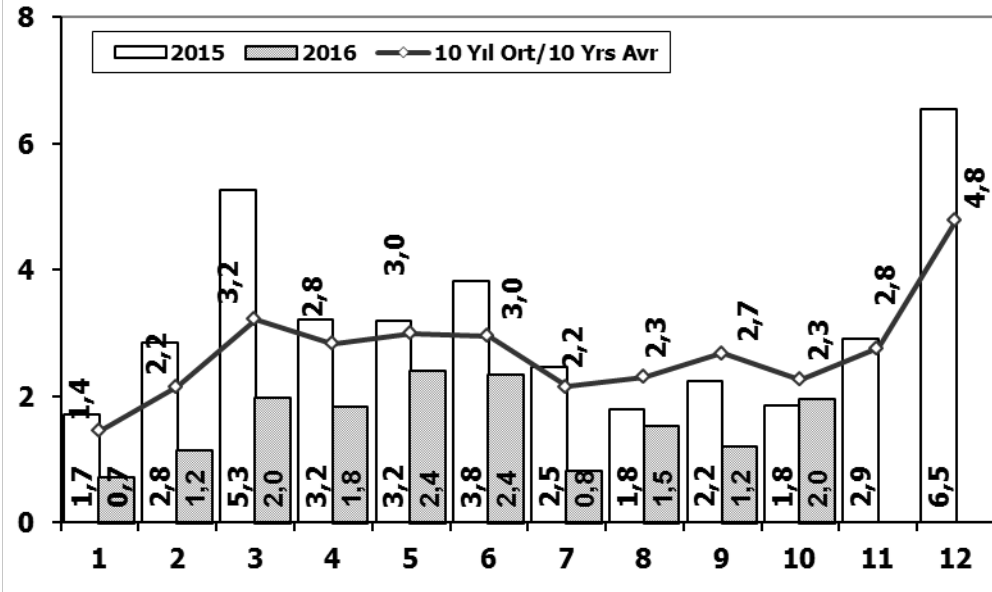


	2006	2007	2008	2009	2010	2011	2012	2013	2014	2015	2016
Otomobil/P.Cars	373.219	357.465	305.998	369.819	509.784	593.519	556.280	664.655	587.331	725.596	553.111
HTA/LCV	244.633	237.297	188.025	187.307	251.129	270.920	221.481	188.723	180.350	242.421	166.388
TOTAL	617.852	594.762	494.023	557.126	760.913	864.439	777.761	853.378	767.681	968.017	719.499
HTA/LCV (%)	40	40	38	34	33	31	28	22	23	25	23

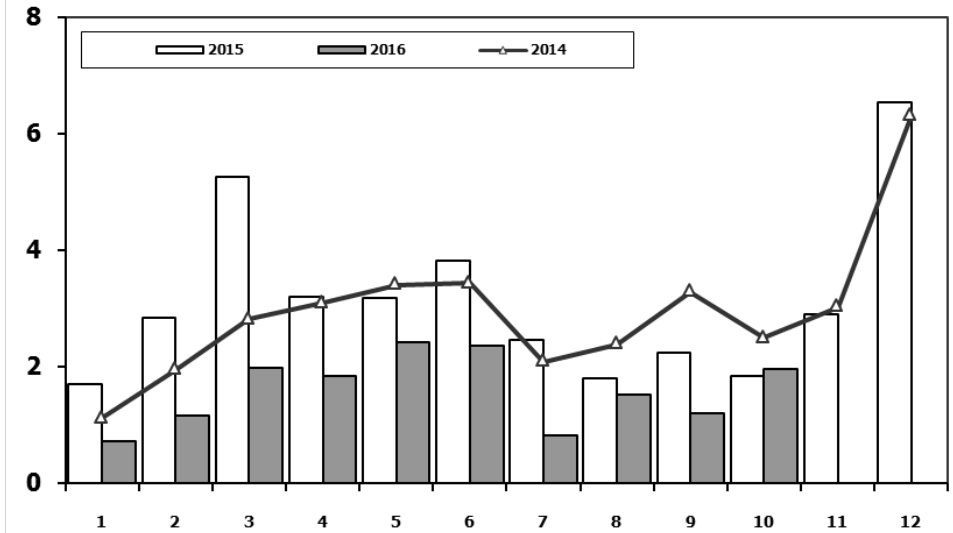
	1	2	3	4	5	6	7	8	9	10	11	12	8 Ay/Mo	Total
2006	4.018	2.139	3.201	3.599	5.529	3.401	2.450	2.608	2.820	2.872	3.697	3.373	26.945	39.707
2007	2.816	2.244	3.053	2.657	3.188	3.141	2.497	2.381	3.025	2.755	3.549	3.097	21.977	34.403
2008	2.770	1.855	3.395	3.081	2.769	2.400	2.232	2.485	1.856	1.773	1.305	1.101	20.987	27.022
2009	717	572	688	1.070	1.297	1.256	1.054	1.183	1.117	1.356	1.304	2.144	7.837	13.758
2010	1.111	1.991	2.330	3.039	2.567	2.638	1.965	3.019	2.806	4.424	3.978	6.168	18.660	36.036
2011	2.975	5.242	5.927	5.358	6.016	6.335	4.534	4.051	4.140	5.828	4.943	4.992	40.438	60.341
2012	2.362	1.983	4.348	6.579	6.273	4.569	3.837	3.158	3.618	4.027	4.807	4.757	33.109	50.318
2013	2.161	2.432	4.005	4.585	5.616	3.136	4.574	3.408	4.935	4.762	5.781	6.891	29.917	52.286
2014	2.169	3.512	4.476	4.905	5.094	5.028	4.233	4.920	5.619	5.743	6.250	7.409	34.337	59.358
2015	3.124	3.984	5.460	6.383	6.078	5.748	4.677	5.044	4.765	7.049	6.898	7.564	40.498	66.774
2016	3.739	4.731	7.067	6.546	6.575	5.543	3.833	5.134					43.168	43.168

Kaynak: TÜİK trafik kayıtları.
Rakamlar, son iki model yılına ait traktör tescillerinden oluşmaktadır.

Kamyon Pazarının Analizi (x1000) AYA > 5 Ton Truck Market Analysis (x1000) GVW > 5 Ton



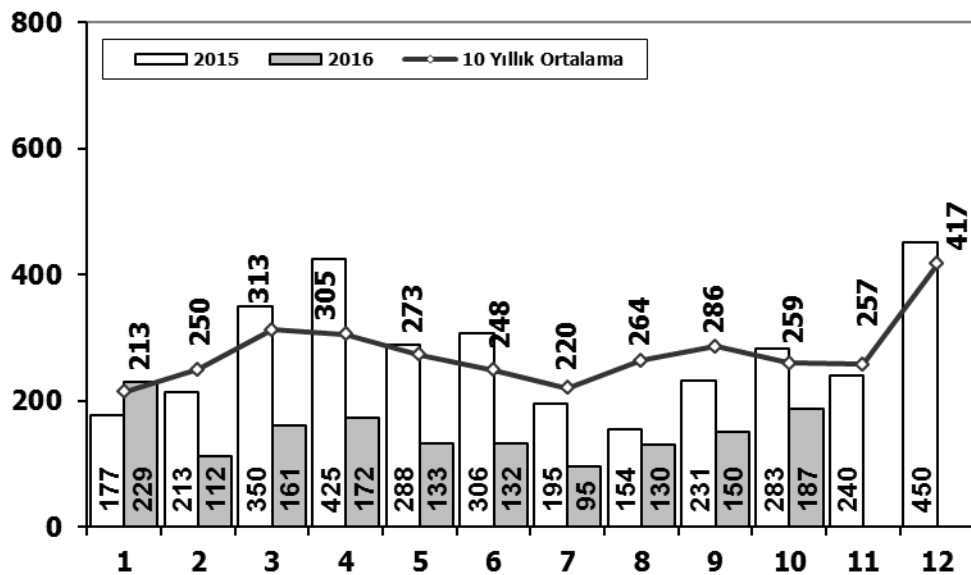
Kamyon Pazarı (x1000) AYA > 5 Ton Truck Market (x1000) GVW > 5 Ton



Aylar / Months	10 Yil Ort. 10 Yrs Avr. (x1000)	2016 (x1000)	%	1	2	3	4	5	6	7	8	9	10	11	12	10 Ay/Mo	Total	
1	1,4	0,7	-50,5	1.767	3.310	4.467	4.180	4.449	3.398	2.472	3.142	3.052	2.926	3.550	5.358	33.163	42.071	
2	2,2	1,2	-46,5	1.554	2.055	3.065	2.940	2.865	2.613	2.372	3.145	2.988	2.886	3.258	4.444	26.483	34.185	
3	3,2	2,0	-38,4	1.797	2.309	2.621	2.578	2.459	2.526	2.067	2.377	2.390	1.790	1.512	1.834	22.914	26.260	
4	2,8	1,8	-35,2	2009	771	759	1.034	1.342	1.355	1.651	1.156	1.205	1.780	866	981	2.015	11.919	14.915
5	3,0	2,4	-19,2	2010	777	968	1.772	1.807	1.966	2.205	2.093	2.446	2.444	3.071	3.136	5.677	19.549	28.362
6	3,0	2,4	-20,4	2011	2.552	3.292	4.418	3.754	3.803	3.749	1.996	2.478	3.081	2.774	3.108	5.787	31.897	40.792
7	2,2	0,8	-61,5	2012	1.375	2.159	3.595	2.697	3.321	3.250	2.450	2.277	2.991	2.244	3.006	5.000	26.359	34.365
8	2,3	1,5	-33,8	2013	1.077	1.931	3.127	2.720	3.145	2.951	2.411	1.845	2.554	1.801	3.173	5.025	23.562	31.760
9	2,7	1,2	-55,0	2014	1.117	1.949	2.818	3.092	3.405	3.438	2.083	2.390	3.281	2.494	3.028	6.313	26.067	35.408
10	2,3	2,0	-13,6	2015	1.705	2.841	5.270	3.208	3.190	3.824	2.463	1.798	2.244	1.848	2.902	6.540	28.391	37.833
Total	25,0	16,0	-36,1	2016	718	1.154	1.984	1.835	2.420	2.358	830	1.529	1.207	1.962			15.997	15.997

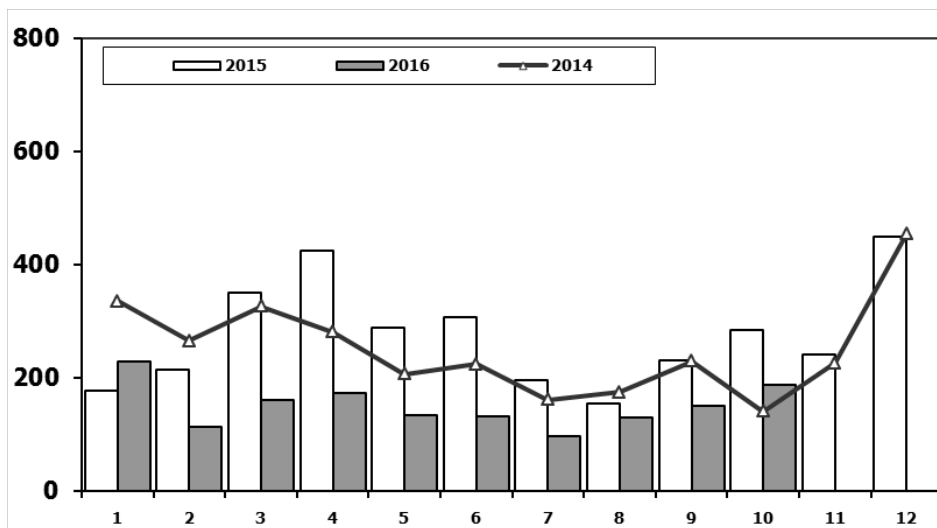
Midibüs Pazarının Analizi (7-9 mt / 25-35 Kişilik)

Midibus Market Analysis (7-9 mt / 25-35 Passengers)



Midibüs Pazarı (7-9 mt / 25-35 Kişilik Midibüs)

Midibus Market (7-9 mt / 25-35 Passengers)

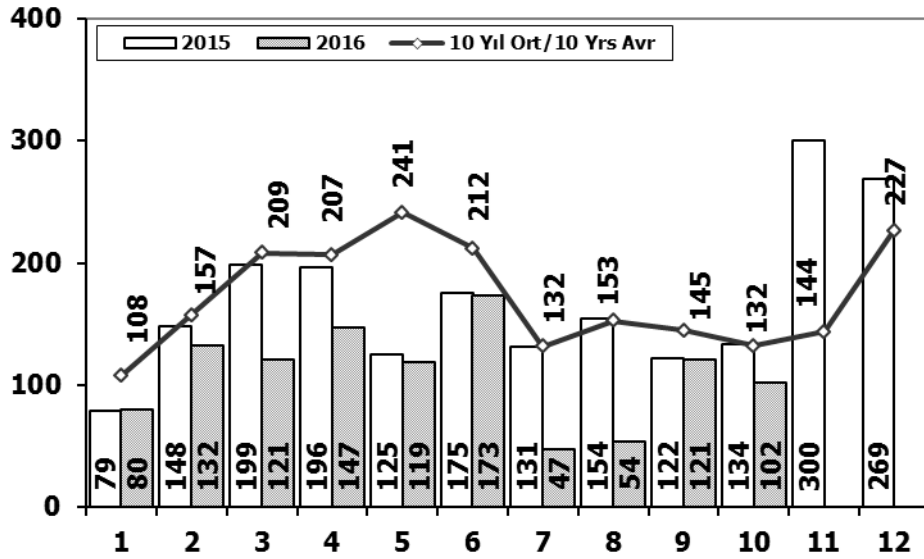


Aylar / Months	10 Yıl Ort. / 10 Yrs Avr.	2016	%
1	213	229	7
2	250	112	-55
3	313	161	-49
4	305	172	-44
5	273	133	-51
6	248	132	-47
7	220	95	-57
8	264	130	-51
9	286	150	-47
10	259	187	-28
Total	2.631	1.501	-43

	1	2	3	4	5	6	7	8	9	10	11	12	10 Ay/Mo	Total
2006	207	297	406	388	381	266	230	353	322	253	305	401	3.103	3.809
2007	207	272	404	238	302	283	164	365	399	279	283	465	2.913	3.661
2008	391	476	436	512	419	331	368	380	341	352	246	270	4.006	4.522
2009	154	124	160	220	174	198	160	175	168	143	206	323	1.676	2.205
2010	155	131	185	167	140	138	129	246	236	206	202	437	1.733	2.372
2011	138	195	294	316	280	258	211	305	301	276	260	270	2.574	3.104
2012	179	257	277	229	257	239	216	249	325	269	189	398	2.497	3.084
2013	191	268	289	276	283	241	367	235	305	392	415	697	2.847	3.959
2014	335	265	326	280	206	223	161	174	229	140	226	454	2.339	3.019
2015	177	213	350	425	288	306	195	154	231	283	240	450	2.622	3.312
2016	229	112	161	172	133	132	95	130	150	187			1.501	1.501

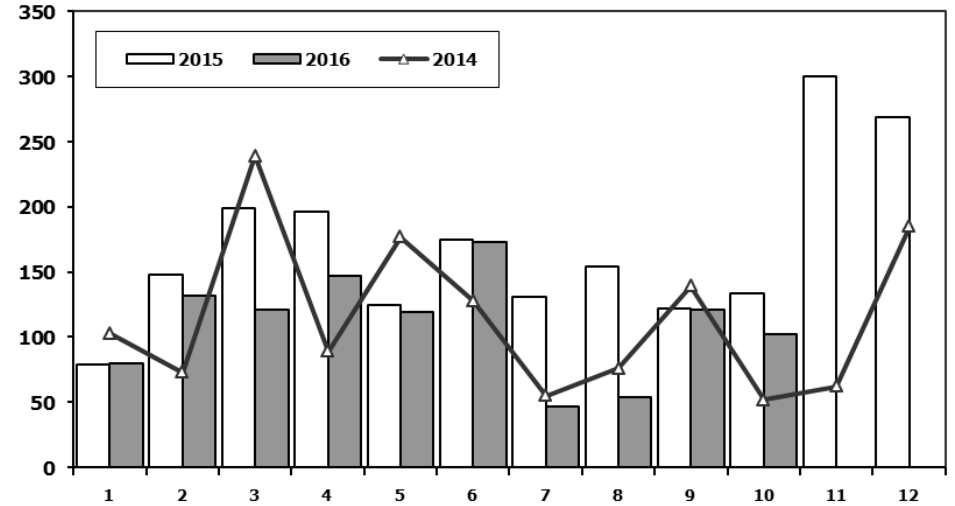
Otobüs Pazarının Analizi

Bus Market Analysis



Otobüs Pazarı

Bus Market

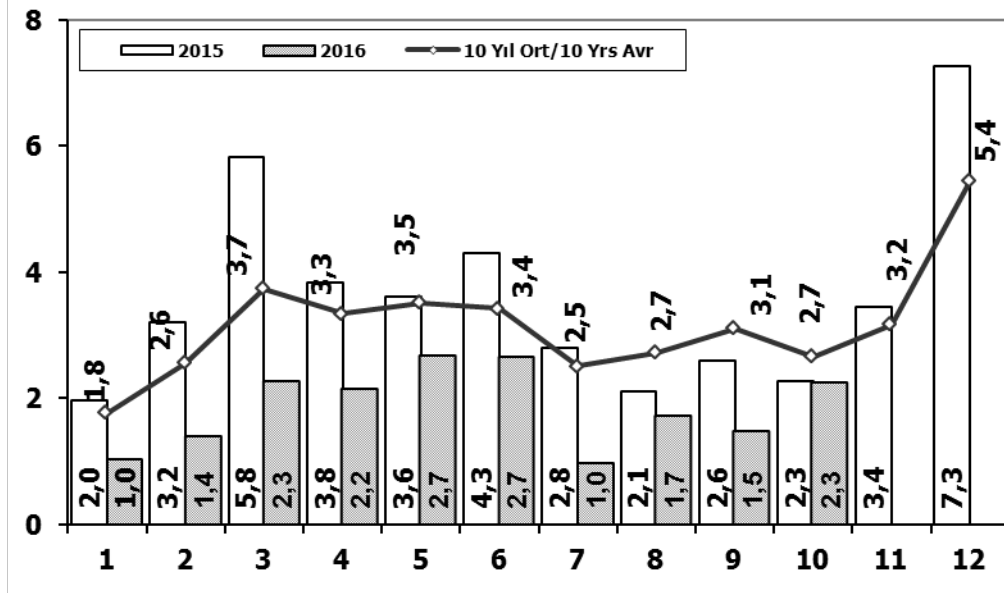


Aylar / Months	10 Yil Ort. / 10 Yrs Avr.	2016	%
1	108	80	-26
2	157	132	-16
3	209	121	-42
4	207	147	-29
5	241	119	-51
6	212	173	-18
7	132	47	-64
8	153	54	-65
9	145	121	-16
10	132	102	-23
Total	1.694	1.096	-35

	1	2	3	4	5	6	7	8	9	10	11	12	10 Ay/Mo	Total
2006	78	101	165	247	230	184	84	112	146	84	176	176	1.431	1.783
2007	72	191	129	89	150	91	91	103	110	168	163	241	1.194	1.598
2008	77	85	108	176	151	212	101	165	166	121	141	236	1.362	1.739
2009	100	221	226	224	167	186	85	103	58	75	53	125	1.445	1.623
2010	23	42	102	159	145	151	151	189	107	99	106	251	1.168	1.525
2011	76	198	218	306	364	283	113	189	132	169	170	314	2.048	2.532
2012	120	87	201	139	379	225	152	174	252	226	140	315	1.955	2.410
2013	349	425	498	444	525	483	352	260	215	192	128	156	3.743	4.027
2014	103	73	239	89	177	128	55	76	139	52	62	185	1.131	1.378
2015	79	148	199	196	125	175	131	154	122	134	300	269	1.463	2.032
2016	80	132	121	147	119	173	47	54	121	102			1.096	1.096

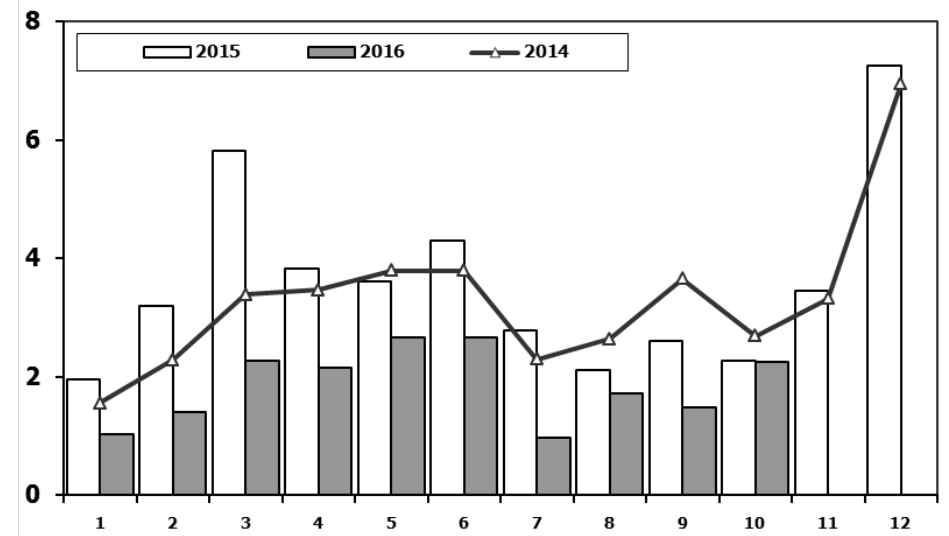
Ağır Ticari Araç Pazarının Analizi (x1000)

HCV Market Analysis (x1000)



Ağır Ticari Araç Pazarı (x1000)

HCV Market (x1000)

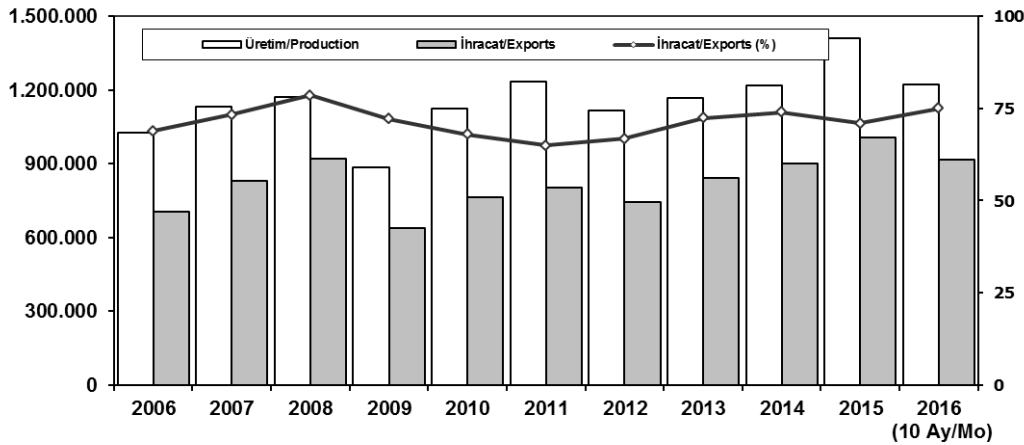


Aylar / Months	10 Yil Ort. 10 Yrs Avr. (x1000)	2016 (x1000)	%
1	1,8	1,0	-42,0
2	2,6	1,4	-45,5
3	3,7	2,3	-39,4
4	3,3	2,2	-35,6
5	3,5	2,7	-23,9
6	3,4	2,7	-22,1
7	2,5	1,0	-61,2
8	2,7	1,7	-37,2
9	3,1	1,5	-52,5
10	2,7	2,3	-15,4
Total	29,4	18,6	-36,7

	1	2	3	4	5	6	7	8	9	10	11	12	10 Ay/Mo	Total
2006	2.052	3.708	5.038	4.815	5.060	3.848	2.786	3.607	3.520	3.263	4.031	5.935	37.697	47.663
2007	1.833	2.518	3.598	3.267	3.317	2.987	2.627	3.613	3.497	3.333	3.704	5.150	30.590	39.444
2008	2.265	2.870	3.165	3.266	3.029	3.069	2.536	2.922	2.897	2.263	1.899	2.340	28.282	32.521
2009	1.025	1.104	1.420	1.786	1.696	2.035	1.401	1.483	2.006	1.084	1.240	2.463	15.040	18.743
2010	955	1.141	2.059	2.133	2.251	2.494	2.373	2.881	2.787	3.376	3.444	6.365	22.450	32.259
2011	2.766	3.685	4.930	4.376	4.447	4.290	2.320	2.972	3.514	3.219	3.538	6.371	36.519	46.428
2012	1.674	2.503	4.073	3.065	3.957	3.714	2.818	2.700	3.568	2.739	3.335	5.713	30.811	39.859
2013	1.617	2.624	3.914	3.440	3.953	3.675	3.130	2.340	3.074	2.385	3.716	5.878	30.152	39.746
2014	1.555	2.287	3.383	3.461	3.788	3.789	2.299	2.640	3.649	2.686	3.316	6.952	29.537	39.805
2015	1.961	3.202	5.819	3.829	3.603	4.305	2.789	2.106	2.597	2.265	3.442	7.259	32.476	43.177
2016	1.027	1.398	2.266	2.154	2.672	2.663	972	1.713	1.478	2.251			18.594	18.594

İhracat/Üretim (2006-2016) (Traktör dahil)

Exports/Production (2006-2016) (Including F. Tractor)



	2006	2007	2008	2009	2010	2011	2012	2013	2014	2015	2016 (10 Ay/Mo)
Üretim/Production	1.026.427	1.132.951	1.171.917	884.466	1.124.982	1.234.637	1.115.233	1.166.043	1.218.848	1.410.034	1.222.088
İhracat/Exports	706.402	829.879	920.763	637.855	763.670	801.112	745.354	843.467	902.194	1.007.267	916.873
İhracat/Exports (%)	69	73	79	72	68	65	67	72	74	71	75

Taşıt Araçları İhracatı (2014-2016)

Motor Vehicle Exports (2014-2016)

SEKTÖR/SECTOR	2014	2015	2015	2016	2016/2015 (%)
			10 Ay-10 Mo		
OTOMOBİL/ P.Cars	581.993	604.683	487.378	574.967	18
TİCARİ ARAÇLAR/ CV	303.187	387.652	319.487	330.471	3
* Kamyonet/Pick-Up	269.995	341.834	276.935	292.540	6
* Minibüs/Minibus	26.458	38.255	36.609	26.989	-26
* Kamyon/Truck	1.281	1.408	1.010	4.723	368
* Midibüs/Midibus	824	447	332	805	142
* Otobüs/Bus	4.629	5.708	4.601	5.414	18
TAŞIT ARAÇLARI /MV TOTAL	885.180	992.335	806.865	905.438	12
TRAKTÖR/F.TRACTOR	17.014	14.932	12.322	11.435	-7
TOTAL	902.194	1.007.267	819.187	916.873	12

Otomotiv Ana ve Yan Sanayii İhracatı (ABD \$)

CBU and CKD Exports - \$

Sektör / Sector	2012	2013	2014	2015	2015	2016	2016/2015 (%)
					Ocak-Ekim / January-October		
Toplam Yan Sanayi/Total Component Industry	8.215.636.677	9.065.017.539	9.504.013.791	8.643.538.318	7.236.786.732	7.486.936.487	3%
İç ve Dış Lastik / Tyres	1.199.566.307,01	1.130.005.891,78	1.126.709.610,14	961.494.045	821.474.877	822.516.626	0%
Emniyet Camı / Safety Glasses	120.615.917,59	135.230.309,67	143.208.298,99	124.569.031	103.931.629	100.010.869	-4%
Motor (Engine)	272.085.582,31	319.294.885,46	171.893.752,32	221.897.271	177.214.437	305.541.550	72%
Akümülatör / Batteries	249.831.846,25	306.451.449,47	289.101.198,21	220.618.374	175.796.705	168.807.053	-4%
Diğer Aksam ve Parça / Spare Parts&Components	6.373.537.023,45	7.174.035.002,35	7.773.100.931,83	7.114.959.599	5.958.369.084	6.090.060.389	2%
Toplam Ana Sanayi/Total Vehicle Industry	11.100.115.134	12.491.591.365	13.259.499.977	12.975.346.180	10.534.649.376	12.118.988.187	15%
Otobüs / Bus	855.424.303,62	937.790.962,87	985.983.007,01	1.024.134.143	823.937.871	989.820.207	20%
Midibüs-Minibüs / Minibus- Minibus	161.806.275,12	147.769.644,17	97.685.509,12	130.195.838	108.854.567	191.310.572	76%
Otomobil (P. Cars)	6.068.045.119,19	6.855.475.589,83	7.258.361.005,24	6.881.972.133	5.632.220.416	6.299.531.764	12%
Kamyon-Kamyonet/HCV-LCV	3.433.310.998,81	3.918.798.755,31	4.201.760.813,55	4.263.767.944	3.442.312.415	3.850.193.505	12%
Römork ve Yarı Römork/Trailer-Semi Trailer	195.093.508,21	218.385.731,69	252.354.014,20	252.432.565	194.046.952	230.590.480	19%
Çekici/Truck-Tractor	71.336.634,88	77.907.406,95	38.396.524,81	48.108.959	38.432.047	281.929.283	634%
Tarım Traktörü/Farm Tractor	315.098.293,75	335.463.274,61	424.959.103,39	374.734.597	294.845.110	275.612.376	-7%
Toplam/Total	19.315.751.810	21.556.608.904	22.763.513.769	21.618.884.498	17.771.436.108	19.605.924.673	10%

Kaynak: Uludağ İhracatçı Birlikleri . ÜİB tarafından OSD için özel olarak analiz edilen Otomotiv İhracatı kapsamında; ÜİB Türkiye Genel Otomotiv Endüstrisi sınıflandırmasına kıyasla "Römork ve Yarı Römork", "Tarım Traktörü" verileri dahil edilmekte; "Kullanılmış Araçlar", "İki Tekerlekli Taşıtlar", "Demiryolu Taşıtları" hariç tutulmaktadır.

Firma Bazında İhracat (Adet)
Export Of Member Companies (Unit)

FİRMALAR Companies	2014	2015	Ocak-Ekim January-October	
			2015	2016
			TOFAŞ	142.234
OYAK RENAULT	257.992	270.299	214.640	215.755
FORD OTOSAN	187.921	252.571	206.449	210.586
HYUNDAI ASSAN	179.793	201.276	163.555	169.710
TOYOTA	109.517	81.962	68.637	69.665
TÜRK TRAKTÖR	15.866	14.122	11.680	10.645
M. BENZ TÜRK	3.438	4.252	3.357	7.335
KARSAN	37	3.067	2.406	3.001
HONDA TÜRKİYE	1.560	2.220	1.770	1.905
MAN TÜRKİYE	937	1.493	1.267	1.423
HATTAT TARIM	1.148	810	642	790
OTOKAR	580	720	601	628
A.I.O.S.	748	291	193	556
TEMSA GLOBAL	423	441	321	545
GENEL TOPLAM	902.194	1.007.267	819.187	916.873

Kaynak: OSD

Sektör Bazında İhracat (1000 \$)
Exports on Sectorial Basis

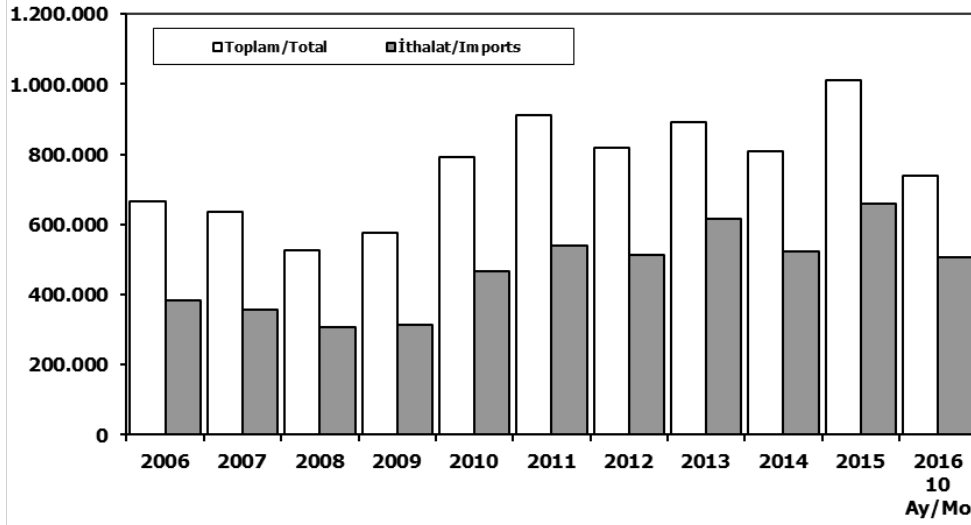
SEKTÖRLER (1.000 \$)	EKİM				OCAK - EKİM			
	2015	2016	Değişim ('16/'15)	Pay(16)	2015	2016	Değişim ('16/'15)	Pay(16)
Otomotiv Endüstrisi	2.024.754	2.190.304	8,2	18,7	17.388.355	19.269.239	10,8	16,6
Hazırgiyim ve Konfeksiyon	1.588.786	1.431.376	-9,9	12,2	14.162.233	14.326.823	1,2	12,4
Kimyevi Maddeler ve Mamulleri	1.305.032	1.239.188	-5,0	10,6	12.840.527	11.507.952	-10,4	9,9
Elektrik Elektronik ve Hizmet	1.039.304	899.484	-13,5	7,7	8.610.169	8.141.482	-5,4	7,0
Çelik	767.523	767.231	0,0	6,5	8.458.396	7.425.003	-12,2	6,4
Tekstil ve Hammaddeleri	753.919	693.138	-8,1	5,9	6.661.457	6.533.556	-1,9	5,6
Hububat, Bakliyat, Yağlı Tohumlar ve Mamulleri	587.624	570.964	-2,8	4,9	4.977.584	5.149.922	3,5	4,4
Demir ve Demir Dışı Metaller	569.425	508.579	-10,7	4,3	5.219.738	4.940.260	-5,4	4,3
Makine ve Aksamları	456.822	442.733	-3,1	3,8	4.534.434	4.356.962	-3,9	3,8
Mobilya, Kağıt ve Orman Ürünleri	365.311	349.060	-4,4	3,0	3.384.306	3.379.374	-0,1	2,9
TOPLAM	12.291.787	11.726.679	-4,6	100,0	120.406.064	115.952.259	-3,7	100,0

Kaynak: TİM

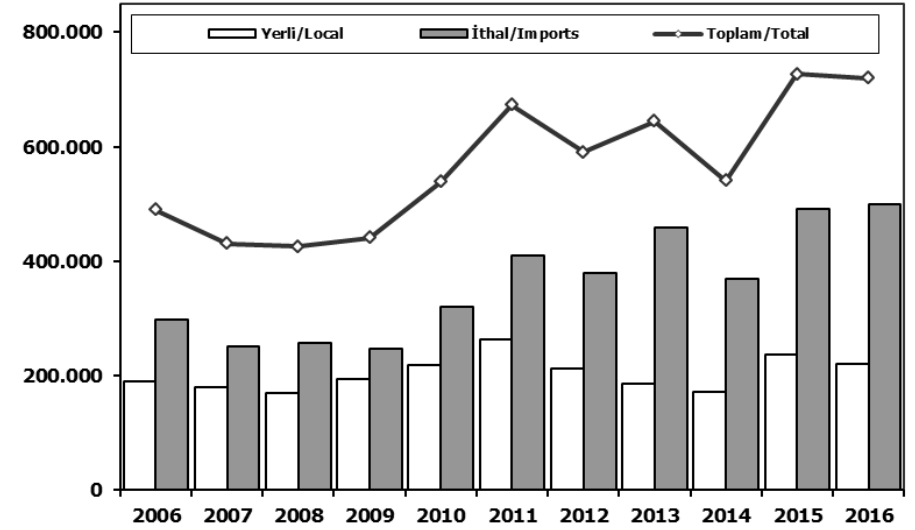
First 3 Sectors:

- 1- Automotive Industry
- 2- Ready Wear and Confection
- 3-Chemical Articles and Products

Toplam Pazar (Otomobil+T.Araç) Total Market (P.Cars+C.V)



Hafif Araçlar Pazarı (2006-2016 Ocak-Ekim) LV Market (2006-2016 January-October)

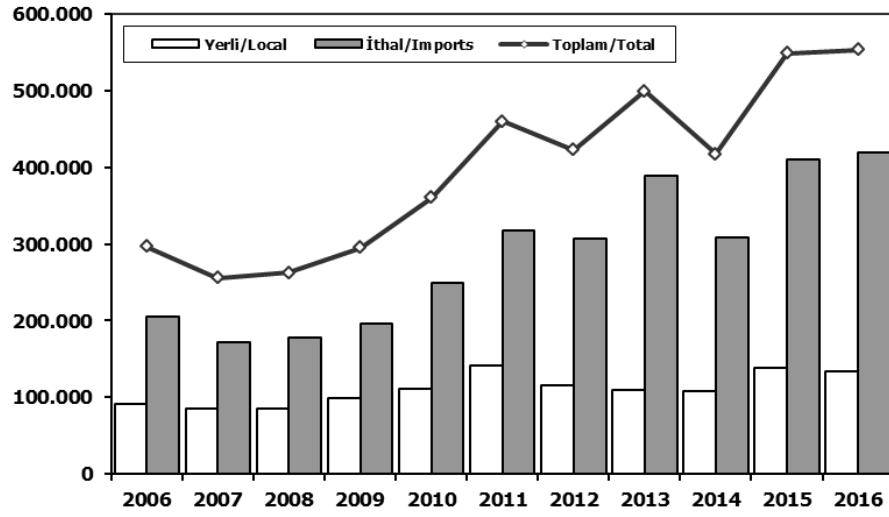


	2006	2007	2008	2009	2010	2011	2012	2013	2014	2015	2015 10 Ay/Mo	2016 10 Ay/Mo
Toplam/Total	665.515	634.206	526.544	575.869	793.172	910.867	817.620	893.124	807.486	1.011.194	759.719	738.093
İthalat/Imports	382.460	355.752	306.087	313.921	465.408	538.532	511.694	615.609	522.842	658.690	501.298	505.037
İthalat/Imports (%)	57	56	58	55	59	59	63	69	65	65	66	68

	2006	2007	2008	2009	2010	2011	2012	2013	2014	2015	2016
Yerli/Local	190.605	178.978	169.366	192.748	218.506	263.316	211.642	185.428	171.421	236.428	220.764
İthal/Imports	298.593	251.545	256.326	247.493	320.076	409.556	379.009	458.931	368.650	490.815	498.735
Toplam/Total	489.198	430.523	425.692	440.241	538.582	672.872	590.651	644.359	540.071	727.243	719.499
İthalat/Imports (%)	61	58	60	56	59	61	64	71	68	67	69

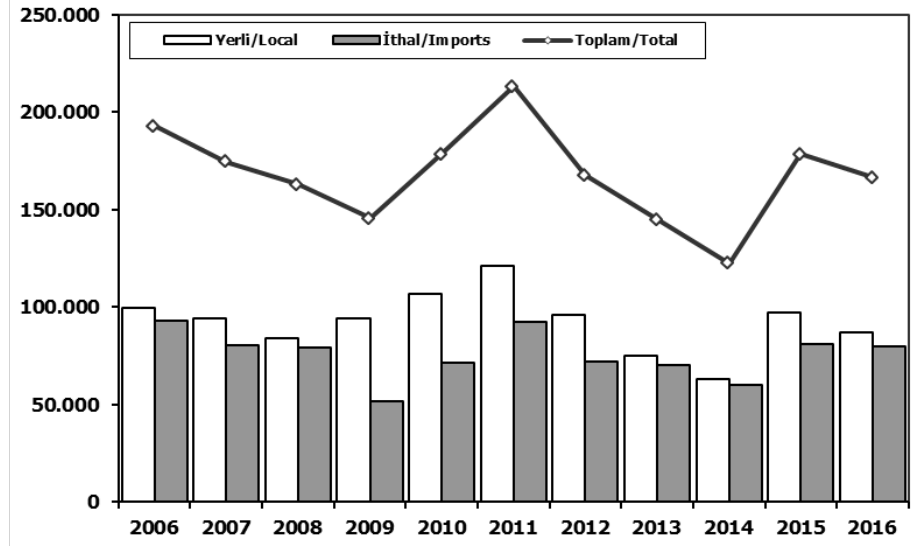
Otomobil Pazarı (2006-2016 Ocak-Ekim)

P.Cars Market (2006-2016 January-October)



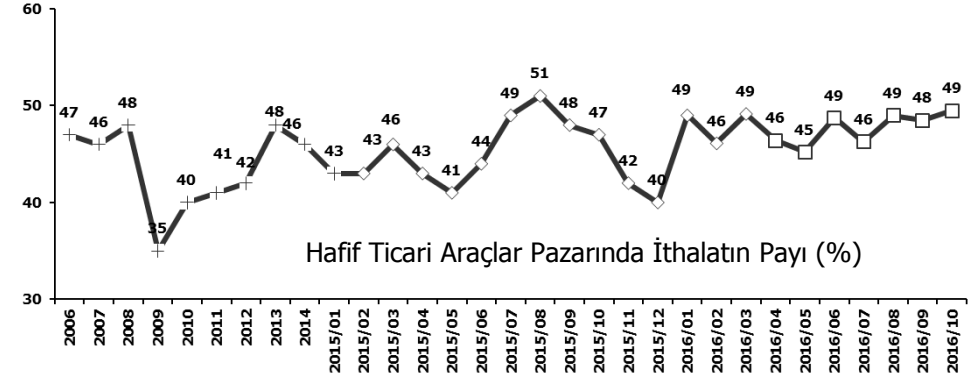
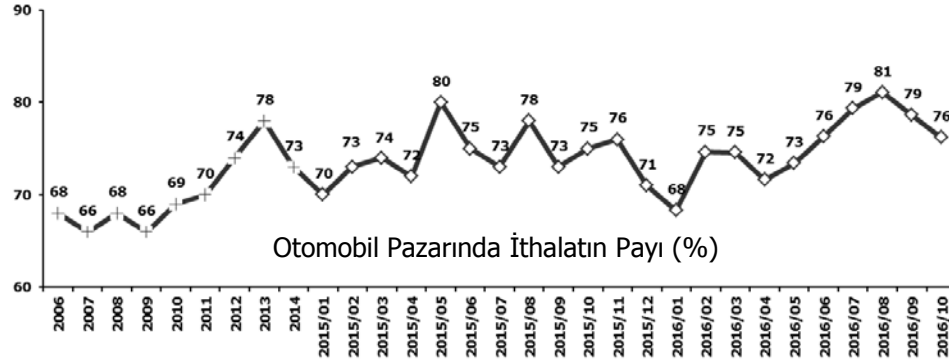
Hafif Ticari Araçlar Pazarı (2006-2016 Ocak-Ekim)

Light Commercial Vehicle Market (2006-2016 January-October)



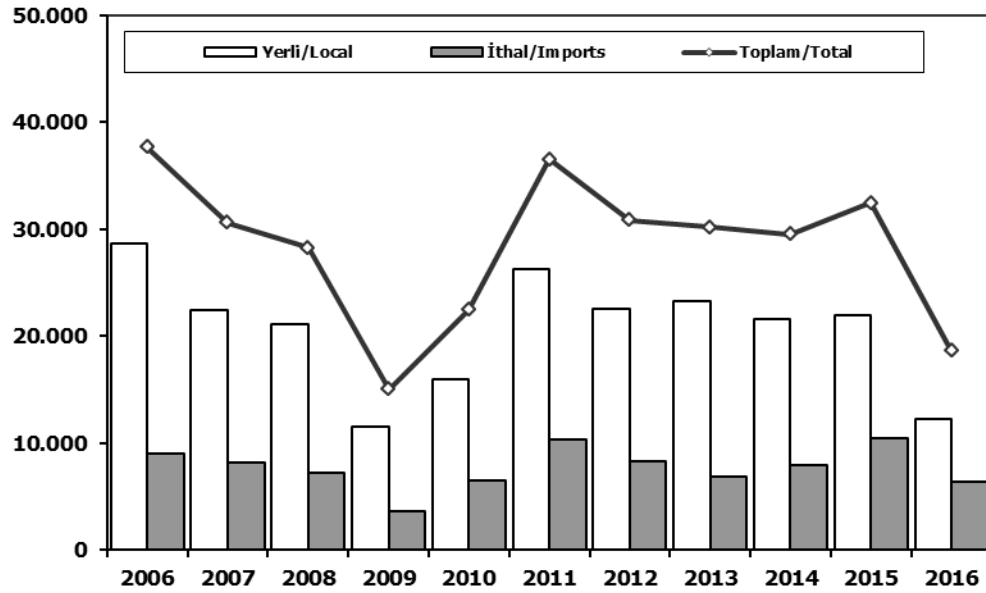
	2006	2007	2008	2009	2010	2011	2012	2013	2014	2015	2016
Yerli/Local	91.004	84.850	85.708	98.793	111.597	142.257	115.922	110.263	108.721	139.228	133.869
İthal/Imports	205.387	171.227	177.210	196.067	248.665	317.354	307.135	389.076	308.861	409.631	419.242
Toplam/Total	296.391	256.077	262.918	294.860	360.262	459.611	423.057	499.339	417.582	548.859	553.111
İthalat/Imports (%)	69	67	67	66	69	69	73	78	74	75	76

	2006	2007	2008	2009	2010	2011	2012	2013	2014	2015	2016
Yerli/Local	99.601	94.128	83.658	93.955	106.909	121.059	95.720	75.165	62.700	97.200	86.895
İthal/Imports	93.206	80.318	79.116	51.426	71.411	92.202	71.874	69.855	59.789	81.184	79.493
Toplam/Total	192.807	174.446	162.774	145.381	178.320	213.261	167.594	145.020	122.489	178.384	166.388
İthalat/Imports (%)	48	46	49	35	40	43	43	48	49	46	48



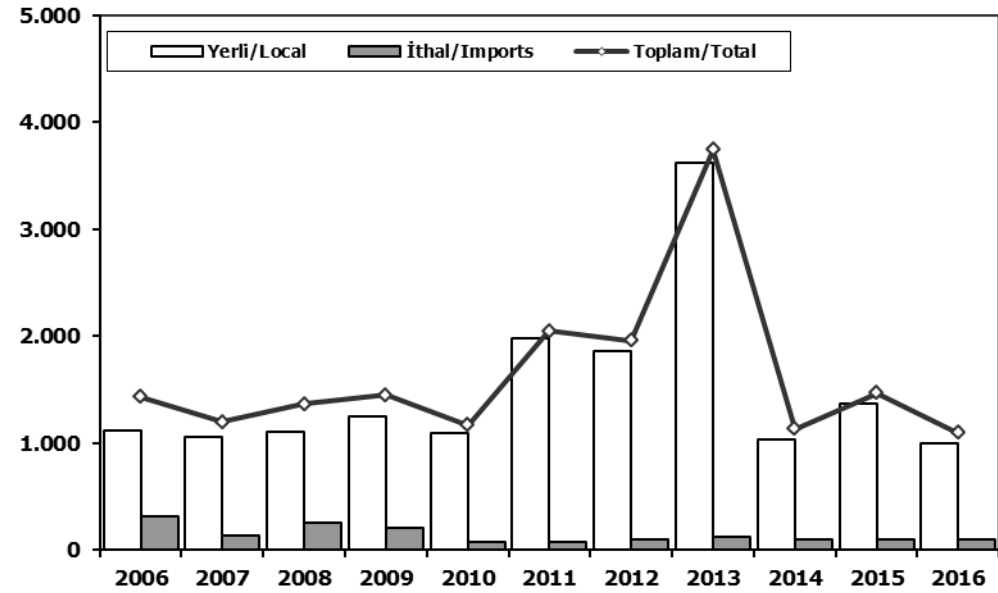
Ağır Ticari Araçlar Pazarı (2006-2016 Ocak-Ekim)

HCV Market (2006-2016 January-October)



Otobüs Pazarı (2006-2016 Ocak-Ekim)

Bus Market (2006-2016 January-October)

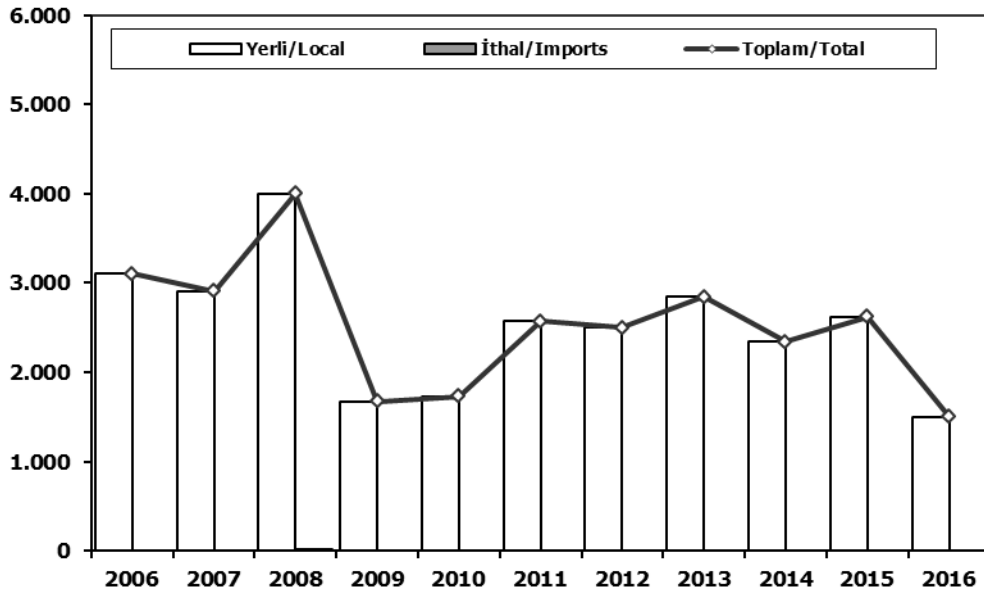


	2006	2007	2008	2009	2010	2011	2012	2013	2014	2015	2016
Yerli/Local	28.706	22.448	21.105	11.465	15.932	26.209	22.568	23.311	21.617	21.993	12.292
İthal/Imports	8.991	8.142	7.177	3.575	6.518	10.310	8.243	6.841	7.920	10.483	6.302
Toplam/Total	37.697	30.590	28.282	15.040	22.450	36.519	30.811	30.152	29.537	32.476	18.594
İthalat/Imports (%)	24	27	25	24	29	28	27	23	27	32	34

	2006	2007	2008	2009	2010	2011	2012	2013	2014	2015	2016
Yerli/Local	1.119	1.057	1.108	1.243	1.090	1.973	1.856	3.618	1.031	1.363	996
İthal/Imports	312	137	254	202	78	75	99	125	100	100	100
Toplam/Total	1.431	1.194	1.362	1.445	1.168	2.048	1.955	3.743	1.131	1.463	1.096
İthalat/Imports (%)	22	11	19	14	7	4	5	3	9	7	9

Midibüs Pazarı (2006-2016 Ocak-Ekim) (7-9 mt / 25-35 Kişilik)

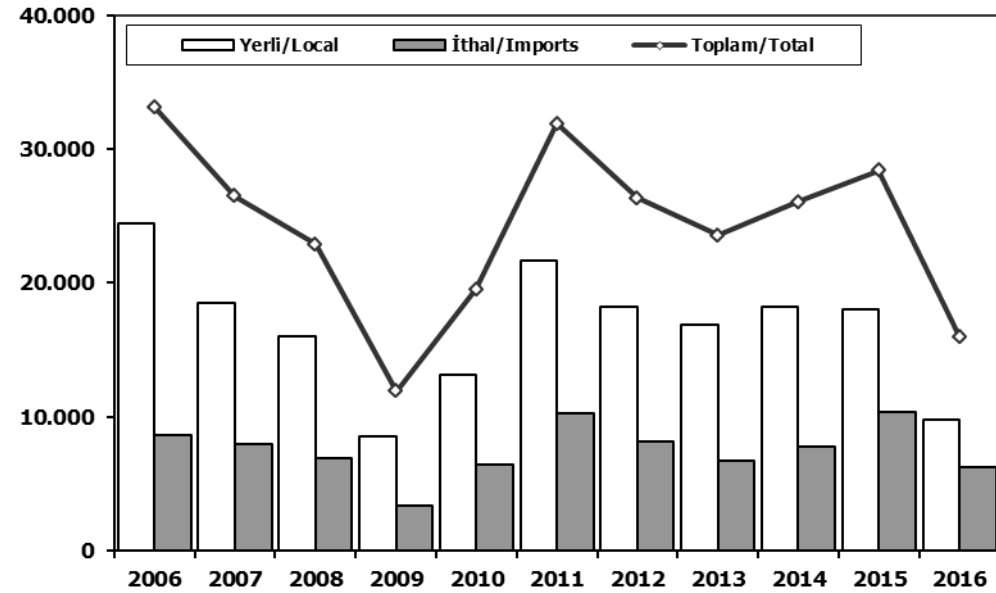
Midibus Market (2006-2016 January-October) (7-9 mt / 25-35 Passengers)



	2006	2007	2008	2009	2010	2011	2012	2013	2014	2015	2016
Yerli/Local	3.103	2.913	3.995	1.676	1.733	2.574	2.497	2.847	2.339	2.622	1.501
İthal/Imports	0	0	11	0	0	0	0	0	0	0	0
Toplam/Total	3.103	2.913	4.006	1.676	1.733	2.574	2.497	2.847	2.339	2.622	1.501
İthalat/Imports (%)	0	0	0	0	0	0	0	0	0	0	0

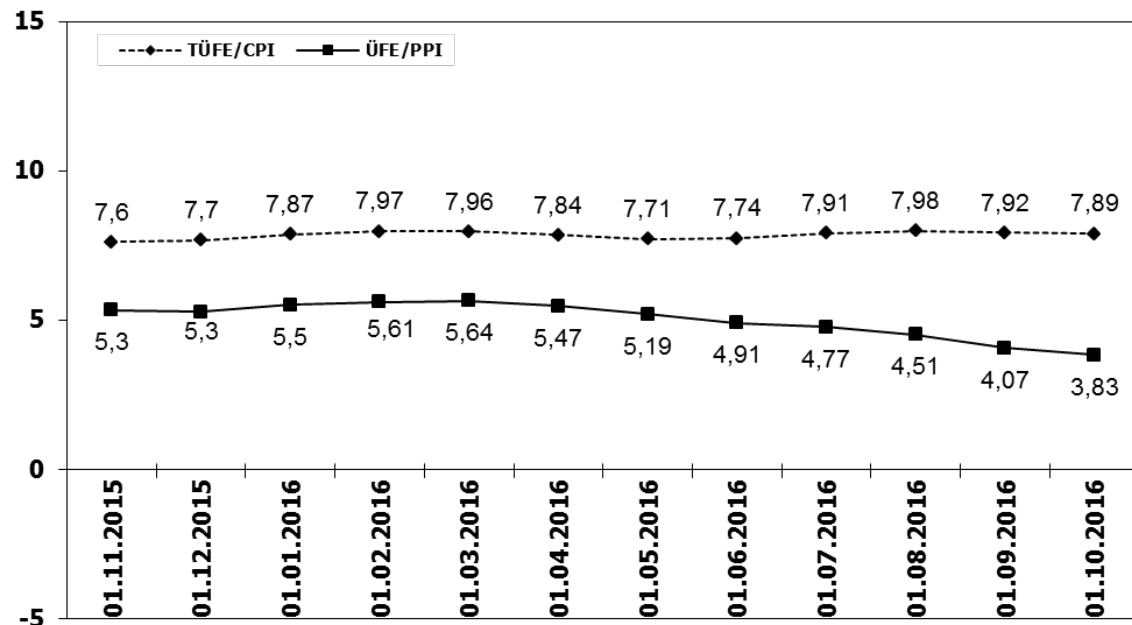
Kamyon Pazarı (2006-2016 Ocak-Ekim)

Truck Market (2006-2016 January-October)

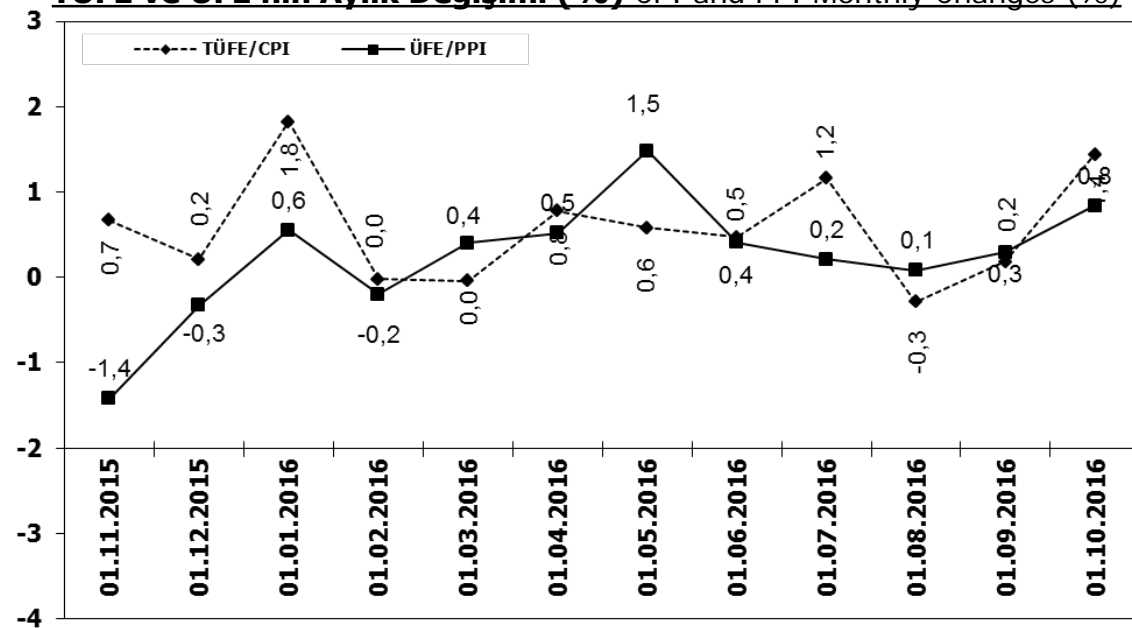


	2006	2007	2008	2009	2010	2011	2012	2013	2014	2015	2016
Yerli/Local	24.484	18.478	16.002	8.546	13.109	21.662	18.215	16.846	18.247	18.008	9.795
İthal/Imports	8.679	8.005	6.912	3.373	6.440	10.235	8.144	6.716	7.820	10.383	6.202
Toplam/Total	33.163	26.483	22.914	11.919	19.549	31.897	26.359	23.562	26.067	28.391	15.997
İthalat/Imports (%)	26	30	30	28	33	32	31	29	30	37	39

TÜFE ve ÜFE'nin Yıllık Değişimi (%) CPI and PPI Yearly Changes (%)



TÜFE ve ÜFE'nin Aylık Değişimi (%) CPI and PPI Monthly Changes (%)



2016 Otomotiv Sanayii Dış Satışlar

2016 Automotive Industry Exports Sales

TIPLER-Types	Ocak January	Şubat February	Mart March	Nisan April	Mayıs May	Haziran June	Temmuz July	Ağustos August	Eylül September	Ekim October	Kasım November	Aralık December	TOPLAM Total
Otomobil	38.621	60.149	60.631	55.557	60.692	63.103	49.696	51.748	60.526	74.244	0	0	574.967
OTOMOBİL-Pass. Car	38.621	60.149	60.631	55.557	60.692	63.103	49.696	51.748	60.526	74.244	0	0	574.967
TIÇARI ARAÇ	30.179	38.548	38.174	37.583	33.586	37.062	31.770	18.402	29.872	35.295	0	0	330.471
* KAMYONET-Pick Up	28.779	36.960	36.393	35.857	28.361	29.086	26.410	15.178	25.554	29.962	0	0	292.540
* KAMYON-Truck	158	335	325	420	501	552	741	450	776	465	0	0	4.723
* MIDİBÜS-Midibus	37	39	68	72	82	88	51	182	85	101	0	0	805
* MINİBÜS-Minibus	723	605	804	674	4.053	6.697	4.247	2.034	2.990	4.162	0	0	26.989
* OTOBÜS-Bus	482	609	584	560	589	639	321	558	467	605	0	0	5.414
Traktör	1.340	1.122	1.340	1.327	1.215	1.187	1.339	635	671	1.259	0	0	11.435
TRAKTÖR-F.Tractor	1.340	1.122	1.340	1.327	1.215	1.187	1.339	635	671	1.259	0	0	11.435
TOPLAM-Total	70.140	99.819	100.145	94.467	95.493	101.352	82.805	70.785	91.069	110.798	0	0	916.873

Otomobil													
FİRMALAR-Companies	Ocak January	Şubat February	Mart March	Nisan April	Mayıs May	Haziran June	Temmuz July	Ağustos August	Eylül September	Ekim October	Kasım November	Aralık December	TOPLAM Total
FORD OTOSAN	1.559	1.341	1.523	1.515	1.063	1.660	1.261	1.119	1.392	1.377	0	0	13.810
HONDA TÜRKİYE	149	0	526	60	230	124	63	106	544	103	0	0	1.905
HYUNDAI ASSAN	18.350	18.300	19.800	16.180	17.300	19.100	11.300	14.560	16.420	18.400	0	0	169.710
OYAK RENAULT	9.605	25.721	24.792	24.166	27.251	26.136	17.015	17.660	19.188	24.221	0	0	215.755
TOFAŞ	4.667	8.671	8.032	8.530	9.984	13.068	11.365	9.122	14.309	16.374	0	0	104.122
TOYOTA	4.291	6.116	5.958	5.106	4.864	3.015	8.692	9.181	8.673	13.769	0	0	69.665
TOPLAM-Total	38.621	60.149	60.631	55.557	60.692	63.103	49.696	51.748	60.526	74.244	0	0	574.967

Kamyonet													
FİRMALAR-Companies	Ocak January	Şubat February	Mart March	Nisan April	Mayıs May	Haziran June	Temmuz July	Ağustos August	Eylül September	Ekim October	Kasım November	Aralık December	TOPLAM Total
FORD OTOSAN	18.721	22.710	23.358	20.607	12.878	14.587	16.204	9.650	13.731	17.048	0	0	169.494
KARŞAN	67	229	77	35	392	421	319	350	354	511	0	0	2.755
OTOKAR	0	0	33	0	0	9	0	24	18	0	0	0	84
TOFAŞ	9.991	14.021	12.925	15.215	15.091	14.069	9.887	5.154	11.451	12.403	0	0	120.207
TOPLAM-Total	28.779	36.960	36.393	35.857	28.361	29.086	26.410	15.178	25.554	29.962	0	0	292.540

Minibüs													
FİRMALAR-Companies	Ocak January	Şubat February	Mart March	Nisan April	Mayıs May	Haziran June	Temmuz July	Ağustos August	Eylül September	Ekim October	Kasım November	Aralık December	TOPLAM Total
FORD OTOSAN	721	595	749	674	4.050	6.689	4.240	2.023	2.963	4.100	0	0	26.804
KARŞAN	2	10	55	0	3	8	7	11	27	62	0	0	185
TOPLAM-Total	723	605	804	674	4.053	6.697	4.247	2.034	2.990	4.162	0	0	26.989

Kamyon													
FİRMALAR-Companies	Ocak January	Şubat February	Mart March	Nisan April	Mayıs May	Haziran June	Temmuz July	Ağustos August	Eylül September	Ekim October	Kasım November	Aralık December	TOPLAM Total
A.I.O.S.	0	0	0	0	1	0	0	0	1	0	0	0	2
FORD OTOSAN	12	13	71	64	38	62	23	57	87	51	0	0	478
KARŞAN	0	0	0	1	0	0	0	0	0	0	0	0	1
M. BENZ TÜRK	146	322	254	355	462	490	718	393	688	414	0	0	4.242
TOPLAM-Total	158	335	325	420	501	552	741	450	776	465	0	0	4.723

Midibüs													
FİRMALAR-Companies	Ocak January	Şubat February	Mart March	Nisan April	Mayıs May	Haziran June	Temmuz July	Ağustos August	Eylül September	Ekim October	Kasım November	Aralık December	TOPLAM Total
A.I.O.S.	14	15	29	30	42	54	16	133	67	34	0	0	434
KARŞAN	1	2	0	1	2	0	2	1	0	0	0	0	9
OTOKAR	7	12	24	37	25	31	32	26	13	50	0	0	257
TEMSA GLOBAL	15	10	15	4	13	3	1	22	5	17	0	0	105
TOPLAM-Total	37	39	68	72	82	88	51	182	85	101	0	0	805

Otobüs													
FİRMALAR-Companies	Ocak January	Şubat February	Mart March	Nisan April	Mayıs May	Haziran June	Temmuz July	Ağustos August	Eylül September	Ekim October	Kasım November	Aralık December	TOPLAM Total
A.I.O.S.	0	1	6	7	18	24	1	17	35	11	0	0	120
KARŞAN	0	0	0	0	0	20	0	10	21	0	0	0	51
M. BENZ TÜRK	316	366	344	274	342	295	199	349	246	362	0	0	3.093
MAN TÜRKİYE	131	231	170	151	102	178	67	100	127	166	0	0	1.423
OTOKAR	17	10	33	43	38	72	30	14	16	14	0	0	287
TEMSA GLOBAL	18	1	31	85	89	50	24	68	22	52	0	0	440
TOPLAM-Total	482	609	584	560	589	639	321	558	467	605	0	0	5.414

Traktör													
FİRMALAR-Companies	Ocak January	Şubat February	Mart March	Nisan April	Mayıs May	Haziran June	Temmuz July	Ağustos August	Eylül September	Ekim October	Kasım November	Aralık December	TOPLAM Total
HATTAT TARIM	33	107	82	151	145	111	0	35	52	74	0	0	790
TÜRK TRAKTÖR	1.307	1.015	1.258	1.176	1.070	1.076	1.339	600	619	1.185	0	0	10.645
TOPLAM-Total	1.340	1.122	1.340	1.327	1.215	1.187	1.339	635	671	1.259	0	0	11.435

2016 Yılı İthal Hafif Araç Satışları 2016 Light Vehicles Import Sales

2016 YILI İTHAL OTOMOBİL SATIŞLARI / P.Cars Import 2016

	2015 TOPLAMI 2015 Total	1	2	3	4	5	6	7	8	9	10	11	12	2016 TOPLAMI 2016 Total
VOLKSWAGEN	107.401	2.792	5.763	8.197	7.811	9.597	9.561	7.239	8.438	8.026	9.211			76.635
OPEL	47.000	1.263	2.521	3.936	4.775	5.754	5.809	3.495	4.116	3.336	4.630			39.635
FORD	43.341	972	2.733	3.347	3.141	3.231	4.439	2.025	2.294	1.813	2.467			26.462
DACIA	37.257	1.235	1.963	3.402	3.555	4.179	3.799	2.680	3.120	3.118	3.989			31.040
RENAULT	32.683	1.258	2.007	4.030	3.336	3.983	3.759	2.680	4.073	2.471	3.074			31.498
B.M.W	31.221	496	2.042	2.080	2.332	3.174	2.640	1.856	2.230	1.806	2.205			20.861
MERCEDES BENZ	30.333	1.091	1.701	2.480	2.305	3.080	3.786	1.651	2.456	2.758	2.378			23.686
NISSAN	26.421	971	1.534	2.989	2.684	2.546	2.584	1.212	2.183	1.957	2.329			20.989
HYUNDAI	25.164	1.148	1.499	2.651	2.344	2.649	2.296	1.286	1.890	1.947	2.254			19.964
PEUGEOT	22.808	540	1.730	2.526	1.557	2.349	2.099	1.497	1.601	2.178	2.295			18.372
SKODA	22.107	715	1.435	2.640	2.663	2.787	2.865	1.661	2.357	1.854	2.685			21.662
AUDI	20.279	911	1.200	1.455	2.148	2.352	1.961	905	903	1.541	2.448			15.824
SEAT	16.911	502	853	1.443	2.130	1.726	1.929	1.870	1.943	1.496	2.121			16.013
CITROEN	16.520	394	366	1.562	1.684	1.929	1.613	1.221	1.080	1.519	1.381			12.749
KIA	13.873	263	574	1.080	1.461	979	1.281	1.435	1.378	954	1.092			10.497
TOYOTA	10.949	149	588	955	836	1.040	913	754	1.104	858	1.302			8.499
VOLVO	6.939	187	194	311	335	512	465	130	203	222	291			2.850
HONDA	5.413	366	669	1.077	535	629	617	777	777	852	606			6.740
FIAT	5.241	162	247	336	278	266	232	171	262	212	207			2.373
JEEP	3.507	92	161	204	188	187	218	99	152	169	192			1.662
MAZDA	1.761	50	67	114	157	171	137	127	84	88	88			1.083
MINI (İngiliz)	1.739	101	74	134	166	161	143	83	123	147	152			1.284
SUBARU	1.737	73	112	152	148	165	122	74	103	101	113			1.163
LAND ROVER	1.577	46	131	318	186	200	201	103	215	169	136			1.705
MITSUBISHI	1.366	39	71	53	48	79	57	45	61	50	58			561
PORSCHE	861	55	40	55	59	61	68	32	59	70	91			590
ALFA ROMEO	847	12	75	149	58	68	48	33	31	32	37			543
SSANGYONG	605	19	23	37	34	76	70	23	55	47	45			429
PROTON	500	10	7	10	12	12	0	0	0	0	0			51
CHERY	394	30	23	12	9	22	25	22	1	0	0			144
JAGUAR	336	20	25	34	31	33	48	35	41	42	50			359
SUZUKI	177	7	0	194	151	332	422	234	370	462	575			2.747
TATA	168	0	0	0	0	0	0	0	0	0	0			0
SMART	88	0	0	16	13	24	12	5	6	14	18			108
MASERATI	73	1	6	1	5	3	6	1	5	5	12			45
INFINITI	43	0	0	0	4	6	23	6	7	11	12			69
GEELY	25	0	0	0	0	0	0	0	0	0	0			0
BENTLEY	19	0	1	0	0	1	0	1	0	3	1			7
LEXUS	13	0	0	6	7	2	3	4	5	4	7			38
FERRARI	10	3	1	0	4	3	1	0	0	1	1			14
LAMBORGHINI	6	0	1	0	1	0	1	0	3	0	0			6
LANCIA	2	0	0	0	0	0	0	0	0	0	0			0
ASTON MARTIN	0	2	1	2	4	4	3	2	3	4	1			26
DS	0	8	34	42	35	24	14	19	34	32	17			259
TOPLAM	537.715	15.983	30.472	48.030	47.230	54.396	54.270	36.155	43.766	40.369	48.571	0	0	419.242

2016 YILI İTHAL HAFİF TİCARİ ARAÇ SATIŞLARI / Light Commercial Vehicles Import 2016

	2015 TOPLAMI 2015 Total	1	2	3	4	5	6	7	8	9	10	11	12	2016 TOPLAMI 2016 Total
VOLKSWAGEN	31.642	1.736	2.391	3.096	2.674	2.839	2.845	1.845	2.729	2.284	3.018			25.457
RENAULT	15.617	451	602	983	1.442	1.466	1.333	761	864	1.189	1.483			10.574
FIAT	9.072	272	374	615	333	343	417	309	444	521	495			4.123
MERCEDES BENZ	8.457	360	549	925	671	684	760	253	485	553	651			5.891
PEUGEOT	8.212	467	284	471	835	532	1.183	463	819	472	761			6.287
DACIA	7.555	221	228	380	512	572	429	320	389	502	249			3.802
CITROEN	6.511	207	213	752	670	398	690	477	592	528	636			5.163
KIA	4.110	155	196	387	324	464	419	211	354	209	355			3.074
FORD	4.028	85	189	298	255	428	596	370	487	344	510			3.562
MITSUBISHI	3.897	324	151	312	329	220	385	244	352	240	168			2.725
TOYOTA	2.928	34	178	514	402	549	378	310	549	543	518			3.975
IVECO	2.710	88	131	173	163	246	172	89	142	161	199			1.564
HYUNDAI	1.612	71	117	138	163	186	158	153	240	176	214			1.616
ISUZU	333	57	34	90	25	23	32	73	53	24	96			507
SSANGYONG	303	3	5	16	19	31	38	10	22	17	49			210
TATA	228	9	0	0	0	0	0	0	0	0	0			9
NISSAN	7	0	0	175	126	92	121	110	91	116	123			954
MAZDA	0	0	0	0	0	0	0	0	0	0	0			0
TOPLAM	107.222	4.540	5.642	9.325	8.943	9.073	9.956	5.998	8.612	7.879	9.525	0	0	79.493