



OTOMOTİV SANAYİİ DERNEĞİ
AUTOMOTIVE MANUFACTURERS ASSOCIATION

AYLIK RAPOR

Automotive Industry Monthly Report

Aralık / December 2016

- **Üretim**/Production
- **Satış**/Sales
- **İthalat**/Imports
- **İhracat**/Exports

OSD "OICA" Üyesidir



OSD is a Member of "OICA"

2016 Aralık Ayı Özeti / 2016 December Summary

KONULAR/MATTERS		ARALIK/DECEMBER			YILLIK/YEARLY		
		2015	2016	2016/2015 (%)	2015	2016	2016/2015 (%)
Üretim/Production	Toplam/Total	125.752	156.115	24	1.358.796	1.485.927	9
	Otomobil/P.Cars	74.688	106.963	43	791.027	950.888	20
Pazar/Market	Toplam/Total	163.432	144.928	-11	1.011.194	1.007.857	0
	Otomobil/P.Cars	114.340	108.044	-6	725.596	756.938	4
İthalat/Import	Toplam/Total	99.585	91.990	-8	658.690	681.308	3
	Otomobil/P.Cars	80.726	75.065	-7	538.812	565.045	5
İhracat/Export	Toplam/Total	92.283	118.902	29	992.335	1.141.382	15
	Otomobil/P.Cars	60.122	87.107	45	604.683	745.709	23
İhracat / Export (\$)	Toplam/Total **	1.869.513.819	2.351.716.976	26	21.619.324.284	24.249.990.377	12
	Otomobil/P.Cars	617.596.412	1.086.673.356	76	6.881.867.274	8.336.946.503	21

PARAMETRELER / PARAMETERS		ARALIK/DECEMBER			YILLIK/YEARLY		
		2015	2016	2016/2015 (%)	2015	2016	2016/2015 (%)
ÜFE/PPI		-0,33	2,98	**	5,71	9,94	**
TÜFE/CPI		0,21	1,64	**	8,81	8,53	**
Sanayi Endeksi/Industry Index		-0,27	3,26	**	6,38	12,07	**
\$ (*)		2,9032	3,4813	20	2,7312	3,0053	10
EURO (*)		3,1223	3,6834	18	3,0180	3,3187	10
Japon Yeni (*)		2,3725	2,9992	26	2,2437	2,7441	22

(*) Ortalama Değerler / Average Values

(**) Toplam Sanayi / Total Industry Including Components

*Raporda yer alan üretim adetleri yalnızca OSD üyelerinin verilerini göstermektedir.
Production units in this report only show the data of OSD members.*

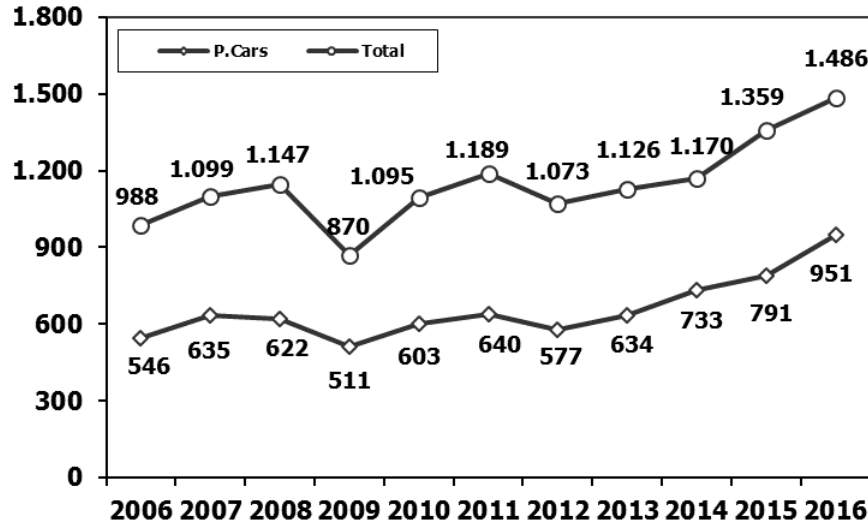
2015/2016 Yılları Üretim 2015/2016 Production

K.KAMYON : AYA 3.5-12 Ton (L.Truck:GVW 3.5-12 Ton)

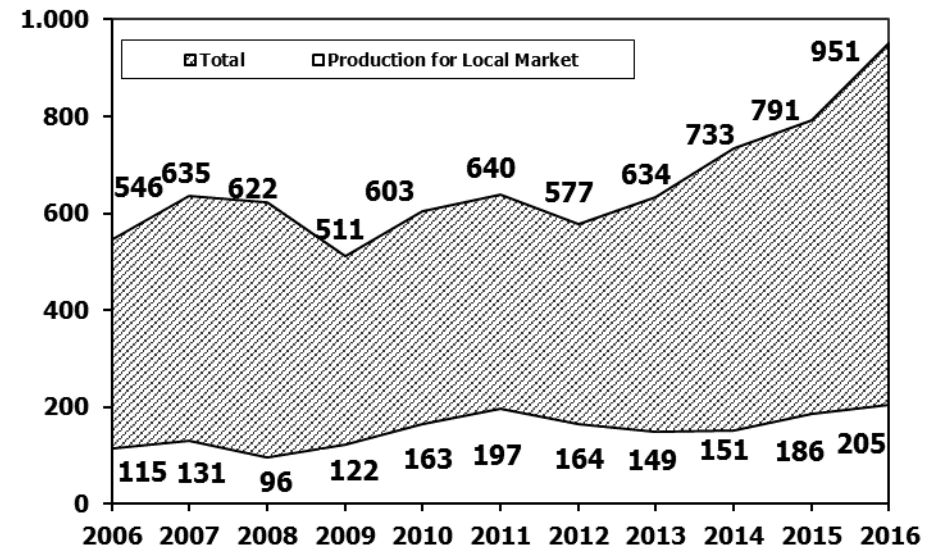
B.KAMYON : AYA 12 Ton'dan Büyük (M.Truck:GVW 12 Ton And Up)

TİPLER	ARALIK AYI ÜRETİMİ December Production		12 AYLIK ÜRETİM 12 Months Production		DEĞİŞİM % Percent Change %	
	2015	2016	2015	2016	ARALIK December	12 AY 12 Months
OTOMOBİL - Pass.Car	74.688	106.963	791.027	950.888	43	20
TİCARİ ARAÇLAR - Commercial Vehicles	51.064	49.152	567.769	535.039	-4	-6
* B. KAMYON - M. Truck	3.067	903	30.968	14.826	-71	-52
* K. KAMYON - L. Truck	946	276	4.870	2.548	-71	-48
* KAMYONET - Pick Up	43.176	43.003	468.933	461.837	0	-2
* OTOBÜS - Bus	921	495	8.789	8.083	-46	-8
* MİNİBÜS - Minibus	2.013	4.239	47.078	44.415	111	-6
* MİDİBÜS - Midibus	941	236	7.131	3.330	-75	-53
TAŞIT ARAÇLARI TOPLAM - MV Total	125.752	156.115	1.358.796	1.485.927	24	9
TRAKTÖR - F.Tractor	3.411	3.480	51.238	50.746	2	-1
GENEL TOPLAM - Grand Total	129.163	159.595	1.410.034	1.536.673	24	9

Toplam Üretim ve Otomobil Üretimi (x1000) (Ocak-Aralık)
Total & P.Cars Production (x1000) (January-December)

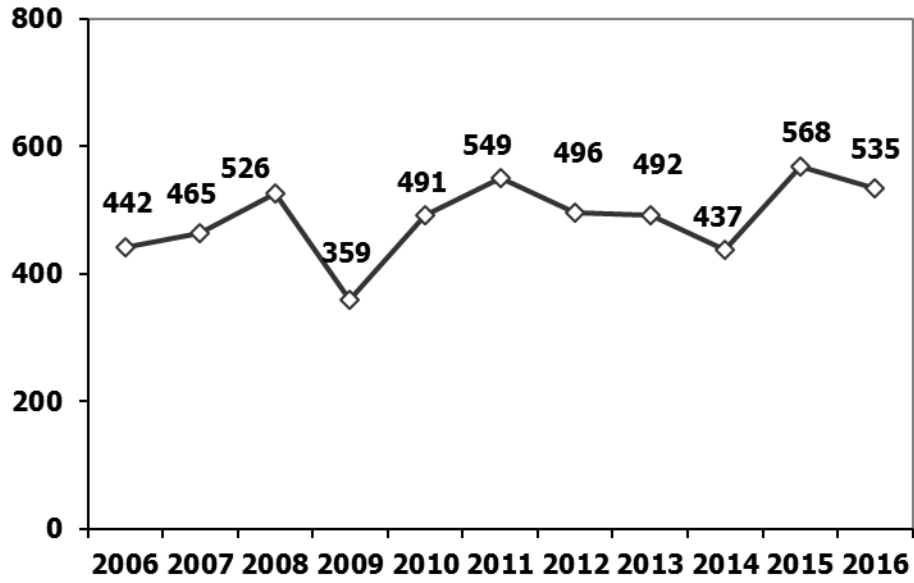


Otomobil Üretimi ve İhracat (x1000) (Ocak-Aralık)
P.Cars Production & Exports (x1000) (January-December)



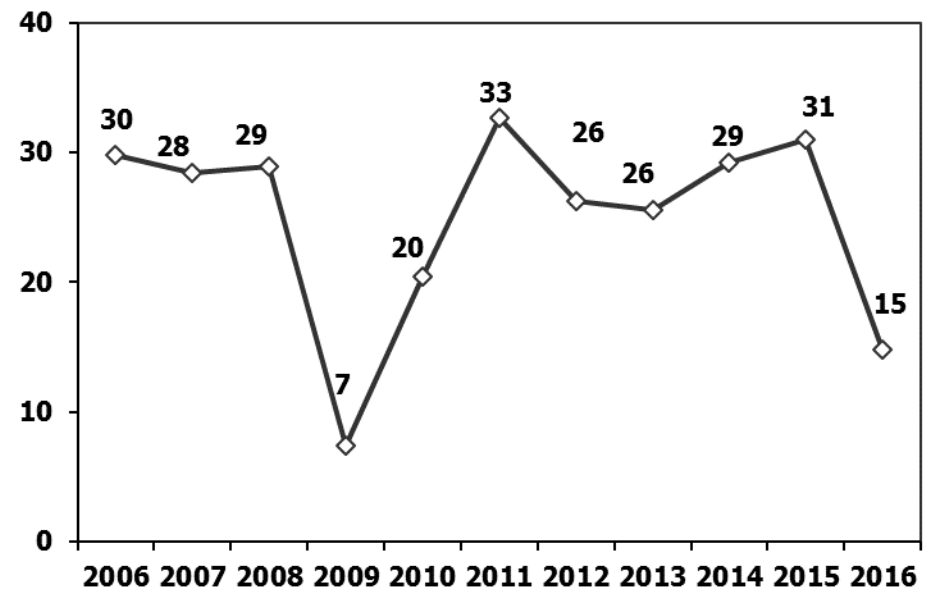
Ticari Araç Üretimi (x1000) (Ocak-Aralık)

Commercial Vehicle Production (x1000) (January-December)



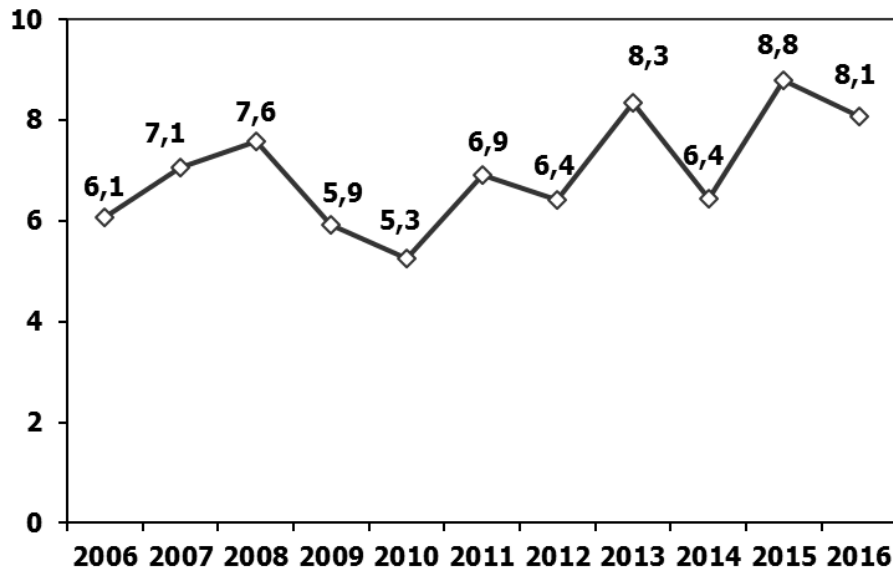
(AYA >12 Ton) Büyük Kamyon Üretimi (x1000) (Ocak-Aralık)

(GVW >12 Ton) Heavy Truck Production (x1000) (January-December)



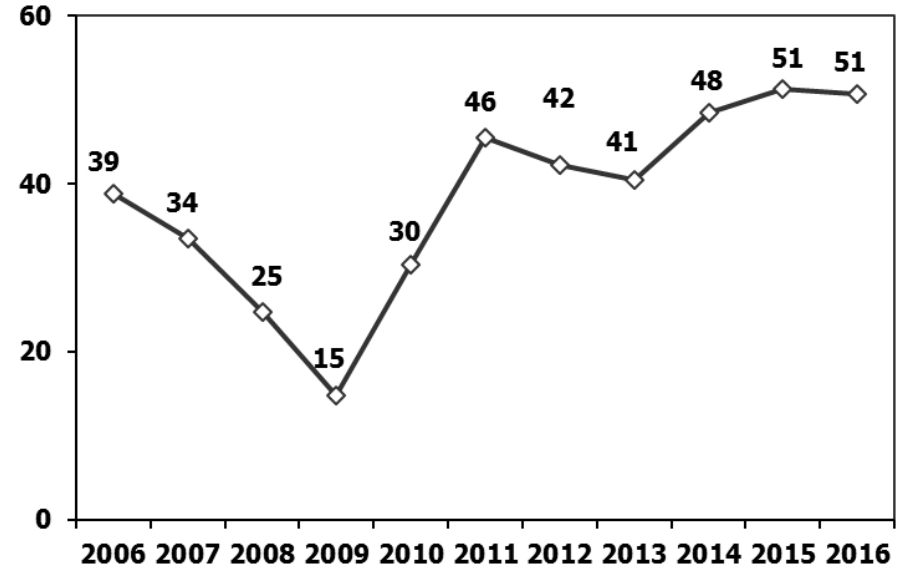
Otobüs Üretimi (x1000) (Ocak-Aralık)

Bus Production (x1000) (January-December)



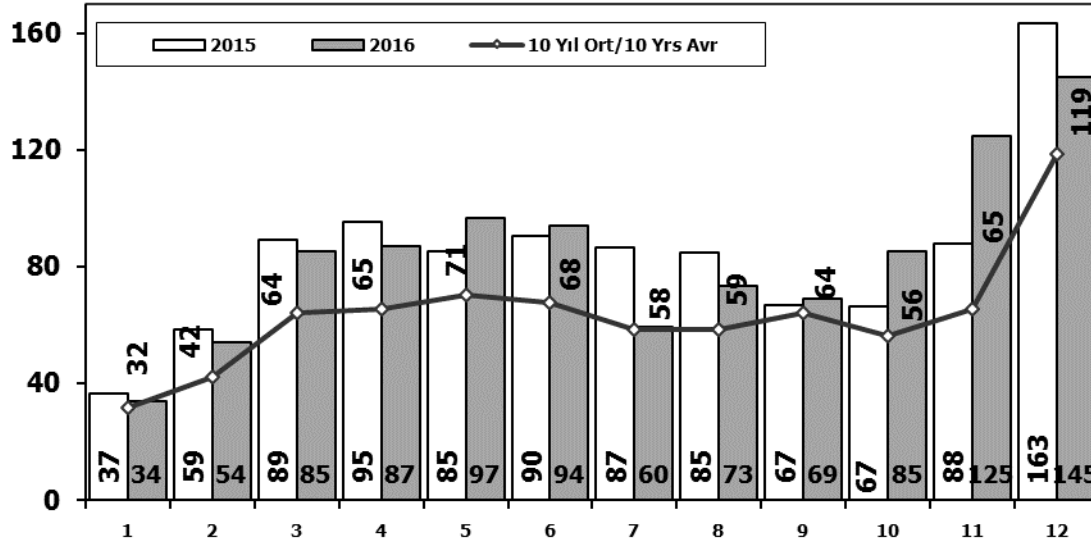
Traktör Üretimi (x1000) (Ocak-Aralık)

F. Tractor Production (x1000) (January-December)



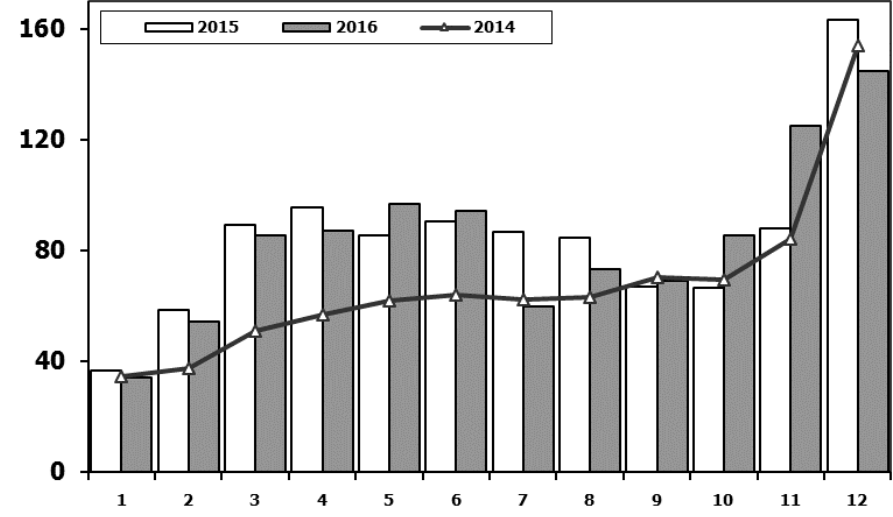
Toplam Pazarın Analizi (x1000)

Total Market Analysis (x1000)



Toplam Pazar (x1000)

Total Market (x1000)

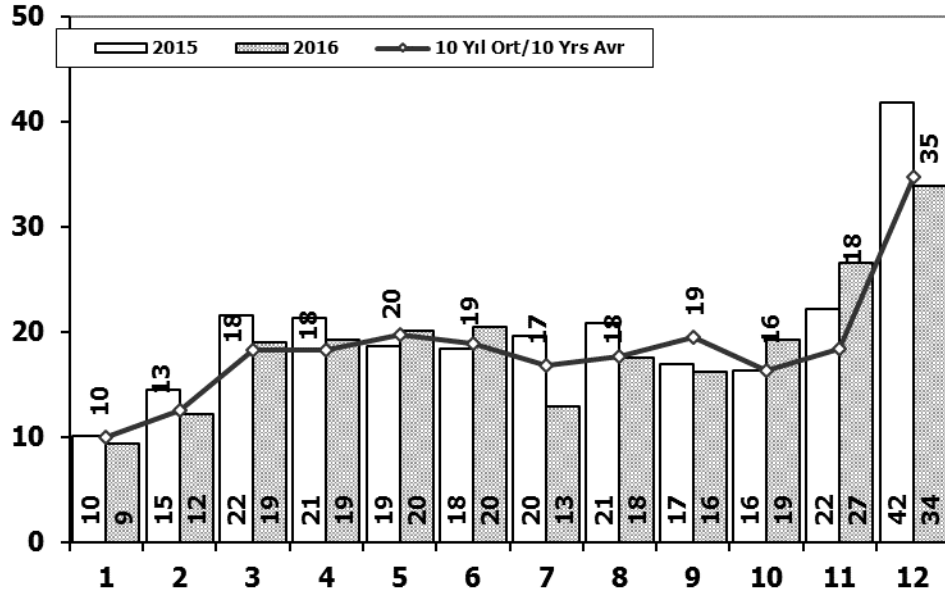


Aylar / Months	10 Yil Ort. 10 Yrs Avr. (x1000)	2016 (x1000)	%
1	31,7	33,7	6,4
2	42,3	54,2	28,3
3	64,3	85,2	32,6
4	65,4	87,0	33,0
5	70,5	96,6	37,0
6	67,9	94,2	38,8
7	58,3	59,5	2,1
8	58,7	73,3	24,8
9	64,1	69,1	7,7
10	56,1	85,3	51,9
11	65,5	124,8	90,6
12	118,8	144,9	22,0
Total	763,6	1.007,9	32,0

	1	2	3	4	5	6	7	8	9	10	11	12	Total
2006	29.969	44.646	65.090	68.853	83.289	58.203	40.037	47.374	49.629	39.805	55.898	82.722	665.515
2007	24.950	31.702	45.488	45.633	51.255	51.661	50.117	54.171	50.078	56.058	67.017	106.076	634.206
2008	33.792	38.121	56.814	50.967	51.627	49.393	44.692	46.592	46.829	35.147	28.152	44.418	526.544
2009	20.631	22.846	56.531	54.426	64.887	63.102	30.246	37.092	83.403	22.117	29.202	91.386	575.869
2010	21.050	32.313	53.828	57.079	61.628	63.390	63.718	64.645	66.601	76.780	77.406	154.734	793.172
2011	47.658	62.348	83.333	82.071	85.093	85.863	65.364	61.378	63.643	72.640	67.195	134.281	910.867
2012	31.219	43.827	68.957	66.014	74.820	74.781	65.122	60.848	73.197	62.677	75.045	121.113	817.620
2013	37.140	50.931	72.688	77.015	85.421	77.771	74.726	67.383	71.037	60.399	83.017	135.596	893.124
2014	34.225	37.308	50.964	56.766	61.909	63.952	62.206	62.839	70.180	69.259	83.937	153.941	807.486
2015	36.576	58.533	89.121	95.431	85.145	90.463	86.625	84.683	66.622	66.520	88.043	163.432	1.011.194
2016	33.740	54.223	85.214	87.041	96.576	94.203	59.505	73.269	69.068	85.251	124.839	144.928	1.007.857

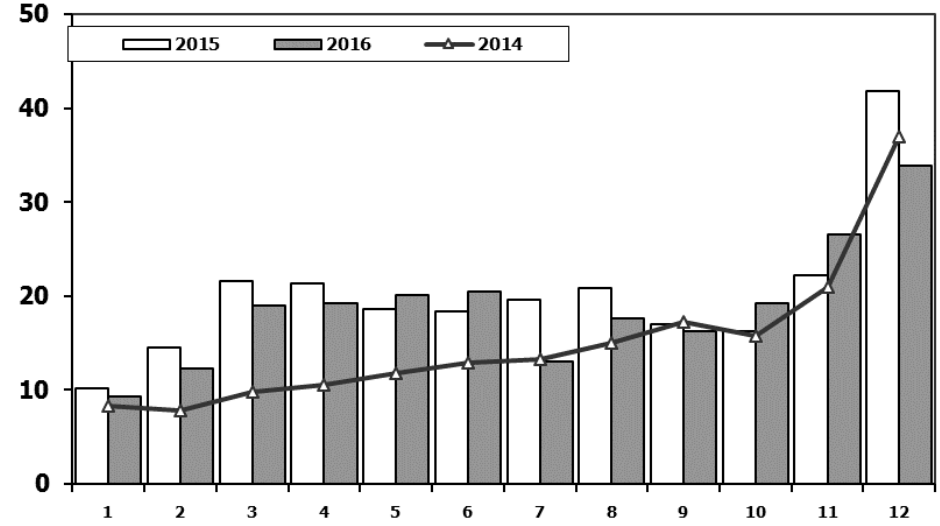
Hafif Ticari Araç Pazarının Analizi (x1000)

LCV Market Analysis (x1000)



Hafif Ticari Araç Pazarı (x1000)

LCV Total Market (x1000)

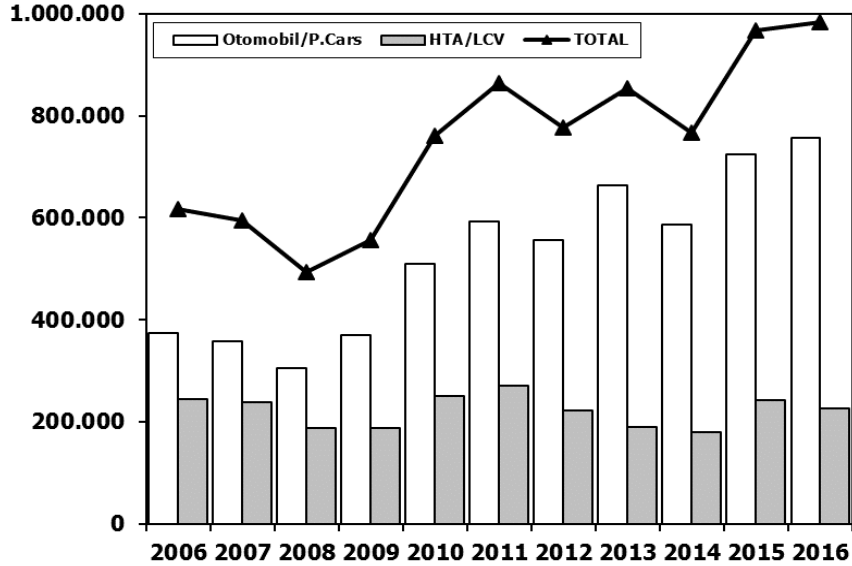


Aylar / Months	10 Yıl Ort. 10 Yrs Avr. (x1000)	2016 (x1000)	%
1	10,0	9,4	-6,3
2	12,5	12,2	-2,5
3	18,3	19,0	3,8
4	18,3	19,3	5,3
5	19,8	20,1	1,5
6	18,9	20,4	8,4
7	16,9	13,0	-23,1
8	17,7	17,6	-0,6
9	19,5	16,3	-16,5
10	16,3	19,3	18,3
11	18,5	26,5	43,7
12	34,7	33,9	-2,4
Total	221,2	226,8	2,5

	1	2	3	4	5	6	7	8	9	10	11	12	Total
2006	11.411	16.009	23.056	23.861	29.708	21.373	14.598	18.894	18.592	15.305	21.390	30.436	244.633
2007	9.931	11.972	17.554	17.162	18.871	18.548	19.244	22.089	18.919	20.156	23.670	39.181	237.297
2008	12.939	14.055	19.502	17.388	17.121	17.600	16.626	17.568	16.879	13.096	9.052	16.199	188.025
2009	6.433	7.250	14.489	16.438	19.003	20.048	12.208	13.072	29.235	7.205	10.181	31.745	187.307
2010	7.501	10.521	17.811	18.397	18.910	18.810	19.946	19.542	21.337	25.545	23.901	48.908	251.129
2011	15.024	19.659	24.380	23.860	24.344	24.859	19.526	19.531	20.165	21.913	18.706	38.953	270.920
2012	8.468	12.135	17.614	17.304	20.403	20.218	17.773	16.912	20.269	16.498	19.413	34.474	221.481
2013	9.688	11.493	16.989	16.576	19.085	15.806	15.884	13.432	15.038	11.029	15.184	28.519	188.723
2014	8.302	7.854	9.769	10.536	11.742	12.885	13.305	15.068	17.269	15.759	20.926	36.935	180.350
2015	10.117	14.514	21.626	21.391	18.664	18.392	19.618	20.824	16.937	16.301	22.204	41.833	242.421
2016	9.355	12.237	18.973	19.269	20.072	20.429	12.967	17.579	16.253	19.254	26.526	33.868	226.782

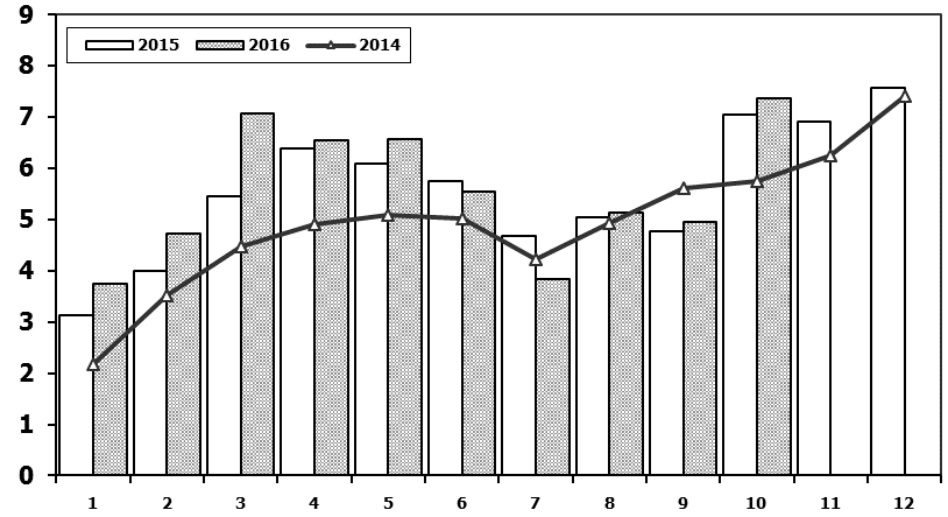
Hafif Araç Pazarı (AYA < 3.5 Ton)

Light Vehicle Market (GVW < 3.5 Ton)



Traktör Pazarı (x1000)

F.Tractor Market (x1000)



	2006	2007	2008	2009	2010	2011	2012	2013	2014	2015	2016
Otomobil/P.Cars	373.219	357.465	305.998	369.819	509.784	593.519	556.280	664.655	587.331	725.596	756.938
HTA/LCV	244.633	237.297	188.025	187.307	251.129	270.920	221.481	188.723	180.350	242.421	226.782
TOTAL	617.852	594.762	494.023	557.126	760.913	864.439	777.761	853.378	767.681	968.017	983.720
HTA/LCV (%)	40	40	38	34	33	31	28	22	23	25	23

	1	2	3	4	5	6	7	8	9	10	11	12	10 Ay/Mo	Total
2006	4.018	2.139	3.201	3.599	5.529	3.401	2.450	2.608	2.820	2.872	3.697	3.373	32.637	39.707
2007	2.816	2.244	3.053	2.657	3.188	3.141	2.497	2.381	3.025	2.755	3.549	3.097	27.757	34.403
2008	2.770	1.855	3.395	3.081	2.769	2.400	2.232	2.485	1.856	1.773	1.305	1.101	24.616	27.022
2009	717	572	688	1.070	1.297	1.256	1.054	1.183	1.117	1.356	1.304	2.144	10.310	13.758
2010	1.111	1.991	2.330	3.039	2.567	2.638	1.965	3.019	2.806	4.424	3.978	6.168	25.890	36.036
2011	2.975	5.242	5.927	5.358	6.016	6.335	4.534	4.051	4.140	5.828	4.943	4.992	50.406	60.341
2012	2.362	1.983	4.348	6.579	6.273	4.569	3.837	3.158	3.618	4.027	4.807	4.757	40.754	50.318
2013	2.161	2.432	4.005	4.585	5.616	3.136	4.574	3.408	4.935	4.762	5.781	6.891	39.614	52.286
2014	2.169	3.512	4.476	4.905	5.094	5.028	4.233	4.920	5.619	5.743	6.250	7.409	45.699	59.358
2015	3.124	3.984	5.460	6.383	6.078	5.748	4.677	5.044	4.765	7.049	6.898	7.564	52.312	66.774
2016	3.739	4.731	7.067	6.546	6.575	5.543	3.833	5.134	4.945	7.372			55.485	55.485

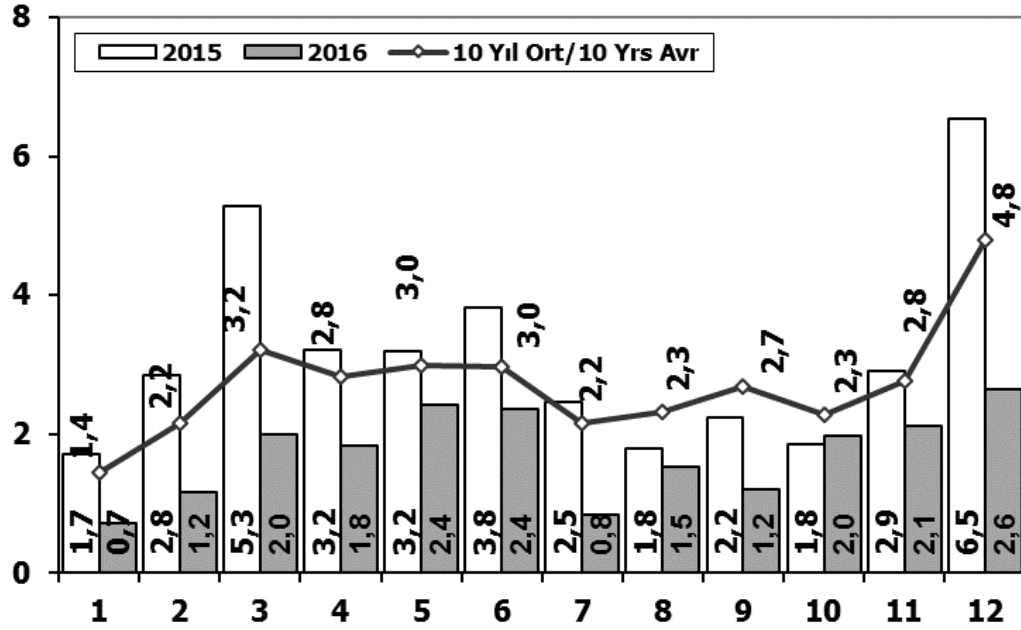
Kaynak: TÜİK trafik kayıtları.

Rakamlar, son iki model yılına ait traktör tescillerinden oluşmaktadır.

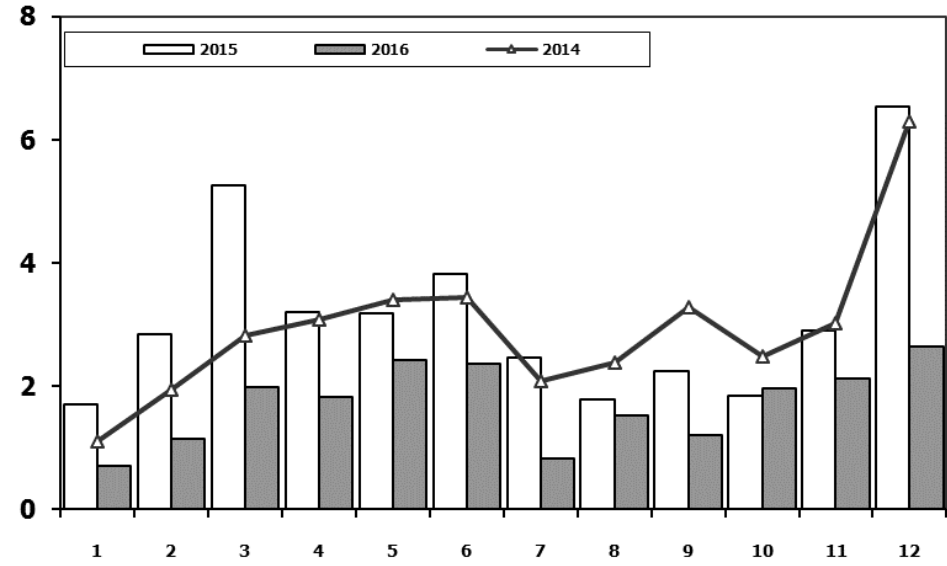
Source: Turkish Statistical Institute – Traffic registrations

Data represents the last two model year's farm tractors registration figures

Kamyon Pazarının Analizi (x1000) AYA > 5 Ton Truck Market Analysis (x1000) GVW > 5 Ton



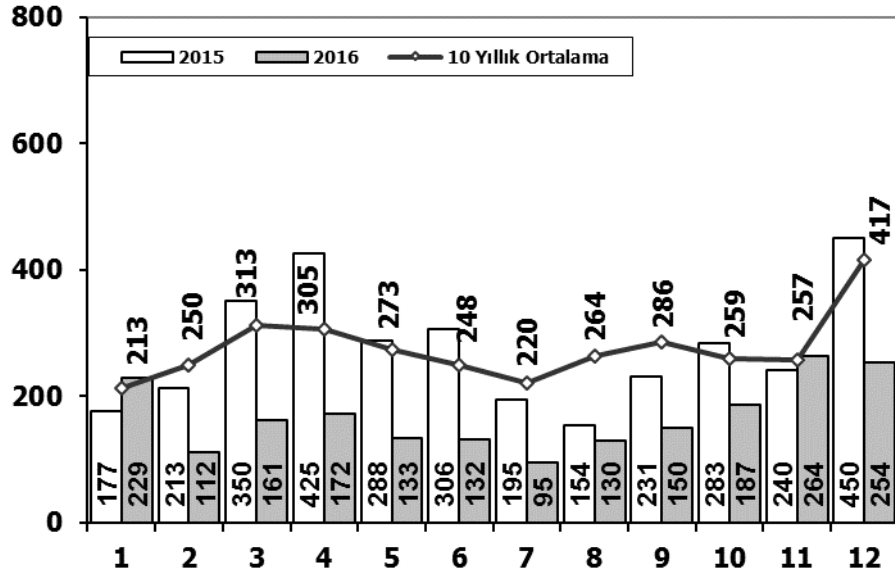
Kamyon Pazarı (x1000) AYA > 5 Ton Truck Market (x1000) GVW > 5 Ton



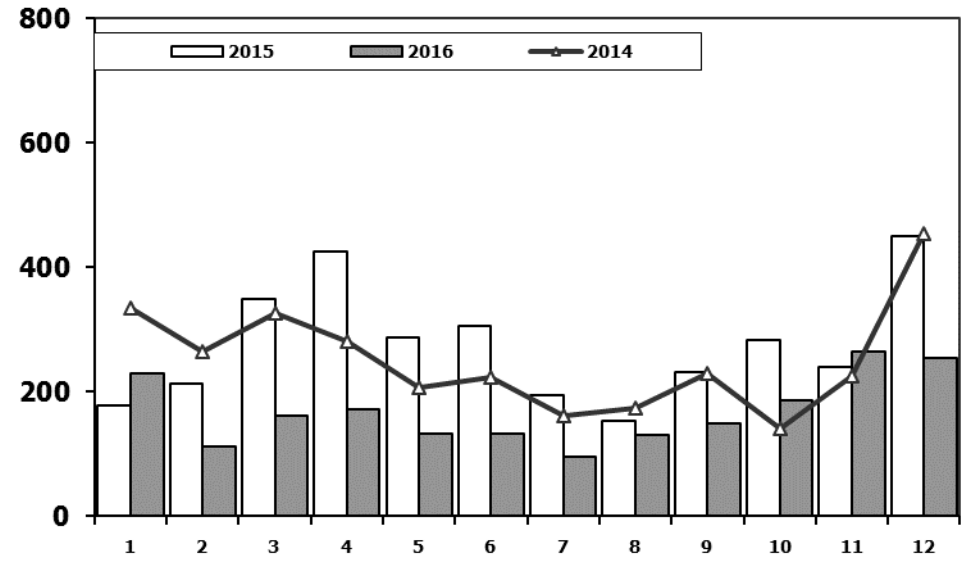
Aylar / Months	10 Yil Ort. / 10 Yrs Avr. (x1000)	2016 (x1000)	%
1	1,4	0,7	-50,5
2	2,2	1,2	-46,5
3	3,2	2,0	-38,4
4	2,8	1,8	-35,2
5	3,0	2,4	-19,2
6	3,0	2,4	-20,4
7	2,2	0,8	-61,5
8	2,3	1,5	-33,8
9	2,7	1,2	-55,1
10	2,3	2,0	-13,6
11	2,8	2,1	-23,2
12	4,8	2,6	-45,0
Total	32,6	20,8	-36,3

	1	2	3	4	5	6	7	8	9	10	11	12	Total
2006	1.767	3.310	4.467	4.180	4.449	3.398	2.472	3.142	3.052	2.926	3.550	5.358	42.071
2007	1.554	2.055	3.065	2.940	2.865	2.613	2.372	3.145	2.988	2.886	3.258	4.444	34.185
2008	1.797	2.309	2.621	2.578	2.459	2.526	2.067	2.377	2.390	1.790	1.512	1.834	26.260
2009	771	759	1.034	1.342	1.355	1.651	1.156	1.205	1.780	866	981	2.015	14.915
2010	777	968	1.772	1.807	1.966	2.205	2.093	2.446	2.444	3.071	3.136	5.677	28.362
2011	2.552	3.292	4.418	3.754	3.803	3.749	1.996	2.478	3.081	2.774	3.108	5.787	40.792
2012	1.375	2.159	3.595	2.697	3.321	3.250	2.450	2.277	2.991	2.244	3.006	5.000	34.365
2013	1.077	1.931	3.127	2.720	3.145	2.951	2.411	1.845	2.554	1.801	3.173	5.025	31.760
2014	1.117	1.949	2.818	3.092	3.405	3.438	2.083	2.390	3.281	2.494	3.028	6.313	35.408
2015	1.705	2.841	5.270	3.208	3.190	3.824	2.463	1.798	2.244	1.848	2.902	6.540	37.833
2016	718	1.154	1.984	1.835	2.420	2.358	830	1.529	1.204	1.962	2.123	2.640	20.757

Midibüs Pazarının Analizi (7-9 mt / 25-35 Kişilik) Midibus Market Analysis (7-9 mt / 25-35 Passengers)



Midibüs Pazarı (7-9 mt / 25-35 Kişilik Midibüs) Midibus Market (7-9 mt / 25-35 Passengers)

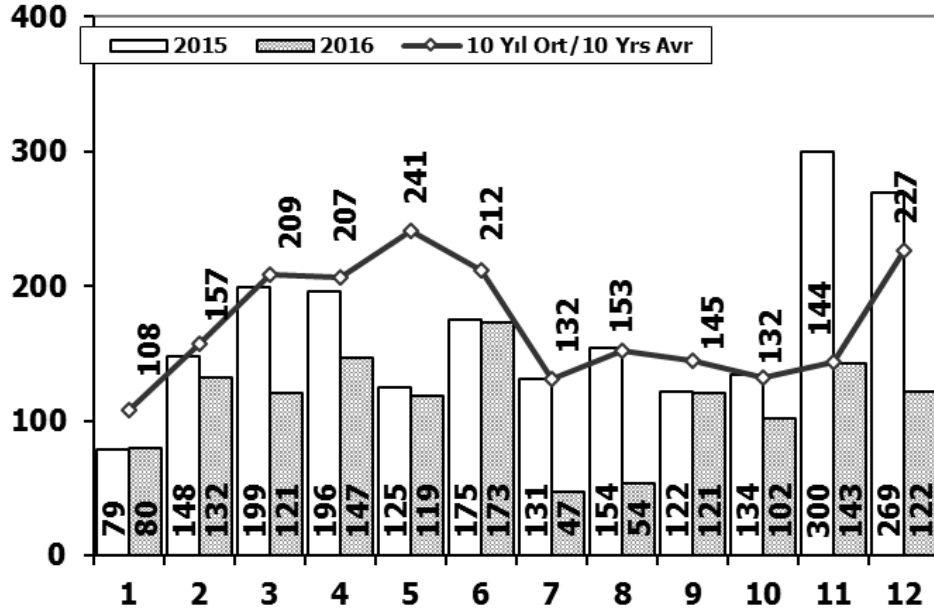


Aylar / Months	10 Yıl Ort. 10 Yrs Avr.	2016	%
1	213	229	7
2	250	112	-55
3	313	161	-49
4	305	172	-44
5	273	133	-51
6	248	132	-47
7	220	95	-57
8	264	130	-51
9	286	150	-47
10	259	187	-28
11	257	264	3
12	417	254	-39
Total	3.305	2.019	-39

	1	2	3	4	5	6	7	8	9	10	11	12	Total
2006	207	297	406	388	381	266	230	353	322	253	305	401	3.809
2007	207	272	404	238	302	283	164	365	399	279	283	465	3.661
2008	391	476	436	512	419	331	368	380	341	352	246	270	4.522
2009	154	124	160	220	174	198	160	175	168	143	206	323	2.205
2010	155	131	185	167	140	138	129	246	236	206	202	437	2.372
2011	138	195	294	316	280	258	211	305	301	276	260	270	3.104
2012	179	257	277	229	257	239	216	249	325	269	189	398	3.084
2013	191	268	289	276	283	241	367	235	305	392	415	697	3.959
2014	335	265	326	280	206	223	161	174	229	140	226	454	3.019
2015	177	213	350	425	288	306	195	154	231	283	240	450	3.312
2016	229	112	161	172	133	132	95	130	150	187	264	254	2.019

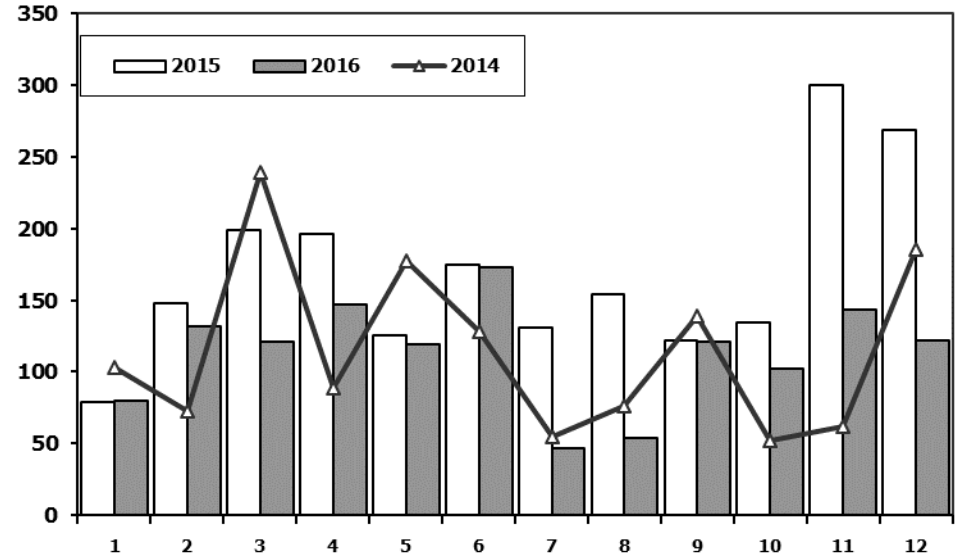
Otobüs Pazarının Analizi

Bus Market Analysis



Otobüs Pazarı

Bus Market

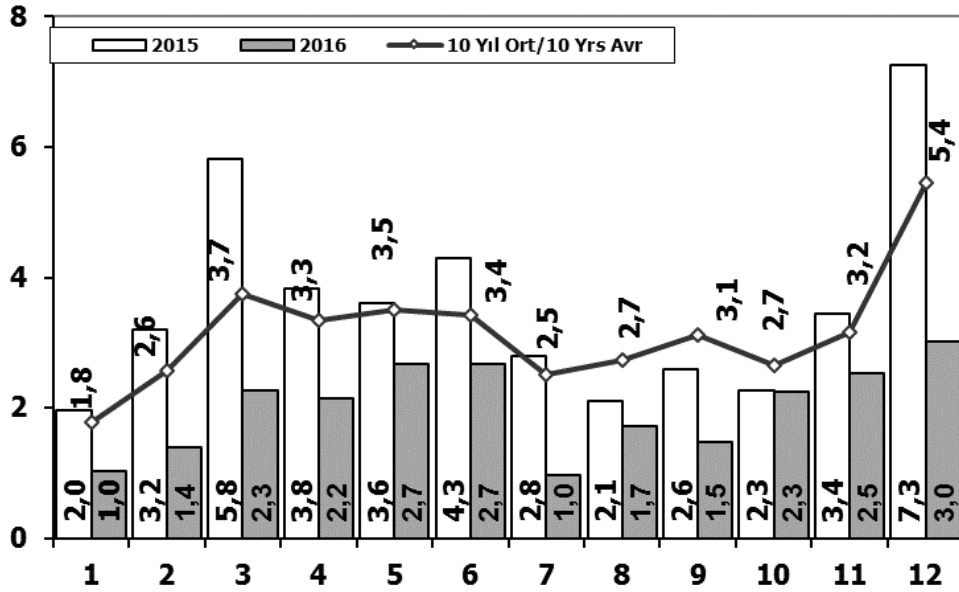


Aylar / Months	10 Yil Ort. / 10 Yrs Avr.	2016	%
1	108	80	-26
2	157	132	-16
3	209	121	-42
4	207	147	-29
5	241	119	-51
6	212	173	-18
7	132	47	-64
8	153	54	-65
9	145	121	-16
10	132	102	-23
11	144	143	-1
12	227	122	-46
Total	2.065	1.361	-34

	1	2	3	4	5	6	7	8	9	10	11	12	Total
2006	78	101	165	247	230	184	84	112	146	84	176	176	1.783
2007	72	191	129	89	150	91	91	103	110	168	163	241	1.598
2008	77	85	108	176	151	212	101	165	166	121	141	236	1.739
2009	100	221	226	224	167	186	85	103	58	75	53	125	1.623
2010	23	42	102	159	145	151	151	189	107	99	106	251	1.525
2011	76	198	218	306	364	283	113	189	132	169	170	314	2.532
2012	120	87	201	139	379	225	152	174	252	226	140	315	2.410
2013	349	425	498	444	525	483	352	260	215	192	128	156	4.027
2014	103	73	239	89	177	128	55	76	139	52	62	185	1.378
2015	79	148	199	196	125	175	131	154	122	134	300	269	2.032
2016	80	132	121	147	119	173	47	54	121	102	143	122	1.361

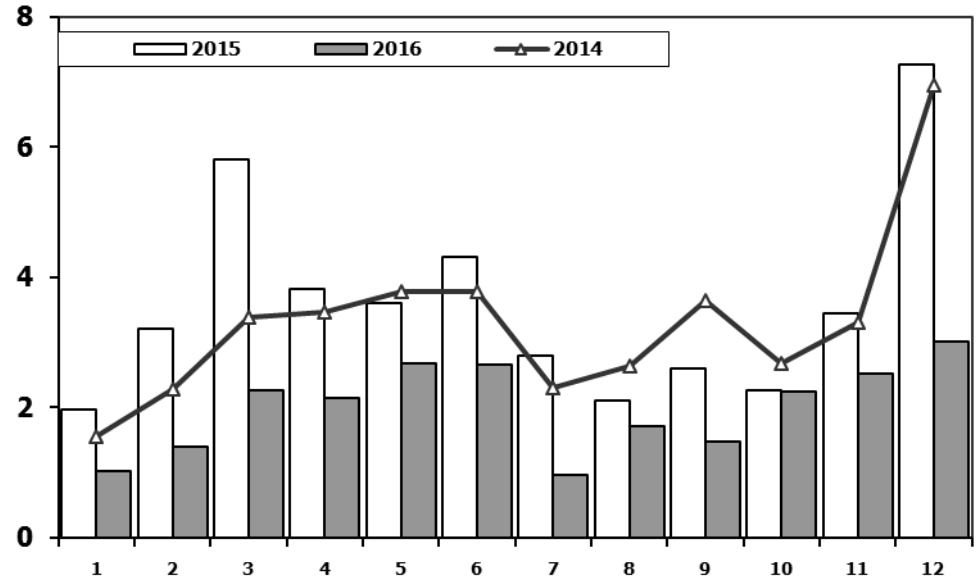
Ağır Ticari Araç Pazarının Analizi (x1000)

HCV Market Analysis (x1000)



Ağır Ticari Araç Pazarı (x1000)

HCV Market (x1000)

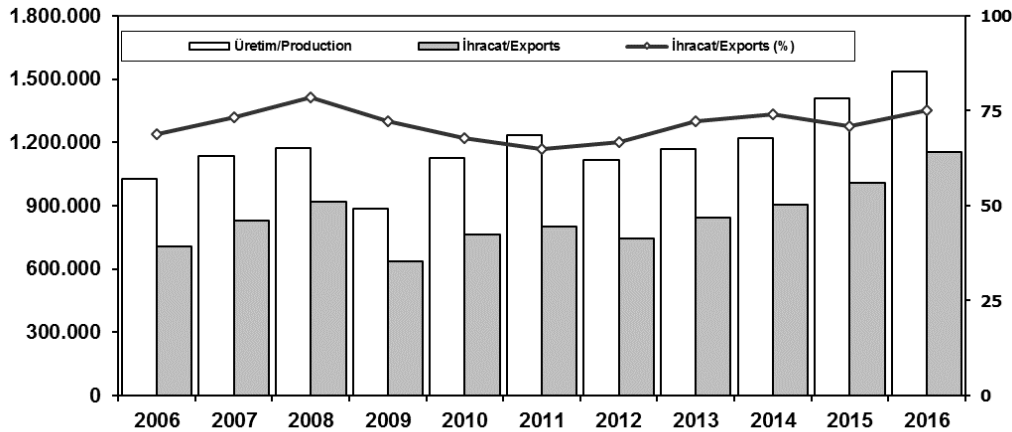


Aylar / Months	10 Yil Ort. 10 Yrs Avr. (x1000)	2016 (x1000)	%
1	1,8	1,0	-42,0
2	2,6	1,4	-45,5
3	3,7	2,3	-39,4
4	3,3	2,2	-35,6
5	3,5	2,7	-23,9
6	3,4	2,7	-22,1
7	2,5	1,0	-61,2
8	2,7	1,7	-37,2
9	3,1	1,5	-52,6
10	2,7	2,3	-15,4
11	3,2	2,5	-20,1
12	5,4	3,0	-44,6
Total	38,0	24,1	-36,4

	1	2	3	4	5	6	7	8	9	10	11	12	Total
2006	2.052	3.708	5.038	4.815	5.060	3.848	2.786	3.607	3.520	3.263	4.031	5.935	47.663
2007	1.833	2.518	3.598	3.267	3.317	2.987	2.627	3.613	3.497	3.333	3.704	5.150	39.444
2008	2.265	2.870	3.165	3.266	3.029	3.069	2.536	2.922	2.897	2.263	1.899	2.340	32.521
2009	1.025	1.104	1.420	1.786	1.696	2.035	1.401	1.483	2.006	1.084	1.240	2.463	18.743
2010	955	1.141	2.059	2.133	2.251	2.494	2.373	2.881	2.787	3.376	3.444	6.365	32.259
2011	2.766	3.685	4.930	4.376	4.447	4.290	2.320	2.972	3.514	3.219	3.538	6.371	46.428
2012	1.674	2.503	4.073	3.065	3.957	3.714	2.818	2.700	3.568	2.739	3.335	5.713	39.859
2013	1.617	2.624	3.914	3.440	3.953	3.675	3.130	2.340	3.074	2.385	3.716	5.878	39.746
2014	1.555	2.287	3.383	3.461	3.788	3.789	2.299	2.640	3.649	2.686	3.316	6.952	39.805
2015	1.961	3.202	5.819	3.829	3.603	4.305	2.789	2.106	2.597	2.265	3.442	7.259	43.177
2016	1.027	1.398	2.266	2.154	2.672	2.663	972	1.713	1.475	2.251	2.530	3.016	24.137

İhracat/Üretim (2006-2016) (Traktör dahil)

Exports/Production (2006-2016) (Including F.Tractor)



	2006	2007	2008	2009	2010	2011	2012	2013	2014	2015	2016
Üretim/Production	1.026.427	1.132.951	1.171.917	884.466	1.124.982	1.234.637	1.115.233	1.166.043	1.218.848	1.410.034	1.536.673
İhracat/Exports	706.402	829.879	920.763	637.855	763.670	801.112	745.354	843.467	902.194	1.007.267	1.155.033
İhracat/Exports (%)	69	73	79	72	68	65	67	72	74	71	75

Taşıt Araçları İhracatı (2014-2016)

Motor Vehicle Exports (2014-2016)

SEKTÖR/SECTOR	2014	2015	2016	2016/2015 (%)
OTOMOBİL/ P.Cars	581.993	604.683	745.709	23
TİCARİ ARAÇLAR / CV	303.187	387.652	395.673	2
* Kamyonet/Pick-Up	269.995	341.834	347.949	2
* Minibüs/Minibus	26.458	38.255	5.521	-86
* Kamyon/Truck	1.281	1.408	915	-35
* Midibüs/Midibus	824	447	34.790	7683
* Otobüs/Bus	4.629	5.708	6.498	14
TAŞIT ARAÇLARI /MV TOTAL	885.180	992.335	1.141.382	15
TRAKTÖR/F. TRACTOR	17.014	14.932	13.651	-9
TOTAL	902.194	1.007.267	1.155.033	15

Otomotiv Ana ve Yan Sanayii İhracatı (ABD \$)

CBU and CKD Exports - \$

Sektör / Sector	2012	2013	2014	2015		2016	2016/2015 (%)
				Ocak-Aralık / January-December			
Toplam Yan Sanayi/Total Component Industry	8.215.636.677	9.065.017.539	9.504.013.791	8.641.977.425	8.947.915.672	4%	
İç ve Dış Lastik / Tyres	1.199.566.307,01	1.130.005.891,78	1.126.709.610,14	960.550.807	978.284.060	2%	
Emniyet Camı / Safety Glasses	120.615.917,59	135.230.309,67	143.208.298,99	124.564.841	119.569.736	-4%	
Motor (Engine)	272.085.582,31	319.294.885,46	171.893.752,32	221.897.271	370.561.589	67%	
Akümülatör / Batteries	249.831.846,25	306.451.449,47	289.101.198,21	220.462.827	224.590.660	2%	
Diğer Aksam ve Parça / Spare Parts&Components	6.373.537.023,45	7.174.035.002,35	7.773.100.931,83	7.114.501.679	7.254.909.627	2%	
Toplam Ana Sanayi/Total Vehicle Industry	11.100.115.134	12.491.591.365	13.259.499.977	12.977.346.859	15.302.074.705	18%	
Otobüs / Bus	855.424.303,62	937.790.962,87	985.983.007,01	1.023.556.746	1.190.475.986	16%	
Midibüs-Minibüs / Minibus- Minibus	161.806.275,12	147.769.644,17	97.685.509,12	130.195.838	238.911.957	84%	
Otomobil (P. Cars)	6.068.045.119,19	6.855.475.589,83	7.258.361.005,24	6.881.867.274	8.336.946.503	21%	
Kamyon-Kamyonet/HCV-LCV	3.433.310.998,81	3.918.798.755,31	4.201.760.813,55	4.264.018.829	4.616.562.139	8%	
Römork ve Yarı Römork/Trailer-Semi Trailer	195.093.508,21	218.385.731,69	252.354.014,20	252.397.167	265.323.711	5%	
Çekici/Truck-Tractor	71.336.634,88	77.907.406,95	38.396.524,81	48.108.959	316.355.575	558%	
Tarım Traktörü/Farm Tractor	315.098.293,75	335.463.274,61	424.959.103,39	377.202.046	337.498.834	-11%	
Toplam/Total	19.315.751.810	21.556.608.904	22.763.513.769	21.619.324.284	24.249.990.377	12%	

Kaynak: Uludağ İhracatçı Birlikleri . ÜİB tarafından OSD için özel olarak analiz edilen Otomotiv İhracatı kapsamında; ÜİB Türkiye Genel Otomotiv Endüstrisi sınıflandırmasına kıyasla "Römork ve Yarı Römork", "Tarım Traktörü" verileri dahil edilmekte; "Kullanılmış Araçlar", "İki Tekerlekli Taşıtlar", "Demiryolu Taşıtları" hariç tutulmaktadır.

Source: Uludağ Exporters Association - Special Analyze for OSD

Compared to Turkish General Automotive Industry classification, this special analyze includes; farms tractors, trailers and semi-trailers, does not include; used vehicles, two-wheeled vehicles and railway vehicles.

Firma Bazında İhracat (Adet)
Export Of Member Companies (Unit)

FİRMALAR Companies	2014	2015	2016
TOFAŞ	142.234	173.743	279.444
OYAK RENAULT	257.992	270.299	270.088
FORD OTOSAN	187.921	252.571	256.706
HYUNDAI ASSAN	179.793	201.276	207.234
TOYOTA	109.517	81.962	109.184
TÜRK TRAKTÖR	15.866	14.122	12.625
M. BENZ TÜRK	3.438	4.252	8.307
KARSAN	37	3.067	3.629
HONDA TÜRKİYE	1.560	2.220	2.914
MAN TÜRKİYE	937	1.493	1.717
HATTAT TARIM	1.148	810	1.026
OTOKAR	580	720	833
A.I.O.S.	748	291	673
TEMSA GLOBAL	423	441	653
GENEL TOPLAM	902.194	1.007.267	1.155.033

Kaynak: OSD

Sektör Bazında İhracat (1000 \$)
Exports on Sectorial Basis

SEKTÖRLER (1.000 \$)	ARALIK				OCAK - ARALIK			
	2015	2016	Değişim ('16/'15)	Pay(16)	2015	2016	Değişim ('16/'15)	Pay(16)
Otomotiv Endüstrisi	1.847.538	2.347.551	27,1	19,0	21.151.914	23.889.626	12,9	16,8
Hazırgiyim ve Konfeksiyon	1.388.521	1.339.353	-3,5	10,8	16.954.868	16.965.859	0,1	11,9
Kimyevi Maddeler ve Mamulleri	1.261.717	1.282.128	1,6	10,4	15.398.176	13.936.294	-9,5	9,8
Elektrik Elektronik ve Hizmet	934.564	951.704	1,8	7,7	10.471.936	9.987.737	-4,6	7,0
Çelik	759.962	937.693	23,4	7,6	9.879.863	9.089.330	-8,0	6,4
Tekstil ve Hammaddeleri	627.277	646.938	3,1	5,2	7.947.283	7.871.654	-1,0	5,5
Hububat, Bakliyat, Yağlı Tohumlar ve Mamulleri	541.773	616.713	13,8	5,0	6.126.984	6.364.111	3,9	4,5
Demir ve Demir Dışı Metaller	506.304	492.911	-2,6	4,0	6.230.279	5.948.966	-4,5	4,2
Makine ve Aksamları	502.028	493.577	-1,7	4,0	5.523.065	5.303.014	-4,0	3,7
Mobilya, Kağıt ve Orman Ürünleri	348.282	354.899	1,9	2,9	4.074.816	4.102.999	0,7	2,9
TOPLAM	11.498.668	12.345.769	7,4	100,0	143.838.871	142.138.850	-1,2	100,0

Kaynak: TİM

Aralık ayı ihracat verilerine, "İhracatçı Birlikleri Kaydından Muaf İhracat" verisi dahil değildir.

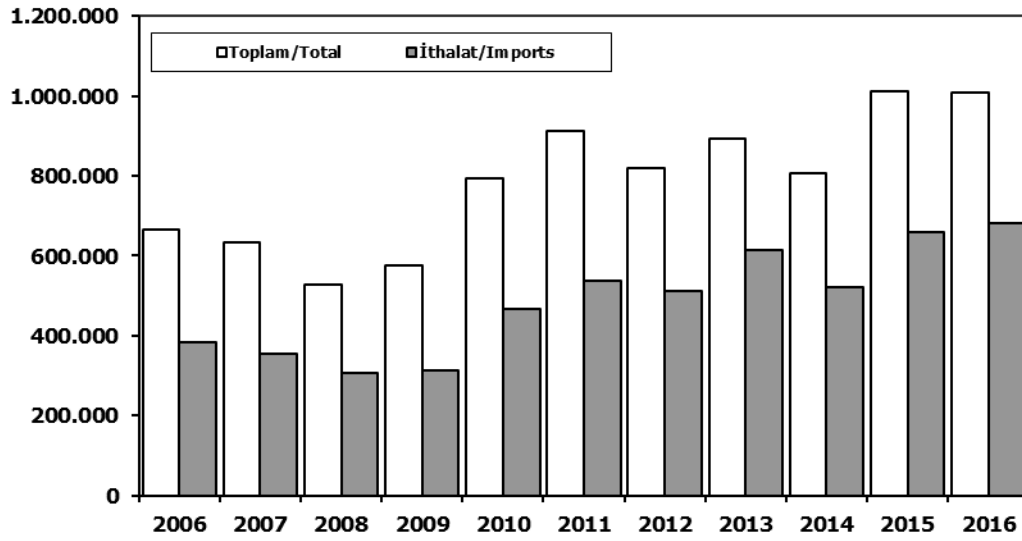
Source: TİM

Exportation data for December does not include "Exempted Exports from the Exporters' Union Registration".

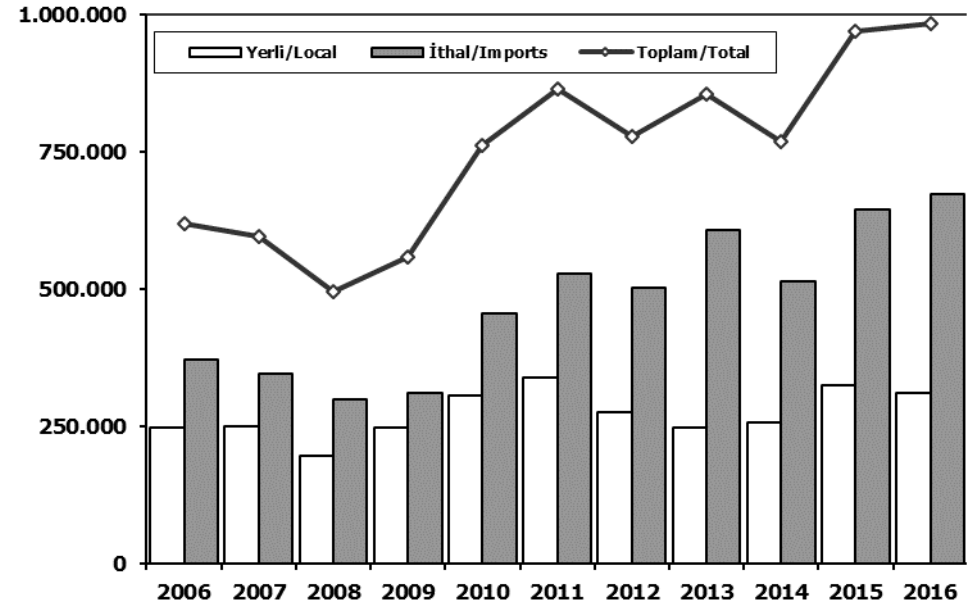
First 3 Sectors:

- 1- Automotive Industry
- 2- Ready Wear and Confection
- 3-Chemical Articles and Products

Toplam Pazar (Otomobil+T.Araç) Total Market (P.Cars+C.V)



Hafif Araçlar Pazarı (2006-2016 Ocak-Aralık) LV Market (2006-2016 January-December)



	2006	2007	2008	2009	2010	2011	2012	2013	2014	2015	2016
Toplam/Total	665.515	634.206	526.544	575.869	793.172	910.867	817.620	893.124	807.486	1.011.194	1.007.857
İthalat/Imports	382.460	355.752	306.087	313.921	465.408	538.532	511.694	615.609	522.842	658.690	681.308
İthalat/Imports (%)	57	56	58	55	59	59	63	69	65	65	68

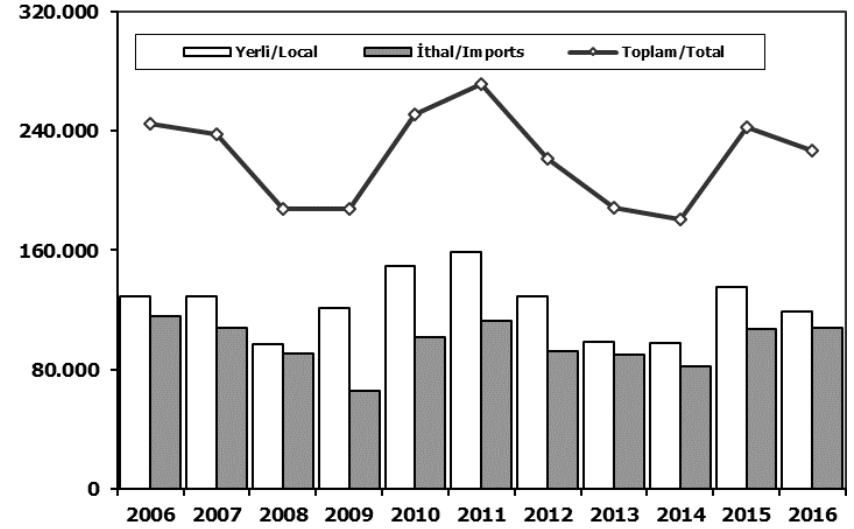
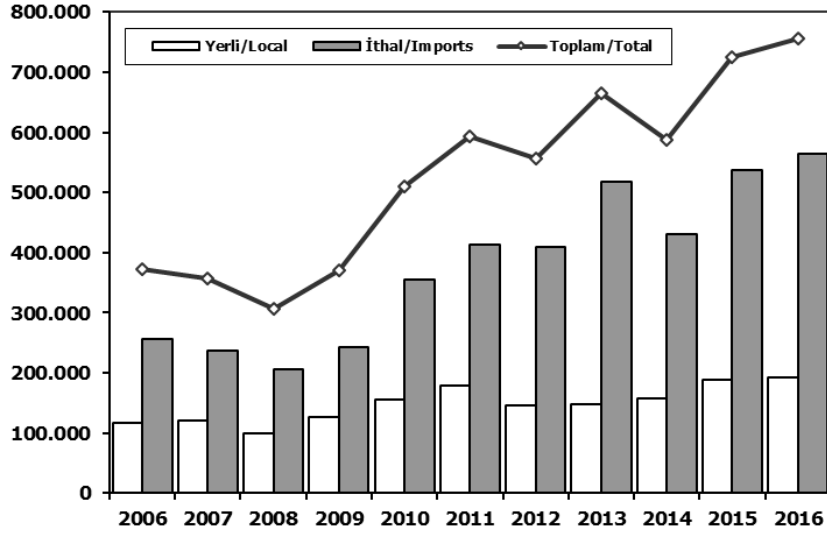
	2006	2007	2008	2009	2010	2011	2012	2013	2014	2015	2016
Yerli/Local	246.800	249.705	196.162	247.694	305.354	338.074	276.003	245.906	255.573	323.080	310.864
İthal/Imports	371.052	345.057	297.861	309.432	455.559	526.365	501.758	607.472	512.108	644.937	672.856
Toplam/Total	617.852	594.762	494.023	557.126	760.913	864.439	777.761	853.378	767.681	968.017	983.720
İthalat/Imports (%)	60	58	60	56	60	61	65	71	67	67	68

Otomobil Pazarı (2006-2016 Ocak-Aralık)

P.Cars Market (2006-2016 January-December)

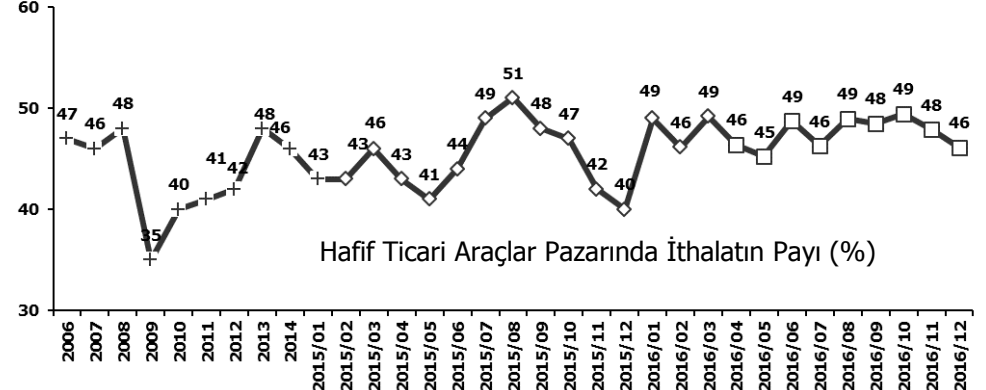
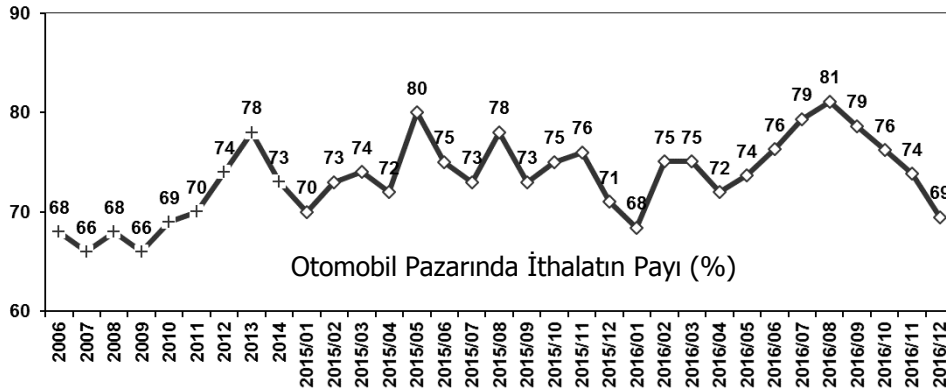
Hafif Ticari Araçlar Pazarı (2006-2016 Ocak-Aralık)

Light Commercial Vehicle Market (2006-2016 January-December)



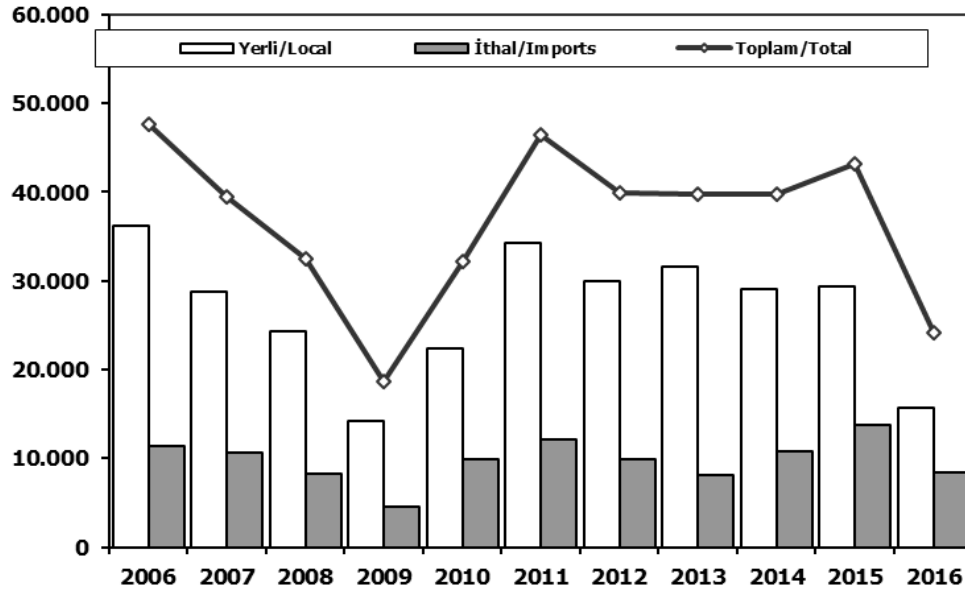
	2006	2007	2008	2009	2010	2011	2012	2013	2014	2015	2016
Yerli/Local	117.725	120.740	99.205	126.277	155.634	179.488	146.604	147.128	157.349	187.881	191.893
İthal/Imports	255.494	236.725	206.793	243.542	354.150	414.031	409.676	517.527	429.982	537.715	565.045
Toplam/Total	373.219	357.465	305.998	369.819	509.784	593.519	556.280	664.655	587.331	725.596	756.938
İthalat/Imports (%)	68	66	68	66	69	70	74	78	73	74	75

	2006	2007	2008	2009	2010	2011	2012	2013	2014	2015	2016
Yerli/Local	129.075	128.965	96.957	121.417	149.720	158.586	129.399	98.778	98.224	135.199	118.971
İthal/Imports	115.558	108.332	91.068	65.890	101.409	112.334	92.082	89.945	82.126	107.222	107.811
Toplam/Total	244.633	237.297	188.025	187.307	251.129	270.920	221.481	188.723	180.350	242.421	226.782
İthalat/Imports (%)	47	46	48	35	40	41	42	48	46	44	48



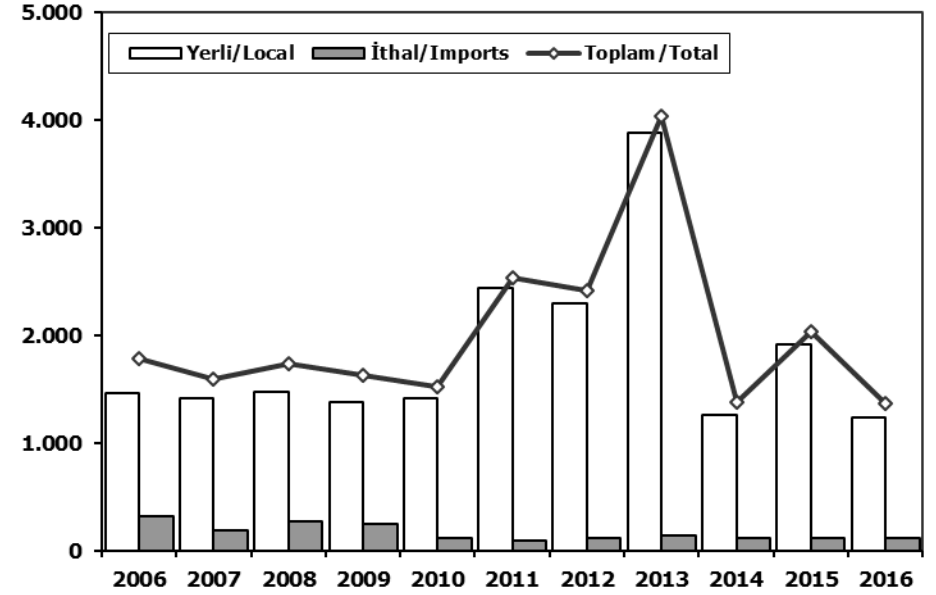
Ağır Ticari Araçlar Pazarı (2006-2016 Ocak-Aralık)

HCV Market (2006-2016 January-December)



Otobüs Pazarı (2006-2016 Ocak-Aralık)

Bus Market (2006-2016 January-December)

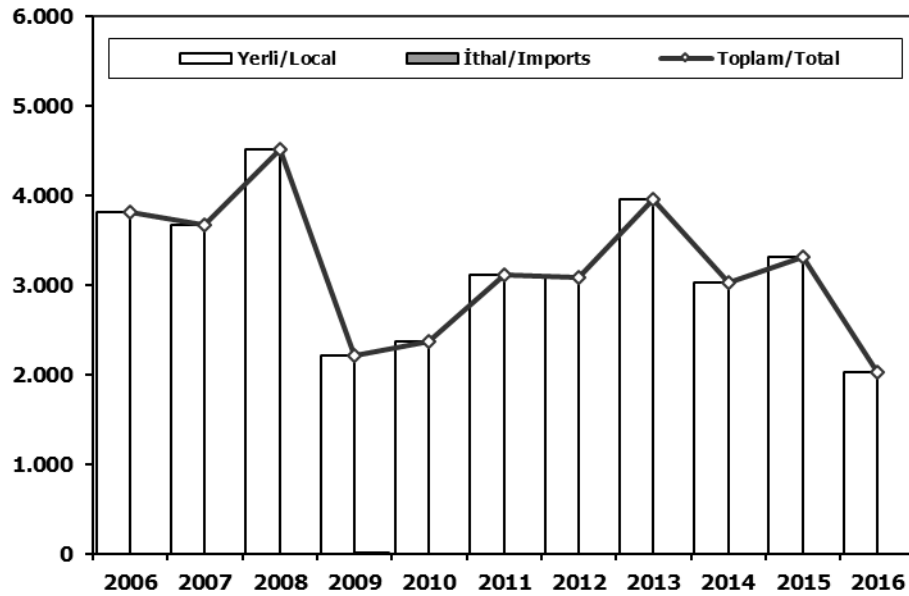


	2006	2007	2008	2009	2010	2011	2012	2013	2014	2015	2016
Yerli/Local	36.255	28.749	24.295	14.254	22.410	34.261	29.923	31.609	29.071	29.424	15.685
İthal/Imports	11.408	10.695	8.226	4.489	9.849	12.167	9.936	8.137	10.734	13.753	8.452
Toplam/Total	47.663	39.444	32.521	18.743	32.259	46.428	39.859	39.746	39.805	43.177	24.137
İthalat/Imports (%)	24	27	25	24	31	26	25	20	27	32	35

	2006	2007	2008	2009	2010	2011	2012	2013	2014	2015	2016
Yerli/Local	1.466	1.413	1.468	1.376	1.409	2.437	2.291	3.882	1.258	1.912	1.241
İthal/Imports	317	185	271	247	116	95	119	145	120	120	120
Toplam/Total	1.783	1.598	1.739	1.623	1.525	2.532	2.410	4.027	1.378	2.032	1.361
İthalat/Imports (%)	18	12	16	15	8	4	5	4	9	6	9

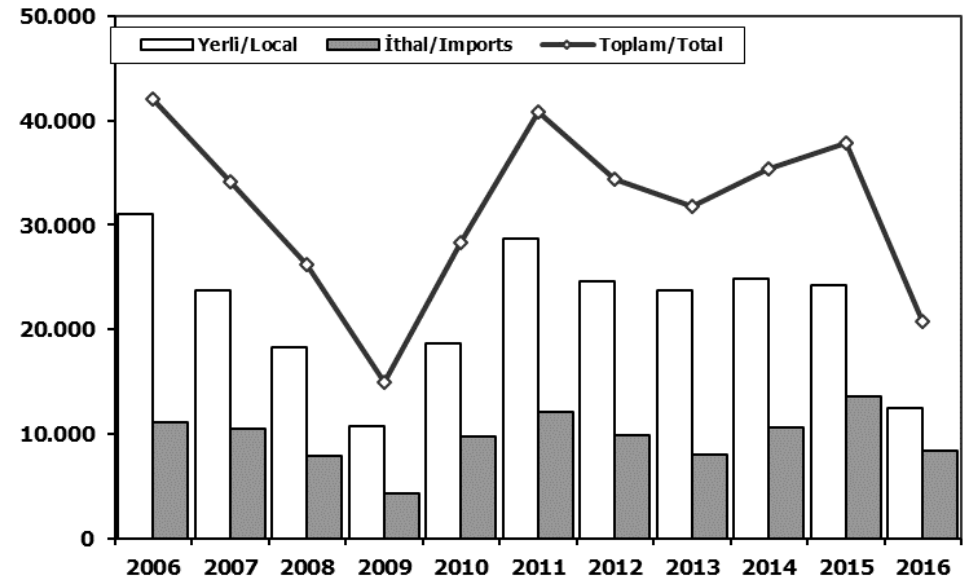
Midibüs Pazarı (2006-2016 Ocak-Aralık) (7-9 mt / 25-35 Kişilik)

Midibus Market (2006-2016 January-December) (7-9 mt / 25-35 Passengers)



Kamyon Pazarı (2006-2016 Ocak-Aralık)

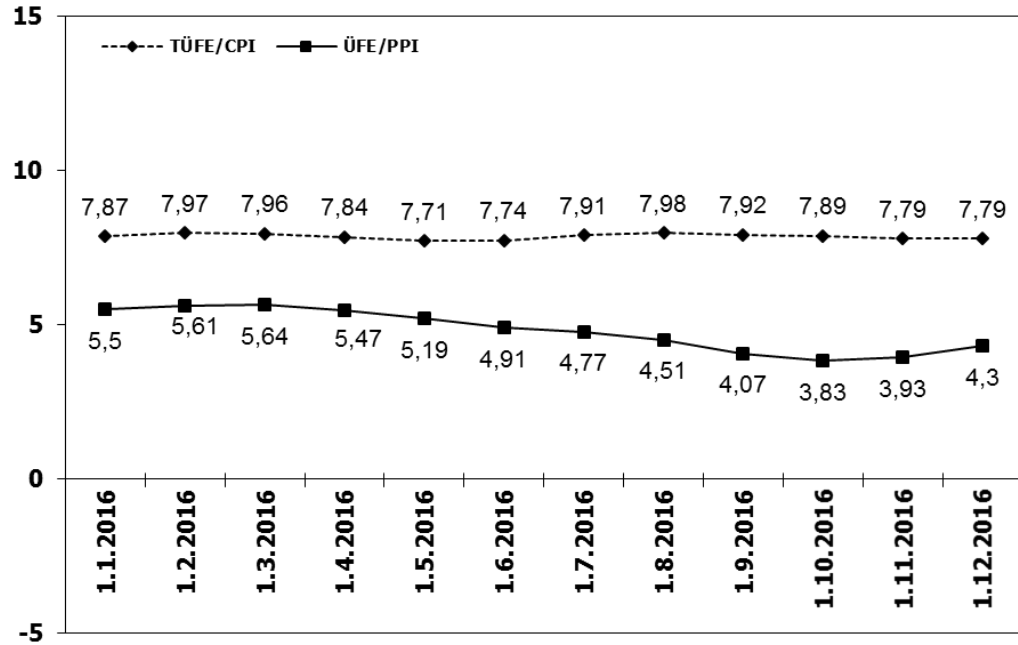
Truck Market (2006-2016 January-December)



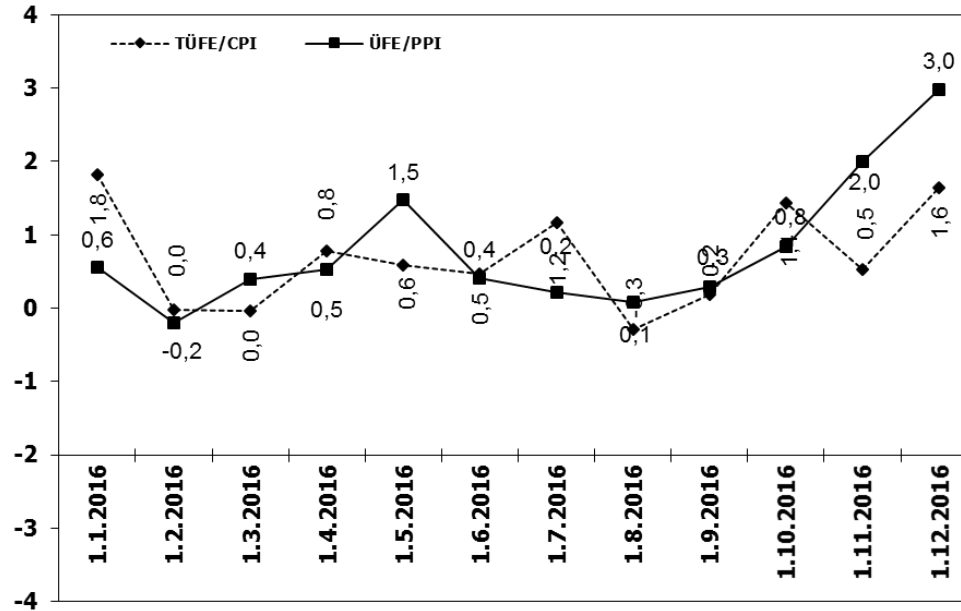
	2006	2007	2008	2009	2010	2011	2012	2013	2014	2015	2016
Yerli/Local	3.809	3.661	4.511	2.205	2.372	3.104	3.084	3.959	3.019	3.312	2.019
İthal/Imports	0	0	0	11	0	0	0	0	0	0	0
Toplam/Total	3.809	3.661	4.511	2.216	2.372	3.104	3.084	3.959	3.019	3.312	2.019
İthalat/Imports (%)	0	0	0	0	0	0	0	0	0	0	0

	2006	2007	2008	2009	2010	2011	2012	2013	2014	2015	2016
Yerli/Local	30.980	23.675	18.316	10.673	18.629	28.720	24.548	23.768	24.794	24.200	12.425
İthal/Imports	11.091	10.510	7.944	4.242	9.733	12.072	9.817	7.992	10.614	13.633	8.332
Toplam/Total	42.071	34.185	26.260	14.915	28.362	40.792	34.365	31.760	35.408	37.833	20.757
İthalat/Imports (%)	26	31	30	28	34	30	29	25	30	36	40

TÜFE ve ÜFE'nin 12 Aylık Ort. Değişimi (%) CPI and PPI 12 Months Avr. Changes (%)



TÜFE ve ÜFE'nin Aylık Değişimi (%) CPI and PPI Monthly Changes (%)



2016 Otomotiv Sanayii Dış Satışlar 2016 Automotive Industry Exports Sales

TIPLER-Types	Ocak January	Şubat February	Mart March	Nisan April	Mayıs May	Haziran June	Temmuz July	Ağustos August	Eylül September	Ekim October	Kasım November	Aralık December	TOPLAM Total
Otomobil	38.621	60.149	60.631	55.557	60.692	64.973	47.826	51.748	60.526	74.244	83.635	87.107	745.709
OTOMOBİL-Pass. Car	38.621	60.149	60.631	55.557	60.692	64.973	47.826	51.748	60.526	74.244	83.635	87.107	745.709
TİCARİ ARAÇ	30.179	38.548	38.174	37.583	33.586	37.062	31.770	18.402	29.872	35.295	33.407	31.795	395.673
* KAMYONET-Pick Up	28.779	36.960	36.393	35.857	28.361	29.086	26.410	15.178	25.554	29.962	28.295	27.114	347.949
* KAMYON-Truck	158	335	325	420	501	552	741	450	776	465	466	332	5.521
* MIDİBÜS-Midibus	37	39	68	72	82	88	51	182	85	101	57	53	915
* MINİBÜS-Minibus	723	605	804	674	4.053	6.697	4.247	2.034	2.990	4.162	4.055	3.746	34.790
* OTOBÜS-Bus	482	609	584	560	589	639	321	558	467	605	534	550	6.498
Traktör	1.340	1.122	1.340	1.327	1.215	1.187	1.339	635	671	1.259	1.142	1.074	13.651
TRAKTÖR-F.Tractor	1.340	1.122	1.340	1.327	1.215	1.187	1.339	635	671	1.259	1.142	1.074	13.651
TOPLAM-Total	70.140	99.819	100.145	94.467	95.493	103.222	80.935	70.785	91.069	110.798	118.184	119.976	1.155.033

Otomobil

FİRMALAR-Companies	Ocak January	Şubat February	Mart March	Nisan April	Mayıs May	Haziran June	Temmuz July	Ağustos August	Eylül September	Ekim October	Kasım November	Aralık December	TOPLAM Total
FORD OTOSAN	1.559	1.341	1.523	1.515	1.063	1.660	1.261	1.119	1.392	1.377	1.992	917	16.719
HONDA TÜRKİYE	149	0	526	60	230	124	63	106	544	103	563	446	2.914
HYUNDAI ASSAN	18.350	18.300	19.800	16.180	17.300	19.100	11.300	14.560	16.420	18.400	18.523	19.001	207.234
ÖYAK RENAULT	9.605	25.721	24.792	24.166	27.251	28.006	15.145	17.660	19.188	24.221	27.963	26.370	270.088
TOFAŞ	4.667	8.671	8.032	8.530	9.984	13.068	11.365	9.122	14.309	16.374	17.533	17.915	139.570
TOYOTA	4.291	6.116	5.958	5.106	4.864	3.015	8.692	9.181	8.673	13.769	17.601	22.458	109.184
TOPLAM-Total	38.621	60.149	60.631	55.557	60.692	64.973	47.826	51.748	60.526	74.244	83.635	87.107	745.709

Kamyonet

FİRMALAR-Companies	Ocak January	Şubat February	Mart March	Nisan April	Mayıs May	Haziran June	Temmuz July	Ağustos August	Eylül September	Ekim October	Kasım November	Aralık December	TOPLAM Total
FORD OTOSAN	18.721	22.710	23.358	20.607	12.878	14.587	16.204	9.650	13.731	17.048	17.335	17.836	204.665
KARŞAN	67	229	77	35	392	421	319	350	354	511	53	432	3.240
OTOKAR	0	0	33	0	0	9	0	24	18	0	0	0	170
TOFAŞ	9.991	14.021	12.925	15.215	15.091	14.069	9.887	5.154	11.451	12.403	10.907	8.760	139.874
TOPLAM-Total	28.779	36.960	36.393	35.857	28.361	29.086	26.410	15.178	25.554	29.962	28.295	27.114	347.949

Minibüs

FİRMALAR-Companies	Ocak January	Şubat February	Mart March	Nisan April	Mayıs May	Haziran June	Temmuz July	Ağustos August	Eylül September	Ekim October	Kasım November	Aralık December	TOPLAM Total
FORD OTOSAN	721	595	749	674	4.050	6.689	4.240	2.023	2.963	4.100	4.037	3.666	34.507
KARŞAN	2	10	55	0	3	8	7	11	27	62	18	80	283
TOPLAM-Total	723	605	804	674	4.053	6.697	4.247	2.034	2.990	4.162	4.055	3.746	34.790

Kamyon

FİRMALAR-Companies	Ocak January	Şubat February	Mart March	Nisan April	Mayıs May	Haziran June	Temmuz July	Ağustos August	Eylül September	Ekim October	Kasım November	Aralık December	TOPLAM Total
A.I.O.S.	0	0	0	0	1	0	0	0	1	0	6	0	8
FORD OTOSAN	12	13	71	64	38	62	23	57	87	51	85	252	815
KARŞAN	0	0	0	1	0	0	0	0	0	0	0	0	1
M. BENZ TÜRK	146	322	254	355	462	490	718	393	688	414	375	80	4.697
TOPLAM-Total	158	335	325	420	501	552	741	450	776	465	466	332	5.521

Midibüs

FİRMALAR-Companies	Ocak January	Şubat February	Mart March	Nisan April	Mayıs May	Haziran June	Temmuz July	Ağustos August	Eylül September	Ekim October	Kasım November	Aralık December	TOPLAM Total
A.I.O.S.	14	15	29	30	42	54	16	133	67	34	27	25	486
KARŞAN	1	2	0	1	2	0	2	1	0	0	4	2	15
OTOKAR	7	12	24	37	25	31	32	26	13	50	22	11	290
TEMSA GLOBAL	15	10	15	4	13	3	1	22	5	17	4	15	124
TOPLAM-Total	37	39	68	72	82	88	51	182	85	101	57	53	915

Otobüs

FİRMALAR-Companies	Ocak January	Şubat February	Mart March	Nisan April	Mayıs May	Haziran June	Temmuz July	Ağustos August	Eylül September	Ekim October	Kasım November	Aralık December	TOPLAM Total
A.I.O.S.	0	1	6	7	18	24	1	17	35	11	17	42	179
KARŞAN	0	0	0	0	0	20	0	10	21	0	33	6	90
M. BENZ TÜRK	316	366	344	274	342	295	199	349	246	362	260	257	3.610
MAN TÜRKİYE	131	231	170	151	102	178	67	100	127	166	144	150	1.717
OTOKAR	17	10	33	43	38	72	30	14	16	14	43	43	373
TEMSA GLOBAL	18	1	31	85	89	50	24	68	22	52	37	52	529
TOPLAM-Total	482	609	584	560	589	639	321	558	467	605	534	550	6.498

Traktör

FİRMALAR-Companies	Ocak January	Şubat February	Mart March	Nisan April	Mayıs May	Haziran June	Temmuz July	Ağustos August	Eylül September	Ekim October	Kasım November	Aralık December	TOPLAM Total
HATTAT TARIM	33	107	82	151	145	111	0	35	52	74	137	99	1.026
TÜRK TRAKTÖR	1.307	1.015	1.258	1.176	1.070	1.076	1.339	600	619	1.185	1.005	975	12.625
TOPLAM-Total	1.340	1.122	1.340	1.327	1.215	1.187	1.339	635	671	1.259	1.142	1.074	13.651

2016 Yılı İthal Hafif Araç Satışları 2016 Light Vehicles Import Sales

2016 YILI İTHAL OTOMOBİL SATIŞLARI / P.Cars Import 2016

	2015 TOPLAMI 2015 Total	1	2	3	4	5	6	7	8	9	10	11	12	2016 TOPLAMI 2016 Total
VOLKSWAGEN	107.401	2.792	5.763	8.197	7.811	9.597	9.561	7.239	8.438	8.026	9.211	10.587	14.539	101.761
OPEL	47.000	1.263	2.521	3.936	4.775	5.754	5.808	3.495	4.116	3.336	4.630	7.129	8.707	55.471
DACIA	37.257	1.235	1.963	3.402	3.555	4.179	3.799	2.680	3.120	3.118	3.989	4.745	6.324	42.109
RENAULT	32.683	1.258	2.007	4.030	3.336	3.983	3.759	3.507	4.073	2.471	3.074	3.926	6.998	42.422
FORD	43.341	972	2.733	3.347	3.141	3.231	4.439	2.025	2.294	1.813	2.467	3.728	3.263	33.453
MERCEDES-BENZ	30.333	1.091	1.701	2.480	2.305	3.080	3.786	1.651	2.456	2.758	2.378	5.858	3.122	32.666
BMW	31.221	496	2.042	2.080	2.332	3.174	2.640	1.856	2.230	1.806	2.205	4.611	1.694	27.166
SKODA	22.107	715	1.435	2.640	2.663	2.787	2.865	1.661	2.357	1.854	2.685	3.705	3.509	28.876
NISSAN	26.421	971	1.534	2.989	2.684	2.546	2.584	1.212	2.183	1.957	2.329	4.237	5.287	30.513
HYUNDAI	25.164	1.148	1.499	2.651	2.344	2.649	2.296	1.286	1.890	1.947	2.254	2.933	3.566	26.463
PEUGEOT	22.808	540	1.730	2.526	1.557	2.349	2.099	1.497	1.601	2.178	2.295	3.207	3.861	25.440
SEAT	16.911	502	853	1.443	2.130	1.726	1.929	1.870	1.943	1.496	2.121	3.016	1.608	20.637
AUDI	20.279	911	1.200	1.455	2.148	2.352	1.961	905	903	1.541	2.448	3.189	2.992	22.005
CITROEN	16.520	394	366	1.562	1.684	1.929	1.613	1.221	1.080	1.519	1.381	2.017	2.275	17.041
KIA	13.873	263	574	1.080	1.461	979	1.281	1.435	1.378	954	1.092	2.251	1.650	14.398
TOYOTA	12.304	149	588	955	836	1.040	913	754	1.104	858	1.302	1.839	1.175	11.513
HONDA	5.413	366	669	1.077	535	629	617	612	777	852	606	732	1.242	8.714
SUZUKI	177	7	0	194	151	332	422	234	370	462	575	648	536	3.931
VOLVO	6.939	187	194	311	335	512	465	130	203	222	291	462	788	4.100
FIAT	5.241	162	247	336	278	266	232	171	262	212	207	308	422	3.103
LAND ROVER	1.577	46	131	318	186	200	201	103	215	169	136	232	171	2.108
JEEP	3.507	92	161	204	188	187	218	99	152	169	192	268	262	2.192
MINI	1.739	101	74	134	166	161	143	83	123	147	152	226	178	1.688
SUBARU	1.737	73	112	152	148	165	122	74	103	101	113	201	220	1.584
MAZDA	1.761	50	67	114	157	171	137	127	84	88	88	151	193	1.427
PORSCHE	861	55	40	55	59	61	68	32	59	70	91	134	103	827
MITSUBISHI	1.366	39	71	53	48	79	57	45	61	50	58	92	56	709
ALFA ROMEO	847	12	75	149	58	68	48	33	31	32	37	53	38	634
SSANGYONG	605	19	23	37	34	76	70	23	55	47	45	41	37	507
JAGUAR	336	20	25	34	31	33	48	35	41	42	50	72	50	481
DS	0	8	34	42	35	24	14	19	34	32	17	42	99	400
CHERY	394	30	23	12	9	22	25	22	1	0	0	0	0	144
SMART	88	0	0	16	13	24	12	5	6	14	18	29	55	192
INFINITI	43	0	0	0	4	6	23	6	7	11	12	24	27	120
LEXUS	13	0	0	6	7	2	3	4	5	4	7	24	2	64
MASERATI	73	1	6	1	5	3	6	1	5	5	12	14	13	72
PROTON	500	10	7	10	12	12	0	0	0	0	0	0	0	51
ASTON MARTIN	0	2	1	2	4	4	3	2	3	4	1	2	1	29
FERRARI	10	3	1	0	4	3	1	0	0	1	1	2	2	18
BENTLEY	19	0	1	0	0	1	0	1	0	3	1	2	0	9
LAMBORGHINI	6	0	1	0	1	0	1	0	3	0	0	1	0	7
TATA	168	0	0	0	0	0	0	0	0	0	0	0	0	0
GEELY	25	0	0	0	0	0	0	0	0	0	0	0	0	0
LANCIA	2	0	0	0	0	0	0	0	0	0	0	0	0	0
TOPLAM	539.070	15.983	30.472	48.030	47.230	54.396	54.270	36.155	43.766	40.369	48.571	70.738	75.065	565.045

2016 YILI İTHAL HAFİF TİCARİ ARAÇ SATIŞLARI / Light Commercial Vehicles Import 2016

	2015 TOPLAMI 2015 Total	1	2	3	4	5	6	7	8	9	10	11	12	2016 TOPLAMI 2016 Total
VOLKSWAGEN	31.642	1.736	2.391	3.096	2.674	2.839	2.845	1.845	2.729	2.284	3.018	3.772	3.543	32.772
RENAULT	15.617	451	602	983	1.442	1.466	1.333	761	864	1.189	1.483	1.929	2.588	15.091
PEUGEOT	8.212	467	284	471	835	532	1.183	463	819	472	761	831	1.284	8.402
MERCEDES-BENZ	8.457	360	549	925	671	684	760	253	485	553	651	1.075	1.104	8.070
CITROEN	6.511	207	213	752	670	398	690	477	592	528	636	711	1.010	6.884
FIAT	9.072	272	374	615	333	343	417	309	444	521	495	688	1.074	5.885
TOYOTA	2.928	34	178	514	402	549	378	310	549	543	518	722	948	5.645
DACIA	7.555	221	228	380	512	572	429	320	389	502	249	747	873	5.422
FORD	4.028	85	189	298	255	428	596	370	487	344	510	631	685	4.878
KIA	4.110	155	196	387	324	464	419	211	354	209	355	538	340	3.952
MITSUBISHI	3.897	324	151	312	329	220	385	244	352	240	168	322	486	3.533
HYUNDAI	1.612	71	117	138	163	186	158	153	240	176	214	231	397	2.244
IVECO	2.710	88	131	173	163	246	172	89	142	161	199	262	349	2.175
NISSAN	7	0	0	175	126	92	121	110	91	116	123	192	394	1.540
SUZU	333	57	34	90	25	23	32	73	53	24	96	14	534	1.055
SSANGYONG	303	3	5	16	19	31	38	10	22	17	49	36	8	254
TATA	228	9	0	0	0	0	0	0	0	0	0	0	0	9
TOPLAM	107.222	4.540	5.642	9.325	8.943	9.073	9.956	5.998	8.612	7.875	9.525	12.701	15.617	107.811