



OTOMOTİV SANAYİİ DERNEĞİ
AUTOMOTIVE MANUFACTURERS ASSOCIATION

AYLIK RAPOR

Automotive Industry Monthly Report

Ağustos / August 2017

- **Üretim/Production**
- **Satış/Sales**
- **İthalat/Imports**
- **İhracat/Exports**

OSD "OICA" Üyesidir



OSD is a Member of "OICA"

2017 Ağustos Ayı Özeti / 2017 August Summary

		AĞUSTOS / AUGUST			8 AY/ 8 MONTHS			SON 12 AYLIK / YoY		
		2016	2017	2017/2016 (%)	2016	2017	2017/2016 (%)	2016	2017	2017/2016 (%)
Üretim/Production	Toplam/Total	78.086	71.463	-8	914.884	1.089.595	19	1.416.383	1.660.669	17
	Otomobil/P.Cars	52.296	50.453	-4	562.692	750.024	33	854.067	1.138.244	33
Pazar/Market	Toplam/Total	73.269	74.278	1	583.771	569.076	-3	968.388	993.164	3
	Otomobil/P.Cars	53.977	54.890	2	438.025	423.198	-3	709.804	742.111	5
İthalat/Import	Toplam/Total	52.865	50.439	-5	397.389	363.951	-8	642.846	647.872	1
	Otomobil/P.Cars	43.766	40.434	-8	330.302	294.037	-11	529.736	528.780	0
İhracat/Export	Toplam/Total	70.150	61.299	-13	705.501	889.656	26	1.080.911	1.325.524	23
	Otomobil/P.Cars	51.748	44.926	-13	440.197	625.010	42	667.910	930.522	39
İhracat / Export (\$)	Toplam/Total **	1.706.885.055	1.891.783.534	11	15.382.804.159	18.912.395.603	23	23.213.734.203	27.800.878.909	20
	Otomobil/P.Cars	585.858.940	645.095.753	10	4.763.214.974	7.794.556.743	64	7.235.462.565	11.374.349.555	57

PARAMETRELER / PARAMETERS		AĞUSTOS / AUGUST			8 AY/ 8 MONTHS			SON 12 AYLIK / YoY		
		2016	2017	2017/2016 (%)	2016	2017	2017/2016 (%)	2016	2017	2017/2016 (%)
ÜFE/PPI		0,08	0,85	**	3,49	9,52	**	4,51	12,05	**
TÜFE/CPI		-0,29	0,52	**	4,53	6,60	**	7,98	9,66	**
Sanayi Endeksi/Industry Index		0,38	0,86	**	4,68	10,15	**	5,44	13,82	**
\$ (*)		2,9650	3,4766	17	2,9124	3,5775	23	2,9158	3,4487	18
EURO (*)		3,3065	4,1465	25	3,2394	3,9578	22	3,2285	3,7976	18
Japon Yeni (*)		2,8698	3,1589	10	2,6405	3,1752	20	2,5613	3,1006	21

(*) Ortalama Değerler / Average Values

() Toplam Sanayi / Total Industry Including Components**

*Raporda yer alan üretim adetleri yalnızca OSD üyelerinin verilerini göstermektedir.
Production units in this report only show the data of OSD members.*

2016/2017 Yılları Üretim

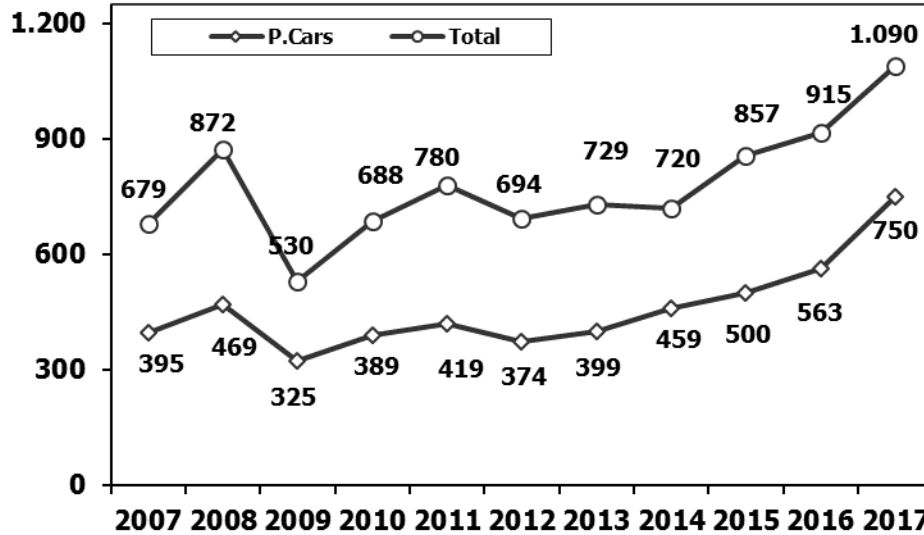
2016/2017 Production

K.KAMYON : AYA 3.5-12 Ton (L.Truck:GVW 3.5-12 Ton)

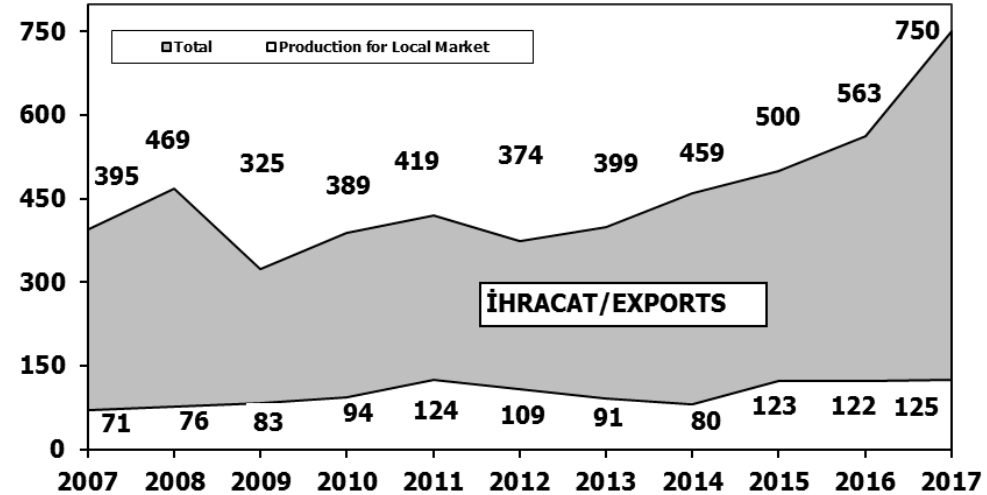
B.KAMYON : AYA 12 Ton'dan Büyük (M.Truck:GVW 12 Ton And Up)

ARAÇ TİPLERİ	AĞUSTOS AYI ÜRETİMİ August Production		8 AYLIK ÜRETİM 8 Months Production		DEĞİŞİM % Percent Change %	
	2016	2017	2016	2017	AĞUSTOS August	8 AY 8 Months
OTOMOBİL - Pass.Car	52.296	50.453	562.692	750.024	-4	33
TİCARİ ARAÇLAR - Commercial Vehicles	25.790	21.010	352.192	339.571	-19	-4
* B. KAMYON - H. Truck	836	796	10.096	10.718	-5	6
* K. KAMYON - L. Truck	304	272	1.514	2.054	-11	36
* KAMYONET - Pick Up	20.977	16.668	306.319	283.907	-21	-7
* OTOBÜS - Bus	627	580	5.592	5.869	-7	5
* MİNİBÜS - Minibus	2.606	2.377	26.369	35.030	-9	33
* MİDİBÜS - Midibus	440	317	2.302	1.993	-28	-13
TAŞIT ARAÇLARI TOPLAM - MV Total	78.086	71.463	914.884	1.089.595	-8	19
TRAKTÖR - F.Tractor	1.581	3.853	35.601	33.824	144	-5
GENEL TOPLAM - Grand Total	79.667	75.316	950.485	1.123.419	-5	18

Toplam Üretim ve Otomobil Üretimi (x1000) (Ocak-Ağustos)
Total & P.Cars Production (x1000) (January-August)

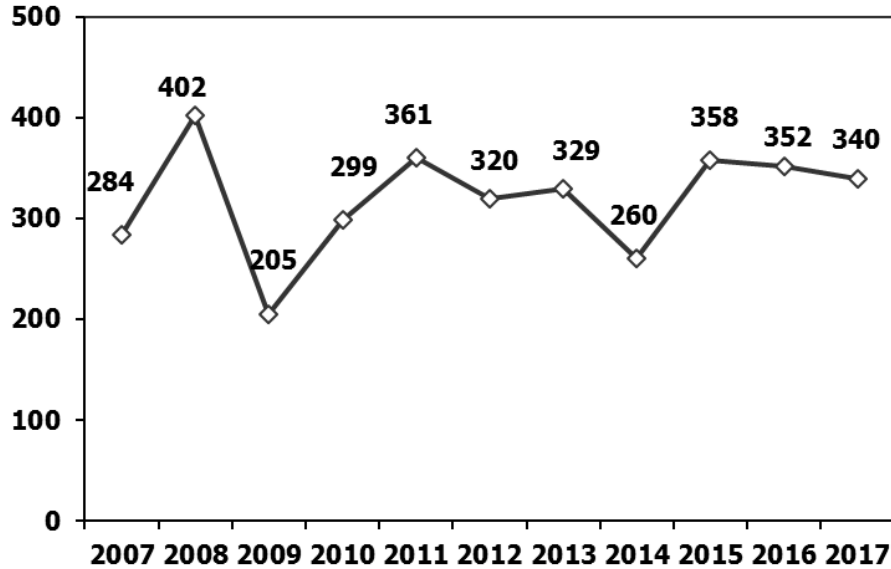


Otomobil Üretimi ve İhracat (x1000) (Ocak-Ağustos)
P.Cars Production & Exports (x1000) (January-August)



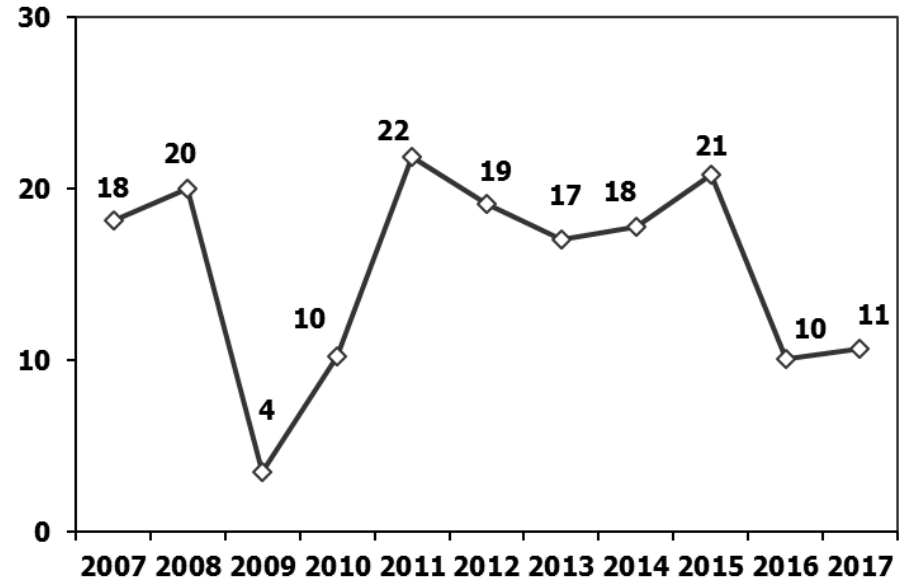
Ticari Araç Üretimi (x1000) (Ocak-Ağustos)

Commercial Vehicle Production (x1000) (January-August)



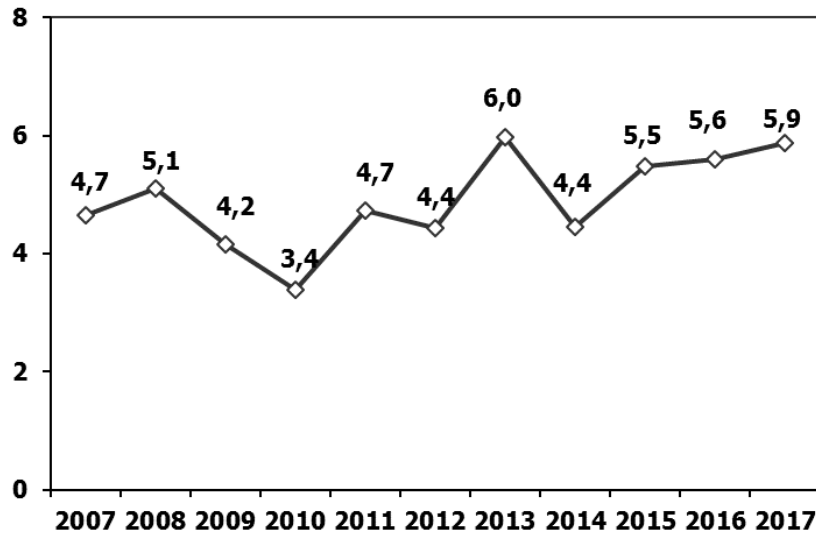
(AYA >12 Ton) **Büyük Kamyon Üretimi** (x1000) (Ocak-Ağustos)

(GVW >12 Ton) Heavy Truck Production (x1000) (January-August)



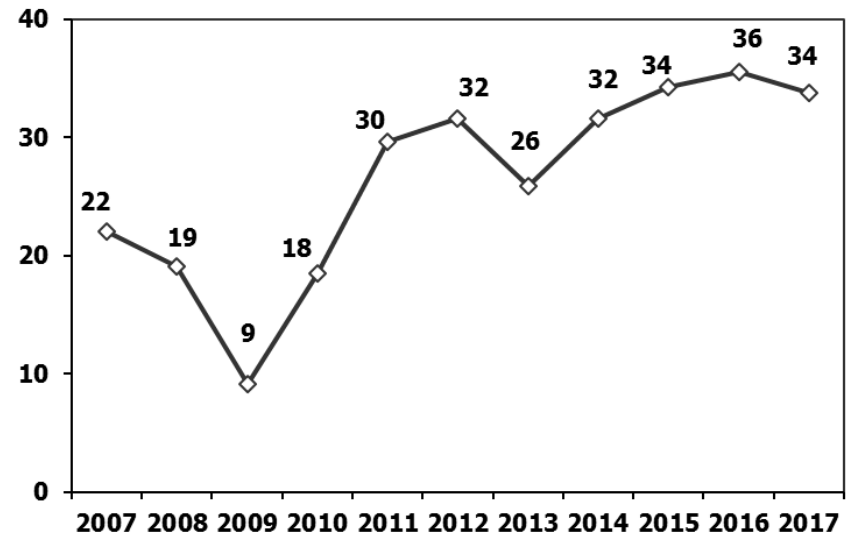
Otobüs Üretimi (x1000) (Ocak-Ağustos)

Bus Production (x1000) (January-August)



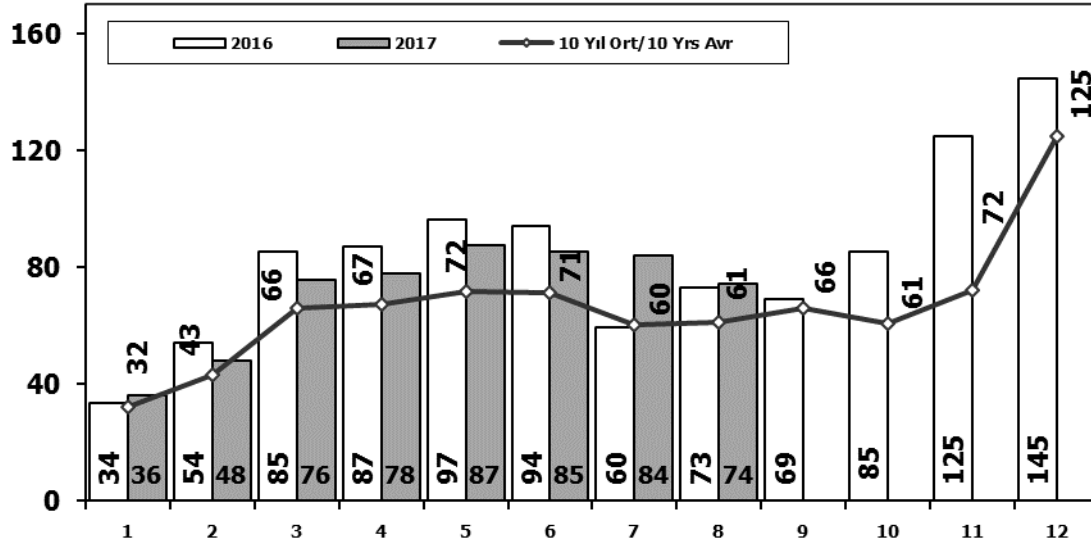
Traktör Üretimi (x1000) (Ocak-Ağustos)

F. Tractor Production (x1000) (January-August)



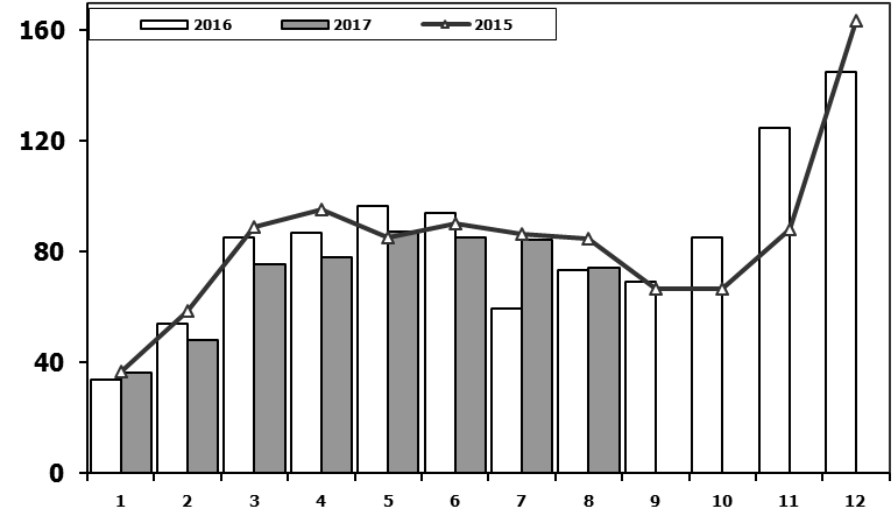
Toplam Pazarın Analizi (x1000)

Total Market Analysis (x1000)



Toplam Pazar (x1000)

Total Market (x1000)

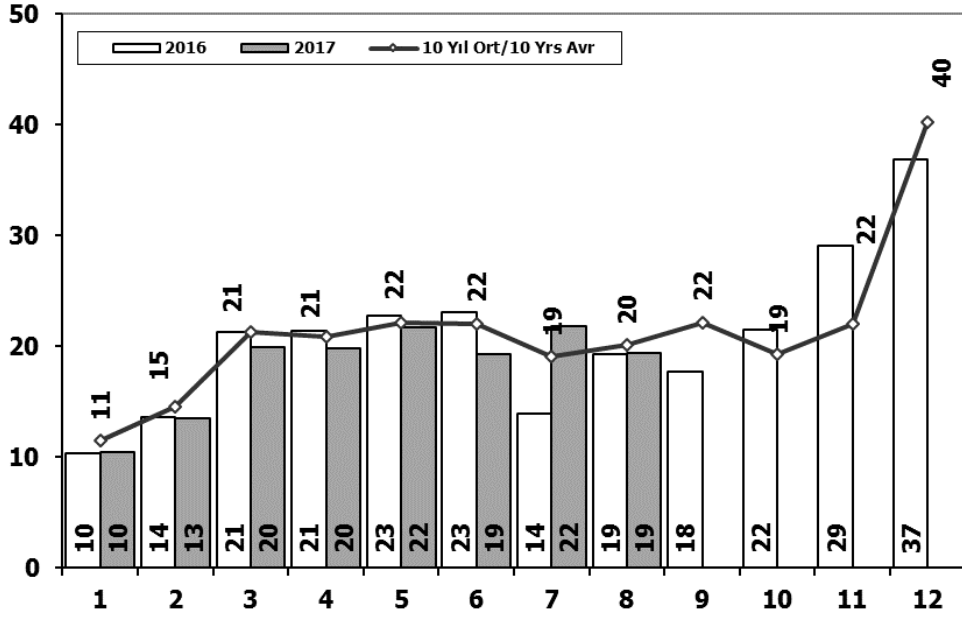


Aylar / Months	10 Yil Ort. 10 Yrs Avr. (x1000)	2017 (x1000)	%
1	32,1	36,1	12,6
2	43,2	48,1	11,4
3	66,3	75,6	14,0
4	67,2	77,8	15,8
5	71,8	87,5	21,8
6	71,5	85,4	19,5
7	60,2	84,2	39,8
8	61,3	74,3	21,2
Total	473,7	569,1	20,1

	1	2	3	4	5	6	7	8	9	10	11	12	8 Ay/Mo	Total
2007	24.950	31.702	45.488	45.633	51.255	51.661	50.117	54.171	50.078	56.058	67.017	106.076	354.977	634.206
2008	33.792	38.121	56.814	50.967	51.627	49.393	44.692	46.592	46.829	35.147	28.152	44.418	371.998	526.544
2009	20.631	22.846	56.531	54.426	64.887	63.102	30.246	37.092	83.403	22.117	29.202	91.386	349.761	575.869
2010	21.050	32.313	53.828	57.079	61.628	63.390	63.718	64.645	66.601	76.780	77.406	154.734	417.651	793.172
2011	47.658	62.348	83.333	82.071	85.093	85.863	65.364	61.378	63.643	72.640	67.195	134.281	573.108	910.867
2012	31.219	43.827	68.957	66.014	74.820	74.781	65.122	60.848	73.197	62.677	75.045	121.113	485.588	817.620
2013	37.140	50.931	72.688	77.015	85.421	77.771	74.726	67.383	71.037	60.399	83.017	135.596	543.075	893.124
2014	34.225	37.308	50.964	56.766	61.909	63.952	62.206	62.839	70.180	69.259	83.937	153.941	430.169	807.486
2015	36.576	58.533	89.121	95.431	85.145	90.463	86.625	84.683	66.622	66.520	88.043	163.432	626.577	1.011.194
2016	33.740	54.223	85.214	87.041	96.576	94.203	59.505	73.269	69.068	85.251	124.839	144.928	583.771	1.007.857
2017	36.146	48.141	75.581	77.849	87.476	85.416	84.189	74.278					569.076	569.076

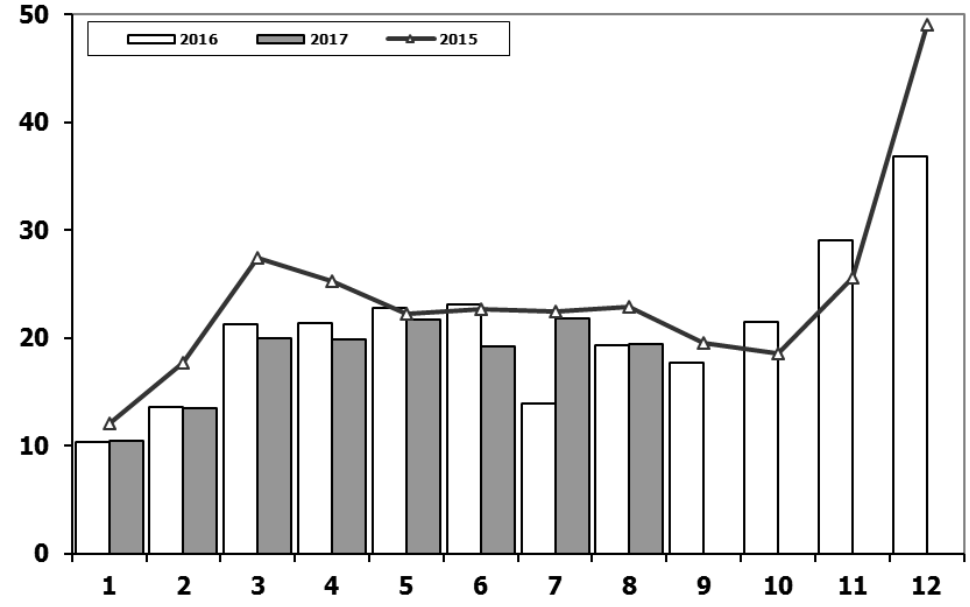
Ticari Araç Pazarının Analizi (x1000)

CV Market Analysis (x1000)



Ticari Araç Pazarı (x1000)

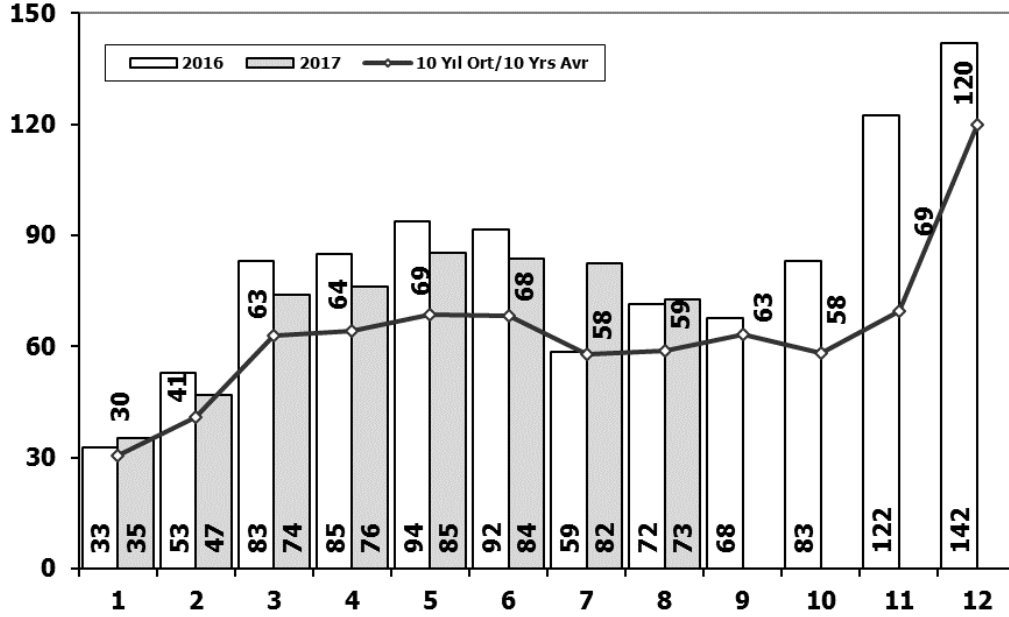
CV Total Market (x1000)



Aylar / Months	10 Yil Ort. 10 Yrs Avr. (x1000)	2017 (x1000)	%	1	2	3	4	5	6	7	8	9	10	11	12	8 Ay/Mo	Total	
				2007	11.764	14.490	21.152	20.429	22.188	21.535	21.871	25.702	22.416	23.489	27.374	44.331	159.131	276.741
				2008	15.204	16.925	22.667	20.654	20.150	20.669	19.162	20.490	19.776	15.359	10.951	18.539	155.921	220.546
1	11,4	10,5	-8,6	2009	7.458	8.354	15.909	18.224	20.699	22.083	13.609	14.555	31.241	8.289	11.421	34.208	120.891	206.050
2	14,5	13,5	-7,0	2010	8.456	11.662	19.870	20.530	21.161	21.304	22.319	22.423	24.124	28.921	27.345	55.273	147.725	283.388
3	21,3	20,0	-6,4	2011	17.790	23.344	29.310	28.236	28.791	29.149	21.846	22.503	23.679	25.132	22.244	45.324	200.969	317.348
4	20,9	19,9	-5,1	2012	10.142	14.638	21.687	20.369	24.360	23.932	20.591	19.612	23.837	19.237	22.748	40.187	155.331	261.340
5	22,1	21,7	-1,9	2013	11.305	14.117	20.903	20.016	23.038	19.481	19.014	15.772	18.112	13.414	18.900	34.397	143.646	228.469
6	22,1	19,3	-12,7	2014	9.857	10.141	13.152	13.997	15.530	16.674	15.604	17.708	20.918	18.445	24.242	43.887	112.663	220.155
7	19,0	21,8	14,5	2015	12.078	17.716	27.445	25.220	22.267	22.697	22.407	22.930	19.534	18.566	25.646	49.092	172.760	285.598
8	20,1	19,4	-3,5	2016	10.382	13.635	21.239	21.423	22.744	23.092	13.939	19.292	17.728	21.505	29.056	36.884	145.746	250.919
Total	151,5	145,9	-3,7	2017	10.457	13.483	19.965	19.851	21.677	19.252	21.805	19.388					145.878	145.878

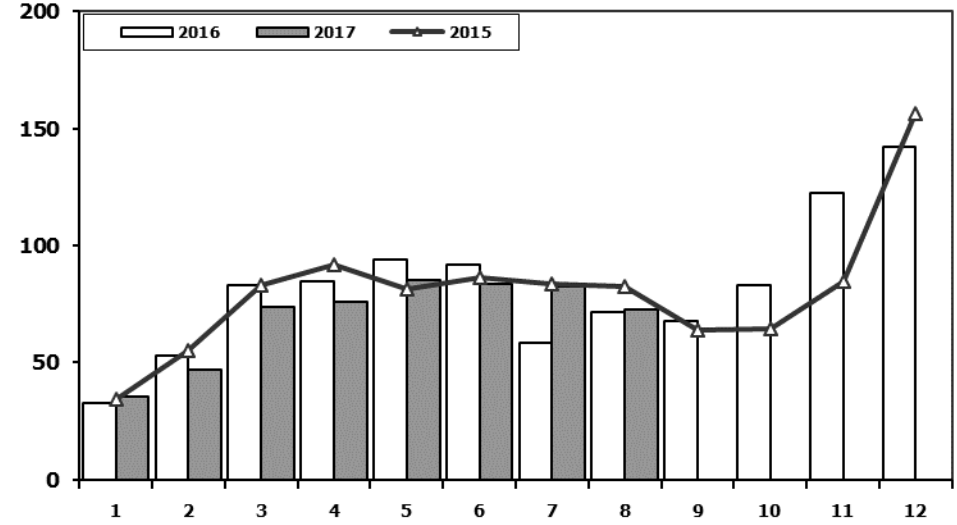
Hafif Araç Pazarının Analizi (x1000)

LV Market Analysis (x1000)



Hafif Araç Pazarı (x1000)

LV Total Market (x1000)

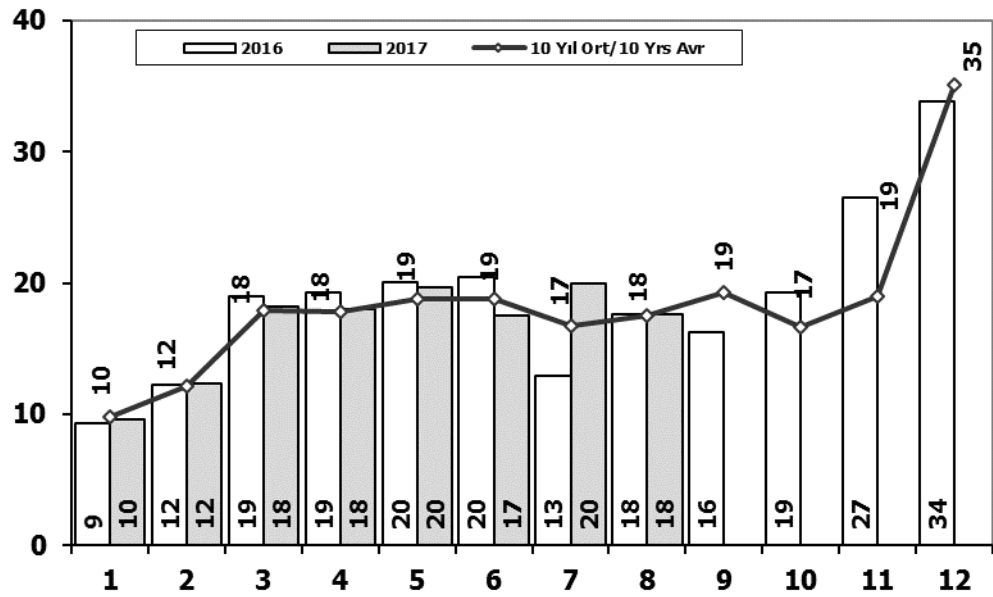


Aylar / Months	10 Yil Ort. 10 Yrs Avr. (x1000)	2017 (x1000)	%
1	30,4	35,3	16,1
2	40,9	47,0	14,9
3	62,8	73,8	17,5
4	64,2	76,0	18,4
5	68,6	85,4	24,6
6	68,2	83,7	22,7
7	57,9	82,3	42,1
8	58,8	72,5	23,5
Total	451,7	556,0	23,1

	1	2	3	4	5	6	7	8	9	10	11	12	8 Ay/Mo	Total
2007	23.117	29.184	41.890	42.366	47.938	48.674	47.490	50.558	46.581	52.725	63.313	100.926	331.217	594.762
2008	31.527	35.251	53.649	47.701	48.598	46.324	42.156	43.670	43.932	32.884	26.253	42.078	348.876	494.023
2009	19.606	21.742	55.111	52.640	63.191	61.067	28.845	35.609	81.397	21.033	27.962	88.923	337.811	557.126
2010	20.095	31.172	51.769	54.946	59.377	60.896	61.345	61.764	63.814	73.404	73.962	148.369	401.364	760.913
2011	44.892	58.663	78.403	77.695	80.646	81.573	63.044	58.406	60.129	69.421	63.657	127.910	543.322	864.439
2012	29.545	41.324	64.884	62.949	70.863	71.067	62.304	58.148	69.629	59.938	71.710	115.400	461.084	777.761
2013	35.523	48.307	68.774	73.575	81.468	74.096	71.596	65.043	67.963	58.014	79.301	129.718	518.382	853.378
2014	32.670	35.021	47.581	53.305	58.121	60.163	59.907	60.199	66.531	66.573	80.621	146.989	406.967	767.681
2015	34.615	55.331	83.302	91.602	81.542	86.158	83.836	82.577	64.025	64.255	84.601	156.173	598.963	968.017
2016	32.713	52.825	82.948	84.887	93.904	91.540	58.533	71.556	67.593	83.000	122.309	141.912	568.906	983.720
2017	35.323	46.965	73.802	75.988	85.422	83.658	82.297	72.536					555.991	555.991

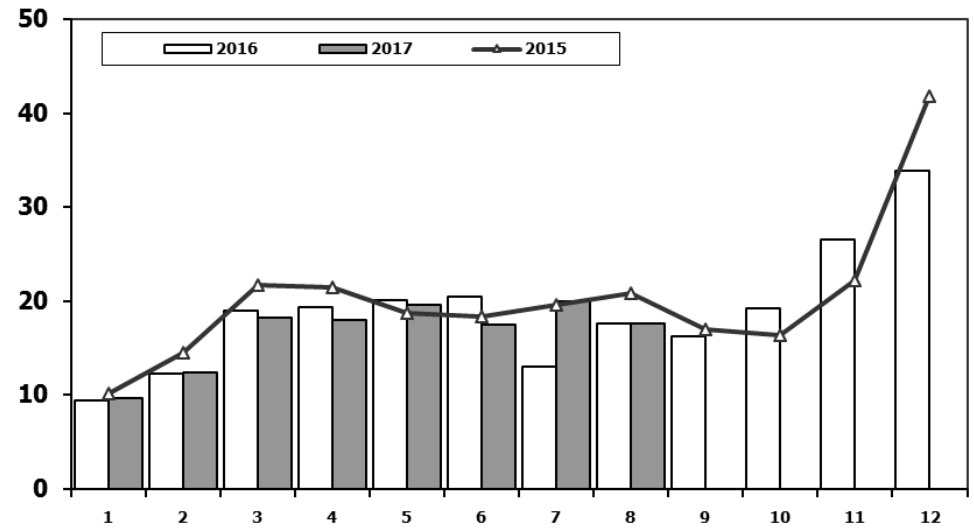
Hafif Ticari Araç Pazarının Analizi (x1000)

LCV Market Analysis (x1000)



Hafif Ticari Araç Pazarı (x1000)

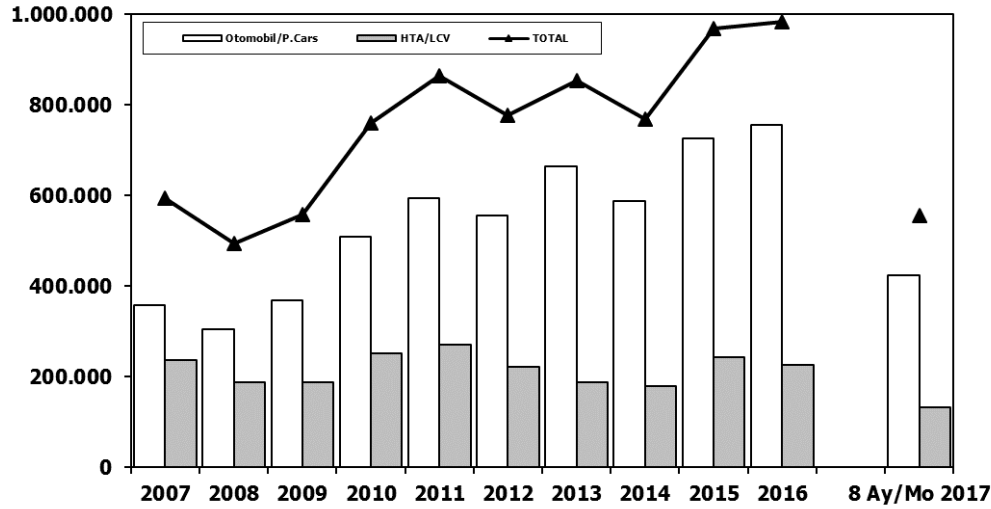
LCV Total Market (x1000)



Aylar / Months	10 Yil Ort. 10 Yrs Avr. (x1000)	2017 (x1000)	%	1	2	3	4	5	6	7	8	9	10	11	12	8 Ay/Mo	Total
1	9,8	9,6	-1,5	9.931	11.972	17.554	17.162	18.871	18.548	19.244	22.089	18.919	20.156	23.670	39.181	135.371	237.297
2	12,2	12,3	1,1	12.939	14.055	19.502	17.388	17.121	17.600	16.626	17.568	16.879	13.096	9.052	16.199	132.799	188.025
3	17,9	18,2	1,8	6.433	7.250	14.489	16.438	19.003	20.048	12.208	13.072	29.235	7.205	10.181	31.745	108.941	187.307
4	17,8	18,0	0,9	7.501	10.521	17.811	18.397	18.910	18.810	19.946	19.542	21.337	25.545	23.901	48.908	131.438	251.129
5	18,8	19,6	4,3	15.024	19.659	24.380	23.860	24.344	24.859	19.526	19.531	20.165	21.913	18.706	38.953	171.183	270.920
6	18,8	17,5	-6,7	8.468	12.135	17.614	17.304	20.403	20.218	17.773	16.912	20.269	16.498	19.413	34.474	130.827	221.481
7	16,7	19,9	19,2	9.688	11.493	16.989	16.576	19.085	15.806	15.884	13.432	15.038	11.029	15.184	28.519	118.953	188.723
8	17,6	17,6	0,5	8.302	7.854	9.769	10.536	11.742	12.885	13.305	15.068	17.269	15.759	20.926	36.935	89.461	180.350
2015	10.117	14.514	21.626	21.391	18.664	18.392	19.618	20.824	16.937	16.301	22.204	41.833	145.146	242.421			
2016	9.355	12.237	18.973	19.269	20.072	20.429	12.967	17.579	16.253	19.254	26.526	33.868	130.881	226.782			
2017	9.634	12.307	18.186	17.990	19.623	17.494	19.913	17.646							132.793	132.793	

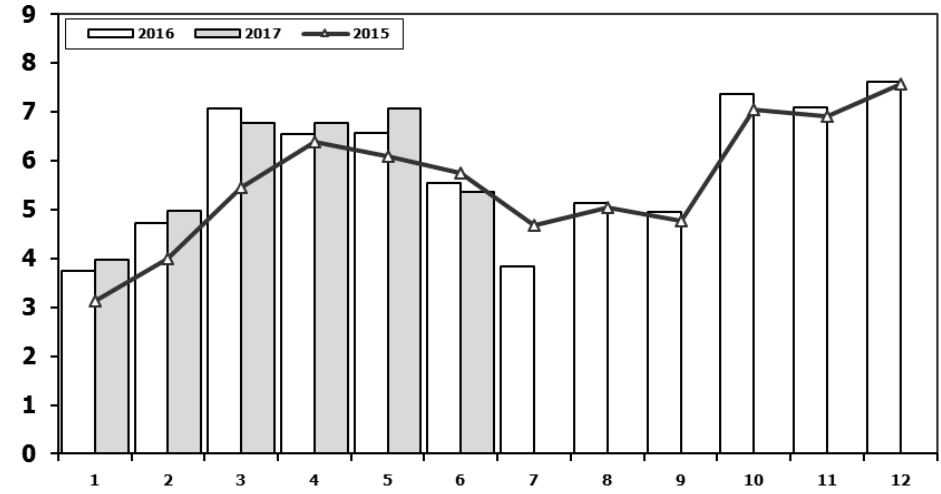
Hafif Araç Pazarı (AYA < 3.5 Ton)

Light Vehicle Market (GVW < 3.5 Ton)



Traktör Pazarı (x1000)

F.Tractor Market (x1000)



	2007	2008	2009	2010	2011	2012	2013	2014	2015	2016	8 Ay/Mo 2017
Otomobil/P.Cars	357.465	305.998	369.819	509.784	593.519	556.280	664.655	587.331	725.596	756.938	423.198
HTA/LCV	237.297	188.025	187.307	251.129	270.920	221.481	188.723	180.350	242.421	226.782	132.793
TOTAL	594.762	494.023	557.126	760.913	864.439	777.761	853.378	767.681	968.017	983.720	555.991
HTA/LCV (%)	40	38	34	33	31	28	22	23	25	23	24

	1	2	3	4	5	6	7	8	9	10	11	12	6 Ay/Mo	Total
2007	2.816	2.244	3.053	2.657	3.188	3.141	2.497	2.381	3.025	2.755	3.549	3.097	17.099	34.403
2008	2.770	1.855	3.395	3.081	2.769	2.400	2.232	2.485	1.856	1.773	1.305	1.101	16.270	27.022
2009	717	572	688	1.070	1.297	1.256	1.054	1.183	1.117	1.356	1.304	2.144	5.600	13.758
2010	1.111	1.991	2.330	3.039	2.567	2.638	1.965	3.019	2.806	4.424	3.978	6.168	13.676	36.036
2011	2.975	5.242	5.927	5.358	6.016	6.335	4.534	4.051	4.140	5.828	4.943	4.992	31.853	60.341
2012	2.362	1.983	4.348	6.579	6.273	4.569	3.837	3.158	3.618	4.027	4.807	4.757	26.114	50.318
2013	2.161	2.432	4.005	4.585	5.616	3.136	4.574	3.408	4.935	4.762	5.781	6.891	21.935	52.286
2014	2.169	3.512	4.476	4.905	5.094	5.028	4.233	4.920	5.619	5.743	6.250	7.409	25.184	59.358
2015	3.124	3.984	5.460	6.383	6.078	5.748	4.677	5.044	4.765	7.049	6.898	7.564	30.777	66.774
2016	3.739	4.731	7.067	6.546	6.575	5.543	3.833	5.134	4.945	7.372	7.090	7.603	34.201	70.178
2017	3.974	4.964	6.773	6.780	7.057	5.356							34.904	34.904

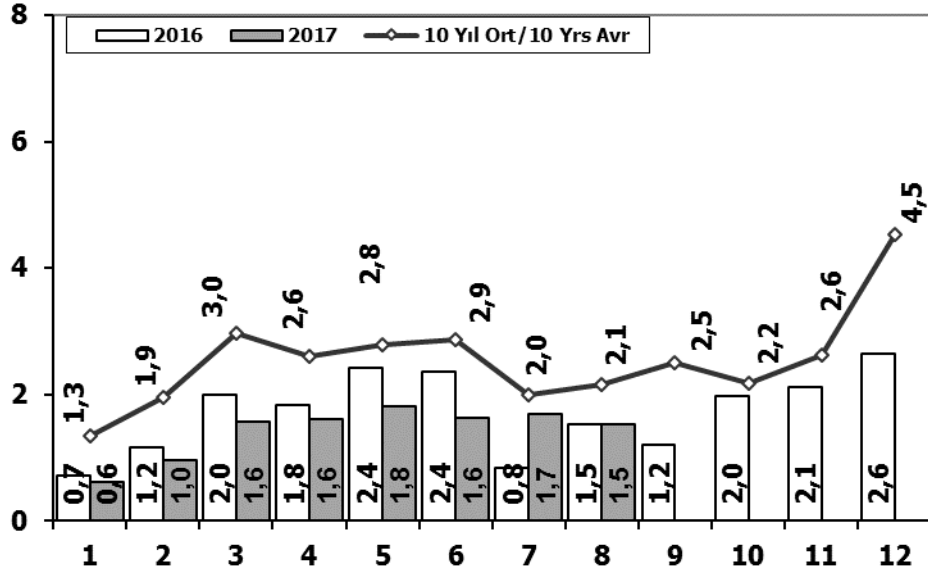
Kaynak: TÜİK trafik kayıtları.

Rakamlar, son iki model yılına ait traktör tescillerinden oluşmaktadır.

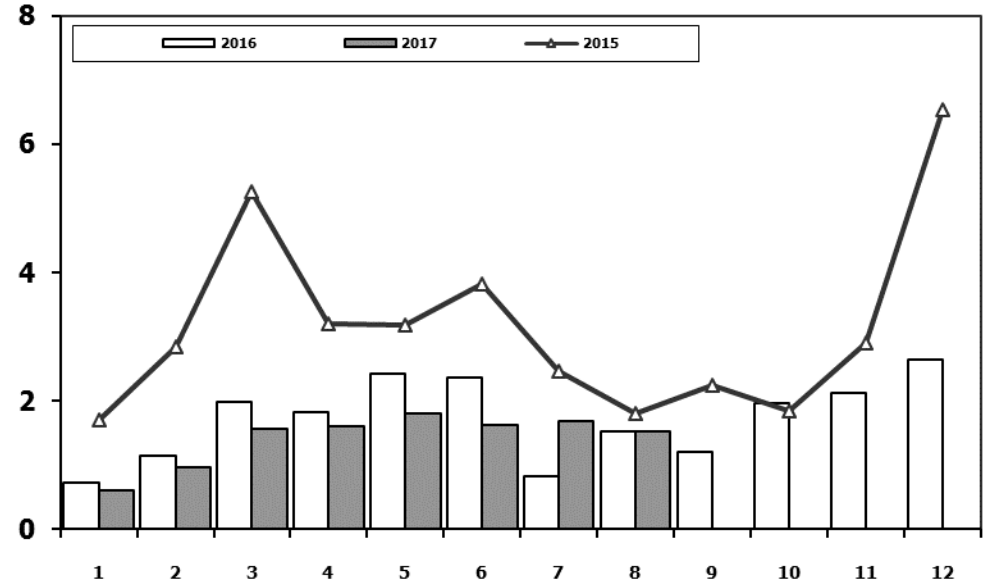
Source: Turkish Statistical Institute – Traffic registrations

Data represents the last two model year's farm tractors registration figures

Kamyon Pazarının Analizi (x1000) AYA > 5 Ton Truck Market Analysis (x1000) GVW > 5 Ton

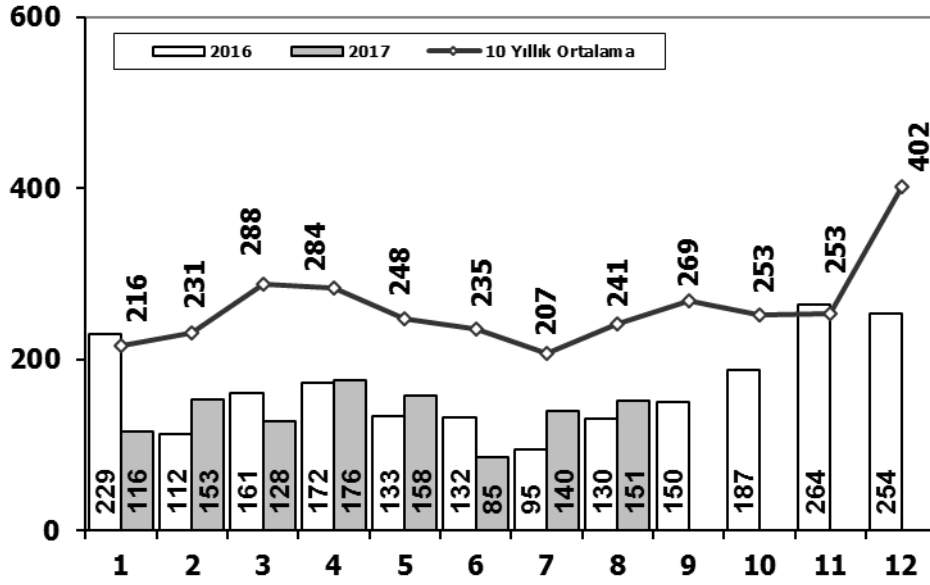


Kamyon Pazarı (x1000) AYA > 5 Ton Truck Market (x1000) GVW > 5 Ton

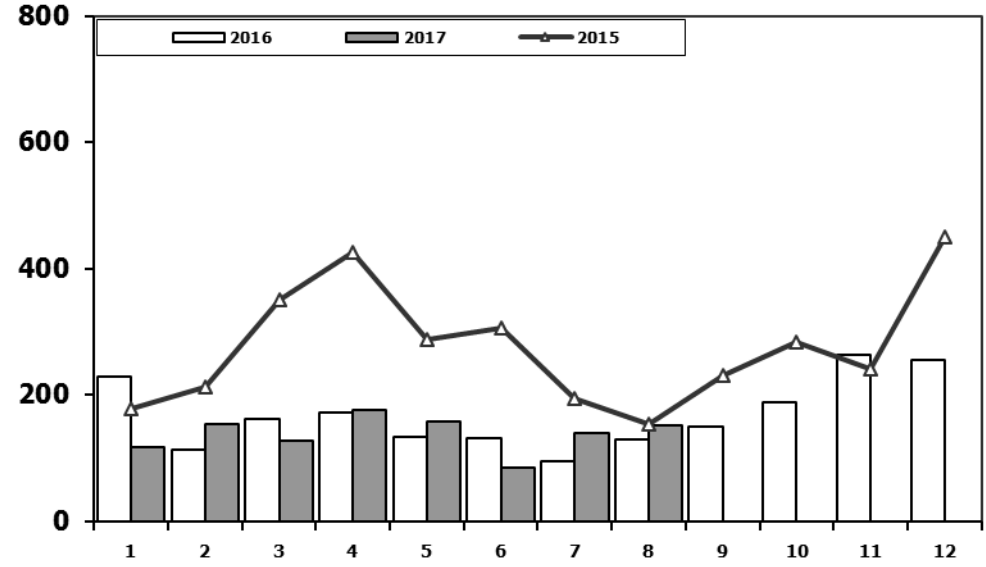


Aylar / Months	10 Yil Ort. 10 Yrs Avr. (x1000)	2017 (x1000)	%	1	2	3	4	5	6	7	8	9	10	11	12	8 Ay/Mo	Total	
				2007	1.554	2.055	3.065	2.940	2.865	2.613	2.372	3.145	2.988	2.886	3.258	4.444	20.609	34.185
				2008	1.797	2.309	2.621	2.578	2.459	2.526	2.067	2.377	2.390	1.790	1.512	1.834	18.734	26.260
				2009	771	759	1.034	1.342	1.355	1.651	1.156	1.205	1.780	866	981	2.015	9.273	14.915
				2010	777	968	1.772	1.807	1.966	2.205	2.093	2.446	2.444	3.071	3.136	5.677	14.034	28.362
				2011	2.552	3.292	4.418	3.754	3.803	3.749	1.996	2.478	3.081	2.774	3.108	5.787	26.042	40.792
				2012	1.375	2.159	3.595	2.697	3.321	3.250	2.450	2.277	2.991	2.244	3.006	5.000	21.124	34.365
				2013	1.077	1.931	3.127	2.720	3.145	2.951	2.411	1.845	2.554	1.801	3.173	5.025	19.207	31.760
				2014	1.117	1.949	2.818	3.092	3.405	3.438	2.083	2.390	3.281	2.494	3.028	6.313	20.292	35.408
				2015	1.705	2.841	5.270	3.208	3.190	3.824	2.463	1.798	2.244	1.848	2.902	6.540	24.299	37.833
				2016	718	1.154	1.984	1.835	2.420	2.358	830	1.529	1.204	1.962	2.123	2.640	12.828	20.757
				2017	607	964	1.570	1.611	1.807	1.621	1.689	1.529					11.398	11.398

Midibüs Pazarının Analizi (7-9 mt / 25-35 Kişilik) Midibus Market Analysis (7-9 mt / 25-35 Passengers)



Midibüs Pazarı (7-9 mt / 25-35 Kişilik Midibüs) Midibus Market (7-9 mt / 25-35 Passengers)

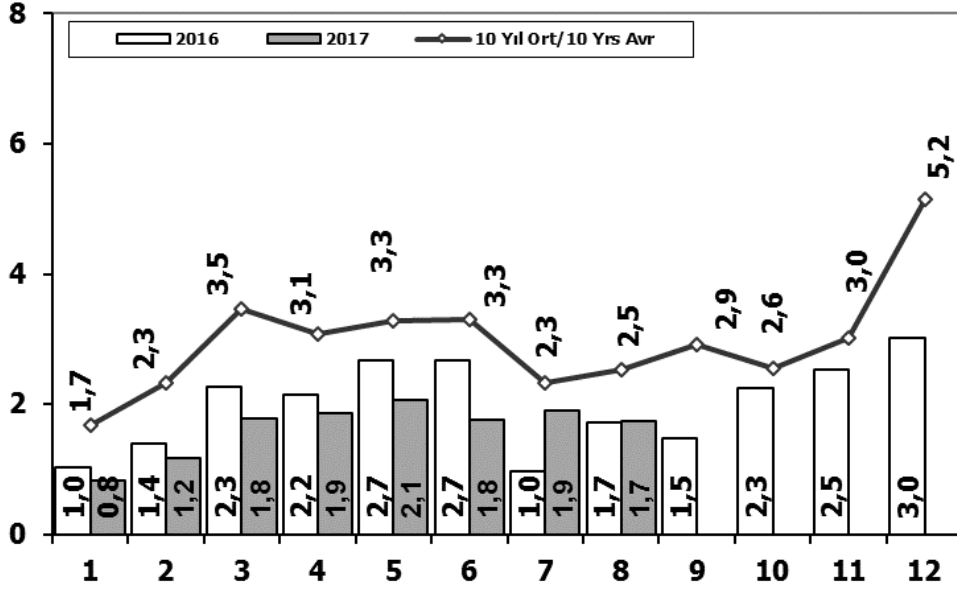


Aylar / Months	10 Yıl Ort. / 10 Yrs Avr.	2017	%
1	216	116	-46
2	231	153	-34
3	288	128	-56
4	284	176	-38
5	248	158	-36
6	235	85	-64
7	207	140	-32
8	241	151	-37
Total	1.950	1.107	-43

	1	2	3	4	5	6	7	8	9	10	11	12	8 Ay/Mo	Total
2007	207	272	404	238	302	283	164	365	399	279	283	465	2.235	3.661
2008	391	476	436	512	419	331	368	380	341	352	246	270	3.313	4.522
2009	154	124	160	220	174	198	160	175	168	143	206	323	1.365	2.205
2010	155	131	185	167	140	138	129	246	236	206	202	437	1.291	2.372
2011	138	195	294	316	280	258	211	305	301	276	260	270	1.997	3.104
2012	179	257	277	229	257	239	216	249	325	269	189	398	1.903	3.084
2013	191	268	289	276	283	241	367	235	305	392	415	697	2.150	3.959
2014	335	265	326	280	206	223	161	174	229	140	226	454	1.970	3.019
2015	177	213	350	425	288	306	195	154	231	283	240	450	2.108	3.312
2016	229	112	161	172	133	132	95	130	150	187	264	254	1.164	2.019
2017	116	153	128	176	158	85	140	151					1.107	1.107

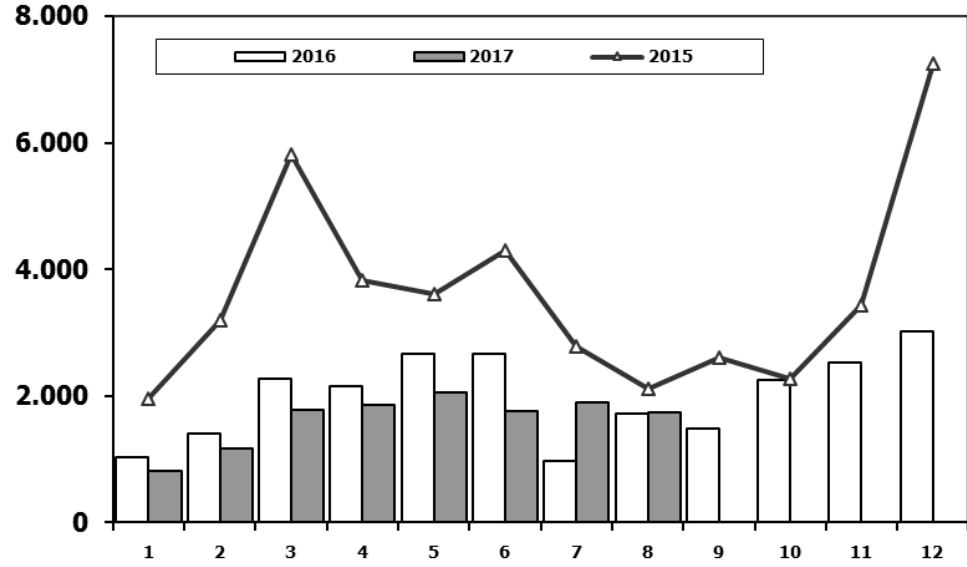
Ağır Ticari Araç Pazarının Analizi (x1000)

HCV Market Analysis (x1000)



Ağır Ticari Araç Pazarı (x1000)

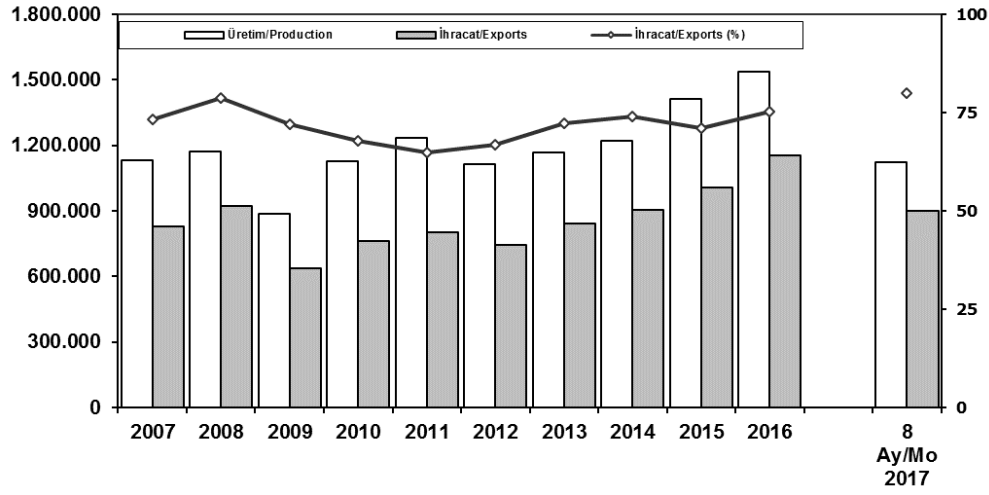
HCV Market (x1000)



Aylar / Months	10 Yıl Ort. 10 Yrs Avr. (x1000)	2017 (x1000)	%	1	2	3	4	5	6	7	8	9	10	11	12	8 Ay/Mo	Total
				1.833	2.518	3.598	3.267	3.317	2.987	2.627	3.613	3.497	3.333	3.704	5.150	23.760	39.444
				2.265	2.870	3.165	3.266	3.029	3.069	2.536	2.922	2.897	2.263	1.899	2.340	23.122	32.521
1	1,7	0,8	-50,7	1.025	1.104	1.420	1.786	1.696	2.035	1.401	1.483	2.006	1.084	1.240	2.463	11.950	18.743
2	2,3	1,2	-49,6	1.955	1.141	2.059	2.133	2.251	2.494	2.373	2.881	2.787	3.376	3.444	6.365	16.287	32.259
3	3,5	1,8	-48,6	2.766	3.685	4.930	4.376	4.447	4.290	2.320	2.972	3.514	3.219	3.538	6.371	29.786	46.428
4	3,1	1,9	-39,5	1.674	2.503	4.073	3.065	3.957	3.714	2.818	2.700	3.568	2.739	3.335	5.713	24.504	39.859
5	3,3	2,1	-37,2	1.617	2.624	3.914	3.440	3.953	3.675	3.130	2.340	3.074	2.385	3.716	5.878	24.693	39.746
6	3,3	1,8	-46,8	1.555	2.287	3.383	3.461	3.788	3.789	2.299	2.640	3.649	2.686	3.316	6.952	23.202	39.805
7	2,3	1,9	-18,7	1.961	3.202	5.819	3.829	3.603	4.305	2.789	2.106	2.597	2.265	3.442	7.259	27.614	43.177
8	2,5	1,7	-31,3	1.027	1.398	2.266	2.154	2.672	2.663	972	1.713	1.475	2.251	2.530	3.016	14.865	24.137
Total	22,0	13,1	-40,5	823	1.176	1.779	1.861	2.054	1.758	1.892	1.742					13.085	13.085

İhracat/Üretim (2007-2017) (Traktör dahil)

Exports/Production (2007-2017) (Including F.Tractor)



Taşıt Araçları İhracatı (2015-2017)

Motor Vehicle Exports (2015-2017)

SEKTÖR/SECTOR	2015	2016	2016	2017	2017/2016 (%)
			8 Ay-8 Mo		
OTOMOBİL / P.Cars	604.683	745.709	440.197	625.010	42
TİCARİ ARAÇLAR / CV	387.652	395.673	265.304	264.646	0
* Kamyonet/Pick-Up	341.834	347.949	237.024	224.421	-5
* Minibüs/Minibus	38.255	34.790	19.837	30.234	52
* Kamyon/Truck	1.408	5.521	3.482	4.896	41
* Midibüs/Midibus	447	915	619	396	-36
* Otobüs/Bus	5.708	6.498	4.342	4.699	8
TAŞIT ARAÇLARI /MV TOTAL	992.335	1.141.382	705.501	889.656	26
TRAKTÖR/F.TRACTOR	14.932	13.651	9.505	9.090	-4
TOTAL	1.007.267	1.155.033	715.006	898.746	26

	2007	2008	2009	2010	2011	2012	2013	2014	2015	2016	8 Ay/Mo 2017
Üretim/Production	1.132.951	1.171.917	884.466	1.124.982	1.234.637	1.115.233	1.166.043	1.218.848	1.410.034	1.536.673	1.123.419
İhracat/Exports	829.879	920.763	637.855	763.670	801.112	745.354	843.467	902.194	1.007.267	1.155.033	898.746
İhracat/Exports (%)	73	79	72	68	65	67	72	74	71	75	80

Otomotiv Ana ve Yan Sanayii İhracatı (ABD \$)

CBU and CKD Exports - \$

Sektör / Sector	2013	2014	2015	2016	2016	2017	2017/2016 (%)
					Ocak-Ağustos / January-August		
Yan Sanayi İhracatı/Total Component Exports	9.065.017.539	9.504.013.791	8.641.977.425	8.947.915.672	5.956.849.341	6.344.258.585	7%
İç ve Dış Lastik / Tyres	1.130.005.891,78	1.126.709.610,14	960.550.807	978.284.060	653.880.736	737.934.853	13%
Emniyet Camı / Safety Glasses	135.230.309,67	143.208.298,99	124.564.841	119.569.736	80.425.633	88.312.229	10%
Motor (Engine)	319.294.885,46	171.893.752,32	221.897.271	370.561.589	232.895.473	291.605.443	25%
Akümülatör / Batteries	306.451.449,47	289.101.198,21	220.462.827	224.590.660	127.143.609	166.260.852	31%
Diğer Aksam ve Parça / Spare Parts&Components	7.174.035.002,35	7.773.100.931,83	7.114.501.679	7.254.909.627	4.862.503.890	5.060.145.209	4%
Ana Sanayi İhracatı/Total Vehicle Exports	12.491.591.365	13.259.499.977	12.977.346.859	15.302.074.705	9.425.954.818	12.568.137.017	33%
Otobüs / Bus	937.790.962,87	985.983.007,01	1.023.556.746	1.190.475.986	802.452.863	858.836.101	7%
Midibüs-Minibüs / Minibus- Minibus	147.769.644,17	97.685.509,12	130.195.838	238.911.957	143.889.447	156.243.634	9%
Otomobil (P. Cars)	6.855.475.589,83	7.258.361.005,24	6.881.867.274	8.336.946.503	4.763.214.974	7.794.556.743	64%
Kamyon-Kamyonet/HCV-LCV	3.918.798.755,31	4.201.760.813,55	4.264.018.829	4.616.562.139	3.082.322.568	3.102.805.738	1%
Römork ve Yarı Römork/Trailer-Semi Trailer	218.385.731,69	252.354.014,20	252.397.167	265.323.711	200.611.501	151.039.664	-25%
Çekici/Truck-Tractor	77.907.406,95	38.396.524,81	48.108.959	316.355.575	207.044.643	289.901.323	40%
Tarım Traktörü/Farm Tractor	335.463.274,61	424.959.103,39	377.202.046	337.498.834	226.418.822	214.753.815	-5%
Toplam/Total	21.556.608.904	22.763.513.769	21.619.324.284	24.249.990.377	15.382.804.159	18.912.395.603	23%

Kaynak: Uludağ İhracatçı Birlikleri . UİB tarafından OSD için özel olarak analiz edilen Otomotiv İhracatı kapsamında; UİB Türkiye Genel Otomotiv Endüstrisi sınıflandırmasına kıyasla "Römork ve Yarı Römork", "Tarım Traktörü" verileri dahil edilmekte; "Kullanılmış Araçlar", "İki Tekerlekli Taşıtlar", "Demiryolu Taşıtları" hariç tutulmaktadır.

Source: Uludağ Exporters Association - Special Analyze for OSD

Compared to Turkish General Automotive Industry classification, this special analyze includes; farms tractors, trailers and semi-trailers, does not include; used vehicles, two-wheeled vehicles and railway vehicles.

Sektör Bazında İhracat (1000 \$)

Exports on Sectorial Basis

SEKTÖRLER (1.000 \$)	AĞUSTOS				OCAK - AĞUSTOS				SON 12 AYLIK			
	2016	2017	Değişim ('17/'16)	Pay(17)	2016	2017	Değişim ('17/'16)	Pay(17)	2016	2017	Değişim ('17/'16)	Pay(17)
Otomotiv Endüstrisi	1.677.700	1.836.087	9,4	14,8	15.136.355	18.624.394	23,0	18,2	22.797.284	27.375.389	20,1	18,0
Hazırgiyim ve Konfeksiyon	1.605.433	1.679.093	4,6	13,5	11.562.782	11.356.827	-1,8	11,1	17.330.725	16.750.358	-3,3	11,0
Kimyevi Maddeler ve Mamulleri	1.208.479	1.461.364	20,9	11,7	9.168.220	10.561.831	15,2	10,3	14.119.716	15.331.009	8,6	10,1
Çelik	880.300	855.628	-2,8	6,9	5.935.247	7.461.653	25,7	7,3	8.883.321	10.599.654	19,3	7,0
Elektrik Elektronik ve Hizmet	854.986	971.511	13,6	7,8	6.430.743	6.527.389	1,5	6,4	10.185.488	10.072.887	-1,1	6,6
Tekstil ve Hammaddeleri	661.290	696.942	5,4	5,6	5.181.765	5.283.194	2,0	5,2	7.869.776	7.968.440	1,3	5,3
Demir ve Demir Dışı Metaller	517.497	608.709	17,6	4,9	3.945.962	4.396.618	11,4	4,3	6.007.235	6.396.523	6,5	4,2
Hububat, Bakliyat, Yağlı Tohumlar ve Mamulleri	540.412	542.496	0,4	4,4	4.095.245	4.192.885	2,4	4,1	6.270.342	6.456.620	3,0	4,3
Makine ve Aksamları	450.227	565.105	25,5	4,5	3.508.701	3.879.421	10,6	3,8	5.392.390	5.670.631	5,2	3,7
Madencilik Ürünleri	344.706	444.900	29,1	3,6	2.375.570	3.109.157	30,9	3,0	3.577.540	4.520.831	26,4	3,0
TOPLAM	11.117.663	12.439.487	11,9	100,0	92.551.226	102.500.467	10,7	100,0	140.805.777	151.765.724	7,8	100,0

Kaynak: TİM

Ağustos ayı ihracat verilerine, "İhracatçı Birlikleri Kaydından Muaf İhracat" verisi dahil değildir.

Source: TİM

Exportation data for August does not include "Exempted Exports from the Exporters' Union Registration".

First 3 Sectors:

- 1- Automotive Industry
- 2- Ready Wear and Confection
- 3- Chemical Articles and Products

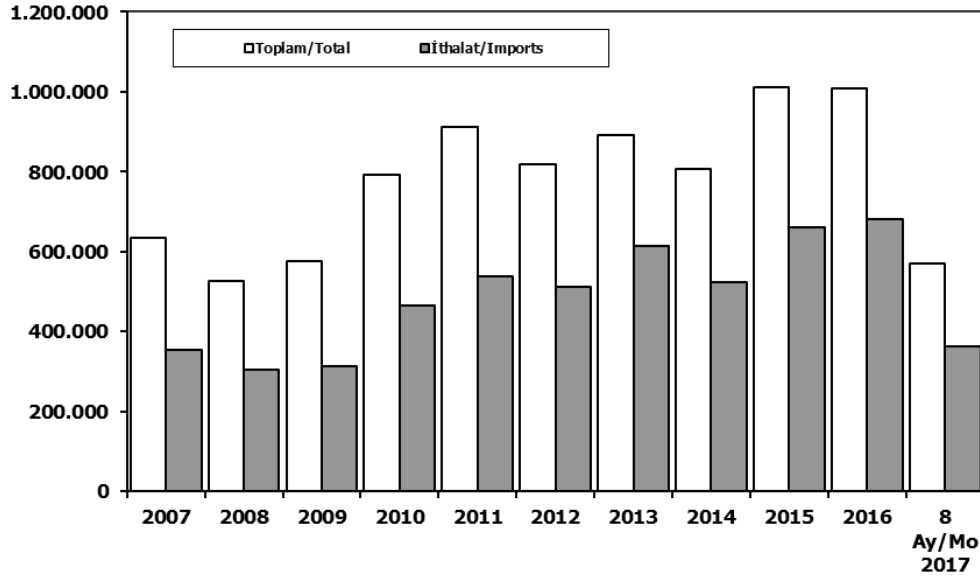
Firma Bazında İhracat (Adet)

Export Of Member Companies (Unit)

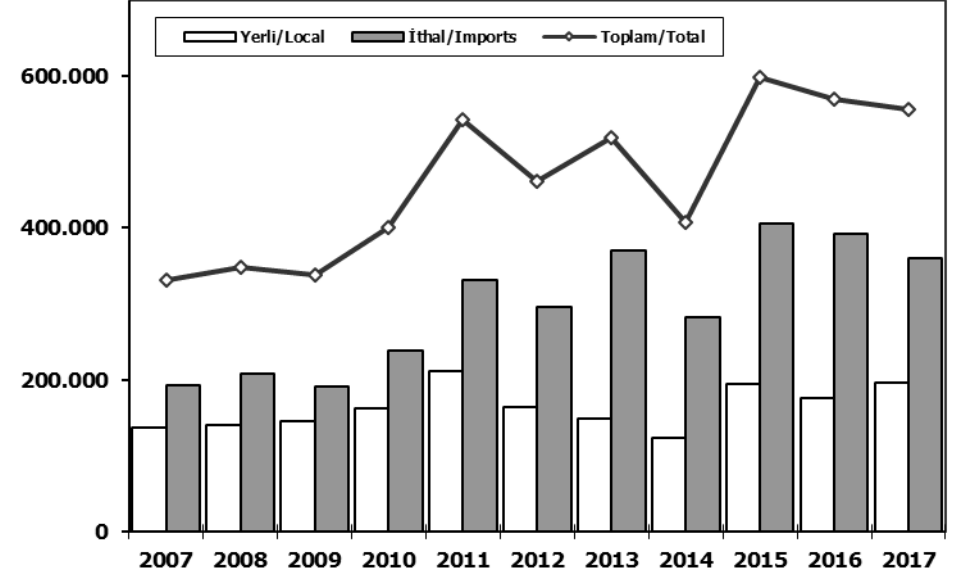
FİRMALAR Companies	2015	2016	Ocak-Ağustos 8 Months	
			2016	2017
OYAK RENAULT	270.299	270.088	172.346	195.556
FORD OTOSAN	252.571	256.706	169.837	189.391
TOFAŞ	173.743	279.444	169.792	186.959
TOYOTA	81.962	109.184	47.223	165.079
HYUNDAI ASSAN	201.276	207.234	134.890	135.682
TÜRK TRAKTÖR	14.122	12.625	8.841	8.262
M. BENZ TÜRK	4.252	8.307	5.625	6.802
HONDA TÜRKİYE	2.220	2.914	1.258	6.032
KARSAN	3.067	3.629	2.026	1.529
MAN TÜRKİYE	1.493	1.717	1.130	1.325
HATTAT TARIM	810	1.026	664	828
TEMSA GLOBAL	441	653	449	549
OTOKAR	720	833	517	441
A.I.O.S.	291	673	408	311
GENEL TOPLAM	1.007.267	1.155.033	715.006	898.746

Kaynak: OSD

Toplam Pazar (Otomobil+T.Araç) Total Market (P.Cars+C.V)



Hafif Araçlar Pazarı (2007-2017 Ocak-Ağustos) LV Market (2007-2017 January-August)

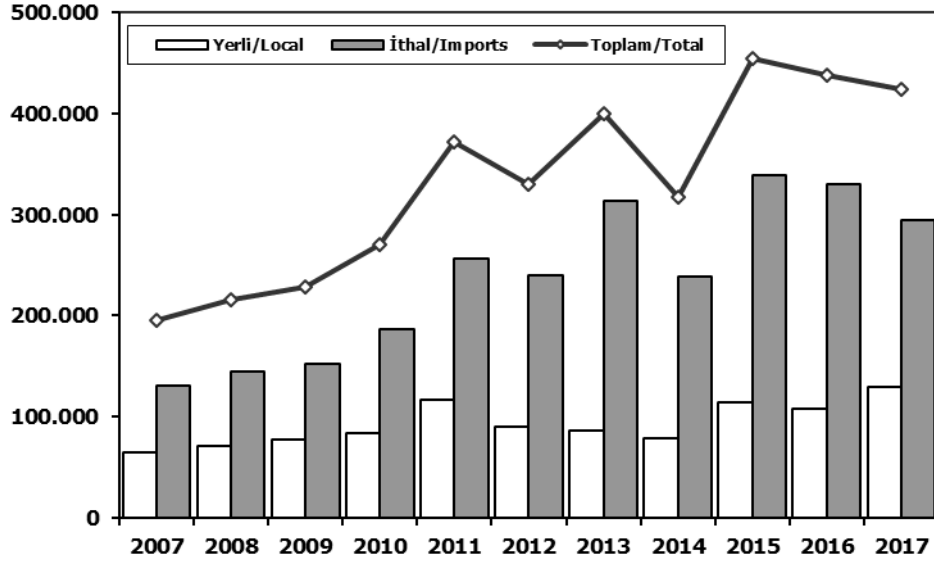


	2007	2008	2009	2010	2011	2012	2013	2014	2015	2016	8 Ay/Mo 2016	8 Ay/Mo 2017
Toplam/Total	634.206	526.544	575.869	793.172	910.867	817.620	893.124	807.486	1.011.194	1.007.857	583.771	569.076
İthalat/Imports	355.752	306.087	313.921	465.408	538.532	511.694	615.609	522.842	660.045	681.308	397.389	363.951
İthalat/Imports (%)	56	58	55	59	59	63	69	65	65	68	68	64

	2007	2008	2009	2010	2011	2012	2013	2014	2015	2016	2017
Yerli/Local	137.841	140.350	145.795	162.450	212.097	164.984	148.289	123.875	194.079	176.515	196.525
İthal/Imports	193.376	208.526	192.016	238.914	331.225	296.100	370.093	283.092	404.884	392.391	359.466
Toplam/Total	331.217	348.876	337.811	401.364	543.322	461.084	518.382	406.967	598.963	568.906	555.991
İthalat/Imports (%)	58	60	57	60	61	64	71	70	68	69	65

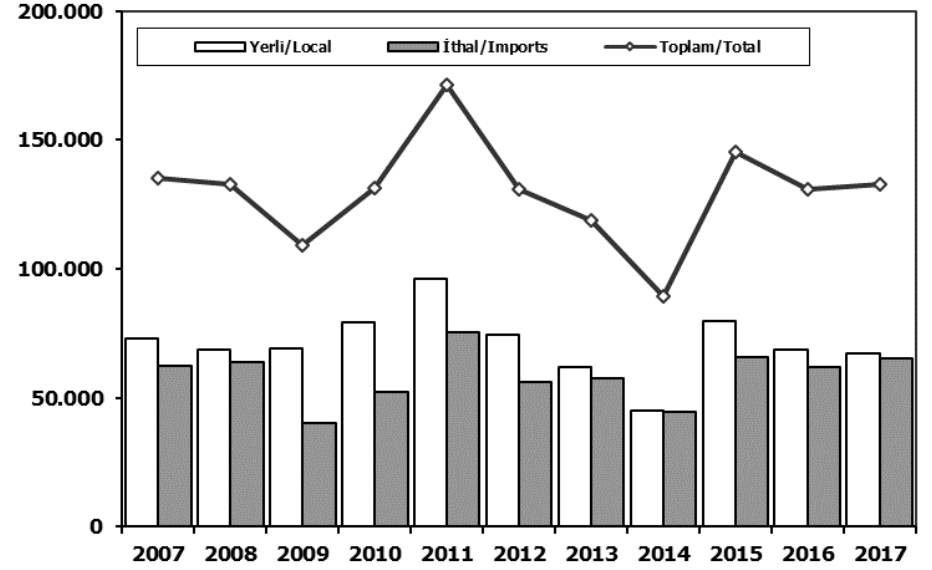
Otomobil Pazarı (2007-2017 Ocak-Ağustos)

P.Cars Market (2007-2017 January-August)



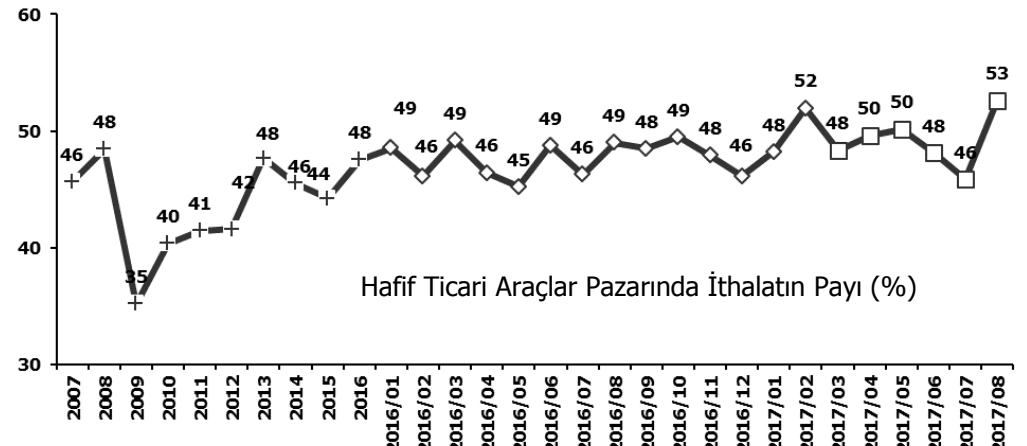
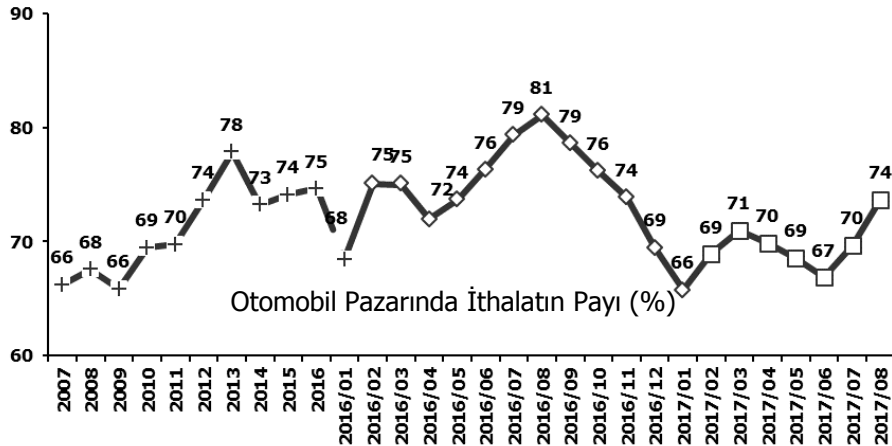
Hafif Ticari Araçlar Pazarı (2007-2017 Ocak-Ağustos)

Light Commercial Vehicle Market (2007-2017 January-August)



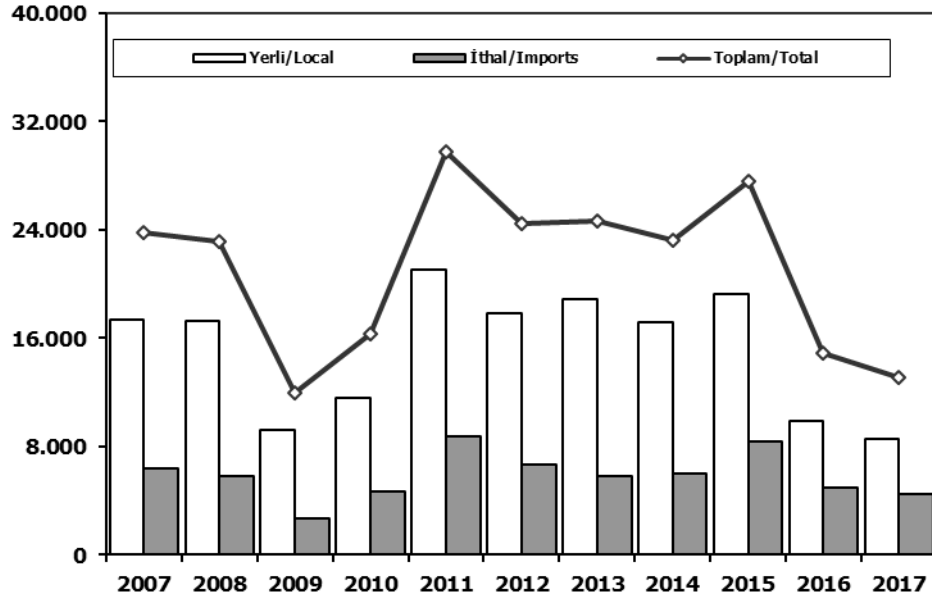
	2007	2008	2009	2010	2011	2012	2013	2014	2015	2016	2017
Yerli/Local	64.648	71.504	76.909	83.416	116.121	90.473	86.633	78.863	114.439	107.723	129.161
İthal/Imports	131.198	144.573	151.961	186.510	256.018	239.784	312.796	238.643	339.378	330.302	294.037
Toplam/Total	195.846	216.077	228.870	269.926	372.139	330.257	399.429	317.506	453.817	438.025	423.198
İthalat/Imports (%)	67	67	66	69	69	73	78	75	75	75	69

	2007	2008	2009	2010	2011	2012	2013	2014	2015	2016	2017
Yerli/Local	73.193	68.846	68.886	79.034	95.976	74.511	61.656	45.012	79.640	68.792	67.364
İthal/Imports	62.178	63.953	40.055	52.404	75.207	56.316	57.297	44.449	65.506	62.089	65.429
Toplam/Total	135.371	132.799	108.941	131.438	171.183	130.827	118.953	89.461	145.146	130.881	132.793
İthalat/Imports (%)	46	48	37	40	44	43	48	50	45	47	49



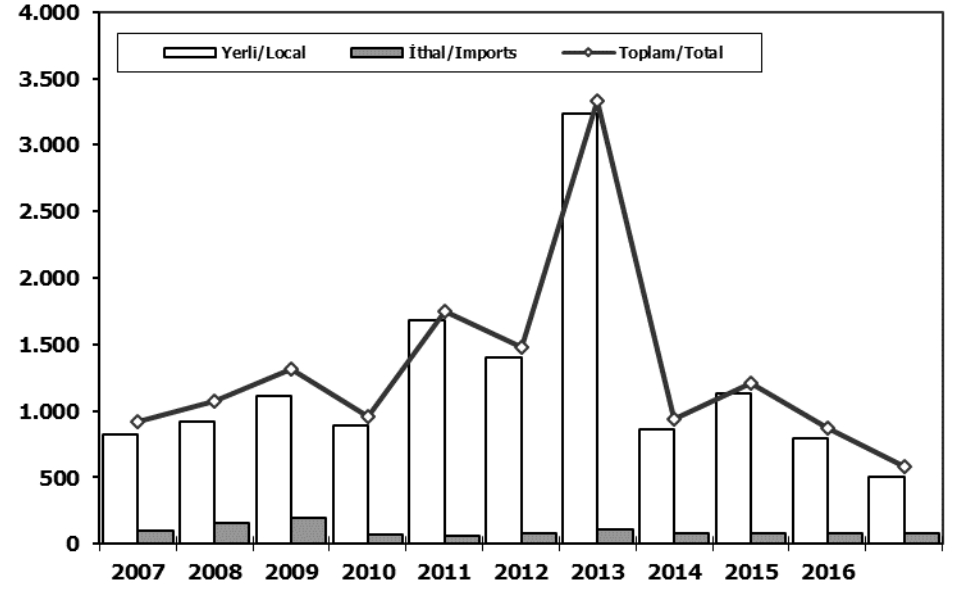
Ağır Ticari Araçlar Pazarı (2007-2017 Ocak-Ağustos)

HCV Market (2007-2017 January-August)



Otobüs Pazarı (2007-2017 Ocak-Ağustos)

Bus Market (2007-2017 January-August)

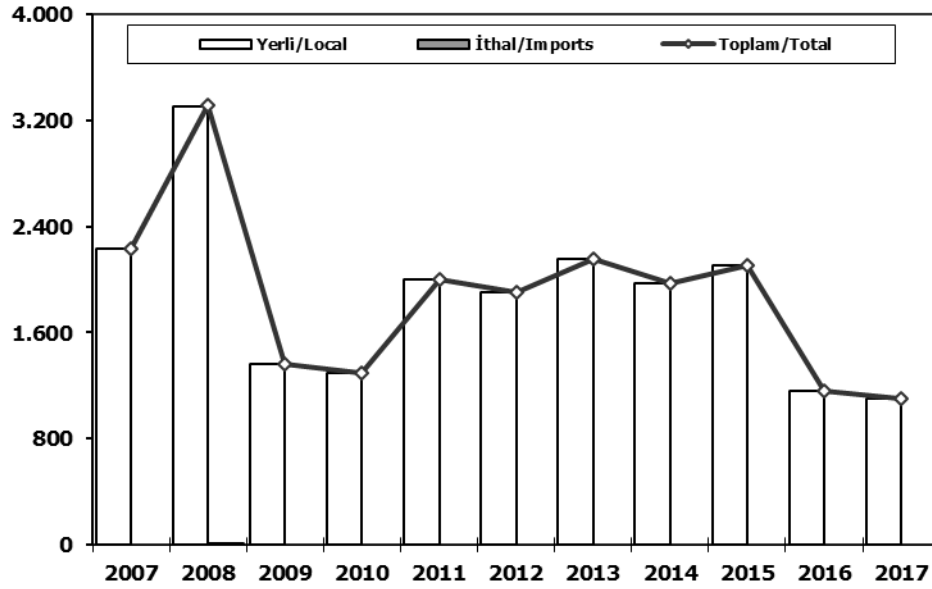


	2007	2008	2009	2010	2011	2012	2013	2014	2015	2016	2017
Yerli/Local	17.353	17.308	9.246	11.591	21.027	17.853	18.870	17.205	19.265	9.867	8.600
İthal/Imports	6.407	5.814	2.704	4.696	8.759	6.651	5.823	5.997	8.349	4.998	4.485
Toplam/Total	23.760	23.122	11.950	16.287	29.786	24.504	24.693	23.202	27.614	14.865	13.085
İthalat/Imports (%)	27	25	23	29	29	27	24	26	30	34	34

	2007	2008	2009	2010	2011	2012	2013	2014	2015	2016	2017
Yerli/Local	821	915	1.113	892	1.686	1.398	3.231	860	1.127	793	500
İthal/Imports	95	160	199	70	61	79	105	80	80	80	80
Toplam/Total	916	1.075	1.312	962	1.747	1.477	3.336	940	1.207	873	580
İthalat/Imports (%)	10	15	15	7	3	5	3	9	7	9	14

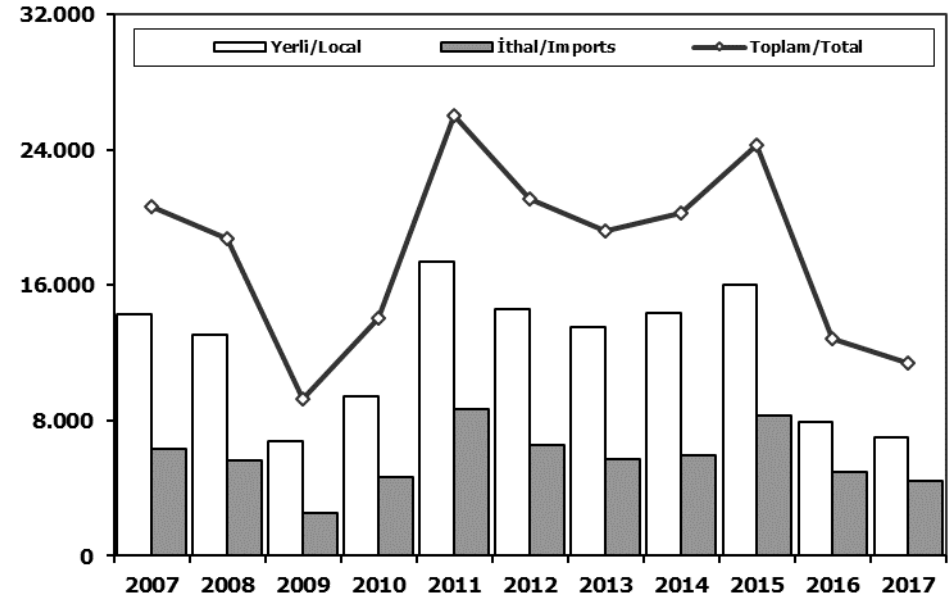
Midibüs Pazarı (2007-2017 Ocak-Ağustos) (7-9 mt / 25-35 Kişilik)

Midibus Market (2007-2017 January-August) (7-9 mt / 25-35 Passengers)



Kamyon Pazarı (2007-2017 Ocak-Ağustos)

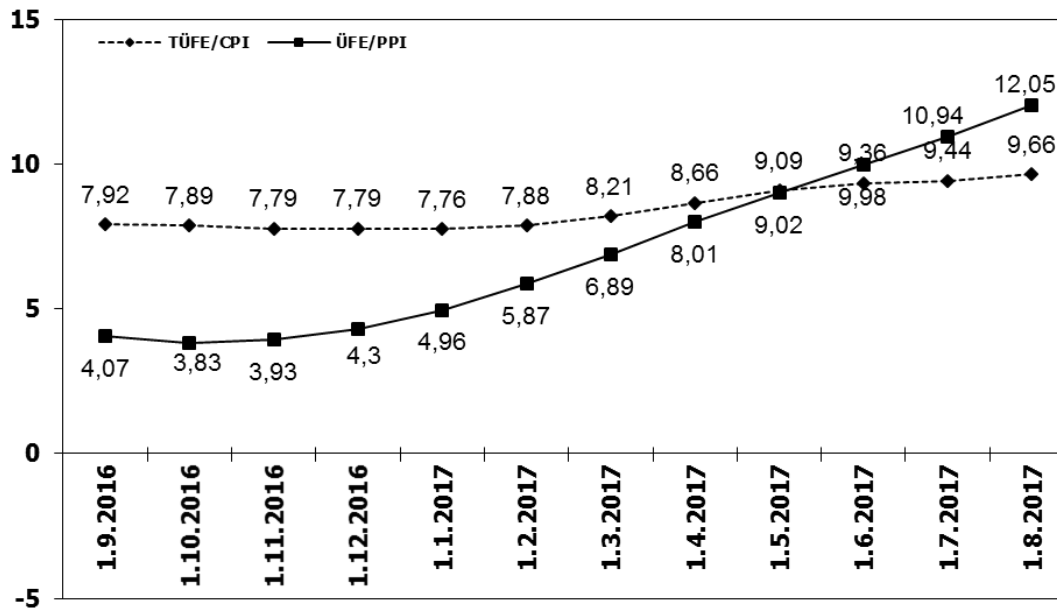
Truck Market (2007-2017 January-August)



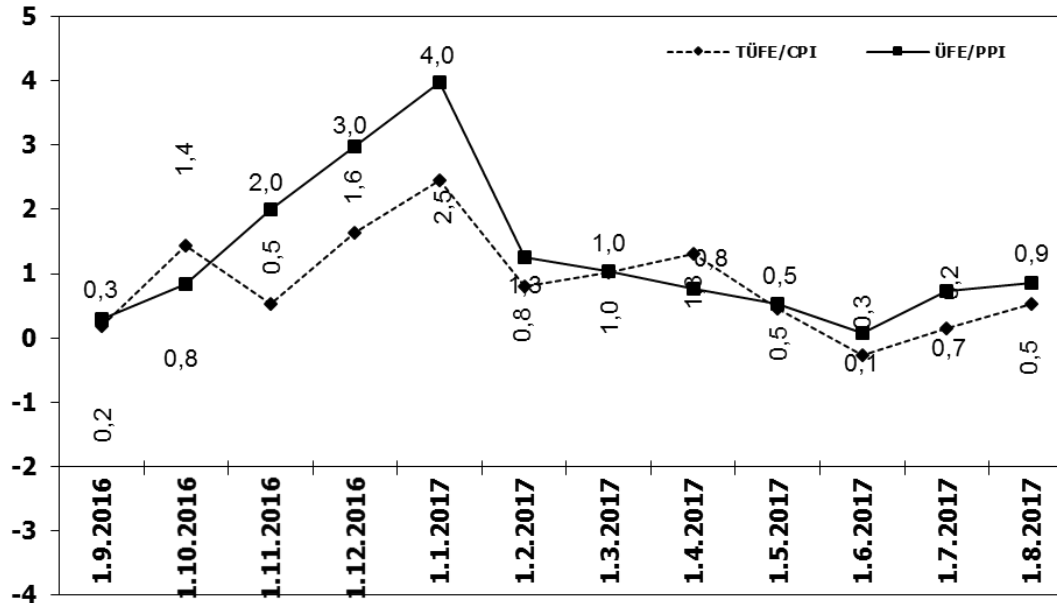
	2007	2008	2009	2010	2011	2012	2013	2014	2015	2016	2017
Yerli/Local	2.235	3.302	1.365	1.291	1.997	1.903	2.150	1.970	2.108	1.164	1.107
İthal/Imports	0	11	0	0	0	0	0	0	0	0	0
Toplam/Total	2.235	3.313	1.365	1.291	1.997	1.903	2.150	1.970	2.108	1.164	1.107
İthalat/Imports (%)	0	0	0	0	0	0	0	0	0	0	0

	2007	2008	2009	2010	2011	2012	2013	2014	2015	2016	2017
Yerli/Local	14.297	13.091	6.768	9.408	17.344	14.552	13.489	14.375	16.030	7.910	6.993
İthal/Imports	6.312	5.643	2.505	4.626	8.698	6.572	5.718	5.917	8.269	4.918	4.405
Toplam/Total	20.609	18.734	9.273	14.034	26.042	21.124	19.207	20.292	24.299	12.828	11.398
İthalat/Imports (%)	31	30	27	33	33	31	30	29	34	38	39

TÜFE ve ÜFE'nin 12 Aylık Ort. Değişimi (%) CPI and PPI 12 Months Avr. Changes (%)



TÜFE ve ÜFE'nin Aylık Değişimi (%) CPI and PPI Monthly Changes (%)



OTOMOTİV SANAYİİ DIŞ SATIŞLARI - 2017
AUTOMOTIVE INDUSTRY EXPORTS SALES - 2017

TIPLER-Types	Ocak January	Şubat February	Mart March	Nisan April	Mayıs May	Haziran June	Temmuz July	Ağustos August	Eylül September	Ekim October	Kasım November	Aralık December	TOPLAM Total
Otomobil	76.493	81.990	96.313	82.590	87.536	79.544	75.618	44.926	0	0	0	0	625.010
OTOMOBİL-Pass. Car	76.493	81.990	96.313	82.590	87.536	79.544	75.618	44.926	0	0	0	0	625.010
TİCARİ ARAÇ	26.878	34.073	39.652	34.641	38.152	36.425	38.452	16.373	0	0	0	0	264.646
* KAMYONET-Pick Up	23.417	29.632	33.496	29.383	32.321	30.570	32.295	13.307	0	0	0	0	224.421
* KAMYON-Truck	25	538	885	664	813	814	785	372	0	0	0	0	4.896
* MİDİBÜS-Midibus	18	59	46	33	52	99	30	59	0	0	0	0	396
* MİNİBÜS-Minibus	3.045	3.220	4.570	3.933	4.294	4.358	4.712	2.102	0	0	0	0	30.234
* OTOBÜS-Bus	373	624	655	628	672	584	630	533	0	0	0	0	4.699
Traktör	989	885	1.409	1.111	1.056	1.174	1.198	1.268	0	0	0	0	9.090
TRAKTÖR-F.Tractor	989	885	1.409	1.111	1.056	1.174	1.198	1.268	0	0	0	0	9.090
TOPLAM-Total	104.360	116.948	137.374	118.342	126.744	117.143	115.268	62.567	0	0	0	0	898.746

Otomobil

FİRMALAR-Companies	Ocak January	Şubat February	Mart March	Nisan April	Mayıs May	Haziran June	Temmuz July	Ağustos August	Eylül September	Ekim October	Kasım November	Aralık December	TOPLAM Total
FORD OTOSAN	1.855	1.431	1.849	1.329	1.513	1.925	1.287	2	0	0	0	0	11.191
HONDA TÜRKİYE	490	196	1.074	795	1.101	950	654	772	0	0	0	0	6.032
HYUNDAI ASSAN	15.119	17.105	19.168	18.719	19.640	17.231	13.500	15.200	0	0	0	0	135.682
OYAK RENAULT	22.534	25.360	31.383	27.062	26.589	24.673	25.234	12.721	0	0	0	0	195.556
TOFAŞ	14.373	18.619	18.692	14.241	15.375	12.766	13.319	4.085	0	0	0	0	111.470
TOYOTA	22.122	19.279	24.147	20.444	23.318	21.999	21.624	12.146	0	0	0	0	165.079
TOPLAM-Total	76.493	81.990	96.313	82.590	87.536	79.544	75.618	44.926	0	0	0	0	625.010

Kamyonet

FİRMALAR-Companies	Ocak January	Şubat February	Mart March	Nisan April	Mayıs May	Haziran June	Temmuz July	Ağustos August	Eylül September	Ekim October	Kasım November	Aralık December	TOPLAM Total
FORD OTOSAN	18.002	18.340	23.102	19.638	20.299	18.945	21.006	8.116	0	0	0	0	147.448
KARŞAN	0	117	91	232	331	254	181	196	0	0	0	0	1.402
OTOKAR	0	0	46	0	6	30	0	0	0	0	0	0	82
TOFAŞ	5.415	11.175	10.257	9.513	11.685	11.341	11.108	4.995	0	0	0	0	75.489
TOPLAM-Total	23.417	29.632	33.496	29.383	32.321	30.570	32.295	13.307	0	0	0	0	224.421

Minibüs

FİRMALAR-Companies	Ocak January	Şubat February	Mart March	Nisan April	Mayıs May	Haziran June	Temmuz July	Ağustos August	Eylül September	Ekim October	Kasım November	Aralık December	TOPLAM Total
FORD OTOSAN	3.044	3.220	4.547	3.929	4.292	4.345	4.708	2.098	0	0	0	0	30.183
KARŞAN	1	0	23	4	2	13	4	4	0	0	0	0	51
TOPLAM-Total	3.045	3.220	4.570	3.933	4.294	4.358	4.712	2.102	0	0	0	0	30.234

Kamyon

FİRMALAR-Companies	Ocak January	Şubat February	Mart March	Nisan April	Mayıs May	Haziran June	Temmuz July	Ağustos August	Eylül September	Ekim October	Kasım November	Aralık December	TOPLAM Total
A.I.O.S.	0	6	0	0	0	0	0	0	0	0	0	0	6
FORD OTOSAN	25	65	71	87	74	63	94	90	0	0	0	0	569
M. BENZ TÜRK	0	467	814	577	739	751	691	282	0	0	0	0	4.321
TOPLAM-Total	25	538	885	664	813	814	785	372	0	0	0	0	4.896

Midibüs

FİRMALAR-Companies	Ocak January	Şubat February	Mart March	Nisan April	Mayıs May	Haziran June	Temmuz July	Ağustos August	Eylül September	Ekim October	Kasım November	Aralık December	TOPLAM Total
A.I.O.S.	4	39	19	9	44	43	3	22	0	0	0	0	183
KARŞAN	1	0	0	0	0	8	10	11	0	0	0	0	30
OTOKAR	13	18	16	16	4	17	13	23	0	0	0	0	120
TEMSA GLOBAL	0	2	11	8	4	31	4	3	0	0	0	0	63
TOPLAM-Total	18	59	46	33	52	99	30	59	0	0	0	0	396

Otobüs

FİRMALAR-Companies	Ocak January	Şubat February	Mart March	Nisan April	Mayıs May	Haziran June	Temmuz July	Ağustos August	Eylül September	Ekim October	Kasım November	Aralık December	TOPLAM Total
A.I.O.S.	0	13	46	8	7	8	14	26	0	0	0	0	122
KARŞAN	0	0	1	0	0	0	20	0	25	0	0	0	46
M. BENZ TÜRK	191	382	359	318	373	312	331	215	0	0	0	0	2.481
MAN TÜRKİYE	129	199	191	229	176	147	149	105	0	0	0	0	1.325
OTOKAR	41	10	7	15	23	36	60	47	0	0	0	0	239
TEMSA GLOBAL	12	20	51	58	93	61	76	115	0	0	0	0	486
TOPLAM-Total	373	624	655	628	672	584	630	533	0	0	0	0	4.699

Traktör

FİRMALAR-Companies	Ocak January	Şubat February	Mart March	Nisan April	Mayıs May	Haziran June	Temmuz July	Ağustos August	Eylül September	Ekim October	Kasım November	Aralık December	TOPLAM Total
HATTAT TARIM	84	15	173	98	128	77	92	161	0	0	0	0	828
TÜRK TRAKTÖR	905	870	1.236	1.013	928	1.097	1.106	1.107	0	0	0	0	8.262
TOPLAM-Total	989	885	1.409	1.111	1.056	1.174	1.198	1.268	0	0	0	0	9.090

2017 YILI İTHAL OTOMOBİL SATIŞLARI / P.Cars Import 2017

	2016 TOPLAMI 2016 Total	1	2	3	4	5	6	7	8	9	10	11	12	2017 TOPLAMI 2017 Total
VOLKSWAGEN	101.761	3.059	4.903	6.729	6.672	8.131	7.213	7.006	6.957					50.670
OPEL	55.471	1.577	1.652	4.014	3.838	3.654	4.055	4.365	3.564					26.719
DACIA	42.109	1.471	2.303	3.534	3.557	3.356	2.933	3.933	3.467					24.554
RENAULT	42.422	844	1.462	3.148	2.879	3.630	3.230	3.673	3.714					22.580
FORD	33.453	1.175	1.199	2.760	2.902	3.992	3.425	3.067	2.826					21.346
PEUGEOT	25.440	637	1.884	2.139	2.604	2.651	2.799	2.030	2.412					17.156
NISSAN	30.513	1.154	1.519	2.083	2.254	2.835	2.385	2.460	2.429					17.119
HYUNDAI	26.463	1.413	1.393	2.563	2.003	1.904	2.179	1.871	2.299					15.625
MERCEDES-BENZ	32.666	499	1.078	2.308	2.106	2.213	2.313	2.300	2.324					15.141
SKODA	28.876	925	1.225	1.335	2.144	1.655	1.931	2.133	1.937					13.285
AUDI	22.005	625	702	1.287	1.673	2.109	2.177	1.370	1.055					10.998
SEAT	20.637	536	623	1.103	1.583	1.651	2.436	1.789	1.030					10.751
CITROEN	17.041	515	761	1.765	1.654	1.504	1.473	1.339	1.321					10.332
BMW	27.166	570	900	1.346	877	1.814	1.409	1.904	1.285					10.105
KIA	14.398	426	481	630	1.097	1.110	1.003	1.065	920					6.732
TOYOTA	11.513	439	413	439	427	484	707	852	501					4.262
HONDA	8.714	206	255	642	618	660	666	583	510					4.140
VOLVO	4.100	155	213	232	340	400	374	275	340					2.329
SUZUKI	3.931	79	143	260	206	324	296	446	458					2.212
FIAT	3.103	106	187	229	185	178	145	117	184					1.331
JEEP	2.192	111	104	162	184	179	188	198	174					1.300
LAND ROVER	2.108	34	72	104	175	211	176	126	170					1.068
SUBARU	1.584	67	40	195	129	30	216	103	131					911
MAZDA	1.427	54	76	109	100	139	161	117	120					876
MINI	1.688	55	81	82	80	96	130	93	133					750
PORSCHE	827	66	61	61	35	31	62	82	37					435
MITSUBISHI	709	28	43	50	45	24	16	19	25					250
SSANGYONG	507	10	20	32	27	32	66	32	24					243
ALFA ROMEO	634	17	43	59	27	24	24	18	19					231
JAGUAR	481	6	10	23	36	49	23	39	34					220
SMART	192	2	7	20	19	28	8	10	6					100
INFINITI	120	6	12	8	2	16	10	5	13					72
DS	400	9	0	1	13	5	1	38	1					68
LEXUS	64	16	3	6	11	9	2	3	2					52
MASERATI	72	2	7	3	5	2	4	9	6					38
ASTON MARTIN	29	1	2	3	2	2	2	2	1					15
FERRARI	18	0	1	3	1	0	1	0	3					9
BENTLEY	9	1	2	0	1	1	1	0	2					8
LAMBORGHINI	7	0	0	0	1	1	1	1	0					4
CHERY	144	0	0	0	0	0	0	0	0					0
PROTON	51	0	0	0	0	0	0	0	0					0
TOPLAM	565.045	16.896	23.880	39.467	40.512	45.134	44.241	43.473	40.434	0	0	0	0	294.037

2017 YILI İTHAL HAFİF TİCARİ ARAÇ SATIŞLARI / Light Commercial Vehicles Import 2017

	2016 TOPLAMI 2016 Total	1	2	3	4	5	6	7	8	9	10	11	12	2017 TOPLAMI 2017 Total
VOLKSWAGEN	32.772	1.255	1.599	2.121	2.362	2.524	2.218	2.376	2.405					16.860
RENAULT	15.091	519	718	1.327	1.238	1.268	1.098	1.499	1.375					9.042
CITROEN	6.884	438	669	424	807	1.147	1.176	479	682					5.822
PEUGEOT	8.402	157	351	990	739	965	726	885	805					5.618
MERCEDES-BENZ	8.070	343	496	687	742	781	767	814	845					5.475
DACIA	5.422	235	348	523	615	658	650	642	538					4.209
FIAT	5.885	257	448	490	602	405	380	526	677					3.785
TOYOTA	5.645	356	451	489	304	243	211	375	328					2.757
FORD	4.878	250	270	371	212	270	220	228	423					2.244
KIA	3.952	193	240	384	306	386	150	358	209					2.226
HYUNDAI	2.244	134	174	242	308	357	243	224	248					1.930
MITSUBISHI	3.533	173	213	127	209	438	169	281	228					1.838
NISSAN	1.540	167	266	337	258	170	196	195	233					1.822
IVECO	2.175	146	133	250	205	210	152	171	221					1.488
SSANGYONG	254	9	4	21	12	15	51	56	49					217
SUZU	1.055	12	12	9	11	11	8	17	16					96
TATA	9	0	0	0	0	0	0	0	0					0
TOPLAM	107.811	4.644	6.392	8.792	8.930	9.848	8.415	9.126	9.282	0	0	0	0	65.429