



OTOMOTİV SANAYİİ DERNEĐİ  
AUTOMOTIVE MANUFACTURERS ASSOCIATION

# OTOMOTİV SEKTÖRÜ AYLIK DEĐERLENDİRME RAPORU TEMMUZ 2021

AUTOMOTIVE INDUSTRY MONTHLY REPORT  
July 2021

OSD "OICA" Üyesidir © O I C A OSD is a Member of "OICA"

	7 - 2020	7 - 2021	%	1 - 7 / 2020	1 - 7 / 2021	%	8/2019 - 7/2020	8/2020 - 7/2021	%
Otomobil Üretimi/P.Cars Production	77.706	33.529	-56,9	440.103	449.550	2,2	843.810	864.490	2,5
Toplam Üretim/Total Production	118.030	65.418	-44,6	636.759	705.079	10,7	1.229.063	1.366.198	11,2
Otomobil Pazar/P.Cars Market	69.427	36.311	-47,7	273.022	346.636	27,0	488.502	683.723	40,0
Toplam Pazar/Total Market	89.419	49.729	-44,4	351.306	461.730	31,4	623.954	906.574	45,3
Otomobil İthalat/P.Cars Import	41.517	22.831	-45,0	165.754	208.593	25,8	299.188	403.289	34,8
Toplam İthalat/Total Import	48.647	28.570	-41,3	195.251	260.623	33,5	354.181	492.363	39,0
Otomobil İhracat/P.Cars Export	52.088	25.747	-50,6	333.725	322.874	-3,3	669.825	585.765	-12,6
Toplam İhracat/Total Export	78.242	50.781	-35,1	480.418	512.320	6,6	980.942	948.440	-3,3
Otomobil İhracat(\$)/P.Cars Export (\$)	782.473.117,92	569.563.757,75	-27,2	5.026.076.018	5.391.650.258	7,3	9.973.502.173	9.677.662.574	-3,0
Toplam İhracat(\$)/Total Export (\$)*	2.226.200.338,46	2.031.027.506,71	-8,8	13.199.914.460	16.730.738.138	26,8	25.804.745.902	29.473.128.522	14,2

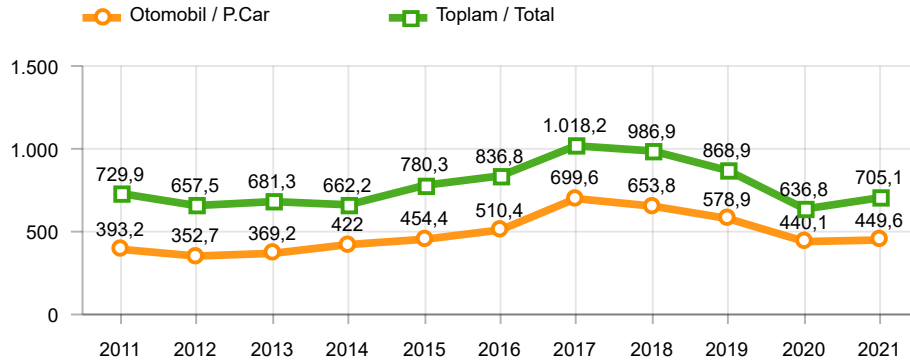
Parametreler/Parameters	7 - 2020	7 - 2021	%	1 - 7 / 2020	1 - 7 / 2021	%	8/2019 - 7/2020	8/2020 - 7/2021	%
ÜFE / PPI	1,0	2,5	-	8,0	25,1	-	6,8	28,5	-
TÜFE / CPI	0,6	1,8	-	6,4	10,4	-	11,5	15,2	-
Sanayi Endeksi / Industry Index	1,0	2,4	-	8,2	25,7	-	6,2	30,8	-
Dolar \$ ** (1 birim)	6,8	8,6	25,7	6,5	8,0	21,8	6,2	7,8	26,4
Euro € ** (1 birim)	7,8	10,2	30,3	7,3	9,6	32,0	6,9	9,4	36,5
Japon Yeni ¥ ** (100 birim)	6,4	7,8	21,8	6,0	7,3	21,4	5,7	7,3	27,7

\*Toplam Sanayi / Total Industry Including Components

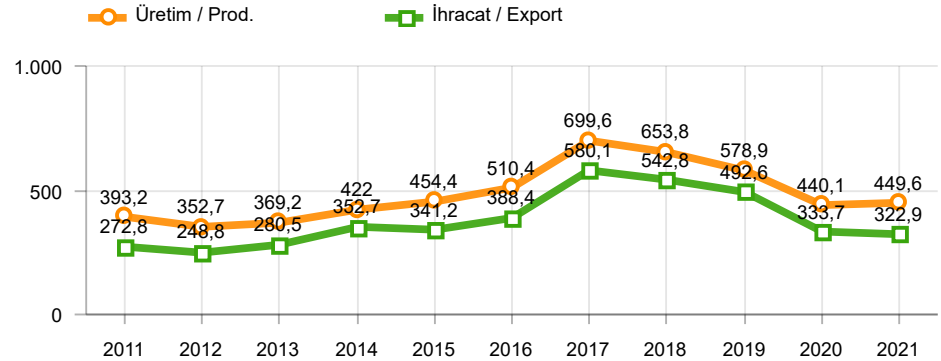
\*\* Ortalama Değerler / Average Values

Araç Tipleri / Types	7 / 2020	7 / 2021	7 % Değişim	1-7 / 2020	1-7 / 2021	1-7 % Değişim
OTOMOBİL / Pass.Car	77.706	33.529	-56,9	440.103	449.550	2,1
<b>OTOMOBİL Toplam / Pass.Car Total</b>	<b>77.706</b>	<b>33.529</b>	<b>-56,9</b>	<b>440.103</b>	<b>449.550</b>	<b>2,1</b>
B.KAMYON / H. Truck	1.981	1.834	-7,4	9.039	17.964	98,7
K.KAMYON / L. Truck	175	246	40,6	777	2.145	176,1
KAMYONET / Pick Up	31.749	25.508	-19,7	154.450	207.976	34,7
OTOBÜS / Bus	738	505	-31,6	4.554	3.118	-31,5
MİNİBÜS / Minibus	5.457	3.659	-32,9	26.694	23.319	-12,6
MİDİBÜS / Midibus	224	137	-38,8	1.142	1.007	-11,8
<b>TİCARİ ARAÇLAR Toplam / Commercial Vehicles Total</b>	<b>40.324</b>	<b>31.889</b>	<b>-20,9</b>	<b>196.656</b>	<b>255.529</b>	<b>29,9</b>
<b>TAŞIT ARAÇLARI Toplam / Motor Vehicles Total</b>	<b>118.030</b>	<b>65.418</b>	<b>-44,6</b>	<b>636.759</b>	<b>705.079</b>	<b>10,7</b>
TRAKTÖR / F.Tractor	3.313	3.502	5,7	16.835	33.250	97,5
<b>TRAKTÖR Toplam / F.Tractor Total</b>	<b>3.313</b>	<b>3.502</b>	<b>5,7</b>	<b>16.835</b>	<b>33.250</b>	<b>97,5</b>
<b>GENEL TOPLAM / Grand Total</b>	<b>121.343</b>	<b>68.920</b>	<b>-43,2</b>	<b>653.594</b>	<b>738.329</b>	<b>13,0</b>

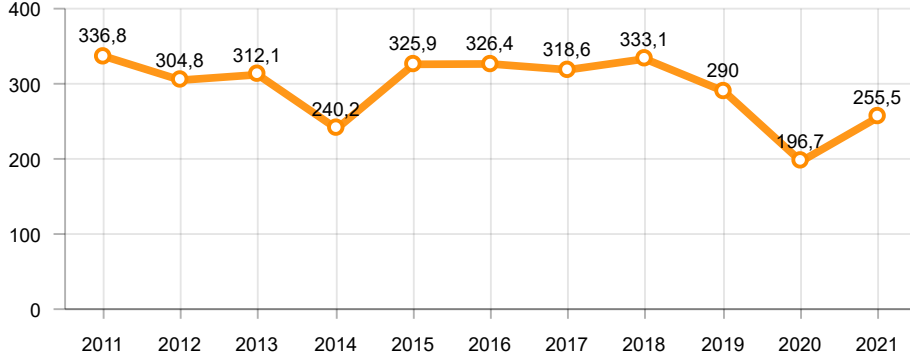
Toplam Üretim ve Otomobil Üretimi (x1000)(OCAK - TEMMUZ)  
Total & P.Cars Production (x1000)(January - July)



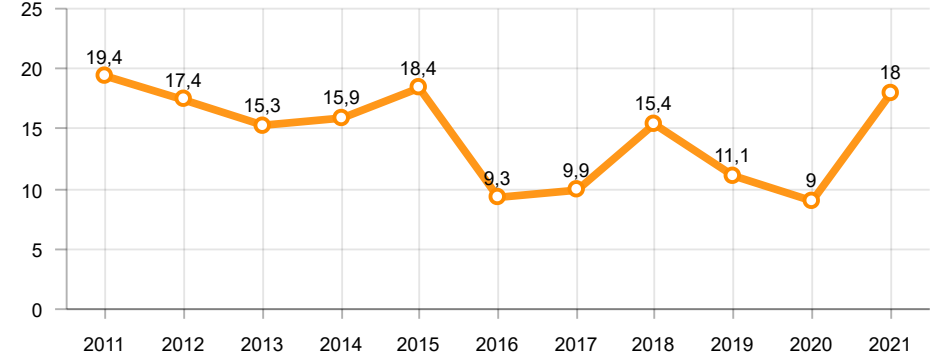
Otomobil Üretimi ve İhracat (x1000)(OCAK - TEMMUZ)  
P.Cars Production & Exports (x1000)(January - July)



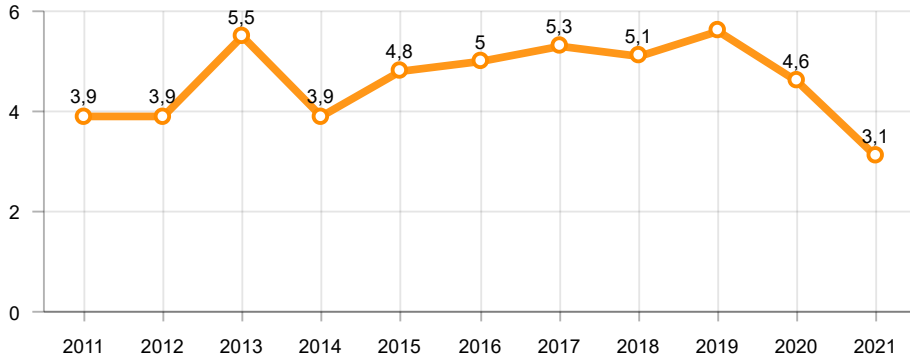
**Ticari Araç Üretimi (x1000)(OCAK - TEMMUZ)**  
Commercial Vehicle Production (x1000)(January - July)



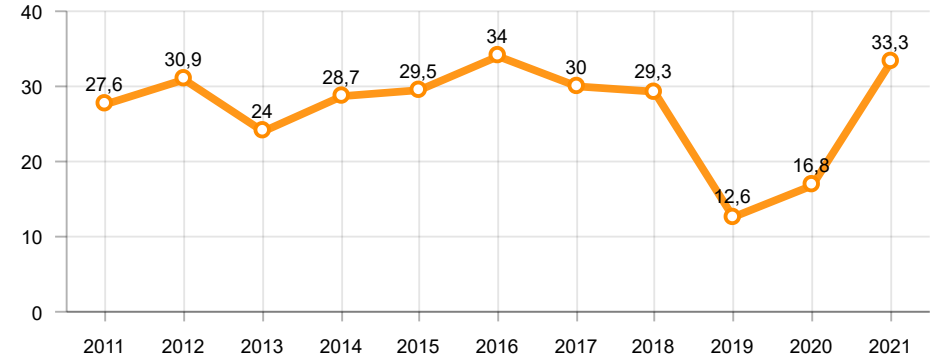
**Büyük Kamyon Üretimi (x1000)(OCAK - TEMMUZ)**  
Heavy Truck Production (x1000)(January - July)

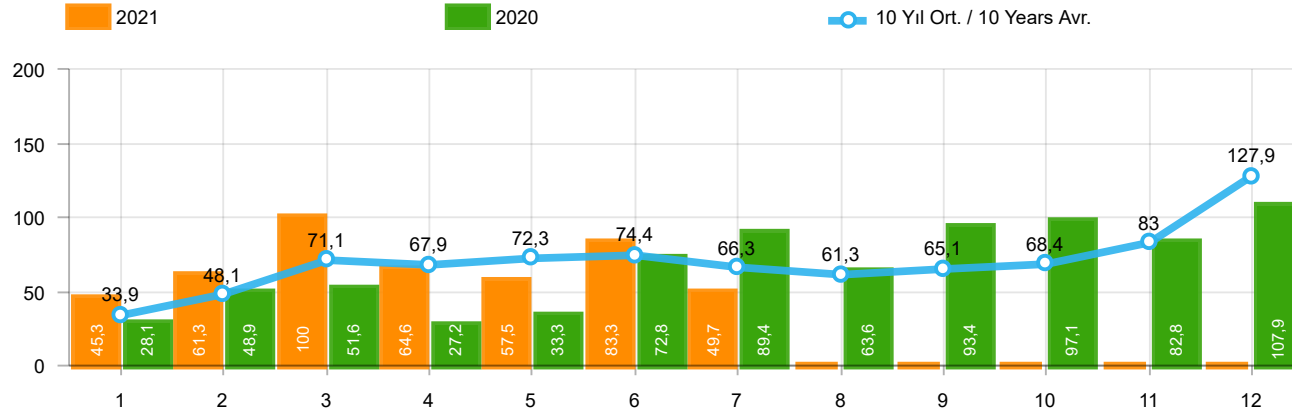


**Otobüs Üretimi (x1000)(OCAK - TEMMUZ)**  
Bus Production (x1000)(January - July)



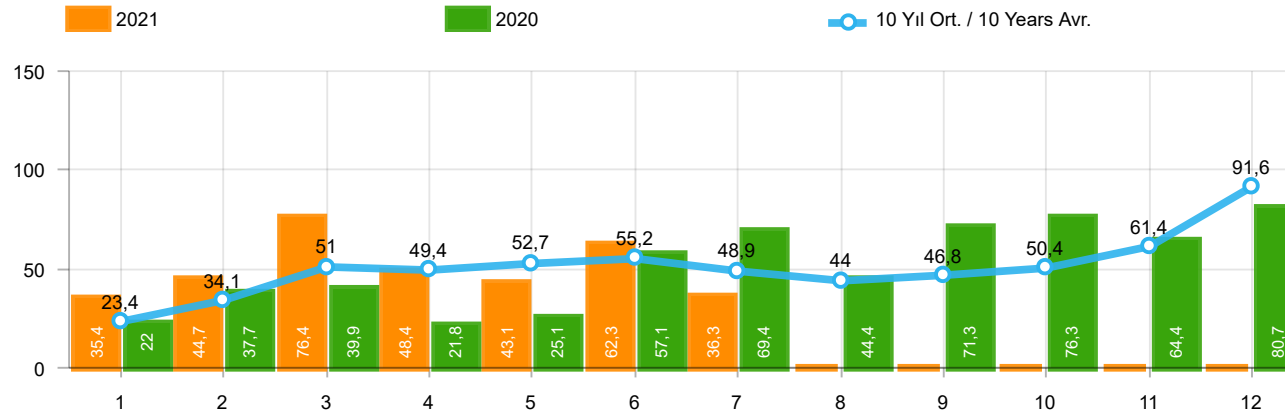
**Traktör Üretimi (x1000)(OCAK - TEMMUZ)**  
F. Tractor Production (x1000)(January - July)





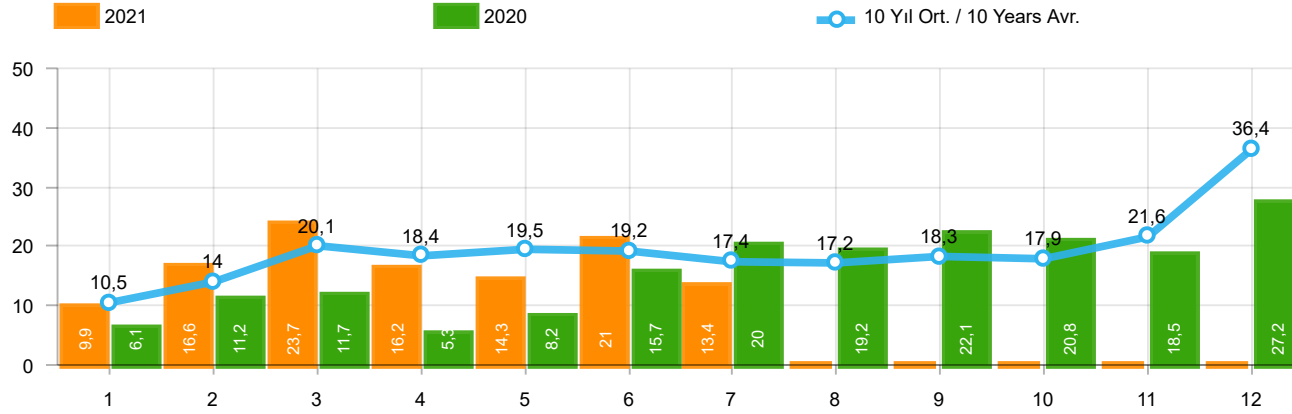
Aylar / Months	10 Yıl Ort / 10 Years Avr.	2021	%
1	33.938	45.308	33,5
2	48.144	61.325	27,4
3	71.122	100.046	40,7
4	67.887	64.551	-4,9
5	72.255	57.467	-20,5
6	74.447	83.304	11,9
7	66.289	49.729	-25,0
TOPLAM/TOTAL	434.084	461.730	6,4

Yıl / Year	1	2	3	4	5	6	7	8	9	10	11	12	1-7 Toplam / Total	Toplam / Total	1-7 Yerli / Local	1-7 İthal / Import	İthal Oran / Import %
2011	47.759	62.586	84.045	82.782	85.862	85.992	65.658	61.645	64.313	73.227	67.150	134.468	514.684	915.487	208.152	306.532	59,6
2012	31.552	44.138	69.242	66.559	75.195	75.108	65.444	60.982	73.501	62.933	75.203	121.442	427.238	821.299	164.294	262.944	61,5
2013	37.563	51.133	72.943	77.265	85.835	78.043	75.152	67.662	71.388	60.690	83.470	136.048	477.934	897.192	149.951	327.983	68,6
2014	34.751	37.659	51.312	57.113	62.447	64.295	62.770	63.303	70.764	69.742	84.368	154.843	370.347	813.367	124.339	246.008	66,4
2015	37.256	59.221	89.765	96.182	85.804	91.071	87.358	85.244	67.181	67.086	88.431	164.464	546.657	1.019.063	192.591	354.066	64,8
2016	34.369	54.840	85.932	87.748	97.090	94.666	59.732	73.654	69.413	85.666	125.462	145.706	514.377	1.014.278	169.892	344.485	67,0
2017	36.640	48.585	76.178	78.231	88.066	85.820	84.727	74.818	74.046	94.439	103.772	141.507	498.247	986.829	184.718	313.529	62,9
2018	36.525	48.768	79.600	73.886	74.996	52.788	54.194	35.137	23.915	22.321	59.406	80.014	420.757	641.550	162.259	258.498	61,4
2019	14.847	25.569	50.651	31.944	33.947	43.899	18.442	26.832	43.068	50.288	59.575	92.885	219.299	491.947	101.160	118.139	53,9
2020	28.123	48.948	51.554	27.165	33.308	72.789	89.419	63.570	93.406	97.125	82.824	107.919	351.306	796.150	156.055	195.251	55,6
2021	45.308	61.325	100.046	64.551	57.467	83.304	49.729						461.730	461.730	201.107	260.623	56,4



Aylar / Months	10 Yıl Ort / 10 Years Avr.	2021	%
1	23.430	35.358	50,9
2	34.107	44.749	31,2
3	51.047	76.357	49,6
4	49.442	48.375	-2,2
5	52.746	43.138	-18,2
6	55.249	62.348	12,8
7	48.938	36.311	-25,8
TOPLAM / TOTAL	314.959	346.636	10,1

Yıl / Year	1	2	3	4	5	6	7	8	9	10	11	12	1-7 Toplam / Total	Toplam / Total	1-7 Yerli / Local	1-7 İthal / Import	İthal Oran / Import %
2011	29.868	39.004	54.023	53.835	56.302	56.714	43.518	38.875	39.964	47.508	44.951	88.957	333.264	593.519	103.557	229.707	68,9
2012	21.077	29.189	47.270	45.645	50.460	50.849	44.531	41.236	49.360	43.440	52.297	80.926	289.021	556.280	80.884	208.137	72,0
2013	25.835	36.814	51.785	56.999	62.383	58.290	55.712	51.611	52.925	46.985	64.117	101.199	347.818	664.655	76.152	271.666	78,1
2014	24.368	27.167	37.812	42.769	46.379	47.278	46.602	45.131	49.262	50.814	59.695	110.054	272.375	587.331	68.746	203.629	74,8
2015	24.498	40.817	61.676	70.211	62.878	67.766	64.218	61.753	47.088	47.954	62.397	114.340	392.064	725.596	100.601	291.463	74,3
2016	23.358	40.588	63.975	65.618	73.832	71.111	45.566	53.977	51.340	63.746	95.783	108.044	384.048	756.938	97.512	286.536	74,6
2017	25.689	34.658	55.616	57.998	65.799	66.164	62.384	54.890	53.423	70.488	75.956	99.694	368.308	722.759	114.704	253.604	68,9
2018	26.611	35.901	59.798	55.108	57.227	41.225	42.024	26.976	17.595	16.809	46.204	60.843	317.894	486.321	107.178	210.716	66,3
2019	10.979	19.205	38.628	24.416	27.126	36.024	15.398	21.544	35.308	39.996	47.803	70.829	171.776	387.256	75.132	96.644	56,3
2020	22.016	37.727	39.887	21.825	25.073	57.067	69.427	44.372	71.296	76.341	64.357	80.721	273.022	610.109	107.268	165.754	60,7
2021	35.358	44.749	76.357	48.375	43.138	62.348	36.311						346.636	346.636	138.043	208.593	60,2

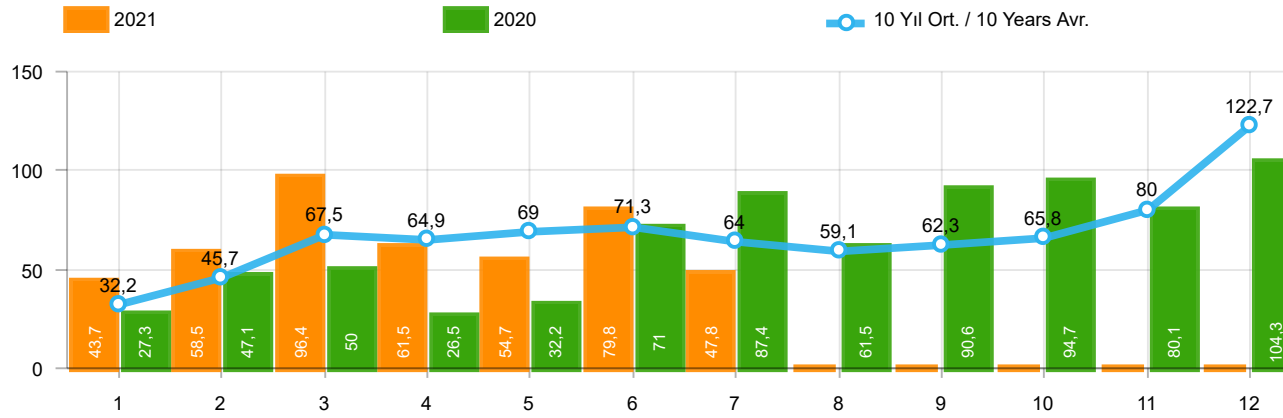


Aylar / Months	10 Yıl Ort / 10 Years Avr.	2021	%
1	10.509	9.950	-5,3
2	14.038	16.576	18,1
3	20.075	23.689	18,0
4	18.445	16.176	-12,3
5	19.509	14.329	-26,6
6	19.198	20.956	9,2
7	17.352	13.418	-22,7
TOPLAM / TOTAL	119.126	115.094	-3,4

Yıl / Year	1	2	3	4	5	6	7	8	9	10	11	12	1-7 Toplam / Total	Toplam / Total	1-7 Yerli / Local	1-7 İthal / Import	İthal Oran / Import %
2011	17.891	23.582	30.022	28.947	29.560	29.278	22.140	22.770	24.349	25.719	22.199	45.511	181.420	321.968	104.595	76.825	42,3
2012	10.475	14.949	21.972	20.914	24.735	24.259	20.913	19.746	24.141	19.493	22.906	40.516	138.217	265.019	83.410	54.807	39,7
2013	11.728	14.319	21.158	20.266	23.452	19.753	19.440	16.051	18.463	13.705	19.353	34.849	130.116	232.537	73.799	56.317	43,3
2014	10.383	10.492	13.500	14.344	16.068	17.017	16.168	18.172	21.502	18.928	24.673	44.789	97.972	226.036	55.593	42.379	43,3
2015	12.758	18.404	28.089	25.971	22.926	23.305	23.140	23.491	20.093	19.132	26.034	50.124	154.593	293.467	91.990	62.603	40,5
2016	11.011	14.252	21.957	22.130	23.258	23.555	14.166	19.677	18.073	21.920	29.679	37.662	130.329	257.340	72.380	57.949	44,5
2017	10.951	13.927	20.562	20.233	22.267	19.656	22.343	19.928	20.623	23.951	27.816	41.813	129.939	264.070	70.014	59.925	46,1
2018	9.914	12.867	19.802	18.778	17.769	11.563	12.170	8.161	6.320	5.512	13.202	19.171	102.863	155.229	55.081	47.782	46,5
2019	3.868	6.364	12.023	7.528	6.821	7.875	3.044	5.288	7.760	10.292	11.772	22.056	47.523	104.691	26.028	21.495	45,2
2020	6.107	11.221	11.667	5.340	8.235	15.722	19.992	19.198	22.110	20.784	18.467	27.198	78.284	186.041	48.787	29.497	37,7
2021	9.950	16.576	23.689	16.176	14.329	20.956	13.418						115.094	115.094	63.064	52.030	45,2

## Hafif Araç Pazarının Analizi(x1000)(OCAK - TEMMUZ)

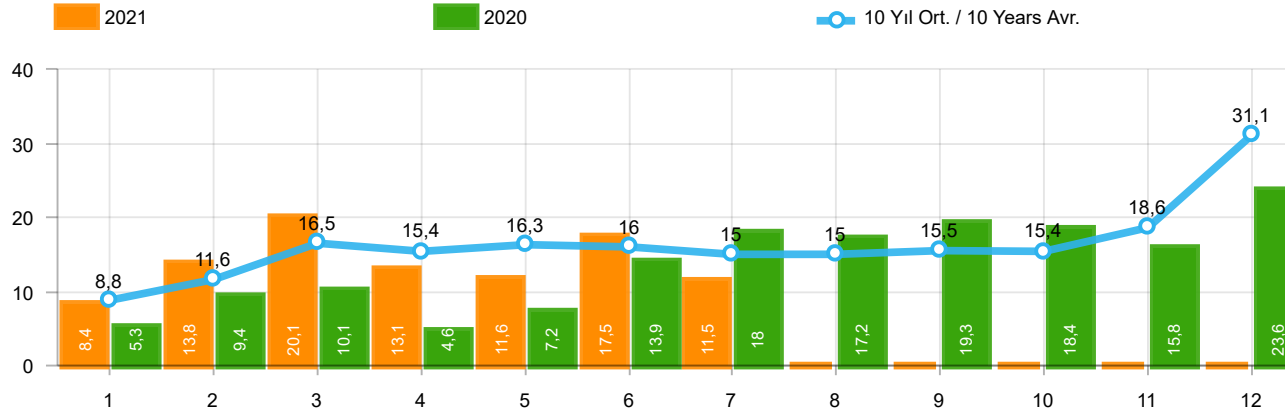
LV Market Analysis(x1000)(January - July)



Aylar / Months	10 Yıl Ort / 10 Years Avr.	2021	%
1	32.200	43.728	35,8
2	45.744	58.504	27,9
3	67.527	96.428	42,8
4	64.856	61.488	-5,2
5	68.997	54.734	-20,7
6	71.295	79.819	12,0
7	63.958	47.849	-25,2
TOPLAM / TOTAL	414.577	442.550	6,8

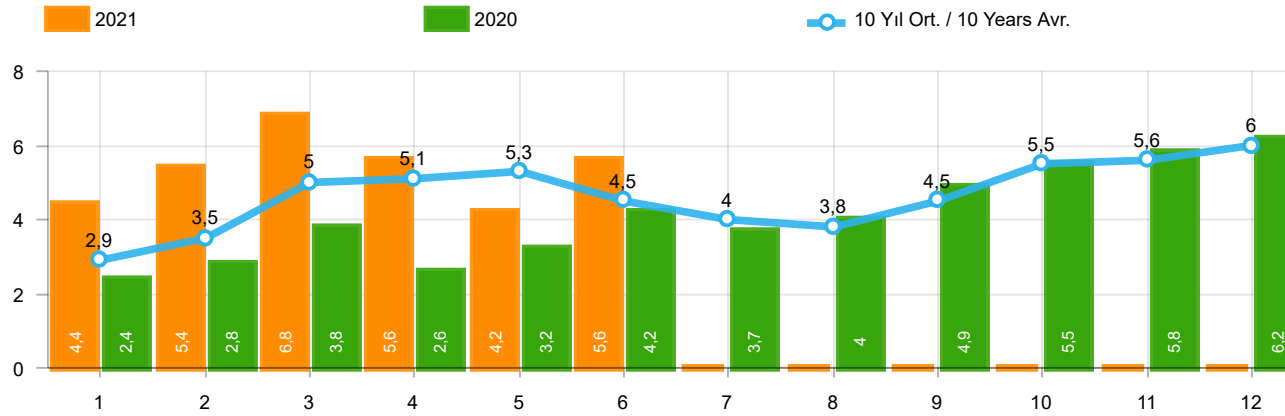
Yıl / Year	1	2	3	4	5	6	7	8	9	10	11	12	1-7 Toplam / Total	Toplam / Total	1-7 Yerli / Local	1-7 İthal / Import	İthal Oran / Import %
2011	44.892	58.663	78.403	77.695	80.646	81.573	63.044	58.406	60.129	69.421	63.657	127.910	484.916	864.439	187.856	297.060	61,3
2012	29.545	41.324	64.884	62.949	70.863	71.067	62.304	58.148	69.629	59.938	71.710	115.400	402.936	777.761	146.652	256.284	63,6
2013	35.523	48.307	68.774	73.575	81.468	74.096	71.596	65.043	67.963	58.014	79.301	129.718	453.339	853.378	131.242	322.097	71,0
2014	32.670	35.021	47.581	53.305	58.121	60.163	59.907	60.199	66.531	66.573	80.621	146.989	346.768	767.681	106.223	240.545	69,4
2015	34.615	55.331	83.302	91.602	81.542	86.158	83.836	82.577	64.025	64.255	84.601	156.173	516.386	968.017	169.943	346.443	67,1
2016	32.713	52.825	82.948	84.887	93.904	91.540	58.533	71.556	67.593	83.000	122.309	141.912	497.350	983.720	157.337	340.013	68,4
2017	35.323	46.965	73.802	75.988	85.422	83.658	82.297	72.536	71.352	91.752	100.859	136.240	483.455	956.194	173.698	309.757	64,1
2018	35.076	47.009	76.345	71.126	72.755	51.037	52.734	34.346	23.028	21.571	58.204	77.706	406.082	620.937	152.578	253.504	62,4
2019	14.373	24.875	49.221	30.971	33.016	42.688	17.927	26.246	41.992	49.075	58.176	90.500	213.071	479.060	96.931	116.140	54,5
2020	27.273	47.122	50.008	26.457	32.235	70.973	87.401	61.533	90.619	94.733	80.141	104.293	341.469	772.788	149.220	192.249	56,3
2021	43.728	58.504	96.428	61.488	54.734	79.819	47.849						442.550	442.550	189.184	253.366	57,3





Aylar / Months	10 Yıl Ort. / 10 Years Avr.	2021	%
1	8.770	8.370	-4,6
2	11.637	13.755	18,2
3	16.480	20.071	21,8
4	15.413	13.113	-14,9
5	16.251	11.596	-28,6
6	16.047	17.471	8,9
7	15.020	11.538	-23,2
TOPLAM / TOTAL	99.618	95.914	-3,7

Yıl / Year	1	2	3	4	5	6	7	8	9	10	11	12	1-7 Toplam / Total	Toplam / Total	1-7 Yerli / Local	1-7 İthal / Import	İthal Oran / Import %
2011	15.024	19.659	24.380	23.860	24.344	24.859	19.526	19.531	20.165	21.913	18.706	38.953	151.652	270.920	84.299	67.353	44,4
2012	8.468	12.135	17.614	17.304	20.403	20.218	17.773	16.912	20.269	16.498	19.413	34.474	113.915	221.481	65.768	48.147	42,3
2013	9.688	11.493	16.989	16.576	19.085	15.806	15.884	13.432	15.038	11.029	15.184	28.519	105.521	188.723	55.090	50.431	47,8
2014	8.302	7.854	9.769	10.536	11.742	12.885	13.305	15.068	17.269	15.759	20.926	36.935	74.393	180.350	37.477	36.916	49,6
2015	10.117	14.514	21.626	21.391	18.664	18.392	19.618	20.824	16.937	16.301	22.204	41.833	124.322	242.421	69.342	54.980	44,2
2016	9.355	12.237	18.973	19.269	20.072	20.429	12.967	17.579	16.253	19.254	26.526	33.868	113.302	226.782	59.825	53.477	47,2
2017	9.634	12.307	18.186	17.990	19.623	17.494	19.913	17.646	17.929	21.264	24.903	36.546	115.147	233.435	58.994	56.153	48,8
2018	8.465	11.108	16.547	16.018	15.528	9.812	10.710	7.370	5.433	4.762	12.000	16.863	88.188	134.616	45.400	42.788	48,5
2019	3.394	5.670	10.593	6.555	5.890	6.664	2.529	4.702	6.684	9.079	10.373	19.671	41.295	91.804	21.799	19.496	47,2
2020	5.257	9.395	10.121	4.632	7.162	13.906	17.974	17.161	19.323	18.392	15.784	23.572	68.447	162.679	41.952	26.495	38,7
2021	8.370	13.755	20.071	13.113	11.596	17.471	11.538						95.914	95.914	51.141	44.773	46,7



Aylar / Months	10 Yıl Ort. / 10 Years Avr.	2021	%
1	2.860	4.411	54,2
2	3.521	5.395	53,2
3	4.990	6.845	37,2
4	5.108	5.581	9,3
5	5.277	4.200	-20,4
6	4.457	5.571	25,0
TOPLAM / TOTAL	26.213	32.003	22,1

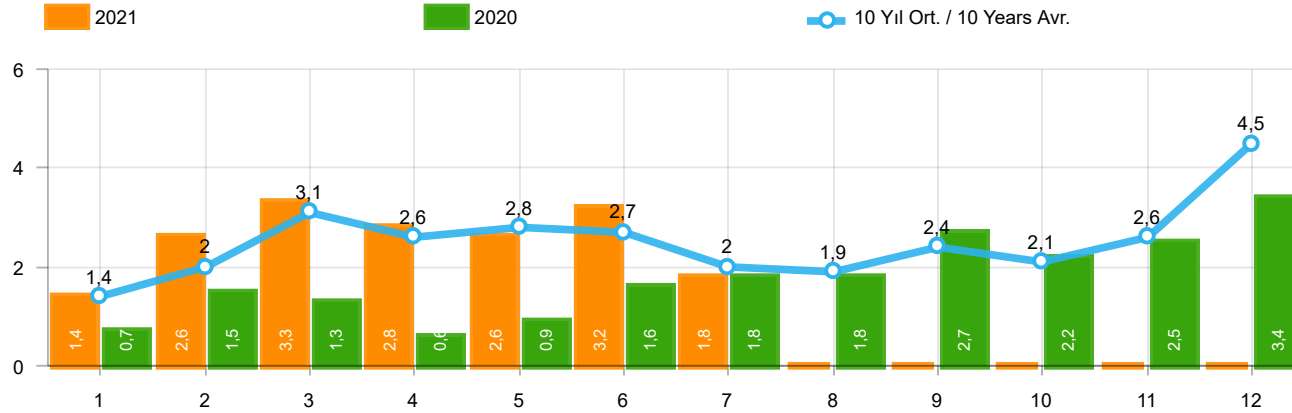
Yıl / Year	1	2	3	4	5	6	7	8	9	10	11	12	1-6 Toplam / Total	Toplam / Total
2011	2.975	5.242	5.927	5.358	6.016	6.335	4.534	4.051	4.140	5.828	4.943	4.992	31.853	60.341
2012	2.362	1.983	4.348	6.579	6.273	4.569	3.837	3.158	3.618	4.027	4.807	4.757	26.114	50.318
2013	2.161	2.432	4.005	4.585	5.616	3.136	4.574	3.408	4.935	4.762	5.781	6.891	21.935	52.286
2014	2.169	3.512	4.476	4.905	5.094	5.028	4.233	4.920	5.619	5.743	6.250	7.409	25.184	59.358
2015	3.124	3.984	5.460	6.383	6.078	5.748	4.677	5.044	4.765	7.049	6.898	7.564	30.777	66.774
2016	3.739	4.731	7.067	6.546	6.575	5.543	3.833	5.134	4.945	7.372	7.090	7.603	34.201	70.178
2017	3.974	4.964	6.773	6.780	7.057	5.356	5.003	4.396	6.064	7.734	7.457	7.351	34.904	72.909
2018	4.362	4.179	5.925	5.216	4.584	3.146	3.654	2.587	3.541	3.698	3.578	3.886	27.412	48.356
2019	1.311	1.401	2.143	2.126	2.229	1.538	2.039	1.579	2.284	2.828	3.037	3.782	10.748	26.297
2020	2.425	2.778	3.771	2.606	3.244	4.173	3.727	3.974	4.928	5.466	5.831	6.221	18.997	49.144
2021	4.411	5.395	6.845	5.581	4.200	5.571	-	-	-	-	-	-	32.003	32.003

Kaynak: TÜİK trafik kayıtları.

Rakamlar, son iki model yılına ait traktör tescillerinden oluşmaktadır.

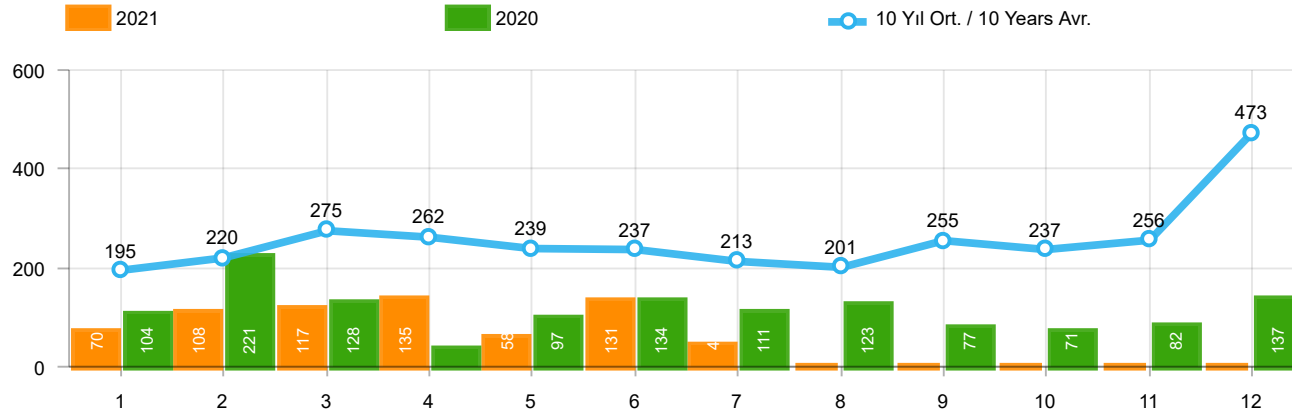
Source: Turkish Statistical Institute – Traffic registrations

Data represents the last two model year's farm tractors registration figures



Aylar / Months	10 Yıl Ort / 10 Years Avr.	2021	%
1	1.393	1.366	-2,0
2	2.007	2.633	31,2
3	3.082	3.319	7,7
4	2.560	2.788	8,9
5	2.753	2.617	-4,9
6	2.689	3.238	20,4
7	1.973	1.772	-10,2
TOPLAM / TOTAL	16.456	17.733	7,8

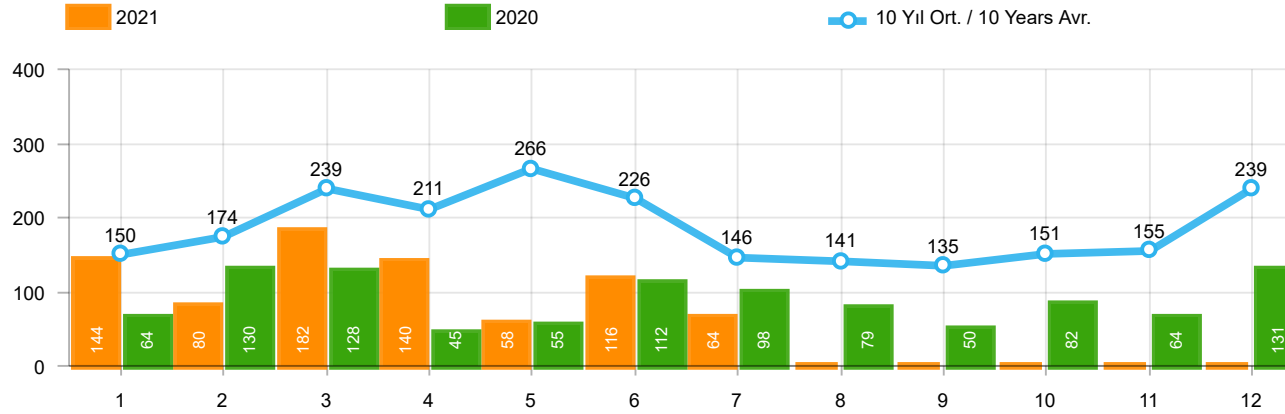
Yıl / Year	1	2	3	4	5	6	7	8	9	10	11	12	1-7 Toplam / Total	Toplam / Total	1-7 Yerli / Local	1-7 İthal / Import	İthal Oran / Import %
2011	2.651	3.544	5.142	4.503	4.563	3.852	2.261	2.745	3.784	3.400	3.149	5.712	26.516	45.306	17.121	9.395	35,4
2012	1.703	2.454	3.866	3.209	3.678	3.540	2.750	2.403	3.296	2.497	3.154	5.300	21.200	37.850	14.572	6.628	31,3
2013	1.484	2.113	3.343	2.925	3.504	3.186	2.777	2.103	2.875	2.086	3.631	5.444	19.332	35.471	13.465	5.867	30,3
2014	1.522	2.065	3.094	3.224	3.727	3.726	2.578	2.783	3.708	2.858	3.384	6.869	19.936	39.538	14.616	5.320	26,7
2015	2.215	3.346	5.699	3.729	3.600	4.253	2.922	2.211	2.687	2.266	3.146	7.307	25.764	43.381	18.207	7.557	29,3
2016	1.167	1.648	2.515	2.319	2.711	2.623	984	1.796	1.438	2.238	2.485	3.127	13.967	25.051	9.526	4.441	31,8
2017	931	1.290	1.982	1.888	2.184	1.891	1.974	1.860	2.284	2.188	2.487	4.438	12.140	25.397	8.380	3.760	31,0
2018	1.237	1.552	2.630	2.328	1.909	1.272	1.235	603	653	488	905	1.695	12.163	16.507	7.180	4.983	41,0
2019	342	579	1.255	842	728	981	435	497	854	1.047	1.100	2.087	5.162	10.747	3.163	1.999	38,7
2020	682	1.475	1.290	628	921	1.570	1.809	1.835	2.660	2.239	2.537	3.358	8.375	21.004	5.373	3.002	35,8
2021	1.366	2.633	3.319	2.788	2.617	3.238	1.772						17.733	17.733	10.476	7.257	40,9



Aylar / Months	10 Yıl Ort. / 10 Years Avr.	2021	%
1	195	70	-64,1
2	220	108	-50,9
3	275	117	-57,4
4	262	135	-48,5
5	239	58	-75,7
6	237	131	-44,6
7	213	44	-79,3
<b>TOPLAM / TOTAL</b>	<b>1.640</b>	<b>663</b>	<b>-59,6</b>

Yıl / Year	1	2	3	4	5	6	7	8	9	10	11	12	1-7 Toplam / Total	Toplam / Total
2011	124	167	267	260	241	233	205	280	270	230	168	525	1.497	2.970
2012	179	257	277	229	257	239	216	249	325	269	189	398	1.654	3.084
2013	191	268	289	276	283	241	367	235	305	392	415	697	1.915	3.959
2014	360	394	384	333	294	258	216	229	395	220	266	653	2.239	4.002
2015	280	322	451	561	372	405	389	253	316	394	325	621	2.780	4.689
2016	309	158	251	302	261	196	139	220	241	230	354	431	1.616	3.092
2017	212	211	227	231	272	156	250	235	318	268	317	594	1.559	3.291
2018	134	142	410	296	207	315	180	146	160	155	184	425	1.684	2.754
2019	57	61	63	96	106	189	55	44	138	138	257	244	627	1.448
2020	104	221	128	35	97	134	111	123	77	71	82	137	830	1.320
2021	70	108	117	135	58	131	44						663	663

**Otobüs Pazarının Analizi(OCAK - TEMMUZ)**  
Otobus Market Analysis(January - July)

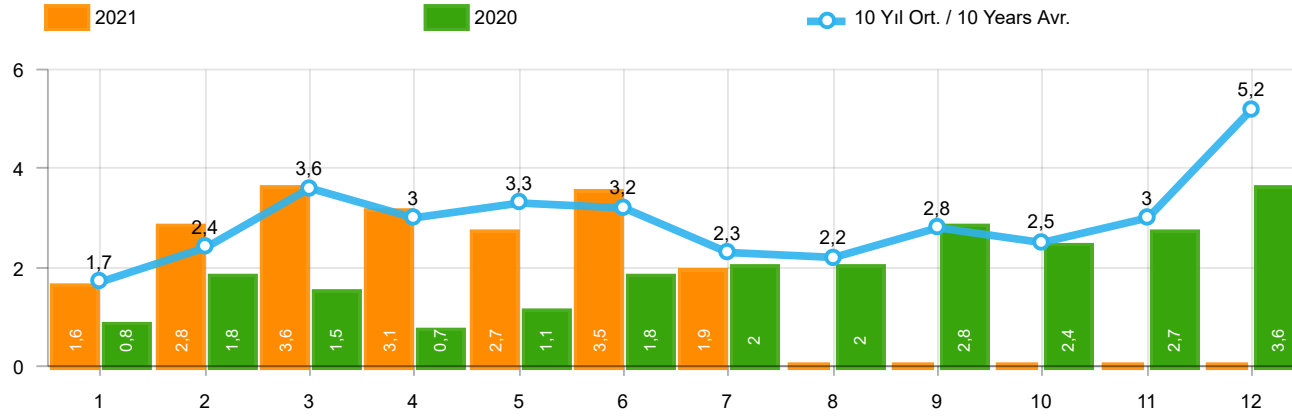


Aylar / Months	10 Yıl Ort. / 10 Years Avr.	2021	%
1	150	144	-3,9
2	174	80	-54,0
3	239	182	-23,9
4	211	140	-33,5
5	266	58	-78,2
6	226	116	-48,6
7	146	64	-56,3
TOPLAM / TOTAL	1.412	784	-44,5

Yıl / Year	1	2	3	4	5	6	7	8	9	10	11	12	1-7 Toplam / Total	Toplam / Total	1-7 Yerli / Local	1-7 İthal / Import	İthal Oran / Import %
2011	92	212	233	324	412	334	148	214	130	176	176	321	1.755	2.772	1.678	77	4,4
2012	125	103	215	172	397	262	174	182	251	229	150	344	1.448	2.604	1.416	32	2,2
2013	365	445	537	489	580	520	412	281	245	198	123	189	3.348	4.384	3.329	19	0,6
2014	199	179	253	251	305	148	69	92	130	91	97	332	1.404	2.146	1.261	143	10,2
2015	146	222	313	290	290	255	211	203	153	171	359	363	1.727	2.976	1.661	66	3,8
2016	180	209	218	240	214	307	76	82	141	198	314	236	1.444	2.415	1.413	31	2,1
2017	174	119	167	124	188	115	206	187	92	231	109	235	1.093	1.947	1.081	12	1,1
2018	78	65	215	136	125	164	45	42	74	107	113	188	828	1.352	817	11	1,3
2019	75	54	112	35	97	41	25	45	84	28	42	54	439	692	439	-	-
2020	64	130	128	45	55	112	98	79	50	82	64	131	632	1.038	632	-	-
2021	144	80	182	140	58	116	64						784	784	784	-	-

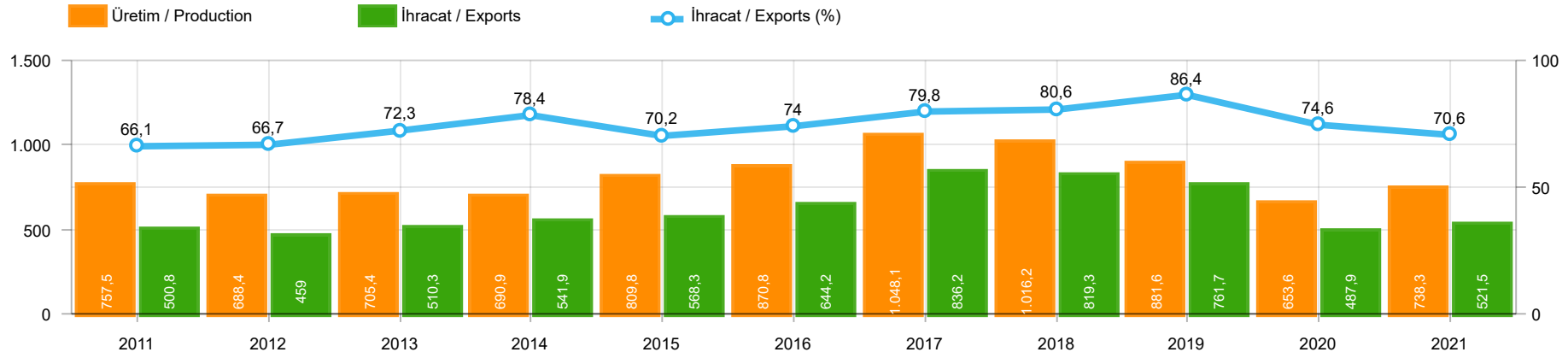
## Ağır Ticari Araç Pazarının Analizi(x1000)(OCAK - TEMMUZ)

HCV Market Analysis(x1000)(January - July)



Aylar / Months	10 Yıl Ort. / 10 Years Avr.	2021	%
1	1.738	1.580	-9,1
2	2.401	2.821	17,5
3	3.595	3.618	0,6
4	3.032	3.063	1,0
5	3.258	2.733	-16,1
6	3.152	3.485	10,6
7	2.332	1.880	-19,4
TOPLAM / TOTAL	19.507	19.180	-1,7

Yıl / Year	1	2	3	4	5	6	7	8	9	10	11	12	1-7 Toplam / Total	Toplam / Total	1-7 Yerli / Local	1-7 İthal / Import	İthal Oran / Import %
2011	2.867	3.923	5.642	5.087	5.216	4.419	2.614	3.239	4.184	3.806	3.493	6.558	29.768	51.048	20.296	9.472	31,8
2012	2.007	2.814	4.358	3.610	4.332	4.041	3.140	2.834	3.872	2.995	3.493	6.042	24.302	43.538	17.642	6.660	27,4
2013	2.040	2.826	4.169	3.690	4.367	3.947	3.556	2.619	3.425	2.676	4.169	6.330	24.595	43.814	18.709	5.886	23,9
2014	2.081	2.638	3.731	3.808	4.326	4.132	2.863	3.104	4.233	3.169	3.747	7.854	23.579	45.686	18.116	5.463	23,2
2015	2.641	3.890	6.463	4.580	4.262	4.913	3.522	2.667	3.156	2.831	3.830	8.291	30.271	51.046	22.648	7.623	25,2
2016	1.656	2.015	2.984	2.861	3.186	3.126	1.199	2.098	1.820	2.666	3.153	3.794	17.027	30.558	12.555	4.472	26,3
2017	1.317	1.620	2.376	2.243	2.644	2.162	2.430	2.282	2.694	2.687	2.913	5.267	14.792	30.635	11.020	3.772	25,5
2018	1.449	1.759	3.255	2.760	2.241	1.751	1.460	791	887	750	1.202	2.308	14.675	20.613	9.681	4.994	34,0
2019	474	694	1.430	973	931	1.211	515	586	1.076	1.213	1.399	2.385	6.228	12.887	4.229	1.999	32,1
2020	850	1.826	1.546	708	1.073	1.816	2.018	2.037	2.787	2.392	2.683	3.626	9.837	23.362	6.835	3.002	30,5
2021	1.580	2.821	3.618	3.063	2.733	3.485	1.880						19.180	19.180	11.923	7.257	37,8



	2011	2012	2013	2014	2015	2016	2017	2018	2019	2020	2021
<b>İhracat/Export</b>	500.772	459.039	510.324	541.857	568.275	644.221	836.175	819.270	761.663	487.868	521.502
<b>Üretim/Production</b>	757.524	688.447	705.371	690.902	809.832	870.818	1.048.131	1.016.213	881.552	653.594	738.329
<b>İhracat/Exports (%)</b>	66,1	66,7	72,3	78,4	70,2	74	79,8	80,6	86,4	74,6	70,6

**Taşıt Araçları İhracatı (2019 - 2021)**  
Motor Vehicle Exports (2019 - 2021)

SEKTÖR / SECTOR	2019	2020	1/7-2020	1/7-2021	2021/2020 %
OTOMOBİL / Pass.Car	828.744	596.616	333.725	322.874	-3,3
<b>OTOMOBİL TOPLAM / Pass. Car Total</b>	<b>828.744</b>	<b>596.616</b>	<b>333.725</b>	<b>322.874</b>	<b>-3,3</b>
KAMYON / Truck	14.824	10.333	5.111	8.346	63,3
KAMYONET / Pick Up	349.490	263.767	119.841	158.341	32,1
OTOBÜS / Bus	9.001	6.886	3.782	2.419	-36,0
MİNİBÜS / Minibus	49.283	38.296	17.569	19.969	13,7
MİDİBÜS / Midibus	1.244	640	390	371	-4,9
<b>TİCARİ ARAÇLAR TOPLAM / Commercial Vehicle Total</b>	<b>423.842</b>	<b>319.922</b>	<b>146.693</b>	<b>189.446</b>	<b>29,1</b>
<b>TAŞIT ARAÇLARI TOPLAM / Motor Vehicles Total</b>	<b>1.252.586</b>	<b>916.538</b>	<b>480.418</b>	<b>512.320</b>	<b>6,6</b>
TRAKTÖR / F.Tractor	15.844	13.495	7.450	9.182	23,2
<b>TRAKTÖR TOPLAM / F.Tractor Total</b>	<b>15.844</b>	<b>13.495</b>	<b>7.450</b>	<b>9.182</b>	<b>23,2</b>
<b>GENEL TOPLAM / GRAND TOTAL</b>	<b>1.268.430</b>	<b>930.033</b>	<b>487.868</b>	<b>521.502</b>	<b>6,9</b>

**Üretici Bazında İhracat (adet)**  
Exports by Manufacturer (unit)

Üreticiler / Manufacturers	2019	2020	1-7 / 2020	1-7 / 2021
A.I.O.S.	1.433	510	324	354
FORD OTOSAN	333.734	254.003	115.943	148.500
HATTAT TRAKTÖR	637	942	407	388
HONDA TÜRKİYE	7.528	6.421	4.903	1.260
HYUNDAI ASSAN	169.803	128.003	74.531	84.537
KARSAN	2.713	755	245	366
M. BENZ TÜRK	16.324	11.184	5.714	7.147
MAN TÜRKİYE	2.892	2.628	1.613	1.074
OTOKAR	1.156	862	423	353
OYAK RENAULT	295.275	211.954	122.355	93.759
TEMSA	602	243	88	252
TOFAŞ	194.107	117.886	58.516	65.159
TOYOTA	227.019	182.089	95.763	109.559
TÜRK TRAKTÖR	15.207	12.553	7.043	8.794
<b>GENEL TOPLAM / Grand Total</b>	<b>1.268.430</b>	<b>930.033</b>	<b>487.868</b>	<b>521.502</b>



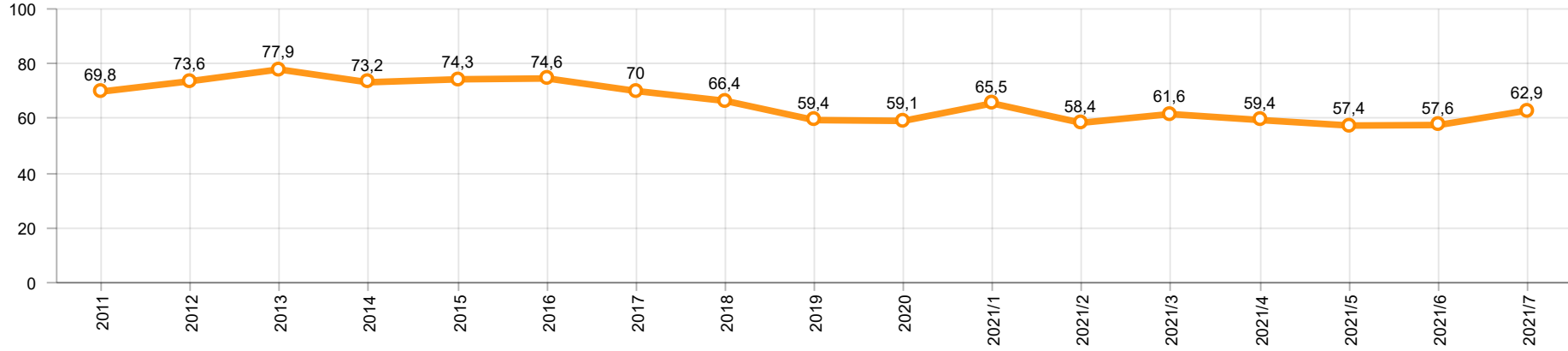
**Otomotiv Ana ve Yan Sanayii İhracatı (ABD \$)**  
CBU and CKD Exports - \$

Sektör / Sector	2019	2020	OCAK - TEMMUZ / January - July 2020	OCAK - TEMMUZ / January - July 2021	2021 / 2020 %
<b>Toplam Yan Sanayi / Total Component Industry</b>	<b>10.616.350.211,16</b>	<b>9.454.364.326,61</b>	<b>4.821.012.733,98</b>	<b>6.841.689.109,12</b>	<b>41,9</b>
İç ve Dış Lastik / Tyres	1.479.050.683,54	1.248.005.046,63	656.910.091,88	898.873.877,03	36,8
Emniyet Camı / Safety Glasses	150.643.773,04	140.363.576,74	74.388.037,99	111.808.824	50,3
Motor / Engine	518.051.730,93	461.449.027,72	254.882.982,26	185.891.536,74	-27,1
Akümülatör / Batteries	397.317.829,27	353.038.607,91	174.226.035,5	260.262.689,73	49,4
Diğer Aksam ve Parça / Spare Parts&Components	8.071.286.194,38	7.251.508.067,61	3.660.605.586,35	5.384.852.181,62	47,1
<b>Toplam Ana Sanayi / Total Vehicle Industry</b>	<b>20.613.753.125,48</b>	<b>16.491.127.868,9</b>	<b>8.378.901.726,49</b>	<b>9.889.049.028,4</b>	<b>18,0</b>
Otobüs / Bus	1.759.421.232,04	1.300.660.458,98	697.600.099,29	501.816.687,31	-28,1
Midibüs-Minibüs / Midibus-Minibus	222.922.951,87	188.434.401,85	122.368.848,65	91.177.734,73	-25,5
Otomobil / P.Cars	11.864.815.315,9	9.312.088.333,82	5.026.076.018,09	5.391.650.257,87	7,3
Kamyon-Kamyonet / Truck-Pick Up&Van	4.945.359.113,74	4.254.957.839,91	1.798.907.781,99	2.799.247.813	55,6
Römork ve Yarı Römork / Trailer-Semi Trailer	503.203.636,07	417.420.859,24	225.416.027,46	324.392.188,92	43,9
Çekici / Tractor	839.891.842,8	602.899.223,51	295.148.999,05	496.984.695,74	68,4
Tarım Traktörü / Farm Tractor	478.139.033,06	414.666.751,59	213.383.951,96	283.779.650,83	33,0
<b>Toplam / Total</b>	<b>31.230.103.336,64</b>	<b>25.945.492.195,51</b>	<b>13.199.914.460,47</b>	<b>16.730.738.137,52</b>	<b>26,7</b>

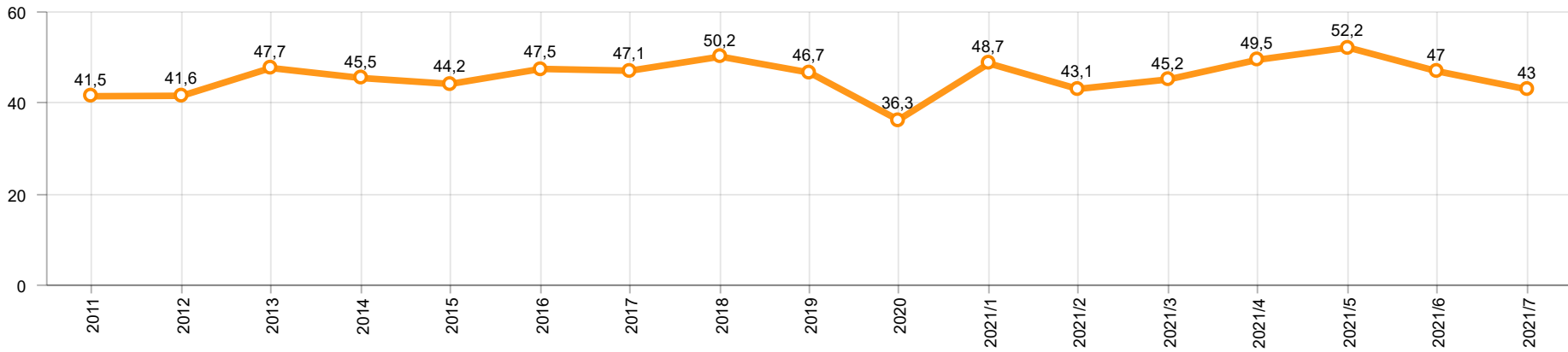
Kaynak: Uludağ İhracatçı Birlikleri . ÜİB tarafından OSD için özel olarak analiz edilen Otomotiv İhracatı kapsamında; ÜİB Türkiye Geneli Otomotiv Endüstrisi sınıflandırmasına kıyasla “Römork ve Yarı Römork” , “Tarım Traktörü” verileri dahil edilmekte; “Kullanılmış Araçlar” ,”İki Tekerlekli Taşıtlar” , “Demiryolu Taşıtları” hariç tutulmaktadır.

Source: Uludağ Exporters Association – Special Analyze for OSD.Compared to Turkish General Automotive Industry classification, this special analyze includes; farms tractors, trailers and semi-trailers, does not include; used vehicles, two-wheeled vehicles and railway vehicles

**Otomobil Pazarında İthalatın Payı (%)**  
Import Share in P.Car Market (%)



**Hafif Ticari Araçlar Pazarında İthalatın Payı (%)**  
Import Share in LCV Market (%)



Araç Tipleri / Vehicle Types	1	2	3	4	5	6	7	8	9	10	11	12	Toplam / Total
<b>OTOMOBİL - Pass.Car</b>	<b>48.049</b>	<b>50.384</b>	<b>57.024</b>	<b>56.599</b>	<b>44.565</b>	<b>40.506</b>	<b>25.747</b>						<b>322.874</b>
KAMYON - H. Truck	986	1.332	2.069	1.441	796	973	683						<b>8.280</b>
K.KAMYON - L. Truck	12	12	6	6	6	24	-						<b>66</b>
KAMYONET - Pick Up	25.164	31.489	31.340	18.079	5.971	25.987	20.311						<b>158.341</b>
OTOBÜS - Bus	121	258	303	344	398	512	483						<b>2.419</b>
MİNİBÜS - Minibus	3.159	4.405	4.836	1.605	58	2.405	3.501						<b>19.969</b>
MİDİBÜS - Midibus	77	28	57	39	53	61	56						<b>371</b>
<b>TİCARİ ARAÇLAR TOPLAMI - CV Total</b>	<b>29.519</b>	<b>37.524</b>	<b>38.611</b>	<b>21.514</b>	<b>7.282</b>	<b>29.962</b>	<b>25.034</b>						<b>189.446</b>
<b>TAŞIT ARAÇLARI TOPLAMI - MV Total</b>	<b>77.568</b>	<b>87.908</b>	<b>95.635</b>	<b>78.113</b>	<b>51.847</b>	<b>70.468</b>	<b>50.781</b>						<b>512.320</b>
TRAKTÖR - F.Tractor	1.235	1.080	1.311	1.356	1.231	1.687	1.282						<b>9.182</b>
<b>GENEL TOPLAM - Grand Total</b>	<b>78.803</b>	<b>88.988</b>	<b>96.946</b>	<b>79.469</b>	<b>53.078</b>	<b>72.155</b>	<b>52.063</b>						<b>521.502</b>

**Otomobil / P.Car**

Firmalar / Firms	1	2	3	4	5	6	7	8	9	10	11	12	Toplam / Total
FORD OTOSAN	378	669	166	222	36	19	169	-	-	-	-	-	<b>1.659</b>
HONDA TÜRKİYE	149	118	243	120	179	211	240	-	-	-	-	-	<b>1.260</b>
HYUNDAI ASSAN	9.920	10.963	15.565	12.209	10.400	14.080	11.400	-	-	-	-	-	<b>84.537</b>
OYAK RENAULT	14.070	15.130	17.913	20.650	15.838	10.149	9	-	-	-	-	-	<b>93.759</b>
TOFAŞ	4.038	6.889	4.852	6.345	5.126	4.278	572	-	-	-	-	-	<b>32.100</b>
TOYOTA	19.494	16.615	18.285	17.053	12.986	11.769	13.357	-	-	-	-	-	<b>109.559</b>
<b>TOPLAM - Total</b>	<b>48.049</b>	<b>50.384</b>	<b>57.024</b>	<b>56.599</b>	<b>44.565</b>	<b>40.506</b>	<b>25.747</b>	-	-	-	-	-	<b>322.874</b>

**Kamyonet / Pick-up**

Firmalar / Firms	1	2	3	4	5	6	7	8	9	10	11	12	Toplam / Total
A.I.O.S.	-	-	-	-	-	-	-	-	-	-	-	-	<b>-</b>
FORD OTOSAN	19.856	24.107	26.608	13.013	1.598	21.400	18.276	-	-	-	-	-	<b>124.858</b>
KARSAN	22	16	4	-	74	79	129	-	-	-	-	-	<b>324</b>
OTOKAR	-	37	14	24	1	10	14	-	-	-	-	-	<b>100</b>
TOFAŞ	5.286	7.329	4.714	5.042	4.298	4.498	1.892	-	-	-	-	-	<b>33.059</b>
<b>TOPLAM - Total</b>	<b>25.164</b>	<b>31.489</b>	<b>31.340</b>	<b>18.079</b>	<b>5.971</b>	<b>25.987</b>	<b>20.311</b>	-	-	-	-	-	<b>158.341</b>

**Minibüs / Minibus**

Firmalar / Firms	1	2	3	4	5	6	7	8	9	10	11	12	Toplam / Total
FORD OTOSAN	3.159	4.404	4.826	1.598	58	2.394	3.501	-	-	-	-	-	<b>19.940</b>
KARSAN	-	1	10	7	-	11	-	-	-	-	-	-	<b>29</b>
<b>TOPLAM - Total</b>	<b>3.159</b>	<b>4.405</b>	<b>4.836</b>	<b>1.605</b>	<b>58</b>	<b>2.405</b>	<b>3.501</b>	-	-	-	-	-	<b>19.969</b>

**Kamyon / Truck**

Firmalar / Firms	1	2	3	4	5	6	7	8	9	10	11	12	Toplam / Total
A.I.O.S.	12	12	6	6	6	24	-	-	-	-	-	-	66
FORD OTOSAN	214	253	372	376	415	214	199	-	-	-	-	-	2.043
KARSAN	-	-	-	-	-	-	-	-	-	-	-	-	-
M. BENZ TÜRK	772	1.079	1.697	1.065	381	759	484	-	-	-	-	-	6.237
OTOKAR	-	-	-	-	-	-	-	-	-	-	-	-	-
<b>TEMSA</b>	-	-	-	-	-	-	-	-	-	-	-	-	-
<b>TOPLAM - Total</b>	<b>998</b>	<b>1.344</b>	<b>2.075</b>	<b>1.447</b>	<b>802</b>	<b>997</b>	<b>683</b>	-	-	-	-	-	<b>8.346</b>

**Midibüs / Midibus**

Firmalar / Firms	1	2	3	4	5	6	7	8	9	10	11	12	Toplam / Total
A.I.O.S.	31	21	47	11	26	22	30	-	-	-	-	-	188
KARSAN	-	-	3	1	5	3	1	-	-	-	-	-	13
OTOKAR	44	6	4	22	4	19	20	-	-	-	-	-	119
TEMSA	2	1	3	5	18	17	5	-	-	-	-	-	51
<b>TOPLAM - Total</b>	<b>77</b>	<b>28</b>	<b>57</b>	<b>39</b>	<b>53</b>	<b>61</b>	<b>56</b>	-	-	-	-	-	<b>371</b>

**Otobüs / Bus**

Firmalar / Firms	1	2	3	4	5	6	7	8	9	10	11	12	Toplam / Total
A.I.O.S.	8	13	1	14	27	20	17	-	-	-	-	-	100
KARSAN	-	-	-	-	-	-	-	-	-	-	-	-	-
M. BENZ TÜRK	11	106	46	72	176	243	256	-	-	-	-	-	910
MAN TÜRKİYE	42	102	221	226	146	192	145	-	-	-	-	-	1.074
OTOKAR	47	8	13	6	19	23	18	-	-	-	-	-	134
TEMSA	13	29	22	26	30	34	47	-	-	-	-	-	201
<b>TOPLAM - Total</b>	<b>121</b>	<b>258</b>	<b>303</b>	<b>344</b>	<b>398</b>	<b>512</b>	<b>483</b>	-	-	-	-	-	<b>2.419</b>

**Traktör / F.Tractor**

Firmalar / Firms	1	2	3	4	5	6	7	8	9	10	11	12	Toplam / Total
HATTAT TRAKTÖR	20	50	69	52	72	60	65	-	-	-	-	-	388
TÜRK TRAKTÖR	1.215	1.030	1.242	1.304	1.159	1.627	1.217	-	-	-	-	-	8.794
<b>TOPLAM - Total</b>	<b>1.235</b>	<b>1.080</b>	<b>1.311</b>	<b>1.356</b>	<b>1.231</b>	<b>1.687</b>	<b>1.282</b>	-	-	-	-	-	<b>9.182</b>

Firmalar / Firms	2020 Toplam / Total	1	2	3	4	5	6	7	8	9	10	11	12	Toplam / Total
Alfa Romeo	214	76	20	11	9	8	21	12	-	-	-	-	-	157
Aston Martin	17	3	2	4	3	2	3	2	-	-	-	-	-	19
Audi	18.168	839	747	1.899	1.040	915	1.439	1.047	-	-	-	-	-	7.926
Bentley	11	-	1	-	4	1	1	1	-	-	-	-	-	8
BMW	14.270	613	937	1.822	1.349	904	1.319	1.105	-	-	-	-	-	8.049
Citroen	22.254	1.188	1.702	2.988	1.720	1.791	1.268	947	-	-	-	-	-	11.604
CUPRA	-	-	-	-	55	17	5	12	-	-	-	-	-	89
Dacia	25.910	1.396	1.611	3.540	2.500	1.605	3.191	2.999	-	-	-	-	-	16.842
DFSK	-	-	-	-	2	3	12	9	-	-	-	-	-	26
DS	694	20	35	80	15	106	92	23	-	-	-	-	-	371
Ferrari	21	1	-	5	2	4	2	2	-	-	-	-	-	16
Fiat	1.298	57	124	200	118	88	88	55	-	-	-	-	-	730
Ford	23.897	1.397	891	1.852	1.204	953	1.050	544	-	-	-	-	-	7.891
Honda	2.337	249	173	381	189	194	303	162	-	-	-	-	-	1.651
Hyundai	19.035	644	723	1.382	1.020	760	1.481	1.216	-	-	-	-	-	7.226
Jaguar	265	4	2	20	8	1	8	11	-	-	-	-	-	54
Jeep	4.369	177	266	444	203	229	592	254	-	-	-	-	-	2.165
Kia	13.542	1.306	1.502	1.833	1.917	1.174	2.113	1.600	-	-	-	-	-	11.445
Lamborghini	19	1	2	-	1	2	2	-	-	-	-	-	-	8
Land Rover	2.010	79	75	386	235	137	206	128	-	-	-	-	-	1.246
Lexus	143	21	14	12	23	9	38	12	-	-	-	-	-	129
Maserati	47	2	5	8	5	-	11	3	-	-	-	-	-	34
Mazda	156	7	10	17	6	4	9	12	-	-	-	-	-	65
Mercedes-Benz	15.617	977	984	2.243	1.673	1.447	2.133	1.013	-	-	-	-	-	10.470
MG	-	-	-	-	19	27	94	21	-	-	-	-	-	161
Mini	1.395	141	57	137	77	66	116	102	-	-	-	-	-	696
Mitsubishi	1.237	63	61	138	227	87	77	44	-	-	-	-	-	697
Nissan	12.717	1.435	1.682	1.869	683	542	1.237	707	-	-	-	-	-	8.155
Opel	31.229	1.672	1.708	3.148	2.010	1.857	2.391	1.167	-	-	-	-	-	13.953
Peugeot	36.589	2.677	2.742	3.485	1.758	2.561	2.544	724	-	-	-	-	-	16.491
Porsche	619	41	43	126	53	42	42	41	-	-	-	-	-	388
Renault	9.339	673	985	955	349	412	680	369	-	-	-	-	-	4.423
Seat	11.551	880	1.313	1.882	1.015	1.189	1.486	966	-	-	-	-	-	8.731
Skoda	24.175	1.930	2.708	5.204	2.200	2.014	3.521	2.028	-	-	-	-	-	19.605
Smart	49	-	4	3	-	-	-	-	-	-	-	-	-	7
Ssangyong	650	68	66	103	49	20	45	22	-	-	-	-	-	373
Subaru	673	31	27	84	63	60	85	42	-	-	-	-	-	392
Suzuki	2.977	77	91	419	205	357	441	430	-	-	-	-	-	2.020
Toyota	2.016	111	113	294	173	149	251	147	-	-	-	-	-	1.238
Volkswagen	52.740	4.082	4.286	9.440	5.759	4.506	6.617	4.202	-	-	-	-	-	38.892
Volvo	8.200	215	425	660	800	520	880	650	-	-	-	-	-	4.150
<b>GENEL TOPLAM - Grand Total</b>	<b>360.450</b>	<b>23.153</b>	<b>26.137</b>	<b>47.074</b>	<b>28.741</b>	<b>24.763</b>	<b>35.894</b>	<b>22.831</b>	<b>-</b>	<b>-</b>	<b>-</b>	<b>-</b>	<b>-</b>	<b>208.593</b>

Firmalar / Firms	2020 Toplam / Total	1	2	3	4	5	6	7	8	9	10	11	12	Toplam / Total
<b>Citroen</b>	<b>5.226</b>	277	533	602	539	321	427	255	-	-	-	-	-	<b>2.954</b>
<b>Dacia</b>	<b>4.890</b>	768	650	772	363	372	894	1.016	-	-	-	-	-	<b>4.835</b>
<b>Fiat</b>	<b>3.861</b>	100	298	360	178	306	395	165	-	-	-	-	-	<b>1.802</b>
<b>Ford</b>	<b>3.034</b>	60	62	143	89	418	253	181	-	-	-	-	-	<b>1.206</b>
<b>Hyundai</b>	<b>990</b>	125	244	185	123	56	181	108	-	-	-	-	-	<b>1.022</b>
<b>Isuzu</b>	<b>229</b>	13	6	56	68	42	63	48	-	-	-	-	-	<b>296</b>
<b>Iveco</b>	<b>1.851</b>	91	209	316	215	149	270	223	-	-	-	-	-	<b>1.473</b>
<b>Kia</b>	<b>1.900</b>	152	203	256	212	147	141	-	-	-	-	-	-	<b>1.111</b>
<b>Mercedes-Benz</b>	<b>5.175</b>	155	414	637	393	489	875	467	-	-	-	-	-	<b>3.430</b>
<b>Mitsubishi</b>	<b>4.629</b>	402	351	418	464	217	379	227	-	-	-	-	-	<b>2.458</b>
<b>Nissan</b>	<b>544</b>	82	61	53	171	109	121	92	-	-	-	-	-	<b>689</b>
<b>Opel</b>	<b>3.067</b>	176	470	528	225	243	314	107	-	-	-	-	-	<b>2.063</b>
<b>Peugeot</b>	<b>7.085</b>	519	669	1.318	690	514	705	459	-	-	-	-	-	<b>4.874</b>
<b>Renault</b>	<b>2.634</b>	269	349	863	424	297	467	154	-	-	-	-	-	<b>2.823</b>
<b>Ssangyong</b>	<b>434</b>	20	30	54	30	28	36	15	-	-	-	-	-	<b>213</b>
<b>Toyota</b>	<b>1.417</b>	238	62	995	942	588	592	368	-	-	-	-	-	<b>3.785</b>
<b>Volkswagen</b>	<b>12.036</b>	626	1.315	1.510	1.366	1.754	2.097	1.071	-	-	-	-	-	<b>9.739</b>
<b>GENEL TOPLAM - Grand Total</b>	<b>59.002</b>	<b>4.073</b>	<b>5.926</b>	<b>9.066</b>	<b>6.492</b>	<b>6.050</b>	<b>8.210</b>	<b>4.956</b>	-	-	-	-	-	<b>44.773</b>