



OTOMOTİV SANAYİİ DERNEĐİ
AUTOMOTIVE MANUFACTURERS ASSOCIATION

OTOMOTİV SEKTÖRÜ AYLIK DEĐERLENDİRME RAPORU OCAK 2020

AUTOMOTIVE INDUSTRY MONTHLY REPORT
January 2020

OSD "OICA" Üyesidir @OICA OSD is a Member of "OICA"

	1 - 2019	1 - 2020	%	1 - 1 / 2019	1 - 1 / 2020	%	2/2018 - 1/2019	2/2019 - 1/2020	%
Otomobil Üretimi/P.Cars Production	71.397	75.396	5,6	71.397	75.396	5,6	1.012.600	986.641	-2,6
Toplam Üretim/Total Production	109.854	109.783	-0,1	109.854	109.783	-0,1	1.535.767	1.461.173	-4,9
Otomobil Pazarı/P.Cars Market	10.979	22.016	100,5	10.979	22.016	100,5	470.689	398.293	-15,4
Toplam Pazar/Total Market	14.847	28.025	88,8	14.847	28.025	88,8	619.872	505.125	-18,5
Otomobil İthalatı/P.Cars Import	6.776	13.690	102,0	6.776	13.690	102,0	312.860	236.992	-24,2
Toplam İthalat/Total Import	8.408	16.275	93,6	8.408	16.275	93,6	384.043	284.936	-25,8
Otomobil İhracatı/P.Cars Export	58.807	60.438	2,8	58.807	60.438	2,8	860.546	830.375	-3,5
Toplam İhracat/Total Export	93.428	89.962	-3,7	93.428	89.962	-3,7	1.317.984	1.249.120	-5,2
Otomobil İhracatı(\$)/P.Cars Export (\$)	812.060.647	1.032.919.431	27,2	812.060.647	1.032.919.431	27,2	12.281.519.133	12.085.684.554	-1,6
Toplam İhracat(\$)/Total Export (\$)*	2.380.188.163	2.464.400.434	3,5	2.380.188.163	2.464.400.434	3,5	32.274.960.860	31.314.946.262	-3,0

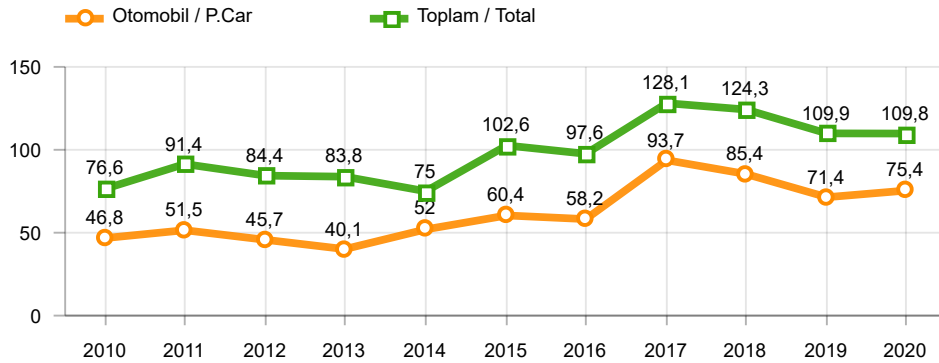
Parametreler/Parameters	1 - 2019	1 - 2020	%	1 - 1 / 2019	1 - 1 / 2020	%	2/2018 - 1/2019	2/2019 - 1/2020	%
ÜFE / PPI	0,5	1,8	-	0,5	1,8	-	32,9	15,7	-
TÜFE / CPI	1,1	1,4	-	1,1	1,4	-	20,4	14,5	-
Sanayi Endeksi / Industry Index	0,5	1,9	-	0,5	1,9	-	29,6	14,7	-
Dolar \$ ** (1 birim)	5,3	6,0	13,1	5,3	6,0	13,1	4,9	5,7	16,2
Euro € ** (1 birim)	6,0	6,6	9,6	6,0	6,6	9,6	5,7	6,4	10,8
Japon Yeni ¥ ** (100 birim)	4,8	5,4	13,1	4,8	5,4	13,1	4,4	5,2	17,8

*Toplam Sanayi / Total Industry Including Components

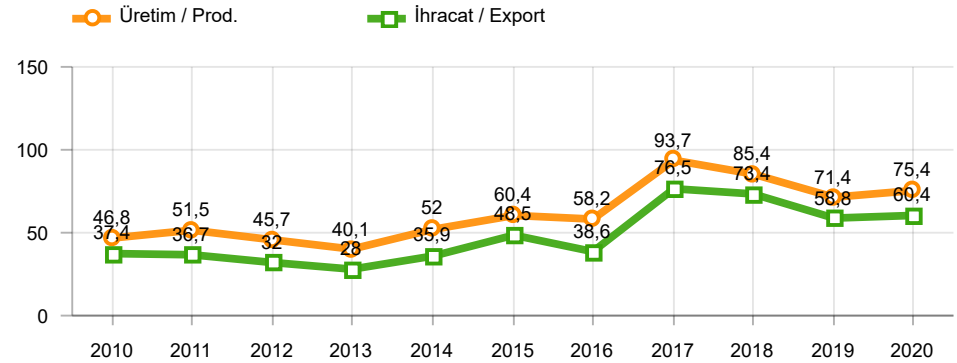
** Ortalama Değerler / Average Values

Araç Tipleri / Types	1 / 2019	1 / 2020	1 % Değişim	1-1 / 2019	1-1 / 2020	1-1 % Değişim
OTOMOBİL / Pass.Car	71.397	75.396	5,6	71.397	75.396	5,6
OTOMOBİL Toplam / Pass.Car Total	71.397	75.396	5,6	71.397	75.396	5,6
B.KAMYON / H. Truck	1.394	572	-59,0	1.394	572	-59,0
K.KAMYON / L. Truck	-	-	-	-	-	-
KAMYONET / Pick Up	31.118	28.197	-9,4	31.118	28.197	-9,4
OTOBÜS / Bus	749	665	-11,2	749	665	-11,2
MİNİBÜS / Minibus	5.062	4.885	-3,5	5.062	4.885	-3,5
MİDİBÜS / Midibus	134	68	-49,3	134	68	-49,3
TİCARİ ARAÇLAR Toplam / Commercial Vehicles Total	38.457	34.387	-10,6	38.457	34.387	-10,6
TAŞIT ARAÇLARI Toplam / Motor Vehicles Total	109.854	109.783	-0,1	109.854	109.783	-0,1
TRAKTÖR / F.Tractor	1.061	2.515	137,0	1.061	2.515	137,0
TRAKTÖR Toplam / F.Tractor Total	1.061	2.515	137,0	1.061	2.515	137,0
GENEL TOPLAM / Grand Total	110.915	112.298	1,2	110.915	112.298	1,2

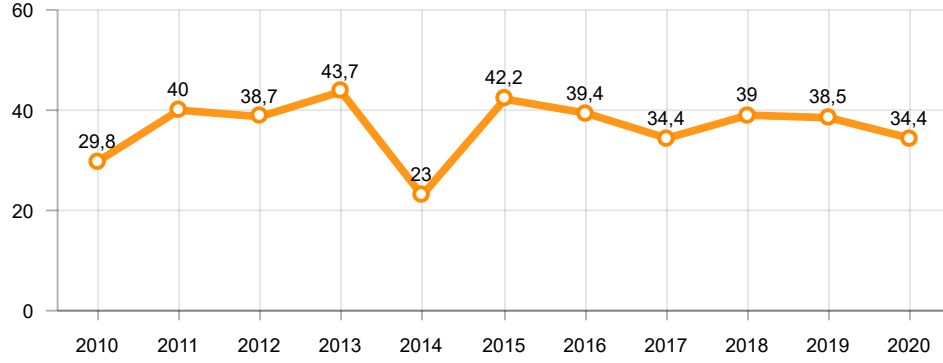
Toplam Üretim ve Otomobil Üretimi (x1000)(OCAK)
Total & P.Cars Production (x1000)(January)



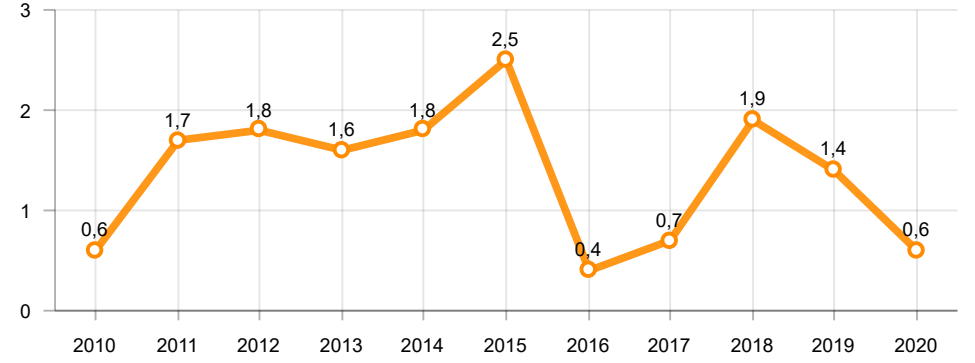
Otomobil Üretimi ve İhracat (x1000)(OCAK)
P.Cars Production & Exports (x1000)(January)



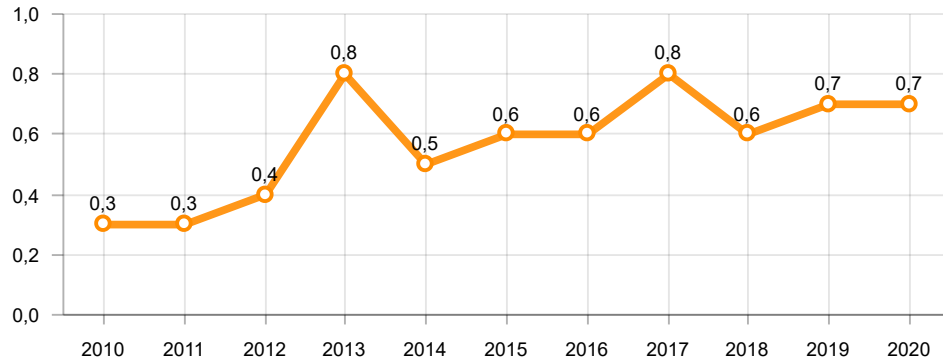
Ticari Araç Üretimi (x1000)(OCAK)
Commercial Vehicle Production (x1000)(January)



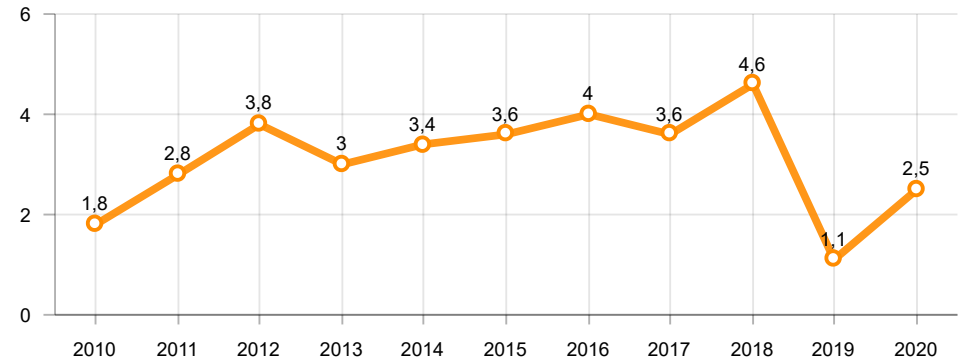
Büyük Kamyon Üretimi (x1000)(OCAK)
Heavy Truck Production (x1000)(January)

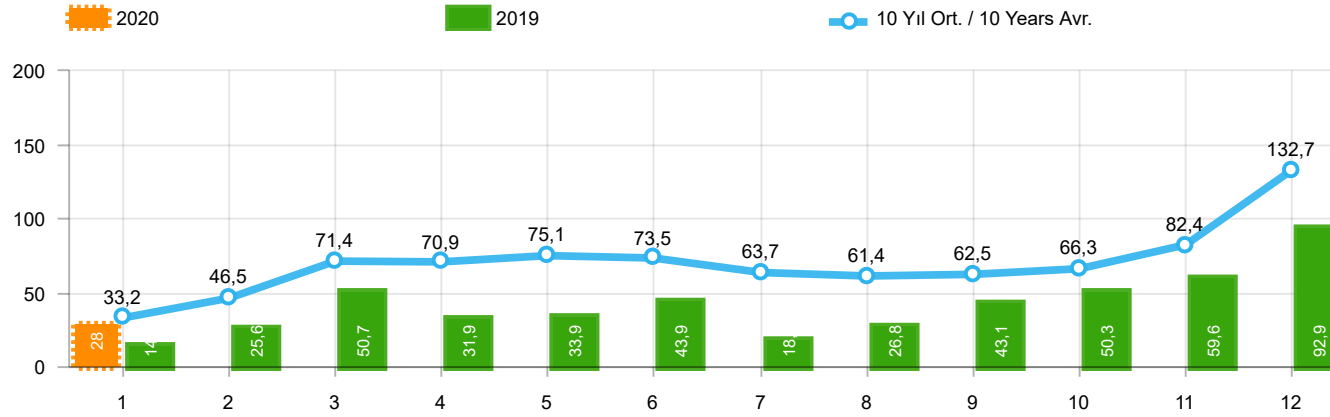


Otobüs Üretimi (x1000)(OCAK)
Bus Production (x1000)(January)



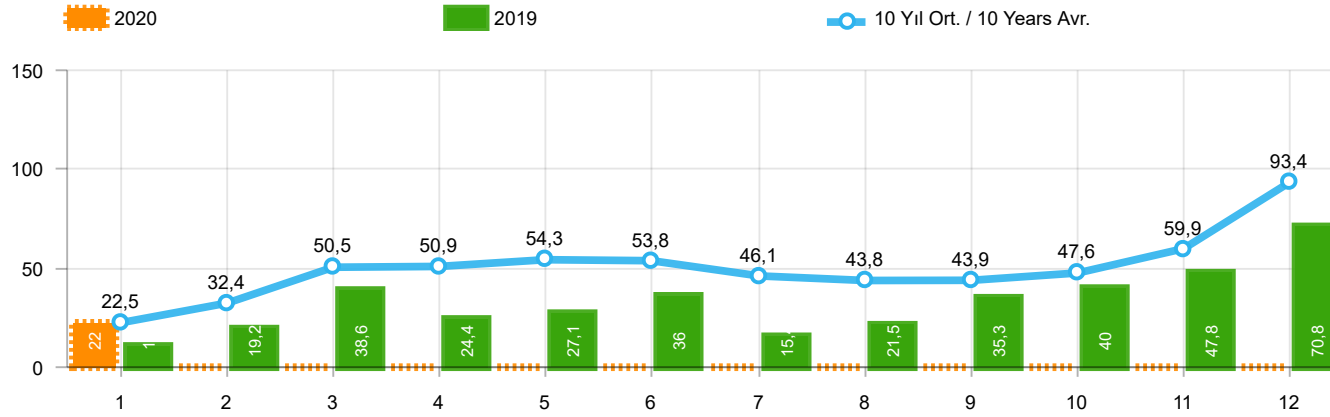
Traktör Üretimi (x1000)(OCAK)
F. Tractor Production (x1000)(January)





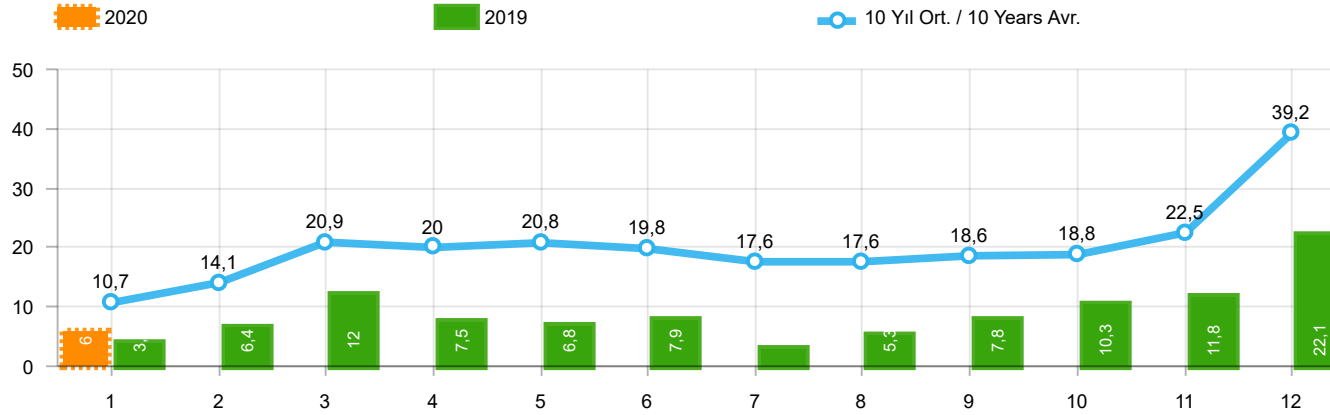
Aylar / Months	10 Yıl Ort / 10 Years Avr.	2020	%
1	33.233	28.025	-15,7
TOPLAM / TOTAL	33.233	28.025	-15,7

Yıl / Year	1	2	3	4	5	6	7	8	9	10	11	12	1-1 Toplam / Total	Toplam / Total	1-1 Yerli / Local	1-1 İthal / Import	İthal Oran / Import %
2010	21.070	32.331	54.019	57.241	61.837	63.511	64.011	64.961	67.040	76.753	77.488	155.234	21.070	795.496	8.833	12.237	58,1
2011	47.759	62.586	84.045	82.782	85.862	85.992	65.658	61.645	64.313	73.227	67.150	134.468	47.759	915.487	19.822	27.937	58,5
2012	31.552	44.138	69.242	66.559	75.195	75.108	65.444	60.982	73.501	62.933	75.203	121.442	31.552	821.299	12.995	18.557	58,8
2013	37.563	51.133	72.943	77.265	85.835	78.043	75.152	67.662	71.388	60.690	83.470	136.048	37.563	897.192	13.747	23.816	63,4
2014	34.751	37.659	51.312	57.113	62.447	64.295	62.770	63.303	70.764	69.742	84.368	154.843	34.751	813.367	11.862	22.889	65,9
2015	37.256	59.221	89.765	96.182	85.804	91.071	87.358	85.244	67.181	67.086	88.431	164.464	37.256	1.019.063	15.309	21.947	58,9
2016	34.369	54.840	85.932	87.748	97.090	94.666	59.732	73.654	69.413	85.666	125.462	145.706	34.369	1.014.278	13.387	20.982	61,0
2017	36.640	48.585	76.178	78.231	88.066	85.820	84.727	74.818	74.046	94.439	103.772	141.507	36.640	986.829	14.813	21.827	59,6
2018	36.525	48.768	79.600	73.886	74.996	52.788	54.194	35.137	23.915	22.321	59.406	80.014	36.525	641.550	14.892	21.633	59,2
2019	14.847	25.569	50.651	31.944	33.947	43.899	18.442	26.832	43.068	50.288	59.575	92.885	14.847	491.947	6.439	8.408	56,6
2020	28.025												28.025	28.025	11.750	16.275	58,1



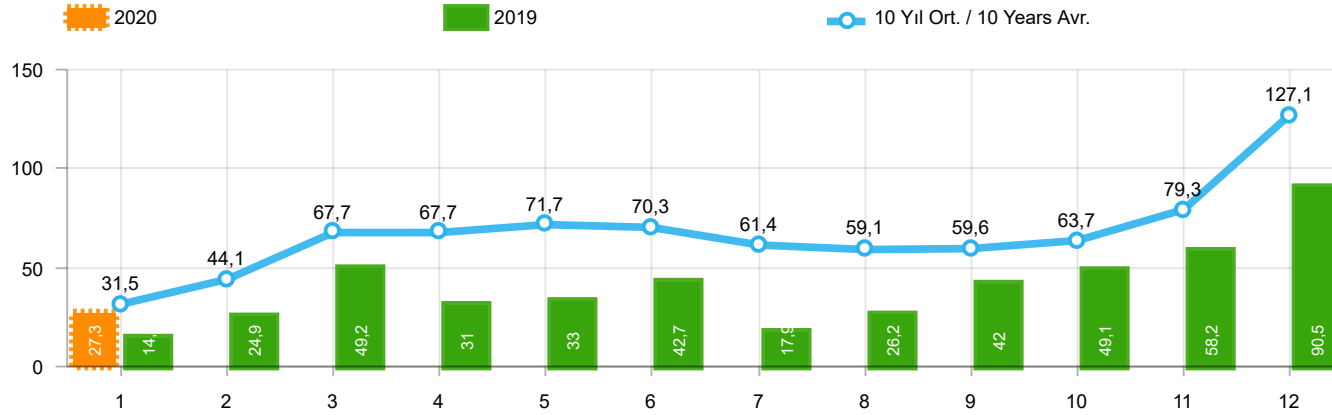
Aylar / Months	10 Yıl Ort. / 10 Years Avr.	2020	%
1	22.488	22.016	-2,1
TOPLAM / TOTAL	22.488	22.016	-2,1

Yıl / Year	1	2	3	4	5	6	7	8	9	10	11	12	1-1 Toplam / Total	Toplam / Total	1-1 Yerli / Local	1-1 İthal / Import	İthal Oran / Import %
2010	12.594	20.651	33.958	36.549	40.467	42.086	41.399	42.222	42.477	47.859	50.061	99.461	12.594	509.784	3.789	8.805	69,9
2011	29.868	39.004	54.023	53.835	56.302	56.714	43.518	38.875	39.964	47.508	44.951	88.957	29.868	593.519	9.237	20.631	69,1
2012	21.077	29.189	47.270	45.645	50.460	50.849	44.531	41.236	49.360	43.440	52.297	80.926	21.077	556.280	7.190	13.887	65,9
2013	25.835	36.814	51.785	56.999	62.383	58.290	55.712	51.611	52.925	46.985	64.117	101.199	25.835	664.655	6.326	19.509	75,5
2014	24.368	27.167	37.812	42.769	46.379	47.278	46.602	45.131	49.262	50.814	59.695	110.054	24.368	587.331	6.160	18.208	74,7
2015	24.498	40.817	61.676	70.211	62.878	67.766	64.218	61.753	47.088	47.954	62.397	114.340	24.498	725.596	7.396	17.102	69,8
2016	23.358	40.588	63.975	65.618	73.832	71.111	45.566	53.977	51.340	63.746	95.783	108.044	23.358	756.938	7.375	15.983	68,4
2017	25.689	34.658	55.616	57.998	65.799	66.164	62.384	54.890	53.423	70.488	75.956	99.694	25.689	722.759	8.793	16.896	65,8
2018	26.611	35.901	59.798	55.108	57.227	41.225	42.024	26.976	17.595	16.809	46.204	60.843	26.611	486.321	9.779	16.832	63,3
2019	10.979	19.205	38.628	24.416	27.126	36.024	15.398	21.544	35.308	39.996	47.803	70.829	10.979	387.256	4.203	6.776	61,7
2020	22.016												22.016	22.016	8.326	13.690	62,2



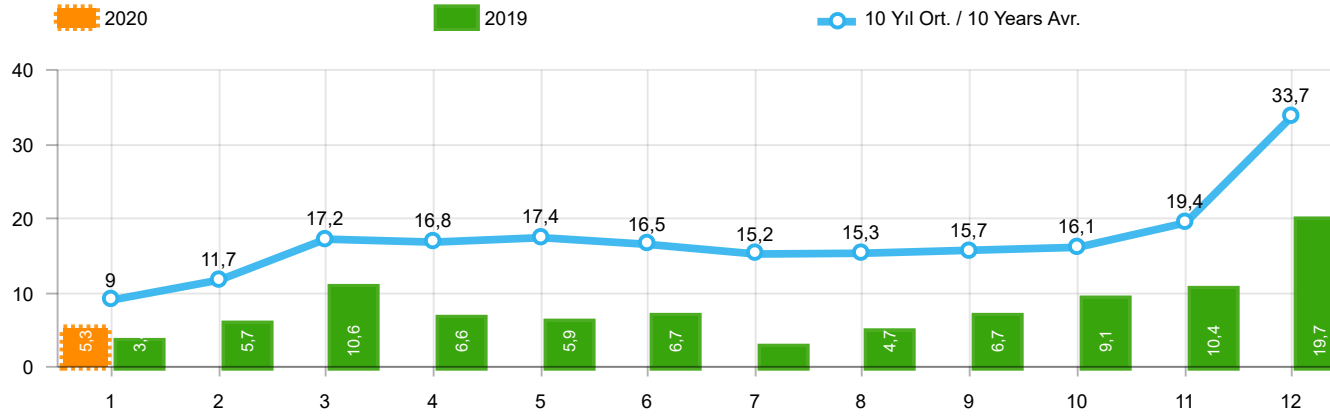
Aylar / Months	10 Yıl Ort / 10 Years Avr.	2020	%
1	10.746	6.009	-44,1
TOPLAM / TOTAL	10.746	6.009	-44,1

Yıl / Year	1	2	3	4	5	6	7	8	9	10	11	12	1-1 Toplam / Total	Toplam / Total	1-1 Yerli / Local	1-1 İthal / Import	İthal Oran / Import %
2010	8.476	11.680	20.061	20.692	21.370	21.425	22.612	22.739	24.563	28.894	27.427	55.773	8.476	285.712	5.044	3.432	40,5
2011	17.891	23.582	30.022	28.947	29.560	29.278	22.140	22.770	24.349	25.719	22.199	45.511	17.891	321.968	10.585	7.306	40,8
2012	10.475	14.949	21.972	20.914	24.735	24.259	20.913	19.746	24.141	19.493	22.906	40.516	10.475	265.019	5.805	4.670	44,6
2013	11.728	14.319	21.158	20.266	23.452	19.753	19.440	16.051	18.463	13.705	19.353	34.849	11.728	232.537	7.421	4.307	36,7
2014	10.383	10.492	13.500	14.344	16.068	17.017	16.168	18.172	21.502	18.928	24.673	44.789	10.383	226.036	5.702	4.681	45,1
2015	12.758	18.404	28.089	25.971	22.926	23.305	23.140	23.491	20.093	19.132	26.034	50.124	12.758	293.467	7.913	4.845	38,0
2016	11.011	14.252	21.957	22.130	23.258	23.555	14.166	19.677	18.073	21.920	29.679	37.662	11.011	257.340	6.012	4.999	45,4
2017	10.951	13.927	20.562	20.233	22.267	19.656	22.343	19.928	20.623	23.951	27.816	41.813	10.951	264.070	6.020	4.931	45,0
2018	9.914	12.867	19.802	18.778	17.769	11.563	12.170	8.161	6.320	5.512	13.202	19.171	9.914	155.229	5.113	4.801	48,4
2019	3.868	6.364	12.023	7.528	6.821	7.875	3.044	5.288	7.760	10.292	11.772	22.056	3.868	104.691	2.236	1.632	42,2
2020	6.009												6.009	6.009	3.424	2.585	43,0



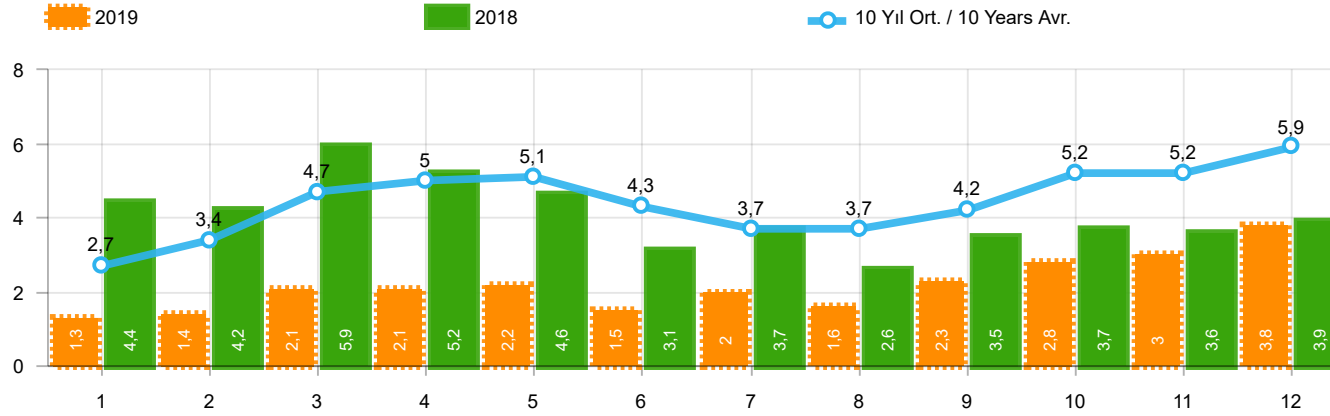
Aylar / Months	10 Yıl Ort / 10 Years Avr.	2020	%
1	31.483	27.273	-13,4
TOPLAM / TOTAL	31.483	27.273	-13,4

Yıl / Year	1	2	3	4	5	6	7	8	9	10	11	12	1-1 Toplam / Total	Toplam / Total	1-1 Yerli / Local	1-1 İthal / Import	İthal Oran / Import %
2010	20.095	31.172	51.769	54.946	59.377	60.896	61.345	61.764	63.814	73.404	73.962	148.369	20.095	760.913	8.005	12.090	60,2
2011	44.892	58.663	78.403	77.695	80.646	81.573	63.044	58.406	60.129	69.421	63.657	127.910	44.892	864.439	18.023	26.869	59,9
2012	29.545	41.324	64.884	62.949	70.863	71.067	62.304	58.148	69.629	59.938	71.710	115.400	29.545	777.761	11.570	17.975	60,8
2013	35.523	48.307	68.774	73.575	81.468	74.096	71.596	65.043	67.963	58.014	79.301	129.718	35.523	853.378	12.216	23.307	65,6
2014	32.670	35.021	47.581	53.305	58.121	60.163	59.907	60.199	66.531	66.573	80.621	146.989	32.670	767.681	10.106	22.564	69,1
2015	34.615	55.331	83.302	91.602	81.542	86.158	83.836	82.577	64.025	64.255	84.601	156.173	34.615	968.017	13.173	21.442	61,9
2016	32.713	52.825	82.948	84.887	93.904	91.540	58.533	71.556	67.593	83.000	122.309	141.912	32.713	983.720	12.190	20.523	62,7
2017	35.323	46.965	73.802	75.988	85.422	83.658	82.297	72.536	71.352	91.752	100.859	136.240	35.323	956.194	13.781	21.542	61,0
2018	35.076	47.009	76.345	71.126	72.755	51.037	52.734	34.346	23.028	21.571	58.204	77.706	35.076	620.937	13.915	21.161	60,3
2019	14.373	24.875	49.221	30.971	33.016	42.688	17.927	26.246	41.992	49.075	58.176	90.500	14.373	479.060	6.068	8.305	57,8
2020	27.273												27.273	27.273	11.239	16.034	58,8



Aylar / Months	10 Yıl Ort. / 10 Years Avr.	2020	%
1	8.995	5.257	-41,6
TOPLAM / TOTAL	8.995	5.257	-41,6

Yıl / Year	1	2	3	4	5	6	7	8	9	10	11	12	1-1 Toplam / Total	Toplam / Total	1-1 Yerli / Local	1-1 İthal / Import	İthal Oran / Import %
2010	7.501	10.521	17.811	18.397	18.910	18.810	19.946	19.542	21.337	25.545	23.901	48.908	7.501	251.129	4.216	3.285	43,8
2011	15.024	19.659	24.380	23.860	24.344	24.859	19.526	19.531	20.165	21.913	18.706	38.953	15.024	270.920	8.786	6.238	41,5
2012	8.468	12.135	17.614	17.304	20.403	20.218	17.773	16.912	20.269	16.498	19.413	34.474	8.468	221.481	4.380	4.088	48,3
2013	9.688	11.493	16.989	16.576	19.085	15.806	15.884	13.432	15.038	11.029	15.184	28.519	9.688	188.723	5.890	3.798	39,2
2014	8.302	7.854	9.769	10.536	11.742	12.885	13.305	15.068	17.269	15.759	20.926	36.935	8.302	180.350	3.946	4.356	52,5
2015	10.117	14.514	21.626	21.391	18.664	18.392	19.618	20.824	16.937	16.301	22.204	41.833	10.117	242.421	5.777	4.340	42,9
2016	9.355	12.237	18.973	19.269	20.072	20.429	12.967	17.579	16.253	19.254	26.526	33.868	9.355	226.782	4.815	4.540	48,5
2017	9.634	12.307	18.186	17.990	19.623	17.494	19.913	17.646	17.929	21.264	24.903	36.546	9.634	233.435	4.988	4.646	48,2
2018	8.465	11.108	16.547	16.018	15.528	9.812	10.710	7.370	5.433	4.762	12.000	16.863	8.465	134.616	4.136	4.329	51,1
2019	3.394	5.670	10.593	6.555	5.890	6.664	2.529	4.702	6.684	9.079	10.373	19.671	3.394	91.804	1.865	1.529	45,1
2020	5.257												5.257	5.257	2.913	2.344	44,6



Aylar / Months	10 Yıl Ort. / 10 Years Avr.	2019	%
1	2.669	1.311	-50,9
2	3.359	1.401	-58,3
3	4.700	2.143	-54,4
4	5.046	2.126	-57,9
5	5.116	2.229	-56,4
6	4.276	1.538	-64,0
7	3.736	2.039	-45,4
8	3.690	1.579	-57,2
9	4.155	2.284	-45,0
10	5.199	2.828	-45,6
11	5.209	3.037	-41,7
12	5.877	3.782	-35,6
TOPLAM / TOTAL	53.032	26.297	-50,4

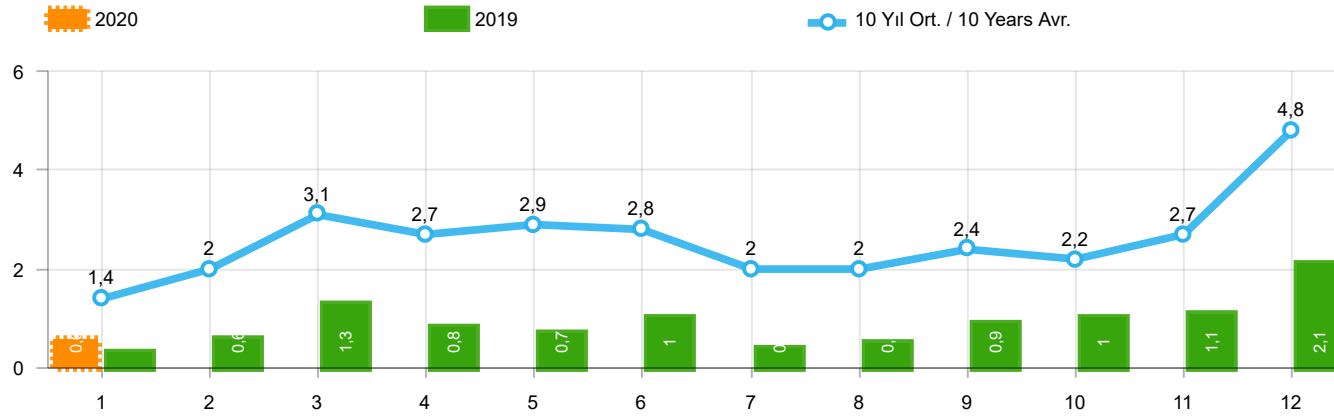
Yıl / Year	1	2	3	4	5	6	7	8	9	10	11	12	1-12 Toplam / Total	Toplam / Total
2009	717	572	688	1.070	1.297	1.256	1.054	1.183	1.117	1.356	1.304	2.144	13.758	13.758
2010	1.111	1.991	2.330	3.039	2.567	2.638	1.965	3.019	2.806	4.424	3.978	6.168	36.036	36.036
2011	2.975	5.242	5.927	5.358	6.016	6.335	4.534	4.051	4.140	5.828	4.943	4.992	60.341	60.341
2012	2.362	1.983	4.348	6.579	6.273	4.569	3.837	3.158	3.618	4.027	4.807	4.757	50.318	50.318
2013	2.161	2.432	4.005	4.585	5.616	3.136	4.574	3.408	4.935	4.762	5.781	6.891	52.286	52.286
2014	2.169	3.512	4.476	4.905	5.094	5.028	4.233	4.920	5.619	5.743	6.250	7.409	59.358	59.358
2015	3.124	3.984	5.460	6.383	6.078	5.748	4.677	5.044	4.765	7.049	6.898	7.564	66.774	66.774
2016	3.739	4.731	7.067	6.546	6.575	5.543	3.833	5.134	4.945	7.372	7.090	7.603	70.178	70.178
2017	3.974	4.964	6.773	6.780	7.057	5.356	5.003	4.396	6.064	7.734	7.457	7.351	72.909	72.909
2018	4.362	4.179	5.925	5.216	4.584	3.146	3.654	2.587	3.541	3.698	3.578	3.886	48.356	48.356
2019	1.311	1.401	2.143	2.126	2.229	1.538	2.039	1.579	2.284	2.828	3.037	3.782	26.297	26.297

Kaynak: TÜİK trafik kayıtları.

Rakamlar, son iki model yılına ait traktör tescillerinden oluşmaktadır.

Source: Turkish Statistical Institute – Traffic registrations

Data represents the last two model year's farm tractors registration figures

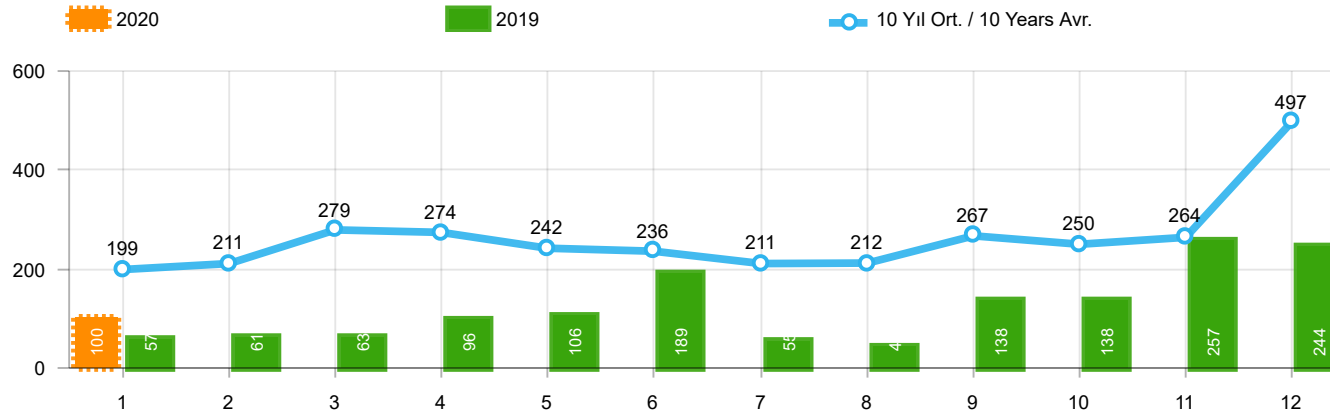


Aylar / Months	10 Yıl Ort / 10 Years Avr.	2020	%
1	1.402	590	-57,9
TOPLAM / TOTAL	1.402	590	-57,9

Yıl / Year	1	2	3	4	5	6	7	8	9	10	11	12	1-1 Toplam / Total	Toplam / Total	1-1 Yerli / Local	1-1 İthal / Import	İthal Oran / Import %
2010	768	960	1.950	1.949	2.140	2.314	2.403	2.754	2.864	3.001	3.231	6.158	768	30.492	622	146	19,0
2011	2.651	3.544	5.142	4.503	4.563	3.852	2.261	2.745	3.784	3.400	3.149	5.712	2.651	45.306	1.585	1.066	40,2
2012	1.703	2.454	3.866	3.209	3.678	3.540	2.750	2.403	3.296	2.497	3.154	5.300	1.703	37.850	1.121	582	34,2
2013	1.484	2.113	3.343	2.925	3.504	3.186	2.777	2.103	2.875	2.086	3.631	5.444	1.484	35.471	977	507	34,2
2014	1.522	2.065	3.094	3.224	3.727	3.726	2.578	2.783	3.708	2.858	3.384	6.869	1.522	39.538	1.197	325	21,4
2015	2.215	3.346	5.699	3.729	3.600	4.253	2.922	2.211	2.687	2.266	3.146	7.307	2.215	43.381	1.710	505	22,8
2016	1.167	1.648	2.515	2.319	2.711	2.623	984	1.796	1.438	2.238	2.485	3.127	1.167	25.051	708	459	39,3
2017	931	1.290	1.982	1.888	2.184	1.891	1.974	1.860	2.284	2.188	2.487	4.438	931	25.397	646	285	30,6
2018	1.237	1.552	2.630	2.328	1.909	1.272	1.235	603	653	488	905	1.695	1.237	16.507	765	472	38,2
2019	342	579	1.255	842	728	981	435	497	854	1.047	1.100	2.087	342	10.747	239	103	30,1
2020	590												590	590	349	241	40,8

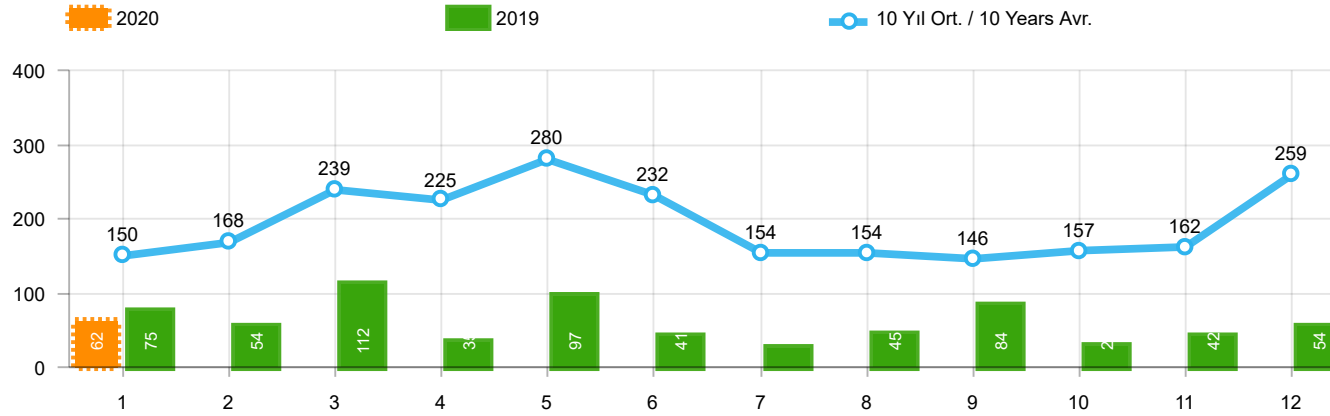
Kaynak: OSD, TAİD, TÜİK

Herhangi bir Dernek üyeliği olmayan markalara ilişkin satış verisi için TÜİK trafik kayıtları esas alınmaktadır. TÜİK trafik kayıtlarının bir ay gecikmeli yayınlanması nedeniyle ilgili markalara ilişkin son ayın satış verisi bir önceki ay ile aynı kabul edilmekte ve bir sonraki ay gerçekleşen veri ile güncellenmektedir.



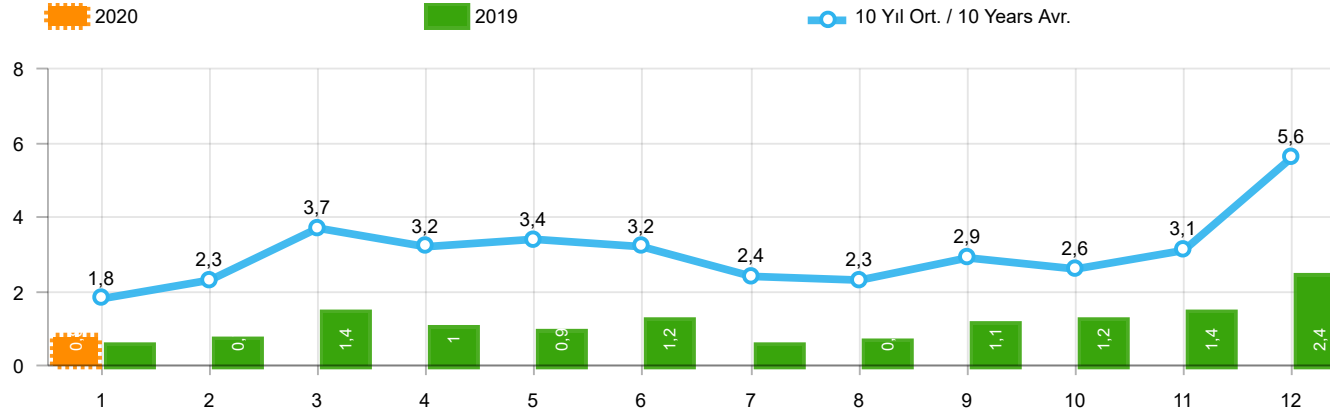
Aylar / Months	10 Yıl Ort / 10 Years Avr.	2020	%
1	199	100	-49,6
TOPLAM / TOTAL	199	100	-49,7

Yıl / Year	1	2	3	4	5	6	7	8	9	10	11	12	1-1 Toplam / Total	Toplam / Total
2010	140	128	172	153	127	124	93	232	199	204	162	382	140	2.116
2011	124	167	267	260	241	233	205	280	270	230	168	525	124	2.970
2012	179	257	277	229	257	239	216	249	325	269	189	398	179	3.084
2013	191	268	289	276	283	241	367	235	305	392	415	697	191	3.959
2014	360	394	384	333	294	258	216	229	395	220	266	653	360	4.002
2015	280	322	451	561	372	405	389	253	316	394	325	621	280	4.689
2016	309	158	251	302	261	196	139	220	241	230	354	431	309	3.092
2017	212	211	227	231	272	156	250	235	318	268	317	594	212	3.291
2018	134	142	410	296	207	315	180	146	160	155	184	425	134	2.754
2019	57	61	63	96	106	189	55	44	138	138	257	244	57	1.448
2020	100												100	100



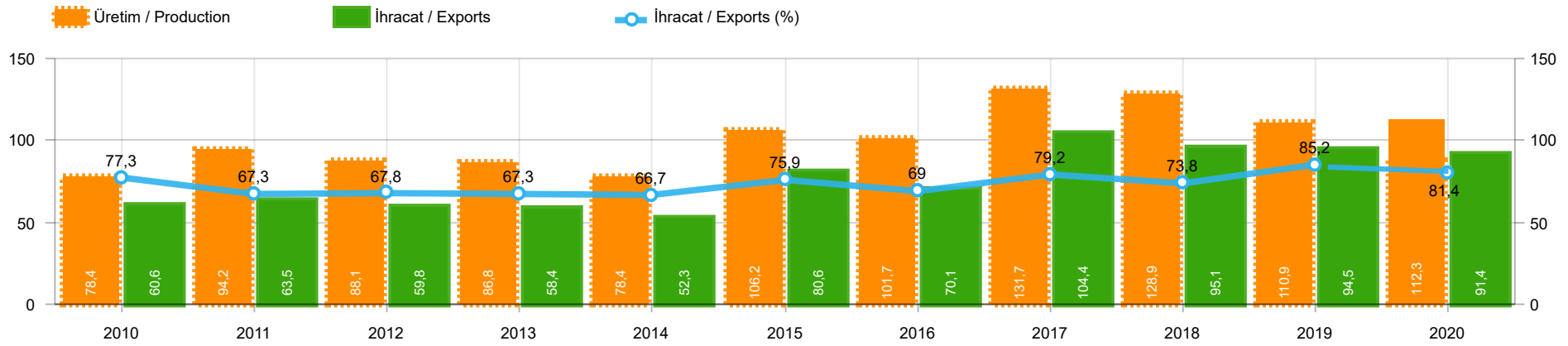
Aylar / Months	10 Yıl Ort / 10 Years Avr.	2020	%
1	150	62	-58,7
TOPLAM / TOTAL	150	62	-58,7

Yıl / Year	1	2	3	4	5	6	7	8	9	10	11	12	1-1 Toplam / Total	Toplam / Total	1-1 Yerli / Local	1-1 İthal / Import	İthal Oran / Import %
2010	67	71	128	193	193	177	170	211	163	144	133	325	67	1.975	66	1	1,5
2011	92	212	233	324	412	334	148	214	130	176	176	321	92	2.772	90	2	2,2
2012	125	103	215	172	397	262	174	182	251	229	150	344	125	2.604	125	-	-
2013	365	445	537	489	580	520	412	281	245	198	123	189	365	4.384	363	2	0,5
2014	199	179	253	251	305	148	69	92	130	91	97	332	199	2.146	199	-	-
2015	146	222	313	290	290	255	211	203	153	171	359	363	146	2.976	146	-	-
2016	180	209	218	240	214	307	76	82	141	198	314	236	180	2.415	180	-	-
2017	174	119	167	124	188	115	206	187	92	231	109	235	174	1.947	174	-	-
2018	78	65	215	136	125	164	45	42	74	107	113	188	78	1.352	78	-	-
2019	75	54	112	35	97	41	25	45	84	28	42	54	75	692	75	-	-
2020	62												62	62	62	-	-



Aylar / Months	10 Yıl Ort / 10 Years Avr.	2020	%
1	1.751	752	-57,0
TOPLAM / TOTAL	1.751	752	-57,1

Yıl / Year	1	2	3	4	5	6	7	8	9	10	11	12	1-1 Toplam / Total	Toplam / Total	1-1 Yerli / Local	1-1 İthal / Import	İthal Oran / Import %
2010	975	1.159	2.250	2.295	2.460	2.615	2.666	3.197	3.226	3.349	3.526	6.865	975	34.583	828	147	15,1
2011	2.867	3.923	5.642	5.087	5.216	4.419	2.614	3.239	4.184	3.806	3.493	6.558	2.867	51.048	1.799	1.068	37,3
2012	2.007	2.814	4.358	3.610	4.332	4.041	3.140	2.834	3.872	2.995	3.493	6.042	2.007	43.538	1.425	582	29,0
2013	2.040	2.826	4.169	3.690	4.367	3.947	3.556	2.619	3.425	2.676	4.169	6.330	2.040	43.814	1.531	509	25,0
2014	2.081	2.638	3.731	3.808	4.326	4.132	2.863	3.104	4.233	3.169	3.747	7.854	2.081	45.686	1.756	325	15,6
2015	2.641	3.890	6.463	4.580	4.262	4.913	3.522	2.667	3.156	2.831	3.830	8.291	2.641	51.046	2.136	505	19,1
2016	1.656	2.015	2.984	2.861	3.186	3.126	1.199	2.098	1.820	2.666	3.153	3.794	1.656	30.558	1.197	459	27,7
2017	1.317	1.620	2.376	2.243	2.644	2.162	2.430	2.282	2.694	2.687	2.913	5.267	1.317	30.635	1.032	285	21,6
2018	1.449	1.759	3.255	2.760	2.241	1.751	1.460	791	887	750	1.202	2.308	1.449	20.613	977	472	32,6
2019	474	694	1.430	973	931	1.211	515	586	1.076	1.213	1.399	2.385	474	12.887	371	103	21,7
2020	752												752	752	511	241	32,0



	2010	2011	2012	2013	2014	2015	2016	2017	2018	2019	2020
İhracat/Export	60.606	63.461	59.778	58.448	52.288	80.630	70.140	104.359	95.115	94.539	91.430
Üretim/Production	78.358	94.232	88.133	86.818	78.444	106.178	101.671	131.740	128.911	110.915	112.298
İhracat/Exports (%)	77,3	67,3	67,8	67,3	66,7	75,9	69	79,2	73,8	85,2	81,4

Taşıt Araçları İhracatı (2018 - 2020)
Motor Vehicle Exports (2018 - 2020)

SEKTÖR / SECTOR	2018	2019	1/1-2019	1/1-2020	2020/2019 %
OTOMOBİL / Pass.Car	875.147	828.744	58.807	60.438	2,8
OTOMOBİL TOPLAM / Pass. Car Total	875.147	828.744	58.807	60.438	2,8
KAMYON / Truck	14.478	14.824	1.270	202	-84,1
KAMYONET / Pick Up	372.954	349.490	27.735	25.435	-8,3
OTOBÜS / Bus	7.708	9.001	798	551	-31,0
MİNİBÜS / Minibus	47.736	49.283	4.741	3.305	-30,3
MİDİBÜS / Midibus	846	1.244	77	31	-59,7
TİCARİ ARAÇLAR TOPLAM / Commercial Vehicle Total	443.722	423.842	34.621	29.524	-14,7
TAŞIT ARAÇLARI TOPLAM / Motor Vehicles Total	1.318.869	1.252.586	93.428	89.962	-3,7
TRAKTÖR / F.Tractor	15.123	15.844	1.111	1.468	32,1
TRAKTÖR TOPLAM / F.Tractor Total	15.123	15.844	1.111	1.468	32,1
GENEL TOPLAM / GRAND TOTAL	1.333.992	1.268.430	94.539	91.430	-3,3

Üretici Bazında İhracat (adet)
Exports by Manufacturer (unit)

Üreticiler / Manufacturers	2018	2019	1-1 / 2019	1-1 / 2020
A.I.O.S.	964	1.433	108	22
FORD OTOSAN	328.502	333.734	28.406	24.963
HATTAT TRAKTÖR	621	637	39	120
HONDA TÜRKİYE	13.699	7.528	800	1.087
HYUNDAI ASSAN	190.347	169.803	11.414	10.700
KARSAN	3.419	2.713	102	39
M. BENZ TÜRK	16.309	16.324	1.417	288
MAN TÜRKİYE	2.425	2.892	298	288
OTOKAR	901	1.156	112	56
OYAK RENAULT	280.411	295.275	20.009	18.323
TEMSA	645	602	68	7
TOFAŞ	243.796	194.107	13.215	12.279
TOYOTA	237.451	227.019	17.479	21.910
TÜRK TRAKTÖR	14.502	15.207	1.072	1.348
GENEL TOPLAM / Grand Total	1.333.992	1.268.430	94.539	91.430

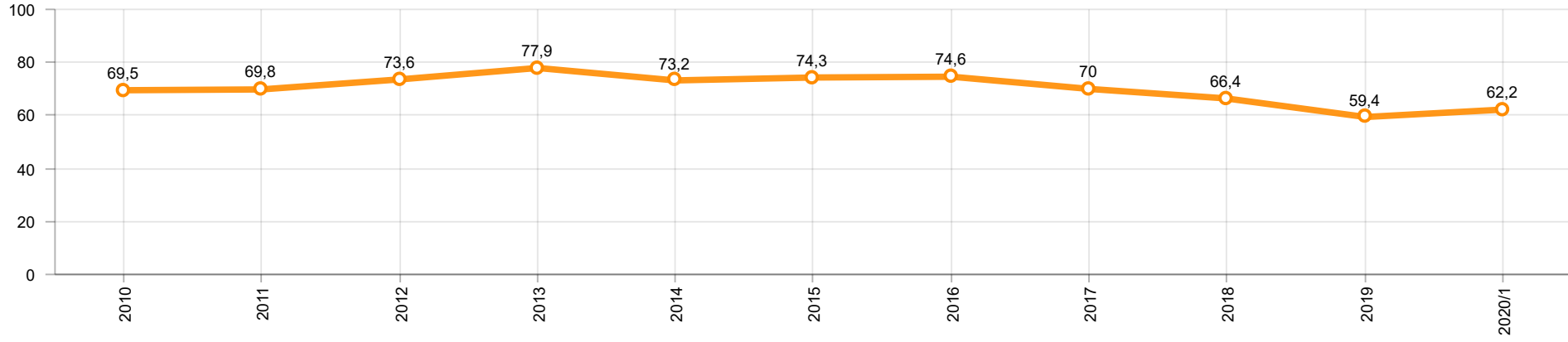
Otomotiv Ana ve Yan Sanayii İhracatı (ABD \$)
CBU and CKD Exports - \$

Sektör / Sector	2018	2019	OCAK / January 2019	OCAK / January 2020	2020 / 2019 %
Toplam Yan Sanayi / Total Component Industry	10.878.550.618	10.617.878.409	884.353.961	879.189.304	-0,6
İç ve Dış Lastik / Tyres	1.353.862.295	1.479.469.475	113.752.558	112.757.392	-0,9
Emniyet Camı / Safety Glasses	151.148.111	150.706.975	11.733.210	12.650.305	7,8
Motor / Engine	581.983.113	518.051.731	44.235.289	46.023.814	4,0
Akümülatör / Batteries	387.879.636	397.638.079	32.280.983	25.466.311	-21,1
Diğer Aksam ve Parça / Spare Parts&Components	8.403.677.463	8.072.012.149	682.351.921	682.291.482	-
Toplam Ana Sanayi / Total Vehicle Industry	21.349.203.156	20.613.852.926	1.495.834.202	1.585.211.130	6,0
Otobüs / Bus	1.503.156.428	1.759.421.232	152.611.319	105.353.422	-31,0
Midibüs-Minibüs / Midibus-Minibus	215.450.022	222.922.952	9.898.306	25.857.153	161,2
Otomobil / P.Cars	12.420.951.066	11.864.837.779	812.060.647	1.032.919.431	27,2
Kamyon-Kamyonet / Truck-Pick Up&Van	5.375.329.018	4.945.381.202	386.685.353	341.218.617	-11,8
Römork ve Yarı Römork / Trailer-Semi Trailer	507.223.886	503.258.885	37.418.294	34.023.818	-9,1
Çekici / Tractor	904.738.051	839.891.843	69.946.093	8.673.952	-87,6
Tarım Traktörü / Farm Tractor	422.354.685	478.139.033	27.214.190	37.164.737	36,6
Toplam / Total	32.227.753.774	31.231.731.335	2.380.188.163	2.464.400.434	3,5

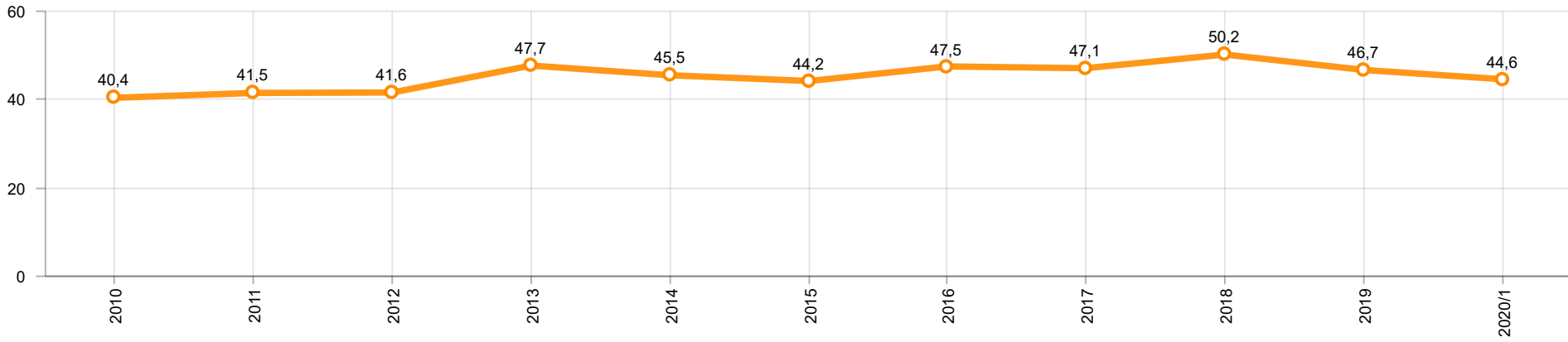
Kaynak: Uludağ İhracatçı Birlikleri . ÜİB tarafından OSD için özel olarak analiz edilen Otomotiv İhracatı kapsamında; ÜİB Türkiye Geneli Otomotiv Endüstrisi sınıflandırmasına kıyasla “Römork ve Yarı Römork” , “Tarım Traktörü” verileri dahil edilmekte; “Kullanılmış Araçlar” ,”İki Tekerlekli Taşıtlar” , “Demiryolu Taşıtları” hariç tutulmaktadır.

Source: Uludağ Exporters Association – Special Analyze for OSD.Compared to Turkish General Automotive Industry classification, this special analyze includes; farms tractors, trailers and semi-trailers, does not include; used vehicles, two-wheeled vehicles and railway vehicles

Otomobil Pazarında İthalatın Payı (%)
Import Share in P.Car Market (%)



Hafif Ticari Araçlar Pazarında İthalatın Payı (%)
Import Share in LCV Market (%)



Araç Tipleri / Vehicle Types	1	2	3	4	5	6	7	8	9	10	11	12	Toplam / Total
OTOMOBİL - Pass.Car	60.438												60.438
KAMYON - H. Truck	202												202
KAMYONET - Pick Up	25.435												25.435
OTOBÜS - Bus	551												551
MİNİBÜS - Minibus	3.305												3.305
MİDİBÜS - Midibus	31												31
TİCARİ ARAÇLAR TOPLAMI - CV Total	29.524												29.524
TAŞIT ARAÇLARI TOPLAMI - MV Total	89.962												89.962
TRAKTÖR - F.Tractor	1.468												1.468
GENEL TOPLAM - Grand Total	91.430												91.430

Otomobil / P.Car

Firmalar / Firms	1	2	3	4	5	6	7	8	9	10	11	12	Toplam / Total
FORD OTOSAN	583	-	-	-	-	-	-	-	-	-	-	-	583
HONDA TÜRKİYE	1.087	-	-	-	-	-	-	-	-	-	-	-	1.087
HYUNDAI ASSAN	10.700	-	-	-	-	-	-	-	-	-	-	-	10.700
OYAK RENAULT	18.323	-	-	-	-	-	-	-	-	-	-	-	18.323
TOFAŞ	7.835	-	-	-	-	-	-	-	-	-	-	-	7.835
TOYOTA	21.910	-	-	-	-	-	-	-	-	-	-	-	21.910
TOPLAM - Total	60.438	-	-	-	-	-	-	-	-	-	-	-	60.438

Kamyonet / Pick-up

Firmalar / Firms	1	2	3	4	5	6	7	8	9	10	11	12	Toplam / Total
FORD OTOSAN	20.932	-	-	-	-	-	-	-	-	-	-	-	20.932
KARSAN	37	-	-	-	-	-	-	-	-	-	-	-	37
OTOKAR	22	-	-	-	-	-	-	-	-	-	-	-	22
TOFAŞ	4.444	-	-	-	-	-	-	-	-	-	-	-	4.444
TOPLAM - Total	25.435	-	-	-	-	-	-	-	-	-	-	-	25.435

Minibüs / Minibus

Firmalar / Firms	1	2	3	4	5	6	7	8	9	10	11	12	Toplam / Total
FORD OTOSAN	3.303	-	-	-	-	-	-	-	-	-	-	-	3.303
KARSAN	2	-	-	-	-	-	-	-	-	-	-	-	2
TOPLAM - Total	3.305	-	-	-	-	-	-	-	-	-	-	-	3.305

Kamyon / Truck

Firmalar / Firms	1	2	3	4	5	6	7	8	9	10	11	12	Toplam / Total
FORD OTOSAN	145	-	-	-	-	-	-	-	-	-	-	-	145
KARSAN	-	-	-	-	-	-	-	-	-	-	-	-	-
M. BENZ TÜRK	57	-	-	-	-	-	-	-	-	-	-	-	57
OTOKAR	-	-	-	-	-	-	-	-	-	-	-	-	-
TOPLAM - Total	202	-	-	-	-	-	-	-	-	-	-	-	202

Midibüs / Midibus

Firmalar / Firms	1	2	3	4	5	6	7	8	9	10	11	12	Toplam / Total
A.I.O.S.	16	-	-	-	-	-	-	-	-	-	-	-	16
KARSAN	-	-	-	-	-	-	-	-	-	-	-	-	-
OTOKAR	15	-	-	-	-	-	-	-	-	-	-	-	15
TEMSA	-	-	-	-	-	-	-	-	-	-	-	-	-
TOPLAM - Total	31	-	-	-	-	-	-	-	-	-	-	-	31

Otobüs / Bus

Firmalar / Firms	1	2	3	4	5	6	7	8	9	10	11	12	Toplam / Total
A.I.O.S.	6	-	-	-	-	-	-	-	-	-	-	-	6
KARSAN	-	-	-	-	-	-	-	-	-	-	-	-	-
M. BENZ TÜRK	231	-	-	-	-	-	-	-	-	-	-	-	231
MAN TÜRKİYE	288	-	-	-	-	-	-	-	-	-	-	-	288
OTOKAR	19	-	-	-	-	-	-	-	-	-	-	-	19
TEMSA	7	-	-	-	-	-	-	-	-	-	-	-	7
TOPLAM - Total	551	-	-	-	-	-	-	-	-	-	-	-	551

Traktör / F.Tractor

Firmalar / Firms	1	2	3	4	5	6	7	8	9	10	11	12	Toplam / Total
HATTAT TRAKTÖR	120	-	-	-	-	-	-	-	-	-	-	-	120
TÜRK TRAKTÖR	1.348	-	-	-	-	-	-	-	-	-	-	-	1.348
TOPLAM - Total	1.468	-	-	-	-	-	-	-	-	-	-	-	1.468

Firmalar / Firms	2019 Toplam / Total	1	2	3	4	5	6	7	8	9	10	11	12	Toplam / Total
Alfa Romeo	253	2	-	-	-	-	-	-	-	-	-	-	-	2
Aston Martin	18	1	-	-	-	-	-	-	-	-	-	-	-	1
Audi	10.024	461	-	-	-	-	-	-	-	-	-	-	-	461
Bentley	9	-	-	-	-	-	-	-	-	-	-	-	-	-
BMW	9.583	251	-	-	-	-	-	-	-	-	-	-	-	251
Citroen	8.827	584	-	-	-	-	-	-	-	-	-	-	-	584
Dacia	17.533	2.261	-	-	-	-	-	-	-	-	-	-	-	2.261
DS	269	10	-	-	-	-	-	-	-	-	-	-	-	10
Ferrari	20	1	-	-	-	-	-	-	-	-	-	-	-	1
Fiat	1.043	7	-	-	-	-	-	-	-	-	-	-	-	7
Ford	12.484	206	-	-	-	-	-	-	-	-	-	-	-	206
Honda	3.108	101	-	-	-	-	-	-	-	-	-	-	-	101
Hyundai	15.460	950	-	-	-	-	-	-	-	-	-	-	-	950
Jaguar	244	-	-	-	-	-	-	-	-	-	-	-	-	-
Jeep	2.123	196	-	-	-	-	-	-	-	-	-	-	-	196
Kia	4.987	325	-	-	-	-	-	-	-	-	-	-	-	325
Lamborghini	9	-	-	-	-	-	-	-	-	-	-	-	-	-
Land Rover	1.371	8	-	-	-	-	-	-	-	-	-	-	-	8
Lexus	85	7	-	-	-	-	-	-	-	-	-	-	-	7
Maserati	45	-	-	-	-	-	-	-	-	-	-	-	-	-
Mazda	417	11	-	-	-	-	-	-	-	-	-	-	-	11
Mercedes-Benz	9.862	504	-	-	-	-	-	-	-	-	-	-	-	504
Mini	1.254	28	-	-	-	-	-	-	-	-	-	-	-	28
Mitsubishi	747	29	-	-	-	-	-	-	-	-	-	-	-	29
Nissan	11.980	757	-	-	-	-	-	-	-	-	-	-	-	757
Opel	16.689	554	-	-	-	-	-	-	-	-	-	-	-	554
Peugeot	23.057	1.338	-	-	-	-	-	-	-	-	-	-	-	1.338
Porsche	361	11	-	-	-	-	-	-	-	-	-	-	-	11
Renault	9.410	185	-	-	-	-	-	-	-	-	-	-	-	185
Seat	5.914	578	-	-	-	-	-	-	-	-	-	-	-	578
Skoda	15.369	884	-	-	-	-	-	-	-	-	-	-	-	884
Smart	44	12	-	-	-	-	-	-	-	-	-	-	-	12
Ssangyong	111	23	-	-	-	-	-	-	-	-	-	-	-	23
Subaru	662	17	-	-	-	-	-	-	-	-	-	-	-	17
Suzuki	2.381	22	-	-	-	-	-	-	-	-	-	-	-	22
Toyota	1.350	30	-	-	-	-	-	-	-	-	-	-	-	30
Volkswagen	38.820	3.292	-	-	-	-	-	-	-	-	-	-	-	3.292
Volvo	4.155	44	-	-	-	-	-	-	-	-	-	-	-	44
GENEL TOPLAM - Grand Total	230.078	13.690	-	-	-	-	-	-	-	-	-	-	-	13.690

Firmalar / Firms	2019 Toplam / Total	1	2	3	4	5	6	7	8	9	10	11	12	Toplam / Total
Citroen	3.206	250	-	-	-	-	-	-	-	-	-	-	-	250
Dacia	2.473	271	-	-	-	-	-	-	-	-	-	-	-	271
Fiat	1.767	176	-	-	-	-	-	-	-	-	-	-	-	176
Ford	1.198	50	-	-	-	-	-	-	-	-	-	-	-	50
Hyundai	1.114	55	-	-	-	-	-	-	-	-	-	-	-	55
Isuzu	75	2	-	-	-	-	-	-	-	-	-	-	-	2
Iveco	1.326	64	-	-	-	-	-	-	-	-	-	-	-	64
Kia	1.355	5	-	-	-	-	-	-	-	-	-	-	-	5
Mercedes-Benz	5.074	219	-	-	-	-	-	-	-	-	-	-	-	219
Mitsubishi	1.880	99	-	-	-	-	-	-	-	-	-	-	-	99
Nissan	1.087	66	-	-	-	-	-	-	-	-	-	-	-	66
Opel	1.370	51	-	-	-	-	-	-	-	-	-	-	-	51
Peugeot	5.804	418	-	-	-	-	-	-	-	-	-	-	-	418
Renault	4.309	171	-	-	-	-	-	-	-	-	-	-	-	171
Ssangyong	260	19	-	-	-	-	-	-	-	-	-	-	-	19
Toyota	939	25	-	-	-	-	-	-	-	-	-	-	-	25
Volkswagen	9.676	403	-	-	-	-	-	-	-	-	-	-	-	403
GENEL TOPLAM - Grand Total	42.913	2.344	-	-	-	-	-	-	-	-	-	-	-	2.344