



OTOMOTİV SANAYİİ DERNEĐİ  
AUTOMOTIVE MANUFACTURERS ASSOCIATION

# OTOMOTİV SEKTÖRÜ AYLIK DEĐERLENDİRME RAPORU MAYIS 2020

AUTOMOTIVE INDUSTRY MONTHLY REPORT  
May 2020

OSD "OICA" Üyesidir © O I C A OSD is a Member of "OICA"

	5 - 2019	5 - 2020	%	1 - 5 / 2019	1 - 5 / 2020	%	6/2018 - 5/2019	6/2019 - 5/2020	%
Otomobil Üretimi/P.Cars Production	96.345	43.264	-55,1	418.626	288.133	-31,2	973.430	852.149	-12,5
Toplam Üretim/Total Production	136.513	63.145	-53,7	625.942	415.454	-33,6	1.464.070	1.250.756	-14,6
Otomobil Pazar/P.Cars Market	27.126	25.073	-7,6	120.354	146.528	21,8	372.030	413.430	11,1
Toplam Pazar/Total Market	33.947	33.245	-2,1	156.958	189.118	20,5	484.733	524.107	8,1
Otomobil İthalatı/P.Cars Import	14.012	14.297	2,0	68.623	93.240	35,9	234.896	254.695	8,4
Toplam İthalat/Total Import	17.012	17.068	0,3	85.045	110.305	29,7	288.728	302.329	4,7
Otomobil İhracatı/P.Cars Export	80.233	31.846	-60,3	356.200	232.781	-34,7	838.825	705.325	-15,9
Toplam İhracat/Total Export	111.863	44.428	-60,3	537.892	331.391	-38,4	1.278.567	1.046.085	-18,2
Otomobil İhracatı(\$)/P.Cars Export (\$)	993.642.608,48	459.697.740,95	-53,7	4.890.959.374	3.471.216.650	-29,0	11.723.957.334	10.445.072.592	-10,9
Toplam İhracat(\$)/Total Export (\$)*	2.820.094.986,78	1.205.167.936,44	-57,3	13.369.368.507	8.955.463.172	-33,0	31.430.288.351	26.816.369.354	-14,7

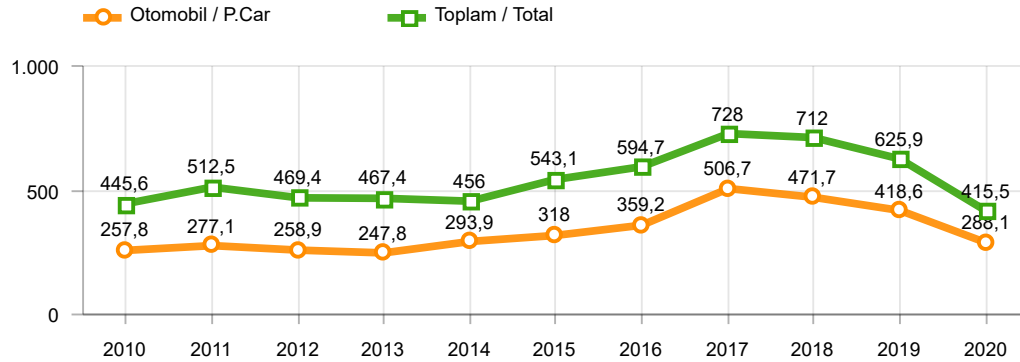
Parametreler/Parameters	5 - 2019	5 - 2020	%	1 - 5 / 2019	1 - 5 / 2020	%	6/2018 - 5/2019	6/2019 - 5/2020	%
ÜFE / PPI	2,7	1,5	-	8,0	6,2	-	32,9	9,1	-
TÜFE / CPI	1,0	1,4	-	5,0	4,6	-	19,9	12,1	-
Sanayi Endeksi / Industry Index	2,9	1,6	-	8,7	6,6	-	31,4	8,3	-
Dolar \$ ** (1 birim)	5,9	6,9	17,6	5,5	6,4	16,0	5,4	6,0	10,4
Euro € ** (1 birim)	6,6	7,6	14,5	6,3	7,1	12,7	6,2	6,7	6,6
Japon Yeni ¥ ** (100 birim)	5,3	6,5	21,0	5,0	5,9	18,6	4,9	5,5	13,6

\*Toplam Sanayi / Total Industry Including Components

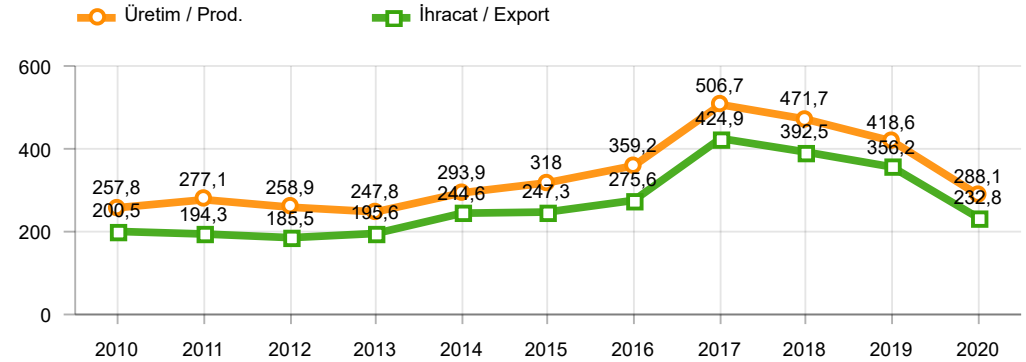
\*\* Ortalama Değerler / Average Values

Araç Tipleri / Types	5 / 2019	5 / 2020	5 % Değişim	1-5 / 2019	1-5 / 2020	1-5 % Değişim
OTOMOBİL / Pass.Car	96.345	43.264	-55,1	418.626	288.133	-31,2
<b>OTOMOBİL Toplam / Pass.Car Total</b>	<b>96.345</b>	<b>43.264</b>	<b>-55,1</b>	<b>418.626</b>	<b>288.133</b>	<b>-31,2</b>
B.KAMYON / H. Truck	1.347	1.071	-20,5	7.148	5.449	-23,8
K.KAMYON / L. Truck	64	66	3,1	343	462	34,7
KAMYONET / Pick Up	33.727	14.768	-56,2	170.060	100.541	-40,9
OTOBÜS / Bus	902	522	-42,1	4.026	2.910	-27,7
MİNİBÜS / Minibus	3.880	3.328	-14,2	24.842	17.225	-30,7
MİDİBÜS / Midibus	248	126	-49,2	897	734	-18,2
<b>TİCARİ ARAÇLAR Toplam / Commercial Vehicles Total</b>	<b>40.168</b>	<b>19.881</b>	<b>-50,5</b>	<b>207.316</b>	<b>127.321</b>	<b>-38,6</b>
<b>TAŞIT ARAÇLARI Toplam / Motor Vehicles Total</b>	<b>136.513</b>	<b>63.145</b>	<b>-53,7</b>	<b>625.942</b>	<b>415.454</b>	<b>-33,6</b>
TRAKTÖR / F.Tractor	2.046	1.900	-7,1	8.982	10.350	15,2
<b>TRAKTÖR Toplam / F.Tractor Total</b>	<b>2.046</b>	<b>1.900</b>	<b>-7,1</b>	<b>8.982</b>	<b>10.350</b>	<b>15,2</b>
<b>GENEL TOPLAM / Grand Total</b>	<b>138.559</b>	<b>65.045</b>	<b>-53,1</b>	<b>634.924</b>	<b>425.804</b>	<b>-32,9</b>

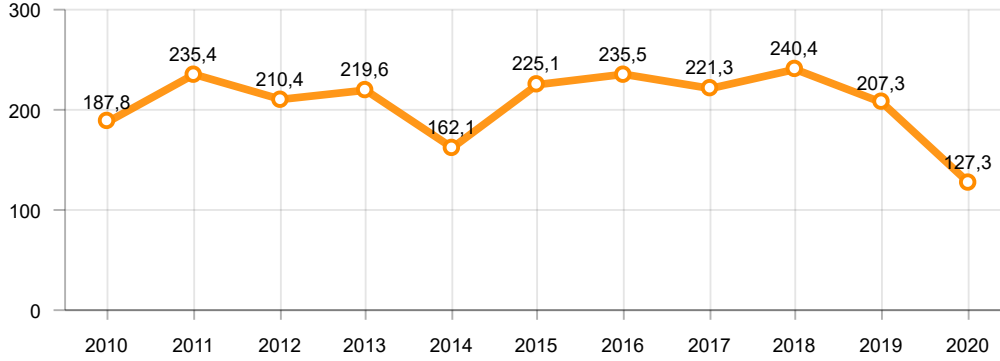
Toplam Üretim ve Otomobil Üretimi (x1000)(OCAK - MAYIS)  
Total & P.Cars Production (x1000)(January - May)



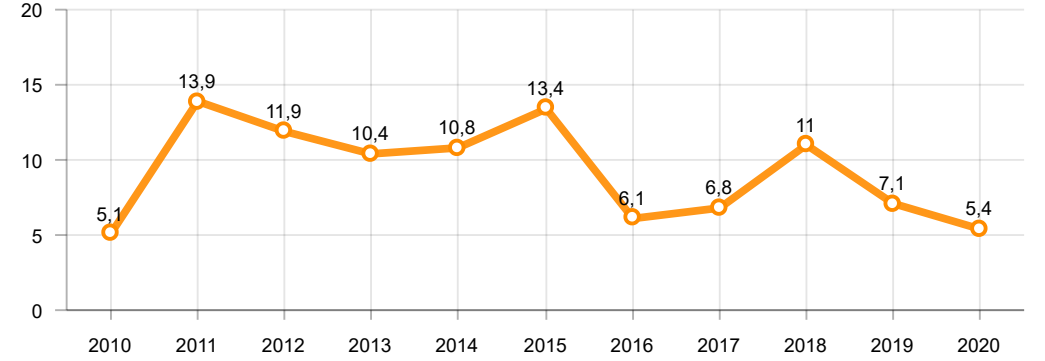
Otomobil Üretimi ve İhracat (x1000)(OCAK - MAYIS)  
P.Cars Production & Exports (x1000)(January - May)



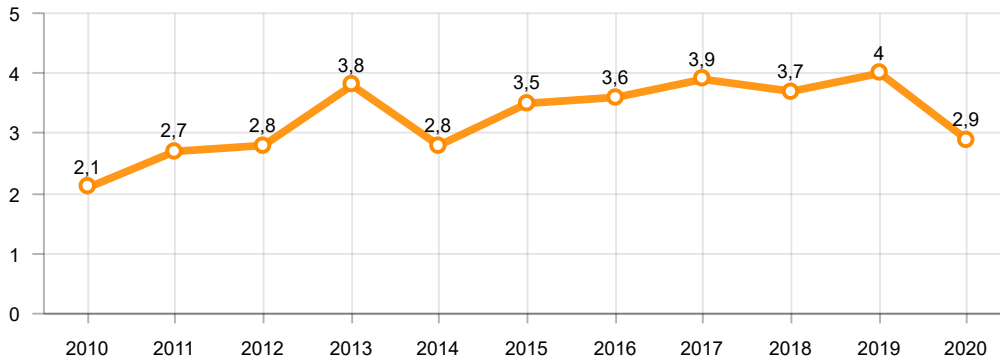
**Ticari Araç Üretimi (x1000)(OCAK - MAYIS)**  
Commercial Vehicle Production (x1000)(January - May)



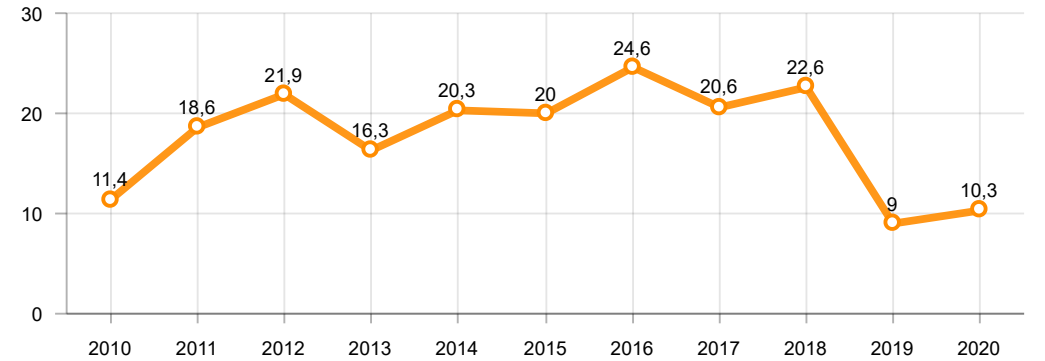
**Büyük Kamyon Üretimi (x1000)(OCAK - MAYIS)**  
Heavy Truck Production (x1000)(January - May)

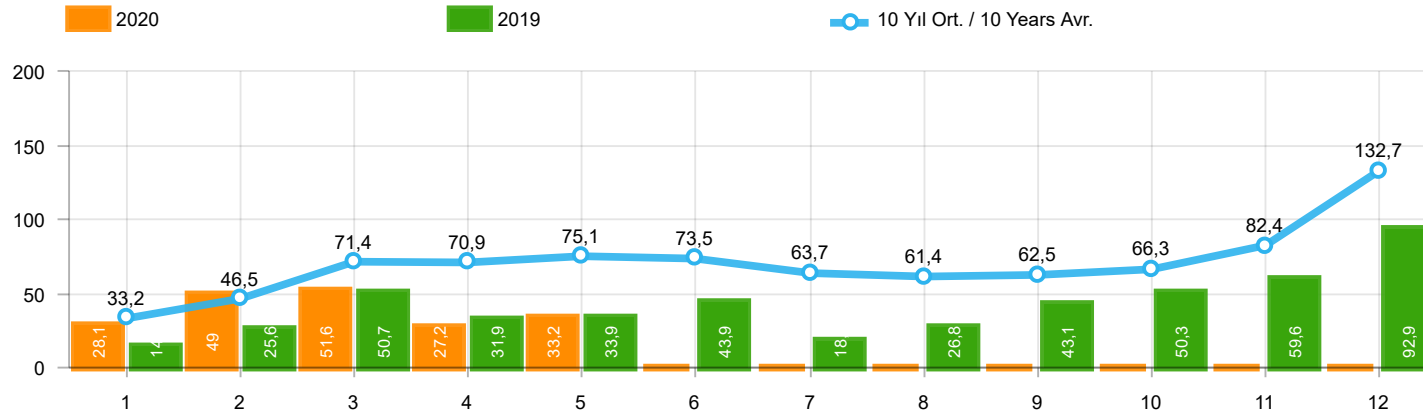


**Otobüs Üretimi (x1000)(OCAK - MAYIS)**  
Bus Production (x1000)(January - May)



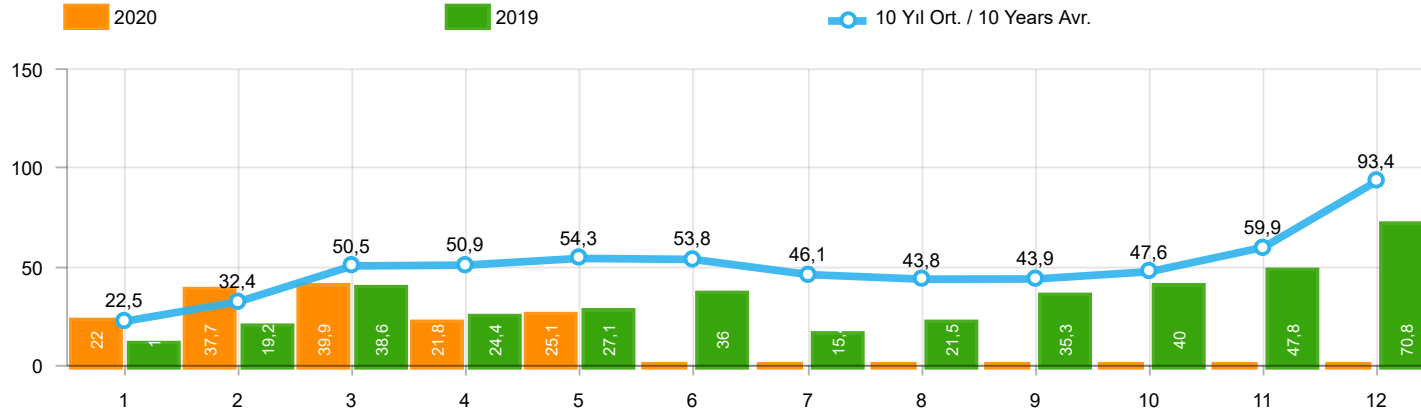
**Traktör Üretimi (x1000)(OCAK - MAYIS)**  
F. Tractor Production (x1000)(January - May)





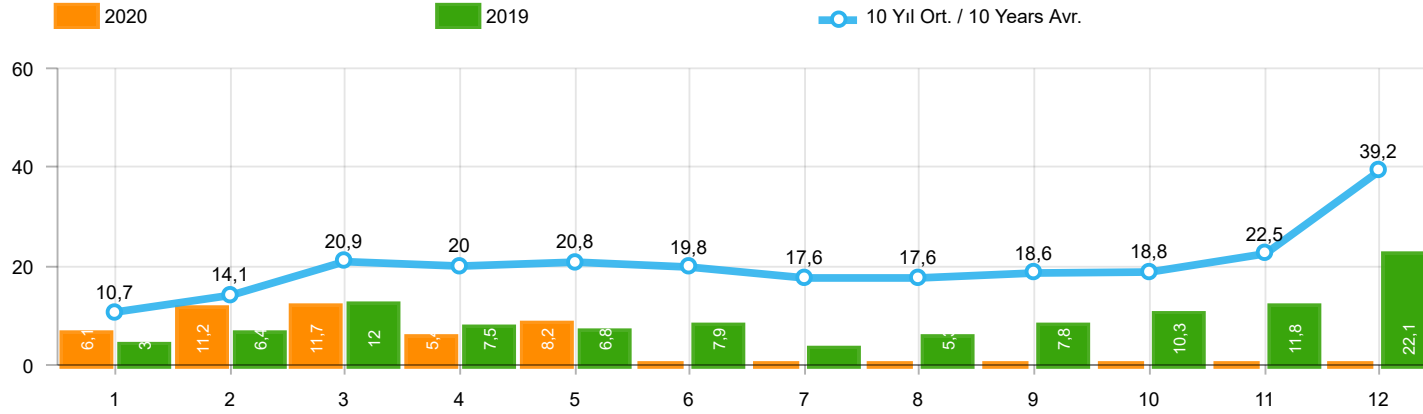
Aylar / Months	10 Yıl Ort / 10 Years Avr.	2020	%
1	33.233	28.123	-15,4
2	46.483	48.974	5,4
3	71.368	51.555	-27,8
4	70.895	27.221	-61,6
5	75.107	33.245	-55,7
TOPLAM/TOTAL	297.087	189.118	-36,3

Yıl / Year	1	2	3	4	5	6	7	8	9	10	11	12	1-5 Toplam / Total	Toplam / Total	1-5 Yerli / Local	1-5 İthal / Import	İthal Oran / Import %
2010	21.070	32.331	54.019	57.241	61.837	63.511	64.011	64.961	67.040	76.753	77.488	155.234	226.498	795.496	96.602	129.896	57,3
2011	47.759	62.586	84.045	82.782	85.862	85.992	65.658	61.645	64.313	73.227	67.150	134.468	363.034	915.487	145.908	217.126	59,8
2012	31.552	44.138	69.242	66.559	75.195	75.108	65.444	60.982	73.501	62.933	75.203	121.442	286.686	821.299	112.240	174.446	60,8
2013	37.563	51.133	72.943	77.265	85.835	78.043	75.152	67.662	71.388	60.690	83.470	136.048	324.739	897.192	102.453	222.286	68,5
2014	34.751	37.659	51.312	57.113	62.447	64.295	62.770	63.303	70.764	69.742	84.368	154.843	243.282	813.367	80.931	162.351	66,7
2015	37.256	59.221	89.765	96.182	85.804	91.071	87.358	85.244	67.181	67.086	88.431	164.464	368.228	1.019.063	132.229	235.999	64,1
2016	34.369	54.840	85.932	87.748	97.090	94.666	59.732	73.654	69.413	85.666	125.462	145.706	359.979	1.014.278	122.735	237.244	65,9
2017	36.640	48.585	76.178	78.231	88.066	85.820	84.727	74.818	74.046	94.439	103.772	141.507	327.700	986.829	120.781	206.919	63,1
2018	36.525	48.768	79.600	73.886	74.996	52.788	54.194	35.137	23.915	22.321	59.406	80.014	313.775	641.550	120.190	193.585	61,7
2019	14.847	25.569	50.651	31.944	33.947	43.899	18.442	26.832	43.068	50.288	59.575	92.885	156.958	491.947	71.913	85.045	54,2
2020	28.123	48.974	51.555	27.221	33.245								189.118	189.118	78.813	110.305	58,3



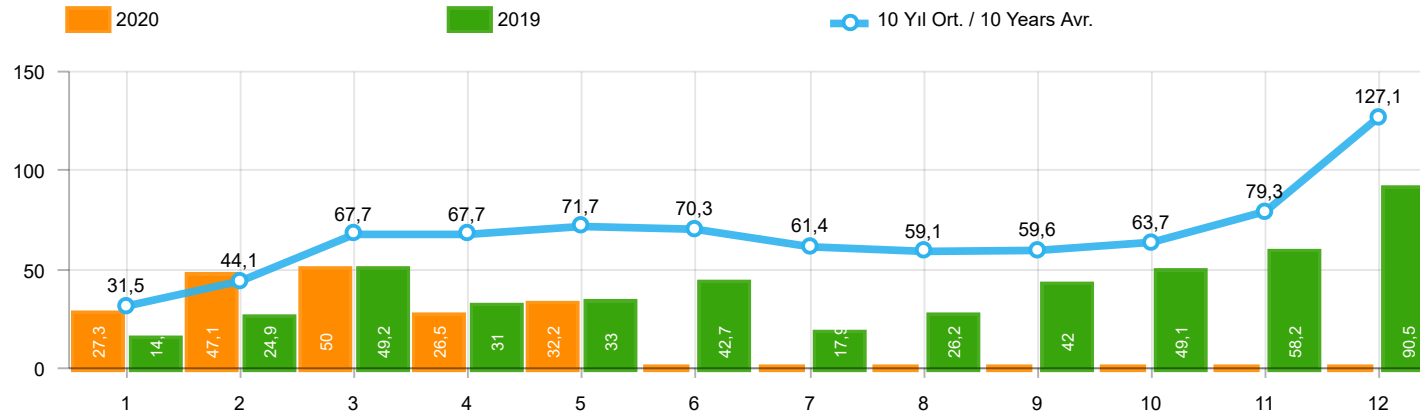
Aylar / Months	10 Yıl Ort / 10 Years Avr.	2020	%
1	22.488	22.016	-2,1
2	32.399	37.727	16,4
3	50.454	39.887	-20,9
4	50.915	21.825	-57,1
5	54.285	25.073	-53,8
TOPLAM / TOTAL	210.541	146.528	-30,4

Yıl / Year	1	2	3	4	5	6	7	8	9	10	11	12	1-5 Toplam / Total	Toplam / Total	1-5 Yerli / Local	1-5 İthal / Import	İthal Oran / Import %
2010	12.594	20.651	33.958	36.549	40.467	42.086	41.399	42.222	42.477	47.859	50.061	99.461	144.219	509.784	46.102	98.117	68,0
2011	29.868	39.004	54.023	53.835	56.302	56.714	43.518	38.875	39.964	47.508	44.951	88.957	233.032	593.519	71.737	161.295	69,2
2012	21.077	29.189	47.270	45.645	50.460	50.849	44.531	41.236	49.360	43.440	52.297	80.926	193.641	556.280	57.141	136.500	70,5
2013	25.835	36.814	51.785	56.999	62.383	58.290	55.712	51.611	52.925	46.985	64.117	101.199	233.816	664.655	50.678	183.138	78,3
2014	24.368	27.167	37.812	42.769	46.379	47.278	46.602	45.131	49.262	50.814	59.695	110.054	178.495	587.331	44.465	134.030	75,1
2015	24.498	40.817	61.676	70.211	62.878	67.766	64.218	61.753	47.088	47.954	62.397	114.340	260.080	725.596	66.708	193.372	74,4
2016	23.358	40.588	63.975	65.618	73.832	71.111	45.566	53.977	51.340	63.746	95.783	108.044	267.371	756.938	71.260	196.111	73,3
2017	25.689	34.658	55.616	57.998	65.799	66.164	62.384	54.890	53.423	70.488	75.956	99.694	239.760	722.759	73.870	165.890	69,2
2018	26.611	35.901	59.798	55.108	57.227	41.225	42.024	26.976	17.595	16.809	46.204	60.843	234.645	486.321	78.002	156.643	66,8
2019	10.979	19.205	38.628	24.416	27.126	36.024	15.398	21.544	35.308	39.996	47.803	70.829	120.354	387.256	51.731	68.623	57,0
2020	22.016	37.727	39.887	21.825	25.073								146.528	146.528	53.288	93.240	63,6



Aylar / Months	10 Yıl Ort / 10 Years Avr.	2020	%
1	10.746	6.107	-43,2
2	14.084	11.247	-20,1
3	20.915	11.668	-44,2
4	19.980	5.396	-73,0
5	20.823	8.172	-60,8
TOPLAM / TOTAL	86.547	42.590	-50,8

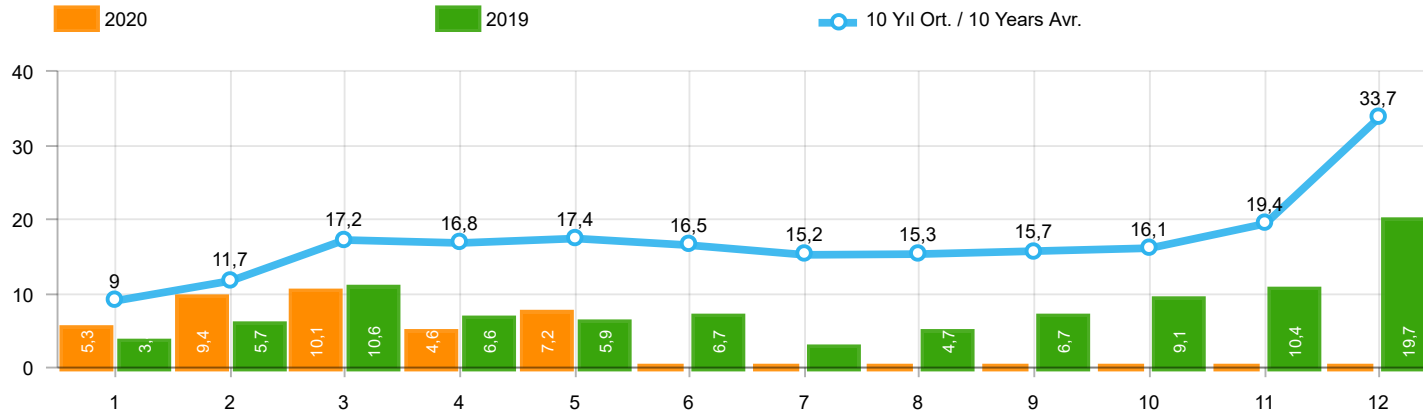
Yıl / Year	1	2	3	4	5	6	7	8	9	10	11	12	1-5 Toplam / Total	Toplam / Total	1-5 Yerli / Local	1-5 İthal / Import	İthal Oran / Import %
2010	8.476	11.680	20.061	20.692	21.370	21.425	22.612	22.739	24.563	28.894	27.427	55.773	82.279	285.712	50.500	31.779	38,6
2011	17.891	23.582	30.022	28.947	29.560	29.278	22.140	22.770	24.349	25.719	22.199	45.511	130.002	321.968	74.171	55.831	42,9
2012	10.475	14.949	21.972	20.914	24.735	24.259	20.913	19.746	24.141	19.493	22.906	40.516	93.045	265.019	55.099	37.946	40,8
2013	11.728	14.319	21.158	20.266	23.452	19.753	19.440	16.051	18.463	13.705	19.353	34.849	90.923	232.537	51.775	39.148	43,1
2014	10.383	10.492	13.500	14.344	16.068	17.017	16.168	18.172	21.502	18.928	24.673	44.789	64.787	226.036	36.466	28.321	43,7
2015	12.758	18.404	28.089	25.971	22.926	23.305	23.140	23.491	20.093	19.132	26.034	50.124	108.148	293.467	65.521	42.627	39,4
2016	11.011	14.252	21.957	22.130	23.258	23.555	14.166	19.677	18.073	21.920	29.679	37.662	92.608	257.340	51.475	41.133	44,4
2017	10.951	13.927	20.562	20.233	22.267	19.656	22.343	19.928	20.623	23.951	27.816	41.813	87.940	264.070	46.911	41.029	46,7
2018	9.914	12.867	19.802	18.778	17.769	11.563	12.170	8.161	6.320	5.512	13.202	19.171	79.130	155.229	42.188	36.942	46,7
2019	3.868	6.364	12.023	7.528	6.821	7.875	3.044	5.288	7.760	10.292	11.772	22.056	36.604	104.691	20.182	16.422	44,9
2020	6.107	11.247	11.668	5.396	8.172								42.590	42.590	25.525	17.065	40,1



Aylar / Months	10 Yıl Ort / 10 Years Avr.	2020	%
1	31.483	27.273	-13,4
2	44.149	47.122	6,7
3	67.703	50.008	-26,1
4	67.704	26.457	-60,9
5	71.711	32.235	-55,0
TOPLAM / TOTAL	282.750	183.095	-35,3

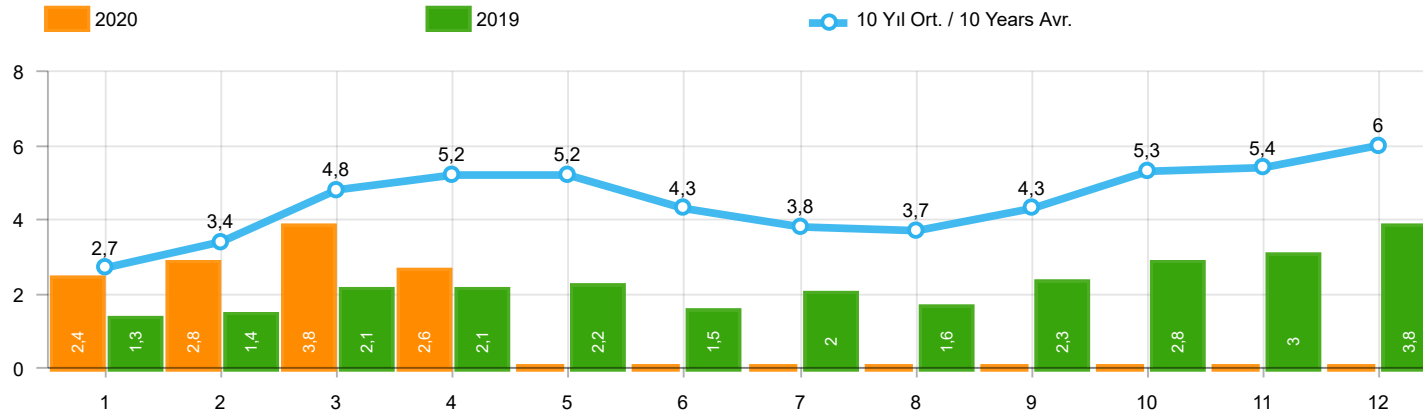
Yıl / Year	1	2	3	4	5	6	7	8	9	10	11	12	1-5 Toplam / Total	Toplam / Total	1-5 Yerli / Local	1-5 İthal / Import	İthal Oran / Import %
2010	20.095	31.172	51.769	54.946	59.377	60.896	61.345	61.764	63.814	73.404	73.962	148.369	217.359	760.913	89.649	127.710	58,8
2011	44.892	58.663	78.403	77.695	80.646	81.573	63.044	58.406	60.129	69.421	63.657	127.910	340.299	864.439	130.691	209.608	61,6
2012	29.545	41.324	64.884	62.949	70.863	71.067	62.304	58.148	69.629	59.938	71.710	115.400	269.565	777.761	99.558	170.007	63,1
2013	35.523	48.307	68.774	73.575	81.468	74.096	71.596	65.043	67.963	58.014	79.301	129.718	307.647	853.378	89.334	218.313	71,0
2014	32.670	35.021	47.581	53.305	58.121	60.163	59.907	60.199	66.531	66.573	80.621	146.989	226.698	767.681	67.992	158.706	70,0
2015	34.615	55.331	83.302	91.602	81.542	86.158	83.836	82.577	64.025	64.255	84.601	156.173	346.392	968.017	115.859	230.533	66,6
2016	32.713	52.825	82.948	84.887	93.904	91.540	58.533	71.556	67.593	83.000	122.309	141.912	347.277	983.720	113.643	233.634	67,3
2017	35.323	46.965	73.802	75.988	85.422	83.658	82.297	72.536	71.352	91.752	100.859	136.240	317.500	956.194	112.998	204.502	64,4
2018	35.076	47.009	76.345	71.126	72.755	51.037	52.734	34.346	23.028	21.571	58.204	77.706	302.311	620.937	112.694	189.617	62,7
2019	14.373	24.875	49.221	30.971	33.016	42.688	17.927	26.246	41.992	49.075	58.176	90.500	152.456	479.060	68.823	83.633	54,9
2020	27.273	47.122	50.008	26.457	32.235								183.095	183.095	74.480	108.615	59,3





Aylar / Months	10 Yıl Ort. / 10 Years Avr.	2020	%
1	8.995	5.257	-41,6
2	11.750	9.395	-20,0
3	17.249	10.121	-41,3
4	16.790	4.632	-72,4
5	17.426	7.162	-58,9
TOPLAM / TOTAL	72.209	36.567	-49,4

Yıl / Year	1	2	3	4	5	6	7	8	9	10	11	12	1-5 Toplam / Total	Toplam / Total	1-5 Yerli / Local	1-5 İthal / Import	İthal Oran / Import %
2010	7.501	10.521	17.811	18.397	18.910	18.810	19.946	19.542	21.337	25.545	23.901	48.908	73.140	251.129	43.547	29.593	40,5
2011	15.024	19.659	24.380	23.860	24.344	24.859	19.526	19.531	20.165	21.913	18.706	38.953	107.267	270.920	58.954	48.313	45,0
2012	8.468	12.135	17.614	17.304	20.403	20.218	17.773	16.912	20.269	16.498	19.413	34.474	75.924	221.481	42.417	33.507	44,1
2013	9.688	11.493	16.989	16.576	19.085	15.806	15.884	13.432	15.038	11.029	15.184	28.519	73.831	188.723	38.656	35.175	47,6
2014	8.302	7.854	9.769	10.536	11.742	12.885	13.305	15.068	17.269	15.759	20.926	36.935	48.203	180.350	23.527	24.676	51,2
2015	10.117	14.514	21.626	21.391	18.664	18.392	19.618	20.824	16.937	16.301	22.204	41.833	86.312	242.421	49.151	37.161	43,1
2016	9.355	12.237	18.973	19.269	20.072	20.429	12.967	17.579	16.253	19.254	26.526	33.868	79.906	226.782	42.383	37.523	47,0
2017	9.634	12.307	18.186	17.990	19.623	17.494	19.913	17.646	17.929	21.264	24.903	36.546	77.740	233.435	39.128	38.612	49,7
2018	8.465	11.108	16.547	16.018	15.528	9.812	10.710	7.370	5.433	4.762	12.000	16.863	67.666	134.616	34.692	32.974	48,7
2019	3.394	5.670	10.593	6.555	5.890	6.664	2.529	4.702	6.684	9.079	10.373	19.671	32.102	91.804	17.092	15.010	46,8
2020	5.257	9.395	10.121	4.632	7.162								36.567	36.567	21.192	15.375	42,0



Aylar / Months	10 Yıl Ort. / 10 Years Avr.	2020	%
1	2.729	2.425	-11,1
2	3.442	2.778	-19,3
3	4.845	3.771	-22,2
4	5.152	2.606	-49,4
TOPLAM / TOTAL	16.168	11.580	-28,4

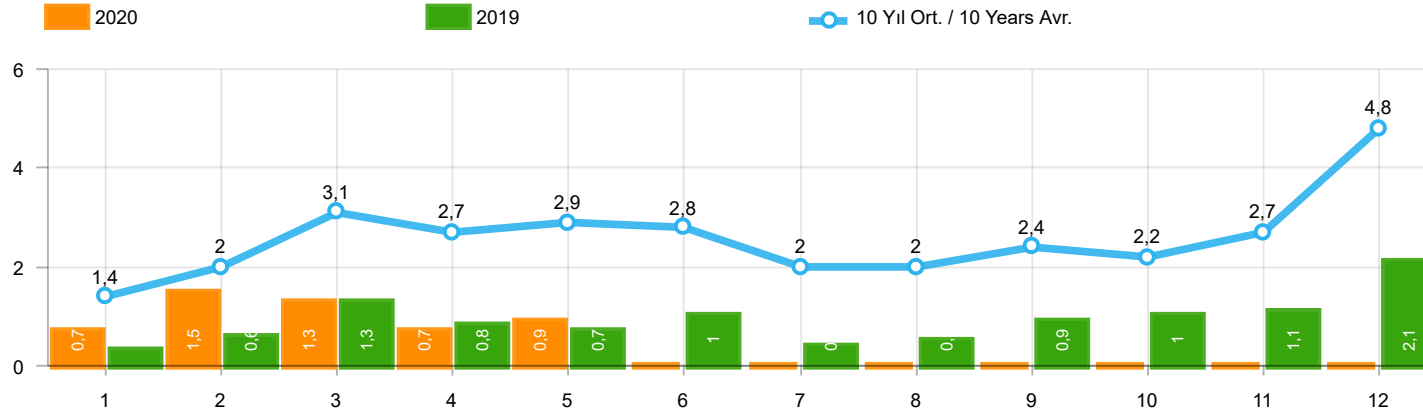
Yıl / Year	1	2	3	4	5	6	7	8	9	10	11	12	1-4 Toplam / Total	Toplam / Total
2010	1.111	1.991	2.330	3.039	2.567	2.638	1.965	3.019	2.806	4.424	3.978	6.168	8.471	36.036
2011	2.975	5.242	5.927	5.358	6.016	6.335	4.534	4.051	4.140	5.828	4.943	4.992	19.502	60.341
2012	2.362	1.983	4.348	6.579	6.273	4.569	3.837	3.158	3.618	4.027	4.807	4.757	15.272	50.318
2013	2.161	2.432	4.005	4.585	5.616	3.136	4.574	3.408	4.935	4.762	5.781	6.891	13.183	52.286
2014	2.169	3.512	4.476	4.905	5.094	5.028	4.233	4.920	5.619	5.743	6.250	7.409	15.062	59.358
2015	3.124	3.984	5.460	6.383	6.078	5.748	4.677	5.044	4.765	7.049	6.898	7.564	18.951	66.774
2016	3.739	4.731	7.067	6.546	6.575	5.543	3.833	5.134	4.945	7.372	7.090	7.603	22.083	70.178
2017	3.974	4.964	6.773	6.780	7.057	5.356	5.003	4.396	6.064	7.734	7.457	7.351	22.491	72.909
2018	4.362	4.179	5.925	5.216	4.584	3.146	3.654	2.587	3.541	3.698	3.578	3.886	19.682	48.356
2019	1.311	1.401	2.143	2.126	2.229	1.538	2.039	1.579	2.284	2.828	3.037	3.782	6.981	26.297
2020	2.425	2.778	3.771	2.606	-	-	-	-	-	-	-	-	11.580	11.580

Kaynak: TÜİK trafik kayıtları.

Rakamlar, son iki model yılına ait traktör tescillerinden oluşmaktadır.

Source: Turkish Statistical Institute – Traffic registrations

Data represents the last two model year's farm tractors registration figures

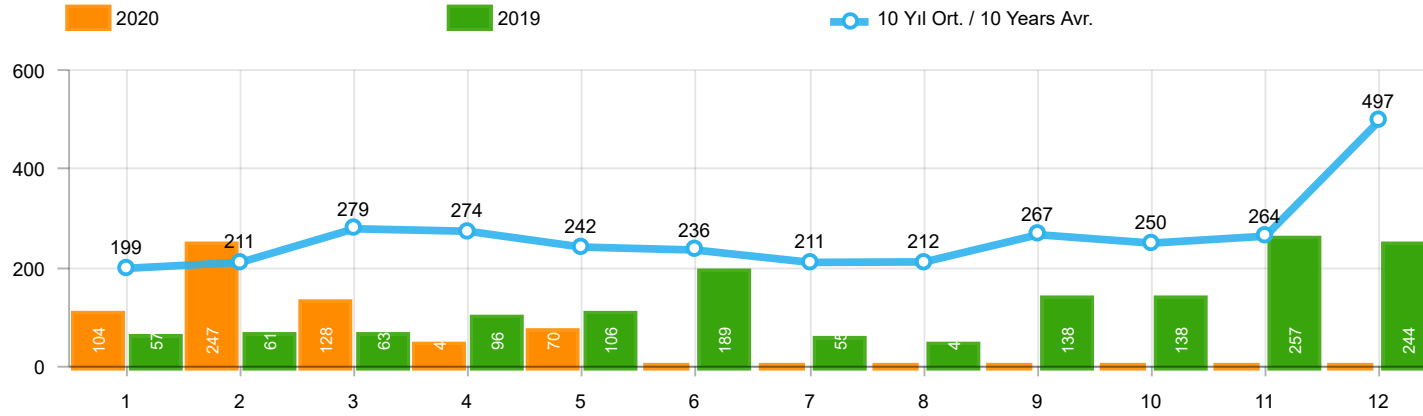


Aylar / Months	10 Yıl Ort / 10 Years Avr.	2020	%
1	1.402	682	-51,4
2	1.955	1.475	-24,6
3	3.148	1.291	-59,0
4	2.692	685	-74,6
5	2.874	913	-68,2
TOPLAM / TOTAL	12.071	5.046	-58,2

Yıl / Year	1	2	3	4	5	6	7	8	9	10	11	12	1-5 Toplam / Total	Toplam / Total	1-5 Yerli / Local	1-5 İthal / Import	İthal Oran / Import %
2010	768	960	1.950	1.949	2.140	2.314	2.403	2.754	2.864	3.001	3.231	6.158	7.767	30.492	5.612	2.155	27,7
2011	2.651	3.544	5.142	4.503	4.563	3.852	2.261	2.745	3.784	3.400	3.149	5.712	20.403	45.306	12.947	7.456	36,5
2012	1.703	2.454	3.866	3.209	3.678	3.540	2.750	2.403	3.296	2.497	3.154	5.300	14.910	37.850	10.484	4.426	29,7
2013	1.484	2.113	3.343	2.925	3.504	3.186	2.777	2.103	2.875	2.086	3.631	5.444	13.369	35.471	9.402	3.967	29,7
2014	1.522	2.065	3.094	3.224	3.727	3.726	2.578	2.783	3.708	2.858	3.384	6.869	13.632	39.538	10.129	3.503	25,7
2015	2.215	3.346	5.699	3.729	3.600	4.253	2.922	2.211	2.687	2.266	3.146	7.307	18.589	43.381	13.165	5.424	29,2
2016	1.167	1.648	2.515	2.319	2.711	2.623	984	1.796	1.438	2.238	2.485	3.127	10.360	25.051	6.751	3.609	34,8
2017	931	1.290	1.982	1.888	2.184	1.891	1.974	1.860	2.284	2.188	2.487	4.438	8.275	25.397	5.870	2.405	29,1
2018	1.237	1.552	2.630	2.328	1.909	1.272	1.235	603	653	488	905	1.695	9.656	16.507	5.699	3.957	41,0
2019	342	579	1.255	842	728	981	435	497	854	1.047	1.100	2.087	3.746	10.747	2.334	1.412	37,7
2020	682	1.475	1.291	685	913								5.046	5.046	3.356	1.690	33,5

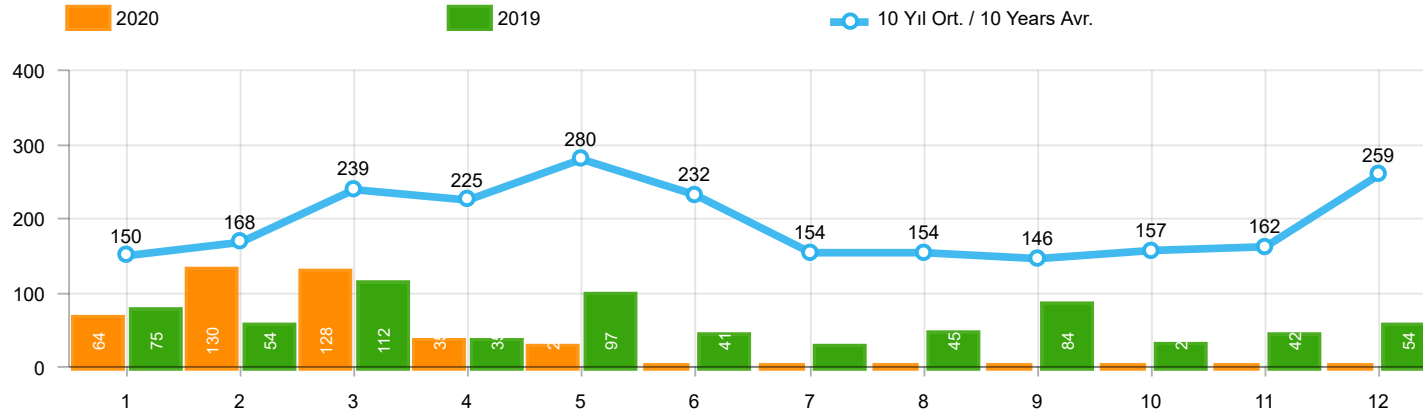
## Midibüs Pazarının Analizi(OCAK - MAYIS)

Midibus Market Analysis(January - May)



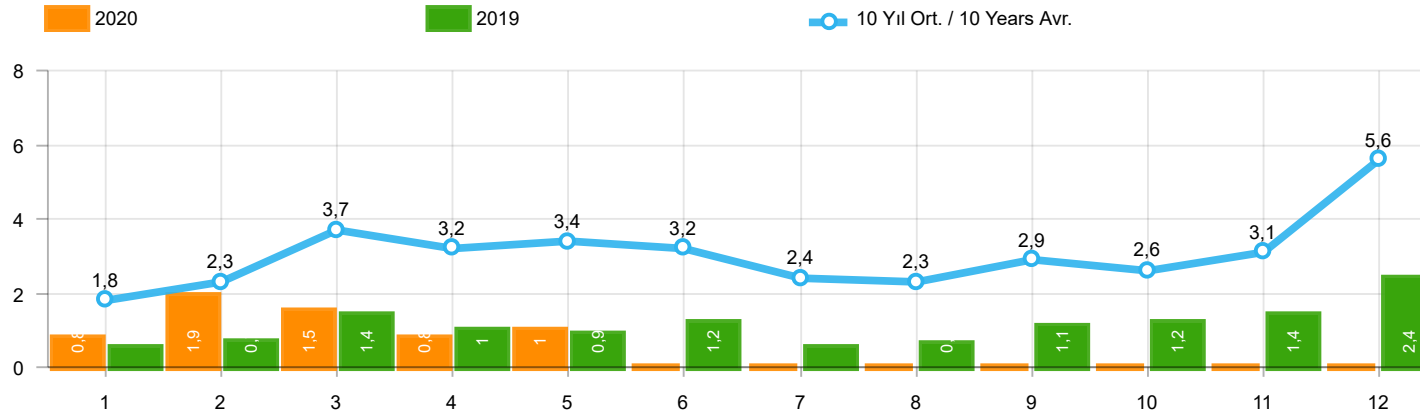
Aylar / Months	10 Yıl Ort / 10 Years Avr.	2020	%
1	199	104	-47,6
2	211	247	17,2
3	279	128	-54,1
4	274	44	-83,9
5	242	70	-71,1
TOPLAM / TOTAL	1.204	593	-50,8

Yıl / Year	1	2	3	4	5	6	7	8	9	10	11	12	1-5 Toplam / Total	Toplam / Total
2010	140	128	172	153	127	124	93	232	199	204	162	382	720	2.116
2011	124	167	267	260	241	233	205	280	270	230	168	525	1.059	2.970
2012	179	257	277	229	257	239	216	249	325	269	189	398	1.199	3.084
2013	191	268	289	276	283	241	367	235	305	392	415	697	1.307	3.959
2014	360	394	384	333	294	258	216	229	395	220	266	653	1.765	4.002
2015	280	322	451	561	372	405	389	253	316	394	325	621	1.986	4.689
2016	309	158	251	302	261	196	139	220	241	230	354	431	1.281	3.092
2017	212	211	227	231	272	156	250	235	318	268	317	594	1.153	3.291
2018	134	142	410	296	207	315	180	146	160	155	184	425	1.189	2.754
2019	57	61	63	96	106	189	55	44	138	138	257	244	383	1.448
2020	104	247	128	44	70								593	593



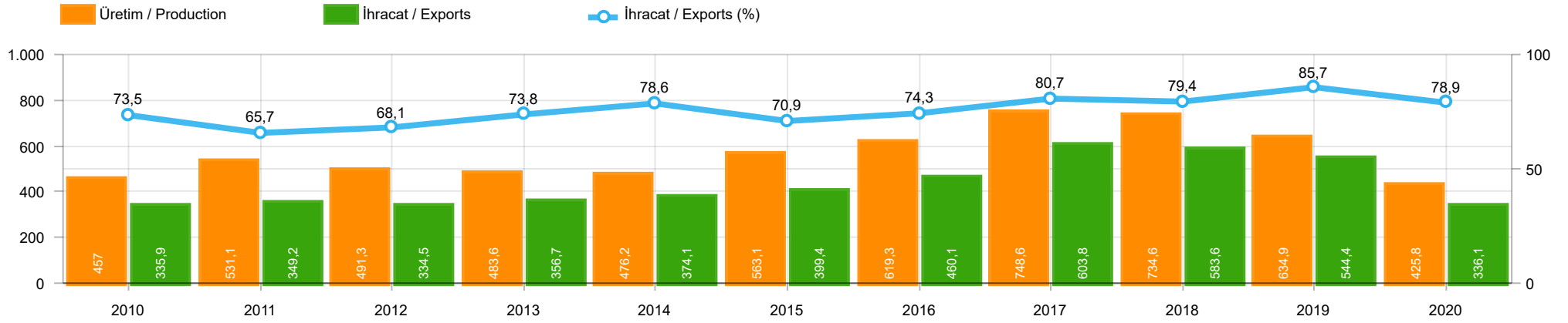
Aylar / Months	10 Yıl Ort / 10 Years Avr.	2020	%
1	150	64	-57,4
2	168	130	-22,6
3	239	128	-46,5
4	225	35	-84,5
5	280	27	-90,4
TOPLAM / TOTAL	1.063	384	-63,9

Yıl / Year	1	2	3	4	5	6	7	8	9	10	11	12	1-5 Toplam / Total	Toplam / Total	1-5 Yerli / Local	1-5 İthal / Import	İthal Oran / Import %
2010	67	71	128	193	193	177	170	211	163	144	133	325	652	1.975	621	31	4,8
2011	92	212	233	324	412	334	148	214	130	176	176	321	1.273	2.772	1.211	62	4,9
2012	125	103	215	172	397	262	174	182	251	229	150	344	1.012	2.604	999	13	1,3
2013	365	445	537	489	580	520	412	281	245	198	123	189	2.416	4.384	2.410	6	0,2
2014	199	179	253	251	305	148	69	92	130	91	97	332	1.187	2.146	1.045	142	12,0
2015	146	222	313	290	290	255	211	203	153	171	359	363	1.261	2.976	1.219	42	3,3
2016	180	209	218	240	214	307	76	82	141	198	314	236	1.061	2.415	1.060	1	0,1
2017	174	119	167	124	188	115	206	187	92	231	109	235	772	1.947	760	12	1,6
2018	78	65	215	136	125	164	45	42	74	107	113	188	619	1.352	608	11	1,8
2019	75	54	112	35	97	41	25	45	84	28	42	54	373	692	373	-	-
2020	64	130	128	35	27								384	384	384	-	-



Aylar / Months	10 Yıl Ort / 10 Years Avr.	2020	%
1	1.751	850	-51,4
2	2.334	1.852	-20,6
3	3.666	1.547	-57,8
4	3.191	764	-76,1
5	3.397	1.010	-70,3
TOPLAM / TOTAL	14.338	6.023	-58,0

Yıl / Year	1	2	3	4	5	6	7	8	9	10	11	12	1-5 Toplam / Total	Toplam / Total	1-5 Yerli / Local	1-5 İthal / Import	İthal Oran / Import %
2010	975	1.159	2.250	2.295	2.460	2.615	2.666	3.197	3.226	3.349	3.526	6.865	9.139	34.583	6.953	2.186	23,9
2011	2.867	3.923	5.642	5.087	5.216	4.419	2.614	3.239	4.184	3.806	3.493	6.558	22.735	51.048	15.217	7.518	33,1
2012	2.007	2.814	4.358	3.610	4.332	4.041	3.140	2.834	3.872	2.995	3.493	6.042	17.121	43.538	12.682	4.439	25,9
2013	2.040	2.826	4.169	3.690	4.367	3.947	3.556	2.619	3.425	2.676	4.169	6.330	17.092	43.814	13.119	3.973	23,2
2014	2.081	2.638	3.731	3.808	4.326	4.132	2.863	3.104	4.233	3.169	3.747	7.854	16.584	45.686	12.939	3.645	22,0
2015	2.641	3.890	6.463	4.580	4.262	4.913	3.522	2.667	3.156	2.831	3.830	8.291	21.836	51.046	16.370	5.466	25,0
2016	1.656	2.015	2.984	2.861	3.186	3.126	1.199	2.098	1.820	2.666	3.153	3.794	12.702	30.558	9.092	3.610	28,4
2017	1.317	1.620	2.376	2.243	2.644	2.162	2.430	2.282	2.694	2.687	2.913	5.267	10.200	30.635	7.783	2.417	23,7
2018	1.449	1.759	3.255	2.760	2.241	1.751	1.460	791	887	750	1.202	2.308	11.464	20.613	7.496	3.968	34,6
2019	474	694	1.430	973	931	1.211	515	586	1.076	1.213	1.399	2.385	4.502	12.887	3.090	1.412	31,4
2020	850	1.852	1.547	764	1.010								6.023	6.023	4.333	1.690	28,1



	2010	2011	2012	2013	2014	2015	2016	2017	2018	2019	2020
<b>İhracat/Export</b>	335.860	349.171	334.473	356.715	374.097	399.385	460.064	603.764	583.610	544.422	336.098
<b>Üretim/Production</b>	457.018	531.111	491.255	483.647	476.226	563.100	619.319	748.575	734.633	634.924	425.804
<b>İhracat/Exports (%)</b>	73,5	65,7	68,1	73,8	78,6	70,9	74,3	80,7	79,4	85,7	78,9

**Taşıt Araçları İhracatı (2018 - 2020)**  
Motor Vehicle Exports (2018 - 2020)

SEKTÖR / SECTOR	2018	2019	1/5-2019	1/5-2020	2020/2019 %
OTOMOBİL / Pass.Car	875.147	828.744	356.200	232.781	-34,6
<b>OTOMOBİL TOPLAM / Pass. Car Total</b>	<b>875.147</b>	<b>828.744</b>	<b>356.200</b>	<b>232.781</b>	<b>-34,6</b>
KAMYON / Truck	14.478	14.824	6.499	3.165	-51,3
KAMYONET / Pick Up	372.954	349.490	148.210	81.215	-45,2
OTOBÜS / Bus	7.708	9.001	3.942	2.373	-39,8
MİNİBÜS / Minibus	47.736	49.283	22.497	11.625	-48,3
MİDİBÜS / Midibus	846	1.244	544	232	-57,4
<b>TİCARİ ARAÇLAR TOPLAM / Commercial Vehicle Total</b>	<b>443.722</b>	<b>423.842</b>	<b>181.692</b>	<b>98.610</b>	<b>-45,7</b>
<b>TAŞIT ARAÇLARI TOPLAM / Motor Vehicles Total</b>	<b>1.318.869</b>	<b>1.252.586</b>	<b>537.892</b>	<b>331.391</b>	<b>-38,4</b>
TRAKTÖR / F.Tractor	15.123	15.844	6.530	4.707	-27,9
<b>TRAKTÖR TOPLAM / F.Tractor Total</b>	<b>15.123</b>	<b>15.844</b>	<b>6.530</b>	<b>4.707</b>	<b>-27,9</b>
<b>GENEL TOPLAM / GRAND TOTAL</b>	<b>1.333.992</b>	<b>1.268.430</b>	<b>544.422</b>	<b>336.098</b>	<b>-38,3</b>

**Üretici Bazında İhracat (adet)**  
Exports by Manufacturer (unit)

Üreticiler / Manufacturers	2018	2019	1-5 / 2019	1-5 / 2020
A.I.O.S.	964	1.433	749	224
FORD OTOSAN	328.502	333.734	142.282	78.800
HATTAT TRAKTÖR	621	637	310	289
HONDA TÜRKİYE	13.699	7.528	3.162	3.807
HYUNDAI ASSAN	190.347	169.803	66.464	53.041
KARSAN	3.419	2.713	719	84
M. BENZ TÜRK	16.309	16.324	7.128	3.532
MAN TÜRKİYE	2.425	2.892	1.323	1.087
OTOKAR	901	1.156	583	232
OYAK RENAULT	280.411	295.275	127.993	84.645
TEMSA	645	602	235	53
TOFAŞ	243.796	194.107	84.885	41.981
TOYOTA	237.451	227.019	102.369	63.905
TÜRK TRAKTÖR	14.502	15.207	6.220	4.418
<b>GENEL TOPLAM / Grand Total</b>	<b>1.333.992</b>	<b>1.268.430</b>	<b>544.422</b>	<b>336.098</b>



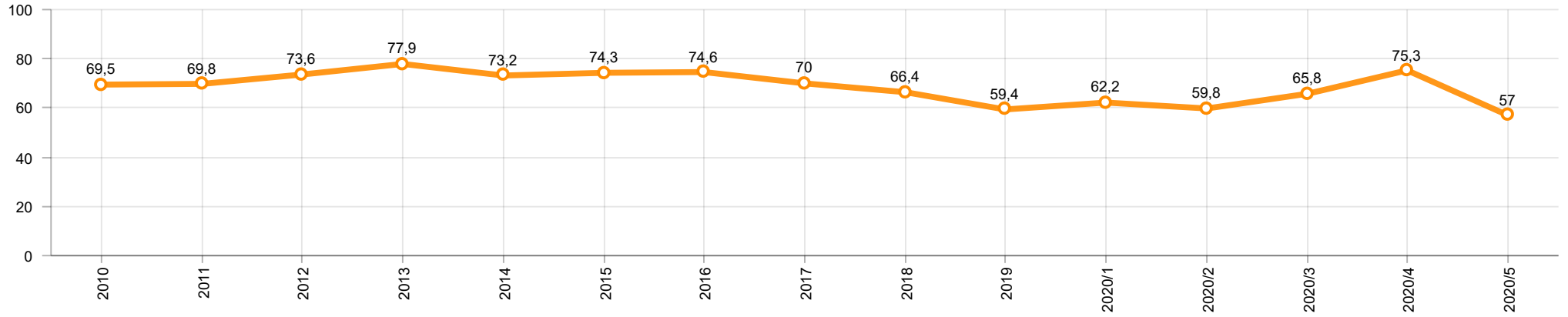
**Otomotiv Ana ve Yan Sanayii İhracatı (ABD \$)**  
CBU and CKD Exports - \$

Sektör / Sector	2018	2019	OCAK - MAYIS / January - May 2019	OCAK - MAYIS / January - May 2020	2020 / 2019 %
<b>Toplam Yan Sanayi / Total Component Industry</b>	<b>10.878.550.618</b>	<b>10.617.878.409</b>	<b>4.685.967.185,85</b>	<b>3.295.928.579,32</b>	<b>-29,7</b>
İç ve Dış Lastik / Tyres	1.353.862.295	1.479.469.475	632.921.966,22	428.788.530,87	-32,3
Emniyet Camı / Safety Glasses	151.148.111	150.706.975	64.796.513,17	50.197.515,99	-22,5
Motor / Engine	581.983.113	518.051.731	242.782.891,22	165.943.473,89	-31,6
Akümülatör / Batteries	387.879.636	397.638.079	160.181.107,24	112.804.076,99	-29,6
Diğer Aksam ve Parça / Spare Parts&Components	8.403.677.463	8.072.012.149	3.585.284.708	2.538.194.981,58	-29,2
<b>Toplam Ana Sanayi / Total Vehicle Industry</b>	<b>21.349.203.156</b>	<b>20.613.852.926</b>	<b>8.683.401.320,65</b>	<b>5.659.534.593,08</b>	<b>-34,8</b>
Otobüs / Bus	1.503.156.428	1.759.421.232	783.649.857,32	424.067.383,17	-45,9
Midibüs-Minibüs / Midibus-Minibus	215.450.022	222.922.952	64.404.250,26	76.806.888,36	19,3
Otomobil / P.Cars	12.420.951.066	11.864.837.779	4.890.959.374,28	3.471.216.650,09	-29,0
Kamyon-Kamyonet / Truck-Pick Up&Van	5.375.329.018	4.945.381.202	2.151.110.682,96	1.212.675.077,3	-43,6
Römork ve Yarı Römork / Trailer-Semi Trailer	507.223.886	503.258.885	240.568.440,95	159.151.135,01	-33,8
Çekici / Tractor	904.738.051	839.891.843	368.285.891,68	171.032.576,76	-53,6
Tarım Traktörü / Farm Tractor	422.354.685	478.139.033	184.422.823,2	144.584.882,39	-21,6
<b>Toplam / Total</b>	<b>32.227.753.774</b>	<b>31.231.731.335</b>	<b>13.369.368.506,5</b>	<b>8.955.463.172,4</b>	<b>-33,0</b>

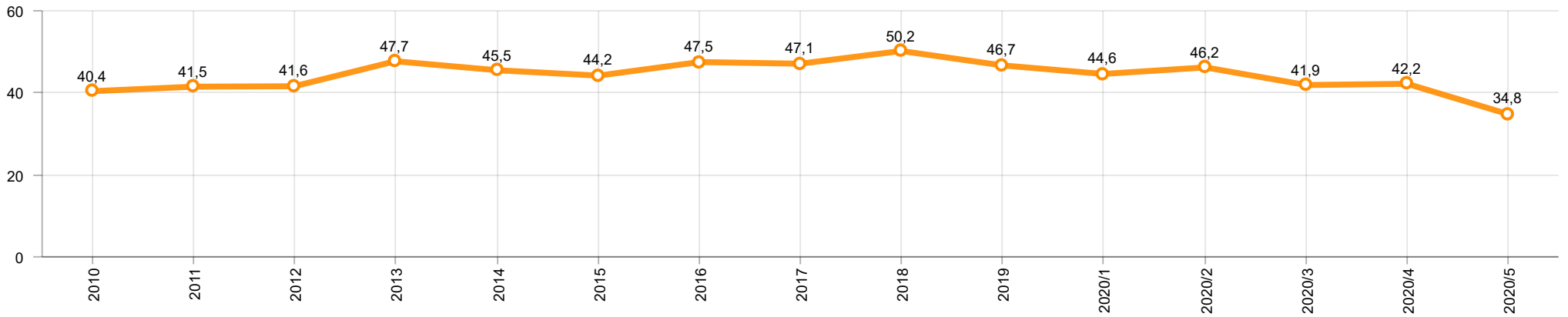
Kaynak: Uludağ İhracatçı Birlikleri . ÜİB tarafından OSD için özel olarak analiz edilen Otomotiv İhracatı kapsamında; ÜİB Türkiye Geneli Otomotiv Endüstrisi sınıflandırmasına kıyasla “Römork ve Yarı Römork” , “Tarım Traktörü” verileri dahil edilmekte; “Kullanılmış Araçlar” ,”İki Tekerlekli Taşıtlar” , “Demiryolu Taşıtları” hariç tutulmaktadır.

Source: Uludağ Exporters Association – Special Analyze for OSD.Compared to Turkish General Automotive Industry classification, this special analyze includes; farms tractors, trailers and semi-trailers, does not include; used vehicles, two-wheeled vehicles and railway vehicles

**Otomobil Pazarında İthalatın Payı (%)**  
**Import Share in P.Car Market (%)**



**Hafif Ticari Araçlar Pazarında İthalatın Payı (%)**  
**Import Share in LCV Market (%)**



Araç Tipleri / Vehicle Types	1	2	3	4	5	6	7	8	9	10	11	12	Toplam / Total
<b>OTOMOBİL - Pass.Car</b>	<b>60.438</b>	<b>73.844</b>	<b>57.326</b>	<b>9.327</b>	<b>31.846</b>								<b>232.781</b>
KAMYON - H. Truck	202	942	1.138	295	588								<b>3.165</b>
K.KAMYON - L. Truck	-	-	-	-	-								-
KAMYONET - Pick Up	25.435	24.356	21.081	882	9.461								<b>81.215</b>
OTOBÜS - Bus	551	696	593	90	443								<b>2.373</b>
MİNİBÜS - Minibus	3.305	2.709	3.553	-	2.058								<b>11.625</b>
MİDİBÜS - Midibus	31	68	82	19	32								<b>232</b>
<b>TİCARİ ARAÇLAR TOPLAMI - CV Total</b>	<b>29.524</b>	<b>28.771</b>	<b>26.447</b>	<b>1.286</b>	<b>12.582</b>								<b>98.610</b>
<b>TAŞIT ARAÇLARI TOPLAMI - MV Total</b>	<b>89.962</b>	<b>102.615</b>	<b>83.773</b>	<b>10.613</b>	<b>44.428</b>								<b>331.391</b>
TRAKTÖR - F.Tractor	1.468	1.181	994	384	680								<b>4.707</b>
<b>GENEL TOPLAM - Grand Total</b>	<b>91.430</b>	<b>103.796</b>	<b>84.767</b>	<b>10.997</b>	<b>45.108</b>								<b>336.098</b>

**Otomobil / P.Car**

Firmalar / Firms	1	2	3	4	5	6	7	8	9	10	11	12	Toplam / Total
FORD OTOSAN	583	867	505	-	405	-	-	-	-	-	-	-	<b>2.360</b>
HONDA TÜRKİYE	1.087	1.566	1.009	28	117	-	-	-	-	-	-	-	<b>3.807</b>
HYUNDAI ASSAN	10.700	14.160	13.138	5.123	9.920	-	-	-	-	-	-	-	<b>53.041</b>
OYAK RENAULT	18.323	24.729	24.536	3.021	14.036	-	-	-	-	-	-	-	<b>84.645</b>
TOFAŞ	7.835	10.136	5.249	1.155	648	-	-	-	-	-	-	-	<b>25.023</b>
TOYOTA	21.910	22.386	12.889	-	6.720	-	-	-	-	-	-	-	<b>63.905</b>
<b>TOPLAM - Total</b>	<b>60.438</b>	<b>73.844</b>	<b>57.326</b>	<b>9.327</b>	<b>31.846</b>	-	-	-	-	-	-	-	<b>232.781</b>

**Kamyonet / Pick-up**

Firmalar / Firms	1	2	3	4	5	6	7	8	9	10	11	12	Toplam / Total
A.I.O.S.	-	-	-	-	-	-	-	-	-	-	-	-	-
FORD OTOSAN	20.932	16.627	17.047	125	9.411	-	-	-	-	-	-	-	<b>64.142</b>
KARSAN	37	-	2	-	8	-	-	-	-	-	-	-	<b>47</b>
OTOKAR	22	-	-	46	-	-	-	-	-	-	-	-	<b>68</b>
TOFAŞ	4.444	7.729	4.032	711	42	-	-	-	-	-	-	-	<b>16.958</b>
<b>TOPLAM - Total</b>	<b>25.435</b>	<b>24.356</b>	<b>21.081</b>	<b>882</b>	<b>9.461</b>	-	-	-	-	-	-	-	<b>81.215</b>

**Minibüs / Minibus**

Firmalar / Firms	1	2	3	4	5	6	7	8	9	10	11	12	Toplam / Total
FORD OTOSAN	3.303	2.708	3.552	-	2.055	-	-	-	-	-	-	-	<b>11.618</b>
KARSAN	2	1	1	-	3	-	-	-	-	-	-	-	<b>7</b>
<b>TOPLAM - Total</b>	<b>3.305</b>	<b>2.709</b>	<b>3.553</b>	<b>-</b>	<b>2.058</b>	-	-	-	-	-	-	-	<b>11.625</b>

**Kamyon / Truck**

Firmalar / Firms	1	2	3	4	5	6	7	8	9	10	11	12	Toplam / Total
A.I.O.S.	-	-	-	-	-	-	-	-	-	-	-	-	-
FORD OTOSAN	145	192	119	92	132	-	-	-	-	-	-	-	680
KARSAN	-	-	-	-	-	-	-	-	-	-	-	-	-
M. BENZ TÜRK	57	750	1.019	203	456	-	-	-	-	-	-	-	2.485
OTOKAR	-	-	-	-	-	-	-	-	-	-	-	-	-
<b>TOPLAM - Total</b>	<b>202</b>	<b>942</b>	<b>1.138</b>	<b>295</b>	<b>588</b>	-	-	-	-	-	-	-	<b>3.165</b>

**Midibüs / Midibus**

Firmalar / Firms	1	2	3	4	5	6	7	8	9	10	11	12	Toplam / Total
A.I.O.S.	16	42	76	15	16	-	-	-	-	-	-	-	165
KARSAN	-	-	-	-	7	-	-	-	-	-	-	-	7
OTOKAR	15	20	5	3	8	-	-	-	-	-	-	-	51
TEMSA	-	6	1	1	1	-	-	-	-	-	-	-	9
<b>TOPLAM - Total</b>	<b>31</b>	<b>68</b>	<b>82</b>	<b>19</b>	<b>32</b>	-	-	-	-	-	-	-	<b>232</b>

**Otobüs / Bus**

Firmalar / Firms	1	2	3	4	5	6	7	8	9	10	11	12	Toplam / Total
A.I.O.S.	6	15	26	-	12	-	-	-	-	-	-	-	59
KARSAN	-	-	23	-	-	-	-	-	-	-	-	-	23
M. BENZ TÜRK	231	380	230	53	153	-	-	-	-	-	-	-	1.047
MAN TÜRKİYE	288	284	269	3	243	-	-	-	-	-	-	-	1.087
OTOKAR	19	15	29	34	16	-	-	-	-	-	-	-	113
TEMSA	7	2	16	-	19	-	-	-	-	-	-	-	44
<b>TOPLAM - Total</b>	<b>551</b>	<b>696</b>	<b>593</b>	<b>90</b>	<b>443</b>	-	-	-	-	-	-	-	<b>2.373</b>

**Traktör / F.Tractor**

Firmalar / Firms	1	2	3	4	5	6	7	8	9	10	11	12	Toplam / Total
HATTAT TRAKTÖR	120	84	22	38	25	-	-	-	-	-	-	-	289
TÜRK TRAKTÖR	1.348	1.097	972	346	655	-	-	-	-	-	-	-	4.418
<b>TOPLAM - Total</b>	<b>1.468</b>	<b>1.181</b>	<b>994</b>	<b>384</b>	<b>680</b>	-	-	-	-	-	-	-	<b>4.707</b>

Firmalar / Firms	2019 Toplam / Total	1	2	3	4	5	6	7	8	9	10	11	12	Toplam / Total
Alfa Romeo	253	2	-	5	-	12	-	-	-	-	-	-	-	19
Aston Martin	18	1	2	1	-	2	-	-	-	-	-	-	-	6
Audi	10.024	461	733	995	613	321	-	-	-	-	-	-	-	3.123
Bentley	9	-	1	-	3	2	-	-	-	-	-	-	-	6
BMW	9.583	251	815	1.168	373	191	-	-	-	-	-	-	-	2.798
Citroen	8.827	584	1.534	1.126	1.413	1.680	-	-	-	-	-	-	-	6.337
Dacia	17.533	2.261	1.851	1.245	601	787	-	-	-	-	-	-	-	6.745
DS	269	10	101	38	34	29	-	-	-	-	-	-	-	212
Ferrari	20	1	3	2	-	2	-	-	-	-	-	-	-	8
Fiat	1.043	7	22	79	21	39	-	-	-	-	-	-	-	168
Ford	12.484	206	862	2.042	1.032	604	-	-	-	-	-	-	-	4.746
Honda	3.108	101	172	160	96	227	-	-	-	-	-	-	-	756
Hyundai	15.460	950	1.385	1.261	574	732	-	-	-	-	-	-	-	4.902
Jaguar	244	-	47	24	6	9	-	-	-	-	-	-	-	86
Jeep	2.123	196	330	504	40	91	-	-	-	-	-	-	-	1.161
Kia	4.987	325	1.140	565	314	565	-	-	-	-	-	-	-	2.909
Lamborghini	9	-	1	2	1	3	-	-	-	-	-	-	-	7
Land Rover	1.371	8	151	206	237	135	-	-	-	-	-	-	-	737
Lexus	85	7	7	7	7	12	-	-	-	-	-	-	-	40
Maserati	45	-	2	-	1	4	-	-	-	-	-	-	-	7
Mazda	417	11	7	10	6	15	-	-	-	-	-	-	-	49
Mercedes-Benz	9.862	504	1.239	1.170	944	862	-	-	-	-	-	-	-	4.719
Mini	1.254	28	82	168	60	26	-	-	-	-	-	-	-	364
Mitsubishi	747	29	21	16	16	52	-	-	-	-	-	-	-	134
Nissan	11.980	757	275	548	188	310	-	-	-	-	-	-	-	2.078
Opel	16.689	554	1.768	2.726	2.044	1.770	-	-	-	-	-	-	-	8.862
Peugeot	23.057	1.338	2.440	2.540	3.792	2.473	-	-	-	-	-	-	-	12.583
Porsche	361	11	36	19	17	14	-	-	-	-	-	-	-	97
Renault	9.410	185	727	968	393	451	-	-	-	-	-	-	-	2.724
Seat	5.914	578	1.199	1.036	532	442	-	-	-	-	-	-	-	3.787
Skoda	15.369	884	1.570	1.303	313	374	-	-	-	-	-	-	-	4.444
Smart	44	12	16	8	3	2	-	-	-	-	-	-	-	41
Ssangyong	111	23	33	1	5	-	-	-	-	-	-	-	-	62
Subaru	662	17	59	84	22	43	-	-	-	-	-	-	-	225
Suzuki	2.381	22	124	173	181	134	-	-	-	-	-	-	-	634
Toyota	1.350	30	90	479	70	117	-	-	-	-	-	-	-	786
Volkswagen	38.820	3.292	3.469	5.164	2.108	1.408	-	-	-	-	-	-	-	15.441
Volvo	4.155	44	256	397	383	357	-	-	-	-	-	-	-	1.437
<b>GENEL TOPLAM - Grand Total</b>	<b>230.078</b>	<b>13.690</b>	<b>22.570</b>	<b>26.240</b>	<b>16.443</b>	<b>14.297</b>	-	-	-	-	-	-	-	<b>93.240</b>

Firmalar / Firms	2019 Toplam / Total	1	2	3	4	5	6	7	8	9	10	11	12	Toplam / Total
<b>Citroen</b>	<b>3.206</b>	250	341	434	133	44	-	-	-	-	-	-	-	<b>1.202</b>
<b>Dacia</b>	<b>2.473</b>	271	352	474	120	272	-	-	-	-	-	-	-	<b>1.489</b>
<b>Fiat</b>	<b>1.767</b>	176	350	252	106	131	-	-	-	-	-	-	-	<b>1.015</b>
<b>Ford</b>	<b>1.198</b>	50	71	63	161	241	-	-	-	-	-	-	-	<b>586</b>
<b>Hyundai</b>	<b>1.114</b>	55	96	54	29	59	-	-	-	-	-	-	-	<b>293</b>
<b>Isuzu</b>	<b>75</b>	2	3	1	1	13	-	-	-	-	-	-	-	<b>20</b>
<b>Iveco</b>	<b>1.326</b>	64	83	104	62	79	-	-	-	-	-	-	-	<b>392</b>
<b>Kia</b>	<b>1.355</b>	5	4	144	45	118	-	-	-	-	-	-	-	<b>316</b>
<b>Mercedes-Benz</b>	<b>5.074</b>	219	480	372	213	263	-	-	-	-	-	-	-	<b>1.547</b>
<b>Mitsubishi</b>	<b>1.880</b>	99	146	160	185	174	-	-	-	-	-	-	-	<b>764</b>
<b>Nissan</b>	<b>1.087</b>	66	92	59	22	47	-	-	-	-	-	-	-	<b>286</b>
<b>Opel</b>	<b>1.370</b>	51	33	298	99	49	-	-	-	-	-	-	-	<b>530</b>
<b>Peugeot</b>	<b>5.804</b>	418	555	495	168	260	-	-	-	-	-	-	-	<b>1.896</b>
<b>Renault</b>	<b>4.309</b>	171	228	117	90	219	-	-	-	-	-	-	-	<b>825</b>
<b>Ssangyong</b>	<b>260</b>	19	21	36	19	18	-	-	-	-	-	-	-	<b>113</b>
<b>Toyota</b>	<b>939</b>	25	34	70	23	96	-	-	-	-	-	-	-	<b>248</b>
<b>Volkswagen</b>	<b>9.676</b>	403	1.456	1.103	479	412	-	-	-	-	-	-	-	<b>3.853</b>
<b>GENEL TOPLAM - Grand Total</b>	<b>42.913</b>	<b>2.344</b>	<b>4.345</b>	<b>4.236</b>	<b>1.955</b>	<b>2.495</b>	-	-	-	-	-	-	-	<b>15.375</b>