



OTOMOTİV SANAYİİ DERNEĐİ
AUTOMOTIVE MANUFACTURERS ASSOCIATION

OTOMOTİV SEKTÖRÜ
AYLIK DEĐERLENDİRME RAPORU
MART 2020

AUTOMOTIVE INDUSTRY MONTHLY REPORT
March 2020

	3 - 2019	3 - 2020	%	1 - 3 / 2019	1 - 3 / 2020	%	4/2018 - 3/2019	4/2019 - 3/2020	%
Otomobil Üretimi/P.Cars Production	87.348	72.093	-17,5	238.822	235.199	-1,5	980.221	979.019	-0,1
Toplam Üretim/Total Production	132.189	103.350	-21,8	361.516	341.136	-5,6	1.486.581	1.440.864	-3,1
Otomobil Pazarı/P.Cars Market	38.628	39.887	3,3	68.812	99.630	44,8	432.823	418.074	-3,4
Toplam Pazar/Total Market	50.651	51.588	1,8	91.067	128.674	41,3	567.724	529.554	-6,7
Otomobil İthalatı/P.Cars Import	22.034	26.240	19,1	40.424	62.500	54,6	282.380	252.154	-10,7
Toplam İthalat/Total Import	27.365	30.901	12,9	50.374	74.574	48,0	347.172	301.269	-13,2
Otomobil İhracatı/P.Cars Export	81.736	57.326	-29,9	209.883	191.608	-8,7	849.591	810.469	-4,6
Toplam İhracat/Total Export	120.239	83.771	-30,3	320.022	276.348	-13,6	1.294.193	1.208.912	-6,6
Otomobil İhracatı(\$)/P.Cars Export (\$)	1.172.283.429	767.648.752	-34,5	2.937.113.849	2.880.683.789	-1,9	12.065.181.617	11.808.385.256	-2,1
Toplam İhracat(\$)/Total Export (\$)*	2.933.340.839	2.106.940.131	-28,2	7.889.451.498	7.137.283.124	-9,5	31.743.681.936	30.478.182.298	-4,0

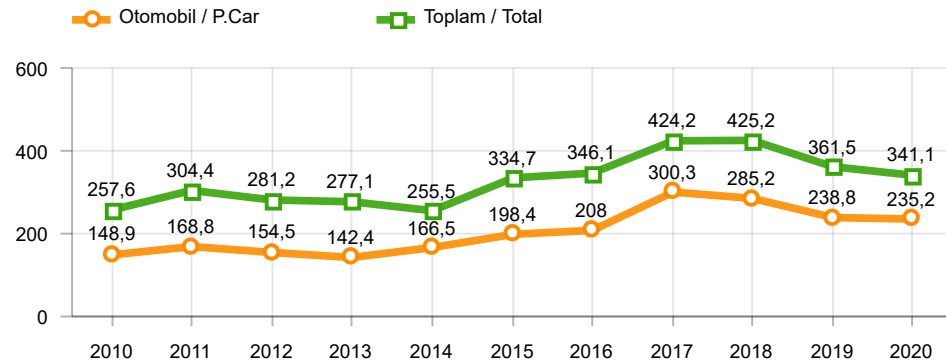
Parametreler/Parameters	3 - 2019	3 - 2020	%	1 - 3 / 2019	1 - 3 / 2020	%	4/2018 - 3/2019	4/2019 - 3/2020	%
ÜFE / PPI	1,6	0,9	-	2,1	3,2	-	31,2	12,6	-
TÜFE / CPI	1,0	0,6	-	2,3	2,3	-	18,7	13,3	-
Sanayi Endeksi / Industry Index	1,6	0,9	-	2,7	3,5	-	30,1	11,6	-
Dolar \$ ** (1 birim)	5,5	6,4	16,6	5,3	6,1	15,2	5,2	5,8	13,2
Euro € ** (1 birim)	6,2	7,0	13,8	6,1	6,8	11,9	6,0	6,5	8,7
Japon Yeni ¥ ** (100 birim)	4,9	5,9	19,8	4,8	5,6	16,8	4,6	5,4	15,6

*Toplam Sanayi / Total Industry Including Components

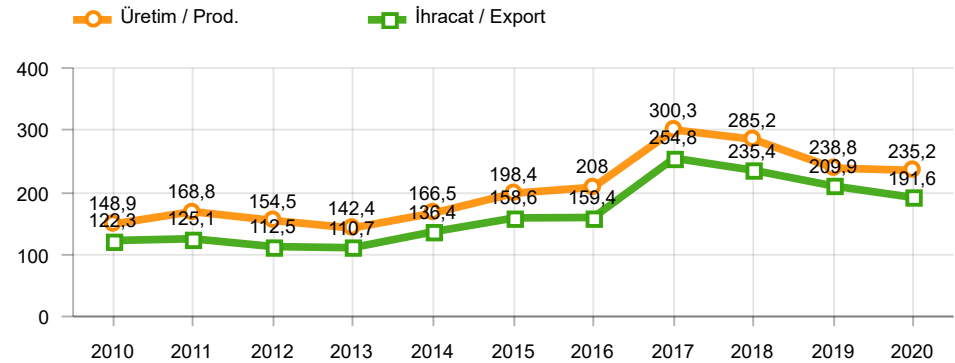
** Ortalama Değerler / Average Values

Araç Tipleri / Types	3 / 2019	3 / 2020	3 % Değişim	1-3 / 2019	1-3 / 2020	1-3 % Değişim
OTOMOBİL / Pass.Car	87.348	72.093	-17,5	238.822	235.199	-1,5
OTOMOBİL Toplam / Pass.Car Total	87.348	72.093	-17,5	238.822	235.199	-1,5
B.KAMYON / H. Truck	1.768	1.955	10,6	4.822	4.155	-13,8
K.KAMYON / L. Truck	59	221	274,6	89	341	283,1
KAMYONET / Pick Up	36.491	24.370	-33,2	99.133	84.822	-14,4
OTOBÜS / Bus	812	776	-4,4	2.238	2.211	-1,2
MİNİBÜS / Minibus	5.505	3.690	-33,0	15.937	13.897	-12,8
MİDİBÜS / Midibus	206	245	18,9	475	511	7,6
TİCARİ ARAÇLAR Toplam / Commercial Vehicles Total	44.841	31.257	-30,3	122.694	105.937	-13,7
TAŞIT ARAÇLARI Toplam / Motor Vehicles Total	132.189	103.350	-21,8	361.516	341.136	-5,6
TRAKTÖR / F.Tractor	2.048	2.188	6,8	4.744	7.453	57,1
TRAKTÖR Toplam / F.Tractor Total	2.048	2.188	6,8	4.744	7.453	57,1
GENEL TOPLAM / Grand Total	134.237	105.538	-21,4	366.260	348.589	-4,8

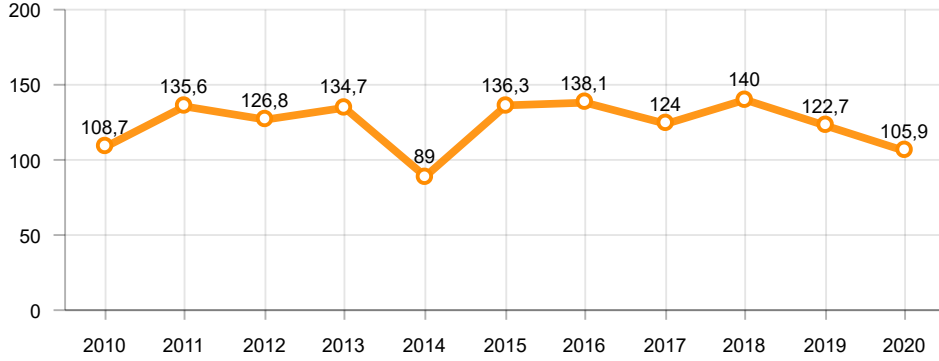
Toplam Üretim ve Otomobil Üretimi (x1000)(OCAK - MART)
Total & P.Cars Production (x1000)(January - March)



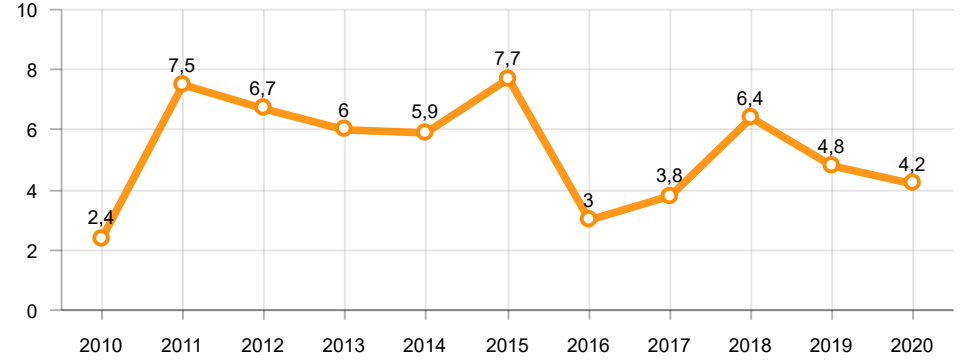
Otomobil Üretimi ve İhracat (x1000)(OCAK - MART)
P.Cars Production & Exports (x1000)(January - March)



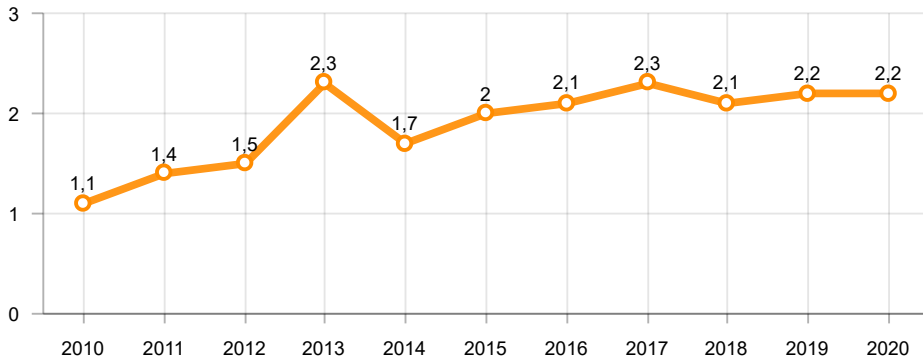
Ticari Araç Üretimi (x1000)(OCAK - MART)
Commercial Vehicle Production (x1000)(January - March)



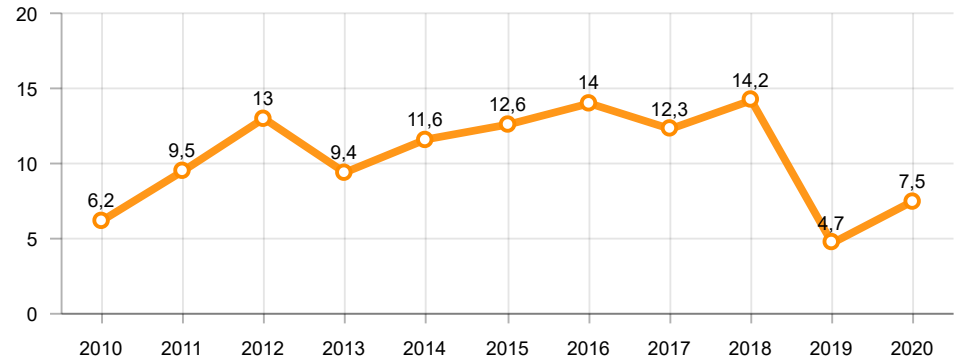
Büyük Kamyon Üretimi (x1000)(OCAK - MART)
Heavy Truck Production (x1000)(January - March)

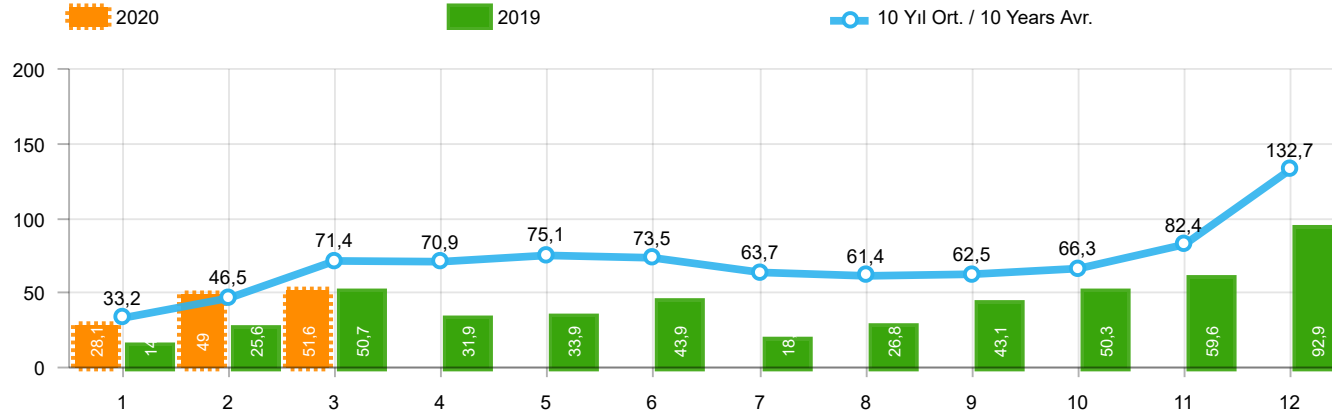


Otobüs Üretimi (x1000)(OCAK - MART)
Bus Production (x1000)(January - March)



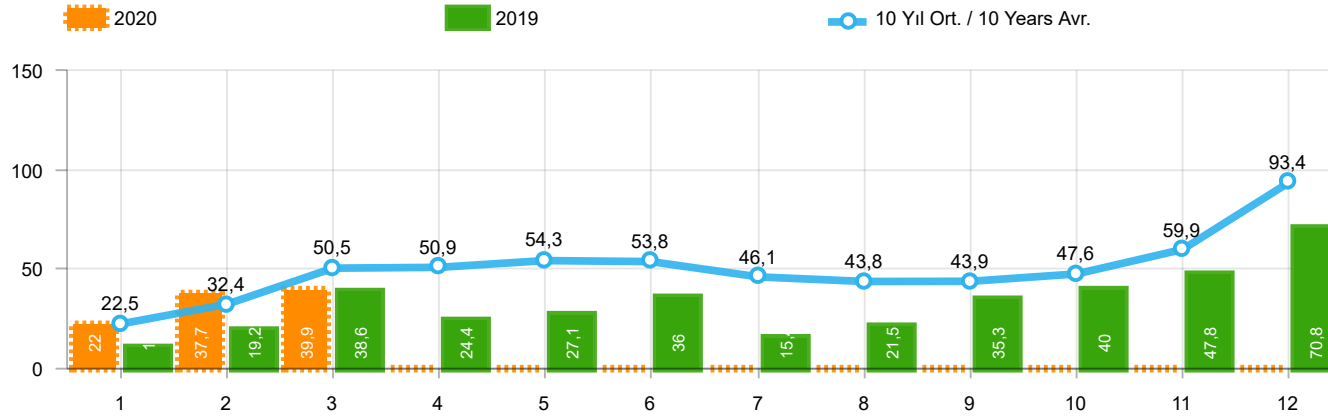
Traktör Üretimi (x1000)(OCAK - MART)
F. Tractor Production (x1000)(January - March)





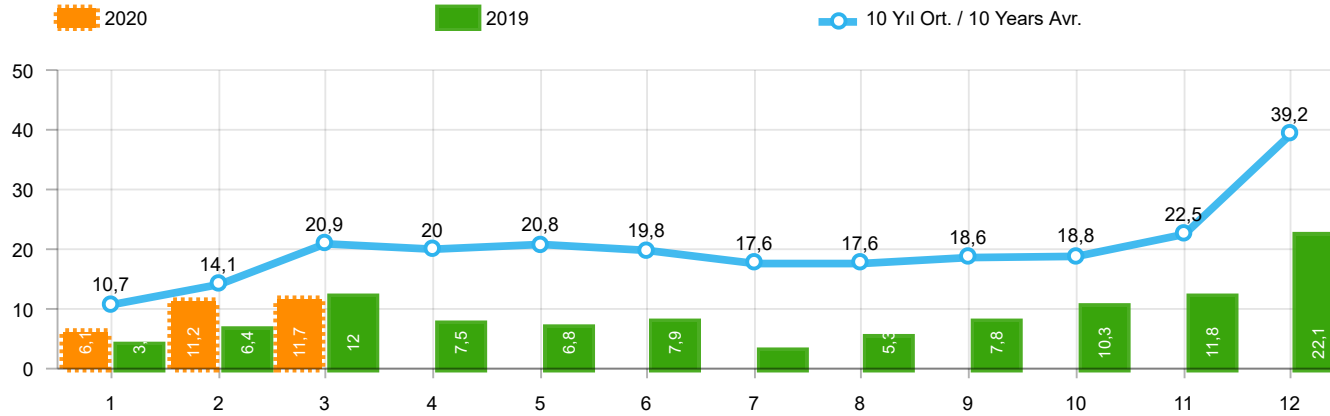
Aylar / Months	10 Yıl Ort. / 10 Years Avr.	2020	%
1	33.233	28.123	-15,4
2	46.483	48.963	5,3
3	71.369	51.588	-27,7
TOPLAM / TOTAL	151.085	128.674	-14,8

Yıl / Year	1	2	3	4	5	6	7	8	9	10	11	12	1-3 Toplam / Total	Toplam / Total	1-3 Yerli / Local	1-3 İthal / Import	İthal Oran / Import %
2010	21.070	32.331	54.019	57.241	61.837	63.511	64.011	64.961	67.040	76.753	77.488	155.234	107.420	795.496	44.501	62.919	58,6
2011	47.759	62.586	84.045	82.782	85.862	85.992	65.658	61.645	64.313	73.227	67.150	134.468	194.390	915.487	77.652	116.738	60,1
2012	31.552	44.138	69.242	66.559	75.195	75.108	65.444	60.982	73.501	62.933	75.203	121.442	144.932	821.299	58.089	86.843	59,9
2013	37.563	51.133	72.943	77.265	85.835	78.043	75.152	67.662	71.388	60.690	83.470	136.048	161.639	897.192	52.500	109.139	67,5
2014	34.751	37.659	51.312	57.113	62.447	64.295	62.770	63.303	70.764	69.742	84.368	154.843	123.722	813.367	40.774	82.948	67,0
2015	37.256	59.221	89.765	96.182	85.804	91.071	87.358	85.244	67.181	67.086	88.431	164.464	186.242	1.019.063	70.708	115.534	62,0
2016	34.369	54.840	85.932	87.748	97.090	94.666	59.732	73.654	69.413	85.666	125.462	145.706	175.141	1.014.278	58.892	116.249	66,4
2017	36.640	48.585	76.178	78.231	88.066	85.820	84.727	74.818	74.046	94.439	103.772	141.507	161.403	986.829	60.091	101.312	62,8
2018	36.525	48.768	79.600	73.886	74.996	52.788	54.194	35.137	23.915	22.321	59.406	80.014	164.893	641.550	64.423	100.470	60,9
2019	14.847	25.569	50.651	31.944	33.947	43.899	18.442	26.832	43.068	50.288	59.575	92.885	91.067	491.947	40.693	50.374	55,3
2020	28.123	48.963	51.588										128.674	128.674	54.100	74.574	58,0



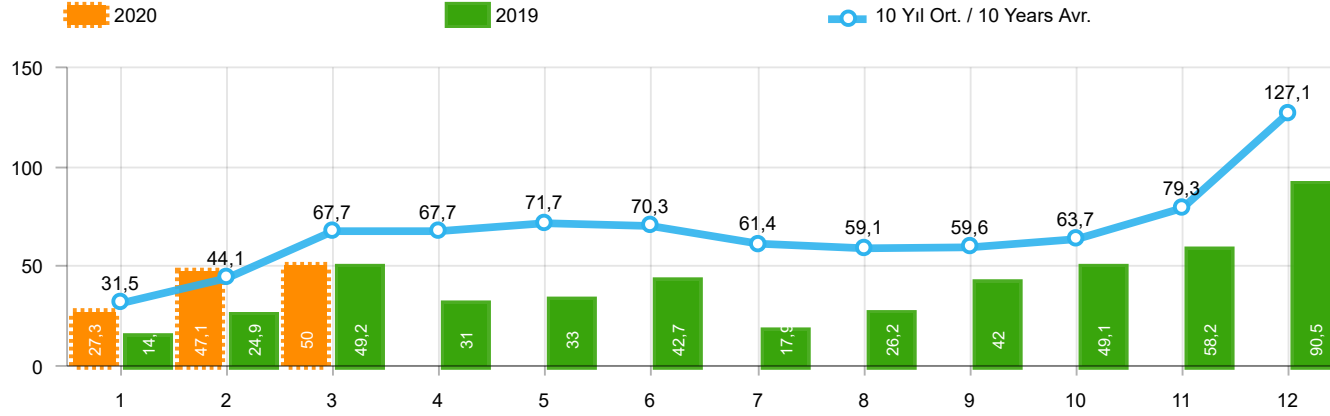
Aylar / Months	10 Yıl Ort. / 10 Years Avr.	2020	%
1	22.488	22.016	-2,1
2	32.399	37.727	16,4
3	50.454	39.887	-20,9
TOPLAM / TOTAL	105.341	99.630	-5,4

Yıl / Year	1	2	3	4	5	6	7	8	9	10	11	12	1-3 Toplam / Total	Toplam / Total	1-3 Yerli / Local	1-3 İthal / Import	İthal Oran / Import %
2010	12.594	20.651	33.958	36.549	40.467	42.086	41.399	42.222	42.477	47.859	50.061	99.461	67.203	509.784	20.614	46.589	69,3
2011	29.868	39.004	54.023	53.835	56.302	56.714	43.518	38.875	39.964	47.508	44.951	88.957	122.895	593.519	37.090	85.805	69,8
2012	21.077	29.189	47.270	45.645	50.460	50.849	44.531	41.236	49.360	43.440	52.297	80.926	97.536	556.280	30.704	66.832	68,5
2013	25.835	36.814	51.785	56.999	62.383	58.290	55.712	51.611	52.925	46.985	64.117	101.199	114.434	664.655	24.846	89.588	78,3
2014	24.368	27.167	37.812	42.769	46.379	47.278	46.602	45.131	49.262	50.814	59.695	110.054	89.347	587.331	21.342	68.005	76,1
2015	24.498	40.817	61.676	70.211	62.878	67.766	64.218	61.753	47.088	47.954	62.397	114.340	126.991	725.596	34.745	92.246	72,6
2016	23.358	40.588	63.975	65.618	73.832	71.111	45.566	53.977	51.340	63.746	95.783	108.044	127.921	756.938	33.436	94.485	73,9
2017	25.689	34.658	55.616	57.998	65.799	66.164	62.384	54.890	53.423	70.488	75.956	99.694	115.963	722.759	35.720	80.243	69,2
2018	26.611	35.901	59.798	55.108	57.227	41.225	42.024	26.976	17.595	16.809	46.204	60.843	122.310	486.321	41.350	80.960	66,2
2019	10.979	19.205	38.628	24.416	27.126	36.024	15.398	21.544	35.308	39.996	47.803	70.829	68.812	387.256	28.388	40.424	58,7
2020	22.016	37.727	39.887										99.630	99.630	37.130	62.500	62,7



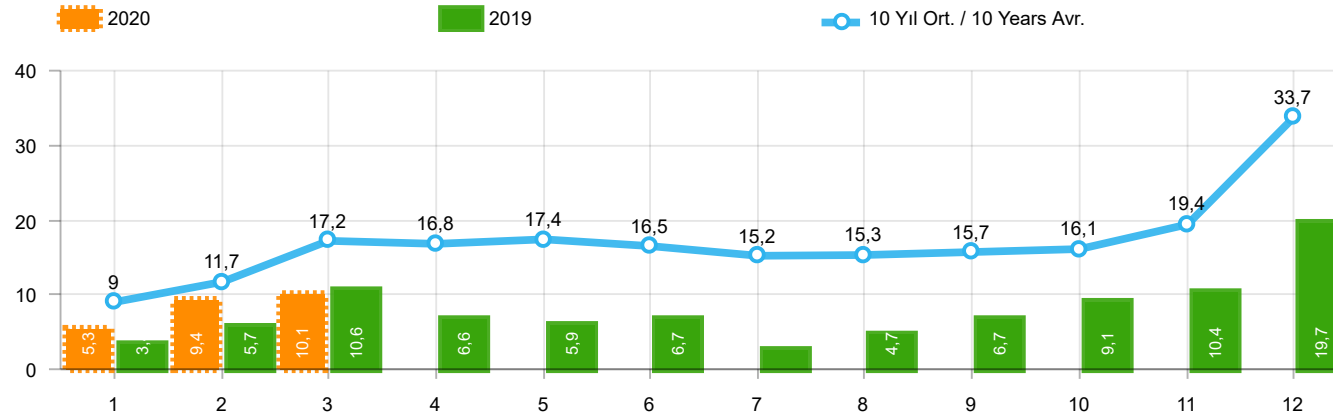
Aylar / Months	10 Yıl Ort / 10 Years Avr.	2020	%
1	10.746	6.107	-43,2
2	14.084	11.236	-20,2
3	20.915	11.701	-44,1
TOPLAM / TOTAL	45.744	29.044	-36,5

Yıl / Year	1	2	3	4	5	6	7	8	9	10	11	12	1-3 Toplam / Total	Toplam / Total	1-3 Yerli / Local	1-3 İthal / Import	İthal Oran / Import %
2010	8.476	11.680	20.061	20.692	21.370	21.425	22.612	22.739	24.563	28.894	27.427	55.773	40.217	285.712	23.887	16.330	40,6
2011	17.891	23.582	30.022	28.947	29.560	29.278	22.140	22.770	24.349	25.719	22.199	45.511	71.495	321.968	40.562	30.933	43,3
2012	10.475	14.949	21.972	20.914	24.735	24.259	20.913	19.746	24.141	19.493	22.906	40.516	47.396	265.019	27.385	20.011	42,2
2013	11.728	14.319	21.158	20.266	23.452	19.753	19.440	16.051	18.463	13.705	19.353	34.849	47.205	232.537	27.654	19.551	41,4
2014	10.383	10.492	13.500	14.344	16.068	17.017	16.168	18.172	21.502	18.928	24.673	44.789	34.375	226.036	19.432	14.943	43,5
2015	12.758	18.404	28.089	25.971	22.926	23.305	23.140	23.491	20.093	19.132	26.034	50.124	59.251	293.467	35.963	23.288	39,3
2016	11.011	14.252	21.957	22.130	23.258	23.555	14.166	19.677	18.073	21.920	29.679	37.662	47.220	257.340	25.456	21.764	46,1
2017	10.951	13.927	20.562	20.233	22.267	19.656	22.343	19.928	20.623	23.951	27.816	41.813	45.440	264.070	24.371	21.069	46,4
2018	9.914	12.867	19.802	18.778	17.769	11.563	12.170	8.161	6.320	5.512	13.202	19.171	42.583	155.229	23.073	19.510	45,8
2019	3.868	6.364	12.023	7.528	6.821	7.875	3.044	5.288	7.760	10.292	11.772	22.056	22.255	104.691	12.305	9.950	44,7
2020	6.107	11.236	11.701										29.044	29.044	16.970	12.074	41,6



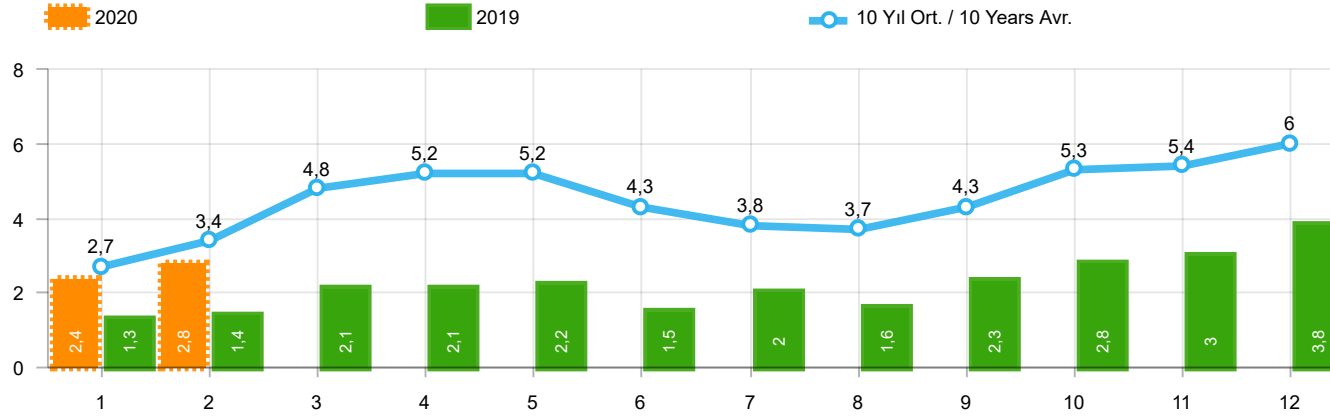
Aylar / Months	10 Yıl Ort. / 10 Years Avr.	2020	%
1	31.483	27.273	-13,4
2	44.149	47.122	6,7
3	67.703	50.008	-26,1
TOPLAM / TOTAL	143.335	124.403	-13,2

Yıl / Year	1	2	3	4	5	6	7	8	9	10	11	12	1-3 Toplam / Total	Toplam / Total	1-3 Yerli / Local	1-3 İthal / Import	İthal Oran / Import %
2010	20.095	31.172	51.769	54.946	59.377	60.896	61.345	61.764	63.814	73.404	73.962	148.369	103.036	760.913	41.107	61.929	60,1
2011	44.892	58.663	78.403	77.695	80.646	81.573	63.044	58.406	60.129	69.421	63.657	127.910	181.958	864.439	69.196	112.762	62,0
2012	29.545	41.324	64.884	62.949	70.863	71.067	62.304	58.148	69.629	59.938	71.710	115.400	135.753	777.761	51.098	84.655	62,4
2013	35.523	48.307	68.774	73.575	81.468	74.096	71.596	65.043	67.963	58.014	79.301	129.718	152.604	853.378	45.477	107.127	70,2
2014	32.670	35.021	47.581	53.305	58.121	60.163	59.907	60.199	66.531	66.573	80.621	146.989	115.272	767.681	34.026	81.246	70,5
2015	34.615	55.331	83.302	91.602	81.542	86.158	83.836	82.577	64.025	64.255	84.601	156.173	173.248	968.017	60.533	112.715	65,1
2016	32.713	52.825	82.948	84.887	93.904	91.540	58.533	71.556	67.593	83.000	122.309	141.912	168.486	983.720	54.494	113.992	67,7
2017	35.323	46.965	73.802	75.988	85.422	83.658	82.297	72.536	71.352	91.752	100.859	136.240	156.090	956.194	56.013	100.077	64,1
2018	35.076	47.009	76.345	71.126	72.755	51.037	52.734	34.346	23.028	21.571	58.204	77.706	158.430	620.937	60.068	98.362	62,1
2019	14.373	24.875	49.221	30.971	33.016	42.688	17.927	26.246	41.992	49.075	58.176	90.500	88.469	479.060	38.979	49.490	55,9
2020	27.273	47.122	50.008										124.403	124.403	50.978	73.425	59,0



Aylar / Months	10 Yıl Ort. / 10 Years Avr.	2020	%
1	8.995	5.257	-41,6
2	11.750	9.395	-20,0
3	17.249	10.121	-41,3
TOPLAM / TOTAL	37.993	24.773	-34,8

Yıl / Year	1	2	3	4	5	6	7	8	9	10	11	12	1-3 Toplam / Total	Toplam / Total	1-3 Yerli / Local	1-3 İthal / Import	İthal Oran / Import %
2010	7.501	10.521	17.811	18.397	18.910	18.810	19.946	19.542	21.337	25.545	23.901	48.908	35.833	251.129	20.493	15.340	42,8
2011	15.024	19.659	24.380	23.860	24.344	24.859	19.526	19.531	20.165	21.913	18.706	38.953	59.063	270.920	32.106	26.957	45,6
2012	8.468	12.135	17.614	17.304	20.403	20.218	17.773	16.912	20.269	16.498	19.413	34.474	38.217	221.481	20.394	17.823	46,6
2013	9.688	11.493	16.989	16.576	19.085	15.806	15.884	13.432	15.038	11.029	15.184	28.519	38.170	188.723	20.631	17.539	45,9
2014	8.302	7.854	9.769	10.536	11.742	12.885	13.305	15.068	17.269	15.759	20.926	36.935	25.925	180.350	12.684	13.241	51,1
2015	10.117	14.514	21.626	21.391	18.664	18.392	19.618	20.824	16.937	16.301	22.204	41.833	46.257	242.421	25.788	20.469	44,3
2016	9.355	12.237	18.973	19.269	20.072	20.429	12.967	17.579	16.253	19.254	26.526	33.868	40.565	226.782	21.058	19.507	48,1
2017	9.634	12.307	18.186	17.990	19.623	17.494	19.913	17.646	17.929	21.264	24.903	36.546	40.127	233.435	20.293	19.834	49,4
2018	8.465	11.108	16.547	16.018	15.528	9.812	10.710	7.370	5.433	4.762	12.000	16.863	36.120	134.616	18.718	17.402	48,2
2019	3.394	5.670	10.593	6.555	5.890	6.664	2.529	4.702	6.684	9.079	10.373	19.671	19.657	91.804	10.591	9.066	46,1
2020	5.257	9.395	10.121										24.773	24.773	13.848	10.925	44,1



Aylar / Months	10 Yıl Ort. / 10 Years Avr.	2020	%
1	2.729	2.425	-11,1
2	3.442	2.778	-19,3
TOPLAM / TOTAL	6.171	5.203	-15,7

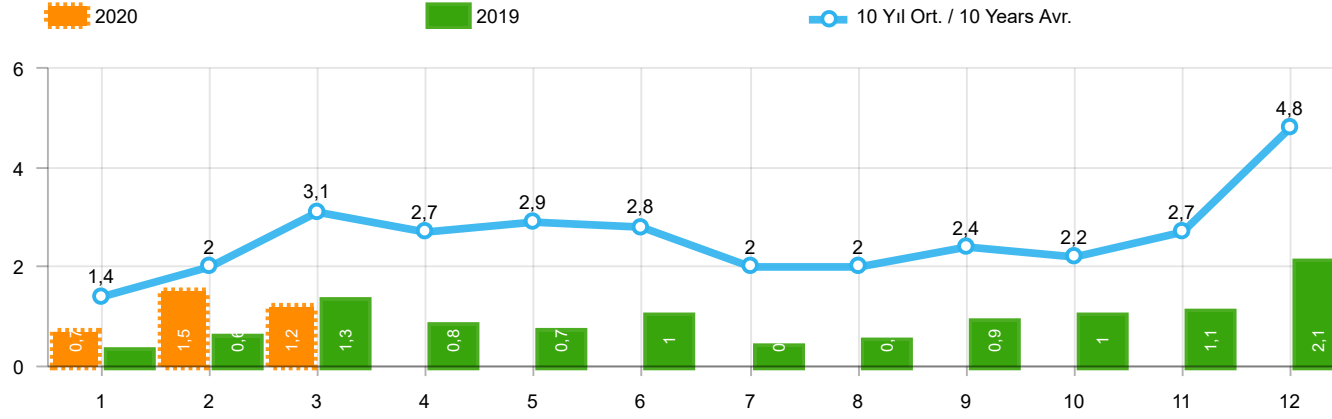
Yıl / Year	1	2	3	4	5	6	7	8	9	10	11	12	1-2 Toplam / Total	Toplam / Total
2010	1.111	1.991	2.330	3.039	2.567	2.638	1.965	3.019	2.806	4.424	3.978	6.168	3.102	36.036
2011	2.975	5.242	5.927	5.358	6.016	6.335	4.534	4.051	4.140	5.828	4.943	4.992	8.217	60.341
2012	2.362	1.983	4.348	6.579	6.273	4.569	3.837	3.158	3.618	4.027	4.807	4.757	4.345	50.318
2013	2.161	2.432	4.005	4.585	5.616	3.136	4.574	3.408	4.935	4.762	5.781	6.891	4.593	52.286
2014	2.169	3.512	4.476	4.905	5.094	5.028	4.233	4.920	5.619	5.743	6.250	7.409	5.681	59.358
2015	3.124	3.984	5.460	6.383	6.078	5.748	4.677	5.044	4.765	7.049	6.898	7.564	7.108	66.774
2016	3.739	4.731	7.067	6.546	6.575	5.543	3.833	5.134	4.945	7.372	7.090	7.603	8.470	70.178
2017	3.974	4.964	6.773	6.780	7.057	5.356	5.003	4.396	6.064	7.734	7.457	7.351	8.938	72.909
2018	4.362	4.179	5.925	5.216	4.584	3.146	3.654	2.587	3.541	3.698	3.578	3.886	8.541	48.356
2019	1.311	1.401	2.143	2.126	2.229	1.538	2.039	1.579	2.284	2.828	3.037	3.782	2.712	26.297
2020	2.425	2.778											5.203	5.203

Kaynak: TÜİK trafik kayıtları.

Rakamlar, son iki model yılına ait traktör tescillerinden oluşmaktadır.

Source: Turkish Statistical Institute – Traffic registrations

Data represents the last two model year's farm tractors registration figures

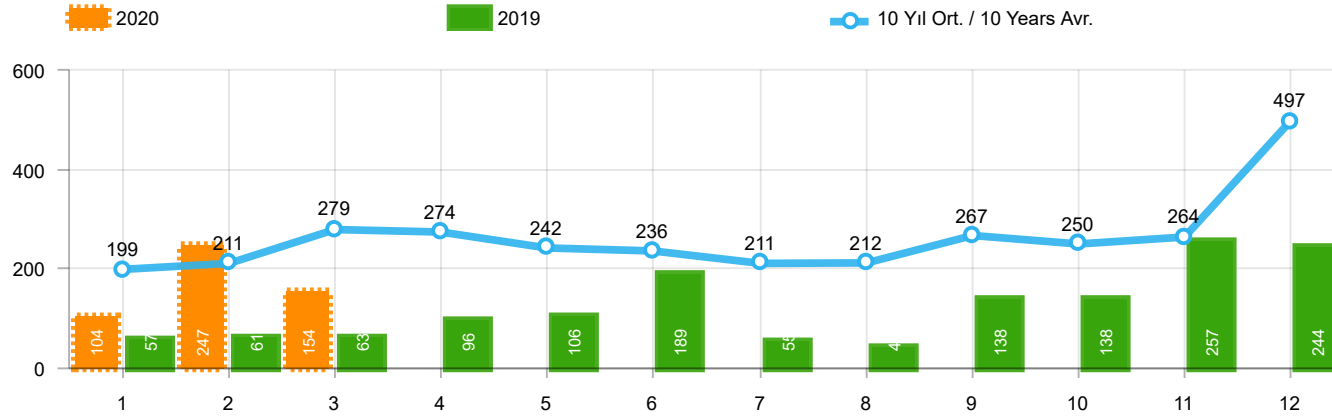


Aylar / Months	10 Yıl Ort. / 10 Years Avr.	2020	%
1	1.402	682	-51,4
2	1.955	1.475	-24,6
3	3.148	1.244	-60,5
TOPLAM / TOTAL	6.505	3.401	-47,7

Yıl / Year	1	2	3	4	5	6	7	8	9	10	11	12	1-3 Toplam / Total	Toplam / Total	1-3 Yerli / Local	1-3 İthal / Import	İthal Oran / Import %
2010	768	960	1.950	1.949	2.140	2.314	2.403	2.754	2.864	3.001	3.231	6.158	3.678	30.492	2.703	975	26,5
2011	2.651	3.544	5.142	4.503	4.563	3.852	2.261	2.745	3.784	3.400	3.149	5.712	11.337	45.306	7.384	3.953	34,9
2012	1.703	2.454	3.866	3.209	3.678	3.540	2.750	2.403	3.296	2.497	3.154	5.300	8.023	37.850	5.841	2.182	27,2
2013	1.484	2.113	3.343	2.925	3.504	3.186	2.777	2.103	2.875	2.086	3.631	5.444	6.940	35.471	4.931	2.009	28,9
2014	1.522	2.065	3.094	3.224	3.727	3.726	2.578	2.783	3.708	2.858	3.384	6.869	6.681	39.538	5.059	1.622	24,3
2015	2.215	3.346	5.699	3.729	3.600	4.253	2.922	2.211	2.687	2.266	3.146	7.307	11.260	43.381	8.466	2.794	24,8
2016	1.167	1.648	2.515	2.319	2.711	2.623	984	1.796	1.438	2.238	2.485	3.127	5.330	25.051	3.073	2.257	42,3
2017	931	1.290	1.982	1.888	2.184	1.891	1.974	1.860	2.284	2.188	2.487	4.438	4.203	25.397	2.978	1.225	29,1
2018	1.237	1.552	2.630	2.328	1.909	1.272	1.235	603	653	488	905	1.695	5.419	16.507	3.312	2.107	38,9
2019	342	579	1.255	842	728	981	435	497	854	1.047	1.100	2.087	2.176	10.747	1.292	884	40,6
2020	682	1.475	1.244										3.401	3.401	2.252	1.149	33,8

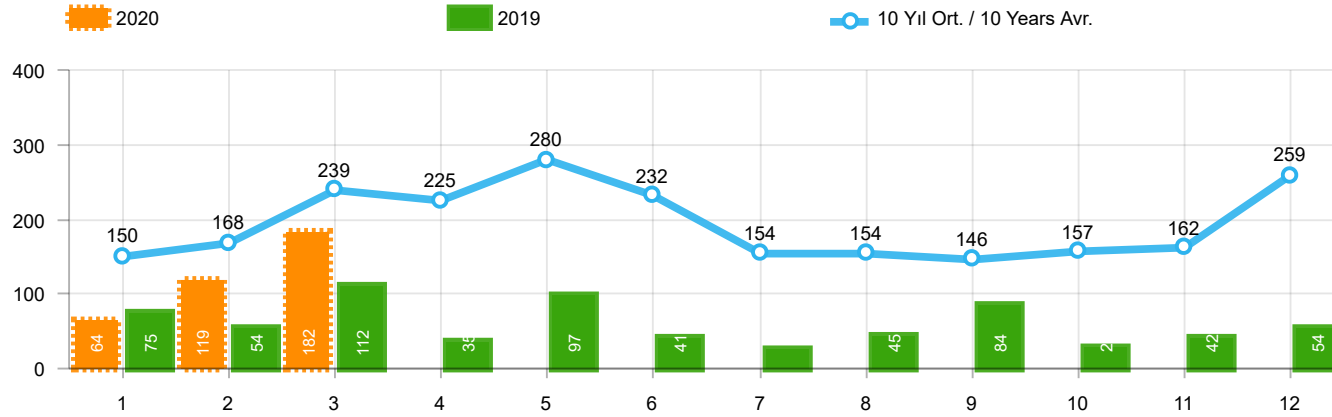
Kaynak: OSD, TAİD, TÜİK

Herhangi bir Dernek üyeliği olmayan markalara ilişkin satış verisi için TÜİK trafik kayıtları esas alınmaktadır. TÜİK trafik kayıtlarının bir ay gecikmeli yayınlanması nedeniyle ilgili markalara ilişkin son ayın satış verisi bir önceki ay ile aynı kabul edilmekte ve bir sonraki ay gerçekleşen veri ile güncellenmektedir.



Aylar / Months	10 Yıl Ort / 10 Years Avr.	2020	%
1	199	104	-47,6
2	211	247	17,2
3	279	154	-44,8
TOPLAM / TOTAL	689	505	-26,7

Yıl / Year	1	2	3	4	5	6	7	8	9	10	11	12	1-3 Toplam / Total	Toplam / Total
2010	140	128	172	153	127	124	93	232	199	204	162	382	440	2.116
2011	124	167	267	260	241	233	205	280	270	230	168	525	558	2.970
2012	179	257	277	229	257	239	216	249	325	269	189	398	713	3.084
2013	191	268	289	276	283	241	367	235	305	392	415	697	748	3.959
2014	360	394	384	333	294	258	216	229	395	220	266	653	1.138	4.002
2015	280	322	451	561	372	405	389	253	316	394	325	621	1.053	4.689
2016	309	158	251	302	261	196	139	220	241	230	354	431	718	3.092
2017	212	211	227	231	272	156	250	235	318	268	317	594	650	3.291
2018	134	142	410	296	207	315	180	146	160	155	184	425	686	2.754
2019	57	61	63	96	106	189	55	44	138	138	257	244	181	1.448
2020	104	247	154										505	505

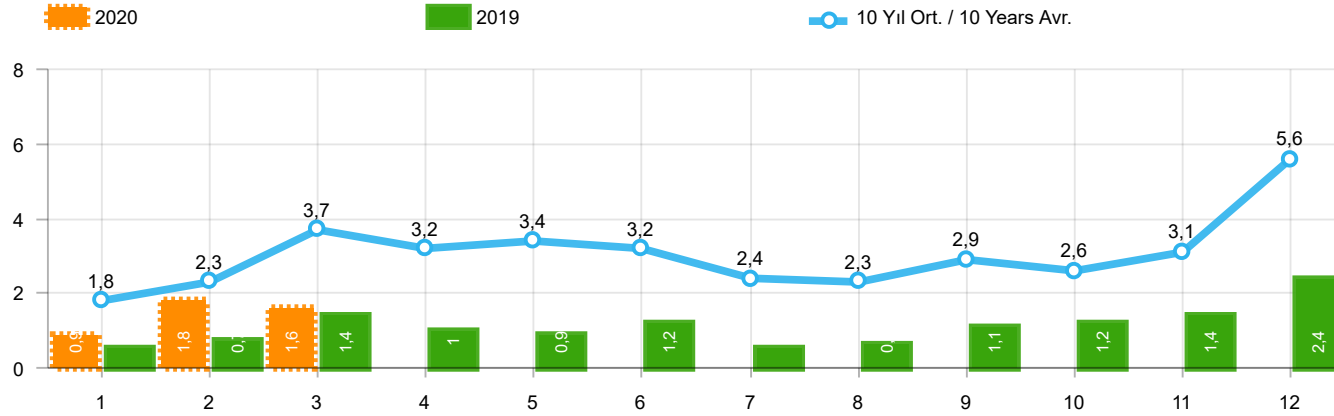


Aylar / Months	10 Yıl Ort / 10 Years Avr.	2020	%
1	150	64	-57,4
2	168	119	-29,1
3	239	182	-23,9
TOPLAM / TOTAL	557	365	-34,5

Yıl / Year	1	2	3	4	5	6	7	8	9	10	11	12	1-3 Toplam / Total	Toplam / Total	1-3 Yerli / Local	1-3 İthal / Import	İthal Oran / Import %
2010	67	71	128	193	193	177	170	211	163	144	133	325	266	1.975	251	15	5,6
2011	92	212	233	324	412	334	148	214	130	176	176	321	537	2.772	514	23	4,3
2012	125	103	215	172	397	262	174	182	251	229	150	344	443	2.604	437	6	1,4
2013	365	445	537	489	580	520	412	281	245	198	123	189	1.347	4.384	1.344	3	0,2
2014	199	179	253	251	305	148	69	92	130	91	97	332	631	2.146	551	80	12,7
2015	146	222	313	290	290	255	211	203	153	171	359	363	681	2.976	656	25	3,7
2016	180	209	218	240	214	307	76	82	141	198	314	236	607	2.415	607	-	-
2017	174	119	167	124	188	115	206	187	92	231	109	235	460	1.947	450	10	2,2
2018	78	65	215	136	125	164	45	42	74	107	113	188	358	1.352	357	1	0,3
2019	75	54	112	35	97	41	25	45	84	28	42	54	241	692	241	-	-
2020	64	119	182										365	365	365	-	-

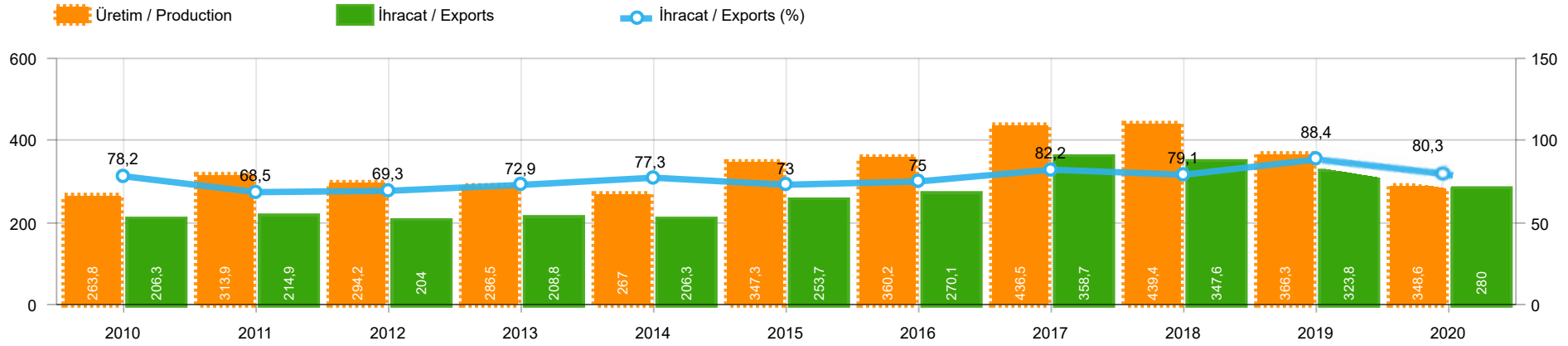
Kaynak: OSD, TÜİK

Herhangi bir Dernek üyesi olmayan markalara ilişkin satış verisi için TÜİK trafik kayıtları esas alınmaktadır. TÜİK trafik kayıtlarının bir ay gecikmeli yayınlanması nedeniyle ilgili markalara ilişkin son ayın satış verisi bir önceki ay ile aynı kabul edilmekte ve bir sonraki ay gerçekleşen veri ile güncellenmektedir.



Aylar / Months	10 Yıl Ort / 10 Years Avr.	2020	%
1	1.751	850	-51,4
2	2.334	1.841	-21,1
3	3.666	1.580	-56,9
TOPLAM / TOTAL	7.750	4.271	-44,9

Yıl / Year	1	2	3	4	5	6	7	8	9	10	11	12	1-3 Toplam / Total	Toplam / Total	1-3 Yerli / Local	1-3 İthal / Import	İthal Oran / Import %
2010	975	1.159	2.250	2.295	2.460	2.615	2.666	3.197	3.226	3.349	3.526	6.865	4.384	34.583	3.394	990	22,6
2011	2.867	3.923	5.642	5.087	5.216	4.419	2.614	3.239	4.184	3.806	3.493	6.558	12.432	51.048	8.456	3.976	32,0
2012	2.007	2.814	4.358	3.610	4.332	4.041	3.140	2.834	3.872	2.995	3.493	6.042	9.179	43.538	6.991	2.188	23,8
2013	2.040	2.826	4.169	3.690	4.367	3.947	3.556	2.619	3.425	2.676	4.169	6.330	9.035	43.814	7.023	2.012	22,3
2014	2.081	2.638	3.731	3.808	4.326	4.132	2.863	3.104	4.233	3.169	3.747	7.854	8.450	45.686	6.748	1.702	20,1
2015	2.641	3.890	6.463	4.580	4.262	4.913	3.522	2.667	3.156	2.831	3.830	8.291	12.994	51.046	10.175	2.819	21,7
2016	1.656	2.015	2.984	2.861	3.186	3.126	1.199	2.098	1.820	2.666	3.153	3.794	6.655	30.558	4.398	2.257	33,9
2017	1.317	1.620	2.376	2.243	2.644	2.162	2.430	2.282	2.694	2.687	2.913	5.267	5.313	30.635	4.078	1.235	23,2
2018	1.449	1.759	3.255	2.760	2.241	1.751	1.460	791	887	750	1.202	2.308	6.463	20.613	4.355	2.108	32,6
2019	474	694	1.430	973	931	1.211	515	586	1.076	1.213	1.399	2.385	2.598	12.887	1.714	884	34,0
2020	850	1.841	1.580										4.271	4.271	3.122	1.149	26,9



	2010	2011	2012	2013	2014	2015	2016	2017	2018	2019	2020
İhracat/Export	206.302	214.919	203.992	208.828	206.346	253.679	270.104	358.682	347.596	323.794	279.991
Üretim/Production	263.775	313.944	294.212	286.502	267.042	347.317	360.151	436.510	439.389	366.260	348.589
İhracat/Exports (%)	78,2	68,5	69,3	72,9	77,3	73	75	82,2	79,1	88,4	80,3

Taşıt Araçları İhracatı (2018 - 2020)
Motor Vehicle Exports (2018 - 2020)

SEKTÖR / SECTOR	2018	2019	1/3-2019	1/3-2020	2020/2019 %
OTOMOBİL / Pass.Car	875.147	828.744	209.883	191.608	-8,7
OTOMOBİL TOPLAM / Pass. Car Total	875.147	828.744	209.883	191.608	-8,7
KAMYON / Truck	14.478	14.824	4.176	2.282	-45,4
KAMYONET / Pick Up	372.954	349.490	88.812	70.870	-20,2
OTOBÜS / Bus	7.708	9.001	2.251	1.840	-18,3
MİNİBÜS / Minibus	47.736	49.283	14.589	9.567	-34,4
MİDİBÜS / Midibus	846	1.244	311	181	-41,8
TİCARİ ARAÇLAR TOPLAM / Commercial Vehicle Total	443.722	423.842	110.139	84.740	-23,1
TAŞIT ARAÇLARI TOPLAM / Motor Vehicles Total	1.318.869	1.252.586	320.022	276.348	-13,6
TRAKTÖR / F.Tractor	15.123	15.844	3.772	3.643	-3,4
TRAKTÖR TOPLAM / F.Tractor Total	15.123	15.844	3.772	3.643	-3,4
GENEL TOPLAM / GRAND TOTAL	1.333.992	1.268.430	323.794	279.991	-13,5

Üretici Bazında İhracat (adet)
Exports by Manufacturer (unit)

Üreticiler / Manufacturers	2018	2019	1-3 / 2019	1-3 / 2020
A.I.O.S.	964	1.433	345	181
FORD OTOSAN	328.502	333.734	88.751	66.580
HATTAT TRAKTÖR	621	637	219	226
HONDA TÜRKİYE	13.699	7.528	2.233	3.662
HYUNDAI ASSAN	190.347	169.803	38.664	37.998
KARSAN	3.419	2.713	441	64
M. BENZ TÜRK	16.309	16.324	4.550	2.667
MAN TÜRKİYE	2.425	2.892	842	841
OTOKAR	901	1.156	343	125
OYAK RENAULT	280.411	295.275	79.716	67.588
TEMSA	645	602	116	32
TOFAŞ	243.796	194.107	44.345	39.425
TOYOTA	237.451	227.019	59.676	57.185
TÜRK TRAKTÖR	14.502	15.207	3.553	3.417
GENEL TOPLAM / Grand Total	1.333.992	1.268.430	323.794	279.991

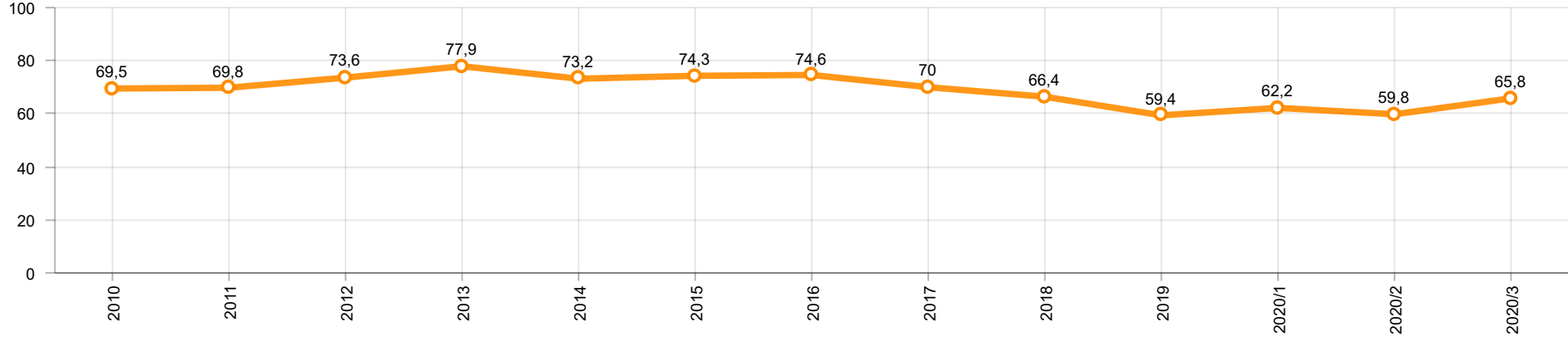
Otomotiv Ana ve Yan Sanayii İhracatı (ABD \$)
CBU and CKD Exports - \$

Sektör / Sector	2018	2019	OCAK - MART / January - March 2019	OCAK - MART / January - March 2020	2020 / 2019 %
Toplam Yan Sanayi / Total Component Industry	10.878.550.618	10.617.878.409	2.717.709.781	2.528.480.508	-7,0
İç ve Dış Lastik / Tyres	1.353.862.295	1.479.469.475	366.840.434	322.066.370	-12,2
Emniyet Camı / Safety Glasses	151.148.111	150.706.975	36.795.664	36.822.917	0,1
Motor / Engine	581.983.113	518.051.731	134.396.348	140.600.721	4,6
Akümülatör / Batteries	387.879.636	397.638.079	92.442.660	71.732.226	-22,4
Diğer Aksam ve Parça / Spare Parts&Components	8.403.677.463	8.072.012.149	2.087.234.675	1.957.258.274	-6,2
Toplam Ana Sanayi / Total Vehicle Industry	21.349.203.156	20.613.852.926	5.171.741.717	4.608.802.616	-10,9
Otobüs / Bus	1.503.156.428	1.759.421.232	444.572.198	316.421.728	-28,8
Midibüs-Minibüs / Midibus-Minibus	215.450.022	222.922.952	39.186.683	58.421.586	49,1
Otomobil / P.Cars	12.420.951.066	11.864.837.779	2.937.113.849	2.880.683.789	-1,9
Kamyon-Kamyonet / Truck-Pick Up&Van	5.375.329.018	4.945.381.202	1.274.577.704	1.022.830.446	-19,8
Römork ve Yarı Römork / Trailer-Semi Trailer	507.223.886	503.258.885	127.551.403	99.767.972	-21,8
Çekici / Tractor	904.738.051	839.891.843	252.644.895	123.812.389	-51,0
Tarım Traktörü / Farm Tractor	422.354.685	478.139.033	96.094.985	106.864.706	11,2
Toplam / Total	32.227.753.774	31.231.731.335	7.889.451.498	7.137.283.124	-9,5

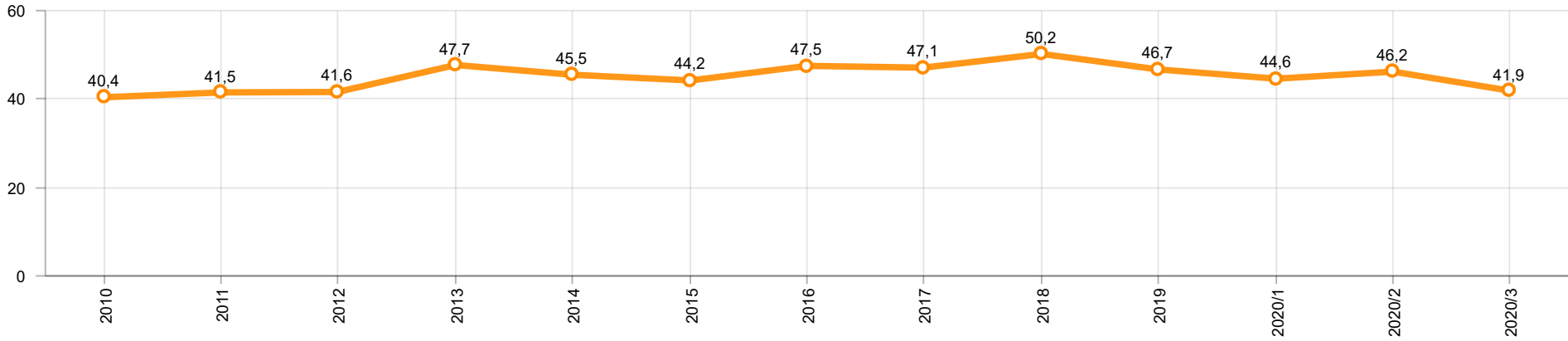
Kaynak: Uludağ İhracatçı Birlikleri . ÜİB tarafından OSD için özel olarak analiz edilen Otomotiv İhracatı kapsamında; ÜİB Türkiye Geneli Otomotiv Endüstrisi sınıflandırmasına kıyasla “Römork ve Yarı Römork” , “Tarım Traktörü” verileri dahil edilmekte; “Kullanılmış Araçlar” ,”İki Tekerlekli Taşıtlar” , “Demiryolu Taşıtları” hariç tutulmaktadır.

Source: Uludağ Exporters Association – Special Analyze for OSD.Compared to Turkish General Automotive Industry classification, this special analyze includes; farms tractors, trailers and semi-trailers, does not include; used vehicles, two-wheeled vehicles and railway vehicles

Otomobil Pazarında İthalatın Payı (%)
Import Share in P.Car Market (%)



Hafif Ticari Araçlar Pazarında İthalatın Payı (%)
Import Share in LCV Market (%)



Araç Tipleri / Vehicle Types	1	2	3	4	5	6	7	8	9	10	11	12	Toplam / Total
OTOMOBİL - Pass.Car	60.438	73.844	57.326										191.608
KAMYON - H. Truck	202	942	1.138										2.282
KAMYONET - Pick Up	25.435	24.356	21.079										70.870
OTOBÜS - Bus	551	696	593										1.840
MİNİBÜS - Minibus	3.305	2.709	3.553										9.567
MİDİBÜS - Midibus	31	68	82										181
TİCARİ ARAÇLAR TOPLAMI - CV Total	29.524	28.771	26.445										84.740
TAŞIT ARAÇLARI TOPLAMI - MV Total	89.962	102.615	83.771										276.348
TRAKTÖR - F.Tractor	1.468	1.181	994										3.643
GENEL TOPLAM - Grand Total	91.430	103.796	84.765										279.991

Otomobil / P.Car

Firmalar / Firms	1	2	3	4	5	6	7	8	9	10	11	12	Toplam / Total
FORD OTOSAN	583	867	505	-	-	-	-	-	-	-	-	-	1.955
HONDA TÜRKİYE	1.087	1.566	1.009	-	-	-	-	-	-	-	-	-	3.662
HYUNDAI ASSAN	10.700	14.160	13.138	-	-	-	-	-	-	-	-	-	37.998
OYAK RENAULT	18.323	24.729	24.536	-	-	-	-	-	-	-	-	-	67.588
TOFAŞ	7.835	10.136	5.249	-	-	-	-	-	-	-	-	-	23.220
TOYOTA	21.910	22.386	12.889	-	-	-	-	-	-	-	-	-	57.185
TOPLAM - Total	60.438	73.844	57.326	-	-	-	-	-	-	-	-	-	191.608

Kamyonet / Pick-up

Firmalar / Firms	1	2	3	4	5	6	7	8	9	10	11	12	Toplam / Total
FORD OTOSAN	20.932	16.627	17.047	-	-	-	-	-	-	-	-	-	54.606
KARSAN	37	-	-	-	-	-	-	-	-	-	-	-	37
OTOKAR	22	-	-	-	-	-	-	-	-	-	-	-	22
TOFAŞ	4.444	7.729	4.032	-	-	-	-	-	-	-	-	-	16.205
TOPLAM - Total	25.435	24.356	21.079	-	-	-	-	-	-	-	-	-	70.870

Minibüs / Minibus

Firmalar / Firms	1	2	3	4	5	6	7	8	9	10	11	12	Toplam / Total
FORD OTOSAN	3.303	2.708	3.552	-	-	-	-	-	-	-	-	-	9.563
KARSAN	2	1	1	-	-	-	-	-	-	-	-	-	4
TOPLAM - Total	3.305	2.709	3.553	-	-	-	-	-	-	-	-	-	9.567

Firmalar / Firms	2019 Toplam / Total	1	2	3	4	5	6	7	8	9	10	11	12	Toplam / Total
Alfa Romeo	253	2	-	5	-	-	-	-	-	-	-	-	-	7
Aston Martin	18	1	2	1	-	-	-	-	-	-	-	-	-	4
Audi	10.024	461	733	995	-	-	-	-	-	-	-	-	-	2.189
Bentley	9	-	1	-	-	-	-	-	-	-	-	-	-	1
BMW	9.583	251	815	1.168	-	-	-	-	-	-	-	-	-	2.234
Citroen	8.827	584	1.534	1.126	-	-	-	-	-	-	-	-	-	3.244
Dacia	17.533	2.261	1.851	1.245	-	-	-	-	-	-	-	-	-	5.357
DS	269	10	101	38	-	-	-	-	-	-	-	-	-	149
Ferrari	20	1	3	2	-	-	-	-	-	-	-	-	-	6
Fiat	1.043	7	22	79	-	-	-	-	-	-	-	-	-	108
Ford	12.484	206	862	2.042	-	-	-	-	-	-	-	-	-	3.110
Honda	3.108	101	172	160	-	-	-	-	-	-	-	-	-	433
Hyundai	15.460	950	1.385	1.261	-	-	-	-	-	-	-	-	-	3.596
Jaguar	244	-	47	24	-	-	-	-	-	-	-	-	-	71
Jeep	2.123	196	330	504	-	-	-	-	-	-	-	-	-	1.030
Kia	4.987	325	1.140	565	-	-	-	-	-	-	-	-	-	2.030
Lamborghini	9	-	1	2	-	-	-	-	-	-	-	-	-	3
Land Rover	1.371	8	151	206	-	-	-	-	-	-	-	-	-	365
Lexus	85	7	7	7	-	-	-	-	-	-	-	-	-	21
Maserati	45	-	2	-	-	-	-	-	-	-	-	-	-	2
Mazda	417	11	7	10	-	-	-	-	-	-	-	-	-	28
Mercedes-Benz	9.862	504	1.239	1.170	-	-	-	-	-	-	-	-	-	2.913
Mini	1.254	28	82	168	-	-	-	-	-	-	-	-	-	278
Mitsubishi	747	29	21	16	-	-	-	-	-	-	-	-	-	66
Nissan	11.980	757	275	548	-	-	-	-	-	-	-	-	-	1.580
Opel	16.689	554	1.768	2.726	-	-	-	-	-	-	-	-	-	5.048
Peugeot	23.057	1.338	2.440	2.540	-	-	-	-	-	-	-	-	-	6.318
Porsche	361	11	36	19	-	-	-	-	-	-	-	-	-	66
Renault	9.410	185	727	968	-	-	-	-	-	-	-	-	-	1.880
Seat	5.914	578	1.199	1.036	-	-	-	-	-	-	-	-	-	2.813
Skoda	15.369	884	1.570	1.303	-	-	-	-	-	-	-	-	-	3.757
Smart	44	12	16	8	-	-	-	-	-	-	-	-	-	36
Ssangyong	111	23	33	1	-	-	-	-	-	-	-	-	-	57
Subaru	662	17	59	84	-	-	-	-	-	-	-	-	-	160
Suzuki	2.381	22	124	173	-	-	-	-	-	-	-	-	-	319
Toyota	1.350	30	90	479	-	-	-	-	-	-	-	-	-	599
Volkswagen	38.820	3.292	3.469	5.164	-	-	-	-	-	-	-	-	-	11.925
Volvo	4.155	44	256	397	-	-	-	-	-	-	-	-	-	697
GENEL TOPLAM - Grand Total	230.078	13.690	22.570	26.240	-	-	-	-	-	-	-	-	-	62.500

Firmalar / Firms	2019 Toplam / Total	1	2	3	4	5	6	7	8	9	10	11	12	Toplam / Total
Citroen	3.206	250	341	434	-	-	-	-	-	-	-	-	-	1.025
Dacia	2.473	271	352	474	-	-	-	-	-	-	-	-	-	1.097
Fiat	1.767	176	350	252	-	-	-	-	-	-	-	-	-	778
Ford	1.198	50	71	63	-	-	-	-	-	-	-	-	-	184
Hyundai	1.114	55	96	54	-	-	-	-	-	-	-	-	-	205
Isuzu	75	2	3	1	-	-	-	-	-	-	-	-	-	6
Iveco	1.326	64	83	104	-	-	-	-	-	-	-	-	-	251
Kia	1.355	5	4	144	-	-	-	-	-	-	-	-	-	153
Mercedes-Benz	5.074	219	480	372	-	-	-	-	-	-	-	-	-	1.071
Mitsubishi	1.880	99	146	160	-	-	-	-	-	-	-	-	-	405
Nissan	1.087	66	92	59	-	-	-	-	-	-	-	-	-	217
Opel	1.370	51	33	298	-	-	-	-	-	-	-	-	-	382
Peugeot	5.804	418	555	495	-	-	-	-	-	-	-	-	-	1.468
Renault	4.309	171	228	117	-	-	-	-	-	-	-	-	-	516
Ssangyong	260	19	21	36	-	-	-	-	-	-	-	-	-	76
Toyota	939	25	34	70	-	-	-	-	-	-	-	-	-	129
Volkswagen	9.676	403	1.456	1.103	-	-	-	-	-	-	-	-	-	2.962
GENEL TOPLAM - Grand Total	42.913	2.344	4.345	4.236	-	-	-	-	-	-	-	-	-	10.925