



OTOMOTİV SANAYİ DERNEĞİ  
AUTOMOTIVE MANUFACTURERS ASSOCIATION

# AYLIK RAPOR

## Automotive Industry Monthly Report

Eylül / September 2016

- **Üretim/Production**
- **Satış/Sales**
- **İthalat/Imports**
- **İhracat/Exports**

OSD "OICA" Üyesidir



OSD is a Member of "OICA"

## 2016 Eylül Ayı Özeti / 2016 September Summary

KONULAR/MATTERS		EYLÜL / SEPTEMBER			9 AY/ 9 MONTHS			SON 12 AYLIK / YoY		
		2015	2016	2016/2015 (%)	2015	2016	2016/2015 (%)	2015	2016	2016/2015 (%)
Üretim/Production	Toplam/Total	116.534	118.341	2	973.831	1.033.225	6	1.308.494	1.418.220	8
	Otomobil/P.Cars	66.572	78.439	18	566.224	641.131	13	768.171	865.934	13
Pazar/Market	Toplam/Total	66.622	69.061	4	693.199	652.832	-6	1.000.336	970.827	-3
	Otomobil/P.Cars	47.088	51.340	9	500.905	489.365	-2	721.468	714.056	-1
İthalat/ Import	Toplam/Total	43.257	48.681	13	456.490	446.055	-2	647.750	648.255	0
	Otomobil/P.Cars	34.145	40.369	18	373.523	370.671	-1	530.936	534.863	1
İhracat/Export	Toplam/Total	90.091	91.629	2	707.016	797.130	13	938.865	1.082.449	15
	Otomobil/P.Cars	51.704	61.757	19	428.674	501.954	17	577.106	677.963	17
İhracat / Export (\$)	Toplam/Total **	1.920.809.852	1.973.375.255	3	15.711.420.029	17.356.321.463	10	20.398.746.811	22.543.437.411	11
	Otomobil/P.Cars	631.267.045	709.946.956	12	5.040.886.728	5.473.161.930	9	6.363.887.141	7.030.201.309	10

PARAMETRELER / PARAMETERS		EYLÜL / SEPTEMBER			9 AY/ 9 MONTHS			SON 12 AYLIK / YoY		
		2015	2016	2016/2015 (%)	2015	2016	2016/2015 (%)	2015	2016	2016/2015 (%)
ÜFE/PPI		1,53	0,29	**	7,81	3,79	**	5,92	4,07	**
TÜFE/CPI		0,89	0,18	**	6,21	4,72	**	7,80	7,92	**
Sanayi Endeksi/Industry Index		1,54	0,31	**	8,43	5,00	**	6,62	5,08	**
\$ (*)		2,9679	2,9760	0	2,6724	2,9195	9	2,5656	2,9165	14
EURO (*)		3,3380	3,3223	0	2,9698	3,2487	9	2,9224	3,2271	10
Japon Yeni (*)		2,4573	2,8941	18	2,1966	2,6687	21	2,1270	2,5977	22

(\*) Ortalama Değerler / Average Values

(\*\*) Toplam Sanayi / Total Industry Including Components

*Raporda yer alan üretim adetleri yalnızca OSD üyelerinin verilerini göstermektedir.  
Production units in this report only show the data of OSD members.*

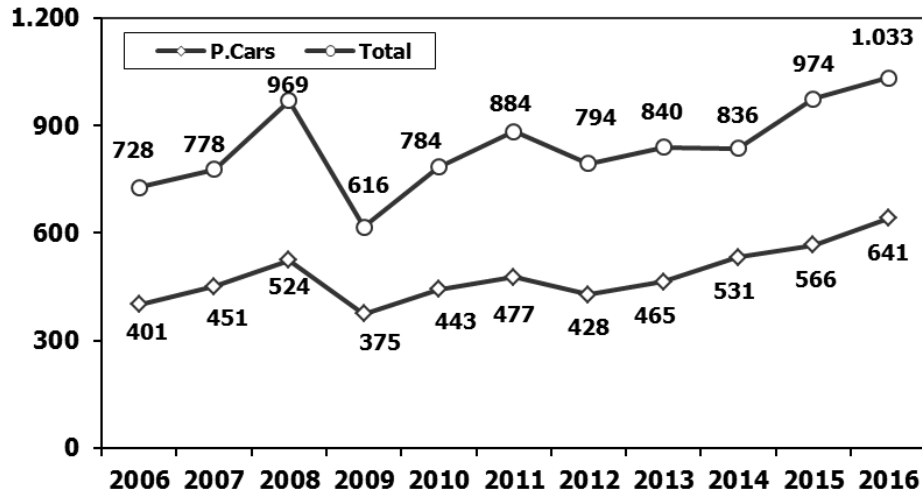
## 2015/2016 Yılları Üretim 2015/2016 Production

K.KAMYON : AYA 3.5-12 Ton (L.Truck:GVW 3.5-12 Ton)

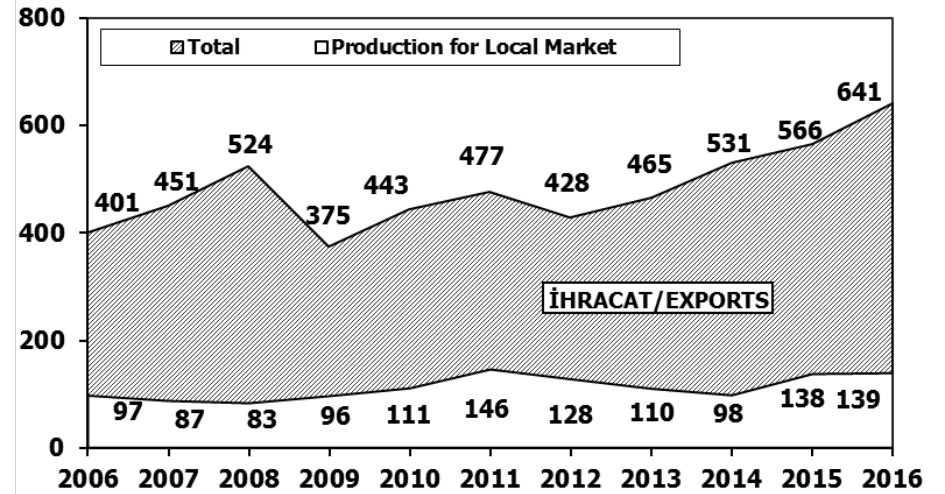
B.KAMYON : AYA 12 Ton'dan Büyük (M.Truck:GVW 12 Ton And Up)

TİPLER	EYLÜL AYI ÜRETİMİ September Production		9 AYLIK ÜRETİM 9 Months Production		DEĞİŞİM % Percent Change %	
	2015	2016	2015	2016	EYLÜL September	9 AY 9 Months
<b>OTOMOBİL - Pass.Car</b>	<b>66.572</b>	<b>78.439</b>	<b>566.224</b>	<b>641.131</b>	<b>18</b>	<b>13</b>
<b>TİCARİ ARAÇLAR - Commercial Vehicles</b>	<b>49.962</b>	<b>39.902</b>	<b>407.607</b>	<b>392.094</b>	<b>-20</b>	<b>-4</b>
* B. KAMYON - M. Truck	2.478	1.541	23.330	11.637	-38	-50
* K. KAMYON - L. Truck	370	170	2.893	1.684	-54	-42
* KAMYONET - Pick Up	44.438	33.318	328.997	339.637	-25	3
* OTOBÜS - Bus	644	620	6.120	6.212	-4	2
* MİNİBÜS - Minibus	1.383	3.991	41.396	30.360	189	-27
* MİDİBÜS - Midibus	649	262	4.871	2.564	-60	-47
<b>TAŞIT ARAÇLARI TOPLAM - MV Total</b>	<b>116.534</b>	<b>118.341</b>	<b>973.831</b>	<b>1.033.225</b>	<b>2</b>	<b>6</b>
TRAKTÖR - F.Tractor	4.589	3.543	38.840	39.144	-23	1
<b>GENEL TOPLAM - Grand Total</b>	<b>121.123</b>	<b>121.884</b>	<b>1.012.671</b>	<b>1.072.369</b>	<b>1</b>	<b>6</b>

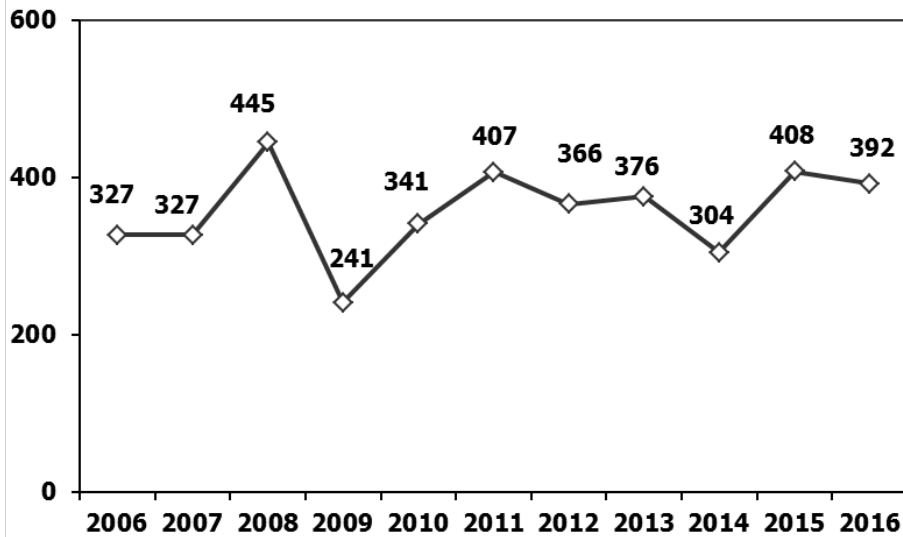
**Toplam Üretim ve Otomobil Üretimi (x1000) (Ocak-Eylül)**  
Total & P.Cars Production (x1000) (January-September)



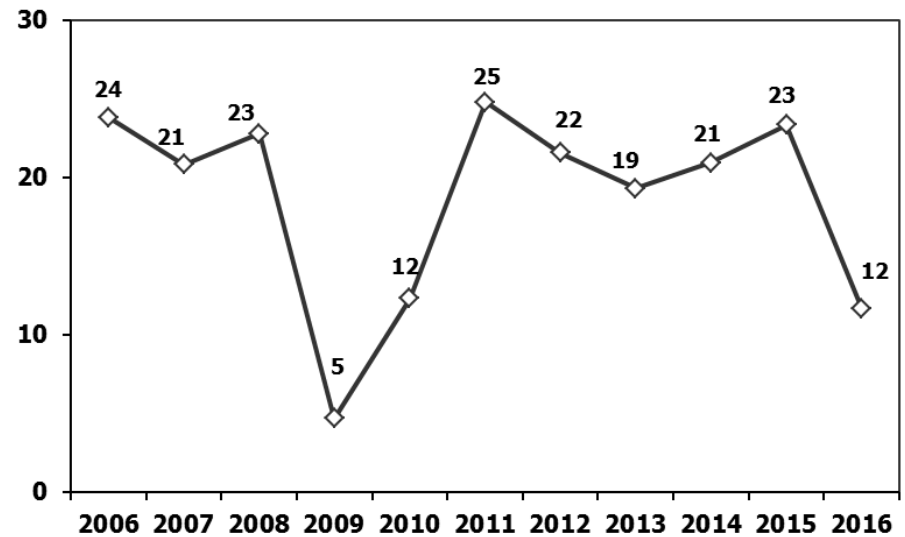
**Otomobil Üretimi ve İhracat (x1000) (Ocak-Eylül)**  
P.Cars Production & Exports (x1000) (January-September)



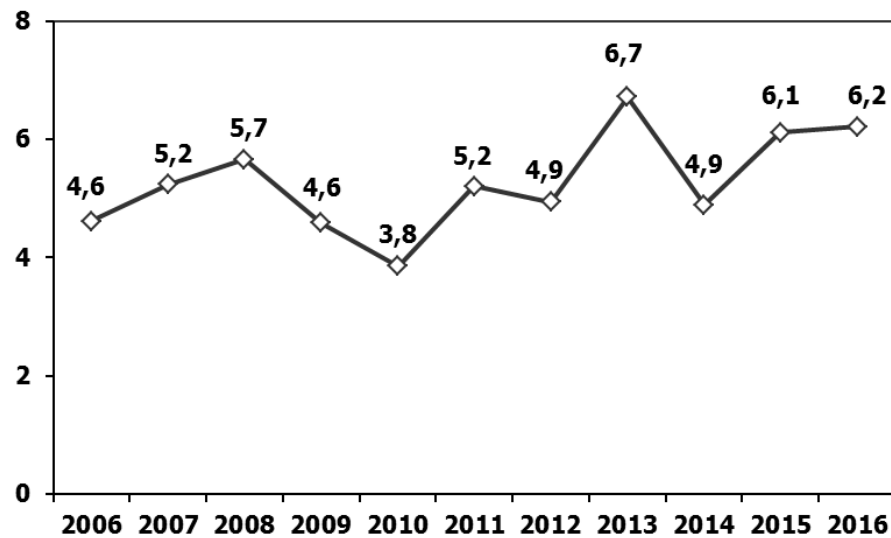
**Ticari Araç Üretimi** (x1000) (Ocak-Eylül)  
Commercial Vehicle Production (x1000) (January-September)



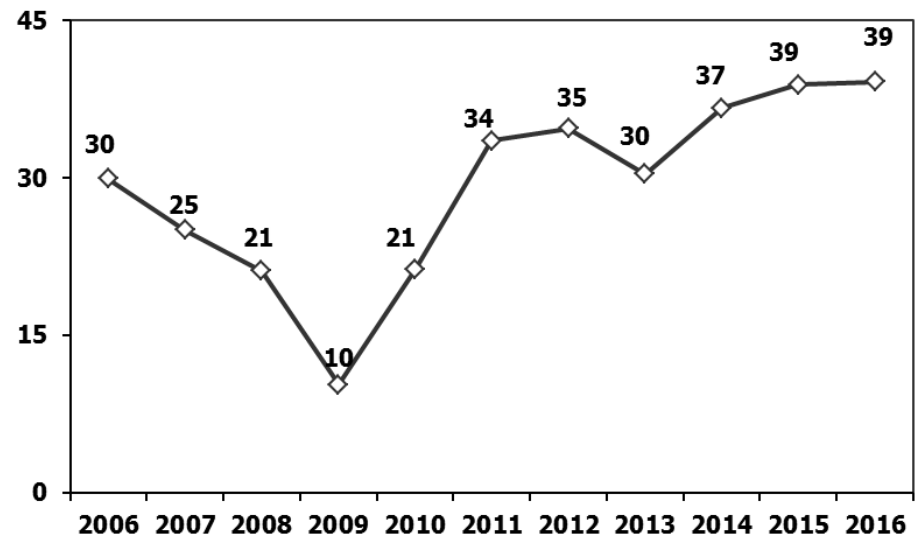
**Büyük Kamyon Üretimi** (x1000) (Ocak-Eylül)  
(GVW >12 Ton) Heavy Truck Production (x1000) (January-September)



**Otobüs Üretimi** (x1000) (Ocak-Eylül)  
Bus Production (x1000) (January-September)



**Traktör Üretimi** (x1000) (Ocak-Eylül)  
F. Tractor Production (x1000) (January-September)

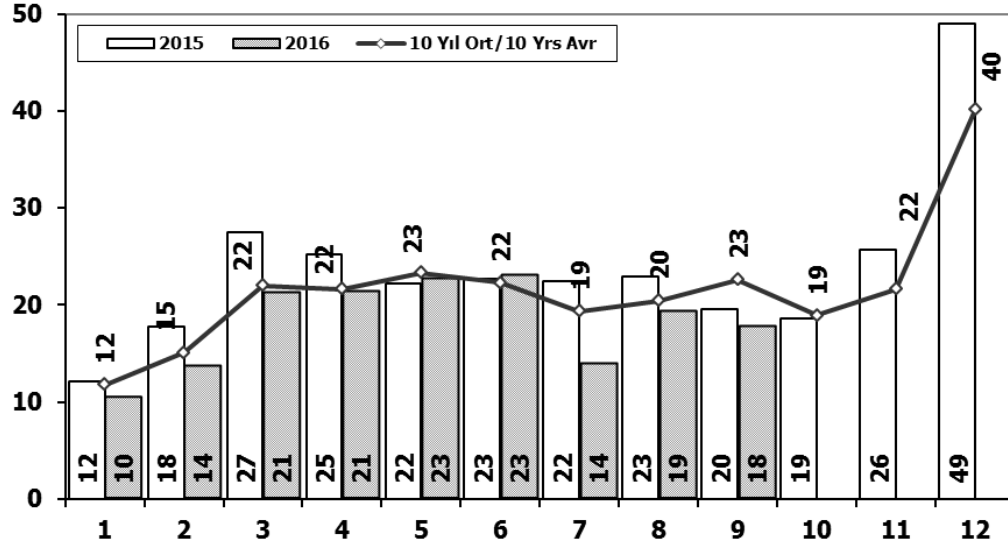






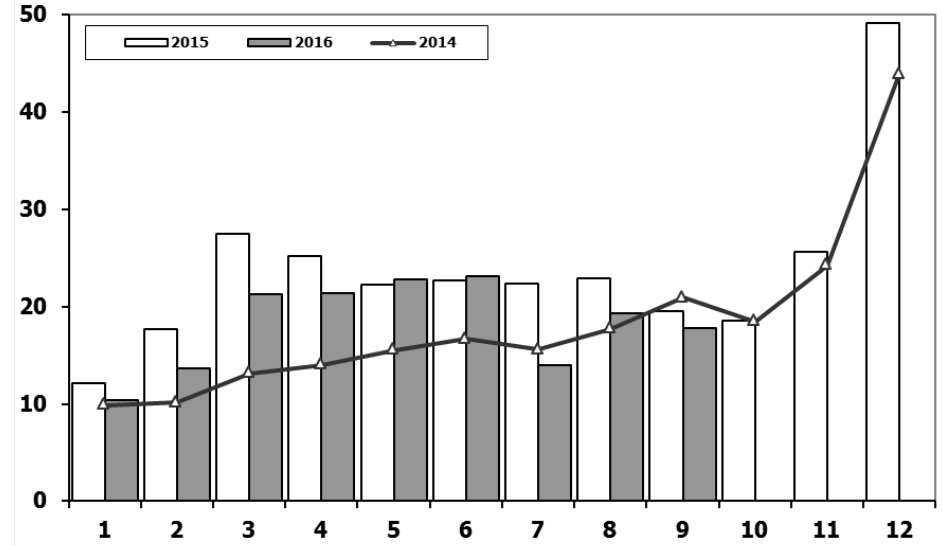
## Ticari Araç Pazarının Analizi (x1000)

### CV Market Analysis (x1000)



## Ticari Araç Pazarı (x1000)

### CV Total Market (x1000)

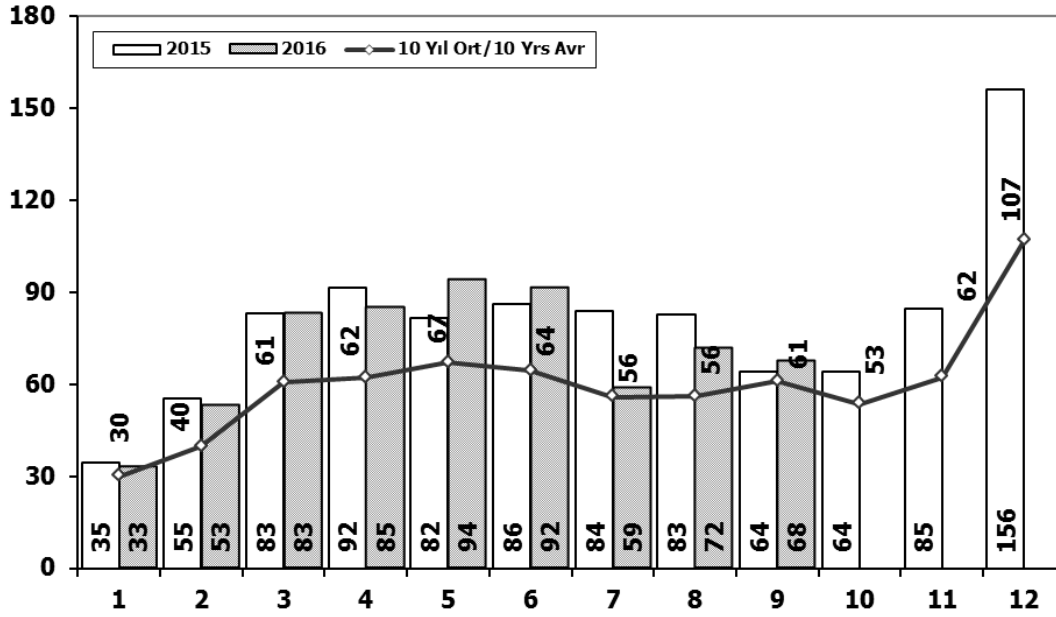


Aylar / Months	10 Yil Ort. 10 Yrs Avr. (x1000)	2016 (x1000)	%
1	11,8	10,4	-11,7
2	15,1	13,6	-9,8
3	22,0	21,2	-3,5
4	21,6	21,4	-1,0
5	23,3	22,7	-2,4
6	22,3	23,1	3,7
7	19,4	13,9	-28,1
8	20,4	19,3	-5,5
9	22,6	17,7	-21,5
<b>Total</b>	<b>178,5</b>	<b>163,5</b>	<b>-8,4</b>

	1	2	3	4	5	6	7	8	9	10	11	12	9 Ay/Mo	Total
<b>2006</b>	13.463	19.717	28.094	28.676	34.768	25.221	17.384	22.501	22.112	18.568	25.421	36.371	211.936	292.296
<b>2007</b>	11.764	14.490	21.152	20.429	22.188	21.535	21.871	25.702	22.416	23.489	27.374	44.331	181.547	276.741
<b>2008</b>	15.204	16.925	22.667	20.654	20.150	20.669	19.162	20.490	19.776	15.359	10.951	18.539	175.697	220.546
<b>2009</b>	7.458	8.354	15.909	18.224	20.699	22.083	13.609	14.555	31.241	8.289	11.421	34.208	152.132	206.050
<b>2010</b>	8.456	11.662	19.870	20.530	21.161	21.304	22.319	22.423	24.124	28.921	27.345	55.273	171.849	283.388
<b>2011</b>	17.790	23.344	29.310	28.236	28.791	29.149	21.846	22.503	23.679	25.132	22.244	45.324	224.648	317.348
<b>2012</b>	10.142	14.638	21.687	20.369	24.360	23.932	20.591	19.612	23.837	19.237	22.748	40.187	179.168	261.340
<b>2013</b>	11.305	14.117	20.903	20.016	23.038	19.481	19.014	15.772	18.112	13.414	18.900	34.397	161.758	228.469
<b>2014</b>	9.857	10.141	13.152	13.997	15.530	16.674	15.604	17.708	20.918	18.445	24.242	43.887	133.581	220.155
<b>2015</b>	12.078	17.716	27.445	25.220	22.267	22.697	22.407	22.930	19.534	18.566	25.646	49.092	192.294	285.598
<b>2016</b>	10.382	13.635	21.239	21.423	22.744	23.092	13.939	19.292	17.721				163.467	163.467

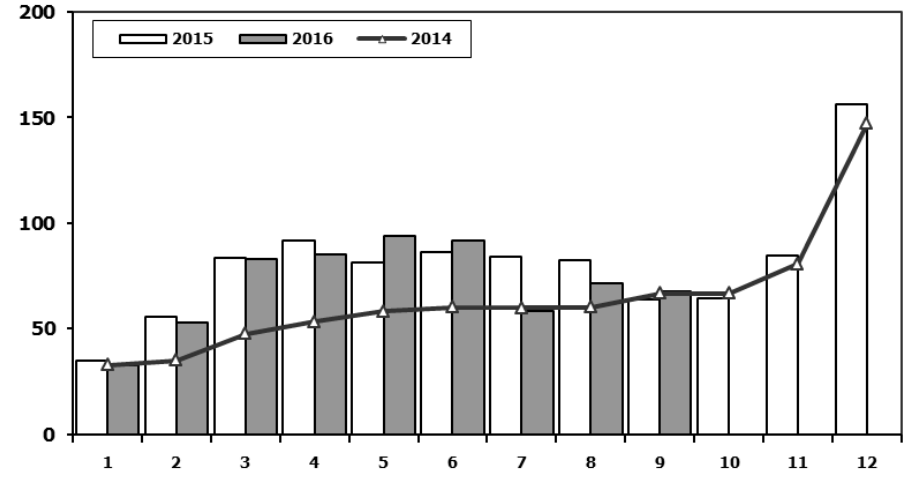
## Hafif Araç Pazarının Analizi (x1000)

### LV Market Analysis (x1000)



## Hafif Araç Pazarı (x1000)

### LV Total Market (x1000)



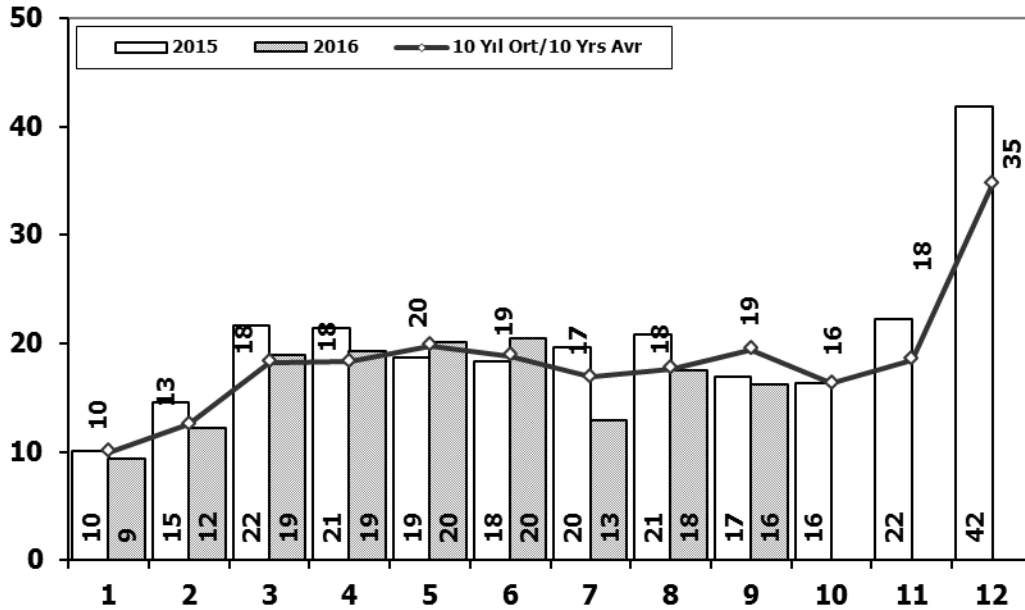
Ay / Months	10 Yil Ort. / 10 Yrs Avr. (x1000)	2016 (x1000)	%
1	30,0	32,7	9,2
2	39,7	52,8	33,1
3	60,5	82,9	37,0
4	62,1	84,9	36,7
5	67,0	93,9	40,2
6	64,4	91,5	42,1
7	55,8	58,5	4,9
8	56,0	71,6	27,8
9	61,0	67,6	10,8
Total	496,5	636,5	28,2

	1	2	3	4	5	6	7	8	9	10	11	12	9 Ay/Mo	Total
2006	27.917	40.938	60.052	64.038	78.229	54.355	37.251	43.767	46.109	36.542	51.867	76.787	452.656	617.852
2007	23.117	29.184	41.890	42.366	47.938	48.674	47.490	50.558	46.581	52.725	63.313	100.926	377.798	594.762
2008	31.527	35.251	53.649	47.701	48.598	46.324	42.156	43.670	43.932	32.884	26.253	42.078	392.808	494.023
2009	19.606	21.742	55.111	52.640	63.191	61.067	28.845	35.609	81.397	21.033	27.962	88.923	419.208	557.126
2010	20.095	31.172	51.769	54.946	59.377	60.896	61.345	61.764	63.814	73.404	73.962	148.369	465.178	760.913
2011	44.892	58.663	78.403	77.695	80.646	81.573	63.044	58.406	60.129	69.421	63.657	127.910	603.451	864.439
2012	29.545	41.324	64.884	62.949	70.863	71.067	62.304	58.148	69.629	59.938	71.710	115.400	530.713	777.761
2013	35.523	48.307	68.774	73.575	81.468	74.096	71.596	65.043	67.963	58.014	79.301	129.718	586.345	853.378
2014	32.670	35.021	47.581	53.305	58.121	60.163	59.907	60.199	66.531	66.573	80.621	146.989	473.498	767.681
2015	34.615	55.331	83.302	91.602	81.542	86.158	83.836	82.577	64.025	64.255	84.601	156.173	662.988	968.017
2016	32.713	52.825	82.948	84.887	93.904	91.540	58.533	71.556	67.593				636.499	636.499



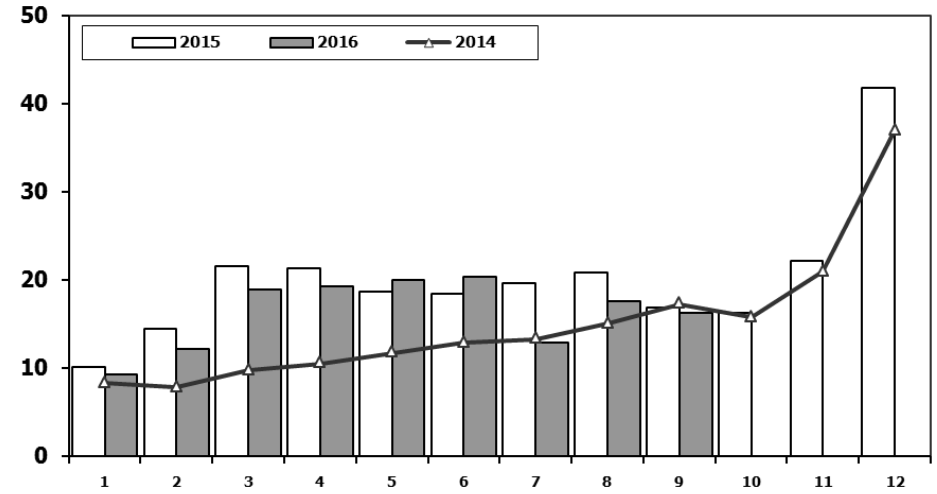
## Hafif Ticari Araç Pazarının Analizi (x1000)

LCV Market Analysis (x1000)



## Hafif Ticari Araç Pazarı (x1000)

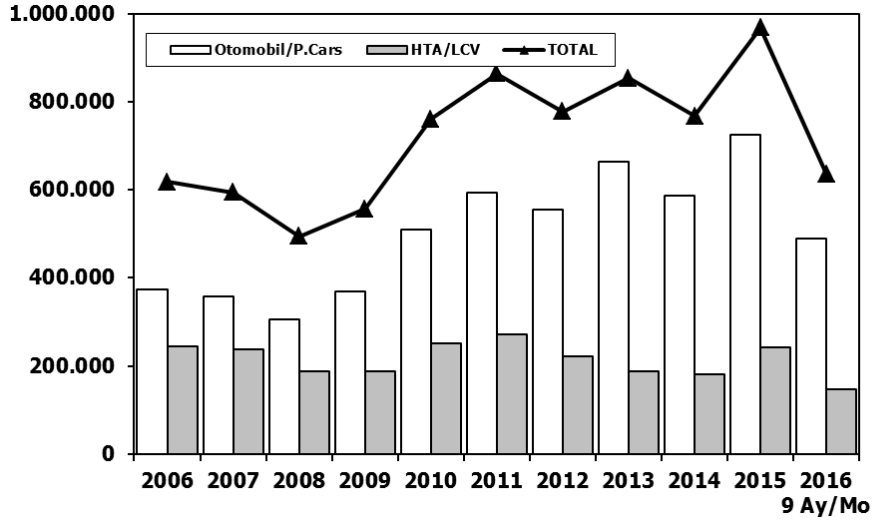
LCV Total Market (x1000)



Aylar / Months	10 Yil Ort. 10 Yrs Avr. (x1000)	2016 (x1000)	%	1	2	3	4	5	6	7	8	9	10	11	12	9 Ay/Mo	Total	
				11.411	16.009	23.056	23.861	29.708	21.373	14.598	18.894	18.592	15.305	21.390	30.436	177.502	244.633	
1	10,0	9,4	-6,3	9.931	11.972	17.554	17.162	18.871	18.548	19.244	22.089	18.919	20.156	23.670	39.181	154.290	237.297	
2	12,5	12,2	-2,5	12.939	14.055	19.502	17.388	17.121	17.600	16.626	17.568	16.879	13.096	9.052	16.199	149.678	188.025	
3	18,3	19,0	3,8	2008	6.433	7.250	14.489	16.438	19.003	20.048	12.208	29.235	7.205	10.181	31.745	138.176	187.307	
4	18,3	19,3	5,3	2009	7.501	10.521	17.811	18.397	18.910	18.810	19.946	19.542	21.337	25.545	23.901	48.908	152.775	251.129
5	19,8	20,1	1,5	2010	15.024	19.659	24.380	23.860	24.344	24.859	19.526	19.531	20.165	21.913	18.706	38.953	191.348	270.920
6	18,9	20,4	8,4	2011	8.468	12.135	17.614	17.304	20.403	20.218	17.773	16.912	20.269	16.498	19.413	34.474	151.096	221.481
7	16,9	13,0	-23,1	2012	9.688	11.493	16.989	16.576	19.085	15.806	15.884	13.432	15.038	11.029	15.184	28.519	133.991	188.723
8	17,7	17,6	-0,6	2013	8.302	7.854	9.769	10.536	11.742	12.885	13.305	15.068	17.269	15.759	20.926	36.935	106.730	180.350
9	19,5	16,3	-16,5	2014	10.117	14.514	21.626	21.391	18.664	18.392	19.618	20.824	16.937	16.301	22.204	41.833	162.083	242.421
<b>Total</b>	<b>151,8</b>	<b>147,1</b>	<b>-3,1</b>	2015	9.355	12.237	18.973	19.269	20.072	20.429	12.967	17.579	16.253			147.134	147.134	

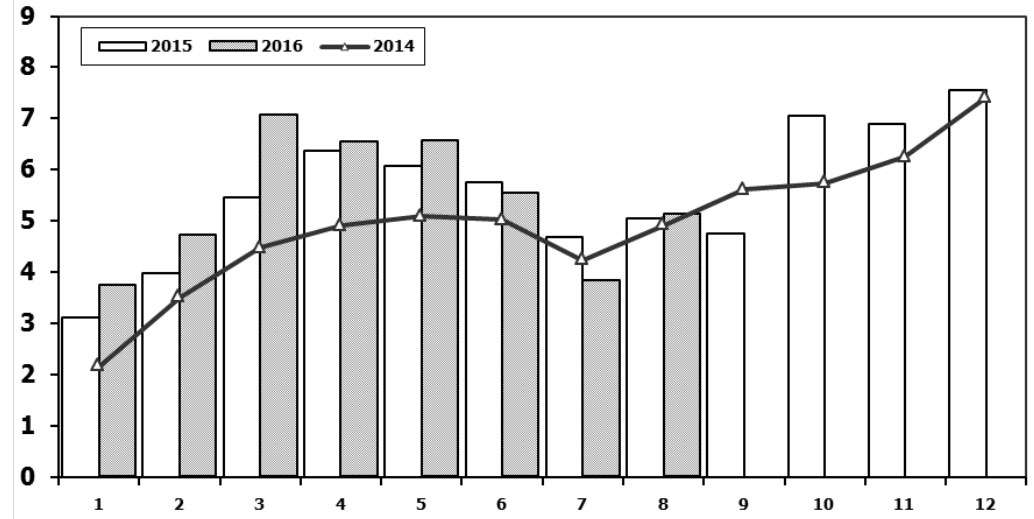
## Hafif Araç Pazarı (AYA < 3.5 Ton)

Light Vehicle Market (GVW < 3.5 Ton)



## Traktör Pazarı (x1000)

F. Tractor Market (x1000)



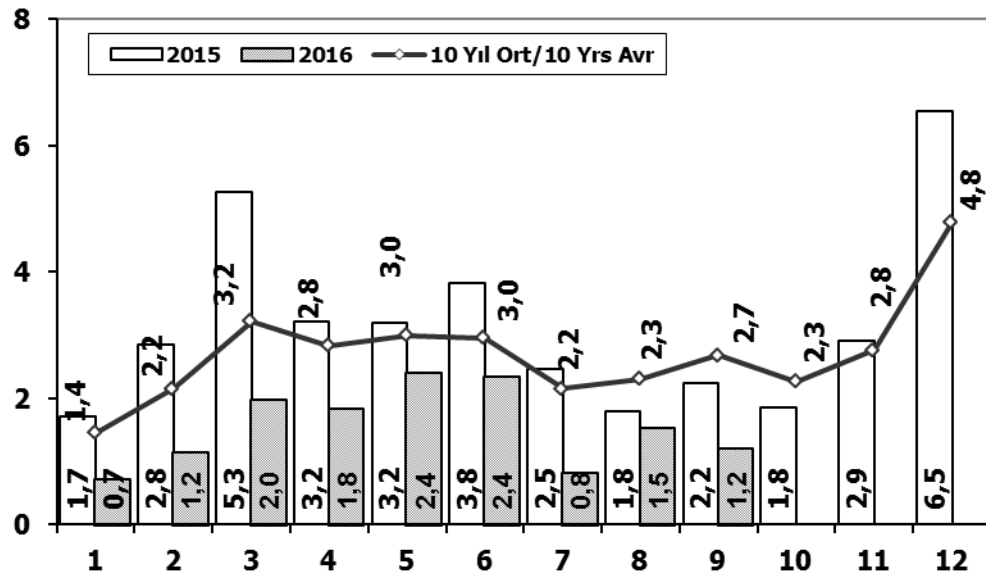
	2006	2007	2008	2009	2010	2011	2012	2013	2014	2015	2016 9 Ay/Mo
Otomobil/P.Cars	373.219	357.465	305.998	369.819	509.784	593.519	556.280	664.655	587.331	725.596	489.365
HTA/LCV	244.633	237.297	188.025	187.307	251.129	270.920	221.481	188.723	180.350	242.421	147.134
TOTAL	617.852	594.762	494.023	557.126	760.913	864.439	777.761	853.378	767.681	968.017	636.499
HTA/LCV (%)	40	40	38	34	33	31	28	22	23	25	23

	1	2	3	4	5	6	7	8	9	10	11	12	8 Ay/Mo	Total
2006	4.018	2.139	3.201	3.599	5.529	3.401	2.450	2.608	2.820	2.872	3.697	3.373	26.945	39.707
2007	2.816	2.244	3.053	2.657	3.188	3.141	2.497	2.381	3.025	2.755	3.549	3.097	21.977	34.403
2008	2.770	1.855	3.395	3.081	2.769	2.400	2.232	2.485	1.856	1.773	1.305	1.101	20.987	27.022
2009	717	572	688	1.070	1.297	1.256	1.054	1.183	1.117	1.356	1.304	2.144	7.837	13.758
2010	1.111	1.991	2.330	3.039	2.567	2.638	1.965	3.019	2.806	4.424	3.978	6.168	18.660	36.036
2011	2.975	5.242	5.927	5.358	6.016	6.335	4.534	4.051	4.140	5.828	4.943	4.992	40.438	60.341
2012	2.362	1.983	4.348	6.579	6.273	4.569	3.837	3.158	3.618	4.027	4.807	4.757	33.109	50.318
2013	2.161	2.432	4.005	4.585	5.616	3.136	4.574	3.408	4.935	4.762	5.781	6.891	29.917	52.286
2014	2.169	3.512	4.476	4.905	5.094	5.028	4.233	4.920	5.619	5.743	6.250	7.409	34.337	59.358
2015	3.124	3.984	5.460	6.383	6.078	5.748	4.677	5.044	4.765	7.049	6.898	7.564	40.498	66.774
2016	3.739	4.731	7.067	6.546	6.575	5.543	3.833	5.134					43.168	43.168

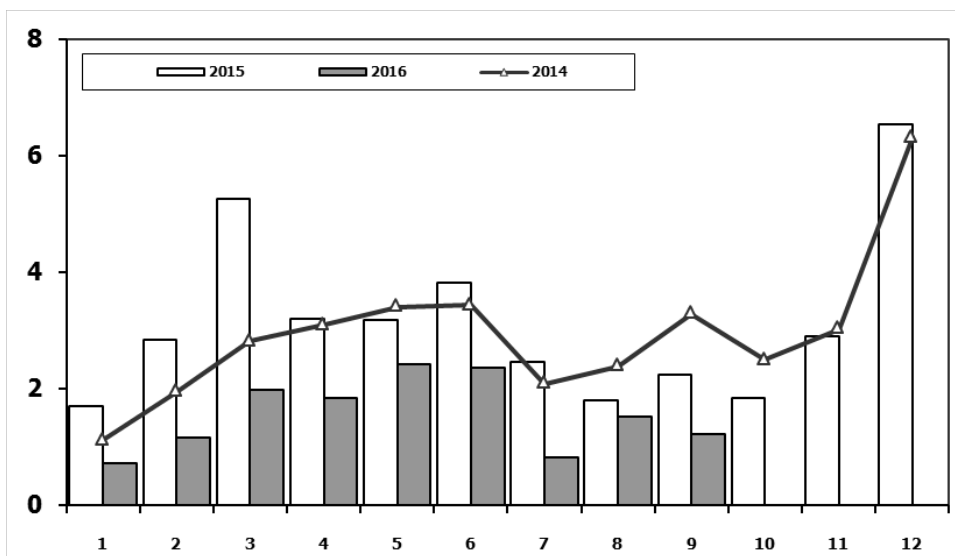
Kaynak: TÜİK trafik kayıtları.

Rakamlar, son iki model yılına ait traktör tescillerinden oluşmaktadır.

## Kamyon Pazarının Analizi (x1000) AYA > 5 Ton Truck Market Analysis (x1000) GVW > 5 Ton



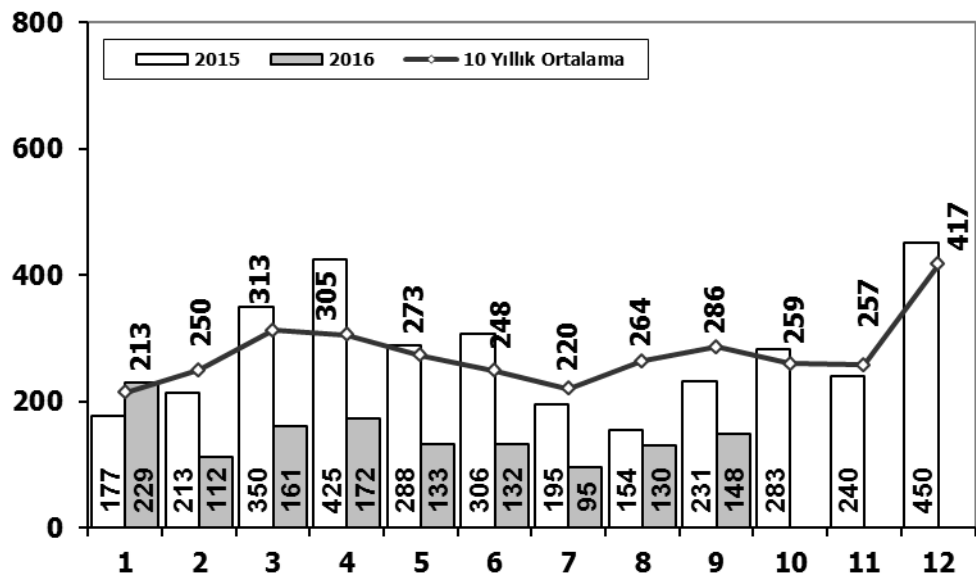
## Kamyon Pazarı (x1000) AYA > 5 Ton Truck Market (x1000) GVW > 5 Ton



Aylar / Months	10 Yil Ort. 10 Yrs Avr. (x1000)	2016 (x1000)	%	1	2	3	4	5	6	7	8	9	10	11	12	9 Ay/Mo	Total	
1	1,4	0,7	-50,5	1.767	3.310	4.467	4.180	4.449	3.398	2.472	3.142	3.052	2.926	3.550	5.358	30.237	42.071	
2	2,2	1,2	-46,5	1.554	2.055	3.065	2.940	2.865	2.613	2.372	3.145	2.988	2.886	3.258	4.444	23.597	34.185	
3	3,2	2,0	-38,4	1.797	2.309	2.621	2.578	2.459	2.526	2.067	2.377	2.390	1.790	1.512	1.834	21.124	26.260	
4	2,8	1,8	-35,2	2009	771	759	1.034	1.342	1.355	1.651	1.156	1.205	1.780	866	981	2.015	11.053	14.915
5	3,0	2,4	-19,2	2010	777	968	1.772	1.807	1.966	2.205	2.093	2.446	2.444	3.071	3.136	5.677	16.478	28.362
6	3,0	2,4	-20,4	2011	2.552	3.292	4.418	3.754	3.803	3.749	1.996	2.478	3.081	2.774	3.108	5.787	29.123	40.792
7	2,2	0,8	-61,5	2012	1.375	2.159	3.595	2.697	3.321	3.250	2.450	2.277	2.991	2.244	3.006	5.000	24.115	34.365
8	2,3	1,5	-33,8	2013	1.077	1.931	3.127	2.720	3.145	2.951	2.411	1.845	2.554	1.801	3.173	5.025	21.761	31.760
9	2,7	1,2	-55,3	2014	1.117	1.949	2.818	3.092	3.405	3.438	2.083	2.390	3.281	2.494	3.028	6.313	23.573	35.408
Total	22,8	14,0	-38,4	2015	1.705	2.841	5.270	3.208	3.190	3.824	2.463	1.798	2.244	1.848	2.902	6.540	26.543	37.833
				2016	718	1.154	1.984	1.835	2.420	2.358	830	1.529	1.199				14.027	14.027

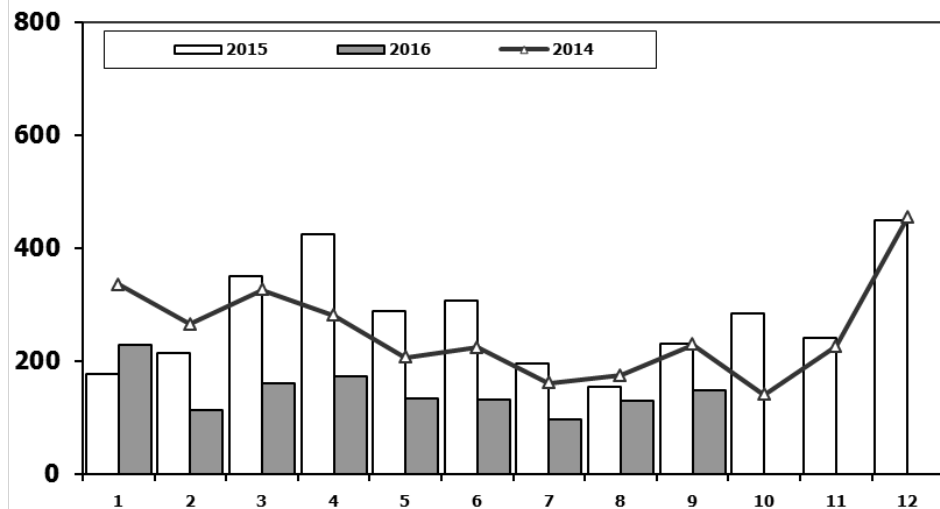
## Midibüs Pazarının Analizi (7-9 mt / 25-35 Kişilik)

### Midibus Market Analysis (7-9 mt / 25-35 Passengers)



## Midibüs Pazarı (7-9 mt / 25-35 Kişilik Midibüs)

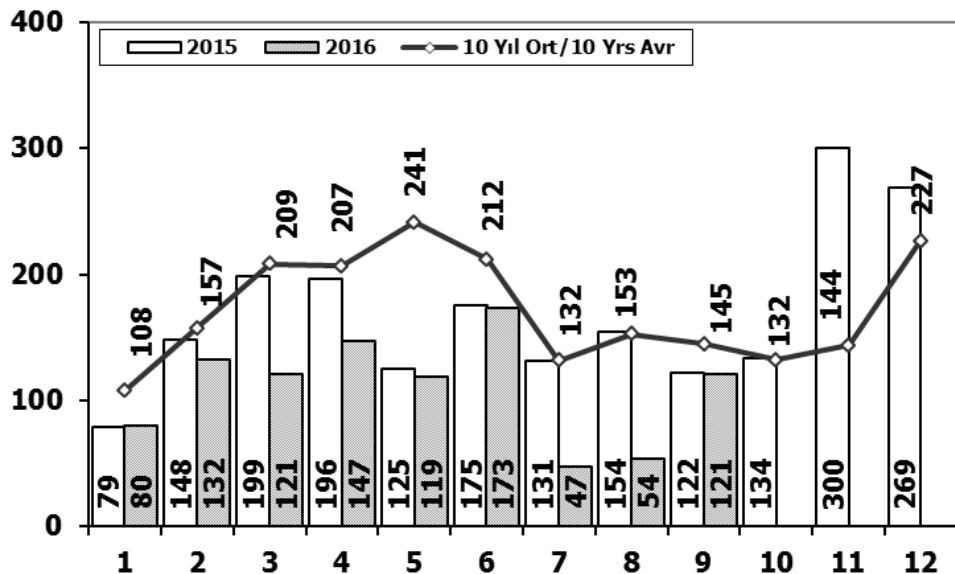
### Midibus Market (7-9 mt / 25-35 Passengers)



Aylar / Months	10 Yıl Ort. / 10 Yrs Avr.	2016	%	1	2	3	4	5	6	7	8	9	10	11	12	9 Ay/Mo	Total
1	213	229	7	207	297	406	388	381	266	230	353	322	253	305	401	2.850	3.809
2	250	112	-55	207	272	404	238	302	283	164	365	399	279	283	465	2.634	3.661
3	313	161	-49	208	476	436	512	419	331	368	380	341	352	246	270	3.654	4.522
4	305	172	-44	209	124	160	220	174	198	160	175	168	143	206	323	1.533	2.205
5	273	133	-51	210	154	185	167	140	138	129	246	236	206	202	437	1.527	2.372
6	248	132	-47	211	131	185	167	140	138	129	246	236	206	202	437	1.527	2.372
7	220	95	-57	212	138	195	316	280	258	211	305	301	276	260	270	2.298	3.104
8	264	130	-51	213	179	257	277	229	239	216	249	325	269	189	398	2.228	3.084
9	286	148	-48	214	191	268	289	276	283	241	235	305	392	415	697	2.455	3.959
10	286	148	-48	215	335	265	326	280	223	161	174	229	140	226	454	2.199	3.019
11	213	229	107	216	265	326	280	206	223	161	174	229	140	226	454	2.199	3.019
12	417	450	83	217	229	277	229	257	239	216	249	325	269	189	398	2.228	3.084
<b>Total</b>	<b>2.372</b>	<b>1.312</b>	<b>-45</b>	<b>206</b>	<b>229</b>	<b>112</b>	<b>161</b>	<b>172</b>	<b>133</b>	<b>132</b>	<b>95</b>	<b>130</b>	<b>148</b>			<b>1.312</b>	<b>1.312</b>

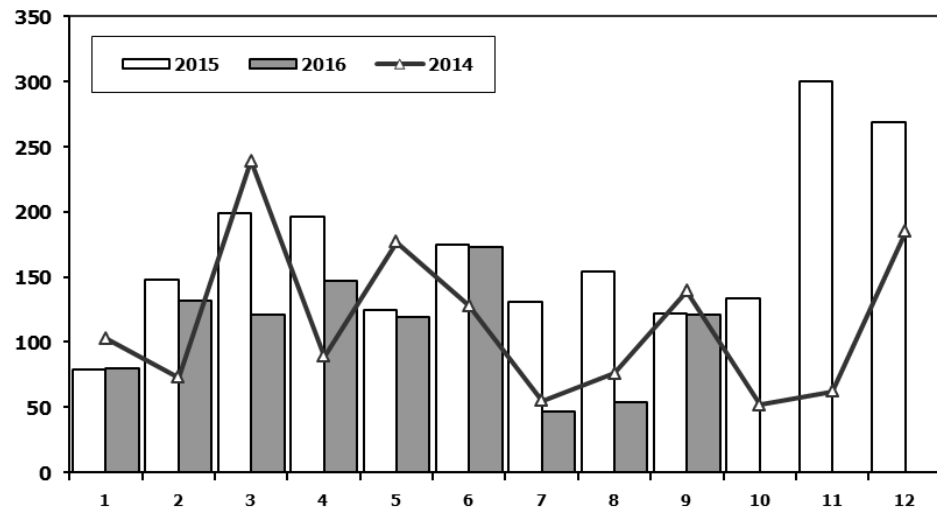
## Otobüs Pazarının Analizi

Bus Market Analysis



## Otobüs Pazarı

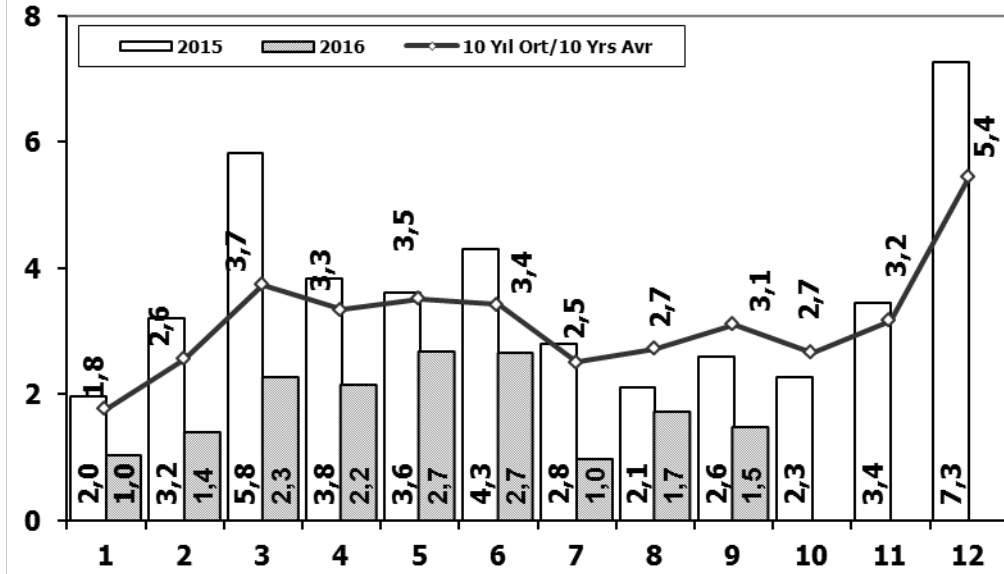
Bus Market



Aylar / Months	10 Yıl Ort. / 10 Yrs Avr.	2016	%	1	2	3	4	5	6	7	8	9	10	11	12	9 Ay/Mo	Total
1	108	80	-26	78	101	165	247	230	184	84	112	146	84	176	176	1.347	1.783
2	157	132	-16	72	191	129	89	150	91	91	103	110	168	163	241	1.026	1.598
3	209	121	-42	77	85	108	176	151	212	101	165	166	121	141	236	1.241	1.739
4	207	147	-29	200	221	226	224	167	186	85	103	58	75	53	125	1.370	1.623
5	241	119	-51	23	42	102	159	145	151	151	189	107	99	106	251	1.069	1.525
6	212	173	-18	76	198	218	306	364	283	113	189	132	169	170	314	1.879	2.532
7	132	47	-64	120	87	201	139	379	225	152	174	252	226	140	315	1.729	2.410
8	153	54	-65	349	425	498	444	525	483	352	260	215	192	128	156	3.551	4.027
9	145	121	-16	103	73	239	89	177	128	55	76	139	52	62	185	1.079	1.378
2015	79	148	199	196	125	175	131	154	122	134	300	269	1.329	2.032			
2016	80	132	121	147	119	173	47	54	121						994	994	

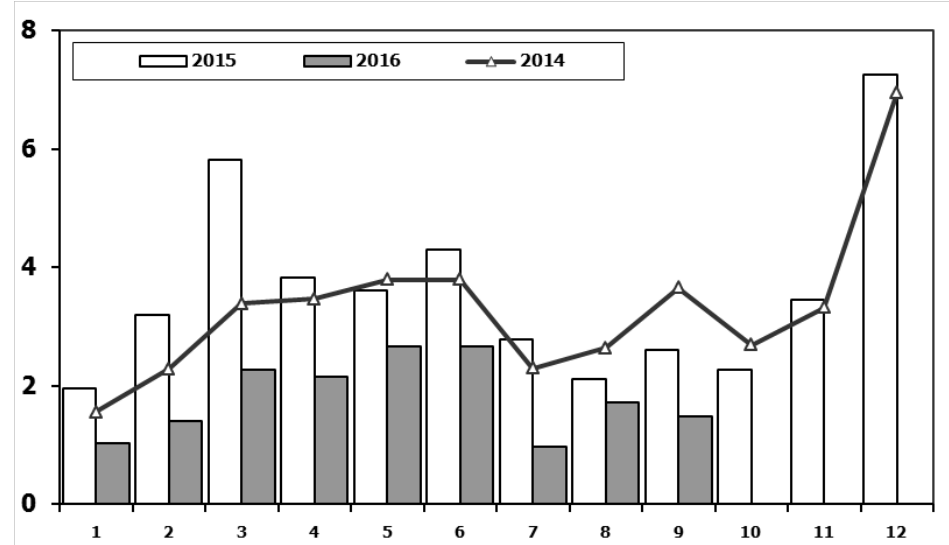
## Ağır Ticari Araç Pazarının Analizi (x1000)

HCV Market Analysis (x1000)



## Ağır Ticari Araç Pazarı (x1000)

HCV Market (x1000)

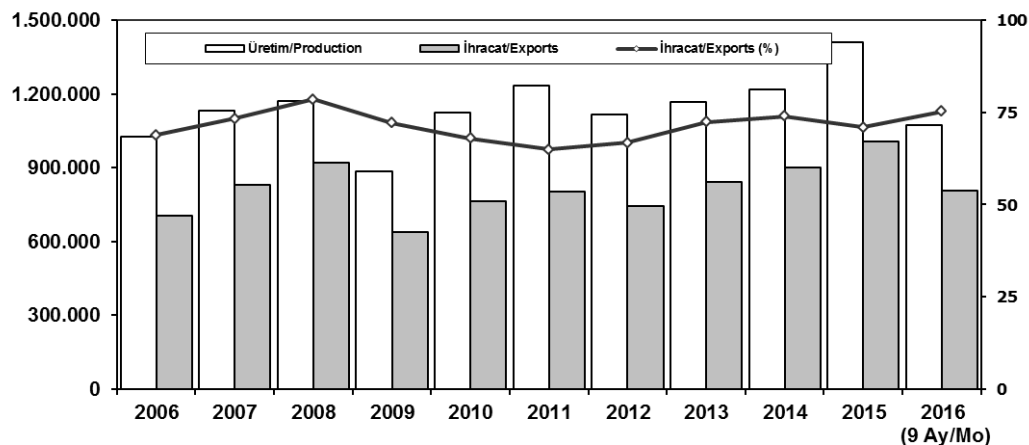


Aylar / Months	10 Yıl Ort. 10 Yrs Avr. (x1000)	2016 (x1000)	%
1	1,8	1,0	-42,0
2	2,6	1,4	-45,5
3	3,7	2,3	-39,4
4	3,3	2,2	-35,6
5	3,5	2,7	-23,9
6	3,4	2,7	-22,1
7	2,5	1,0	-61,2
8	2,7	1,7	-37,2
9	3,1	1,5	-52,8
<b>Total</b>	<b>26,7</b>	<b>16,3</b>	<b>-38,8</b>

	1	2	3	4	5	6	7	8	9	10	11	12	9 Ay/Mo	Total
2006	2.052	3.708	5.038	4.815	5.060	3.848	2.786	3.607	3.520	3.263	4.031	5.935	34.434	47.663
2007	1.833	2.518	3.598	3.267	3.317	2.987	2.627	3.613	3.497	3.333	3.704	5.150	27.257	39.444
2008	2.265	2.870	3.165	3.266	3.029	3.069	2.536	2.922	2.897	2.263	1.899	2.340	26.019	32.521
2009	1.025	1.104	1.420	1.786	1.696	2.035	1.401	1.483	2.006	1.084	1.240	2.463	13.956	18.743
2010	955	1.141	2.059	2.133	2.251	2.494	2.373	2.881	2.787	3.376	3.444	6.365	19.074	32.259
2011	2.766	3.685	4.930	4.376	4.447	4.290	2.320	2.972	3.514	3.219	3.538	6.371	33.300	46.428
2012	1.674	2.503	4.073	3.065	3.957	3.714	2.818	2.700	3.568	2.739	3.335	5.713	28.072	39.859
2013	1.617	2.624	3.914	3.440	3.953	3.675	3.130	2.340	3.074	2.385	3.716	5.878	27.767	39.746
2014	1.555	2.287	3.383	3.461	3.788	3.789	2.299	2.640	3.649	2.686	3.316	6.952	26.851	39.805
2015	1.961	3.202	5.819	3.829	3.603	4.305	2.789	2.106	2.597	2.265	3.442	7.259	30.211	43.177
2016	1.027	1.398	2.266	2.154	2.672	2.663	972	1.713	1.468				16.333	16.333

## İhracat/Üretim (2006-2016) (Traktör dahil)

Exports/Production (2006-2016) (Including F. Tractor)



## Taşıt Araçları İhracatı (2014-2016)

Motor Vehicle Exports (2014-2016)

SEKTÖR/SECTOR	2014	2015	2015	2016	2016/2015 (%)
			9 Ay-9 Mo		
<b>OTOMOBİL / P.Cars</b>	<b>581.993</b>	<b>604.683</b>	<b>428.674</b>	<b>501.954</b>	<b>17</b>
<b>TİCARİ ARAÇLAR / CV</b>	<b>303.187</b>	<b>387.652</b>	<b>278.342</b>	<b>295.176</b>	<b>6</b>
* Kamyonet/Pick-Up	269.995	341.834	239.388	262.578	10
* Minibüs/Minibus	26.458	38.255	33.727	22.827	-32
* Kamyon/Truck	1.281	1.408	895	4.258	376
* Midibüs/Midibus	824	447	293	704	140
* Otobüs/Bus	4.629	5.708	4.039	4.809	19
<b>TAŞIT ARAÇLARI /MV TOTAL</b>	<b>885.180</b>	<b>992.335</b>	<b>707.016</b>	<b>797.130</b>	<b>13</b>
<b>TRAKTÖR/F.TRACTOR</b>	<b>17.014</b>	<b>14.932</b>	<b>10.983</b>	<b>10.176</b>	<b>-7</b>
<b>TOTAL</b>	<b>902.194</b>	<b>1.007.267</b>	<b>717.999</b>	<b>807.306</b>	<b>12</b>

	2006	2007	2008	2009	2010	2011	2012	2013	2014	2015	2016 (9 Ay/Mo)
Üretim/Production	1.026.427	1.132.951	1.171.917	884.466	1.124.982	1.234.637	1.115.233	1.166.043	1.218.848	1.410.034	1.072.369
İhracat/Exports	706.402	829.879	920.763	637.855	763.670	801.112	745.354	843.467	902.194	1.007.267	807.306
İhracat/Exports (%)	69	73	79	72	68	65	67	72	74	71	75

## Otomotiv Ana ve Yan Sanayii İhracatı (ABD \$)

CBU and CKD Exports - \$

Sektör / Sector	2012	2013	2014	2015	2015	2016	2016/2015 (%)
					Ocak-Eylül / January-September		
<b>Toplam Yan Sanayi/Total Component Industry</b>	<b>8.215.636.677</b>	<b>9.065.017.539</b>	<b>9.504.013.791</b>	<b>8.643.538.318</b>	<b>6.416.092.598</b>	<b>6.707.706.362</b>	<b>5%</b>
İç ve Dış Lastik / Tyres	1.199.566.307,01	1.130.005.891,78	1.126.709.610,14	961.494.045	734.223.159	738.936.268	1%
Emniyet Camı / Safety Glasses	120.615.917,59	135.230.309,67	143.208.298,99	124.569.031	91.926.358	89.993.180	-2%
Motor (Engine)	272.085.582,31	319.294.885,46	171.893.752,32	221.897.271	145.799.991	268.048.298	84%
Akümülatör / Batteries	249.831.846,25	306.451.449,47	289.101.198,21	220.618.374	153.761.518	146.804.999	-5%
Diğer Aksam ve Parça / Spare Parts&Components	6.373.537.023,45	7.174.035.002,35	7.773.100.931,83	7.114.959.599	5.290.381.572	5.463.923.616	3%
<b>Toplam Ana Sanayi/Total Vehicle Industry</b>	<b>11.100.115.134</b>	<b>12.491.591.365</b>	<b>13.259.499.977</b>	<b>12.975.346.180</b>	<b>9.295.327.431</b>	<b>10.648.615.102</b>	<b>15%</b>
Otobüs / Bus	855.424.303,62	937.790.962,87	985.983.007,01	1.024.134.143	723.315.804	882.245.379	22%
Midibüs-Minibüs / Minibus- Minibus	161.806.275,12	147.769.644,17	97.685.509,12	130.195.838	97.573.477	160.961.358	65%
Otomobil (P. Cars)	6.068.045.119,19	6.855.475.589,83	7.258.361.005,24	6.881.972.133	5.040.886.728	5.473.161.930	9%
Kamyon-Kamyonet/HCV-LCV	3.433.310.998,81	3.918.798.755,31	4.201.760.813,55	4.263.767.944	2.961.642.021	3.426.837.987	16%
Römork ve Yarı Römork/Trailer-Semi Trailer	195.093.508,21	218.385.731,69	252.354.014,20	252.432.565	170.925.917	210.828.838	23%
Çekici/Truck-Tractor	71.336.634,88	77.907.406,95	38.396.524,81	48.108.959	35.159.687	251.610.656	616%
Tarım Traktörü/Farm Tractor	315.098.293,75	335.463.274,61	424.959.103,39	374.734.597	265.823.797	242.968.953	-9%
<b>Toplam/Total</b>	<b>19.315.751.810</b>	<b>21.556.608.904</b>	<b>22.763.513.769</b>	<b>21.618.884.498</b>	<b>15.711.420.029</b>	<b>17.356.321.463</b>	<b>10%</b>

Kaynak: Uludağ İhracatçı Birlikleri . ÜİB tarafından OSD için özel olarak analiz edilen Otomotiv İhracatı kapsamında; ÜİB Türkiye Genel Otomotiv Endüstrisi sınıflandırmasına kıyasla "Römork ve Yarı Römork", "Tarım Traktörü" verileri dahil edilmekte; "Kullanılmış Araçlar", "İki Tekerlekli Taşıtlar", "Demiryolu Taşıtları" hariç tutulmaktadır.

**Firma Bazında İhracat (Adet)**  
Export Of Member Companies (Unit)

**Sektör Bazında İhracat (1000 \$)**  
Exports on Sectorial Basis

FİRMALAR Companies	2014	2015	Ocak-Eylül January-September	
			2015	2016
			TOFAŞ	142.234
OYAK RENAULT	257.992	270.299	188.342	192.765
FORD OTOSAN	187.921	252.571	179.225	188.010
HYUNDAI ASSAN	179.793	201.276	143.839	151.310
TOYOTA	109.517	81.962	60.337	55.896
TÜRK TRAKTÖR	15.866	14.122	10.378	9.460
M. BENZ TÜRK	3.438	4.252	2.993	6.559
KARSAN	37	3.067	1.932	2.428
HONDA TÜRKİYE	1.560	2.220	1.710	1.802
MAN TÜRKİYE	937	1.493	1.112	1.257
HATTAT TARIM	1.148	810	605	716
OTOKAR	580	720	562	564
A.I.O.S.	748	291	168	511
TEMSA GLOBAL	423	441	262	476
<b>GENEL TOPLAM</b>	<b>902.194</b>	<b>1.007.267</b>	<b>717.999</b>	<b>807.306</b>

SEKTÖRLER	EYLÜL				OCAK-EYLÜL				SON 12 AYLIK			
	2015	2016	Değişim ('16/'15)	Pay(16)	2015	2016	Değişim ('16/'15)	Pay(16)	2015	2016	Değişim ('16/'15)	Pay(16) (%)
Otomotiv Endüstrisi	1.872.659	1.941.983	3,7%	18,6%	15.363.603	17.081.134	11,2%	16,5%	20.717.486	22.869.503	10,4%	16,3%
Hazırgiyim ve Konfeksiyon	1.386.678	1.326.285	-4,4%	12,7%	12.573.449	12.902.101	2,6%	12,4%	16.941.940	17.283.711	2,0%	12,3%
Kimyevi Maddeler ve Mamulleri	1.088.971	1.097.642	0,8%	10,5%	11.535.496	10.273.230	-10,9%	9,9%	15.920.783	14.135.875	-11,2%	10,1%
Elektrik Elektronik ve Hizmet	854.053	810.406	-5,1%	7,8%	7.570.910	7.244.430	-4,3%	7,0%	10.761.272	10.145.558	-5,7%	7,2%
Çelik	759.078	717.978	-5,4%	6,9%	7.690.931	6.659.043	-13,4%	6,4%	10.806.103	8.848.084	-18,1%	6,3%
Tekstil ve Hammaddeleri	648.366	657.563	1,4%	6,3%	5.907.538	5.841.272	-1,1%	5,6%	8.069.121	7.881.032	-2,3%	5,6%
Hububat, Bakliyat, Yağlı Tohumlar ve Mamulleri	438.174	479.225	9,4%	4,6%	4.389.960	4.581.418	4,4%	4,4%	6.205.712	6.318.691	1,8%	4,5%
Demir ve Demir Dışı Metaller	481.265	484.854	0,7%	4,6%	4.650.341	4.432.336	-4,7%	4,3%	6.365.978	6.012.294	-5,6%	4,3%
Makine ve Aksamları	438.245	404.636	-7,7%	3,9%	4.077.612	3.914.755	-4,0%	3,8%	5.594.313	5.360.380	-4,2%	3,8%
Mobilya, Kağıt ve Orman Ürünleri	312.463	319.319	2,2%	3,1%	3.019.005	3.030.811	0,4%	2,9%	4.157.391	4.086.703	-1,7%	2,9%
<b>TOPLAM</b>	<b>10.534.697</b>	<b>10.451.720</b>	<b>-0,8%</b>	<b>100,0%</b>	<b>107.166.025</b>	<b>103.772.098</b>	<b>-3,2%</b>	<b>100,0%</b>	<b>146.394.274</b>	<b>140.444.945</b>	<b>-4,1%</b>	<b>100,0%</b>

Kaynak: TİM

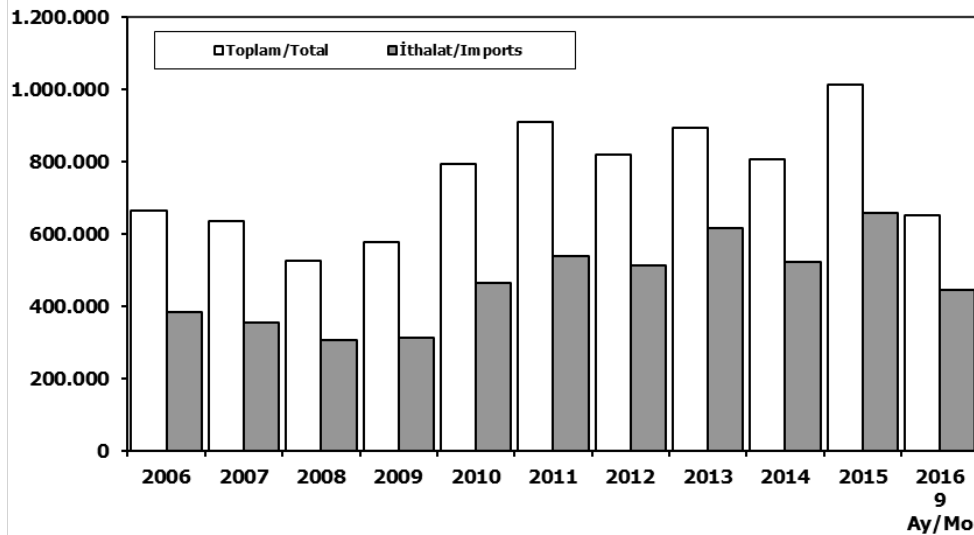
**First 3 Sectors:**

- 1- Automotive Industry
- 2- Ready Wear and Confection
- 3-Chemical Articles and Products

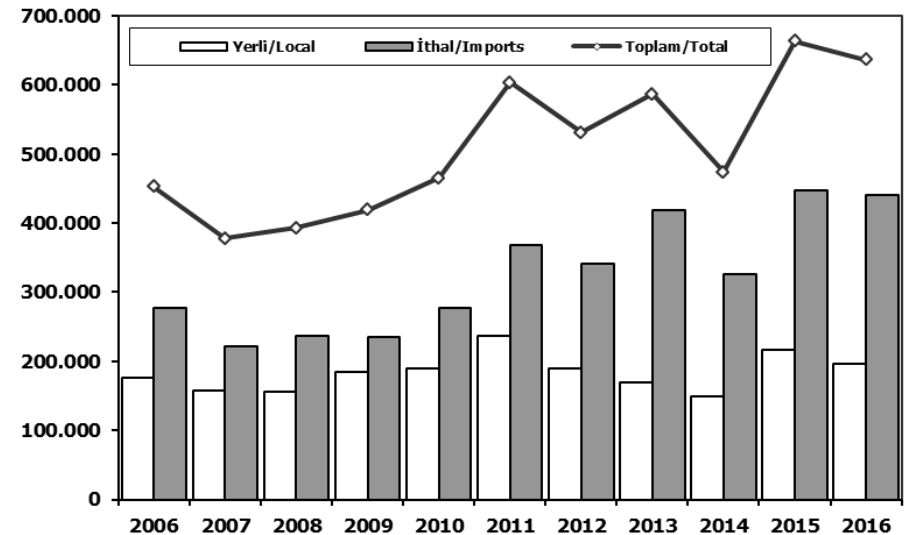
Kaynak: OSD



## Toplam Pazar (Otomobil+T.Araç) Total Market (P.Cars+C.V)



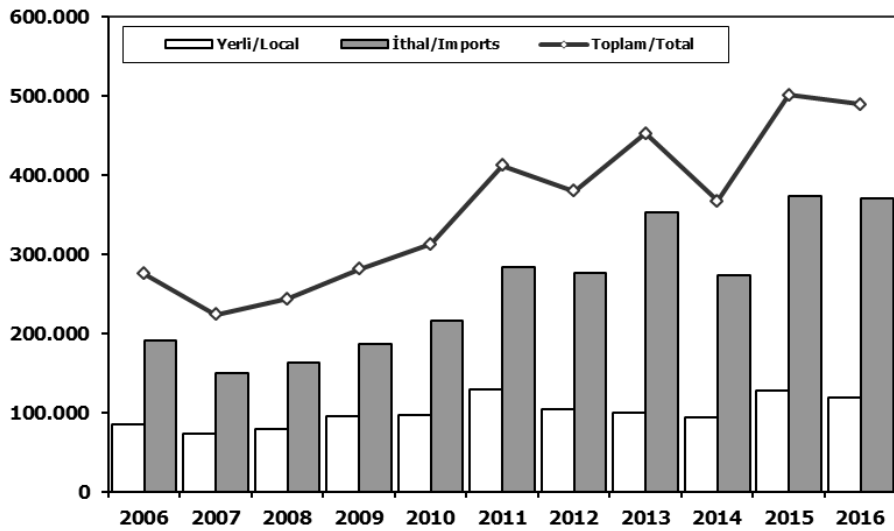
## Hafif Araçlar Pazarı (2006-2016 Ocak-Eylül) LV Market (2006-2016 January-September)



	2006	2007	2008	2009	2010	2011	2012	2013	2014	2015	2015 9 Ay/Mo	2016 9 Ay/Mo		2006	2007	2008	2009	2010	2011	2012	2013	2014	2015	2016
Toplam/Total	665.515	634.206	526.544	575.869	793.172	910.867	817.620	893.124	807.486	1.011.194	693.199	652.832	Yerli/Local	175.680	156.668	156.560	184.560	188.639	235.848	189.886	168.578	148.365	215.913	195.860
İthalat/Imports	382.460	355.752	306.087	313.921	465.408	538.532	511.694	615.609	522.842	658.690	456.490	446.055	İthal/Imports	276.976	221.130	236.248	234.648	276.539	367.603	340.827	417.767	325.133	447.075	440.639
İthalat/Imports (%)	57	56	58	55	59	59	63	69	65	65	66	68	Toplam/Total	452.656	377.798	392.808	419.208	465.178	603.451	530.713	586.345	473.498	662.988	636.499
													İthalat/Imports (%)	61	59	60	56	59	61	64	71	69	67	69

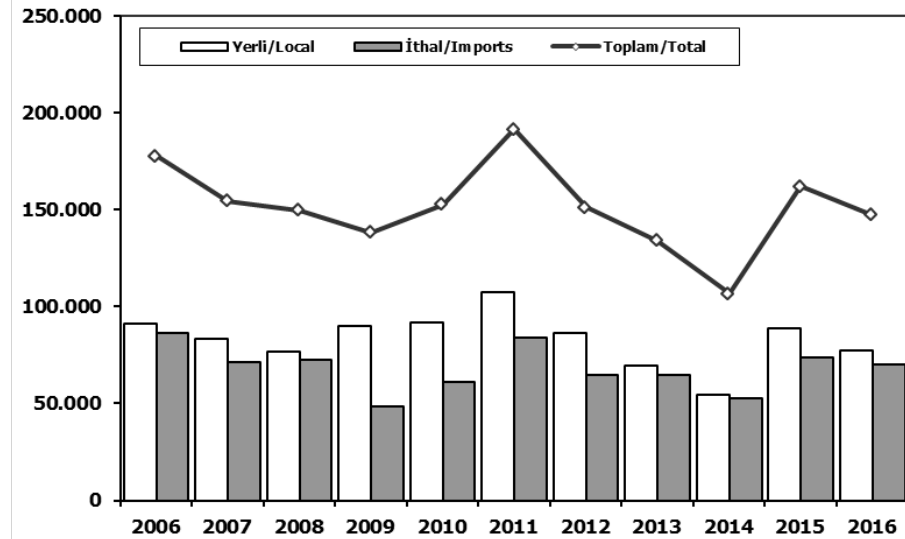
## Otomobil Pazarı (2006-2016 Ocak-Eylül)

### P.Cars Market (2006-2016 January-September)



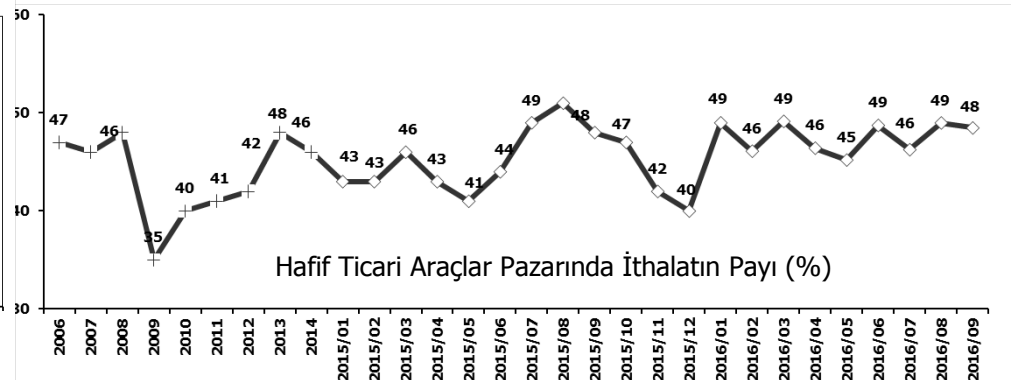
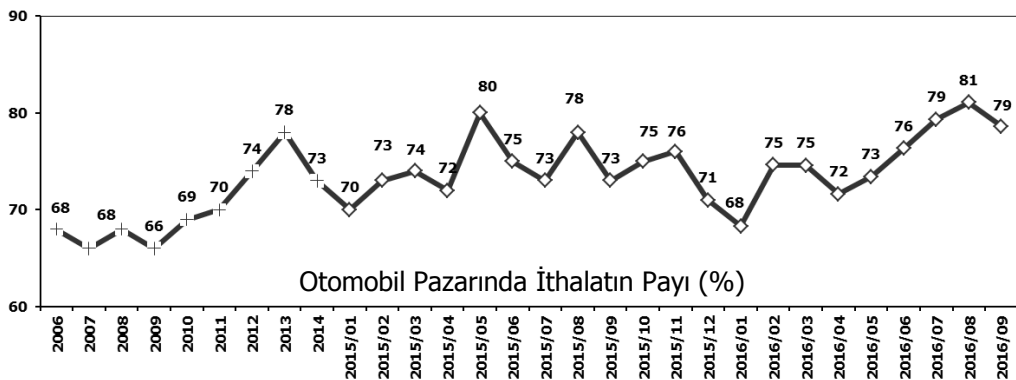
## Hafif Ticari Araçlar Pazarı (2006-2016 Ocak-Eylül)

### Light Commercial Vehicle Market (2006-2016 January-September)



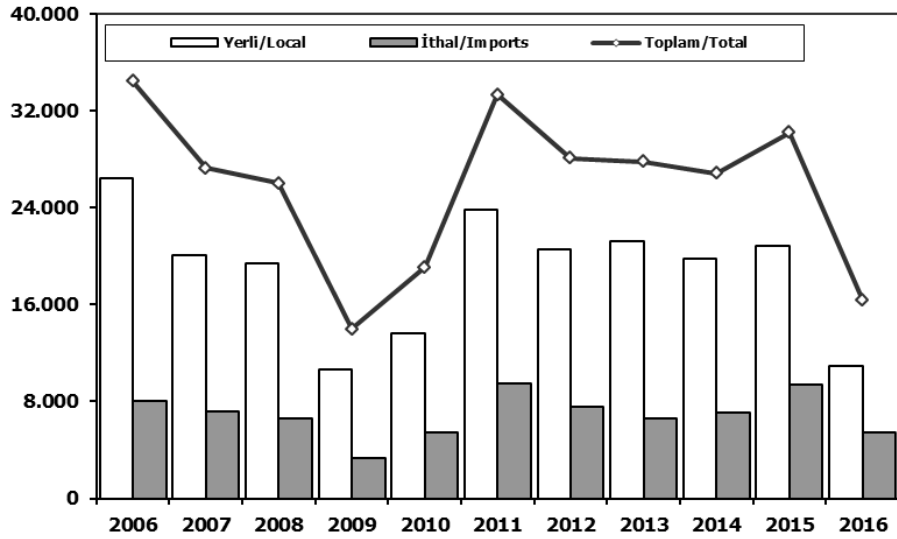
	2006	2007	2008	2009	2010	2011	2012	2013	2014	2015	2016
Yerli/Local	84.372	73.551	79.661	94.733	96.921	128.497	103.676	99.279	94.199	127.382	118.694
İthal/Imports	190.782	149.957	163.469	186.299	215.482	283.606	275.941	353.075	272.569	373.523	370.671
Toplam/Total	275.154	223.508	243.130	281.032	312.403	412.103	379.617	452.354	366.768	500.905	489.365
İthalat/Imports (%)	69	67	67	66	69	69	73	78	74	75	76

	2006	2007	2008	2009	2010	2011	2012	2013	2014	2015	2016
Yerli/Local	91.308	83.117	76.899	89.827	91.718	107.351	86.210	69.299	54.166	88.531	77.166
İthal/Imports	86.194	71.173	72.779	48.349	61.057	83.997	64.886	64.692	52.564	73.552	69.968
Toplam/Total	177.502	154.290	149.678	138.176	152.775	191.348	151.096	133.991	106.730	162.083	147.134
İthalat/Imports (%)	49	46	49	35	40	44	43	48	49	45	48



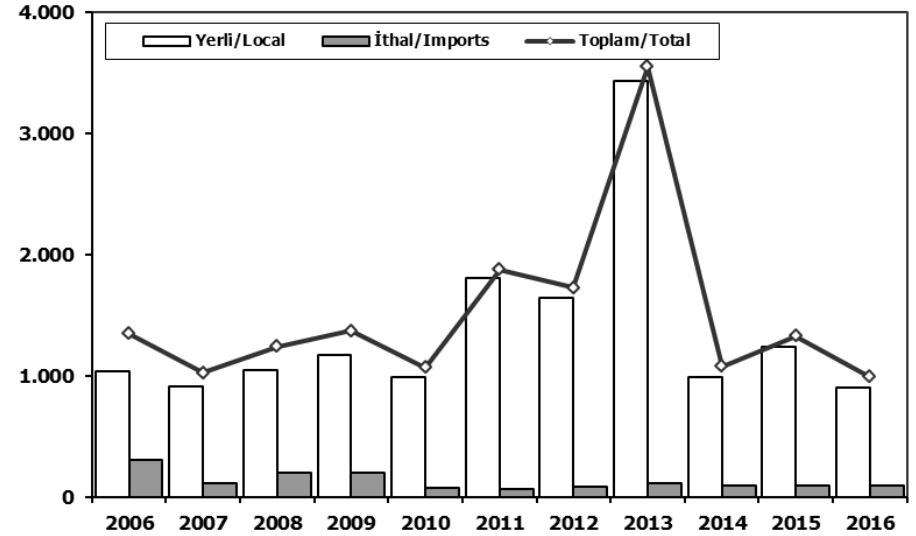
## Ağır Ticari Araçlar Pazarı (2006-2016 Ocak-Eylül)

### HCV Market (2006-2016 January-September)



## Otobüs Pazarı (2006-2016 Ocak-Eylül)

### Bus Market (2006-2016 January-September)

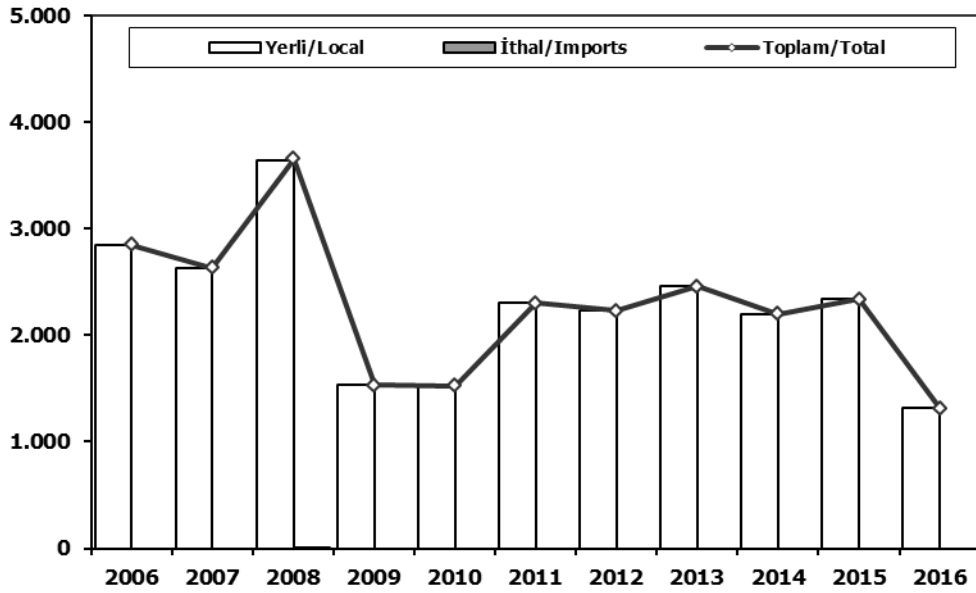


	2006	2007	2008	2009	2010	2011	2012	2013	2014	2015	2016
Yerli/Local	26.391	20.062	19.440	10.649	13.592	23.815	20.530	21.176	19.758	20.796	10.917
İthal/Imports	8.043	7.195	6.579	3.307	5.482	9.485	7.542	6.591	7.093	9.415	5.416
Toplam/Total	34.434	27.257	26.019	13.956	19.074	33.300	28.072	27.767	26.851	30.211	16.333
İthalat/Imports (%)	23	26	25	24	29	28	27	24	26	31	33

	2006	2007	2008	2009	2010	2011	2012	2013	2014	2015	2016
Yerli/Local	1.042	913	1.043	1.169	993	1.811	1.640	3.436	989	1.239	904
İthal/Imports	305	113	198	201	76	68	89	115	90	90	90
Toplam/Total	1.347	1.026	1.241	1.370	1.069	1.879	1.729	3.551	1.079	1.329	994
İthalat/Imports (%)	23	11	16	15	7	4	5	3	8	7	9

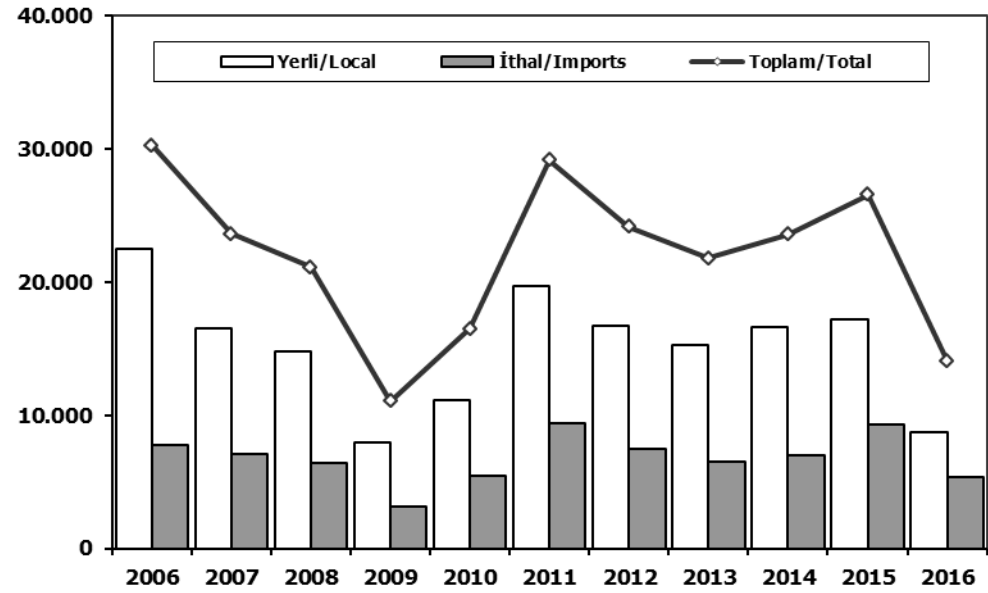
## Midibüs Pazarı (2006-2016 Ocak-Eylül) (7-9 mt / 25-35 Kişilik)

Midibus Market (2006-2016 January-September) (7-9 mt / 25-35 Passengers)



## Kamyon Pazarı (2006-2016 Ocak-Eylül)

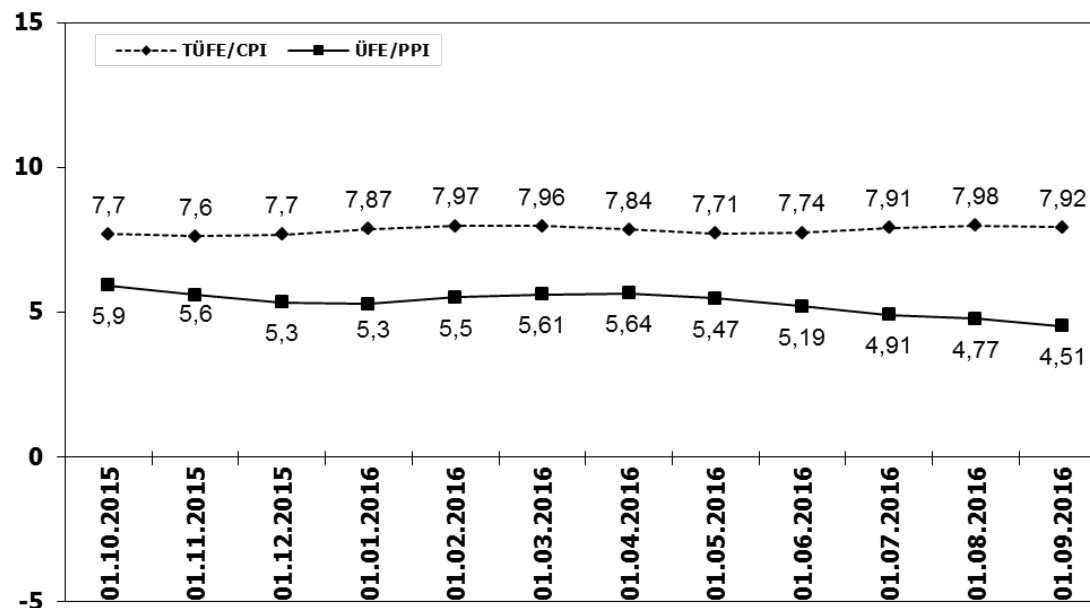
Truck Market (2006-2016 January-September)



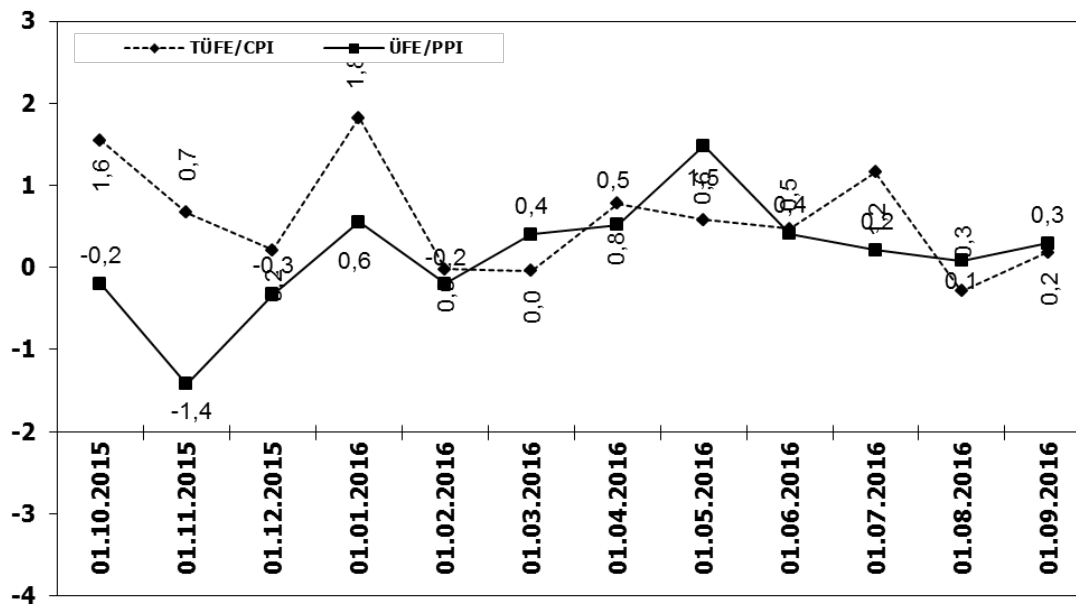
	2006	2007	2008	2009	2010	2011	2012	2013	2014	2015	2016
Yerli/Local	2.850	2.634	3.643	1.533	1.527	2.298	2.228	2.455	2.199	2.339	1.312
İthal/Imports	0	0	11	0	0	0	0	0	0	0	0
Toplam/Total	2.850	2.634	3.654	1.533	1.527	2.298	2.228	2.455	2.199	2.339	1.312
İthalat/Imports (%)	0	0	0	0	0	0	0	0	0	0	0

	2006	2007	2008	2009	2010	2011	2012	2013	2014	2015	2016
Yerli/Local	22.499	16.515	14.754	7.947	11.072	19.706	16.662	15.285	16.570	17.218	8.701
İthal/Imports	7.738	7.082	6.370	3.106	5.406	9.417	7.453	6.476	7.003	9.325	5.326
Toplam/Total	30.237	23.597	21.124	11.053	16.478	29.123	24.115	21.761	23.573	26.543	14.027
İthalat/Imports (%)	26	30	30	28	33	32	31	30	30	35	38

## TÜFE ve ÜFE'nin Yıllık Değişimi (%) CPI and PPI Yearly Changes (%)



## TÜFE ve ÜFE'nin Aylık Değişimi (%) CPI and PPI Monthly Changes (%)



## 2016 Otomotiv Sanayii Dış Satışlar 2016 Automotive Industry Exports Sales

TIPLER-Types	Ocak January	Şubat February	Mart March	Nisan April	Mayıs May	Haziran June	Temmuz July	Ağustos August	Eylül September	Ekim October	Kasım November	Aralık December	TOPLAM Total
<b>Otomobil</b>	<b>38.621</b>	<b>60.149</b>	<b>60.631</b>	<b>55.557</b>	<b>60.692</b>	<b>63.103</b>	<b>49.696</b>	<b>51.748</b>	<b>61.757</b>	<b>0</b>	<b>0</b>	<b>0</b>	<b>501.954</b>
OTOMOBİL-Pass. Car	38.621	60.149	60.631	55.557	60.692	63.103	49.696	51.748	61.757	0	0	0	501.954
<b>TİCARİ ARAÇ</b>	<b>30.179</b>	<b>38.548</b>	<b>38.174</b>	<b>37.583</b>	<b>33.586</b>	<b>37.062</b>	<b>31.770</b>	<b>18.402</b>	<b>29.872</b>	<b>0</b>	<b>0</b>	<b>0</b>	<b>295.176</b>
* KAMYONET-Pick Up	28.779	36.960	36.393	35.857	28.361	29.086	26.410	15.178	25.554	0	0	0	262.578
* KAMYON-Truck	158	335	325	420	501	552	741	450	776	0	0	0	4.258
* MIDİBÜS-Midibus	37	39	68	72	82	88	51	182	85	0	0	0	704
* MINİBÜS-Minibus	723	605	804	674	4.053	6.697	4.247	2.034	2.990	0	0	0	22.827
* OTOBÜS-Bus	482	609	584	560	589	639	321	558	467	0	0	0	4.809
<b>Traktör</b>	<b>1.340</b>	<b>1.122</b>	<b>1.340</b>	<b>1.327</b>	<b>1.215</b>	<b>1.187</b>	<b>1.339</b>	<b>635</b>	<b>671</b>	<b>0</b>	<b>0</b>	<b>0</b>	<b>10.176</b>
TRAKTÖR-F.Tractor	1.340	1.122	1.340	1.327	1.215	1.187	1.339	635	671	0	0	0	10.176
<b>TOPLAM-Total</b>	<b>70.140</b>	<b>99.819</b>	<b>100.145</b>	<b>94.467</b>	<b>95.493</b>	<b>101.352</b>	<b>82.805</b>	<b>70.785</b>	<b>92.300</b>	<b>0</b>	<b>0</b>	<b>0</b>	<b>807.306</b>

Otomobil													
FİRMALAR-Companies	Ocak January	Şubat February	Mart March	Nisan April	Mayıs May	Haziran June	Temmuz July	Ağustos August	Eylül September	Ekim October	Kasım November	Aralık December	TOPLAM Total
FORD OTOSAN	1.559	1.341	1.523	1.515	1.063	1.660	1.261	1.119	1.392				12.433
HONDA TÜRKİYE	149	0	526	60	230	124	63	106	544				1.802
HYUNDAI ASSAN	18.350	18.300	19.800	16.180	17.300	19.100	11.300	14.560	16.420				151.310
OYAK RENAULT	9.605	25.721	24.792	24.166	27.251	26.136	17.015	17.660	20.419				192.765
TOFAŞ	4.667	8.671	8.032	8.530	9.984	13.068	11.365	9.122	14.309				87.748
TOYOTA	4.291	6.116	5.958	5.106	4.864	3.015	8.692	9.181	8.673				55.896
<b>TOPLAM-Total</b>	<b>38.621</b>	<b>60.149</b>	<b>60.631</b>	<b>55.557</b>	<b>60.692</b>	<b>63.103</b>	<b>49.696</b>	<b>51.748</b>	<b>61.757</b>	<b>0</b>	<b>0</b>	<b>0</b>	<b>501.954</b>

Kamyonet													
FİRMALAR-Companies	Ocak January	Şubat February	Mart March	Nisan April	Mayıs May	Haziran June	Temmuz July	Ağustos August	Eylül September	Ekim October	Kasım November	Aralık December	TOPLAM Total
FORD OTOSAN	18.721	22.710	23.358	20.607	12.878	14.587	16.204	9.650	13.731				152.446
KARŞAN	67	229	77	35	392	421	319	350	354				2.244
OTOKAR	0	0	33	0	0	9	0	24	18				84
TOFAŞ	9.991	14.021	12.925	15.215	15.091	14.069	9.887	5.154	11.451				107.804
<b>TOPLAM-Total</b>	<b>28.779</b>	<b>36.960</b>	<b>36.393</b>	<b>35.857</b>	<b>28.361</b>	<b>29.086</b>	<b>26.410</b>	<b>15.178</b>	<b>25.554</b>	<b>0</b>	<b>0</b>	<b>0</b>	<b>262.578</b>

Minibüs													
FİRMALAR-Companies	Ocak January	Şubat February	Mart March	Nisan April	Mayıs May	Haziran June	Temmuz July	Ağustos August	Eylül September	Ekim October	Kasım November	Aralık December	TOPLAM Total
FORD OTOSAN	721	595	749	674	4.050	6.689	4.240	2.023	2.963				22.704
KARŞAN	2	10	55	0	3	8	7	11	27				123
<b>TOPLAM-Total</b>	<b>723</b>	<b>605</b>	<b>804</b>	<b>674</b>	<b>4.053</b>	<b>6.697</b>	<b>4.247</b>	<b>2.034</b>	<b>2.990</b>	<b>0</b>	<b>0</b>	<b>0</b>	<b>22.827</b>

Kamyon													
FİRMALAR-Companies	Ocak January	Şubat February	Mart March	Nisan April	Mayıs May	Haziran June	Temmuz July	Ağustos August	Eylül September	Ekim October	Kasım November	Aralık December	TOPLAM Total
A.I.O.S.	0	0	0	0	1	0	0	0	1				2
FORD OTOSAN	12	13	71	64	38	62	23	57	87				427
KARŞAN	0	0	0	1	0	0	0	0	0				1
M. BENZ TÜRK	146	322	254	355	462	490	718	393	688				3.828
<b>TOPLAM-Total</b>	<b>158</b>	<b>335</b>	<b>325</b>	<b>420</b>	<b>501</b>	<b>552</b>	<b>741</b>	<b>450</b>	<b>776</b>	<b>0</b>	<b>0</b>	<b>0</b>	<b>4.258</b>

Midibüs													
FİRMALAR-Companies	Ocak January	Şubat February	Mart March	Nisan April	Mayıs May	Haziran June	Temmuz July	Ağustos August	Eylül September	Ekim October	Kasım November	Aralık December	TOPLAM Total
A.I.O.S.	14	15	29	30	42	54	16	133	67				400
KARŞAN	1	2	0	1	2	0	2	1	0				9
OTOKAR	7	12	24	37	25	31	32	26	13				207
TEMSA GLOBAL	15	10	15	4	13	3	1	22	5				88
<b>TOPLAM-Total</b>	<b>37</b>	<b>39</b>	<b>68</b>	<b>72</b>	<b>82</b>	<b>88</b>	<b>51</b>	<b>182</b>	<b>85</b>	<b>0</b>	<b>0</b>	<b>0</b>	<b>704</b>

Otobüs													
FİRMALAR-Companies	Ocak January	Şubat February	Mart March	Nisan April	Mayıs May	Haziran June	Temmuz July	Ağustos August	Eylül September	Ekim October	Kasım November	Aralık December	TOPLAM Total
A.I.O.S.	0	1	6	7	18	24	1	17	35				109
KARŞAN	0	0	0	0	0	20	0	10	21				51
M. BENZ TÜRK	316	366	344	274	342	295	199	349	246				2.731
MAN TÜRKİYE	131	231	170	151	102	178	67	100	127				1.257
OTOKAR	17	10	33	43	38	72	30	14	16				273
TEMSA GLOBAL	18	1	31	85	89	50	24	68	22				388
<b>TOPLAM-Total</b>	<b>482</b>	<b>609</b>	<b>584</b>	<b>560</b>	<b>589</b>	<b>639</b>	<b>321</b>	<b>558</b>	<b>467</b>	<b>0</b>	<b>0</b>	<b>0</b>	<b>4.809</b>

Traktör													
FİRMALAR-Companies	Ocak January	Şubat February	Mart March	Nisan April	Mayıs May	Haziran June	Temmuz July	Ağustos August	Eylül September	Ekim October	Kasım November	Aralık December	TOPLAM Total
HATTAT TARIM	33	107	82	151	145	111	0	35	52				716
TÜRK TRAKTÖR	1.307	1.015	1.258	1.176	1.070	1.076	1.339	600	619				9.460
<b>TOPLAM-Total</b>	<b>1.340</b>	<b>1.122</b>	<b>1.340</b>	<b>1.327</b>	<b>1.215</b>	<b>1.187</b>	<b>1.339</b>	<b>635</b>	<b>671</b>	<b>0</b>	<b>0</b>	<b>0</b>	<b>10.176</b>

## 2016 Yılı İthal Hafif Araç Satışları 2016 Light Vehicles Import Sales

2016 YILI İTHAL OTOMOBİL SATIŞLARI / P.Cars Import 2016

2015 TOPLAMI 2015 Total	1	2	3	4	5	6	7	8	9	10	11	12	2016 TOPLAMI 2016 Total
VOLKSWAGEN	107.401	2.792	5.763	8.197	7.811	9.597	9.561	7.239	8.438	8.026			67.424
OPEL	47.000	1.263	2.521	3.936	4.775	5.754	5.809	3.495	4.116	3.336			35.005
FORD	43.341	972	2.733	3.347	3.141	3.231	4.439	2.025	2.294	1.813			23.995
DACIA	37.257	1.235	1.963	3.402	3.555	4.179	3.799	2.680	3.120	3.118			27.051
RENAULT	32.683	1.258	2.007	4.030	3.336	3.983	3.759	3.507	4.073	2.471			28.424
B.M.W	31.221	496	2.042	2.080	2.332	3.174	2.640	1.856	2.230	1.806			18.656
MERCEDES BENZ	30.333	1.091	1.701	2.480	2.305	3.080	3.786	1.651	2.456	2.758			21.308
NISSAN	26.421	971	1.534	2.989	2.684	2.546	2.584	1.212	2.183	1.957			18.660
HYUNDAI	25.164	1.148	1.499	2.651	2.344	2.649	2.296	1.286	1.890	1.947			17.710
PEUGEOT	22.808	540	1.730	2.526	1.557	2.349	2.099	1.497	1.601	2.178			16.077
SKODA	22.107	715	1.435	2.640	2.663	2.787	2.865	1.661	2.357	1.854			18.977
AUDI	20.279	911	1.200	1.455	2.148	2.352	1.961	905	903	1.541			13.376
SEAT	16.911	502	853	1.443	2.130	1.726	1.929	1.870	1.943	1.496			13.892
CITROËN	16.520	394	366	1.562	1.684	1.929	1.613	1.221	1.080	1.519			11.368
KIA	13.873	263	574	1.080	1.461	979	1.281	1.435	1.378	954			9.405
TOYOTA	10.949	149	588	955	836	1.040	913	754	1.104	858			7.197
VOLVO	6.939	187	194	311	335	512	465	130	203	222			2.559
HONDA	5.413	366	669	1.077	535	629	617	612	777	852			6.134
FIAT	5.241	162	247	336	278	266	232	171	262	212			2.166
JEEP	3.507	92	161	204	188	187	218	99	152	169			1.470
MAZDA	1.761	50	67	114	157	171	137	127	84	88			995
MINI (İngiliz)	1.739	101	74	134	166	161	143	83	123	147			1.132
SUBARU	1.737	73	112	152	148	165	122	74	103	101			1.050
LAND ROVER	1.577	46	131	318	186	200	201	103	215	169			1.569
MITSUBISHI	1.366	39	71	53	48	79	57	45	61	50			503
PORSCHE	861	55	40	55	59	61	68	32	59	70			499
ALFA ROMEO	847	12	75	149	58	68	48	33	31	32			506
SSANGYONG	605	19	23	37	34	76	70	23	55	47			384
PROTON	500	10	7	10	12	12	0	0	0	0			51
CHERY	394	30	23	12	9	22	25	22	1	0			144
JAGUAR	336	20	25	34	31	33	48	35	41	42			309
SUZUKI	177	7	0	194	151	332	422	234	370	462			2.172
TATA	168	0	0	0	0	0	0	0	0	0			0
SMART	88	0	0	16	13	24	12	5	6	14			90
MASERATI	73	1	6	1	5	3	6	1	5	5			33
INFiniti	43	0	0	0	4	6	23	6	7	11			57
GEELY	25	0	0	0	0	0	0	0	0	0			0
BENTLEY	19	0	1	0	0	1	0	1	0	3			6
LEXUS	13	0	0	6	7	2	3	4	5	4			31
FERRARI	10	3	1	0	4	3	1	0	0	1			13
LAMBORGHINI	6	0	1	0	1	0	1	0	3	0			6
LANCIA	2	0	0	0	0	0	0	0	0	0			0
ASTON MARTIN	0	2	1	2	4	4	3	2	3	4			25
DS	0	8	34	42	35	24	14	19	34	32			242
<b>TOPLAM</b>	<b>537.715</b>	<b>15.983</b>	<b>30.472</b>	<b>48.030</b>	<b>47.230</b>	<b>54.396</b>	<b>54.270</b>	<b>36.155</b>	<b>43.766</b>	<b>40.369</b>	<b>0</b>	<b>0</b>	<b>370.671</b>

2016 YILI İTHAL HAFİF TİCARİ ARAÇ SATIŞLARI / Light Commercial Vehicles Import 2016

2015 TOPLAMI 2015 Total	1	2	3	4	5	6	7	8	9	10	11	12	2016 TOPLAMI 2016 Total
VOLKSWAGEN	31.642	1.736	2.391	3.096	2.674	2.839	2.845	1.845	2.729	2.284			22.439
RENAULT	15.617	451	602	983	1.442	1.466	1.333	761	864	1.189			9.091
FIAT	9.072	272	374	615	333	343	417	309	444	521			3.628
MERCEDES BENZ	8.457	360	549	925	671	684	760	253	485	553			5.240
PEUGEOT	8.212	467	284	471	835	532	1.183	463	819	472			5.526
DACIA	7.555	221	228	380	512	572	429	320	389	502			3.553
CITROËN	6.511	207	213	752	670	398	690	477	592	528			4.527
KIA	4.110	155	196	387	324	464	419	211	354	209			2.719
FORD	4.028	85	189	298	255	428	596	370	487	344			3.052
MITSUBISHI	3.897	324	151	312	329	220	385	244	352	240			2.557
TOYOTA	2.928	34	178	514	402	549	378	310	549	543			3.457
IVECO	2.710	88	131	173	163	246	172	89	142	161			1.365
HYUNDAI	1.612	71	117	138	163	186	158	153	240	176			1.402
ISUZU	333	57	34	90	25	23	32	73	53	24			411
SSANGYONG	303	3	5	16	19	31	38	10	22	17			161
TATA	228	9	0	0	0	0	0	0	0	0			9
NISSAN	7	0	0	175	126	92	121	110	91	116			831
MAZDA	0	0	0	0	0	0	0	0	0	0			0
<b>TOPLAM</b>	<b>107.222</b>	<b>4.540</b>	<b>5.642</b>	<b>9.325</b>	<b>8.943</b>	<b>9.073</b>	<b>9.956</b>	<b>5.998</b>	<b>8.612</b>	<b>7.879</b>	<b>0</b>	<b>0</b>	<b>69.968</b>