



OTOMOTİV SANAYİ DERNEĞİ  
AUTOMOTIVE MANUFACTURERS ASSOCIATION

# AYLIK RAPOR

## Automotive Industry Monthly Report

Ağustos / August 2016

- **Üretim/Production**
- **Satış/Sales**
- **İthalat/Imports**
- **İhracat/Exports**

OSD "OICA" Üyesidir



OSD is a Member of "OICA"

## 2016 Ağustos Ayı Özeti / 2016 August Summary

		AĞUSTOS / AUGUST			8 AY/ 8 MONTHS			SON 12 AYLIK / YoY		
		2015	2016	2016/2015 (%)	2015	2016	2016/2015 (%)	2015	2016	2016/2015 (%)
Üretim/Production	Toplam/Total	76.977	78.087	1	857.297	914.914	7	1.308.241	1.416.413	8
	Otomobil/P.Cars	45.210	52.296	16	499.652	562.692	13	773.719	854.067	10
Pazar/Market	Toplam/Total	84.683	73.269	-13	626.577	583.771	-7	1.003.894	968.388	-4
	Otomobil/P.Cars	61.753	53.977	-13	453.817	438.025	-3	723.642	709.804	-2
İthalat/Import	Toplam/Total	59.322	52.865	-11	413.233	397.389	-4	647.781	642.846	-1
	Otomobil/P.Cars	48.075	43.766	-9	339.378	330.302	-3	530.717	528.639	0
İhracat/Export	Toplam/Total	56.793	69.999	23	616.925	705.350	14	932.132	1.080.760	16
	Otomobil/P.Cars	35.805	51.748	45	376.970	440.197	17	579.870	667.910	15
İhracat / Export (\$)	Toplam/Total **	1.398.409.817	1.708.640.235	22	13.790.610.177	15.385.022.170	12	20.484.032.456	22.493.604.083	10
	Otomobil/P.Cars	371.630.693	585.896.409	58	4.409.619.682	4.763.252.442	8	6.359.480.661	6.951.521.398	9

PARAMETRELER / PARAMETERS		AĞUSTOS / AUGUST			8 AY/ 8 MONTHS			SON 12 AYLIK / YoY		
		2015	2016	2016/2015 (%)	2015	2016	2016/2015 (%)	2015	2016	2016/2015 (%)
ÜFE/PPI		0,98	0,08	**	6,19	3,49	**	6,14	4,51	**
TÜFE/CPI		0,40	-0,29	**	5,27	4,53	**	7,88	7,98	**
Sanayi Endeksi/Industry Index		0,91	0,38	**	6,78	4,68	**	6,86	5,44	**
\$ (*)		2,8438	2,9650	4	2,6355	2,9124	11	2,5079	2,9158	16
EURO (*)		3,1547	3,3065	5	2,9238	3,2394	11	2,8836	3,2285	12
Japon Yeni (*)		2,3060	2,8698	24	2,1640	2,6405	22	2,0942	2,5613	22

(\*) Ortalama Değerler / Average Values

(\*\*) Toplam Sanayi / Total Industry Including Components

*Raporda yer alan üretim adetleri yalnızca OSD üyelerinin verilerini göstermektedir.  
Production units in this report only show the data of OSD members.*

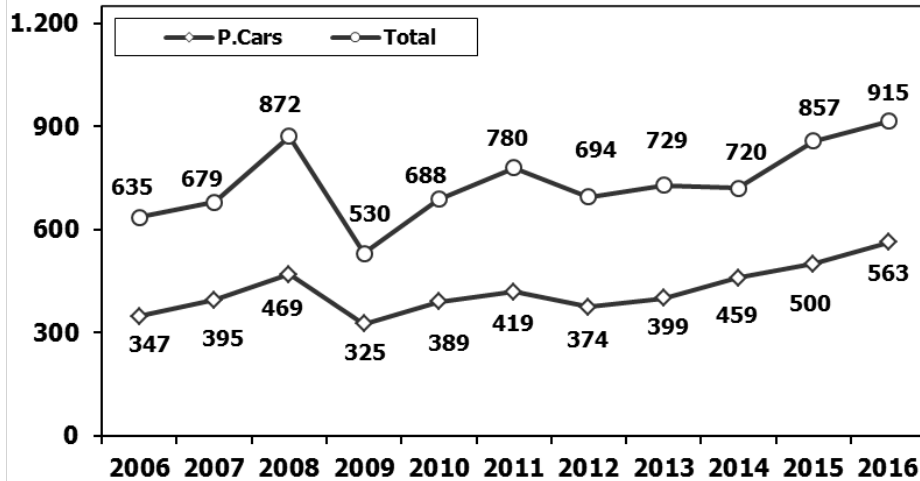
## 2015/2016 Yılları Üretim 2015/2016 Production

K.KAMYON : AYA 3.5-12 Ton (L.Truck:GVW 3.5-12 Ton)

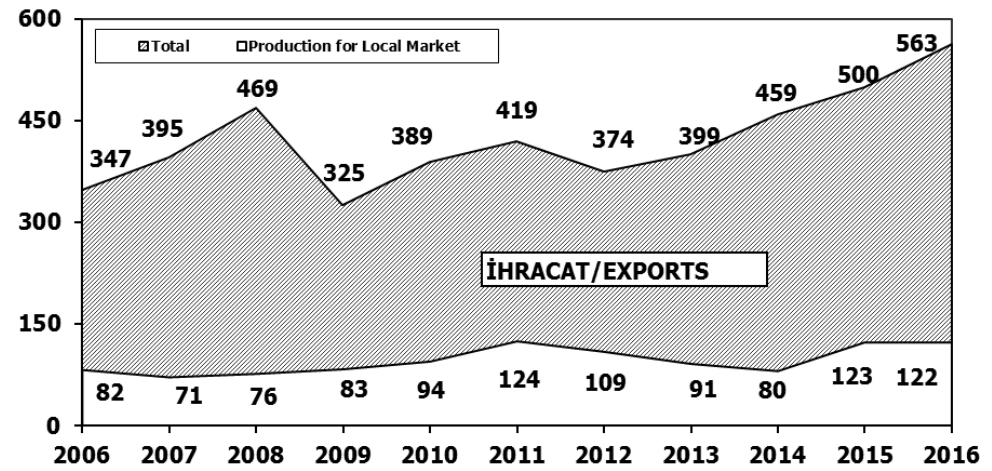
B.KAMYON : AYA 12 Ton'dan Büyük (M.Truck:GVW 12 Ton And Up)

TİPLER	AĞUSTOS AYI ÜRETİMİ August Production		8 AYLIK ÜRETİM 8 Months Production		DEĞİŞİM % Percent Change %	
	2015	2016	2015	2016	AĞUSTOS	8 AY 8 Months
<b>OTOMOBİL - Pass.Car</b>	45.210	52.296	499.652	562.692	16	13
<b>TİCARİ ARAÇLAR - Commercial Vehicles</b>	31.767	25.791	357.645	352.222	-19	-2
* B. KAMYON - M. Truck	2.420	837	20.852	10.097	-65	-52
* K. KAMYON - L. Truck	305	304	2.523	1.543	0	-39
* KAMYONET - Pick Up	24.807	20.977	284.559	306.319	-15	8
* OTOBÜS - Bus	635	627	5.476	5.592	-1	2
* MİNİBÜS - Minibus	3.009	2.606	40.013	26.369	-13	-34
* MİDİBÜS - Midibus	591	440	4.222	2.302	-26	-45
<b>TAŞIT ARAÇLARI TOPLAM - MV Total</b>	<b>76.977</b>	<b>78.087</b>	<b>857.297</b>	<b>914.914</b>	<b>1</b>	<b>7</b>
<b>TRAKTÖR - F.Tractor</b>	<b>4.739</b>	<b>1.581</b>	<b>34.251</b>	<b>35.601</b>	<b>-67</b>	<b>4</b>
<b>GENEL TOPLAM - Grand Total</b>	<b>81.716</b>	<b>79.668</b>	<b>891.548</b>	<b>950.515</b>	<b>-3</b>	<b>7</b>

**Toplam Üretim ve Otomobil Üretimi** (x1000) (Ocak-Ağustos)  
Total & P.Cars Production (x1000) (January-August)

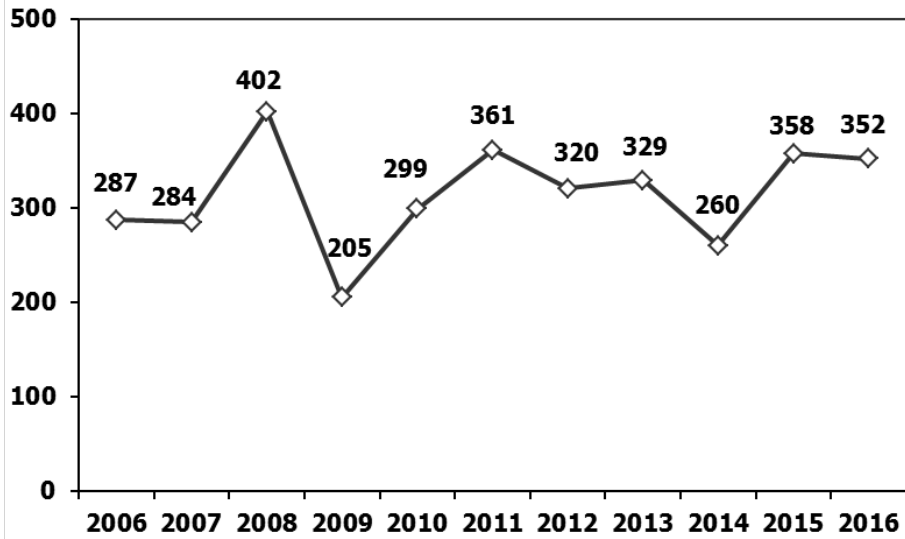


**Otomobil Üretimi ve İhracat** (x1000) (Ocak-Ağustos)  
P.Cars Production & Exports (x1000) (January-August)



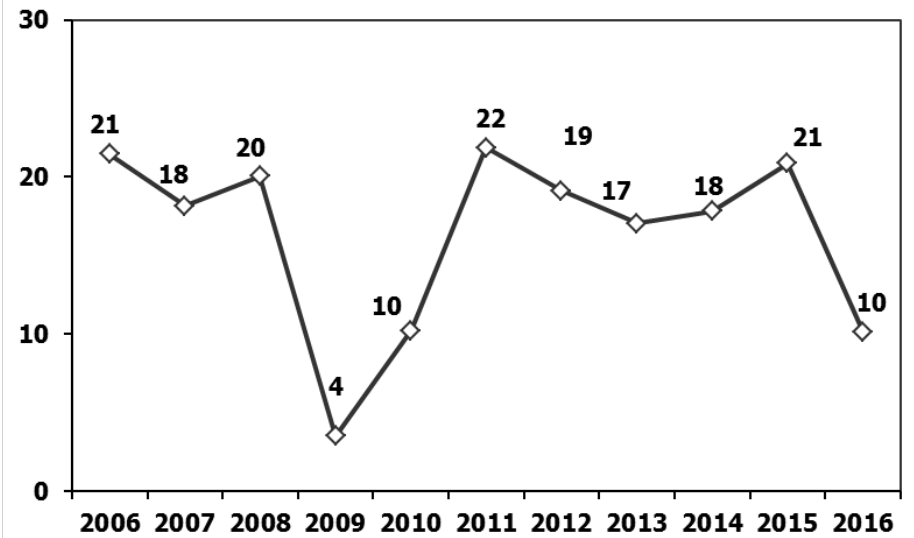
### Ticari Araç Üretimi (x1000) (Ocak-Ağustos)

Commercial Vehicle Production (x1000) (January-August)



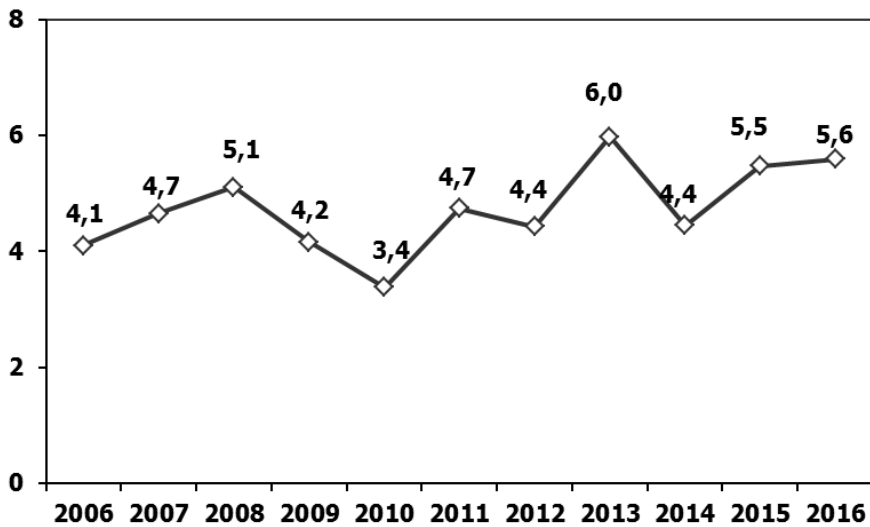
### (AYA >12 Ton) Büyük Kamyon Üretimi (x1000) (Ocak-Ağustos)

(GVW >12 Ton) Heavy Truck Production (x1000) (January-August)



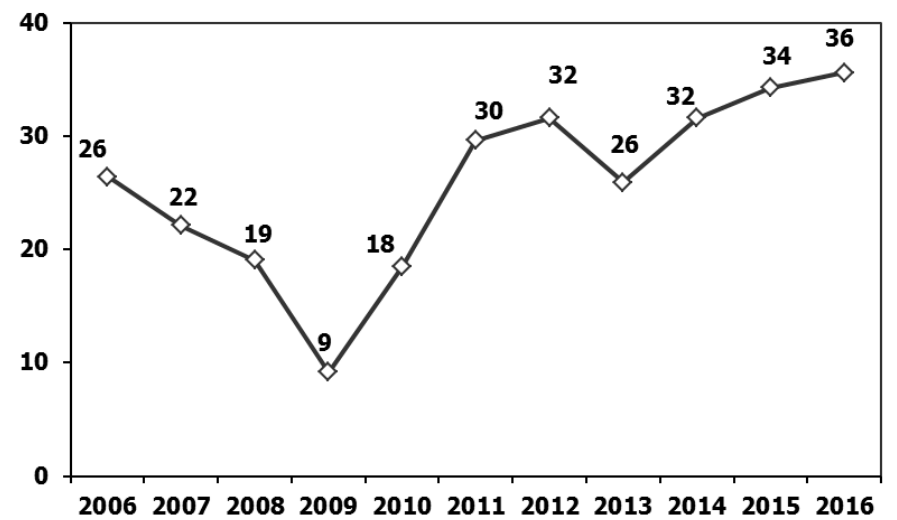
### Otobüs Üretimi (x1000) (Ocak-Ağustos)

Bus Production (x1000) (January-August)



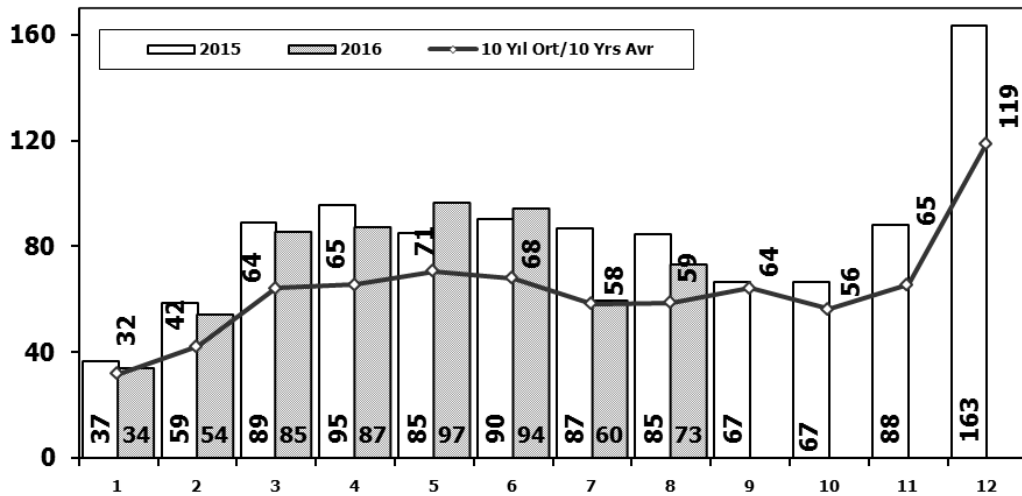
### Traktör Üretimi (x1000) (Ocak-Ağustos)

F. Tractor Production (x1000) (January-August)



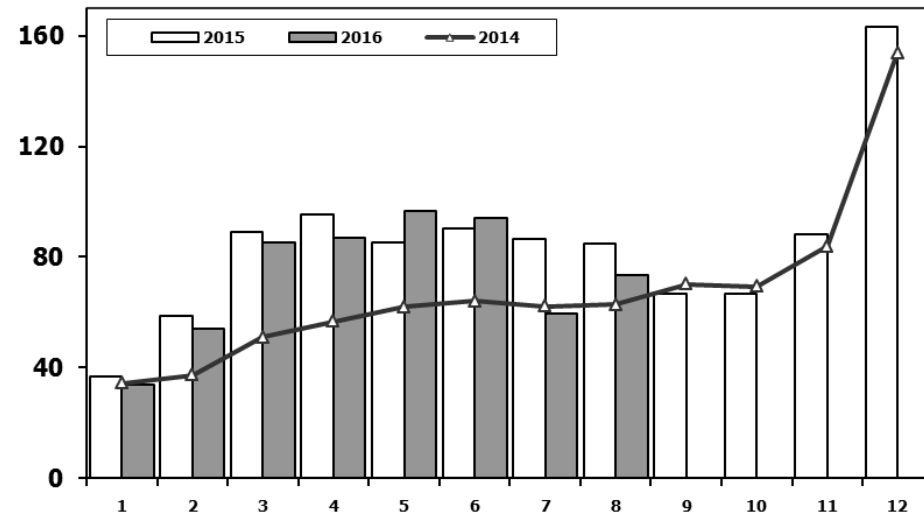
## Toplam Pazarın Analizi (x1000)

Total Market Analysis (x1000)



## Toplam Pazar (x1000)

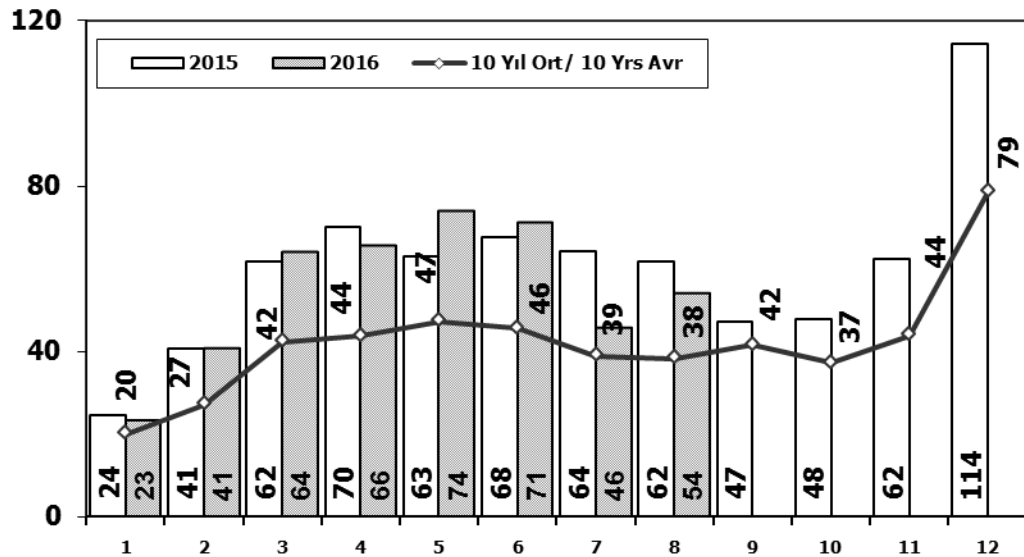
Total Market (x1000)



Aylar / Months	10 Yil Ort. 10 Yrs Avr. (x1000)	2016 (x1000)	%		1	2	3	4	5	6	7	8	9	10	11	12	8 Ay/Mo	Total
				2006	29.969	44.646	65.090	68.853	83.289	58.203	40.037	47.374	49.629	39.805	55.898	82.722	437.461	665.515
				2007	24.950	31.702	45.488	45.633	51.255	51.661	50.117	54.171	50.078	56.058	67.017	106.076	354.977	634.206
1	31,7	33,7	6,4	2008	33.792	38.121	56.814	50.967	51.627	49.393	44.692	46.592	46.829	35.147	28.152	44.418	371.998	526.544
2	42,3	54,2	28,3	2009	20.631	22.846	56.531	54.426	64.887	63.102	30.246	37.092	83.403	22.117	29.202	91.386	349.761	575.869
3	64,3	85,2	32,6	2010	21.050	32.313	53.828	57.079	61.628	63.390	63.718	64.645	66.601	76.780	77.406	154.734	417.651	793.172
4	65,4	87,0	33,0	2011	47.658	62.348	83.333	82.071	85.093	85.863	65.364	61.378	63.643	72.640	67.195	134.281	573.108	910.867
5	70,5	96,6	37,0	2012	31.219	43.827	68.957	66.014	74.820	74.781	65.122	60.848	73.197	62.677	75.045	121.113	485.588	817.620
6	67,9	94,2	38,8	2013	37.140	50.931	72.688	77.015	85.421	77.771	74.726	67.383	71.037	60.399	83.017	135.596	543.075	893.124
7	58,3	59,5	2,1	2014	34.225	37.308	50.964	56.766	61.909	63.952	62.206	62.839	70.180	69.259	83.937	153.941	430.169	807.486
8	58,7	73,3	24,8	2015	36.576	58.533	89.121	95.431	85.145	90.463	86.625	84.683	66.622	66.520	88.043	163.432	626.577	1.011.194
<b>Total</b>	<b>459,0</b>	<b>583,8</b>	<b>27,2</b>	2016	33.740	54.223	85.214	87.041	96.576	94.203	59.505	73.269					583.771	583.771

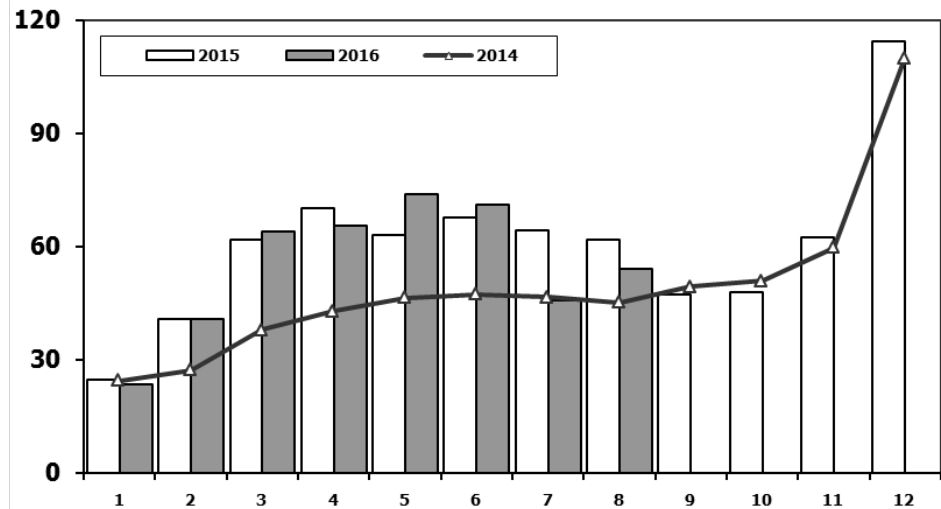
## Otomobil Pazarının Analizi (x1000)

P.Cars Market Analysis (x1000)



## Otomobil Pazarı (x1000)

P.Cars Market (x1000)

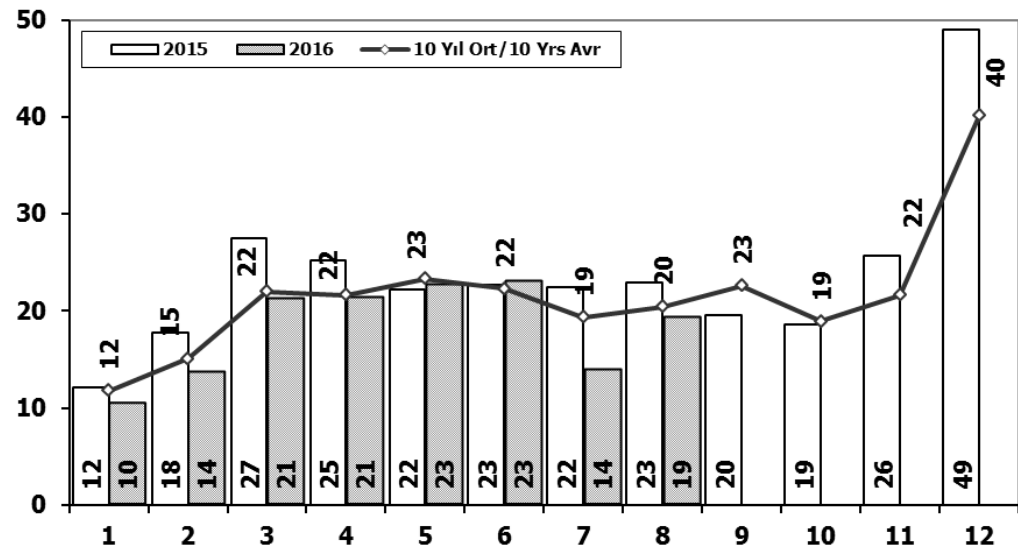


Aylar / Months	10 Yil Ort. 10 Yrs Avr. (x1000)	2016 (x1000)	%
1	20,0	23,4	17,0
2	27,1	40,6	49,5
3	42,3	64,0	51,4
4	43,8	65,6	49,8
5	47,2	73,8	56,4
6	45,6	71,1	56,0
7	38,9	45,6	17,1
8	38,3	54,0	41,0
<b>Total</b>	<b>303,2</b>	<b>438,0</b>	<b>44,5</b>

	1	2	3	4	5	6	7	8	9	10	11	12	8 Ay/Mo	Total
2006	16.506	24.929	36.996	40.177	48.521	32.982	22.653	24.873	27.517	21.237	30.477	46.351	247.637	373.219
2007	13.186	17.212	24.336	25.204	29.067	30.126	28.246	28.469	27.662	32.569	39.643	61.745	195.846	357.465
2008	18.588	21.196	34.147	30.313	31.477	28.724	25.530	26.102	27.053	19.788	17.201	25.879	216.077	305.998
2009	13.173	14.492	40.622	36.202	44.188	41.019	16.637	22.537	52.162	13.828	17.781	57.178	228.870	369.819
2010	12.594	20.651	33.958	36.549	40.467	42.086	41.399	42.222	42.477	47.859	50.061	99.461	269.926	509.784
2011	29.868	39.004	54.023	53.835	56.302	56.714	43.518	38.875	39.964	47.508	44.951	88.957	372.139	593.519
2012	21.077	29.189	47.270	45.645	50.460	50.849	44.531	41.236	49.360	43.440	52.297	80.926	330.257	556.280
2013	25.835	36.814	51.785	56.999	62.383	58.290	55.712	51.611	52.925	46.985	64.117	101.199	399.429	664.655
2014	24.368	27.167	37.812	42.769	46.379	47.278	46.602	45.131	49.262	50.814	59.695	110.054	317.506	587.331
2015	24.498	40.817	61.676	70.211	62.878	67.766	64.218	61.753	47.088	47.954	62.397	114.340	453.817	725.596
2016	23.358	40.588	63.975	65.618	73.832	71.111	45.566	53.977					438.025	438.025

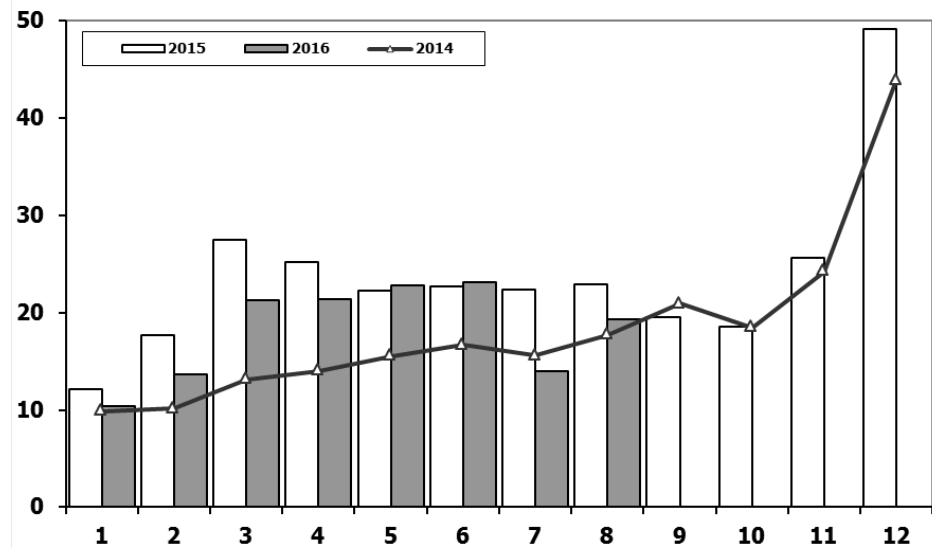
## Ticari Araç Pazarının Analizi (x1000)

CV Market Analysis (x1000)



## Ticari Araç Pazarı (x1000)

CV Total Market (x1000)

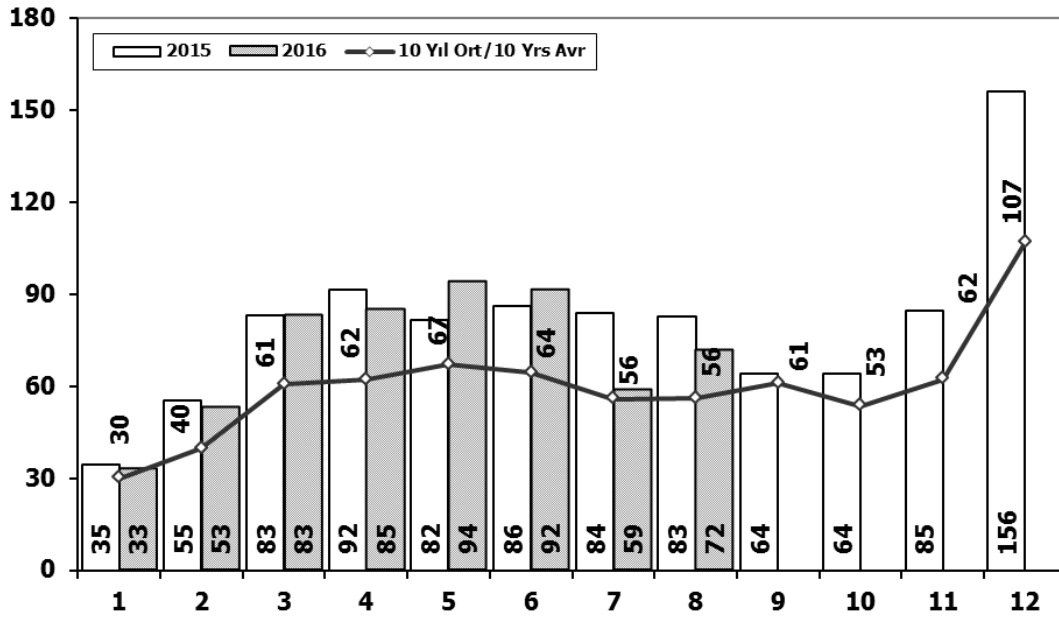


Aylar / Months	10 Yil Ort. / 10 Yrs Avr. (x1000)	2016 (x1000)	%
1	11,8	10,4	-11,7
2	15,1	13,6	-9,8
3	22,0	21,2	-3,5
4	21,6	21,4	-1,0
5	23,3	22,7	-2,4
6	22,3	23,1	3,7
7	19,4	13,9	-28,1
8	20,4	19,3	-5,5
<b>Total</b>	<b>155,9</b>	<b>145,7</b>	<b>-6,5</b>

	1	2	3	4	5	6	7	8	9	10	11	12	8 Ay/Mo	Total
<b>2006</b>	13.463	19.717	28.094	28.676	34.768	25.221	17.384	22.501	22.112	18.568	25.421	36.371	189.824	292.296
<b>2007</b>	11.764	14.490	21.152	20.429	22.188	21.535	21.871	25.702	22.416	23.489	27.374	44.331	159.131	276.741
<b>2008</b>	15.204	16.925	22.667	20.654	20.150	20.669	19.162	20.490	19.776	15.359	10.951	18.539	155.921	220.546
<b>2009</b>	7.458	8.354	15.909	18.224	20.699	22.083	13.609	14.555	31.241	8.289	11.421	34.208	120.891	206.050
<b>2010</b>	8.456	11.662	19.870	20.530	21.161	21.304	22.319	22.423	24.124	28.921	27.345	55.273	147.725	283.388
<b>2011</b>	17.790	23.344	29.310	28.236	28.791	29.149	21.846	22.503	23.679	25.132	22.244	45.324	200.969	317.348
<b>2012</b>	10.142	14.638	21.687	20.369	24.360	23.932	20.591	19.612	23.837	19.237	22.748	40.187	155.331	261.340
<b>2013</b>	11.305	14.117	20.903	20.016	23.038	19.481	19.014	15.772	18.112	13.414	18.900	34.397	143.646	228.469
<b>2014</b>	9.857	10.141	13.152	13.997	15.530	16.674	15.604	17.708	20.918	18.445	24.242	43.887	112.663	220.155
<b>2015</b>	12.078	17.716	27.445	25.220	22.267	22.697	22.407	22.930	19.534	18.566	25.646	49.092	172.760	285.598
<b>2016</b>	10.382	13.635	21.239	21.423	22.744	23.092	13.939	19.292					145.746	145.746

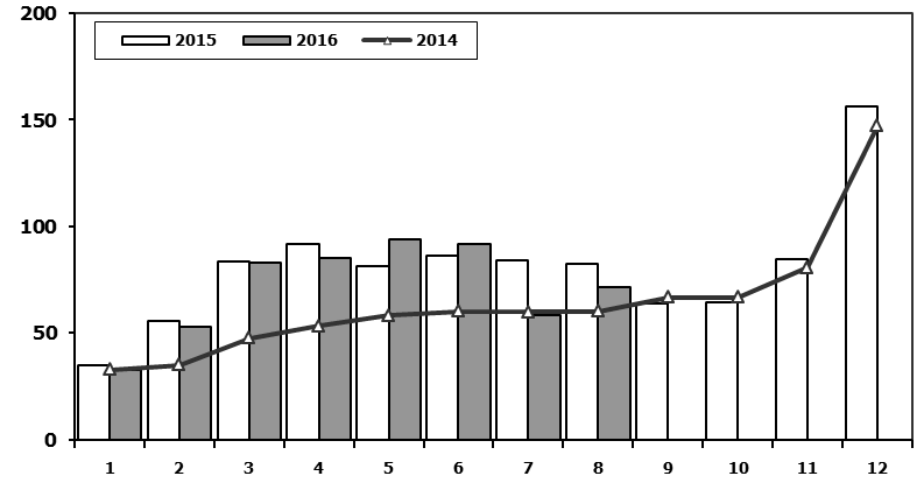
## Hafif Araç Pazarının Analizi (x1000)

### LV Market Analysis (x1000)



## Hafif Araç Pazarı (x1000)

### LV Total Market (x1000)



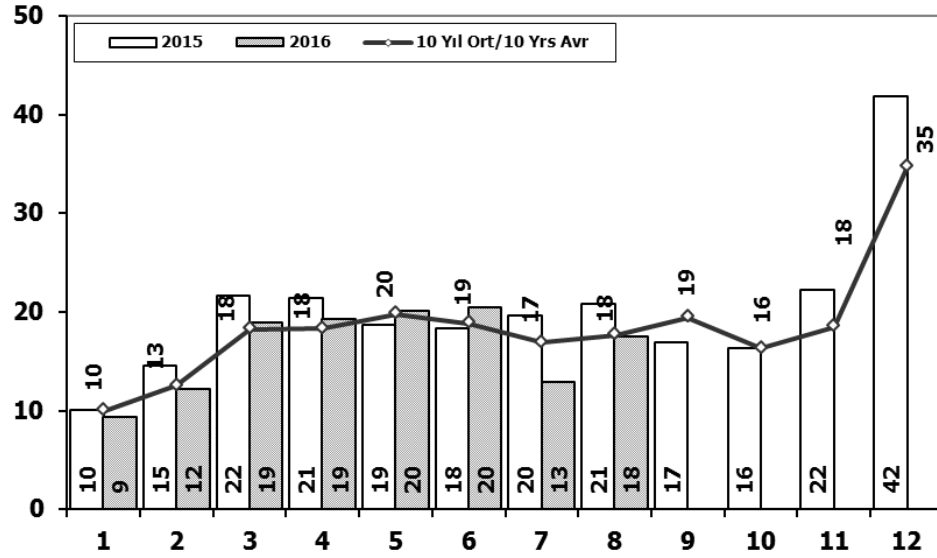
Aylar / Months	10 Yil Ort. 10 Yrs Avr. (x1000)	2016 (x1000)	%
1	30,0	32,7	9,2
2	39,7	52,8	33,1
3	60,5	82,9	37,0
4	62,1	84,9	36,7
5	67,0	93,9	40,2
6	64,4	91,5	42,1
7	55,8	58,5	4,9
8	56,0	71,6	27,8
<b>Total</b>	<b>435,5</b>	<b>568,9</b>	<b>30,6</b>

	1	2	3	4	5	6	7	8	9	10	11	12	8 Ay/Mo	Total
2006	27.917	40.938	60.052	64.038	78.229	54.355	37.251	43.767	46.109	36.542	51.867	76.787	406.547	617.852
2007	23.117	29.184	41.890	42.366	47.938	48.674	47.490	50.558	46.581	52.725	63.313	100.926	331.217	594.762
2008	31.527	35.251	53.649	47.701	48.598	46.324	42.156	43.670	43.932	32.884	26.253	42.078	348.876	494.023
2009	19.606	21.742	55.111	52.640	63.191	61.067	28.845	35.609	81.397	21.033	27.962	88.923	337.811	557.126
2010	20.095	31.172	51.769	54.946	59.377	60.896	61.345	61.764	63.814	73.404	73.962	148.369	401.364	760.913
2011	44.892	58.663	78.403	77.695	80.646	81.573	63.044	58.406	60.129	69.421	63.657	127.910	543.322	864.439
2012	29.545	41.324	64.884	62.949	70.863	71.067	62.304	58.148	69.629	59.938	71.710	115.400	461.084	777.761
2013	35.523	48.307	68.774	73.575	81.468	74.096	71.596	65.043	67.963	58.014	79.301	129.718	518.382	853.378
2014	32.670	35.021	47.581	53.305	58.121	60.163	59.907	60.199	66.531	66.573	80.621	146.989	406.967	767.681
2015	34.615	55.331	83.302	91.602	81.542	86.158	83.836	82.577	64.025	64.255	84.601	156.173	598.963	968.017
2016	32.713	52.825	82.948	84.887	93.904	91.540	58.533	71.556					568.906	568.906



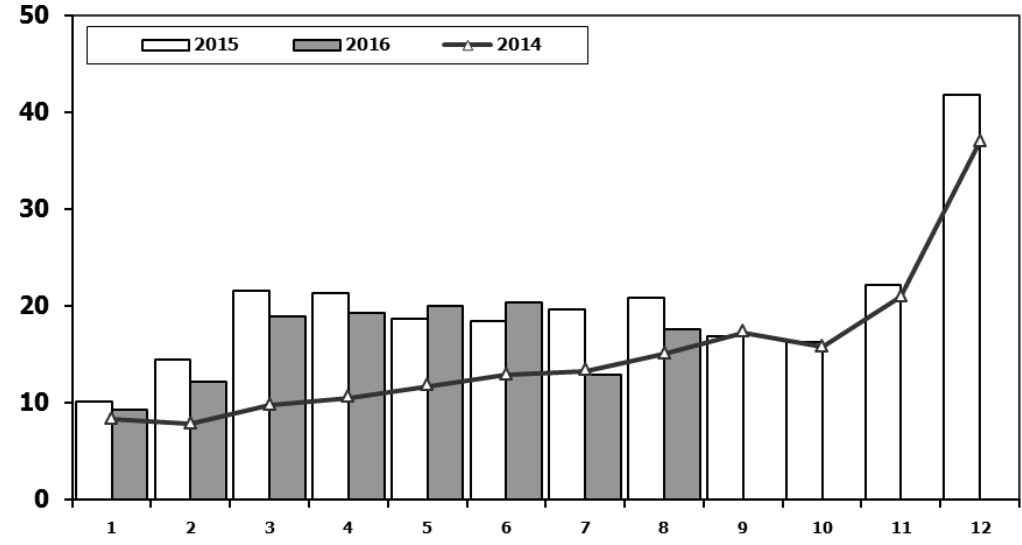
## Hafif Ticari Araç Pazarının Analizi (x1000)

LCV Market Analysis (x1000)



## Hafif Ticari Araç Pazarı (x1000)

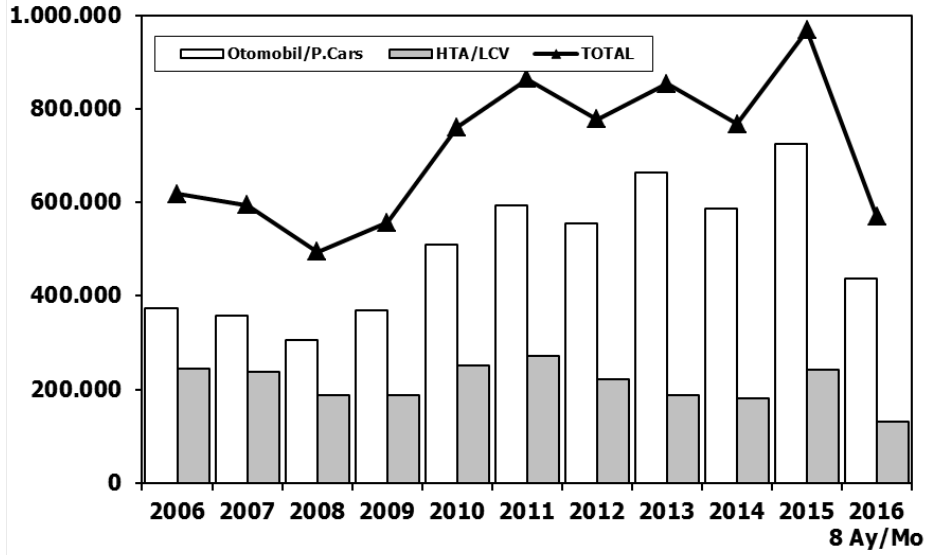
LCV Total Market (x1000)



Aylar / Months	10 Yil Ort. 10 Yrs Avr. (x1000)	2016 (x1000)	%	1	2	3	4	5	6	7	8	9	10	11	12	8 Ay/Mo	Total
	10,0	9,4	-6,3	11.411	16.009	23.056	23.861	29.708	21.373	14.598	18.894	18.592	15.305	21.390	30.436	158.910	244.633
1	10,0	9,4	-6,3	9.931	11.972	17.554	17.162	18.871	18.548	19.244	22.089	18.919	20.156	23.670	39.181	135.371	237.297
2	12,5	12,2	-2,5	12.939	14.055	19.502	17.388	17.121	17.600	16.626	17.568	16.879	13.096	9.052	16.199	132.799	188.025
3	18,3	19,0	3,8	6.433	7.250	14.489	16.438	19.003	20.048	12.208	13.072	29.235	7.205	10.181	31.745	108.941	187.307
4	18,3	19,3	5,3	7.501	10.521	17.811	18.397	18.910	18.810	19.946	19.542	21.337	25.545	23.901	48.908	131.438	251.129
5	19,8	20,1	1,5	15.024	19.659	24.380	23.860	24.344	24.859	19.526	19.531	20.165	21.913	18.706	38.953	171.183	270.920
6	18,9	20,4	8,4	8.468	12.135	17.614	17.304	20.403	20.218	17.773	16.912	20.269	16.498	19.413	34.474	130.827	221.481
7	16,9	13,0	-23,1	9.688	11.493	16.989	16.576	19.085	15.806	15.884	13.432	15.038	11.029	15.184	28.519	118.953	188.723
8	17,7	17,6	-0,6	8.302	7.854	9.769	10.536	11.742	12.885	13.305	15.068	17.269	15.759	20.926	36.935	89.461	180.350
Total	132,3	130,9	-1,1	10.117	14.514	21.626	21.391	18.664	18.392	19.618	20.824	16.937	16.301	22.204	41.833	145.146	242.421
				9.355	12.237	18.973	19.269	20.072	20.429	12.967	17.579					130.881	130.881

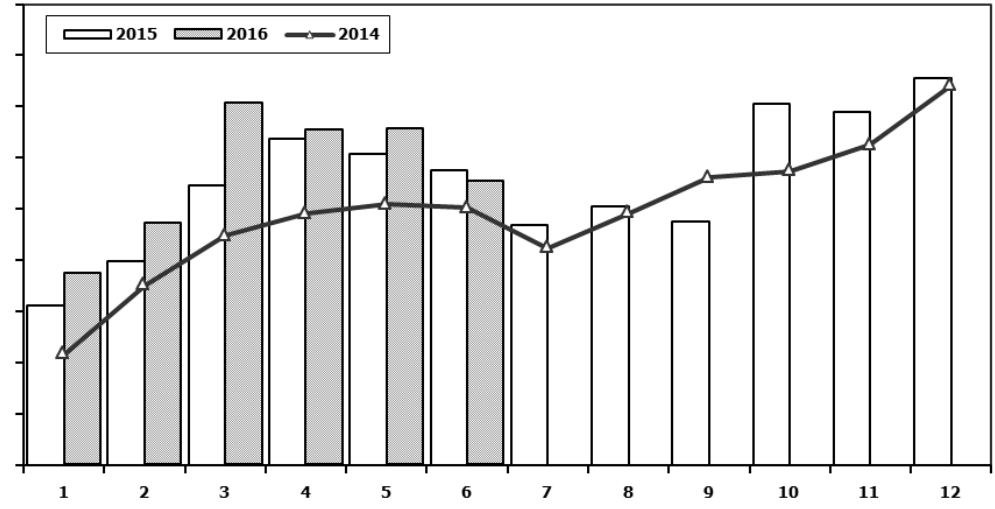
## Hafif Araç Pazarı (AYA < 3.5 Ton)

Light Vehicle Market (GVW < 3.5 Ton)



## Traktör Pazarı (x1000)

F. Tractor Market (x1000)

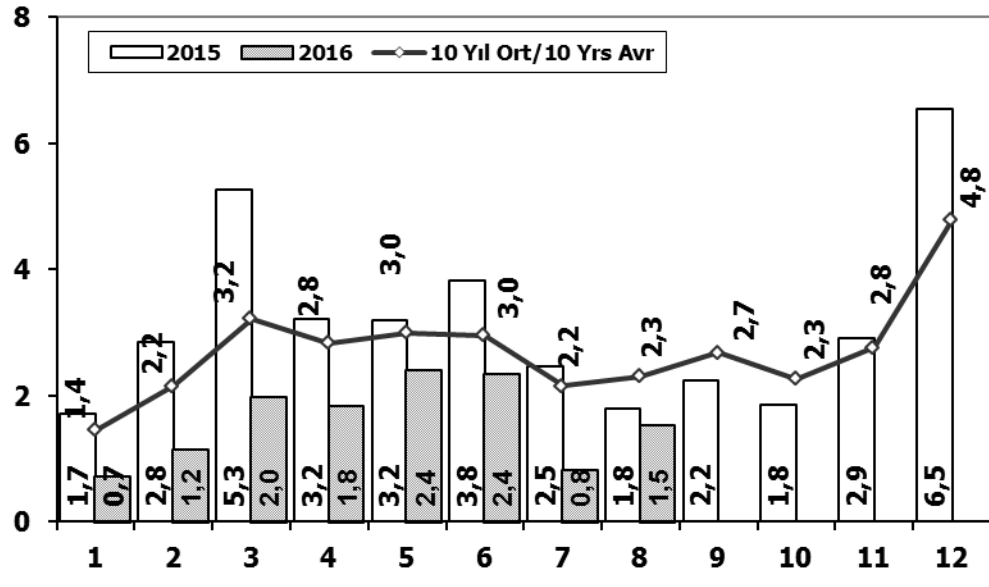


	1	2	3	4	5	6	7	8	9	10	11	12	6 Ay/Mo	Total
2006	4.018	2.139	3.201	3.599	5.529	3.401	2.450	2.608	2.820	2.872	3.697	3.373	21.887	39.707
2007	2.816	2.244	3.053	2.657	3.188	3.141	2.497	2.381	3.025	2.755	3.549	3.097	17.099	34.403
2008	2.770	1.855	3.395	3.081	2.769	2.400	2.232	2.485	1.856	1.773	1.305	1.101	16.270	27.022
2009	717	572	688	1.070	1.297	1.256	1.054	1.183	1.117	1.356	1.304	2.144	5.600	13.758
2010	1.111	1.991	2.330	3.039	2.567	2.638	1.965	3.019	2.806	4.424	3.978	6.168	13.676	36.036
2011	2.975	5.242	5.927	5.358	6.016	6.335	4.534	4.051	4.140	5.828	4.943	4.992	31.853	60.341
2012	2.362	1.983	4.348	6.579	6.273	4.569	3.837	3.158	3.618	4.027	4.807	4.757	26.114	50.318
2013	2.161	2.432	4.005	4.585	5.616	3.136	4.574	3.408	4.935	4.762	5.781	6.891	21.935	52.286
2014	2.169	3.512	4.476	4.905	5.094	5.028	4.233	4.920	5.619	5.743	6.250	7.409	25.184	59.358
2015	3.124	3.984	5.460	6.383	6.078	5.748	4.677	5.044	4.765	7.049	6.898	7.564	30.777	66.774
2016	3.739	4.731	7.067	6.546	6.575	5.543							34.201	34.201

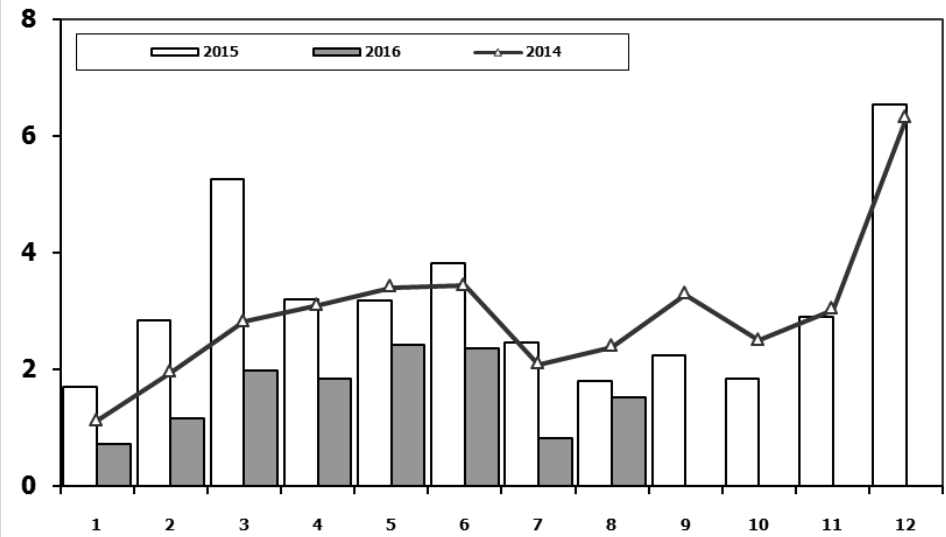
Kaynak: TÜİK trafik kayıtları.

Rakamlar, son iki model yılına ait traktör tescillerinden oluşmaktadır.

## Kamyon Pazarının Analizi (x1000) AYA > 5 Ton Truck Market Analysis (x1000) GVW > 5 Ton



## Kamyon Pazarı (x1000) AYA > 5 Ton Truck Market (x1000) GVW > 5 Ton

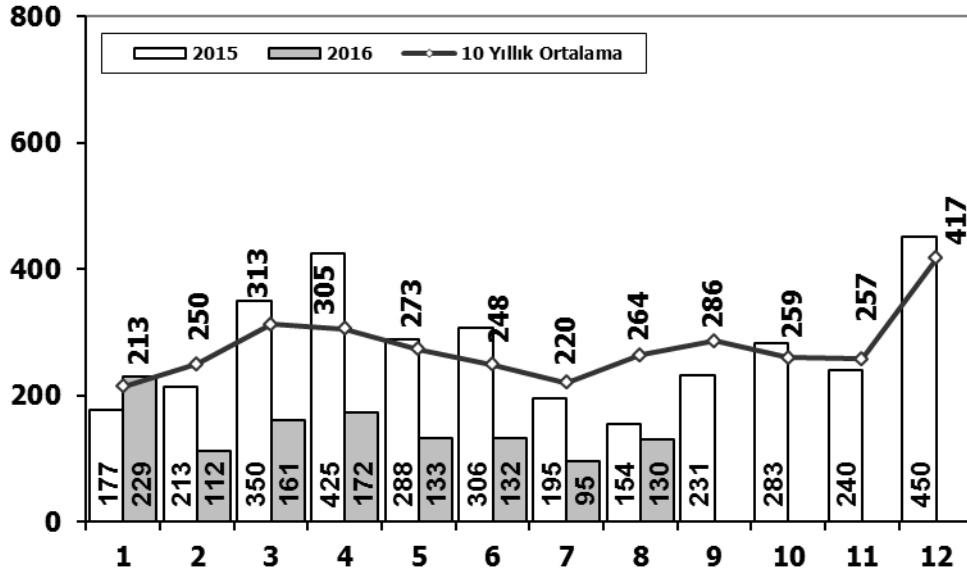


Aylar / Months	10 Yil Ort. 10 Yrs Avr. (x1000)	2016 (x1000)	%
1	1,4	0,7	-50,5
2	2,2	1,2	-46,5
3	3,2	2,0	-38,4
4	2,8	1,8	-35,2
5	3,0	2,4	-19,2
6	3,0	2,4	-20,4
7	2,2	0,8	-61,5
8	2,3	1,5	-33,8
<b>Total</b>	<b>20,1</b>	<b>12,8</b>	<b>-36,1</b>

	1	2	3	4	5	6	7	8	9	10	11	12	8 Ay/Mo	Total
2006	1.767	3.310	4.467	4.180	4.449	3.398	2.472	3.142	3.052	2.926	3.550	5.358	27.185	42.071
2007	1.554	2.055	3.065	2.940	2.865	2.613	2.372	3.145	2.988	2.886	3.258	4.444	20.609	34.185
2008	1.797	2.309	2.621	2.578	2.459	2.526	2.067	2.377	2.390	1.790	1.512	1.834	18.734	26.260
2009	771	759	1.034	1.342	1.355	1.651	1.156	1.205	1.780	866	981	2.015	9.273	14.915
2010	777	968	1.772	1.807	1.966	2.205	2.093	2.446	2.444	3.071	3.136	5.677	14.034	28.362
2011	2.552	3.292	4.418	3.754	3.803	3.749	1.996	2.478	3.081	2.774	3.108	5.787	26.042	40.792
2012	1.375	2.159	3.595	2.697	3.321	3.250	2.450	2.277	2.991	2.244	3.006	5.000	21.124	34.365
2013	1.077	1.931	3.127	2.720	3.145	2.951	2.411	1.845	2.554	1.801	3.173	5.025	19.207	31.760
2014	1.117	1.949	2.818	3.092	3.405	3.438	2.083	2.390	3.281	2.494	3.028	6.313	20.292	35.408
2015	1.705	2.841	5.270	3.208	3.190	3.824	2.463	1.798	2.244	1.848	2.902	6.540	24.299	37.833
2016	718	1.154	1.984	1.835	2.420	2.358	830	1.529					12.828	12.828

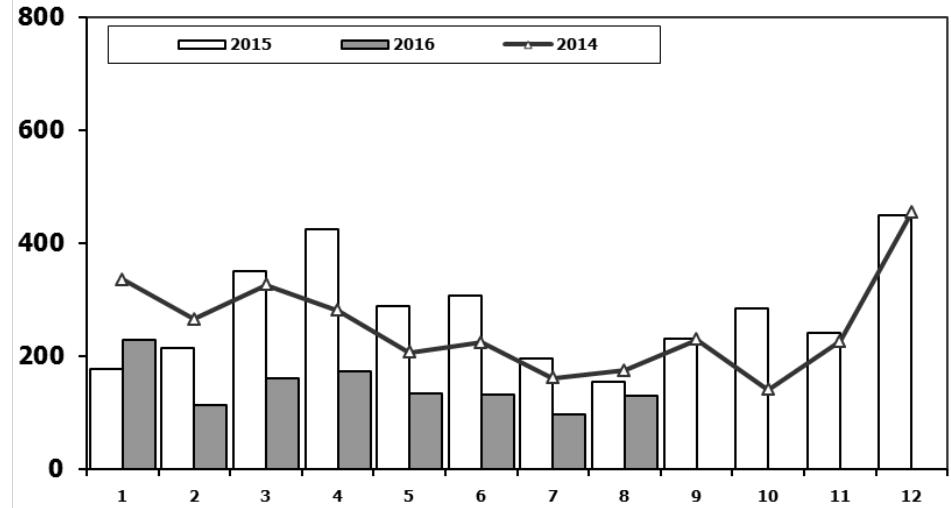
## Midibüs Pazarının Analizi (7-9 mt / 25-35 Kişilik)

### Midibus Market Analysis (7-9 mt / 25-35 Passengers)



## Midibüs Pazarı (7-9 mt / 25-35 Kişilik Midibüs)

### Midibus Market (7-9 mt / 25-35 Passengers)

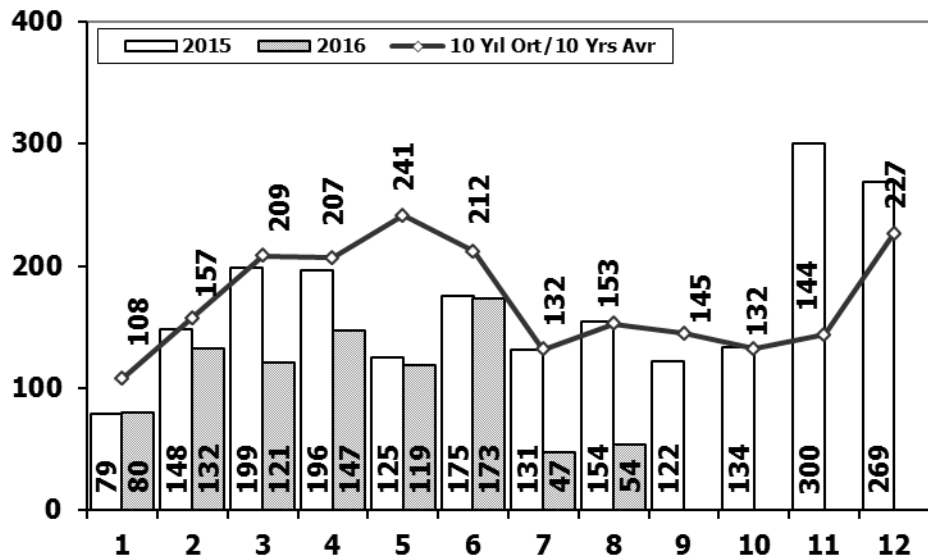


Aylar / Months	10 Yıl Ort. 10 Yrs Avr.	2016	%
1	213	229	7
2	250	112	-55
3	313	161	-49
4	305	172	-44
5	273	133	-51
6	248	132	-47
7	220	95	-57
8	264	130	-51
<b>Total</b>	<b>2.086</b>	<b>1.164</b>	<b>-44</b>

	1	2	3	4	5	6	7	8	9	10	11	12	8 Ay/Mo	Total
2006	207	297	406	388	381	266	230	353	322	253	305	401	2.528	3.809
2007	207	272	404	238	302	283	164	365	399	279	283	465	2.235	3.661
2008	391	476	436	512	419	331	368	380	341	352	246	270	3.313	4.522
2009	154	124	160	220	174	198	160	175	168	143	206	323	1.365	2.205
2010	155	131	185	167	140	138	129	246	236	206	202	437	1.291	2.372
2011	138	195	294	316	280	258	211	305	301	276	260	270	1.997	3.104
2012	179	257	277	229	257	239	216	249	325	269	189	398	1.903	3.084
2013	191	268	289	276	283	241	367	235	305	392	415	697	2.150	3.959
2014	335	265	326	280	206	223	161	174	229	140	226	454	1.970	3.019
2015	177	213	350	425	288	306	195	154	231	283	240	450	2.108	3.312
2016	229	112	161	172	133	132	95	130					1.164	1.164

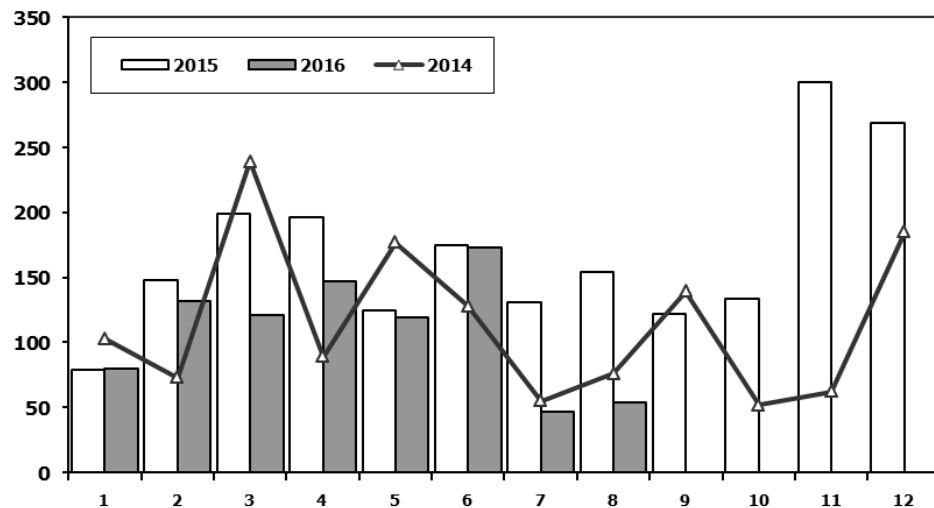
## Otobüs Pazarının Analizi

Bus Market Analysis



## Otobüs Pazarı

Bus Market

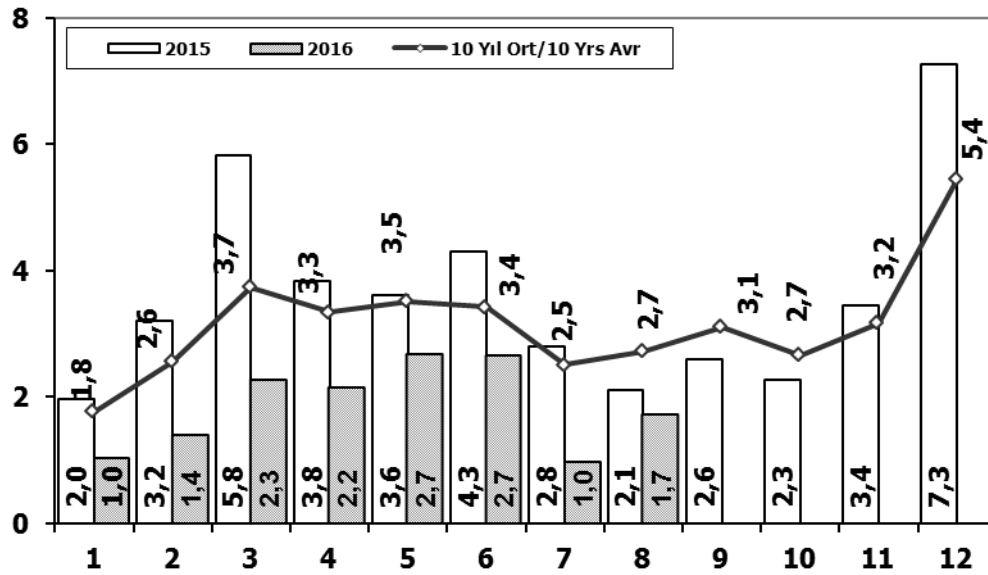


Aylar / Months	10 Yil Ort. 10 Yrs Avr.	2016	%
1	108	80	-26
2	157	132	-16
3	209	121	-42
4	207	147	-29
5	241	119	-51
6	212	173	-18
7	132	47	-64
8	153	54	-65
<b>Total</b>	<b>1.417</b>	<b>873</b>	<b>-38</b>

	1	2	3	4	5	6	7	8	9	10	11	12	8 Ay/Mo	Total
2006	78	101	165	247	230	184	84	112	146	84	176	176	1.201	1.783
2007	72	191	129	89	150	91	91	103	110	168	163	241	916	1.598
2008	77	85	108	176	151	212	101	165	166	121	141	236	1.075	1.739
2009	100	221	226	224	167	186	85	103	58	75	53	125	1.312	1.623
2010	23	42	102	159	145	151	151	189	107	99	106	251	962	1.525
2011	76	198	218	306	364	283	113	189	132	169	170	314	1.747	2.532
2012	120	87	201	139	379	225	152	174	252	226	140	315	1.477	2.410
2013	349	425	498	444	525	483	352	260	215	192	128	156	3.336	4.027
2014	103	73	239	89	177	128	55	76	139	52	62	185	940	1.378
2015	79	148	199	196	125	175	131	154	122	134	300	269	1.207	2.032
2016	80	132	121	147	119	173	47	54					873	873

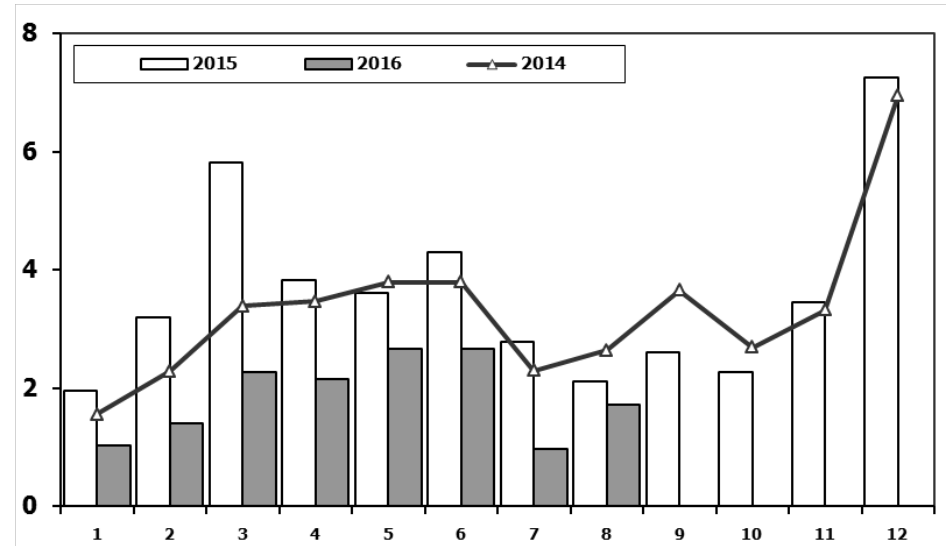
## Ağır Ticari Araç Pazarının Analizi (x1000)

HCV Market Analysis (x1000)



## Ağır Ticari Araç Pazarı (x1000)

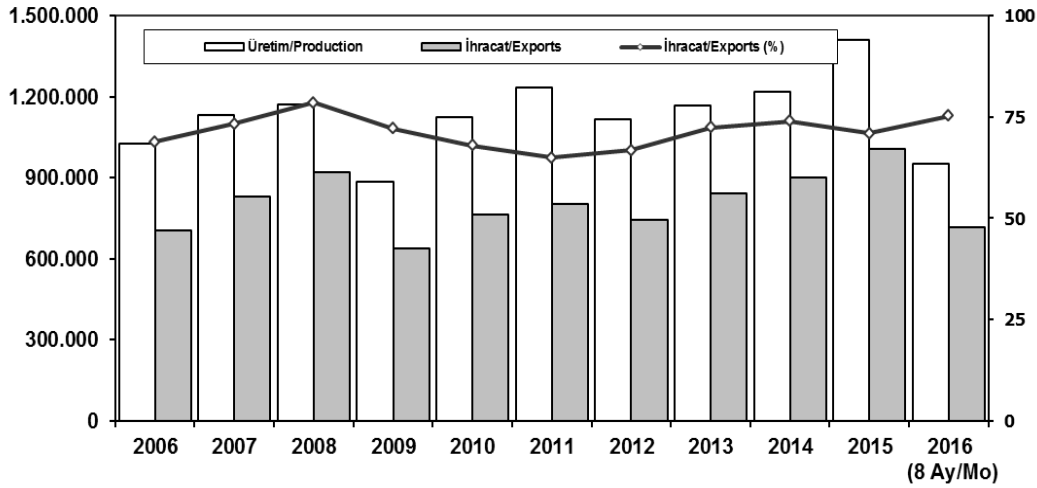
HCV Market (x1000)



Aylar / Months	10 Yıl Ort. 10 Yrs Avr. (x1000)	2016 (x1000)	%		1	2	3	4	5	6	7	8	9	10	11	12	8 Ay/Mo	Total
				2006	2.052	3.708	5.038	4.815	5.060	3.848	2.786	3.607	3.520	3.263	4.031	5.935	30.914	47.663
				2007	1.833	2.518	3.598	3.267	3.317	2.987	2.627	3.613	3.497	3.333	3.704	5.150	23.760	39.444
1	1,8	1,0	-42,0	2008	2.265	2.870	3.165	3.266	3.029	3.069	2.536	2.922	2.897	2.263	1.899	2.340	23.122	32.521
2	2,6	1,4	-45,5	2009	1.025	1.104	1.420	1.786	1.696	2.035	1.401	1.483	2.006	1.084	1.240	2.463	11.950	18.743
3	3,7	2,3	-39,4	2010	955	1.141	2.059	2.133	2.251	2.494	2.373	2.881	2.787	3.376	3.444	6.365	16.287	32.259
4	3,3	2,2	-35,6	2011	2.766	3.685	4.930	4.376	4.447	4.290	2.320	2.972	3.514	3.219	3.538	6.371	29.786	46.428
5	3,5	2,7	-23,9	2012	1.674	2.503	4.073	3.065	3.957	3.714	2.818	2.700	3.568	2.739	3.335	5.713	24.504	39.859
6	3,4	2,7	-22,1	2013	1.617	2.624	3.914	3.440	3.953	3.675	3.130	2.340	3.074	2.385	3.716	5.878	24.693	39.746
7	2,5	1,0	-61,2	2014	1.555	2.287	3.383	3.461	3.788	3.789	2.299	2.640	3.649	2.686	3.316	6.952	23.202	39.805
8	2,7	1,7	-37,2	2015	1.961	3.202	5.819	3.829	3.603	4.305	2.789	2.106	2.597	2.265	3.442	7.259	27.614	43.177
Total	23,6	14,9	-37,0	2016	1.027	1.398	2.266	2.154	2.672	2.663	972	1.713					14.865	14.865

## İhracat/Üretim (2006-2016) (Traktör dahil)

Exports/Production (2006-2016) (Including F. Tractor)



	2006	2007	2008	2009	2010	2011	2012	2013	2014	2015	2016 (8 Ay/Mo)
Üretim/Production	1.026.427	1.132.951	1.171.917	884.466	1.124.982	1.234.637	1.115.233	1.166.043	1.218.848	1.410.034	950.515
İhracat/Exports	706.402	829.879	920.763	637.855	763.670	801.112	745.354	843.467	902.194	1.007.267	714.855
İhracat/Exports (%)	69	73	79	72	68	65	67	72	74	71	75

## Taşıt Araçları İhracatı (2014-2016)

Motor Vehicle Exports (2014-2016)

SEKTÖR/SECTOR	2014	2015	2015		2016	2016/2015 (%)
			8 Ay-8 Mo			
OTOMOBİL/ P.Cars	581.993	604.683	376.970	440.197	17	
TİCARİ ARAÇLAR / CV	303.187	387.652	239.955	265.153	11	
* Kamyonet/Pick-Up	269.995	341.834	205.229	237.024	15	
* Minibüs/Minibus	26.458	38.255	30.137	19.837	-34	
* Kamyon/Truck	1.281	1.408	771	3.393	340	
* Midibüs/Midibus	824	447	248	619	150	
* Otobüs/Bus	4.629	5.708	3.570	4.280	20	
<b>TAŞIT ARAÇLARI / MV TOTAL</b>	<b>885.180</b>	<b>992.335</b>	<b>616.925</b>	<b>705.350</b>	<b>14</b>	
<b>TRAKTÖR/F.TRACTOR</b>	<b>17.014</b>	<b>14.932</b>	<b>9.536</b>	<b>9.505</b>	<b>0</b>	
<b>TOTAL</b>	<b>902.194</b>	<b>1.007.267</b>	<b>626.461</b>	<b>714.855</b>	<b>14</b>	

## Otomotiv Ana ve Yan Sanayii İhracatı (ABD \$)

CBU and CKD Exports - \$

Sektör / Sector	2012	2013	2014	2015	2015		2016	2016/2015 (%)
					Ocak-Ağustos / January-August			
<b>Toplam Yan Sanayi/Total Component Industry</b>	<b>8.215.636.677</b>	<b>9.065.017.539</b>	<b>9.504.013.791</b>	<b>8.643.538.318</b>	<b>5.695.264.511</b>	<b>5.959.841.416</b>	<b>5%</b>	
İç ve Dış Lastik / Tyres	1.199.566.307,01	1.130.005.891,78	1.126.709.610,14	961.494.045	652.318.497	654.458.173	0%	
Emniyet Camı / Safety Glasses	120.615.917,59	135.230.309,67	143.208.298,99	124.569.031	81.964.241	80.457.725	-2%	
Motor (Engine)	272.085.582,31	319.294.885,46	171.893.752,32	221.897.271	114.723.818	232.895.473	103%	
Akümülatör / Batteries	249.831.846,25	306.451.449,47	289.101.198,21	220.618.374	135.436.923	127.215.053	-6%	
Diğer Aksam ve Parça / Spare Parts&Components	6.373.537.023,45	7.174.035.002,35	7.773.100.931,83	7.114.959.599	4.710.821.033	4.864.814.992	3%	
<b>Toplam Ana Sanayi/Total Vehicle Industry</b>	<b>11.100.115.134</b>	<b>12.491.591.365</b>	<b>13.259.499.977</b>	<b>12.975.346.180</b>	<b>8.095.345.666</b>	<b>9.425.180.755</b>	<b>16%</b>	
Otobüs / Bus	855.424.303,62	937.790.962,87	985.983.007,01	1.024.134.143	633.812.641	803.280.509	27%	
Midibüs-Minibüs / Minibus- Minibus	161.806.275,12	147.769.644,17	97.685.509,12	130.195.838	89.574.493	143.889.447	61%	
Otomobil (P. Cars)	6.068.045.119,19	6.855.475.589,83	7.258.361.005,24	6.881.972.133	4.409.619.682	4.763.252.442	8%	
Kamyon-Kamyonet/HCV-LCV	3.433.310.998,81	3.918.798.755,31	4.201.760.813,55	4.263.767.944	2.552.790.888	3.082.322.568	21%	
Römork ve Yarı Römork/Trailer-Semi Trailer	195.093.508,21	218.385.731,69	252.354.014,20	252.432.565	152.601.933	200.602.225	31%	
Çekici/Truck-Tractor	71.336.634,88	77.907.406,95	38.396.524,81	48.108.959	30.765.119	207.044.643	573%	
Tarım Traktörü/Farm Tractor	315.098.293,75	335.463.274,61	424.959.103,39	374.734.597	226.180.910	224.788.920	-1%	
<b>Toplam/Total</b>	<b>19.315.751.810</b>	<b>21.556.608.904</b>	<b>22.763.513.769</b>	<b>21.618.884.498</b>	<b>13.790.610.177</b>	<b>15.385.022.170</b>	<b>12%</b>	

Kaynak: Uludağ İhracatçı Birlikleri . ÜİB tarafından OSD için özel olarak analiz edilen Otomotiv İhracatı kapsamında; ÜİB Türkiye Genel Otomotiv Endüstrisi sınıflandırmasına kıyasla "Römork ve Yarı Römork", "Tarım Traktörü" verileri dahil edilmekte; "Kullanılmış Araçlar", "İki Tekerlekli Taşıtlar", "Demiryolu Taşıtları" hariç tutulmaktadır.

## Firma Bazında İhracat (Adet)

Export Of Member Companies (Unit)

FİRMALAR Companies	2014	2015	Ocak-Ağustos January-August	
			2015	2016
OYAK RENAULT	257.992	270.299	166.178	172.346
FORD OTOSAN	187.921	252.571	154.542	169.837
TOFAŞ	142.234	173.743	109.720	169.792
HYUNDAI ASSAN	179.793	201.276	127.333	134.890
TOYOTA	109.517	81.962	51.509	47.223
TÜRK TRAKTÖR	15.866	14.122	9.073	8.841
M. BENZ TÜRK	3.438	4.252	2.715	5.474
KARSAN	37	3.067	1.553	2.026
HONDA TÜRKİYE	1.560	2.220	1.622	1.258
MAN TÜRKİYE	937	1.493	998	1.130
HATTAT TARIM	1.148	810	463	664
OTOKAR	580	720	438	517
TEMSA GLOBAL	423	441	184	449
A.I.O.S.	748	291	133	408
<b>GENEL TOPLAM</b>	<b>902.194</b>	<b>1.007.267</b>	<b>626.461</b>	<b>714.855</b>

Kaynak: OSD

## Sektör Bazında İhracat (1000 \$)

Exports on Sectorial Basis

SEKTÖRLER	AĞUSTOS				OCAK-AĞUSTOS			
	2015	2016	Değişim (16/15)	Pay(16)	2015	2016	Değişim (16/15)	Pay(16)
Otomotiv Endüstrisi	1.361.396	1.679.795	23%	15%	13.490.944	15.140.744	12%	18%
Hazırgiyim ve Konfeksiyon	1.541.343	1.612.482	5%	14%	11.187.326	11.581.373	4%	14%
Kimyevi Maddeler ve Mamulleri	1.185.557	1.207.352	2%	11%	10.446.618	9.172.037	-12%	11%
Elektrik Elektronik ve Hizmet	830.815	862.423	4%	8%	6.716.860	6.438.680	-4%	8%
Çelik	793.980	885.267	11%	8%	6.931.854	5.945.814	-14%	7%
Tekstil ve Hammaddeleri	639.215	662.479	4%	6%	5.259.219	5.185.159	-1%	6%
Hububat, Bakliyat, Yağlı Tohumlar ve Mamulleri	459.882	544.356	18%	5%	3.951.786	4.103.154	4%	5%
Demir ve Demir Dışı Metaller	514.661	518.675	1%	5%	4.169.076	3.948.120	-5%	5%
Makine ve Aksamları	434.256	451.204	4%	4%	3.639.369	3.511.044	-4%	4%
Mobilya, Kağıt ve Orman Ürünleri	345.593	367.066	6%	3%	2.706.546	2.711.713	0%	3%
<b>TOPLAM</b>	<b>10.441.271</b>	<b>11.157.251</b>	<b>7%</b>	<b>100%</b>	<b>87.833.339</b>	<b>85.320.834</b>	<b>-3%</b>	<b>100%</b>

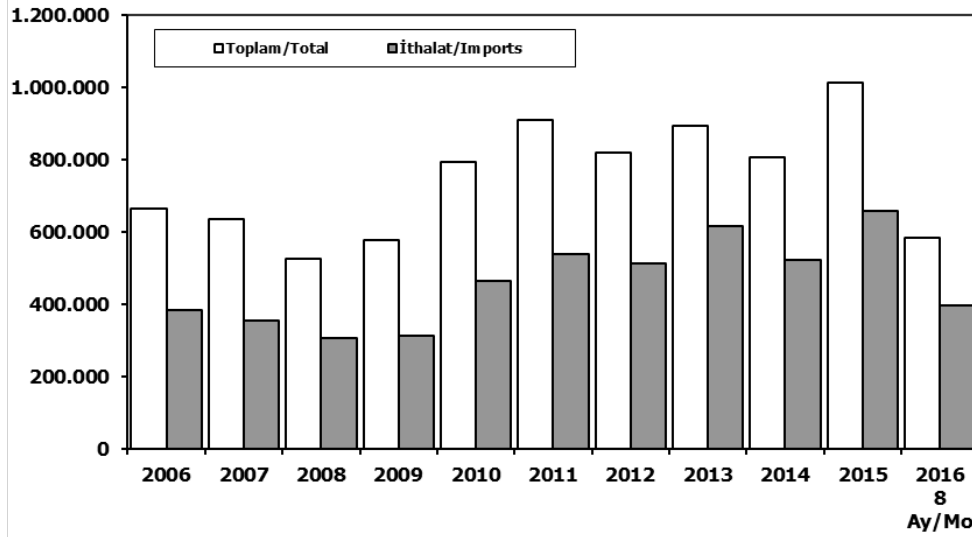
Kaynak: TİM

### First 3 Sectors:

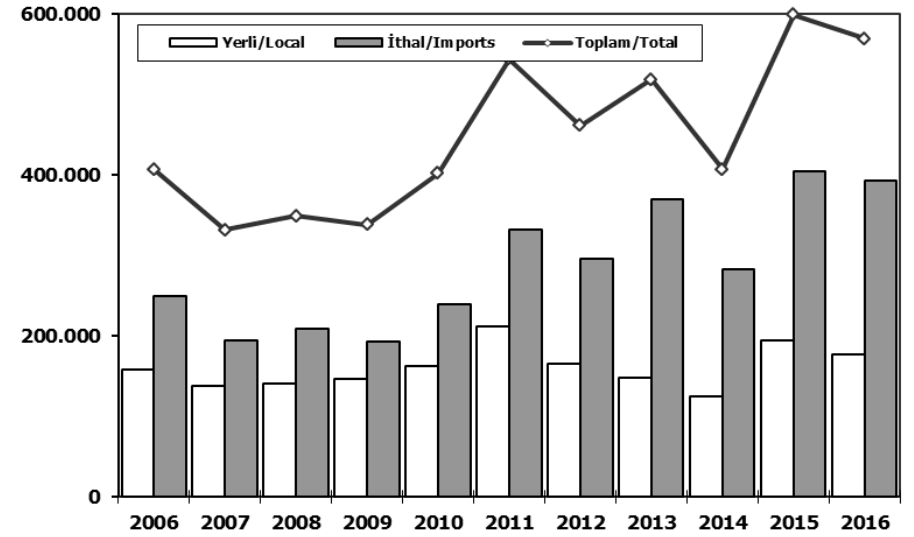
- 1- Automotive Industry
- 2- Ready Wear and Confection
- 3-Chemical Articles and Products



## Toplam Pazar (Otomobil+T.Araç) Total Market (P.Cars+C.V)



## Hafif Araçlar Pazarı (2006-2016 Ocak-Ağustos) LV Market (2006-2016 January-August)

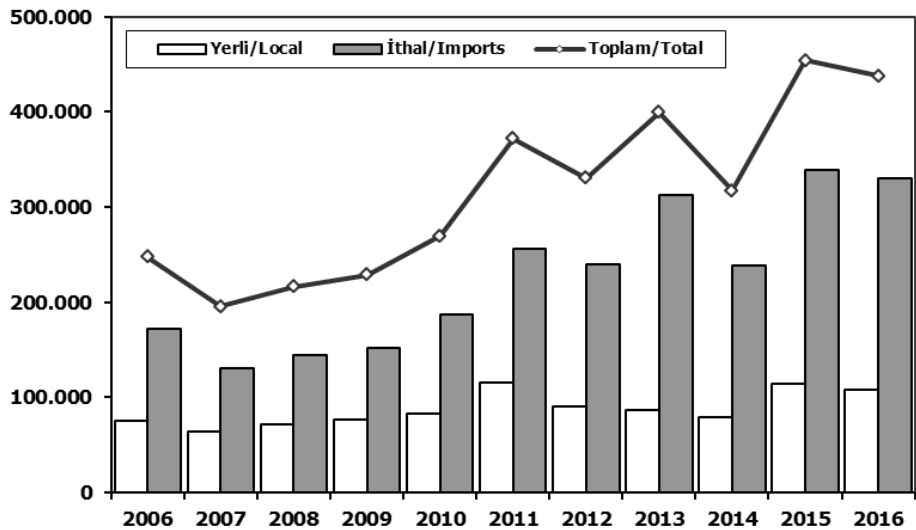


	2006	2007	2008	2009	2010	2011	2012	2013	2014	2015	2015 8 Ay/Mo	2016 8 Ay/Mo
<b>Toplam/Total</b>	665.515	634.206	526.544	575.869	793.172	910.867	817.620	893.124	807.486	1.011.194	626.577	583.771
<b>İthalat/Imports</b>	382.460	355.752	306.087	313.921	465.408	538.532	511.694	615.609	522.842	658.690	413.233	397.389
<b>İthalat/Imports (%)</b>	57	56	58	55	59	59	63	69	65	65	66	68

	2006	2007	2008	2009	2010	2011	2012	2013	2014	2015	2016
<b>Yerli/Local</b>	157.189	137.841	140.350	145.795	162.450	212.097	164.984	148.289	123.875	194.079	176.515
<b>İthal/Imports</b>	249.358	193.376	208.526	192.016	238.914	331.225	296.100	370.093	283.092	404.884	392.391
<b>Toplam/Total</b>	406.547	331.217	348.876	337.811	401.364	543.322	461.084	518.382	406.967	598.963	568.906
<b>İthalat/Imports (%)</b>	61	58	60	57	60	61	64	71	70	68	69

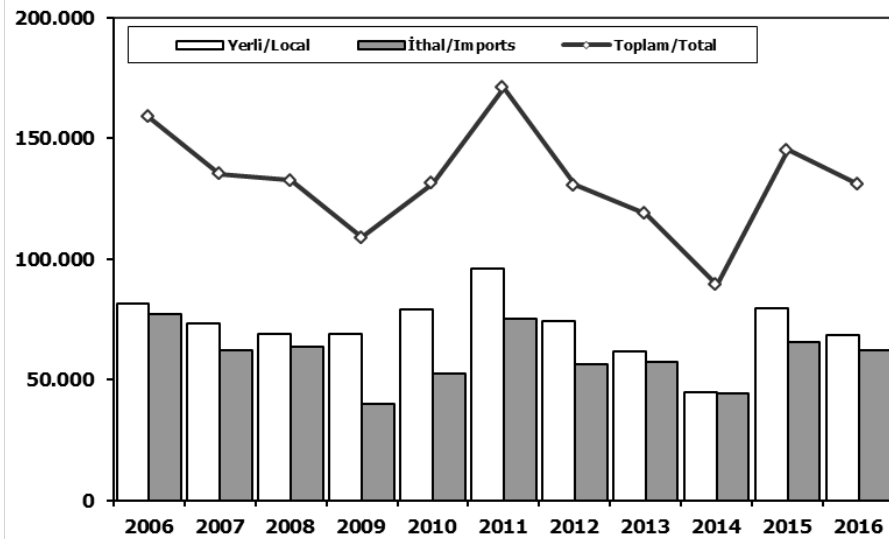
## Otomobil Pazarı (2006-2016 Ocak-Ağustos)

### P.Cars Market (2006-2016 January-August)



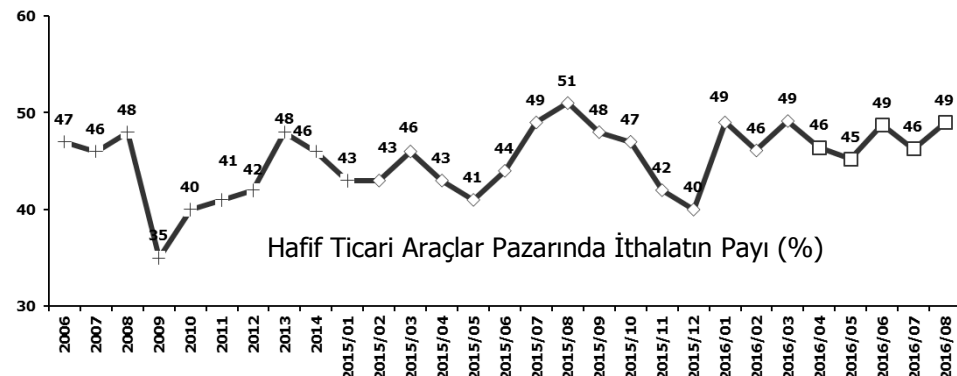
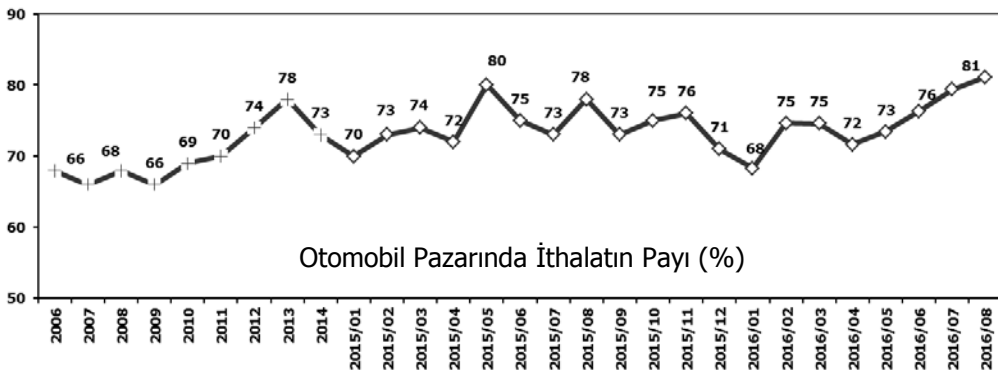
## Hafif Ticari Araçlar Pazarı (2006-2016 Ocak-Ağustos)

### Light Commercial Vehicle Market (2006-2016 January-August)



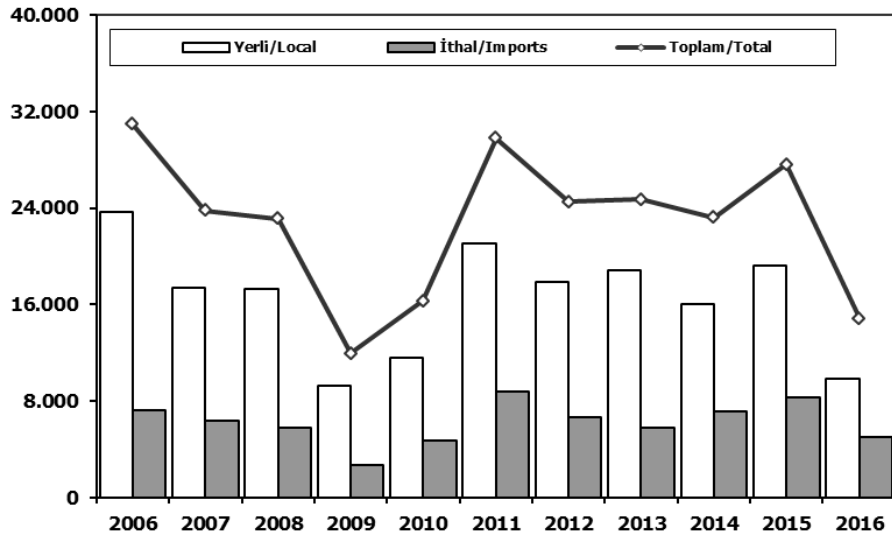
	2006	2007	2008	2009	2010	2011	2012	2013	2014	2015	2016
Yerli/Local	75.373	64.648	71.504	76.909	83.416	116.121	90.473	86.633	78.863	114.439	107.723
İthal/Imports	172.264	131.198	144.573	151.961	186.510	256.018	239.784	312.796	238.643	339.378	330.302
Toplam/Total	247.637	195.846	216.077	228.870	269.926	372.139	330.257	399.429	317.506	453.817	438.025
İthalat/Imports (%)	70	67	67	66	69	69	73	78	75	75	75

	2006	2007	2008	2009	2010	2011	2012	2013	2014	2015	2016
Yerli/Local	81.816	73.193	68.846	68.886	79.034	95.976	74.511	61.656	45.012	79.640	68.792
İthal/Imports	77.094	62.178	63.953	40.055	52.404	75.207	56.316	57.297	44.449	65.506	62.089
Toplam/Total	158.910	135.371	132.799	108.941	131.438	171.183	130.827	118.953	89.461	145.146	130.881
İthalat/Imports (%)	49	46	48	37	40	44	43	48	50	45	47



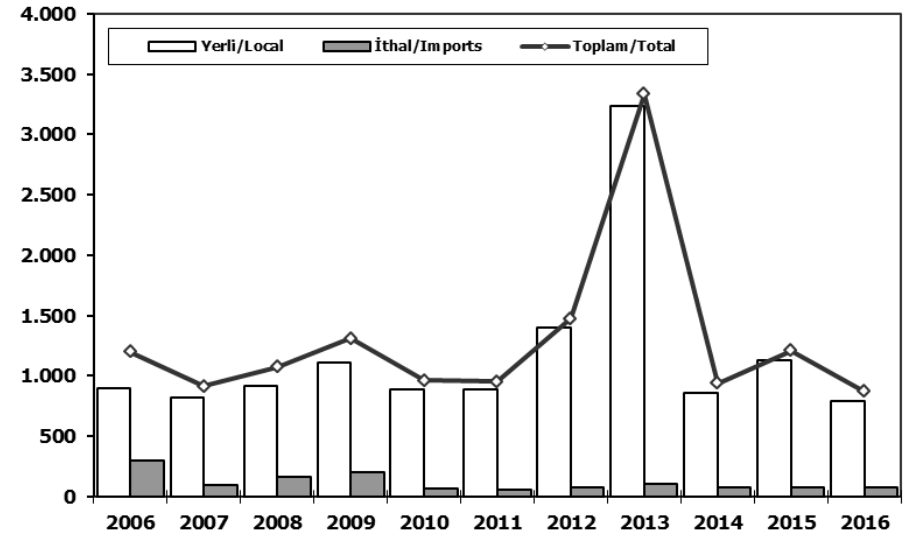
## Ağır Ticari Araçlar Pazarı (2006-2016 Ocak-Ağustos)

### HCV Market (2006-2016 January-August)



## Otobüs Pazarı (2006-2016 Ocak-Ağustos)

### Bus Market (2006-2016 January-August)

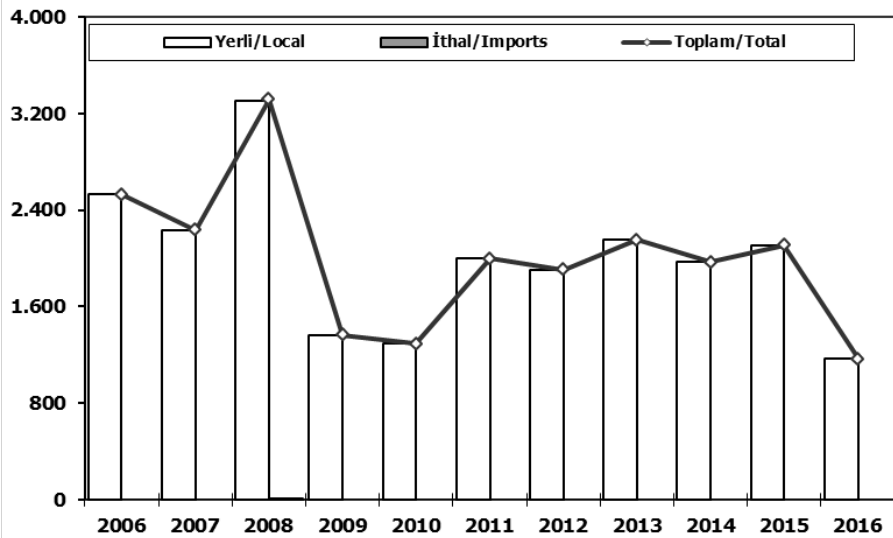


	2006	2007	2008	2009	2010	2011	2012	2013	2014	2015	2016
Yerli/Local	23.647	17.353	17.308	9.246	11.591	21.027	17.853	18.870	16.011	19.265	9.867
İthal/Imports	7.267	6.407	5.814	2.704	4.696	8.759	6.651	5.823	7.191	8.349	4.998
Toplam/Total	30.914	23.760	23.122	11.950	16.287	29.786	24.504	24.693	23.202	27.614	14.865
İthalat/Imports (%)	24	27	25	23	29	29	27	24	31	30	34

	2006	2007	2008	2009	2010	2011	2012	2013	2014	2015	2016
Yerli/Local	902	821	915	1.113	892	892	1.398	3.231	860	1.127	793
İthal/Imports	299	95	160	199	70	61	79	105	80	80	80
Toplam/Total	1.201	916	1.075	1.312	962	953	1.477	3.336	940	1.207	873
İthalat/Imports (%)	25	10	15	15	7	6	5	3	9	7	9

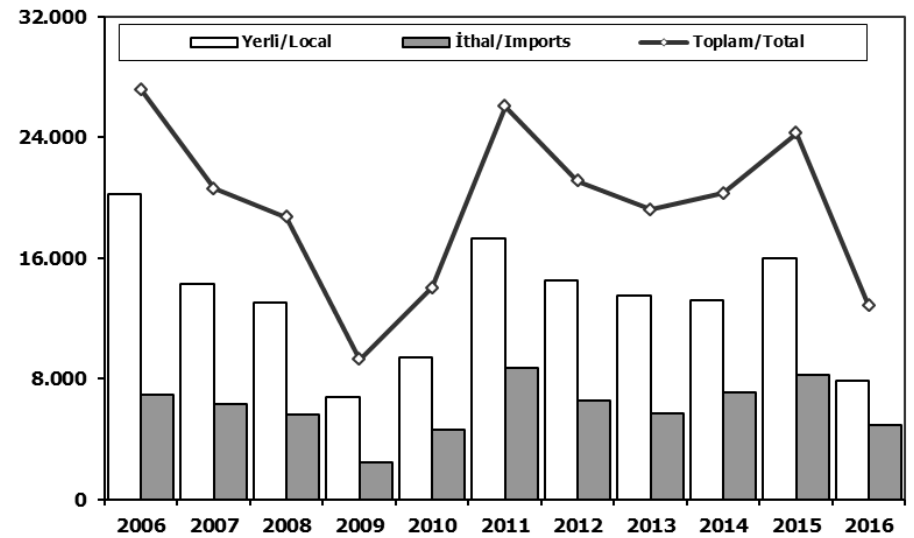
## Midibüs Pazarı (2006-2016 Ocak-Ağustos) (7-9 mt / 25-35 Kişilik)

Midibus Market (2006-2016 January-August) (7-9 mt / 25-35 Passengers)



## Kamyon Pazarı (2006-2016 Ocak-Ağustos)

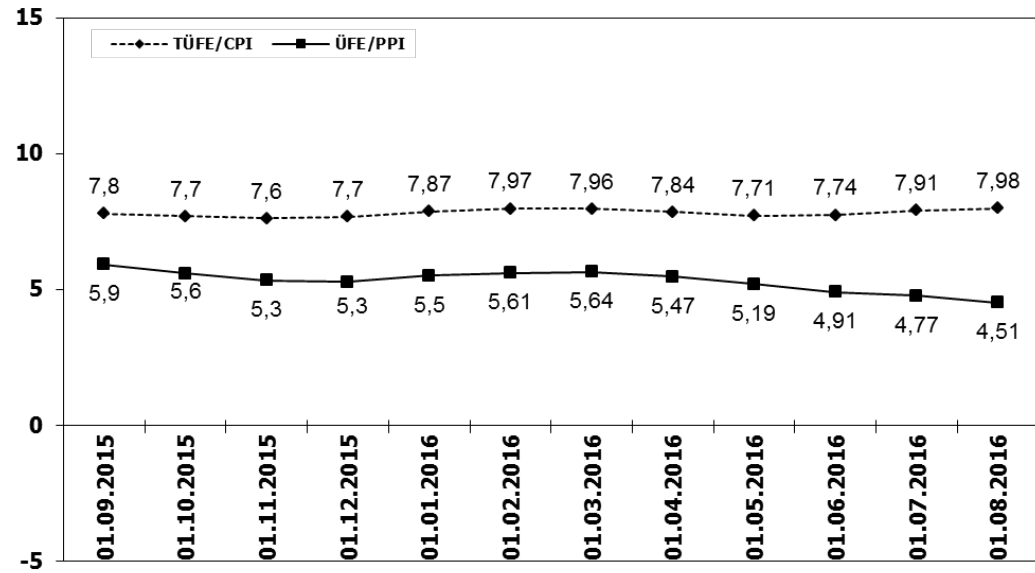
Truck Market (2006-2016 January-August)



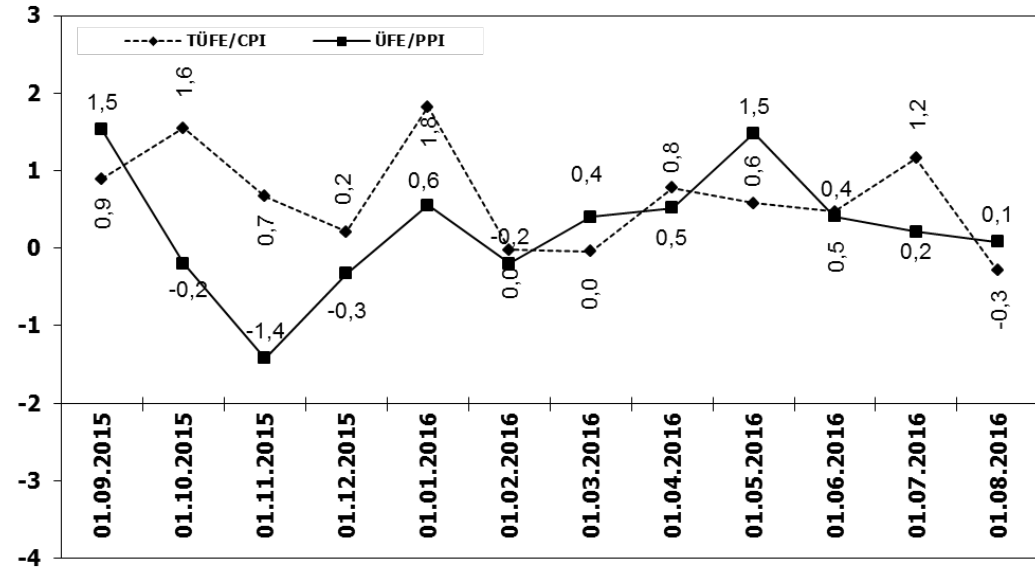
	2006	2007	2008	2009	2010	2011	2012	2013	2014	2015	2016
Yerli/Local	2.528	2.235	3.302	1.365	1.291	1.997	1.903	2.150	1.970	2.108	1.164
İthal/Imports	0	0	11	0	0	0	0	0	0	0	0
Toplam/Total	2.528	2.235	3.313	1.365	1.291	1.997	1.903	2.150	1.970	2.108	1.164
İthalat/Imports (%)	0	0	0	0	0	0	0	0	0	0	0

	2006	2007	2008	2009	2010	2011	2012	2013	2014	2015	2016
Yerli/Local	20.217	14.297	13.091	6.768	9.408	17.344	14.552	13.489	13.181	16.030	7.910
İthal/Imports	6.968	6.312	5.643	2.505	4.626	8.698	6.572	5.718	7.111	8.269	4.918
Toplam/Total	27.185	20.609	18.734	9.273	14.034	26.042	21.124	19.207	20.292	24.299	12.828
İthalat/Imports (%)	26	31	30	27	33	33	31	30	35	34	38

## TÜFE ve ÜFE'nin Yıllık Değişimi (%) CPI and PPI Yearly Changes (%)



## TÜFE ve ÜFE'nin Aylık Değişimi (%) CPI and PPI Monthly Changes (%)



## 2016 Otomotiv Sanayii Dış Satışlar 2016 Automotive Industry Exports Sales

TİPLER-Types	Ocak January	Şubat February	Mart March	Nisan April	Mayıs May	Haziran June	Temmuz July	Ağustos August	Eylül September	Ekim October	Kasım November	Aralık December	TOPLAM Total
<b>Otomobil</b>	<b>38.621</b>	<b>60.149</b>	<b>60.631</b>	<b>55.557</b>	<b>60.692</b>	<b>63.103</b>	<b>49.696</b>	<b>51.748</b>	<b>0</b>	<b>0</b>	<b>0</b>	<b>0</b>	<b>440.197</b>
OTOMOBİL-Pass. Car	38.621	60.149	60.631	55.557	60.692	63.103	49.696	51.748	0	0	0	0	440.197
<b>TİCARİ ARAÇ</b>	<b>30.179</b>	<b>38.548</b>	<b>38.174</b>	<b>37.583</b>	<b>33.586</b>	<b>37.062</b>	<b>31.770</b>	<b>18.251</b>	<b>0</b>	<b>0</b>	<b>0</b>	<b>0</b>	<b>265.153</b>
* KAMYONET-Pick Up	28.779	36.960	36.393	35.857	28.361	29.086	26.410	15.178	0	0	0	0	237.024
* KAMYON-Truck	158	335	325	420	501	552	741	361	0	0	0	0	3.393
* MİDİBÜS-Midibus	37	39	68	72	82	88	51	182	0	0	0	0	619
* MİNİBÜS-Minibus	723	605	804	674	4.053	6.697	4.247	2.034	0	0	0	0	19.837
* OTOBÜS-Bus	482	609	584	560	589	639	321	496	0	0	0	0	4.280
<b>Traktör</b>	<b>1.340</b>	<b>1.122</b>	<b>1.340</b>	<b>1.327</b>	<b>1.215</b>	<b>1.187</b>	<b>1.339</b>	<b>635</b>	<b>0</b>	<b>0</b>	<b>0</b>	<b>0</b>	<b>9.505</b>
TRAKTÖR-F.Tractor	1.340	1.122	1.340	1.327	1.215	1.187	1.339	635	0	0	0	0	9.505
<b>TOPLAM-Total</b>	<b>70.140</b>	<b>99.819</b>	<b>100.145</b>	<b>94.467</b>	<b>95.493</b>	<b>101.352</b>	<b>82.805</b>	<b>70.634</b>	<b>0</b>	<b>0</b>	<b>0</b>	<b>0</b>	<b>714.855</b>

### Otomobil

FİRMALAR-Companies	Ocak January	Şubat February	Mart March	Nisan April	Mayıs May	Haziran June	Temmuz July	Ağustos August	Eylül September	Ekim October	Kasım November	Aralık December	TOPLAM Total
FORD OTOSAN	1.559	1.341	1.523	1.515	1.063	1.660	1.261	1.119					11.041
HONDA TÜRKİYE	149	0	526	60	230	124	63	106					1.258
HYUNDAI ASSAN	18.350	18.300	19.800	16.180	17.300	19.100	11.300	14.560					134.890
OYAK RENAULT	9.605	25.721	24.792	24.166	27.251	26.136	17.015	17.660					172.346
TOfAS	4.667	8.671	8.032	8.530	9.984	13.068	11.365	9.122					73.439
TOYOTA	4.291	6.116	5.958	5.106	4.864	3.015	8.692	9.181					47.223
<b>TOPLAM-Total</b>	<b>38.621</b>	<b>60.149</b>	<b>60.631</b>	<b>55.557</b>	<b>60.692</b>	<b>63.103</b>	<b>49.696</b>	<b>51.748</b>	<b>0</b>	<b>0</b>	<b>0</b>	<b>0</b>	<b>440.197</b>

### Kamyon

FİRMALAR-Companies	Ocak January	Şubat February	Mart March	Nisan April	Mayıs May	Haziran June	Temmuz July	Ağustos August	Eylül September	Ekim October	Kasım November	Aralık December	TOPLAM Total
FORD OTOSAN	18.721	22.710	23.358	20.607	12.878	14.587	16.204	9.650					138.715
KARSAN	67	229	77	35	392	421	319	350					1.890
OTOKAR	0	0	33	0	0	9	0	24					66
TOfAS	9.991	14.021	12.925	15.215	15.091	14.069	9.887	5.154					96.353
<b>TOPLAM-Total</b>	<b>28.779</b>	<b>36.960</b>	<b>36.393</b>	<b>35.857</b>	<b>28.361</b>	<b>29.086</b>	<b>26.410</b>	<b>15.178</b>	<b>0</b>	<b>0</b>	<b>0</b>	<b>0</b>	<b>237.024</b>

### Minibüs

FİRMALAR-Companies	Ocak January	Şubat February	Mart March	Nisan April	Mayıs May	Haziran June	Temmuz July	Ağustos August	Eylül September	Ekim October	Kasım November	Aralık December	TOPLAM Total
FORD OTOSAN	721	595	749	674	4.050	6.689	4.240	2.023					19.741
KARSAN	2	10	55	0	3	8	7	11					96
<b>TOPLAM-Total</b>	<b>723</b>	<b>605</b>	<b>804</b>	<b>674</b>	<b>4.053</b>	<b>6.697</b>	<b>4.247</b>	<b>2.034</b>	<b>0</b>	<b>0</b>	<b>0</b>	<b>0</b>	<b>19.837</b>

### Kamyon

FİRMALAR-Companies	Ocak January	Şubat February	Mart March	Nisan April	Mayıs May	Haziran June	Temmuz July	Ağustos August	Eylül September	Ekim October	Kasım November	Aralık December	TOPLAM Total
A.I.O.S.	0	0	0	0	1								1
FORD OTOSAN	12	13	71	64	38	62	23	57					340
KARSAN	0	0	0	1	0	0	0	0					1
M. BENZ TÜRK	146	322	254	355	462	490	718	304					3.051
<b>TOPLAM-Total</b>	<b>158</b>	<b>335</b>	<b>325</b>	<b>420</b>	<b>501</b>	<b>552</b>	<b>741</b>	<b>361</b>	<b>0</b>	<b>0</b>	<b>0</b>	<b>0</b>	<b>3.393</b>

### Midibüs

FİRMALAR-Companies	Ocak January	Şubat February	Mart March	Nisan April	Mayıs May	Haziran June	Temmuz July	Ağustos August	Eylül September	Ekim October	Kasım November	Aralık December	TOPLAM Total
A.I.O.S.	14	15	29	30	42	54	16	133					333
KARSAN	1	2	0	1	2	0	2	1					9
OTOKAR	7	12	24	37	25	31	32	26					194
TEMSA GLOBAL	15	10	15	4	13	3	1	22					83
<b>TOPLAM-Total</b>	<b>37</b>	<b>39</b>	<b>68</b>	<b>72</b>	<b>82</b>	<b>88</b>	<b>51</b>	<b>182</b>	<b>0</b>	<b>0</b>	<b>0</b>	<b>0</b>	<b>619</b>

### Otobüs

FİRMALAR-Companies	Ocak January	Şubat February	Mart March	Nisan April	Mayıs May	Haziran June	Temmuz July	Ağustos August	Eylül September	Ekim October	Kasım November	Aralık December	TOPLAM Total
A.I.O.S.	0	1	6	7	18	24	1	17					74
KARSAN	0	0	0	0	0	20	0	10					30
M. BENZ TÜRK	316	366	344	274	342	295	199	287					2.423
MAN TÜRKİYE	131	231	170	151	102	178	67	100					1.130
OTOKAR	17	10	33	43	38	72	30	14					257
TEMSA GLOBAL	18	1	31	85	89	50	24	68					366
<b>TOPLAM-Total</b>	<b>482</b>	<b>609</b>	<b>584</b>	<b>560</b>	<b>589</b>	<b>639</b>	<b>321</b>	<b>496</b>	<b>0</b>	<b>0</b>	<b>0</b>	<b>0</b>	<b>4.280</b>

### Traktör

FİRMALAR-Companies	Ocak January	Şubat February	Mart March	Nisan April	Mayıs May	Haziran June	Temmuz July	Ağustos August	Eylül September	Ekim October	Kasım November	Aralık December	TOPLAM Total
HATTAT TARIM	33	107	82	151	145	111	0	35					664
TÜRK TRAKTÖR	1.307	1.015	1.258	1.176	1.070	1.076	1.339	600					8.841
<b>TOPLAM-Total</b>	<b>1.340</b>	<b>1.122</b>	<b>1.340</b>	<b>1.327</b>	<b>1.215</b>	<b>1.187</b>	<b>1.339</b>	<b>635</b>	<b>0</b>	<b>0</b>	<b>0</b>	<b>0</b>	<b>9.505</b>

## 2016 Yılı İthal Hafif Araç Satışları 2016 Light Vehicles Import Sales

2016 YILI İTHAL OTOMOBİL SATIŞLARI / P.Cars Import 2016

	2015 TOPLAMI 2015 Total	1	2	3	4	5	6	7	8	9	10	11	12	2016 TOPLAMI 2016 Total
VOLKSWAGEN	107.401	2.792	5.763	8.197	7.811	9.597	9.561	7.239	8.438					59.398
OPEL	47.000	1.263	2.521	3.936	4.775	5.754	5.809	3.495	4.116					31.669
FORD	43.341	972	2.733	3.347	3.141	3.231	4.439	2.025	2.294					22.182
DACIA	37.257	1.235	1.963	3.402	3.555	4.179	3.799	2.680	3.120					23.933
RENAULT	32.683	1.258	2.007	4.030	3.336	3.983	3.759	3.507	4.073					25.953
B.M.W	31.221	496	2.042	2.080	2.332	3.174	2.640	1.856	2.230					16.850
MERCEDES BENZ	30.333	1.091	1.701	2.480	2.305	3.080	3.786	1.651	2.456					18.550
NISSAN	26.421	971	1.534	2.989	2.684	2.546	2.584	1.212	2.183					16.703
HYUNDAI	25.164	1.148	1.499	2.651	2.344	2.649	2.296	1.286	1.890					15.763
PEUGEOT	22.808	540	1.730	2.526	1.557	2.349	2.099	1.497	1.601					13.899
SKODA	22.107	715	1.435	2.640	2.663	2.787	2.865	1.661	2.357					17.123
AUDI	20.279	911	1.200	1.455	2.148	2.352	1.961	905	903					11.835
SEAT	16.911	502	853	1.443	2.130	1.726	1.929	1.870	1.943					12.396
CITROEN	16.520	394	366	1.562	1.684	1.929	1.613	1.221	1.080					9.849
KIA	13.873	263	574	1.080	1.461	979	1.281	1.435	1.378					8.451
TOYOTA	10.949	149	588	955	836	1.040	913	754	1.104					6.339
VOLVO	6.939	187	194	311	335	512	465	130	203					2.337
HONDA	5.413	366	669	1.077	535	629	617	612	777					5.282
FIAT	5.241	162	247	336	278	266	232	171	262					1.954
JEEP	3.507	92	161	204	188	187	218	99	152					1.301
MAZDA	1.761	50	67	114	157	171	137	127	84					907
MINI (İngiliz)	1.739	101	74	134	166	161	143	83	123					985
SUBARU	1.737	73	112	152	148	165	122	74	103					949
LAND ROVER	1.577	46	131	318	186	200	201	103	215					1.400
MITSUBISHI	1.366	39	71	53	48	79	57	45	61					453
PORSCHE	861	55	40	55	59	61	68	32	59					429
ALFA ROMEO	847	12	75	149	58	68	48	33	31					474
SSANGYONG	605	19	23	37	34	76	70	23	55					337
PROTON	500	10	7	10	12	12	0	0	0					51
CHERY	394	30	23	12	9	22	25	22	1					144
JAGUAR	336	20	25	34	31	33	48	35	41					267
SUZUKI	177	7	0	194	151	332	422	234	370					1.710
TATA	168	0	0	0	0	0	0	0	0					0
SMART	88	0	0	16	13	24	12	5	6					76
MASERATI	73	1	6	1	5	3	6	1	5					28
INFINITI	43	0	0	0	4	6	23	6	7					46
GEELY	25	0	0	0	0	0	0	0	0					0
BENTLEY	19	0	1	0	0	1	0	1	0					3
LEXUS	13	0	0	6	7	2	3	4	5					27
FERRARI	10	3	1	0	4	3	1	0	0					12
LAMBORGHINI	6	0	1	0	1	0	1	0	3					6
LANCIA	2	0	0	0	0	0	0	0	0					0
ASTON MARTIN	0	2	1	2	4	4	3	2	3					21
DS	0	8	34	42	35	24	14	19	34					210
<b>TOPLAM</b>	<b>537.715</b>	<b>15.983</b>	<b>30.472</b>	<b>48.030</b>	<b>47.230</b>	<b>54.396</b>	<b>54.270</b>	<b>36.155</b>	<b>43.766</b>	<b>0</b>	<b>0</b>	<b>0</b>	<b>0</b>	<b>330.302</b>

2016 YILI İTHAL HAFİF TİCARİ ARAÇ SATIŞLARI / Light Commercial Vehicles Import 2016

	2015 TOPLAMI 2015 Total	1	2	3	4	5	6	7	8	9	10	11	12	2016 TOPLAMI 2016 Total
VOLKSWAGEN	31.642	1.736	2.391	3.096	2.674	2.839	2.845	1.845	2.729					20.155
RENAULT	15.617	451	602	983	1.442	1.466	1.333	761	864					7.902
FIAT	9.072	272	374	615	333	343	417	309	444					3.107
MERCEDES BENZ	8.457	360	549	925	671	684	760	253	485					4.687
PEUGEOT	8.212	467	284	471	835	532	1.183	463	819					5.054
DACIA	7.555	221	228	380	512	572	429	320	389					3.051
CITROEN	6.511	207	213	752	670	398	690	477	592					3.999
KIA	4.110	155	196	387	324	464	419	211	354					2.510
FORD	4.028	85	189	298	255	428	596	370	487					2.708
MITSUBISHI	3.897	324	151	312	329	220	385	244	352					2.317
TOYOTA	2.928	34	178	514	402	549	378	310	549					2.914
IVECO	2.710	88	131	173	163	246	172	89	142					1.204
HYUNDAI	1.612	71	117	138	163	186	158	153	240					1.226
ISUZU	333	57	34	90	25	23	32	73	53					387
SSANGYONG	303	3	5	16	19	31	38	10	22					144
TATA	228	9	0	0	0	0	0	0	0					9
NISSAN	7	0	0	175	126	92	121	110	91					715
MAZDA	0	0	0	0	0	0	0	0	0					0
<b>TOPLAM</b>	<b>107.222</b>	<b>4.540</b>	<b>5.642</b>	<b>9.325</b>	<b>8.943</b>	<b>9.073</b>	<b>9.956</b>	<b>5.998</b>	<b>8.612</b>	<b>0</b>	<b>0</b>	<b>0</b>	<b>0</b>	<b>62.089</b>